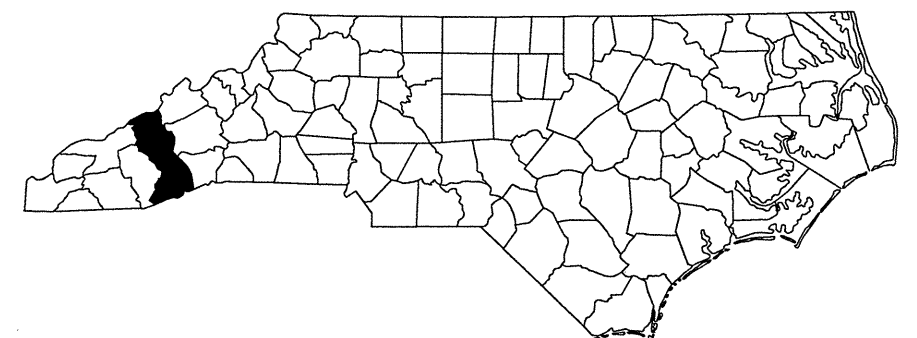
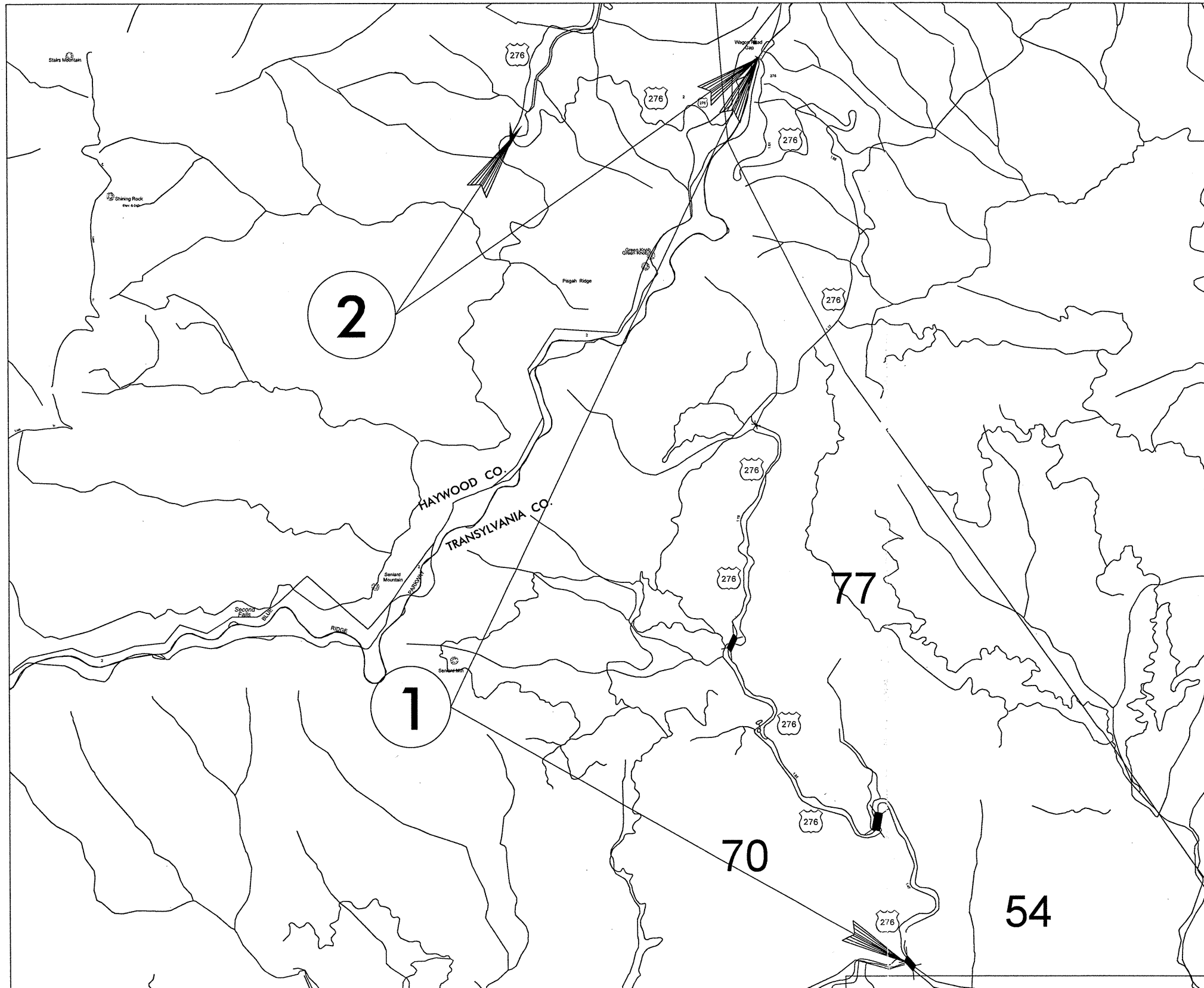


TRANSYLVANIA AND HAYWOOD COUNTIES

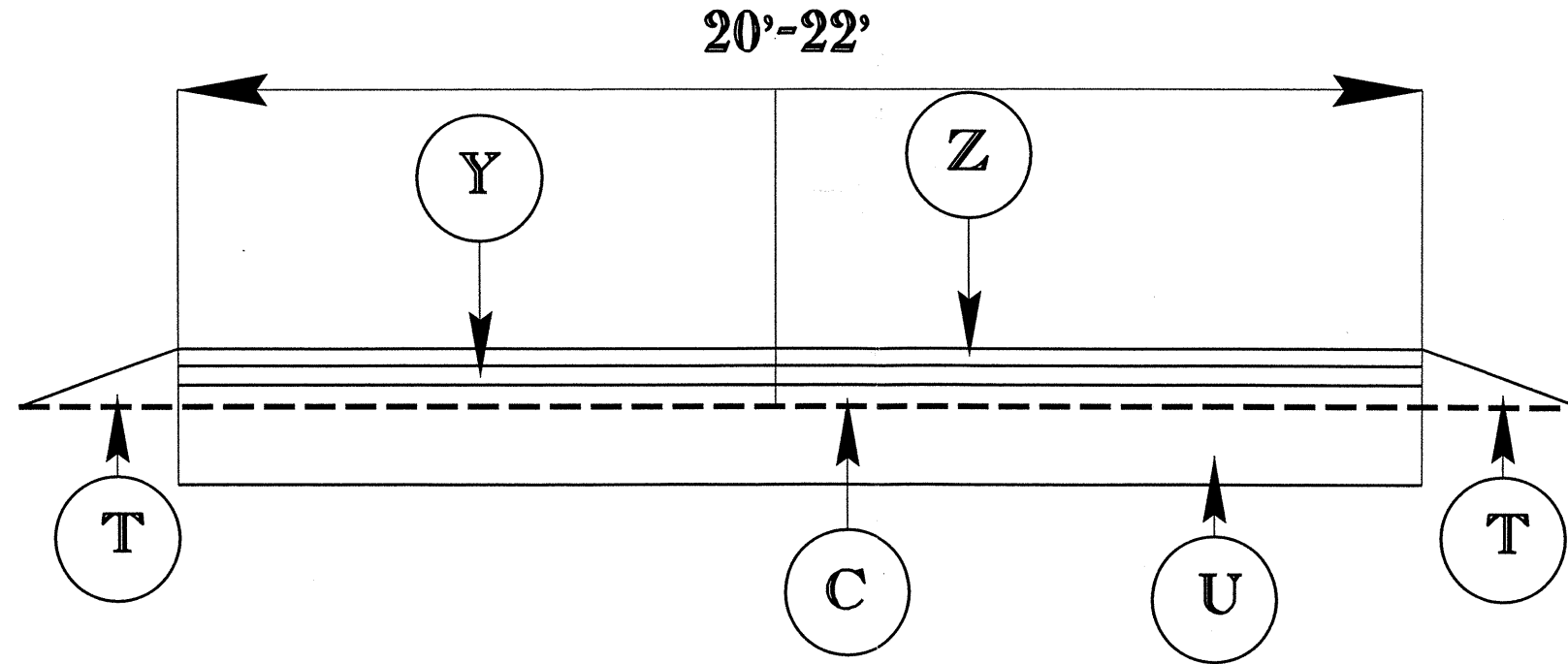
PROJECT REFERENCE NO.		SHEET NO.
14CR.10881.5, ETC		1
STATE PROJECT	F.A. PROJECT NO.	DESCRIPTION
14CR.10881.5, ETC		



050187

PROJECT REFERENCE NO.		SHEET NO.
14CR.10881.5, ETC		2
STATE PROJECT	F.A. PROJECT NO.	DESCRIPTION
14CR.10881.5, ETC		

TYPICAL 1



SURFACING SCHEDULE

ITEM NO	DESCRIPTION
C	ASPHALT CONCRETE SURFACE COURSE (LEVELING), TYPE SF9.5A
T	SHOULDER RECONSTRUCTION (BY STATE FORCES)
U	EXISTING PAVEMENT
Y	ASPHALT SURFACE TREATMENT (AST) SPLIT SEAL TO BE DONE BY STATE FORCES
Z	SPECIALTY SEAL — FOG SEAL

PROJECT NO.	SHEET NO.	TOTAL NO.
14CR.10881.5, 14CR.10441.9	3	

SUMMARY OF QUANTITIES

PROJECT NO	COUNTY	MAP NO	ROUTE	DESCRIPTION	TYP NO	FINAL SURFACE TESTING REQUIRED	LENGTH MI	WIDTH FT	ASPHALT CONC. LEVELING COURSE, TYPE SF9.5A TON	ASPHALT BINDER FOR PLANT MIX TONS	FOG SEAL SY
14CR.10881.5	Transylvania	1	US 276	FROM BRIDGE #54 AT PISGAH CENTER FOR WILDLIFE EDUCATION ROAD TO HAYWOOD CO. LINE	1	NO	9.9	21	6,994	469	121,859
TOTAL FOR MAP NO. 1							9.9		6,994	469	121,859
TOTAL FOR PROJ NO. 14CR.10881.5							9.9		6,994	469	121,859
14CR.10441.9	Haywood	2	US 276	FROM TRANSYLVANIA CO. LINE TO FOREST SERVICE ROAD #256	1	NO	2.8	21	2,017	135	34,452
TOTAL FOR MAP NO. 2							2.8		2,017	135	34,452
TOTAL FOR PROJ NO. 14CR.10441.9							2.8		2,017	135	34,452
GRAND TOTAL							12.7		9,011	604	156,311

THERMOPLASTIC AND PAINT QUANTITIES

PROJECT NO	COUNTY	MAP NO	ROUTE	DESCRIPTION	LENGTH	WIDTH	4810000000-E	4810000000-E
							4" WHITE PAINT LF	4" YELLOW PAINT LF
14CR.10881.5	Transylvania	1	US 276	FROM BRIDGE #54 AT PISGAH CENTER FOR WILDLIFE EDUCATION ROAD TO HAYWOOD CO. LINE	9.9	21	213,048	317,592
TOTAL FOR MAP NO. 1					9.9		213,048	317,592
TOTAL FOR PROJ NO. 14CR.10881.5					9.9		530,640	
14CR.10441.9	Haywood	2	US 276	FROM TRANSYLVANIA CO. LINE TO FOREST SERVICE ROAD #256	2.8	21	60,256	89,824
TOTAL FOR MAP NO. 2					2.8		60,256	89,824
TOTAL FOR PROJ NO. 14CR.10441.9					2.8		150,080	
GRAND TOTAL					12.7		273,304	407,416
							680,720	