

09/08/99

T.I.P. NO.	SHEET NO.
B-4506	UC-1

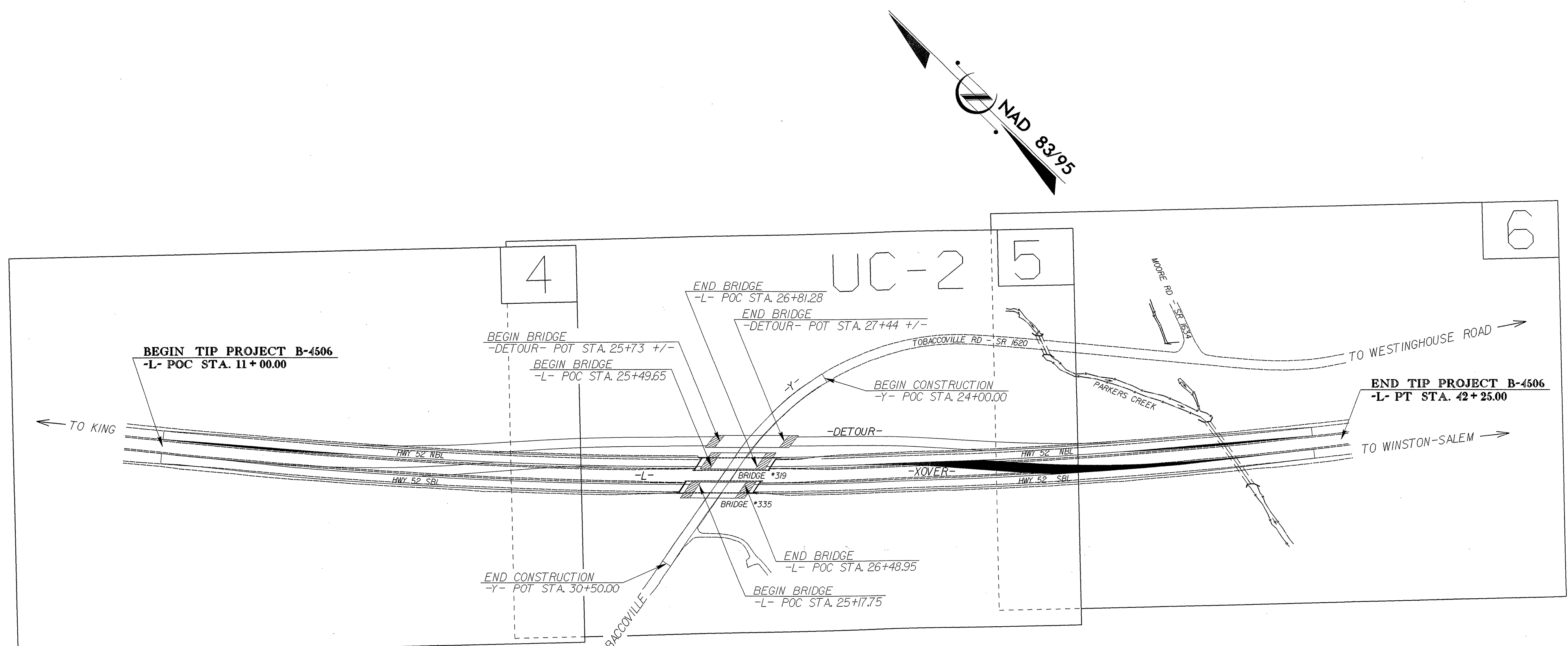
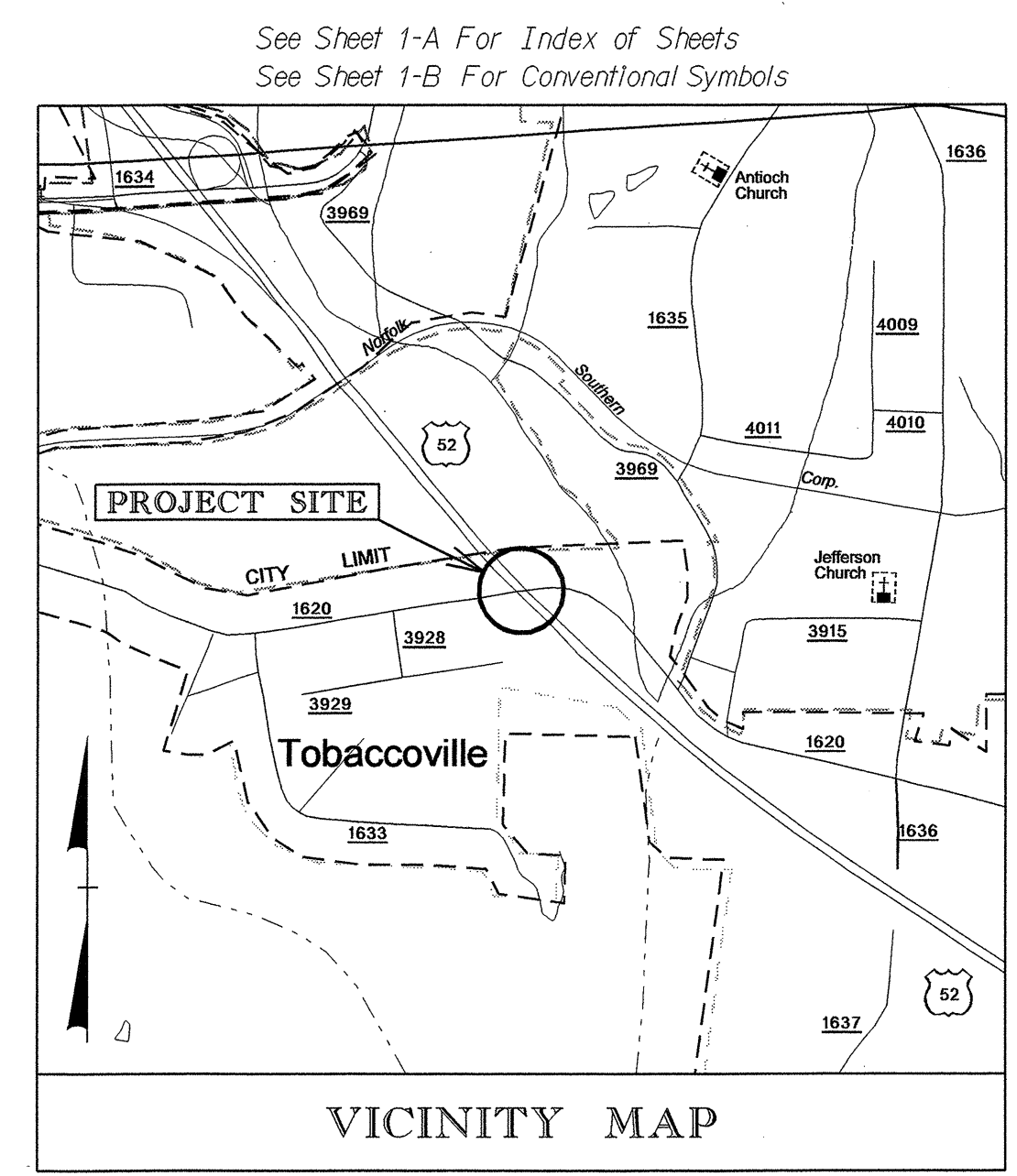
STATE OF NORTH CAROLINA  
DIVISION OF HIGHWAYS

**UTILITY CONSTRUCTION PLANS  
FORSYTH COUNTY**

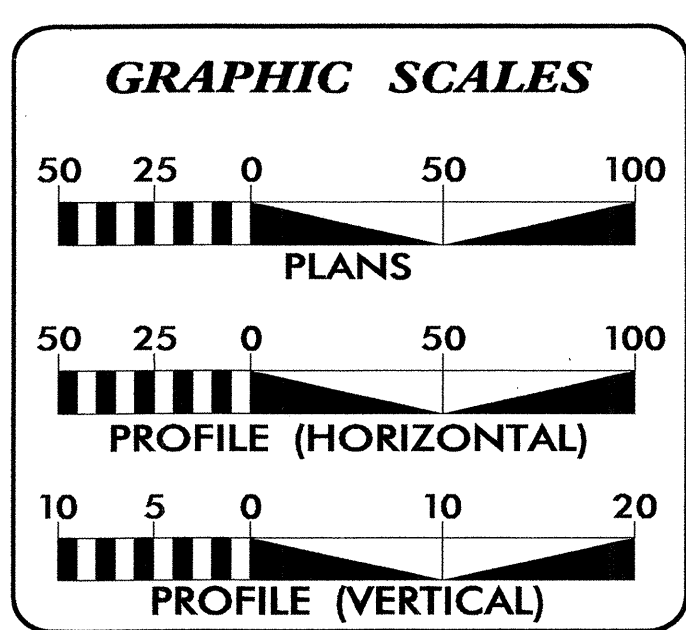
**LOCATION: BRIDGES NO. 319 & NO. 335 ON US 52  
OVER SR 1620 (TOBACCOVILLE RD.)**

**TYPE OF WORK: UTILITY WORK**

**TIP PROJECT: B-4506**



NOTES: (1) THIS IS A CONTROLLED-ACCESS PROJECT WITH ACCESS BEING LIMITED TO INTERCHANGES.  
(2) CLEARING ON THIS PROJECT SHALL BE PERFORMED TO THE LIMITS ESTABLISHED BY METHOD III.  
(3) THIS PROJECT IS WITHIN THE TOBACCOVILLE MUNICIPAL BOUNDARIES.



**INDEX OF SHEETS**

SHEET NO.	DESCRIPTION
UC-1	TITLE SHEET
UC-2	UTILITY CONSTRUCTION PLAN SHEETS
UC-3	DETAILS PLAN SHEETS

**WATER AND SEWER OWNERS ON PROJECT**

(1) WATER CITY OF KING

SEAL

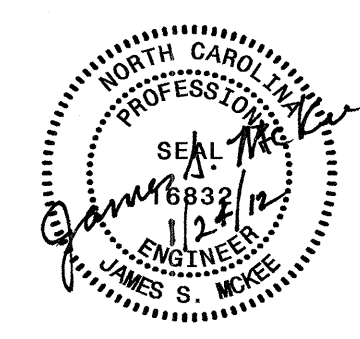
PREPARED IN THE OFFICE OF:  
**DIVISION OF HIGHWAYS  
UTILITIES ENGINEERING  
SECTION**

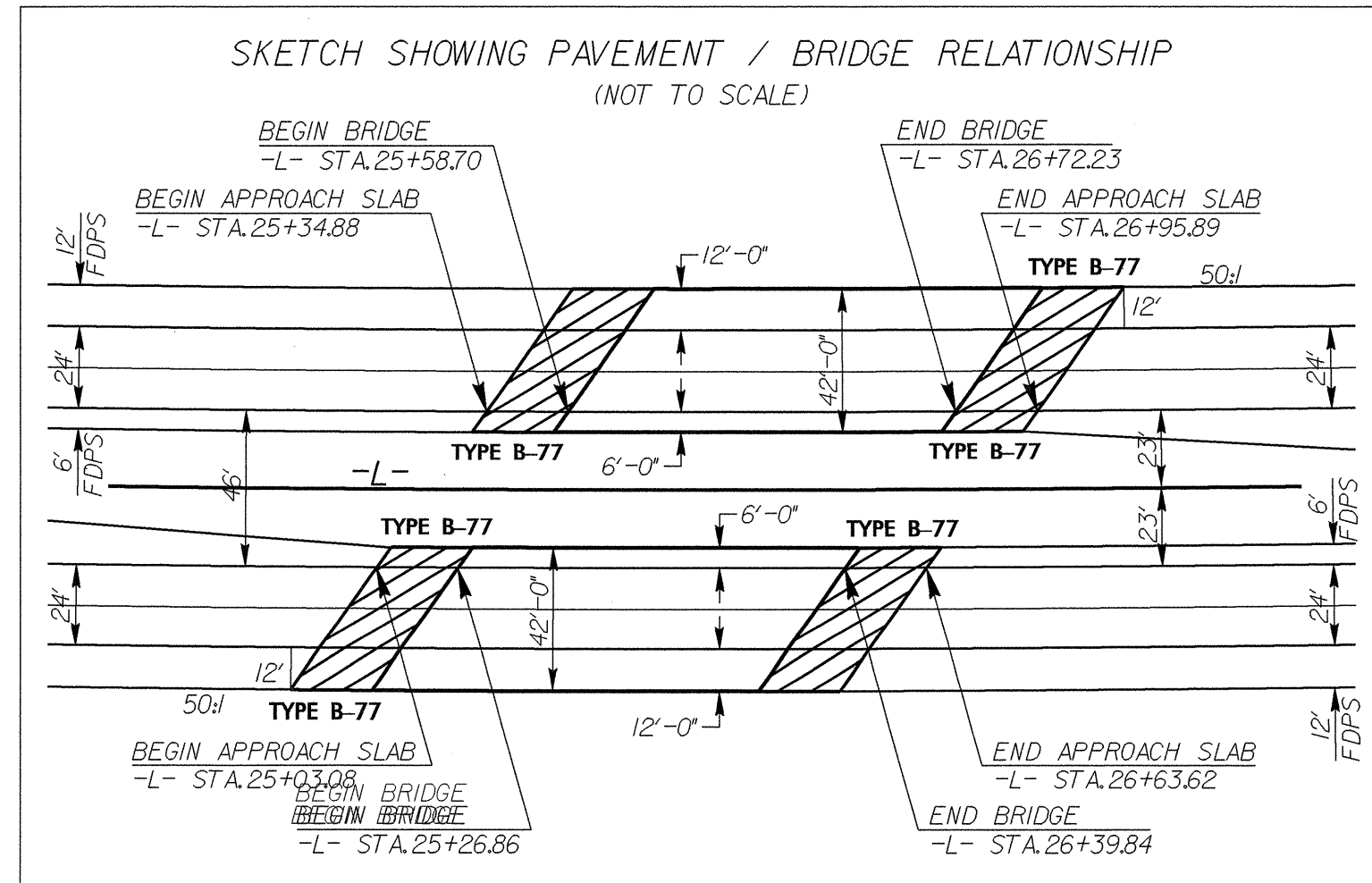
1555 MAIL SERVICES CENTER  
RALEIGH NC 27699-1555  
PHONE (919) 707-6690  
FAX (919) 250-4151

**Roger Worthington, P.E.** UTILITIES SECTION ENGINEER  
**Steve McKee, P.E.** UTILITIES SQUAD LEADER PROJECT ENGINEER  
**Jamshid Hafshejani** UTILITIES PROJECT DESIGNER

16-DEC-2011 09:01  
R:\Utilities\RDy\_Ut\Proj\B-4506-Ut-Title\_UC1\_psh.dgn  
\$\$\$\$\$USERNAME\$\$\$\$\$

5/14/09  
24-JAN-2012 15:14  
R:\ut\proj\B-4506\U.L. (r-dy sht)\UC2(utl Const Sht)\\_psh.dgn  
\$\$\$\$

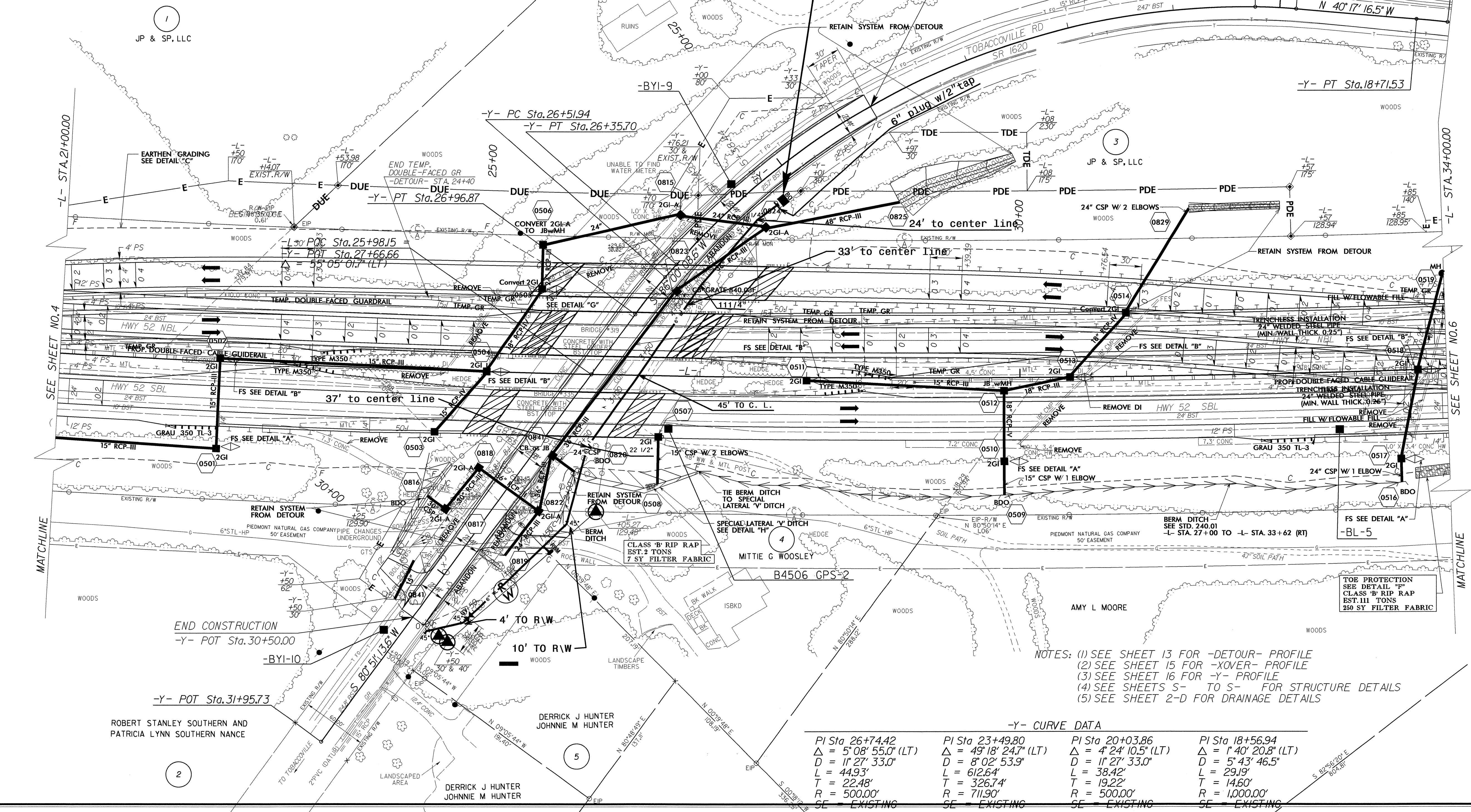
PROJECT REFERENCE NO.	SHEET NO.
B-4506	UC-2
DESIGNED BY: JH	
DRAWN BY: JH	
CHECKED BY: JSM	
APPROVED BY: JSM	
REVISED:	
NORTH CAROLINA DEPARTMENT OF TRANSPORTATION	
UTILITIES ENGINEERING SEC. PHONE: (919) 707-6690 FAX: (919) 725-4151	
UTILITY CONSTRUCTION PLANS ONLY	



NOTE:  
The owner of the existing water line is the City of King.  
The Contractor will be required to limit interruption of service to water to a one time maximum 4 hour period.

-L- CURVE DATA  
PI Sta 26+19.31  
 $\Delta = 12^{\circ} 52' 07.1$  (LT)  
 $D = 0^{\circ} 23' 56.5$   
 $L = 3,225.00'$   
 $T = 1,619.31'$   
 $R = 14,358.86'$   
 $SE = .02$

PROP. 545' OF 6" PVC PIPE  
C-900 DR 18 (WATER).  
1- 6" GATE VALVE.  
1- RELOCATE WATER METER.  
1-2" BLOW-OFF.



ROBERT STANLEY SOUTHERN AND  
PATRICIA LYNN SOUTHERN NANCE

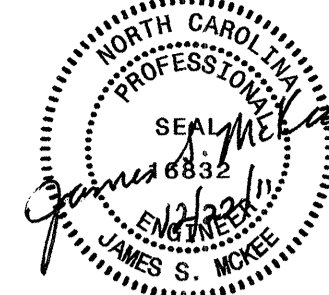
DERRICK J HUNTER  
JOHNNIE M HUNTER

-Y- CURVE DATA

PI Sta 26+74.42	PI Sta 23+49.80	PI Sta 20+03.86	PI Sta 18+56.94
$\Delta = 5^{\circ} 08' 55.0$ (LT)	$\Delta = 49^{\circ} 18' 24.7$ (LT)	$\Delta = 4^{\circ} 24' 10.5$ (LT)	$\Delta = 1^{\circ} 40' 20.8$ (LT)
$D = 11^{\circ} 27' 33.0$	$D = 8^{\circ} 02' 53.9$	$D = 11^{\circ} 27' 33.0$	$D = 5^{\circ} 43' 46.5$
$L = 44.93'$	$L = 612.64'$	$L = 38.42'$	$L = 29.19'$
$T = 22.48'$	$T = 326.74'$	$T = 19.22'$	$T = 14.60'$
$R = 500.00'$	$R = 711.90'$	$R = 500.00'$	$R = 1,000.00'$
SE - EXISTING	SE - EXISTING	SE - EXISTING	SE - EXISTING

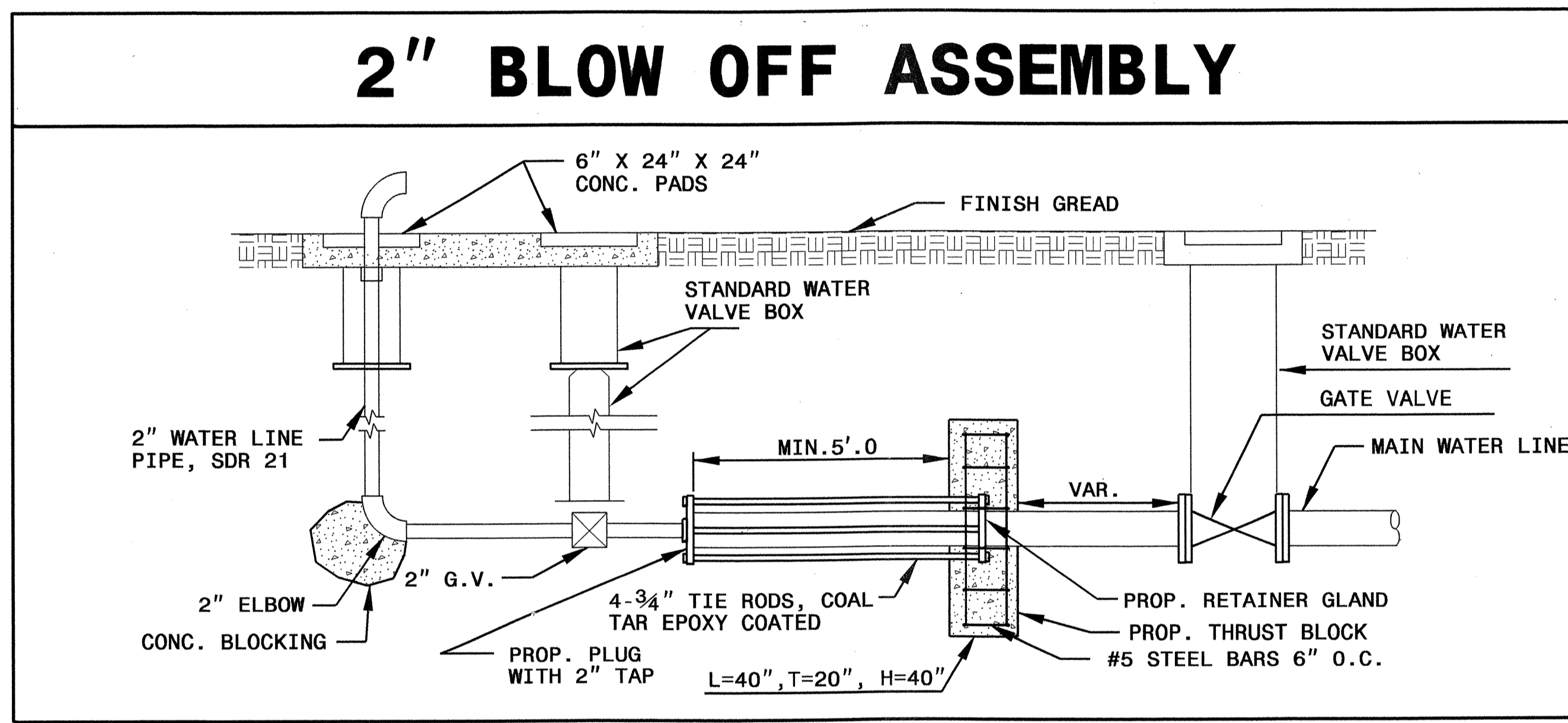
5/14/99

R:\U\1\23-DEC-2011 09:53  
 B-4506 UC-3-detail.dgn

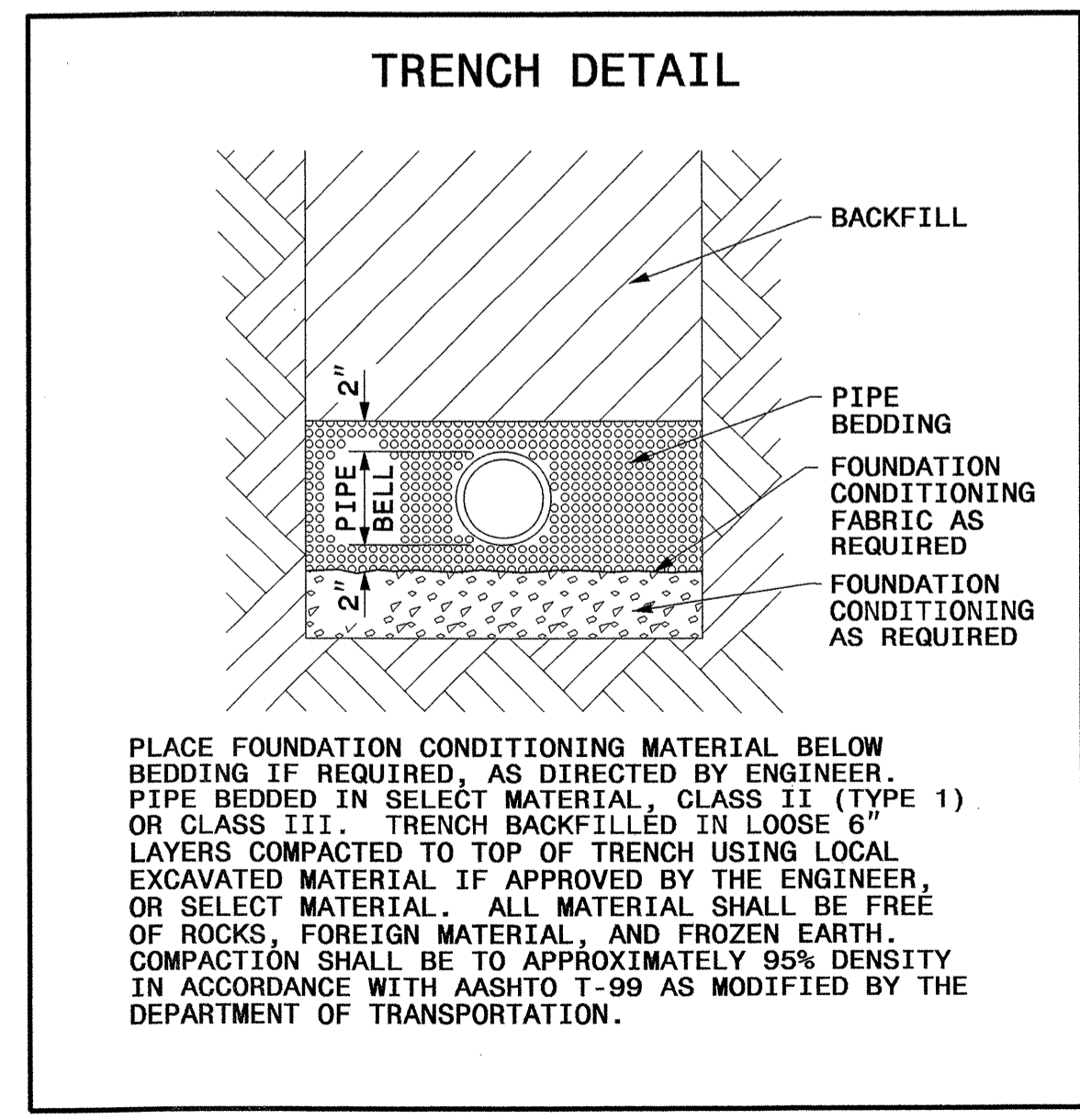
PROJECT REFERENCE NO. B-4506	SHEET NO. UC-3
DESIGNED BY: JH	
DRAWN BY: JH	
CHECKED BY: JSM	
APPROVED BY: JSM	
REVISED:	
NORTH CAROLINA DEPARTMENT OF TRANSPORTATION UTILITIES ENGINEERING SEC. PHONE: (919) 250-4128 FAX: (919) 250-4119	
UTILITY CONSTRUCTION PLANS ONLY	

**NOTE: FOR OTHER DETAILS, SEE 2012 NCDOT ROADWAY STANDARD DRAWINGS.**

**UTILITY CONSTRUCTION**



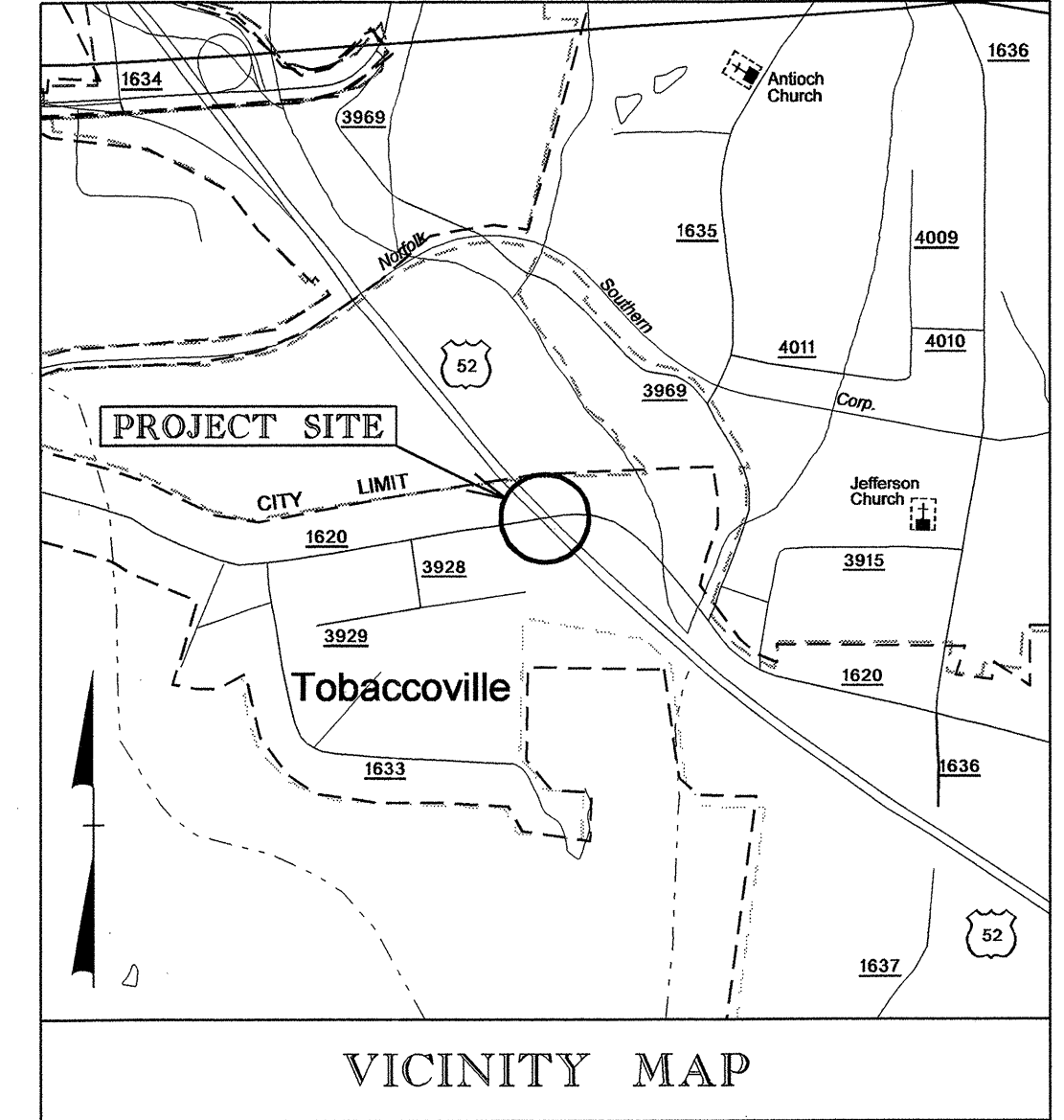
MAXIMUM TRENCH WIDTH AT TOP OF PIPE			
NOMINAL PIPE SIZE (INCHES)	TRENCH WIDTH (INCHES)	NOMINAL PIPE SIZE (INCHES)	TRENCH WIDTH (INCHES)
4	28	20	44
6	30	24	48
8	32	30	54
10	34	36	60
12	36	42	66
14	38	48	72
16	40	54	78
18	42		



19-DEC-2011 4:55  
 R:\Utilities\Road\UF\Proj\B-4506\_UT\_Title\_U01.psh.dgn  
 \$\$\$USERNAME\$\$\$

**TIP PROJECT: B - 4506**

See Sheet 1-A For Index of Sheets  
 See Sheet 1-B For Conventional Symbols



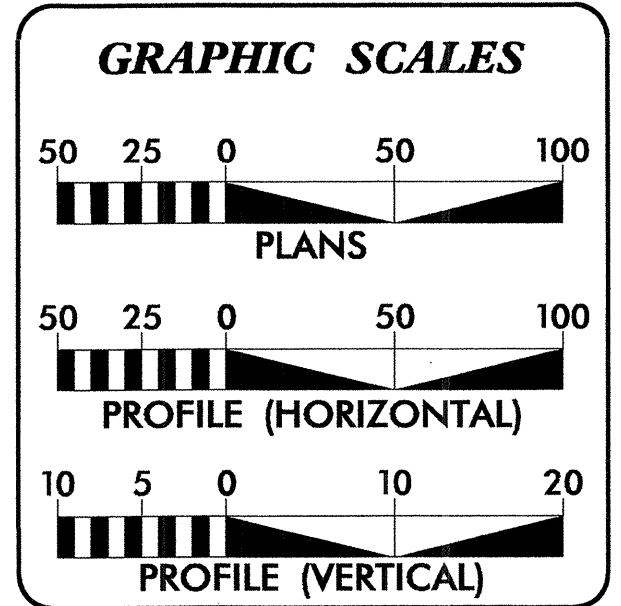
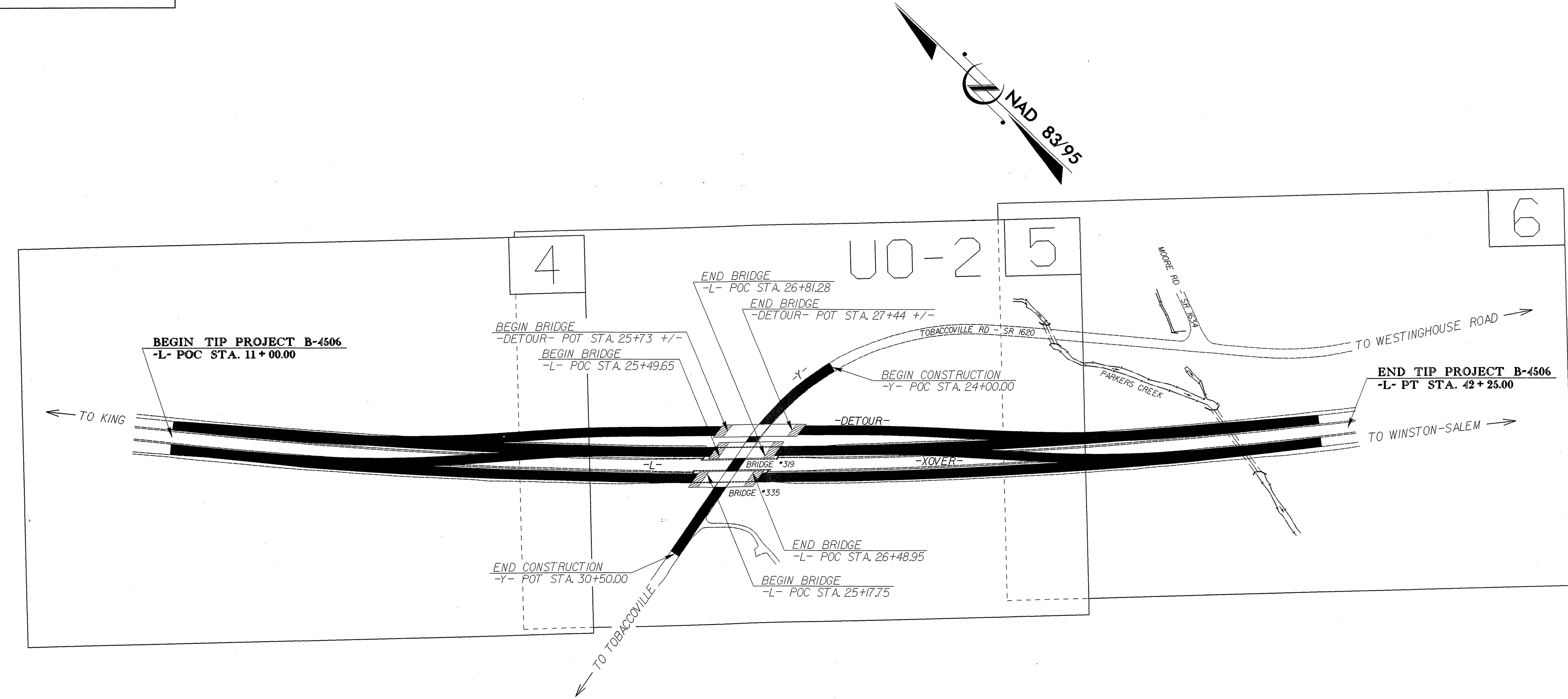
STATE OF NORTH CAROLINA  
 DIVISION OF HIGHWAYS

**UTILITIES BY OTHERS PLANS  
 FORSYTH COUNTY**

**LOCATION: BRIDGES NO. 319 & NO. 335 ON US 52  
 OVER SR 1620 (TOBACCOVILLE RD.)**

**TYPE OF WORK: UTILITIES WORK**

T.I.P. NO.	SHEET NO.
B-4506	UO-1



**INDEX OF SHEETS**

SHEET NO.	DESCRIPTION
UO-1	TITLE SHEET
UO-2	UTILITY BY OTHERS PLAN SHEETS

**UTILITY OWNERS ON PROJECT**

- DUKE COMPANY: POWER
- AT&T COMPANY: TELEPHONE
- WINDSTREAM: TELEPHONE
- PIEDMONT NATURAL: GAS



PREPARED IN THE OFFICE OF:  
**DIVISION OF HIGHWAYS  
 UTILITIES ENGINEERING  
 SECTION**

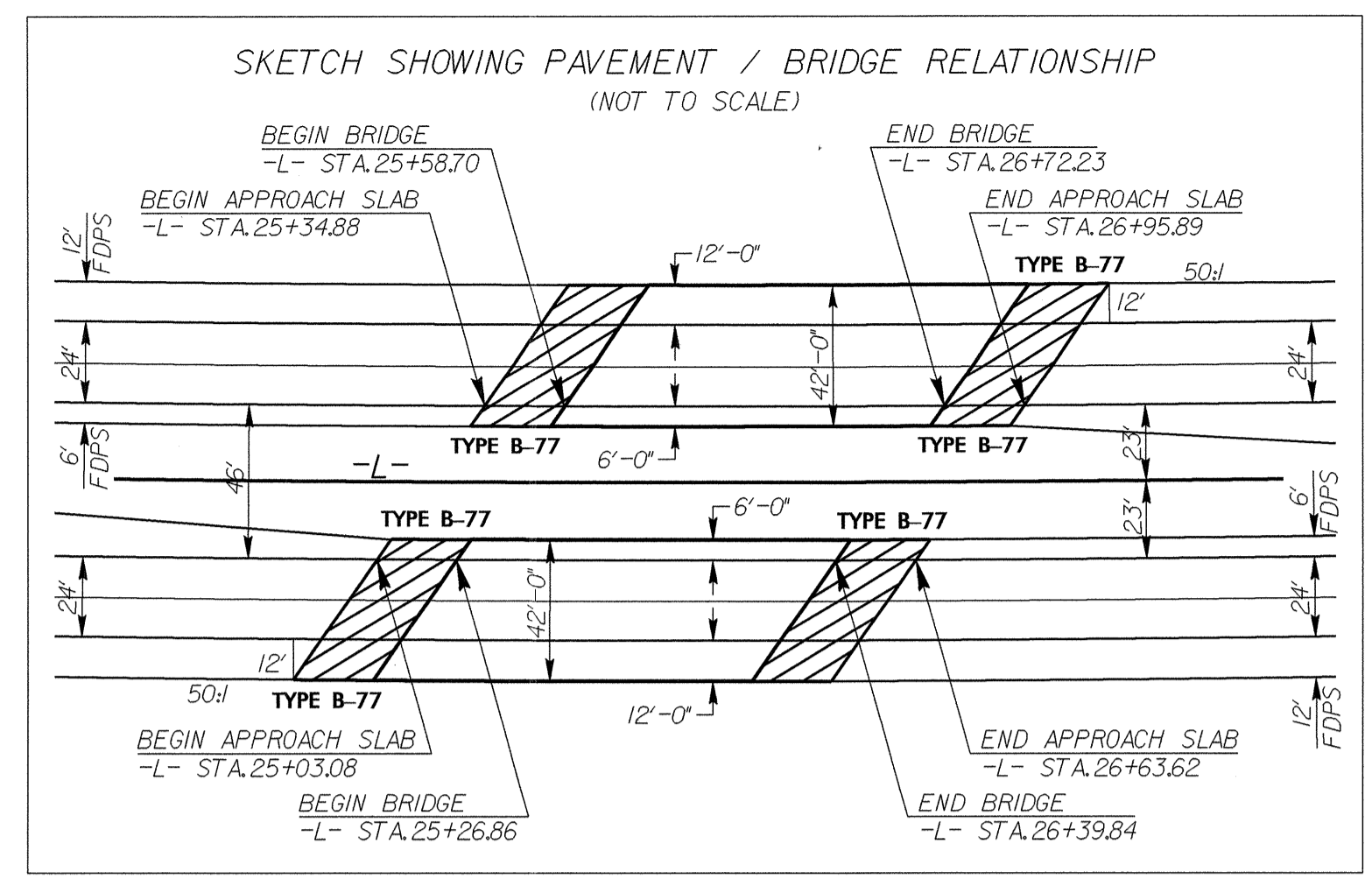
1591 MAIL SERVICES CENTER  
 RALEIGH NC 27699-1591  
 PHONE (919) 707-6690  
 FAX (919) 250-4151

**Roger Worthington, P.E.** UTILITIES SECTION ENGINEER  
**Steve McKee, P.E.** UTILITIES SQUAD LEADER PROJECT ENGINEER  
**Jamshid Hafshejani** UTILITIES PROJECT DESIGNER

**UTILITY OWNERS**  
**POWER LINES - DUKE ENERGY.**  
**TEL. LINES - WINDSTREAM CO.**  
**TEL. AND TFO LINES - AT&T. CO.**  
**GAS LINE - PIEDMONT NATURAL GAS CO.**

**UTILITIES BY OTHERS**

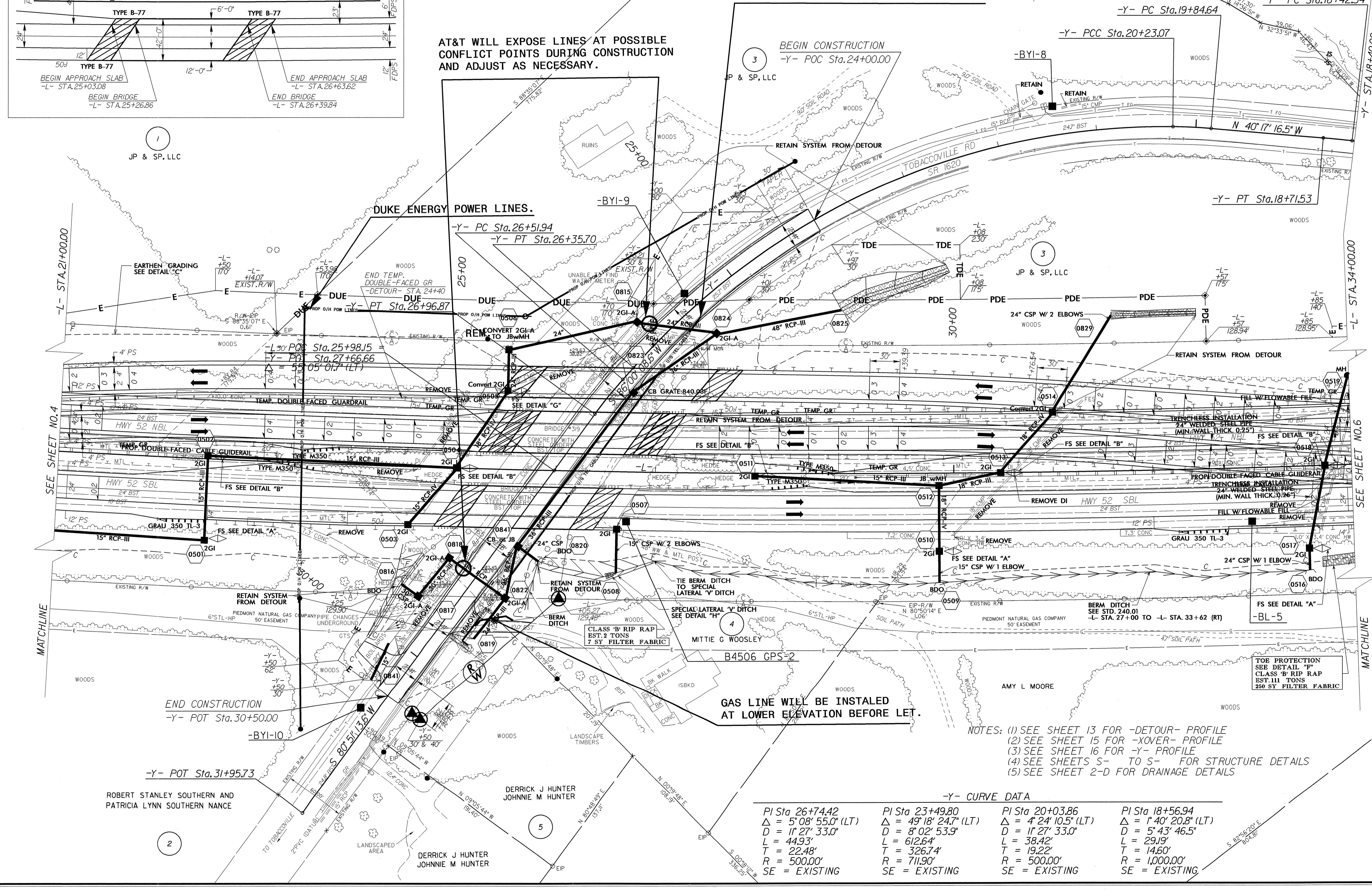
**NOTE:**  
**ALL PROPOSED UTILITY WORK SHOWN ON THIS SHEET WILL BE DONE BY OTHERS**



**-L- CURVE DATA**  
 PI Sta 26+19.31  
 $\Delta = 12^\circ 52' 07.1''$  (LT)  
 $D = 0^\circ 23' 56.5''$   
 $L = 3,225.00'$   
 $T = 1,619.31'$   
 $R = 14,358.86'$   
 $SE = 02$

WINDSTREAM WILL USE TRENCHLESS SYSTEM FROM STA. 25+50 TO 29+50 TO INSTALL TEL. LINES MIN. 10' UNDER PROPOSED GRADE AND CONNECT TO EXISTING TEL. LINES BEFORE LET.

AT&T WILL EXPOSE LINES AT POSSIBLE CONFLICT POINTS DURING CONSTRUCTION AND ADJUST AS NECESSARY.



GAS LINE WILL BE INSTALLED AT LOWER ELEVATION BEFORE LET.

NOTES: (1) SEE SHEET 13 FOR -DETOUR- PROFILE  
 (2) SEE SHEET 15 FOR -COVER- PROFILE  
 (3) SEE SHEET 16 FOR -Y- PROFILE  
 (4) SEE SHEETS S- TO S- FOR STRUCTURE DETAILS  
 (5) SEE SHEET 2-D FOR DRAINAGE DETAILS

**-Y- CURVE DATA**

PI Sta 26+74.42 $\Delta = 5^\circ 08' 55.0''$ (LT) $D = 1^\circ 27' 33.0''$ $L = 449.3'$ $T = 22.48'$ $R = 500.00'$ SE = EXISTING	PI Sta 23+49.80 $\Delta = 49^\circ 18' 24.7''$ (LT) $D = 8^\circ 02' 53.9''$ $L = 612.64'$ $T = 326.74'$ $R = 711.90'$ SE = EXISTING	PI Sta 20+03.86 $\Delta = 4^\circ 24' 10.5''$ (LT) $D = 1^\circ 27' 33.0''$ $L = 38.42'$ $T = 19.22'$ $R = 500.00'$ SE = EXISTING	PI Sta 18+56.94 $\Delta = 1^\circ 40' 20.8''$ (LT) $D = 5^\circ 43' 46.5''$ $L = 29.19'$ $T = 14.60'$ $R = 1,000.00'$ SE = EXISTING
---	--	---	---

5/14/09  
 24-14N-2012 (5/17/09) (r-dj sht+1) UO2 (tbl) by Others Sht+1.psh.dgn  
 \$\$\$\$\$\$  
 \$\$\$\$\$\$  
 \$\$\$\$\$\$

ROBERT STANLEY SOUTHERN AND  
 PATRICIA LYNN SOUTHERN NANCE

DERRICK J HUNTER  
 JOHNNIE M HUNTER

DERRICK J HUNTER  
 JOHNNIE M HUNTER

JP & SP, LLC

JP & SP, LLC

JP & SP, LLC

DERRICK J HUNTER  
 JOHNNIE M HUNTER

AMY L MOORE

MITTIE G WOOLEY

CLASS 'B' RIP RAP  
 EST. 2 TONS  
 7-SY FILTER FABRIC

TOE PROTECTION  
 SEE DETAIL 'F'  
 CLASS 'B' RIP RAP  
 EST. 111 TONS  
 350 SY FILTER FABRIC

SEE SHEET NO. 4

SEE SHEET NO. 6

MATCHLINE

MATCHLINE

2

5

3

3

20+00

20+00

20+00

20+00

20+00

20+00

20+00

20+00

20+00

20+00

20+00

20+00

20+00

20+00

20+00

20+00

20+00

20+00

20+00

20+00

20+00

20+00

20+00

20+00