

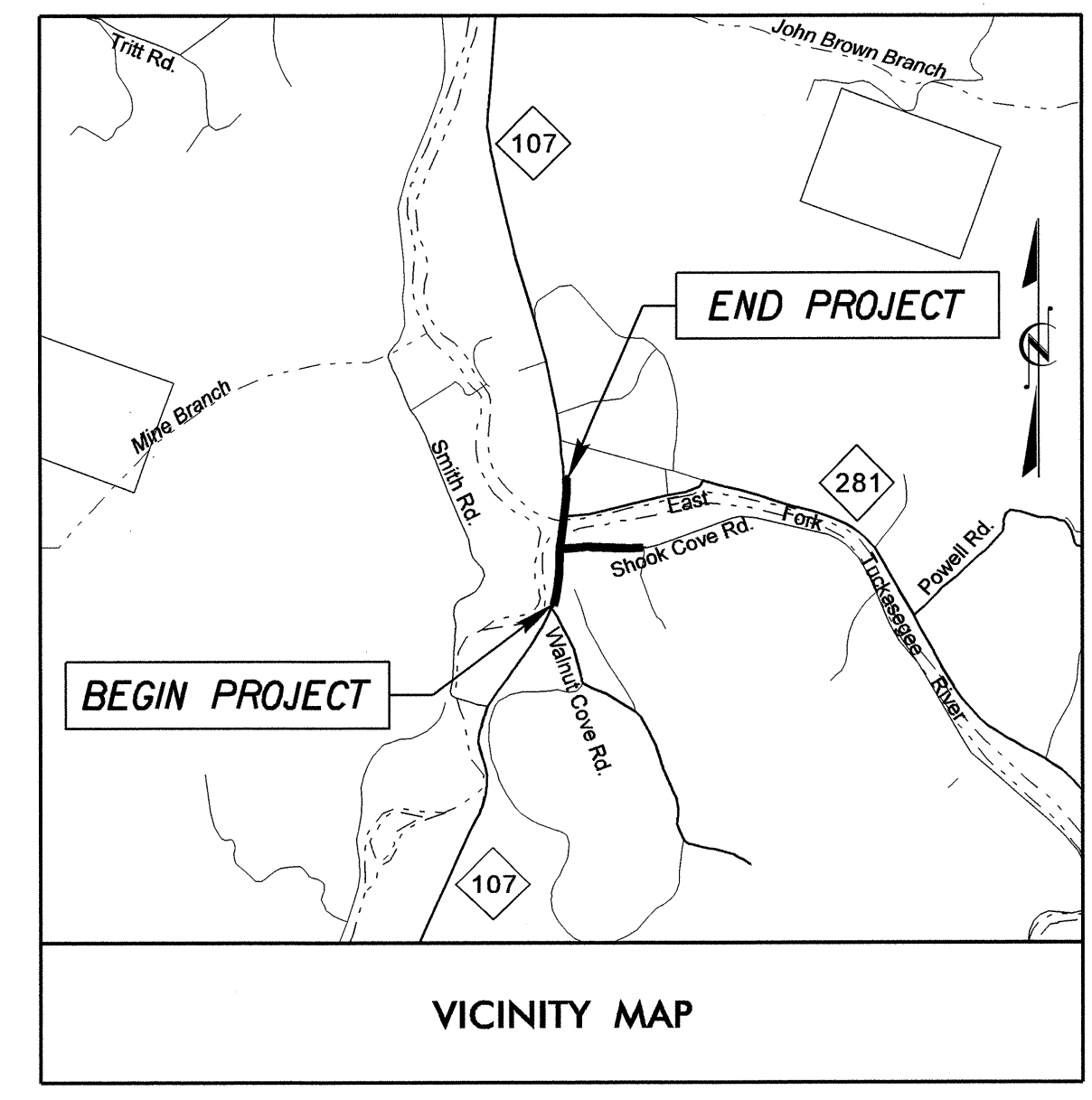
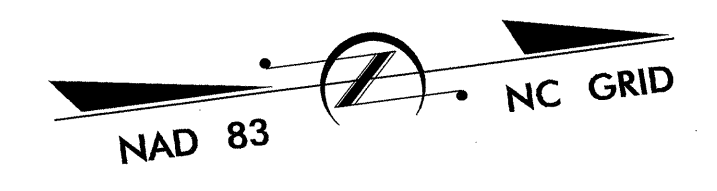
09/08/99

T.I.P. NO.	SHEET NO.
B-3480	UO-1

TIP PROJECT: B-3480

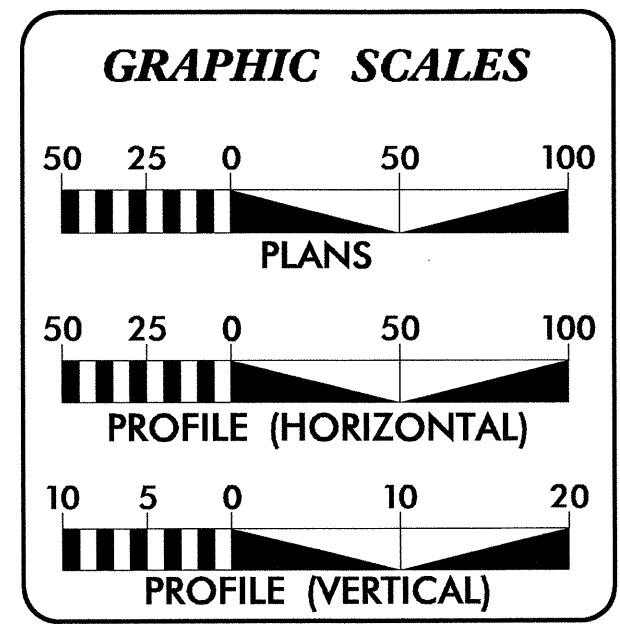
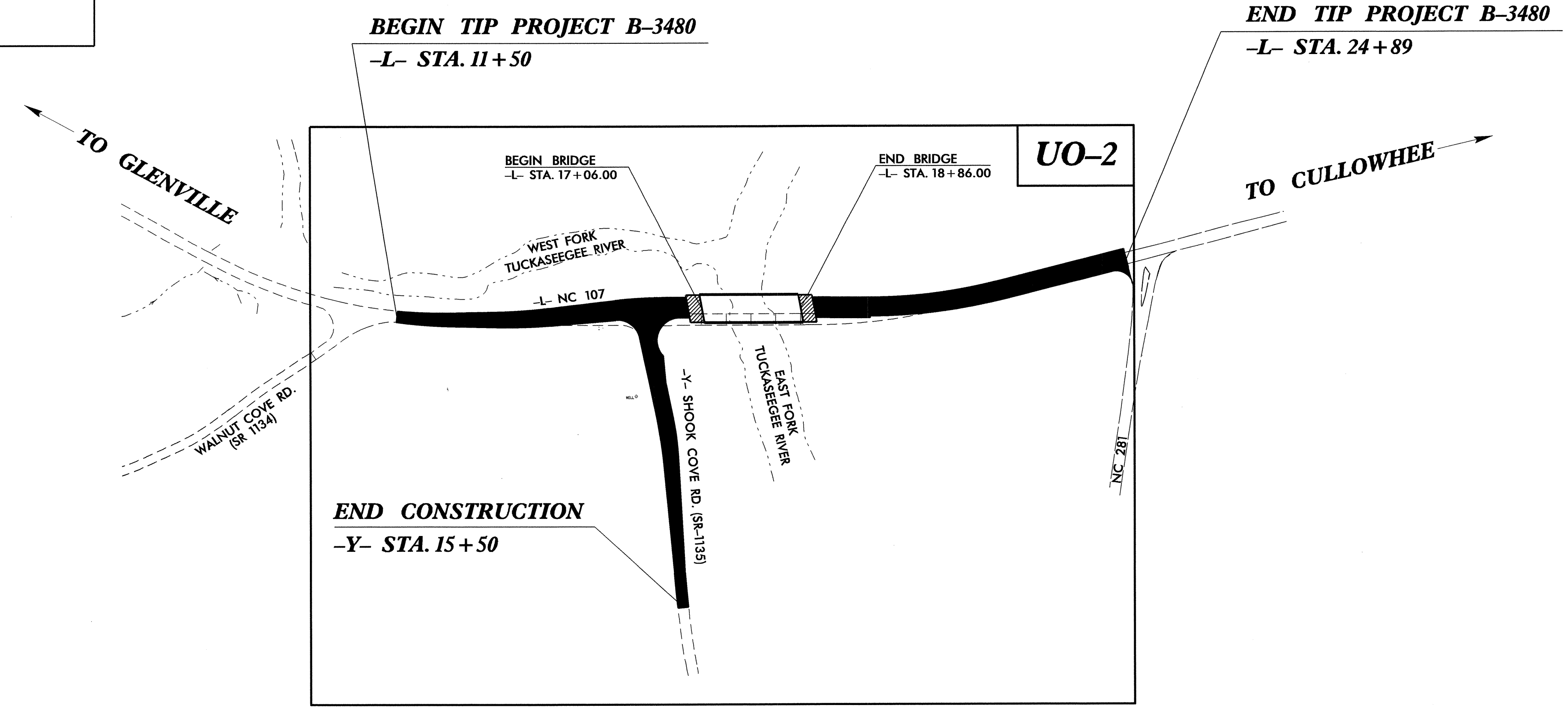
STATE OF NORTH CAROLINA
DIVISION OF HIGHWAYS

**UTILITIES BY OTHERS PLANS
JACKSON COUNTY**



**LOCATION: REPLACEMENT OF BRIDGE NO. 39 OVER
EAST FORK TUCKASEGEE RIVER ON NC 107**

TYPE OF WORK: AERIAL POWER AND TELEPHONE UTILITIES

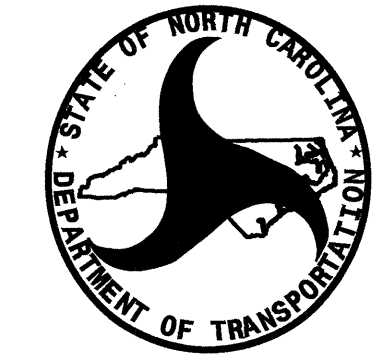


INDEX OF SHEETS

SHEET NO.	DESCRIPTION
UO-1	TITLE SHEET
UO-2	UTILITIES BY OTHERS PLAN SHEET

UTILITY OWNERS ON PROJECT

(1) VERIZON SOUTH - TELEPHONE
(2) DUKE ENERGY - POWER DISTRIBUTION



PREPARED IN THE OFFICE OF:
**DIVISION OF HIGHWAYS
UTILITIES ENGINEERING
SECTION**

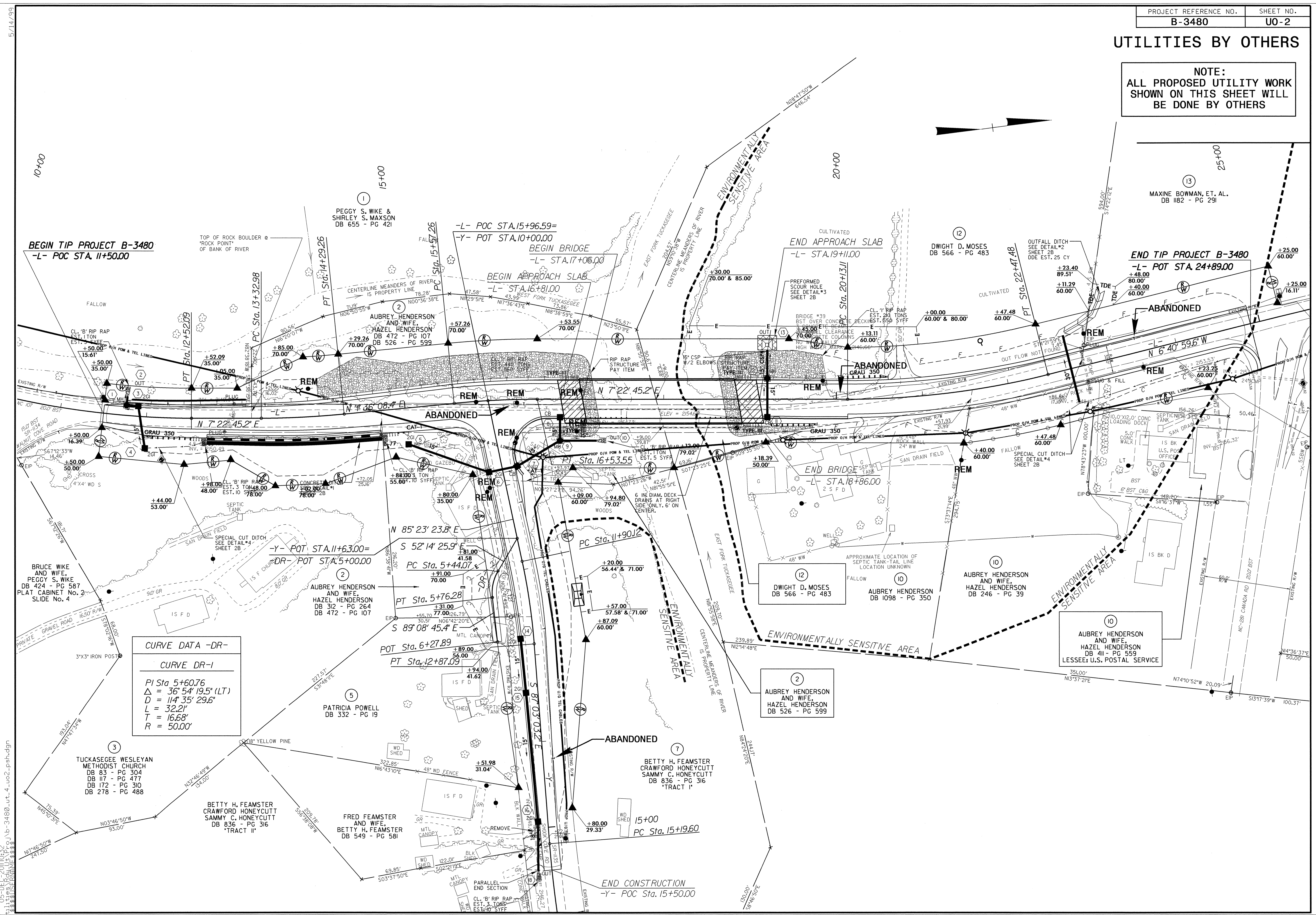
1555 MAIL SERVICES CENTER
RALEIGH NC 27699-1555
PHONE (919) 707-6690
FAX (919) 250-4119

Roger Worthington, P.E. UTILITIES SECTION ENGINEER
Carl A. Barclay, P.E. UTILITIES SQUAD LEADER PROJECT ENGINEER
James E. Swinson UTILITIES PROJECT DESIGNER

05-DEC-2011 10:31
R:\Utilities\RDY\UT\Proj\B-3480_UT_title_uo1_psh.dgn
\$\$\$\$\$USERNAME\$\$\$\$\$

UTILITIES BY OTHERS

NOTE:
 ALL PROPOSED UTILITY WORK
 SHOWN ON THIS SHEET WILL
 BE DONE BY OTHERS



BEGIN TIP PROJECT B-3480
 -L- POC STA. 11+50.00

END TIP PROJECT B-3480
 -L- POT STA. 24+89.00

CURVE DATA -DR-
 CURVE DR-1
 PI Sta. 5+60.76
 $\Delta = 36^\circ 54' 19.5" (LT)$
 $D = 114' 35" 29.6"$
 $L = 32.21'$
 $T = 16.68'$
 $R = 50.00'$

05-DEC-2011 10:32 R:\Utilities\2011\Proj\B-3480\ut_4_uo2_psh.dgn
 5/14/99