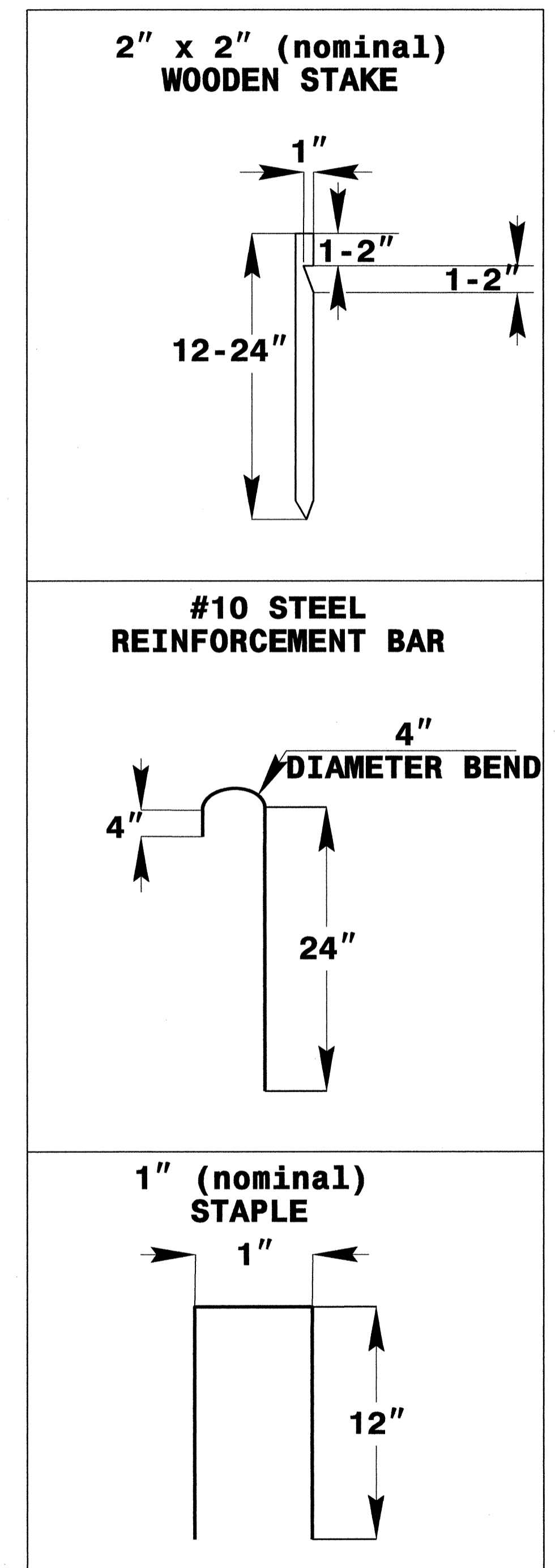
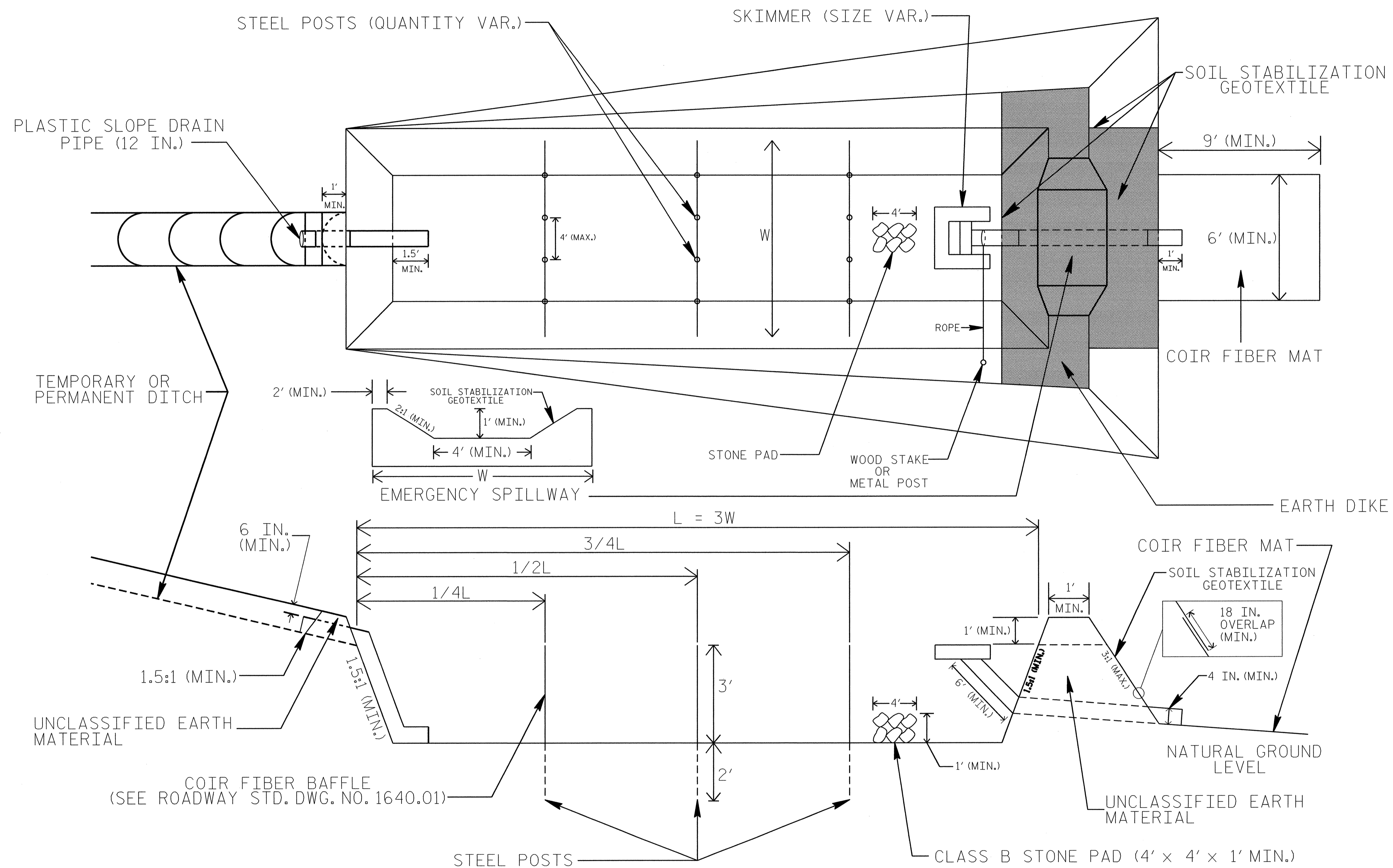


PROJECT REFERENCE NO. B-3480	SHEET NO. EC-2
RW SHEET NO.	
ROADWAY DESIGN ENGINEER	HYDRAULICS ENGINEER

SKIMMER BASIN WITH BAFFLES DETAIL



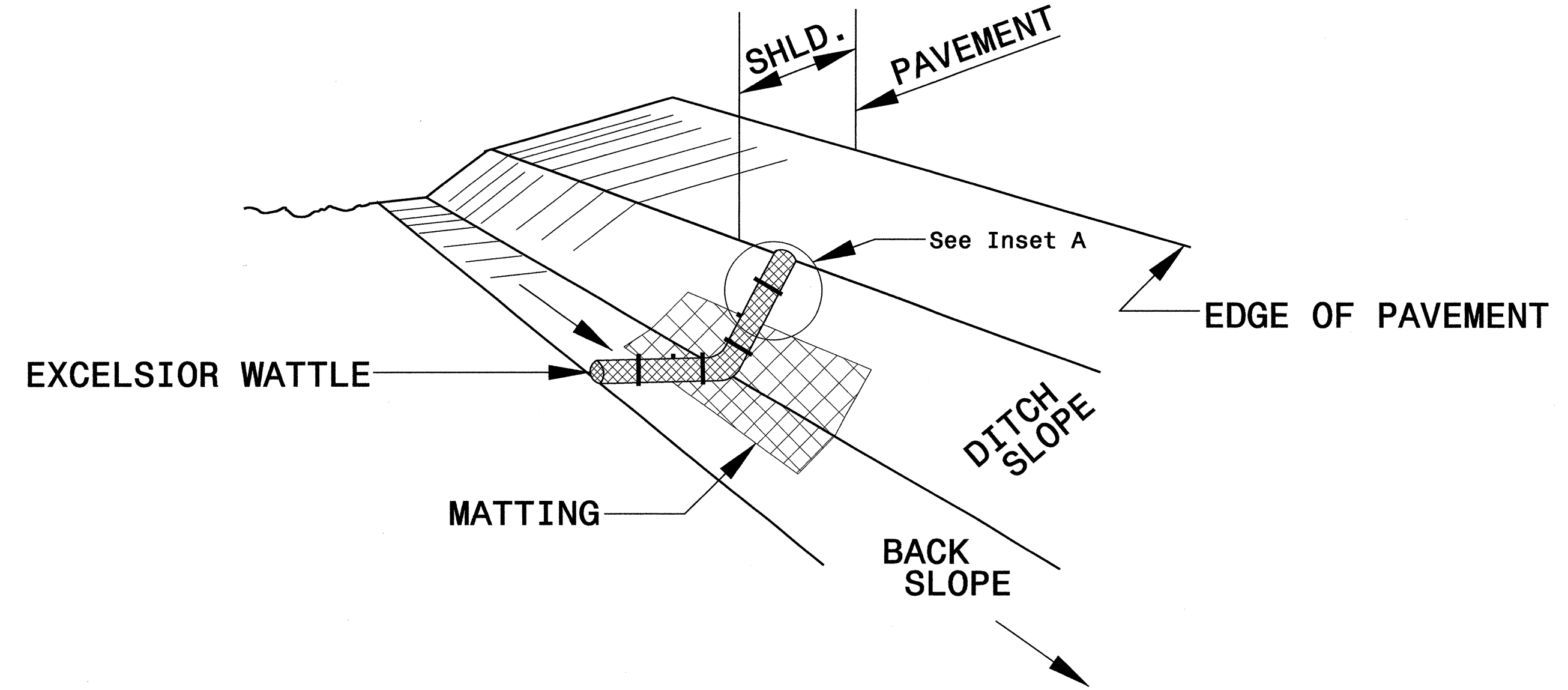
NOTES

1. SEED AND PLACE MATTING FOR EROSION CONTROL ON INTERIOR AND EXTERIOR SIDESLOPES.
2. LIMIT EARTH DIKE HEIGHT TO 5 FT.
3. FOR BASIN DEPTH OF 3 FT., THE MINIMUM BASIN WIDTH SHALL BE 9 FT.
4. DETERMINE EMERGENCY SPILLWAY LENGTH (FT.) USING $Q/0.8$, WHERE Q IS FLOW RATE (CFS) INTO BASIN.
5. PLASTIC SLOPE DRAIN PIPE AT INLET OF BASIN MAY BE REPLACED BY FILTRATION GEOTEXTILE AS DIRECTED.
6. SOIL STABILIZATION GEOTEXTILE FOR EMERGENCY SPILLWAY SHALL BE ONE CONTINUOUS PIECE OF MATERIAL OR OVERLAPPED 18 IN. (MIN.)

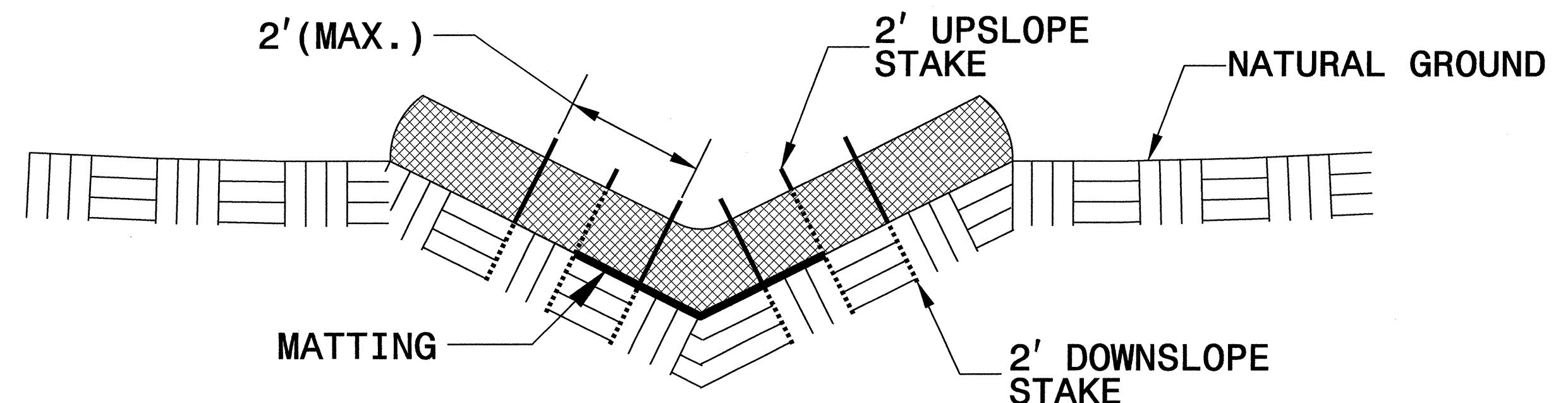
NOT TO SCALE

PROJECT REFERENCE NO. B-3480	SHEET NO. EC-2A
RW SHEET NO.	
ROADWAY DESIGN ENGINEER	HYDRAULICS ENGINEER

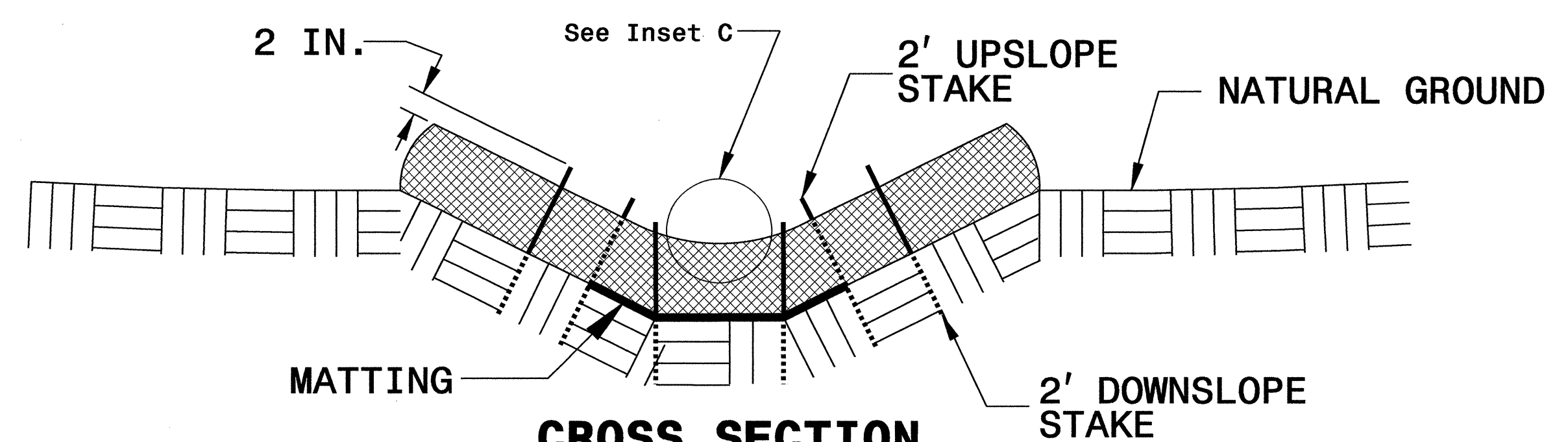
WATTLE WITH POLYACRYLAMIDE (PAM) DETAIL



ISOMETRIC VIEW



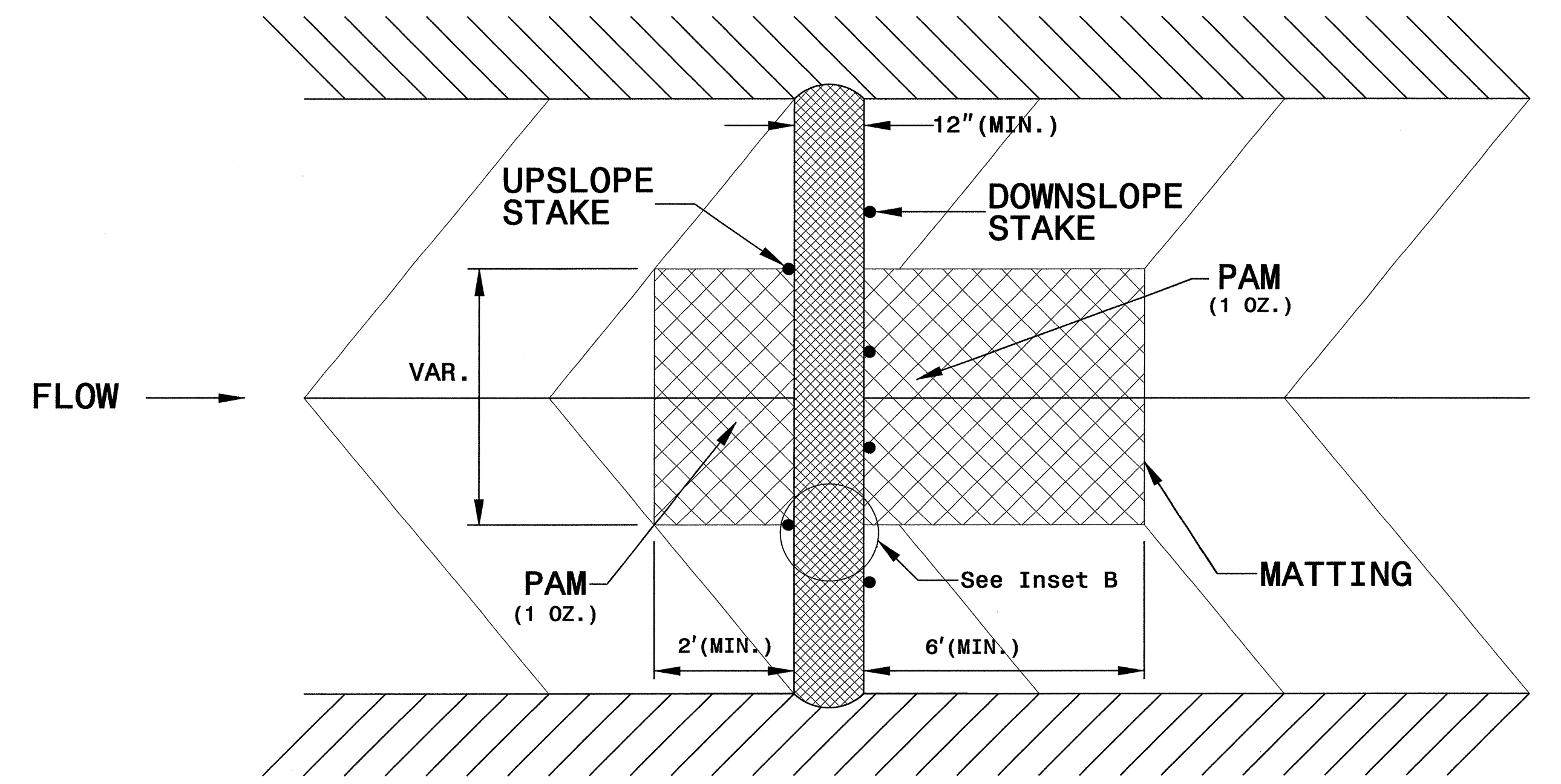
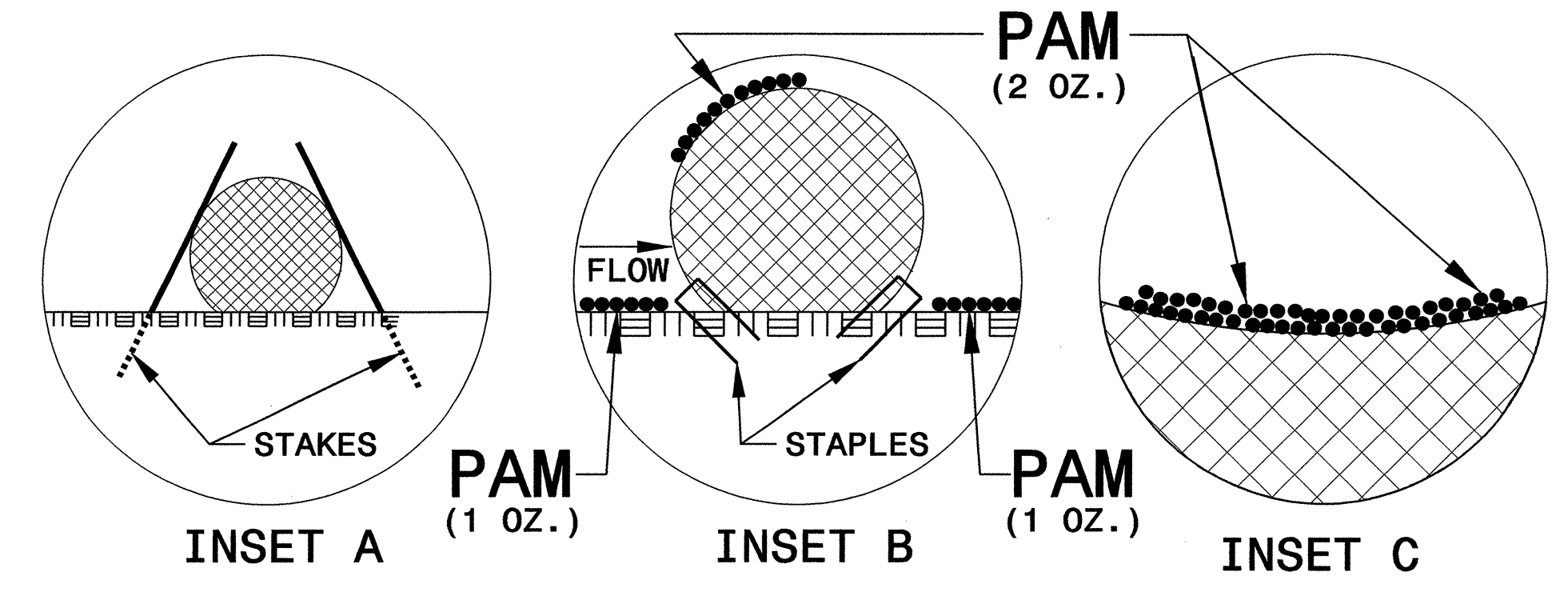
CROSS SECTION VEE DITCH



CROSS SECTION TRAPEZOIDAL DITCH

NOTES:

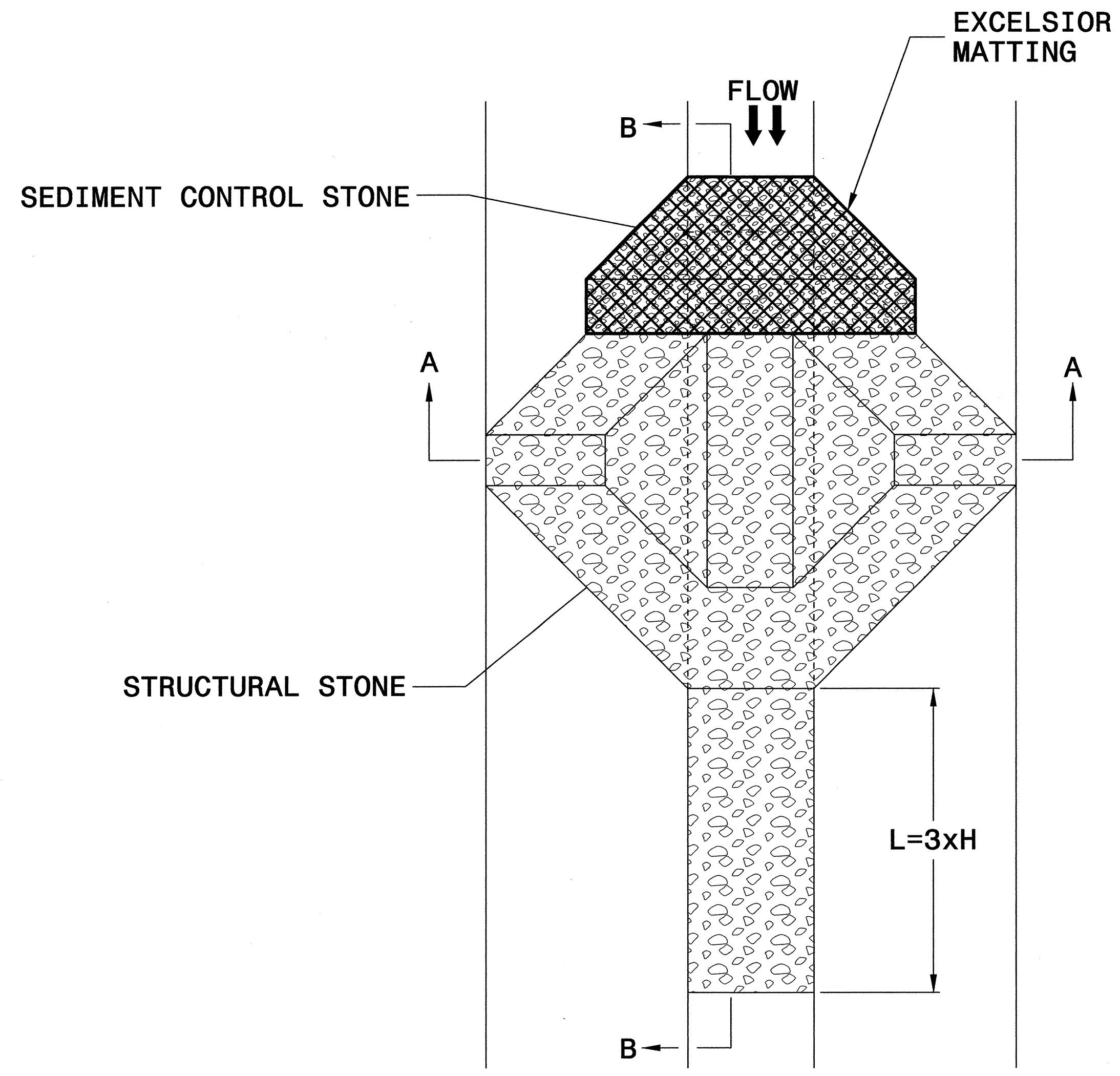
- USE MINIMUM 12 IN. DIAMETER EXCELSIOR WATTLE.
- USE 2 FT. WOODEN STAKES WITH A 2 IN. BY 2 IN. NOMINAL CROSS SECTION.
- ONLY INSTALL WATTLE(S) TO A HEIGHT IN DITCH SO FLOW WILL NOT WASH AROUND WATTLE AND SCOUR DITCH SLOPES AND AS DIRECTED.
- INSTALL A MINIMUM OF 2 UPSLOPE STAKES AND 4 DOWNSLOPE STAKES AT AN ANGLE TO WEDGE WATTLE TO BOTTOM OF DITCH.
- PROVIDE STAPLES MADE OF 0.125 IN. DIAMETER STEEL WIRE FORMED INTO A U SHAPE NOT LESS THAN 12" IN LENGTH.
- INSTALL STAPLES APPROXIMATELY EVERY 1 LINEAR FOOT ON BOTH SIDES OF WATTLE AND AT EACH END TO SECURE IT TO THE SOIL.
- INSTALL MATTING IN ACCORDANCE WITH SECTION 1631 OF THE STANDARD SPECIFICATIONS.
- PRIOR TO POLYACRYLAMIDE (PAM) APPLICATION, OBTAIN A SOIL SAMPLE FROM PROJECT LOCATION, AND FROM OFFSITE MATERIAL, AND ANALYZE FOR APPROPRIATE PAM FLOCCULANT TO BE APPLIED TO EACH WATTLE.
- INITIALLY APPLY 2 OUNCES OF ANIONIC OR NEUTRALLY CHARGED PAM OVER WATTLE WHERE WATER WILL FLOW AND 1 OUNCE OF PAM ON MATTING ON EACH SIDE OF WATTLE. REAPPLY PAM AFTER EVERY RAINFALL EVENT THAT IS EQUAL TO OR EXCEEDS 0.50 IN.



TOP VIEW

PROJECT REFERENCE NO. B-3480	SHEET NO. EC-2B
RW SHEET NO.	
ROADWAY DESIGN ENGINEER	HYDRAULICS ENGINEER

TEMPORARY ROCK SILT CHECK TYPE 'A' WITH EXCELSIOR MATTING AND POLYACRYLAMIDE (PAM)



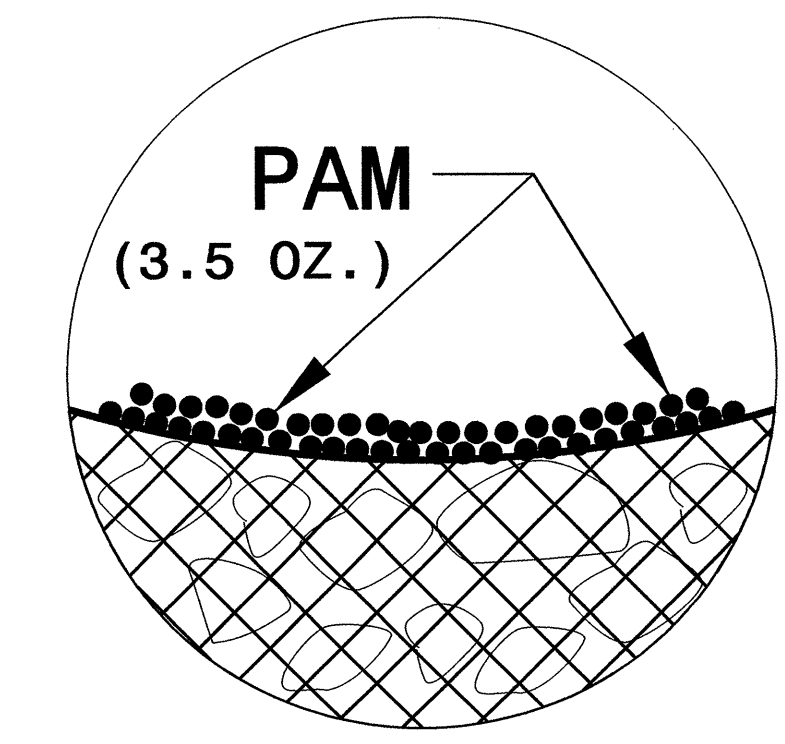
PLAN

NOTES

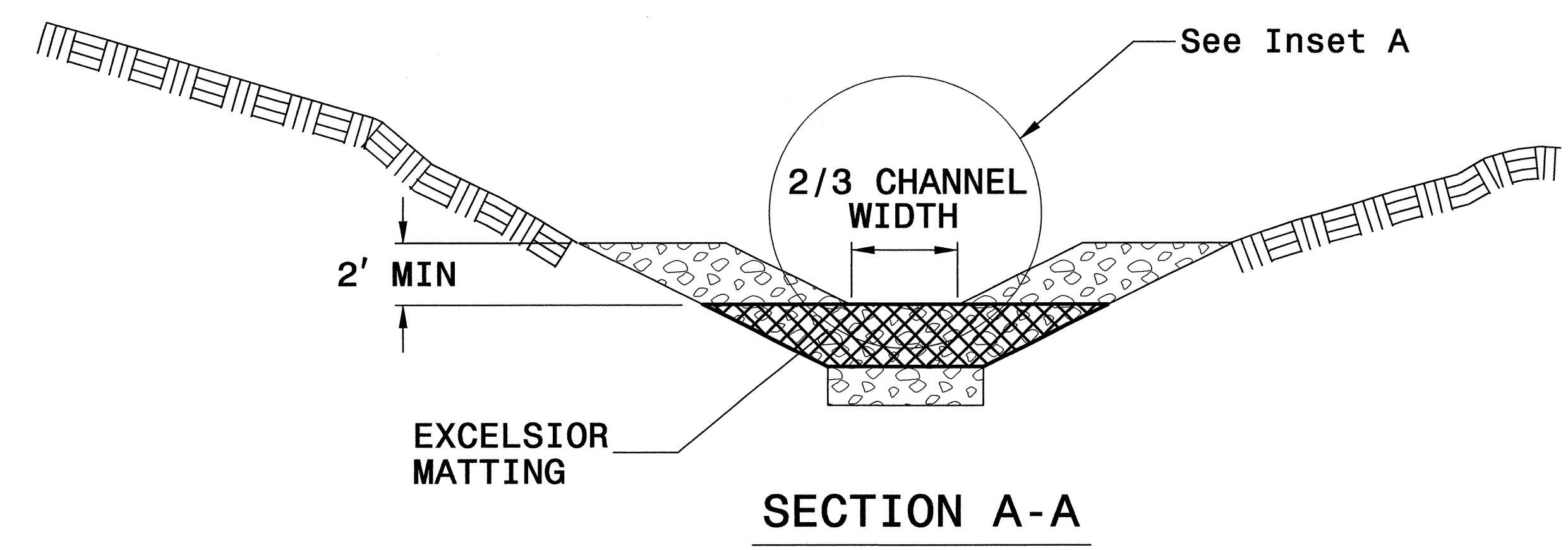
USE EXCELSIOR FOR MATTING MATERIAL AND ANCHOR MATTING SECTION AT TOP AND BOTTOM WITH CLASS B STONE.

PRIOR TO POLYACRYLAMIDE (PAM) APPLICATION, OBTAIN A SOIL SAMPLE FROM PROJECT LOCATION, AND FROM OFFSITE MATERIAL, AND ANALYZE FOR APPROPRIATE PAM FLOCCULANT TO BE APPLIED TO EACH ROCK SILT CHECK.

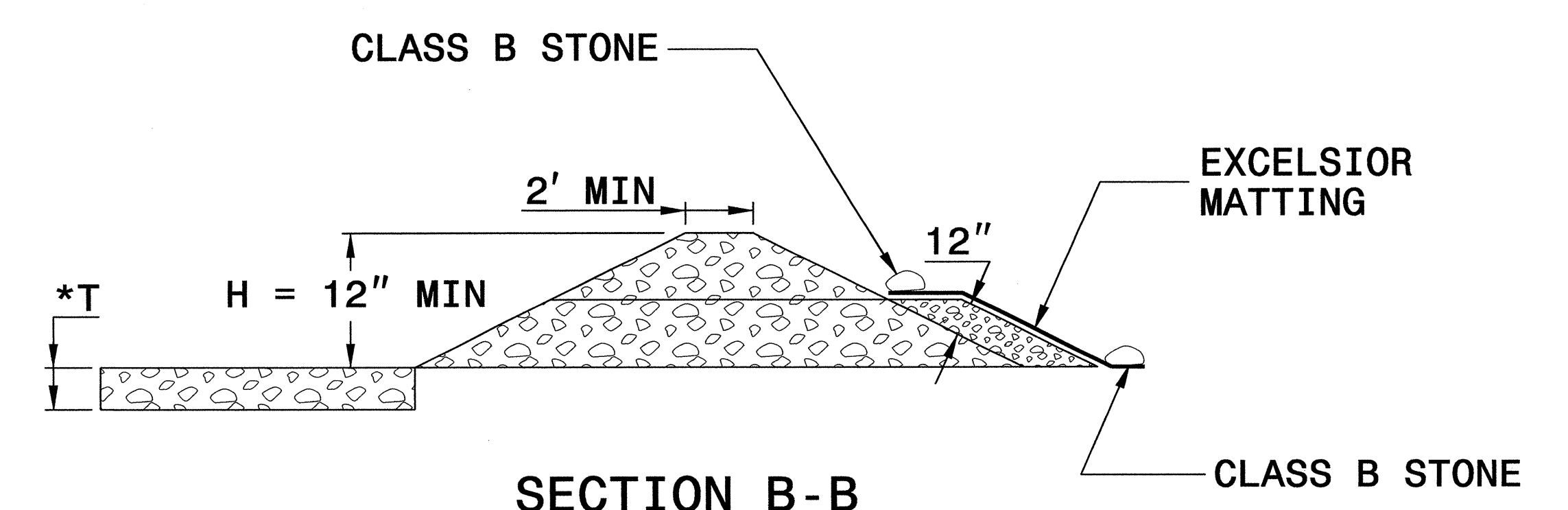
INITIALLY APPLY 3.5 OUNCES OF POLYACRYLAMIDE (PAM) TO TOP OF MATTING SECTION AND AFTER EVERY RAINFALL EVENT THAT EQUALS OR EXCEEDS 0.50 INCHES.



INSET A



SECTION A-A



SECTION B-B

*T = 12" MIN., 18" MAX.

NOT TO SCALE

DIVISION OF HIGHWAYS
STATE OF NORTH CAROLINA

PROJECT REFERENCE NO. <i>B-3480</i>	SHEET NO. <i>EC-3A</i>
ROADWAY DESIGN ENGINEER	HYDRAULICS ENGINEER

SOIL STABILIZATION TIMEFRAMES

<i>SITE DESCRIPTION</i>	<i>STABILIZATION TIME</i>	<i>TIMEFRAME EXCEPTIONS</i>
PERIMETER DIKES, SWALES, DITCHES AND SLOPES	7 DAYS	NONE
HIGH QUALITY WATER (HQW) ZONES	7 DAYS	NONE
SLOPES STEEPER THAN 3:1	7 DAYS	IF SLOPES ARE 10' OR LESS IN LENGTH AND ARE NOT STEEPER THAN 2:1, 14 DAYS ARE ALLOWED.
SLOPES 3:1 OR FLATTER	14 DAYS	7 DAYS FOR SLOPES GREATER THAN 50' IN LENGTH.
ALL OTHER AREAS WITH SLOPES FLATTER THAN 4:1	14 DAYS	NONE, EXCEPT FOR PERIMETERS AND HQW ZONES.

8/17/99
 06-DEC-2011 12:08
 R:\Environmental\Design\3480_EC_psh_4.dgn
 AT RENEWAL

NOTE:
 UTILIZE SPECIAL STILLING BASIN WHERE APPLICABLE

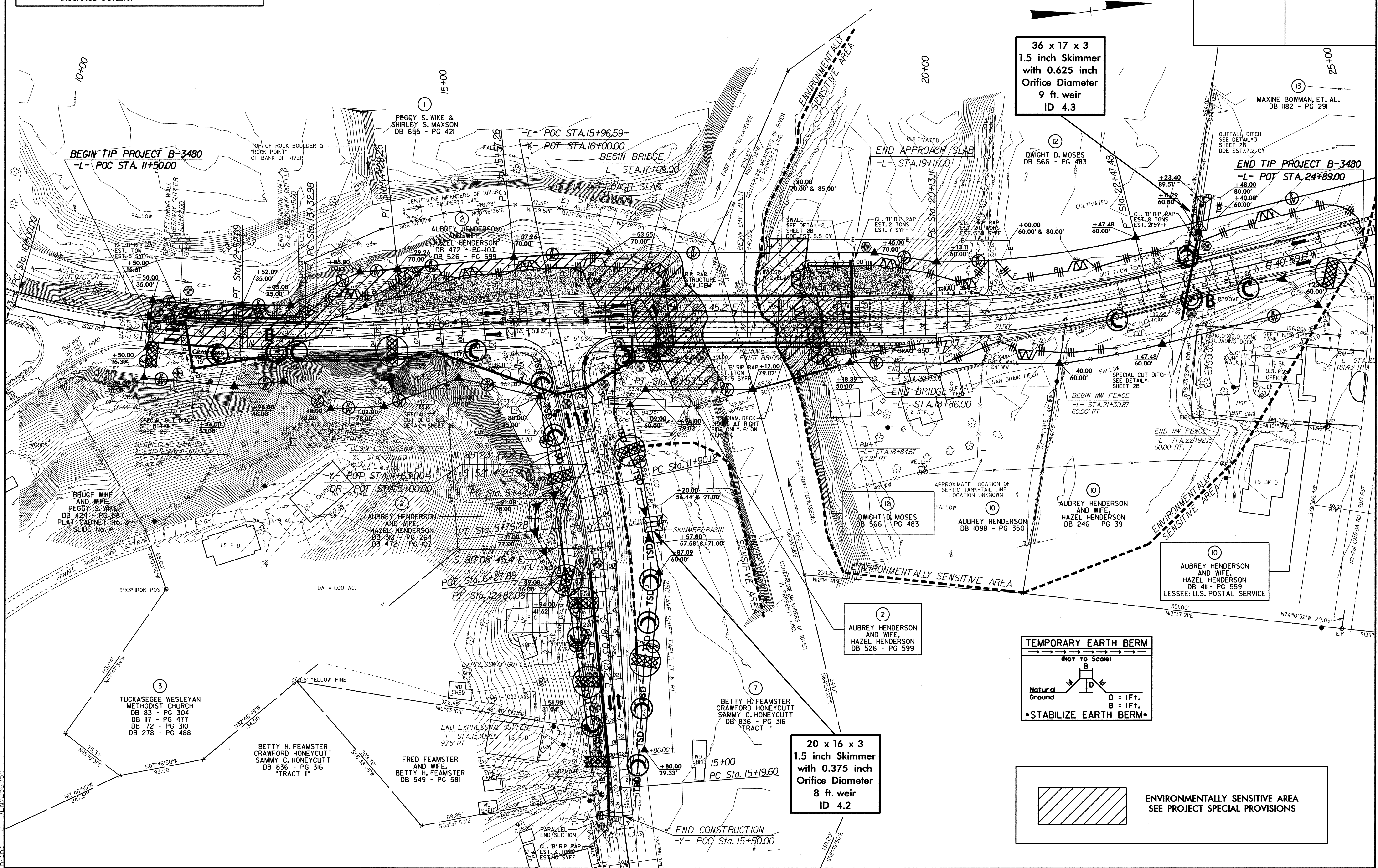
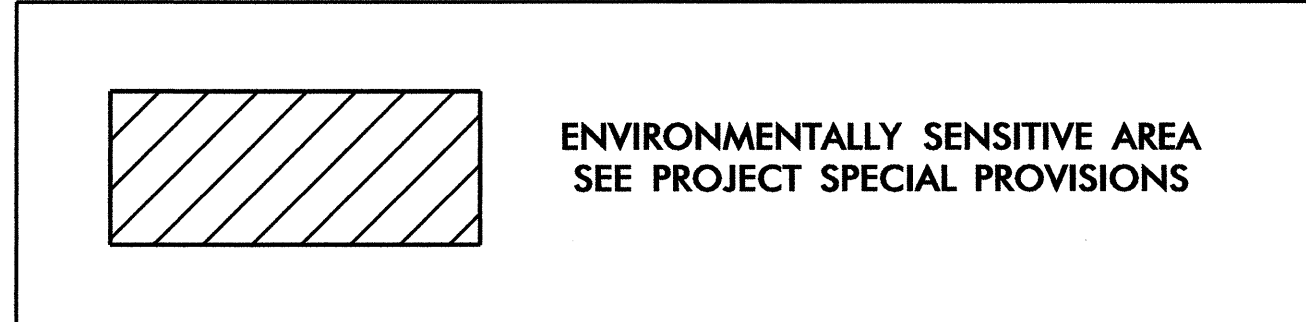
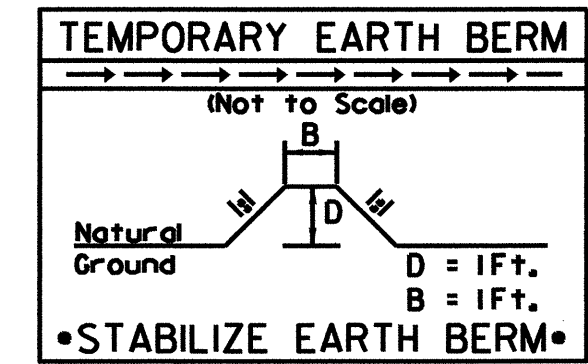
NOTE:
 PLACE TEMPORARY ROCK SEDIMENT DAMS TYPE - B
 AND TEMPORARY ROCK SILT CHECKS TYPE - A AT
 DRAINAGE OUTLETS.

**CLEARING AND GRUBBING
 EROSION CONTROL FOR
 CONSTRUCTION SHEET 4**

PROJECT REFERENCE NO. B-3480	SHEET NO. EC-4/CONST.4
RW DESIGN NO.	HYDRAULICS
ENGINEER	ENGINEER

**36 x 17 x 3
 1.5 inch Skimmer
 with 0.625 inch
 Orifice Diameter
 9 ft. weir
 ID 4.3**

**20 x 16 x 3
 1.5 inch Skimmer
 with 0.375 inch
 Orifice Diameter
 8 ft. weir
 ID 4.2**



10
 AUBREY HENDERSON
 AND WIFE,
 HAZEL HENDERSON
 DB 411 - PG 559
 LESSEE: U.S. POSTAL SERVICE

2
 AUBREY HENDERSON
 AND WIFE,
 HAZEL HENDERSON
 DB 526 - PG 599

7
 BETTY H. FEAMSTER
 CRAWFORD HONEYCUTT
 SAMMY C. HONEYCUTT
 DB 836 - PG 316
 TRACT I

**FRED FEAMSTER
 AND WIFE,
 BETTY H. FEAMSTER
 DB 549 - PG 581**

**BETTY H. FEAMSTER
 CRAWFORD HONEYCUTT
 SAMMY C. HONEYCUTT
 DB 836 - PG 316
 TRACT II**

3
 TUCKASEE WESLEYAN
 METHODIST CHURCH
 DB 83 - PG 304
 DB 117 - PG 477
 DB 172 - PG 310
 DB 278 - PG 488

**BRUCE WIKE
 AND WIFE,
 PEGGY S. WIKE
 DB 424 - PG 587
 PLAT CABINET No. 2
 SLIDE No. 4**

**PEGGY S. WIKE &
 SHIRLEY S. MAXSON
 DB 655 - PG 421**

12
 DWIGHT D. MOSES
 DB 566 - PG 483

13
 MAXINE BOWMAN, ET. AL.
 DB 1182 - PG 291

**END TIP PROJECT B-3480
 -L- POT STA. 24+89.00**

**BEGIN TIP PROJECT B-3480
 -L- POC STA. 11+50.00**

**BEGIN BRIDGE
 -L- STA. 17+06.00**

**END APPROACH SLAB
 -L- STA. 19+11.00**

**DR - POT STA. 5+00.00
 -Y- STA. 15+00.00**

**END BRIDGE
 -L- STA. 18+86.00**

**15+00
 PC Sta. 15+1960**

**END CONSTRUCTION
 -Y- POC Sta. 15+50.00**

8/17/99

8/17/99

NOTE: UTILIZE SPECIAL STILLING BASIN WHERE APPLICABLE

PROJECT REFERENCE NO. B-3480		SHEET NO. EC-5/CONST.4	
RAW SHEET NO.			
ROADWAY DESIGN ENGINEER		HYDRAULICS ENGINEER	

Place Rock Plating on Slope as Work Allows.

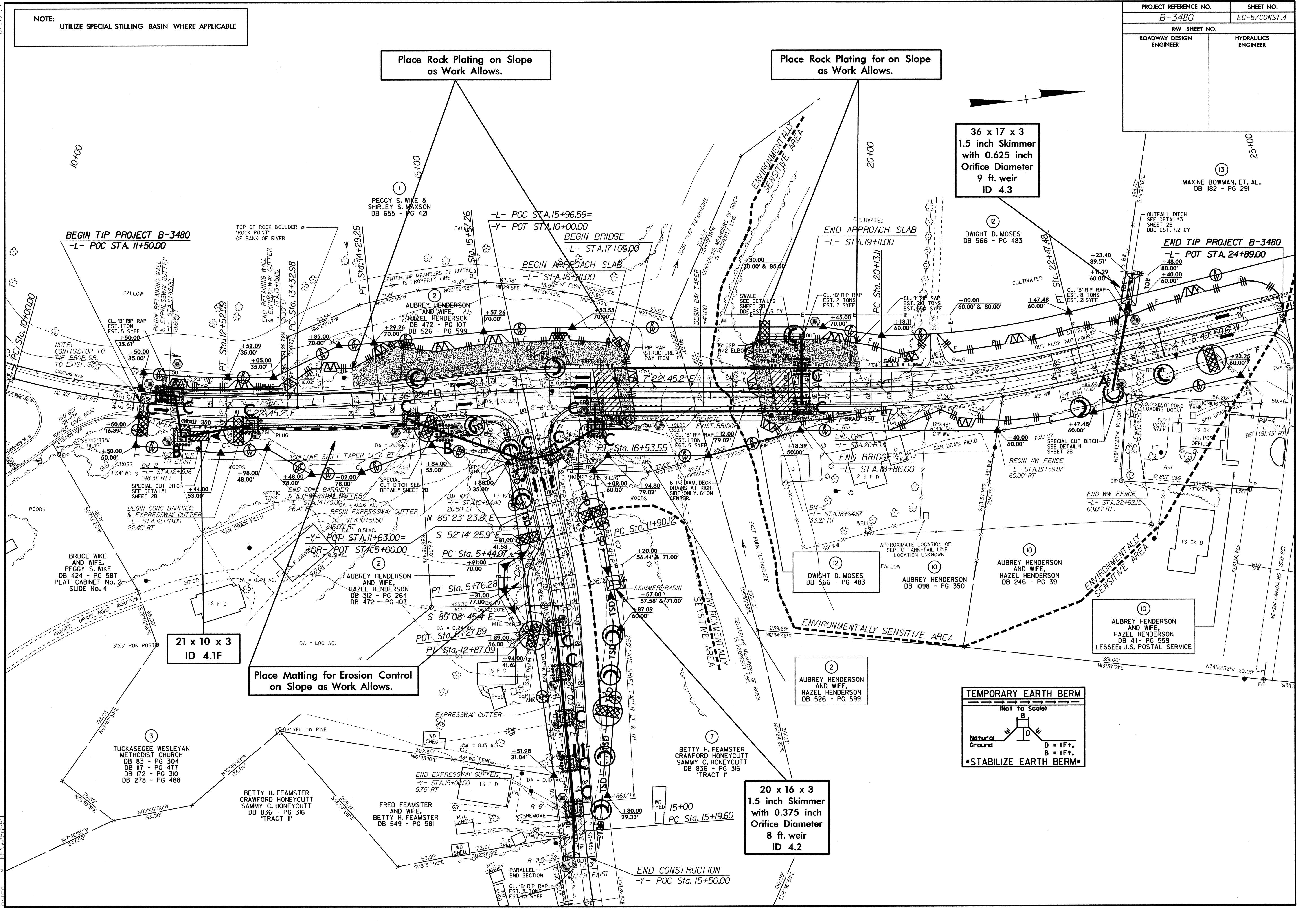
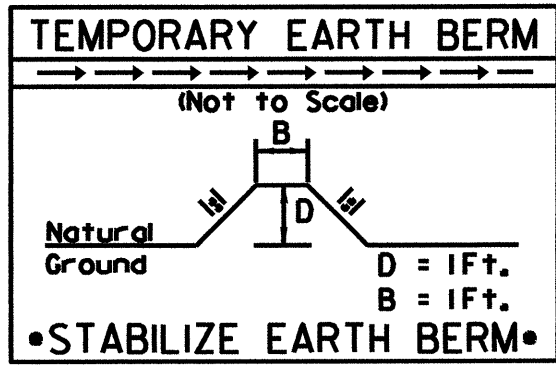
Place Rock Plating for on Slope as Work Allows.

36 x 17 x 3
1.5 inch Skimmer
with 0.625 inch
Orifice Diameter
9 ft. weir
ID 4.3

21 x 10 x 3
ID 4.1F

20 x 16 x 3
1.5 inch Skimmer
with 0.375 inch
Orifice Diameter
8 ft. weir
ID 4.2

Place Matting for Erosion Control on Slope as Work Allows.



Q:\DEC-2011\206... Design\B3480-EC-psh-4.dgn