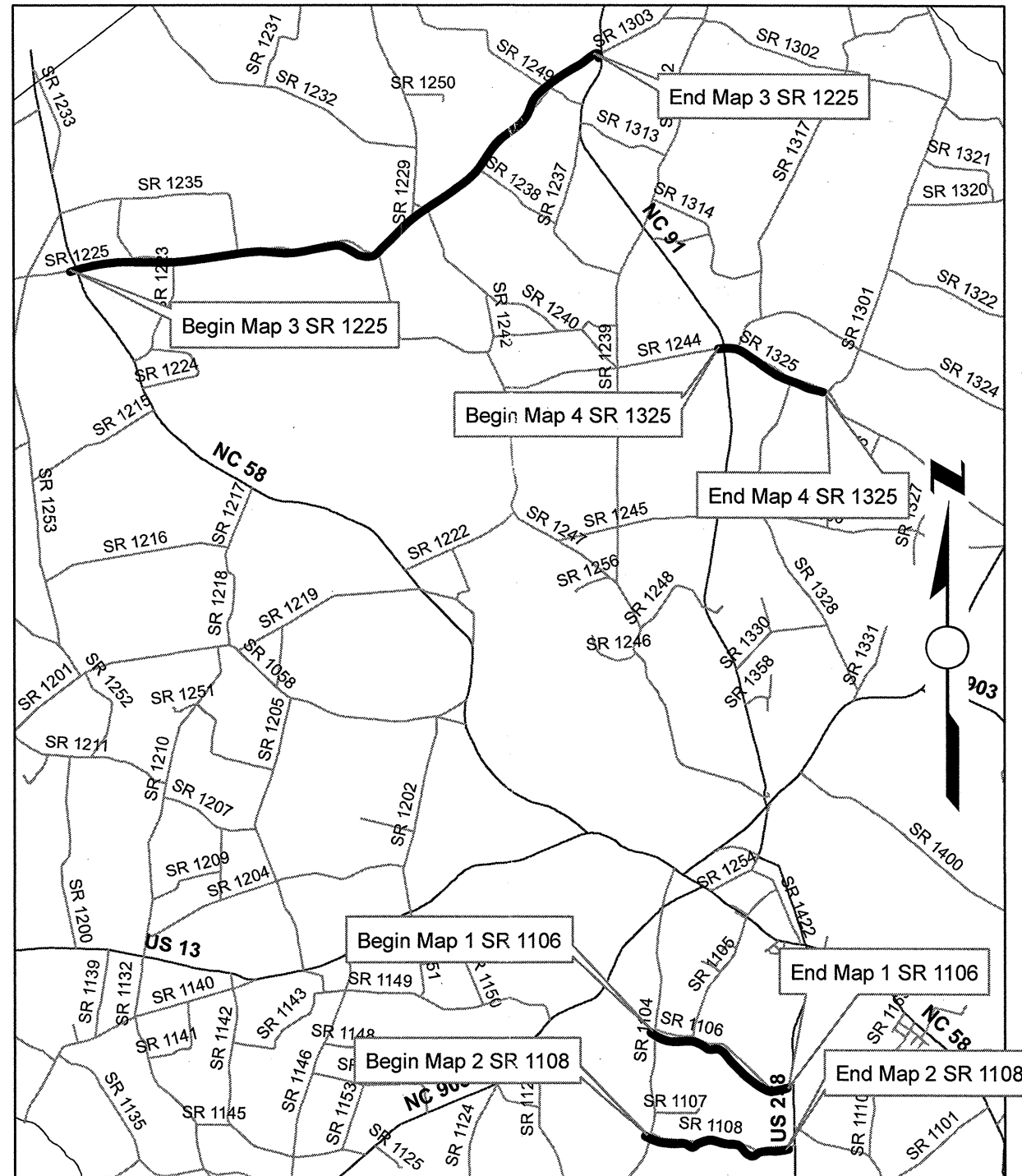


LOCATION MAP

Project Reference No.	Sheet No.
2CR.20401.7	1



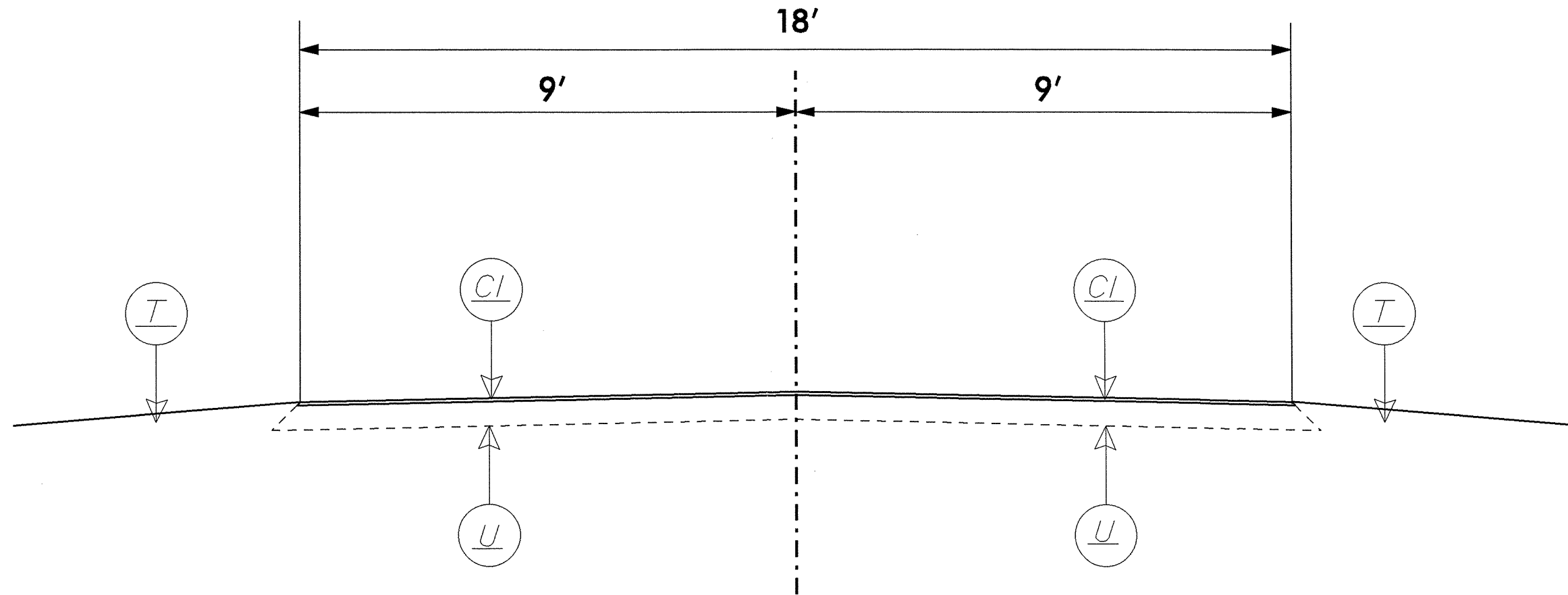
GREENE COUNTY

RESURFACING 4 SECTIONS OF SECONDARY ROADS
1 3/4 INCHES OF BCSC TYPE SF9.5A

10/26/08

C1	PROP APPROX, 1 3/4" ASPHALT CONCRETE SURFACE COURSE, TYPE, SF9.5A, AT AN AVERAGE RATE OF 192.5 LBS PER SQ YD
T	SHOULDER RECONSTRUCTION (BY OTHERS)
U	EXISTING PAVEMENT

GREENE COUNTY 2012 RESURFACING

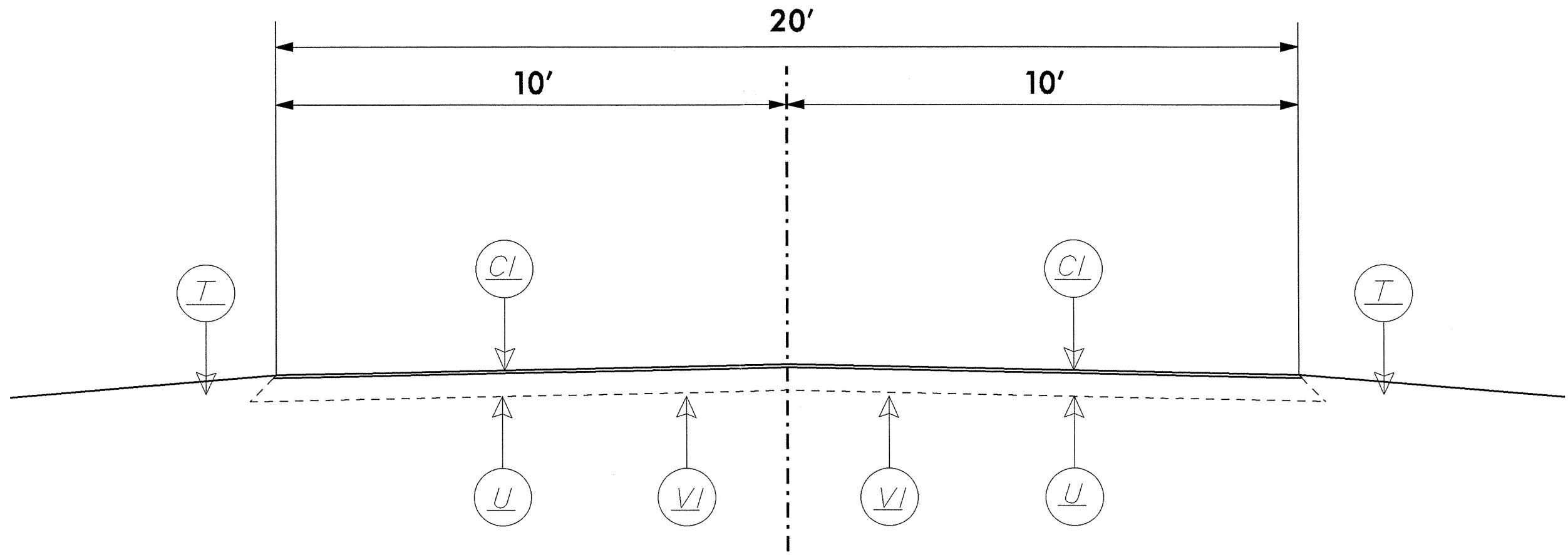


TYPICAL SECTION #1
USE FOR MAP 1, 2 AND 4

18-JAN-2012 16:58
 \resurfacing\projects\Division 2\greene\20120-greeneResurf_dist3_tupl.dgn

C1	PROP APPROX, 1 3/4" ASPHALT CONCRETE SURFACE COURSE, TYPE, SF9.5A, AT AN AVERAGE RATE OF 192.5 LBS PER SQ YD
T	SHOULDER RECONSTRUCTION (BY OTHERS)
VI	INCIDENTAL MILLING, AS DIRECTED BY ENGINEER
U	EXISTING PAVEMENT

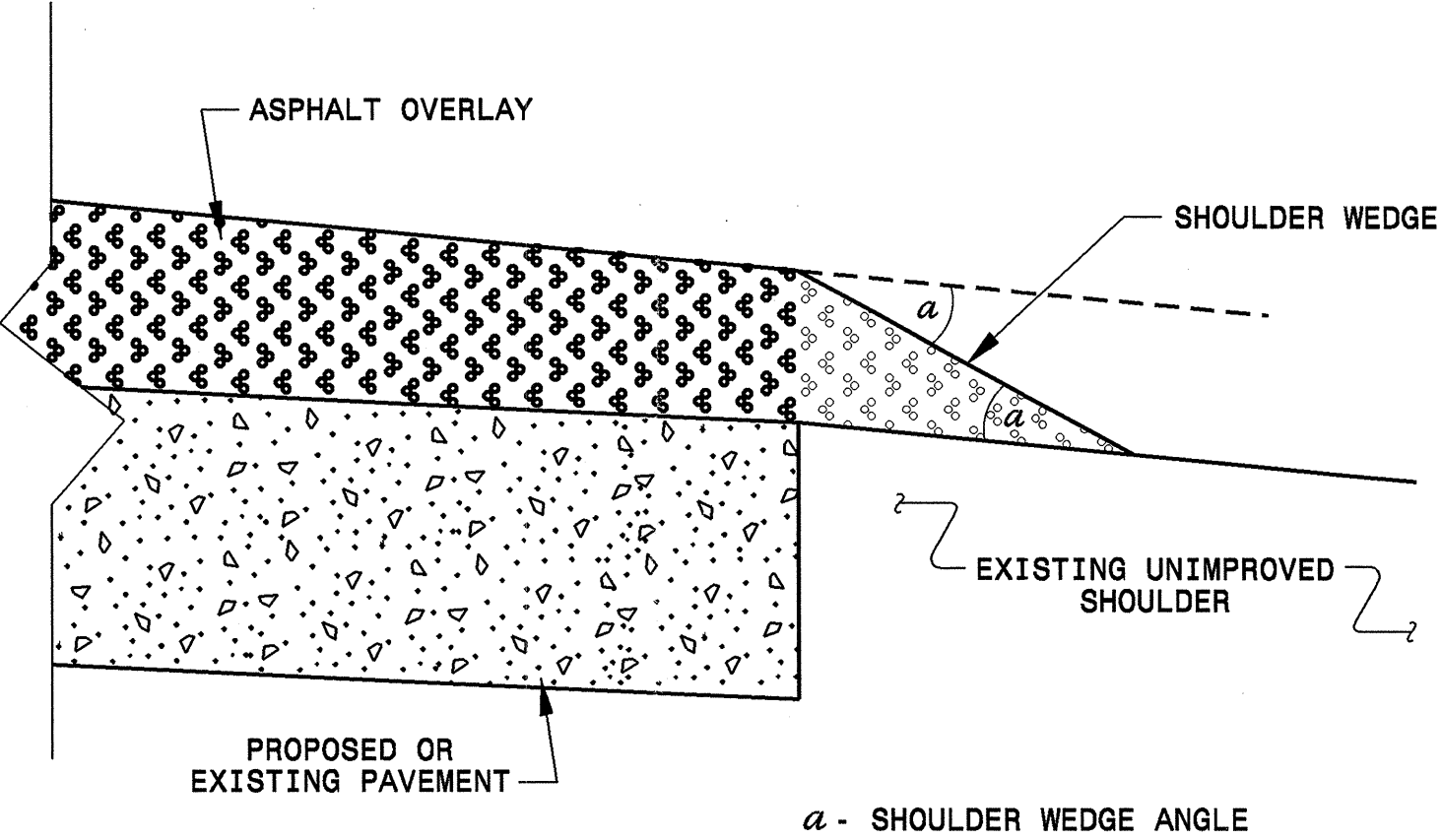
GREENE COUNTY 2012 RESURFACING



TYPICAL SECTION #2

USE FOR MAP #3

PROJECT REFERENCE NO.	SHEET NO.
2CR.20401.7	4



SHOULDER WEDGE DETAIL

I8-IAN-2012-10651
 C:\misco\vehouder\p999\detail18aug2011.dgn
 P:\port-ter A\USD237485

CONTRACT STANDARDS AND DEVELOPMENT UNIT	
Office 919-707-6960 FAX 919-250-4119	
SHOULDER WEDGE DETAIL	
ORIGINAL BY: T.SPILL	DATE: 7-19-11
MODIFIED BY:	DATE:
CHECKED BY:	DATE:
FILE SPEC.: s:\user\details\stand\shoulderwedge\detail.dgn	

PROJECT NO.	SHEET NO.	TOTAL NO.
2CR.20401.7	5	

SUMMARY OF QUANTITIES

PROJECT NO	COUNTY	MAP NO	ROUTE	DESCRIPTION	TYP NO	FINAL SURFACE TESTING REQUIRED	LENGTH MI	WIDTH FT	INCIDENTAL MILLING SY	SURFACE COURSE, SF9.5A TONS	ASPHALT BINDER FOR PLANT MIX TONS	ADJ. OF METER OR VALVE BOX EA
2CR.20401.7	Greene	1	SR 1106	FROM SR 1104 TO US 258	1	NO	1.77	18		1,995	134	1
TOTAL FOR MAP NO. 1							1.77			1,995	134	1
2CR.20401.7	Greene	2	SR 1108	FROM 1104 TO US 258	1	NO	1.648	18		1,857	124	
TOTAL FOR MAP NO. 2							1.648			1,857	124	
2CR.20401.7	Greene	3	SR 1225	FROM NC 58 TO NC 91	2	NO	6.787	20	500	8,493	569	
TOTAL FOR MAP NO. 3							6.787		500	8,493	569	
2CR.20401.7	Greene	4	SR 1325	FROM NC 91 TO SR 1301	1	NO	1.286	18		1,449	97	
TOTAL FOR MAP NO. 4							1.286			1,449	97	
TOTAL FOR PROJ NO. 2CR.20401.7							11.491		500	13,794	924	1
GRAND TOTAL							11.491		500	13,794	924	1

Shoulder reconstruction, Pavement markings and erosion control will be accomplished by state forces.
 Incidental milling will be required on Map 3, SR 1225 approximately 100' each side of Bridge #1. The bridge will not be resurfaced.