

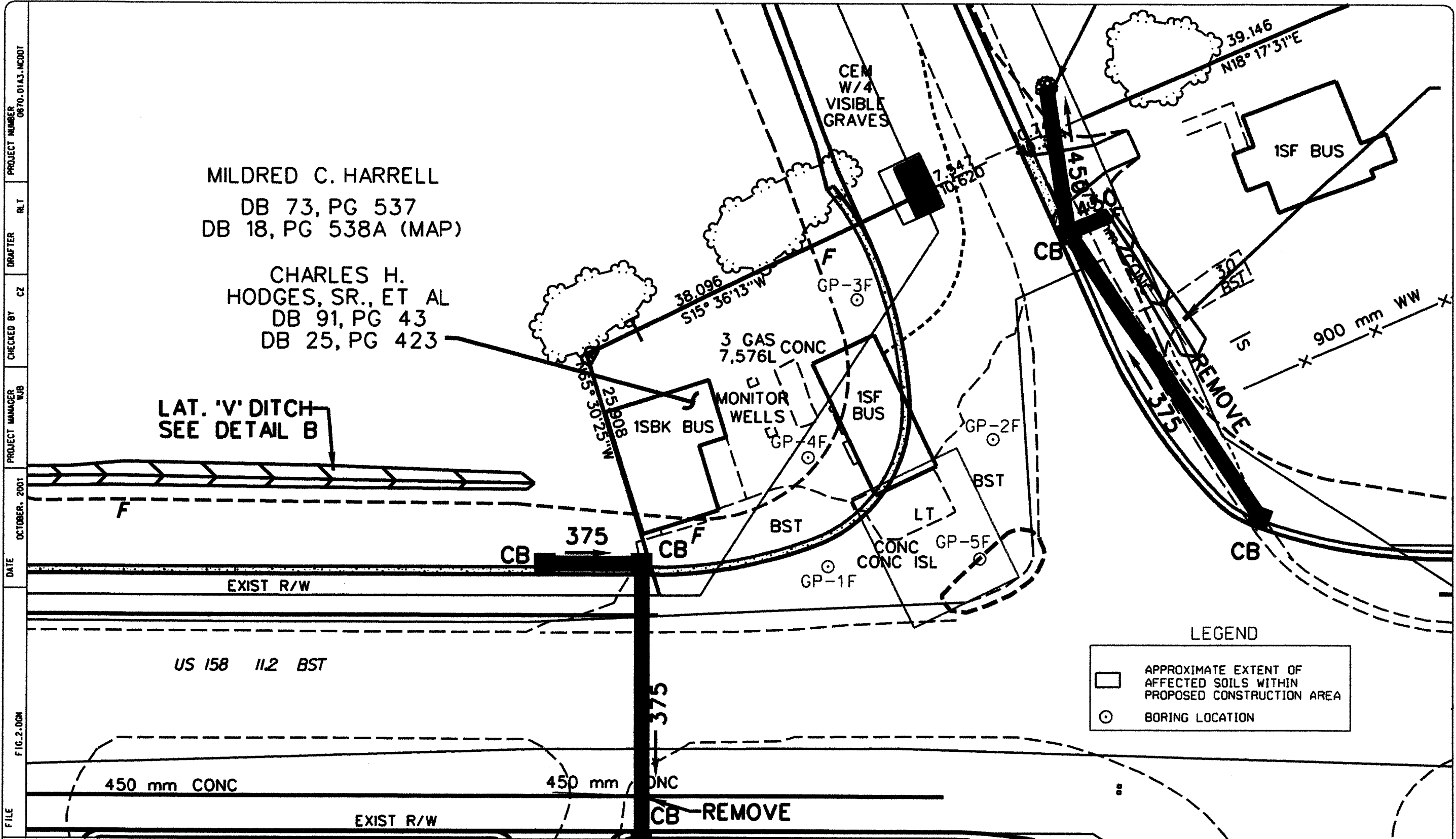
PROJECT NUMBER 0870-01A3.NDOT
 DRAFTER CZ
 CHECKED BY CZ
 PROJECT MANAGER GB
 DATE 11/05/01
 FILE FIG 1.0GN

3-D TopoQuads Copyright © 1999 DeLorme Yarmouth, ME 04096 1000 ft Scale: 1:56,250 Detail: 11-7 Datum: WGS84

Solutions
 Industrial & Environmental Services
 3722 BENSON DRIVE
 RALEIGH, NORTH CAROLINA 27609
 TEL.: (919) 873-1060 FAX.: (919) 873-1074

SITE LOCATION MAP
 CHARLIE HODGES STORE
 CAMDEN COUNTY, NC
 NCDOT STATE PROJECT
 8.T020401 (R-2414B)

FIGURE:
 1



MILDRED C. HARRELL
 DB 73, PG 537
 DB 18, PG 538A (MAP)

CHARLES H. HODGES, SR., ET AL
 DB 91, PG 43
 DB 25, PG 423

LAT. 'V' DITCH
 SEE DETAIL B

LEGEND

- APPROXIMATE EXTENT OF AFFECTED SOILS WITHIN PROPOSED CONSTRUCTION AREA
- BORING LOCATION

Solutions
 Industrial & Environmental Services
 3722 BENSON DRIVE
 RALEIGH, NORTH CAROLINA 27609
 TEL.: (919) 873-1060 FAX.: (919) 873-1074

5 0 10
 METRIC

APPROXIMATE EXTENT OF PETROLEUM IMPACTED SOILS
 CHARLIE HODGES' STORE
 CAMDEN COUNTY, NC
 NCDOT STATE PROJECT NO. 8.T020401(R-2414B)

FIGURE:
 3

PROJECT NUMBER 0870-01A3-NCDOT
 DRAFTER RLT
 CHECKED BY CZ
 PROJECT MANAGER WJB
 DATE OCTOBER, 2001
 FILE FIG-2.DGN