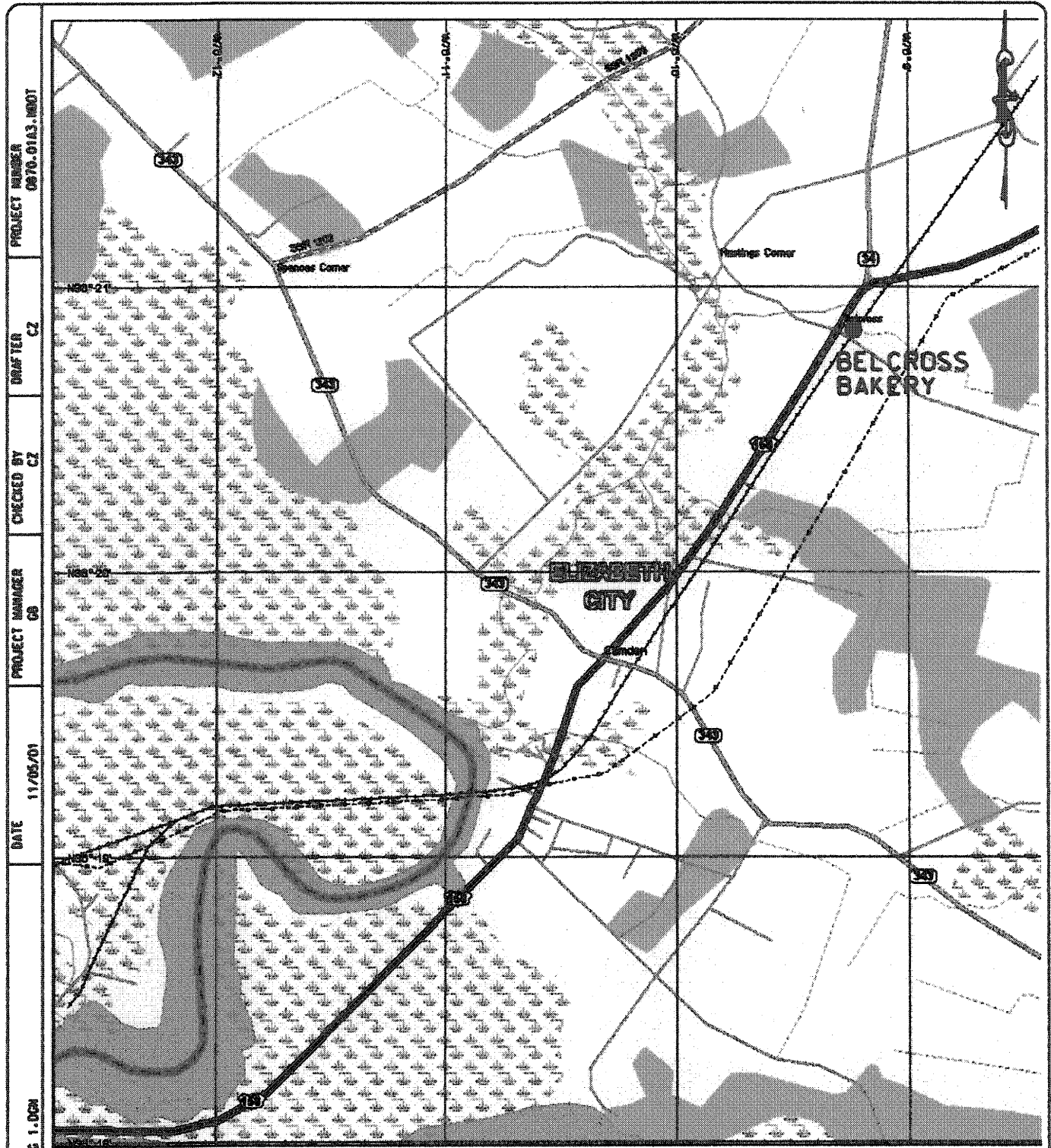


FIGURES



PROJECT NUMBER
0970.01A3.N00T

DRAFTER
CZ

CHECKED BY
CZ

PROJECT NUMBER
09

DATE
11/05/01

FIG 1.DGN

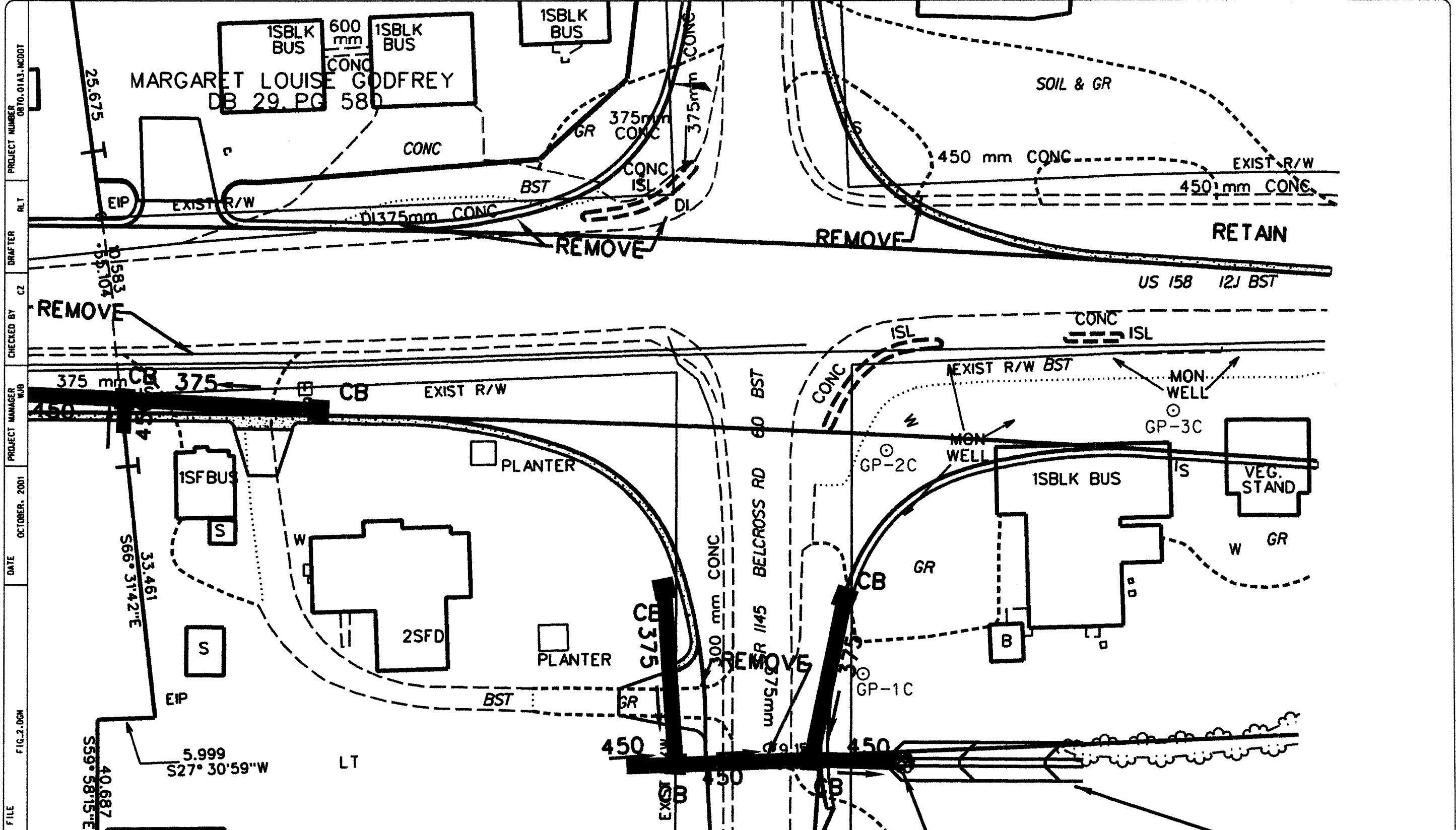
FILE

3-D TopoQuik Copyright © 1999 Delorme Yarnmouth, ME 04266 1000 ft Scale: 1:50,250 Detail: 11.7 Datum: WGS84

Solutions
Industrial & Environmental Services
3722 BENSON DRIVE
RALEIGH, NORTH CAROLINA 27609
TEL.: (919) 873-1060 FAX.: (919) 873-1074

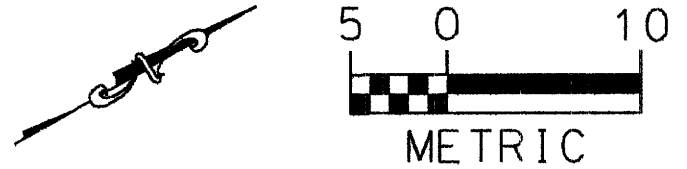
SITE LOCATION MAP
BELCROSS BAKERY
CAMDEN COUNTY, NC
NCDOT STATE PROJECT
8.T020401 (R-2414B)

FIGURE:
1



PROJECT NUMBER 8070.01A3.NC00T
 RL.T
 DRAFTER
 CHECKED BY CZ
 PROJECT MANAGER WJB
 DATE OCTOBER, 2001
 FILE FIG.2.DGN

Solutions
 Industrial & Environmental Services
 3722 BENSON DRIVE
 RALEIGH, NORTH CAROLINA 27609
 TEL.: (919) 873-1060 FAX.: (919) 873-1074



SAMPLE BORING LOCATIONS
 BELCROSS BAKERY
 CAMDEN COUNTY, NC
 NCDOT STATE PROJECT NO. 8.T020401(R-2414B)

FIGURE:
 2