



GENERAL NOTES

CHANGES MAY BE REQUIRED WHEN PHYSICAL DIMENSIONS IN THE DETAIL DRAWINGS, STANDARD DETAILS AND ROADWAY DETAILS ARE NOT ATTAINABLE TO MEET FIELD CONDITIONS, OR RESULT IN DUPLICATE, OR UNDESIRED OVERLAPPING OF DEVICES. MODIFICATION MAY INCLUDE: MOVING, SUPPLEMENTING, COVERING, OF REMOVAL OF DEVICES, AS DIRECTED BY THE ENGINEER.

THE FOLLOWING GENERAL NOTES APPLY AT ALL TIMES FOR THE DURATION OF THE CONSTRUCTION PROJECT EXCEPT WHEN OTHERWISE NOTED IN THE PLAN OR AS DIRECTED BY THE ENGINEER.

LANE AND SHOULDER CLOSURE REQUIREMENTS

- F) REMOVE LANE CLOSURE DEVICES FROM THE LANE WHEN WORK IS NOT BEING PERFORMED BEHIND THE LANE CLOSURE OR WHEN A LANE CLOSURE IS NO LONGER NEEDED, OR AS DIRECTED BY THE ENGINEER.
- G) WHEN PERSONNEL AND/OR EQUIPMENT ARE WORKING ON THE SHOULDER ADJACENT TO AN UNDIVIDED FACILITY AND WITHIN 5 FT OF AN OPEN TRAVEL LANE, CLOSE THE NEAREST OPEN TRAVEL LANE USING ROADWAY STANDARD DRAWING NO. 1101.02 UNLESS THE WORK AREA IS PROTECTED BY BARRIER OR GUARDRAIL.  
  
WHEN PERSONNEL AND/OR EQUIPMENT ARE WORKING ON THE SHOULDER ADJACENT TO A DIVIDED FACILITY AND WITHIN 10 FT OF AN OPEN TRAVEL LANE, CLOSE THE NEAREST OPEN TRAVEL LANE USING ROADWAY STANDARD DRAWING NO. 1101.02 UNLESS THE WORK AREA IS PROTECTED BY BARRIER OR GUARDRAIL.
- H) WHEN PERSONNEL AND/OR EQUIPMENT ARE WORKING WITHIN A LANE OF TRAVEL OF AN UNDIVIDED OR DIVIDED FACILITY, CLOSE THE LANE ACCORDING TO THE TRAFFIC CONTROL PLANS, ROADWAY STANDARD DRAWINGS OR AS DIRECTED BY THE ENGINEER. CONDUCT THE WORK SO THAT ALL PERSONNEL AND/OR EQUIPMENT REMAIN WITHIN THE CLOSED TRAVEL LANE.
- I) DO NOT WORK SIMULTANEOUSLY WITHIN 15 FT ON BOTH SIDES OF AN OPEN TRAVELWAY, RAMP OR LOOP WITHIN THE SAME LOCATION UNLESS PROTECTED WITH GUARDRAIL OR BARRIER.

PAVEMENT EDGE DROP OFF REQUIREMENTS

- A) BACKFILL AT A 6:1 SLOPE UP TO THE EDGE AND ELEVATION OF EXISTING PAVEMENT IN AREAS ADJACENT TO AN OPENED TRAVEL LANE THAT HAS A DROP-OFF AS FOLLOWS:  
  
BACKFILL DROP-OFFS THAT EXCEED 2 INCHES ON ROADWAYS WITH POSTED SPEED LIMITS OF 45 MPH OR GREATER.  
  
BACKFILL DROP-OFFS THAT EXCEED 3 INCHES ON ROADWAYS WITH POSTED SPEED LIMITS LESS THAN 45 MPH.  
  
BACKFILL WITH SUITABLE COMPACTED MATERIAL, AS APPROVED BY THE ENGINEER, AT NO EXPENSE TO THE DEPARTMENT

- B) DO NOT EXCEED A DIFFERENCE OF 2 INCHES IN ELEVATION BETWEEN OPEN LANES OF TRAFFIC FOR NOMINAL LIFTS OF 1.5 INCHES. INSTALL ADVANCE WARNING "UNEVEN LANES" SIGNS (W8-11) (200 FT) IN ADVANCE AND A MINIMUM OF ONCE EVERY HALF MILE THROUGHOUT THE UNEVEN AREA.

TRAFFIC PATTERN ALTERATIONS

- C) NOTIFY THE ENGINEER TWENTY ONE (21) CALENDAR DAYS PRIOR TO ANY TRAFFIC PATTERN ALTERATION.

SIGNING

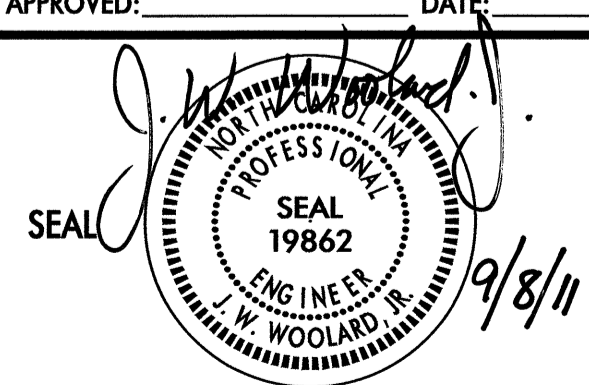
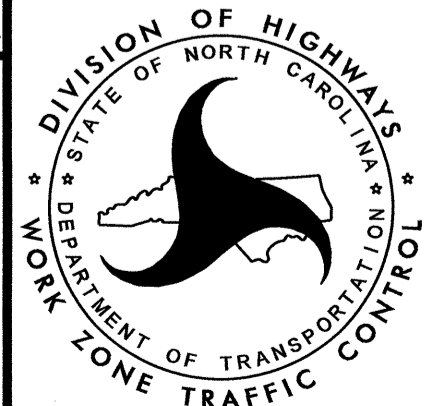
- E) PROVIDE SIGNING AND DEVICES REQUIRED TO CLOSE THE ROAD ACCORDING TO THE THE ROADWAY STANDARD DRAWINGS AND TRAFFIC CONTROL PLANS. PROVIDE SIGNING REQUIRED FOR THE OFF-SITE DETOUR AS SHOWN IN THE TRAFFIC CONTROL PLANS.
- F) COVER OR REMOVE ALL SIGNS AND DEVICES REQUIRED TO CLOSE THE ROAD WHEN ROAD CLOSURE IS NOT IN OPERATION. COVER OR REMOVE ALL SIGNS REQUIRED FOR THE OFF-SITE DETOUR WHEN THE DETOUR IS NOT IN OPERATION.
- G) ENSURE ALL NECESSARY SIGNING IS IN PLACE PRIOR TO ALTERING ANY TRAFFIC PATTERN.
- H) INSTALL BLACK ON ORANGE "DIP" SIGNS (W8-2) AND/OR "BUMP" SIGN (W8-1) 350 FT IN ADVANCE OF THE UNEVEN AREA, OR AS DIRECTED BY THE ENGINEER.

TRAFFIC CONTROL DEVICES

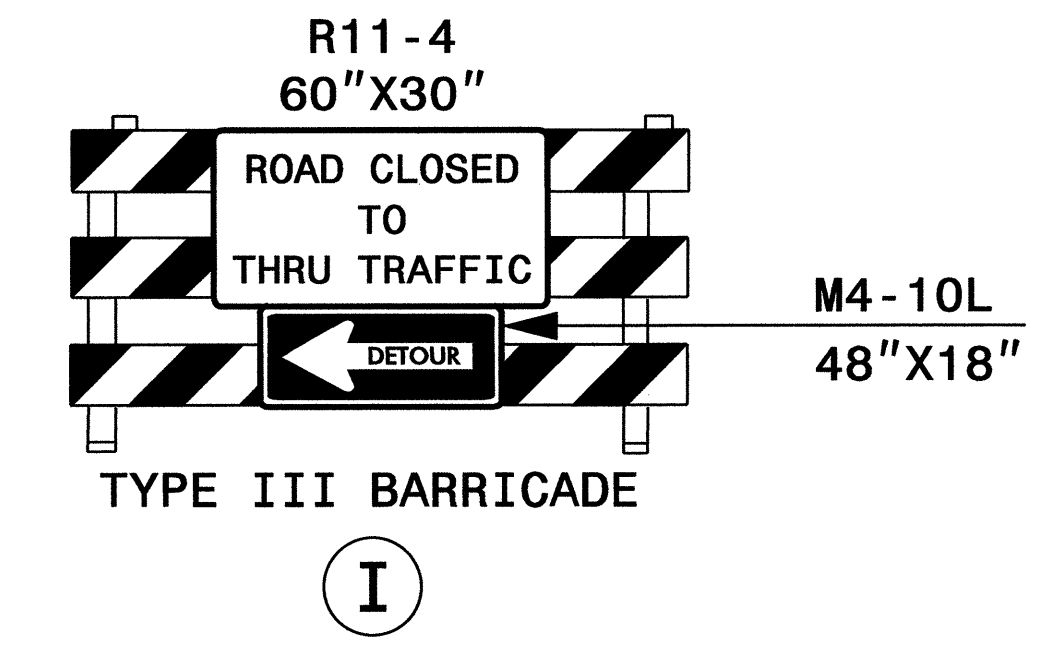
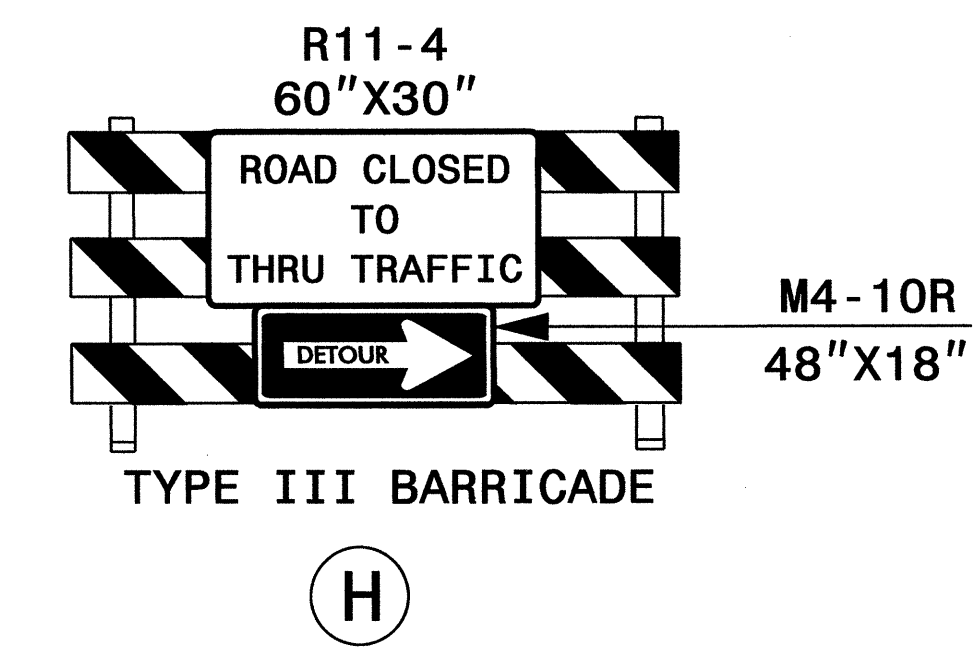
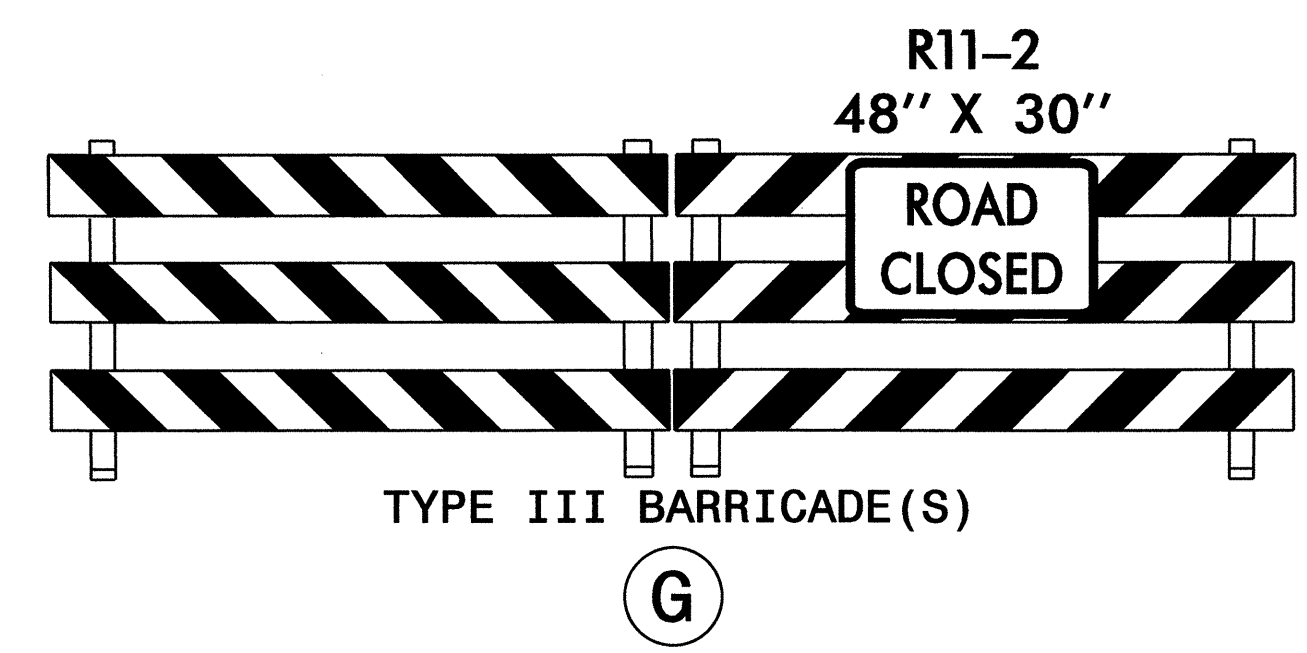
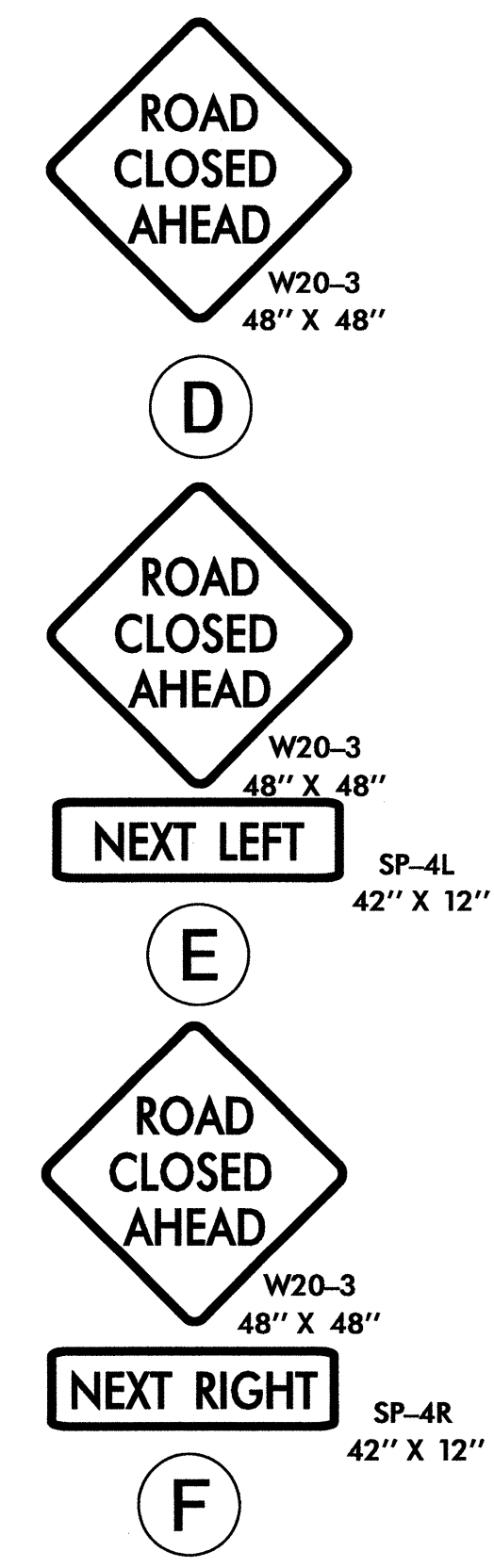
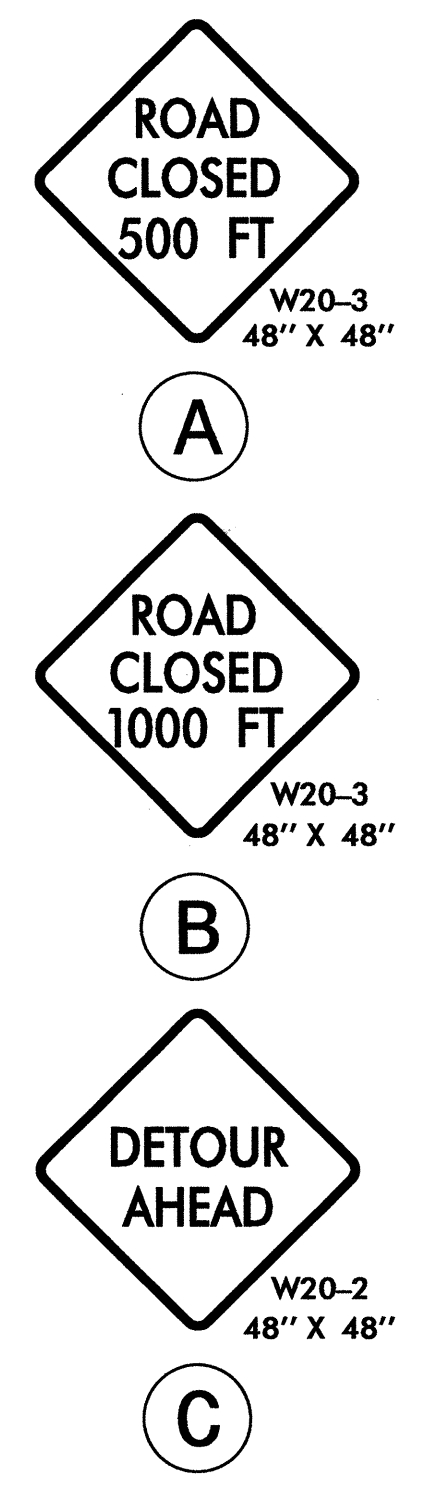
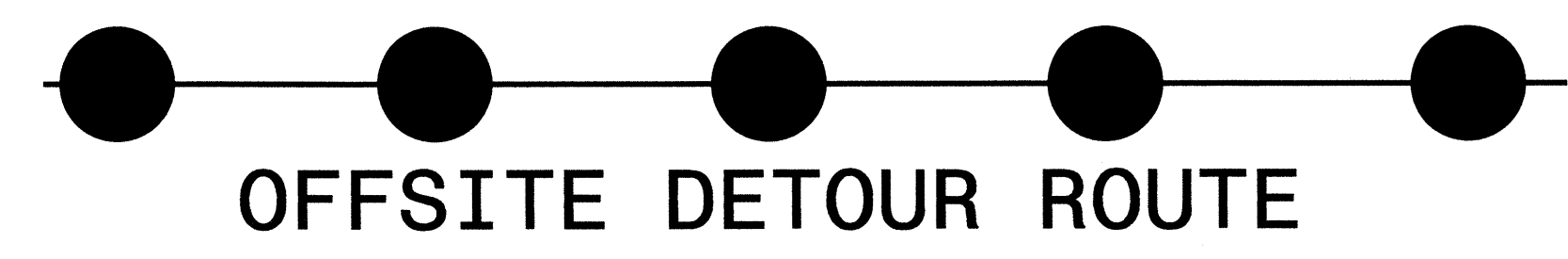
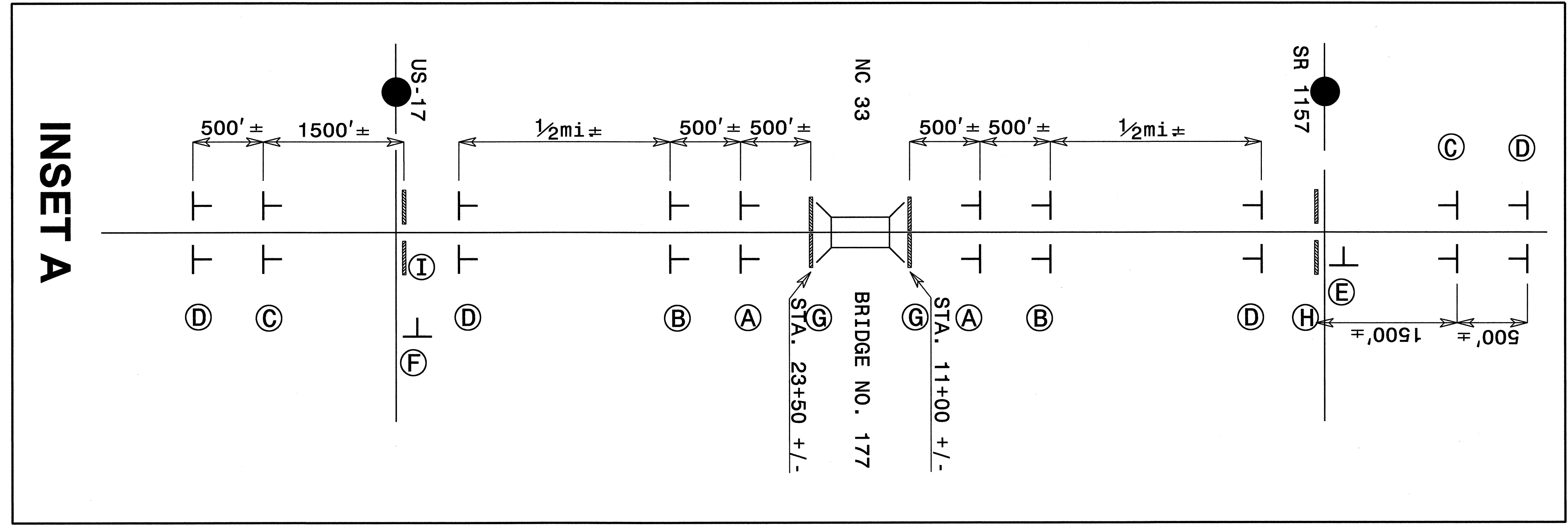
- I) PLACE TYPE III BARRICADES WITH "ROAD CLOSED" SIGN R-11-2 ATTACHED OF SUFFICIENT LENGTH TO CLOSE ENTIRE ROADWAY.

PHASING

- STEP 1: - USING FLAGGERS AND ROADWAY STANDARD DRAWING 1101.02 (SHEET 1 OF 9), RESURFACE DETOUR ROUTE AND PLACE FINAL PAVEMENT MARKINGS AND MARKERS (PAINT AND PERMANENT RAISED MARKERS) AS SHOWN IN THE CONSTRUCTION PLAN.
- STEP 2: - AFTER STATE FORCES INSTALL THE OFF-SITE DETOUR ON NC-33, USE ROADWAY STANDARD DRAWING NO. 1101.03, SHEET 1 OF 9, CLOSE NC-33 -L- TO THRU TRAFFIC AND SHIFT NC-33 -L- TRAFFIC ONTO OFF-SITE DETOUR. (SEE TMP-2)
- STEP 3: - REMOVE EXISTING STRUCTURE AND CONSTRUCT PROPOSED STRUCTURE AND ROADWAY, UP TO BUT NOT INCLUDING THE FINAL LAYER OF SURFACE COURSE FROM STA 11+00 +/- TO STA 23+50 +/- -L- (NC-33). PLACE TEMPORARY PAVEMENT MARKINGS IN THE FINAL PATTERN.  
  
- USING FLAGGERS AND ROADWAY STANDARD DRAWING 1101.02 (SHEET 1 OF 9), CONSTRUCT THE FOLLOWING UP TO BUT NOT INCLUDING THE FINAL LAYER OF SURFACE COURSE AND PLACE TEMPORARY PAVEMENT MARKINGS IN THE FINAL PATTERN:  
  - L- FROM STA. 9+00 +/- TO STA. 11+00 +/- AND STA 23+50 +/- TO STA. 25+00 +/-
  - Y1- FROM STA. 11+00 +/- TO STA. 13+85 +/-
  - Y2- FROM STA. 10+15 +/- TO STA. 12+35 +/-
  - Y3- FROM STA. 10+00 +/- TO STA. 10+50 +/-
  - Y4- FROM STA. 10+40 +/- TO STA. 12+50 +/-
  - Y5- FROM STA. 10+25 +/- TO STA. 11+00 +/-
  - DR1- FROM STA. 10+40 +/- TO STA. 12+00 +/-
- NOTE: MAINTAIN ACCESS TO ALL DRIVEWAYS DURING CONSTRUCTION.
- STEP 4: - OPEN -L- TO FINAL PATTERN FROM STA. 11+00 TO STA 23+50.
- STEP 5: - USING FLAGGERS AND ROADWAY STANDARD DRAWING 1101.02(SHEET 1 OF 9), PLACE FINAL LAYER OF SURFACE COURSE & PAVEMENT MARKINGS ON -L-, -Y1-, -Y2-, -Y3-, -Y4-, -Y5- AND DR1.
- STEP 6: - REMOVE ALL TRAFFIC CONTROL DEVICES, SIGNING AND DETOUR ROUTE SIGNING.  
  
- OPEN ALL ROADS TO FINAL TRAFFIC PATTERN.

APPROVED: 	DATE: 9/8/11		GENERAL NOTES AND PHASING

07-SEP-2011 10:48  
\\dot\dfsroot\01\pfc\TIPProjects\B4416\TrafficControl\TCP\B-4416-rc.tmp.dgn  
msishok AT TE244732



OFFSITE DETOUR ROUTE

**NOTES**

- ALL SIGN LOCATIONS ARE APPROXIMATE.
- ALL DETOUR SIGNS ARE BLACK ON ORANGE UNLESS OTHERWISE NOTED.
- \* SEE ROADWAY STANDARD DRAWING NO. 1101.03, SHEET 1 OF 9, FOR ADDITIONAL WORK ZONE SIGNS AND LOCATIONS ON NC 33.

APPROVED: _____ DATE: _____	<b>ROAD CLOSURE DETAIL</b>					
			<table border="1"> <tr> <td>SCALE: NONE</td> <td rowspan="4" style="text-align: center;"> </td> </tr> <tr> <td>DATE: 5/29/09</td> </tr> <tr> <td>DESIGN BY: MI</td> </tr> <tr> <td>REVIEWED BY: JWW</td> </tr> </table>	SCALE: NONE		DATE: 5/29/09
SCALE: NONE						
DATE: 5/29/09						
DESIGN BY: MI						
REVIEWED BY: JWW						
	<table border="1"> <tr> <td>REVISIONS</td> </tr> <tr> <td> </td> </tr> <tr> <td> </td> </tr> <tr> <td> </td> </tr> </table>	REVISIONS				
REVISIONS						

03-AUG-2011 09:17  
 \\DOT\DFSROOT\PROJ\TIPProjects-B\B4416\TrafficControl\TCP\B-4416.tc\_tcp.02.dgn  
 Jwoolard AT TE244740