

09/08/99

T.I.P. NO.	SHEET NO.
B-3924	UO-1

STATE OF NORTH CAROLINA  
DIVISION OF HIGHWAYS

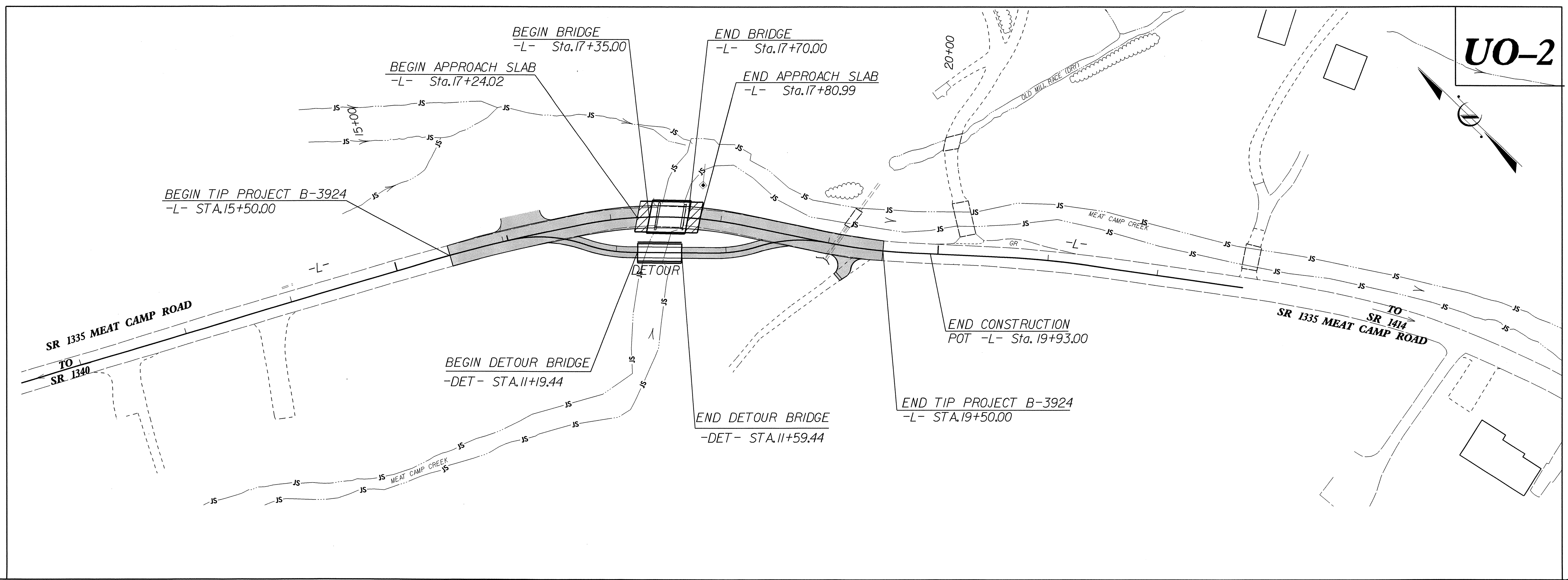
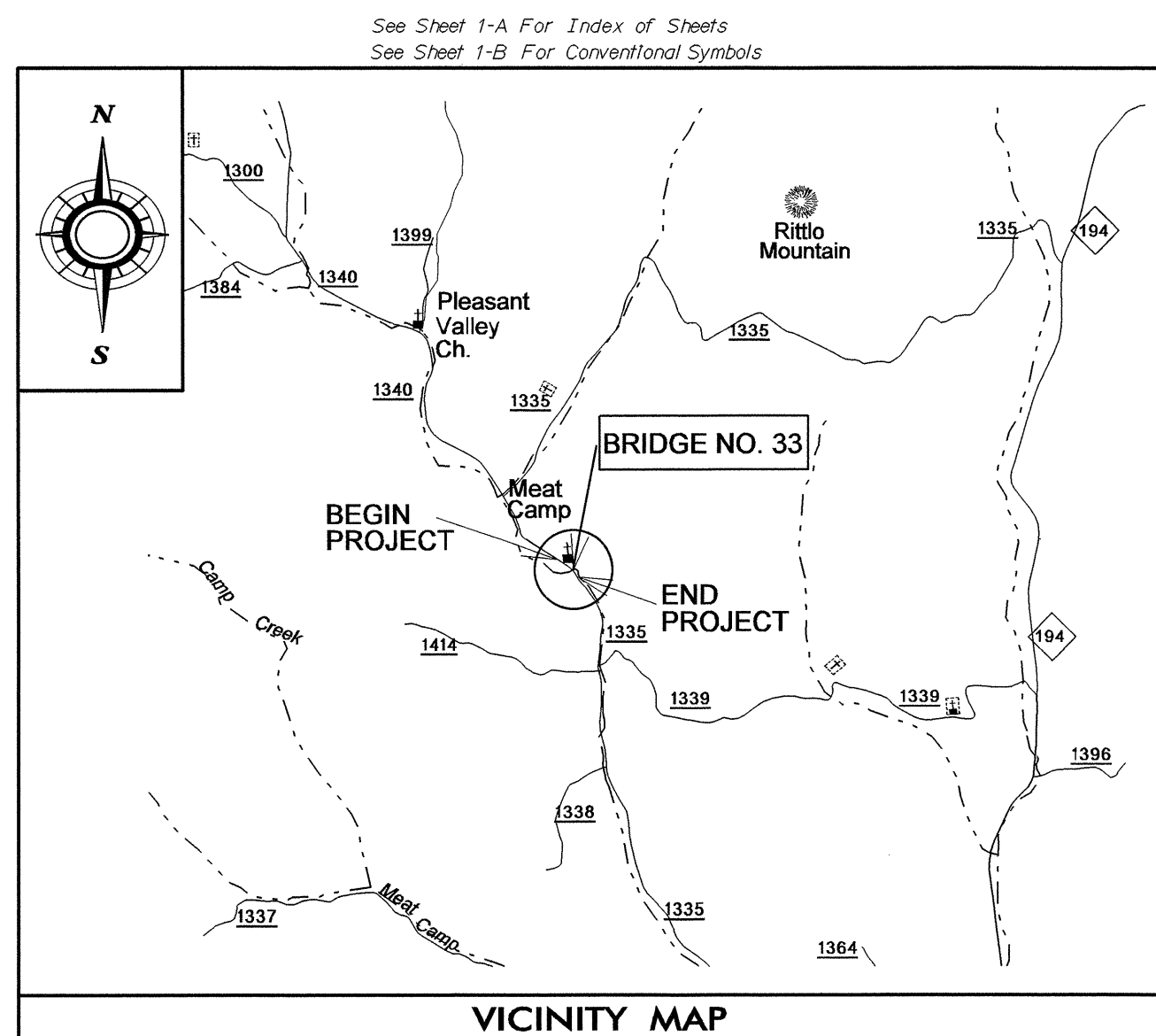
**UTILITIES BY OTHERS PLANS  
WATAUGA COUNTY**

**LOCATION: BRIDGE NO. 33 OVER MEAT CAMP CREEK  
ON SR 1335 (MEAT CAMP ROAD)**

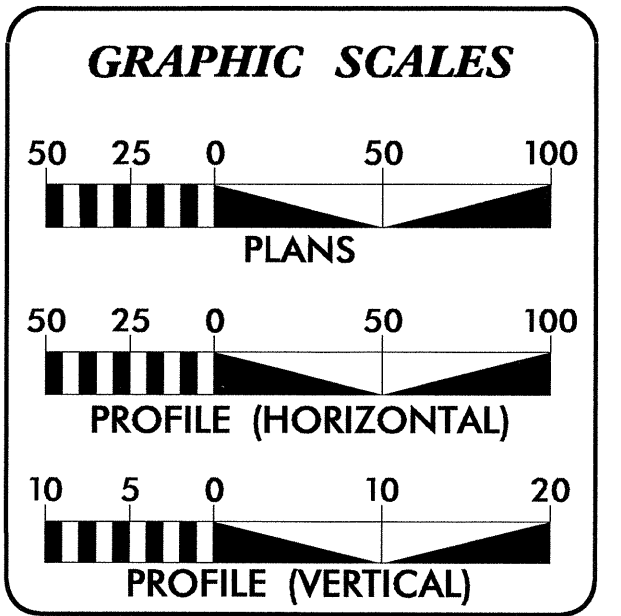
**TYPE OF WORK: POWER, TELEPHONE AND CABLE TV RELOCATION**

**TIP PROJECT: B-3924**

**CONTRACT:**



**UO-2**



INDEX OF SHEETS	
SHEET NO.	DESCRIPTION
UO-1	TITLE SHEET
UO-2	UTILITY BY OTHERS PLAN SHEET

UTILITY OWNERS ON PROJECT
(1) AT&T
(2) BLUE RIDGE EMC
(3) CHARTER CABLE

PREPARED IN THE OFFICE OF:  
**DIVISION OF HIGHWAYS  
UTILITIES ENGINEERING  
SECTION**

1591 MAIL SERVICES CENTER  
RALEIGH NC 27699-1591  
PHONE (919) 250-4128  
FAX (919) 250-4119

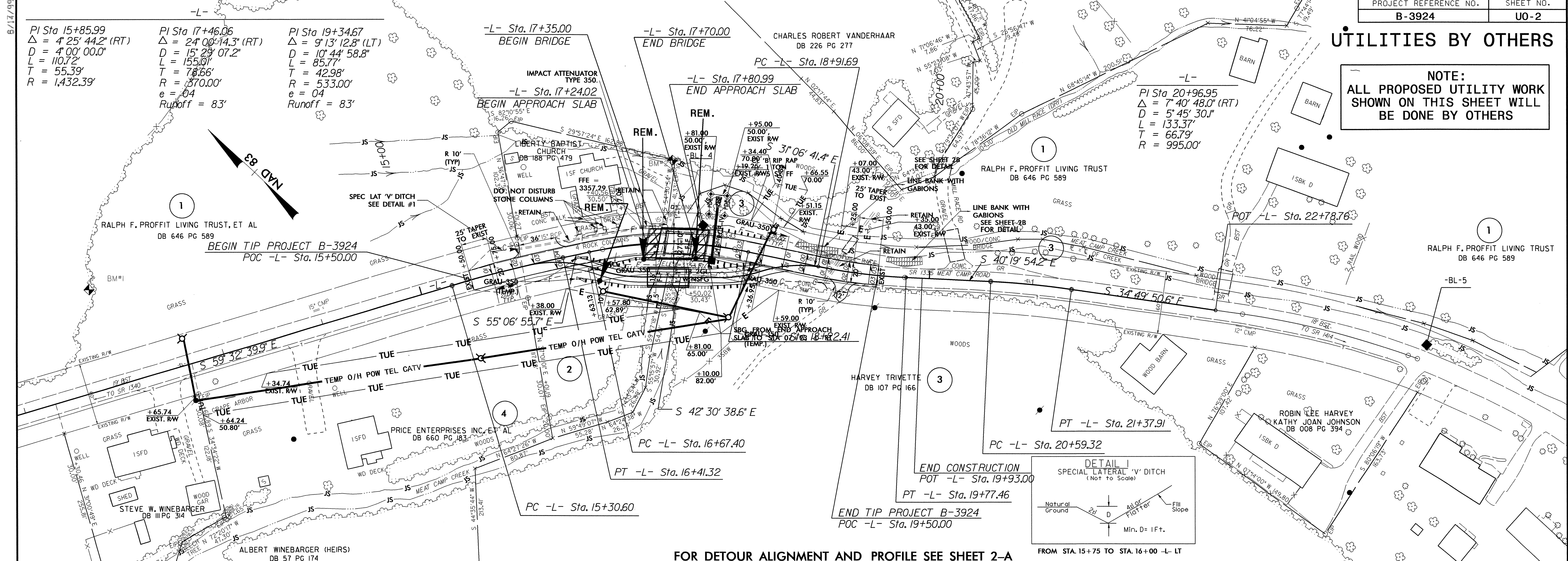
**Roger Worthington, P.E.** UTILITIES SECTION ENGINEER  
**Carl Barclay, P.E.** UTILITIES SQUAD LEADER PROJECT ENGINEER  
**Ali Kouchehi, P.E.** UTILITIES PROJECT DESIGNER

06-JUN-2011 14:52  
P:\JH\114515\3924\_UH\Proj\B3924\_rdy\_tsh.dgn  
\$\$\$\$USERNAME\$\$\$\$



**UTILITIES BY OTHERS**

**NOTE:**  
ALL PROPOSED UTILITY WORK SHOWN ON THIS SHEET WILL BE DONE BY OTHERS

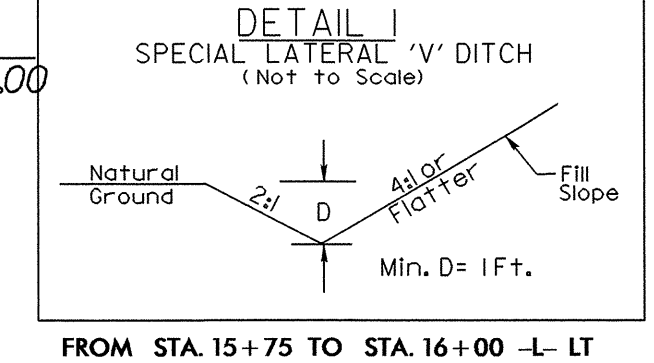


PI Sta 15+85.99  
Δ = 4° 25' 44.2" (RT)  
D = 4' 00' 00.0"  
L = 110.72'  
T = 55.39'  
R = 1,432.39'

PI Sta 17+46.06  
Δ = 24° 00' 14.3" (RT)  
D = 15' 29' 07.2"  
L = 155.01'  
T = 78.66'  
R = 370.00'  
e = 04  
Runoff = 83'

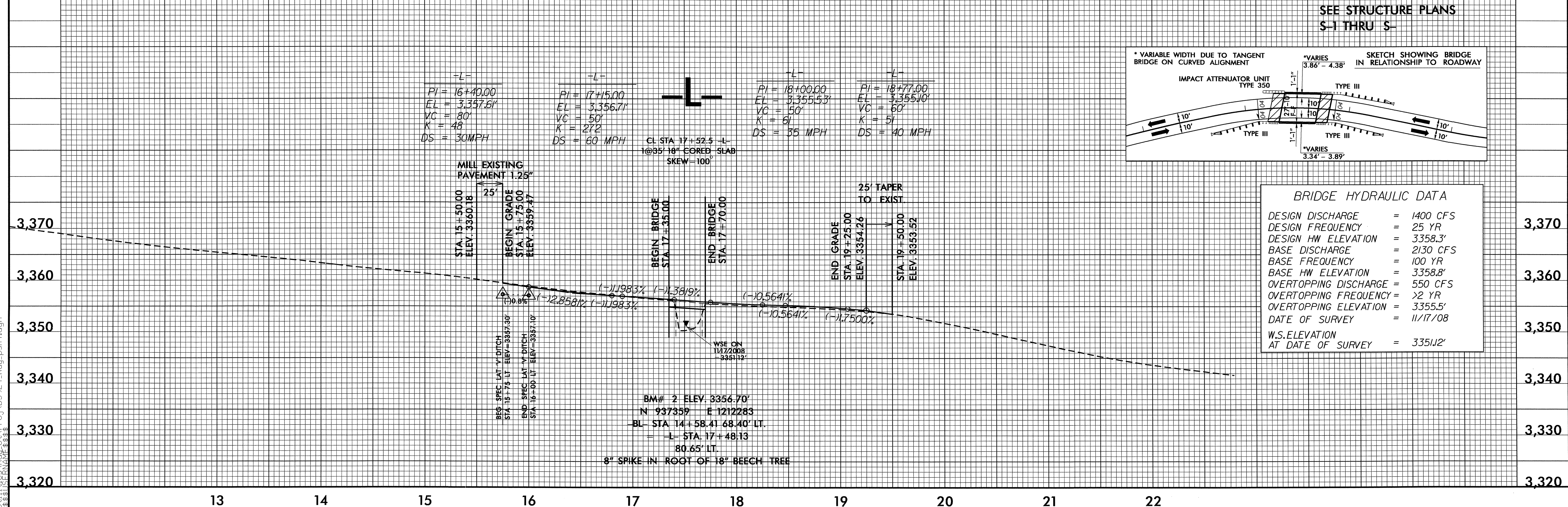
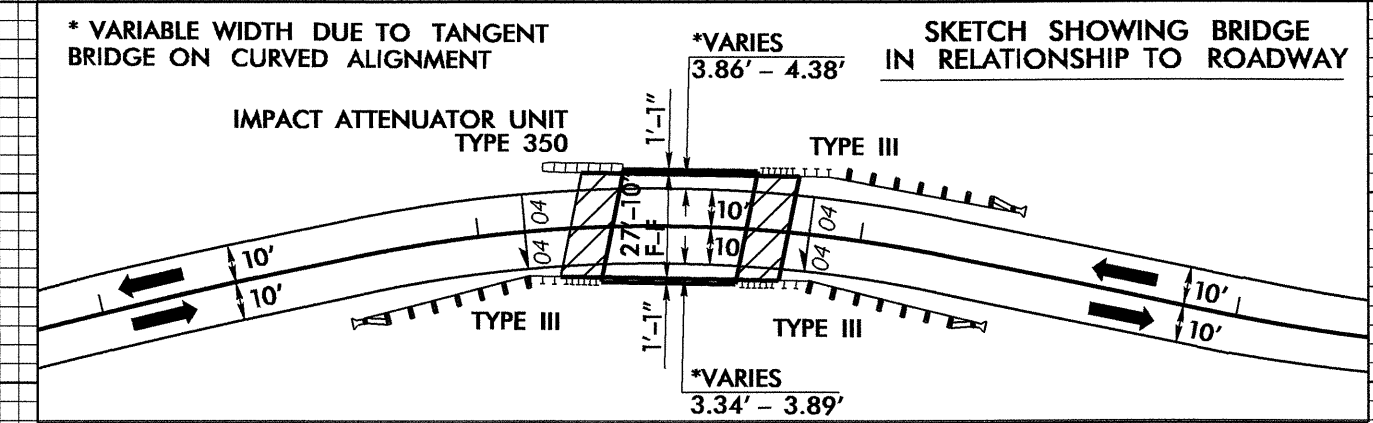
PI Sta 19+34.67  
Δ = 9° 13' 12.8" (LT)  
D = 10' 44' 58.8"  
L = 85.77'  
T = 42.98'  
R = 533.00'  
e = 04  
Runoff = 83'

PI Sta 20+96.95  
Δ = 7° 40' 48.0" (RT)  
D = 5' 45' 30.1"  
L = 133.37'  
T = 66.79'  
R = 995.00'



FOR DETOUR ALIGNMENT AND PROFILE SEE SHEET 2-A

**SEE STRUCTURE PLANS S-1 THRU S-**



**BRIDGE HYDRAULIC DATA**

DESIGN DISCHARGE	= 1400 CFS
DESIGN FREQUENCY	= 25 YR
DESIGN HW ELEVATION	= 3358.3'
BASE DISCHARGE	= 2130 CFS
BASE FREQUENCY	= 100 YR
BASE HW ELEVATION	= 3358.8'
OVERTOPPING DISCHARGE	= 550 CFS
OVERTOPPING FREQUENCY	= >2 YR
OVERTOPPING ELEVATION	= 3355.5'
DATE OF SURVEY	= 11/17/08
W.S. ELEVATION AT DATE OF SURVEY	= 3351.2'

REVISIONS

06-JUN-2011 14:43 P:\U01\B3924\B3924-Fddj-psb4.dgn