

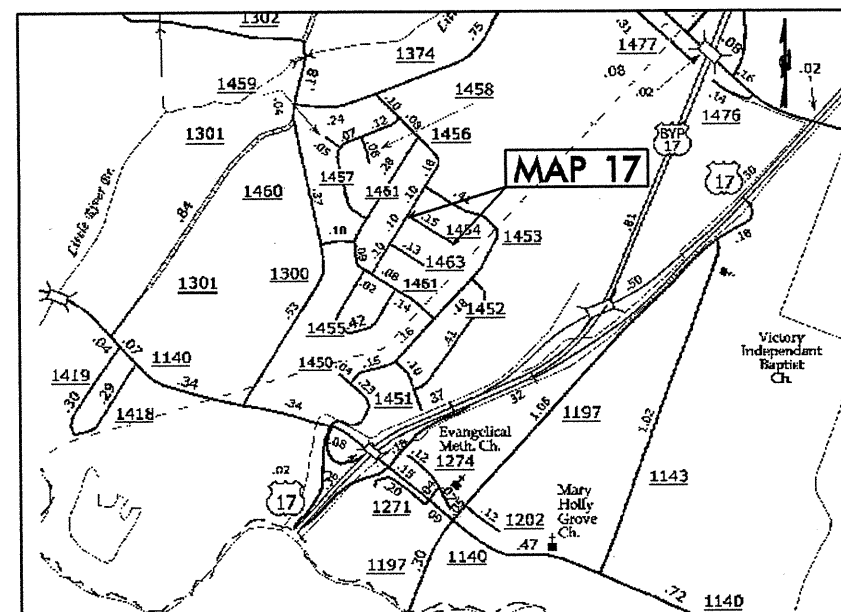
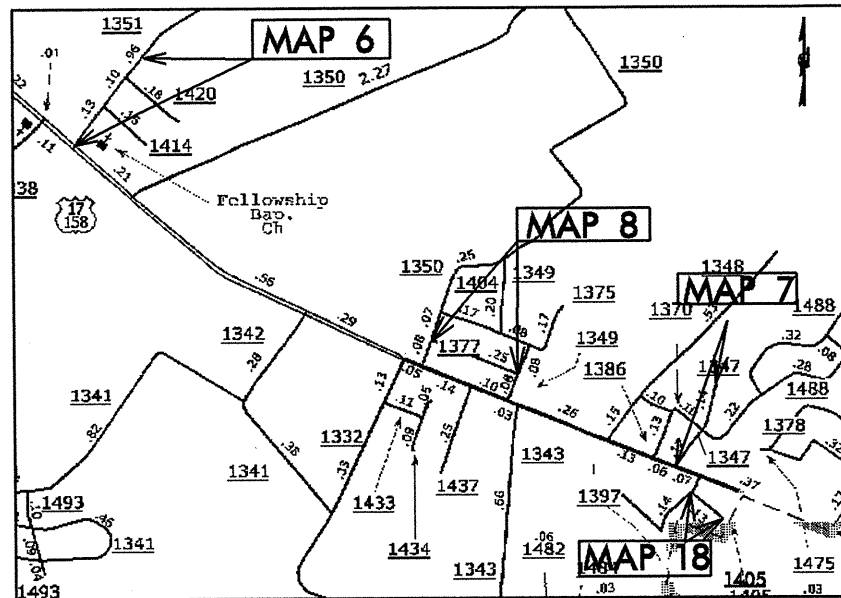
WBS ELEMENT: IC.070039, ETC.

CONTRACT NO.: C202938

STATE OF NORTH CAROLINA  
DIVISION OF HIGHWAYS

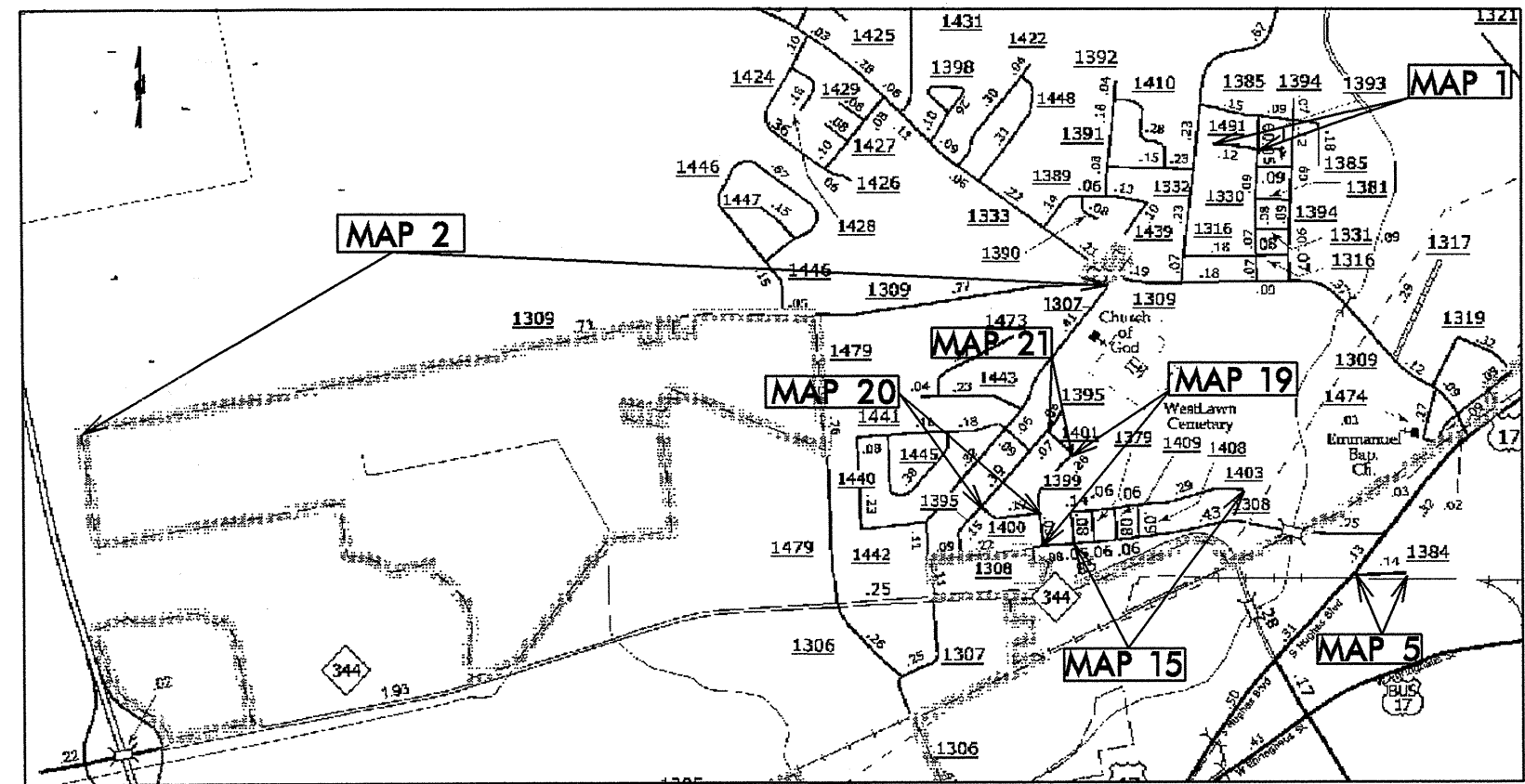
**PASQUOTANK COUNTY**

STATE	STATE PROJECT REFERENCE NO.	SHEET NO.	TOTAL SHEETS
N.C.	1C.070039, ETC.	1	8
STATE PROJ. NO.	P.A. PROJ. NO.	DESCRIPTION	
1C.070039		MAP 1	
1CR.20701.57		MAP 2	
1CR.20701.60		MAP 5	
1CR.20701.61		MAP 6	
1CR.20701.62		MAP 7	
1CR.20701.63		MAP 8	
1CR.20701.70		MAP 15	
1CR.20701.72		MAP 17	
1CR.20701.73		MAP 18	
1CR.20701.74		MAP 19	
1CR.20701.75		MAP 20	
1CR.20701.76		MAP 21	



- LOCATION:**
- MAP 1 SR 1491 FROM SR 1330 TO DEAD END
  - MAP 2 SR 1309 FROM SR 1307 TO DEAD END
  - MAP 5 SR 1384 FROM US 17 TO END MAINTENANCE
  - MAP 6 SR 1351 FROM US 17 TO PAVEMENT CHANGE
  - MAP 7 SR 1347 FROM US 17 TO DEAD END
  - MAP 8 SR 1377 FROM SR 1350 TO SR 1349
  - MAP 15 SR 1403 FROM SR 1308 TO END OF PAVEMENT
  - MAP 17 SR 1454 FROM SR 1456 TO DEAD END
  - MAP 18 SR 1405 FROM SR 1397 TO DEAD END
  - MAP 19 SR 1399 FROM SR 1308 TO SR 1401
  - MAP 20 SR 1400 FROM SR 1395 TO SR 1399
  - MAP 21 SR 1401 FROM SR 1399 TO SR 1395

**TYPE OF WORK: RESURFACING & PAVEMENT MARKINGS**



**NTS**

PROJECT LENGTH	
LENGTH OF ROADWAY PROJECT	MAP 1 0.12 MI.
LENGTH OF ROADWAY PROJECT	MAP 2 1.56 MI.
LENGTH OF ROADWAY PROJECT	MAP 5 0.14 MI.
LENGTH OF ROADWAY PROJECT	MAP 6 0.30 MI.
LENGTH OF ROADWAY PROJECT	MAP 7 0.26 MI.
LENGTH OF ROADWAY PROJECT	MAP 8 0.24 MI.
LENGTH OF ROADWAY PROJECT	MAP 15 0.54 MI.
LENGTH OF ROADWAY PROJECT	MAP 17 0.16 MI.
LENGTH OF ROADWAY PROJECT	MAP 18 0.13 MI.
LENGTH OF ROADWAY PROJECT	MAP 19 0.27 MI.
LENGTH OF ROADWAY PROJECT	MAP 20 0.16 MI.
LENGTH OF ROADWAY PROJECT	MAP 21 0.09 MI.

Prepared In the Office of:  
**DIVISION OF HIGHWAYS**  
113 Airport Dr., Edenton NC, 27932

---

2012 STANDARD SPECIFICATIONS

**LETTING DATE:**  
FEBRUARY 21, 2012

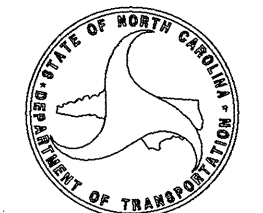
---

**W.B. HOBBS, P.E.**  
DIVISION PROJECT MANAGER

---

**C.E. SLACHTA**  
DIVISION PROPOSALS ENGINEER

**DIVISION OF HIGHWAYS**  
STATE OF NORTH CAROLINA





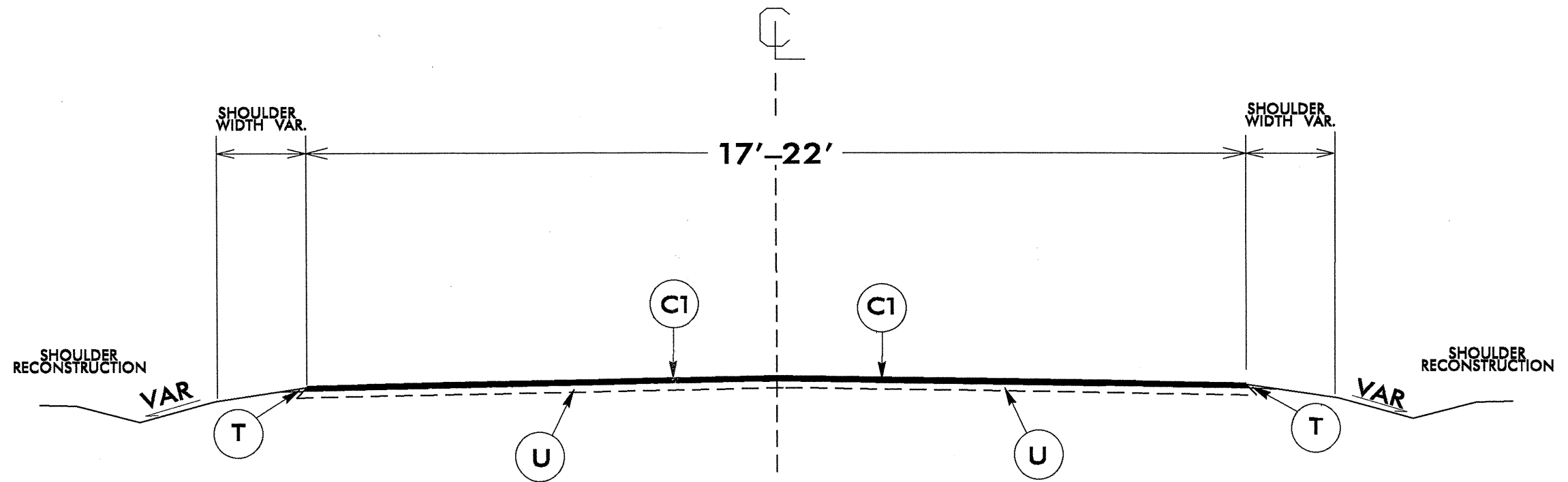
PAVEMENT SCHEDULE

C1	PROP. APPROX. 1½" ASPHALT CONCRETE SURFACE COURSE, TYPE SF9.5A, AT AN AVERAGE RATE OF 165 LBS. PER SQ. YD.
T	EARTH MATERIAL
U	EXISTING PAVEMENT.

PROJECT REFERENCE NO. 1C.070039, ETC	SHEET NO. 3
---	----------------

NOTES:

- \*ALL PAVED S.R. ROADS TO BE RESURFACED TO THE ENDS OF THE RADI., OR AS DIRECTED BY THE ENGINEER
- \*EDGES, PAVEMENT WIDENING, INTERSECTIONS, AND BRIDGE FLARES ARE INCLUDED IN THE TABLE OF QUANTITIES
- \*PAVEMENT EDGE SLOPES ARE 1:1 UNLESS SHOWN OTHERWISE



TYPICAL SECTION NO.1

USE WITH MAP 2-21

NTS

PAVEMENT SCHEDULE

C1	PROP. APPROX. 1½" ASPHALT CONCRETE SURFACE COURSE, TYPE SF9.5A, AT AN AVERAGE RATE OF 165 LBS. PER SQ. YD.
T	EARTH MATERIAL
J	EXISTING AGGREGATE BASE COURSE
P	PRIME COAT AT THE RATE OF .35 GAL. PER SQ. YARD

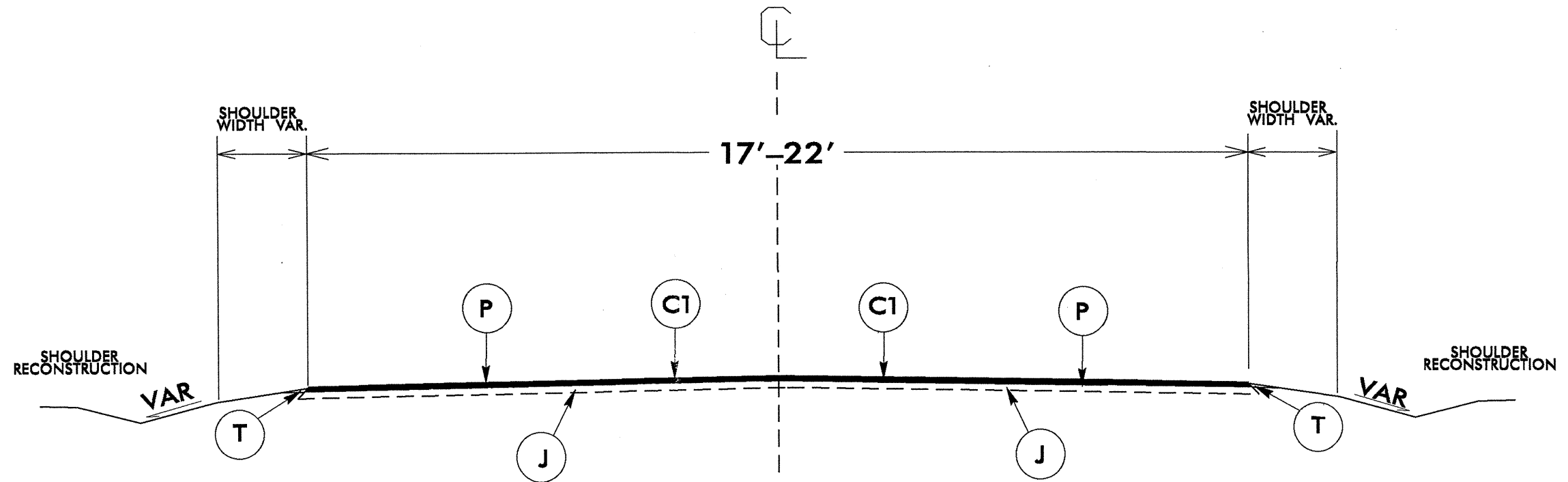
PROJECT REFERENCE NO. 1C.070039, ETC	SHEET NO. 4
---	----------------

NOTES:

\*ALL PAVED S.R. ROADS TO BE RESURFACED TO THE ENDS OF THE RADI., OR AS DIRECTED BY THE ENGINEER

\*EDGES, PAVEMENT WIDENING, INTERSECTIONS, AND BRIDGE FLARES ARE INCLUDED IN THE TABLE OF QUANTITIES

\*PAVEMENT EDGE SLOPES ARE 1:1 UNLESS SHOWN OTHERWISE



TYPICAL SECTION NO.2

USE WITH MAP 1

NTS

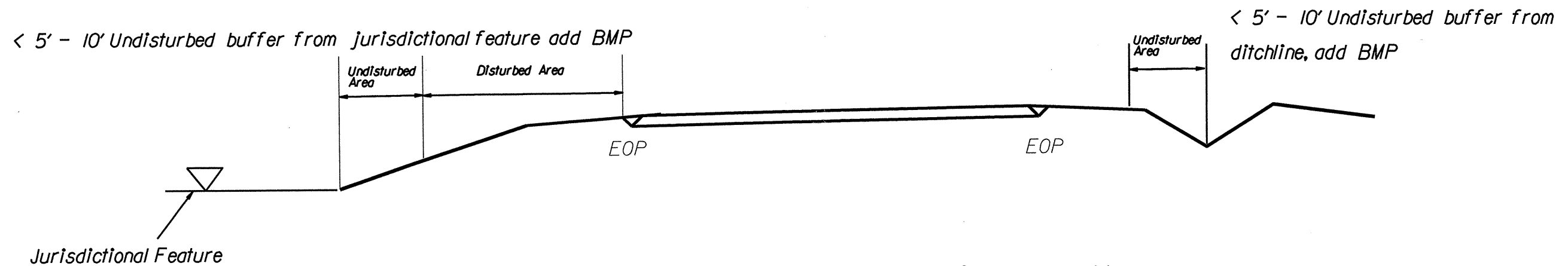
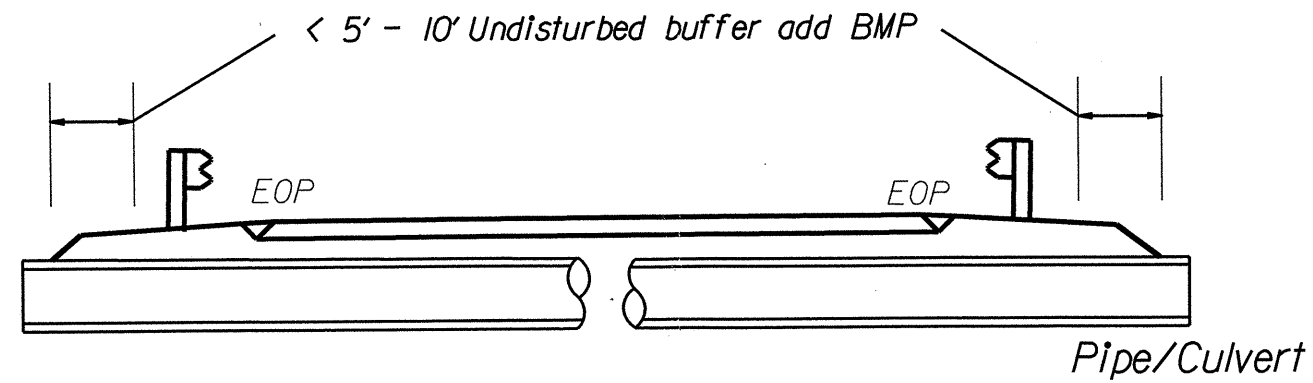
22-DEC-2011 14:18:53 \\spsquodank\New Files\1C.070039, ETC, Title & Typical.dgn

PROJECT REFERENCE NO.	SHEET NO.
1C.070039.572	5
RW SHEET NO.	
ROADWAY DESIGN ENGINEER	HYDRAULICS ENGINEER

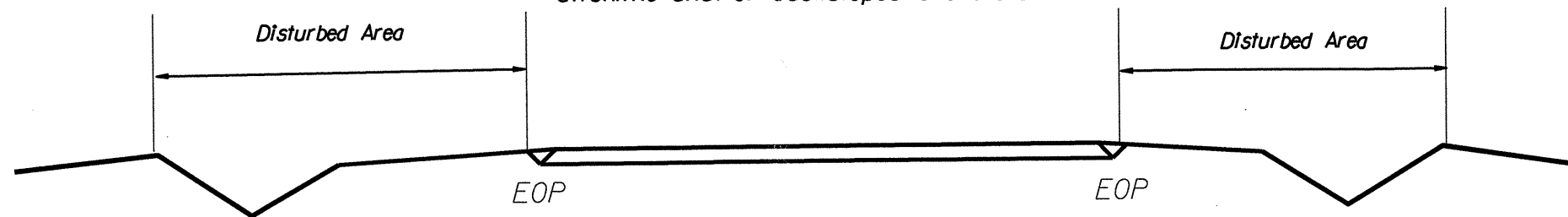
NOTES: Less than 5' - 10' undisturbed buffer from ROW, ditchline, water feature, or drainage inlet, add BMP.

BMP Options: Wattle or Silt Fence

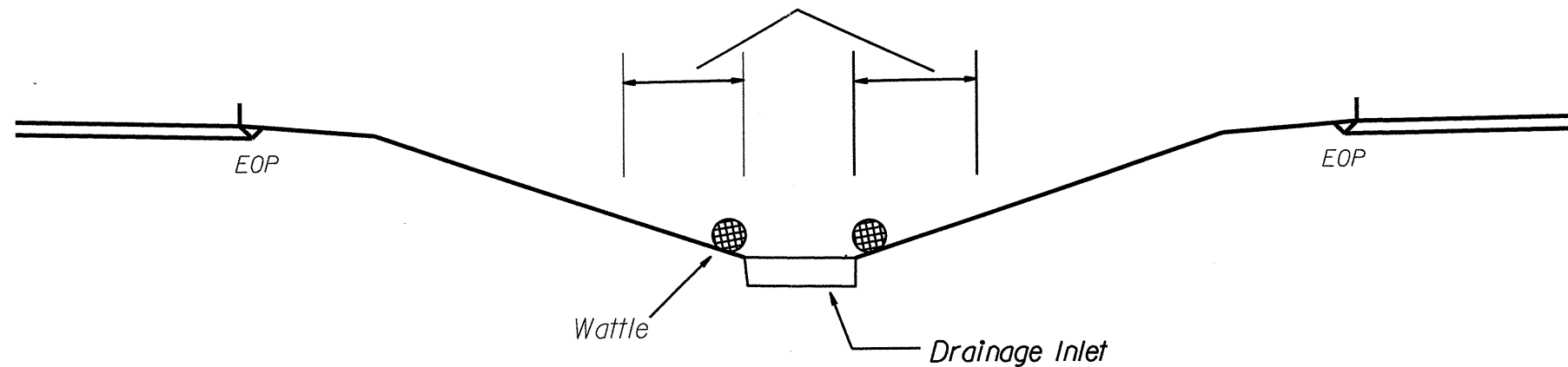
# EROSION CONTROL DETAIL



Use BMP's if shoulders and/or frontslopes and/or ditchline and/or backslopes are disturbed



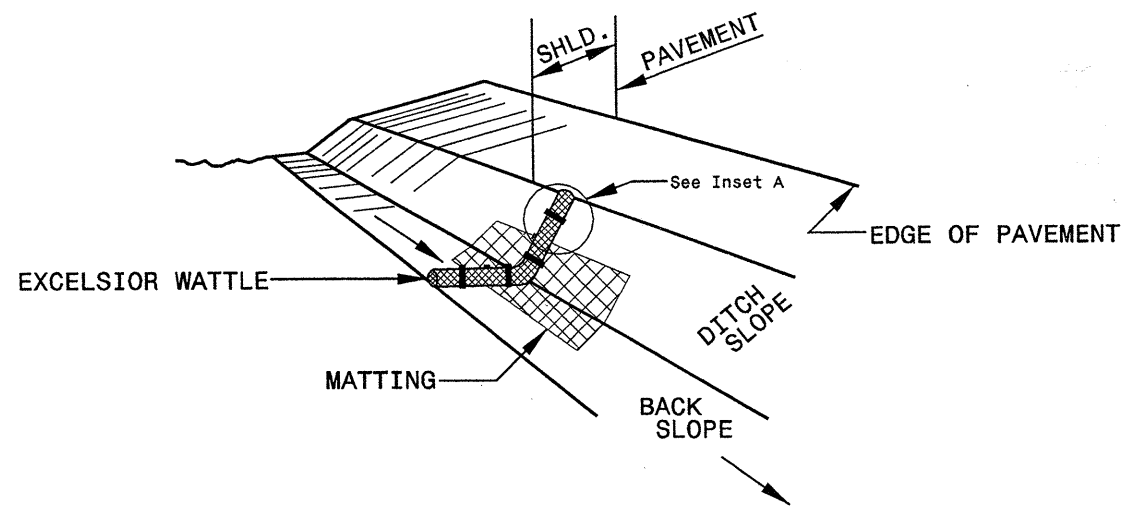
< 5' - 10' Undisturbed buffer from inlet, add wattle



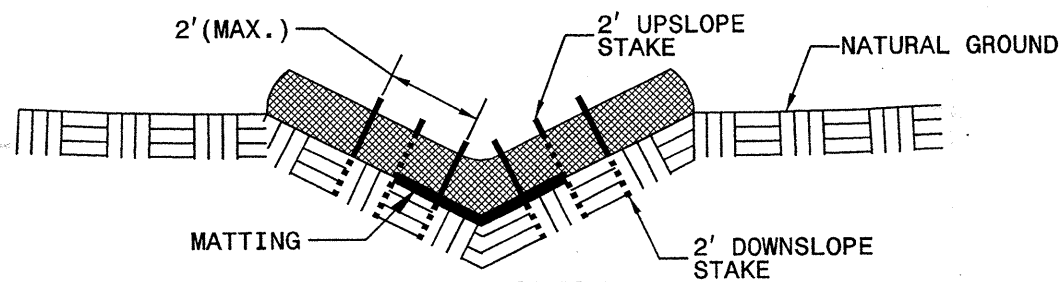
NOT TO SCALE

PROJECT REFERENCE NO. <b>1C.070039.ERL</b>	SHEET NO. <b>6</b>
RW SHEET NO.	
ROADWAY DESIGN ENGINEER	HYDRAULICS ENGINEER

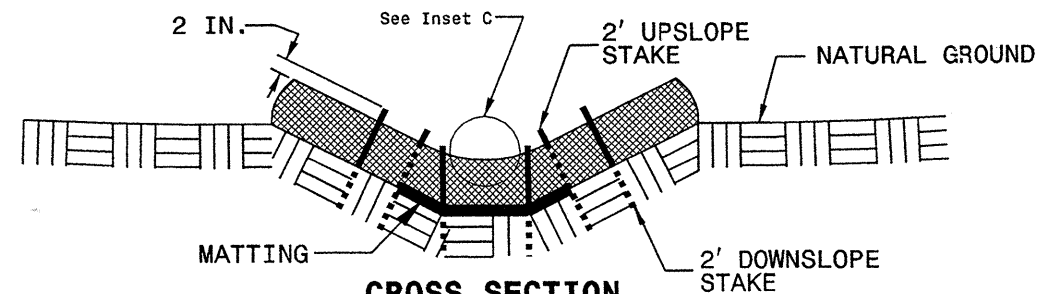
# WATTLE WITH POLYACRYLAMIDE (PAM) DETAIL



**ISOMETRIC VIEW**



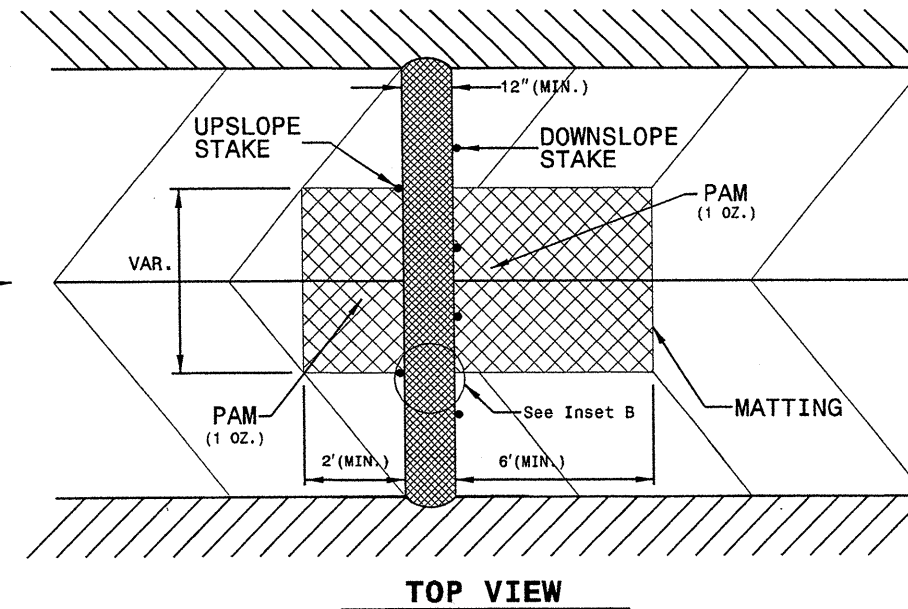
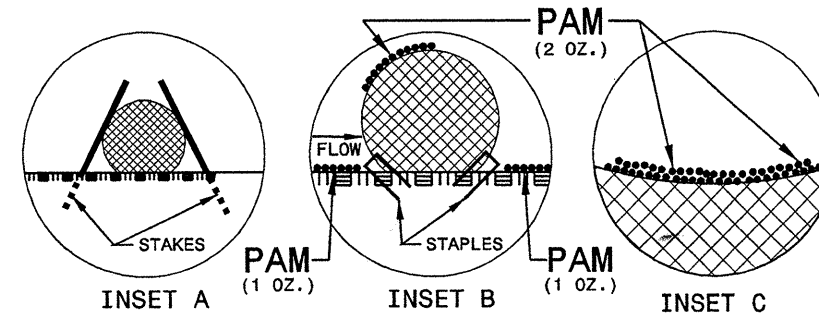
**CROSS SECTION VEE DITCH**



**CROSS SECTION TRAPEZOIDAL DITCH**

**NOTES:**

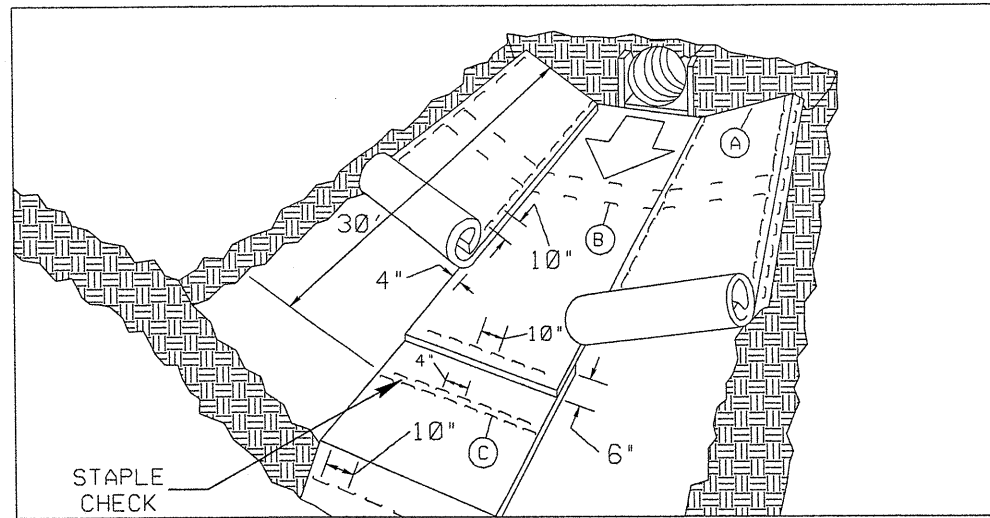
- USE MINIMUM 12 IN. DIAMETER EXCELSIOR WATTLE.
- USE 2 FT. WOODEN STAKES WITH A 2 IN. BY 2 IN. NOMINAL CROSS SECTION.
- ONLY INSTALL WATTLE(S) TO A HEIGHT IN DITCH SO FLOW WILL NOT WASH AROUND WATTLE AND SCOUR DITCH SLOPES AND AS DIRECTED.
- INSTALL A MINIMUM OF 2 UPSLOPE STAKES AND 4 DOWNSLOPE STAKES AT AN ANGLE TO WEDGE WATTLE TO BOTTOM OF DITCH.
- PROVIDE STAPLES MADE OF 0.125 IN. DIAMETER STEEL WIRE FORMED INTO A U SHAPE NOT LESS THAN 12" IN LENGTH.
- INSTALL STAPLES APPROXIMATELY EVERY 1 LINEAR FOOT ON BOTH SIDES OF WATTLE AND AT EACH END TO SECURE IT TO THE SOIL.
- INSTALL MATTING IN ACCORDANCE WITH SECTION 1631 OF THE STANDARD SPECIFICATIONS.
- PRIOR TO POLYACRYLAMIDE (PAM) APPLICATION, OBTAIN A SOIL SAMPLE FROM PROJECT LOCATION, AND FROM OFFSITE MATERIAL, AND ANALYZE FOR APPROPRIATE PAM FLOCCULANT TO BE APPLIED TO EACH WATTLE.
- INITIALLY APPLY 2 OUNCES OF ANIONIC OR NEUTRALLY CHARGED PAM OVER WATTLE WHERE WATER WILL FLOW AND 1 OUNCE OF PAM ON MATTING ON EACH SIDE OF WATTLE. REAPPLY PAM AFTER EVERY RAINFALL EVENT THAT IS EQUAL TO OR EXCEEDS 0.50 IN.



**TOP VIEW**

PROJECT REFERENCE NO. <b>IC.070039, ETL</b>	SHEET NO. <b>7</b>
DW SHEET NO.	
ROADWAY DESIGN ENGINEER	HYDRAULICS ENGINEER

# MATTING INSTALLATION DETAIL



**MATTING IN DITCHES**

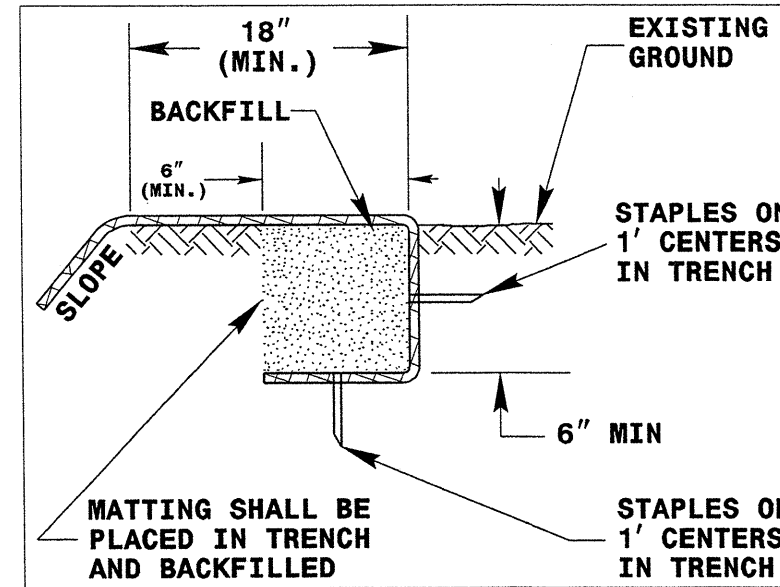
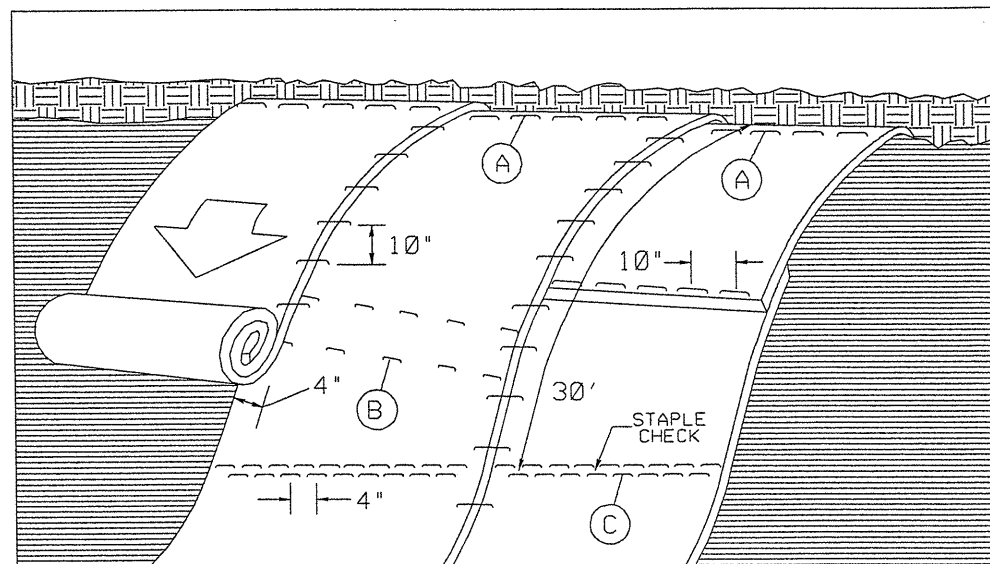


DIAGRAM (A)



**MATTING ON SLOPES**

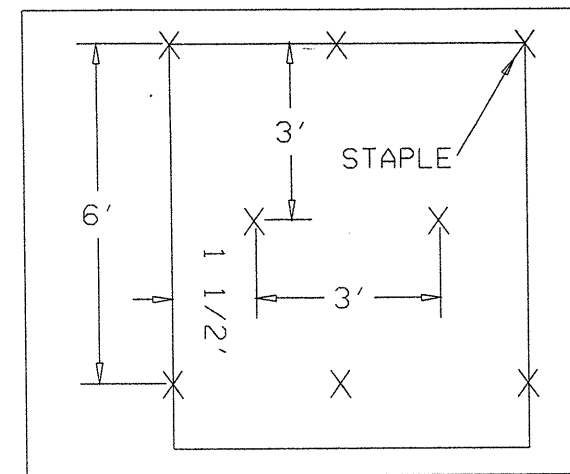


DIAGRAM (B)

STAPLE CHECK PATTERN

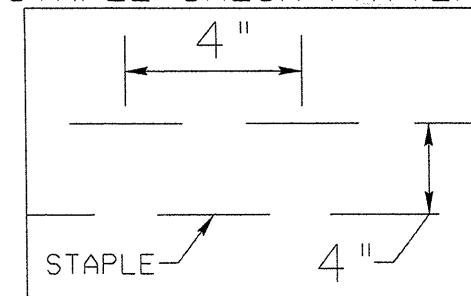


DIAGRAM (C)

**NOTES:**

THIS DETAIL APPLIES TO STRAW, EXCELSIOR, AND PERMANENT SOIL REINFORCEMENT MAT (PSRM) INSTALLATION.

STAPLES SHALL BE NO. 11 GAUGE STEEL WIRE FORMED INTO A "U" SHAPE WITH A MINIMUM THROAT WIDTH OF 1 INCH AND NOT LESS THAN 6 INCHES IN LENGTH.

NOT TO SCALE

PROJECT NO.	SHEET NO.	TOTAL NO.
1C.070039, ETC	8	8

### SUMMARY OF QUANTITIES

PROJECT NO	COUNTY	MAP NO	ROUTE	DESCRIPTION	TYP NO	FINAL SURFACE TESTING REQUIRED	LENGTH MI	WIDTH FT	MOBILIZATION LS	BORROW CY	CONDITIONING EXISTING BASE MSY	INCIDENTAL STONE BASE TONS	SHOULDER RECONSTRUCTION SMI	PRIME COAT GAL	SURFACE COURSE, SF9.5A TONS	ASPHALT BINDER FOR PLANT MIX TONS	ADJ. OF MANHOLES EA	ADJ. OF METER OR VALVE BOX EA	TEMPORARY SILT FENCE LF	MATTING FOR EROSION CONTROL SY	WATTLE LF	POLYACRYLAMIDE (PAM) LB	SEED & MULCHING ACR
1C.070039	Pasquotank	1	SR 1491	FROM SR 1330 TO DEAD END	2	NO	0.120	18	1	100	1	5	0.24	457	110	7			160	32	30	7	0.12
1CR.20701.57	Pasquotank	2	SR 1309	FROM SR 1307 TO DEAD END	1	NO	1.560	18	*	100		10	3.12		1,384	93			70	32	200	7	0.66
1CR.20701.58	Pasquotank	3	SR 1128	FROM SR 1126 TO SR 1131	1	NO	2.050	18	*	100		15	4.10		1,998	134				32	120	7	2.00
1CR.20701.59	Pasquotank	4	SR 1131	FROM SR 1128 TO STOP SIGN	1	NO	0.204	18	*	100		5	0.40		179	12					40		2.00
1CR.20701.60	Pasquotank	5	SR 1384	FROM US 17 TO END MAINTENANCE	1	NO	0.140	18	*	100		5	0.28		138	9	1	1					0.07
1CR.20701.61	Pasquotank	6	SR 1351	FROM US 17 TO PAVEMENT CHANGE	1	NO	0.300	20	*	100		5	0.60		302	20			50		60		0.29
1CR.20701.62	Pasquotank	7	SR 1347	FROM US 17 TO DEAD END	1	NO	0.260	20	*	100		5	0.52		263	18		2			50		0.25
1CR.20701.63	Pasquotank	8	SR 1377	FROM SR 1350 TO SR 1349	1	NO	0.240	20	*	100		5	0.48		234	16		1			50		0.23
1CR.20701.64	Pasquotank	9	SR 1230	FROM SR 1131 TO DEAD END	1	NO	0.780	18	*	100		5	1.56		739	50					40		0.76
1CR.20701.65	Pasquotank	10	SR 1219	FROM SR 1145 TO SR 1223	1	NO	0.270	20	*	100		5	0.54		263	18		2			60		0.26
1CR.20701.66	Pasquotank	11	SR 1217	FROM SR 1169 TO DEAD END	1	NO	0.473	20	*	100		5	0.94		481	32					50		0.46
1CR.20701.67	Pasquotank	12	SR 1367	SR 1360 TO SR 1360	1	NO	0.690	17	*	100		10	1.38		592	40			90		100		0.67
1CR.20701.68	Pasquotank	13	SR 1486	FROM SR 1485 TO SR 1487	1	NO	0.430	21	*	100		5	0.86		440	29		1	20		60		0.42
1CR.20701.69	Pasquotank	14	SR 1487	FROM DEAD END TO DEAD END	1	NO	0.084	21	*	100		5	0.16		136	9		2			20		0.08
1CR.20701.70	Pasquotank	15	SR1403	FROM SR 1308 TO END OF PAVEMENT	1	NO	0.540	20	*	100		5	1.08		526	35					60		0.52
1CR.20701.71	Pasquotank	16	SR 1247	FROM SR 1169 TO DEAD END	1	NO	0.700	20	*	100		5	1.40		115	8		7			40		0.68
1CR.20701.72	Pasquotank	17	SR 1454	FROM SR 1456 TO DEAD END	1	NO	0.160	18	*	100		5	0.32		165	11					50		0.16
1CR.20701.73	Pasquotank	18	SR 1405	FROM SR 1397 TO DEAD END	1	NO	0.130	18	*	100		5	0.26		114	8					20		0.13
1CR.20701.74	Pasquotank	19	SR 1399	FROM SR 1308 TO SR 1401	1	NO	0.270	22	*	100		5	0.54		289	19			20		40		0.26
1CR.20701.75	Pasquotank	20	SR 1400	FROM SR 1395 TO SR 1399	1	NO	0.162	22	*	100		5	0.32		173	12			20		60		0.16
1CR.20701.76	Pasquotank	21	SR 1401	FROM SR 1399 TO SR 1395	1	NO	0.090	22	*	100		5	0.18		106	7			20		40		0.09
<b>GRAND TOTAL</b>							<b>9.653</b>		<b>1</b>	<b>2,100</b>	<b>1</b>	<b>125</b>	<b>19.28</b>	<b>457</b>	<b>8,747</b>	<b>587</b>	<b>1</b>	<b>16</b>	<b>450</b>	<b>64</b>	<b>1,190</b>	<b>14</b>	<b>10.27</b>

### THERMOPLASTIC AND PAINT QUANTITIES

PROJECT NO	COUNTY	MAP NO	ROUTE	DESCRIPTION	LENGTH	WIDTH	TEMPORARY TRAFFIC CONTROL LS	4" X 90 M WHITE THERMO LF	4" X 120 M YELLOW THERMO LF	4" WHITE PAINT LF	4" YELLOW PAINT LF	
1C.070039	Pasquotank	1	SR 1491	FROM SR 1330 TO DEAD END	0.12	18	1					
1CR.20701.57	Pasquotank	2	SR 1309	FROM SR 1307 TO DEAD END	1.56	18	*	16,786	10,296	16,786	10,296	
1CR.20701.58	Pasquotank	3	SR 1128	FROM SR 1126 TO SR 1131	2.05	18	*	22,058	13,530	22,058	13,530	
1CR.20701.59	Pasquotank	4	SR 1131	FROM SR 1128 TO STOP SIGN	0.204	18	*	2,195	1,346	2,195	1,346	
1CR.20701.60	Pasquotank	5	SR 1384	FROM US 17 TO END MAINTENANCE	0.14	18	*					
1CR.20701.61	Pasquotank	6	SR 1351	FROM US 17 TO PAVEMENT CHANGE	0.3	20	*	3,228	1,980	3,228	1,980	
1CR.20701.62	Pasquotank	7	SR 1347	FROM US 17 TO DEAD END	0.26	20	*					
1CR.20701.63	Pasquotank	8	SR 1377	FROM SR 1350 TO SR 1349	0.24	20	*		2,535		2,535	
1CR.20701.64	Pasquotank	9	SR 1230	FROM SR 1131 TO DEAD END	0.78	18	*		8,237		8,237	
1CR.20701.65	Pasquotank	10	SR 1219	FROM SR 1145 TO SR 1223	0.27	20	*		1,782		1,782	
1CR.20701.66	Pasquotank	11	SR 1217	FROM SR 1169 TO DEAD END	0.473	20	*	5,089	3,122	5,089	3,122	
1CR.20701.67	Pasquotank	12	SR 1367	SR 1360 TO SR 1360	0.69	17	*	7,424	7,286	7,424	7,286	
1CR.20701.68	Pasquotank	13	SR 1486	FROM SR 1485 TO SR 1487	0.43	21	*					
1CR.20701.69	Pasquotank	14	SR 1487	FROM DEAD END TO DEAD END	0.084	21	*					
1CR.20701.70	Pasquotank	15	SR1403	FROM SR 1308 TO END OF PAVEMENT	0.54	20	*					
1CR.20701.71	Pasquotank	16	SR 1247	FROM SR 1169 TO DEAD END	0.7	20	*					
1CR.20701.72	Pasquotank	17	SR 1454	FROM SR 1456 TO DEAD END	0.16	18	*					
1CR.20701.73	Pasquotank	18	SR 1405	FROM SR 1397 TO DEAD END	0.13	18	*		1,373		1,373	
1CR.20701.74	Pasquotank	19	SR 1399	FROM SR 1308 TO SR 1401	0.27	22	*		2,851		2,851	
1CR.20701.75	Pasquotank	20	SR 1400	FROM SR 1395 TO SR 1399	0.162	22	*		1,711		1,711	
1CR.20701.76	Pasquotank	21	SR 1401	FROM SR 1399 TO SR 1395	0.09	22	*		951		951	
<b>GRAND TOTAL</b>							<b>9.653</b>	<b>1</b>	<b>56,780</b>	<b>57,000</b>	<b>56,780</b>	<b>57,000</b>
												<b>113,780</b>