

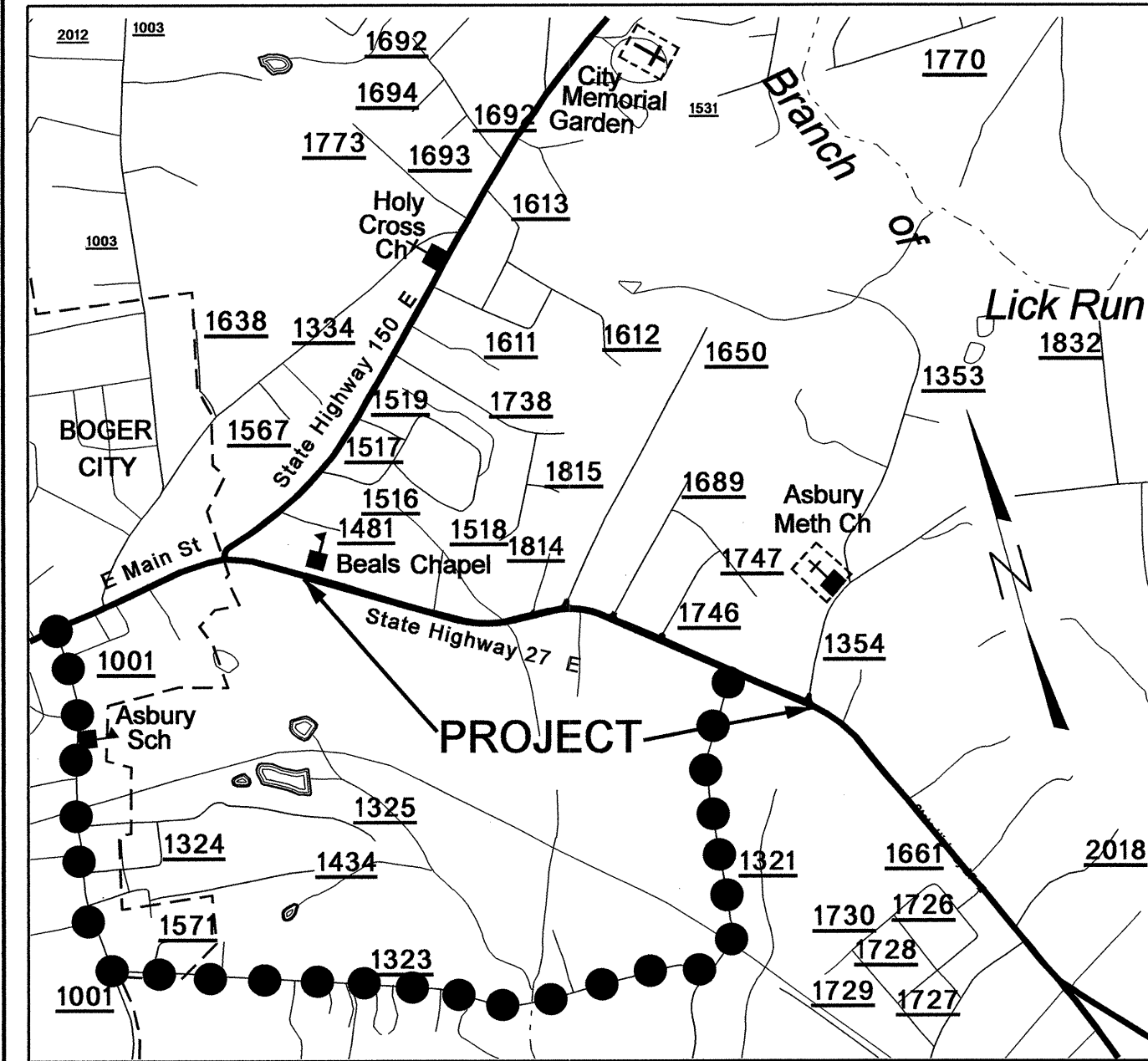
STATE	STATE PROJECT REFERENCE NO.	SHEET NO.	TOTAL SHEETS
N.C.	W-4712	EC-1	
STATE PROJ. NO.	F.A. PROJ. NO.	DESCRIPTION	

STATE OF NORTH CAROLINA
DIVISION OF HIGHWAYS
**PLAN FOR PROPOSED
HIGHWAY EROSION CONTROL**

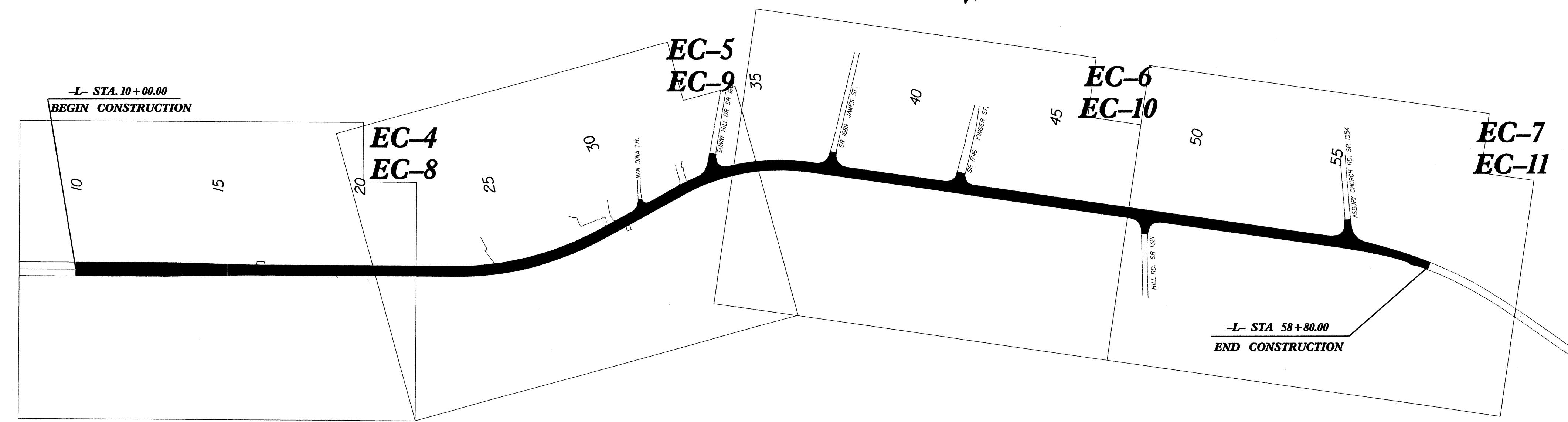
EROSION AND SEDIMENT CONTROL MEASURES

Std. #	Description	Symbol
1630.03	Temporary Silt Ditch	TD
1630.05	Temporary Diversion	TD
1605.01	Temporary Silt Fence	III III III
1606.01	Special Sediment Control Fence	III III III
1622.01	Temporary Berms and Slope Drains	TSD
1630.02	Silt Basin Type B	Silt Basin Symbol
1633.01	Temporary Rock Silt Check Type-A	Rock Silt Check Symbol
	Temporary Rock Silt Check Type-A with Matting and Polyacrylamide (PAM)	Rock Silt Check Symbol
1633.02	Temporary Rock Silt Check Type-B	Rock Silt Check Symbol
	Wattle / Coir Fiber Wattle	Wattle Symbol
	Wattle / Coir Fiber Wattle with Polyacrylamide (PAM)	Wattle Symbol
1634.01	Temporary Rock Sediment Dam Type-A	Rock Sediment Dam Symbol
1634.02	Temporary Rock Sediment Dam Type-B	Rock Sediment Dam Symbol
1635.01	Rock Pipe Inlet Sediment Trap Type-A	Rock Pipe Inlet Sediment Trap Symbol
1635.02	Rock Pipe Inlet Sediment Trap Type-B	Rock Pipe Inlet Sediment Trap Symbol
1630.04	Stilling Basin	Stilling Basin Symbol
1630.06	Special Stilling Basin	Special Stilling Basin Symbol
	Rock Inlet Sediment Trap:	
1632.01	Type A	A
1632.02	Type B	B
1632.03	Type C	C
	Skimmer Basin	Skimmer Basin Symbol
	Tiered Skimmer Basin	Tiered Skimmer Basin Symbol
	Infiltration Basin	Infiltration Basin Symbol

**THIS PROJECT CONTAINS
EROSION CONTROL PLANS
FOR CLEARING AND
GRUBBING PHASE OF
CONSTRUCTION.**



VICINITY MAP NOT TO SCALE



TIP PROJECT: W-4712

GRAPHIC SCALE

0
PLANS
0
PROFILE (HORIZONTAL)
0
PROFILE (VERTICAL)

ROADSIDE ENVIRONMENTAL UNIT
DIVISION OF HIGHWAYS
STATE OF NORTH CAROLINA

**THESE EROSION AND SEDIMENT CONTROL PLANS COMPLY
WITH THE REGULATIONS SET FORTH BY THE
NCG-010000 GENERAL CONSTRUCTION PERMIT EFFECTIVE AUGUST 3, 2011
ISSUED BY THE NORTH CAROLINA DEPARTMENT OF ENVIRONMENT AND
NATURAL RESOURCES DIVISION OF WATER QUALITY.**

Prepared in the Office of:
ROADSIDE ENVIRONMENTAL UNIT
1 South Wilmington St.
Raleigh, NC 27611
2012 STANDARD SPECIFICATIONS

Roadway Standard Drawings

The following roadway english standards as appear in "Roadway Standard Drawings"- Roadway Design Unit - N. C. Department of Transportation - Raleigh, N. C., dated January 2012 and the latest revision thereto are applicable to this project and by reference hereby are considered a part of these plans.

1604.01 Railroad Erosion Control Detail	1632.01 Rock Inlet Sediment Trap Type A
1605.01 Temporary Silt Fence	1632.02 Rock Inlet Sediment Trap Type B
1606.01 Special Sediment Control Fence	1632.03 Rock Inlet Sediment Trap Type C
1607.01 Gravel Construction Entrance	1633.01 Temporary Rock Silt Check Type A
1622.01 Temporary Berms and Slope Drains	1633.02 Temporary Rock Silt Check Type B
1630.01 Riser Basin	1634.01 Temporary Rock Sediment Dam Type A
1630.02 Silt Basin Type B	1634.02 Temporary Rock Sediment Dam Type B
1630.03 Temporary Silt Ditch	1635.01 Rock Pipe Inlet Sediment Trap Type A
1630.04 Stilling Basin	1635.02 Rock Pipe Inlet Sediment Trap Type B
1630.05 Temporary Diversion	1640.01 Coir Fiber Baffle
1630.06 Special Stilling Basin	1645.01 Temporary Stream Crossing
1631.01 Matting Installation	

I:\4-DEC-2011\045... Final Plans\W-4712\Title.she... 2012 spec.dgn

DIVISION OF HIGHWAYS
STATE OF NORTH CAROLINA

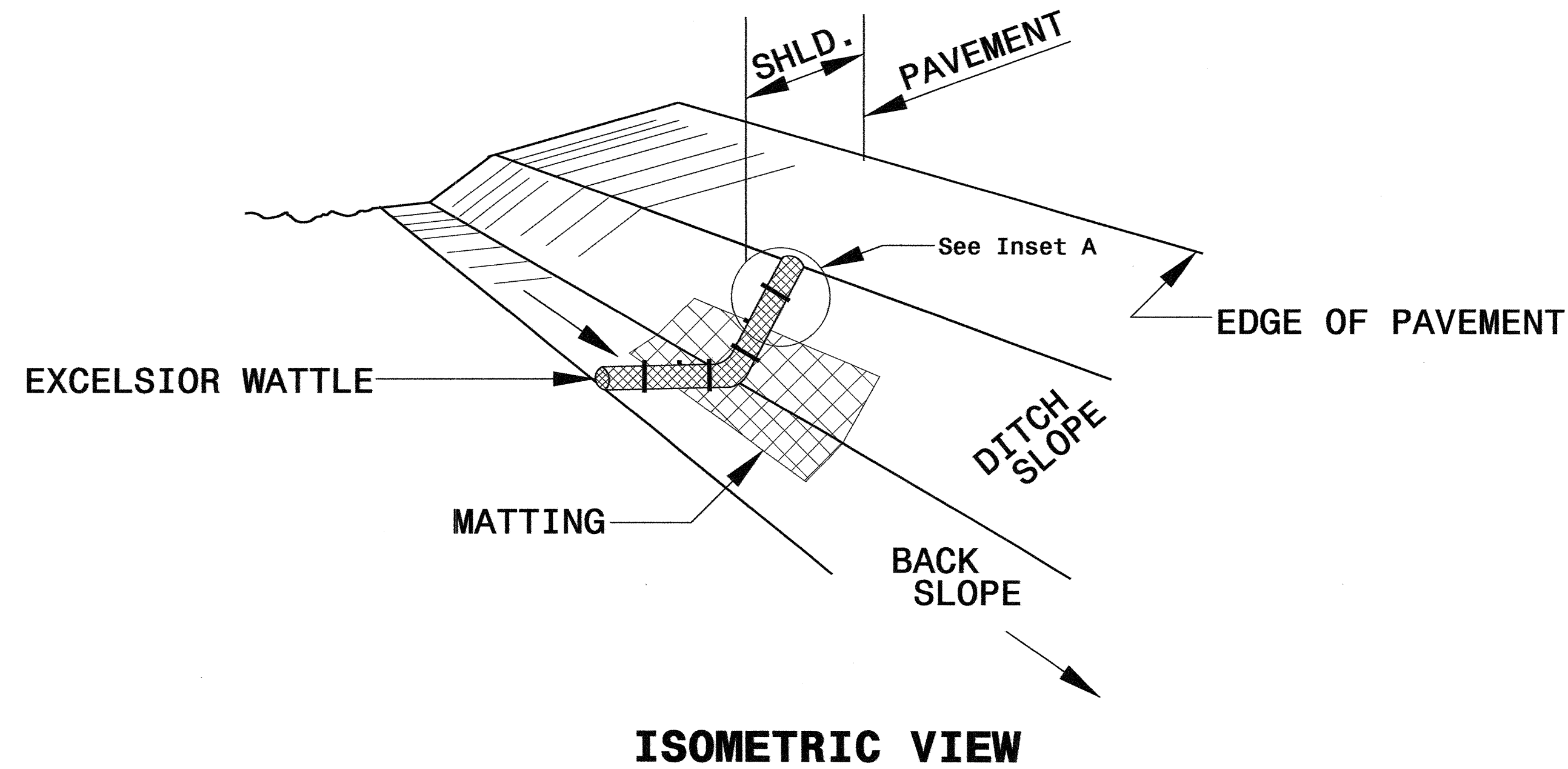
PROJECT REFERENCE NO. <i>W-4712</i>	SHEET NO. <i>EC-2</i>
ROADWAY DESIGN ENGINEER	HYDRAULICS ENGINEER

SOIL STABILIZATION TIMEFRAMES

<i>SITE DESCRIPTION</i>	<i>STABILIZATION TIME</i>	<i>TIMEFRAME EXCEPTIONS</i>
PERIMETER DIKES, SWALES, DITCHES AND SLOPES	7 DAYS	NONE
HIGH QUALITY WATER (HQW) ZONES	7 DAYS	NONE
SLOPES STEEPER THAN 3:1	7 DAYS	IF SLOPES ARE 10' OR LESS IN LENGTH AND ARE NOT STEEPER THAN 2:1, 14 DAYS ARE ALLOWED.
SLOPES 3:1 OR FLATTER	14 DAYS	7 DAYS FOR SLOPES GREATER THAN 50' IN LENGTH.
ALL OTHER AREAS WITH SLOPES FLATTER THAN 4:1	14 DAYS	NONE, EXCEPT FOR PERIMETERS AND HQW ZONES.

PROJECT REFERENCE NO. W-4712	SHEET NO. EC-2A
RW SHEET NO.	
ROADWAY DESIGN ENGINEER	HYDRAULICS ENGINEER

WATTLE DETAIL



NOTES:

USE MINIMUM 12 IN. DIAMETER EXCELSIOR WATTLE.

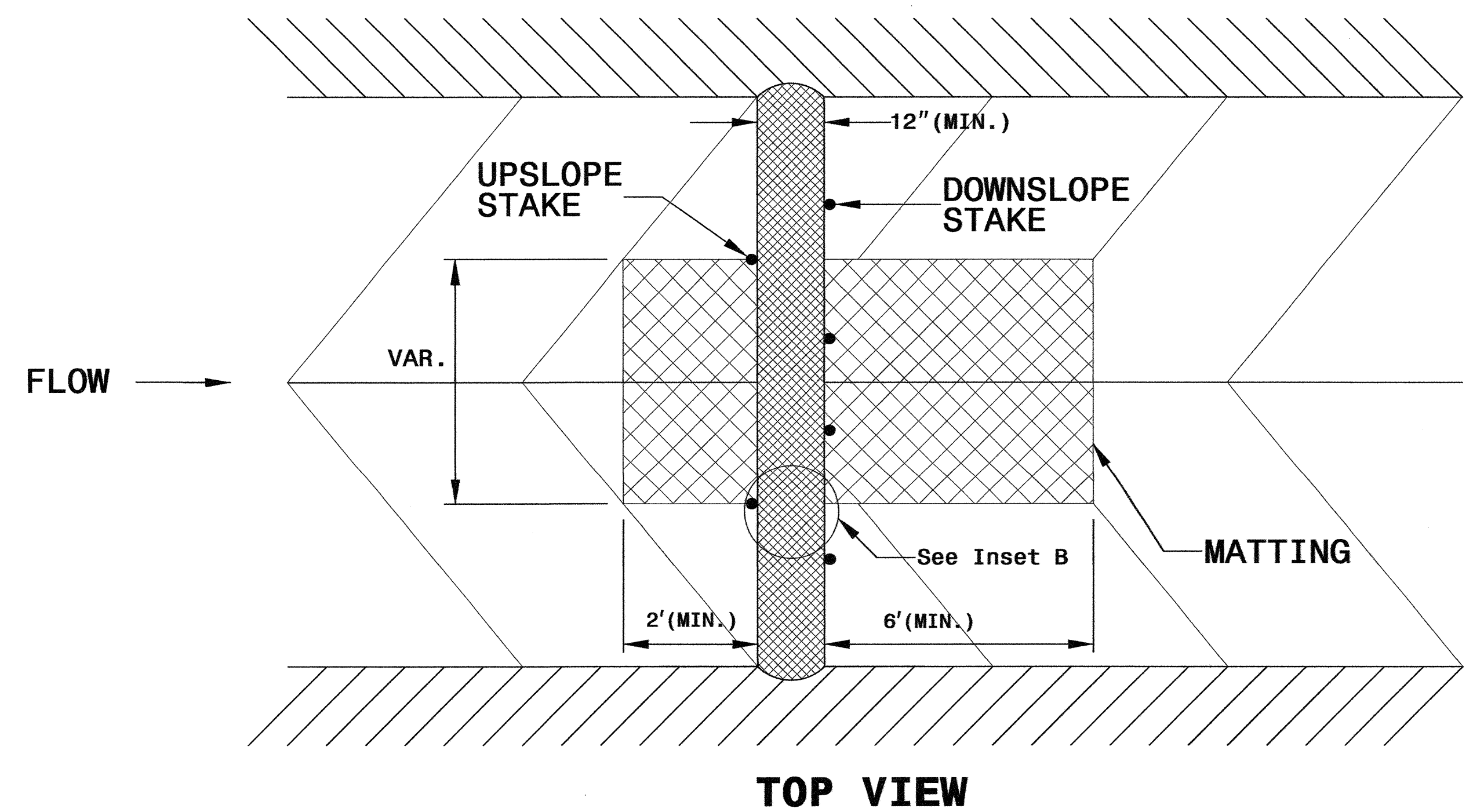
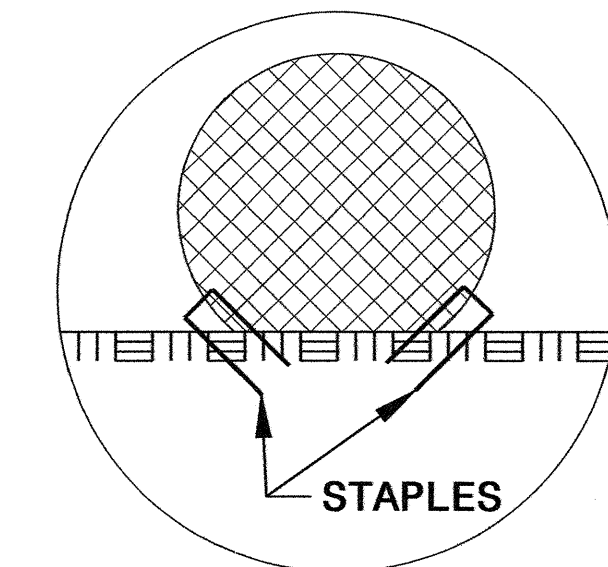
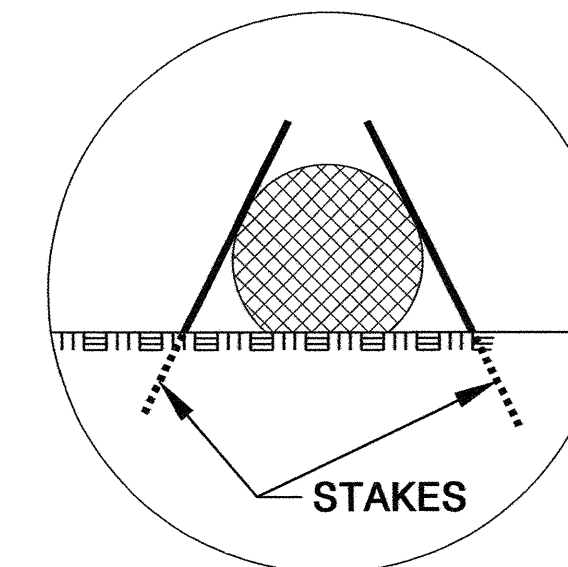
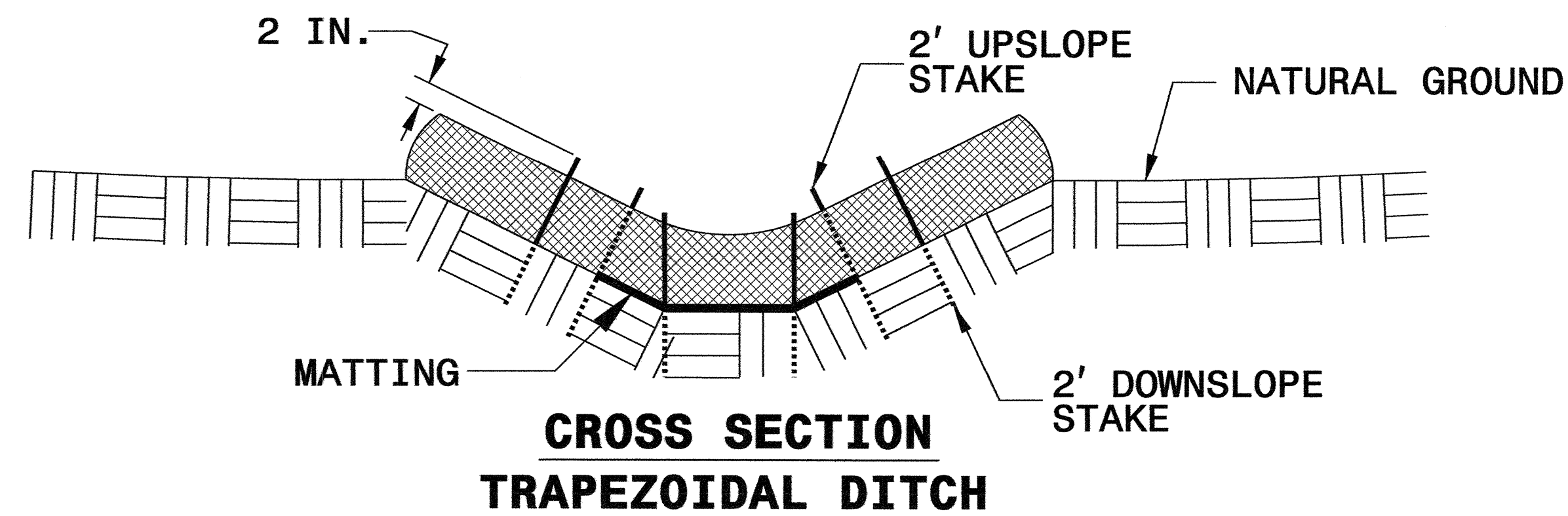
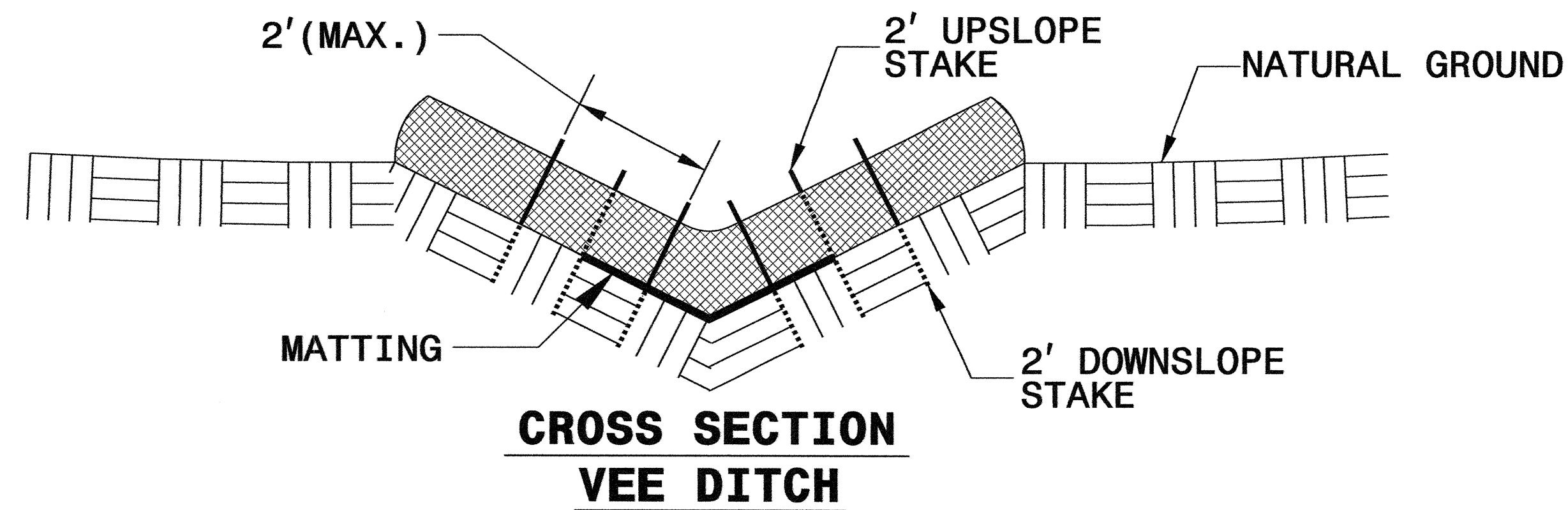
USE 2 FT. WOODEN STAKES WITH A 2 IN. BY 2 IN. CROSS SECTION.

INSTALL A MINIMUM OF 2 UPSLOPE STAKES AND 4 DOWNSLOPE STAKES AT AN ANGLE TO WEDGE WATTLE TO BOTTOM OF DITCH.

PROVIDE STAPLES MADE OF 0.125 IN. DIAMETER STEEL WIRE FORMED INTO A U SHAPE NOT LESS THAN 12" IN LENGTH.

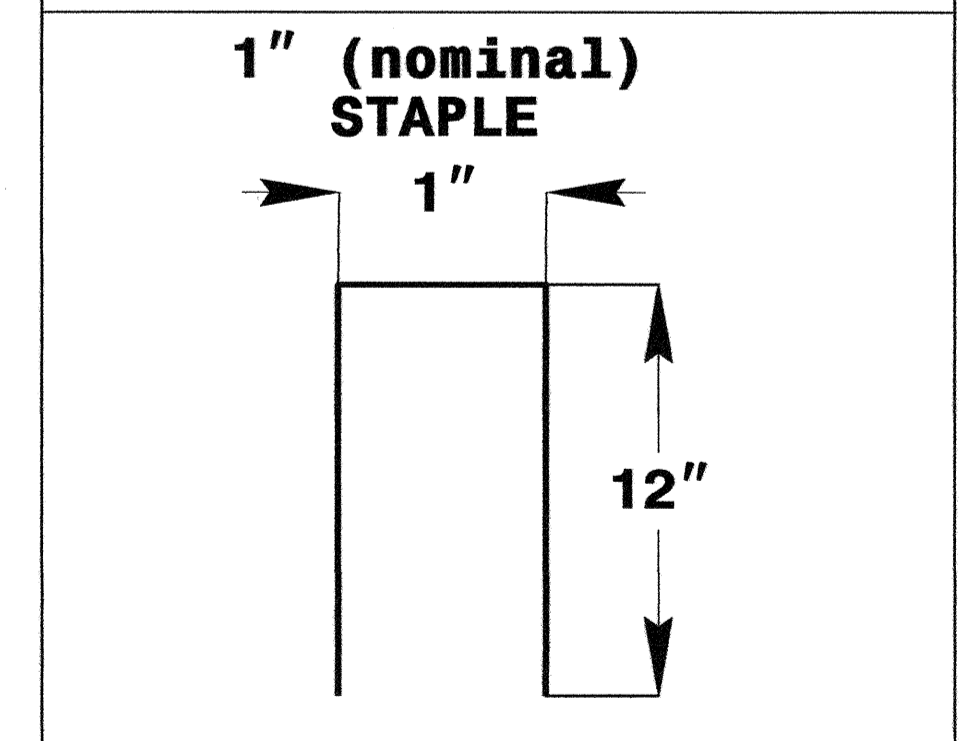
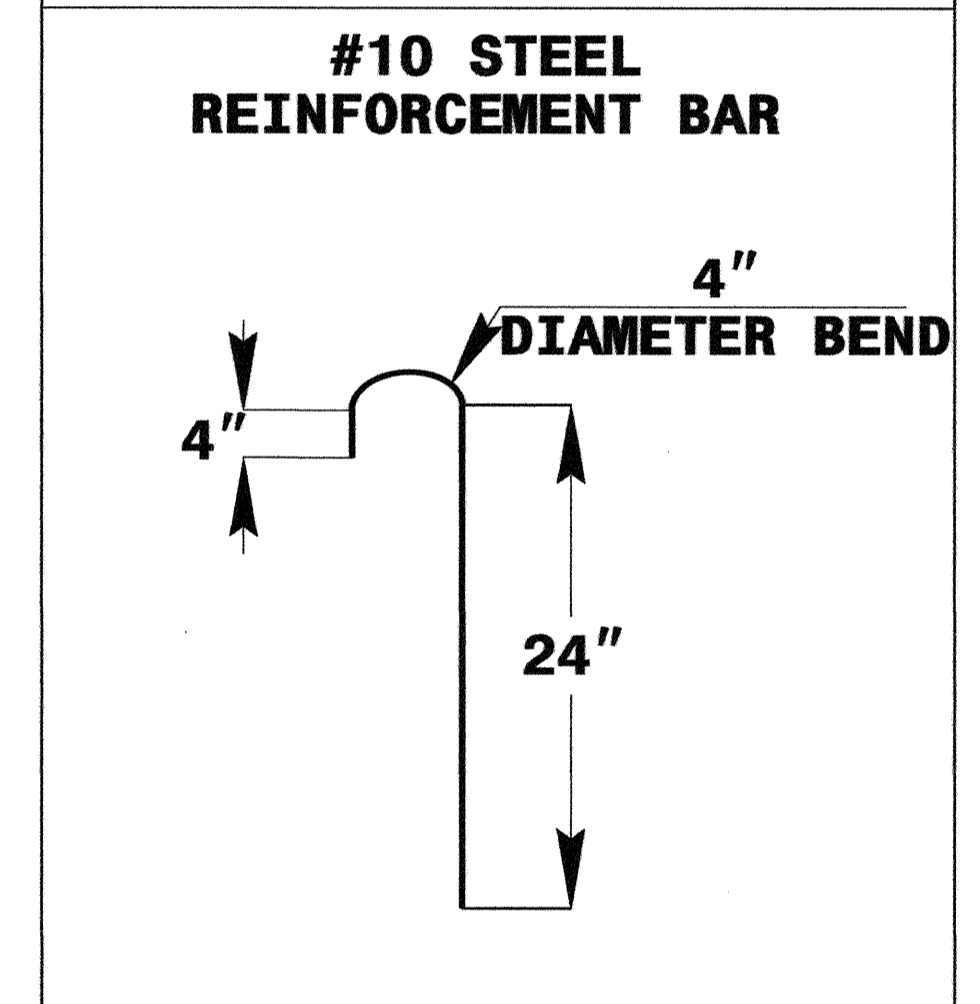
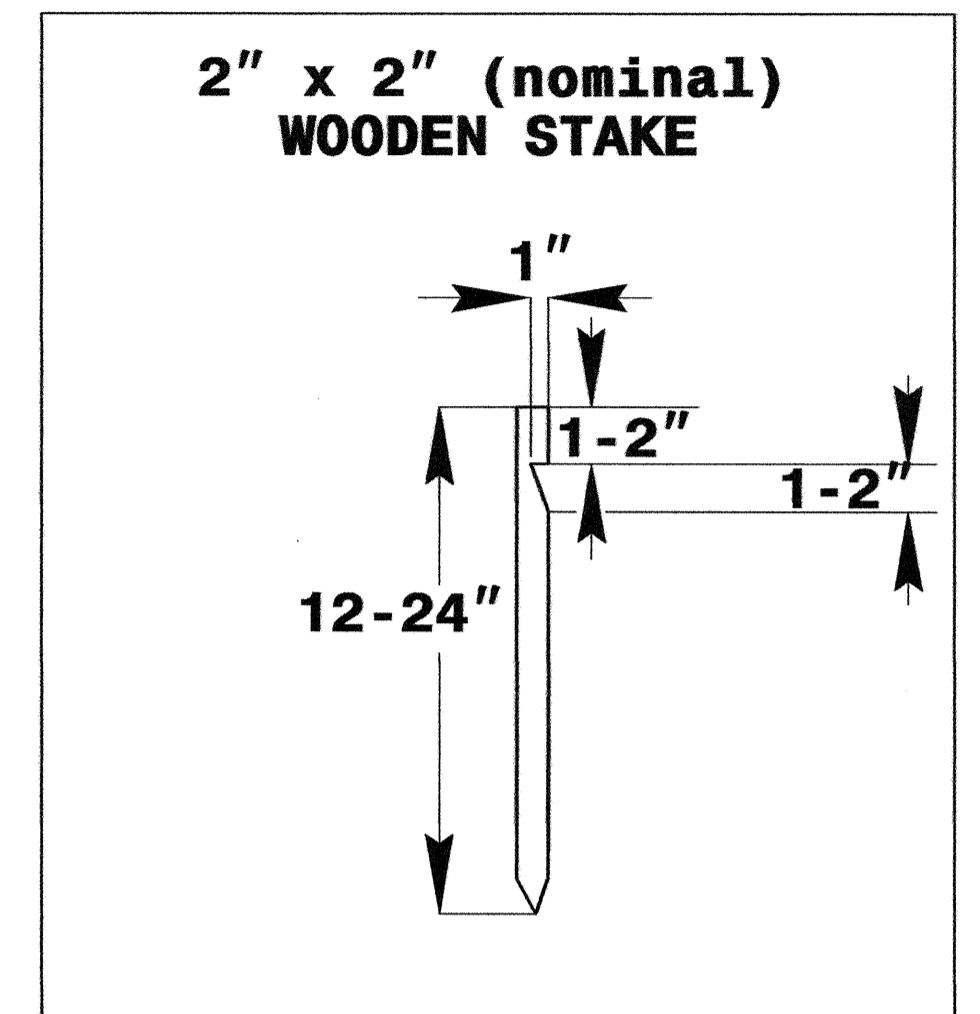
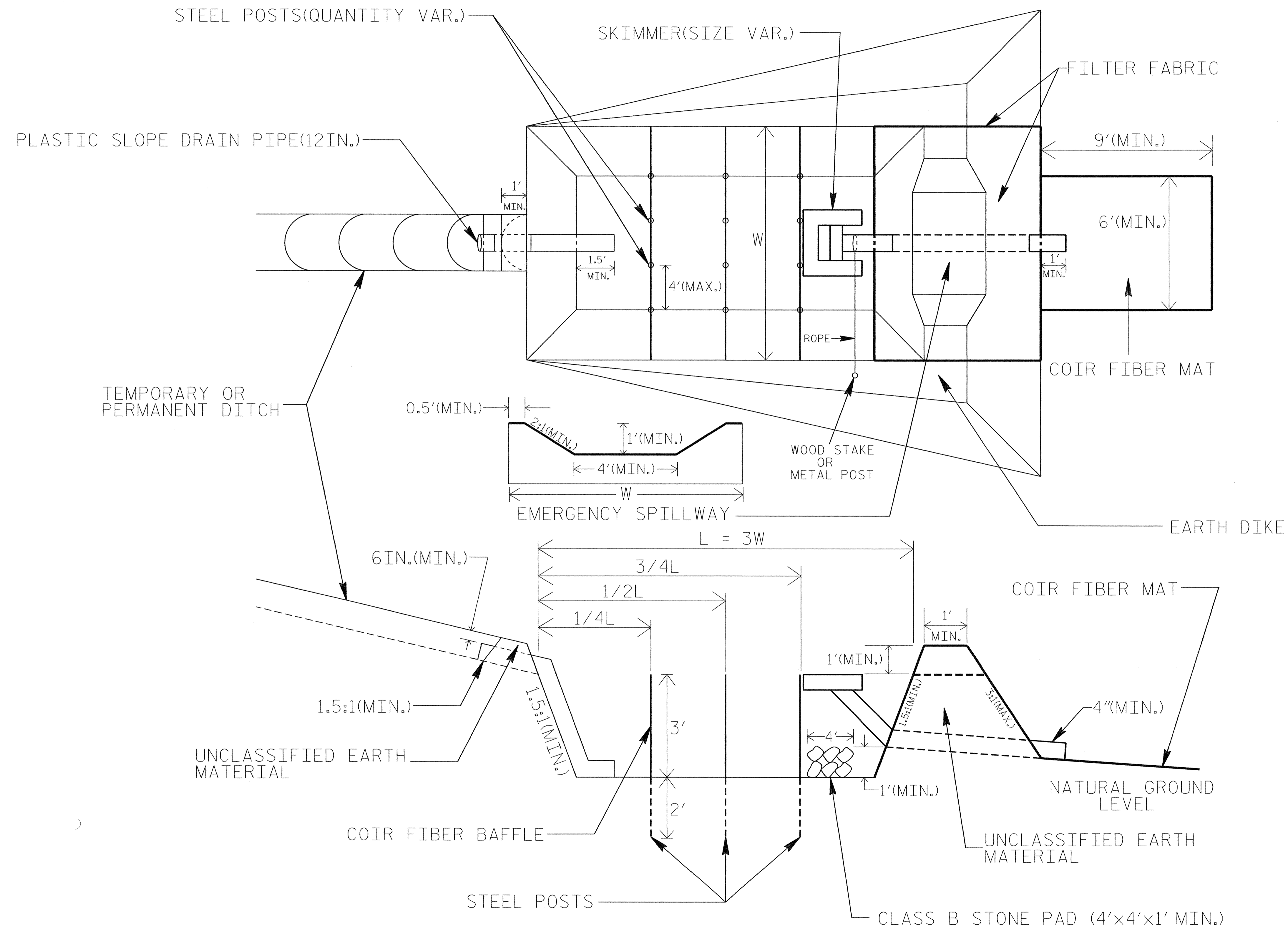
INSTALL STAPLES APPROXIMATELY EVERY 1 LINEAR FOOT ON BOTH SIDES OF WATTLE AND AT EACH END TO SECURE IT TO THE SOIL.

INSTALL MATTING IN ACCORDANCE WITH SECTION 1631 OF THE STANDARD SPECIFICATIONS.



SKIMMER BASIN WITH BAFFLES DETAIL

PROJECT REFERENCE NO. W-4712	SHEET NO. EC-2B
RW SHEET NO.	
ROADWAY DESIGN ENGINEER	HYDRAULICS ENGINEER



COIR FIBER MAT ANCHOR OPTIONS

NOTES

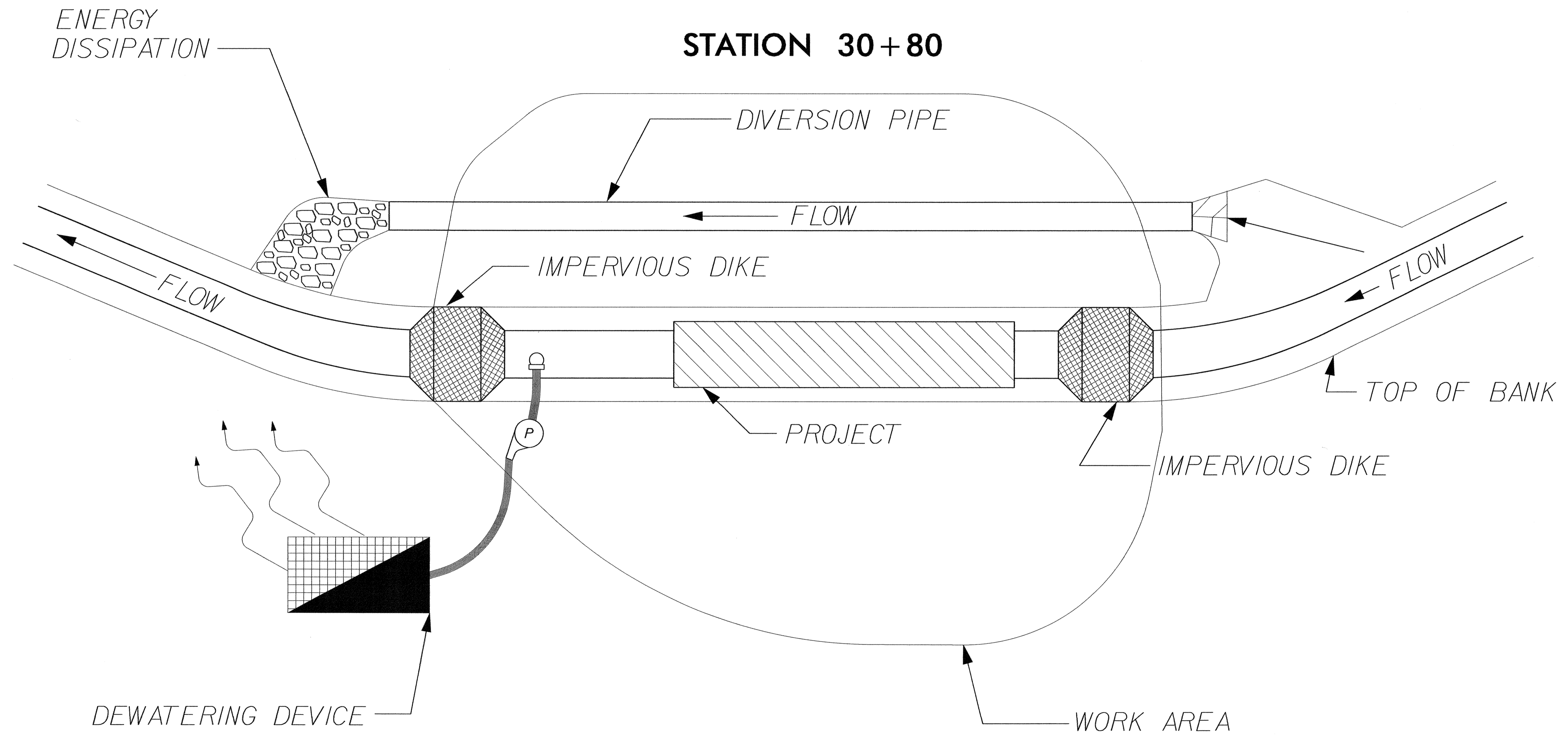
1. SEED AND PLACE MATTING FOR EROSION CONTROL ON INTERIOR SIDESLOPES.
2. LIMIT EARTH DIKE HEIGHT TO 5 FT.
3. THE MINIMUM BASIN WIDTH SHALL BE 9 FT.
4. DETERMINE EMERGENCY SPILLWAY LENGTH (FT.) USING $Q/0.8$, WHERE Q IS FLOW RATE (CFS) INTO BASIN.

NOT TO SCALE

8/17/99

PROJECT REFERENCE NO. W-4712	SHEET NO. EC-2C
RW SHEET NO.	
ROADWAY DESIGN ENGINEER	HYDRAULICS ENGINEER

PIPED DIVERSION 66 INCH CROSS PIPE



NOTE:
ENSURE TO ANCHOR ALL
PUMPS AND PIPES SECURELY

06-OCT-2010 10:01
S:\000\051813.ctb 3\Lincoln\W-4712\Plan Sheets\Erosion Control\w-4712-ec-pipe around 66in_2c.dgn
\$\$\$\$\$USERNAME\$\$\$\$\$

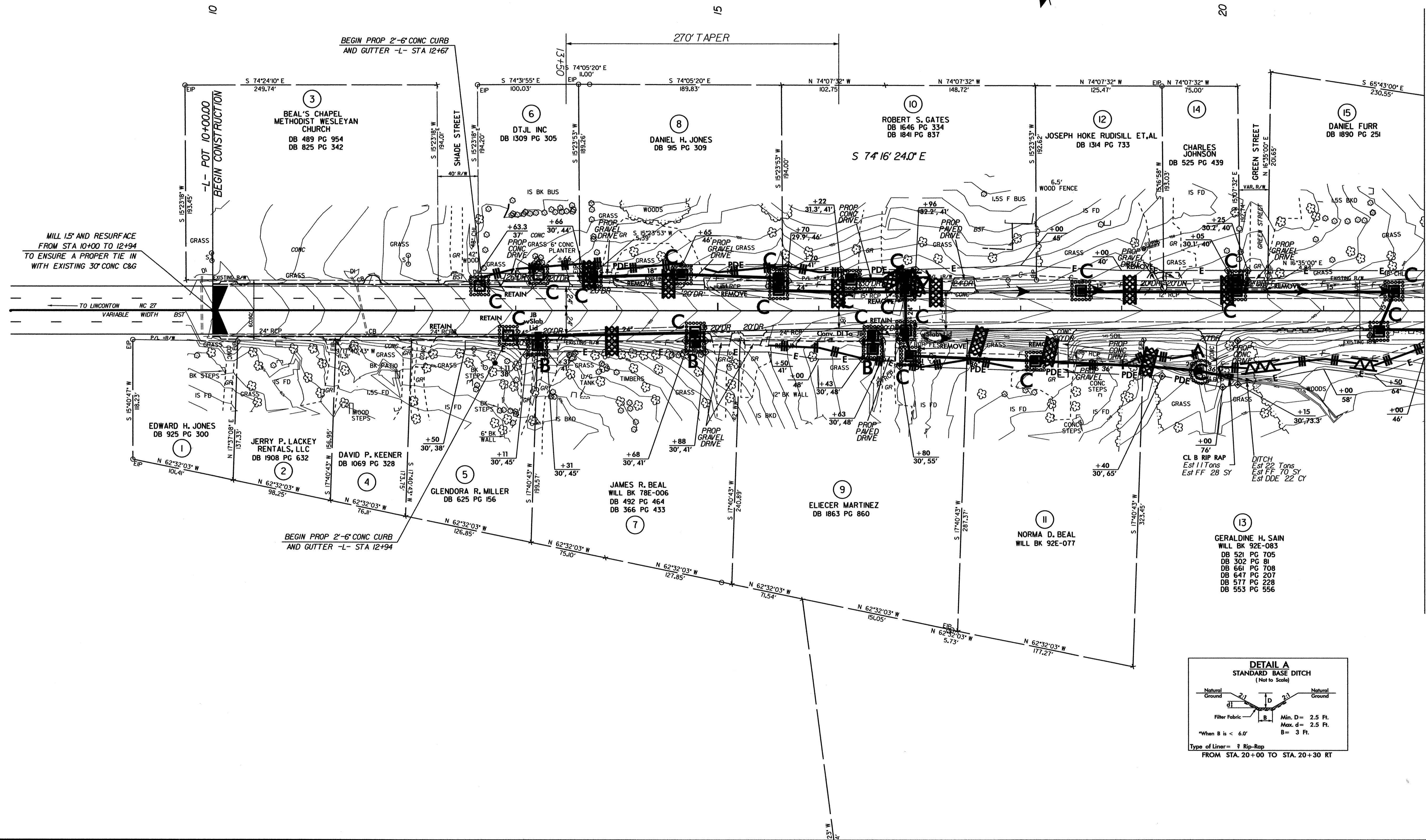
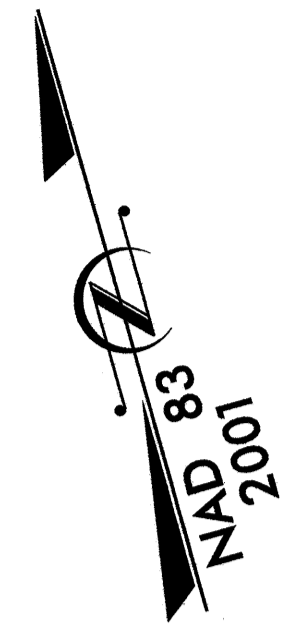
PROJECT REFERENCE NO. W-4712		SHEET NO. EC-4/CONST.4	
RW SHEET NO.			
ROADWAY DESIGN ENGINEER		HYDRAULICS ENGINEER	

NOTE:
PERIMETER EROSION CONTROL MEASURES SHALL BE INSTALLED DURING CLEARING AND GRUBBING PHASE.

NOTE:
PLACE TEMPORARY ROCK SEDIMENT DAMS TYPE - B AND TEMPORARY ROCK SILT CHECKS TYPE - A AT DRAINAGE OUTLETS.

CLEARING AND GRUBBING EROSION CONTROL FOR CONSTRUCTION SHEET 4

NOTE:
THE CONTRACTORS ATTENTION IS DIRECTED TO THE 2" PLASTIC NATURAL GAS LINE LOCATED FROM -L- STATION 10+00 TO APPROXIMATELY -L- STATION 21+00 ON THE LEFT. THE CONTRACTOR SHALL NOTIFY PIEDMONT NATURAL GAS TWO (2) WEEKS PRIOR TO BEGINNING CONSTRUCTION IN THIS AREA OF THE PROJECT AND ALLOW TIME FOR ADJUSTMENTS OF THIS UTILITY

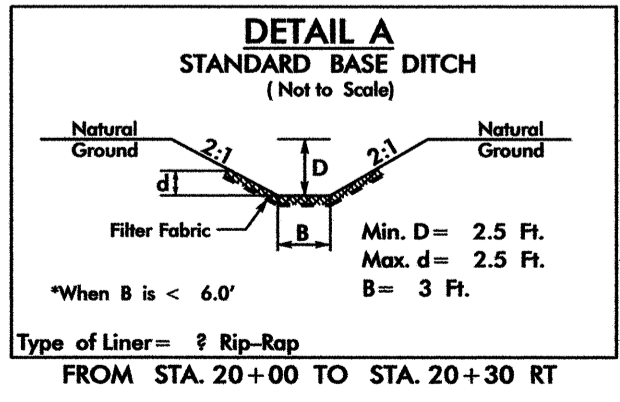


MILL 15' AND RESURFACE FROM STA 10+00 TO 12+94 TO ENSURE A PROPER TIE IN WITH EXISTING 30" CONC C&G

BEGIN PROP 2'-6" CONC CURB AND GUTTER -L- STA 12+67

270' TAPER

BEGIN PROP 2'-6" CONC CURB AND GUTTER -L- STA 12+94



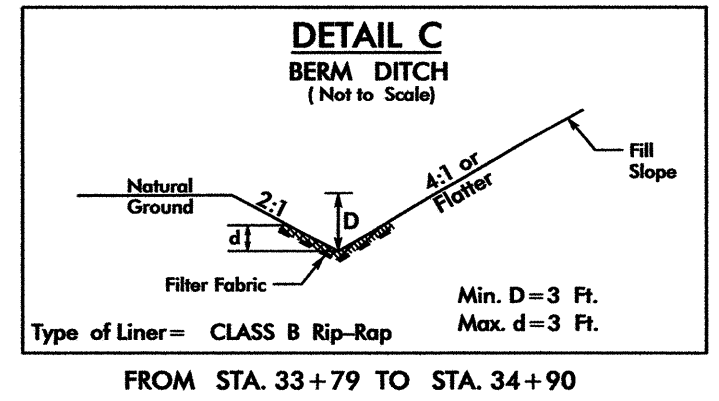
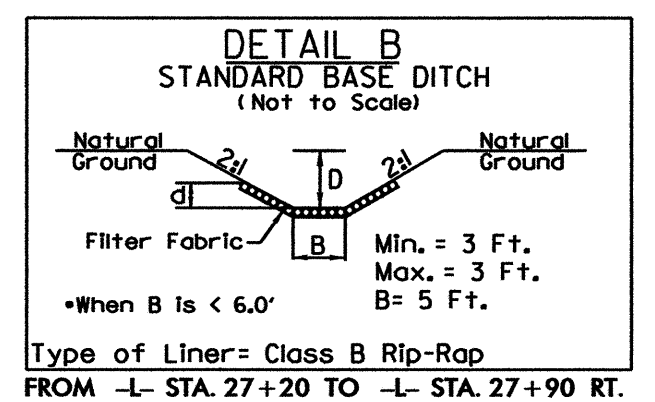
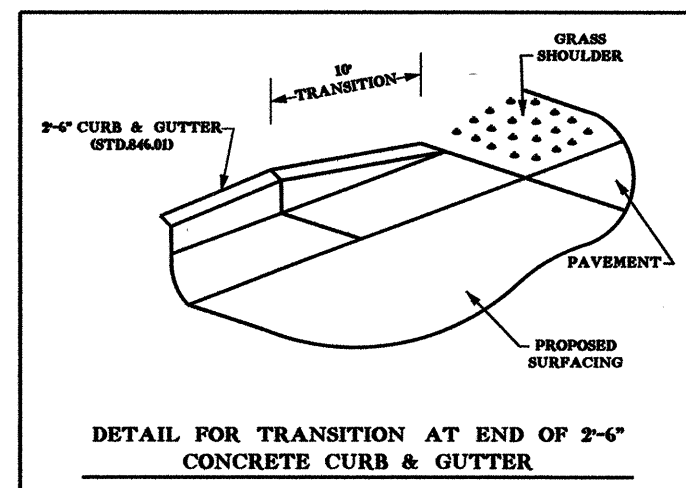
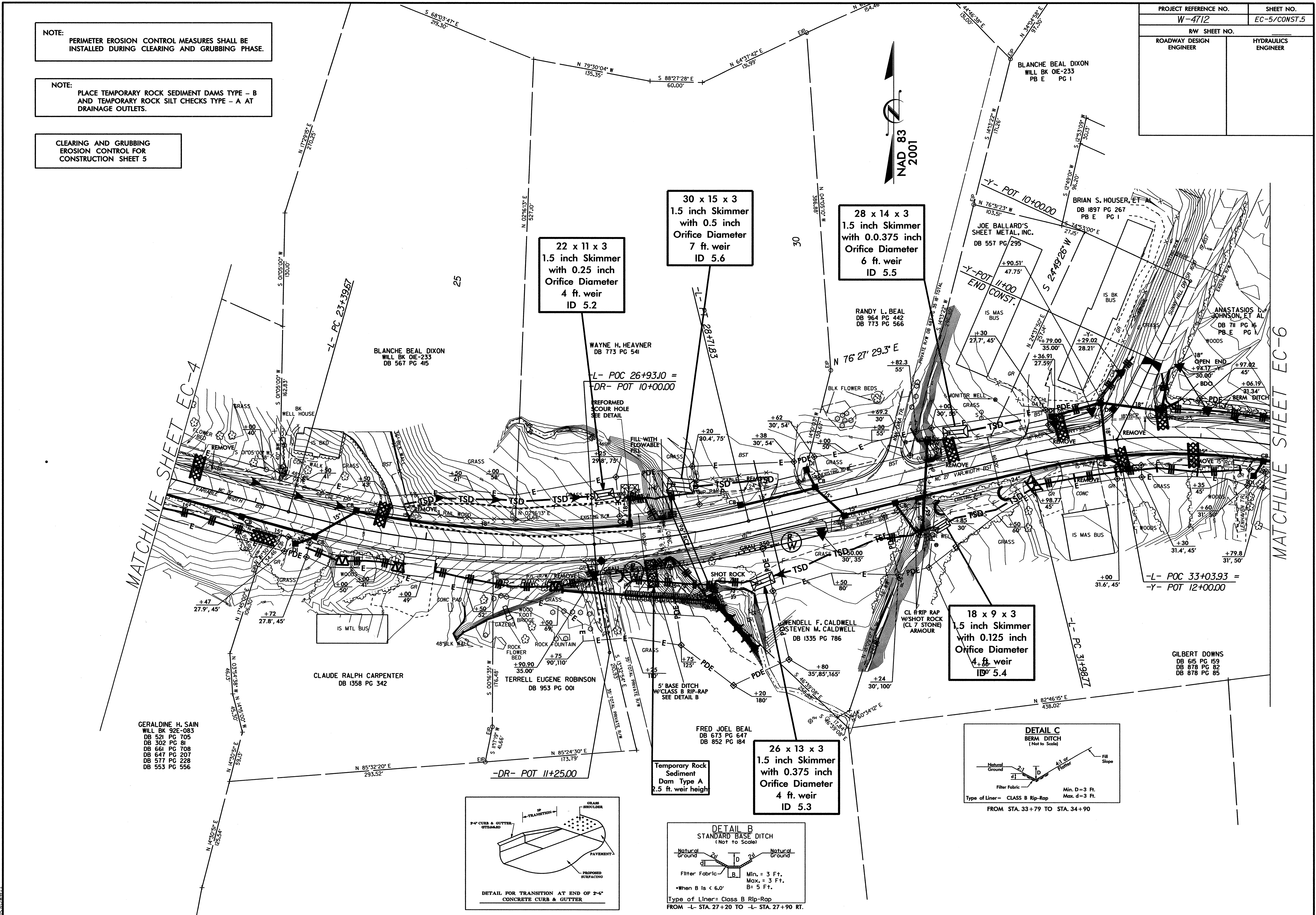
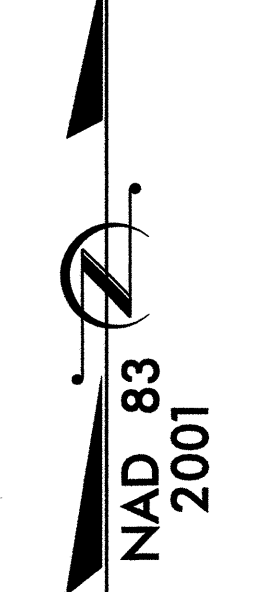
06-OCT-2010 09:35 S:\000\District 3\Lincoln\W-4712\Plan Sheets\Erosion Control\w-4712-ec-4_c&g.dgn

PROJECT REFERENCE NO.		SHEET NO.	
W-4712		EC-5/CONST.5	
RW SHEET NO.			
ROADWAY DESIGN ENGINEER		HYDRAULICS ENGINEER	

NOTE:
PERIMETER EROSION CONTROL MEASURES SHALL BE INSTALLED DURING CLEARING AND GRUBBING PHASE.

NOTE:
PLACE TEMPORARY ROCK SEDIMENT DAMS TYPE - B AND TEMPORARY ROCK SILT CHECKS TYPE - A AT DRAINAGE OUTLETS.

CLEARING AND GRUBBING EROSION CONTROL FOR CONSTRUCTION SHEET 5



MATCHLINE SHEET EC-4

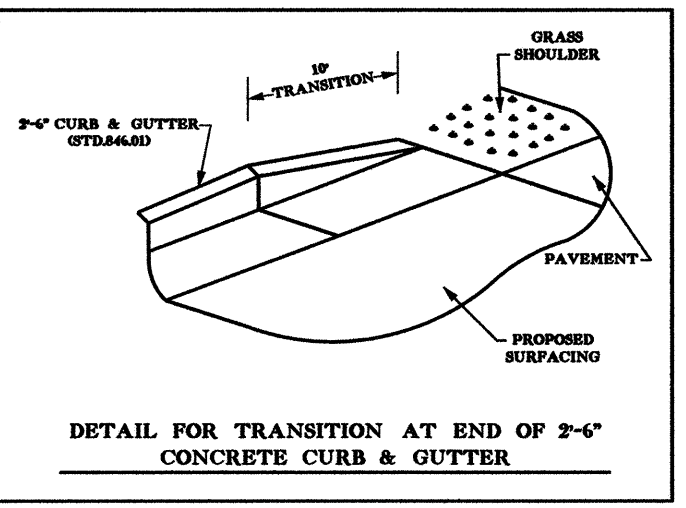
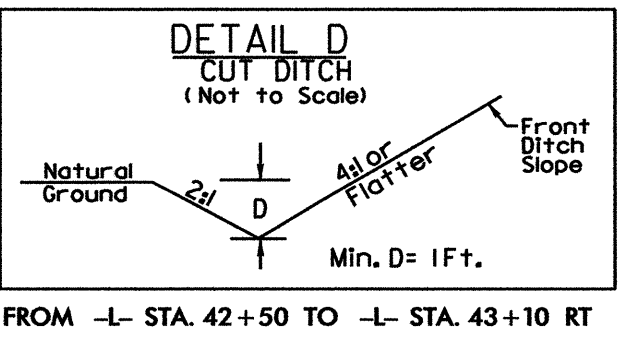
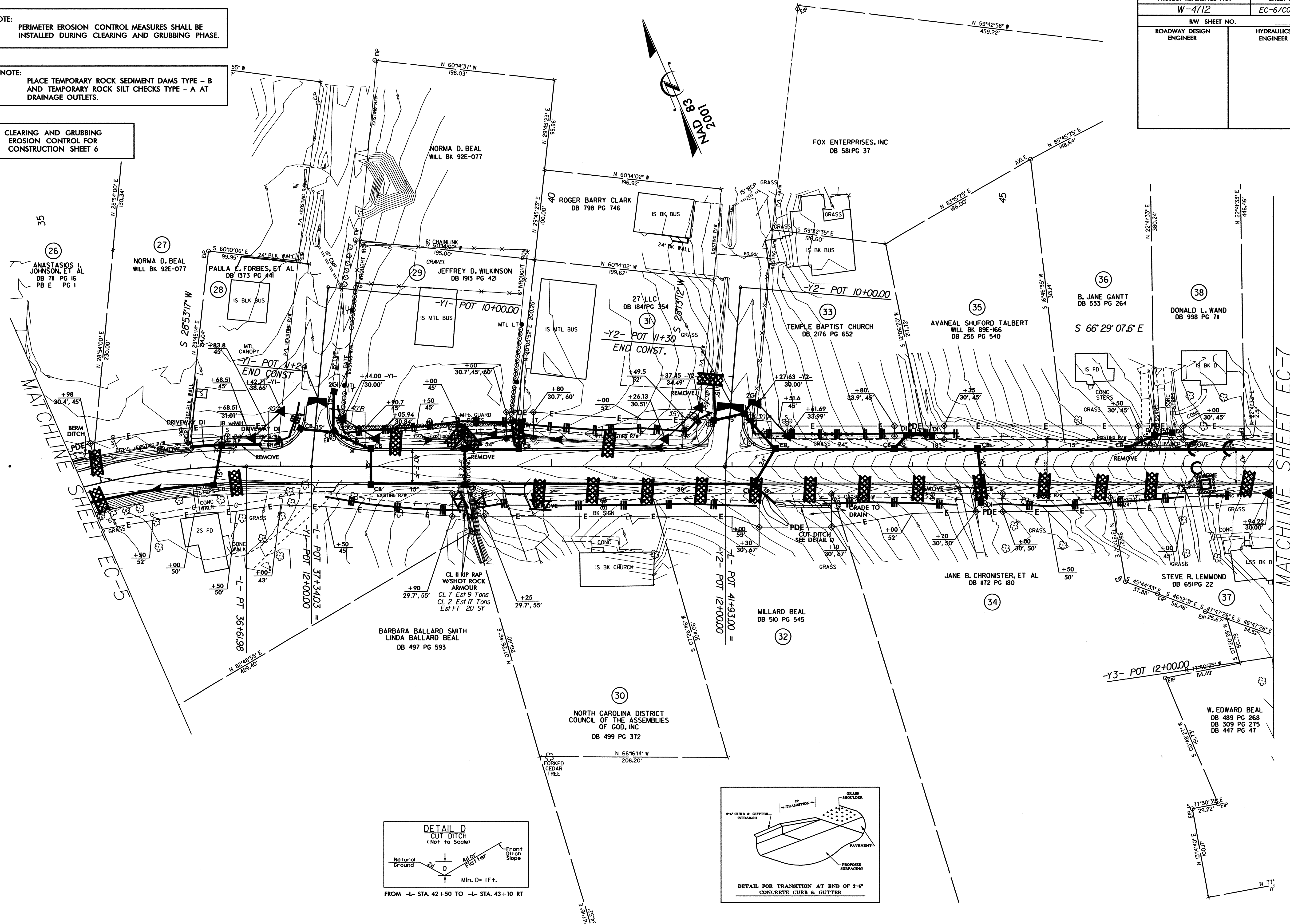
MATCHLINE SHEET EC-6

PROJECT REFERENCE NO.		SHEET NO.	
W-4712		EC-6/CONST.6	
RW SHEET NO.			
ROADWAY DESIGN ENGINEER		HYDRAULICS ENGINEER	

NOTE: PERIMETER EROSION CONTROL MEASURES SHALL BE INSTALLED DURING CLEARING AND GRUBBING PHASE.

NOTE: PLACE TEMPORARY ROCK SEDIMENT DAMS TYPE - B AND TEMPORARY ROCK SILT CHECKS TYPE - A AT DRAINAGE OUTLETS.

CLEARING AND GRUBBING EROSION CONTROL FOR CONSTRUCTION SHEET 6



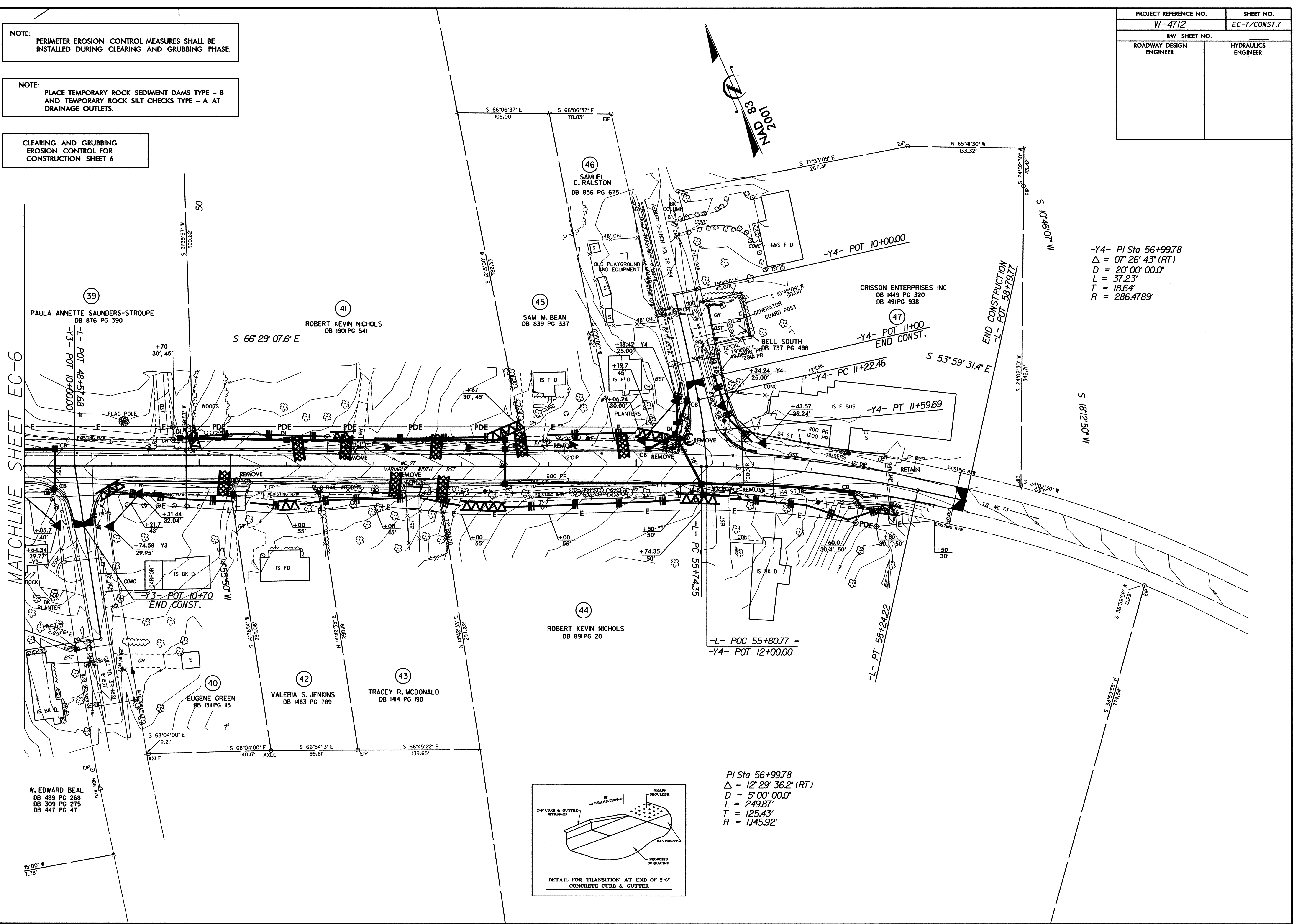
8/17/99
06-001-20108-46
S:\000\District 3\Lincoln\W-4712\Plan Sheets\Erosion Control\w-4712-ec-6.c&g.dgn

PROJECT REFERENCE NO.	SHEET NO.
W-4712	EC-7/CONST.7
RW SHEET NO.	
ROADWAY DESIGN ENGINEER	HYDRAULICS ENGINEER

NOTE: PERIMETER EROSION CONTROL MEASURES SHALL BE INSTALLED DURING CLEARING AND GRUBBING PHASE.

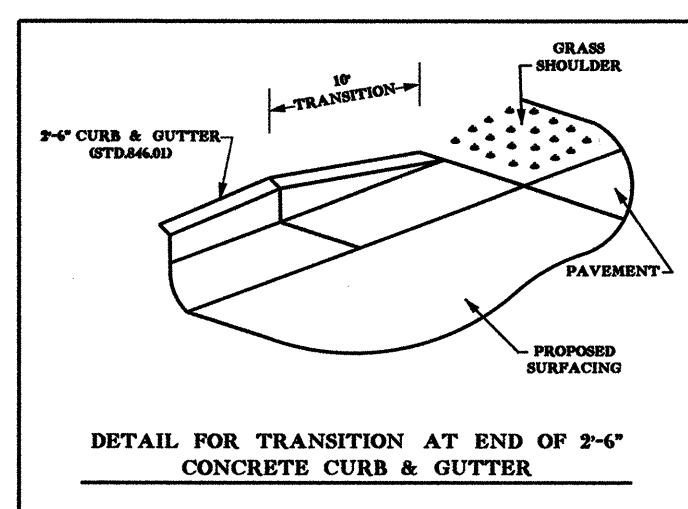
NOTE: PLACE TEMPORARY ROCK SEDIMENT DAMS TYPE - B AND TEMPORARY ROCK SILT CHECKS TYPE - A AT DRAINAGE OUTLETS.

CLEARING AND GRUBBING EROSION CONTROL FOR CONSTRUCTION SHEET 6



-Y4- PI Sta 56+99.78
 $\Delta = 07^{\circ} 26' 43''$ (RT)
 $D = 20' 00' 00.0''$
 $L = 37.23'$
 $T = 18.64'$
 $R = 286.4789'$

PI Sta 56+99.78
 $\Delta = 12^{\circ} 29' 36.2''$ (RT)
 $D = 5' 00' 00.0''$
 $L = 249.87'$
 $T = 125.43'$
 $R = 1,145.92'$

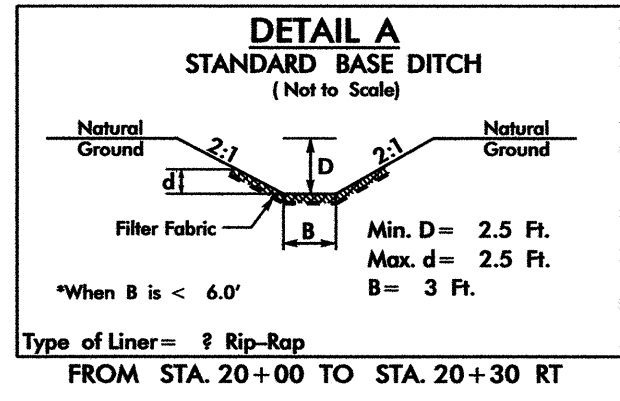
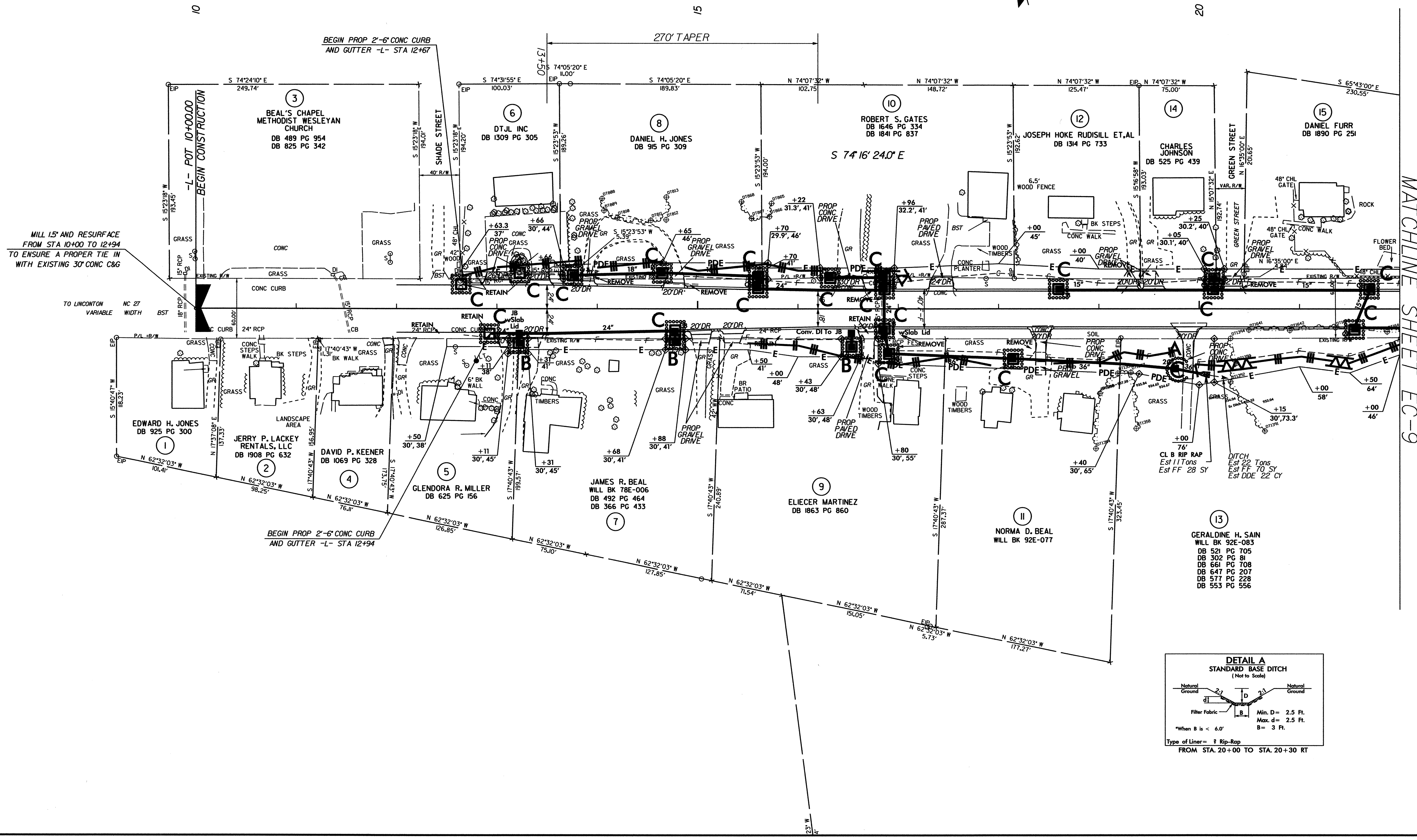
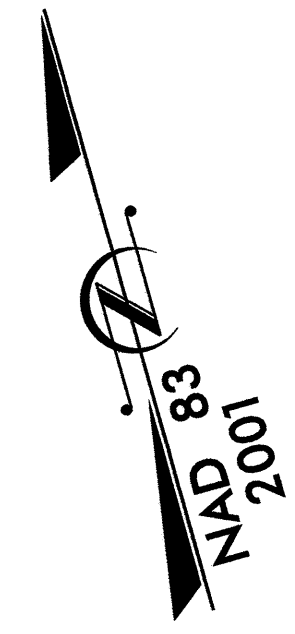


MATCHLINE SHEET EC-6

8/17/99
 06-001-20108-07
 S:\000\District 3\Lincoln\W-4712\Plan Sheets\Erosion Control\W-4712-ec-7_c&g.dgn

PROJECT REFERENCE NO.	SHEET NO.
W-4712	EC-8/CONST.4
RW SHEET NO.	
ROADWAY DESIGN ENGINEER	HYDRAULICS ENGINEER

NOTE:
 THE CONTRACTORS ATTENTION IS DIRECTED TO THE 2" PLASTIC NATURAL GAS LINE LOCATED FROM -L- STATION 10+00 TO APPROXIMATELY -L- STATION 21+00 ON THE LEFT. THE CONTRACTOR SHALL NOTIFY PIEDMONT NATURAL GAS TWO (2) WEEKS PRIOR TO BEGINNING CONSTRUCTION IN THIS AREA OF THE PROJECT AND ALLOW TIME FOR ADJUSTMENTS OF THIS UTILITY



MATCHLINE SHEET EC-9

8/17/99

G:\06T-20108\01\3\Lincoln\W-4712\Plan Sheets\Erection Control\w-4712-ec-8.f.n.a.l.dgn

PROJECT REFERENCE NO.	SHEET NO.
W-4712	EC-9/CONST.5
RW SHEET NO.	
ROADWAY DESIGN ENGINEER	HYDRAULICS ENGINEER

BLANCHE BEAL DIXON
WILL BK OIE-233
PB E PG 1

BRIAN S. HOUSER, ET AL
DB 1897 PG 267
PB E PG 1

JOE BALLARD'S
SHEET METAL, INC.
DB 557 PG 295

ANASTASIOS I. JOHNSON, ET AL
DB 711 PG 16
PB E PG 1

28 x 14 x 3
1.5 inch Skimmer
with 0.0375 inch
Orifice Diameter
6 ft. weir
ID 5.5

RANDY L. BEAL
DB 964 PG 442
DB 773 PG 566

22 x 11 x 3
1.5 inch Skimmer
with 0.25 inch
Orifice Diameter
4 ft. weir
ID 5.2

WAYNE H. HEAVNER
DB 773 PG 541

30 x 15 x 3
1.5 inch Skimmer
with 0.5 inch
Orifice Diameter
7 ft. weir
ID 5.6

18 x 9 x 3
1.5 inch Skimmer
with 0.125 inch
Orifice Diameter
4 ft. weir
ID 5.4

WENDELL F. CALDWELL
STEVEN M. CALDWELL
DB 1335 PG 786

26 x 13 x 3
1.5 inch Skimmer
with 0.375 inch
Orifice Diameter
4 ft. weir
ID 5.3

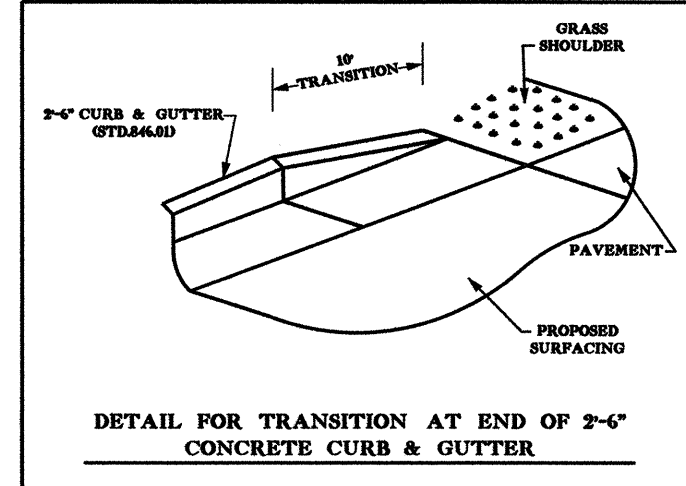
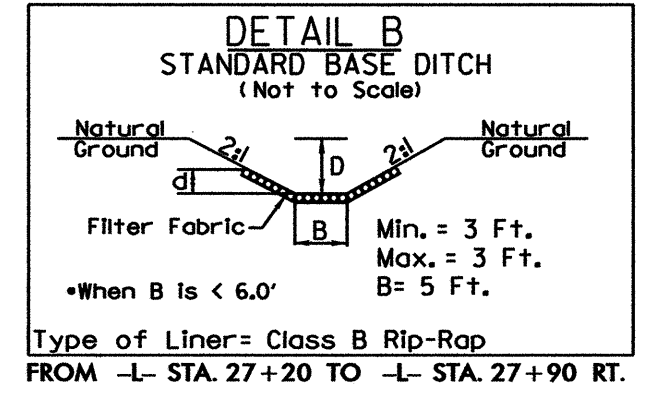
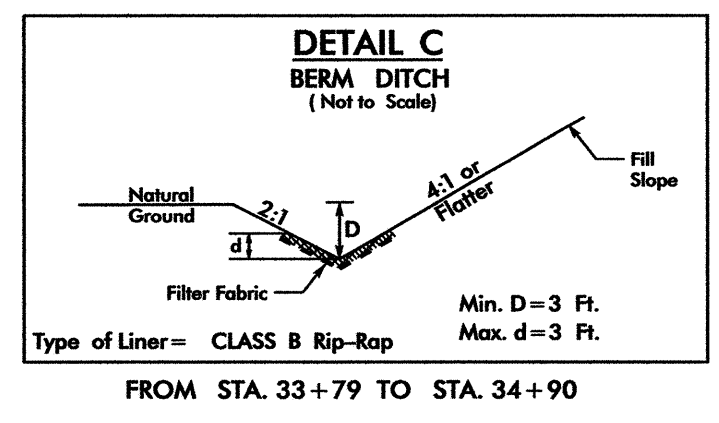
FRED JOEL BEAL
DB 673 PG 647
DB 852 PG 184

BLANCHE BEAL DIXON
WILL BK OIE-233
DB 567 PG 415

CLAUDE RALPH CARPENTER
DB 1358 PG 342

TERRELL EUGENE ROBINSON
DB 953 PG 001

GERALDINE H. SAIN
WILL BK 32E-083
DB 521 PG 705
DB 302 PG 81
DB 661 PG 708
DB 647 PG 207
DB 577 PG 228
DB 553 PG 556

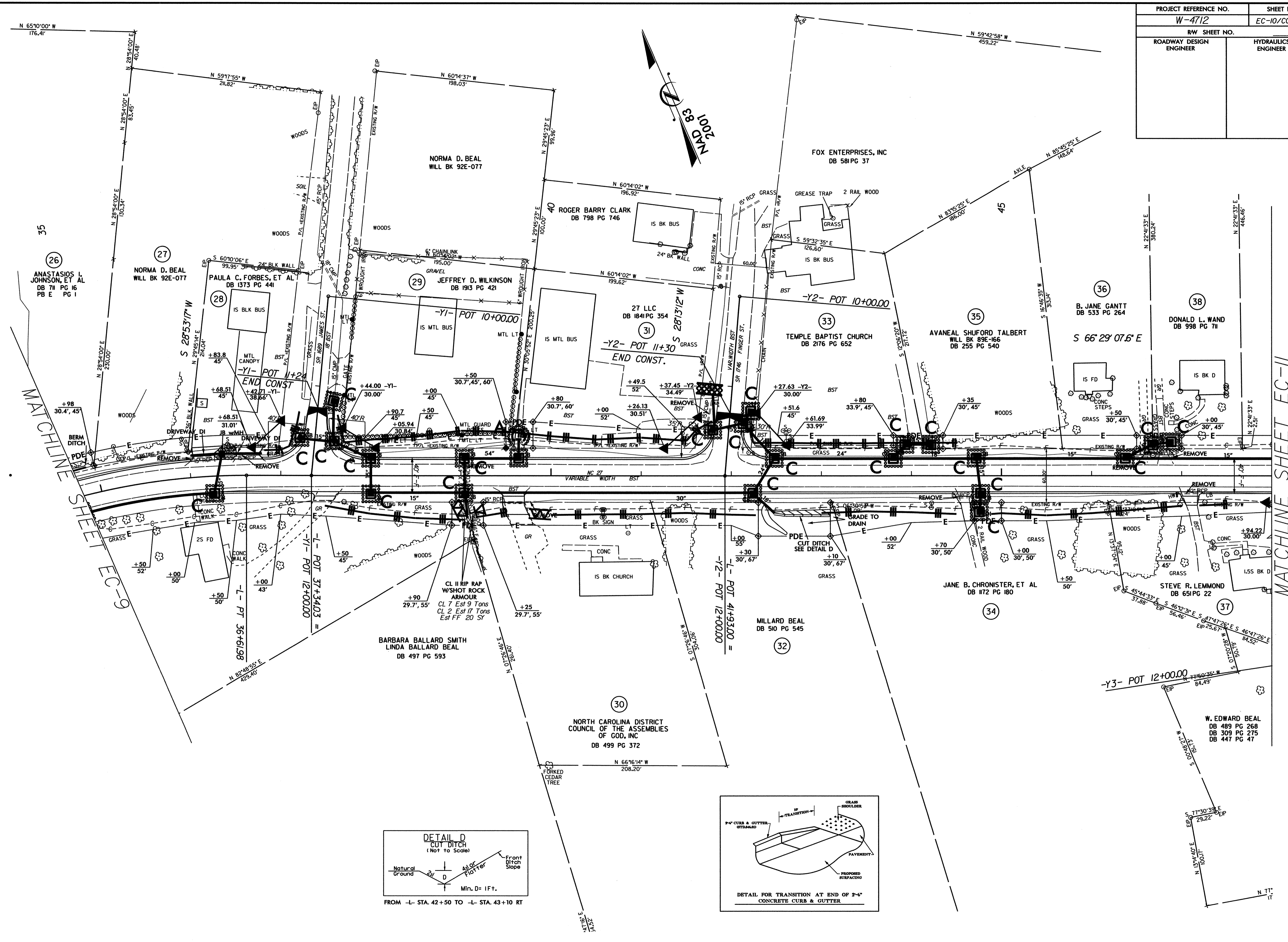


MATCHLINE SHEET EC-8

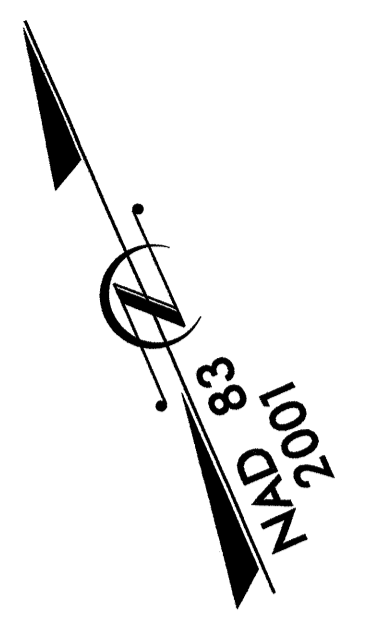
MATCHLINE SHEET EC-9

8/17/99
S:\00C\p\sheet\3\Lincoln\W-4712\Plan Sheets\Erosion Control\w-4712.ec-9.f.mel.dgn
06-001-20107439
R:\00C\p\sheet\3\Lincoln\W-4712\Plan Sheets\Erosion Control\w-4712.ec-9.f.mel.dgn

PROJECT REFERENCE NO.		SHEET NO.	
W-4712		EC-10/CONST.6	
RW SHEET NO.			
ROADWAY DESIGN ENGINEER		HYDRAULICS ENGINEER	

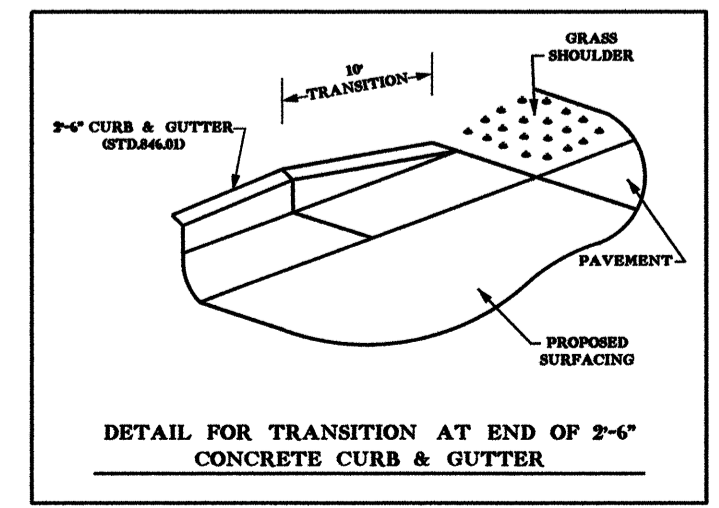
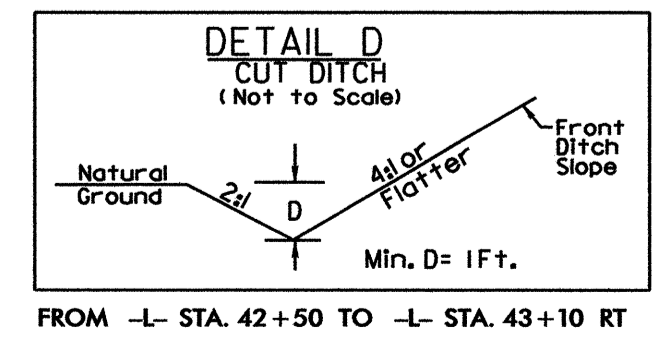


8/17/99



MATCHLINE SHEET EC-9

MATCHLINE SHEET EC-11



06-001-201(07.5) S:\000\District 3\Lincoln\W-4712\Plan Sheets\Erosion Control\w-4712.ec-10.fina.dgn

PROJECT REFERENCE NO.		SHEET NO.	
W-4712		EC-11/CONST.7	
RW SHEET NO.			
ROADWAY DESIGN ENGINEER		HYDRAULICS ENGINEER	

8/17/99
 28-NOV-2011 14:25
 S:\BDC\District 3\Lincoln\W-4712\Plan Sheets\Erosion Control\W-4712.ec-11.final.dgn
 Bksow

MATCHLINE SHEET EC-10

