

09/08/99

**WBS NO.: 1C.058054, ETC.**

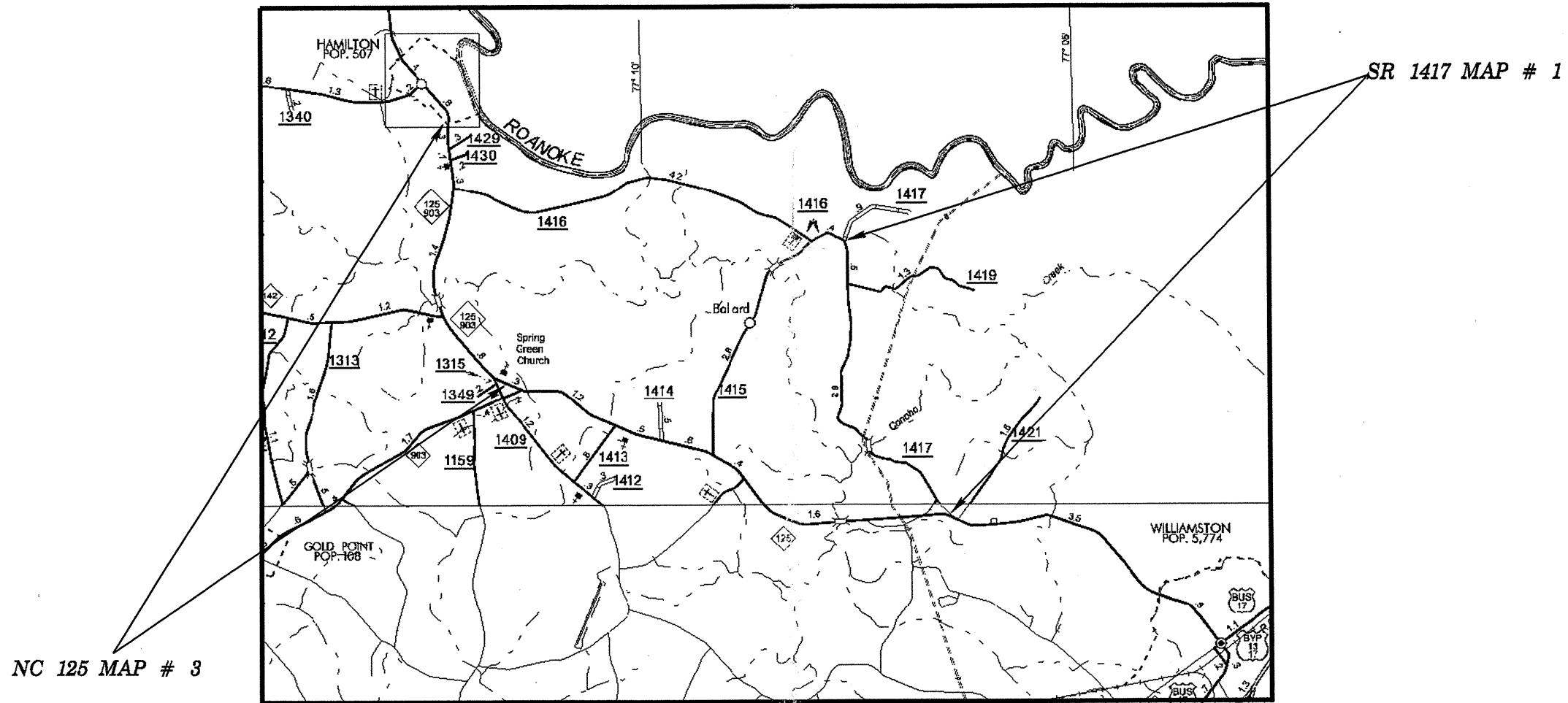
**CONTRACT NO.:**



STATE OF NORTH CAROLINA  
 DIVISION OF HIGHWAYS  
**MARTIN COUNTY**

STATE	STATE PROJECT REFERENCE NO.	SHEET NO.	TOTAL SHEETS
N.C.	1C.058054, ETC.	1	
STATE PROJ. NO.	F.A. PROJ. NO.	DESCRIPTION	

LOCATION: MAP # 3 NC 125 FROM NC 903 TO HAMILTON CL /MAP #1 SR 1417 FROM NC 125 TO SR 1416  
 TYPE OF WORK: RESURFACING AND PAVEMENT MARKINGS



NC 125 MAP # 3

SR 1417 MAP # 1

NOT TO SCALE

**PROJECT LENGTH**

MAP#1 WBS# 1CR.058054 = 3.7 MILES  
 MAP#3 WBS# 1CR.10581.23 = 3.4 MILES

Prepared In the Office of:

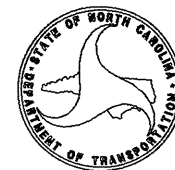
**DIVISION OF HIGHWAYS**

2012 STANDARD SPECIFICATIONS

W.B. HOBBS, P.E.  
 DIVISION PROJECT MANAGER

C.E. SLACHTA  
 DIVISION PROPOSALS ENGINEER

DIVISION OF HIGHWAYS  
 STATE OF NORTH CAROLINA



28-OCT-2011 12:21  
 S:\Contracts\Resurfacing Projects\Division\martin\Plan Sheets\NC.058054, ETC. Title & Typical.dgn  
 P:\porter AT CSD237485

STATE	STATE PROJECT REFERENCE NO.	SHEET NO.	TOTAL SHEETS
N.C.	1C.058054, ETC.	2	
STATE PROJ. NO.	F.A. PROJ. NO.	DESCRIPTION	

STATE OF NORTH CAROLINA  
DIVISION OF HIGHWAYS

**MARTIN COUNTY**

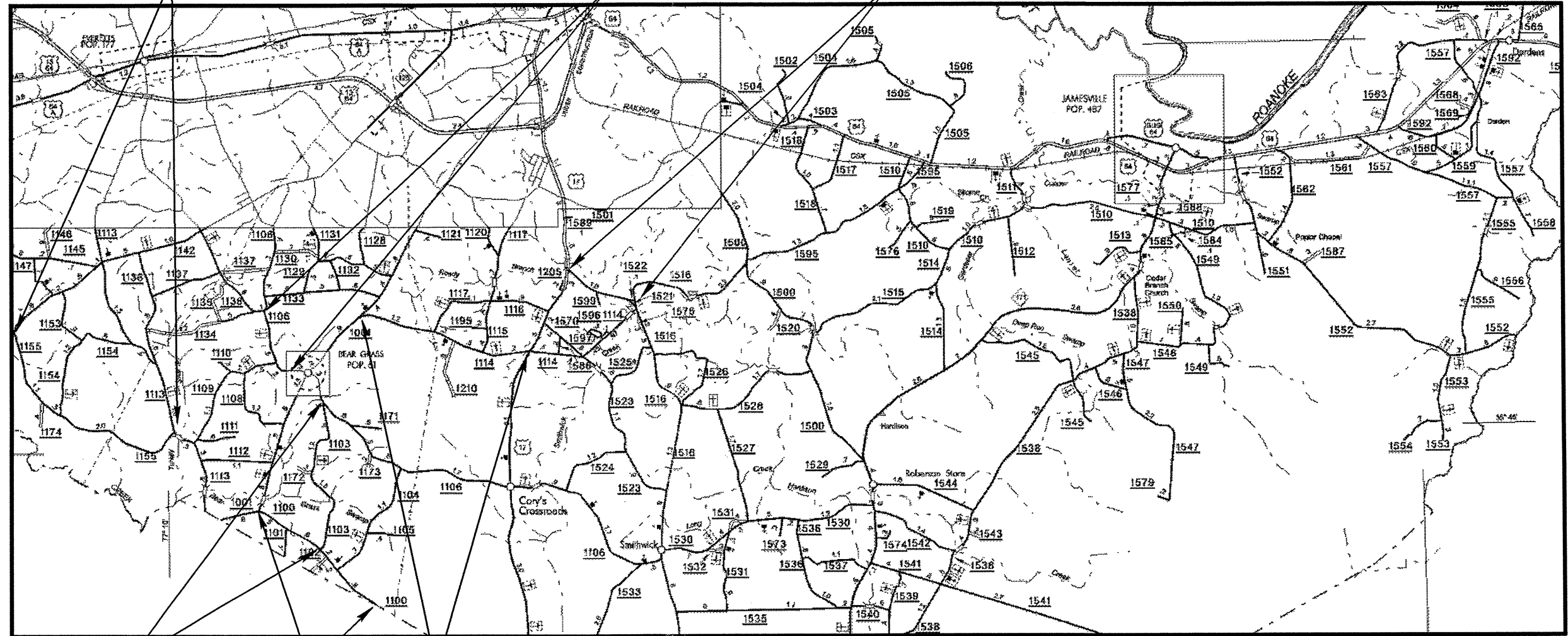
LOCATION: MAP #10 SR 1103 FROM SR 1106 TO SR 1100 MAP #2 SR 1100 FROM SR 1001 TO BEAUFORT COUNTY LINE  
MAP #5 SR 1155 FROM SR 1113 TO SR 1142 MAP #6 SR 1106 FROM BEAR GRASS CL TO SR 1134  
MAP #7 SR 1521 FROM US 17 TO SR 1516 / MAP #8 SR 1114 FROM US 17 TO SR 1001

TYPE OF WORK: WIDENING, RESURFACING AND PAVEMENT MARKINGS

SR 1155 MAP # 5

SR 1106 MAP # 6

SR 1521 MAP # 7



SR 1103 MAP # 10

SR 1100 MAP # 2

SR 1114 MAP # 8

**CONTRACT NO.:**

**WBS NO.:** 1C.058054, ETC.

NOT TO SCALE

PROJECT LENGTH

- MAP#2 WBS# 1C.058055 = 2.3 MILES
- MAP#5 WBS# 1CR.20581.39 = 3.48 MILES
- MAP#6 WBS# 1CR.20581.40 = 1.03 MILES
- MAP#7 WBS# 1CR.20581.41 = 1.22 MILES
- MAP#8 WBS# 1CR.20581.42 = 2.7 MILES
- MAP#10 WBS# 1C.058057 = 2.5 MILES

Prepared in the Office of:  
**DIVISION OF HIGHWAYS**

---

2012 STANDARD SPECIFICATIONS

---

W.B. HOBBS, P.E.  
DIVISION PROJECT MANAGER

---

C.E. SLACHTA  
DIVISION PROPOSALS ENGINEER

DIVISION OF HIGHWAYS  
STATE OF NORTH CAROLINA

28-OCT-2011 12:19 S:\Contractors\Contractors\Resurfacing Projects\Division\martin\Plan Sheets\1C.058054, ETC. Title & Typicals.dgn P:\porter AT CSD237485

28-OCT-2011 12:20  
 S:\Contractors\Resurfacing Projects\Division\marlin\Plan Sheets\IC.058054, ETC. Title & Typical.dgn  
 09/08/99  
 1001101

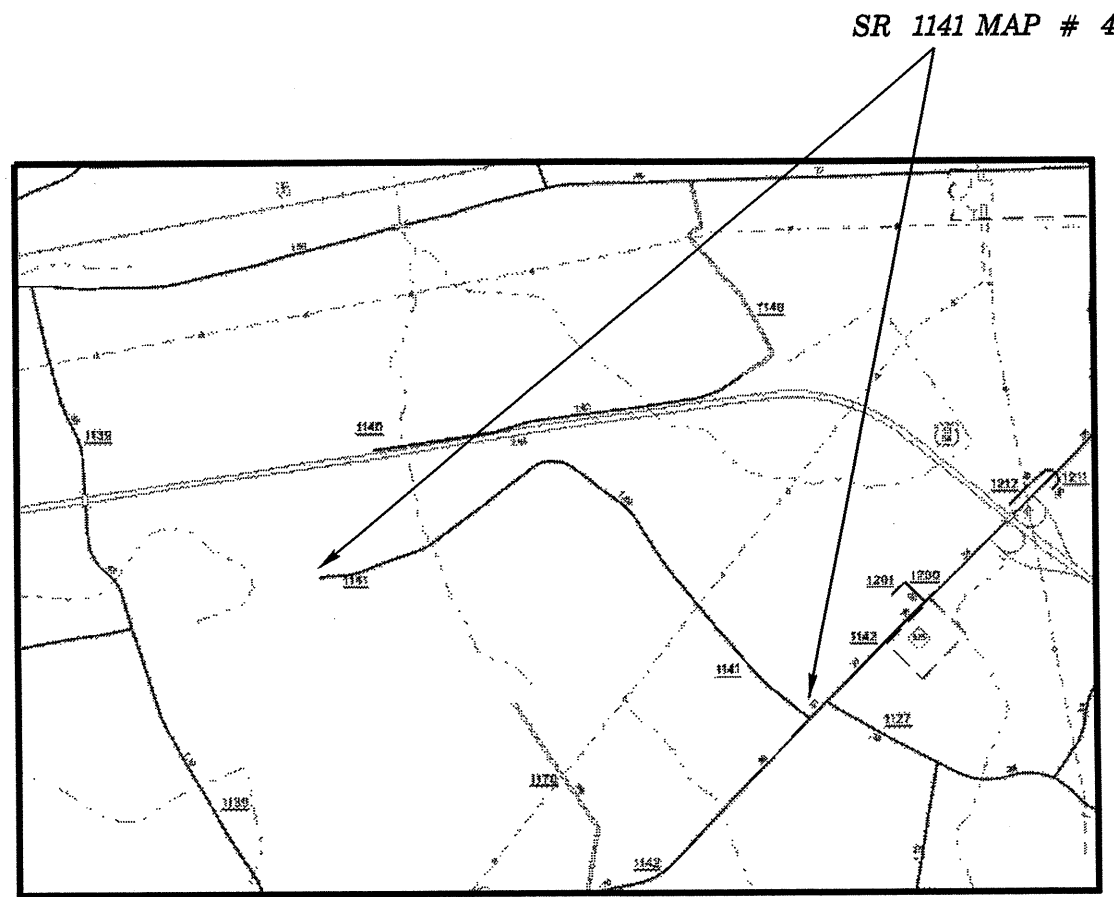
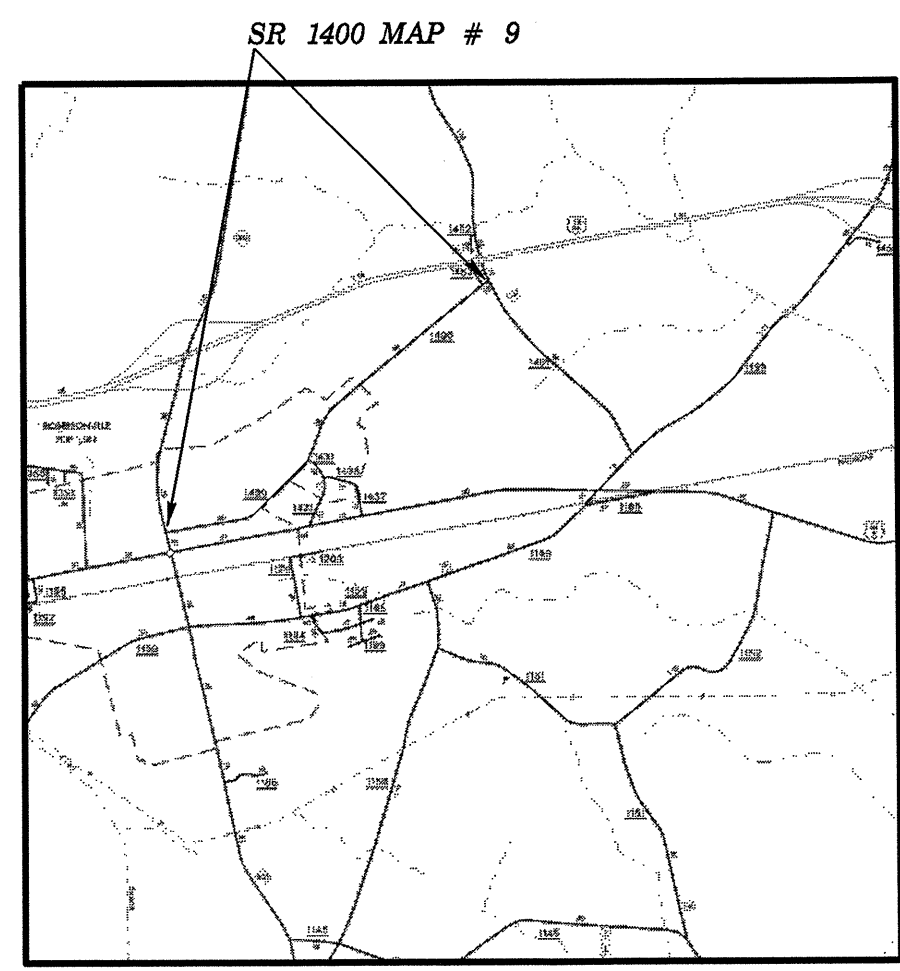
**CONTRACT NO.:** **WBS NO.: IC.058054, ETC.**



STATE OF NORTH CAROLINA  
 DIVISION OF HIGHWAYS  
**MARTIN COUNTY**

STATE	STATE PROJECT REFERENCE NO.	SHEET NO.	TOTAL SHEETS
N.C.	1C.058054, ETC.	3	
STATE PROJ. NO.	F.A. PROJ. NO.	DESCRIPTION	

LOCATION: MAP #9 SR 1400 FROM ROBERSONVILLE CL TO SR 1401 / MAP #4 SR 1141 FROM SR 1142 TO DEAD END  
 TYPE OF WORK: RESURFACING AND PAVEMENT MARKINGS



NOT TO SCALE

**PROJECT LENGTH**  
 MAP#4 WBS# 1CR.20581.38 = 1.92 MILES  
 MAP#9 WBS# 1CR.20581.43 = .65 MILES

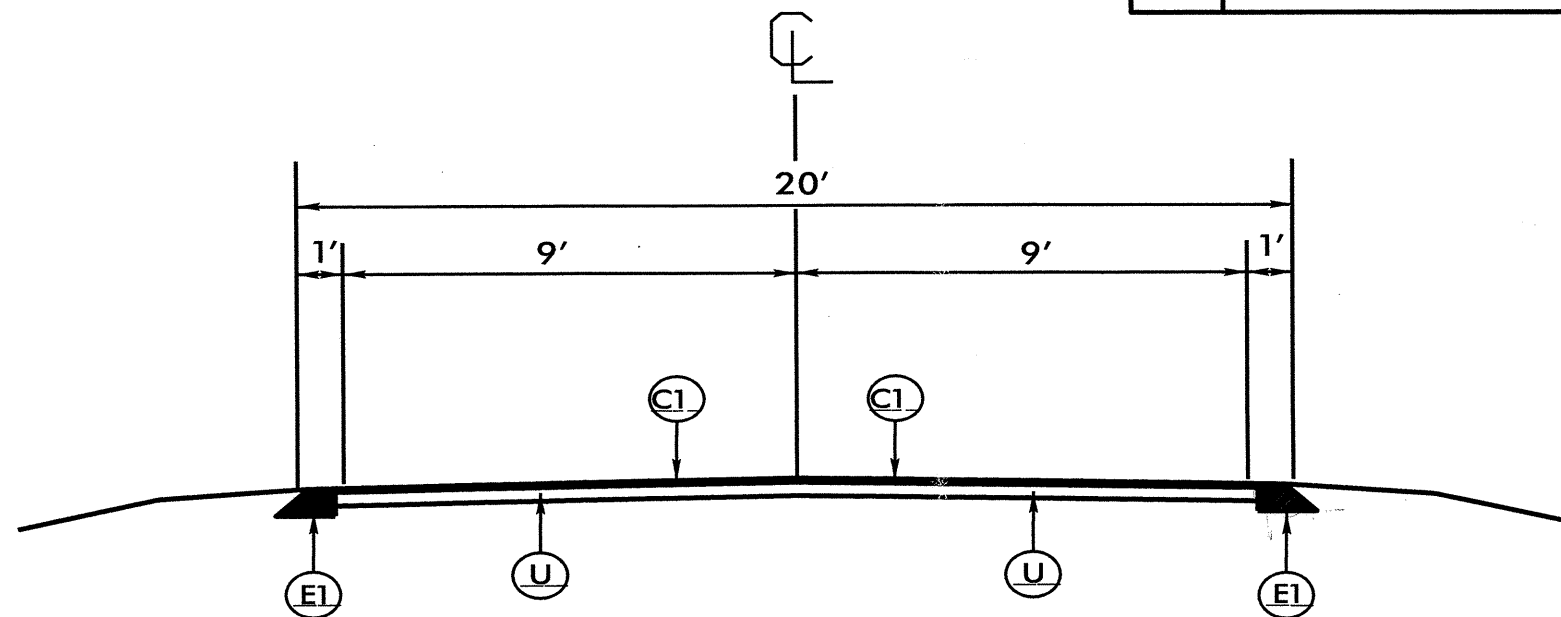
Prepared in the Office of:  
**DIVISION OF HIGHWAYS**  
 2012 STANDARD SPECIFICATIONS  
 W.B. HOBBS, P.E.  
 DIVISION PROJECT MANAGER  
 C.E. SLACHTA  
 DIVISION PROPOSALS ENGINEER

**DIVISION OF HIGHWAYS**  
 STATE OF NORTH CAROLINA

- NOTES:
1. ALL PAVED S.R. ROADS TO BE RESURFACED TO THE ENDS OF THE RADII OR AS DIRECTED BY THE ENGINEER
  2. EDGES, PAVEMENT WIDENING, INTERSECTIONS, AND BRIDGE FLARES ARE INCLUDED IN THE TABLE OF QUANTITIES
  3. PAVEMENT EDGE SLOPES ARE 1:1 UNLESS SHOWN OTHERWISE
  4. SHOULDERS AND DITCHES ARE TO BE CONSTRUCTED BY OTHERS

PROJECT REFERENCE NO.	SHEET NO.
1C.058054, ETC.	4

PAVEMENT SCHEDULE	
C1	PROP. APPROX. 1.5" ASPHALT CONCRETE SURFACE COURSE TYPE SF9.5A, AT AN AVERAGE RATE OF 165 LBS. PER SQ.YD.
E1	PROP. APPROX. 5.5" ASPHALT CONCRETE BASE COURSE TYPE B25.0B, AT AN AVERAGE RATE OF 627 LBS. PER SQ.YD.
U	EXISTING PAVEMENT.



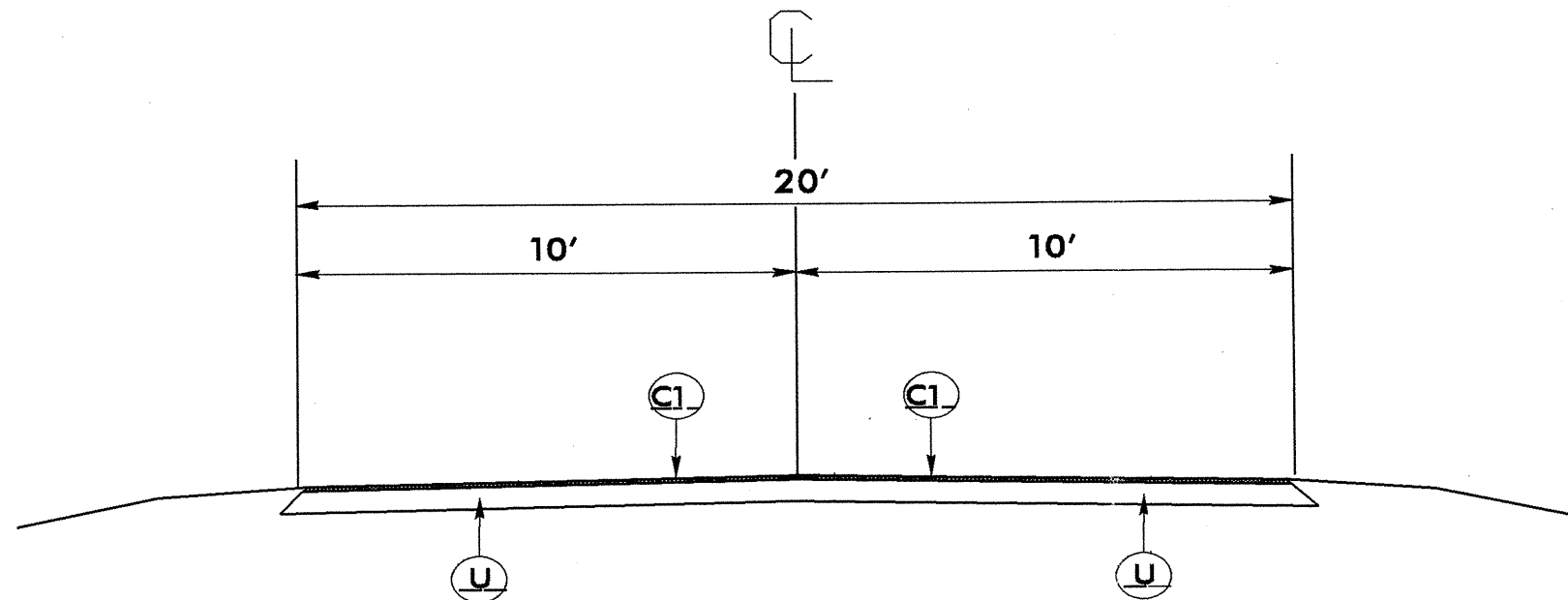
**TYPICAL SECTION #1**  
USE WITH MAP 2

NOTES:

1. ALL PAVED S.R. ROADS TO BE RESURFACED TO THE ENDS OF THE RADII OR AS DIRECTED BY THE ENGINEER
2. EDGES, PAVEMENT WIDENING, INTERSECTIONS, AND BRIDGE FLARES ARE INCLUDED IN THE TABLE OF QUANTITIES
3. PAVEMENT EDGE SLOPES ARE 1:1 UNLESS SHOWN OTHERWISE
4. SHOULDERS AND DITCHES ARE TO BE CONSTRUCTED BY OTHERS

PROJECT REFERENCE NO.	SHEET NO.
1C.058054, ETC.	5

PAVEMENT SCHEDULE	
C1	PROP. APPROX. 1.5" ASPHALT CONCRETE SURFACE COURSE TYPE SF9.5A, AT AN AVERAGE RATE OF 165 LBS. PER SQ.YD.
U	EXISTING PAVEMENT.



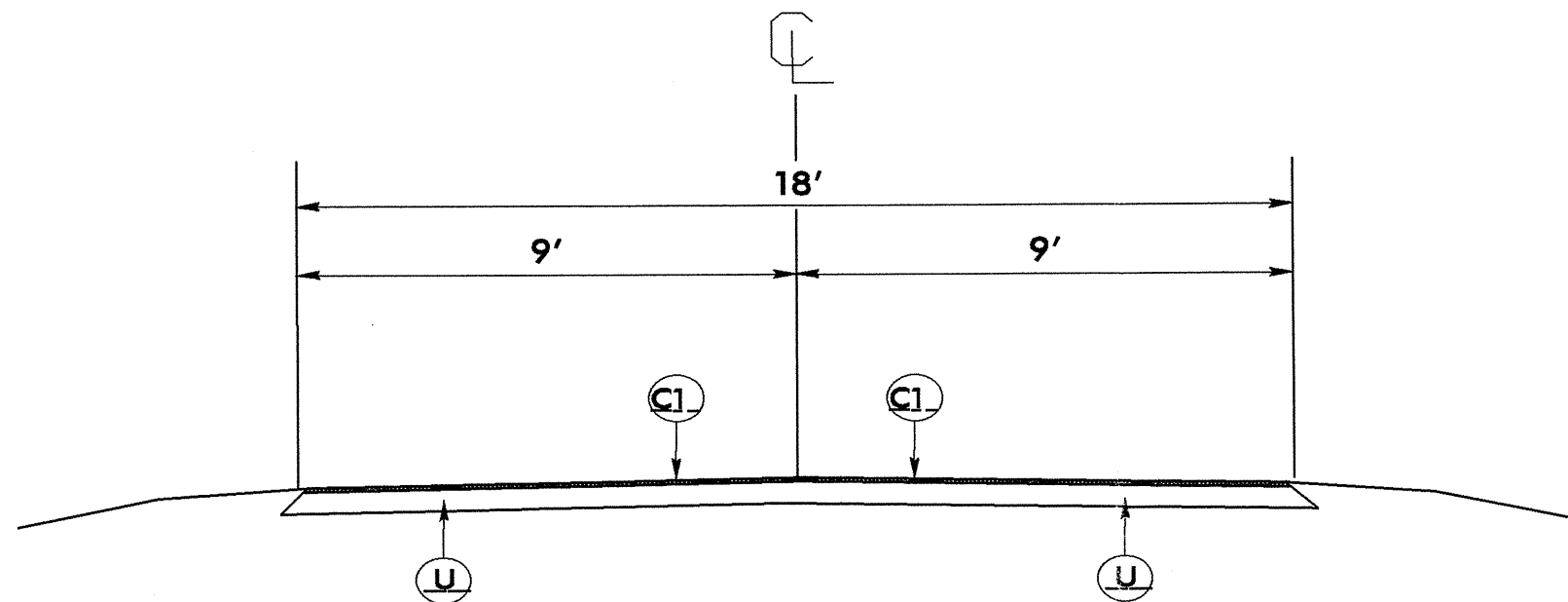
**TYPICAL SECTION #2**  
 USE WITH MAP 1, 4, 7, 8, 9 & 10

NOTES:

1. ALL PAVED S.R. ROADS TO BE RESURFACED TO THE ENDS OF THE RADII OR AS DIRECTED BY THE ENGINEER
2. EDGES, PAVEMENT WIDENING, INTERSECTIONS, AND BRIDGE FLARES ARE INCLUDED IN THE TABLE OF QUANTITIES
3. PAVEMENT EDGE SLOPES ARE 1:1 UNLESS SHOWN OTHERWISE
4. SHOULDERS AND DITCHES ARE TO BE CONSTRUCTED BY OTHERS

PROJECT REFERENCE NO.	SHEET NO.
1C.058054, ETC.	6

PAVEMENT SCHEDULE	
C1	PROP. APPROX. 1.5" ASPHALT CONCRETE SURFACE COURSE TYPE SF9.5A, AT AN AVERAGE RATE OF 166 LBS. PER SQ.YD.
U	EXISTING PAVEMENT.



***TYPICAL SECTION #3***

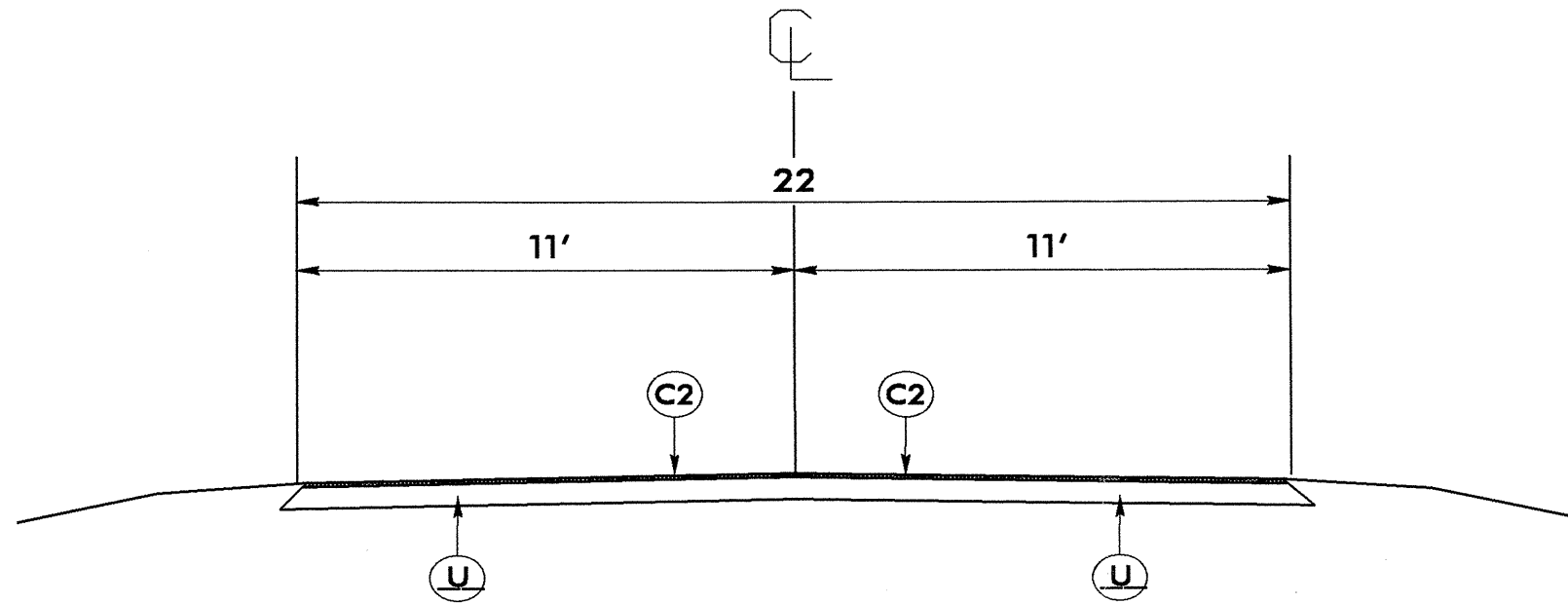
USE WITH MAP 5 & 6

NOTES:

1. ALL PAVED S.R. ROADS TO BE RESURFACED TO THE ENDS OF THE RADII OR AS DIRECTED BY THE ENGINEER
2. EDGES, PAVEMENT WIDENING, INTERSECTIONS, AND BRIDGE FLARES ARE INCLUDED IN THE TABLE OF QUANTITIES
3. PAVEMENT EDGE SLOPES ARE 1:1 UNLESS SHOWN OTHERWISE
4. SHOULDERS AND DITCHES ARE TO BE CONSTRUCTED BY OTHERS

PROJECT REFERENCE NO.	SHEET NO.
1C.058054, ETC.	7

PAVEMENT SCHEDULE	
C2	PROP. APPROX. 1.5" ASPHALT CONCRETE SURFACE COURSE TYPE S9.5B, AT AN AVERAGE RATE OF 168 LBS. PER SQ.YD.
U	EXISTING PAVEMENT.



**TYPICAL SECTION #4**

USE WITH MAP 3

PROJECT NO.	SHEET NO.	TOTAL NO.
1C.058054, ETC.	8	

## SUMMARY OF QUANTITIES

PROJECT	COUNTY	MAP	ROUTE	DESCRIPTION	TYP	FINAL SURFACE TESTING REQUIRED	LENGTH	WIDTH	BASE COURSE, B25.0B	SURFACE COURSE, S9.5B	SURFACE COURSE, SF9.5A	ASPHALT BINDER FOR PLANT MIX
NO		NO			NO		MI	FT	TONS	TONS	TONS	TONS
1C.058054	Martin	1	SR 1417	FROM NC 125 TO SR 1416	2	NO	3.7	20			3,964	266
1C.058055	Martin	2	SR 1100	FROM SR 1001 TO BEAUFORT COUNTY LINE	1	NO	2.3	18	1,260		2,480	222
1CR.10581.23	Martin	3	NC 125	FROM NC 903 TO HAMILTON CITY LIMIT	4	NO	3.4	22		4,078		245
1CR.20581.38	Martin	4	SR 1141	FROM SR 1142 TO DEAD END	2	NO	1.92	20			2,057	138
1CR.20581.39	Martin	5	SR 1155	FROM SR 1113 TO SR 1142	3	NO	3.48	18			3,358	225
1CR.20581.40	Martin	6	SR 1106	FROM BEAR GRASS CITY LIMIT TO SR 1134	3	NO	1.03	18			994	67
1CR.20581.41	Martin	7	SR 1521	FROM FROM US 17 TO SR 1516	2	NO	1.22	20			1,307	88
1CR.20581.42	Martin	8	SR 1114	FROM US 17 TO SR 1001	2	NO	2.7	20			2,893	194
1CR.20581.43	Martin	9	SR 1400	FROM ROBERSONVILLE CITY LIMIT TO SR 1401	2	NO	0.65	20			696	47
1C.058057	Martin	10	SR 1103	FROM SR 1106 TO SR 1100	2	NO	2.5	20			2,679	179
<b>GRAND TOTAL</b>							<b>22.9</b>		<b>1,260</b>	<b>4,078</b>	<b>20,428</b>	<b>1,671</b>

## THERMOPLASTIC AND PAINT QUANTITIES

PROJECT	COUNTY	MAP	ROUTE	DESCRIPTION	LENGTH	WIDTH	TEMPORARY TRAFFIC CONTROL	4" WHITE PAINT	4" YELLOW PAINT
NO		NO					LS	LF	LF
1C.058054	Martin	1	SR 1417	FROM NC 125 TO SR 1416	3.7	20	*	79,624	48,840
1C.058055	Martin	2	SR 1100	FROM SR1001 TO BEAUFORT COUNTY LINE	2.3	18	*	49,496	30,360
1CR.10581.23	Martin	3	NC 125	FROM NC 903 TO HAMILTON C/L	3.4	22	*	73,168	44,880
1CR.20581.38	Martin	4	SR 1141	FROM SR 1142 TO DEAD END	1.92	20	*	41,318	25,344
1CR.20581.39	Martin	5	SR 1155	FROM 1113 TO SR 1142	3.48	18	*	74,890	45,936
1CR.20581.40	Martin	6	SR 1106	FROM BEAR GRASS C/L TO SR 1134	1.03	18	*	22,166	13,596
1CR.20581.41	Martin	7	SR 1521	FROM FROM US 17 TO SR 1516	1.22	20	*	26,254	16,104
1CR.20581.42	Martin	8	SR 1114	FROM US 17 TO SR 1001	2.7	20	*	58,104	35,640
1CR.20581.43	Martin	9	SR 1400	FROM ROBERSONVILLE C/L TO SR 1401	0.65	20	*	13,988	8,580
1C.058057	Martin	10	SR 1103	FROM SR 1106 TO SR 1100	2.5	20	*	53,800	33,000
<b>GRAND TOTAL</b>					<b>22.9</b>		<b>1</b>	<b>492,808</b>	<b>302,280</b>
									<b>795,088</b>