

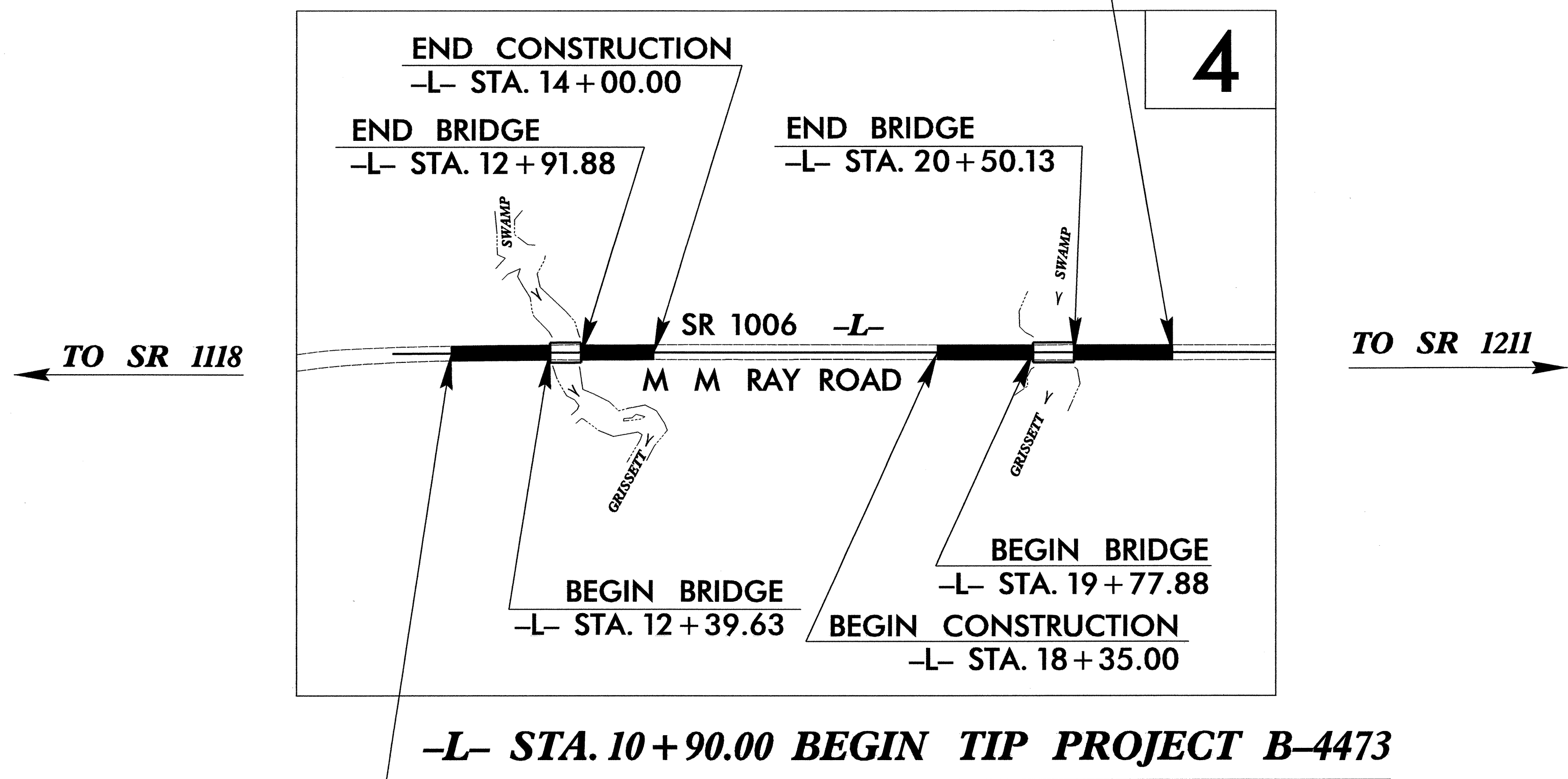
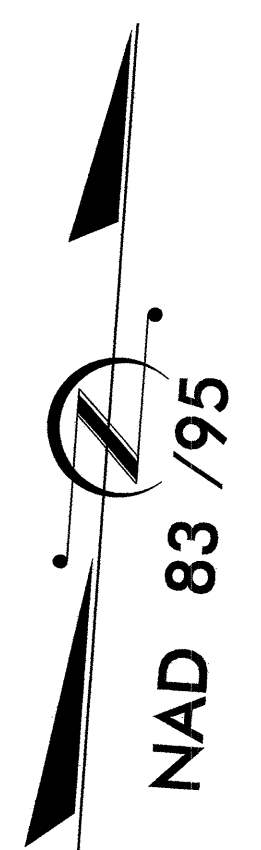
STATE	STATE PROJECT REFERENCE NO.	SHEET NO.	TOTAL SHEETS
N.C.	B-4473	EC-1	
STATE PROJ. NO.	F.A. PROJ. NO.	DESCRIPTION	

TIP PROJECT: B-4473

STATE OF NORTH CAROLINA
 DIVISION OF HIGHWAYS
 PLAN FOR PROPOSED
 HIGHWAY EROSION CONTROL
COLUMBUS COUNTY

LOCATION: BRIDGES 76 AND 78 OVER GRISSETT SWAMP ON SR 1006
TYPE OF WORK: GRADING, DRAINAGE, STRUCTURES, AND PAVING

-L- STA. 21+95.00 END TIP PROJECT B-4473



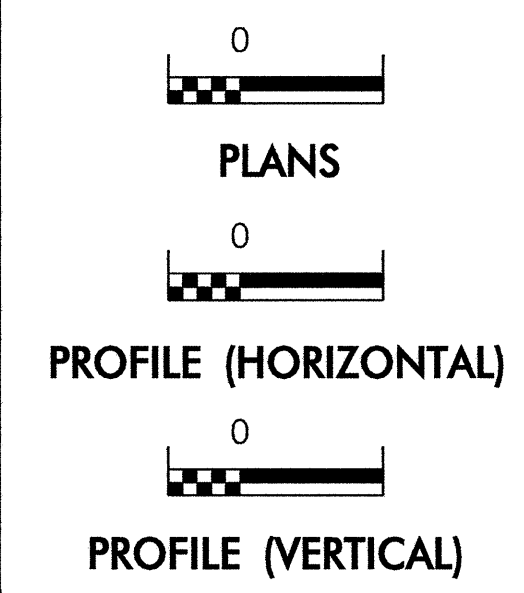
-L- STA. 10+90.00 BEGIN TIP PROJECT B-4473

EROSION AND SEDIMENT CONTROL MEASURES

Std. #	Description	Symbol
1630.03	Temporary Silt Ditch	TD
1630.05	Temporary Diversion	TD
1605.01	Temporary Silt Fence	III III III
1606.01	Special Sediment Control Fence	△△△△△
1622.01	Temporary Berms and Slope Drains	T
	Silt Basin Type B	□
1633.01	Temporary Rock Silt Check Type-A	⊗
	Temporary Rock Silt Check Type-A with Matting and Polyacrylamide (PAM)	⊗
	Temporary Rock Silt Check Type-B	▶
	Wattle / Coir Fiber Wattle	⌒
	Wattle / Coir Fiber Wattle with Polyacrylamide (PAM)	⌒
1634.01	Temporary Rock Sediment Dam Type-A	⊗
1634.02	Temporary Rock Sediment Dam Type-B	⊗
1635.01	Rock Pipe Inlet Sediment Trap Type-A	⌒
1635.02	Rock Pipe Inlet Sediment Trap Type-B	⌒
1630.04	Stilling Basin	□
1630.06	Special Stilling Basin	□
	Rock Inlet Sediment Trap:	
1632.01	Type A	A
1632.02	Type B	B
1632.03	Type C	C
	Skimmer Basin	□
	Tiered Skimmer Basin	□
	Infiltration Basin	□

THIS PROJECT CONTAINS EROSION CONTROL PLANS FOR CLEARING AND GRUBBING PHASE OF CONSTRUCTION.

GRAPHIC SCALE



ROADSIDE ENVIRONMENTAL UNIT
 DIVISION OF HIGHWAYS
 STATE OF NORTH CAROLINA

Prepared in the Office of:
ROADSIDE ENVIRONMENTAL UNIT
 1 South Wilmington St.
 Raleigh, NC 27611
2006 STANDARD SPECIFICATIONS

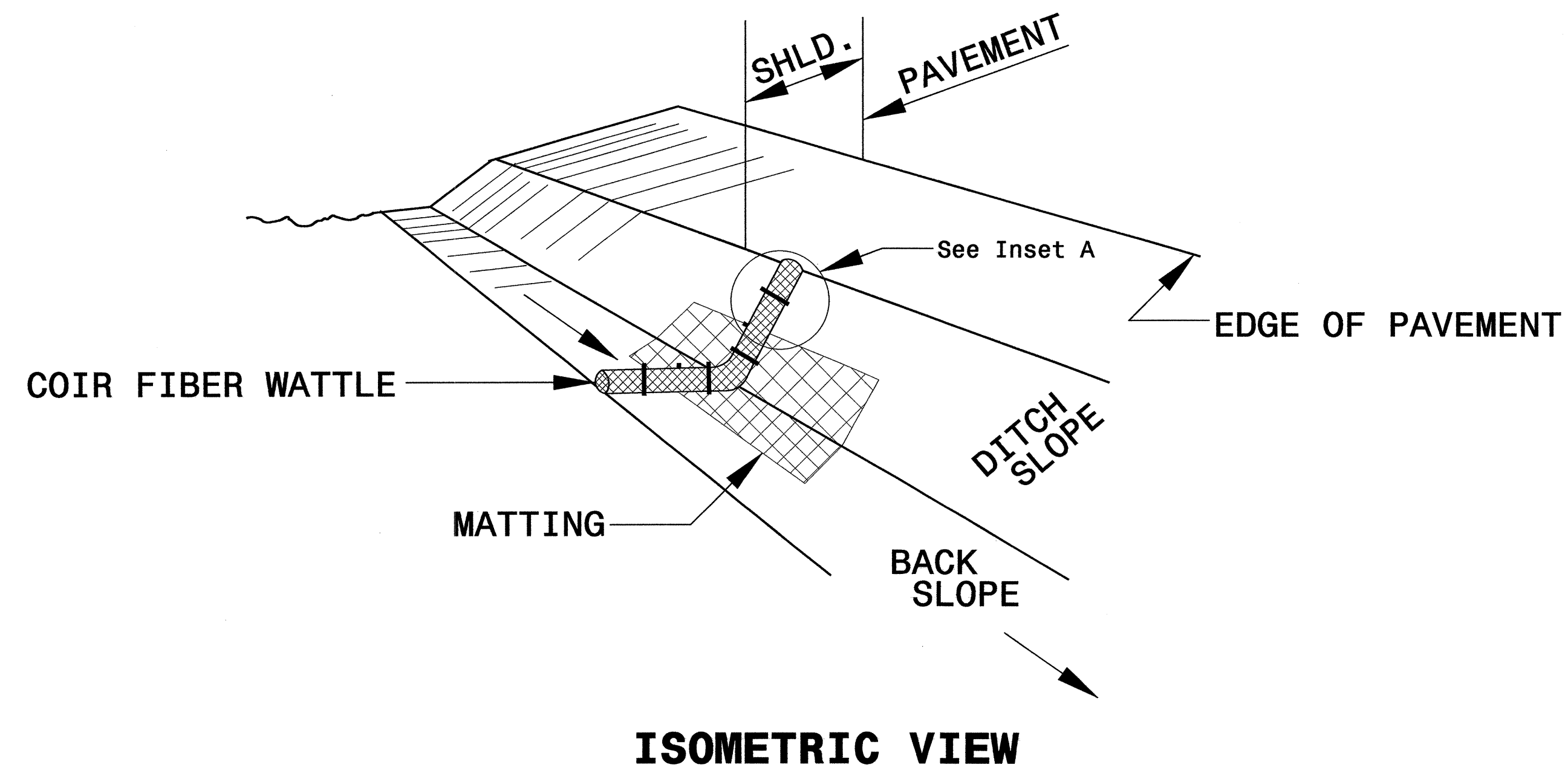
Roadway Standard Drawings
 The following roadway english standards as appear in "Roadway Standard Drawings"- Roadway Design Unit - N. C. Department of Transportation - Raleigh, N. C., dated July 18, 2006 and the latest revision thereto are applicable to this project and by reference hereby are considered a part of these plans.

1605.01 Temporary Silt Fence
 1606.01 Special Sediment Control Fence
 1607.01 Gravel Construction Entrance
 1622.01 Temporary Berms and Slope Drains
 1632.03 Rock Inlet Sediment Trap Type C

16-AUG-2011 14:58
 jege@carolina.rr.com
 ALA:RENV/279398
 b:4473-EC-tsh.dgn

PROJECT REFERENCE NO. B-4473	SHEET NO. EC-2
RW SHEET NO.	
ROADWAY DESIGN ENGINEER	HYDRAULICS ENGINEER

COIR FIBER WATTLE DETAIL



NOTES:

USE MINIMUM 12 IN. DIAMETER COIR FIBER (COCONUT FIBER) WATTLE.

USE 2 FT. WOODEN STAKES WITH A 2 IN. BY 2 IN. NOMINAL CROSS SECTION.

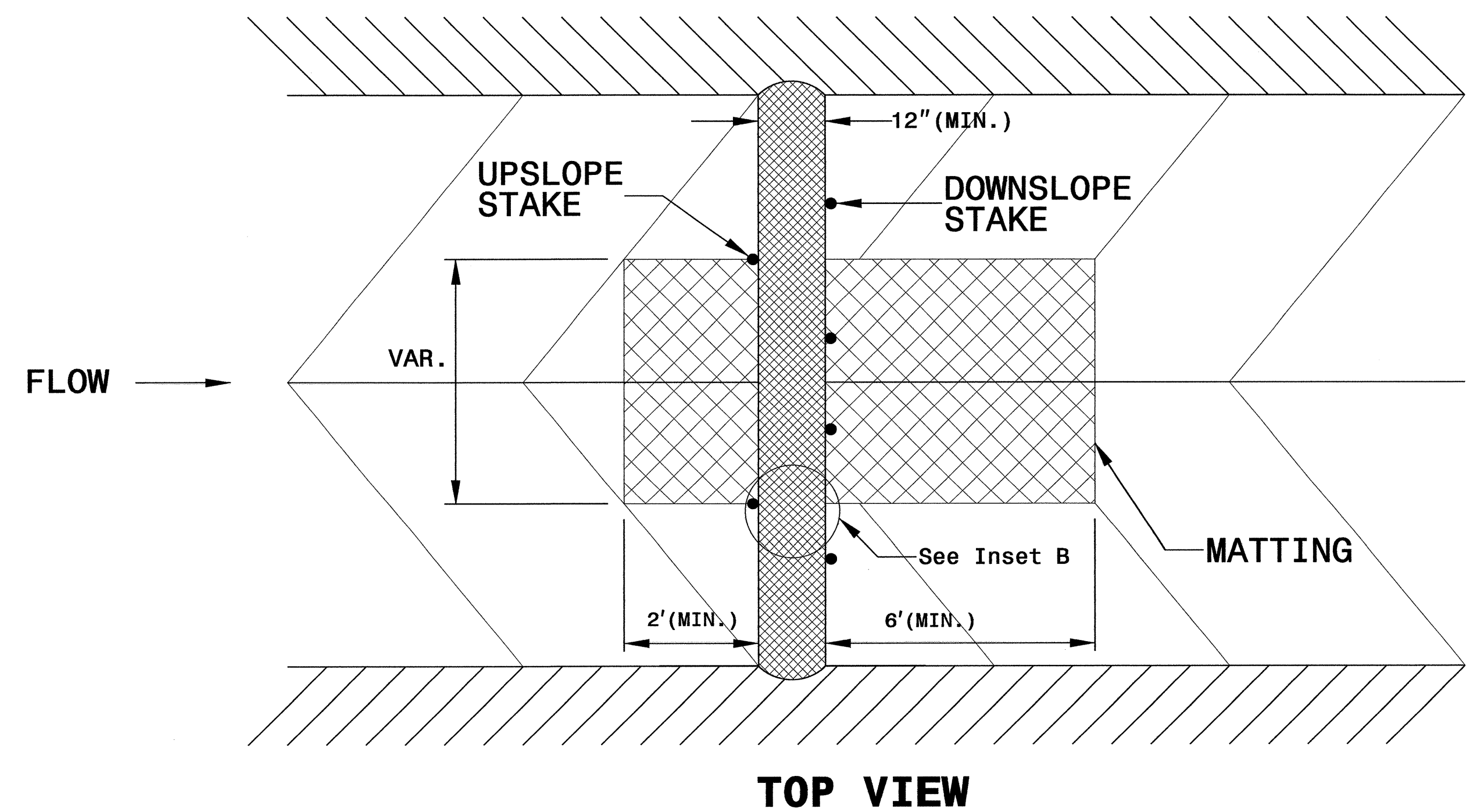
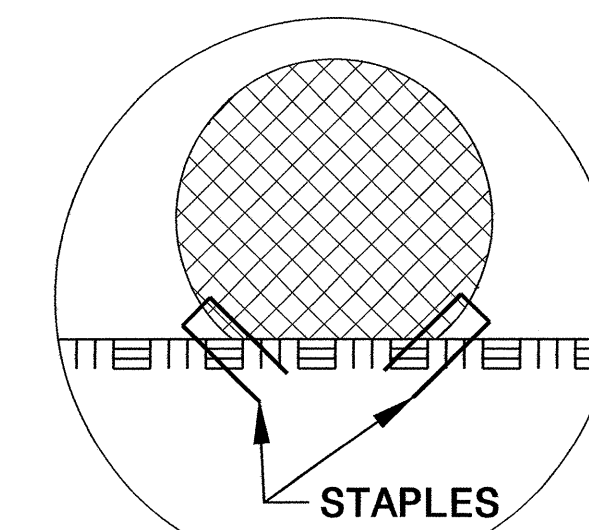
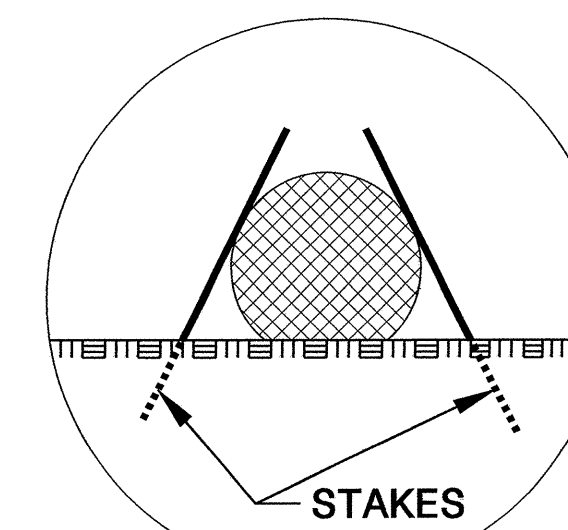
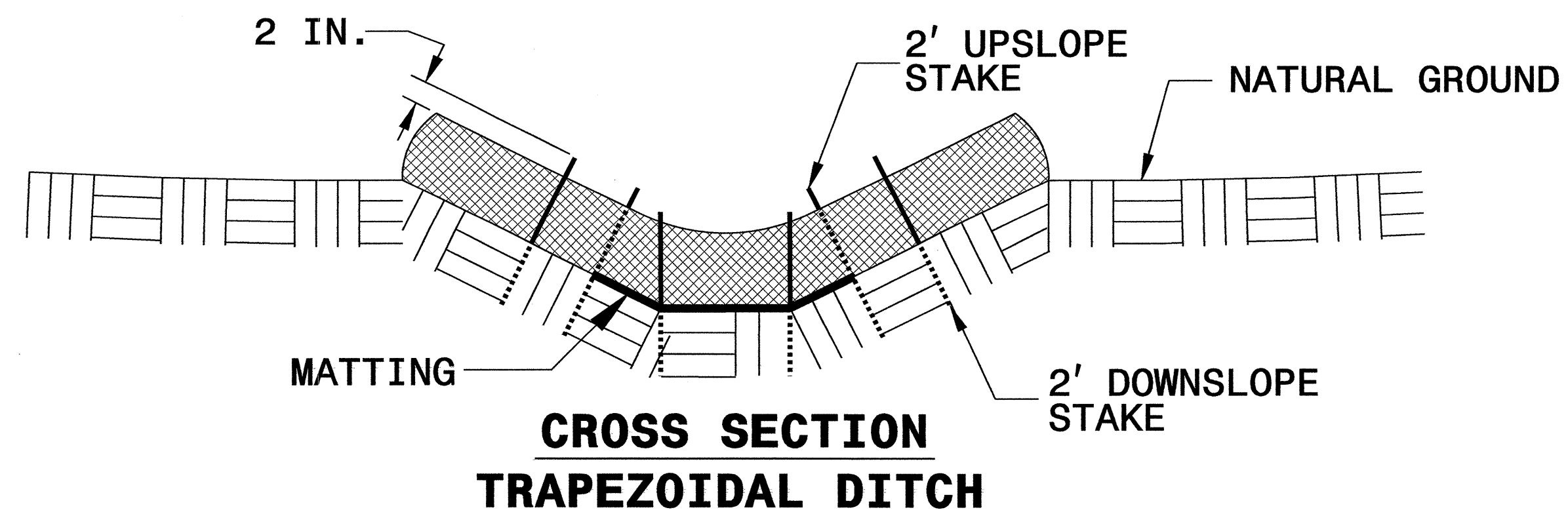
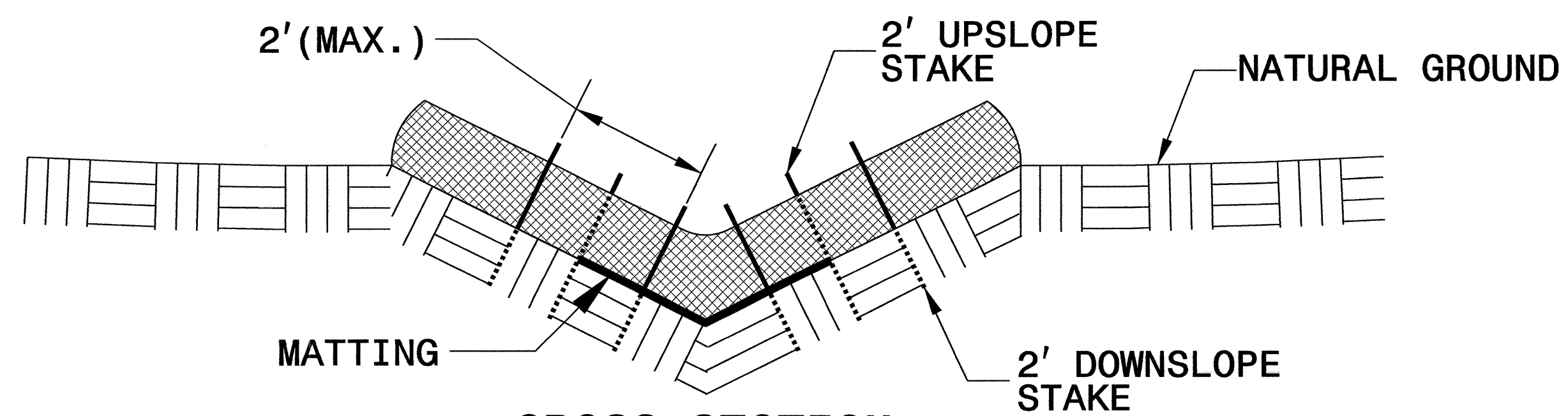
ONLY INSTALL WATTLE(S) TO A HEIGHT IN DITCH SO FLOW WILL NOT WASH AROUND WATTLE AND SCOUR DITCH SLOPES AND AS DIRECTED.

INSTALL A MINIMUM OF 2 UPSLOPE STAKES AND 4 DOWNSLOPE STAKES AT AN ANGLE TO WEDGE WATTLE TO BOTTOM OF DITCH.

PROVIDE STAPLES MADE OF 0.125 IN. DIAMETER STEEL WIRE FORMED INTO A U SHAPE NOT LESS THAN 12" IN LENGTH.

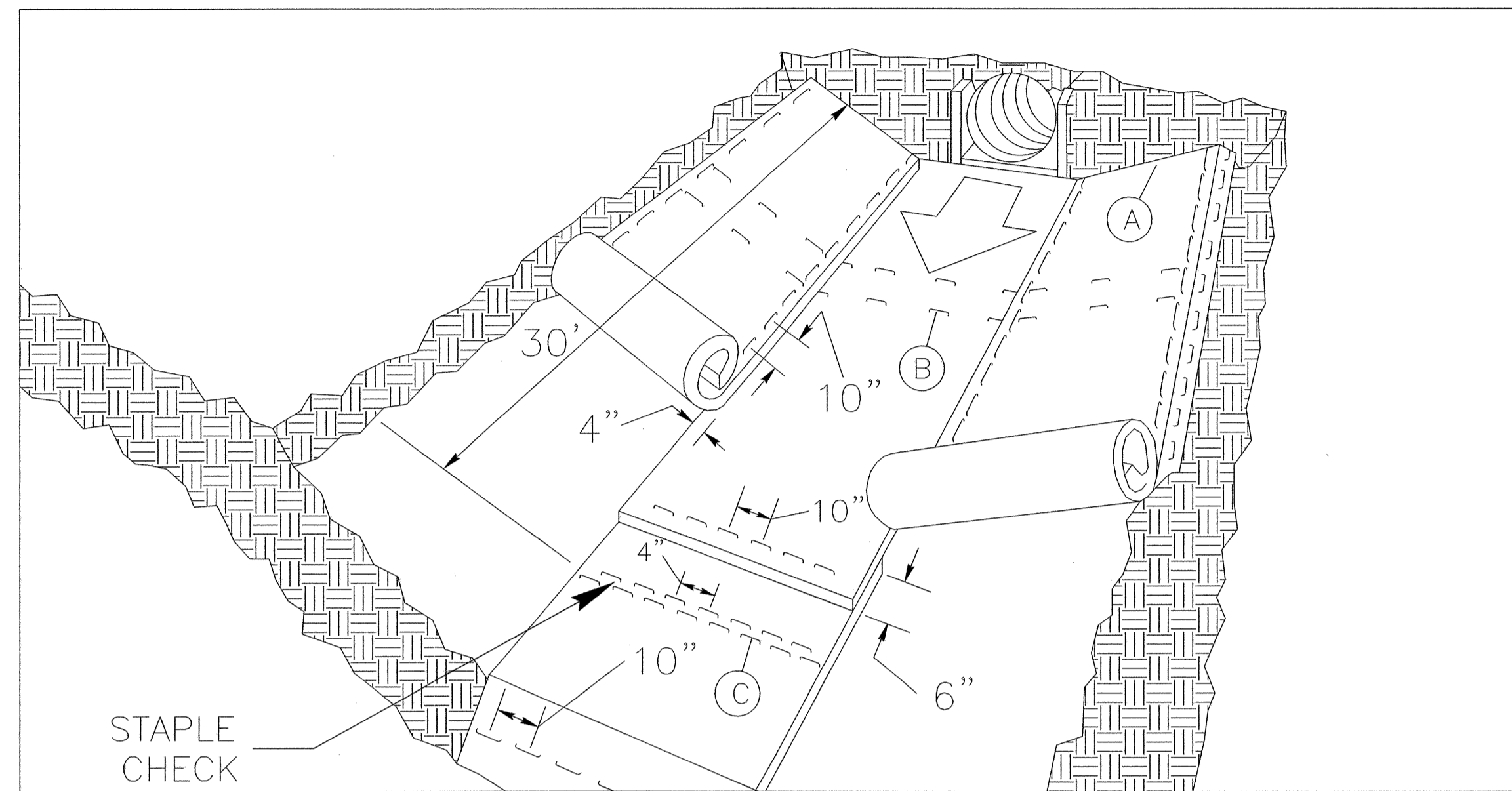
INSTALL STAPLES APPROXIMATELY EVERY 1 LINEAR FOOT ON BOTH SIDES OF WATTLE AND AT EACH END TO SECURE IT TO THE SOIL.

INSTALL MATTING IN ACCORDANCE WITH SECTION 1631 OF THE STANDARD SPECIFICATIONS.



PROJECT REFERENCE NO. B-4473	SHEET NO. EC-2A
RW SHEET NO.	
ROADWAY DESIGN ENGINEER	HYDRAULICS ENGINEER

MATTING INSTALLATION DETAIL



MATTING IN DITCHES

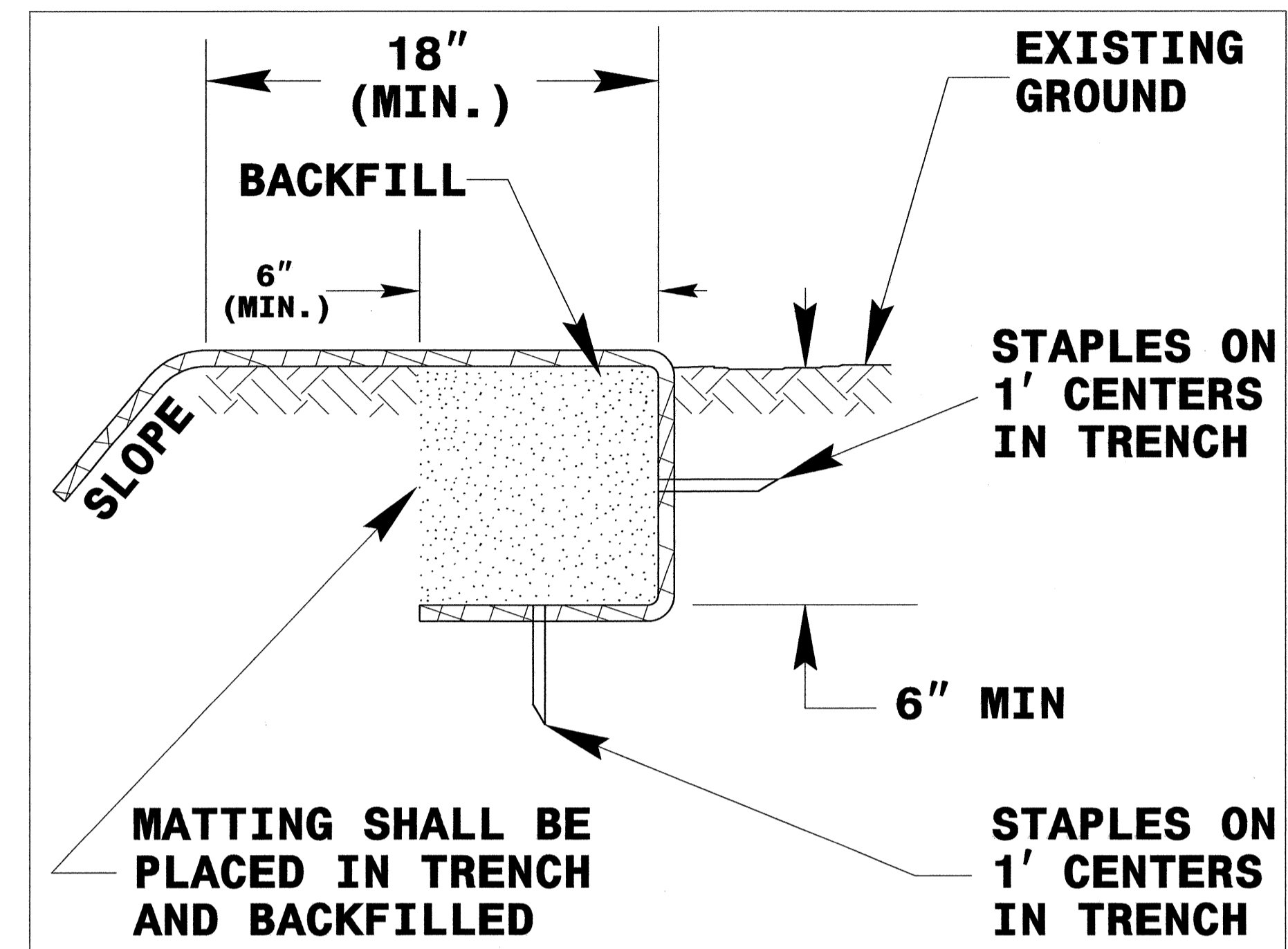
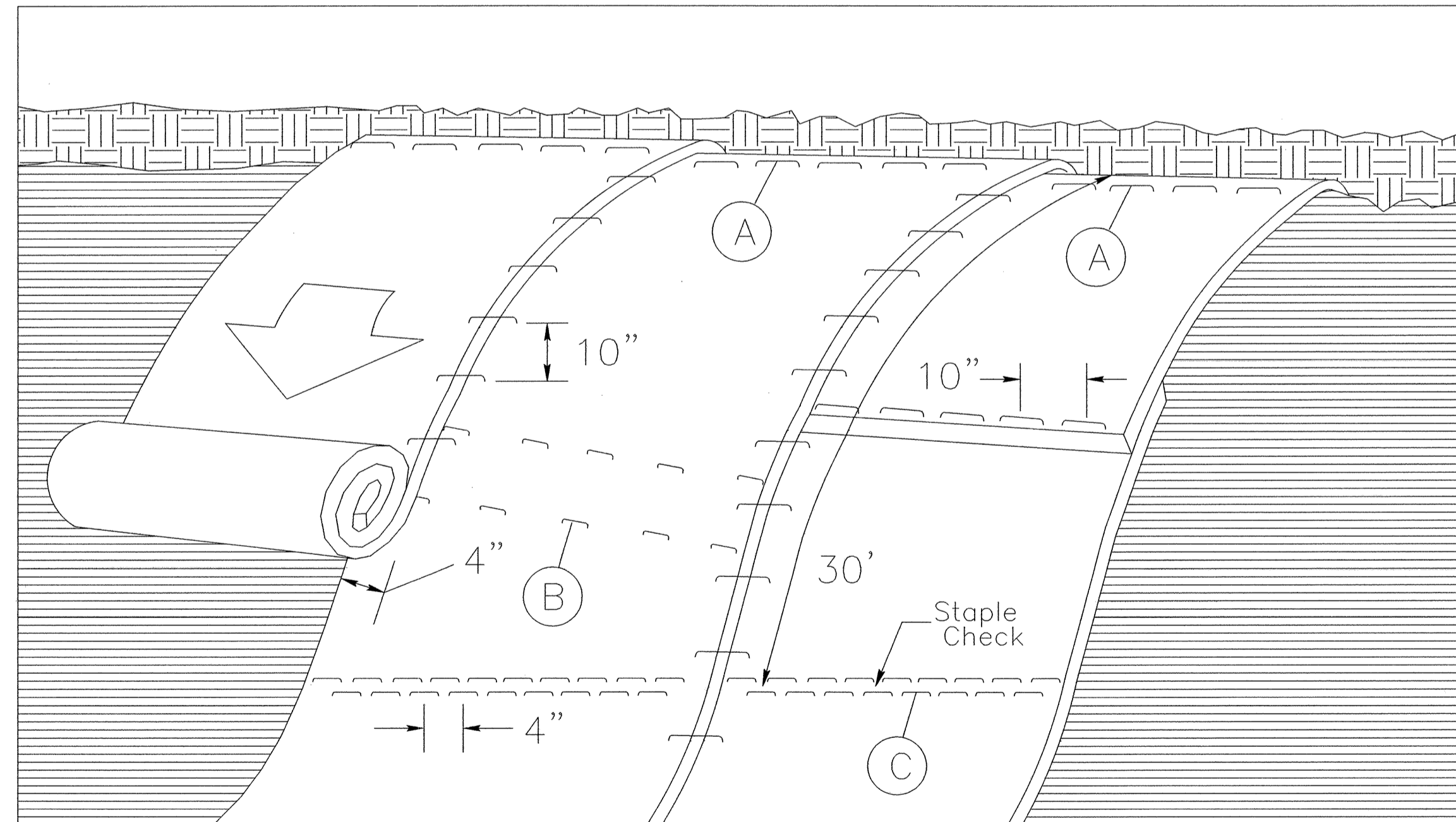


DIAGRAM (A)



MATTING ON SLOPES

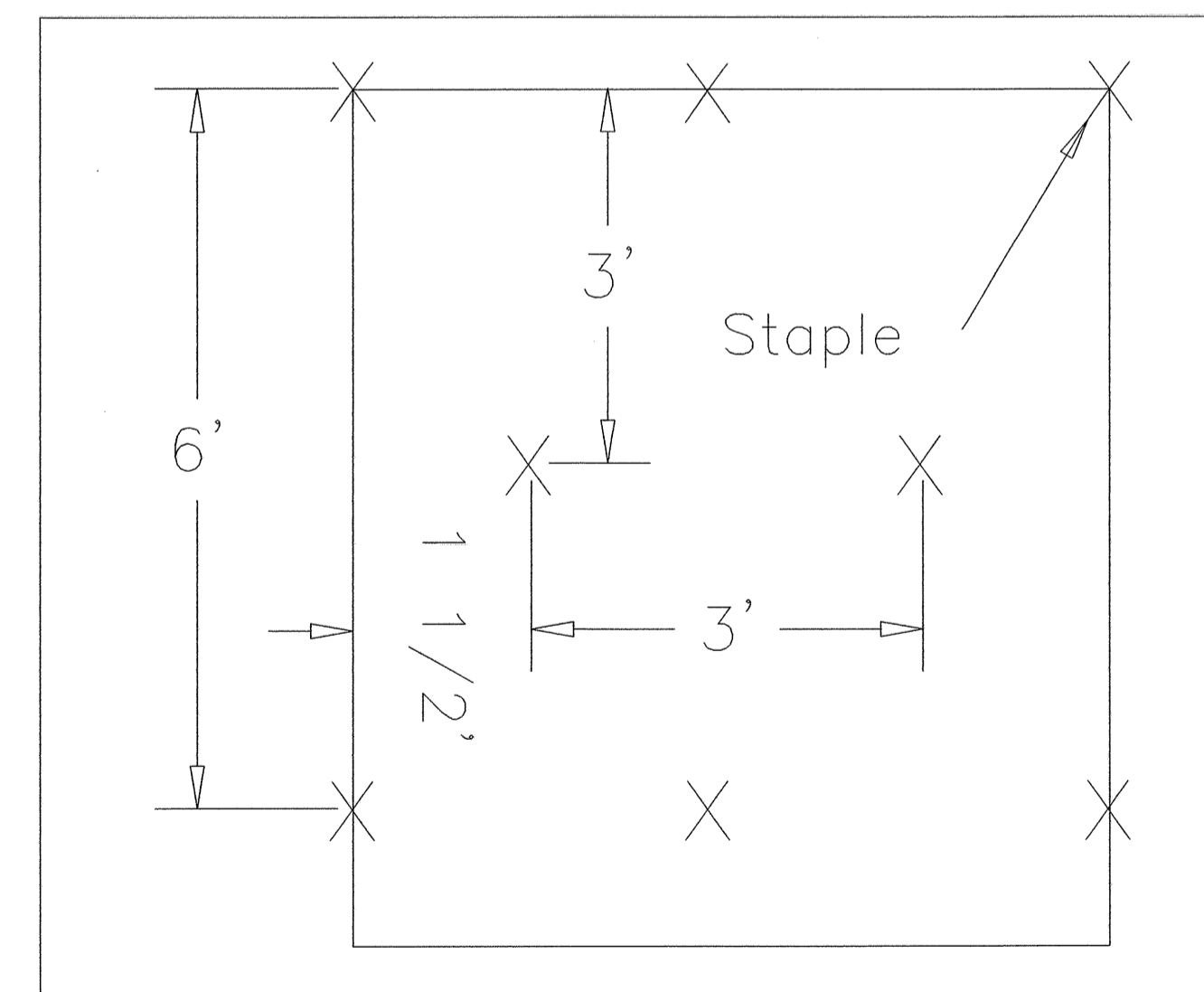


DIAGRAM (B)

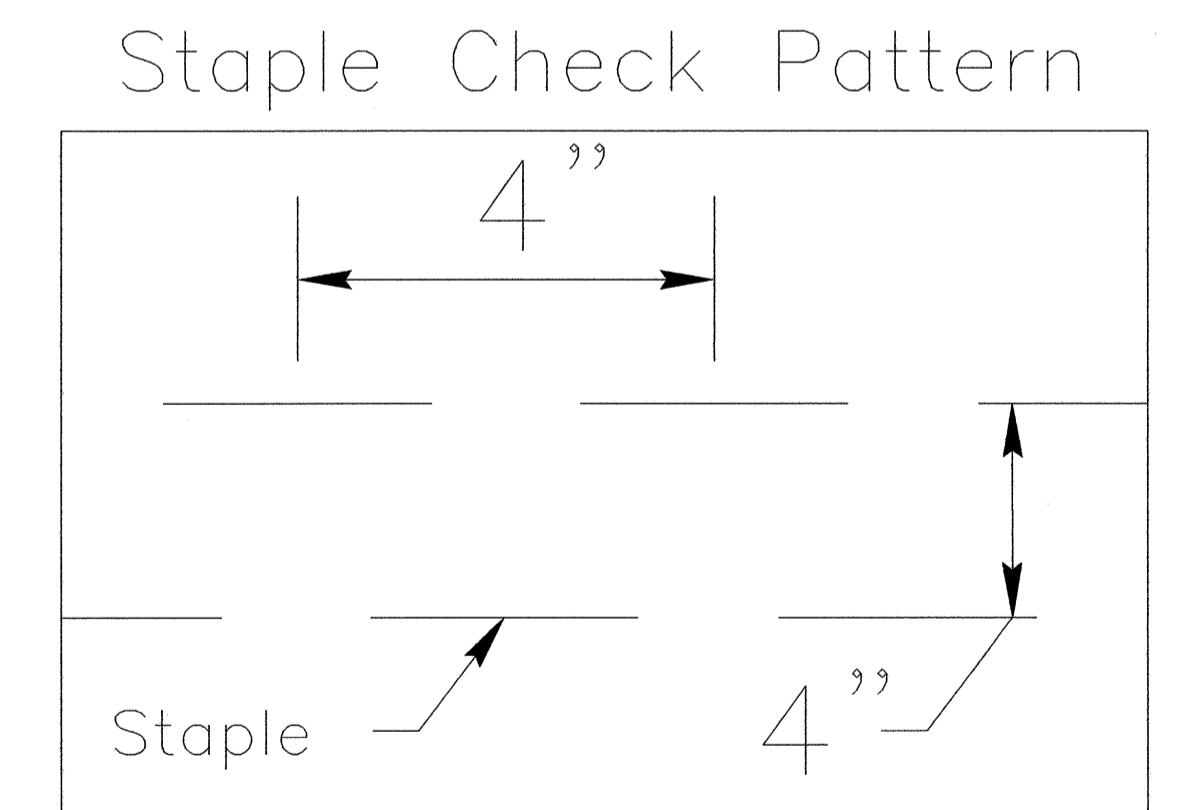


DIAGRAM (C)

NOTES:

THIS DETAIL APPLIES TO STRAW, EXCELSIOR, AND PERMANENT SOIL REINFORCEMENT MAT (PSRM) INSTALLATION.

STAPLES SHALL BE NO. 11 GAUGE STEEL WIRE FORMED INTO A "U" SHAPE WITH A MINIMUM THROAT WIDTH OF 1 INCH AND NOT LESS THAN 6 INCHES IN LENGTH.

NOT TO SCALE

8/17/99

NOTE:
PLACE TEMPORARY ROCK SEDIMENT DAMS TYPE - B
AND TEMPORARY ROCK SILT CHECKS TYPE - A AT
DRAINAGE OUTLETS.

CLEARING AND GRUBBING
EROSION CONTROL SHEET
FOR CONSTRUCTION SHEET 04

PROJECT REFERENCE NO. B-4473	SHEET NO. EC-03/CONST.04
RW SHEET NO.	
ROADWAY DESIGN ENGINEER	HYDRAULICS ENGINEER

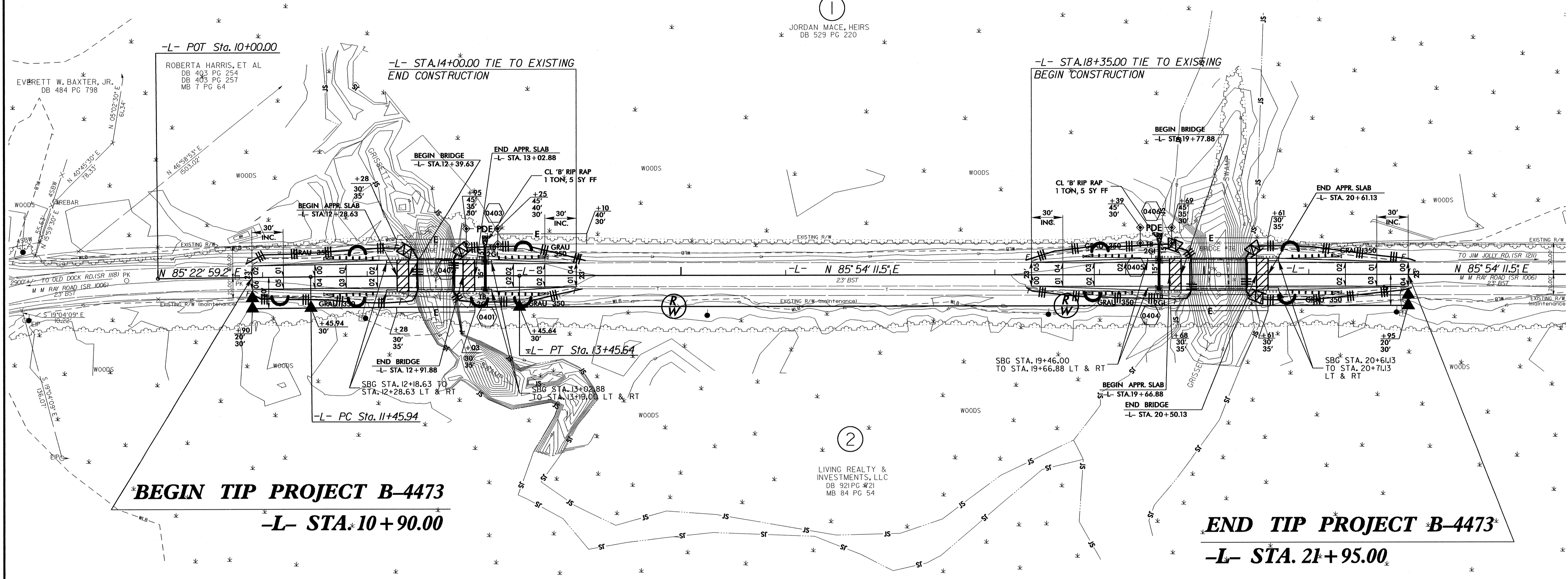
NAD 8395

10

15

20

REVISIONS



①
JORDAN MACE, HEIRS
DB 529 PG 220

②
LIVING REALTY &
INVESTMENTS, LLC
DB 921 PG 21
MB 84 PG 54

18-AUG-2011 15:00
R:\Environment\Design\B4473-EC-psh_04.dgn
10/24/2011 10:27:00
AT RENY247770

8/17/99

PROJECT REFERENCE NO.	SHEET NO.
B-4473	EC-04/CONST.04
R/W SHEET NO.	
ROADWAY DESIGN ENGINEER	HYDRAULICS ENGINEER



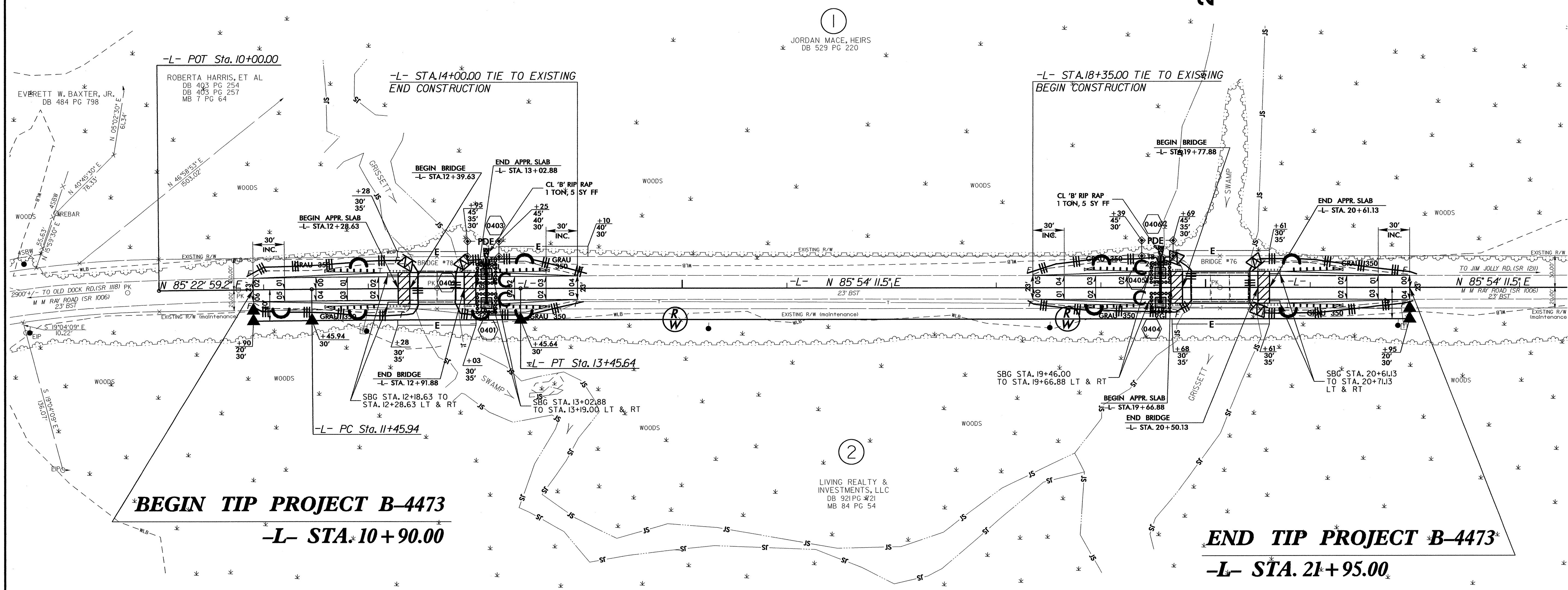
Place Matting for Erosion Control on Slopes Adjacent to Permitted Wetlands as Work Allows.

REVISIONS

10

15

20



I:\AUG-2011\1500
 R:\Environment\B4473_EC_psh_04.dgn
 B4473_EC_PSH_04.dgn
 8/17/99