

15-AUG-2011 13:18  
 P:\TIP-Projects-U-3812\TIP-Projects-U-3812\Signing\CADD\PMP-Pavement Marking Seed.dgn  
 wsl\erjohnson AT 12/27/11

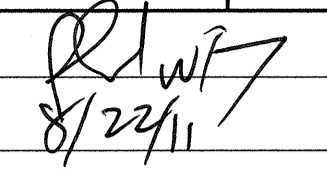
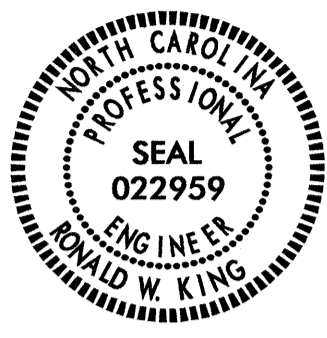
**T.I.P.: U-3812**

**CONTRACT: C202744**

**STATE OF NORTH CAROLINA  
 DEPARTMENT OF TRANSPORTATION**

**PAVEMENT MARKING PLAN  
 ASHE COUNTY**

**LOCATION: NC 88 (WEST MAIN ST.) FROM NC 194  
 TO US 221 BUSINESS (SOUTH MAIN ST.)**

TIP NO. U-3812	SHEET NO. PMP-1
APPROVED: 	
DATE: 8/22/11	
SEAL	
	

**ROADWAY STANDARD DRAWING**

THE FOLLOWING ROADWAY STANDARDS AS APPEAR IN "ROADWAY STANDARD DRAWINGS" - PROJECT SERVICES UNIT - N.C. DEPARTMENT OF TRANSPORTATION - RALEIGH, N.C., DATED JULY 2006 ARE APPLICABLE TO THIS PROJECT AND BY REFERENCE HEREBY ARE CONSIDERED A PART OF THESE PLANS:

STD. NO.	TITLE
1205.01	PAVEMENT MARKINGS - LINE TYPES AND OFFSETS
1205.02	PAVEMENT MARKINGS - 2 LANE AND MULTILANE ROADWAYS
1205.04	PAVEMENT MARKINGS - INTERSECTIONS
1205.09	PAVEMENT MARKINGS - PAINTED ISLANDS
1253.01	SNOWPLOWABLE RAISED PAVEMENT MARKERS
1261.01	GUARDRAIL AND BARRIER DELINEATOR SPACING
1261.02	GUARDRAIL AND BARRIER DELINEATOR TYPES
1262.01	GUARDRAIL END DELINEATION

**GENERAL NOTES**

THE FOLLOWING GENERAL NOTES APPLY AT ALL TIMES FOR THE DURATION OF THE CONSTRUCTION PROJECT, EXCEPT WHEN OTHERWISE NOTED IN THE PLAN, OR DIRECTED BY THE ENGINEER.

A) INSTALL PAVEMENT MARKINGS AND PAVEMENT MARKERS ON THE FINAL SURFACE AS FOLLOWS:

ROAD NAME	MARKING	MARKER
NC 88 (West Main St.)	Polyurea Thermoplastic	Snowplowable

C) PLACE TWO APPLICATIONS OF PAINT PAVEMENT MARKINGS ON THE FINAL WEARING SURFACE. PLACE THE SECOND APPLICATION OF PAINT UPON SUFFICIENT DRYING TIME OF THE FIRST.

D) TIE PROPOSED PAVEMENT MARKING LINES TO EXISTING PAVEMENT MARKING LINES.

E) REMOVE/REPLACE ANY CONFLICTING/DAMAGED PAVEMENT MARKINGS AND MARKERS.

F) PASSING ZONES WILL BE DETERMINED IN THE FIELD AND MUST BE APPROVED BY THE ENGINEER.

G) STOPBAR LOCATION AT NON-SIGNALIZED INTERSECTIONS MAY BE ADJUSTED AS DIRECTED BY THE ENGINEER.

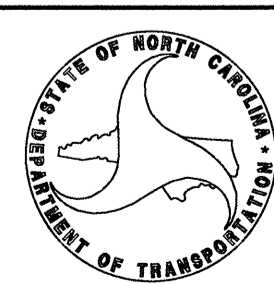
**INDEX**


SHEET NO.	DESCRIPTION
PMP-1	PAVEMENT MARKING PLAN TITLE AND SCHEDULE SHEET
PMP-1A	CROSSWALK AND STOP BAR DETAIL
PMP-2-7	PAVEMENT MARKING DETAIL

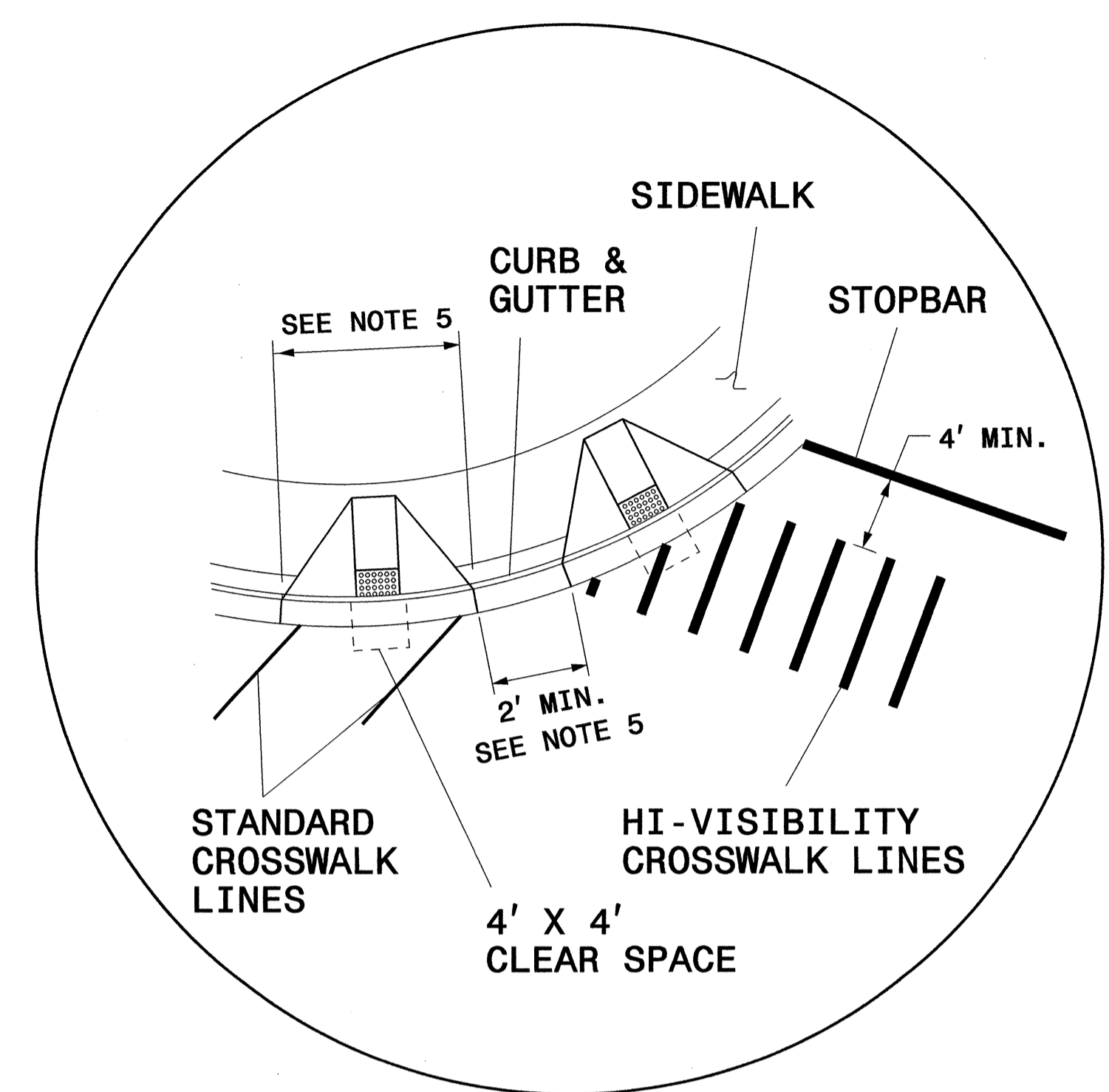
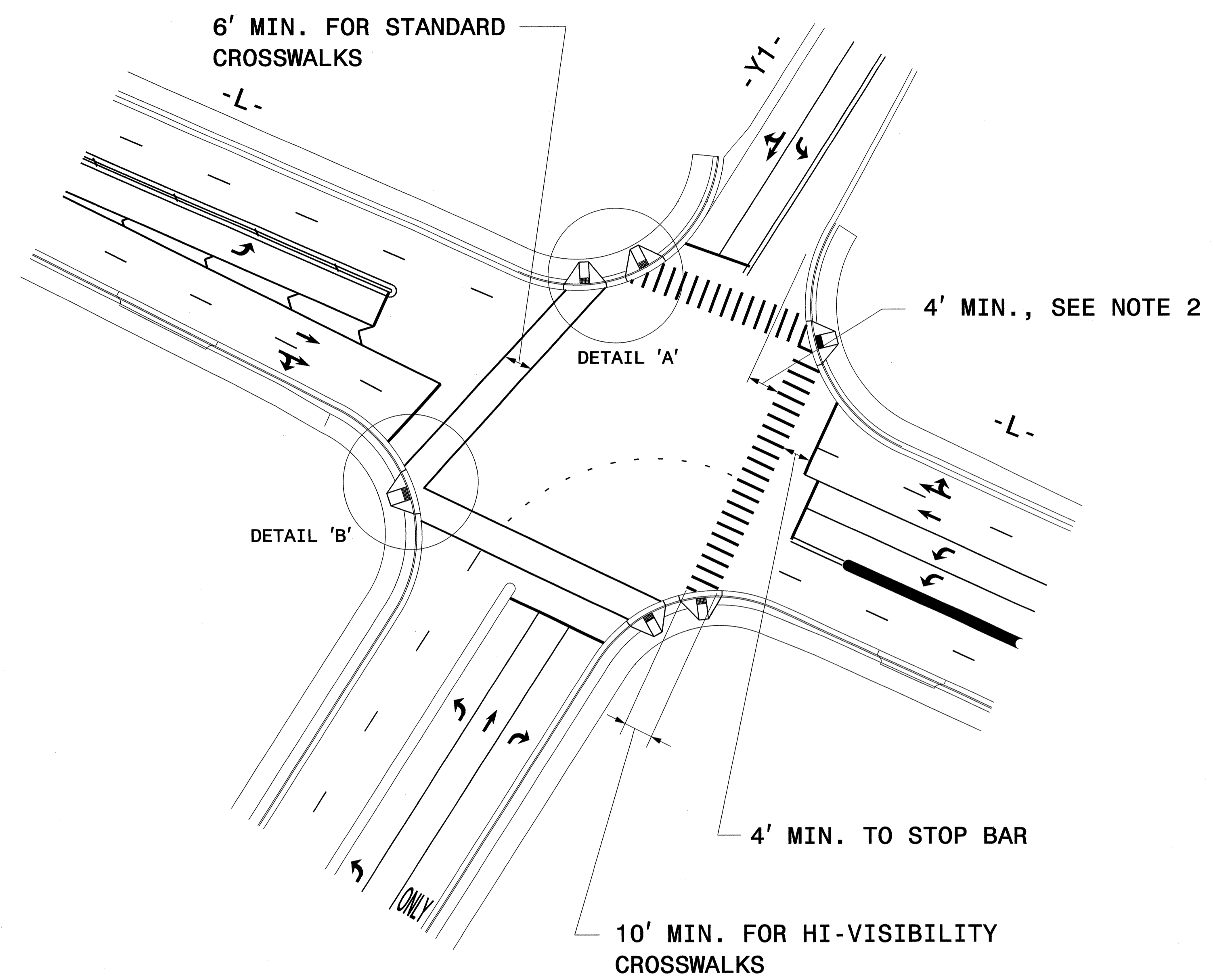
PLAN PREPARED BY: N.C.D.O.T. SIGNING AND DELINEATION UNIT

\_\_\_\_ SIGNING & DELINEATION REGIONAL ENGINEER

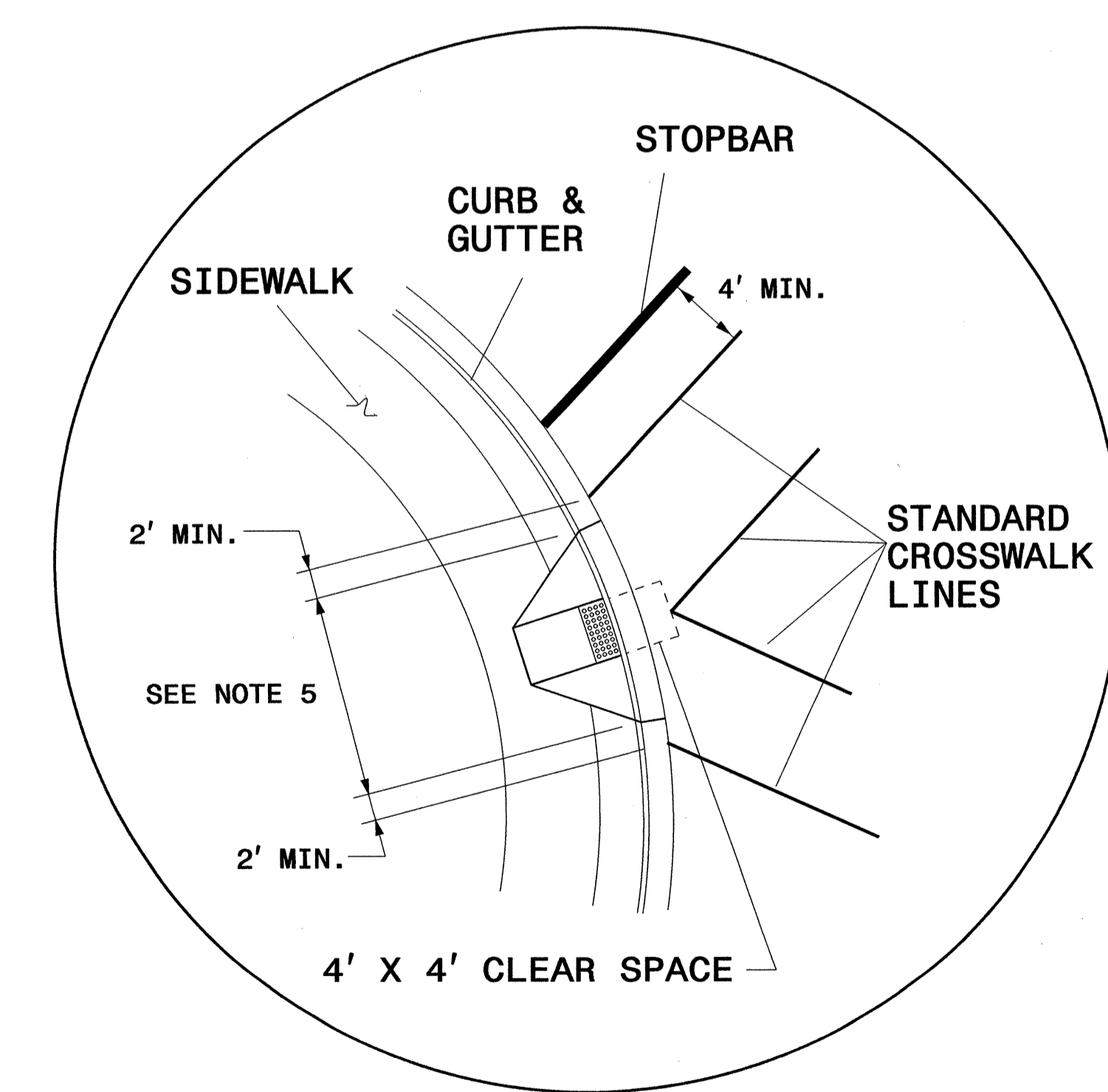
\_\_\_\_ SIGNING & DELINEATION PROJECT DESIGN ENGINEER/TECHNICIAN



TIP NO. U-3812	SHEET NO. PMP-1A
APPROVED: <i>[Signature]</i>	
DATE: 8/22/11	
SEAL	
	
REVISIONS	



DETAIL 'A'- DUAL CURB RAMP




DETAIL 'B'- SINGLE DIAGONAL CURB RAMP

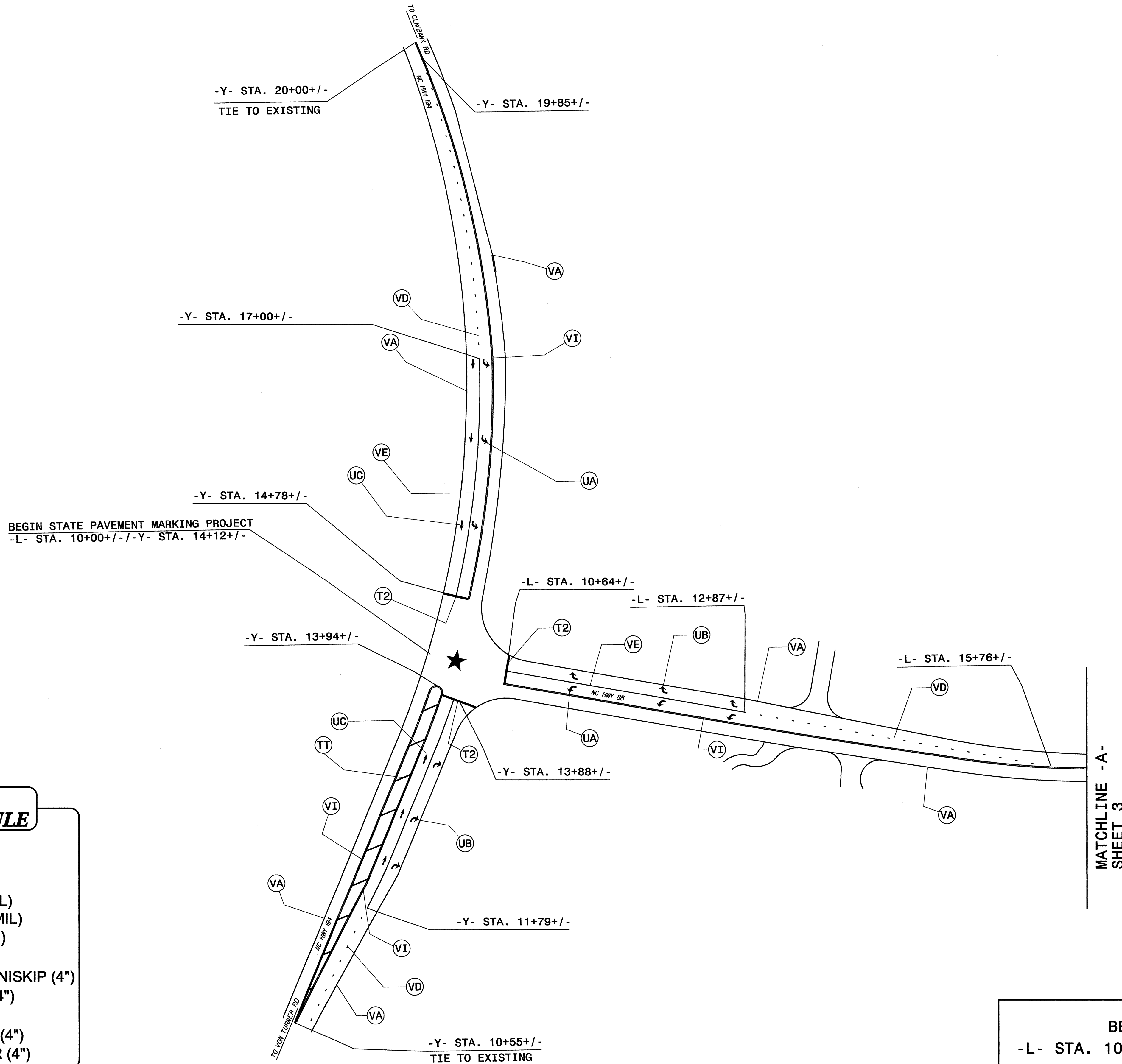
**GUIDANCE DETAIL FOR STANDARD AND HI-VISIBILITY CROSSWALKS AT SIGNALIZED OR STOP SIGN CONTROLLED INTERSECTIONS**

- NOTES:**
1. USE DETAILS ABOVE AND THE FOLLOWING NOTES FOR GUIDANCE IN PLACING CROSSWALKS AND STOP BARS NOT STATIONED ON THE DETAIL SHEETS OR WHEN FIELD ADJUSTMENTS REQUIRED MOVING STATIONED MARKINGS AS DIRECTED BY THE ENGINEER. REFER TO NCDOT ROADWAY STANDARD DRAWINGS, MUTCD AND ADA STANDARDS FOR ADDITIONAL GUIDANCE.
  2. SET BACK DISTANCE FROM INSIDE CROSSWALK MARKING TO NEAREST EDGE OF TRAVEL IS 4' MIN.
  3. BEYOND THE CURB FACE, A CLEAR SPACE OF 4' X 4' MINIMUM SHALL BE PROVIDED WITHIN THE WIDTH OF THE CROSSWALK.
  4. SINGLE DIAGONAL CURB RAMP WITH FLARED SIDES SHALL HAVE A SEGMENT OF CURB 2 FEET LONG MINIMUM LOCATED ON EACH SIDE OF THE CURB RAMP AND WITHIN THE MARKED CROSSING, SEE DETAIL 'B'.
  5. CURB RAMP SHALL BE CONSTRUCTED IN ACCORDANCE TO THE LATEST NCDOT ROADWAY STANDARD DRAWINGS.

**CROSSWALK AND STOP BAR PAVEMENT MARKING DETAIL**

15-AUG-2011 13:20  
 P:\Projects\U-3812\Traffic\Signing\CADD\MP\Pavement Marking Seed.dgn  
 AT Te24758  
 walterjohnson

TIP NO. U-3812	SHEET NO. PMP-2
APPROVED: <i>R.W.T.</i>	
DATE: 8/22/11	
SEAL	
	




**PAVEMENT MARKING SCHEDULE**

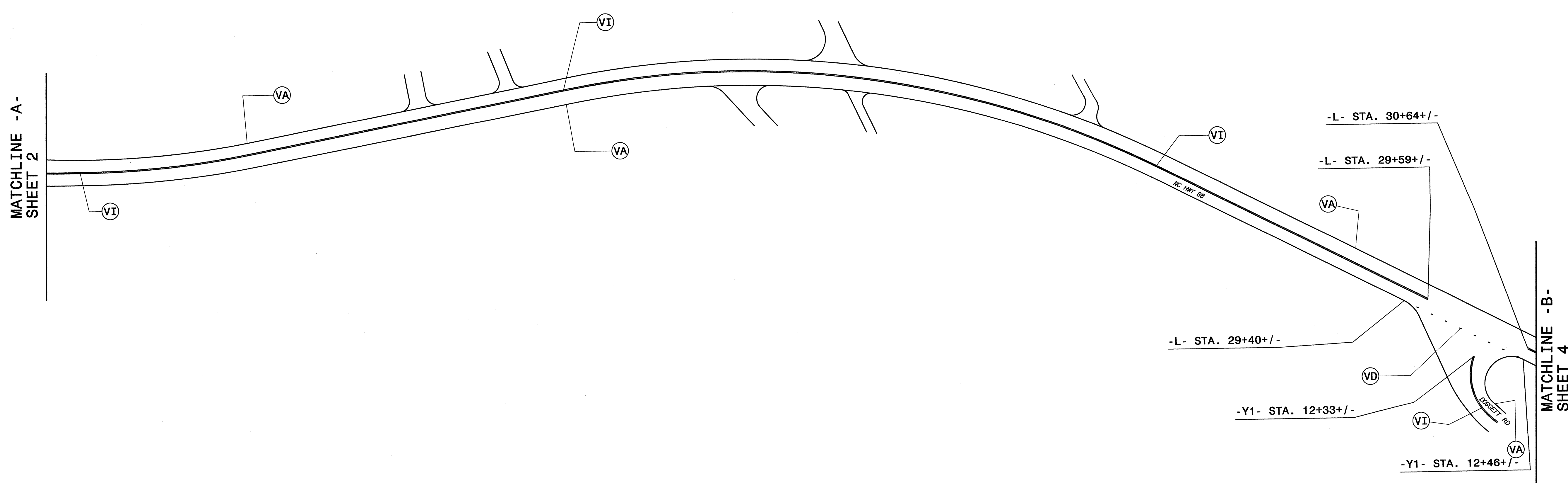
SYMBOL	DESCRIPTION
T2	WHITE STOPBAR (24")
TT	YELLOW DIAGONAL (8")
UA	LEFT TURN ARROW (90 MIL)
UB	RIGHT TURN ARROW (90 MIL)
UC	STRAIGHT ARROW (90 MIL)
VA	WHITE EDGELINE (4")
VD	2 FT. - 13 FT./SP WHITE MINISKIP (4")
VE	WHITE SOLID LANE LINE (4")
VF	10FT YELLOW SKIP (4")
VH	YELLOW SINGLE CENTER (4")
VI	YELLOW DOUBLE CENTER (4")

**BEGIN PROJECT**  
-L- STA. 10+00 TO -L- STA. 16+40

MATCHLINE -A-  
SHEET 3

I5-AUG-2011 12:51  
 P:\TIPF-Projects-U\3812\TIPF-11\Signing\CADD\PMP\_Pavement Marking\_Sced.dgn  
 walterjohnson AT 11/27/11

TIP NO. U-3812	SHEET NO. PMP-3
APPROVED: <i>[Signature]</i>	
DATE: 8/22/11	
SEAL	
	



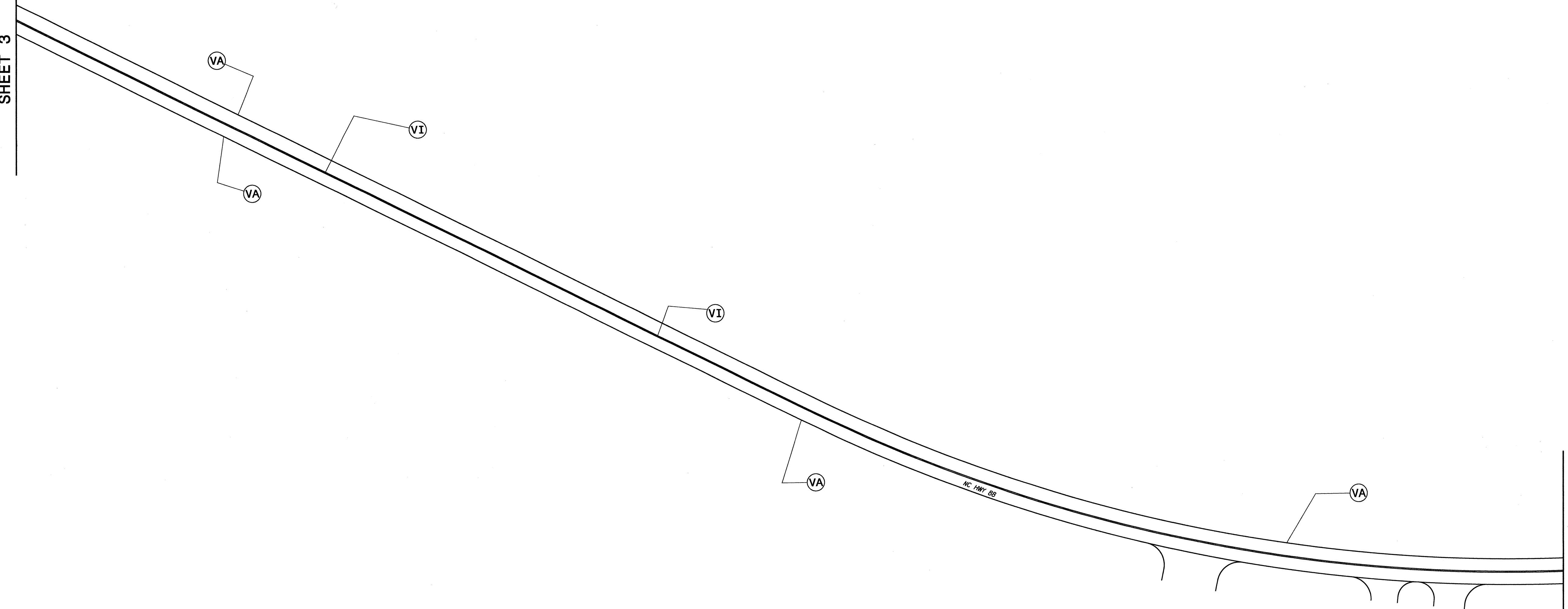
<b>PAVEMENT MARKING SCHEDULE</b>	
SYMBOL	DESCRIPTION
VA	WHITE EDGELINE (4")
VD	2 FT. - 13 FT./SP WHITE MINISKIP (4")
VI	YELLOW DOUBLE CENTER (4")

-L- STA. 16+40 TO -L- STA. 30+64

I5-AUG-2011 12:51  
 P:\Projects-U\3812\figffr\figffr\figffr\CADD\PMF\Pavement Marking Seed.dgn  
 At 12:47:51B  
 Walter Johnson

TIP NO. U-3812	SHEET NO. PMP-4
APPROVED: <i>RWT</i>	
DATE: 8/22/11	
SEAL	

MATCHLINE - B-  
SHEET 3



**PAVEMENT MARKING SCHEDULE**

SYMBOL	DESCRIPTION
VA	WHITE EDGELINE (4")
VI	YELLOW DOUBLE CENTER (4")

-L- STA. 30+64 TO -L- STA. 45+93

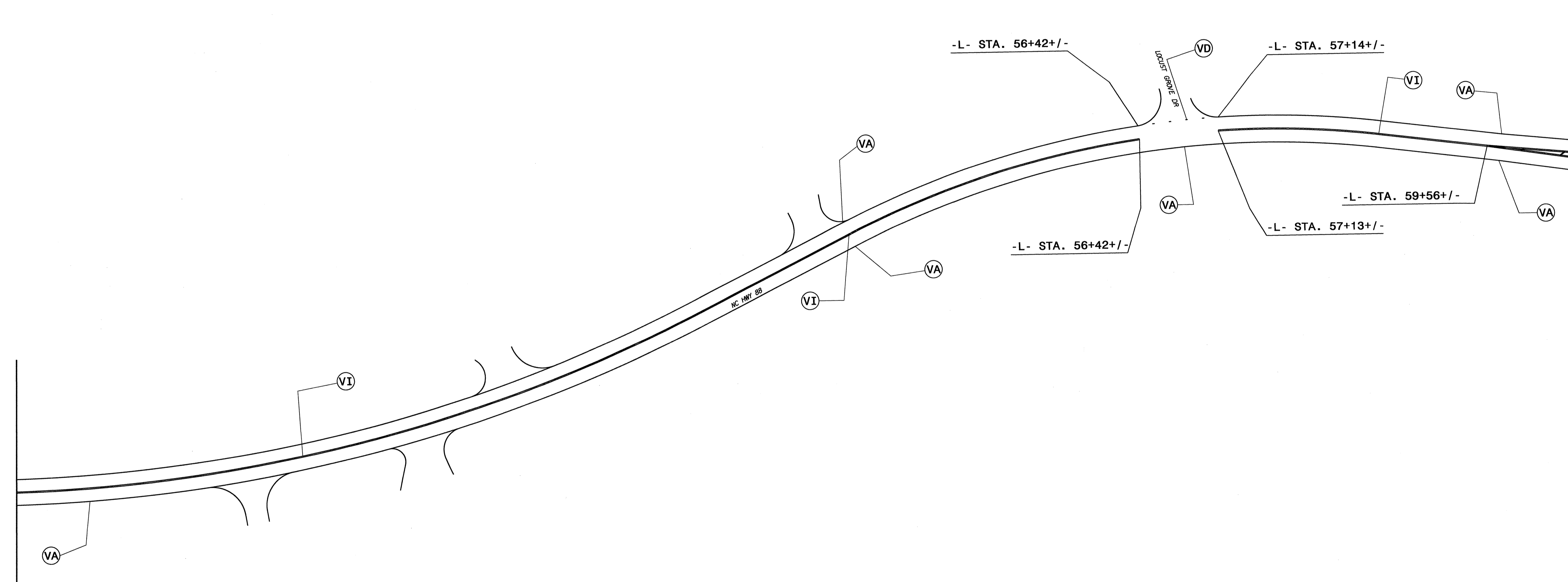
15-AUG-2011 12:52  
 P:\TIP\Projects-U\3812\11\Signing\CADD\PM\ Pavement Marking\_Seed.dgn  
 At 11:24/7/11  
 Walter Johnson



TIP NO. U-3812	SHEET NO. PMP-5
APPROVED: <i>RW</i>	
DATE: 8/22/11	
SEAL	

MATCHLINE - C-  
SHEET 4

MATCHLINE - D-  
SHEET 6




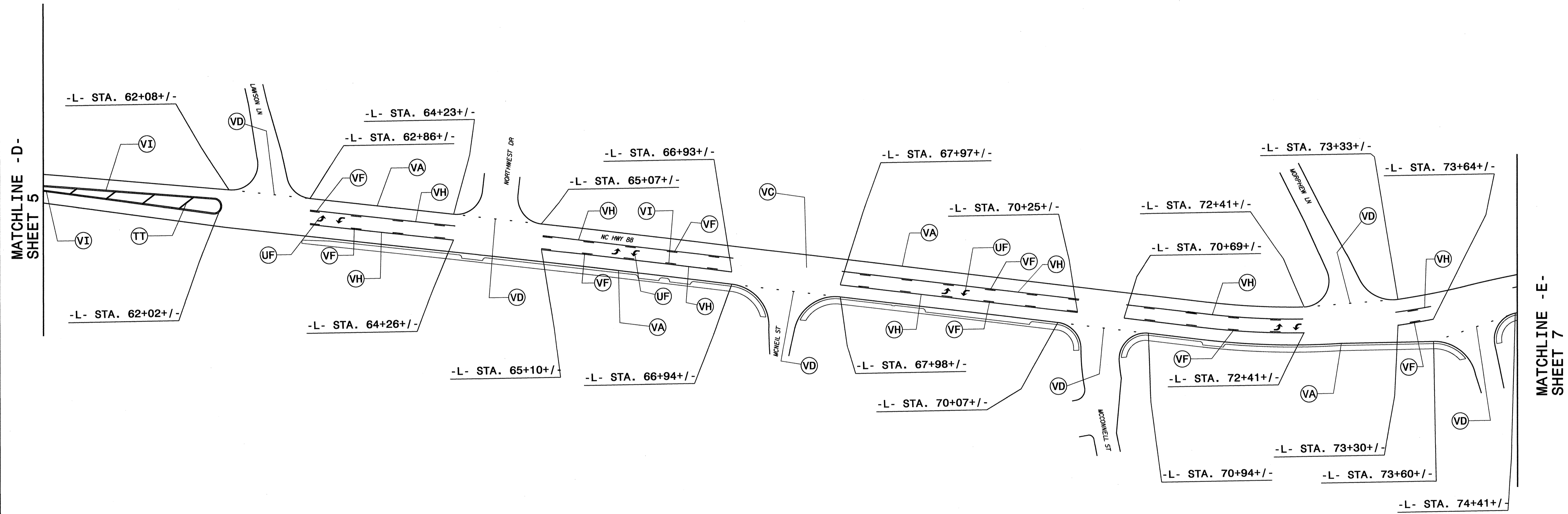
**PAVEMENT MARKING SCHEDULE**

SYMBOL	DESCRIPTION
VA	WHITE EDGELINE (4")
VD	2 FT. - 13 FT./SP WHITE MINISKIP (4")
VI	YELLOW DOUBLE CENTER (4")

-L- STA. 45+93 TO -L- STA. 60+28

I5-AUG-2011 13:16  
 P:\TIP\Projects-U\3812\11\Signing\CADD\PMP\Pavement Marking Seed.dgn  
 walter.johnson


TIP NO. U-3812	SHEET NO. PMP-6
APPROVED: <i>RW</i>	
DATE: 8/22/11	
SEAL	
	

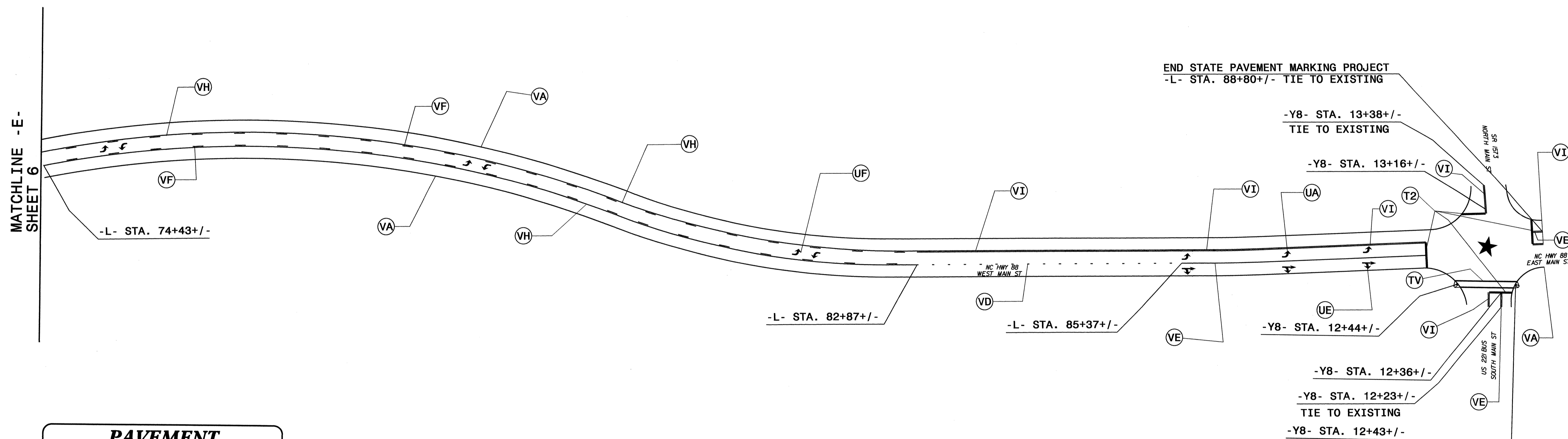


<b>PAVEMENT MARKING SCHEDULE</b>	
SYMBOL	DESCRIPTION
TT	YELLOW DIAGONAL (8")
UF	COMBO.LEFT/RIGHT (90 MIL)
VA	WHITE EDGELINE (4")
VD	2 FT. - 13 FT./SP WHITE MINISKIP (4")
VF	10FT YELLOW SKIP (4")
VH	YELLOW SINGLE CENTER (4")
VI	YELLOW DOUBLE CENTER (4")

-L- STA. 60+28 TO -L- STA.74+43

J5-AUG-2011 13:17  
 P:\TIP\Projects-U\03812\Traffic\Signing\CADD\MPMPavement Marking Seed.dgn  
 wsl\erjohnson AT 1E247518

TIP NO. U-3812	SHEET NO. PMP-7
APPROVED: <i>[Signature]</i>	
DATE: 8/22/11	
SEAL	
	



**PAVEMENT MARKING SCHEDULE**

SYMBOL	DESCRIPTION
T2	WHITE STOPBAR (24")
TV	WHITE CROSSWALK LINE (8")
UA	LEFT TURN ARROW (90 MIL)
UE	COMBO.STRAIGHT/RIGHT (90 MIL)
UF	COMBO.LEFT/RIGHT (90 MIL)
VA	WHITE EDGELINE (4")
VD	2 FT. - 13 FT./SP WHITE MINISKIP (4")
VE	WHITE SOLID LANE LINE (4")
VF	10FT YELLOW SKIP (4")
VH	YELLOW SINGLE CENTER (4")
VI	YELLOW DOUBLE CENTER (4")

-L- STA. 74+43 TO -L- STA. 88+80  
END PROJECT

I5-AUG-2011 3:47  
 P:\Tipp\Projects-U\U3812\Traffic\Signing\CADD\PMMP\ Pavement Marking Seed.dgn  
 AT TE24758  
 Walter Johnson