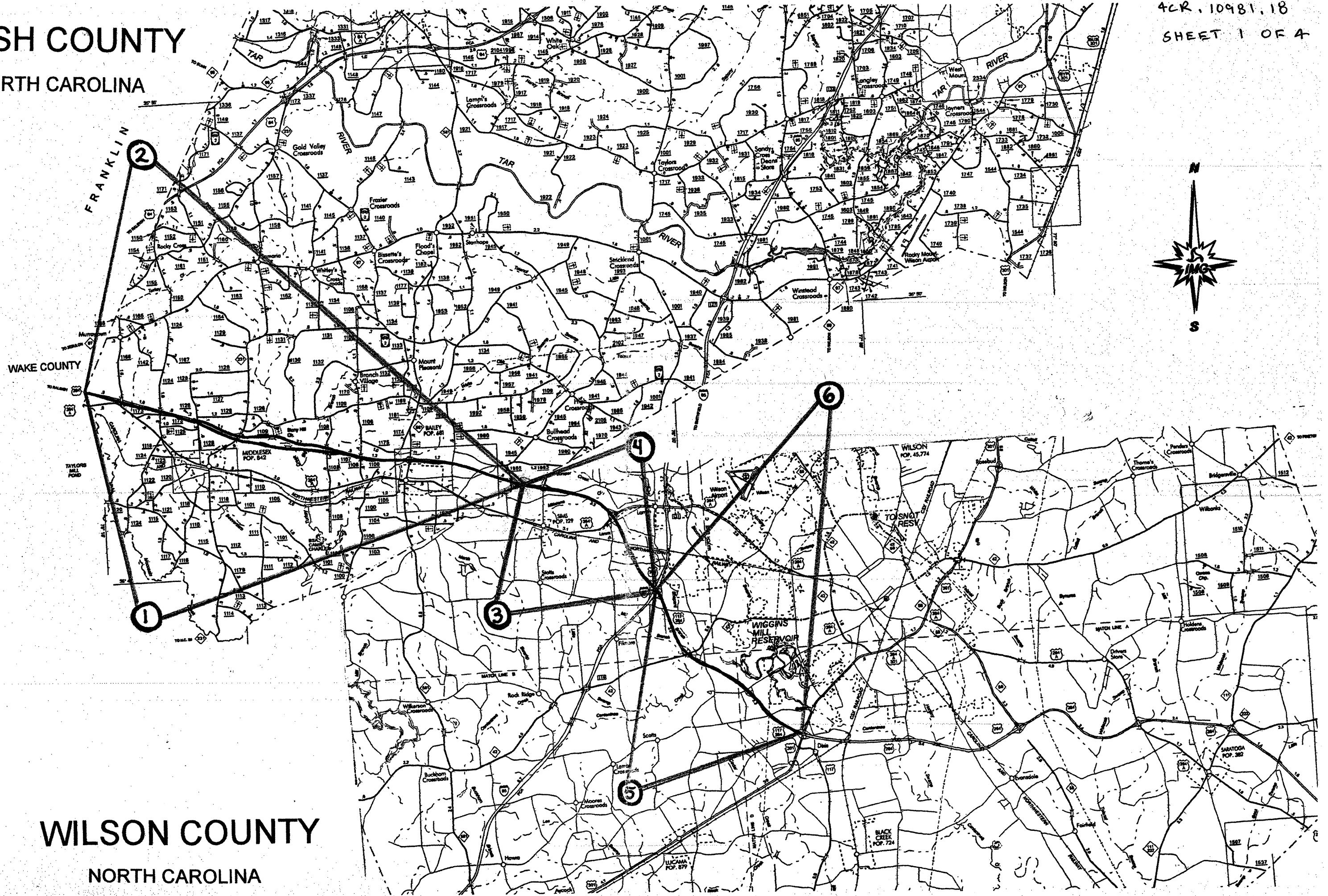


NASH COUNTY

NORTH CAROLINA

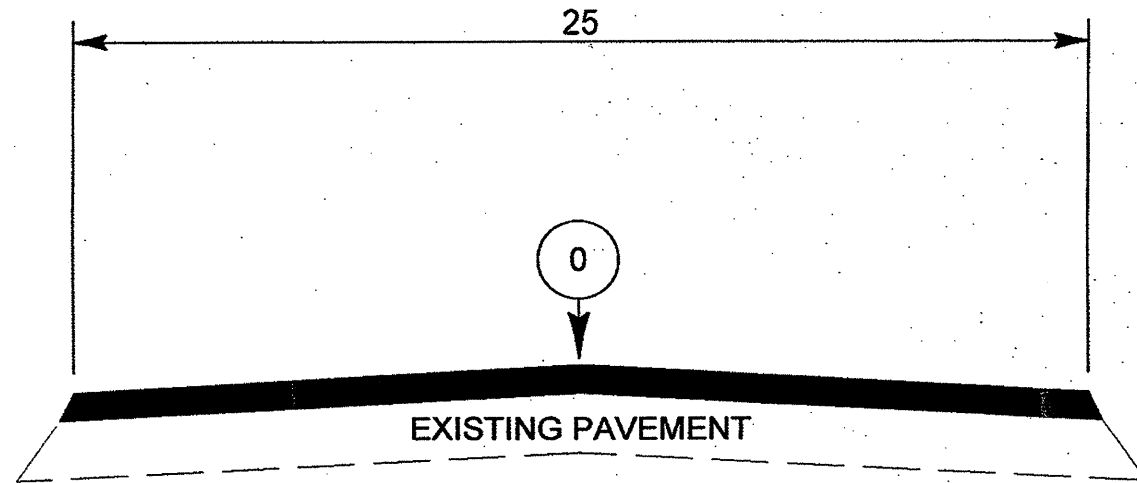
4CR.10641.13
4CR.10981.18
SHEET 1 OF 4



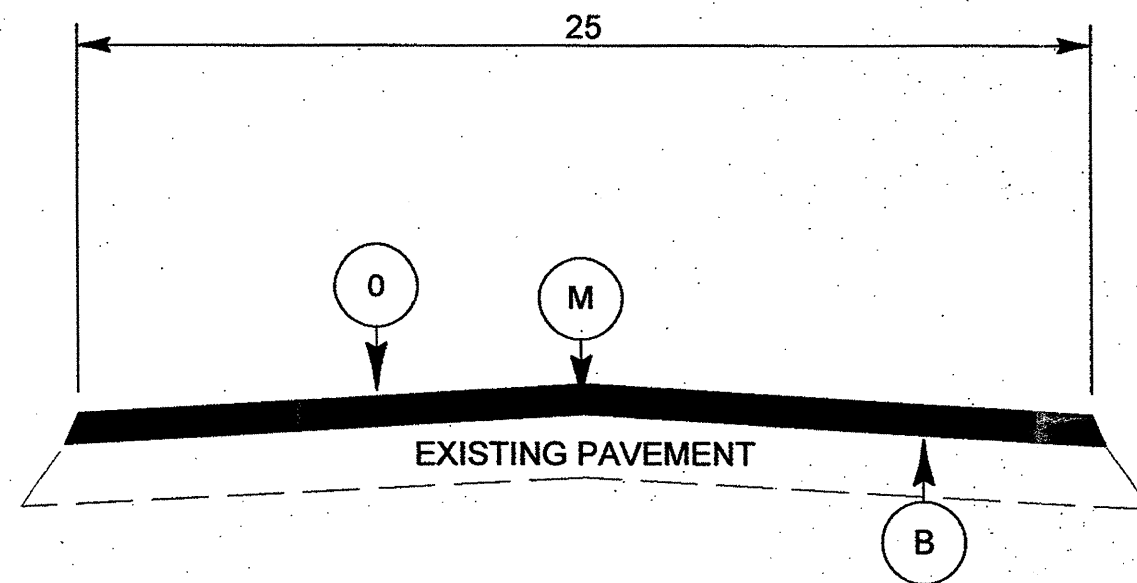
WILSON COUNTY

NORTH CAROLINA

PROJECT NO.	SHEET NO.	TOTAL SHEETS
4CR.10981.18	2	4
4CR.10641.13		



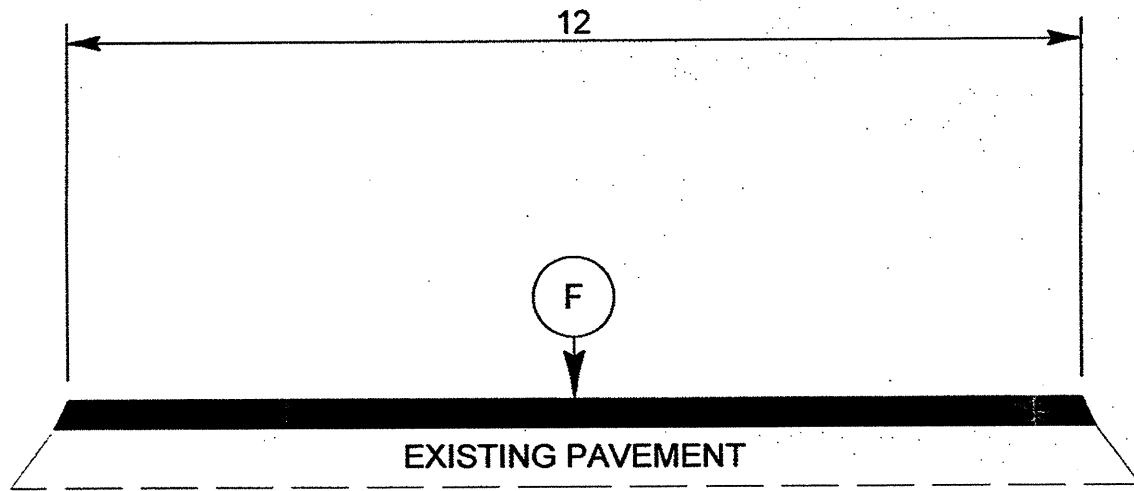
TYPICAL SECTION NO. 1



TYPICAL SECTION NO. 2

PAVEMENT SCHEDULE	
0	OPEN GRADED ASPHALT FRICTION COURSE TYPE FC-2 AT AN AVERAGE RATE OF 90 LBS PER SQ YD
B	ASPHALT CONCRETE SURFACE COURSE TYPE S9.5B AT AN AVERAGE RATE OF 168 LBS PER SQ YD (1.5")
F	OPEN GRADED FRICTION TYPE FC-1 AT A RATE OF 70 LBS. PER SQ. YD
M	1.5" FULL WIDTH MILLING

PROJECT NO.	SHEET NO.	TOTAL SHEETS
4CR.10981.18	3	4
4CR.10641.13		



TYPICAL SECTION NO. 3
(US 264 RAMPS)

PROJECT NO.	SHEET NO.	TOTAL NO.
4CR.10641.13, 4CR.10981.18	4	4

SUMMARY OF QUANTITIES

PROJECT NO	COUNTY	MAP NO	ROUTE	DESCRIPTION	TYP NO	FINAL SURFACE TESTING REQUIRED	LENGTH MI	WIDTH FT	1.5" MILLING SY	INCIDENTAL MILLING SY	SURFACE COURSE, S9.5B TONS	ASPHALT BINDER FOR PLANT MIX TONS	POLYMER MODIFIED ASPHALT BINDER TONS	OGAFC, TYPE FC-1 MOD TONS	OGAFC, TYPE FC-2 MOD TONS
4CR.10641.13	Nash	1	US 264 EB	FROM WAKE COUNTY LINE TO WILSON COUNTY LINE	1,3	NO	11.065	25		1,400			468	365	7,303
		2	US 264 WB	FROM WILSON COUNTY LINE TO WAKE COUNTY LINE	1,3	NO	11.13	25					471	370	7,346
TOTAL FOR PROJ NO. 4CR.10641.13							22.195			1,400			939	735	14,649
4CR.10981.18	Wilson	3	US 264 EB	FROM WILSON COUNTY LINE TO SIMS	1,3	NO	2.064	25					87	60	1,363
		4	US 264 WB	FROM SIMS TO NASH COUNTY LINE	1,3	NO	1.9	25					80	60	1,254
		5	US 264 EB	FROM SIMS TO US 301	2,3	NO	8.147	25	119,484		10,037	602	410	1,351	5,377
		6	US 264 WB	FROM US 301 TO SIMS	2,3	NO	8.257	25	121,100		10,173	610	404	1,175	5,450
TOTAL FOR PROJ NO. 4CR.10981.18							20.368		240,584		20,210	1,212	981	2,646	13,444
GRAND TOTAL							42.563		240,584	1,400	20,210	1,212	1,920	3,381	28,093

THERMOPLASTIC AND PAINT QUANTITIES

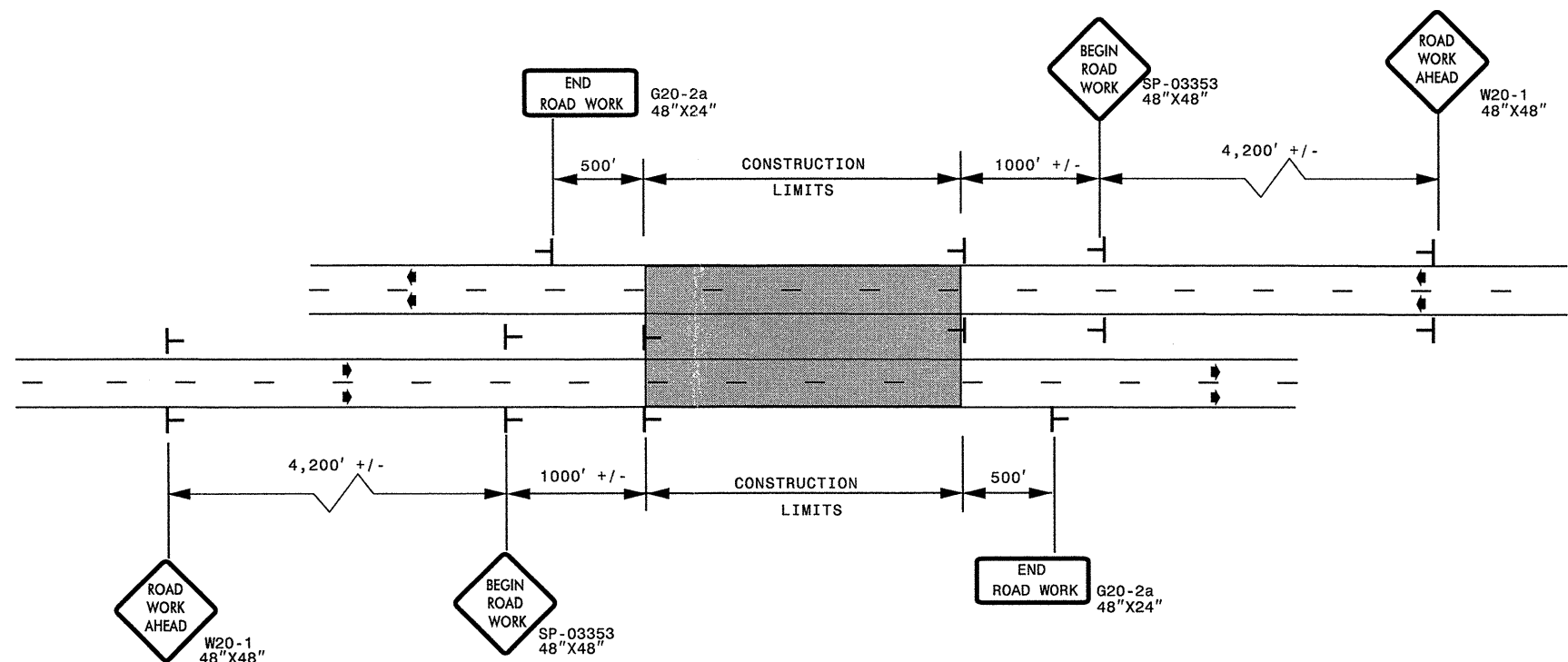
PROJECT	COUNTY	MAP	ROUTE	DESCRIPTION	WIDTH	4721000000-E		4725000000-E		4815000000-E		4847100000-E		4847120000-E	4900000000-N	
						THERMO MSG ONLY 120 M	THERMO STR ARROW 90 M	THERMO RT ARROW 90 M	THERMO STR & RT ARROW 90 M	6" WHITE PAINT	6" YELLOW PAINT	6" WHITE POLYUREA (H.R.E.)	6" YELLOW POLYUREA (H.R.E.)	12" WHITE POLYUREA (H.R.E.)	PERM. RAISED PVM.T. MARKERS	
4CR.10641.13	Nash	1	US 264 EB	FROM WAKE COUNTY LINE TO WILSON COUNTY LINE	25		6					60,100	59,000	3,939	1,200	
		2	US 264 WB	FROM WILSON COUNTY LINE TO WAKE COUNTY LINE	25		6					60,440	58,723	3,939	1,200	
TOTAL FOR PROJ NO. 4CR.10641.13							12					120,540	117,723	7,878	2,400	
							12				238,263					
4CR.10981.18	Wilson	3	US 264 EB	FROM WILSON COUNTY LINE TO SIMS	25		3					11,305	10,898	60	269	
		4	US 264 WB	FROM SIMS TO NASH COUNTY LINE	25		3					10,222	11,000	60	269	
		5	US 264 EB	FROM SIMS TO US 301	25	24	9	12	2	44,088	43,017	44,088	43,017	9,121	1,058	
		6	US 264 WB	FROM US 301 TO SIMS	25	16	16	8		44,423	43,597	44,423	43,597	9,122	1,058	
TOTAL FOR PROJ NO. 4CR.10981.18						40	31	20	2	88,511	86,614	110,038	108,512	18,363	2,654	
							53				175,125		218,550			
GRAND TOTAL						40	43	20	2	88,511	86,614	230,578	226,235	26,241	5,054	
							65				175,125		456,813			

ADVANCED WORK ZONE WARNING SIGNING FOR FREEWAYS (4 LANES OR GREATER)

WBS ELEMENTS: 4CR.10641.13 & 4CR.10981.18

PROJ. REFERENCE NO. SEE TO THE LEFT	SHEET NO. TCP-1
--	--------------------

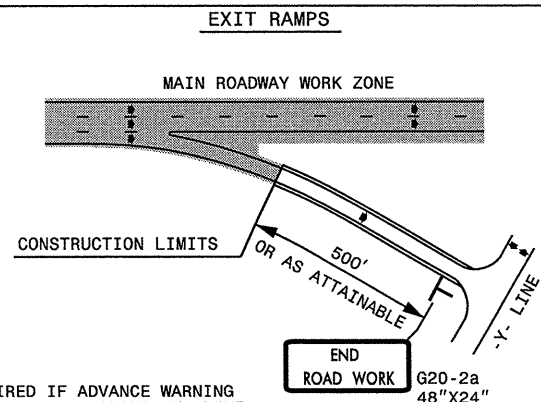
DETAIL A



LEGEND	
—	STATIONARY SIGN
→	DIRECTION OF TRAFFIC FLOW

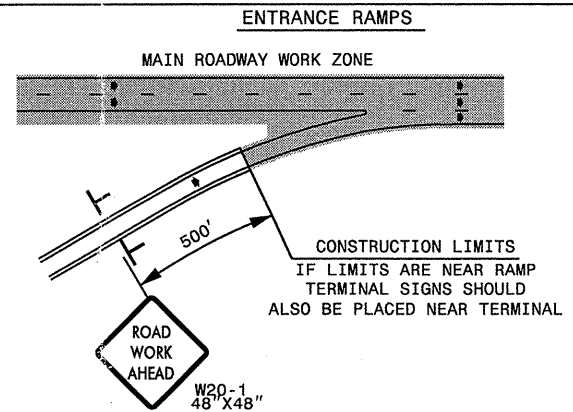
* USE THE "\$250 SPEEDING PENALTY" SIGN, SPEED LIMIT SIGN, AND ORANGE PANEL; ONLY WHEN A "\$250 SPEEDING PENALTY" ORDINANCE HAS BEEN ISSUED BY THE REGIONAL TRAFFIC ENGINEER.

DETAIL B



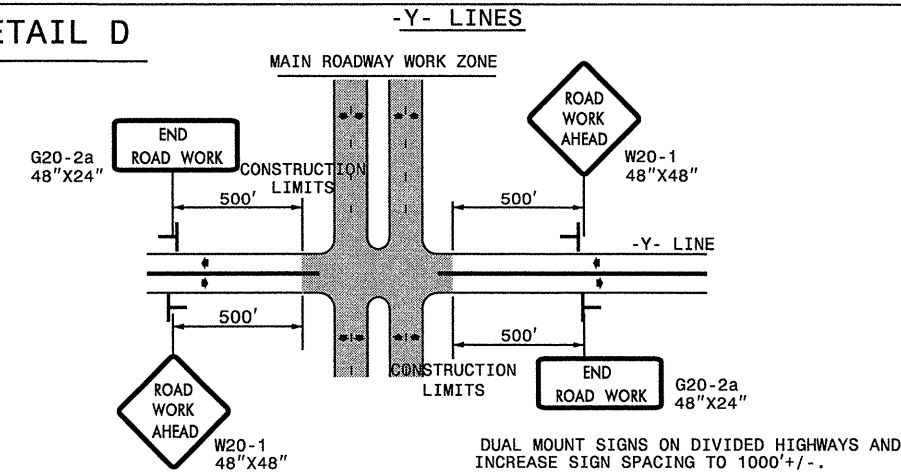
NOTE: SIGN NOT REQUIRED IF ADVANCE WARNING SIGNS HAVE BEEN PLACED ALONG -Y- LINE THAT RAMP INTERSECTS. IF CONSTRUCTION LIMITS ARE AT END OF RAMP, PLACE SIGN AT END OF RAMP.

DETAIL C



CONSTRUCTION LIMITS IF LIMITS ARE NEAR RAMP TERMINAL SIGNS SHOULD ALSO BE PLACED NEAR TERMINAL

DETAIL D



DUAL MOUNT SIGNS ON DIVIDED HIGHWAYS AND INCREASE SIGN SPACING TO 1000'+/-.

GENERAL NOTES

- USE FLUORESCENT ORANGE SHEETING (TYPE VII OR HIGHER) ON ALL ADVANCED WORK ZONE SIGNS.
- DO NOT INSTALL ADVANCE WARNING SIGNS MORE THAN 3 DAYS PRIOR TO BEGINNING OF WORK.
- SIGNS SHOWN ARE REQUIRED FOR WORK ZONES THAT WILL REMAIN IN EFFECT OVERNIGHT. FOR SHORT-TERM DAILY MAINTENANCE TYPE OPERATIONS, THIS SIGNING APPLICATION IS OPTIONAL; MAY USE ONLY APPLICABLE ROADWAY STANDARD DRAWINGS INSTEAD. HOWEVER, IF THIS SIGNING APPLICATION IS USED, SIGNS MAY BE PORTABLE MOUNTED.
- ALL SIGN SPACING DIMENSIONS ARE APPROXIMATE, FIELD ADJUST AS NECESSARY OR AS DIRECTED.
- USE 3LB STEEL U-CHANNEL POST OR 4" X 4" WOOD POST FOR ALL WORK ZONE SIGNS. 3LB STEEL U-CHANNEL POSTS MUST MEET THE REQUIREMENTS OF STANDARD SPECIFICATION SECTION 1094-1(B); MAY BE GALVANIZED STEEL, OR MAY BE PAINTED GREEN BY THE POST MANUFACTURER. SQUARE STEEL TUBING POSTS HAVING EQUIVALENT STRENGTH OF THE 3 LB STEEL U-CHANNEL POST ARE ALSO ACCEPTABLE FOR USE. ERECT SIGNS PER ROADWAY STANDARD DRAWING 1110.01. PAYMENT FOR WOOD POSTS, 3LB STEEL U-CHANNEL AND SQUARE STEEL TUBING POSTS WITH SIGNS WILL BE MADE ACCORDING TO STANDARD SPECIFICATION "WORK ZONE SIGNS" SECTION 1110.
- WHEN NECESSARY, USE SPLICING IN ACCORDANCE WITH ROADWAY STANDARD DRAWING NO. 1110.01. REMOVE ENTIRE POST WHEN REMOVING SIGNS WITH SPLICED POSTS.
- DO NOT BACK BRACE SIGN SUPPORTS.

APPROVED: _____	DATE: _____	ADVANCED WORK ZONE WARNING SIGNS FOR FREEWAYS (4 LANES OR GREATER)	
SEAL	SCALE: NONE		REVISIONS
	DATE: _____		03/04
	DESIGN BY: _____		
	REVIEWED BY: _____		

24-OCT-2011 10:03 AM C:\WORK\GROUPS-WZTC\T.MUN\WZTC\Resurfacing\2011\Div04\C2028xx-4CR\0641\3x2-NashWilson-US264m6-AKP\FinalOut\C2028xx-4CR\0641\3x2-NashWilson-US264m6-4lanes-or-greater-station-signing.dwg