

09/06/99

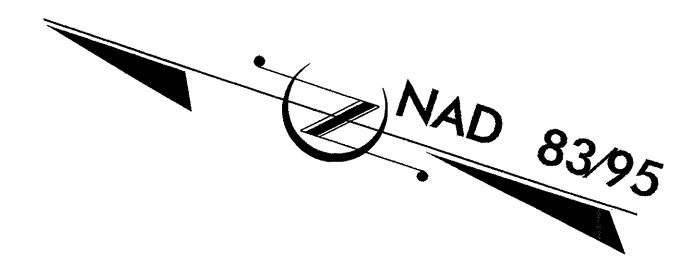
T.I.P. NO.	SHEET NO.
B-4211	UO-1

STATE OF NORTH CAROLINA  
DIVISION OF HIGHWAYS

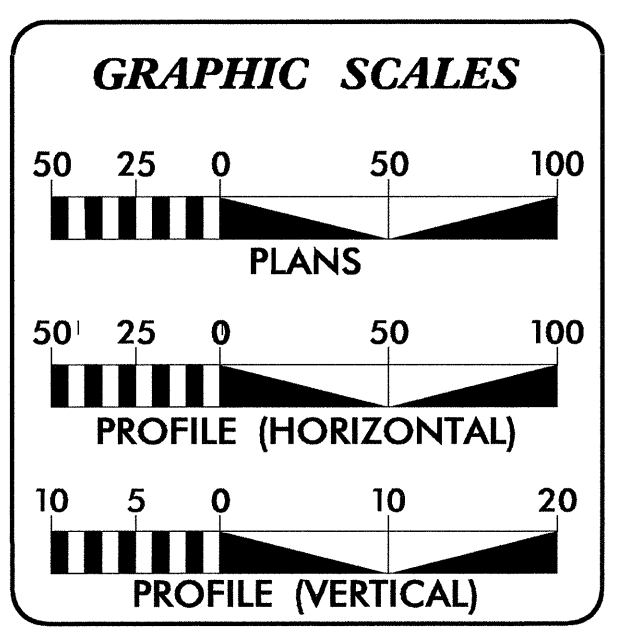
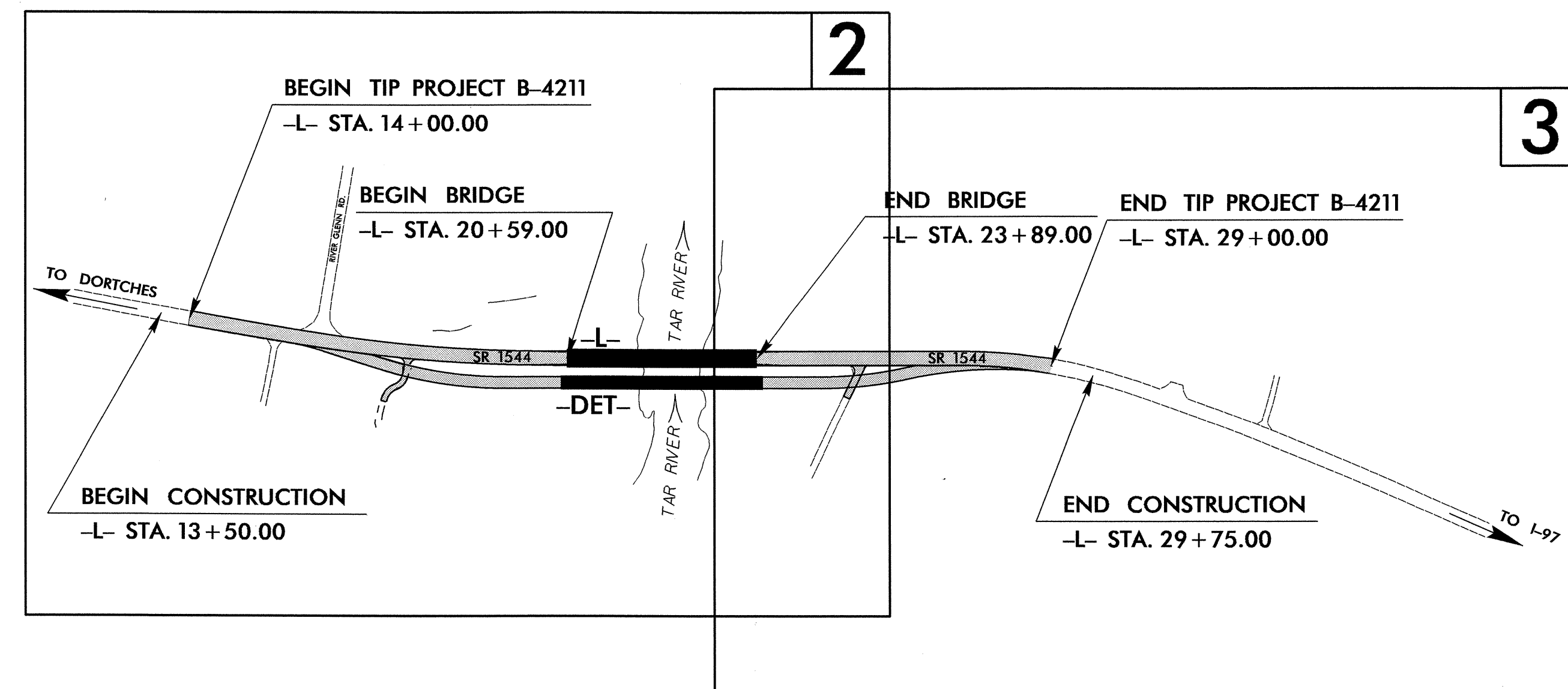
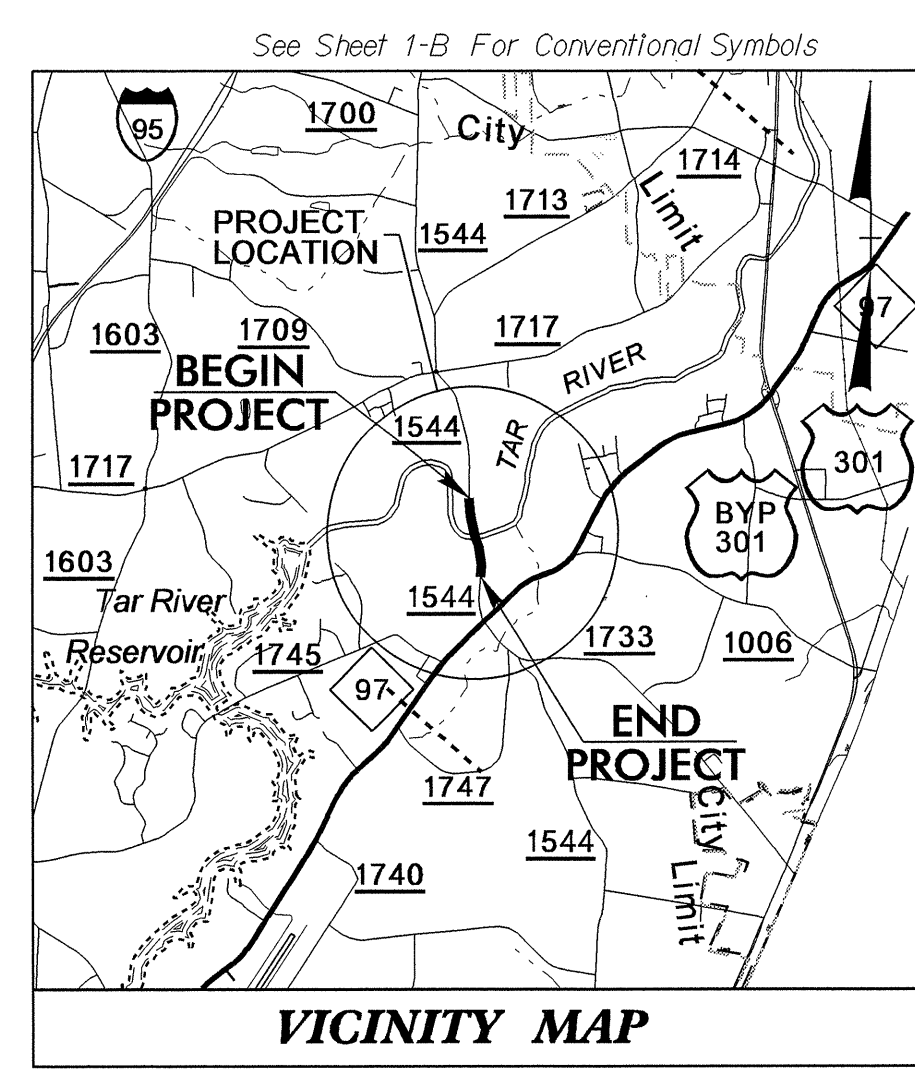
**UTILITIES BY OTHERS PLANS  
NASH COUNTY**

**LOCATION: NASH COUNTY**

**TYPE OF WORK: RELOCATION OF GAS,  
TELEPHONE AND CATV**



**TIP PROJECT: B-4211**



SHEET NO.	DESCRIPTION
UC-1	TITLE SHEET
UC-2 THRU UC-3	UTILITIES BY OTHERS PLAN SHEETS

- UTILITY OWNERS ON PROJECT**
- (1) CITY OF ROCKY MOUNT
  - (2) CENTURYLINK TELEPHONE
  - (3) SUDDENLINK CATV

PREPARED IN THE OFFICE OF:  
**DIVISION OF HIGHWAYS  
UTILITIES ENGINEERING SECTION**

1591 MAIL SERVICES CENTER  
RALEIGH NC 27699-1591  
PHONE (919) 250-4128  
FAX (919) 250-4119

Roger Worthington, P.E. UTILITIES SECTION ENGINEER  
Corey Bousquet, P.E. UTILITIES SQUAD LEADER PROJECT ENGINEER  
Kelvin Martin UTILITIES PROJECT DESIGNER

21-JUN-2011 15:31  
R:\Utilities\Rocky\_Mt\Proj\N-B-4211\UT-TITLE\_UO1.tsh.dgn  
\$\$\$\$\$USERNAME\$\$\$\$\$

### UTILITIES BY OTHERS

NOTE:  
ALL PROPOSED UTILITY WORK  
SHOWN ON THIS SHEET WILL  
BE DONE BY OTHERS

SEE STRUCTURE PLANS FOR 6" GAS LINE  
BRIDGE ATTACHMENT. 6" GAS LINE  
ATTACHMENT TO THE BRIDGE WILL BE  
INSTALLED BY NCDOT CONTRACTOR.

BEGIN TIP PROJECT B-4211  
-L- POC STA. 14+00.00

BEGIN CONSTRUCTION  
-L- STA. 13+50.00

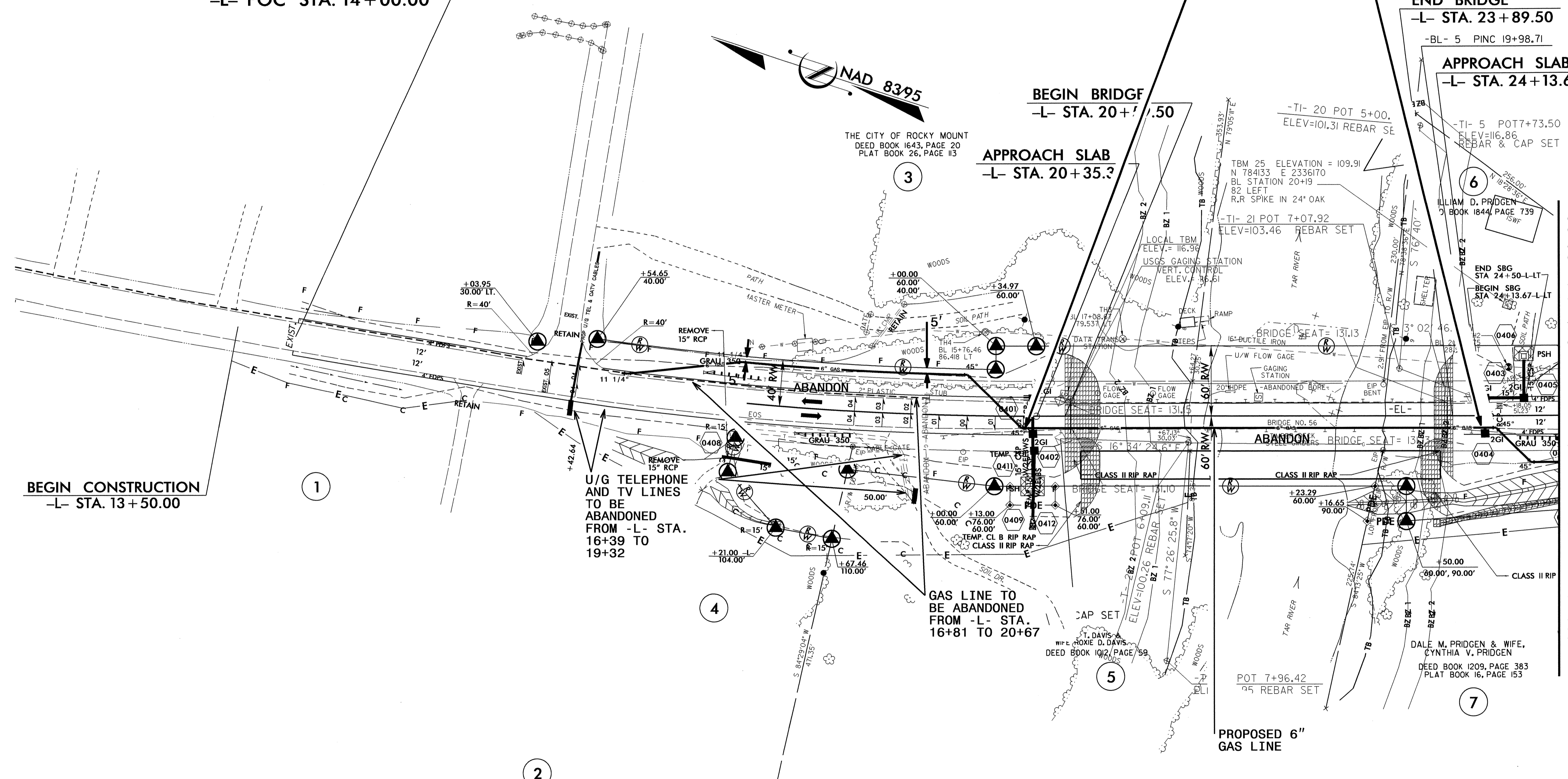
BEGIN BRIDGE  
-L- STA. 20+13.50

APPROACH SLAB  
-L- STA. 20+35.3

END BRIDGE  
-L- STA. 23+89.50

APPROACH SLAB  
-L- STA. 24+13.67

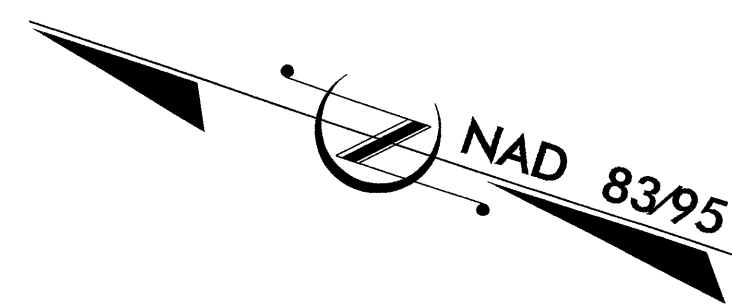
MATCHLINE SHEET UO-3 -L- STA 24+80.00



5/14/99  
21-JUN-2011 09:58:55 C:\B-4211\Ut-4\_L02\_psh.dgn

# UTILITIES BY OTHERS

**NOTE:**  
ALL PROPOSED UTILITY WORK  
SHOWN ON THIS SHEET WILL  
BE DONE BY OTHERS



MATCHLINE SHEET 4 -L- STA 24+80.00

