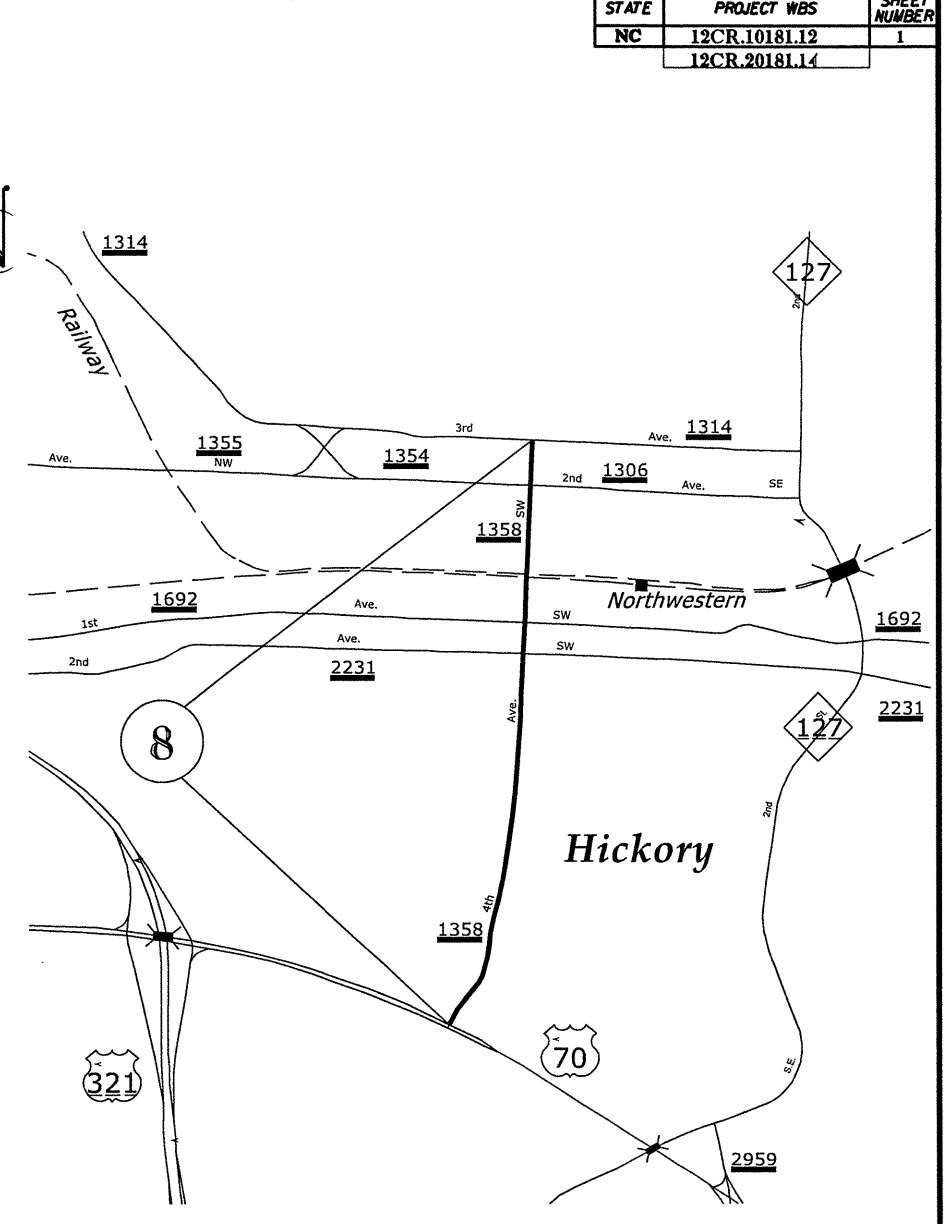
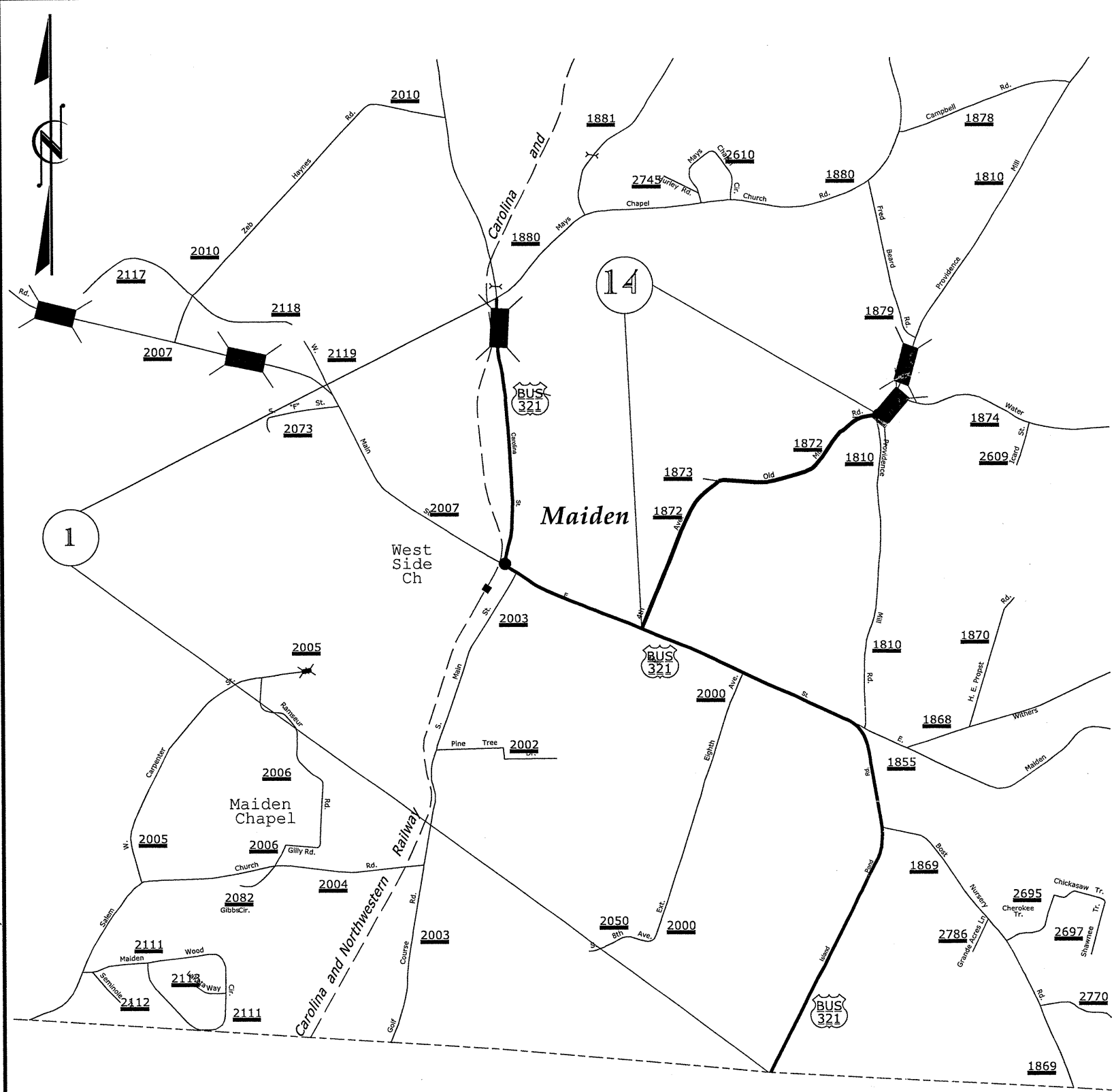


STATE	PROJECT WBS	SHEET NUMBER
NC	12CR.10181.12	1
	12CR.20181.14	



Drawn by: G. BRITAIN

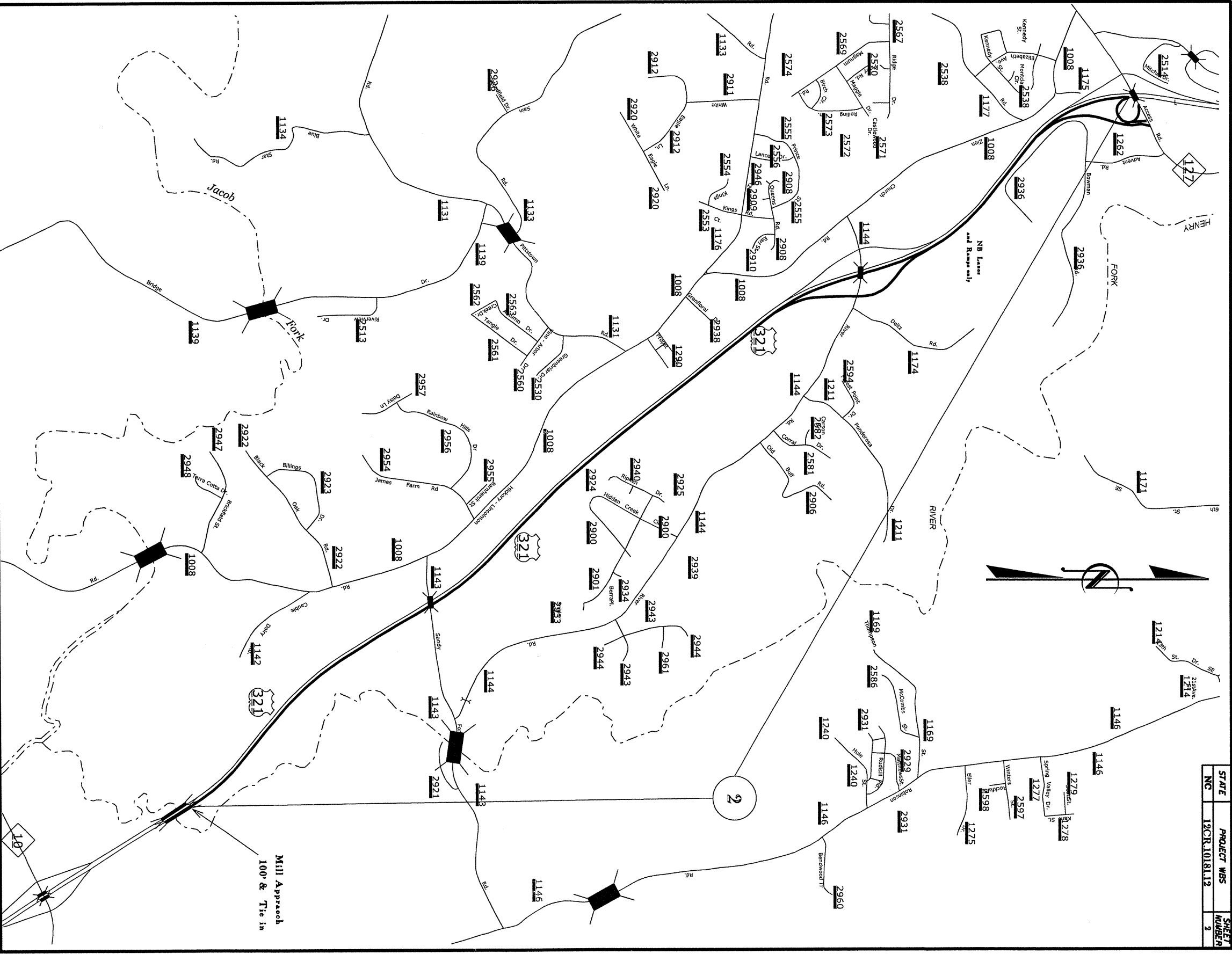
Lincoln County

No Scale

**2011-2012
Resurfacing Map**

CATAWBA COUNTY NC

STATE	PROJECT WBS	SHEET
NC	12CR10181.12	2

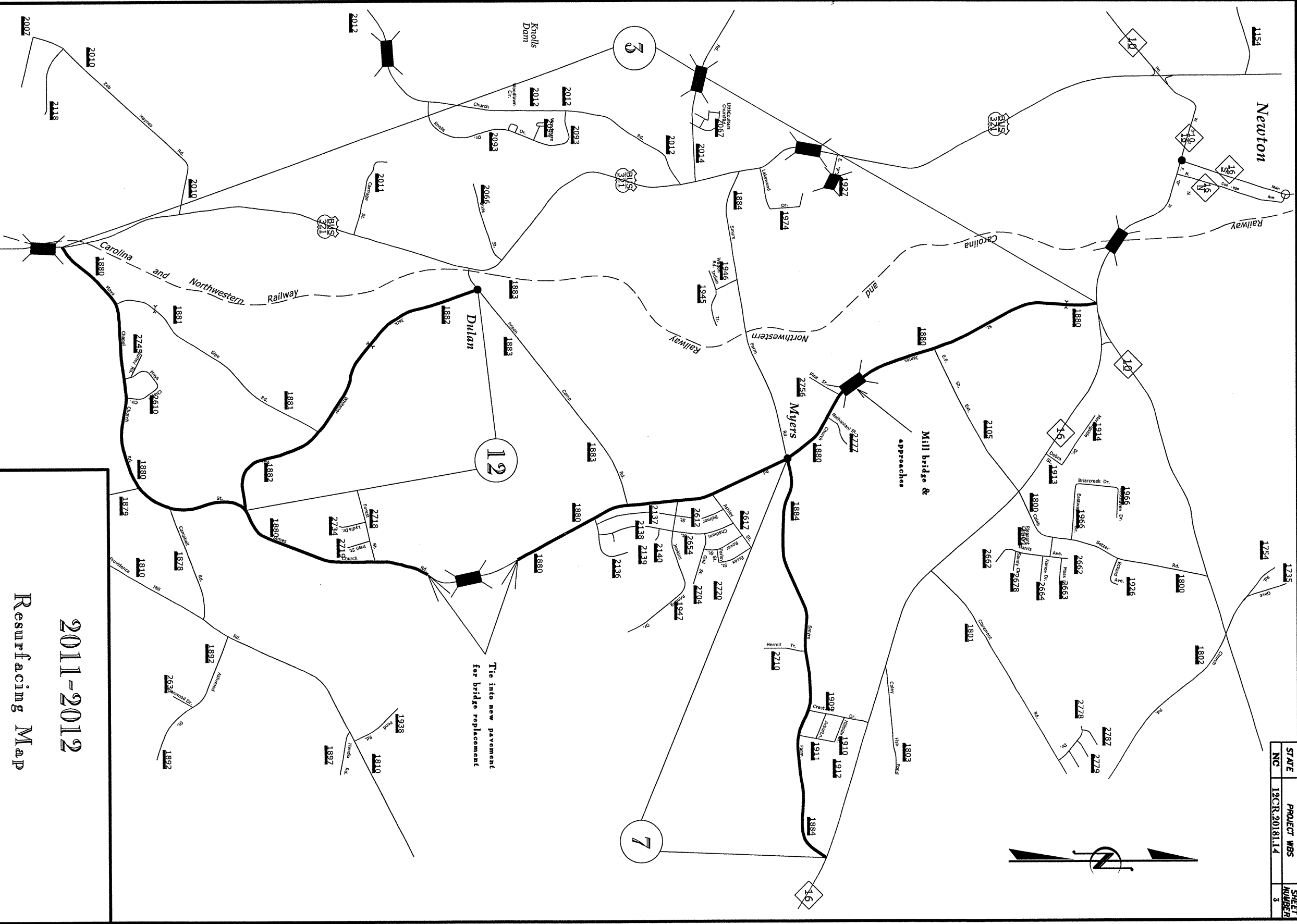


2011-2012
Resurfacing Map

No Scale

CATAWBA COUNTY NC

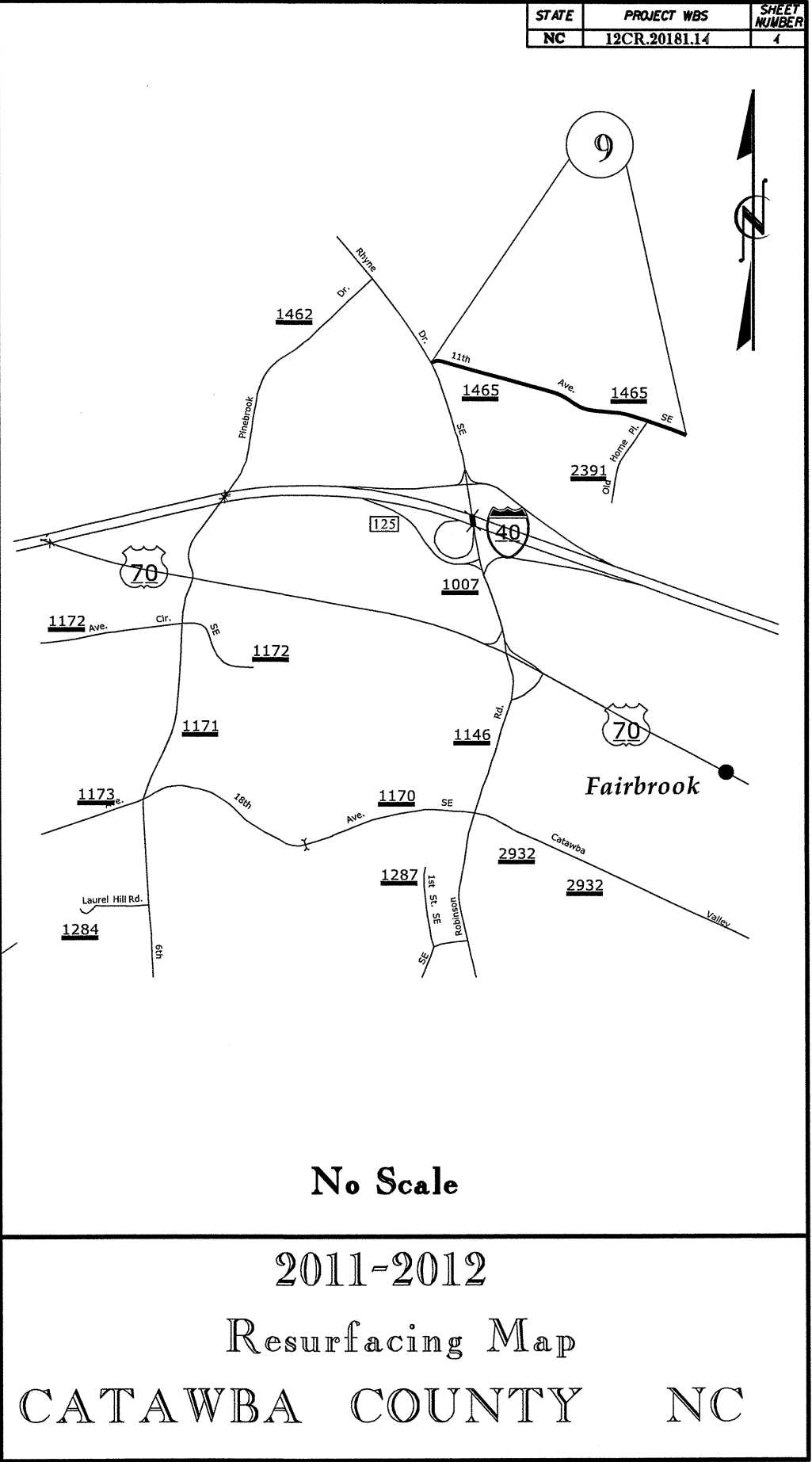
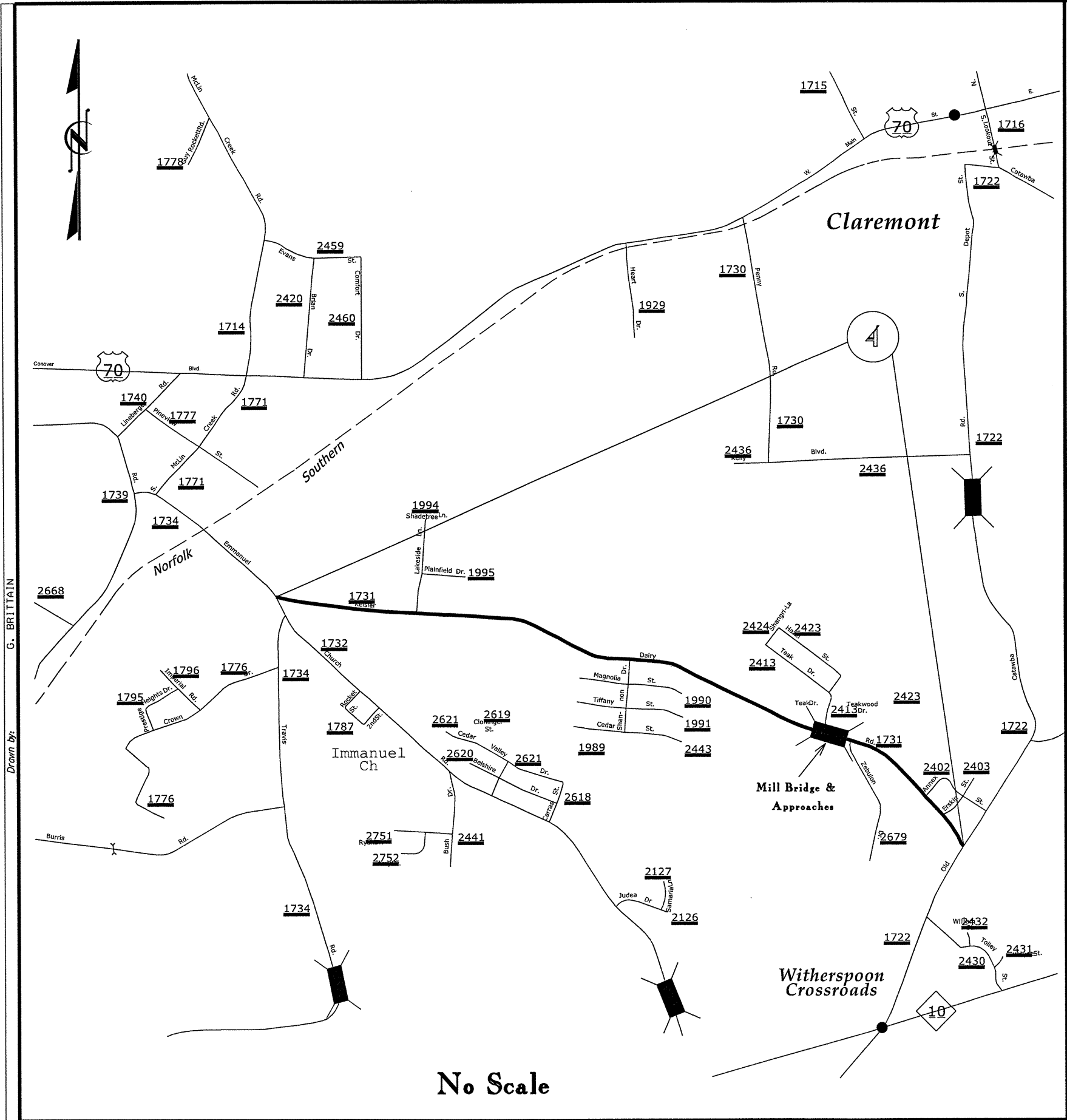
STATE	PROJECT WBS	SHEET
NC	19CR 30181.14	NUMBER
		3



No Scale

2011-2012
Resurfacing Map
CATAWBA COUNTY NC

STATE	PROJECT WBS	SHEET NUMBER
NC	12CR.20181.14	4



No Scale

2011-2012
Resurfacing Map
CATAWBA COUNTY NC

STATE	PROJECT WBS	SHEET NUMBER
NC	12CR.20181.14	5
	12C.018099	

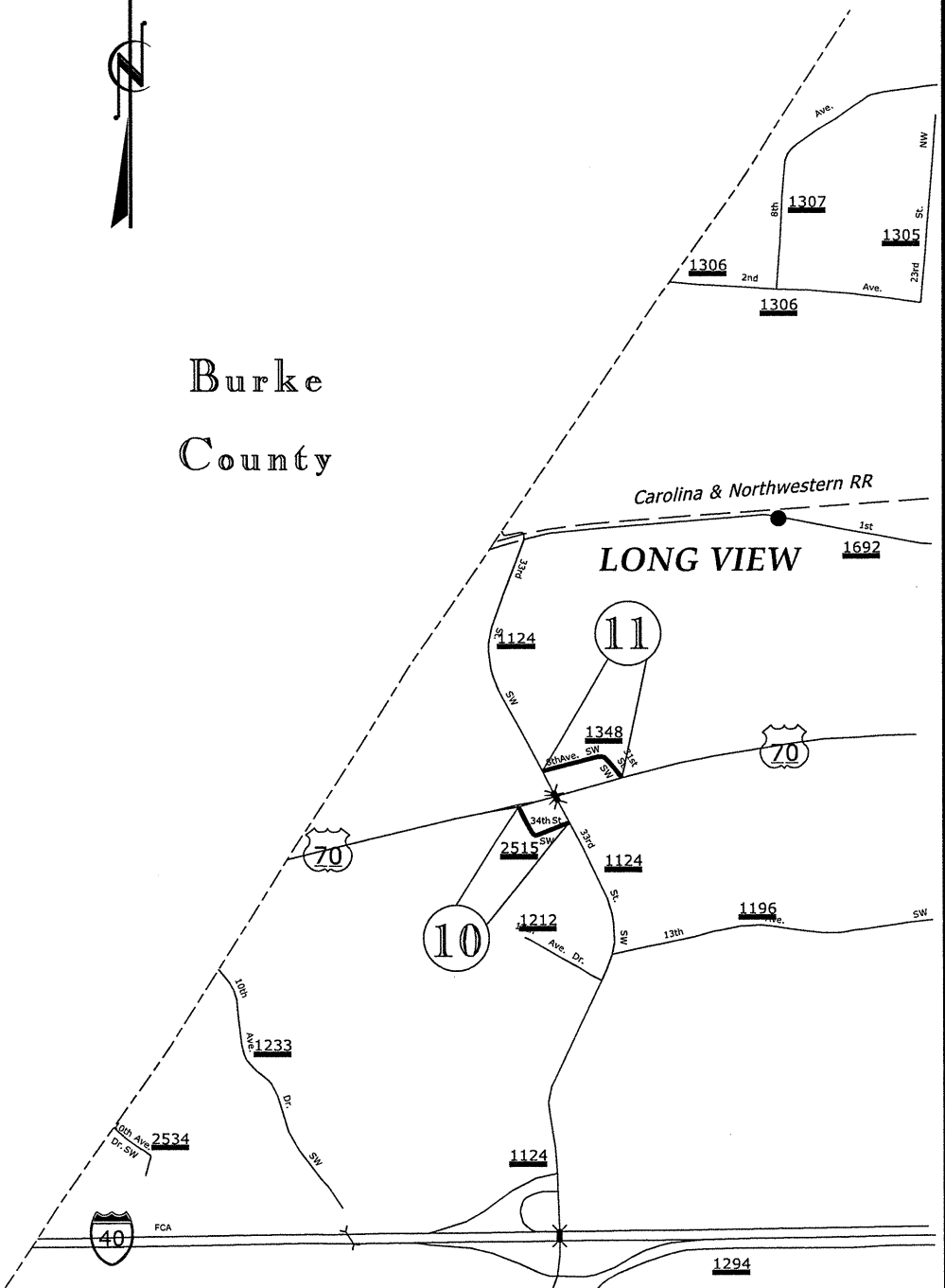
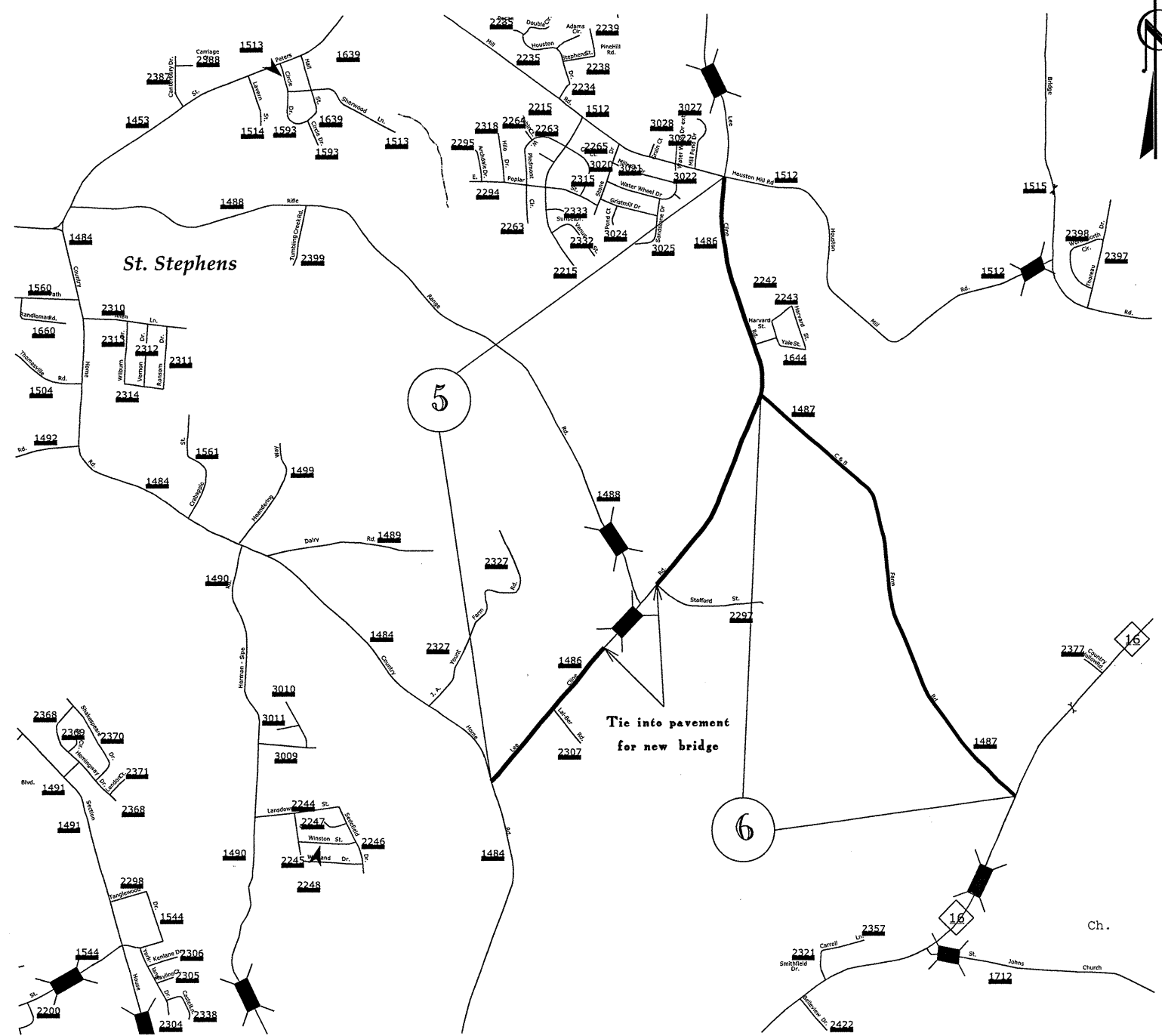
No Scale

Burke
County

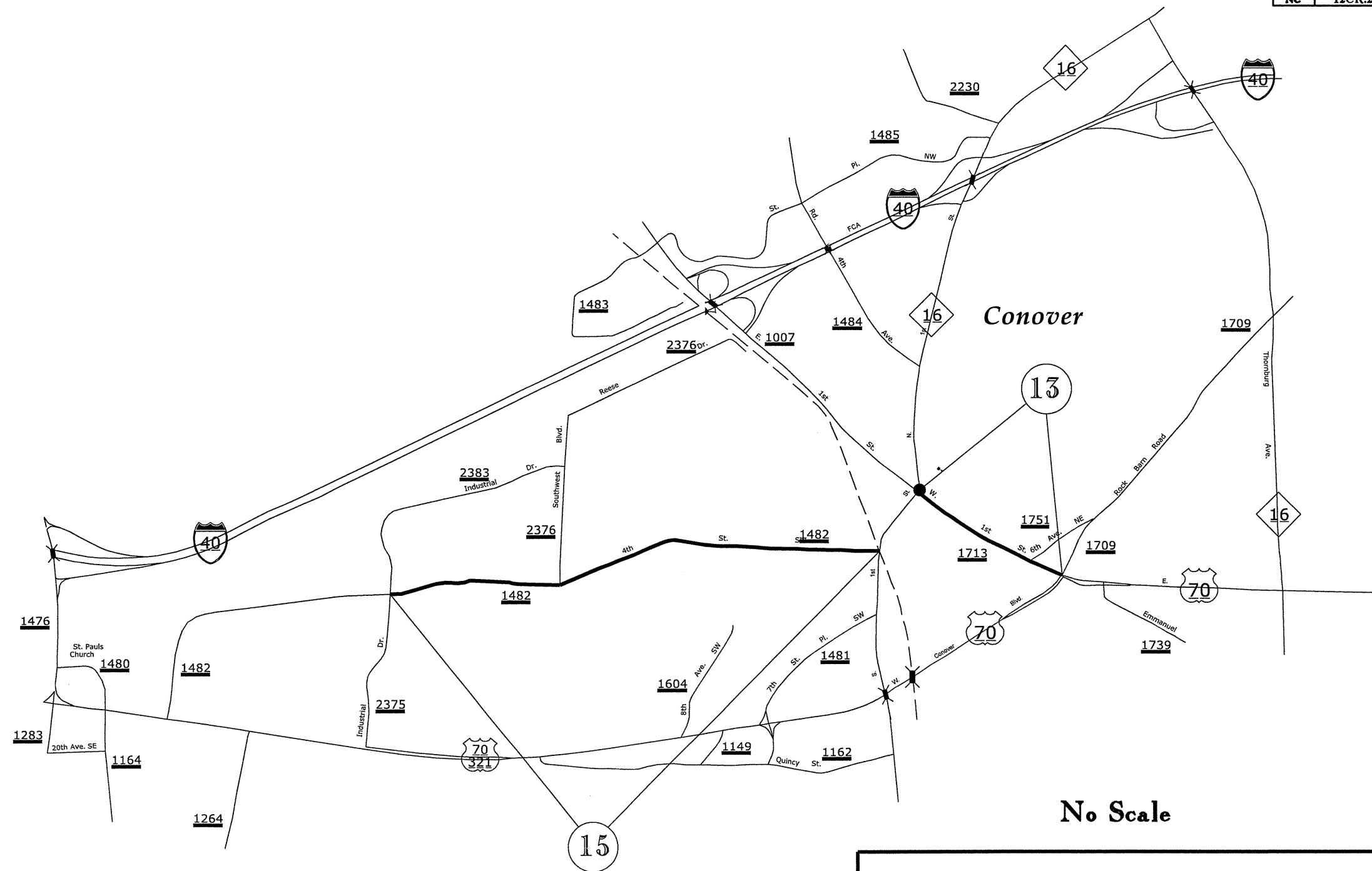
LONG VIEW

2011-2012
Resurfacing Map

CATAWBA COUNTY NC



STATE	PROJECT WBS	SHEET NUMBER
NC	19CR.20181.14	6



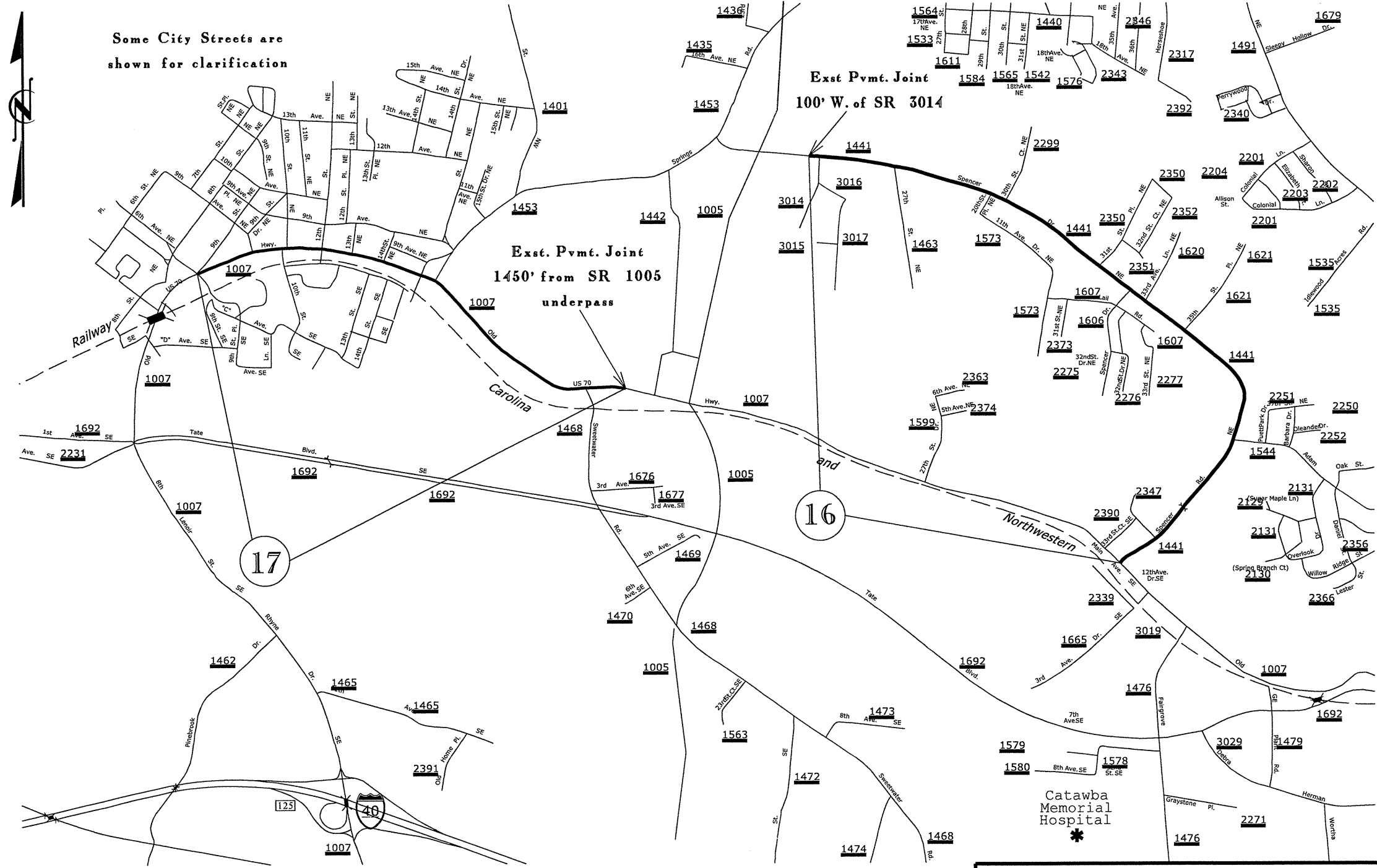
No Scale

2011-2012
Resurfacing Map
CATAWBA COUNTY NC

G. BRITTAIN
Drawn by:

STATE	PROJECT WBS	SHEET NUMBER
NC	12CR.20181.14	7

Some City Streets are shown for clarification



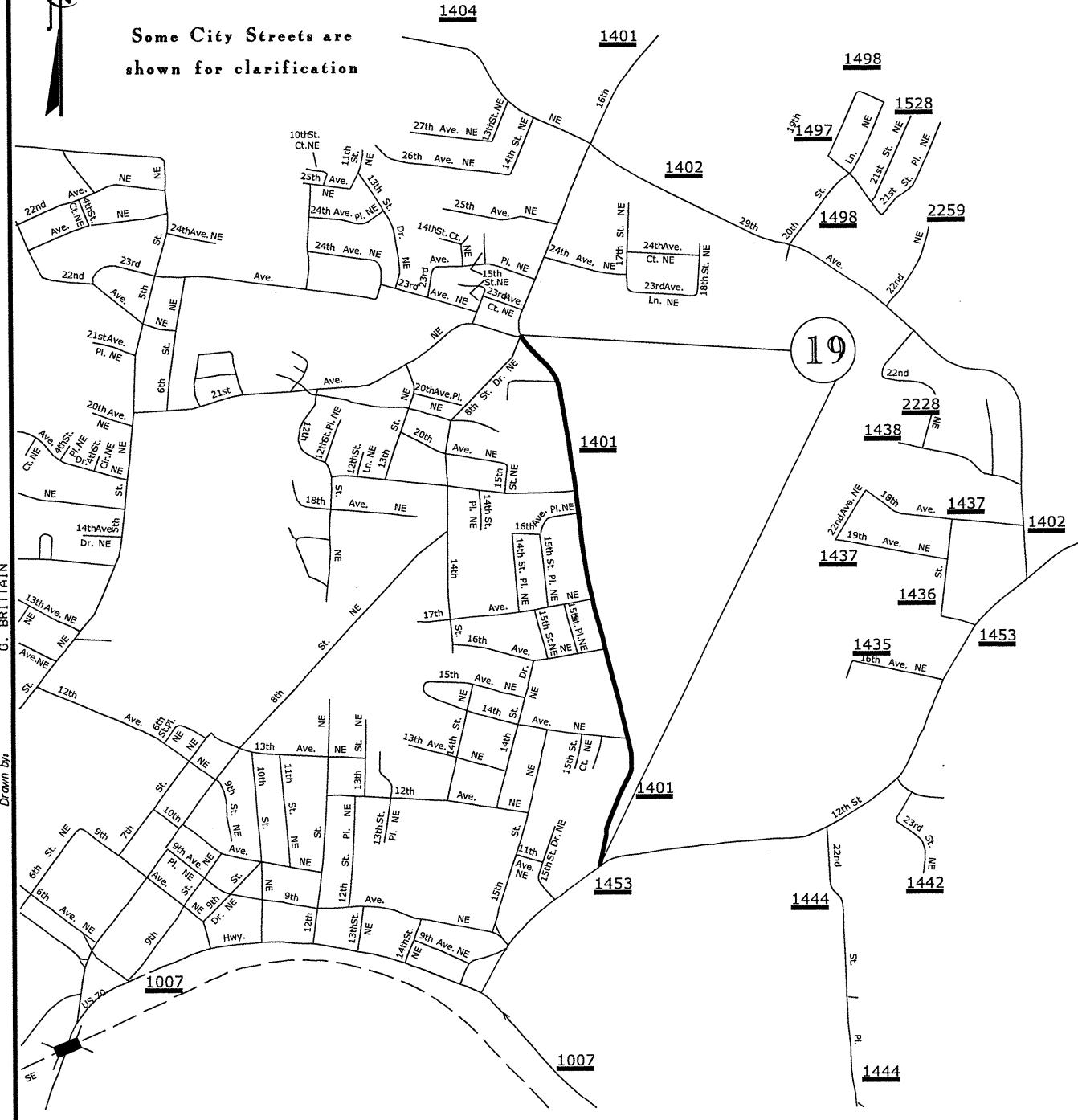
No Scale

2011-2012
Resurfacing Map
CATAWBA COUNTY NC

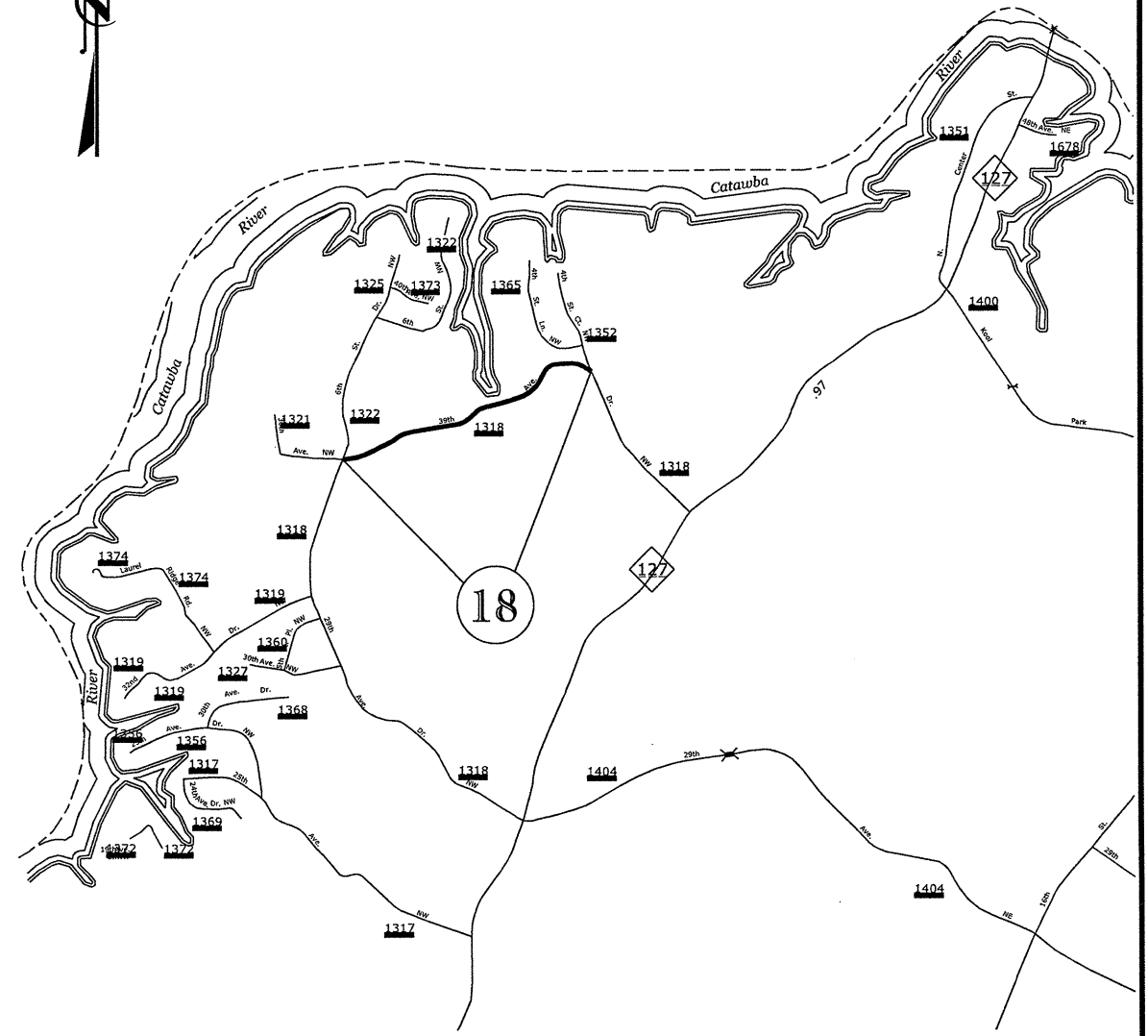
C. BRITAIN
Drawn by:



Some City Streets are shown for clarification



No Scale

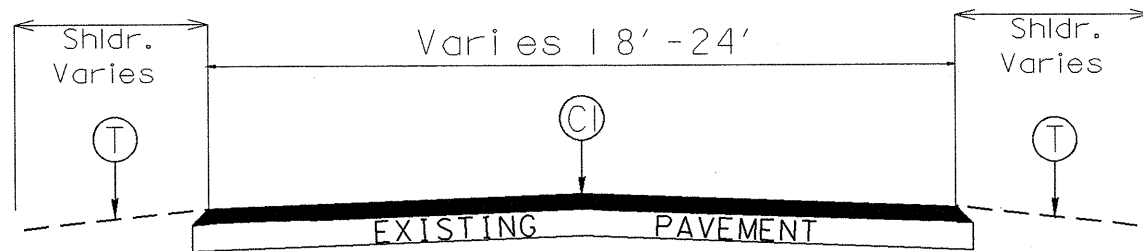


No Scale

2011-2012
Resurfacing Map
CATAWBA COUNTY NC

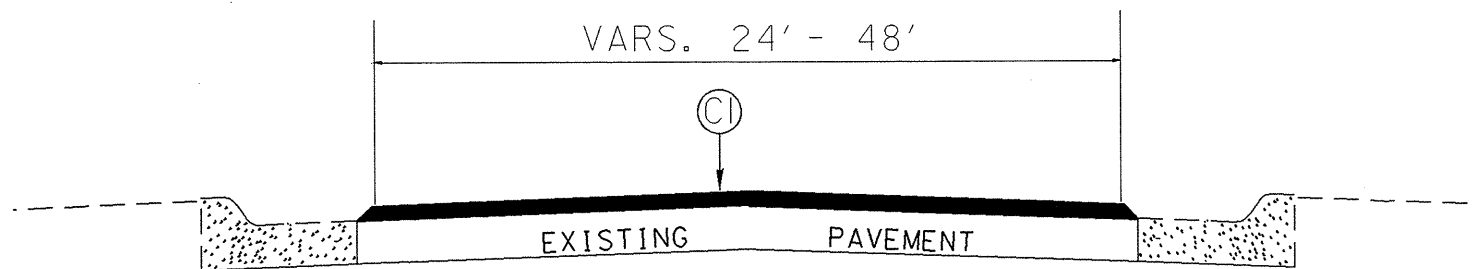
G. BRITTAIN
Drawn by

STATE	PROJECT WBS	SHEET NUMBER
NC	12CR 10181.12	9
	12CR 20181.14	
	12C 018099	



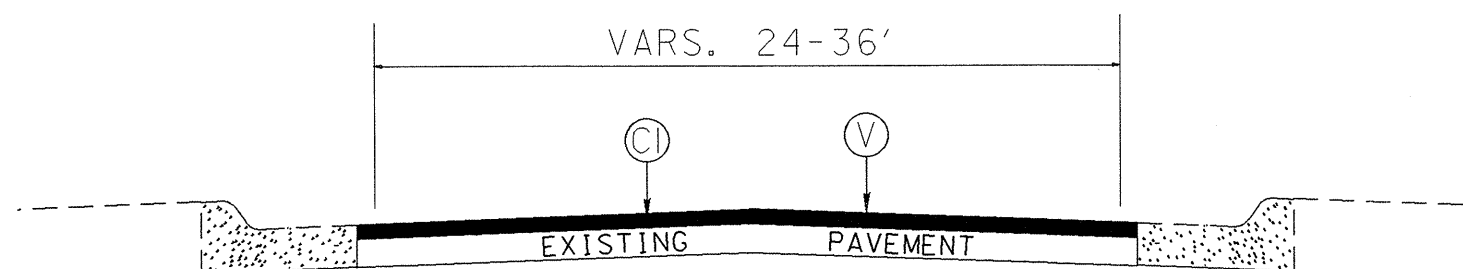
TYPICAL SECTION NO. 1

- MAP # 1 0+00 to 42+00
- MAP # 3 (entire map)
- MAP # 7 (entire map)
- MAP # 8 5+00 to 14+00
- MAP # 9 - 11 (entire map)
- MAP # 14 - 15 (entire map)
- MAP # 17 - 0+00 TO 22+50
29+00 TO 32+00
- MAP # 18 (entire map)
- MAP # 19 - 6+00 TO 47+50
52+50 TO 65+00



TYPICAL SECTION NO. 2

- MAP # 1 - 42+00 TO 58+00
86+50 TO 118+00
- MAP # 6 - 51+00 TO 56+50

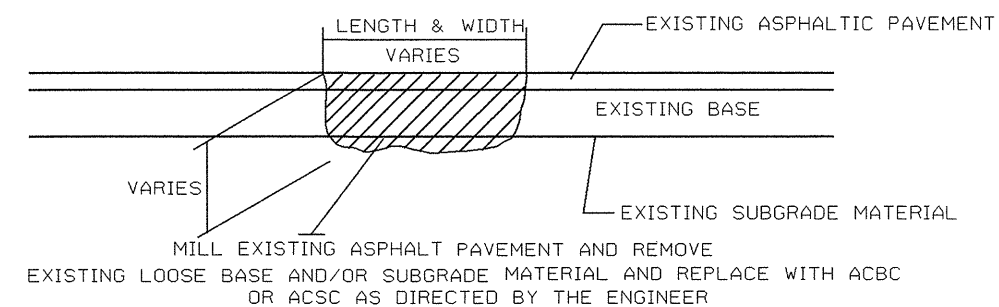


TYPICAL SECTION NO. 3

- MAP # 8 - 37+00 TO 49+00

DETAIL A

PATCHING EXISTING PAVEMENT

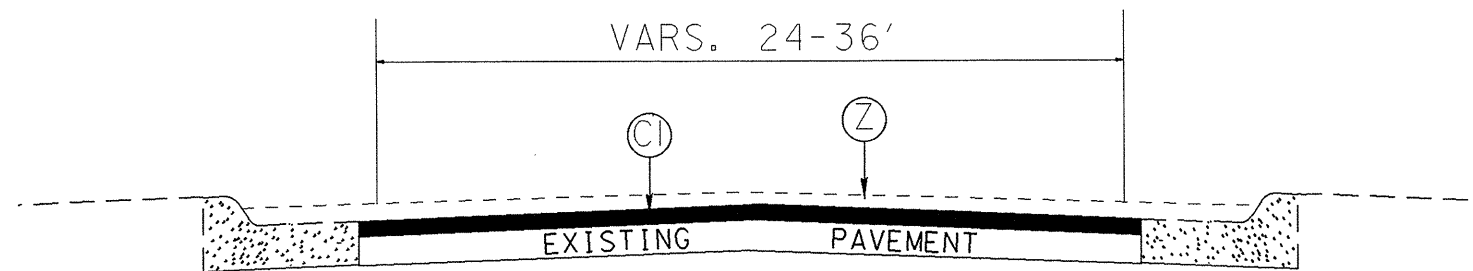


PAVEMENT SCHEDULE	
C1	PROP. APPROX. 1½" ASPHALT CONCRETE SURFACE COURSE, TYPE S9.5B, AT AN AVERAGE RATE OF 168 LBS. PER SQ. YD.
T	AGGREGATE SHOULDER BORROW (SHOULDER RECONSTRUCTION)
V	MILL ASPHALT PVMT. APPROX. 1.5" DEPTH
Z	MILL ASPHALT PVMT. APPROX. 3.0" DEPTH

General Notes:

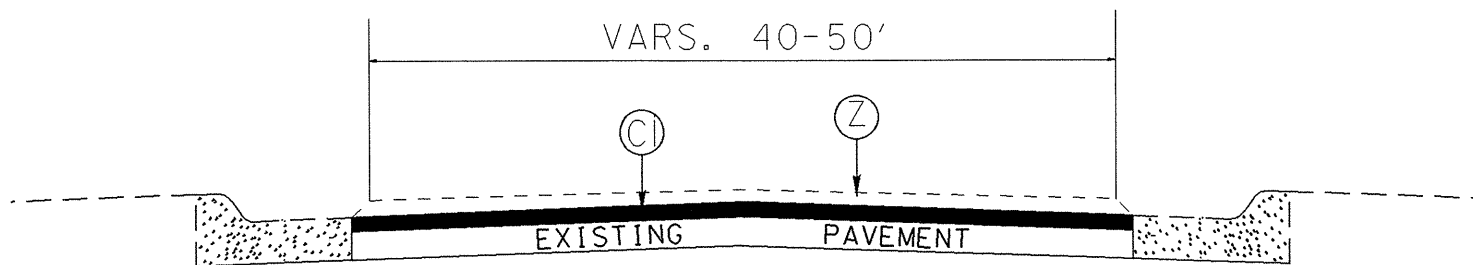
1. Pavement edge slopes are 1:1 unless specified otherwise.
2. Mill bridge approaches 100' to provide a smooth transition or as directed by the Engineer.
3. All stations increase to the North and East except Map # 17 which increase to the West.

2011 - 2012
Resurfacing Program
Typical Sections
Catawba County NC



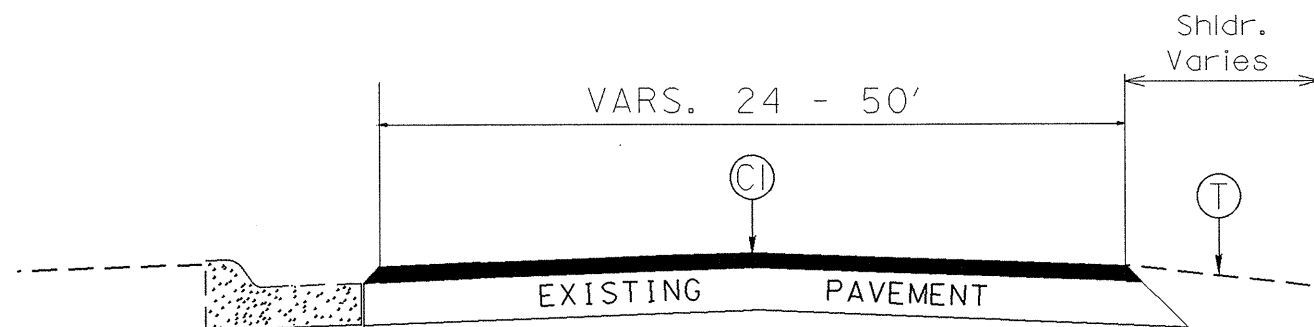
TYPICAL SECTION NO. 4

MAP # 1 - 118+00 TO 147+00
 MAP # 8 - 20+50 TO 37+00
 49+00 TO 58+00
 MAP # 17 - 52+50 TO 85+00



TYPICAL SECTION NO. 5

MAP # 13 (entire map)
 MAP # 17 - 35+50 TO 52+50
 MAP # 19 - 0+00 TO 6+00

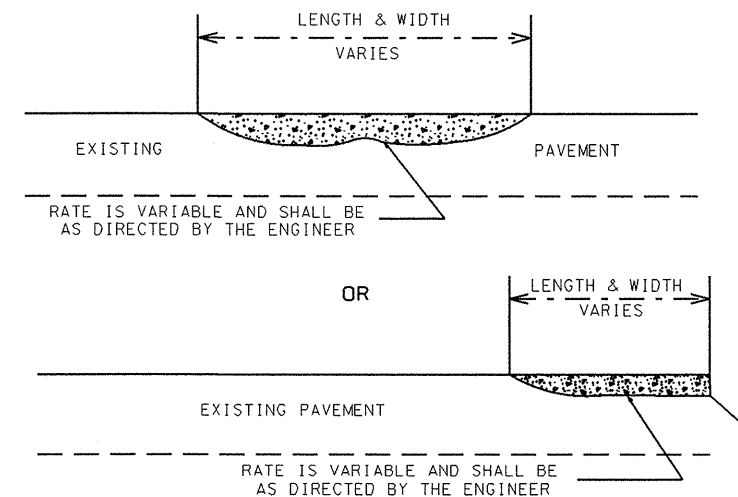


TYPICAL SECTION NO. 6

MAP # 8 - 0+00 TO 5+00
 14+00 TO 20+50

DETAIL B

ASPHALT CONCRETE SURFACE COURSE
 TYPE S9.5B & S 9.5C. (LEVELING COURSE)



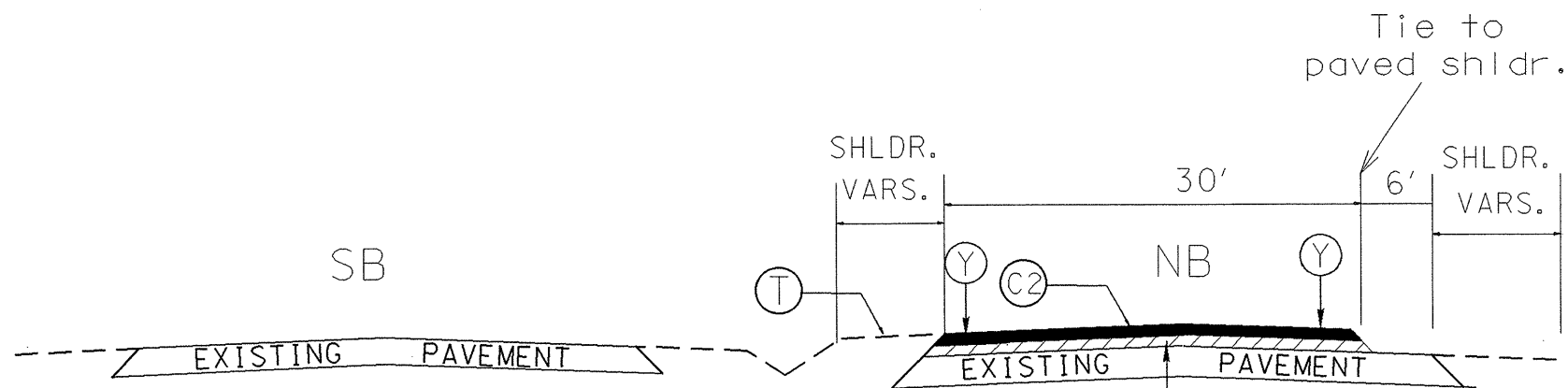
PAVEMENT SCHEDULE	
C1	PROP. APPROX. 1½" ASPHALT CONCRETE SURFACE COURSE, TYPE S9.5B, AT AN AVERAGE RATE OF 168 LBS. PER SQ. YD.
T	AGGREGATE SHOULDER BORROW (SHOULDER RECONSTRUCTION)
V	MILL ASPHALT PVMT. APPROX. 1.5" DEPTH
Z	MILL ASPHALT PVMT. APPROX. 3.0" DEPTH

General Notes:

1. Pavement edge slopes are 1:1 unless specified otherwise.
2. Mill bridge approaches 100' to provide a smooth transition or as directed by the Engineer.
3. All stations increase to the North and East except Map # 17 which increase to the West.

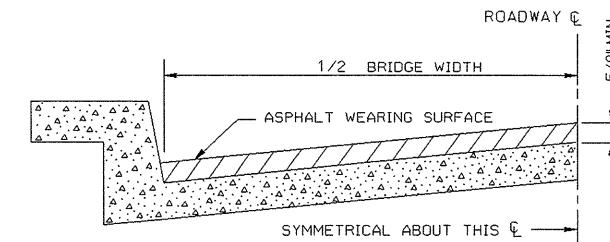
2011 - 2012
 Resurfacing Program
 Typical Sections
 Catawba County NC

STATE	PROJECT WBS	SHEET NUMBER
NC	12CR 10181. 12	11
	12CR 20181. 14	
	12C 018099	



TYPICAL SECTION NO. 7
MAP # 2 (ENTIRE MAP)

DETAIL C
BRIDGE HALF TYPICAL SECTION

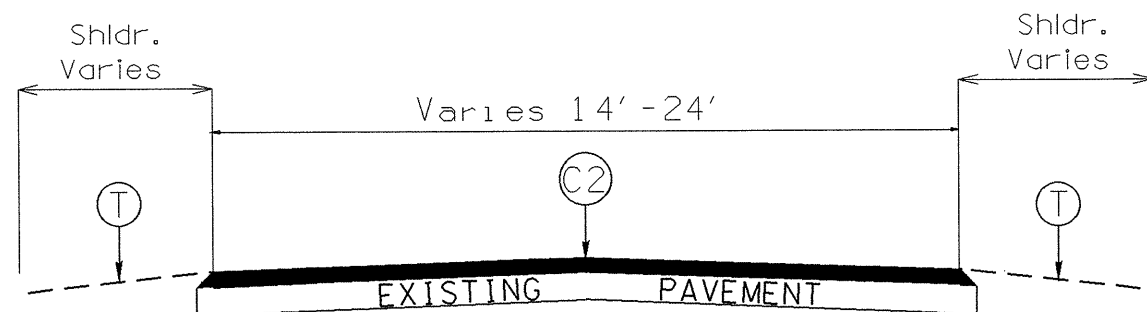


FOR BRIDGES WITH FLOOR DRAINS, CARE SHALL BE EXERCISED IN PLACING THE WEARING SURFACE AROUND FLOOR DRAINS SO AS NOT TO HINDER EFFECTIVE DRAINAGE. ALL DRAINS SHALL BE LEFT OPEN.

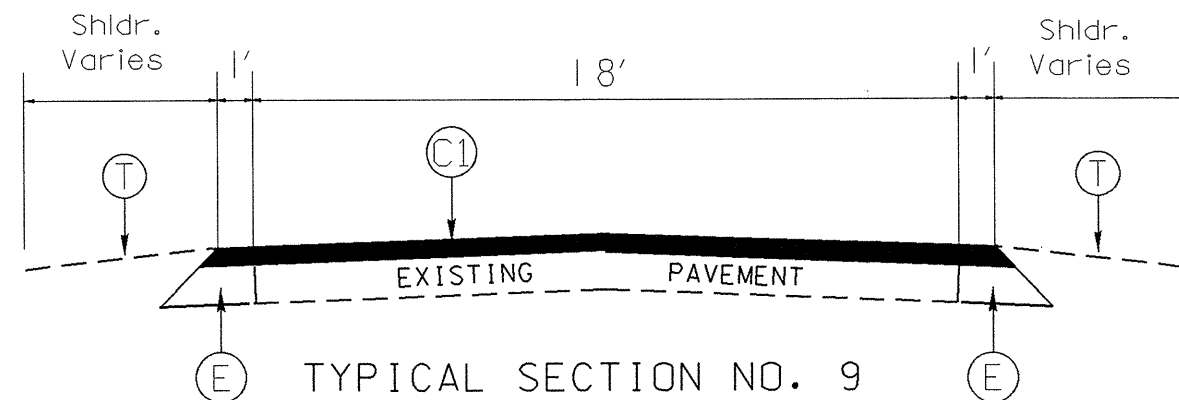
THE PROPOSED WEARING SURFACE SHALL VARY IN THICKNESS AS NECESSARY TO PROVIDE A SMOOTH RIDING SURFACE. A THICKNESS OF NOT LESS THAN 5/8\"/>

NOTES

ALL UNPAVED S.R. ROADS TO BE SURFACED 50' FROM EDGE OF PAVEMENT OF MAIN PROJECT.
ALL PAVED S.R. ROADS TO BE RESURFACED TO THE ENDS OF THE RADII, OR AS DIRECTED BY THE ENGINEER.
EDGES, PAVEMENT WIDENING, INTERSECTIONS AND BRIDGE FLARES ARE INCLUDED IN THE TABLE OF QUANTITIES.
SHOULDERS AND DITCHES ARE TO BE CONSTRUCTED BY OTHERS UNLESS OTHERWISE NOTED.
BRIDGES TO BE RESURFACED AT LOCATIONS AND TO DEPTH AS DIRECTED BY THE ENGINEER.



**US 321 NB
RAMPS TYPICAL SECTION NO. 8**
MAP # 2 (RAMPS ONLY)



TYPICAL SECTION NO. 9
MAP # 4 (ENTIRE MAP)
MAP # 5 (ENTIRE MAP)
MAP # 12 (ENTIRE MAP)

PAVEMENT SCHEDULE	
C1	PROP. APPROX. 1 1/2" ASPHALT CONCRETE SURFACE COURSE, TYPE S9.6B, AT AN AVERAGE RATE OF 168 LBS. PER SQ. YD.
C2	PROP. APPROX. 1 1/2" ASPHALT CONCRETE SURFACE COURSE, TYPE S9.6C, AT AN AVERAGE RATE OF 168 LBS. PER SQ. YD.
E	PROP. APPROX 8" ASPHALT CONCRETE BASE COURSE, TYPE B25.0B, PLACED IN TWO 4" LIFTS AT AN AVERAGE RATE OF 456 LBS PER SQ. YD.
T	AGGREGATE SHOULDER BORROW (SHOULDER RECONSTRUCTION)
Y	MILLED RUMBLE STRIP PER NCDOT STANDARD DWG. 665.01
F	APHALT SURFACE TREATMENT TYPE, POLYMER MODIFIED MATCOAT #6

General Notes:

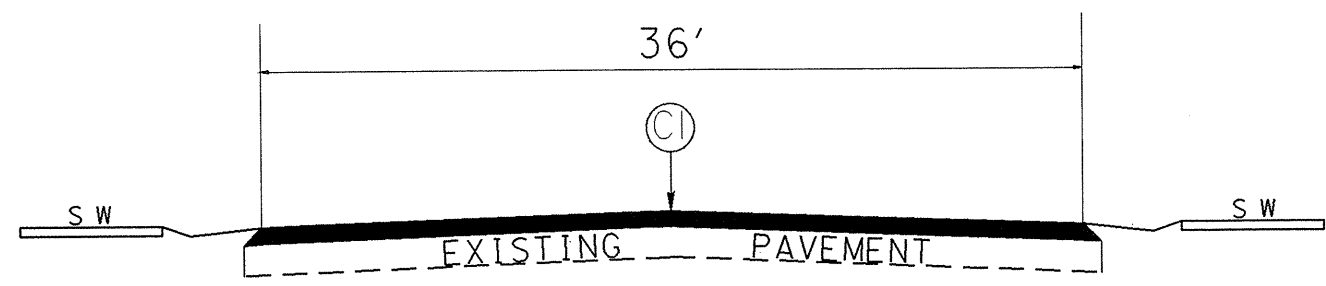
1. Pavement edge slopes are 1:1 unless specified otherwise.
2. Mill bridge approaches 100' to provide a smooth transition or as directed by the Engineer.
3. All stations increase to the North and East except Map # 17 which increase to the West.

2011 - 2012
Resurfacing Program
Typical Sections
Catawba County NC

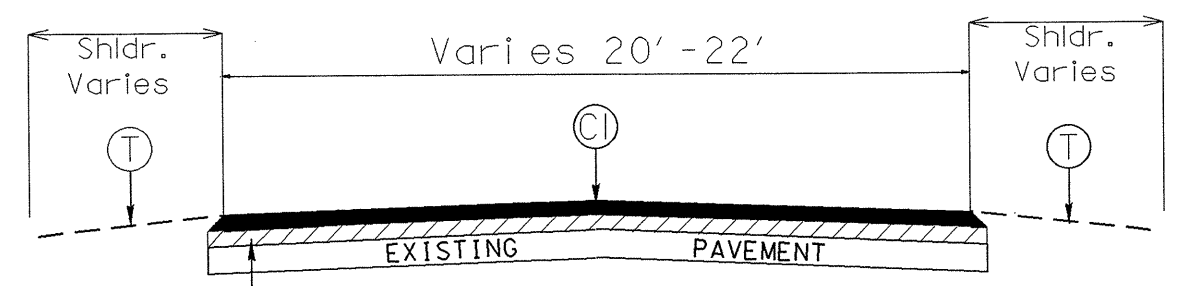
Checked by:

Drawn by: G. Brittain

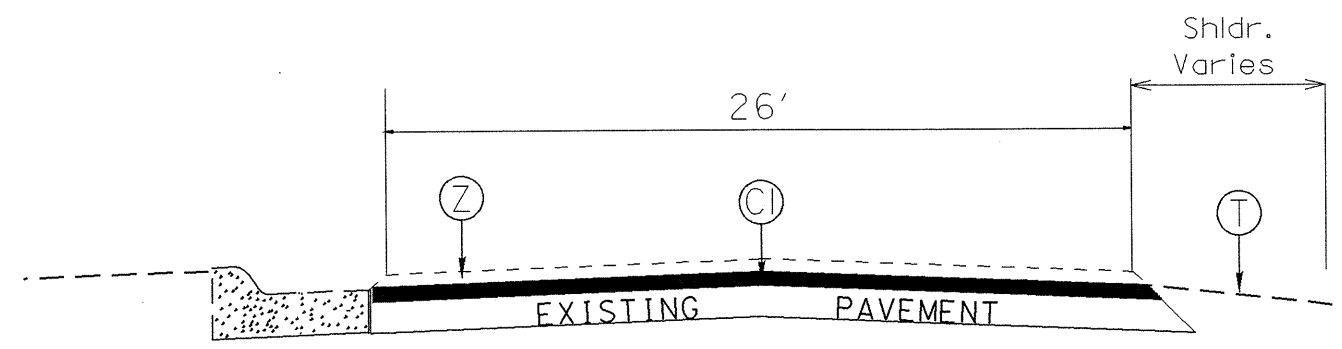
STATE	PROJECT WBS	SHEET NUMBER
NC	12CR 10181.12	12
	12CR 20181.14	
	12C 018099	



TYPICAL SECTION NO. 10
MAP # 1 - 58+00 to 86+50

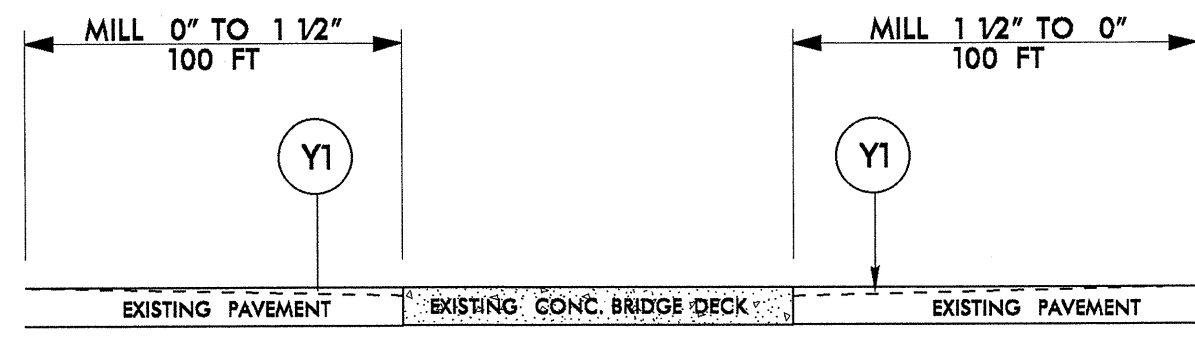


(F) TYPICAL SECTION NO. 11
MAP # 6 - 0+00 to 51+00
56+50 to 94+50
MAP # 16 - (entire map)



TYPICAL SECTION NO. 12
MAP # 17 - 22+50 to 29+00
32+00 to 35+50
MAP # 19 - 47+50 to 52+50

**DETAIL D
MILLING BRIDGE APPROACHES**



PAVEMENT SCHEDULE	
C1	PROP. APPROX. 1 1/2" ASPHALT CONCRETE SURFACE COURSE, TYPE 89.5B, AT AN AVERAGE RATE OF 168 LBS. PER SQ. YD.
F	APHALT SURFACE TREATMENT TYPE, POLYMER MODIFIED MATCOAT #6
T	AGGREGATE SHOULDER BORROW (SHOULDER RECONSTRUCTION)
Y1	INCIDENTAL MILLING
Z	MILL ASPHALT PAVEMENT APPROX. 3.0" IN DEPTH

General Notes:

- Pavement edge slopes are 1:1 unless specified otherwise.
- Mill bridge approaches 100' to provide a smooth transition or as directed by the Engineer.
- All stations increase to the North and East except Map # 17 which increase to the West.

2011 - 2012
Resurfacing Program
Typical Sections
Catawba County NC

Checked By: _____
Drawn By: G. Brittain

PROJECT NO.	SHEET NO.	TOTAL NO.
12c.018099, 12cr.10181.12	13	14
12cr.20181.14,		

SUMMARY OF QUANTITIES

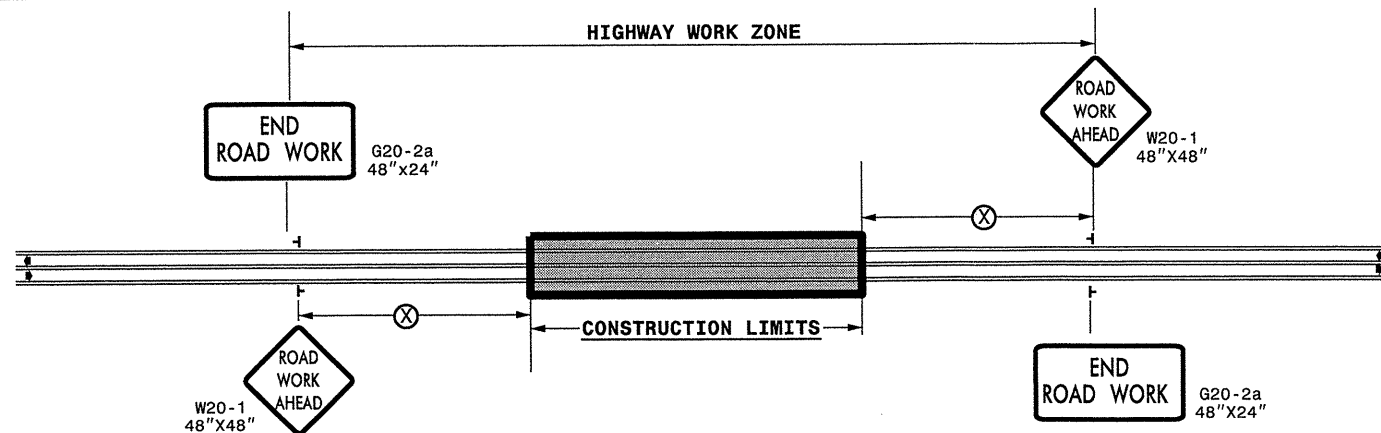
PROJECT NO	COUNTY	MAP NO	ROUTE	DESCRIPTION	TYP	FINAL SURFACE TESTING REQUIRED	LENGTH MI	WIDTH FT	INCIDENTAL STONE BASE TONS	AGGREGATE SHOULDER BORROW TON	SHOULDER RECONSTRUCTION SMI	3" MILLING SY	1 1/2" MILLING SY	INCIDENTAL MILLING SY	BASE COURSE, B25.0B TONS	SURFACE COURSE, S9.5B TONS	LEVELING COURSE, S9.5B TONS	SURFACE COURSE, S9.5C TONS	LEVELING COURSE, S9.5C TONS	ASPHALT BINDER FOR PLANT MIX TONS	PATCHING EXISTING PAVEMENT TONS	AST MAT COAT # STONE SY	MILLED RUMBLE STRIPS LF	ADJ. OF CATCH BASINS EA	ADJ. OF DROP INLETS EA	ADJ. OF MANHOLES EA	ADJ. OF METER OR VALVE BOXES EA		
12c.018099	Catawba	5	SR 1486 (LEE CLINE RD)	FROM SR 1484 TO SR 1512	9	NO	2.4	20	100	182	4.80				1,900	2,666	400			270	300								
TOTAL FOR PROJ NO. 12c.018099							2.4		100	182	4.80				1,900	2,666	400			270	300								
12cr.10181.12	Catawba	1	US 321 BUS	FROM LINCOLN COUNTY TO SR 1880	1,2,4,10	NO	3	VAR. 22-36	60	78	2.05	11,600		750		4,820	500			322	500				1	25	20		
12cr.10181.12	Catawba	2	US 321	FROM NC 127 TO BRIDGE #326	7,8	NO	4.5	30	100	208	5.50			400				8,924	750	575	1,800	79,200	47,520						
TOTAL FOR PROJ NO. 12cr.10181.12							7.5		160	286	7.55	11,600			1,150		4,820	500			8,924	750	897	2,300	79,200	47,520	1	25	20
12cr.20181.14	Catawba	3	SR 1880 (STJAMES\MAYS CHPL RD)	FROM US 321 BUS TO NC 10	1	NO	6.05	21	200	458	12.10			350		6,928	350			438	700							1	
12cr.20181.14	Catawba	4	SR 1731 (KIESLER DAIRY RD)	FROM SR 1734 TO SR 1722	9	NO	2.41	20	100	175	4.62			550	1,950	2,677	300			266	400							3	
12cr.20181.14	Catawba	6	SR 1487 (C&B FARM RD)	FROM SR 1486 TO NC 16	2,11	NO	1.79	VAR. 20-40	60	135	3.58					2,172	200			143	400	22,053						1	
12cr.20181.14	Catawba	7	SR 1884 (SMYRE FARM RD)	FROM SR 1880 TO NC 16	1	NO	1.88	22	40	142	3.76					2,296	250			154	600								
12cr.20181.14	Catawba	8	SR 1358 (4TH AVE SW)	FROM US 70 TO SR 1314	1,3,4,6	NO	1.1	VAR. 24-50	40	26	0.68	8,400	6,267			2,123	200			140	600					30	16		
12cr.20181.14	Catawba	9	SR 1465 (11TH AVE SE)	FROM SR 1007 TO END MAINT.	1	NO	0.63	22	40							786	80			52	150								
12cr.20181.14	Catawba	10	SR 2515 (10TH AVE SW L.V.)	FROM SR 1124 TO US 70 EB	1	NO	0.15	21	10	11	0.30					172	20			12	50								
12cr.20181.14	Catawba	11	SR 1348 (8TH AVE SW L.V.)	FROM SR 1124 TO US 70 WB	1	NO	0.19	20	10	14	0.38					207	20			14	40					2	1		
12cr.20181.14	Catawba	12	SR 1882 (JACK WHITENER RD)	FROM SR 1883 TO SR 1880	9	NO	1.58	20	60	120	3.16				1,250	1,724	200			171	350								
12cr.20181.14	Catawba	13	SR 1713 (1ST ST CONOVER)	FROM US 70 TO NC 16	5	NO	0.47	VAR. 44-50				12,800				1,145	120			77	150					6	5		
12cr.20181.14	Catawba	14	SR 1872 (4TH AVE MAIDEN)	FROM US 321B TO SR 1810	1	NO	1.03	19	40	78	2.06					1,068	150			74	120								
12cr.20181.14	Catawba	15	SR 1482 (4TH ST CONOVER)	FROM NC 16 TO SR 2383	1	NO	1.41	22	80	107	2.82					1,761	300			125	650					11	20		
12cr.20181.14	Catawba	16	SR 1441 (SPENCER RD)	FROM 1007 TO PVMT JT 100' NW OF SR 3014	11	NO	2.41	22	120	182	4.82					2,890	300			193	600	31,105						7	
12cr.20181.14	Catawba	17	SR 1007 (HIGHLAND AVE)	FROM PVMT. JT 1450 W. OF SR 1005 TO EXT. PVMT. JOINT 150' EAST OF 8TH AVE. NE	1,4,5,12	NO	1.61	VAR. 22-40	40	44	1.15	20,250				2,418	250			161	600			5		15	13		
12cr.20181.14	Catawba	18	SR 1318 (39TH AVE DR NW HKY)	FROM SR 1321 TO SR 1352	1	NO	0.8	18	40	60	1.60					786	200			60	350					2			
12cr.20181.14	Catawba	19	SR 1401 (16TH ST. NE HKY)	FROM SR 1453 TO 8TH ST. DR NE	1,5,12	NO	1.23	VAR. 24-48	60	84	2.23	1,450				1,836	180			122	320					2	10		
TOTAL FOR PROJ NO. 12cr.20181.14							24.74		940	1,636	43.26	42,900	6,267	900	3,200	30,989	3,120			2,202	6,080	53,158	5	1	96	94			
GRAND TOTAL							34.64		1,200	2,104	55.61	54,500	6,267	2,050	5,100	38,475	4,020	8,924	750	3,369	8,680	132,358	47,520	5	1	96	94		

PROJECT NO.	SHEET NO.	TOTAL NO.
12c.018099, 12cr.10181.12 12cr.20181.14,	14	14

THERMOPLASTIC AND PAINT QUANTITIES

PROJECT NO	COUNTY	MAP NO	ROUTE	DESCRIPTION	LENGTH	WIDTH	4685000000-E	4697000000-E	4686000000-E		4688000000-E		4690000000-E	4700000000-E	4705000000-E	4710000000-E	4721000000-E			4725000000-E					4810000000-E		4905000000-N		
							4" X 90 M WHITE THERMO LF	8" X 120 M WHITE THERMO LF	4" X 120 M YELLOW THERMO LF	4" X 120 M WHITE THERMO LF	6" X 90M WHITE THERMO LF	6" X 90M YELLOW THERMO LF	6" X 120M WHITE THERMO LF	12" X 90 M WHITE THERMO LF	16" X 120 M WHITE THERMO LF	24" X 120 M WHITE THERMO LF	THERMO MSG SCHOOL 120 M EA	THERMO MSG ONLY 120 M EA	THERMO RKR 120 M EA	THERMO LT ARROW 90 M EA	THERMO RT ARROW 90 M EA	THERMO STR & RT ARROW 90 M EA	THERMO STR ARROW 90 M EA	THERMO STR & LT ARROW 90 M EA	4" WHITE PAINT LF	4" YELLOW PAINT LF	SNOW PLOWABLE MARKERS EA		
12c.018099	Catawba	5	SR 1486 (LEE CLINE RD)	FROM SR 1484 TO SR 1512	2.4	20																				51,250	50,500		
TOTAL FOR PROJ NO. 12c.018099							2.4																			51,250	50,500		
																									101,750				
12cr.10181.12	Catawba	1	US 321 BUS	FROM LINCOLN COUNTY TO SR 1880	3	VAR. 22-36	10,800	500	29,750	750																		250	
12cr.10181.12	Catawba	2	US 321	FROM NC 127 TO BRIDGE #326	4.5	30			28,500	28,500	6,250	2,400																475	
TOTAL FOR PROJ NO. 12cr.10181.12							7.5	500	29,750	750	28,500	28,500	6,250	2,400														725	
									30,500		57,000																		
12cr.20181.14	Catawba	3	SR 1880 (STJAMES/MAYS CHPL RD)	FROM US 321 BUS TO NC 10	6.05	21										14											128,000	127,750	
12cr.20181.14	Catawba	4	SR 1731 (KIESLER DAIRY RD)	FROM SR 1734 TO SR 1722	2.41	20		50																		49,500	50,750		
12cr.20181.14	Catawba	6	SR 1487 (C&B FARM RD)	FROM SR 1486 TO NC 16	1.79	VAR. 20-40										114	12			2						38,250	37,850	140	
12cr.20181.14	Catawba	7	SR 1884 (SMYRE FARM RD)	FROM SR 1880 TO NC 16	1.88	22										16										39,850	39,500		
12cr.20181.14	Catawba	8	SR 1358 (4TH AVE SW)	FROM US 70 TO SR 1314	1.1	VAR. 24-50	4,500	360	12,000	1,200					200	525		8	8	15	6	8	12	4		13,200	13,200		
12cr.20181.14	Catawba	9	SR 1465 (11TH AVE SE)	FROM SR 1007 TO END MAINT.	0.63	22										30				2	2					3,200	3,100		
12cr.20181.14	Catawba	10	SR 2515 (10TH AVE SW L.V.)	FROM SR 1124 TO US 70 EB	0.15	21																				4,050	3,950		
12cr.20181.14	Catawba	11	SR 1348 (8TH AVE SW L.V.)	FROM SR 1124 TO US 70 WB	0.19	20																				33,500	33,350		
12cr.20181.14	Catawba	12	SR 1882 (JACK WHITENER RD)	FROM SR 1883 TO SR 1880	1.58	20																							
12cr.20181.14	Catawba	13	SR 1713 (1ST ST CONOVER)	FROM US 70 TO NC 16	0.47	VAR. 44-50			2,450	1,600						75				7	3	2				21,750	21,500	110	
12cr.20181.14	Catawba	14	SR 1872 (4TH AVE MAIDEN)	FROM US 321B TO SR 1810	1.03	19										20										30,000	28,500		
12cr.20181.14	Catawba	15	SR 1482 (4TH ST CONOVER)	FROM NC 16 TO SR 2383	1.41	22									50	37			2							51,250	50,750		
12cr.20181.14	Catawba	16	SR 1441 (SPENCER RD)	FROM 1007 TO PVMT JT 100' NW OF SR 3014	2.41	22																							
12cr.20181.14	Catawba	17	SR 1007 (HIGHLAND AVE)	FROM PVMT. JT 1450 W. OF SR 1005 TO EXST. PVMT. JOINT 150' EAST OF 8TH AVE. NE	1.61	VAR. 22-40	5,100	460	9,350	1,500						144				4	10	4	6	12	6	16,750	16,600	140	
12cr.20181.14	Catawba	18	SR 1318 (39TH AVE DR NW HKY)	FROM SR 1321 TO SR 1352	0.8	18															10	3	7		3		429,300	426,800	125
12cr.20181.14	Catawba	19	SR 1401 (16TH ST. NE HKY)	FROM SR 1453 TO 8TH ST. DR NE	1.23	VAR. 24-48	12,000		12,900	500						120				12	12	10	23	24	13	429,300	426,800	515	
TOTAL FOR PROJ NO. 12cr.20181.14							24.74	870	21,600	36,700	4,800				250	1,095	12	12	10	46	18	23	24	13		429,300	426,800	515	
									41,500																				
GRAND TOTAL					34.64		32,400	1,370	66,450	5,550	28,500	28,500	6,250	2,400	250	1,270	12	12	10	63	25	25	30	13	480,550	477,300	1,240		
									72,000		57,000																		
																									957,850				

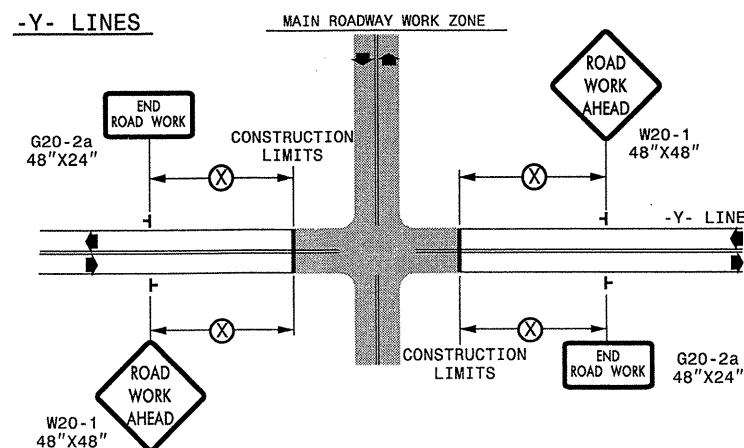
TWO-WAY UNDIVIDED ** (L-LINES)



POSTED SPEED LIMIT (M.P.H.)	RECOMMENDED MINIMUM SIGN SPACING
≤ 50	500'
≥ 55	1000'

STATE OF NORTH CAROLINA
DEPT. OF TRANSPORTATION
DIVISION OF HIGHWAYS
RALEIGH, N.C.

ROADWAYS INTERSECTING ALONG 2 WAY UNDIVIDED WORK ZONE (Y-LINES)



DETAIL DRAWING FOR
TWO-WAY UNDIVIDED
WORK ZONE WARNING SIGNS

GENERAL NOTES


- USE FLUORESCENT ORANGE SHEETING (TYPE VII OR HIGHER) ON ALL ADVANCED WORK ZONE SIGNS.
- DO NOT INSTALL ADVANCE WARNING SIGNS MORE THAN 3 DAYS PRIOR TO BEGINNING OF WORK.
- SIGNS SHOWN ARE REQUIRED FOR WORK ZONES THAT WILL REMAIN IN EFFECT OVERNIGHT. FOR SHORT-TERM DAILY MAINTENANCE TYPE OPERATIONS, THIS SIGNING APPLICATION IS OPTIONAL; MAY USE ONLY APPLICABLE ROADWAY STANDARD DRAWINGS INSTEAD. HOWEVER, IF THIS SIGNING APPLICATION IS USED, SIGNS MAY BE PORTABLE MOUNTED.
- ALL SIGN SPACING DIMENSIONS ARE APPROXIMATE, FIELD ADJUST AS NECESSARY OR AS DIRECTED.
- USE 3LB STEEL U-CHANNEL POST OR 4" X 4" WOOD POST FOR ALL WORK ZONE SIGNS. 3LB STEEL U-CHANNEL POSTS MUST MEET THE REQUIREMENTS OF STANDARD SPECIFICATION SECTION 1094-1(B), MAY BE GALVANIZED STEEL, OR MAY BE PAINTED GREEN BY THE POST MANUFACTURER. SQUARE STEEL TUBING POSTS HAVING EQUIVALENT STRENGTH OF THE 3 LB STEEL U-CHANNEL POST ARE ALSO ACCEPTABLE FOR USE. ERECT SIGNS PER ROADWAY STANDARD DRAWING 1110.01. PAYMENT FOR WOOD POSTS, 3LB STEEL U-CHANNEL AND SQUARE STEEL TUBING POSTS WITH SIGNS WILL BE MADE ACCORDING TO STANDARD SPECIFICATION "WORK ZONE SIGNS" SECTION 1110.
- WHEN NECESSARY, USE SPLICING IN ACCORDANCE WITH ROADWAY STANDARD DRAWING NO. 1110.01. REMOVE ENTIRE POST WHEN REMOVING SIGNS WITH SPLICED POSTS.
- DO NOT BACK BRACE SIGN SUPPORTS.
- ** TWO-WAY UNDIVIDED ADVANCE WARNING SIGN CONFIGURATION MAY BE USED ON URBAN MULTI-LANE FACILITIES WHERE CONDITIONS LIMIT THE USE OF DUAL MOUNTED SIGNS AS DETERMINED BY THE ENGINEER.

LEGEND

┆ STATIONARY SIGN

◀ DIRECTION OF TRAFFIC FLOW

SHEET 1 OF 1

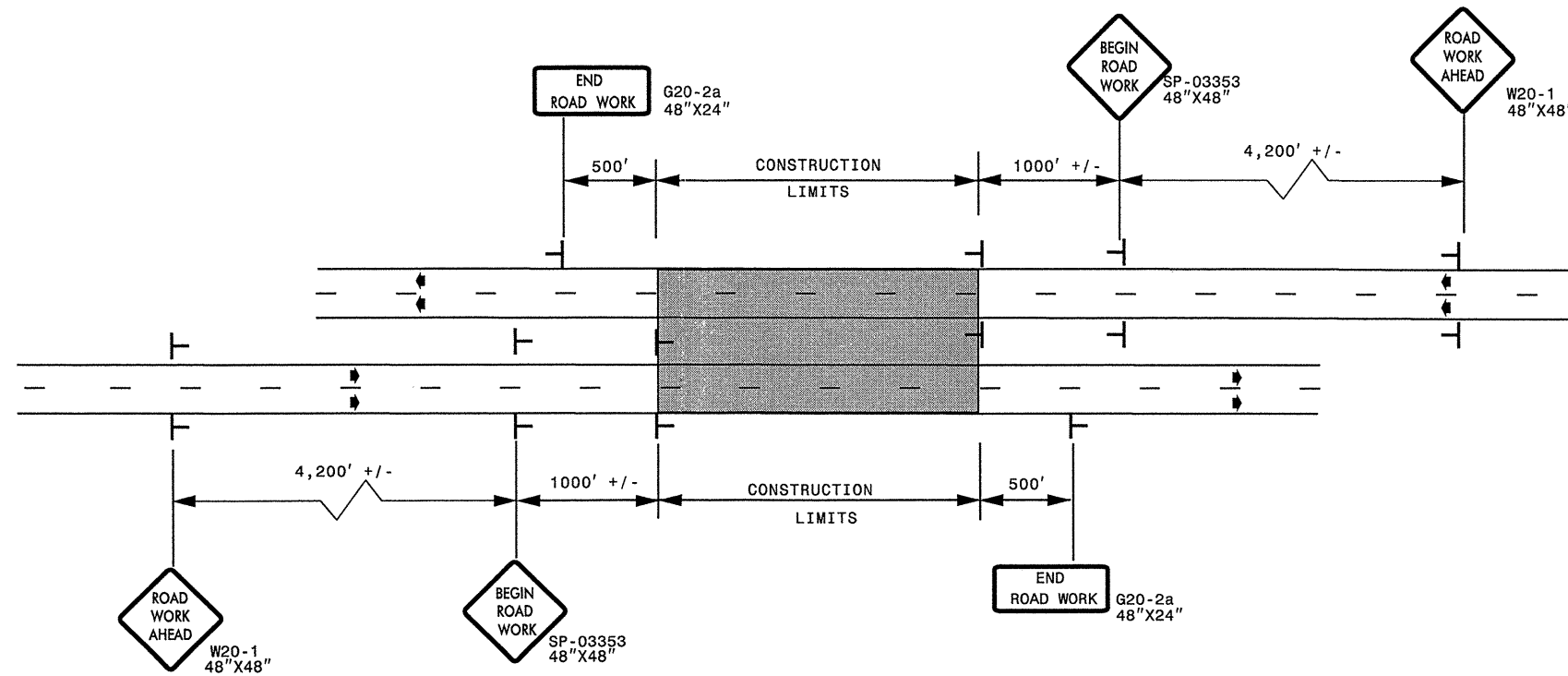
APPROVED: _____	DATE: _____	DETAIL DRAWING FOR TWO-WAY UNDIVIDED AND URBAN FREEWAYS ADVANCED WORK ZONE WARNING SIGNS	
			
		SCALE: NONE	
DATE: _____		10-98	03/04
DWG. BY: _____		01/01	11/04
DESIGN BY: _____		CADD	FILE
REVIEWED BY: _____			

05-001-20110401
 C:\DESIGN\GROUPS-WZTC\TCC\TMU\WZTC\Resur\facimg\2011\Div2\C202872A-C-12CR.10181.2x3-Catowba-2way_Undiv-&Urban_Frways_stationary.dgn
 12/24/13
 sngreen AT

ADVANCED WORK ZONE WARNING SIGNING FOR FREEWAYS (4 LANES OR GREATER)

PROJ. REFERENCE NO.	SHEET NO.
12C.018099 12CR.10181.12 12CR.20181.14	TCP-2

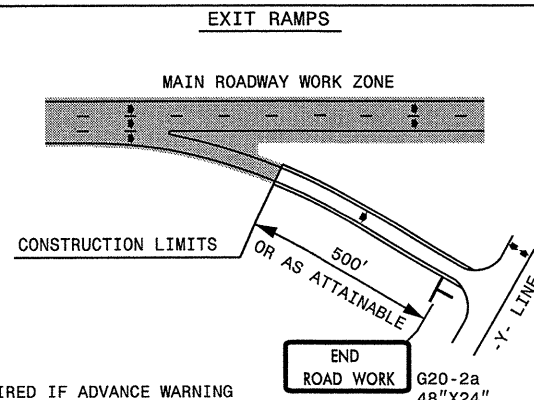
DETAIL A



LEGEND	
	STATIONARY SIGN
➔	DIRECTION OF TRAFFIC FLOW

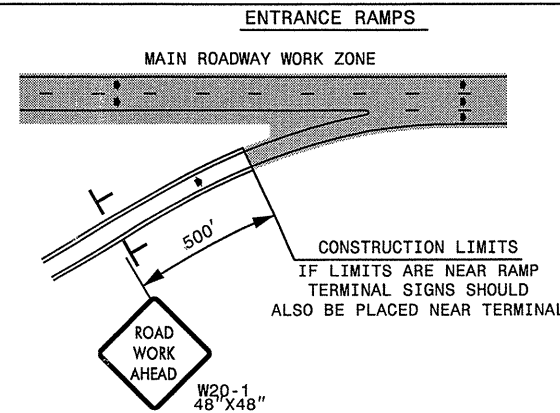
* USE THE "\$250 SPEEDING PENALTY" SIGN, SPEED LIMIT SIGN, AND ORANGE PANEL; ONLY WHEN A "\$250 SPEEDING PENALTY" ORDINANCE HAS BEEN ISSUED BY THE REGIONAL TRAFFIC ENGINEER.

DETAIL B

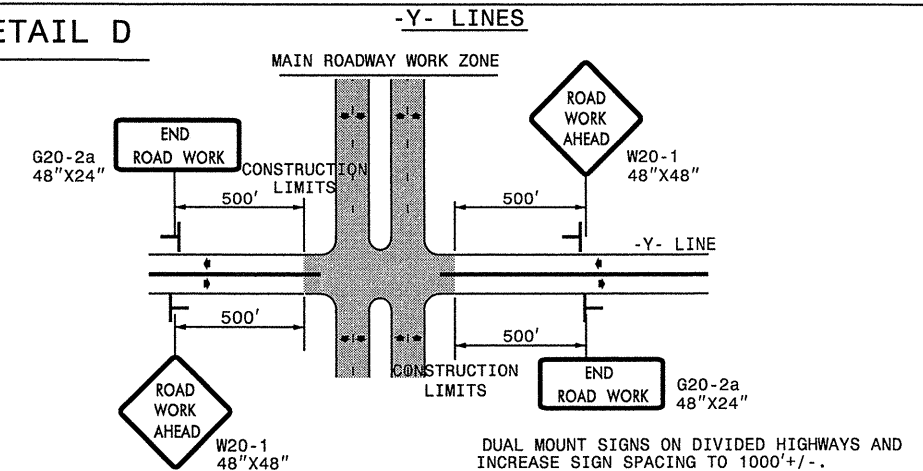


NOTE: SIGN NOT REQUIRED IF ADVANCE WARNING SIGNS HAVE BEEN PLACED ALONG -Y- LINE THAT RAMP INTERSECTS. IF CONSTRUCTION LIMITS ARE AT END OF RAMP, PLACE SIGN AT END OF RAMP.

DETAIL C



DETAIL D



GENERAL NOTES

- USE FLUORESCENT ORANGE SHEETING (TYPE VII OR HIGHER) ON ALL ADVANCED WORK ZONE SIGNS.
- DO NOT INSTALL ADVANCE WARNING SIGNS MORE THAN 3 DAYS PRIOR TO BEGINNING OF WORK.
- SIGNS SHOWN ARE REQUIRED FOR WORK ZONES THAT WILL REMAIN IN EFFECT OVERNIGHT. FOR SHORT-TERM DAILY MAINTENANCE TYPE OPERATIONS, THIS SIGNING APPLICATION IS OPTIONAL; MAY USE ONLY APPLICABLE ROADWAY STANDARD DRAWINGS INSTEAD. HOWEVER, IF THIS SIGNING APPLICATION IS USED, SIGNS MAY BE PORTABLE MOUNTED.
- ALL SIGN SPACING DIMENSIONS ARE APPROXIMATE, FIELD ADJUST AS NECESSARY OR AS DIRECTED.
- USE 3LB STEEL U-CHANNEL POST OR 4" X 4" WOOD POST FOR ALL WORK ZONE SIGNS. 3LB STEEL U-CHANNEL POSTS MUST MEET THE REQUIREMENTS OF STANDARD SPECIFICATION SECTION 1094-1(B), MAY BE GALVANIZED STEEL, OR MAY BE PAINTED GREEN BY THE POST MANUFACTURER. SQUARE STEEL TUBING POSTS HAVING EQUIVALENT STRENGTH OF THE 3 LB STEEL U-CHANNEL POST ARE ALSO ACCEPTABLE FOR USE. ERECT SIGNS PER ROADWAY STANDARD DRAWING 1110.01. PAYMENT FOR WOOD POSTS, 3LB STEEL U-CHANNEL AND SQUARE STEEL TUBING POSTS WITH SIGNS WILL BE MADE ACCORDING TO STANDARD SPECIFICATION "WORK ZONE SIGNS" SECTION 1110.
- WHEN NECESSARY, USE SPLICING IN ACCORDANCE WITH ROADWAY STANDARD DRAWING NO. 1110.01. REMOVE ENTIRE POST WHEN REMOVING SIGNS WITH SPLICED POSTS.
- DO NOT BACK BRACE SIGN SUPPORTS.

APPROVED: _____ DATE: _____	ADVANCED WORK ZONE WARNING SIGNS FOR FREEWAYS (4 LANES OR GREATER)	
SEAL	SCALE: NONE	REVISIONS
	DATE: 8/03	03/04
	DWG. BY: JI	
	DESIGN BY: JI	
REVIEWED BY: _____		<small>CADD FILE</small>

03-OCT-2011 11:40 AM V:\DOT\DESIGN\GROUPS-WZTC\TMU\WZTC\Resurfacing\2011West\2011Div2\C202872A-C_12CR10181.12x3_Catowba_freeways_4lanes_or_greater_stationary.dgn