

STATE	STATE PROJECT REFERENCE NO.	SHEET NO.
N.C.	U-5204	UO-1

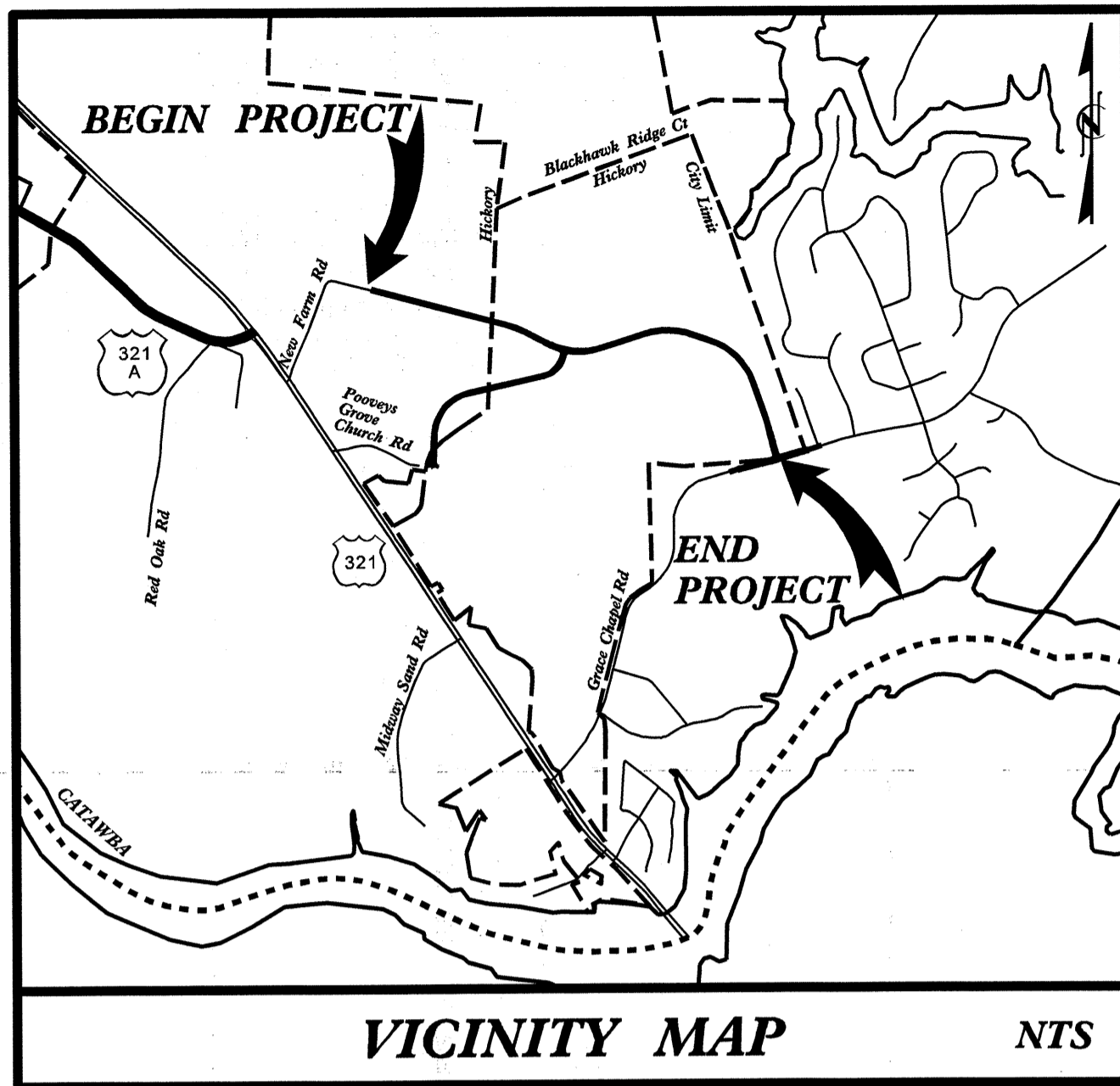
STATE OF NORTH CAROLINA
DIVISION OF HIGHWAYS

**UTILITIES BY OTHERS PLANS
CALDWELL COUNTY**

**LOCATION: NEW FARM ROAD
FROM NEW FARM ROAD (SR 1764)
TO GRACE CHAPEL ROAD (SR 1751)**

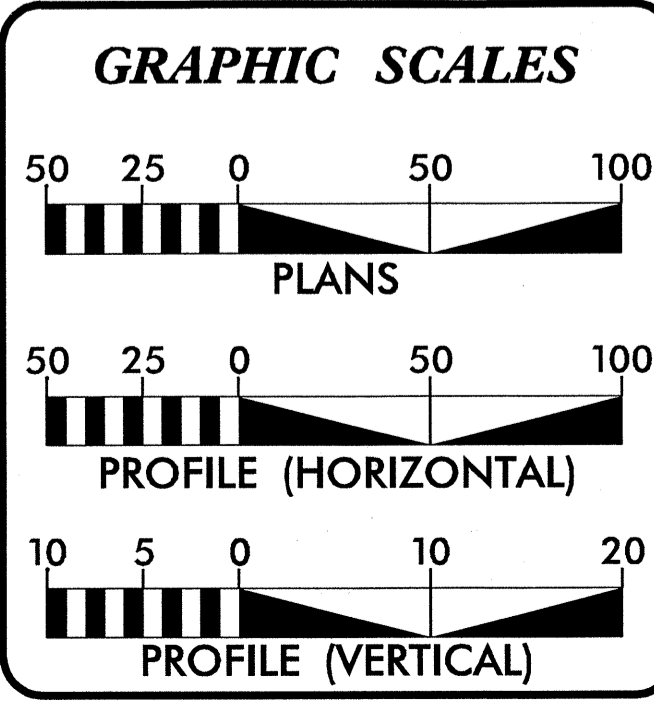
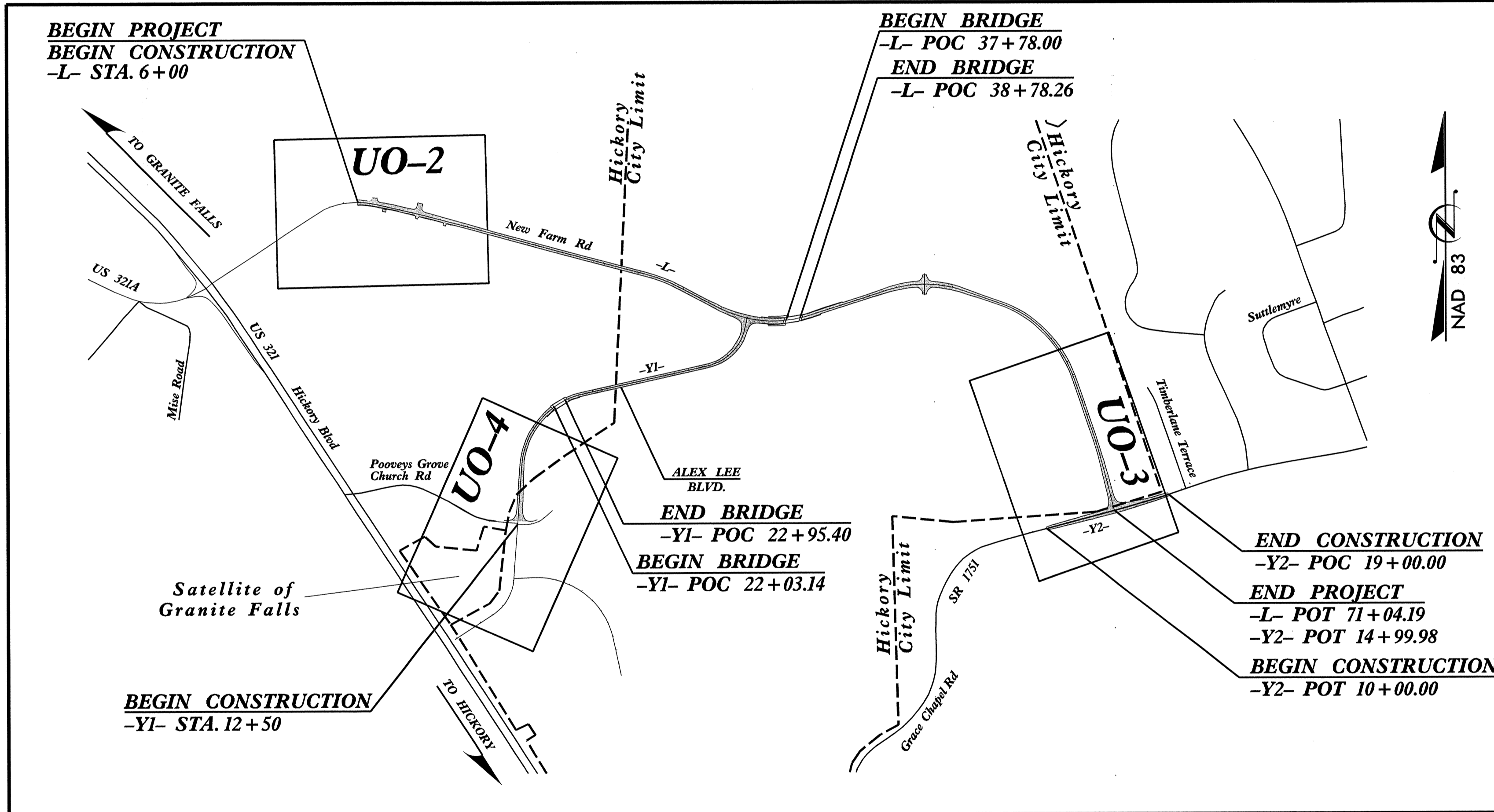
TYPE OF WORK: RELOCATION OF POWER, TELEPHONE, GAS & WATER

See Sheet I-A For Index of Sheets
See Sheet IB For Conventional Symbols



TIP PROJECT: U-5204

CONTRACT: C202565



DESIGN DATA

ADT 2010 =	4,400
ADT 2030 =	6,800
DHV =	50 %
D =	4 %
T =	4 % *
V =	40 MPH
* TTST 4	DUAL 2
SUBREGIONAL TIER	

1) UO-1	TITLE SHEET
2) UO-2	UTILITIES BY OTHERS PLAN SHEET
3) UO-3	UTILITIES BY OTHERS PLAN SHEET
4) UO-4	UTILITIES BY OTHERS PLAN SHEET

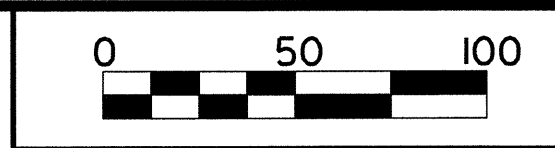
UTILITY OWNERS ON PROJECT

1) POWER	DUKE ENERGY
2) FIBER OPTIC	DUKETET COMMUNICATIONS
3) WATER	CALDWELL COUNTY PUBLIC UTILITIES
4) BROADBAND	EMBARQ
5) GAS	PEIDMONT NATURAL GAS
6) CATV	CHARTER COMMUNICATIONS

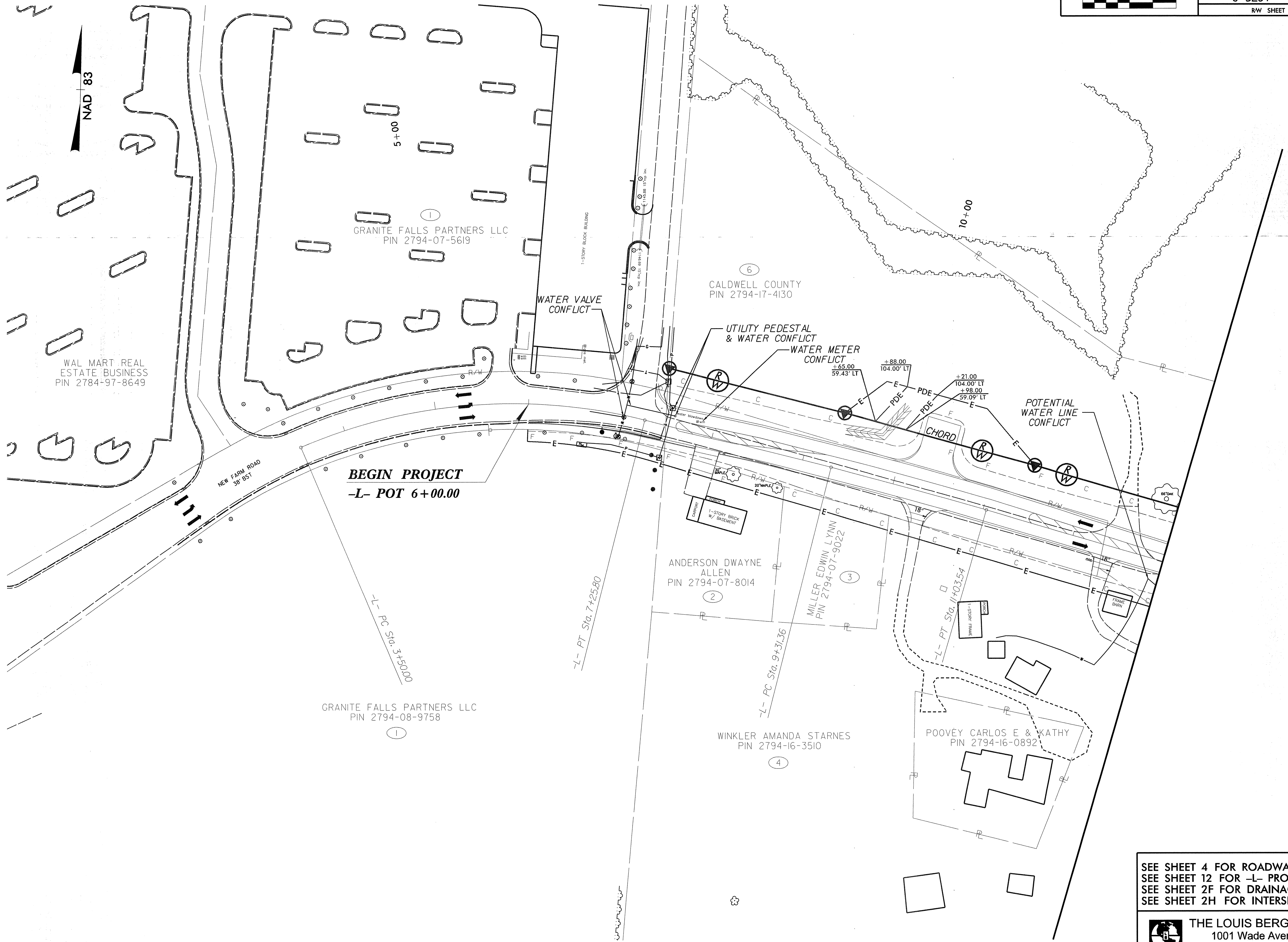
Prepared in the Office of:
THE LOUIS BERGER GROUP, Inc.
1001 Wade Avenue, Suite 400
Raleigh, North Carolina 27605

DIVISION OF HIGHWAYS
STATE OF NORTH CAROLINA

P.E.
STATE HIGHWAY DESIGN ENGINEER



PROJECT REFERENCE NO. U-5204	SHEET NO. U0-2
RW SHEET NO.	



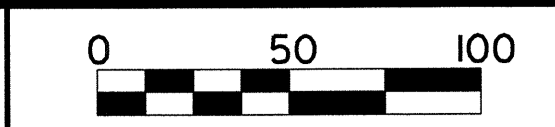
REVISIONS

\$DATE\$
\$FILEL\$
\$TIME\$

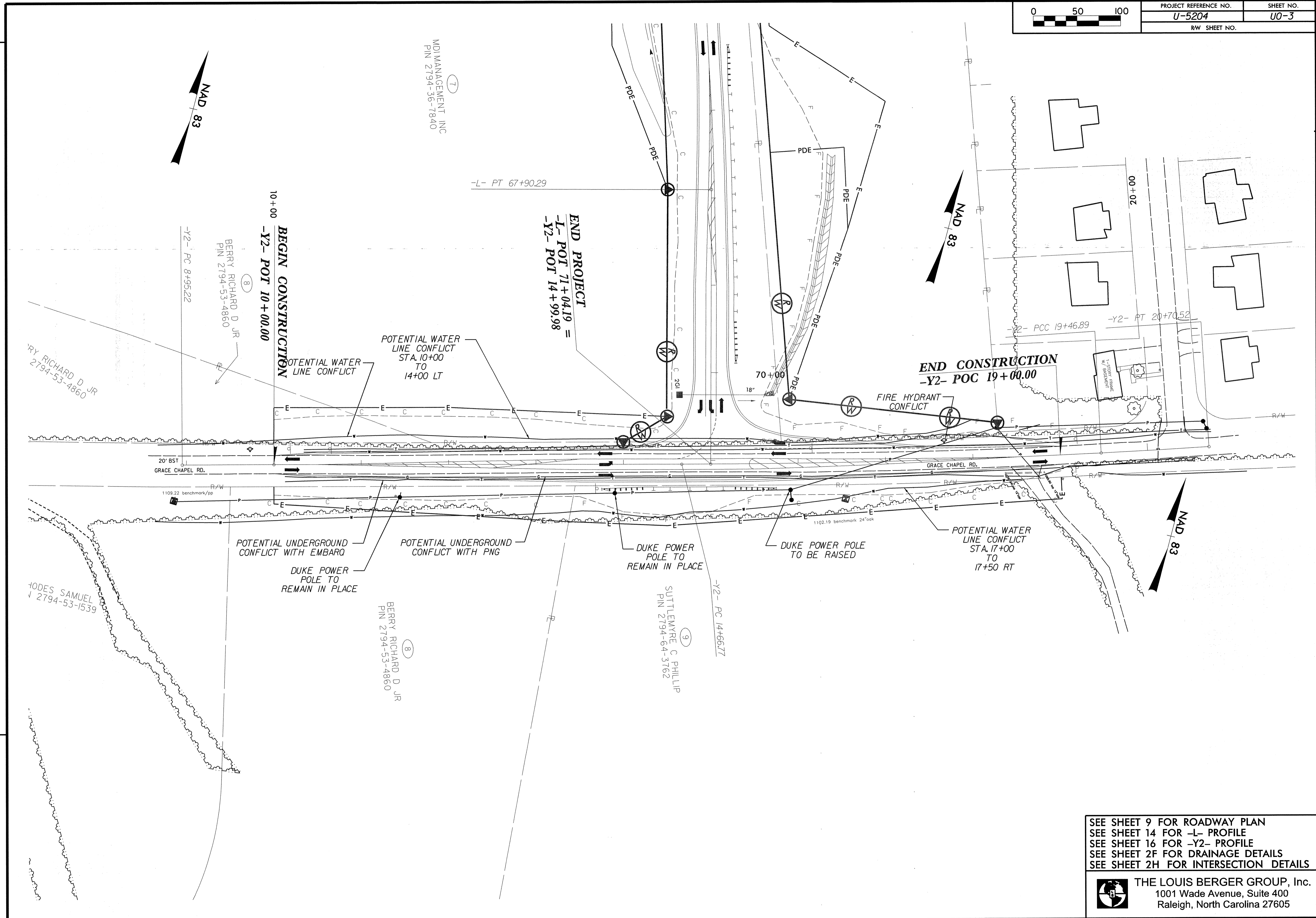
SEE SHEET 4 FOR ROADWAY PLAN
SEE SHEET 12 FOR -L- PROFILE
SEE SHEET 2F FOR DRAINAGE DETAILS
SEE SHEET 2H FOR INTERSECTION DETAILS



THE LOUIS BERGER GROUP, Inc.
1001 Wade Avenue, Suite 400
Raleigh, North Carolina 27605




PROJECT REFERENCE NO. U-5204	SHEET NO. U0-3
RW SHEET NO.	

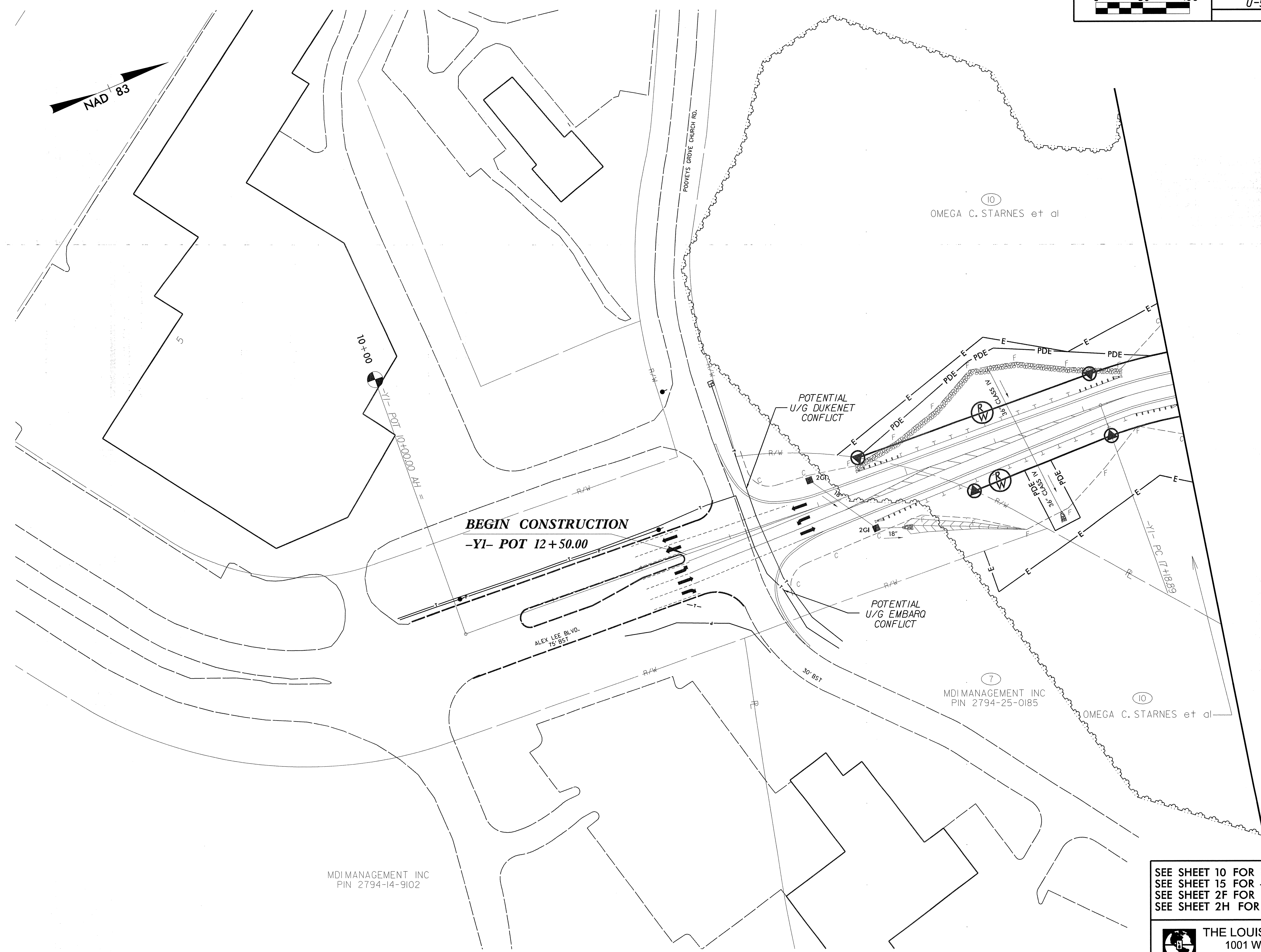
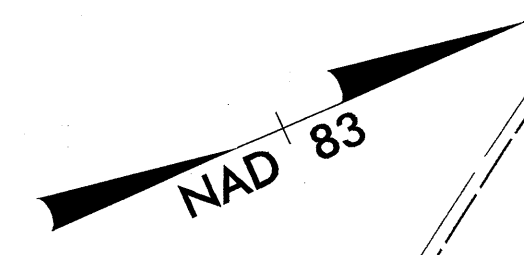


REVISIONS

\$DATE\$
\$FILEL\$
\$TIMES\$

SEE SHEET 9 FOR ROADWAY PLAN
 SEE SHEET 14 FOR -L- PROFILE
 SEE SHEET 16 FOR -Y2- PROFILE
 SEE SHEET 2F FOR DRAINAGE DETAILS
 SEE SHEET 2H FOR INTERSECTION DETAILS

 THE LOUIS BERGER GROUP, Inc.
 1001 Wade Avenue, Suite 400
 Raleigh, North Carolina 27605



REVISIONS
 DATES
 BY
 FILED
 TIMES

SEE SHEET 10 FOR ROADWAY PLAN
 SEE SHEET 15 FOR -Y1- PROFILE
 SEE SHEET 2F FOR DRAINAGE DETAILS
 SEE SHEET 2H FOR INTERSECTION DETAILS