

09/08/99

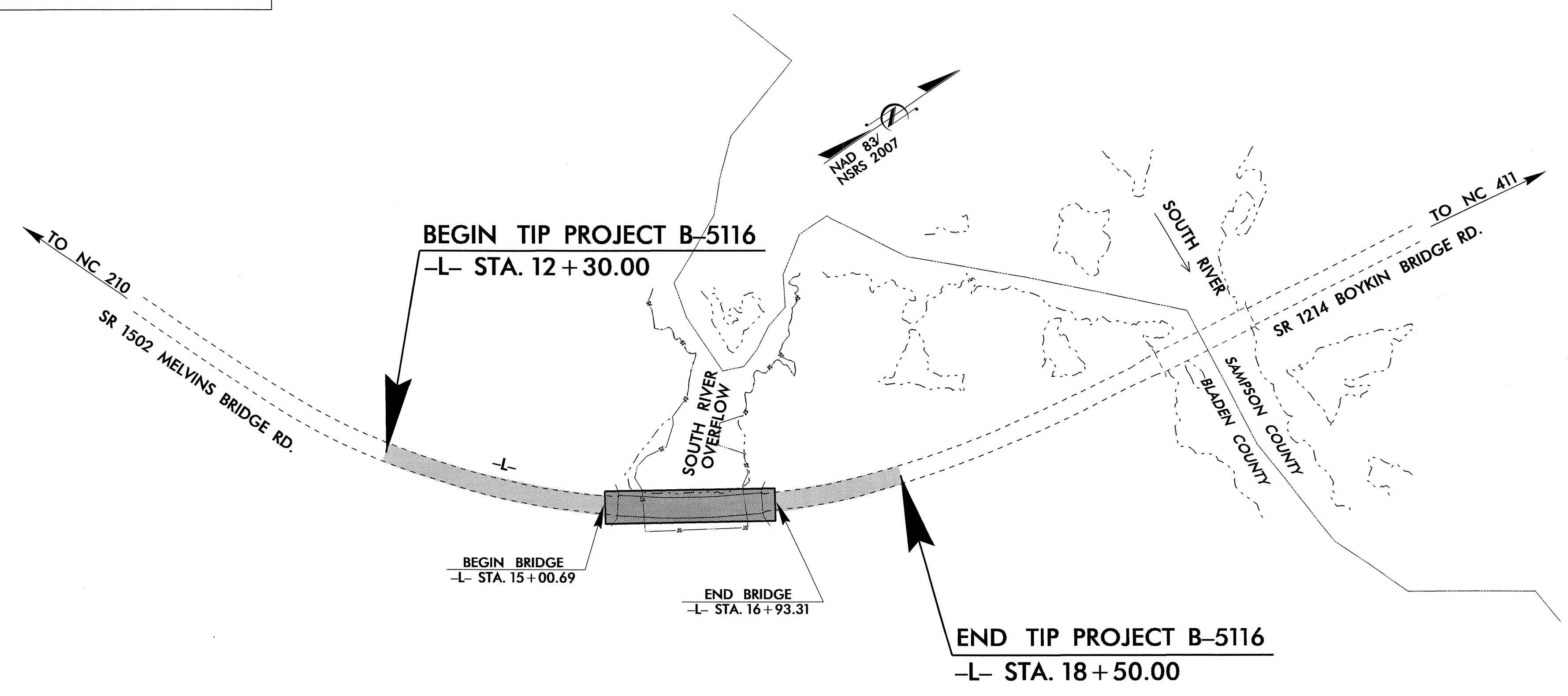
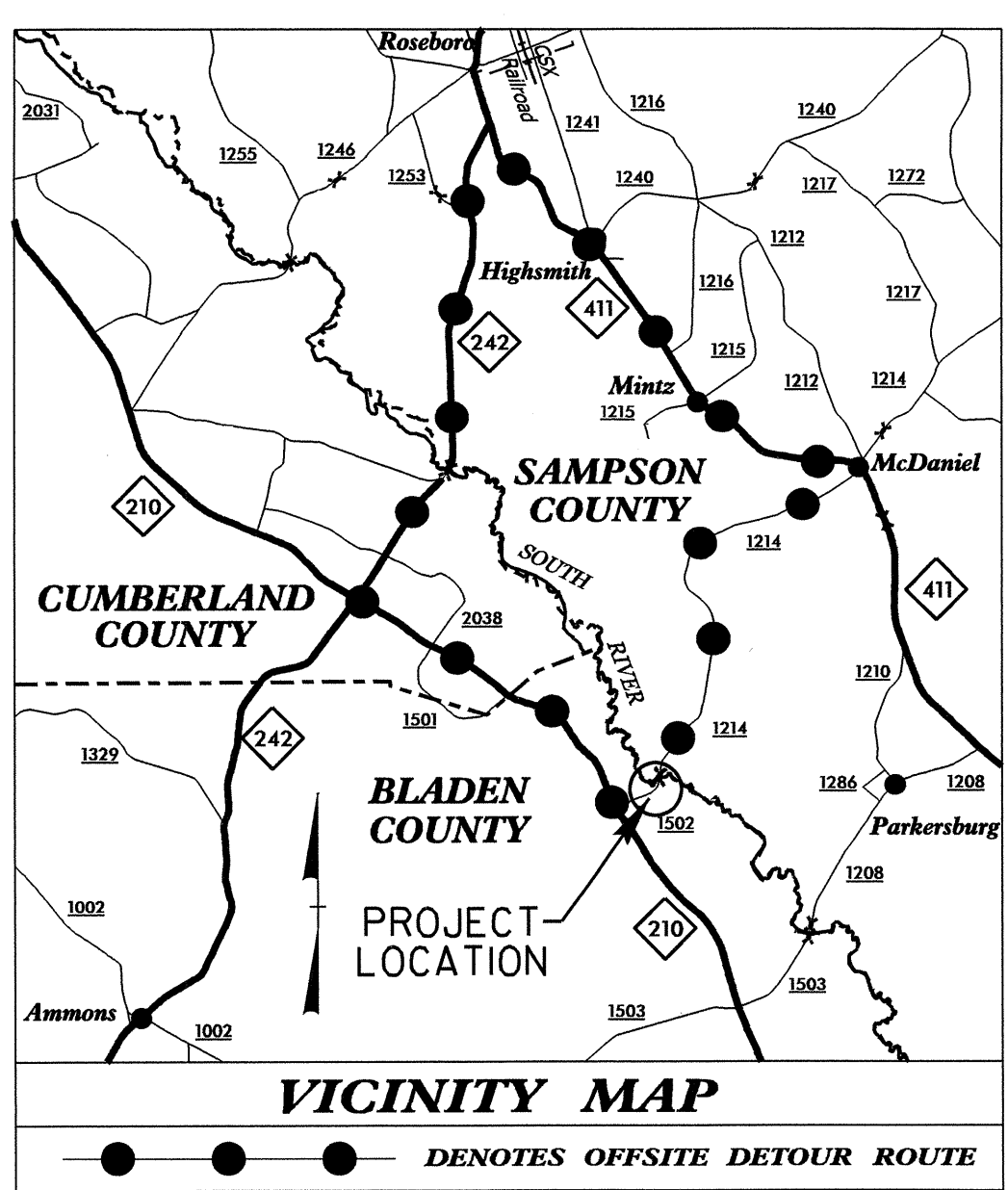
T.I.P. NO.	SHEET NO.
B-5116	UO-1

STATE OF NORTH CAROLINA
DIVISION OF HIGHWAYS

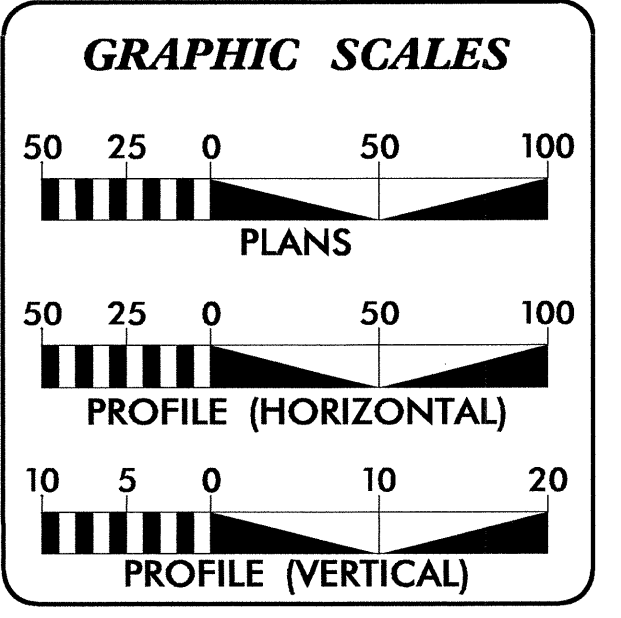
**UTILITIES BY OTHERS PLANS
BLADEN COUNTY**

**LOCATION: BRIDGE NO. 150 OVER SOUTH RIVER OVERFLOW
AND APPROACHED ON SR 1502 (MELVINS BRIDGE RD.)**

TYPE OF WORK: UTILITIES BY OTHERS RELOCATION



TIP PROJECT: B-5116



INDEX OF SHEETS

SHEET NO.	DESCRIPTION
UO-1	TITLE SHEET
UO-2	UTILITY BY OTHERS PLAN SHEETS

UTILITY OWNERS ON PROJECT

(1) SOUTH RIVER EMC (POWER)



PREPARED IN THE OFFICE OF:
**DIVISION OF HIGHWAYS
UTILITIES ENGINEERING
SECTION**

1591 MAIL SERVICES CENTER
RALEIGH NC 27699-1591
PHONE (919) 250-4128
FAX (919) 250-4119

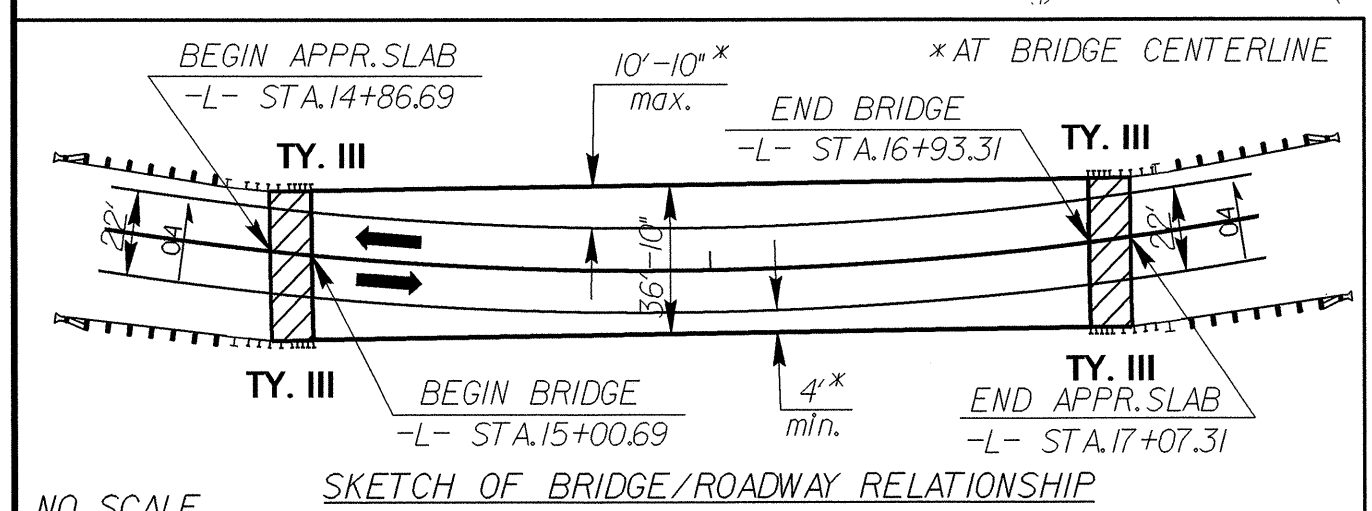
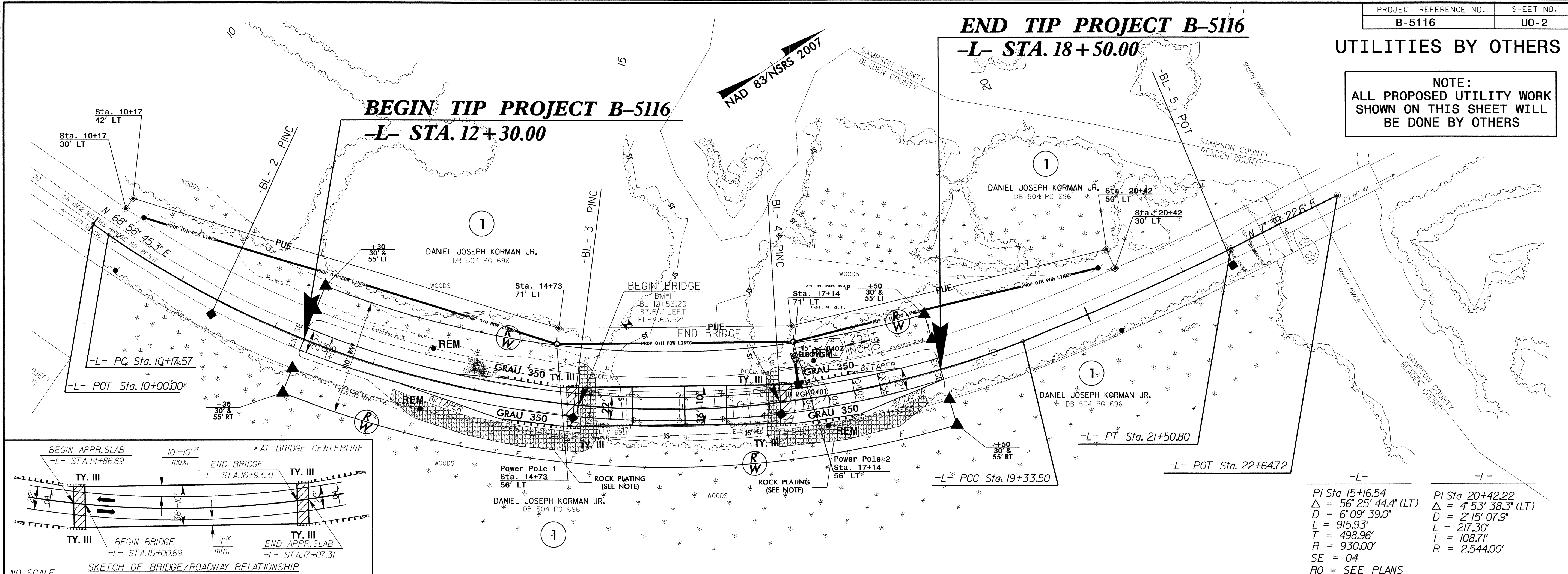
Roger Worthington, P.E. UTILITIES SECTION ENGINEER
Corey Bousquet, P.E. UTILITIES SQUAD LEADER PROJECT ENGINEER
Stephanie Athey UTILITIES PROJECT DESIGNER

14-JUN-2011 13:39 R:\UT\11\res\yrdy\ut\proj\B5116_Rdy_UT_1.tsh.dgn \$\$\$USER\$\$\$

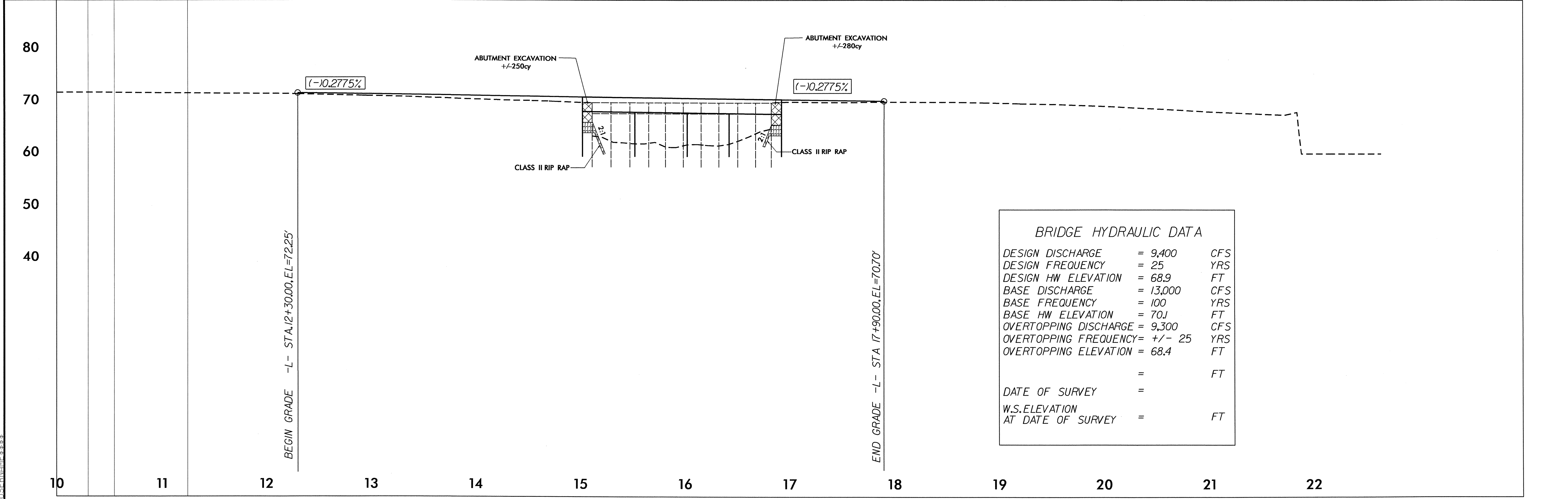
END TIP PROJECT B-5116
-L- STA. 18+50.00

UTILITIES BY OTHERS

NOTE:
 ALL PROPOSED UTILITY WORK SHOWN ON THIS SHEET WILL BE DONE BY OTHERS



-L-	-L-
PI Sta 15+16.54	PI Sta 20+42.22
$\Delta = 56^{\circ} 25' 44.4''$ (LT)	$\Delta = 4^{\circ} 53' 38.3''$ (LT)
$D = 6^{\circ} 09' 39.0''$	$D = 2^{\circ} 15' 07.9''$
$L = 915.93'$	$L = 217.30'$
$T = 498.96'$	$T = 108.71'$
$R = 930.00'$	$R = 2,544.00'$
$SE = 04$	
$RO = \text{SEE PLANS}$	



BRIDGE HYDRAULIC DATA

DESIGN DISCHARGE	= 9,400	CFS
DESIGN FREQUENCY	= 25	YRS
DESIGN HW ELEVATION	= 68.9	FT
BASE DISCHARGE	= 13,000	CFS
BASE FREQUENCY	= 100	YRS
BASE HW ELEVATION	= 70.1	FT
OVERTOPPING DISCHARGE	= 9,300	CFS
OVERTOPPING FREQUENCY	= +/- 25	YRS
OVERTOPPING ELEVATION	= 68.4	FT
	=	FT
DATE OF SURVEY	=	FT
W.S. ELEVATION AT DATE OF SURVEY	=	FT

8/17/99
 14-JUN-2011 13:36
 R:\Users\jrd\Documents\Projects\B5116_Rdy_UT_pah.dgn
 \$\$\$\$\$\$