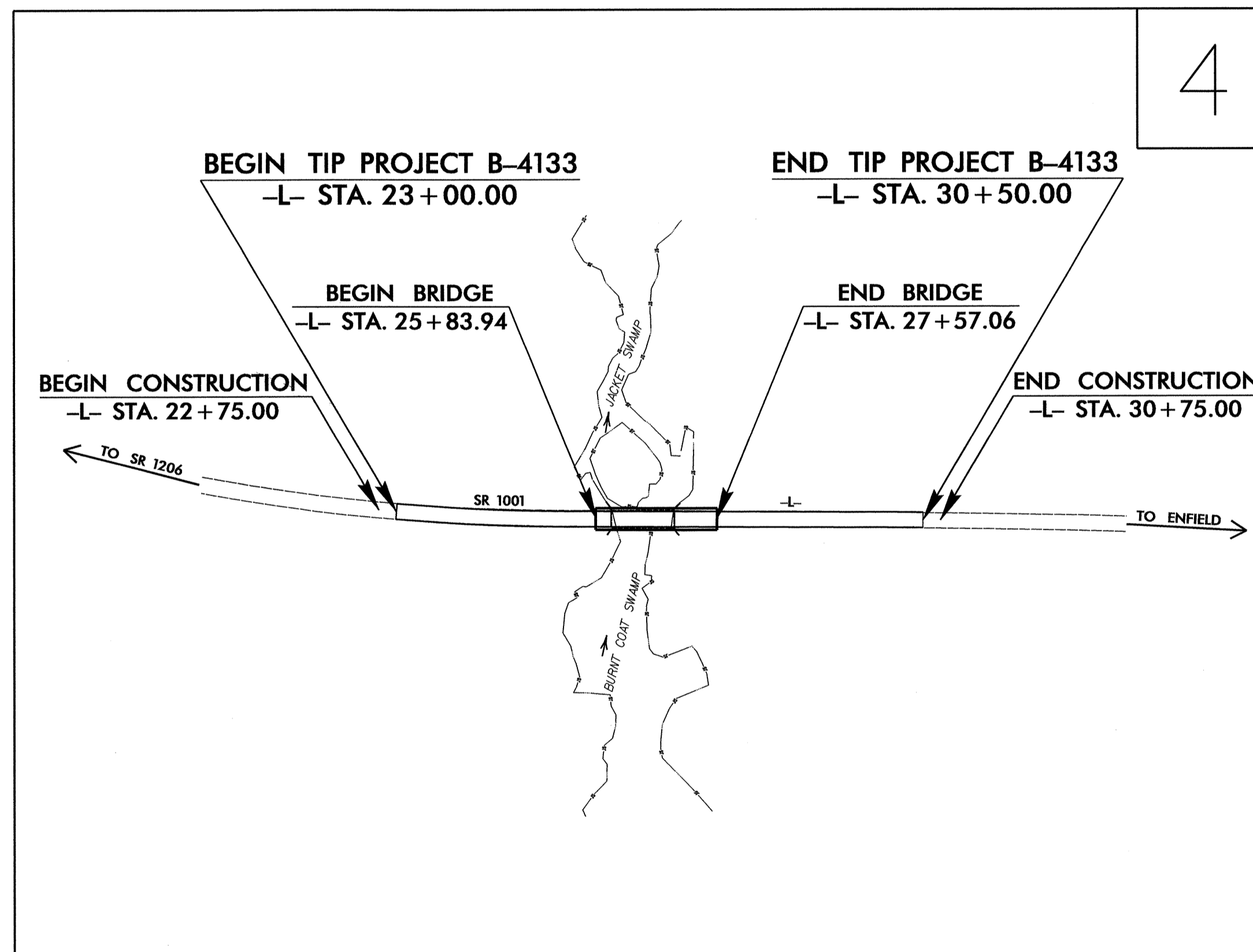
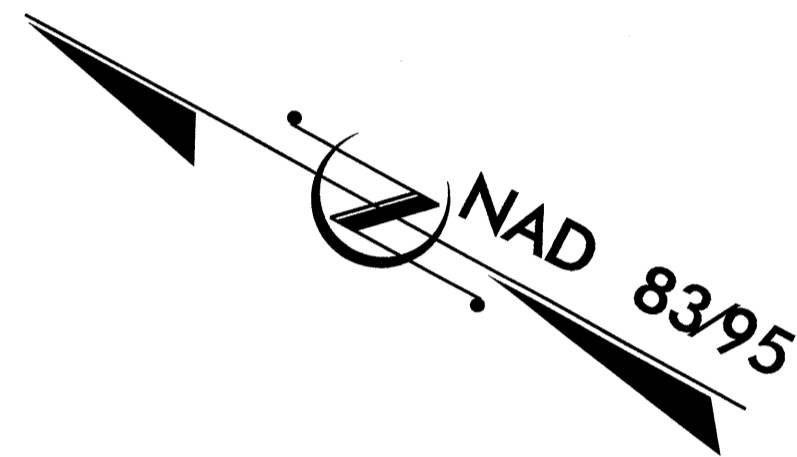


**TIP PROJECT: B-4133**

STATE OF NORTH CAROLINA  
DIVISION OF HIGHWAYS  
  
PLAN FOR PROPOSED  
HIGHWAY EROSION CONTROL

**HALIFAX COUNTY**

**LOCATION: BRIDGE NO. 11 OVER JACKET SWAMP OR BURNT COAT SWAMP ON SR 1001  
(JUSTICE BRANCH ROAD)  
TYPE OF WORK: GRADING, DRAINAGE, PAVING, AND STRUCTURE**



STATE	STATE PROJECT REFERENCE NO.	SHEET NO.	TOTAL SHEETS
N.C.	B-4133	EC-1	
STATE PROJ. NO.	F.A. PROJ. NO.	DESCRIPTION	

**EROSION AND SEDIMENT CONTROL MEASURES**

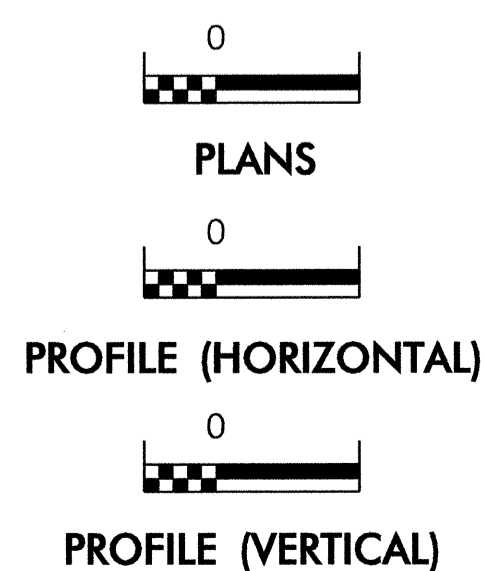
Std. #	Description	Symbol
1630.03	Temporary Silt Ditch	TD
1630.05	Temporary Diversion	TD
1605.01	Temporary Silt Fence	III III III
1606.01	Special Sediment Control Fence	△△△△△△△△
1622.01	Temporary Berms and Slope Drains	T
1633.01	Silt Basin Type B	▨
1633.01	Temporary Rock Silt Check Type-A	⊗
1633.01	Temporary Rock Silt Check Type-A with Matting and Polyacrylamide (PAM)	⊗
1633.01	Temporary Rock Silt Check Type-B	▶
1633.01	Wattle / Coir Fiber Wattle	⌒
1633.01	Wattle / Coir Fiber Wattle with Polyacrylamide (PAM)	⌒
1634.01	Temporary Rock Sediment Dam Type-A	▨
1634.02	Temporary Rock Sediment Dam Type-B	▨
1635.01	Rock Pipe Inlet Sediment Trap Type-A	⊗
1635.02	Rock Pipe Inlet Sediment Trap Type-B	⊗
1630.04	Stilling Basin	▭
1630.06	Special Stilling Basin	▭
Rock Inlet Sediment Trap:		
1632.01	Type A	A
1632.02	Type B	B
1632.03	Type C	C
Skimmer Basin		
Tiered Skimmer Basin		
Infiltration Basin		

**THIS PROJECT CONTAINS EROSION CONTROL PLANS FOR CLEARING AND GRUBBING PHASE OF CONSTRUCTION.**

**THIS PROJECT HAS BEEN DESIGNED TO SENSITIVE WATERSHED STANDARDS.**

**ENVIRONMENTALLY SENSITIVE AREA(S) EXIST ON THIS PROJECT**  
*Refer To E. C. Special Provisions for Special Considerations.*

**GRAPHIC SCALE**



ROADSIDE ENVIRONMENTAL UNIT  
DIVISION OF HIGHWAYS  
STATE OF NORTH CAROLINA

Prepared in the Office of:  
**ROADSIDE ENVIRONMENTAL UNIT**  
1 South Wilmington St.  
Raleigh, NC 27611  
**2006 STANDARD SPECIFICATIONS**

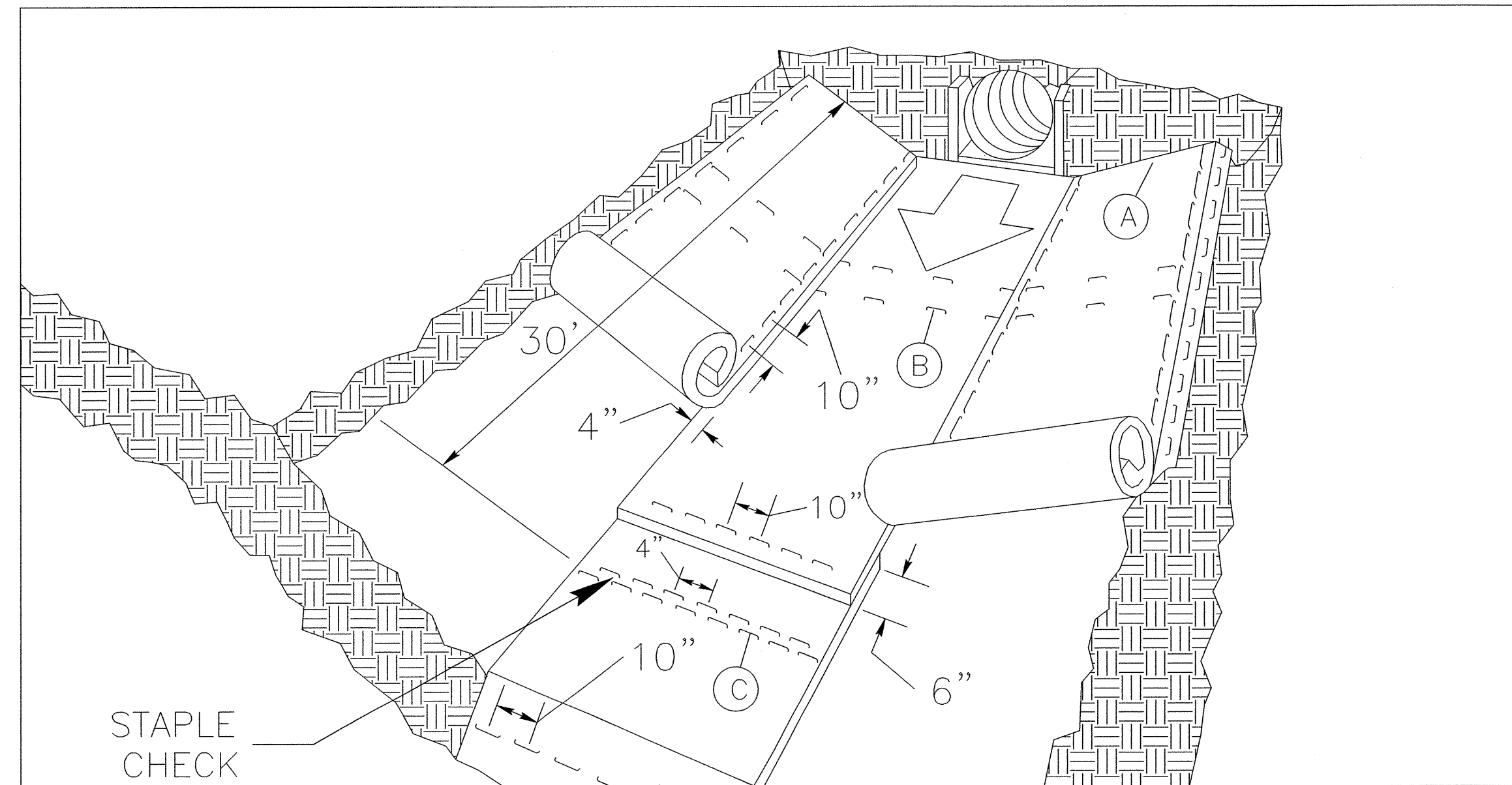
**Roadway Standard Drawings**

The following roadway english standards as appear in "Roadway Standard Drawings"- Roadway Design Unit - N. C. Department of Transportation - Raleigh, N. C., dated July 18, 2006 and the latest revision thereto are applicable to this project and by reference hereby are considered a part of these plans.

- |         |                                  |         |                                 |
|---------|----------------------------------|---------|---------------------------------|
| 1605.01 | Temporary Silt Fence             | 1630.06 | Special Stilling Basin          |
| 1606.01 | Special Sediment Control Fence   | 1632.03 | Rock Inlet Sediment Trap Type C |
| 1607.01 | Gravel Construction Entrance     |         |                                 |
| 1622.01 | Temporary Berms and Slope Drains |         |                                 |

PROJECT REFERENCE NO. B-4133	SHEET NO. EC-2
RW SHEET NO.	
ROADWAY DESIGN ENGINEER	HYDRAULICS ENGINEER

# MATTING INSTALLATION DETAIL



**MATTING IN DITCHES**

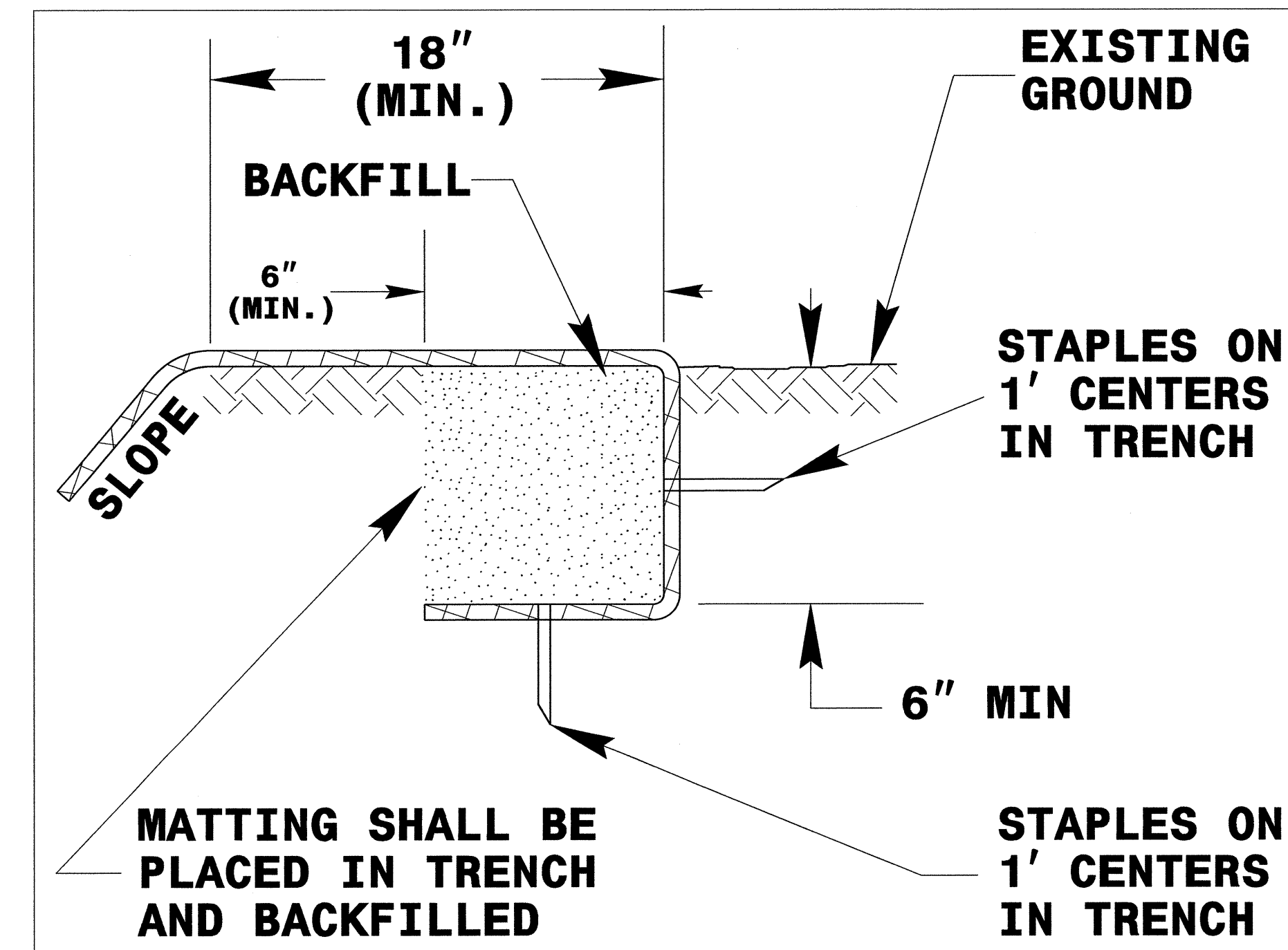
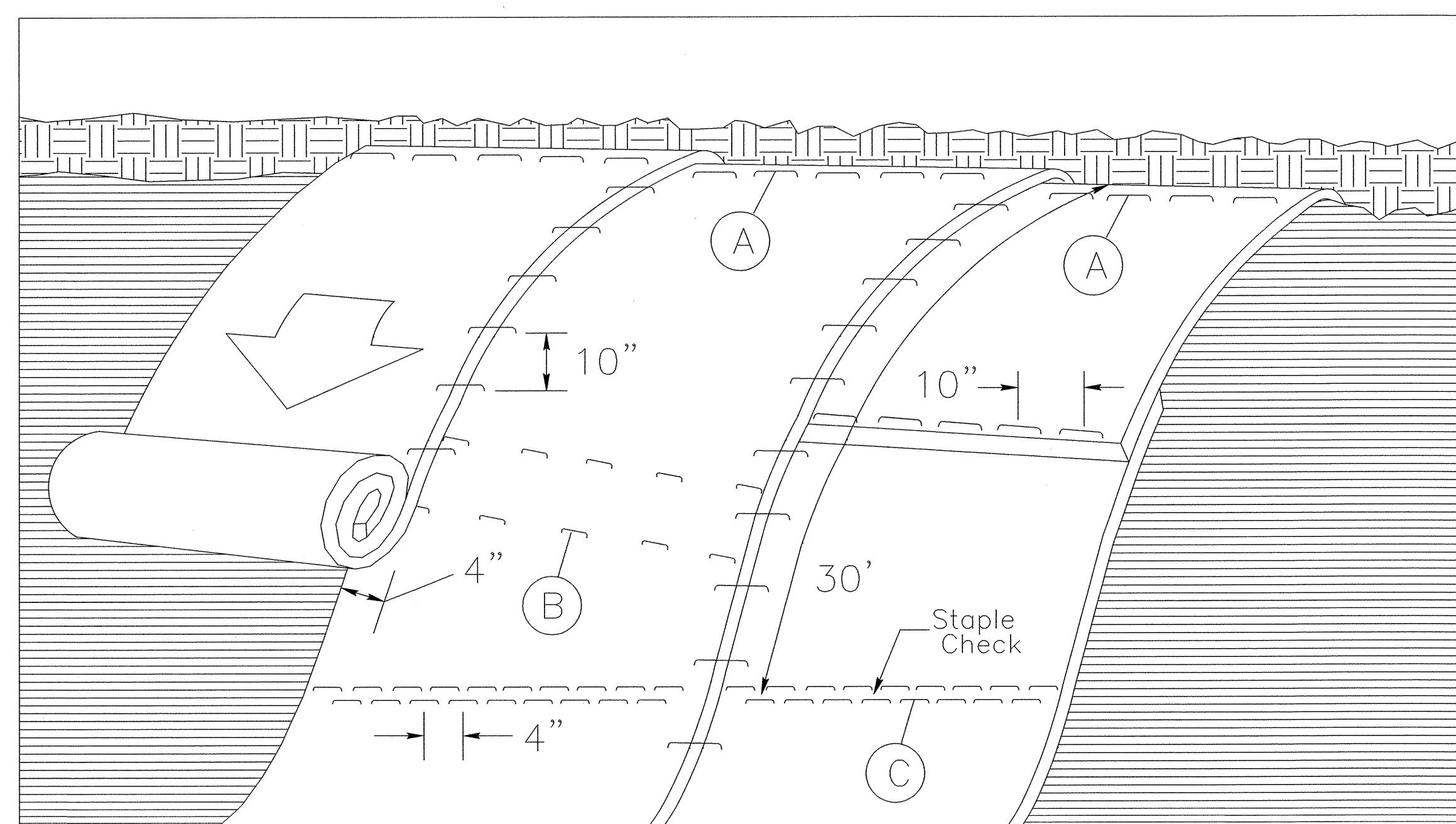


DIAGRAM (A)



**MATTING ON SLOPES**

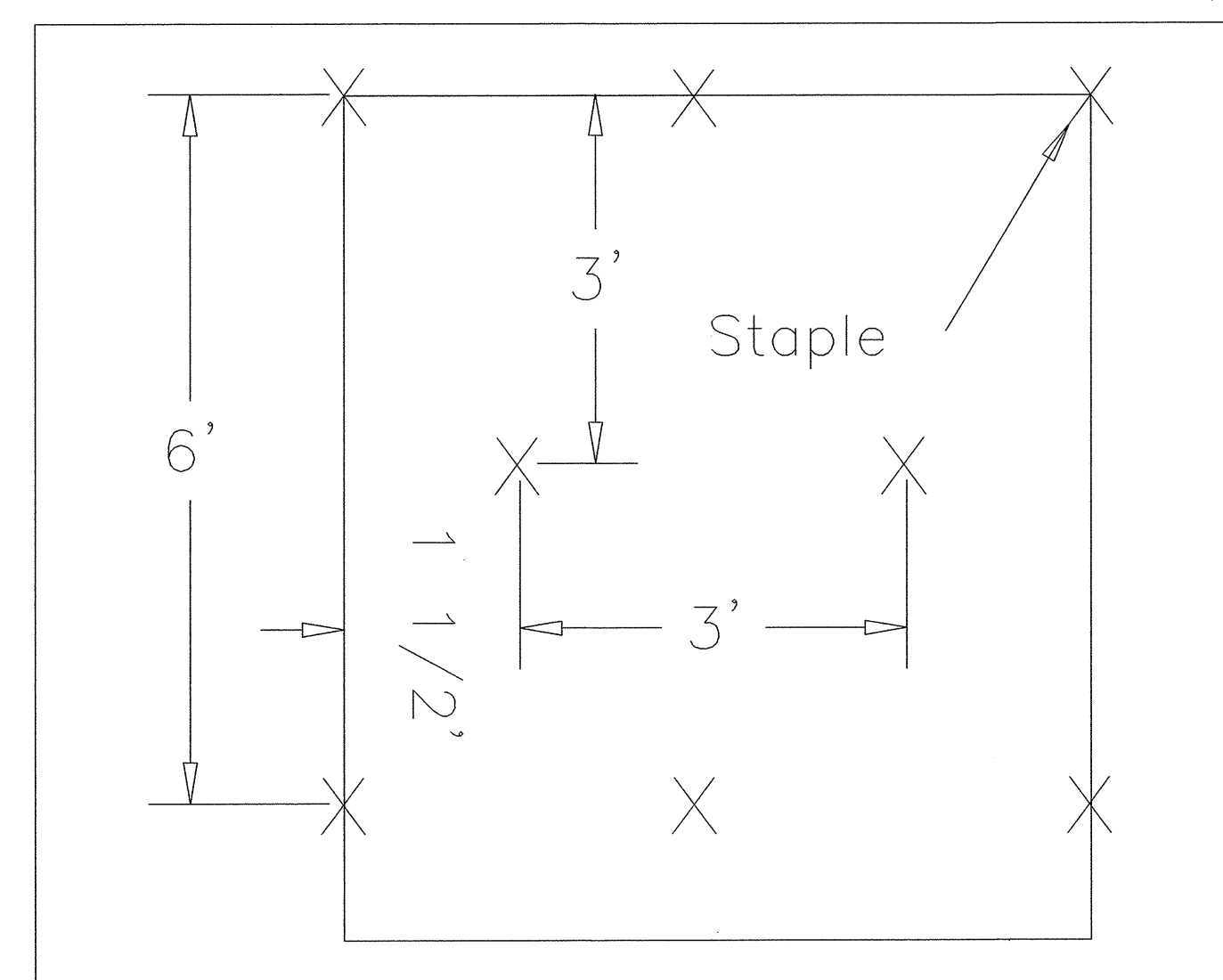


DIAGRAM (B)

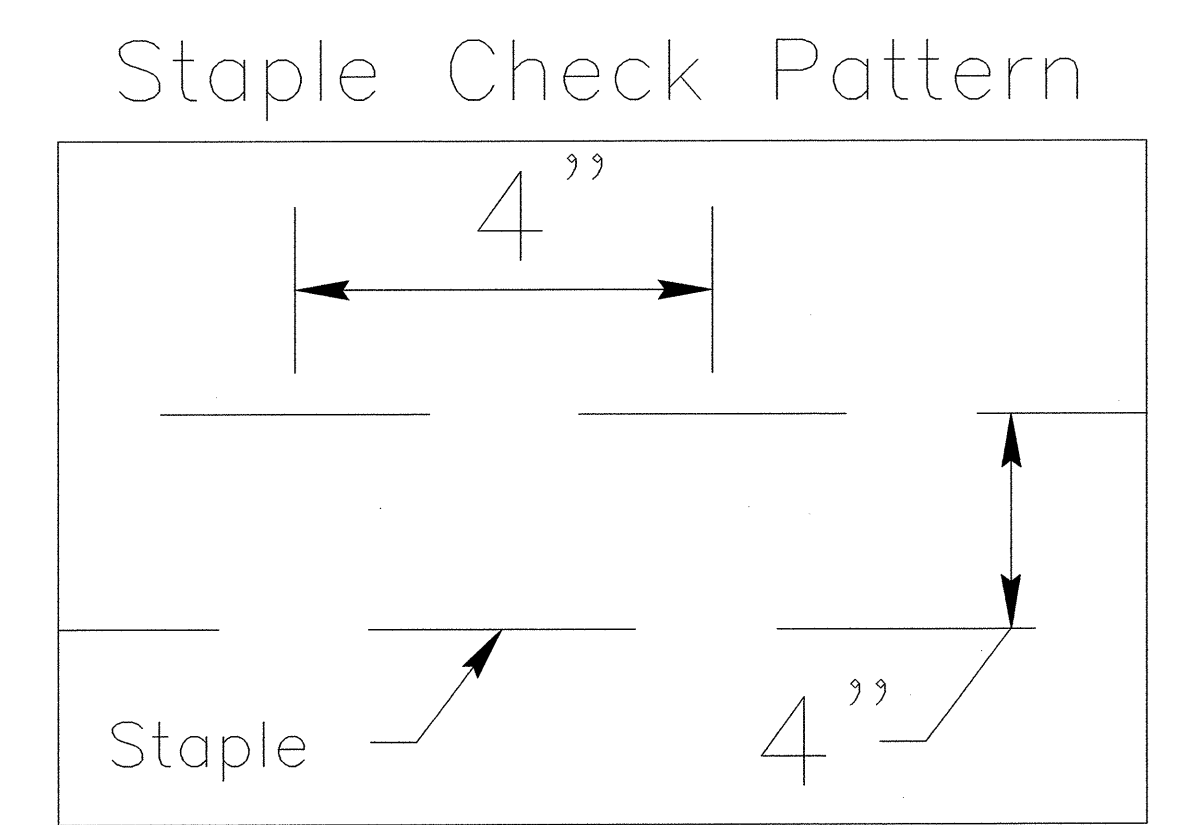


DIAGRAM (C)

**NOTES:**

THIS DETAIL APPLIES TO STRAW, EXCELSIOR, AND PERMANENT SOIL REINFORCEMENT MAT (PSRM) INSTALLATION.

STAPLES SHALL BE NO. 11 GAUGE STEEL WIRE FORMED INTO A "U" SHAPE WITH A MINIMUM THROAT WIDTH OF 1 INCH AND NOT LESS THAN 6 INCHES IN LENGTH.

NOT TO SCALE

CLEARING AND GRUBBING  
EROSION CONTROL FOR  
CONSTRUCTION SHEET 4

NOTE:  
PLACE TEMPORARY ROCK SEDIMENT DAMS TYPE - B  
AND TEMPORARY ROCK SILT CHECKS TYPE - A AT  
DRAINAGE OUTLETS.

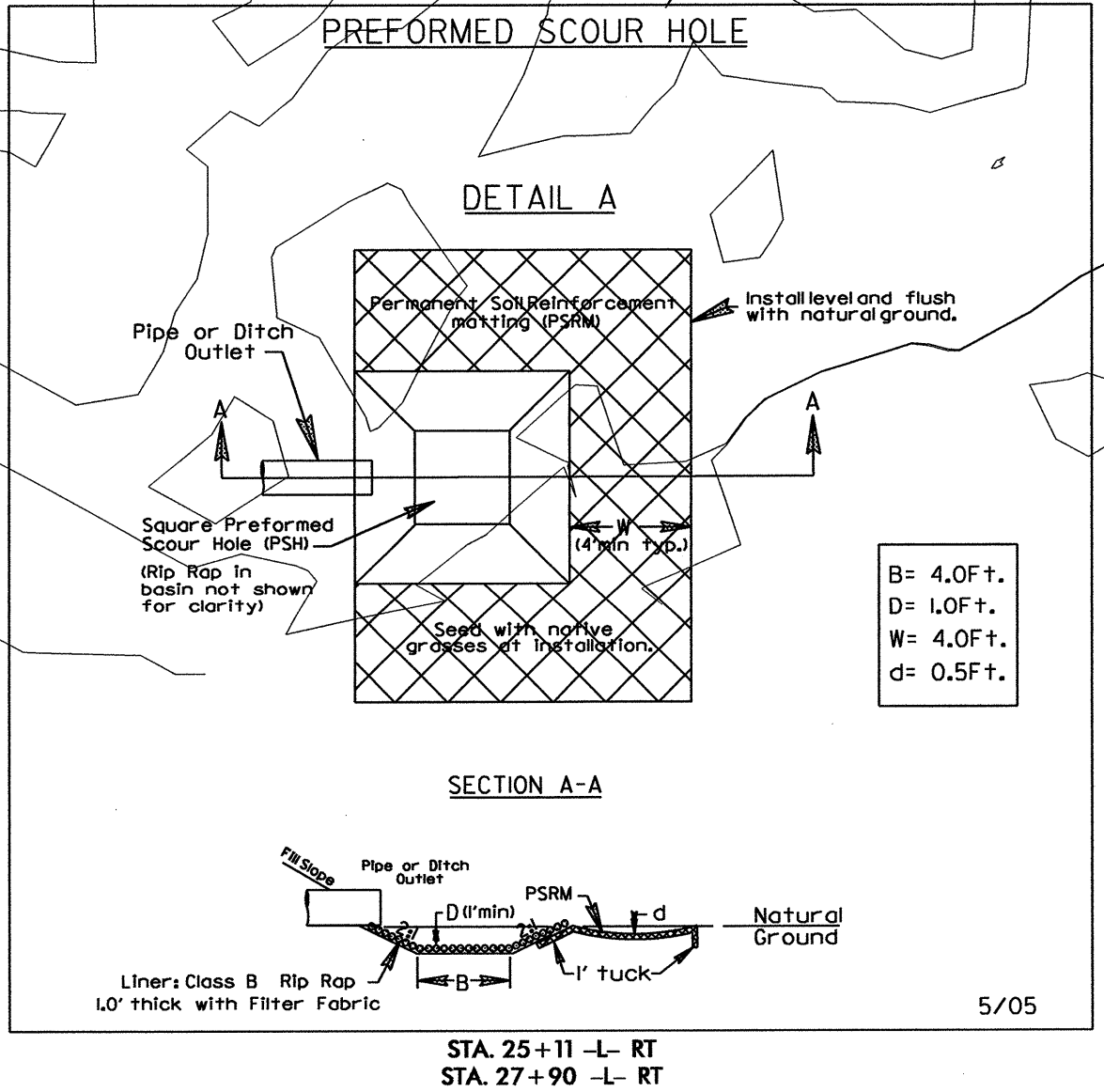
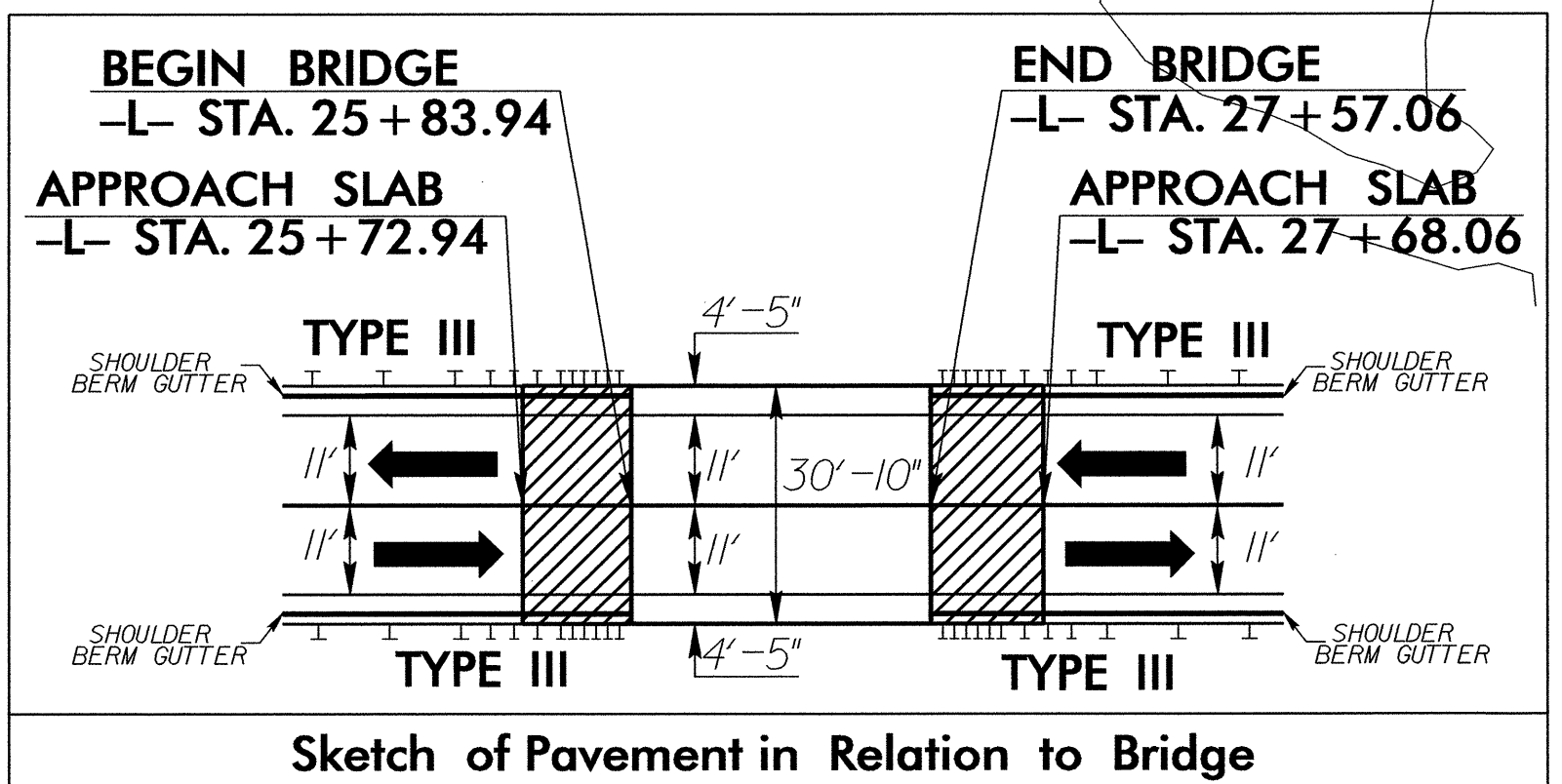
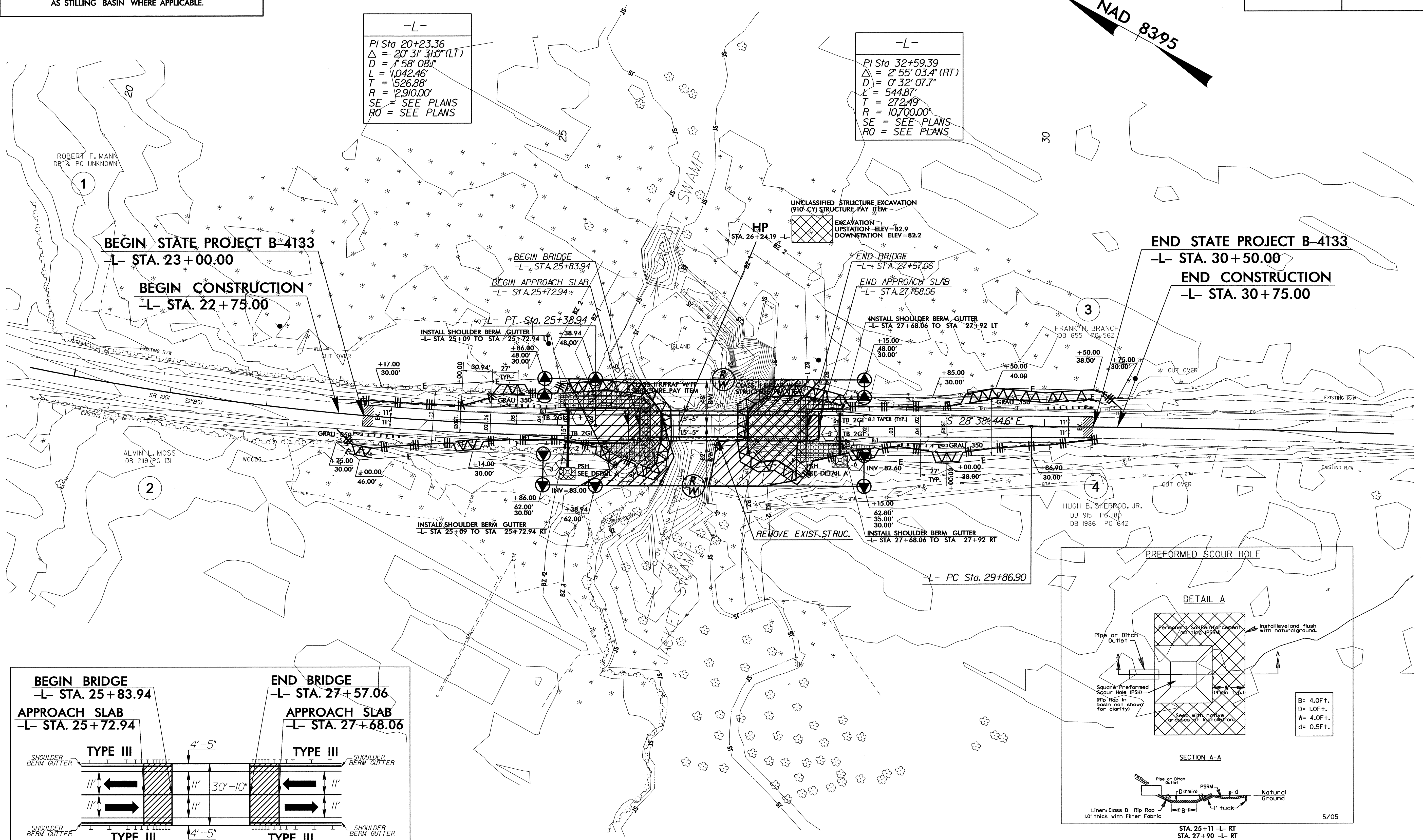
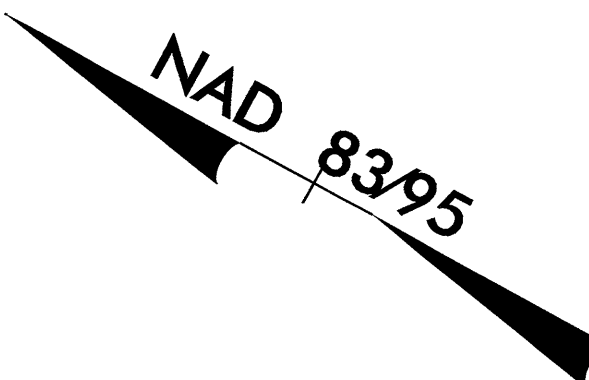
 ENVIRONMENTALLY SENSITIVE AREA  
SEE PROJECT SPECIAL PROVISIONS

NOTE:  
UTILIZE SPECIAL STILLING BASIN  
AS STILLING BASIN WHERE APPLICABLE.

PROPOSED SHOULDER BERM - GUTTER  
STA 25+09.0 TO 25+83.0 LT & RT  
STA 27+56.0 TO 27+92.0 LT & RT

-L-  
PI Sta 20+23.36  
Δ = 20' 31' 31.0" (LT)  
D = 1' 58' 08.1"  
L = 1,042.46'  
T = 526.88'  
R = 2,910.00'  
SE = SEE PLANS  
RO = SEE PLANS

-L-  
PI Sta 32+59.39  
Δ = 2' 55' 03.4" (RT)  
D = 0' 32' 07.7"  
L = 544.87'  
T = 272.49'  
R = 10,700.00'  
SE = SEE PLANS  
RO = SEE PLANS



NOTE: SEE SHEET NO. 5 FOR -L- PROFILE  
SEE SHEETS S-1 THRU S- FOR STRUCTURE PLANS  
TRAFFIC IS TO BE MAINTAINED WITH AN OFF SITE DETOUR

8/17/99  
21-APR-2011 09:42  
R:\Environmental\Design\B-4133-EC.dsn.dgn  
dchan AT BRN\256946

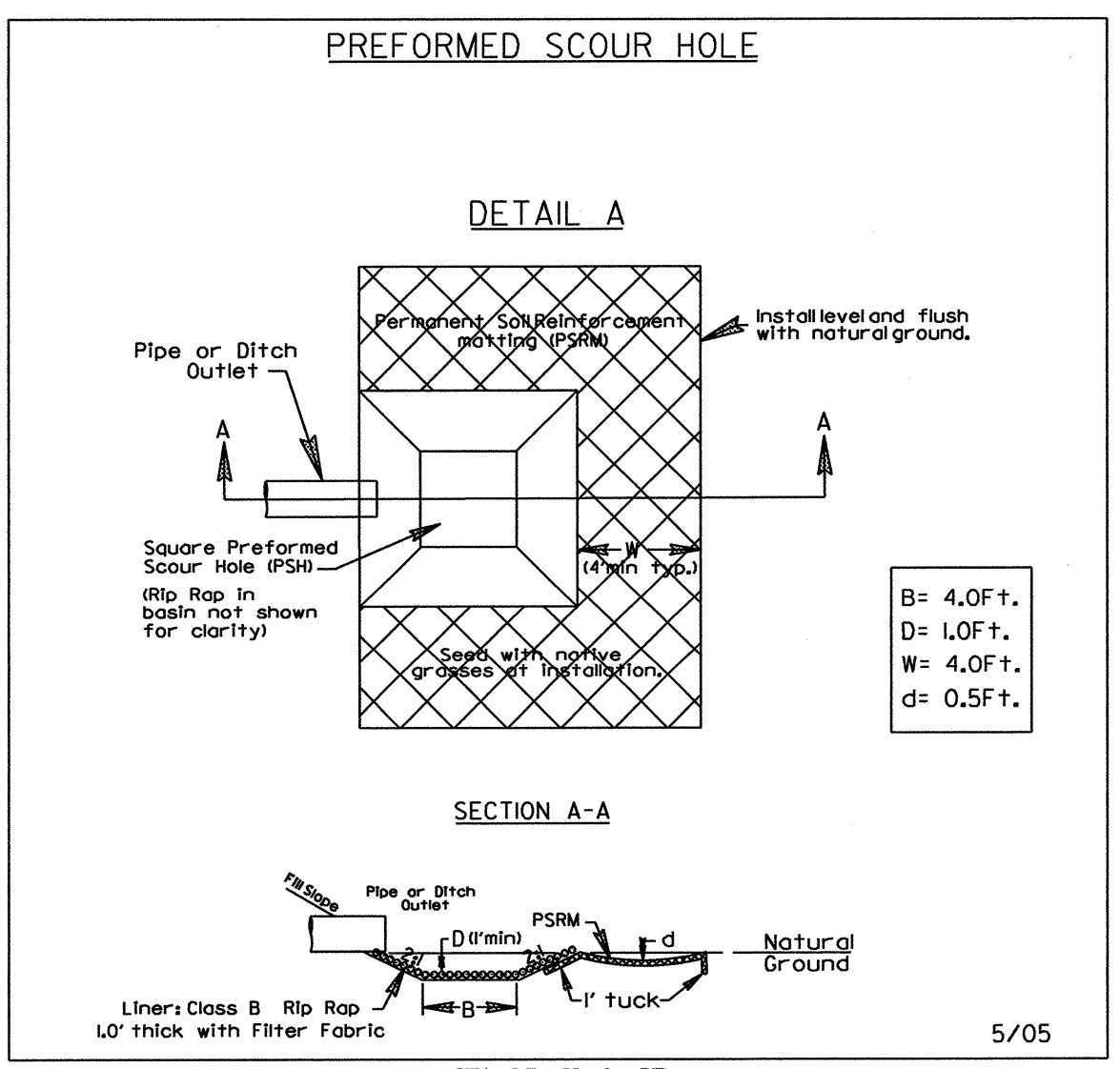
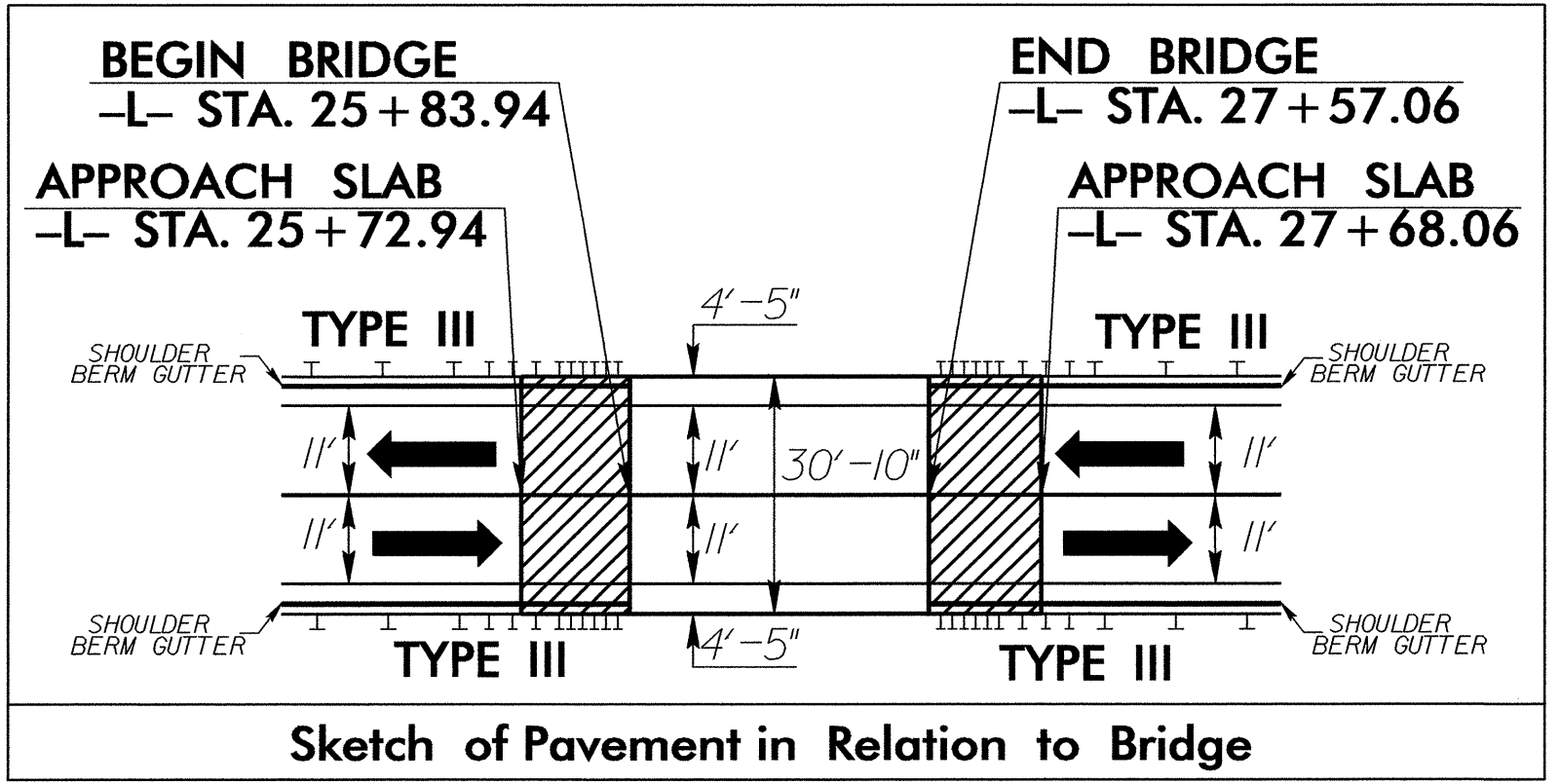
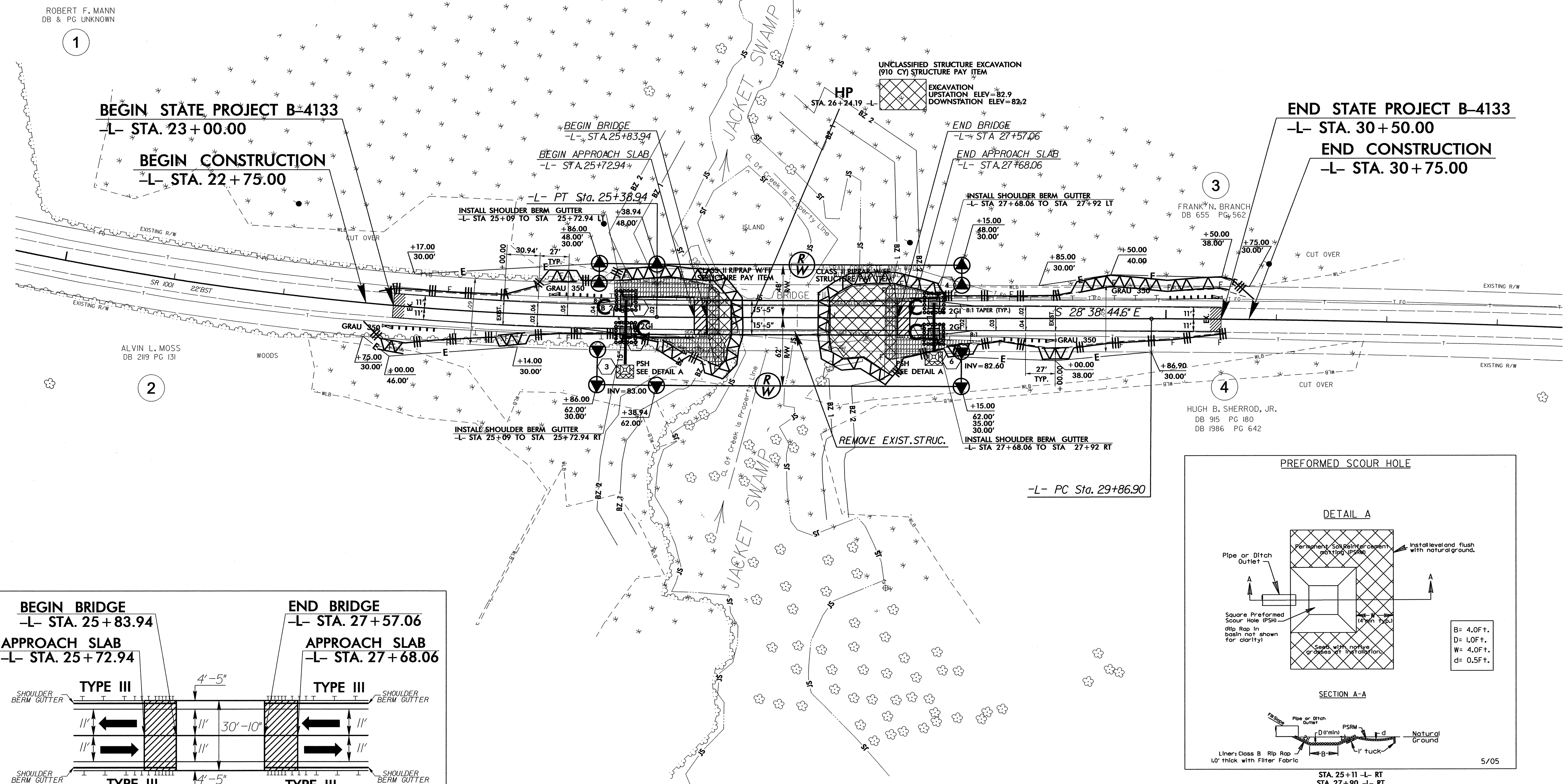
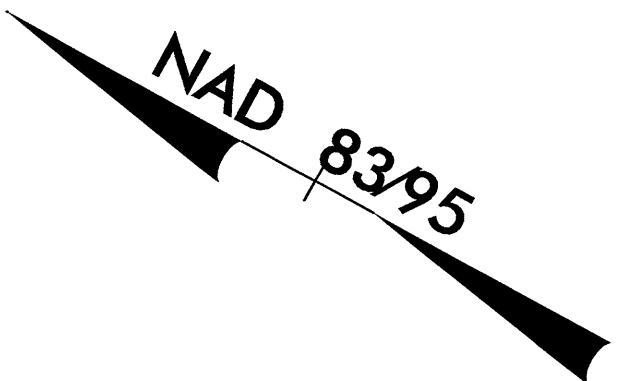
PROJECT REFERENCE NO.	SHEET NO.
B-4133	EC-4/CONST.4
RW SHEET NO.	
ROADWAY DESIGN ENGINEER	HYDRAULICS ENGINEER

NOTE:  
UTILIZE SPECIAL STILLING BASIN  
AS STILLING BASIN WHERE APPLICABLE.

PROPOSED SHOULDER BERM GUTTER  
STA 25+09.0 TO 25+85.0 LT & RT  
STA 27+56.0 TO 27+92.0 LT & RT

-L-  
PI Sta 20+23.36  
 $\Delta = 20^\circ 31' 31.0''$  (LT)  
 $D = 1,58' 08.1''$   
 $L = 1,042.46'$   
 $T = 526.88'$   
 $R = 2,910.00'$   
SE = SEE PLANS  
RO = SEE PLANS

-L-  
PI Sta 32+59.39  
 $\Delta = 2^\circ 55' 03.4''$  (RT)  
 $D = 0' 32' 07.7''$   
 $L = 544.87'$   
 $T = 272.49'$   
 $R = 10,700.00'$   
SE = SEE PLANS  
RO = SEE PLANS



STA. 25+11 -L- RT  
STA. 27+90 -L- RT  
NOTE: SEE SHEET NO. 5 FOR -L- PROFILE  
SEE SHEETS S-1 THRU S- FOR STRUCTURE PLANS  
TRAFFIC IS TO BE MAINTAINED WITH AN OFF SITE DETOUR

8/17/99  
21-APR-2010 09:42  
R:\Environmental\Design\B-4133\_EC.dwg  
at: RENV26546