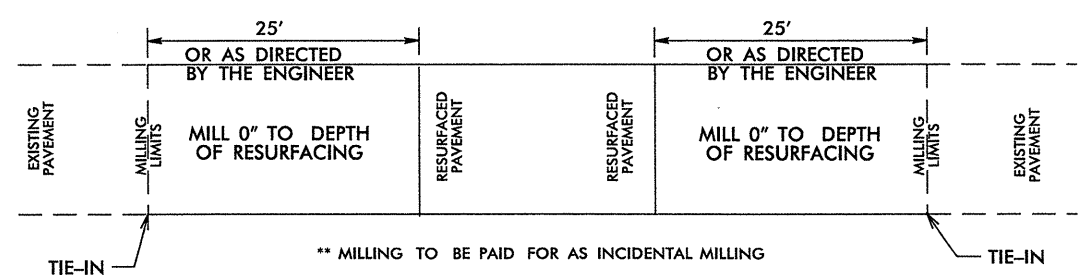
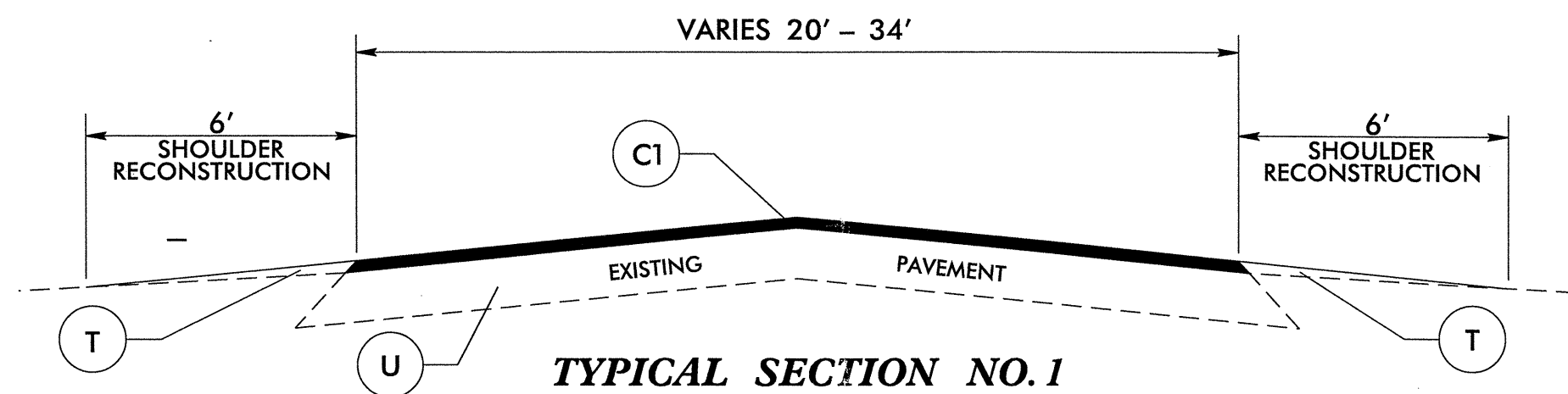


SCOTLAND COUNTY

ALL INFORMATION ON THIS MAP IS UNCLASSIFIED
 DATE 08-20-2013 BY 60322 UCBAW/STP/STP

SCOTLAND COUNTY TYPICAL SECTIONS



PAVEMENT TIE-IN DETAIL

PAVEMENT SCHEDULE

C1	PROP. APPROX. 1.5" ASPHALT CONCRETE SURFACE COURSE, TYPE S9.5B, AT AN AVERAGE RATE OF 168 LBS. PER SQ. YD.
T	EARTH MATERIAL.
U	EXISTING PAVEMENT.

PROJECT NO.	SHEET NO.	TOTAL NO.
8C.083065, 8C.083066 8C.083067, ETC.	3	6

SUMMARY OF QUANTITIES

PROJECT NO	COUNTY	MAP NO	ROUTE	DESCRIPTION	TYP	FINAL SURFACE TESTING REQUIRED	LENGTH MI	WIDTH FT	BORROW EXCAVATION CY	INCIDENTAL STONE BASE TONS	SHOULDER RECONSTRUCTION SMI	INCIDENTAL MILLING SY	SURFACE COURSE, S9.5B TONS	PG 64-22 PLANT MIX TONS	TEMP. SILT FENCE LF	EROSION CONTROL STONE, CLASS B TON	SEDIMENT CONTROL STONE TON	TEMP. MULCHING ACR	MATTING (EROSION CONTROL) SY	1/4" HARDWARE CLOTH LF	WATTLE LF	SEED & MULCHING AC	SEED FOR REPAIR SEEDING LB	FERTILIZER FOR REPAIR SEEDING TON
8C.083065	Scotland	1	SR 1105	FROM SR 1300 TO NC 144	1	NO	2.11	20	550	200	4.22	800	2,185	131	211	53	53	2.11	20	106	40	2.60	100	0.53
TOTAL FOR MAP NO. 1							2.11		550	200	4.22	800	2,185	131	211	53	53	2.11	20	106	40	2.60	100	0.53
TOTAL FOR PROJ NO. 8C.083065							2.11		550	200	4.22	800	2,185	131	211	53	53	2.11	20	106	40	2.60	100	0.53
8C.083066	Scotland	2	SR 1436	FROM SR 1435 TO US 74 BUSINESS	1	NO	1.54	24-34	200	250	3.08	1,000	2,970	178	154	40	40	1.54	20	77	30	1.90	75	0.40
TOTAL FOR MAP NO. 2							1.54		200	250	3.08	1,000	2,970	178	154	40	40	1.54	20	77	30	1.90	75	0.40
TOTAL FOR PROJ NO. 8C.083066							1.54		200	250	3.08	1,000	2,970	178	154	40	40	1.54	20	77	30	1.90	75	0.40
8C.083067	Scotland	3	SR 1403	FROM SR 1418 TO SR 1407	1	NO	2.95	22	400	250	5.90	400	3,360	202	295	75	75	2.95	20	150	50	3.60	150	0.75
TOTAL FOR MAP NO. 3							2.95		400	250	5.90	400	3,360	202	295	75	75	2.95	20	150	50	3.60	150	0.75
TOTAL FOR PROJ NO. 8C.083067							2.95		400	250	5.90	400	3,360	202	295	75	75	2.95	20	150	50	3.60	150	0.75
8C.083068	Scotland	4	SR 1434	FROM SR 1407 TO SR 1435	1	NO	3.2	22	450	250	6.40	800	3,645	219	320	80	80	3.20	20	160	50	3.90	160	0.80
TOTAL FOR MAP NO. 4							3.2		450	250	6.40	800	3,645	219	320	80	80	3.20	20	160	50	3.90	160	0.80
TOTAL FOR PROJ NO. 8C.083068							3.2		450	250	6.40	800	3,645	219	320	80	80	3.20	20	160	50	3.90	160	0.80
8C.083069	Scotland	5	SR 1433	FROM SR 1323 TO SR 1407	1	NO	4.26	22	600	300	8.52	800	4,850	291	426	107	107	4.30	30	213	70	5.00	213	1.07
TOTAL FOR MAP NO. 5							4.26		600	300	8.52	800	4,850	291	426	107	107	4.30	30	213	70	5.00	213	1.07
TOTAL FOR PROJ NO. 8C.083069							4.26		600	300	8.52	800	4,850	291	426	107	107	4.30	30	213	70	5.00	213	1.07
8C.083070	Scotland	6	SR 1614	FROM SR 1601 TO US 501	1	NO	1.42	21	200	150	2.84	800	1,545	93	142	36	36	1.42	20	70	30	1.72	70	0.36
TOTAL FOR MAP NO. 6							1.42		200	150	2.84	800	1,545	93	142	36	36	1.42	20	70	30	1.72	70	0.36
TOTAL FOR PROJ NO. 8C.083070							1.42		200	150	2.84	800	1,545	93	142	36	36	1.42	20	70	30	1.72	70	0.36
GRAND TOTAL							15.48		2,400	1,400	30.96	4,600	18,555	1,114	1,548	391	391	15.52	130	776	270	18.72	768	3.91

PROJECT NO.	SHEET NO.	TOTAL NO.
8C.083065, 8C.083066 8C.083067, ETC.	4	6

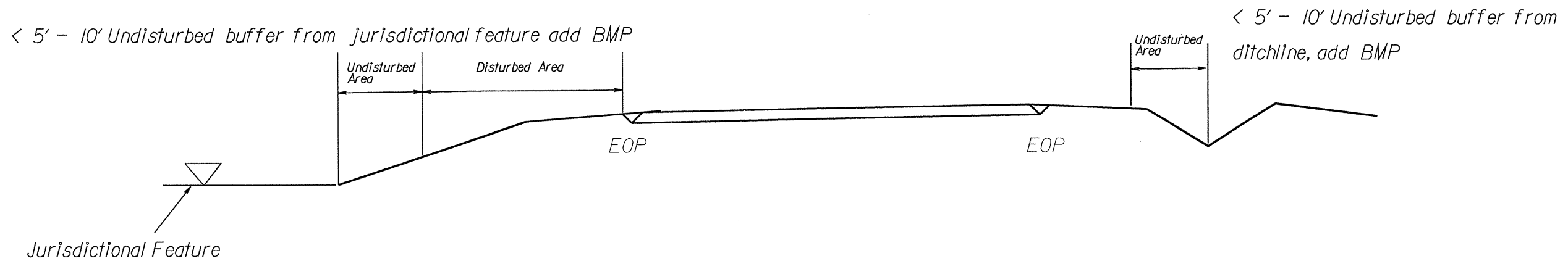
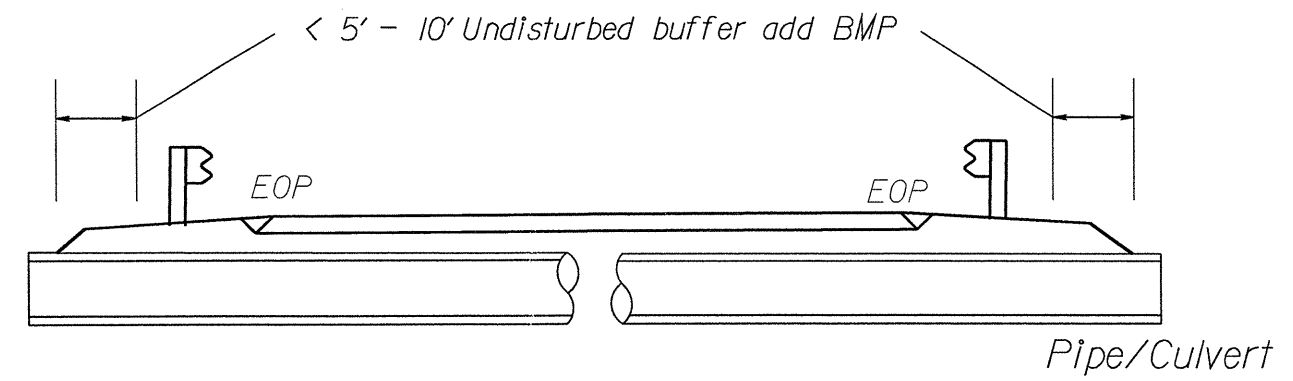
THERMOPLASTIC AND PAINT QUANTITIES

PROJECT NO	COUNTY	MAP NO	ROUTE	DESCRIPTION	4589000000-N	4685000000-E	4686000000-E			4705000000-E	4710000000-E	4721000000-E			4725000000-E			4810000000-E		4900000000-N		
					GENERIC TRAFFIC CONTROL ITEM TRAFFIC CONTROL LS	4" X 90 M WHITE THERMO LF	4" X 120 M WHITE THERMO LF	4" X 120 M YELLOW THERMO LF	16" X 120 M WHITE THERMO LF	24" X 120 M WHITE THERMO LF	THERMO RXR 120 M EA	THERMO MSG SCHOOL 120 M EA	THERMO LT ARROW 90 M EA	THERMO RT ARROW 90 M EA	THERMO STR & RT ARROW 90 M EA	4" WHITE PAINT LF	4" YELLOW PAINT LF	YELLOW & YELLOW MARKERS EA	CRYSTAL & RED MARKERS EA			
8C.083065	Scotland	1	SR 1105	FROM SR 1300 TO NC 144														44,563	31,194			
TOTAL FOR MAP NO. 1																		44,563	31,194			
TOTAL FOR PROJ NO. 8C.083065																		44,563	31,194			
																		75,757				
8C.083066	Scotland	2	SR 1436	FROM SR 1435 TO US 74 BUSINESS		16,262	500	13,010	100	98	4		17	6	1					190	20	
TOTAL FOR MAP NO. 2						16,262	500	13,010	100	98	4		17	6	1						190	20
TOTAL FOR PROJ NO. 8C.083066						16,262	500	13,010	100	98	4		17	6	1					190	20	
								13,510			4		24								210	
8C.083067	Scotland	3	SR 1403	FROM SR 1418 TO SR 1407														62,304	43,613			
TOTAL FOR MAP NO. 3																		62,304	43,613			
TOTAL FOR PROJ NO. 8C.083067																		62,304	43,613			
																		105,917				
8C.083068	Scotland	4	SR 1434	FROM SR 1407 TO SR 1435		33,792		23,654												212		
TOTAL FOR MAP NO. 4						33,792		23,654													212	
TOTAL FOR PROJ NO. 8C.083068						33,792		23,654													212	
								23,654													212	
8C.083069	Scotland	5	SR 1433	FROM SR 1323 TO SR 1407														89,971	62,980	282		
TOTAL FOR MAP NO. 5																		89,971	62,980	282		
TOTAL FOR PROJ NO. 8C.083069																		89,971	62,980	282		
																		152,951			282	
8C.083070	Scotland	6	SR 1614	FROM SR 1601 TO US 501		14,995		11,996		100		12								94		
TOTAL FOR MAP NO. 6						14,995		11,996		100		12									94	
TOTAL FOR PROJ NO. 8C.083070						14,995		11,996		100		12									94	
								11,996				12									94	
GRAND TOTAL					1	65,049	500	48,660	100	198	4	12	17	6	1			196,838	137,787	778	20	
								49,160				16		24				334,625			798	

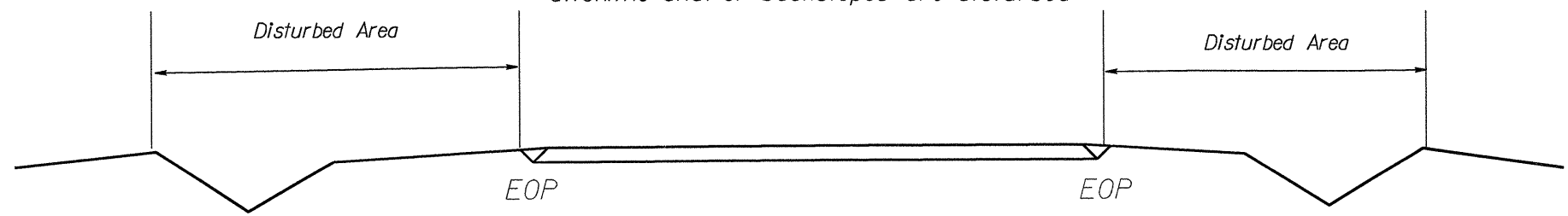
NOTES: Less than 5' - 10' undisturbed buffer from ROW, ditchline, water feature, or drainage inlet, add BMP.

BMP Options: Wattle or Silt Fence

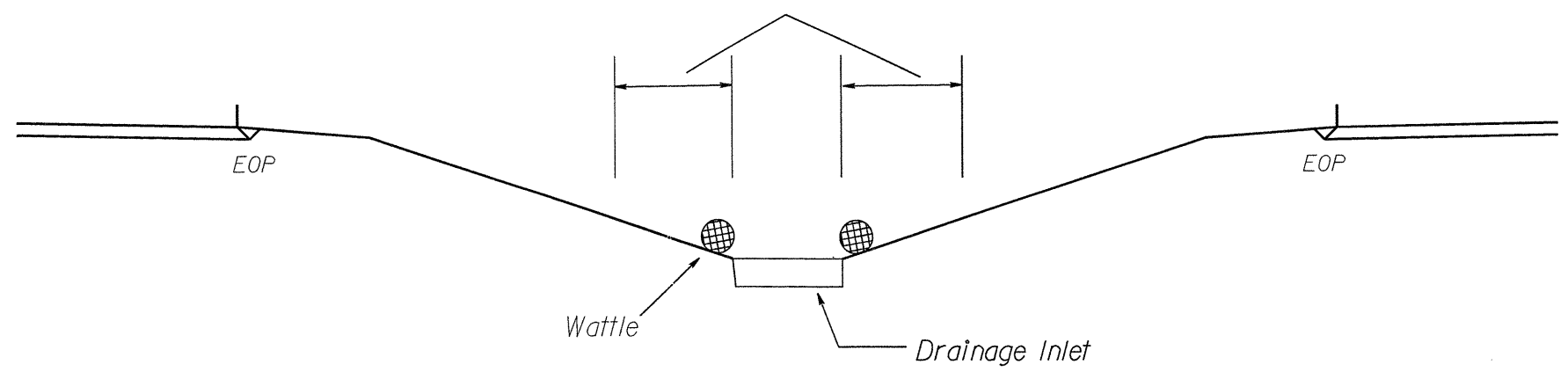
EROSION CONTROL DETAIL



Use BMP's if shoulders and/or frontslopes and/or ditchline and/or backslopes are disturbed

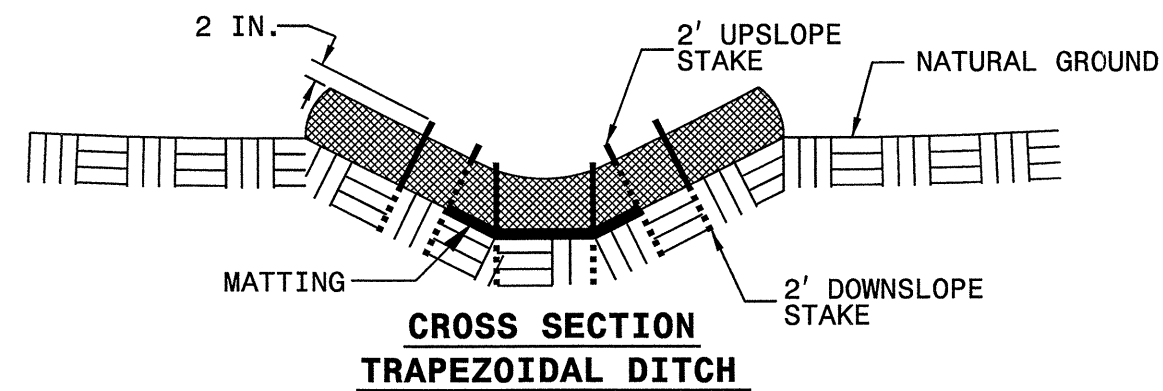
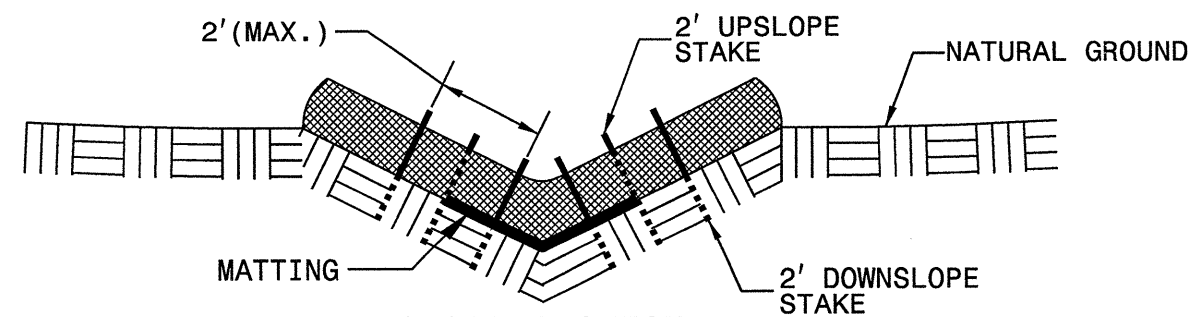
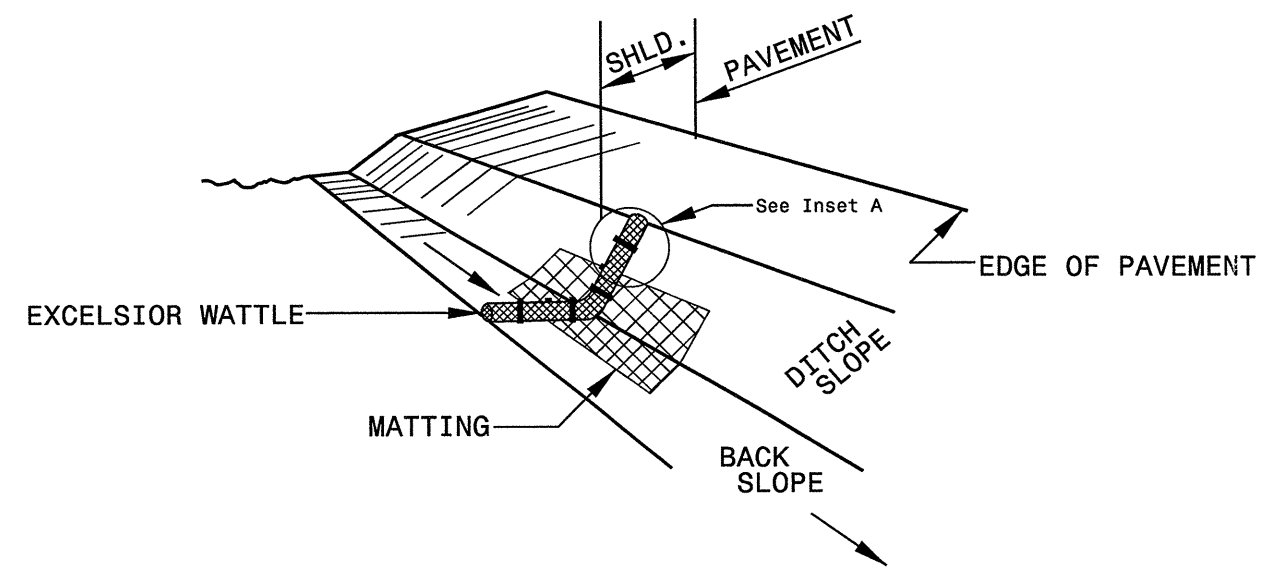


< 5' - 10' Undisturbed buffer from inlet, add wattle



NOT TO SCALE

WATTLE DETAIL



NOTES:

USE MINIMUM 12 IN. DIAMETER EXCELSIOR WATTLE.

USE 2 FT. WOODEN STAKES WITH A 2 IN. BY 2 IN. NOMINAL CROSS SECTION.

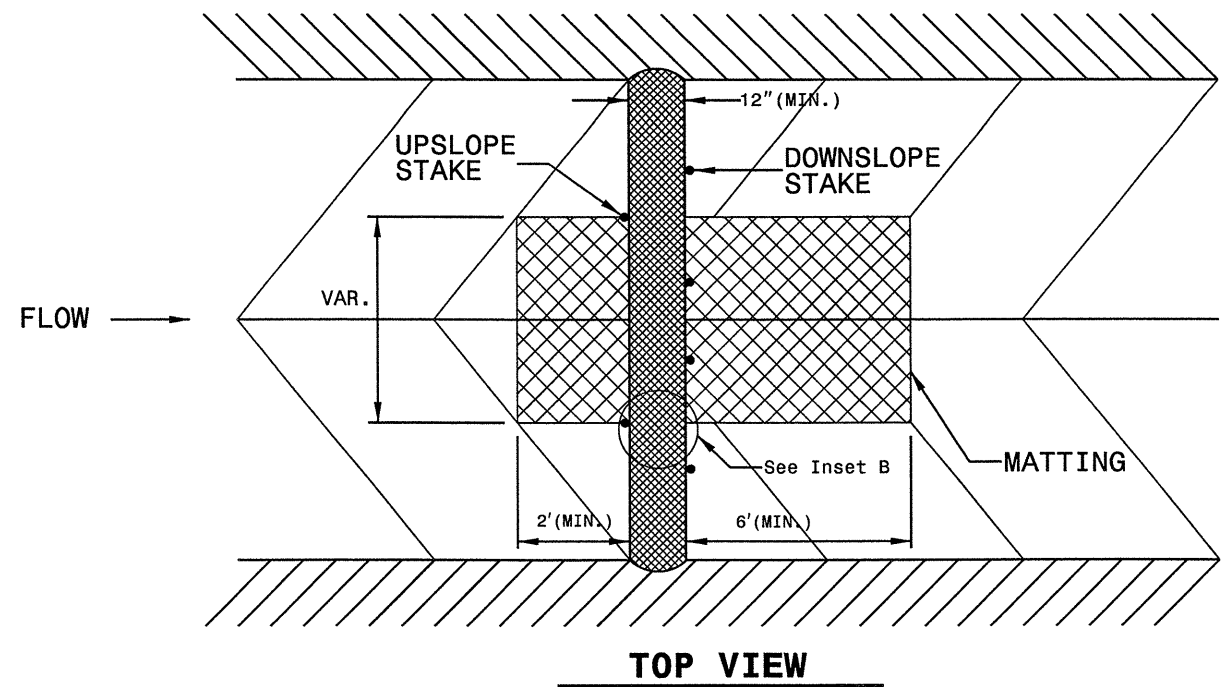
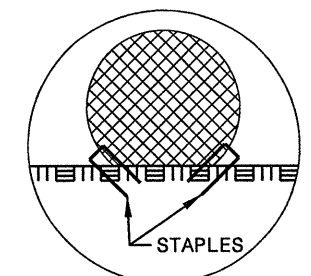
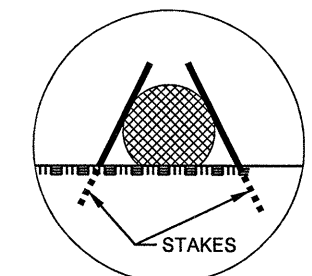
ONLY INSTALL WATTLE(S) TO A HEIGHT IN DITCH SO FLOW WILL NOT WASH AROUND WATTLE AND SCOUR DITCH SLOPES AND AS DIRECTED.

INSTALL A MINIMUM OF 2 UPSLOPE STAKES AND 4 DOWNSLOPE STAKES AT AN ANGLE TO WEDGE WATTLE TO BOTTOM OF DITCH.

PROVIDE STAPLES MADE OF 0.125 IN. DIAMETER STEEL WIRE FORMED INTO A U SHAPE NOT LESS THAN 12" IN LENGTH.

INSTALL STAPLES APPROXIMATELY EVERY 1 LINEAR FOOT ON BOTH SIDES OF WATTLE AND AT EACH END TO SECURE IT TO THE SOIL.

INSTALL MATTING IN ACCORDANCE WITH SECTION 1631 OF THE STANDARD SPECIFICATIONS.

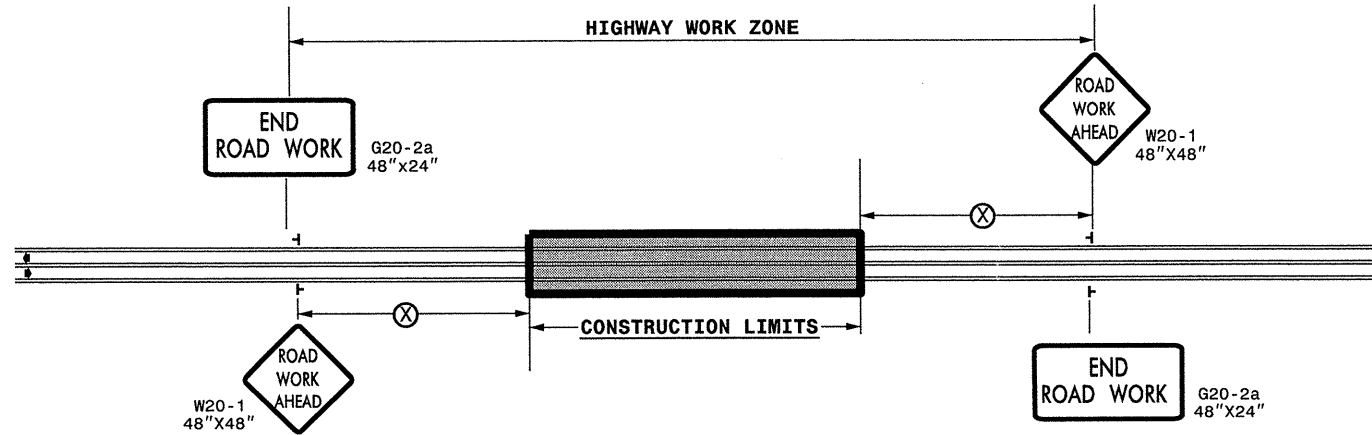


03-JUN-2011 2:17 PM
 \\DOT\DFS\GROUPS-WZTCCC-TMU\WZTC\Resur-facng\2011\Centr-al\2011_Div08_C202801A-F_8C.083065x6_Scotland_USIS_501-174_Jww\lxi17-C202801A-F_8C.083065x6_2way_Undiv-&Urban_Fr.wys-stationary.dgn
 jwwies AT 1E247530

8C.083065 8C.083066 8C.083067
 8C.083068 8C.083069 8C.083070

PROJ. REFERENCE NO.	SHEET NO.
SEE LEFT	TCP-1

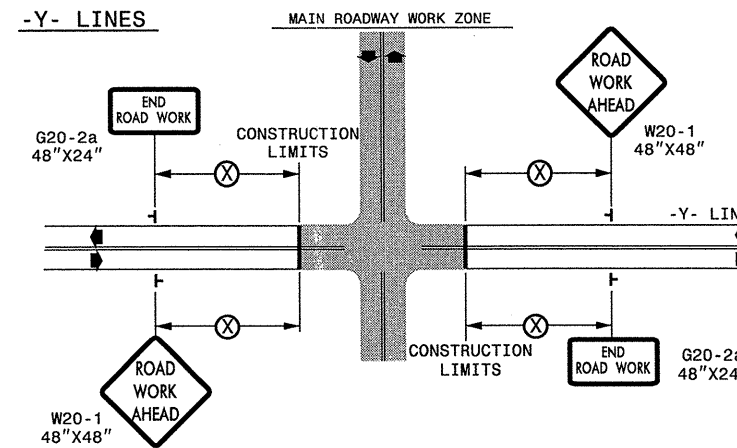
TWO-WAY UNDIVIDED ** (L-LINES)



POSTED SPEED LIMIT (M.P.H.)	RECOMMENDED MINIMUM SIGN SPACING
≤ 50	500'
≥ 55	1000'

STATE OF NORTH CAROLINA
 DEPT. OF TRANSPORTATION
 DIVISION OF HIGHWAYS
 RALEIGH, N.C.

ROADWAYS INTERSECTING ALONG 2 WAY UNDIVIDED WORK ZONE (Y-LINES)



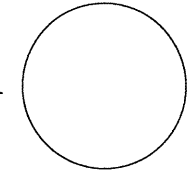

GENERAL NOTES

- USE FLUORESCENT ORANGE SHEETING (TYPE VII OR HIGHER) ON ALL ADVANCED WORK ZONE SIGNS.
- DO NOT INSTALL ADVANCE WARNING SIGNS MORE THAN 3 DAYS PRIOR TO BEGINNING OF WORK.
- SIGNS SHOWN ARE REQUIRED FOR WORK ZONES THAT WILL REMAIN IN EFFECT OVERNIGHT. FOR SHORT-TERM DAILY MAINTENANCE TYPE OPERATIONS, THIS SIGNING APPLICATION IS OPTIONAL; MAY USE ONLY APPLICABLE ROADWAY STANDARD DRAWINGS INSTEAD. HOWEVER, IF THIS SIGNING APPLICATION IS USED, SIGNS MAY BE PORTABLE MOUNTED.
- ALL SIGN SPACING DIMENSIONS ARE APPROXIMATE, FIELD ADJUST AS NECESSARY OR AS DIRECTED.
- USE 3LB STEEL U-CHANNEL POST OR 4" X 4" WOOD POST FOR ALL WORK ZONE SIGNS. 3LB STEEL U-CHANNEL POSTS MUST MEET THE REQUIREMENTS OF STANDARD SPECIFICATION SECTION 1094-1(B), MAY BE GALVANIZED STEEL, OR MAY BE PAINTED GREEN BY THE POST MANUFACTURER. SQUARE STEEL TUBING POSTS HAVING EQUIVALENT STRENGTH OF THE 3 LB STEEL U-CHANNEL POST ARE ALSO ACCEPTABLE FOR USE. ERECT SIGNS PER ROADWAY STANDARD DRAWING 1110.01. PAYMENT FOR WOOD POSTS, 3LB STEEL U-CHANNEL AND SQUARE STEEL TUBING POSTS WITH SIGNS WILL BE MADE ACCORDING TO STANDARD SPECIFICATION "WORK ZONE SIGNS" SECTION 1110.
- WHEN NECESSARY, USE SPLICING IN ACCORDANCE WITH ROADWAY STANDARD DRAWING NO. 1110.01. REMOVE ENTIRE POST WHEN REMOVING SIGNS WITH SPLICED POSTS.
- DO NOT BACK BRACE SIGN SUPPORTS.
- ** TWO-WAY UNDIVIDED ADVANCE WARNING SIGN CONFIGURATION MAY BE USED ON URBAN MULTI-LANE FACILITIES WHERE CONDITIONS LIMIT THE USE OF DUAL MOUNTED SIGNS AS DETERMINED BY THE ENGINEER.

LEGEND

- ┆ STATIONARY SIGN
- ◀ DIRECTION OF TRAFFIC FLOW

SHEET 1 OF 1

APPROVED: _____ DATE: _____	DETAIL DRAWING FOR TWO-WAY UNDIVIDED AND URBAN FREEWAYS ADVANCED WORK ZONE WARNING SIGNS	
SEAL 		
SCALE: NONE		REVISIONS
DATE: _____		7-98 10/01
DWG. BY: _____		10-98 03/04
DESIGN BY: _____		01/01 11/04
REVIEWED BY: _____	CADD FILE	