

STATE	PROJECT NO.	SHEET NO.	TOTAL SHEETS
N.C.	IOCR.10131.22, etc.	1	
F.A. PROJECT NO.			



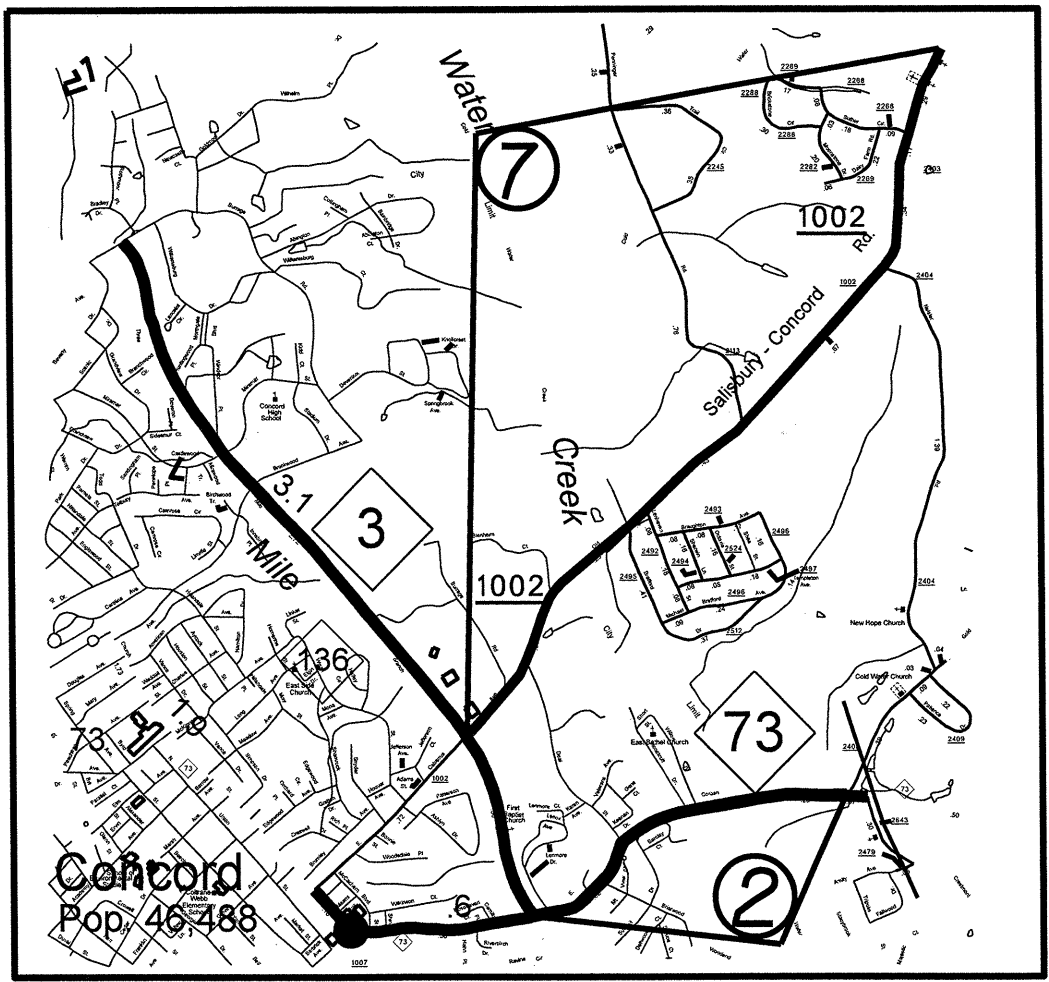
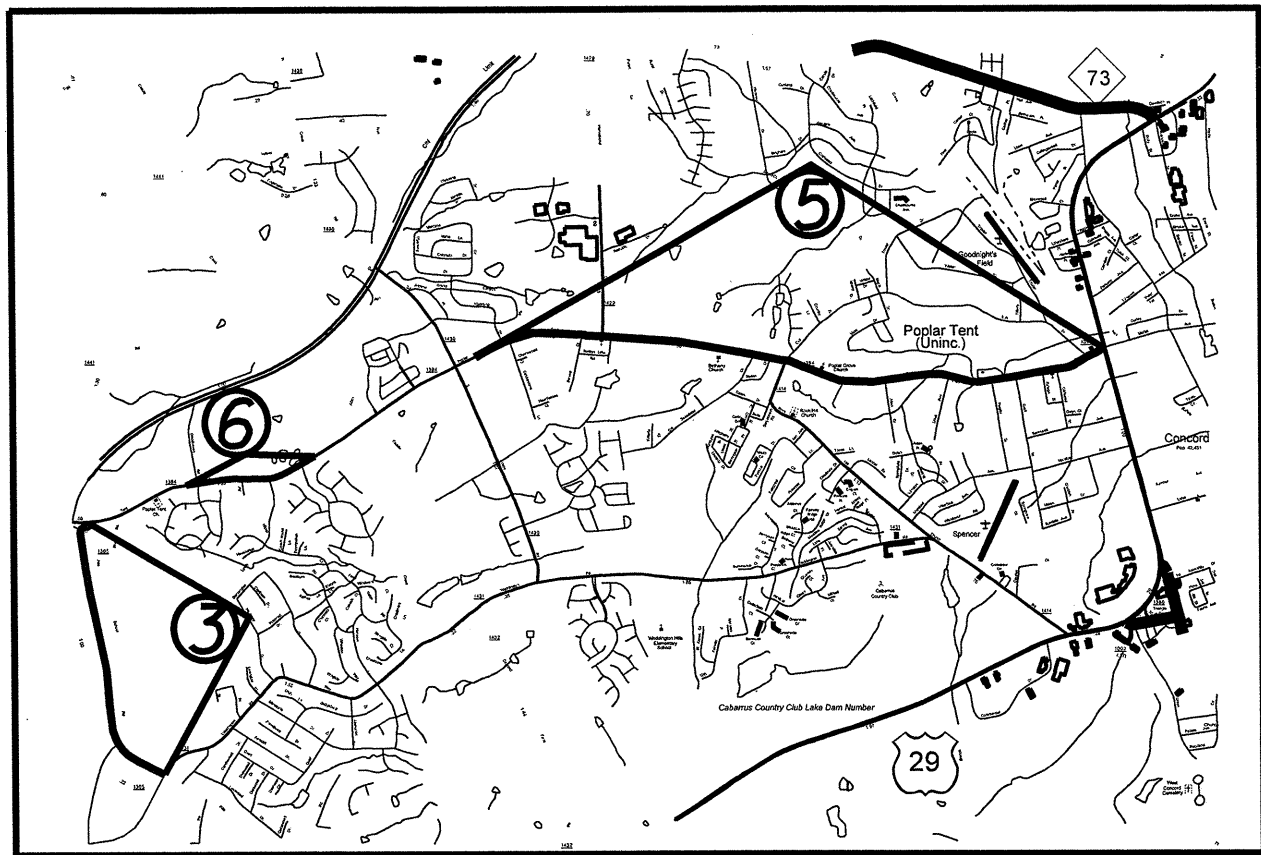
ENLARGED MUNICIPAL AND SUBURBAN AREAS

**CABARRUS COUNTY**

NORTH CAROLINA

PREPARED BY THE  
NORTH CAROLINA DEPARTMENT OF TRANSPORTATION  
DIVISION OF HIGHWAYS - GIS UNIT

MAP #	ROUTE	DESCRIPTION
1	NC 24/27	FROM BEGIN C&G SECTION TO END C&G SECTION
2	NC 73	FROM SR 2408 (GOLD HILL RD) TO NC 3
3	SR 1305 (PITTS SCHOOL RD)	FROM SR 1394 (POPLAR TENT RD) TO SR 1431 (WEDDINGTON RD)
4	SR 1166 (TOM QUERY RD)	FROM SR 1168 (ROBINSON CH RD) TO MECKLENBURG COUNTY LINE
5	SR 1394 (POPLAR TENT RD)	FROM US 29 TO SR 1430 (GEORGE LILES BLVD)
6	SR 1394 (POPLAR TENT RD)	FROM JOINT AT BRIDGE TO JOINT @ I-85 TIP PROJECT
7	SR 1002 (OLD SALISBURY CONCORD RD)	FROM NC 73 TO PAVEMENT JOINT @ SR 2113 (PENNINGER RD)
8	SR 1300 (MOREHEAD RD)	FROM PAVEMENT JOINT @ S HUDSEPH RD TO ROCKY RIVER CROSSING SUBDIVISION
9	SR 1132 (FLOWE STORE RD)	FROM SR 1147 (FLOWE STORE RD EAST) TO NC 24/27



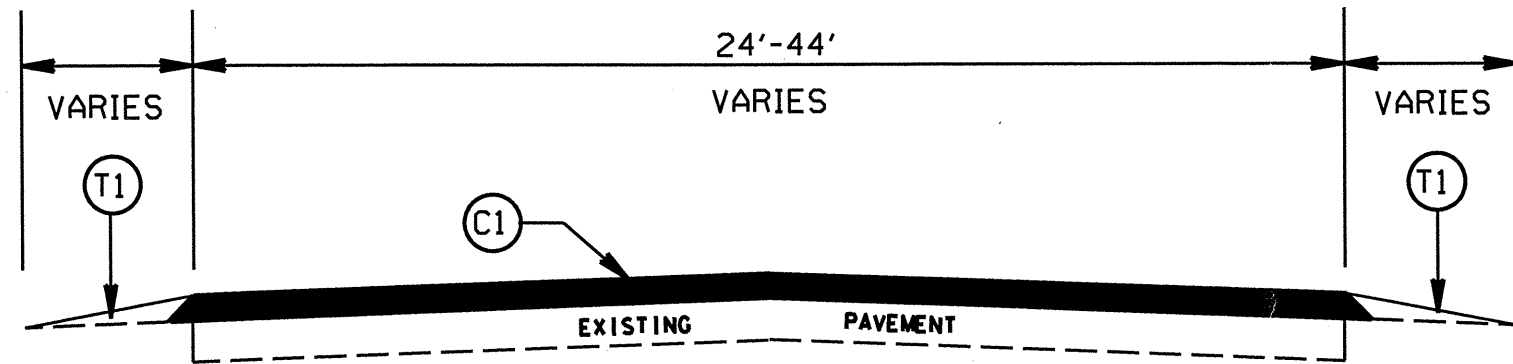
STATE	PROJECT NO.	SHEET NO.	TOTAL SHEETS
N.C.	IOCR.10131.22, etc.	2	
F.A. PROJECT NO.			



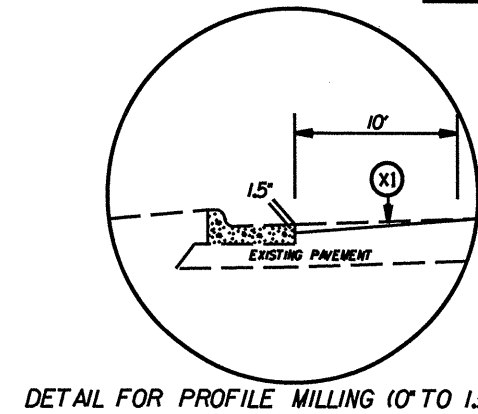
ENLARGED MUNICIPAL AND SUBURBAN AREAS  
**CABARRUS COUNTY**  
 NORTH CAROLINA  
PREPARED BY THE  
 NORTH CAROLINA DEPARTMENT OF TRANSPORTATION  
 DIVISION OF HIGHWAYS - GIS UNIT

MAP #	ROUTE	DESCRIPTION
1	NC 24/27	FROM BEGIN C&G SECTION TO END C&G SECTION
2	NC 73	FROM SR 2408 (GOLD HILL RD) TO NC 3
3	SR 1305 (PITTS SCHOOL RD)	FROM SR 1394 (POPLAR TENT RD) TO SR 1431 (WEDDINGTON RD)
4	SR 1166 (TOM QUERY RD)	FROM SR 1168 (ROBINSON CH RD) TO MECKLENBURG COUNTY LINE
5	SR 1394 (POPLAR TENT RD)	FROM US 29 TO SR 1430 (GEORGE LILES BLVD)
6	SR 1394 (POPLAR TENT RD)	FROM JOINT AT BRIDGE TO JOINT @ I-85 TIP PROJECT
7	SR 1002 (OLD SALISBURY CONCORD RD)	FROM NC 73 TO PAVEMENT JOINT @ SR 2113 (PENNINGER RD)
8	SR 1300 (MOREHEAD RD)	FROM PAVEMENT JOINT @ S HUDSETH RD TO ROCKY RIVER CROSSING SUBDIVISION
9	SR 1132 (FLOWE STORE RD)	FROM SR 1147 (FLOWE STORE RD EAST) TO NC 24/27

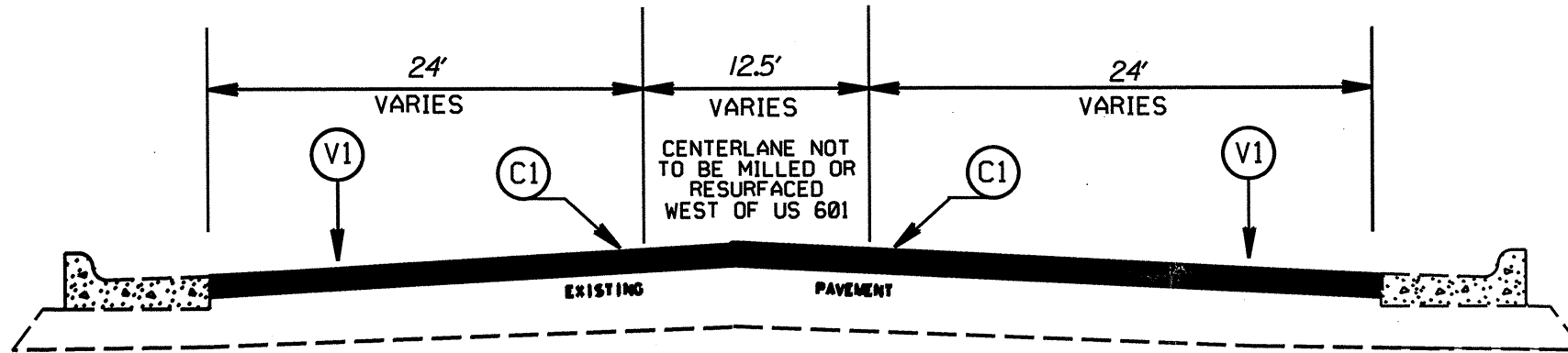
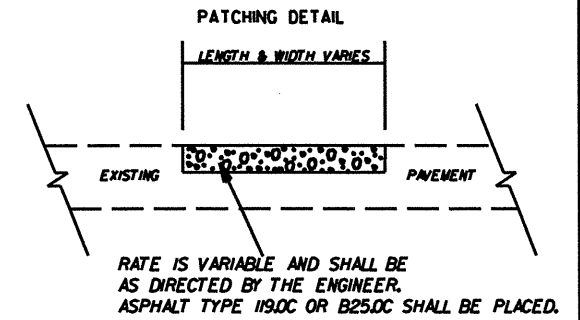
STATE	PROJECT NO.	SHEET NO.	TOTAL SHEETS
N.C.	10CR.10131.22 etc.	3	
F.A. PROJECT NO.			



TYPICAL SECTION NO. 3



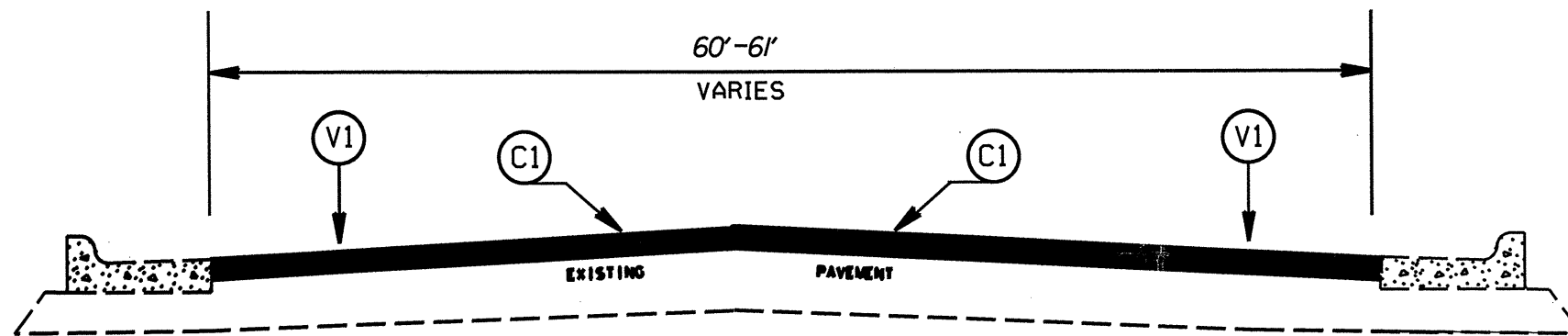
DETAIL FOR PROFILE MILLING (0" TO 1.5")



TYPICAL SECTION NO. 2

NOTE: ONLY EASTBOUND AND WESTBOUND TRAVEL LANES TO BE MILLED AND FILLED WEST OF US 601 TO THE END OF CURB & GUTTER SECTION

PAVEMENT SCHEDULE	
C1	PROP. APPROX. 1.5" ASPHALT CONCRETE SURFACE COURSE, TYPE S9.5C, AT AN AVERAGE RATE OF 168 LBS. PER SQ. YD.
C2	PROP. APPROX. 1.5" ASPHALT CONCRETE SURFACE COURSE, TYPE S9.5B, AT AN AVERAGE RATE OF 168 LBS. PER SQ. YD.
T1	SHOULDER RECONSTRUCTION
V1	MILLING BITUMINOUS PAVEMENT 1.5" DEPTH.
X1	PROFILE MILLING BITUMINOUS PAVEMENT 0" TO 1.5" DEPTH.

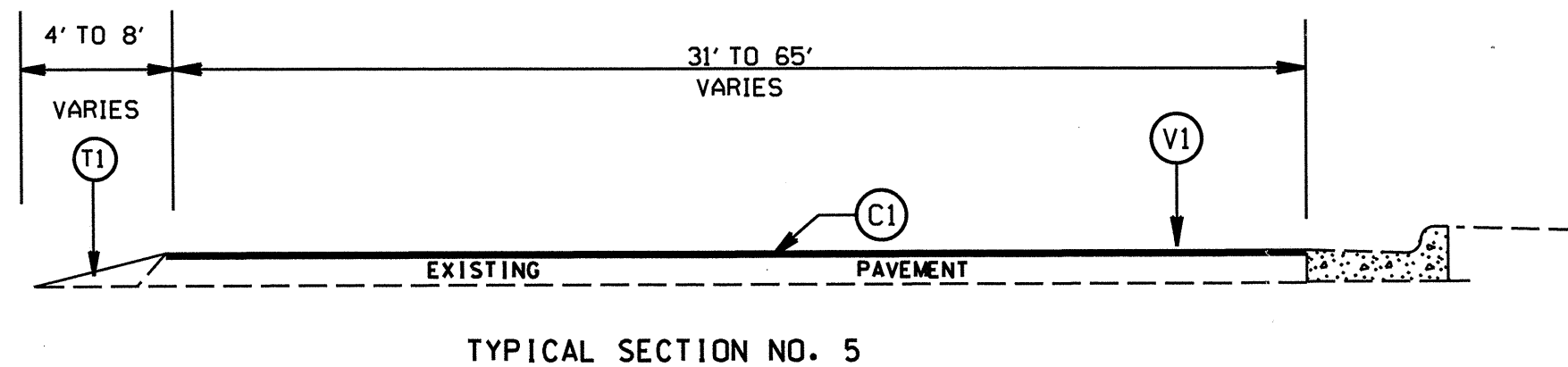
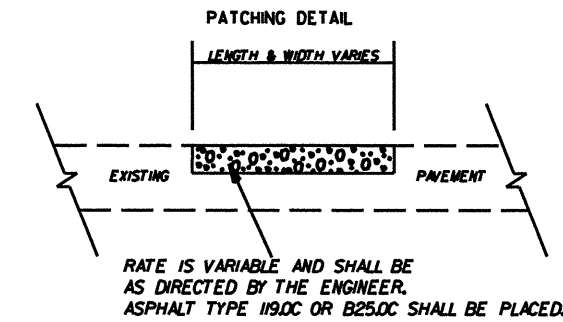
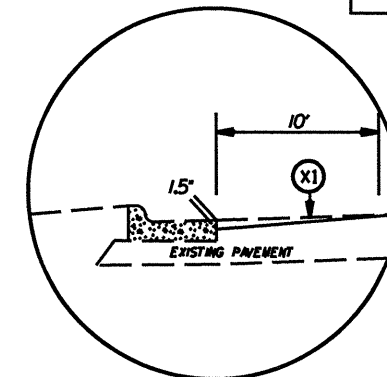
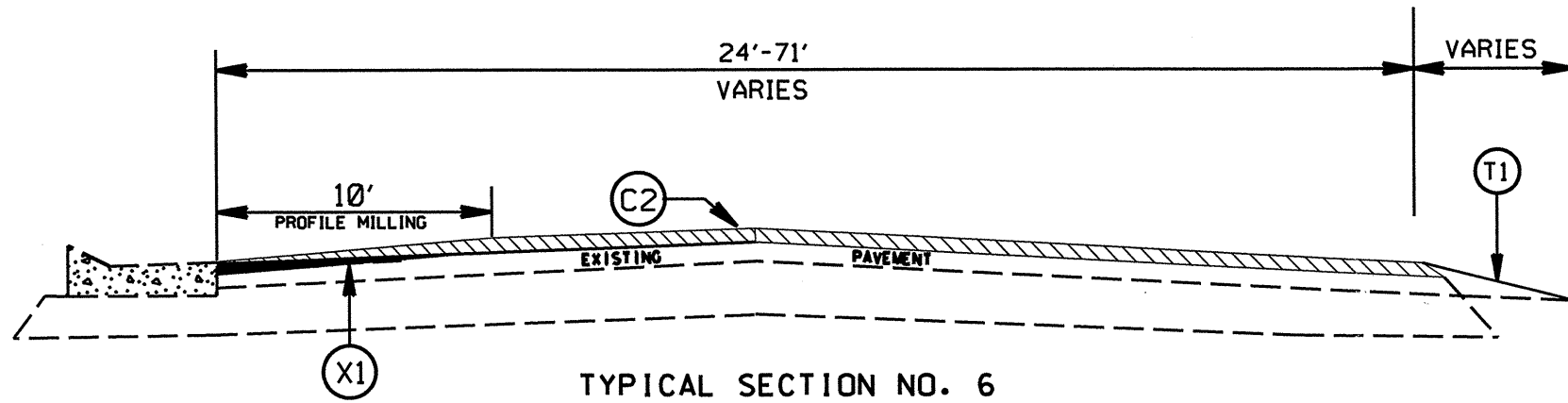


TYPICAL SECTION NO. 1

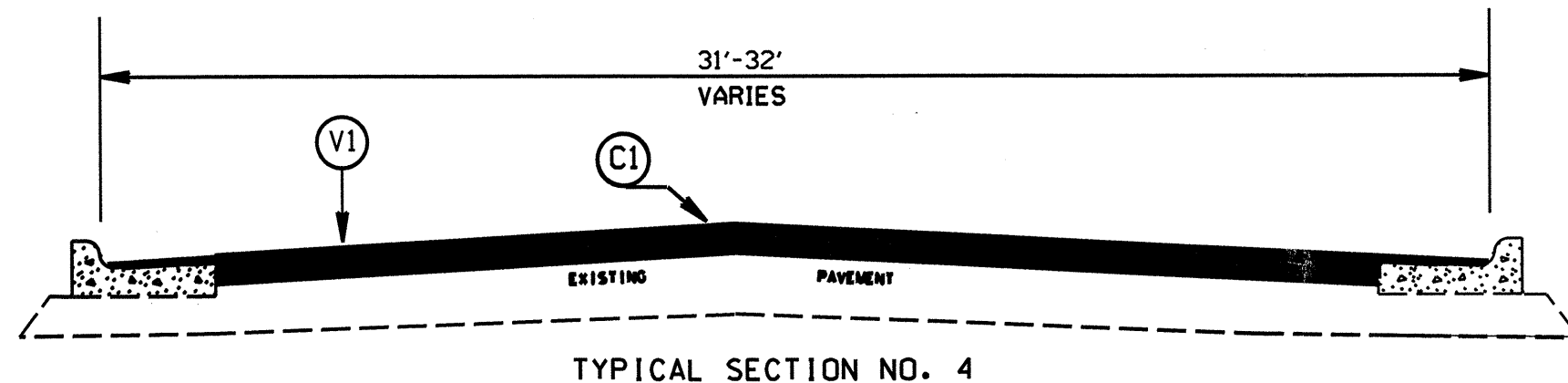
CABARRUS COUNTY  
RESURFACING 2012

SCALE	-NA-		REVISIONS
DATE	5/11		
DWG. BY	JDA		
DESIGN BY	JDA		
APPROVED	MPM		

STATE	PROJECT NO.	SHEET NO.	TOTAL SHEETS
N.C.	IOCR.10131.22 etc.	4	
F.A. PROJECT NO.			



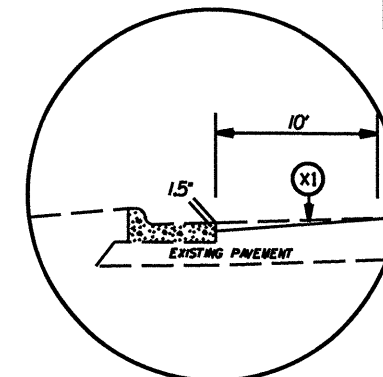
PAVEMENT SCHEDULE	
C1	PROP. APPROX. 1.5" ASPHALT CONCRETE SURFACE COURSE, TYPE S9.5C, AT AN AVERAGE RATE OF 168 LBS. PER SQ. YD.
C2	PROP. APPROX. 1.5" ASPHALT CONCRETE SURFACE COURSE, TYPE S9.5B, AT AN AVERAGE RATE OF 168 LBS. PER SQ. YD.
T1	SHOULDER RECONSTRUCTION
V1	MILLING BITUMINOUS PAVEMENT 1.5" DEPTH.
X1	PROFILE MILLING BITUMINOUS PAVEMENT. 0. TO 1.5" DEPTH.



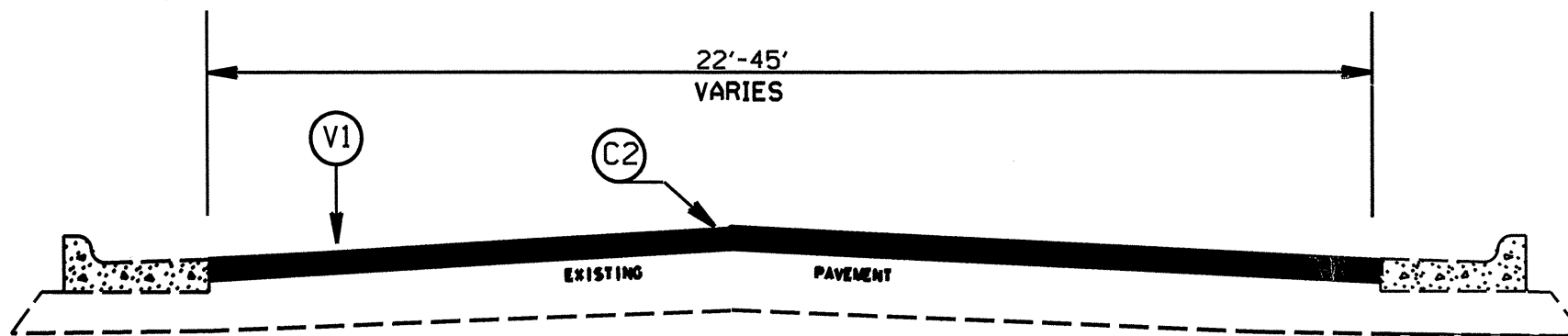
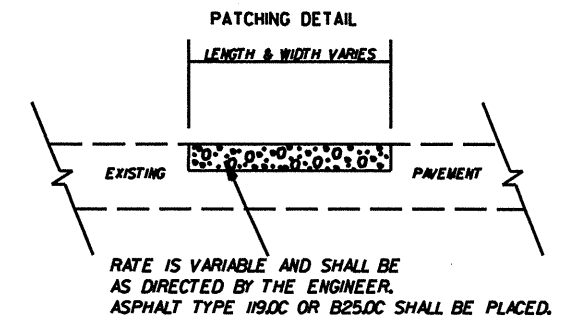
CABARRUS COUNTY  
RESURFACING 2012

SCALE	-NA-		REVISIONS
DATE	5/11		
DWG. BY	JDA		
DESIGN BY	JDA		
APPROVED	MPW		

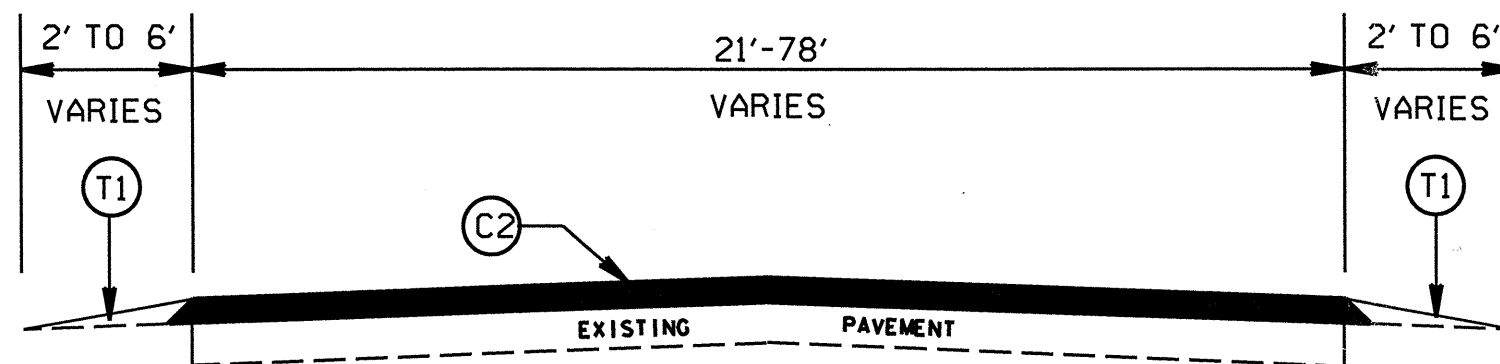
STATE	PROJECT NO.	SHEET NO.	TOTAL SHEETS
N.C.	10CR.10131.22 etc.	5	
F.A. PROJECT NO.			



DETAIL FOR PROFILE MILLING (0" TO 1.5")



TYPICAL SECTION NO. 8



TYPICAL SECTION NO. 7

PAVEMENT SCHEDULE	
C1	PROP. APPROX. 1.5" ASPHALT CONCRETE SURFACE COURSE, TYPE S9.5C, AT AN AVERAGE RATE OF 168 LBS. PER SQ. YD.
C2	PROP. APPROX. 1.5" ASPHALT CONCRETE SURFACE COURSE, TYPE S9.5B, AT AN AVERAGE RATE OF 168 LBS. PER SQ. YD.
T1	SHOULDER RECONSTRUCTION
V1	MILLING BITUMINOUS PAVEMENT 1.5" DEPTH.
X1	PROFILE MILLING BITUMINOUS PAVEMENT. 0. TO 1.5" DEPTH.

CABARRUS COUNTY  
RESURFACING 2012

SCALE	-NA-		REVISIONS
DATE	5/11		
DWG. BY	JDA		
DESIGN BY	JDA		
APPROVED	MPM		

PROJECT NO.	SHEET NO.	TOTAL NO.
10CR.10131.22, 10CR.10131.23 1CR.20131.66, ETC.	6	

### SUMMARY OF QUANTITIES

PROJECT NO	COUNTY	MAP NO	ROUTE	DESCRIPTION	TYP	FINAL SURFACE TESTING REQUIRED	AGGREGATE SHOULDER BORROW ALLOWED	LENGTH MI	WIDTH FT	BORROW EXCAVATION CY	INCIDENTAL STONE BASE TONS	SHOULDER RECONSTRUCTION SMI	1 1/2" MILLING SY	0" TO 1.5" MILLING SY	INCIDENTAL MILLING SY	SURFACE COURSE, S9.5B TONS	LEVELING COURSE, S9.5B TONS	SURFACE COURSE, S9.5C TONS	LEVELING COURSE, S9.5C TONS	PG 64-22 PLANT MIX TONS	PG 70-22 PLANT MIX TONS	PATCHING EXISTING PAVEMENT TONS	ADJ. OF MANHOLES EA	ADJ. OF METER OR VALVE BOX EA	TEMPORARY SILT FENCE LF	MATTING (EROSION CONTROL) SY	WATTLE LF
10CR.10131.22	Cabarrus	1	NC 24/27	FROM BEGIN CURB & GUTTER TO END CURB & GUTTER, END OF 5 LANE SECTION	1,2	NO	NO	3.81	61				114,062					10,539	100		639	950		1			
<b>TOTAL FOR MAP NO. 1</b>								<b>3.81</b>					<b>114,062</b>					<b>10,539</b>	<b>100</b>		<b>639</b>	<b>950</b>		<b>1</b>			
<b>TOTAL FOR PROJ NO. 10CR.10131.22</b>								<b>3.81</b>					<b>114,062</b>					<b>10,539</b>	<b>100</b>		<b>639</b>	<b>950</b>		<b>1</b>			
10CR.10131.23	Cabarrus	2	NC 73	FROM SR 2408 (GOLD HILL RD) TO NC 3	3,4,5	NO	NO	1.1	32	52	55	1.30	8,580					1,916	300		134	385	2	4	300	512	320
<b>TOTAL FOR MAP NO. 2</b>								<b>1.1</b>		<b>52</b>	<b>55</b>	<b>1.30</b>	<b>8,580</b>					<b>1,916</b>	<b>300</b>		<b>134</b>	<b>385</b>	<b>2</b>	<b>4</b>	<b>300</b>	<b>512</b>	<b>320</b>
<b>TOTAL FOR PROJ NO. 10CR.10131.23</b>								<b>1.1</b>		<b>52</b>	<b>55</b>	<b>1.30</b>	<b>8,580</b>					<b>1,916</b>	<b>300</b>		<b>134</b>	<b>385</b>	<b>2</b>	<b>4</b>	<b>300</b>	<b>512</b>	<b>320</b>
1CR.20131.66	Cabarrus	3	SR 1305 (PITTS SCHOOL RD)	FROM ST 1394 (POPLAR TENT RD) TO SR 1431 (WEDDINGTON RD)	6,7	NO	NO	1.33	23	53	67	2.66		111	110	1,959	465			148		535			50	768	480
<b>TOTAL FOR MAP NO. 3</b>								<b>1.33</b>		<b>53</b>	<b>67</b>	<b>2.66</b>		<b>111</b>	<b>110</b>	<b>1,959</b>	<b>465</b>			<b>148</b>		<b>535</b>			<b>50</b>	<b>768</b>	<b>480</b>
<b>TOTAL FOR PROJ NO. 1CR.20131.66</b>								<b>1.33</b>		<b>53</b>	<b>67</b>	<b>2.66</b>		<b>111</b>	<b>110</b>	<b>1,959</b>	<b>465</b>			<b>148</b>		<b>535</b>			<b>50</b>	<b>768</b>	<b>480</b>
10CR.20131.67	Cabarrus	4	SR 1166 (TOM QUERY RD)	FROM SR 1168 (ROBINSON CH. RD) TO MECKLENBURG COUNTY LINE	6,7	NO	NO	1.46	22	58	73	2.92		445	120	1,944	365			140		365			50	768	480
<b>TOTAL FOR MAP NO. 4</b>								<b>1.46</b>		<b>58</b>	<b>73</b>	<b>2.92</b>		<b>445</b>	<b>120</b>	<b>1,944</b>	<b>365</b>			<b>140</b>		<b>365</b>			<b>50</b>	<b>768</b>	<b>480</b>
<b>TOTAL FOR PROJ NO. 10CR.20131.67</b>								<b>1.46</b>		<b>58</b>	<b>73</b>	<b>2.92</b>		<b>445</b>	<b>120</b>	<b>1,944</b>	<b>365</b>			<b>140</b>		<b>365</b>			<b>50</b>	<b>768</b>	<b>480</b>
10CR.20131.68	Cabarrus	5	SR 1394 (POPLAR TENT RD)	FROM US 29 TO PAVEMENT JOINT EAST OF SR 1430 (GEORGE LILES BLVD)	6,7,8	NO	NO	2.89	23	116	145	5.62		960	150	3,843	1,075			300		1,225	2	11	500	1,920	1,200
<b>TOTAL FOR MAP NO. 5</b>								<b>2.89</b>		<b>116</b>	<b>145</b>	<b>5.62</b>		<b>960</b>	<b>150</b>	<b>3,843</b>	<b>1,075</b>			<b>300</b>		<b>1,225</b>	<b>2</b>	<b>11</b>	<b>500</b>	<b>1,920</b>	<b>1,200</b>
<b>TOTAL FOR PROJ NO. 10CR.20131.68</b>								<b>2.89</b>		<b>116</b>	<b>145</b>	<b>5.62</b>		<b>960</b>	<b>150</b>	<b>3,843</b>	<b>1,075</b>			<b>300</b>		<b>1,225</b>	<b>2</b>	<b>11</b>	<b>500</b>	<b>1,920</b>	<b>1,200</b>
10CR.20131.69	Mecklenburg	6	SR 1394 (POPLAR TENT RD)	FROM JOINT AT BRIDGE TO JOINT @ I-85 TIP PROJECT	7	NO	NO	0.55	32	22	28	1.10			110	958	80			63		200	1	3	20	384	240
<b>TOTAL FOR MAP NO. 6</b>								<b>0.55</b>		<b>22</b>	<b>28</b>	<b>1.10</b>			<b>110</b>	<b>958</b>	<b>80</b>			<b>63</b>		<b>200</b>	<b>1</b>	<b>3</b>	<b>20</b>	<b>384</b>	<b>240</b>
<b>TOTAL FOR PROJ NO. 10CR.20131.69</b>								<b>0.55</b>		<b>22</b>	<b>28</b>	<b>1.10</b>			<b>110</b>	<b>958</b>	<b>80</b>			<b>63</b>		<b>200</b>	<b>1</b>	<b>3</b>	<b>20</b>	<b>384</b>	<b>240</b>
10CR.20131.70	Cabarrus	7	SR 1002 (OLD SALISBURY CONCORD RD)	FROM NC 3 TO PAVEMENT JOINT @ SR 2113 (PENNINGER RD)	6,7	NO	NO	2.7	25	108	135	5.40	280	300		3,815	675			273		945		1	400	900	560
<b>TOTAL FOR MAP NO. 7</b>								<b>2.7</b>		<b>108</b>	<b>135</b>	<b>5.40</b>	<b>280</b>	<b>300</b>		<b>3,815</b>	<b>675</b>			<b>273</b>		<b>945</b>		<b>1</b>	<b>400</b>	<b>900</b>	<b>560</b>
<b>TOTAL FOR PROJ NO. 10CR.20131.70</b>								<b>2.7</b>		<b>108</b>	<b>135</b>	<b>5.40</b>	<b>280</b>	<b>300</b>		<b>3,815</b>	<b>675</b>			<b>273</b>		<b>945</b>		<b>1</b>	<b>400</b>	<b>900</b>	<b>560</b>
10CR.20131.71	Cabarrus	8	SR 1300 (MOREHEAD RD)	FROM PAVEMENT JOINT @ S HUDSEPH RD TO ROCKY RIVER CROSSING SUBDIVISION	7	NO	NO	0.9	23	36	45	1.80			110	1,403	350			107		350			400	512	320
<b>TOTAL FOR MAP NO. 8</b>								<b>0.9</b>		<b>36</b>	<b>45</b>	<b>1.80</b>			<b>110</b>	<b>1,403</b>	<b>350</b>			<b>107</b>		<b>350</b>			<b>400</b>	<b>512</b>	<b>320</b>
<b>TOTAL FOR PROJ NO. 10CR.20131.71</b>								<b>0.9</b>		<b>36</b>	<b>45</b>	<b>1.80</b>			<b>110</b>	<b>1,403</b>	<b>350</b>			<b>107</b>		<b>350</b>			<b>400</b>	<b>512</b>	<b>320</b>
10CR.20131.72	Cabarrus	9	SR 1132 (FLOWES STORE RD)	FROM SR 1147 (FLOWES STORE EAST) TO NC 24/27	7	NO	NO	4.41	23	176	221	8.82			190	5,748	1,100			416		1,765			100	1,280	800
<b>TOTAL FOR MAP NO. 9</b>								<b>4.41</b>		<b>176</b>	<b>221</b>	<b>8.82</b>			<b>190</b>	<b>5,748</b>	<b>1,100</b>			<b>416</b>		<b>1,765</b>			<b>100</b>	<b>1,280</b>	<b>800</b>
<b>TOTAL FOR PROJ NO. 10CR.20131.72</b>								<b>4.41</b>		<b>176</b>	<b>221</b>	<b>8.82</b>			<b>190</b>	<b>5,748</b>	<b>1,100</b>			<b>416</b>		<b>1,765</b>			<b>100</b>	<b>1,280</b>	<b>800</b>
<b>GRAND TOTAL</b>								<b>19.15</b>		<b>621</b>	<b>769</b>	<b>29.62</b>	<b>122,922</b>	<b>1,816</b>	<b>790</b>	<b>19,670</b>	<b>4,110</b>	<b>12,455</b>	<b>400</b>	<b>1,447</b>	<b>773</b>	<b>6,720</b>	<b>5</b>	<b>20</b>	<b>1,820</b>	<b>7,044</b>	<b>4,400</b>

PROJECT NO.	SHEET NO.	TOTAL NO.
10CR.10131.22, 10CR.10131.23 1CR.20131.66, ETC.	7	

### THERMOPLASTIC AND PAINT QUANTITIES

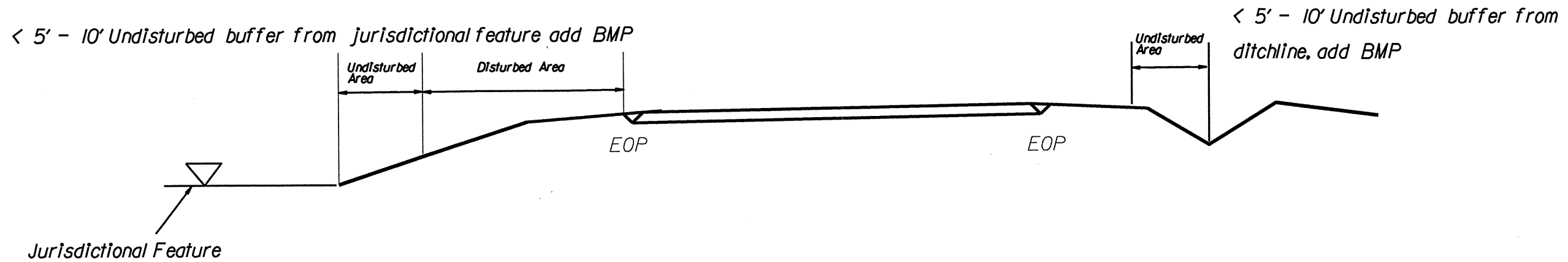
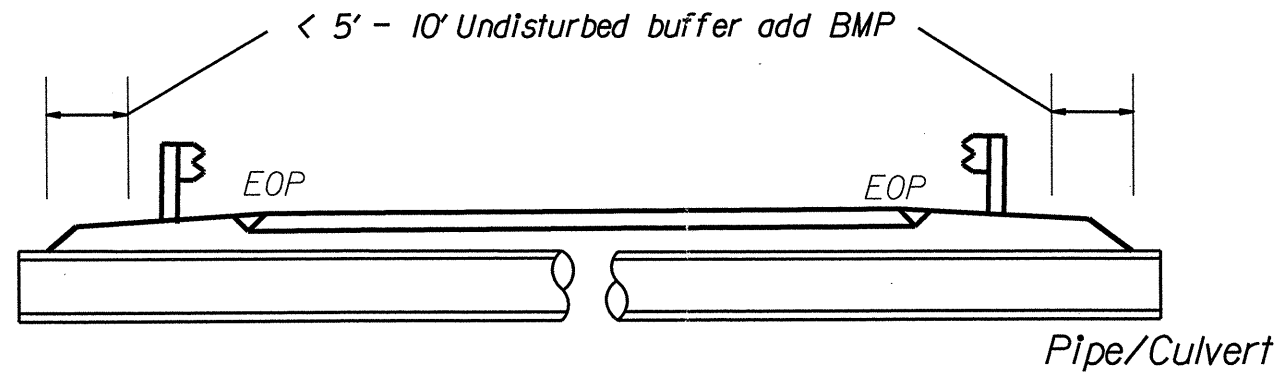
PROJECT NO	COUNTY	MAP NO	ROUTE	DESCRIPTION	LENGTH	WIDTH	4685000000-E		4686000000-E		4695000000-E		4710000000-E		4721000000-E		4725000000-E				4810000000-E	4850000000-E	4875000000-N	4900000000-N		
							4" X 90 M WHITE THERMO	4" X 120 M WHITE THERMO	4" X 120 M YELLOW THERMO	8" X 90 M YELLOW THERMO	24" X 120 M WHITE THERMO	THERMO MSG STOP 120 M	THERMO MSG AHEAD 120 M	THERMO LT ARROW 90 M	THERMO STR ARROW 90 M	THERMO STR & RT ARROW 90 M	THERMO RT ARROW 90 M	4" YELLOW PAINT	REMOVAL OF PAVEMENT MARKING LINES (4")	REMOVAL OF PAVEMENT MARKING SYMBOLS & CHARACTERS	YELLOW & YELLOW MARKERS	CRYSTAL & RED MARKERS				
							LF	LF	LF	LF	LF	EA	EA	EA	EA	EA	EA	EA	EA	EA	EA	EA	EA	EA		
10CR.10131.22	Cabarrus	1	NC 24/27	FROM BEGIN CURB & GUTTER TO END CURB & GUTTER, END OF 5 LANE SECTION	3.81	61	100	11,840	47,400					130			133	6	6		47,400	6,825	105	260	275	
TOTAL FOR MAP NO. 1					3.81		100	11,840	47,400					130			133	6	6		47,400	6,825	105	260	275	
TOTAL FOR PROJ NO. 10CR.10131.22					3.81		100	11,840	47,400					130			133	6	6		47,400	6,825	105	260	275	
							59,240						145								535					
10CR.10131.23	Cabarrus	2	NC 73	FROM SR 2408 (GOLD HILL RD) TO NC 3	1.1	32	7,485	600	11,760	275	60						13	3		3	11,760			65	32	
TOTAL FOR MAP NO. 2					1.1		7,485	600	11,760	275	60						13	3		3	11,760			65	32	
TOTAL FOR PROJ NO. 10CR.10131.23					1.1		7,485	600	11,760	275	60						13	3		3	11,760			65	32	
							12,360						19								97					
1CR.20131.66	Cabarrus	3	SR 1305 (PITTS SCHOOL RD)	FROM ST 1394 (POPLAR TENT RD) TO SR 1431 (WEDDINGTON RD)	1.33	23	13,575	385	11,705	55	90						3			2	11,705					
TOTAL FOR MAP NO. 3					1.33		13,575	385	11,705	55	90						3			2	11,705					
TOTAL FOR PROJ NO. 1CR.20131.66					1.33		13,575	385	11,705	55	90						3			2	11,705					
							12,090						5													
10CR.20131.67	Cabarrus	4	SR 1166 (TOM QUERY RD)	FROM SR 1168 (ROBINSON CH. RD) TO MECKLENBURG COUNTY LINE	1.46	22	14,800	390	16,185	130							6				16,185			96	24	
TOTAL FOR MAP NO. 4					1.46		14,800	390	16,185	130							6				16,185			96	24	
TOTAL FOR PROJ NO. 10CR.20131.67					1.46		14,800	390	16,185	130							6				16,185			96	24	
							16,575						6								120					
10CR.20131.68	Cabarrus	5	SR 1394 (POPLAR TENT RD)	FROM US 29 TO PAVEMENT JOINT BEFORE SR 1430 (GEORGE LILES BLVD)	2.89	23	27,700	1,285	31,135	615	125						19			6	31,135					
TOTAL FOR MAP NO. 5					2.89		27,700	1,285	31,135	615	125						19			6	31,135					
TOTAL FOR PROJ NO. 10CR.20131.68					2.89		27,700	1,285	31,135	615	125						19			6	31,135					
							32,420						25													
10CR.20131.69	Mecklenburg	6	SR 1394 (POPLAR TENT RD)	FROM JOINT AT BRIDGE TO JOINT @ I-85 TIP PROJECT	0.55	32	5,385	275	8,500	270											8,500			36	20	
TOTAL FOR MAP NO. 6					0.55		5,385	275	8,500	270												8,500			36	20
TOTAL FOR PROJ NO. 10CR.20131.69					0.55		5,385	275	8,500	270												8,500			36	20
							8,775						56													
10CR.20131.70	Cabarrus	7	SR 1002 (OLD SALISBURY CONCORD RD)	FROM NC 3 TO PAVEMENT JOINT @ SR 2113 (PENNINGER RD)	2.7	25	27,760	100	23,755								1			2	23,755			178	16	
TOTAL FOR MAP NO. 7					2.7		27,760	100	23,755								1			2	23,755			178	16	
TOTAL FOR PROJ NO. 10CR.20131.70					2.7		27,760	100	23,755								1			2	23,755			178	16	
							23,855						3								194					
10CR.20131.71	Cabarrus	8	SR 1300 (MOREHEAD RD)	FROM PAVEMENT JOINT @ S HUDSEPH RD TO ROCKY RIVER CROSSING SUBDIVISION	0.9	23	10,500	490	9,130	85							3			3	9,130			59	16	
TOTAL FOR MAP NO. 8					0.9		10,500	490	9,130	85							3			3	9,130			59	16	
TOTAL FOR PROJ NO. 10CR.20131.71					0.9		10,500	490	9,130	85							3			3	9,130			59	16	
							9,620						6								75					
10CR.20131.72	Cabarrus	9	SR 1132 (FLOWES STORE RD)	FROM SR 1147 (FLOWES STORE EAST) TO NC 24/27	4.41	23	47,452		37,420		55	8	5								37,420			291		
TOTAL FOR MAP NO. 9					4.41		47,452		37,420		55	8	5									37,420			291	
TOTAL FOR PROJ NO. 10CR.20131.72					4.41		47,452		37,420		55	8	5									37,420			291	
							37,420				13										291					
GRAND TOTAL					19.15		154,757	15,365	196,990	1,430	460	8	5	178	9	6	16				196,990	6,825	105	985	383	
							212,355				13		209								1,368					

NOTES: Less than 5' - 10' undisturbed buffer from ROW, ditchline, water feature, or drainage inlet, add BMP.

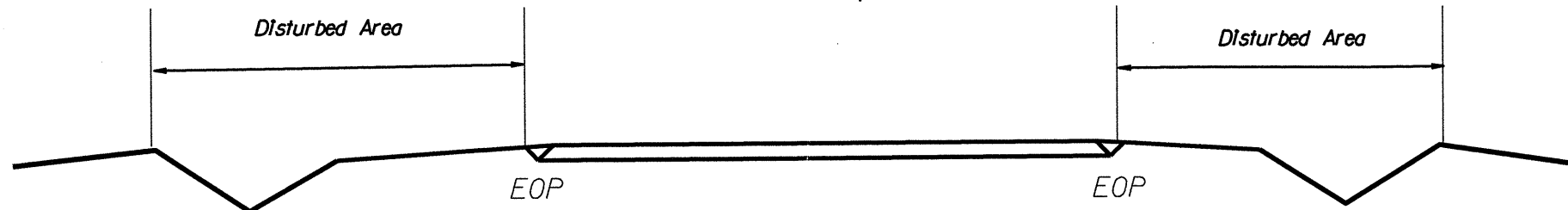
BMP Options: Wattle or Silt Fence

# EROSION CONTROL DETAIL

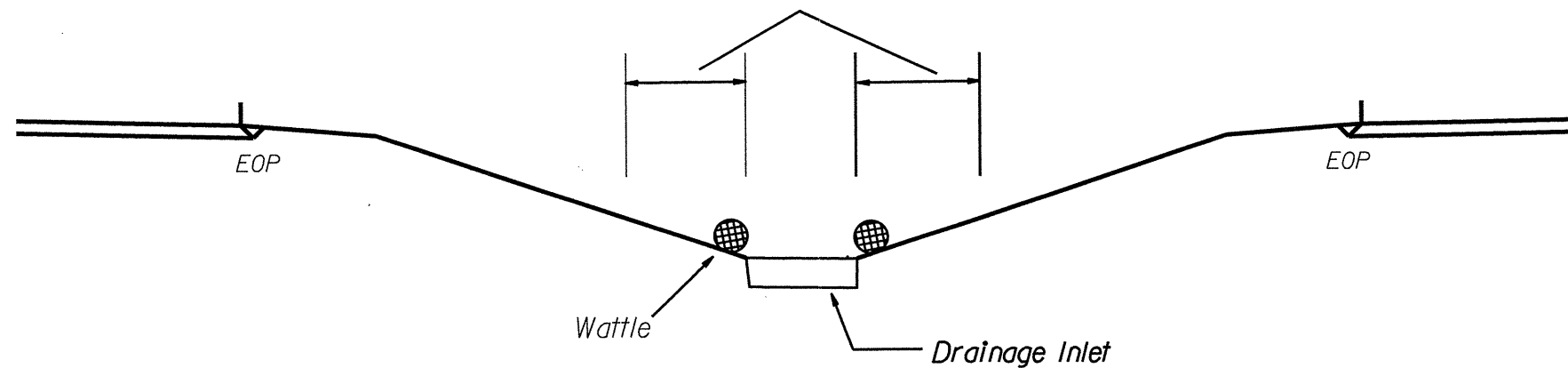
PROJECT REFERENCE NO. <b>DCR103122.ETC</b>	SHEET NO. <b>EC-1</b>
RW SHEET NO.	
ROADWAY DESIGN ENGINEER	HYDRAULICS ENGINEER



Use BMP's if shoulders and/or frontslopes and/or ditchline and/or backslopes are disturbed



< 5' - 10' Undisturbed buffer from inlet, add wattle

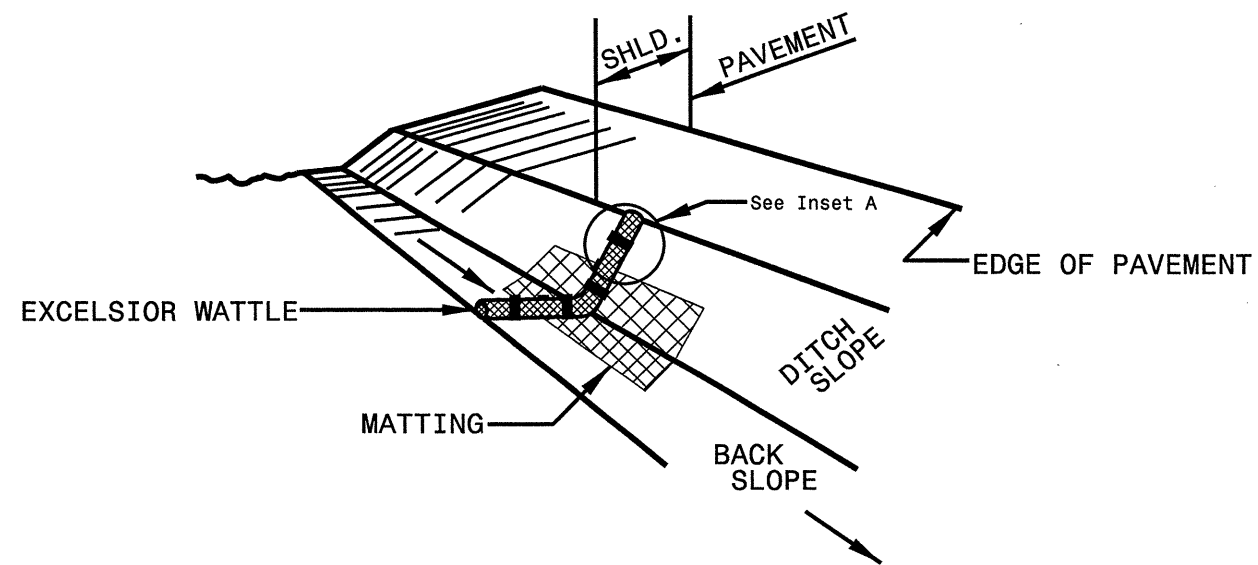


NOT TO SCALE

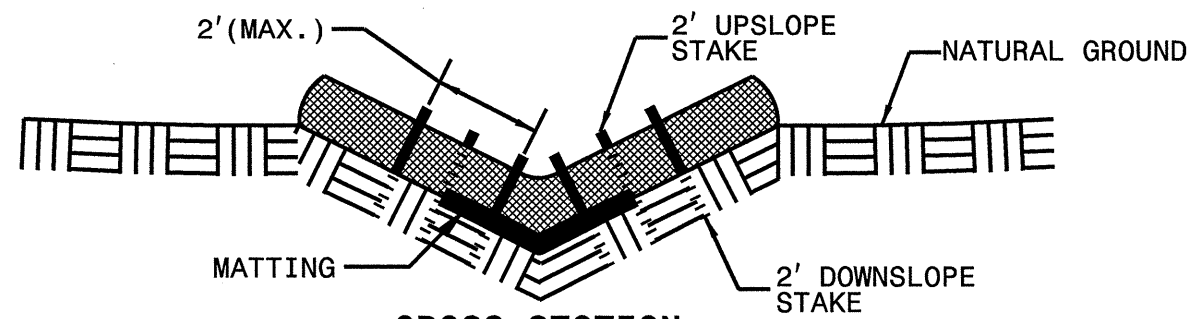


PROJECT REFERENCE NO. <b>10CR1013122.ETC</b>	SHEET NO. <b>EC-2</b>
RAW SHEET NO.	
ROADWAY DESIGN ENGINEER	HYDRAULICS ENGINEER

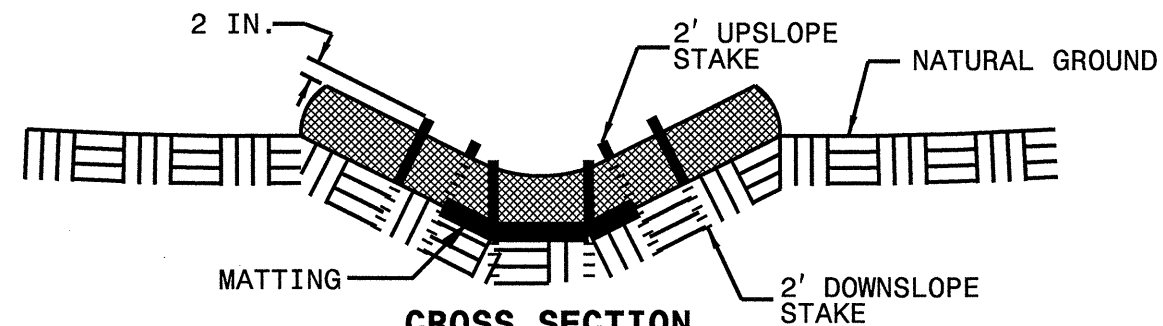
# WATTLE DETAIL



**ISOMETRIC VIEW**



**CROSS SECTION  
VEE DITCH**



**CROSS SECTION  
TRAPEZOIDAL DITCH**

**NOTES:**

USE MINIMUM 12 IN. DIAMETER EXCELSIOR WATTLE.

USE 2 FT. WOODEN STAKES WITH A 2 IN. BY 2 IN. NOMINAL CROSS SECTION.

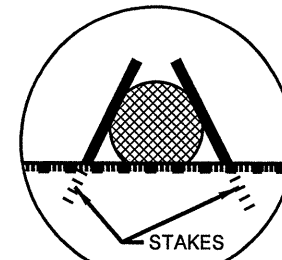
ONLY INSTALL WATTLE(S) TO A HEIGHT IN DITCH SO FLOW WILL NOT WASH AROUND WATTLE AND SCOUR DITCH SLOPES AND AS DIRECTED.

INSTALL A MINIMUM OF 2 UPSLOPE STAKES AND 4 DOWNSLOPE STAKES AT AN ANGLE TO WEDGE WATTLE TO BOTTOM OF DITCH.

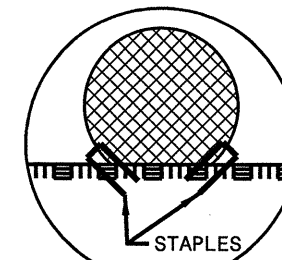
PROVIDE STAPLES MADE OF 0.125 IN. DIAMETER STEEL WIRE FORMED INTO A U SHAPE NOT LESS THAN 12" IN LENGTH.

INSTALL STAPLES APPROXIMATELY EVERY 1 LINEAR FOOT ON BOTH SIDES OF WATTLE AND AT EACH END TO SECURE IT TO THE SOIL.

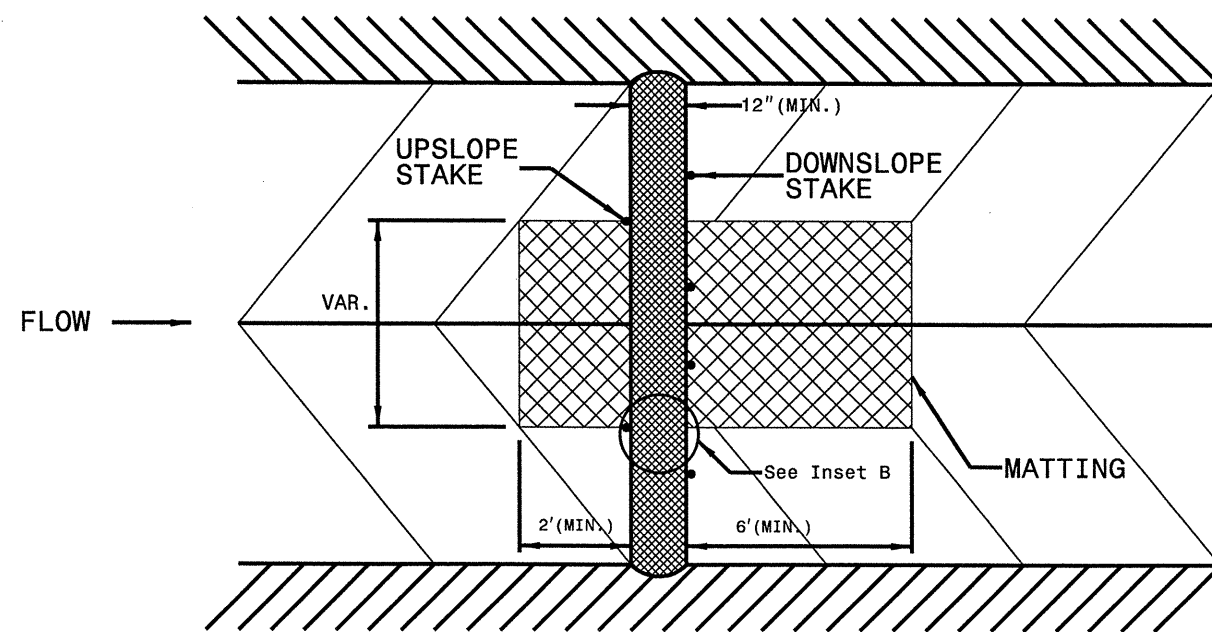
INSTALL MATTING IN ACCORDANCE WITH SECTION 1631 OF THE STANDARD SPECIFICATIONS.



**INSET A**

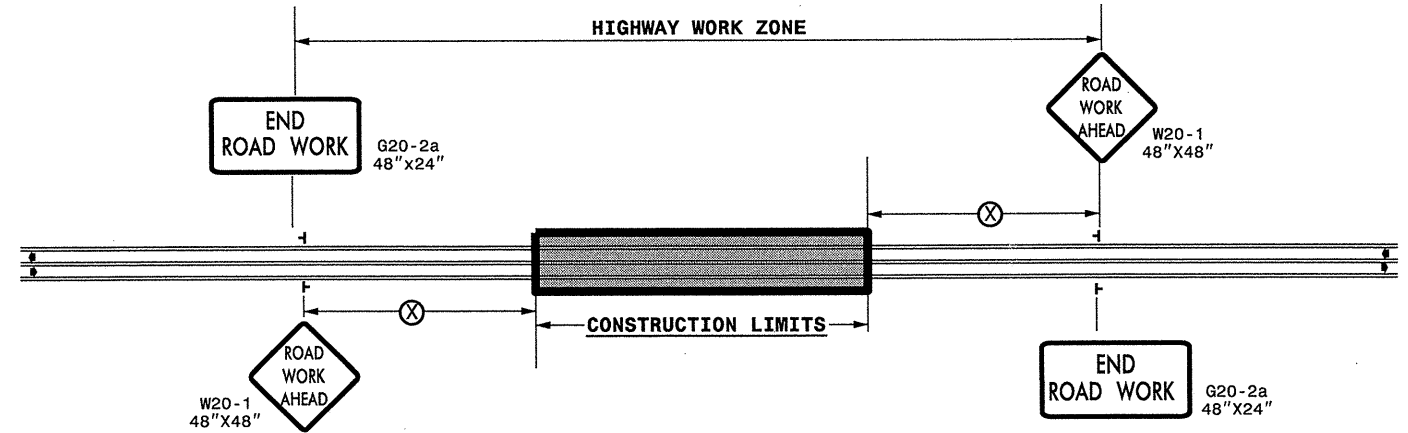


**INSET B**



**TOP VIEW**

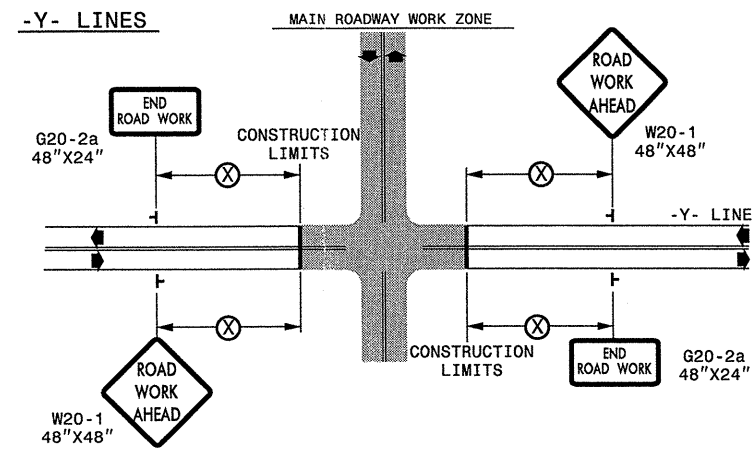
**TWO-WAY UNDIVIDED \*\* (L-LINES)**



POSTED SPEED LIMIT (M.P.H.)	RECOMMENDED MINIMUM SIGN SPACING
≤ 50	500'
≥ 55	1000'

STATE OF NORTH CAROLINA  
DEPT. OF TRANSPORTATION  
DIVISION OF HIGHWAYS  
RALEIGH, N.C.

**ROADWAYS INTERSECTING ALONG 2 WAY UNDIVIDED WORK ZONE (Y-LINES)**



DETAIL DRAWING FOR  
TWO-WAY UNDIVIDED  
WORK ZONE WARNING SIGNS

**GENERAL NOTES**

- USE FLUORESCENT ORANGE SHEETING (TYPE VII OR HIGHER) ON ALL ADVANCED WORK ZONE SIGNS.
- DO NOT INSTALL ADVANCE WARNING SIGNS MORE THAN 3 DAYS PRIOR TO BEGINNING OF WORK.
- SIGNS SHOWN ARE REQUIRED FOR WORK ZONES THAT WILL REMAIN IN EFFECT OVERNIGHT. FOR SHORT-TERM DAILY MAINTENANCE TYPE OPERATIONS, THIS SIGNING APPLICATION IS OPTIONAL; MAY USE ONLY APPLICABLE ROADWAY STANDARD DRAWINGS INSTEAD. HOWEVER, IF THIS SIGNING APPLICATION IS USED, SIGNS MAY BE PORTABLE MOUNTED.
- ALL SIGN SPACING DIMENSIONS ARE APPROXIMATE, FIELD ADJUST AS NECESSARY OR AS DIRECTED.
- USE 3LB STEEL U-CHANNEL POST OR 4" X 4" WOOD POST FOR ALL WORK ZONE SIGNS. 3LB STEEL U-CHANNEL POSTS MUST MEET THE REQUIREMENTS OF STANDARD SPECIFICATION SECTION 1094-1(B), MAY BE GALVANIZED STEEL, OR MAY BE PAINTED GREEN BY THE POST MANUFACTURER. SQUARE STEEL TUBING POSTS HAVING EQUIVALENT STRENGTH OF THE 3 LB STEEL U-CHANNEL POST ARE ALSO ACCEPTABLE FOR USE. ERECT SIGNS PER ROADWAY STANDARD DRAWING 1110.01. PAYMENT FOR WOOD POSTS, 3LB STEEL U-CHANNEL AND SQUARE STEEL TUBING POSTS WITH SIGNS WILL BE MADE ACCORDING TO STANDARD SPECIFICATION "WORK ZONE SIGNS" SECTION 1110.
- WHEN NECESSARY, USE SPLICING IN ACCORDANCE WITH ROADWAY STANDARD DRAWING NO. 1110.01. REMOVE ENTIRE POST WHEN REMOVING SIGNS WITH SPLICED POSTS.
- DO NOT BACK BRACE SIGN SUPPORTS.
- \*\* TWO-WAY UNDIVIDED ADVANCE WARNING SIGN CONFIGURATION MAY BE USED ON URBAN MULTI-LANE FACILITIES WHERE CONDITIONS LIMIT THE USE OF DUAL MOUNTED SIGNS AS DETERMINED BY THE ENGINEER.

**LEGEND**

└ STATIONARY SIGN

◄ DIRECTION OF TRAFFIC FLOW

SHEET 1 OF 1

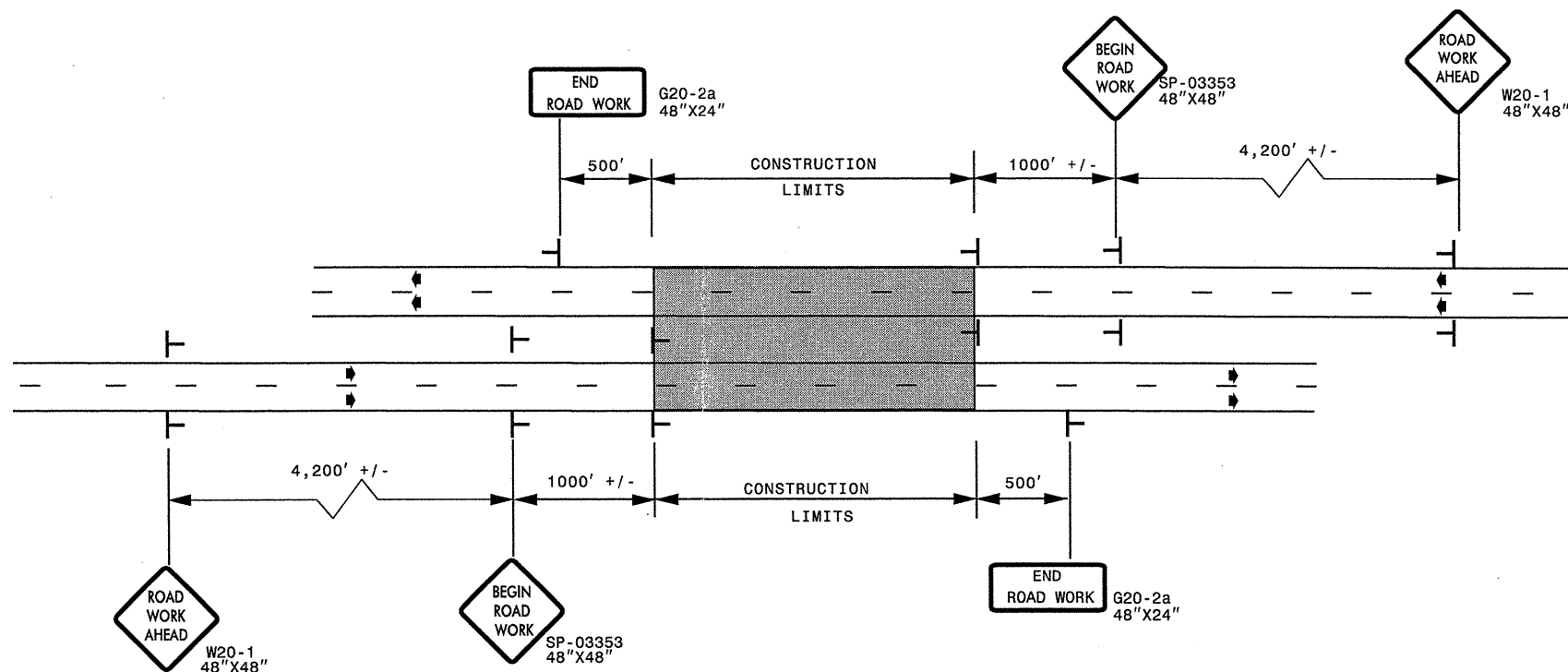
APPROVED: _____ DATE: _____	DETAIL DRAWING FOR TWO-WAY UNDIVIDED AND URBAN FREEWAYS ADVANCED WORK ZONE WARNING SIGNS		SCALE: NONE
			REVISIONS
	DATE: 7-98 10/01	10-98 03/04	01/01 11/04
DWG. BY: _____	DESIGN BY: _____	REVIEWED BY: _____	CADD FILE

I:\MAY-2010\92\DOT\DOT\GROUPS-WZTC\CCC\TMA\WZTC\Resur\Facing\2010\Western\2010\Div10\C2027A-1\10CR.10131.22x9\_Caborr.us\_NC24-27-73(sg)\C2027A-1\10CR.10131.22x9\_2way\_Undiv. & Urban\_Frways\_stationary.dgn  
 sngr.een AT 1E244733

# ADVANCED WORK ZONE WARNING SIGNING FOR FREEWAYS (4 LANES OR GREATER)

PROJ. REFERENCE NO.	SHEET NO.
10CR.10131.22-23 10CR.20131.66-72	TCP-2

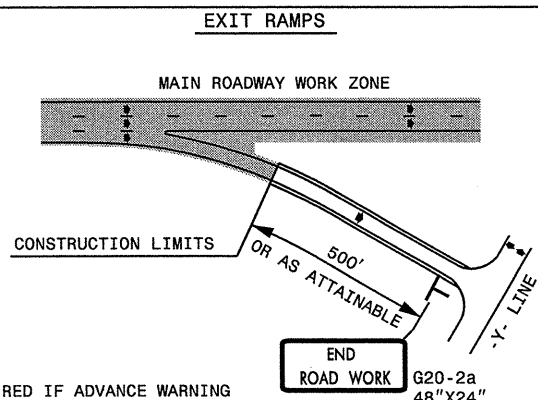
## DETAIL A



LEGEND	
	STATIONARY SIGN
◆	DIRECTION OF TRAFFIC FLOW

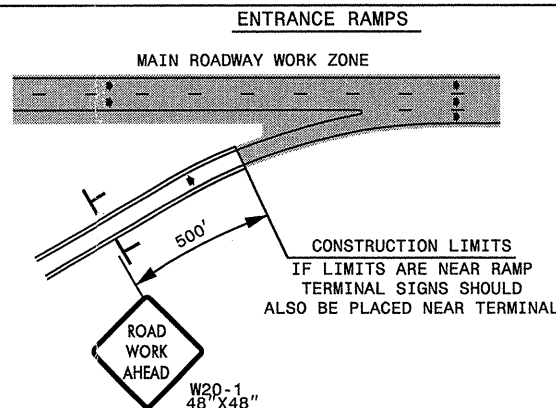
\* USE THE "\$250 SPEEDING PENALTY" SIGN, SPEED LIMIT SIGN, AND ORANGE PANEL; ONLY WHEN A "\$250 SPEEDING PENALTY" ORDINANCE HAS BEEN ISSUED BY THE REGIONAL TRAFFIC ENGINEER.

## DETAIL B



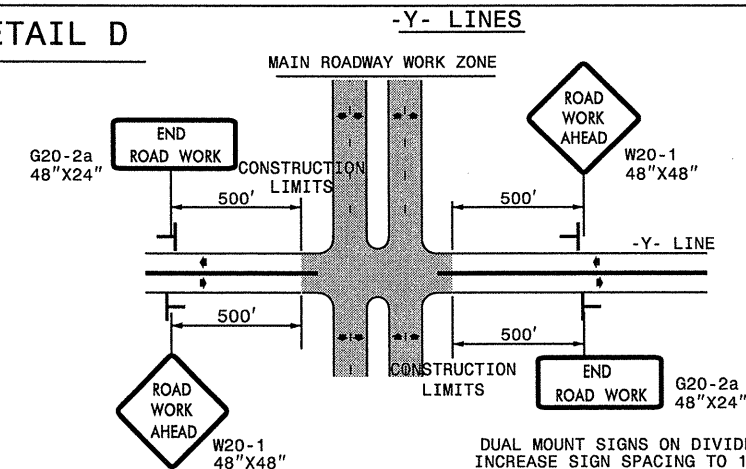
NOTE: SIGN NOT REQUIRED IF ADVANCE WARNING SIGNS HAVE BEEN PLACED ALONG -Y- LINE THAT RAMP INTERSECTS. IF CONSTRUCTION LIMITS ARE AT END OF RAMP, PLACE SIGN AT END OF RAMP.

## DETAIL C



CONSTRUCTION LIMITS  
IF LIMITS ARE NEAR RAMP  
TERMINAL SIGNS SHOULD  
ALSO BE PLACED NEAR TERMINAL

## DETAIL D



DUAL MOUNT SIGNS ON DIVIDED HIGHWAYS AND INCREASE SIGN SPACING TO 1000'+/-.

## GENERAL NOTES

- USE FLUORESCENT ORANGE SHEETING (TYPE VII OR HIGHER) ON ALL ADVANCED WORK ZONE SIGNS.
- DO NOT INSTALL ADVANCE WARNING SIGNS MORE THAN 3 DAYS PRIOR TO BEGINNING OF WORK.
- SIGNS SHOWN ARE REQUIRED FOR WORK ZONES THAT WILL REMAIN IN EFFECT OVERNIGHT. FOR SHORT-TERM DAILY MAINTENANCE TYPE OPERATIONS, THIS SIGNING APPLICATION IS OPTIONAL; MAY USE ONLY APPLICABLE ROADWAY STANDARD DRAWINGS INSTEAD. HOWEVER, IF THIS SIGNING APPLICATION IS USED, SIGNS MAY BE PORTABLE MOUNTED.
- ALL SIGN SPACING DIMENSIONS ARE APPROXIMATE, FIELD ADJUST AS NECESSARY OR AS DIRECTED.
- USE 3LB STEEL U-CHANNEL POST OR 4" X 4" WOOD POST FOR ALL WORK ZONE SIGNS. 3LB STEEL U-CHANNEL POSTS MUST MEET THE REQUIREMENTS OF STANDARD SPECIFICATION SECTION 1094-1(B), MAY BE GALVANIZED STEEL, OR MAY BE PAINTED GREEN BY THE POST MANUFACTURER. SQUARE STEEL TUBING POSTS HAVING EQUIVALENT STRENGTH OF THE 3 LB STEEL U-CHANNEL POST ARE ALSO ACCEPTABLE FOR USE. ERECT SIGNS PER ROADWAY STANDARD DRAWING 1110.01. PAYMENT FOR WOOD POSTS, 3LB STEEL U-CHANNEL AND SQUARE STEEL TUBING POSTS WITH SIGNS WILL BE MADE ACCORDING TO STANDARD SPECIFICATION "WORK ZONE SIGNS" SECTION 1110.
- WHEN NECESSARY, USE SPLICING IN ACCORDANCE WITH ROADWAY STANDARD DRAWING NO. 1110.01. REMOVE ENTIRE POST WHEN REMOVING SIGNS WITH SPLICED POSTS.
- DO NOT BACK BRACE SIGN SUPPORTS.

APPROVED: _____ DATE: _____	ADVANCED WORK ZONE WARNING SIGNS FOR FREEWAYS (4 LANES OR GREATER)	
SEAL	SCALE: NONE	REVISIONS
	DATE: 8/03	03/04
	DWG. BY: JI	DESIGN BY: JI
	REVIEWED BY:	CARD FILE

16-MAY-2010 09:20 \\DOT\DFS\DOT\GROUPS-WZTCCC\T.M.U\WZTC\Resur\facng\2010\Western\2010\Div10\C2027A-1\DCR\10131.22x9\_Coborr.us\_NC24-27-T3(eg)\C2027A-1\DCR\10131.22x9\_freeways\_4lanes\_or\_greater\_stationary.dgn AT TE244733