



FINAL PAVEMENT MARKING SCHEDULE

| SYMBOL | DESCRIPTION | QUANTITY BREAKDOWN | PAY ITEM | TOTAL QUANTITY | SYMBOL | DESCRIPTION | QUANTITY BREAKDOWN | PAY ITEM | TOTAL QUANTITY |
|------------------------|-----------------------|-----------------------|------------------------------|-------------------|------------------------|--------------------------|-----------------------|-----------------------------------|-------------------|
| PAVEMENT MARKING LINES | | | | | PAVEMENT MARKING LINES | | | | |
| TA | WHITE EDGELINE | 4,772 m | THERMOPLASTIC (100MM, 2.3MM) | 9,638 m | P6 | WHITE EDGELINE (2X) | 1,750 m | PAINT (150MM) | 4,253 m |
| TB | YELLOW EDGELINE | 4,866 m | | | TOTAL | P7 | YELLOW EDGELINE (2X) | | |
| TC | 3M WHITE SKIP | 2,005 m | THERMOPLASTIC (100MM, 3.1MM) | 2,478 m | PK | 3M WHITE SKIP (2X) | 205 m | PAINT (200MM) | 968 m |
| TD | 0.5M WHITE MINISKIP | 45 m | | | TOTAL | PV | YELLOW DIAGONAL (2X) | | |
| TE | WHITE SOLID LANE LINE | 428 m | THERMOPLASTIC (150MM, 2.3MM) | 6,310 m | P1 | WHITE GORELINE (2X) | 100 m | PAINT (300MM) | 100 m |
| TJ | 3 M. WHITE SKIP | 599 m | | | TOTAL | PAVEMENT MARKING SYMBOLS | | | |
| TK | 0.5 M. WHITE MINISKIP | 98 m | THERMOPLASTIC (150MM, 3.1MM) | 697 m | QA | LEFT TURN ARROW (2X) | 4 ea | PAINT | 15 ea |
| TP | WHITE GORELINE | 1,833 m | | | TOTAL | QC | RIGHT TURN ARROW (2X) | | |
| TY | WHITE GORELINE | 751 m | THERMOPLASTIC (200MM, 2.3MM) | 1,833 m | QC | STRAIGHT ARROW (2X) | 9 ea | THERMOPLASTIC SYMBOL (90 Mls) | 13 ea |
| VA | WHITE EDGELINE | 82 m | | | TOTAL | UB | RIGHT TURN ARROW | | |
| VB | WHITE EDGELINE | 82 m | THERMOPLASTIC (300MM, 2.3MM) | 751 m | UC | STRAIGHT ARROW | 9 ea | THERMOPLASTIC CHARACTER (120 Mls) | 8 ea |
| VC | 3M WHITE SKIP | 37 m | | | TOTAL | PAVEMENT MARKERS | | | |
| V6 | WHITE EDGELINE | 843 m | POLYUREA (100MM, 20 Mls) | 201 m | MB | CRYSTAL AND RED | 108 ea | PERMANENT RAISED | 108 ea |
| V7 | YELLOW EDGELINE | 843 m | | | TOTAL | MF | CRYSTAL AND RED | | |
| VJ | 3M WHITE SKIP | 116 m | POLYUREA (150MM, 20 Mls) | 1,814 m | SNOWPLOWABLE RAISED | | | | |
| VK | 0.5M WHITE MINISKIP | 12 m | | | TOTAL | TOTAL | | | |
| VP | WHITE GORELINE | 14 m | POLYUREA (200MM, 20 Mls) | 14 m | TOTAL | | | | |
| VY | WHITE GORELINE | 210 m | | | TOTAL | TOTAL | | | |
| TOTAL | | | | | TOTAL | | | | |

SEE ROADWAY STANDARD DRAWING NUMBERS 1205.01, 1205.02, 1205.03, 1205.06, 1205.08, 1250.01, 1251.01, 1253.01, 1267.01, 1267.02 AND 1267.03

2/11/2011 2:41:00 PM C:\Users\jg\Documents\2519DA\TC_pmp\dgn

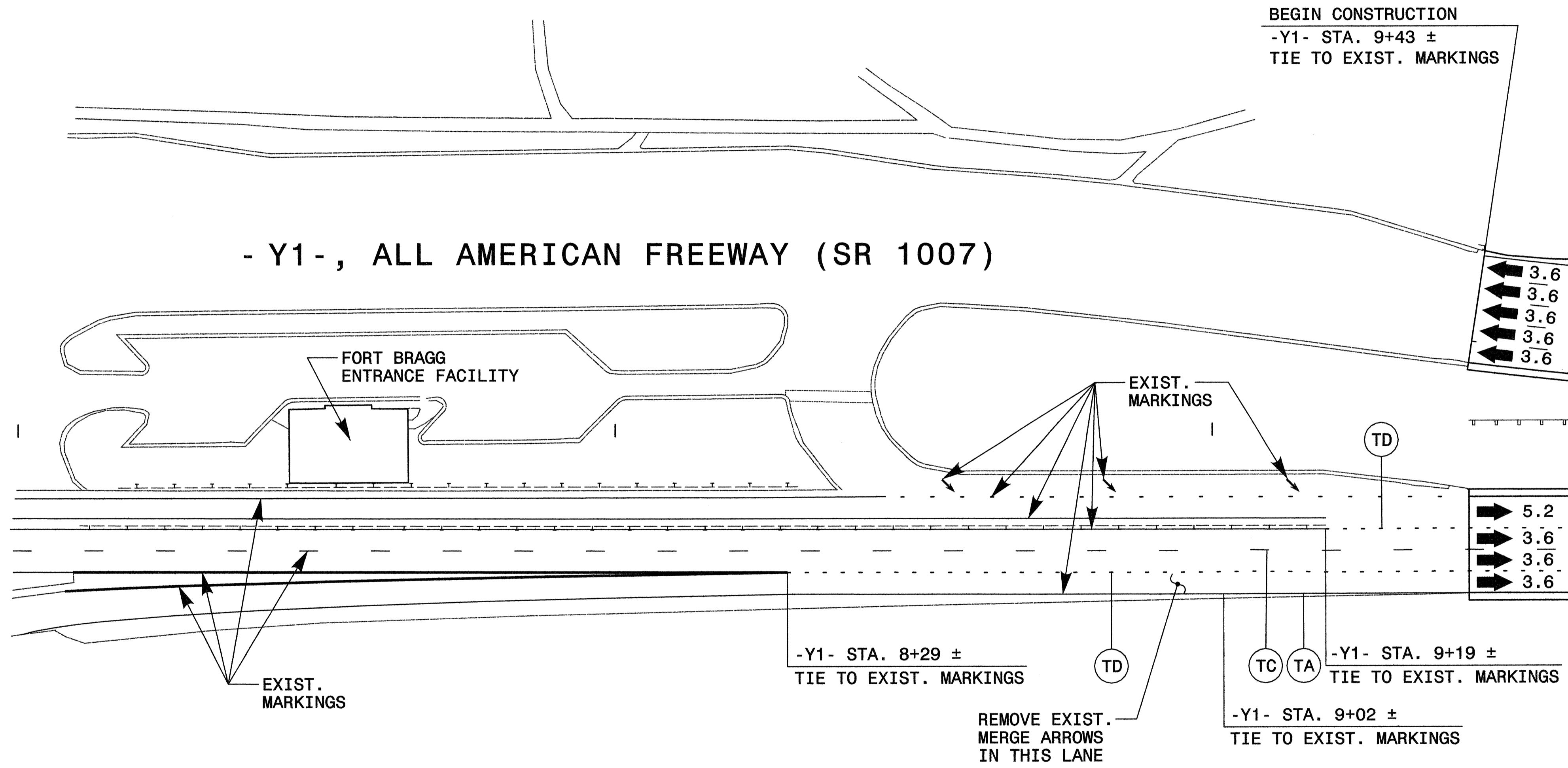
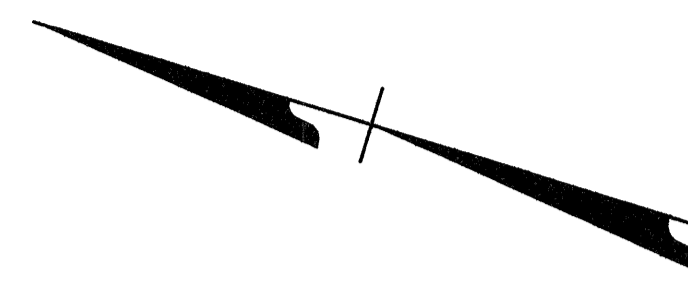
| APPROVED: <i>Michael T. Ripman</i> DATE: 2-11-11 | FINAL PAVEMENT MARKING SCHEDULE | | | | | | | | |
|---|--|-----------|--|--|--|--|--|---|-----------|
| | SCALE: NONE | | | | | | | | |
| | DATE: 2-11 | | | | | | | | |
| | DESIGN BY: GEP | | | | | | | | |
| | REVIEWED BY: MTR | | | | | | | | |
| <table border="1"> <thead> <tr> <th colspan="2">REVISIONS</th> </tr> </thead> <tbody> <tr> <td> </td> <td> </td> </tr> <tr> <td> </td> <td> </td> </tr> </tbody> </table> | | REVISIONS | | | | | | <table border="1"> <tr> <td>CADD FILE</td> </tr> </table> | CADD FILE |
| REVISIONS | | | | | | | | | |
| | | | | | | | | | |
| | | | | | | | | | |
| CADD FILE | | | | | | | | | |



7+00

8+00

9+00



- Y1 -, ALL AMERICAN FREEWAY (SR 1007)

EXISTING PAVEMENT MARKINGS SHOWN ARE APPROXIMATE AND NEED TO BE FIELD VERIFIED. EXISTING PAVEMENT MARKINGS OFF PROJECT LIMIT MAY REQUIRE ADJUSTMENT AS DIRECTED BY ENGINEER.

- NOTES:
- SEE SHEET PM-1, FOR FINAL PAVEMENT MARKING SCHEDULE.
 - PAVEMENT MARKINGS ARE TO BE MARKED ACCORDING TO ROADWAY STANDARD DRAWINGS UNLESS OTHERWISE NOTED IN THE PLANS.
 - PAVEMENT MARKERS ARE TO BE SPACED ACCORDING TO THE ROADWAY STANDARD DRAWINGS.

| | | |
|--|------------------------------------|-----------|
| APPROVED: <i>Michael T. Rzepka</i> DATE: 7-12-07 | FINAL PAVEMENT MARKING PLAN | |
| | | |
| SCALE: NONE | | REVISIONS |
| DATE: 7-08 | | |
| DWG. BY: BLM | | |
| DESIGN BY: BLM | | |
| REVIEWED BY: MTR | | CARD FILE |

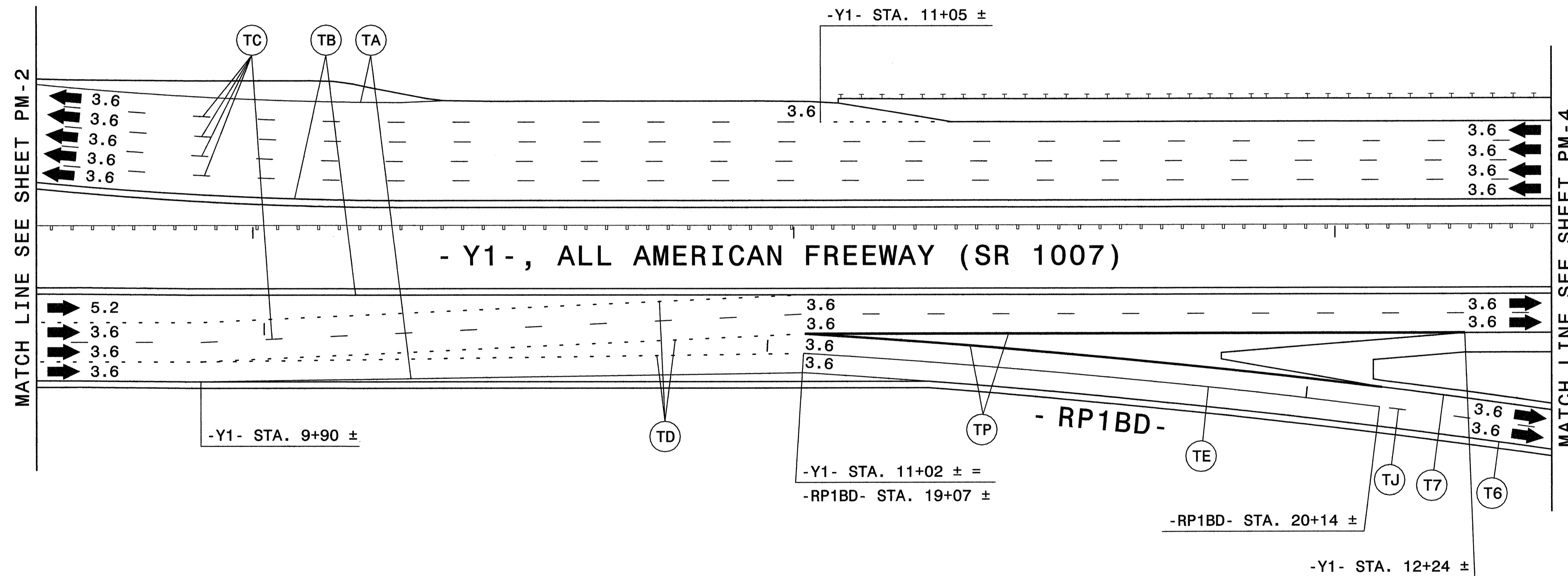
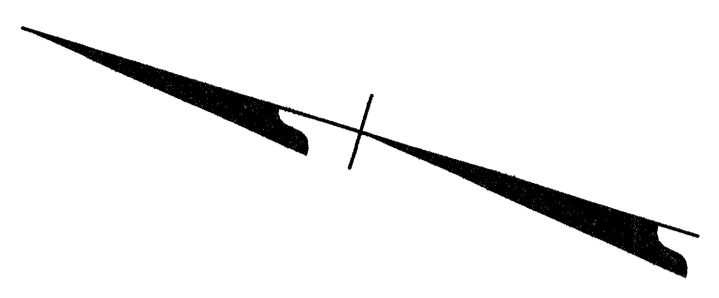
07/24/2008
 R:\1607\U-2519DA_TC.pmp2.dgn
 Ko & Associates, P.C.



10+00

11+00

12+00



- NOTES:**
- SEE SHEET PM-1, FOR FINAL PAVEMENT MARKING SCHEDULE.
 - PAVEMENT MARKINGS ARE TO BE MARKED ACCORDING TO ROADWAY STANDARD DRAWINGS UNLESS OTHERWISE NOTED IN THE PLANS.
 - PAVEMENT MARKERS ARE TO BE SPACED ACCORDING TO THE ROADWAY STANDARD DRAWINGS.

| | | |
|---|------------------------------------|--|
| APPROVED: <i>Michael Rzepka</i> DATE: 7-22-08 | FINAL PAVEMENT MARKING PLAN | |
| | SCALE: NONE | |
| | DATE: 7-08 | |
| | DWG. BY: BLM | |
| | DESIGN BY: BLM | |
| REVIEWED BY: MTR | REVISIONS | |



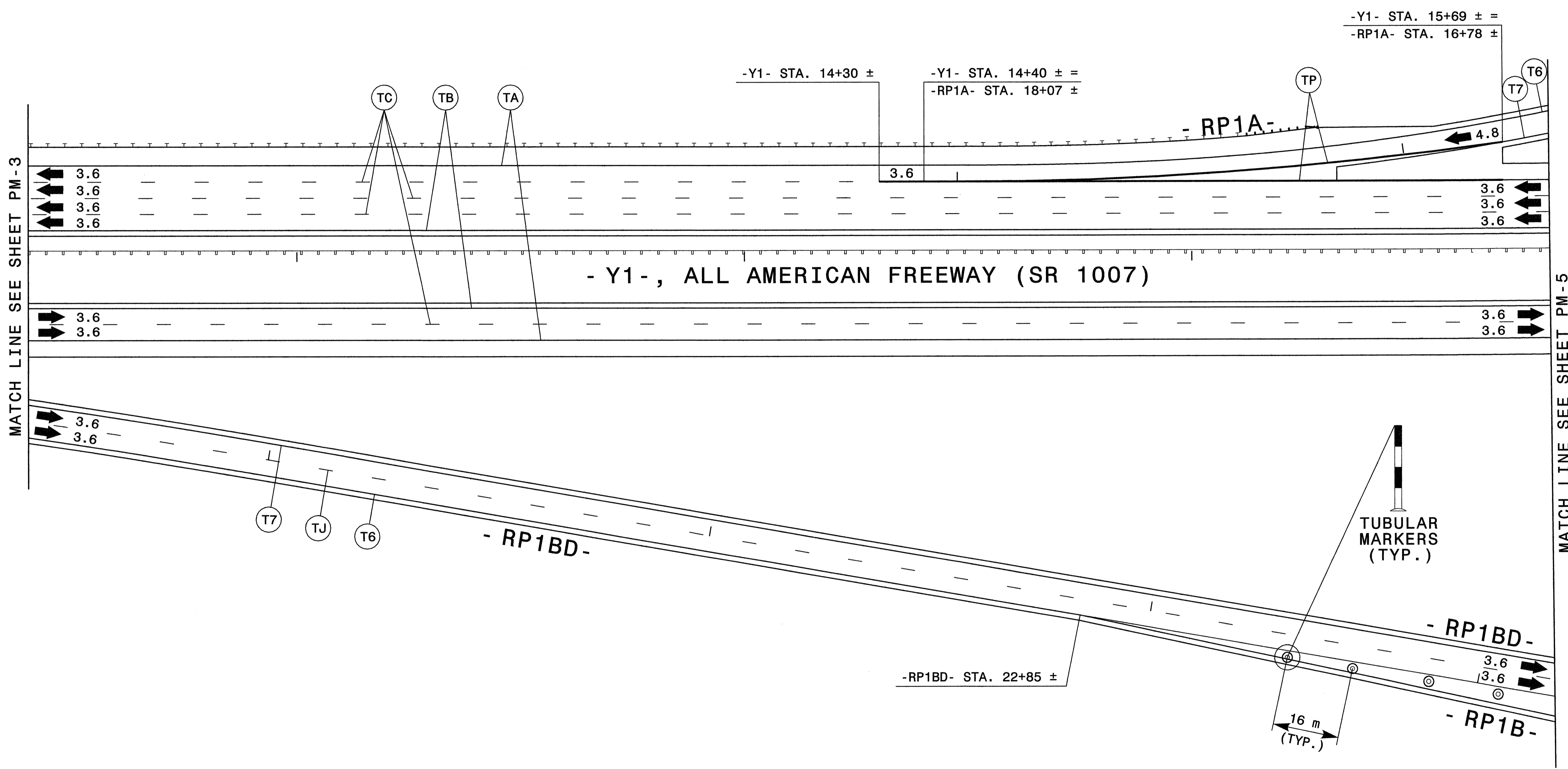
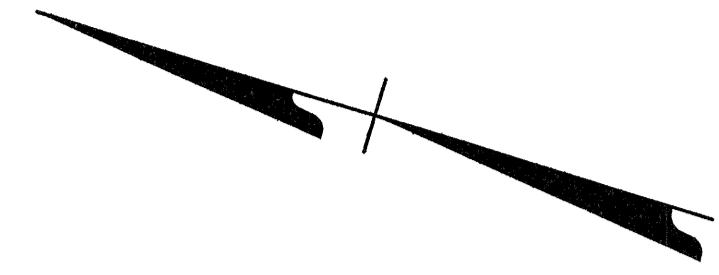
KO & ASSOCIATES, P.C.
 Consulting Engineers
 5121 KINGDOM WAY, SUITE 100 RALEIGH, N.C. 27607
 (919) 851-0966

| | |
|---------------------|-----------|
| PROJ. REFERENCE NO. | SHEET NO. |
| U-2519DA | PM-4 |

13+00

14+00

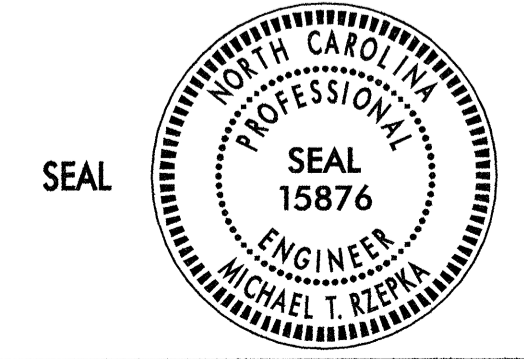
15+00



NOTES:

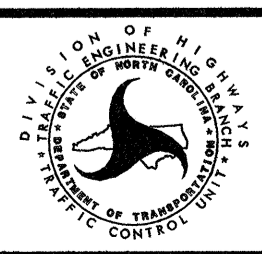
- SEE SHEET PM-1, FOR FINAL PAVEMENT MARKING SCHEDULE.
- PAVEMENT MARKINGS ARE TO BE MARKED ACCORDING TO ROADWAY STANDARD DRAWINGS UNLESS OTHERWISE NOTED IN THE PLANS.
- PAVEMENT MARKERS ARE TO BE SPACED ACCORDING TO THE ROADWAY STANDARD DRAWINGS.

APPROVED: *Michael Rzepka* DATE: 7-22-08



FINAL PAVEMENT MARKING PLAN

SCALE: NONE
 DATE: 7-08
 DWG. BY: BLM
 DESIGN BY: BLM
 REVIEWED BY: MTR



| REVISIONS |
|-----------|
| |
| |
| |

07/21/2008
 R:\007\U-2519DA_TC_pmp4.dgn
 Ko & Associates, P.C.



KO & ASSOCIATES, P.C.
 Consulting Engineers
 5121 KINGDOM WAY, SUITE 100 RALEIGH, N.C. 27607
 (919) 881-6966

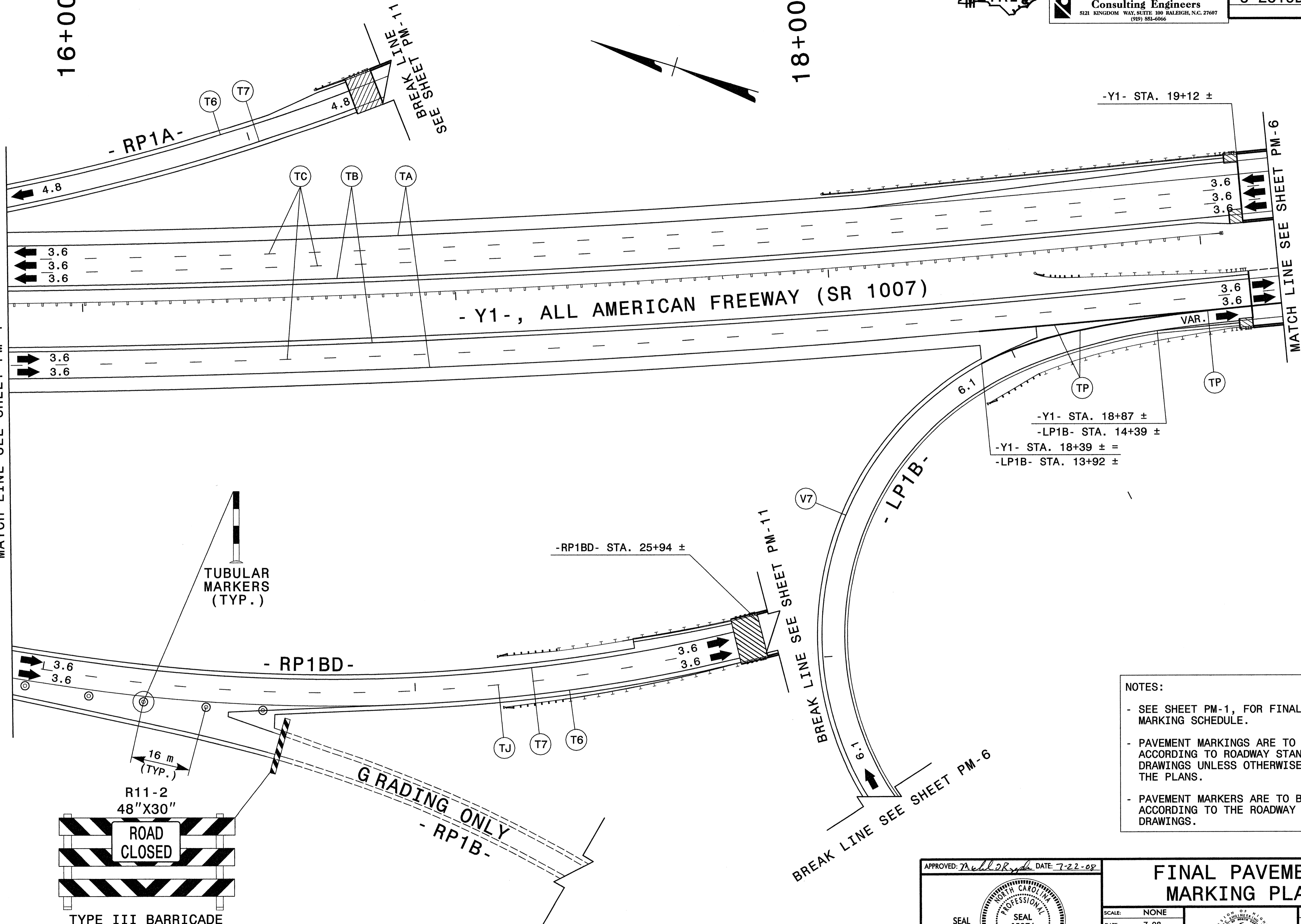
| | |
|---------------------|-----------|
| PROJ. REFERENCE NO. | SHEET NO. |
| U-2519DA | PM-5 |

16+00

18+00

MATCH LINE SEE SHEET PM-4

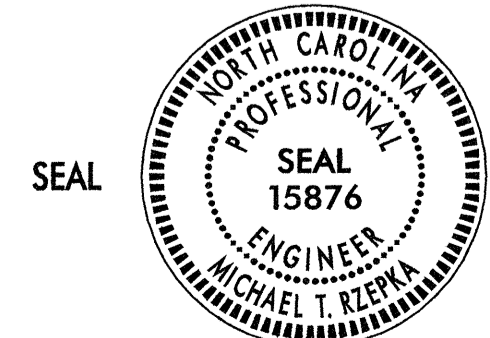
MATCH LINE SEE SHEET PM-6



NOTES:

- SEE SHEET PM-1, FOR FINAL PAVEMENT MARKING SCHEDULE.
- PAVEMENT MARKINGS ARE TO BE MARKED ACCORDING TO ROADWAY STANDARD DRAWINGS UNLESS OTHERWISE NOTED IN THE PLANS.
- PAVEMENT MARKERS ARE TO BE SPACED ACCORDING TO THE ROADWAY STANDARD DRAWINGS.

APPROVED: *[Signature]* DATE: 7-22-08



FINAL PAVEMENT MARKING PLAN

| SCALE: | NONE | | <table border="1"> <tr> <th colspan="2">REVISIONS</th> </tr> <tr> <td> </td> <td> </td> </tr> <tr> <td> </td> <td> </td> </tr> <tr> <td> </td> <td> </td> </tr> <tr> <td> </td> <td> </td> </tr> </table> | REVISIONS | | | | | | | | | |
|--------------|------|--|---|-----------|--|--|--|--|--|--|--|--|--|
| REVISIONS | | | | | | | | | | | | | |
| | | | | | | | | | | | | | |
| | | | | | | | | | | | | | |
| | | | | | | | | | | | | | |
| | | | | | | | | | | | | | |
| DATE: | 7-08 | | | | | | | | | | | | |
| DWG. BY: | BLM | | | | | | | | | | | | |
| DESIGN BY: | BLM | | | | | | | | | | | | |
| REVIEWED BY: | MTR | | | | | | | | | | | | |

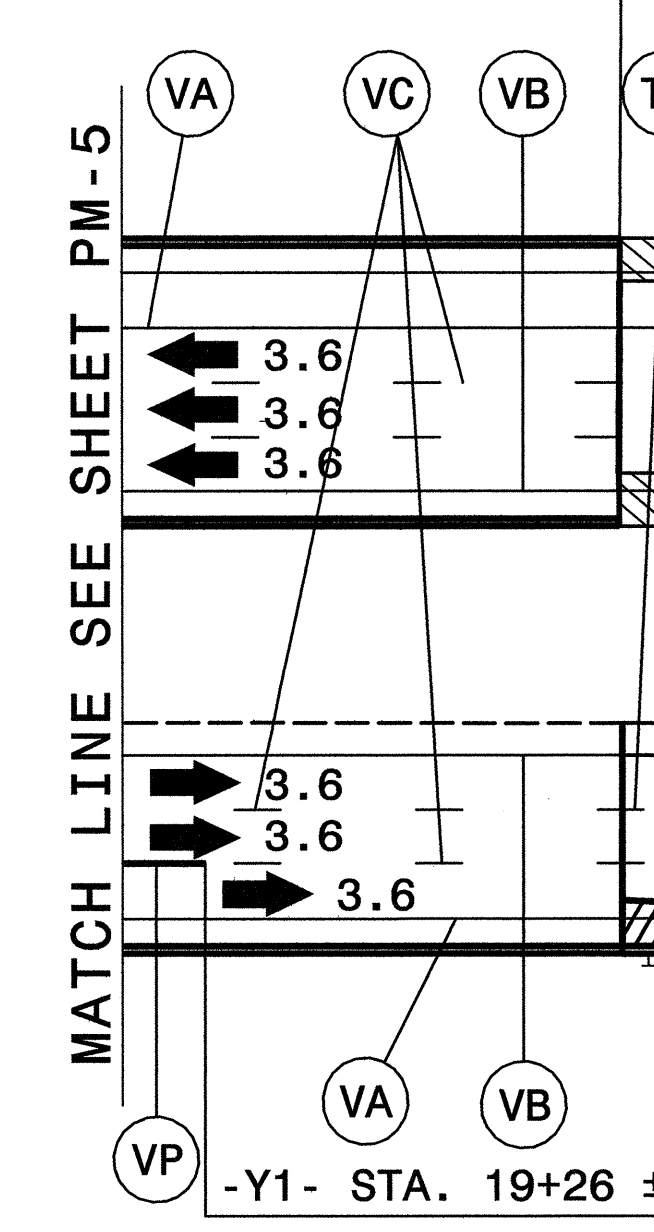
07/21/2008
 R:\1607\U-2519DA-TC.pmp5.dgn
 KO & Associates, P.C.



Florence & Hutcheson
 CONSULTING ENGINEERS
 5121 Kingsley Way, Suite 100 Raleigh, NC 27607
 NC License No. P-0288

| | |
|---------------------|-----------|
| PROJ. REFERENCE NO. | SHEET NO. |
| U-2519DA | PM-6 |

29+00
 -Y1- STA. 19+53 ±



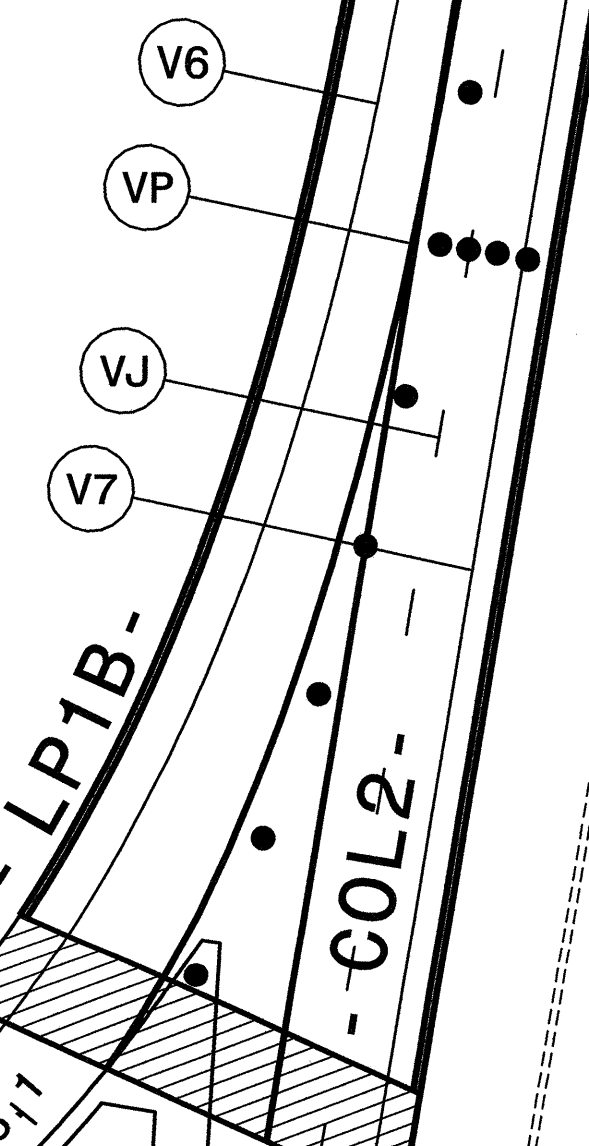
MATCH LINE SEE SHEET PM-11

21+00

22+00
 SEE BREAK LINE SHEET PM-10

28+00

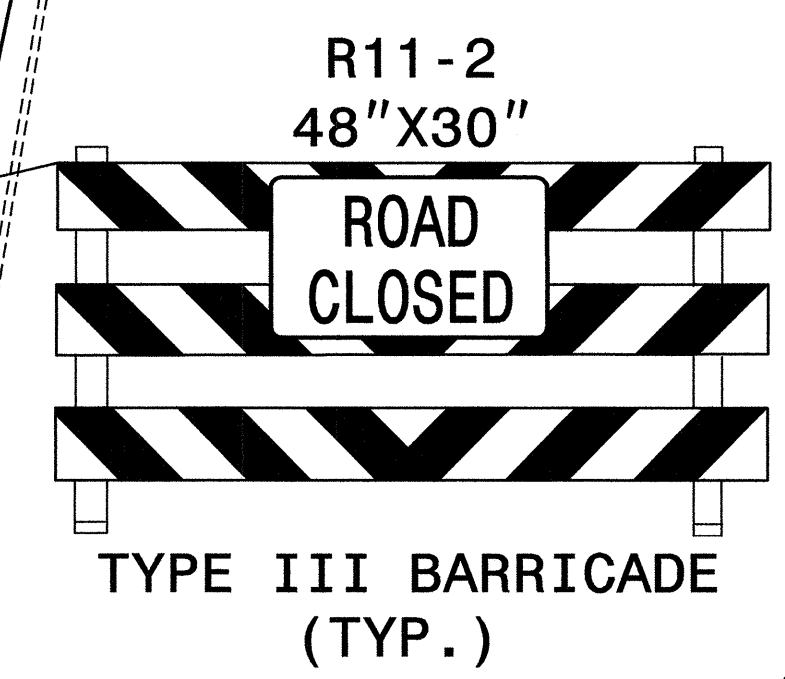
-COL2- STA. 28+07 ± =
 -LP1B- STA. 10+00 ±



- L -, FAYETTEVILLE OUTER LOOP

- COL1 -

-Y1- STA. 20+18 ±



- Y1 -, ALL AMERICAN FREEWAY (SR 1007)

- RP1D -

BREAK LINE
 SEE SHEET PM-5

- NOTES:
- SEE SHEET PM-1, FOR FINAL PAVEMENT MARKING SCHEDULE.
 - PAVEMENT MARKINGS AND SYMBOLS ARE TO BE MARKED ACCORDING TO ROADWAY STANDARD DRAWINGS UNLESS OTHERWISE NOTED IN THE PLANS.
 - PAVEMENT MARKERS ARE TO BE SPACED ACCORDING TO THE ROADWAY STANDARD DRAWINGS.

APPROVED: *Michael T. Rzepa* DATE: 2-11-11

SEAL

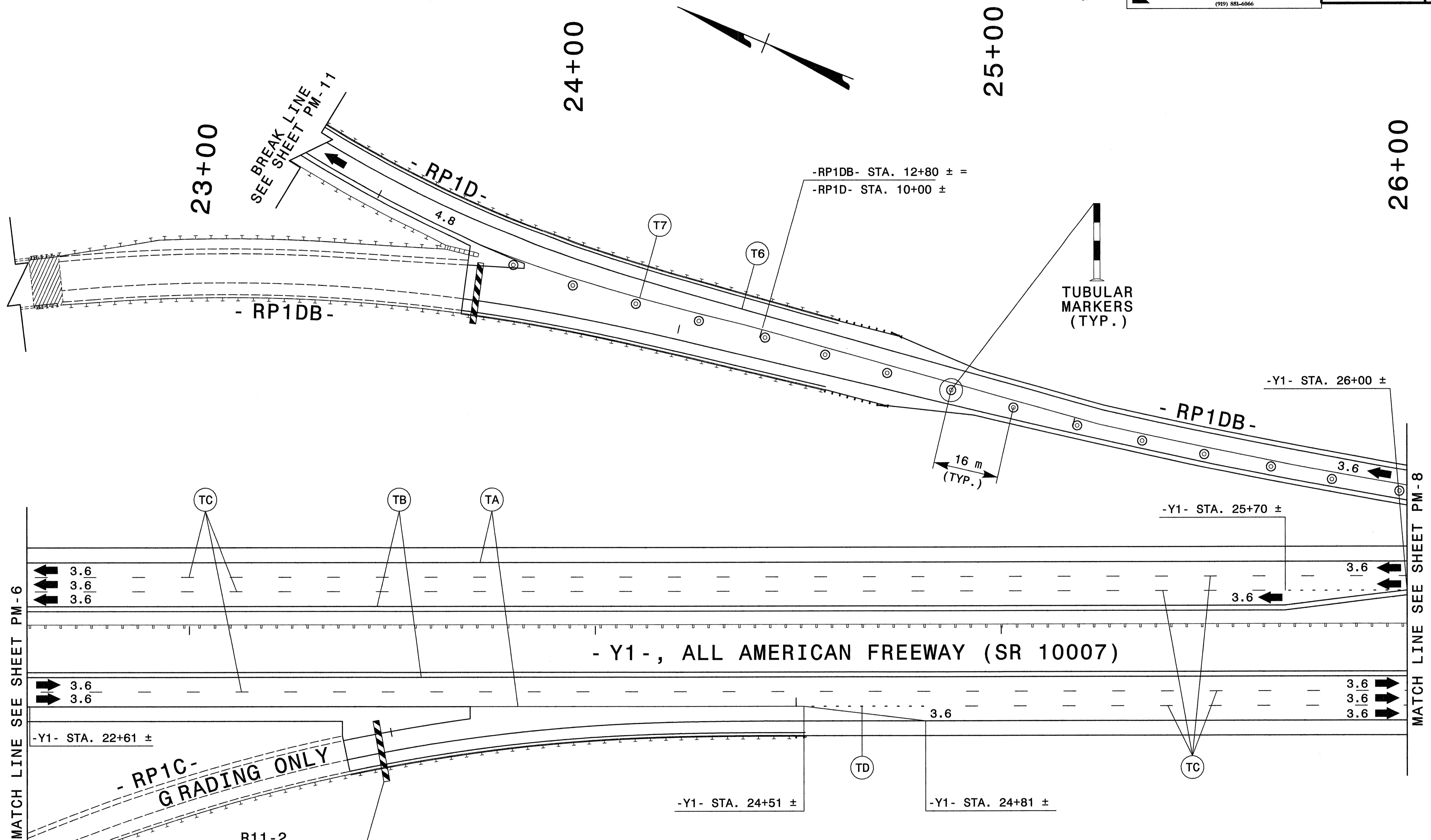
| | | | |
|------------------|--|-----------|--|
| SCALE: NONE | | REVISIONS | |
| | | | |
| DWG. BY: GEP | | FILE | |
| DESIGN BY: GEP | | | |
| REVIEWED BY: MTR | | | |

2/11/2011
 P:\Projects\U-2519DA\100% rev feb 2011\U-2519DA_TC.pmp6.dgn
 Ko & Associates, P.C.



KO & ASSOCIATES, P.C.
 Consulting Engineers
 5121 KINGDOM WAY, SUITE 100 RALEIGH, N.C. 27607
 (919) 881-6666

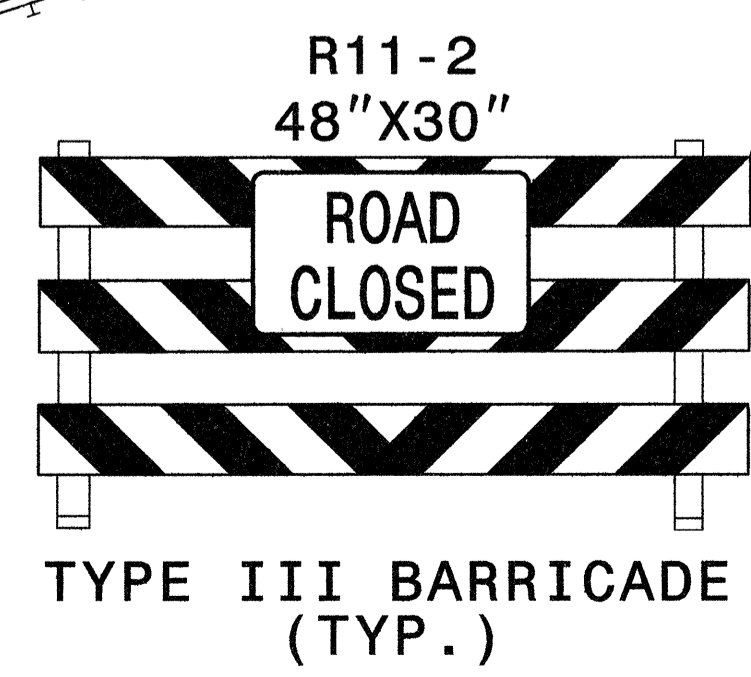
| | |
|---------------------|-----------|
| PROJ. REFERENCE NO. | SHEET NO. |
| U-2519DA | PM-7 |



MATCH LINE SEE SHEET PM-6

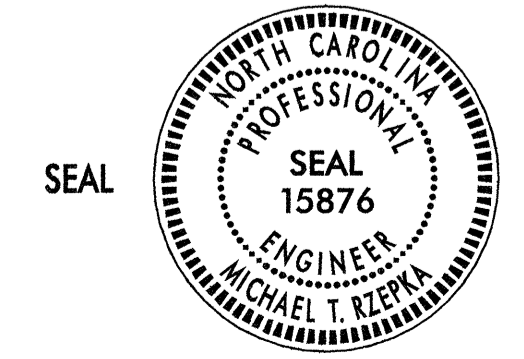
MATCH LINE SEE SHEET PM-8

- Y1 -, ALL AMERICAN FREEWAY (SR 10007)



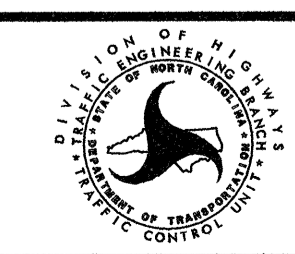
- NOTES:
- SEE SHEET PM-1, FOR FINAL PAVEMENT MARKING SCHEDULE.
 - PAVEMENT MARKINGS ARE TO BE MARKED ACCORDING TO ROADWAY STANDARD DRAWINGS UNLESS OTHERWISE NOTED IN THE PLANS.
 - PAVEMENT MARKERS ARE TO BE SPACED ACCORDING TO THE ROADWAY STANDARD DRAWINGS.

APPROVED: *Michael T. Rzepka* DATE: 7-22-08



FINAL PVAEMENT MARKING PLAN

SCALE: NONE
 DATE: 7-08
 DWG. BY: BLM
 DESIGN BY: BLM
 REVIEWED BY: MTR



| REVISIONS |
|-----------|
| |
| |
| |

07/21/2008
 R:\1607\U-2519DA_TC.pmp7.dgn
 Ko & Associates, P.C.



KO & ASSOCIATES, P.C.
 Consulting Engineers
 5121 KINGDOM WAY, SUITE 100 RALEIGH, N.C. 27607
 (919) 581-6066

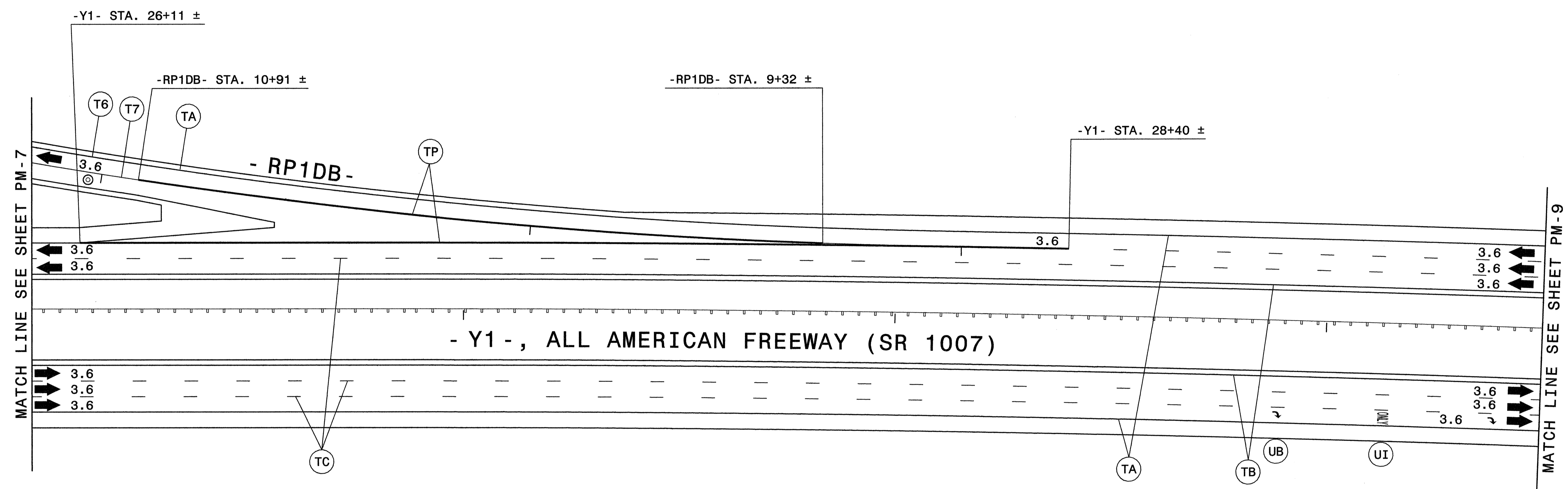
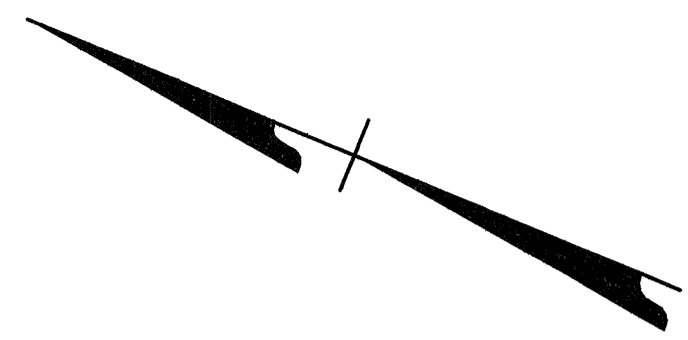
| | |
|---------------------|-----------|
| PROJ. REFERENCE NO. | SHEET NO. |
| U-2519DA | PM-8 |

26+00

27+00

28+00

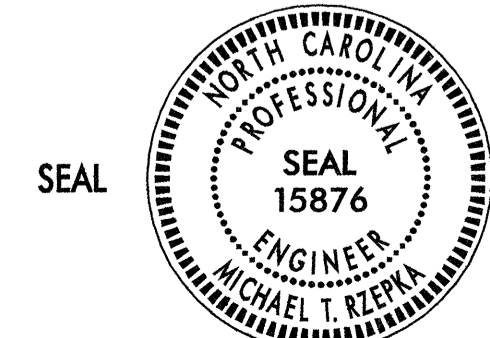
29+00



NOTES:

- SEE SHEET PM-1, FOR FINAL PAVEMENT MARKING SCHEDULE.
- PAVEMENT MARKINGS ARE TO BE MARKED ACCORDING TO ROADWAY STANDARD DRAWINGS UNLESS OTHERWISE NOTED IN THE PLANS.
- PAVEMENT MARKERS ARE TO BE SPACED ACCORDING TO THE ROADWAY STANDARD DRAWINGS.

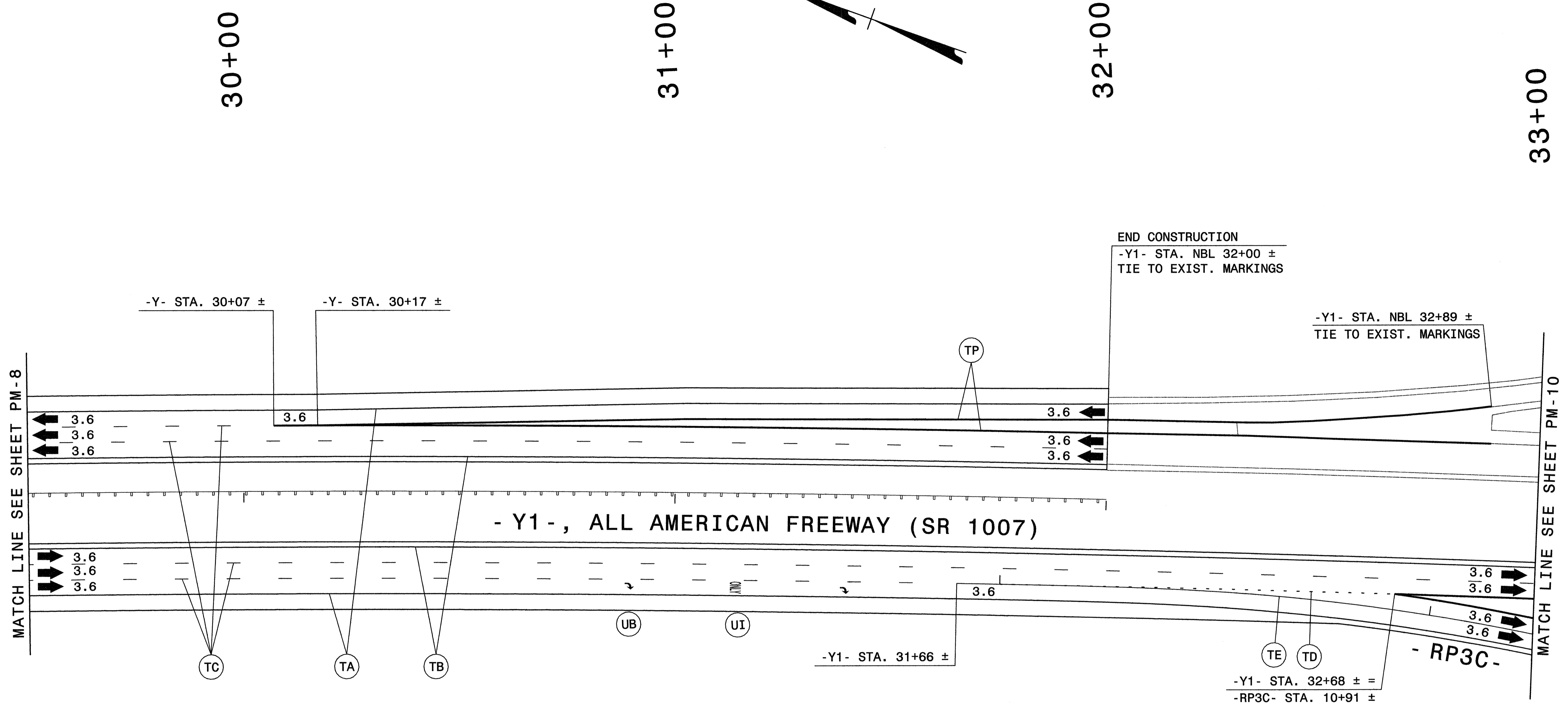
APPROVED: *Michael T. Rzepka* DATE: 7-22-08



FINAL PAVEMENT MARKING SCHEDULE

| | | |
|------------------|--|-----------|
| SCALE: NONE | | REVISIONS |
| DATE: 7-08 | | |
| DWG. BY: BLM | | |
| DESIGN BY: BLM | | |
| REVIEWED BY: MTR | | |

07/24/2008
 R:\1007\U-2519DA_TC.pmp8.dgn
 KO & Associates, P.C.

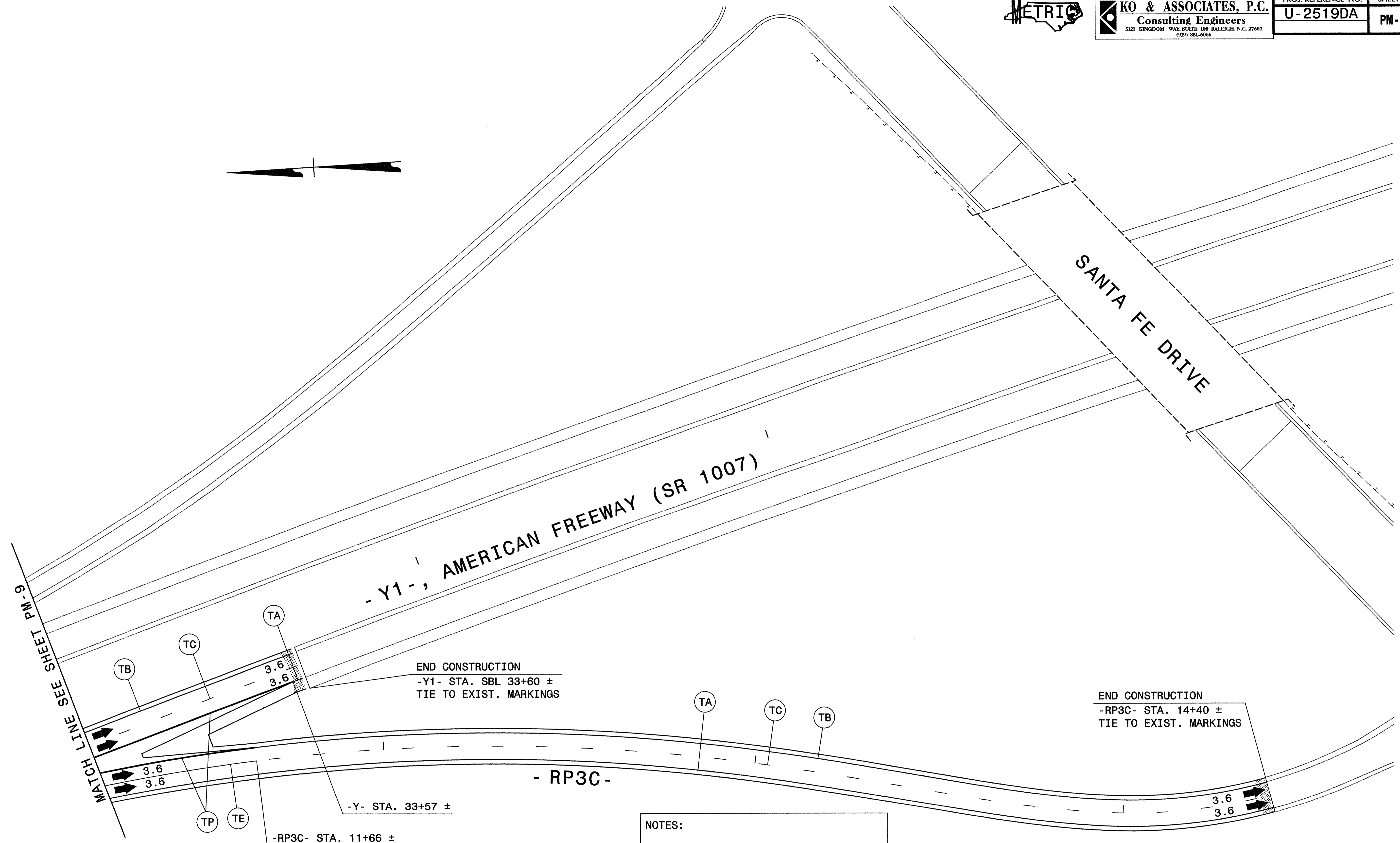
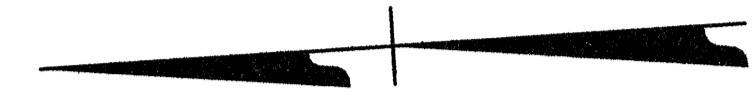


NOTES:

- SEE SHEET PM-1, FOR FINAL PAVEMENT MARKING SCHEDULE.
- PAVEMENT MARKINGS ARE TO BE MARKED ACCORDING TO ROADWAY STANDARD DRAWINGS UNLESS OTHERWISE NOTED IN THE PLANS.
- PAVEMENT MARKERS ARE TO BE SPACED ACCORDING TO THE ROADWAY STANDARD DRAWINGS.

07/24/2008
 R:\1002\U-2519DA_TC.pmp9.dgn
 Ko & Associates, P.C.

| | | |
|--|------------------------------------|--|
| APPROVED: <i>Michael T. Rzepka</i> DATE: 7-22-08 | FINAL PAVEMENT MARKING PLAN | |
| | SCALE: NONE | |
| | DATE: 7-08 | |
| | DWG. BY: BLM | |
| | DESIGN BY: BLM | |
| REVIEWED BY: MTR | REVISIONS | |



MATCH LINE SEE SHEET PM-9

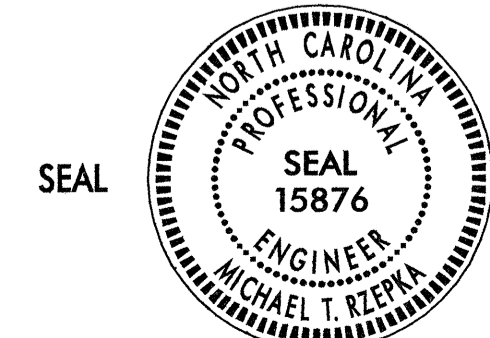
END CONSTRUCTION
 -Y1- STA. SBL 33+60 ±
 TIE TO EXIST. MARKINGS

END CONSTRUCTION
 -RP3C- STA. 14+40 ±
 TIE TO EXIST. MARKINGS

NOTES:

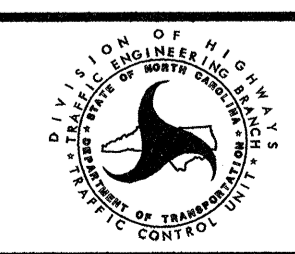
- SEE SHEET PM-1, FOR FINAL PAVEMENT MARKING SCHEDULE.
- PAVEMENT MARKINGS ARE TO BE MARKED ACCORDING TO ROADWAY STANDARD DRAWINGS UNLESS OTHERWISE NOTED IN THE PLANS.
- PAVEMENT MARKERS ARE TO BE SPACED ACCORDING TO THE ROADWAY STANDARD DRAWINGS.

APPROVED: *Michael T. Kozlowski* DATE: 7-22-08



FINAL PAVEMENT MARKING PLAN

SCALE: NONE
 DATE: 7-08
 DWG. BY: BLM
 DESIGN BY: BLM
 REVIEWED BY: MTR

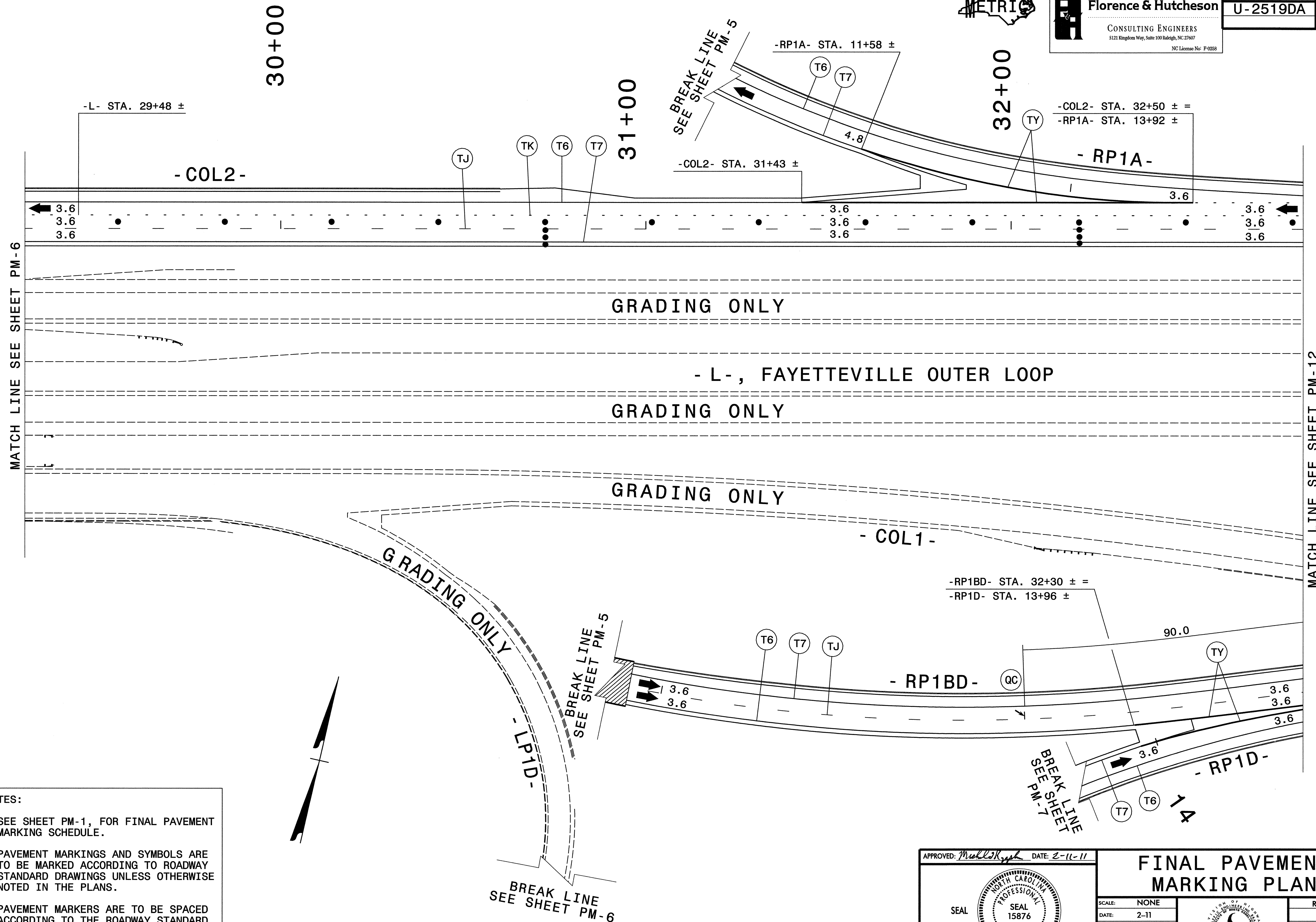


| REVISIONS |
|-----------|
| |
| |
| |



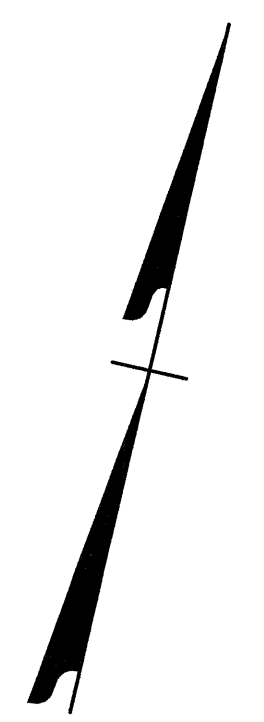
Florence & Hutcheson
 CONSULTING ENGINEERS
 5121 Kingdom Way, Suite 100 Raleigh, NC 27607
 NC License No: F-0035

| | |
|---------------------|-----------|
| PROJ. REFERENCE NO. | SHEET NO. |
| U-2519DA | PM-11 |



NOTES:

- SEE SHEET PM-1, FOR FINAL PAVEMENT MARKING SCHEDULE.
- PAVEMENT MARKINGS AND SYMBOLS ARE TO BE MARKED ACCORDING TO ROADWAY STANDARD DRAWINGS UNLESS OTHERWISE NOTED IN THE PLANS.
- PAVEMENT MARKERS ARE TO BE SPACED ACCORDING TO THE ROADWAY STANDARD DRAWINGS.



APPROVED: *Michael T. Kierka* DATE: 2-11-11

SEAL

FINAL PAVEMENT MARKING PLAN

SCALE: NONE
 DATE: 2-11
 DWG. BY: GEP
 DESIGN BY: GEP
 REVIEWED BY: MTR

| REVISIONS |
|-----------|
| |
| |
| |

CADD FILE

2/11/2011
 C:\Users\mfc\Documents\2519DA\U-2519DA_TC.pmp\pl.dgn
 Kierka & Associates, P.C.



Florence & Hutcheson
 CONSULTING ENGINEERS
 5121 Kingdom Way, Suite 100 Raleigh, NC 27607
 NC License No. F-0958

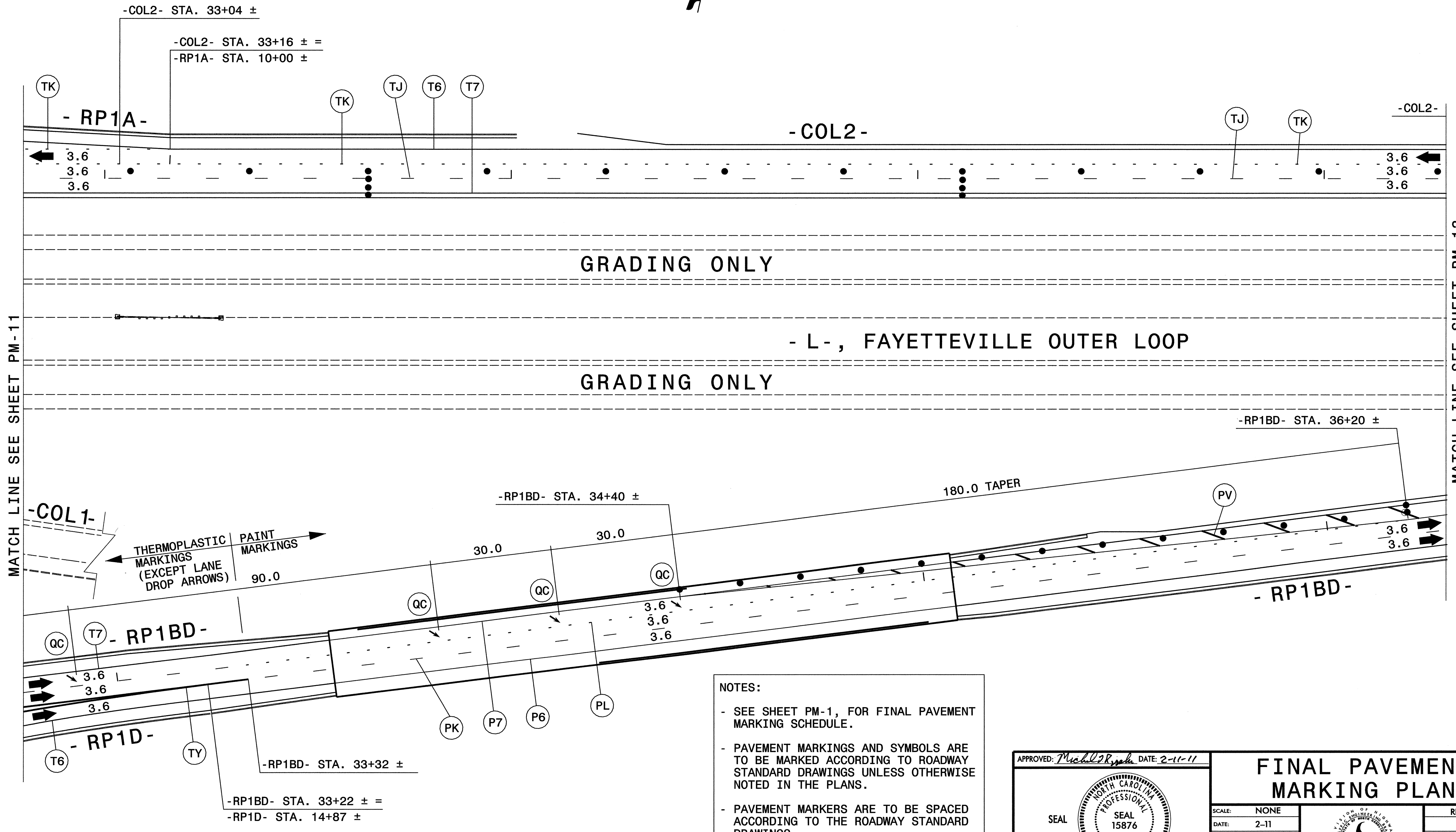
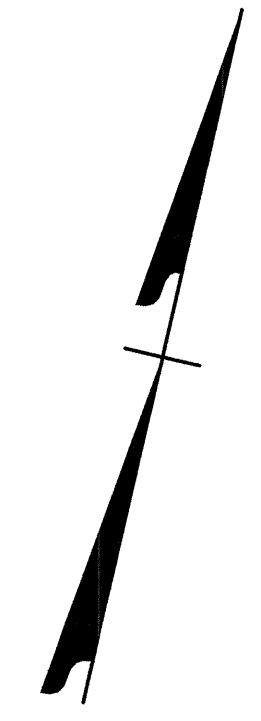
| | |
|---------------------|-----------|
| PROJ. REFERENCE NO. | SHEET NO. |
| U-2519DA | PM-12 |

33+00

34+00

35+00

36+00



MATCH LINE SEE SHEET PM-11

MATCH LINE SEE SHEET PM-13

NOTES:

- SEE SHEET PM-1, FOR FINAL PAVEMENT MARKING SCHEDULE.
- PAVEMENT MARKINGS AND SYMBOLS ARE TO BE MARKED ACCORDING TO ROADWAY STANDARD DRAWINGS UNLESS OTHERWISE NOTED IN THE PLANS.
- PAVEMENT MARKERS ARE TO BE SPACED ACCORDING TO THE ROADWAY STANDARD DRAWINGS.

APPROVED: *Michael T. Roper* DATE: 2-11-11

SEAL

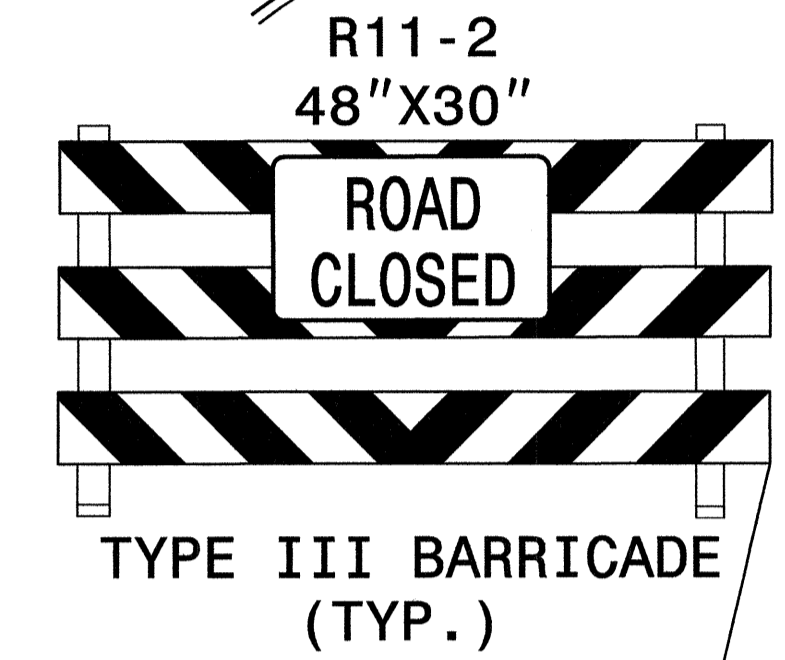
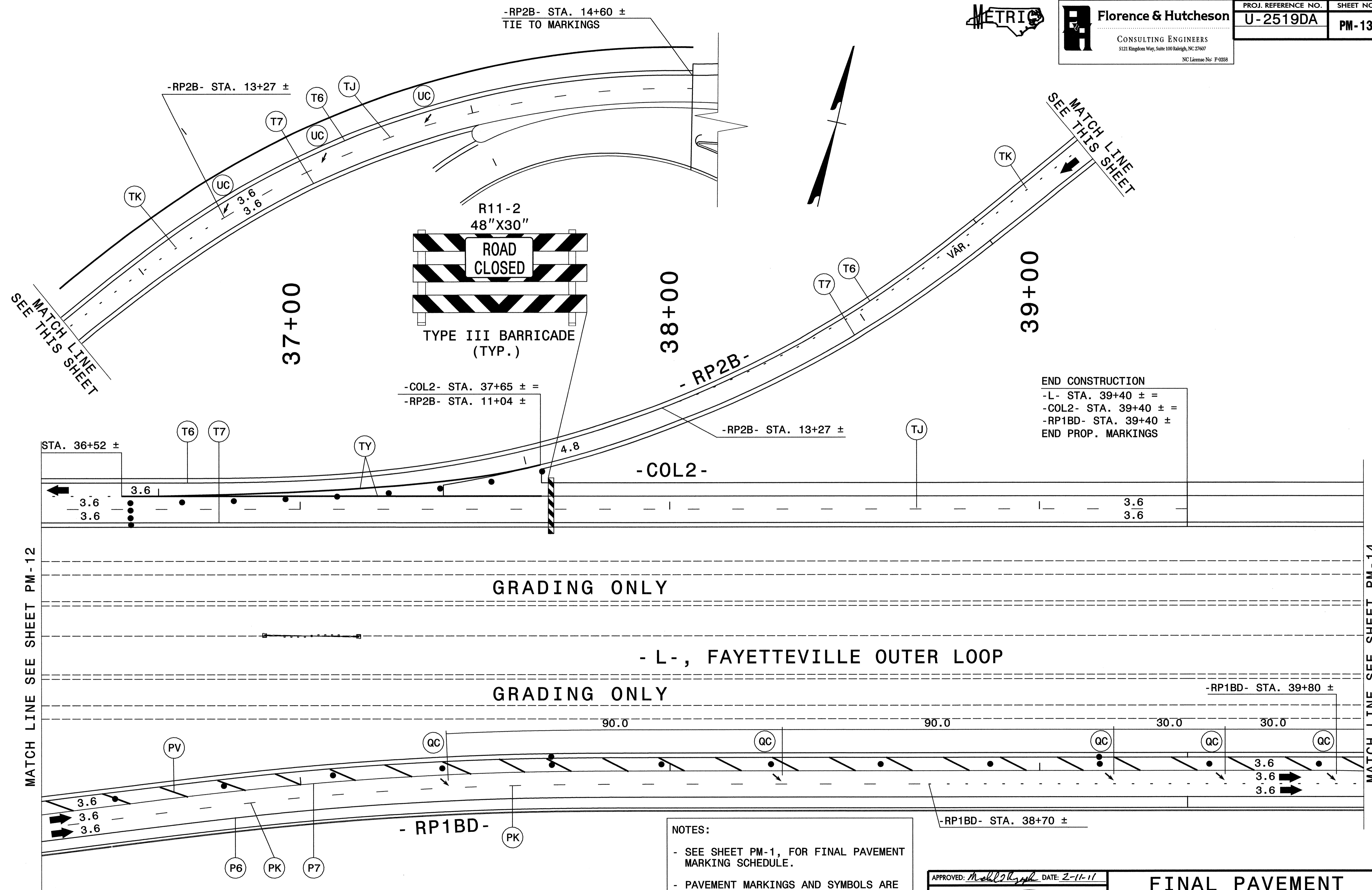
| | |
|------------------------------------|-----------|
| FINAL PAVEMENT MARKING PLAN | |
| SCALE: NONE | REVISIONS |
| DATE: 2-11 | |
| DESIGN BY: GEP | |
| DESIGN BY: GEP | |
| REVIEWED BY: MTR | |

2/11/2011
 P:\VT\of\fic\U-2519da\100% rev feb 2011\U-2519DA_TC_pmp2.dgn
 K.O. & Associates, P.C.



Florence & Hutcheson
 CONSULTING ENGINEERS
 5121 Kingdom Way, Suite 100 Raleigh, NC 27607
 NC License No. P-0258

| | |
|--|---------------------------|
| PROJ. REFERENCE NO. U-2519DA | SHEET NO. PM-13 |
|--|---------------------------|



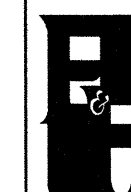
END CONSTRUCTION
 -L- STA. 39+40 ± =
 -COL2- STA. 39+40 ± =
 -RP1BD- STA. 39+40 ±
 END PROP. MARKINGS

NOTES:
 - SEE SHEET PM-1, FOR FINAL PAVEMENT MARKING SCHEDULE.
 - PAVEMENT MARKINGS AND SYMBOLS ARE TO BE MARKED ACCORDING TO ROADWAY STANDARD DRAWINGS UNLESS OTHERWISE NOTED IN THE PLANS.
 - PAVEMENT MARKERS ARE TO BE SPACED ACCORDING TO THE ROADWAY STANDARD DRAWINGS.

APPROVED: *Michael T. Rzepka* DATE: 2-11-11
 SEAL

| | |
|------------------------------------|-----------|
| FINAL PAVEMENT MARKING PLAN | |
| SCALE: NONE | REVISIONS |
| DATE: 2-11 | |
| DWG. BY: GEP | |
| DESIGN BY: GEP | |
| REVIEWED BY: MTR | |

2/11/2011
 P:\tr\offic\U-2519da\007 Rev feb 2011\U-2519DA_Tc.pmp3.dgn
 Ko & Associates, P.C.



Florence & Hutcheson

CONSULTING ENGINEERS

5121 Kingdom Way, Suite 100 Raleigh, NC 27607

NC License No. P-0258

| | |
|---------------------------------|--------------------|
| PROJ. REFERENCE NO. U-2519DA | SHEET NO. PM-14 |
|---------------------------------|--------------------|

MATCH LINE SEE SHEET PM-13

GRADING ONLY

- L -, FAYETTEVILLE OUTER LOOP

GRADING ONLY

- RP1BD -

180.0 TAPER

PV

3.6

- RP1BD -

P6

PL

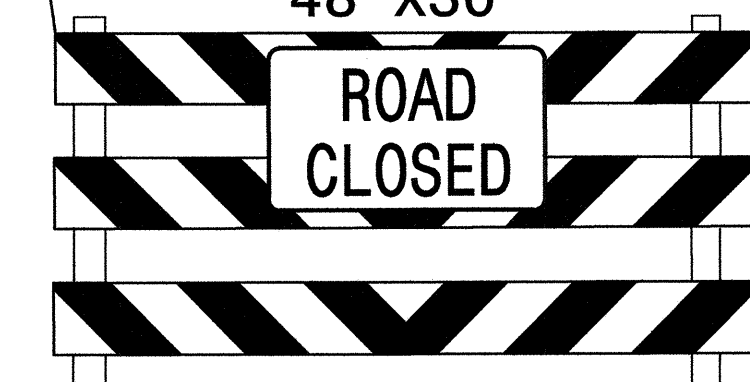
P7

- RP1BD - STA. 39+80 ±

END PAVING

- RP1BD - STA. 42+80 ±

R11-2
48"X30"



TYPE III BARRICADE
(TYP.)

- LP2D - STA. 11+40 ±

QB

PL

QA

QA

P7

- LP2D - STA. 12+47 ±

- SPUR2D - STA. 10+42 ±

TIE TO MARKINGS

PR

PK

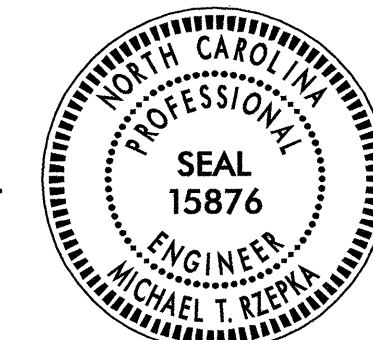
3.6
3.6
3.6

NOTES:

- SEE SHEET PM-1, FOR FINAL PAVEMENT MARKING SCHEDULE.
- PAVEMENT MARKINGS AND SYMBOLS ARE TO BE MARKED ACCORDING TO ROADWAY STANDARD DRAWINGS UNLESS OTHERWISE NOTED IN THE PLANS.
- PAVEMENT MARKERS ARE TO BE SPACED ACCORDING TO THE ROADWAY STANDARD DRAWINGS.

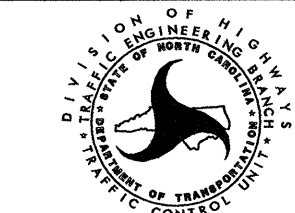
APPROVED: *Michael R. Rzepka* DATE: 2-11-11

SEAL



FINAL PAVEMENT MARKING PLAN

SCALE: NONE
DATE: 2-11
DWG. BY: GEP
DESIGN BY: GEP
REVIEWED BY: MTR



REVISIONS

| | | |
|-----|------|-------------|
| NO. | DATE | DESCRIPTION |
| | | |
| | | |

2/11/2011 P:\Projects\U-2519DA\100% rev feb 2011\U-2519DA_TC.pmp14.dgn Ko & Associates, P.C.