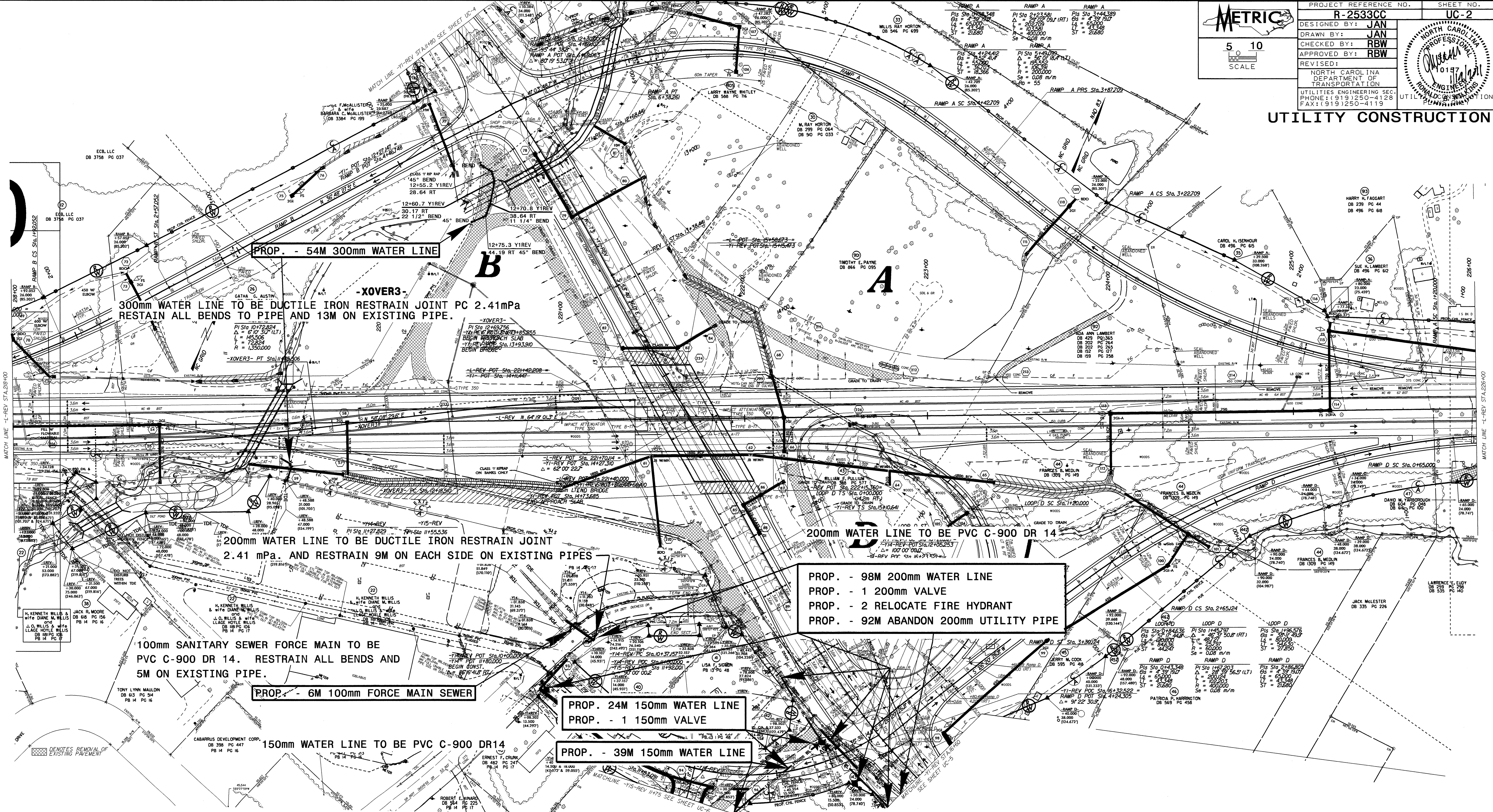


PROJECT REFERENCE NO.	R-2533CC	SHEET NO.	UC-2
DESIGNED BY:	JAN		
DRAWN BY:	JAN		
CHECKED BY:	RBW		
APPROVED BY:	RBW		
REVISED:			
NORTH CAROLINA DEPARTMENT OF TRANSPORTATION			
UTILITIES ENGINEERING SECTION PHONE: (919)250-4128 FAX: (919)250-4119			

UTILITY CONSTRUCTION



PROP. - 54M 300mm WATER LINE

-XOVER3-
300mm WATER LINE TO BE DUCTILE IRON RESTRAIN JOINT PC 2.41mPa
RESTRAIN ALL BENDS TO PIPE AND 13M ON EXISTING PIPE.

200mm WATER LINE TO BE DUCTILE IRON RESTRAIN JOINT
2.41 mPa. AND RESTRAIN 9M ON EACH SIDE ON EXISTING PIPES

PROP. - 98M 200mm WATER LINE
PROP. - 1 200mm VALVE
PROP. - 2 RELOCATE FIRE HYDRANT
PROP. - 92M ABANDON 200mm UTILITY PIPE

100mm SANITARY SEWER FORCE MAIN TO BE
PVC C-900 DR 14. RESTRAIN ALL BENDS AND
5M ON EXISTING PIPE.

PROP. - 6M 100mm FORCE MAIN SEWER

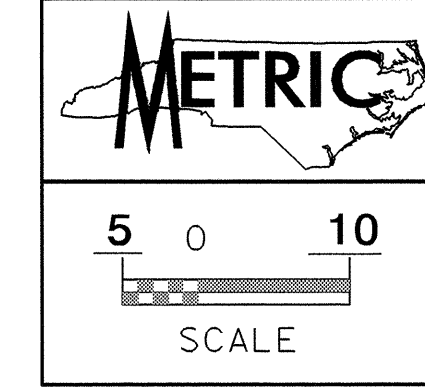
PROP. 24M 150mm WATER LINE
PROP. - 1 150mm VALVE

PROP. - 39M 150mm WATER LINE

150mm WATER LINE TO BE PVC C-900 DR14

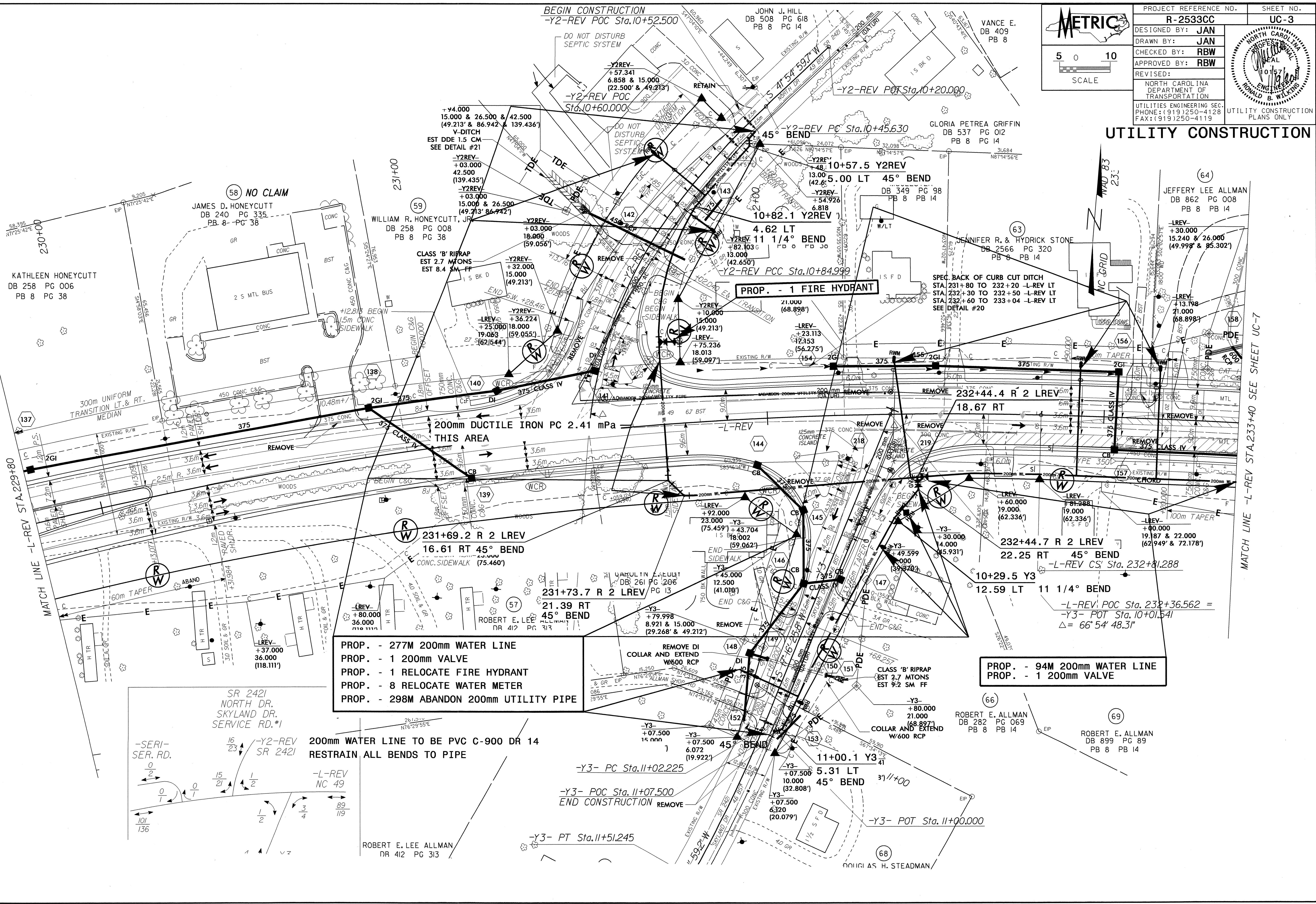
DATE: 10/15/10
BY: J.M. WILSON
CHECKED BY: J.M. WILSON
SCALE: AS SHOWN

REMOVES EXISTING PAVEMENT



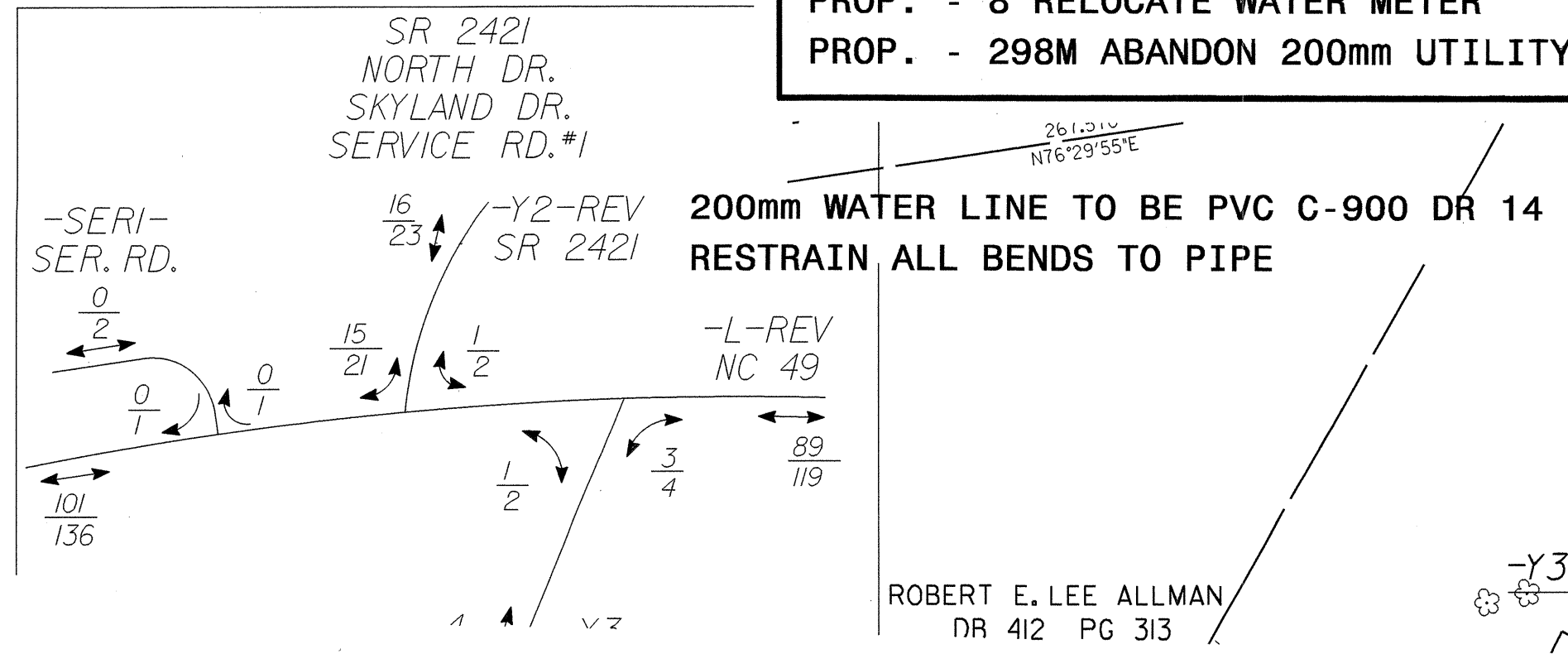
PROJECT REFERENCE NO.	R-2533CC	SHEET NO.	UC-3
DESIGNED BY:	JAN		
DRAWN BY:	JAN		
CHECKED BY:	RBW		
APPROVED BY:	RBW		
REVISED:		NORTH CAROLINA DEPARTMENT OF TRANSPORTATION UTILITIES ENGINEERING SEC. PHONE: (919) 250-4128 FAX: (919) 250-4119	
		UTILITY CONSTRUCTION PLANS ONLY	

UTILITY CONSTRUCTION

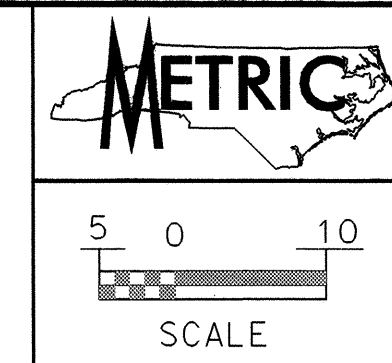


- PROP. - 277M 200mm WATER LINE
- PROP. - 1 200mm VALVE
- PROP. - 1 RELOCATE FIRE HYDRANT
- PROP. - 8 RELOCATE WATER METER
- PROP. - 298M ABANDON 200mm UTILITY PIPE

- PROP. - 94M 200mm WATER LINE
- PROP. - 1 200mm VALVE

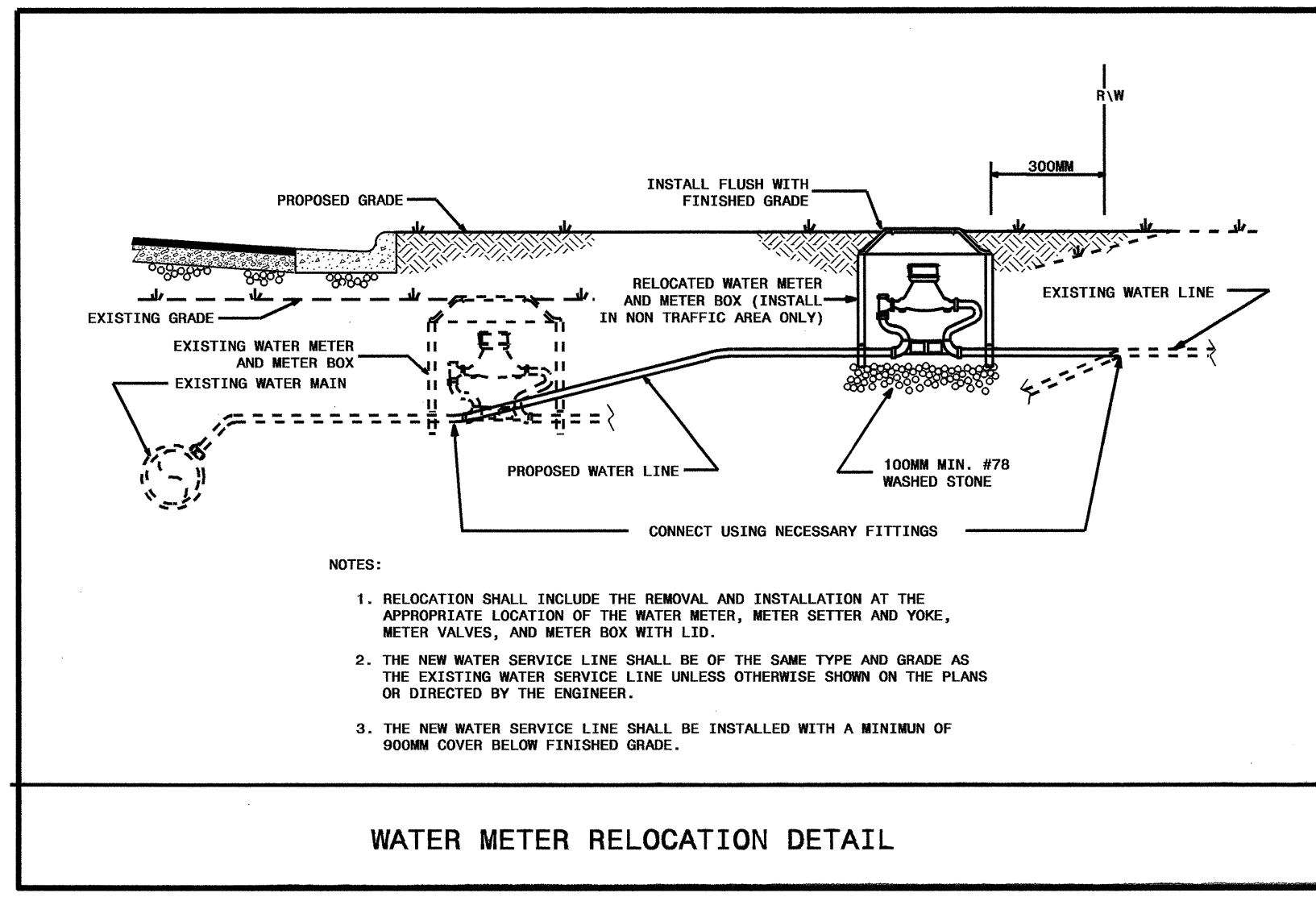


8/17/2011
 R:\Utilities\Projects\2533CC\UC-13_UC3.pcdwg
 10/13/2011 10:45:44 AM
 RBW

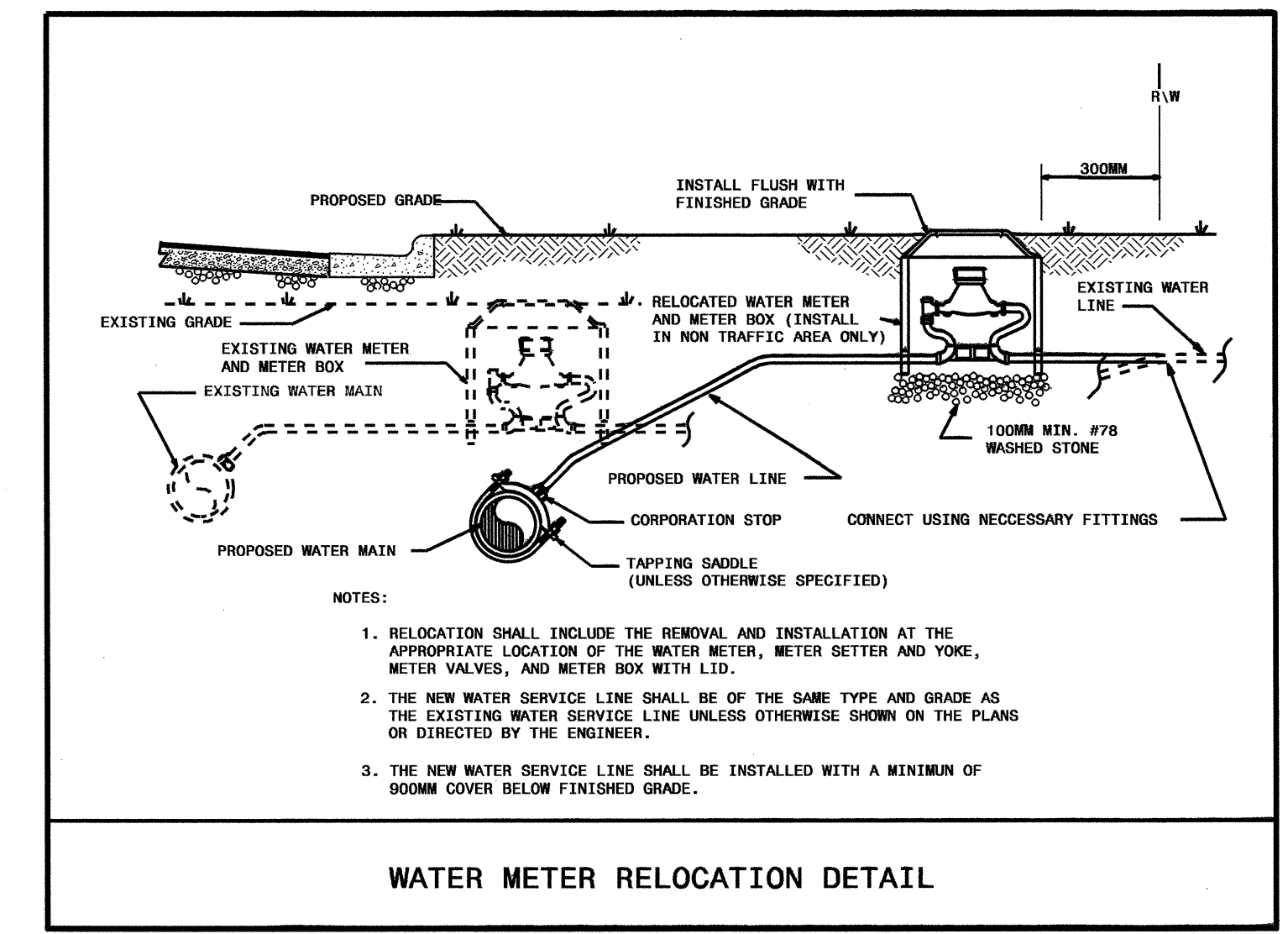


PROJECT REFERENCE NO.	SHEET NO.
R-2533CC	UC-4
DESIGNED BY: JAN	
DRAWN BY: JAN	
CHECKED BY: RBW	
APPROVED BY: RBW	
REVISED:	
NORTH CAROLINA DEPARTMENT OF TRANSPORTATION UTILITIES ENGINEERING SEC. PHONE: (919)250-4128 FAX: (919)250-4119	
UTILITY CONSTRUCTION PLANS ONLY	

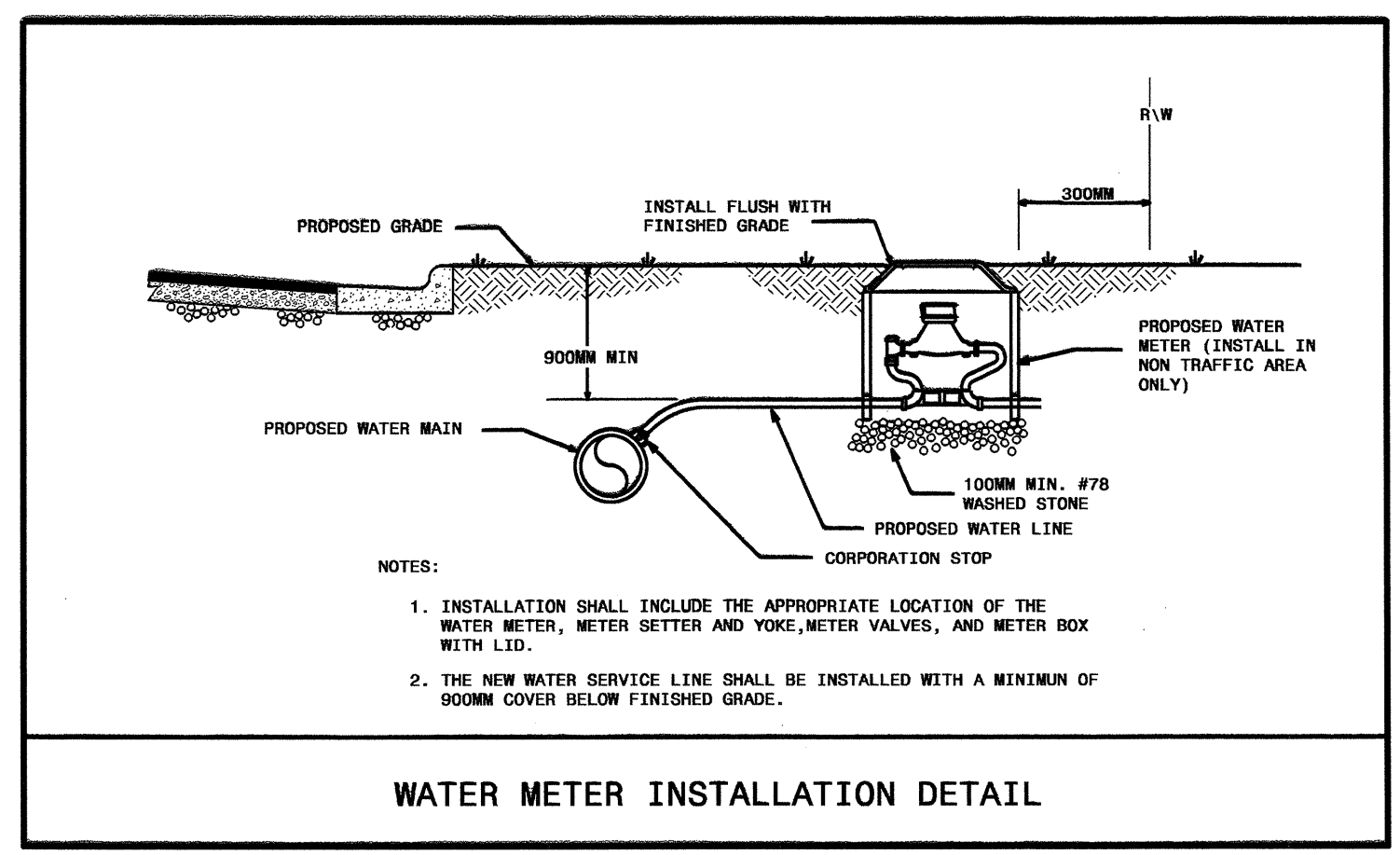
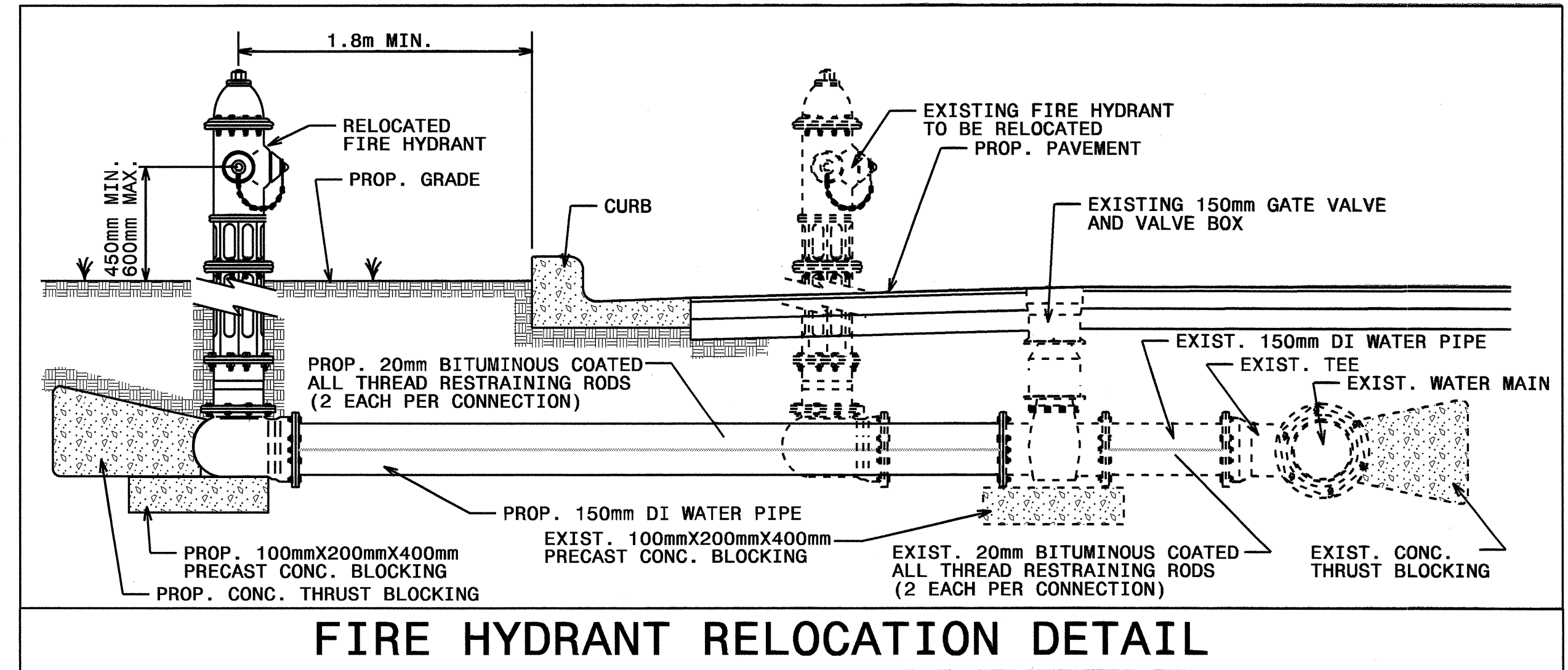
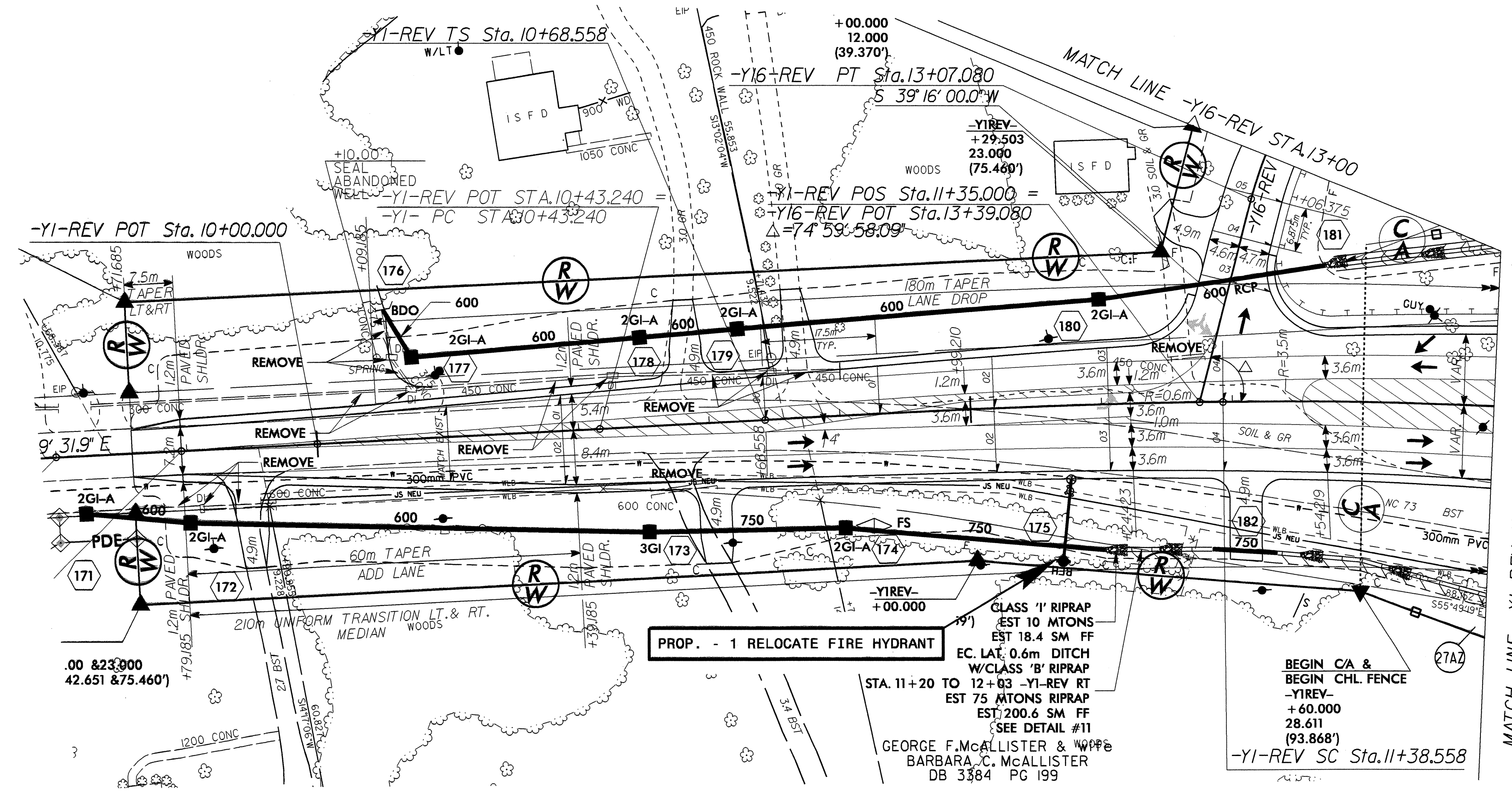
UTILITY CONSTRUCTION



- NOTES:
1. RELOCATION SHALL INCLUDE THE REMOVAL AND INSTALLATION AT THE APPROPRIATE LOCATION OF THE WATER METER, METER SETTER AND YOKE, METER VALVES, AND METER BOX WITH LTD.
 2. THE NEW WATER SERVICE LINE SHALL BE OF THE SAME TYPE AND GRADE AS THE EXISTING WATER SERVICE LINE UNLESS OTHERWISE SHOWN ON THE PLANS OR DIRECTED BY THE ENGINEER.
 3. THE NEW WATER SERVICE LINE SHALL BE INSTALLED WITH A MINIMUM OF 900MM COVER BELOW FINISHED GRADE.



- NOTES:
1. RELOCATION SHALL INCLUDE THE REMOVAL AND INSTALLATION AT THE APPROPRIATE LOCATION OF THE WATER METER, METER SETTER AND YOKE, METER VALVES, AND METER BOX WITH LTD.
 2. THE NEW WATER SERVICE LINE SHALL BE OF THE SAME TYPE AND GRADE AS THE EXISTING WATER SERVICE LINE UNLESS OTHERWISE SHOWN ON THE PLANS OR DIRECTED BY THE ENGINEER.
 3. THE NEW WATER SERVICE LINE SHALL BE INSTALLED WITH A MINIMUM OF 900MM COVER BELOW FINISHED GRADE.


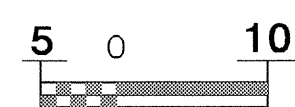
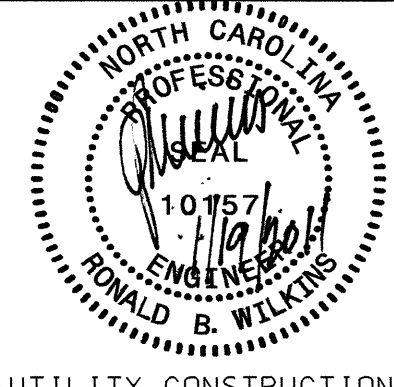


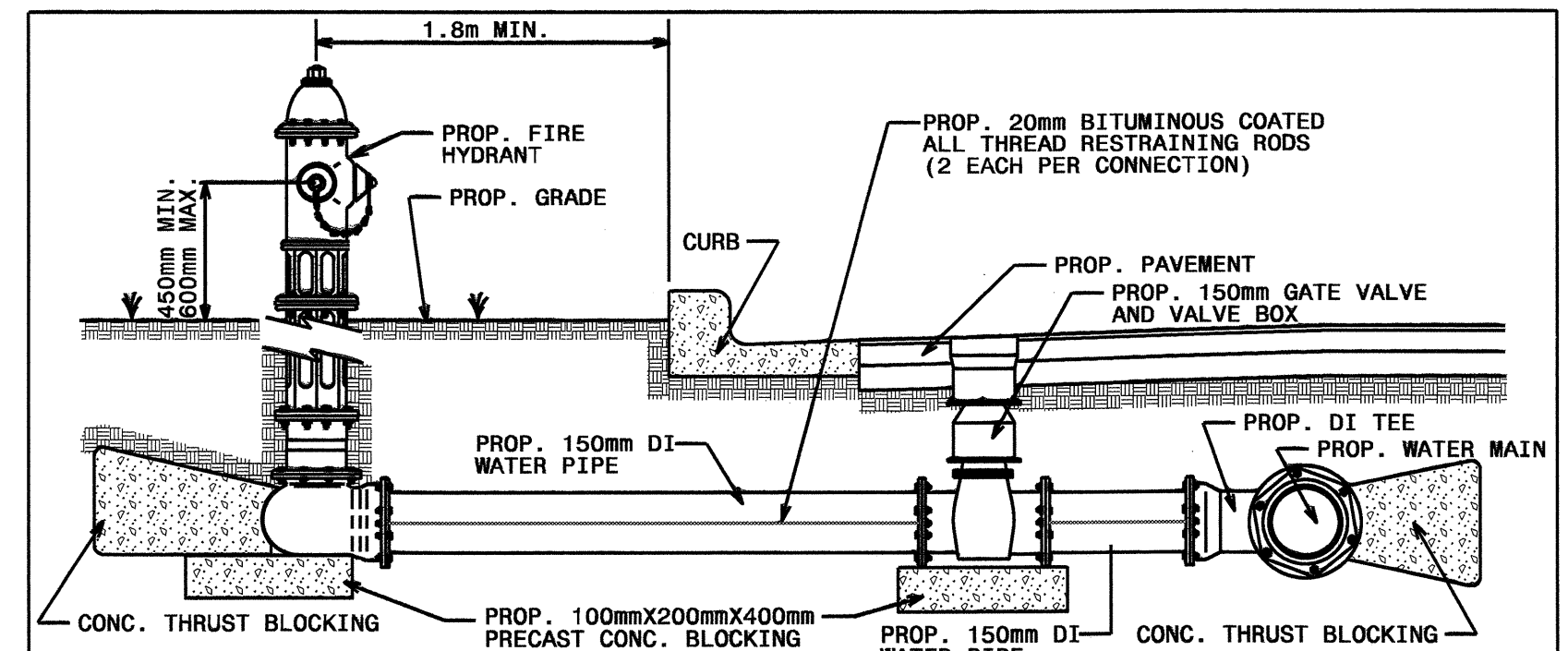
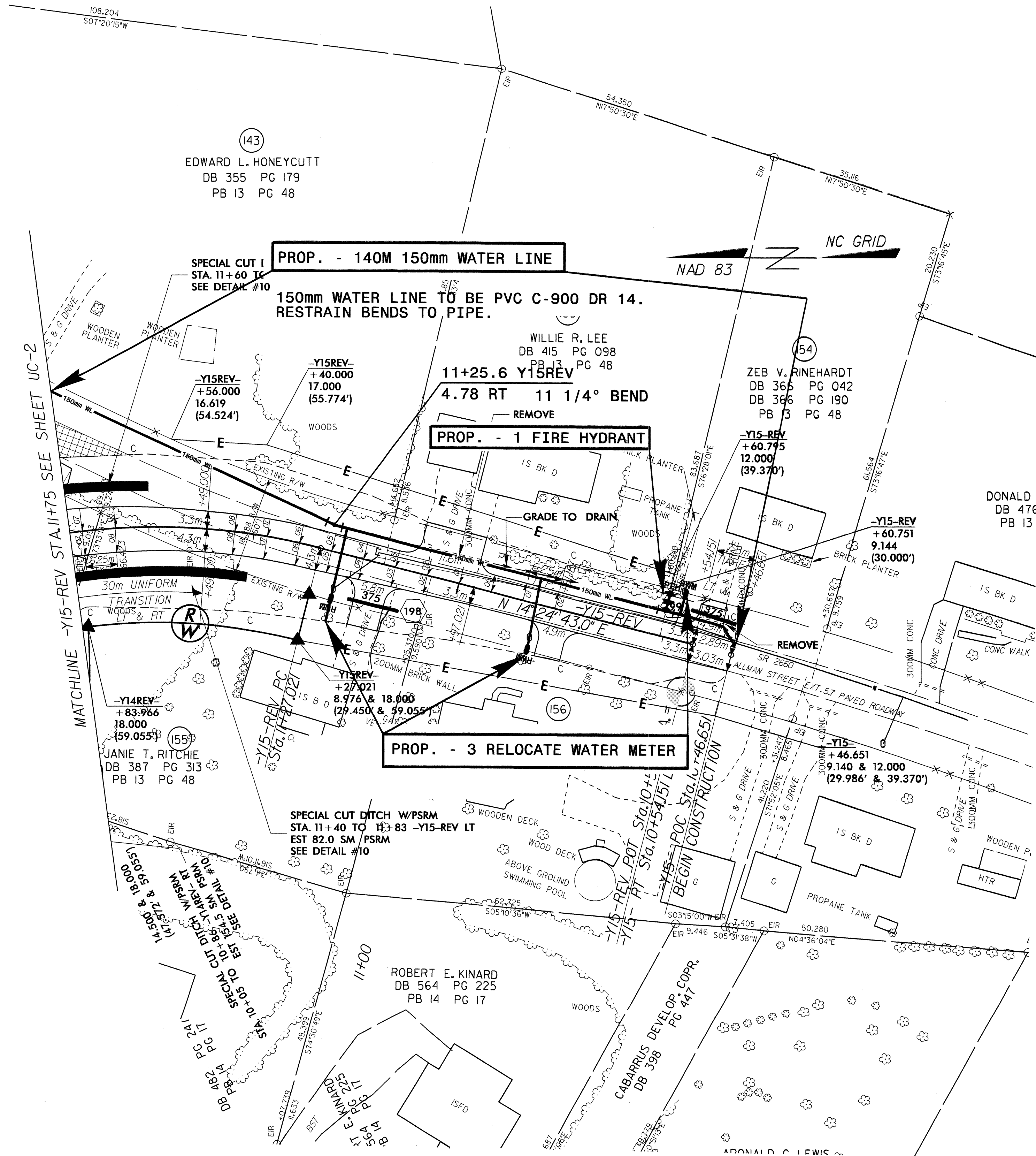
- NOTES:
1. INSTALLATION SHALL INCLUDE THE APPROPRIATE LOCATION OF THE WATER METER, METER SETTER AND YOKE, METER VALVES, AND METER BOX WITH LTD.
 2. THE NEW WATER SERVICE LINE SHALL BE INSTALLED WITH A MINIMUM OF 900MM COVER BELOW FINISHED GRADE.

19-JAN-2011 13:46
 R:\Utilities\Projects\2533CC\UC-16_UC4_psh.dgn
 User: jw...

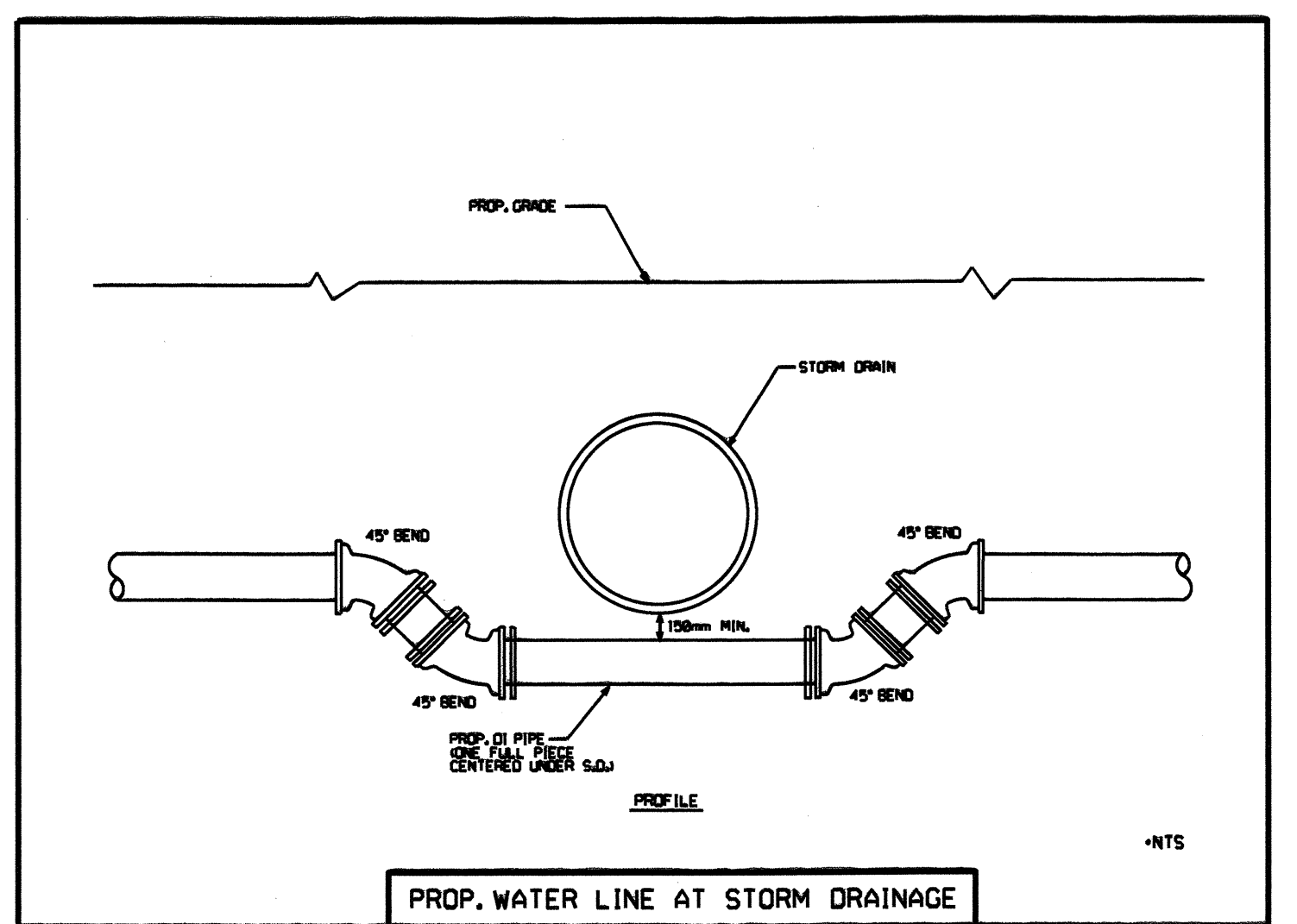
MATCH LINE -Y1-REV STA. 11+80 SEE SHEET UC-2

8/17/09

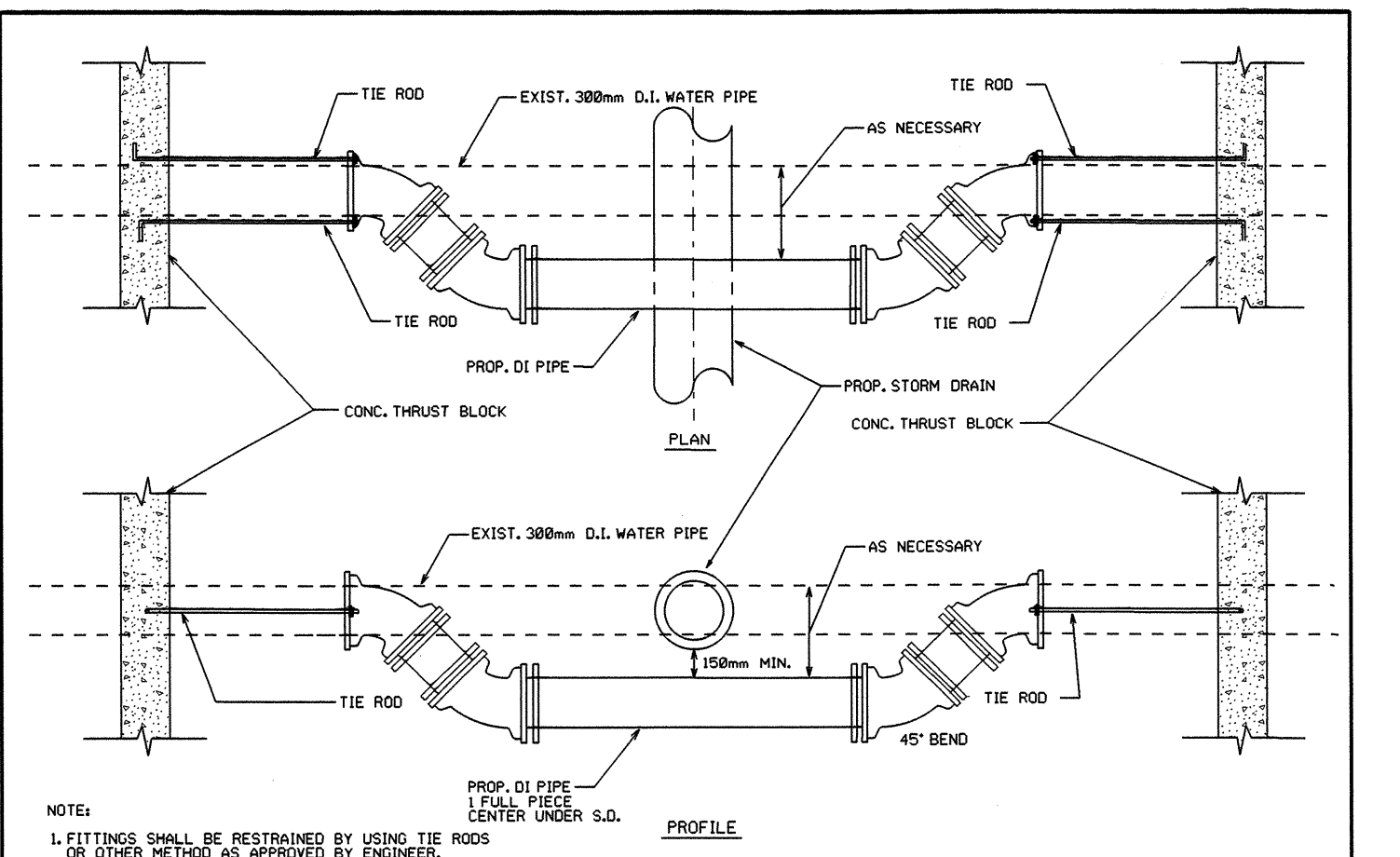
 SCALE 	PROJECT REFERENCE NO.	SHEET NO.
	R-2533CC	UC-6
	DESIGNED BY: JAN	
	DRAWN BY: JAN	
	CHECKED BY: RBW	
APPROVED BY: RBW		
REVISI:	NORTH CAROLINA DEPARTMENT OF TRANSPORTATION UTILITIES ENGINEERING SEC. PHONE: (919)250-4128 FAX: (919)250-4119	
UTILITY CONSTRUCTION		



FIRE HYDRANT INSTALLATION DETAIL (PAVED AREAS)



PROP. WATER LINE AT STORM DRAINAGE

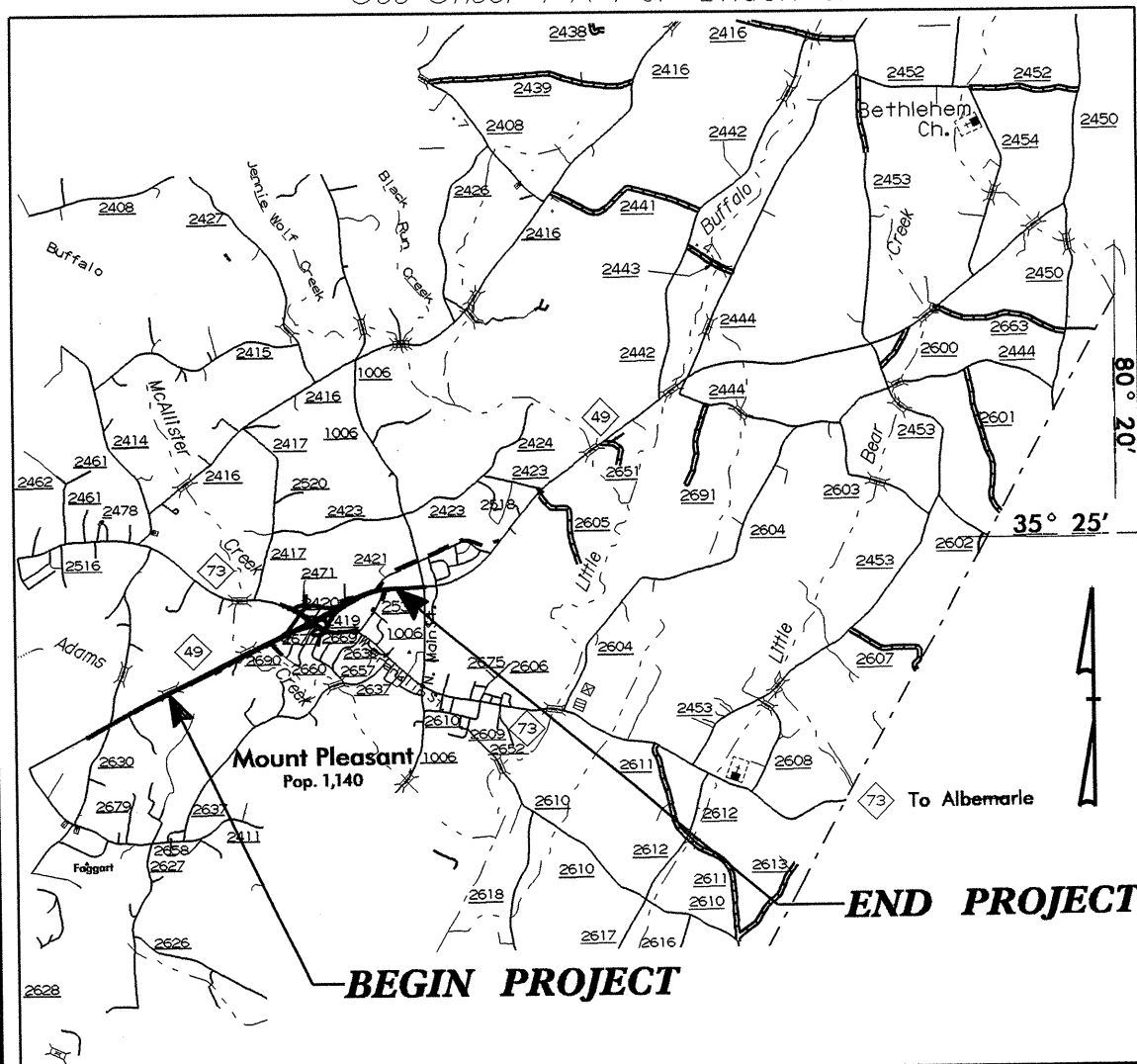


RELOCATION OF 300mm D.I. WATER PIPE AT PROP. STORM DRAINAGE AS SHOWN ON PLANS

19-MAN-2011-03-05
11:11:11
UC-6.dgn

9/20/99

See Sheet 1-A For Index of Sheets



VICINITY MAP OF PROJECT R-2533CC

STATE OF NORTH CAROLINA
DIVISION OF HIGHWAYS

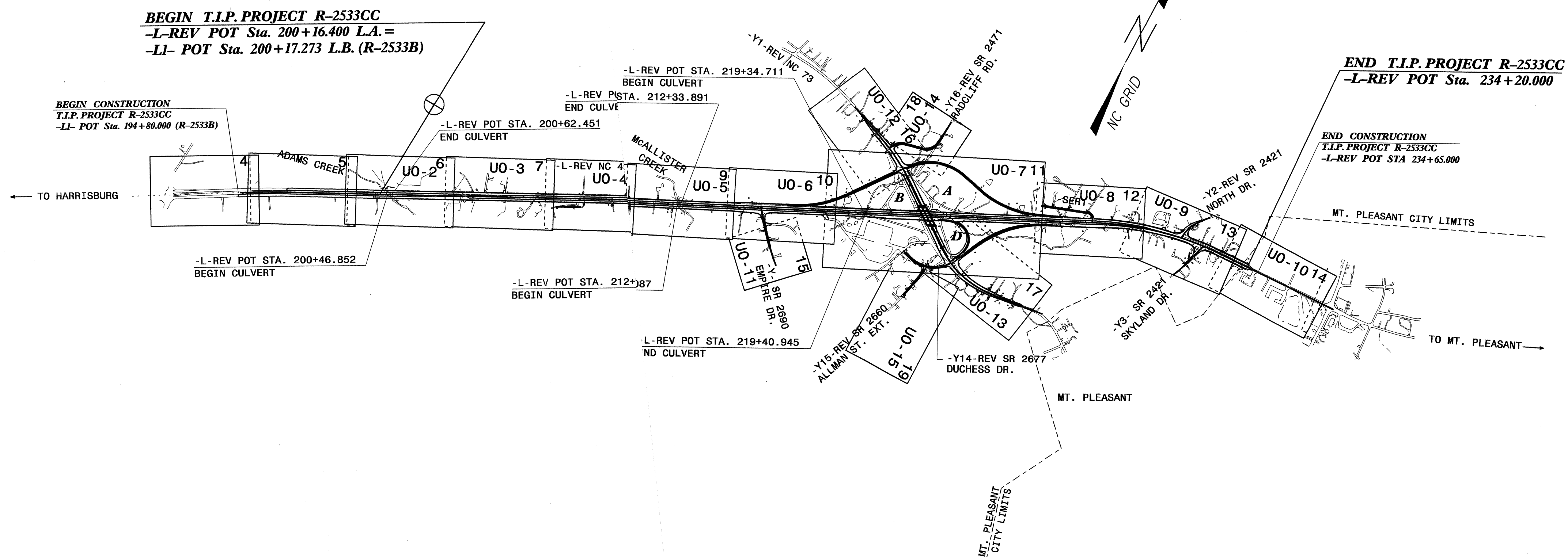
**UTILITIES BY OTHERS PLANS
CABARRUS COUNTY**

LOCATION NC 49 FROM EAST OF SR 2630 TO EAST OF SR 2421

TYPE OF WORK: UTILITY CONSTRUCTION POWER, TELEPHONE,
CABLE TV, AND FIBER OPTIC

ALL DIMENSIONS IN
THESE PLANS ARE IN METERS
AND/OR MILLIMETERS
UNLESS OTHERWISE SHOWN

T.I.P. NO.	SHEET NO.
R-2533CC	UO-1



PROJECT: R-2533CC

19-JAN-2011 13:51 R:\Utilities\Projects\R2533CC.Ut..Title.UO1.psh.dgn

GRAPHIC SCALES

0
PLANS

0
PROFILE (HORIZONTAL)

0
PROFILE (VERTICAL)

INDEX OF SHEETS

SHEET NO.	DESCRIPTION
UO-1	TITLE SHEET
UO-2 THRU UO-15	UTILITY BY OTHERS PLAN SHEETS

UTILITY OWNERS ON PROJECT

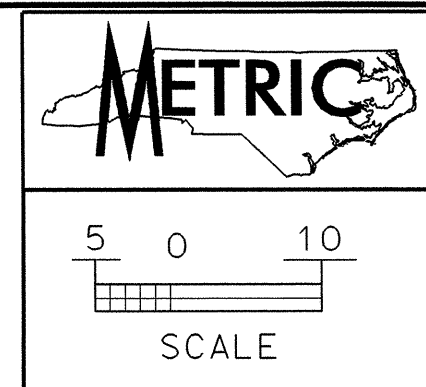
- POWER(DISTRIBUTION) : DUKE ENERGY
- POWER(DISTRIBUTION) : UNION EMC
- TELEPHONE : WIND STREAM
- CABLE TV : TIME WARNER CABLE

PREPARED IN THE OFFICE OF:
**DIVISION OF HIGHWAYS
UTILITIES UNIT**

1555 MAIL SERVICES CENTER
RALEIGH NC 27699-1591
PHONE (919) 250-4128
FAX (919) 250-4119

Roger Worthington, P.E. UTILITIES SECTION ENGINEER
R. B. WILKINS, P.E. UTILITIES SQUAD LEADER PROJECT ENGINEER
JONG-TAE YOON UTILITIES PROJECT DESIGNER

8/17/99

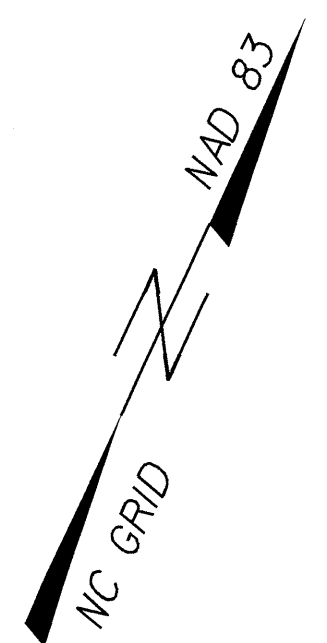


PROJECT REFERENCE NO.	SHEET NO.
R-2533CC	U0-2

UTILITIES BY OTHERS

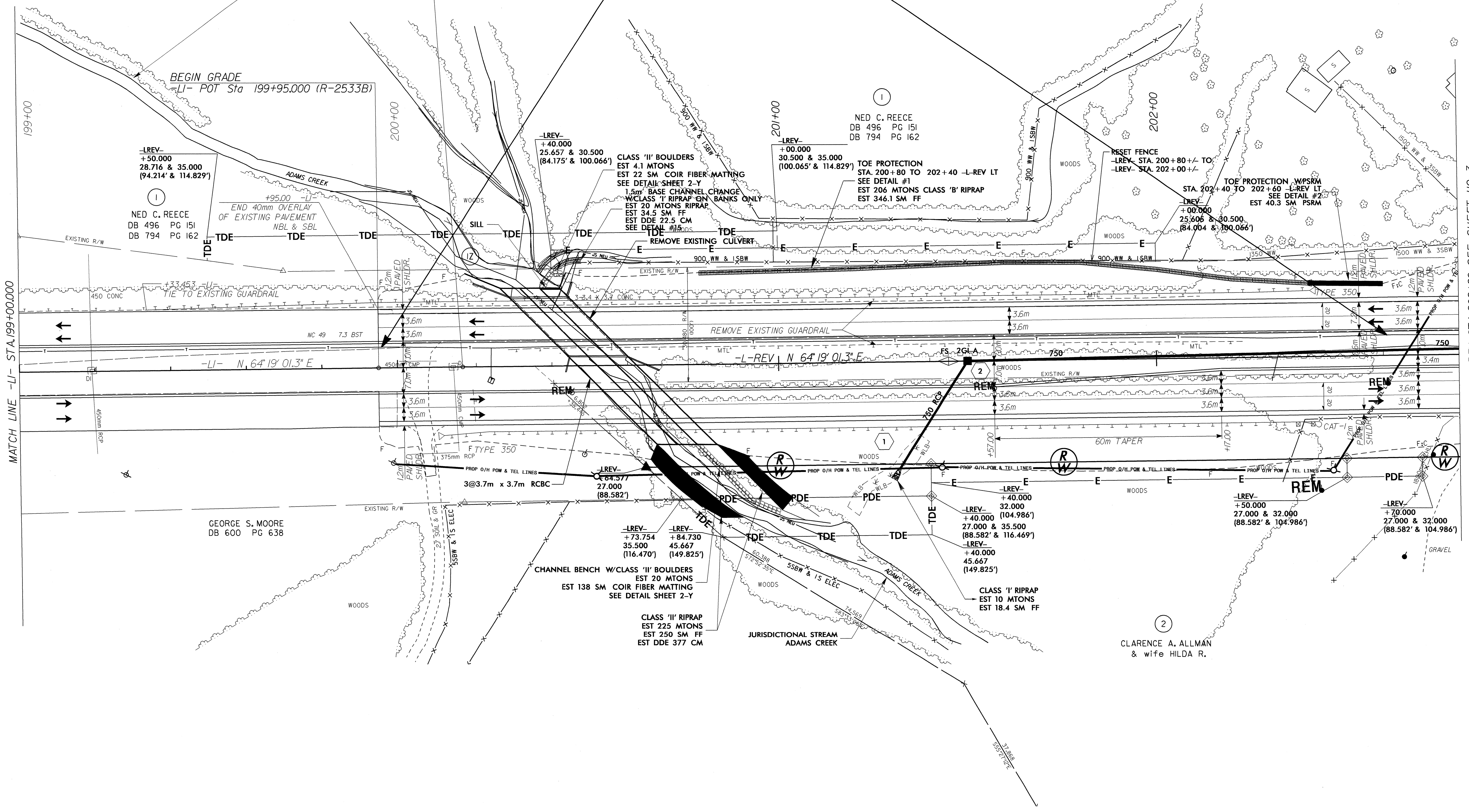
NOTE:
ALL PROPOSED UTILITY WORK
SHOWN ON THIS SHEET WILL
BE DONE BY OTHERS

ABANDONED



BEGIN T.I.P. PROJECT R-2533CC
-L-REV POT Sta 200+16.400 L.A.=
-LI- POT Sta 200+17.273 L.B. (R-2533B)

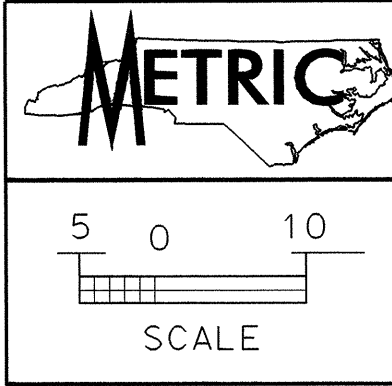
BEGIN GRADE
-LI- POT Sta 199+95.000 (R-2533B)



MATCH LINE -LI- STA. 199+00.000

MATCH LINE -L-REV STA. 202+80 SEE SHEET U0-3

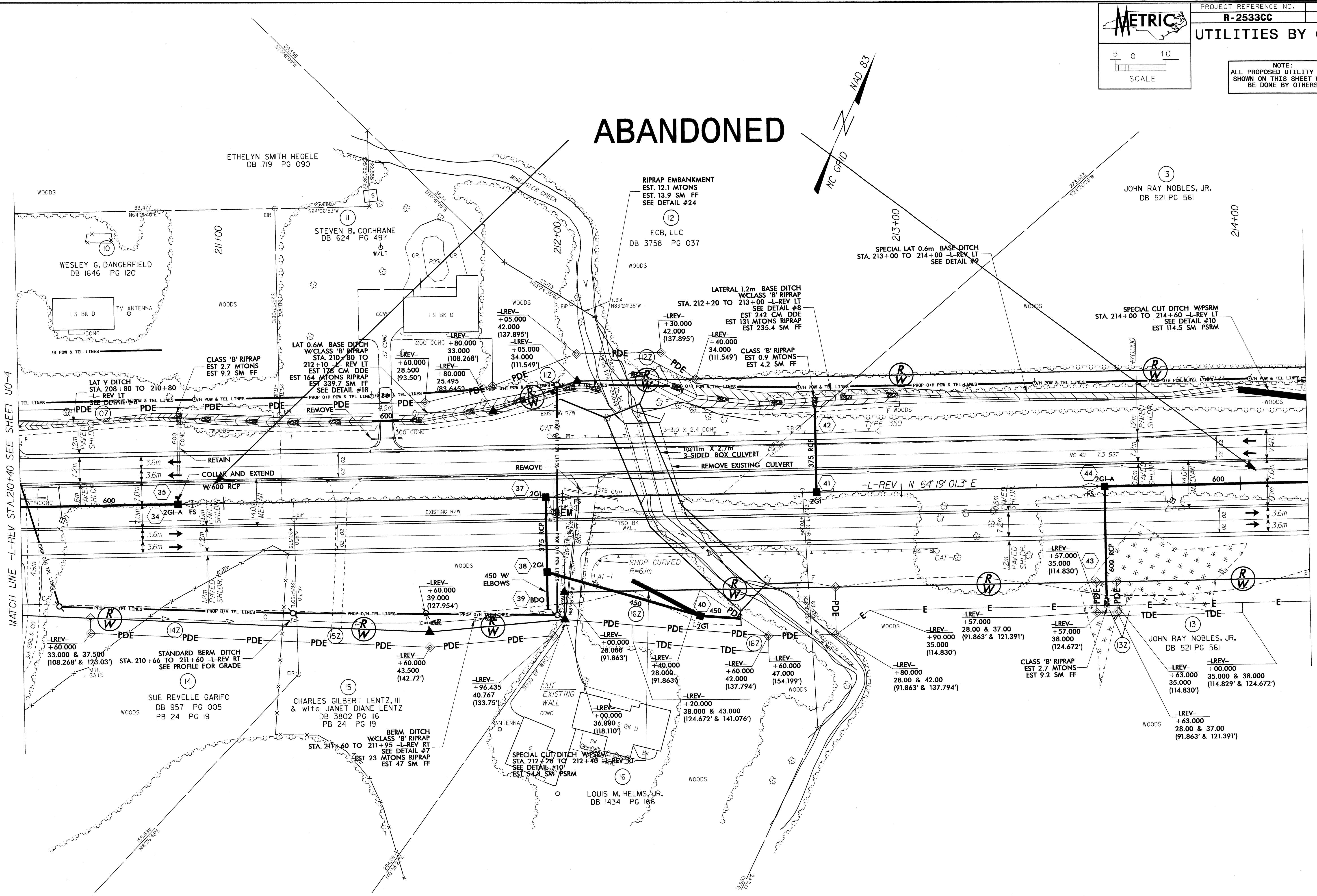
9: JAN 20 11 56 AM
C:\JAN 20 11 56 AM
R-2533CC-UT-6-UD2-psh.dgn
10:00:00 AM
1/20/11 10:00:00 AM



UTILITIES BY OTHERS

NOTE: ALL PROPOSED UTILITY WORK SHOWN ON THIS SHEET WILL BE DONE BY OTHERS

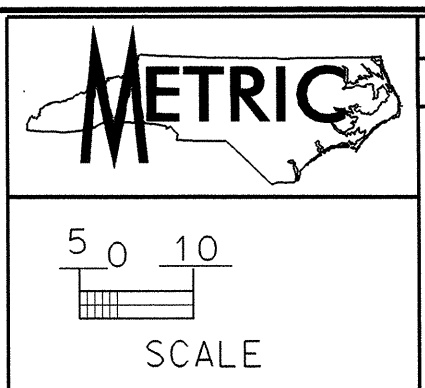
ABANDONED



MATCH LINE -L-REV STA.210+40 SEE SHEET U0-4

MATCH LINE -L-REV STA.214+20 SEE SHEET U0-6

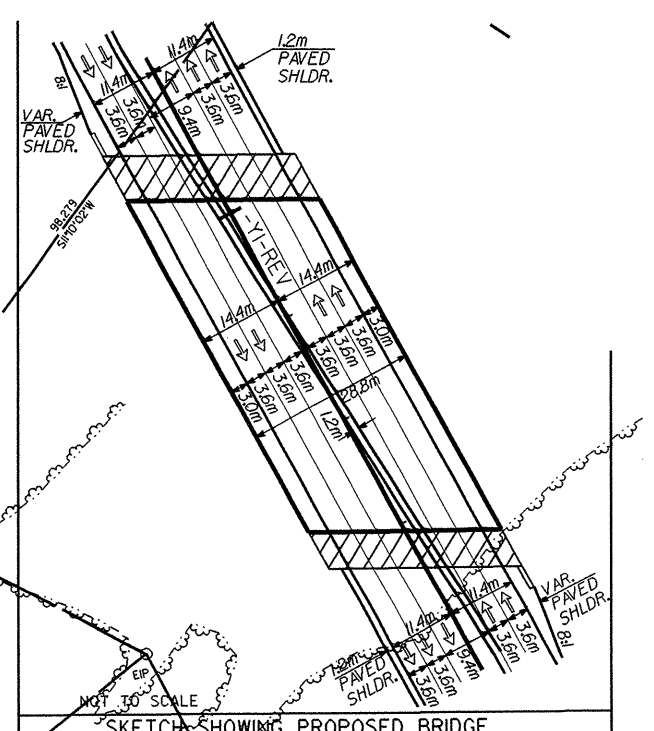
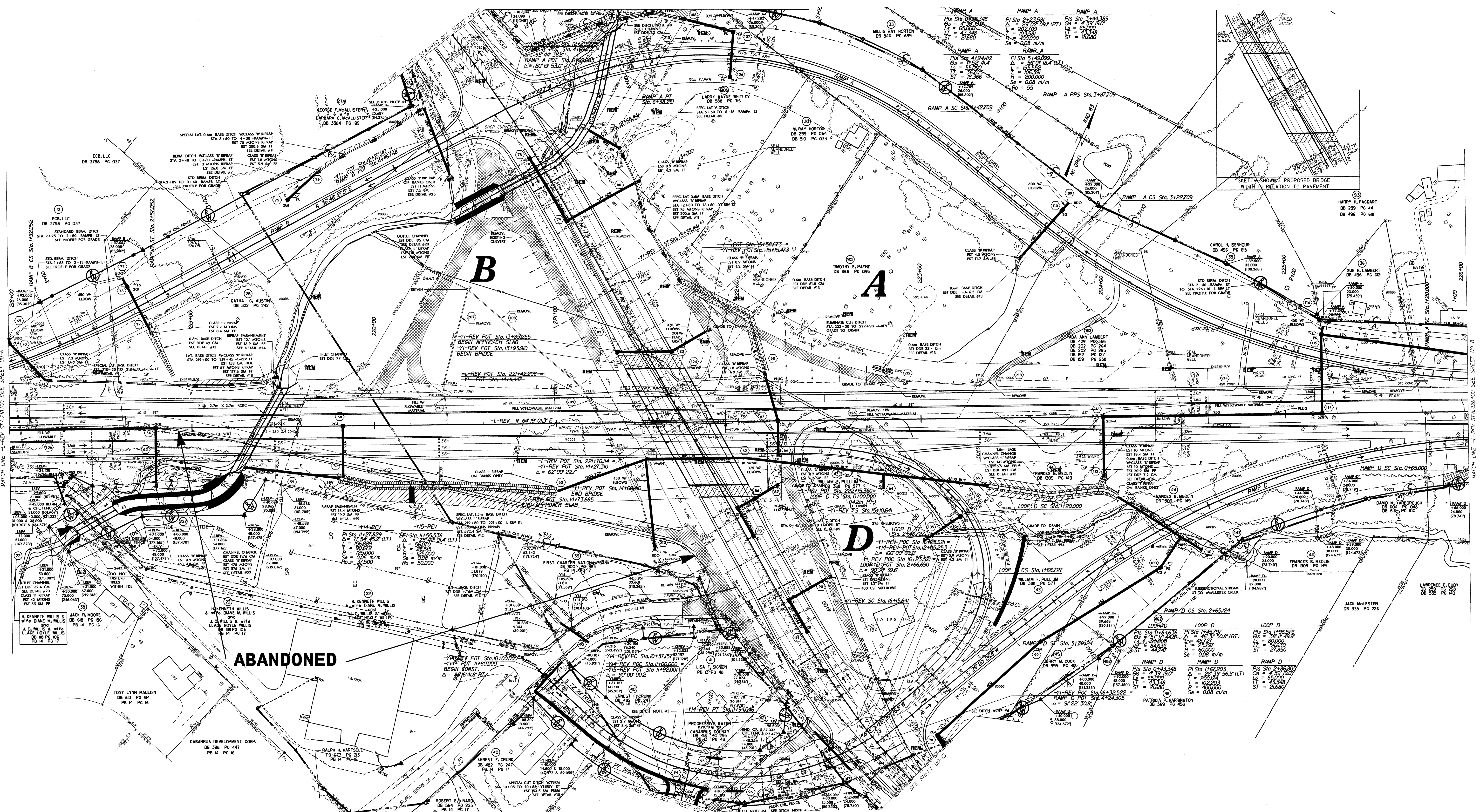
8/17/03



PROJECT REFERENCE NO. R-2533CC SHEET NO. U0-7

UTILITIES BY OTHERS

NOTE:
ALL PROPOSED UTILITY WORK
SHOWN ON THIS SHEET WILL
BE DONE BY OTHERS

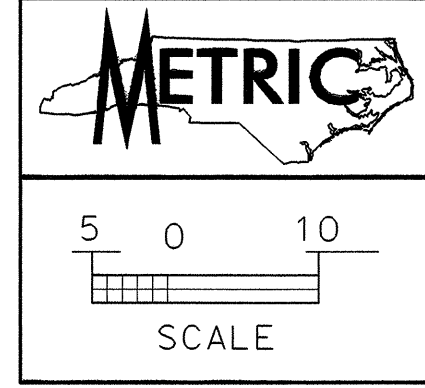


MATCH LINE -REV STA 28400 SEE SHEET U0-6

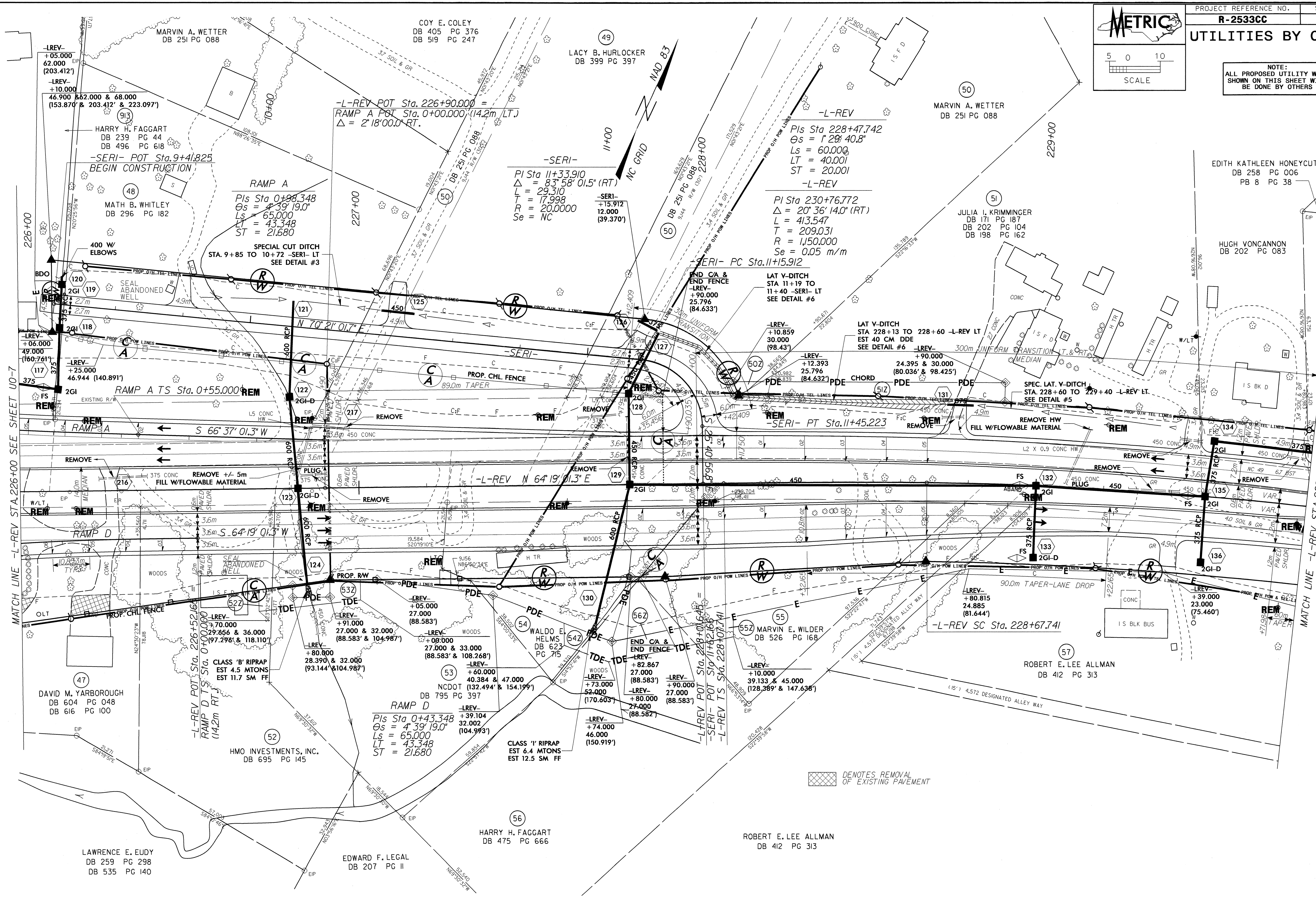
MATCH LINE -REV STA 22600 SEE SHEET U0-8

19-JAN-2011 13:56
R:\Utilities\2533CC\U0-7\U0-7.dwg
Moon_B1_00242454

UTILITIES BY OTHERS



NOTE:
ALL PROPOSED UTILITY WORK
SHOWN ON THIS SHEET WILL
BE DONE BY OTHERS



MATCH LINE - L-REV STA. 226+00 SEE SHEET U0-7

MATCH LINE - L-REV STA. 229+80 SEE SHEET U0-9

⊠ DENOTES REMOVAL OF EXISTING PAVEMENT

19:MAN:2011357
 20:JUL:11:11:11
 21:JUL:11:11:11
 22:JUL:11:11:11
 23:JUL:11:11:11
 24:JUL:11:11:11
 25:JUL:11:11:11
 26:JUL:11:11:11
 27:JUL:11:11:11
 28:JUL:11:11:11
 29:JUL:11:11:11
 30:JUL:11:11:11
 31:JUL:11:11:11
 32:JUL:11:11:11
 33:JUL:11:11:11
 34:JUL:11:11:11
 35:JUL:11:11:11
 36:JUL:11:11:11
 37:JUL:11:11:11
 38:JUL:11:11:11
 39:JUL:11:11:11
 40:JUL:11:11:11
 41:JUL:11:11:11
 42:JUL:11:11:11
 43:JUL:11:11:11
 44:JUL:11:11:11
 45:JUL:11:11:11
 46:JUL:11:11:11
 47:JUL:11:11:11
 48:JUL:11:11:11
 49:JUL:11:11:11
 50:JUL:11:11:11
 51:JUL:11:11:11
 52:JUL:11:11:11
 53:JUL:11:11:11
 54:JUL:11:11:11
 55:JUL:11:11:11
 56:JUL:11:11:11
 57:JUL:11:11:11
 58:JUL:11:11:11
 59:JUL:11:11:11
 60:JUL:11:11:11
 61:JUL:11:11:11
 62:JUL:11:11:11
 63:JUL:11:11:11
 64:JUL:11:11:11
 65:JUL:11:11:11
 66:JUL:11:11:11
 67:JUL:11:11:11
 68:JUL:11:11:11
 69:JUL:11:11:11
 70:JUL:11:11:11
 71:JUL:11:11:11
 72:JUL:11:11:11
 73:JUL:11:11:11
 74:JUL:11:11:11
 75:JUL:11:11:11
 76:JUL:11:11:11
 77:JUL:11:11:11
 78:JUL:11:11:11
 79:JUL:11:11:11
 80:JUL:11:11:11
 81:JUL:11:11:11
 82:JUL:11:11:11
 83:JUL:11:11:11
 84:JUL:11:11:11
 85:JUL:11:11:11
 86:JUL:11:11:11
 87:JUL:11:11:11
 88:JUL:11:11:11
 89:JUL:11:11:11
 90:JUL:11:11:11
 91:JUL:11:11:11
 92:JUL:11:11:11
 93:JUL:11:11:11
 94:JUL:11:11:11
 95:JUL:11:11:11
 96:JUL:11:11:11
 97:JUL:11:11:11
 98:JUL:11:11:11
 99:JUL:11:11:11
 100:JUL:11:11:11

LAWRENCE E. EUDY
DB 259 PG 298
DB 535 PG 140

EDWARD F. LEGAL
DB 207 PG 11

HARRY H. FAGGART
DB 475 PG 666

ROBERT E. LEE ALLMAN
DB 412 PG 313

ROBERT E. LEE ALLMAN
DB 412 PG 313

MARVIN E. WILDER
DB 526 PG 168

WALDO E. HELMS
DB 623 PG 715

RAMP D
Pls Sta 0+43.348
Os = 4° 39' 19.0"
Ls = 65.000
LT = 43.348
ST = 21.680

L-REV POT Sta. 226+52.16
RAMP D T.S. Sta. 0+00.000
(14.2m RT.)

L-REV POT Sta. 226+52.16
RAMP D T.S. Sta. 0+00.000
(14.2m RT.)

DAVID M. YARBOROUGH
DB 604 PG 048
DB 616 PG 100

HMO INVESTMENTS, INC.
DB 695 PG 145

NCDOT (132.494' & 154.199')
DB 795 PG 397

L-REV POT Sta. 228+01.645
S-ERI POT Sta. 11+42.165
L-REV TS Sta. 228+07.741

L-REV SC Sta. 228+67.741

L-REV SC Sta. 228+67.741

L-REV POT Sta. 228+01.645
S-ERI POT Sta. 11+42.165
L-REV TS Sta. 228+07.741

L-REV POT Sta. 228+01.645
S-ERI POT Sta. 11+42.165
L-REV TS Sta. 228+07.741

L-REV POT Sta. 228+01.645
S-ERI POT Sta. 11+42.165
L-REV TS Sta. 228+07.741

L-REV POT Sta. 228+01.645
S-ERI POT Sta. 11+42.165
L-REV TS Sta. 228+07.741

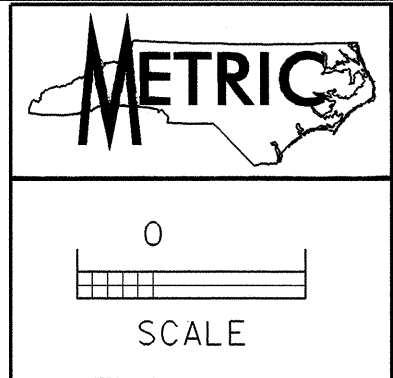
L-REV POT Sta. 228+01.645
S-ERI POT Sta. 11+42.165
L-REV TS Sta. 228+07.741

L-REV POT Sta. 228+01.645
S-ERI POT Sta. 11+42.165
L-REV TS Sta. 228+07.741

L-REV POT Sta. 228+01.645
S-ERI POT Sta. 11+42.165
L-REV TS Sta. 228+07.741

MATCH LINE - L-REV STA. 226+00 SEE SHEET U0-7

MATCH LINE - L-REV STA. 229+80 SEE SHEET U0-9



UTILITIES BY OTHERS

NOTE: ALL PROPOSED UTILITY WORK SHOWN ON THIS SHEET WILL BE DONE BY OTHERS

PI Sta 230+76.772
 $\Delta = 20^\circ 36' 14.0''$ (RT)
 $L = 413.547$
 $T = 209.031$
 $R = 1150.000$
 $Se = 0.05$ m/m

PIs Sta 233+01.289
 $\Theta_s = 1^\circ 29' 40.8''$
 $L_s = 60.000$
 $LT = 40.001$
 $ST = 20.001$

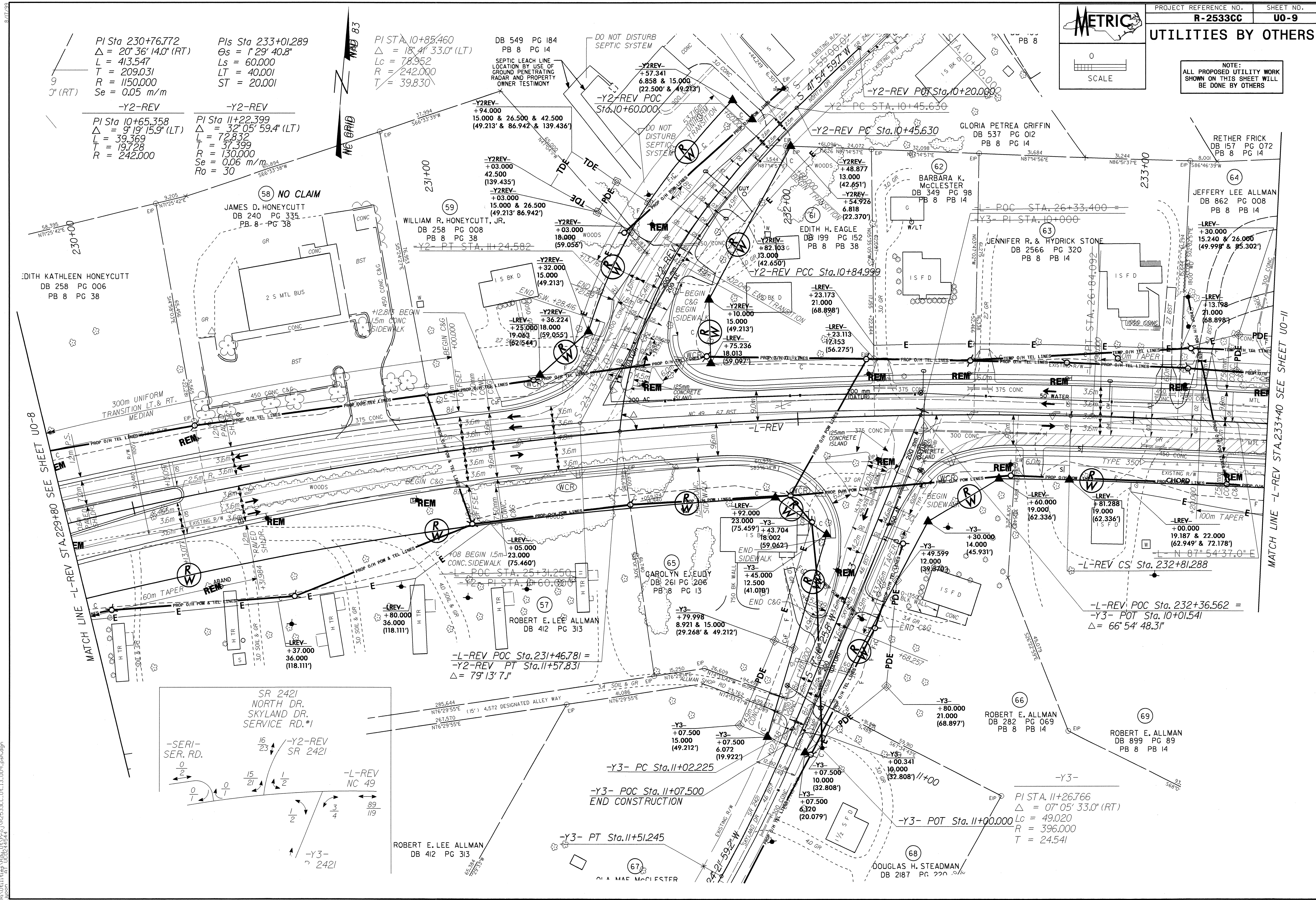
-Y2-REV
 PI Sta 10+65.358
 $\Delta = 9^\circ 19' 15.9''$ (LT)
 $L = 39.369$
 $T = 19.728$
 $R = 242.000$

-Y2-REV
 PI Sta 11+22.399
 $\Delta = 32^\circ 05' 59.4''$ (LT)
 $L = 72.832$
 $T = 37.399$
 $R = 130.000$
 $Se = 0.06$ m/m
 $Ro = 30$

PI STA. 10+85.460
 $\Delta = 18^\circ 41' 33.0''$ (LT)
 $Lc = 78.952$
 $R = 242.000$
 $T = 39.830$

DB 549 PG 184
 PB 8 PG 14

SEPTIC LEACH LINE
 LOCATION BY USE OF
 GROUND PENETRATING
 RADAR AND PROPERTY
 OWNER TESTIMONY



EDITH KATHLEEN HONEYCUTT
 DB 258 PG 006
 PB 8 PG 38

(58) NO CLAIM
 JAMES D. HONEYCUTT
 DB 240 PG 335
 PB 8 PG 38

(59)
 WILLIAM R. HONEYCUTT, JR.
 DB 258 PG 008
 PB 8 PG 38

-Y2REV-
 +03.000
 15.000
 (49.213)

-Y2REV-
 +03.000
 18.000
 (59.056)

-Y2REV-
 +10.000
 15.000
 (49.213)

-LREV-
 +23.173
 21.000
 (68.898)

-LREV-
 +23.113
 17.153
 (56.275)

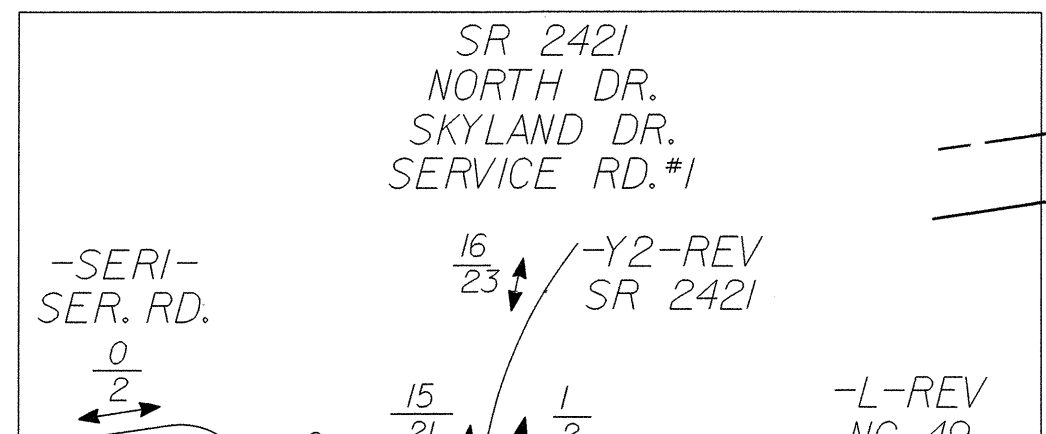
-LREV-
 +13.198
 21.000
 (68.898)

-LREV-
 +30.000
 15.240 & 26.000
 (49.998 & 85.302)

300m UNIFORM
 TRANSITION LT. & RT.
 MEDIAN

MATCH LINE -L-REV STA. 229+80 SEE SHEET UO-8

MATCH LINE -L-REV STA. 233+40 SEE SHEET UO-11



-L-REV POC Sta. 231+46.781 =
 -Y2-REV PT Sta. 11+57.831
 $\Delta = 79^\circ 13' 7.1''$

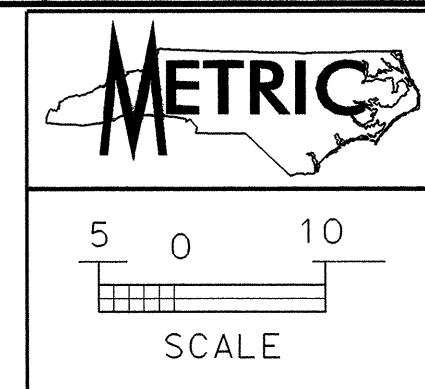
-Y3- PC Sta. 11+02.225
 END CONSTRUCTION

-Y3- POC Sta. 11+07.500

-Y3- PT Sta. 11+51.245

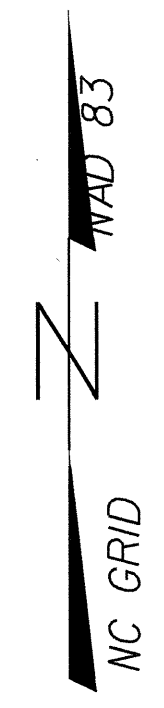
-Y3- POT Sta. 11+00.000

PI STA. 11+26.766
 $\Delta = 07^\circ 05' 33.0''$ (RT)
 $Lc = 49.020$
 $R = 396.000$
 $T = 24.541$



UTILITIES BY OTHERS

NOTE:
ALL PROPOSED UTILITY WORK
SHOWN ON THIS SHEET WILL
BE DONE BY OTHERS



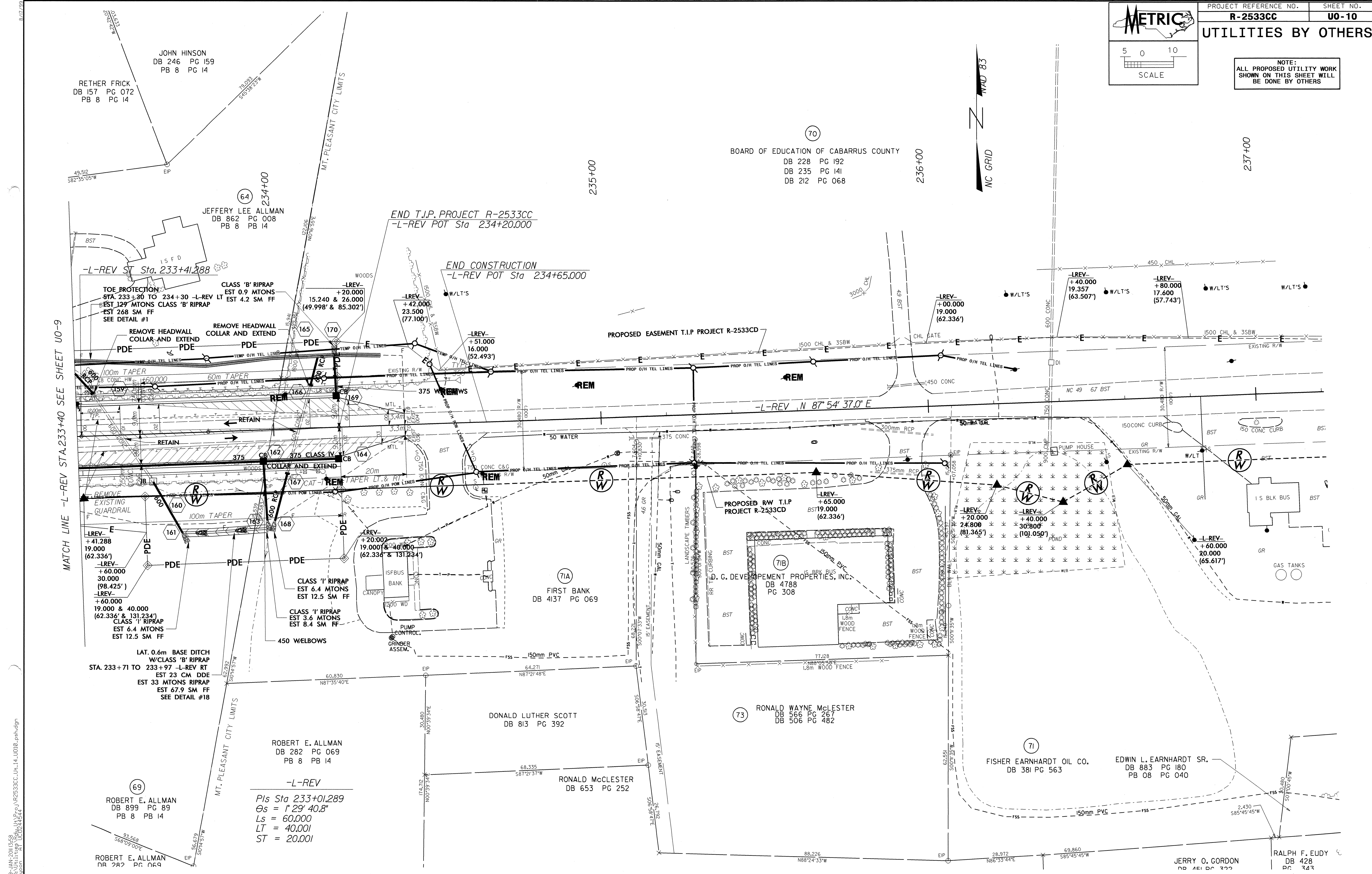
(70)
BOARD OF EDUCATION OF CABARRUS COUNTY
DB 228 PG 192
DB 235 PG 141
DB 212 PG 068

237+00

235+00

236+00

MATCH LINE -L-REV STA. 233+40 SEE SHEET U0-9



9-MAY-2011 10:59 AM P:\PJ\2533CC\14-1010-eph.dgn

ROBERT E. ALLMAN
DB 282 PG 069
PB 8 PB 14

-L-REV
Pls Sta 233+01.289
Os = 1' 29" 40.8"
Ls = 60.000
LT = 40.001
ST = 20.001

(69)
ROBERT E. ALLMAN
DB 899 PG 89
PB 8 PB 14

ROBERT E. ALLMAN
DB 282 PG 069

DONALD LUTHER SCOTT
DB 813 PG 392

RONALD McCLESTER
DB 653 PG 252

(73) RONALD WAYNE McCLESTER
DB 566 PG 267
DB 506 PG 482

(71) FISHER EARNHARDT OIL CO.
DB 381 PG 563

EDWIN L. EARNHARDT SR.
DB 883 PG 180
PB 08 PG 040

JERRY O. GORDON
DB 451 PG 322

RALPH F. EUDY
DB 428 PG 343

(71A) FIRST BANK
DB 4137 PG 069

(71B) D. G. DEVELOPMENT PROPERTIES, INC.
DB 4788 PG 308

JOHN HINSON
DB 246 PG 159
PB 8 PG 14

RETHER FRICK
DB 157 PG 072
PB 8 PG 14

(64) JEFFERY LEE ALLMAN
DB 862 PG 008
PB 8 PB 14

END T.I.P. PROJECT R-2533CC
-L-REV POT Sta 234+20.000

END CONSTRUCTION
-L-REV POT Sta 234+65.000

PROPOSED EASEMENT T.I.P. PROJECT R-2533CD

-L-REV N 87° 54' 37.0" E

PROPOSED RW T.I.P. PROJECT R-2533CD

LAT. 0.6m BASE DITCH
W/CLASS 'B' RIPRAP
STA. 233+71 TO 233+97 -L-REV RT
EST 23 CM DDE
EST 33 MTONS RIPRAP
EST 67.9 SM FF
SEE DETAIL #18

CLASS 'I' RIPRAP
EST 6.4 MTONS
EST 12.5 SM FF

CLASS 'I' RIPRAP
EST 3.6 MTONS
EST 8.4 SM FF

MT. PLEASANT CITY LIMITS

-L-REV-
+20.000
15.240 & 24.000
(49.998' & 85.302')

-L-REV-
+42.000
23.500
(77.100')

-L-REV-
+51.000
16.000
(52.493')

-L-REV-
+00.000
19.000
(62.336')

-L-REV-
+40.000
19.357
(63.507')

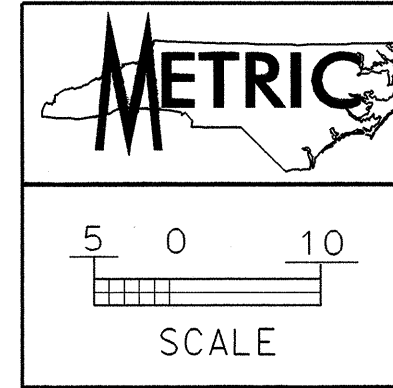
-L-REV-
+80.000
17.600
(57.743')

-L-REV-
+65.000
19.000
(62.336')

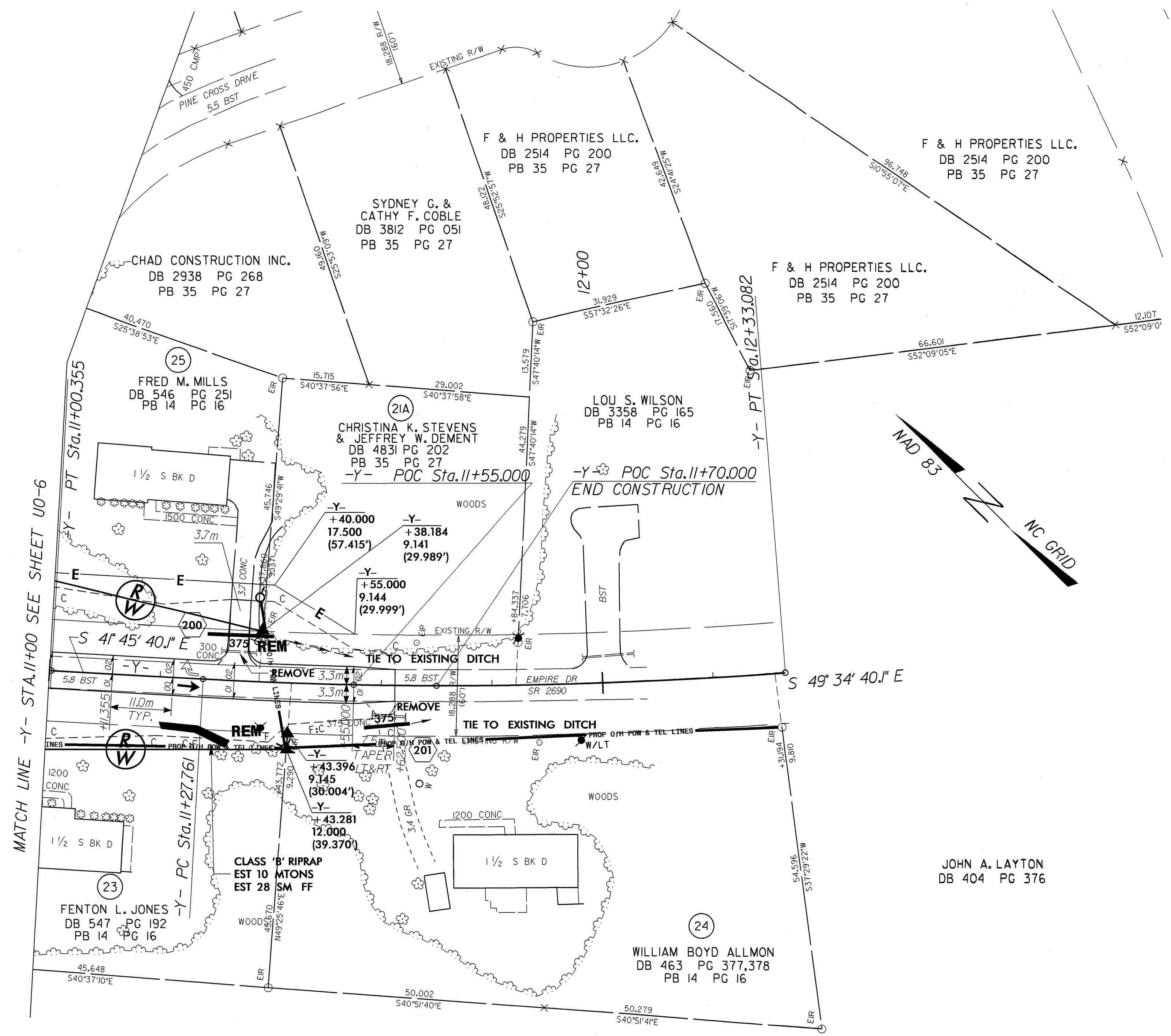
-L-REV-
+20.000
24.800
(81.365')

-L-REV-
+40.000
30.800
(101.050')

-L-REV-
+60.000
20.000
(65.617')



NOTE:
ALL PROPOSED UTILITY WORK
SHOWN ON THIS SHEET WILL
BE DONE BY OTHERS



MATCH LINE -Y- STA. 11+00 SEE SHEET U0-6

JOHN RAY NOBLES, JR.
DB 521 PG 561

JOHN A. LAYTON
DB 404 PG 376

8/17/2011 10:59 AM C:\Users\jray\Documents\Projects\2533CC\U0-11.dwg

