

- INDEX OF SHEETS**
1. Title Page
 2. Typical Cross Section of Improvement
 3. Plans and Profile
 4. Detail of Street Intersections
 - 5-6. Cross-sections
 7. Headwall standard #M-7139
 8. Drop inlet, E.D.I. Standard #200
 9. Detail of man hole
 - 10-11. Detail of piled roadway
 12. Detail of special archbasins and pipe supports.

STATE OF NORTH CAROLINA
 STATE HIGHWAY AND PUBLIC WORKS COMMISSION
 PLAN AND PROFILE OF PROPOSED
 STATE HIGHWAY

Pasquotank 19

PASQUOTANK COUNTY

IMPROVEMENT ON ELIZABETH STREET IN ELIZABETH CITY,
 Beginning at Sta. 0+00.00 at the center of Elizabeth St., at
 the end of the paved return of the Main St. intersection, and
 running along Elizabeth St. in a westerly direction to its intersection
 with Road St., Sta. 14+28.00 End of the Project.

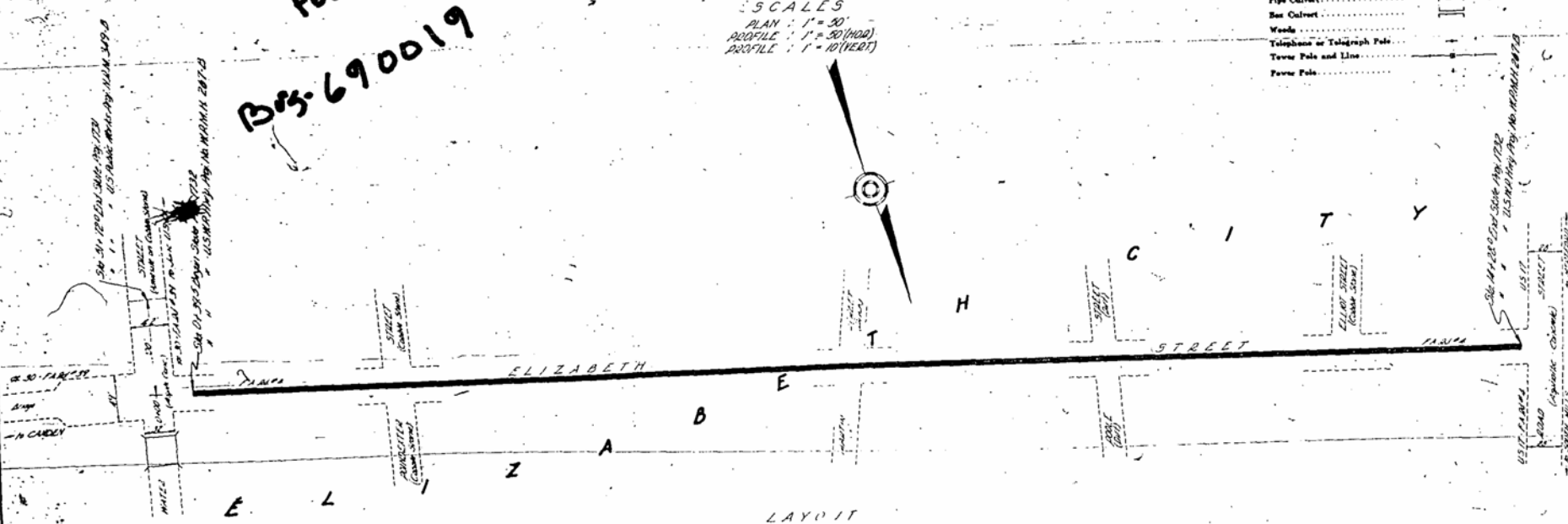
SCALES
 PLAN : 1" = 30'
 PROFILE : 1" = 30' (H.D.)
 PROFILE : 1" = 10' (VERT.)

CONVENTIONAL SIGNS

County Line
Township Line
City or Town Line
Right of Way Line
Survey Line
Property Line
Wire Fence
Board Fence
Present Traveled Road
Railroad
Grade Elevation
Ground Elevation
Pipe Culvert
Box Culvert
Woods
Telephone or Telegraph Pole
Tower Pole and Line
Power Pole

SHIPPING POINT
 ELIZABETH CITY

Roll 319
 Post. 12
 Box-690019



LAYOUT
 SCALE 1" = 30'
 LENGTH USHW/HTY, PROJ. NO. W.P.M.H. 287-B-0.203 MI.

Prepared in Office of
 STATE HIGHWAY AND PUBLIC WORKS COMMISSION
 RALEIGH, N. C.

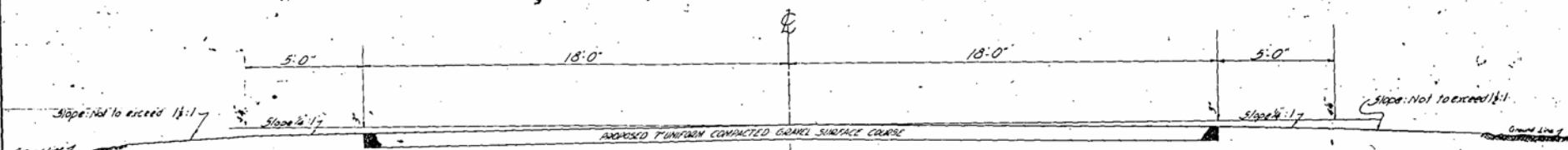
Surveyed by: [Signature]
 Drawn by: [Signature]
 Date: 01/21/15

State Standard Specifications, 1974 Edition, Part 101, Section 101.02
 Approved by Bureau Control

APPROVED: [Signature]
 STATE HIGHWAY ENGINEER
 RECOMMENDED FOR APPROVAL: [Signature]
 DIST. ENGR. SUPERVISOR
 RECOMMENDED FOR APPROVAL: [Signature]
 DIST. ENGR. SUPERVISOR
 APPROVED: [Signature]
 DIST. ENGR. SUPERVISOR

STATE	DIST.	FILE	FISCAL YEAR	SHEET NO.	TOTAL SHEETS
N.C.		1732		7	16

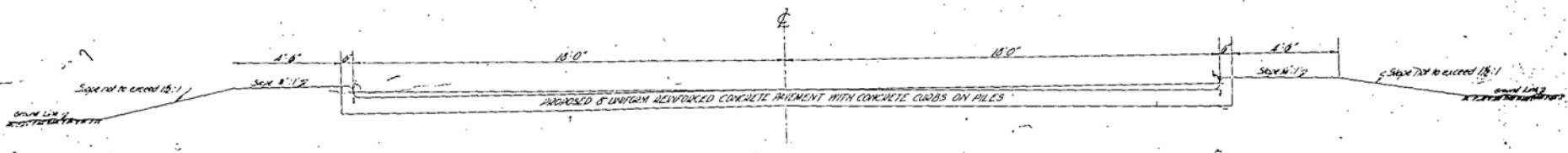
U.S. H.W. DEPT. PROJ. NO. NC-10-11-20-1



TYPICAL SECTION
PROPOSED T UNIFORM COMPACTED GRAVEL SURFACE COURSE

CROSS-SECTIONAL AREA = 21,000 sq ft
SCALE: 1/4" = 1'

NOTE: The above section to be used from
Sta. 51+01 to Sta. 44+28



SPECIAL SECTION WITH PILES OMITTED
FOR DETAILS OF PAVEMENT AND PILES SEE SHEET NO 10-11
SCALE: 1/4" = 1'

NOTE: The above section to be used from
Sta. 0A395 to Sta. 51+01

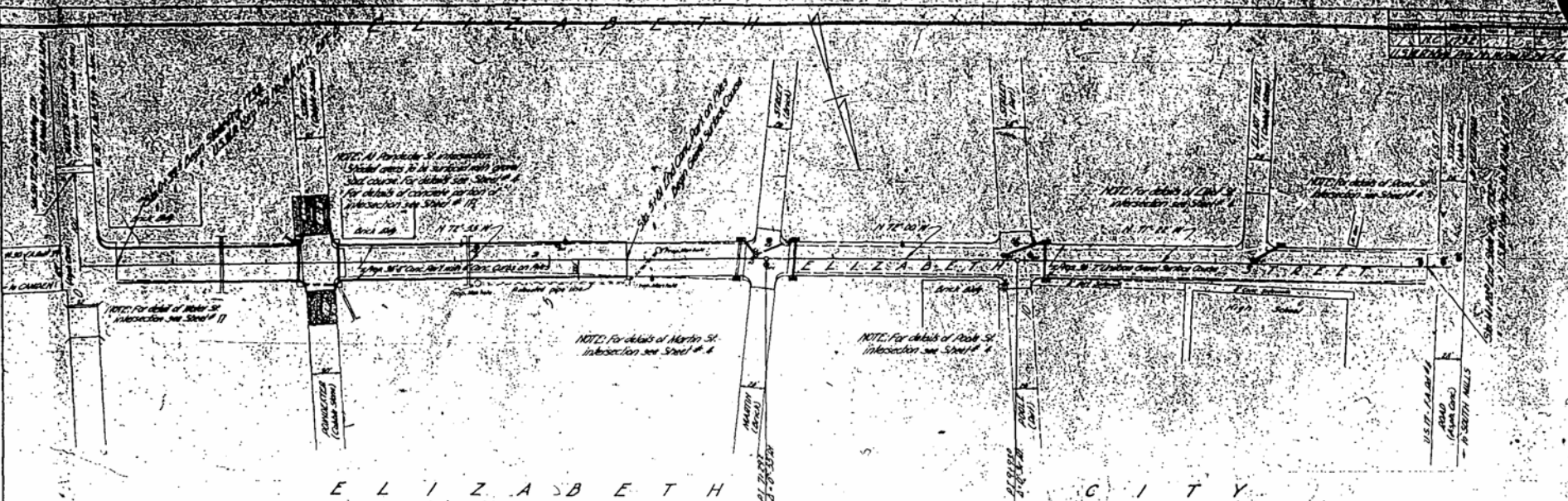
STATE OF NORTH CAROLINA
STATE HIGHWAY AND PUBLIC WORKS COMMISSION
RALEIGH, N. C.

**SPECIAL SECTIONS
FOR USE ON
STATE PROJECT 1732**

Drawn by: *J. L. Mason* Date: *10-1-54*
Checked by: *J. L. Mason* Office of Highway Planning Engineers, Raleigh, N. C.
Approved by: *J. L. Mason*
Approved by: *J. L. Mason*

NO. 1	CONCRETE
NO. 2	GRAVEL
NO. 3	BRICK
NO. 4	PLASTER
NO. 5	PAINT
NO. 6	GLASS
NO. 7	IRON
NO. 8	COPPER
NO. 9	ZINC
NO. 10	LEAD
NO. 11	SILVER
NO. 12	GOLD
NO. 13	DIAMOND
NO. 14	JEWELRY
NO. 15	TEXTILES
NO. 16	WOOD
NO. 17	STONE
NO. 18	CLAY
NO. 19	GLASS
NO. 20	IRON
NO. 21	COPPER
NO. 22	ZINC
NO. 23	LEAD
NO. 24	SILVER
NO. 25	GOLD
NO. 26	DIAMOND
NO. 27	JEWELRY
NO. 28	TEXTILES
NO. 29	WOOD
NO. 30	STONE
NO. 31	CLAY
NO. 32	GLASS
NO. 33	IRON
NO. 34	COPPER
NO. 35	ZINC
NO. 36	LEAD
NO. 37	SILVER
NO. 38	GOLD
NO. 39	DIAMOND
NO. 40	JEWELRY
NO. 41	TEXTILES
NO. 42	WOOD
NO. 43	STONE
NO. 44	CLAY
NO. 45	GLASS
NO. 46	IRON
NO. 47	COPPER
NO. 48	ZINC
NO. 49	LEAD
NO. 50	SILVER
NO. 51	GOLD
NO. 52	DIAMOND
NO. 53	JEWELRY
NO. 54	TEXTILES
NO. 55	WOOD
NO. 56	STONE
NO. 57	CLAY
NO. 58	GLASS
NO. 59	IRON
NO. 60	COPPER
NO. 61	ZINC
NO. 62	LEAD
NO. 63	SILVER
NO. 64	GOLD
NO. 65	DIAMOND
NO. 66	JEWELRY
NO. 67	TEXTILES
NO. 68	WOOD
NO. 69	STONE
NO. 70	CLAY
NO. 71	GLASS
NO. 72	IRON
NO. 73	COPPER
NO. 74	ZINC
NO. 75	LEAD
NO. 76	SILVER
NO. 77	GOLD
NO. 78	DIAMOND
NO. 79	JEWELRY
NO. 80	TEXTILES
NO. 81	WOOD
NO. 82	STONE
NO. 83	CLAY
NO. 84	GLASS
NO. 85	IRON
NO. 86	COPPER
NO. 87	ZINC
NO. 88	LEAD
NO. 89	SILVER
NO. 90	GOLD
NO. 91	DIAMOND
NO. 92	JEWELRY
NO. 93	TEXTILES
NO. 94	WOOD
NO. 95	STONE
NO. 96	CLAY
NO. 97	GLASS
NO. 98	IRON
NO. 99	COPPER
NO. 100	ZINC

NO. 1	CONCRETE
NO. 2	GRAVEL
NO. 3	BRICK
NO. 4	PLASTER
NO. 5	PAINT
NO. 6	GLASS
NO. 7	IRON
NO. 8	COPPER
NO. 9	ZINC
NO. 10	LEAD
NO. 11	SILVER
NO. 12	GOLD
NO. 13	DIAMOND
NO. 14	JEWELRY
NO. 15	TEXTILES
NO. 16	WOOD
NO. 17	STONE
NO. 18	CLAY
NO. 19	GLASS
NO. 20	IRON
NO. 21	COPPER
NO. 22	ZINC
NO. 23	LEAD
NO. 24	SILVER
NO. 25	GOLD
NO. 26	DIAMOND
NO. 27	JEWELRY
NO. 28	TEXTILES
NO. 29	WOOD
NO. 30	STONE
NO. 31	CLAY
NO. 32	GLASS
NO. 33	IRON
NO. 34	COPPER
NO. 35	ZINC
NO. 36	LEAD
NO. 37	SILVER
NO. 38	GOLD
NO. 39	DIAMOND
NO. 40	JEWELRY
NO. 41	TEXTILES
NO. 42	WOOD
NO. 43	STONE
NO. 44	CLAY
NO. 45	GLASS
NO. 46	IRON
NO. 47	COPPER
NO. 48	ZINC
NO. 49	LEAD
NO. 50	SILVER
NO. 51	GOLD
NO. 52	DIAMOND
NO. 53	JEWELRY
NO. 54	TEXTILES
NO. 55	WOOD
NO. 56	STONE
NO. 57	CLAY
NO. 58	GLASS
NO. 59	IRON
NO. 60	COPPER
NO. 61	ZINC
NO. 62	LEAD
NO. 63	SILVER
NO. 64	GOLD
NO. 65	DIAMOND
NO. 66	JEWELRY
NO. 67	TEXTILES
NO. 68	WOOD
NO. 69	STONE
NO. 70	CLAY
NO. 71	GLASS
NO. 72	IRON
NO. 73	COPPER
NO. 74	ZINC
NO. 75	LEAD
NO. 76	SILVER
NO. 77	GOLD
NO. 78	DIAMOND
NO. 79	JEWELRY
NO. 80	TEXTILES
NO. 81	WOOD
NO. 82	STONE
NO. 83	CLAY
NO. 84	GLASS
NO. 85	IRON
NO. 86	COPPER
NO. 87	ZINC
NO. 88	LEAD
NO. 89	SILVER
NO. 90	GOLD
NO. 91	DIAMOND
NO. 92	JEWELRY
NO. 93	TEXTILES
NO. 94	WOOD
NO. 95	STONE
NO. 96	CLAY
NO. 97	GLASS
NO. 98	IRON
NO. 99	COPPER
NO. 100	ZINC



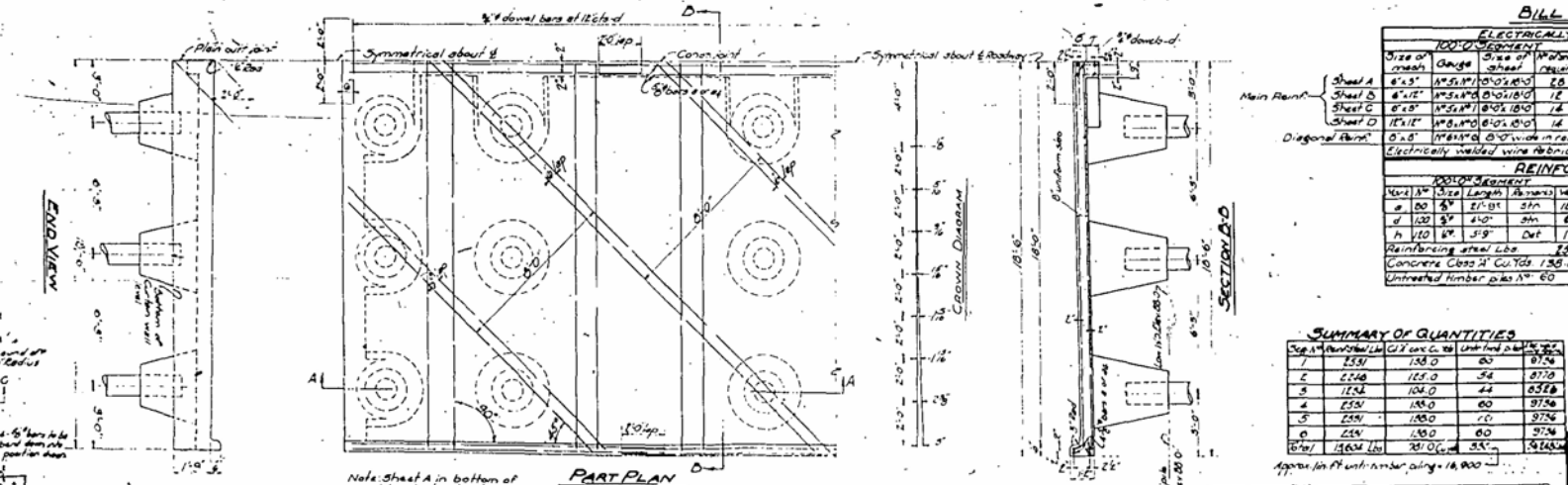
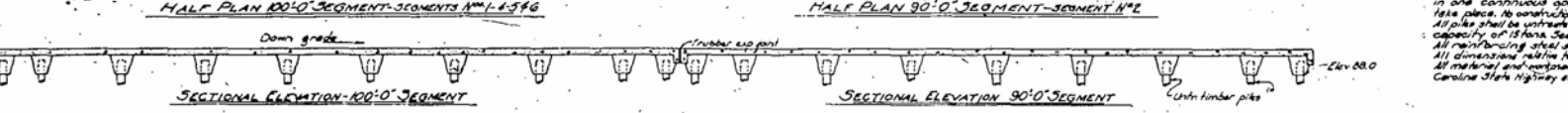
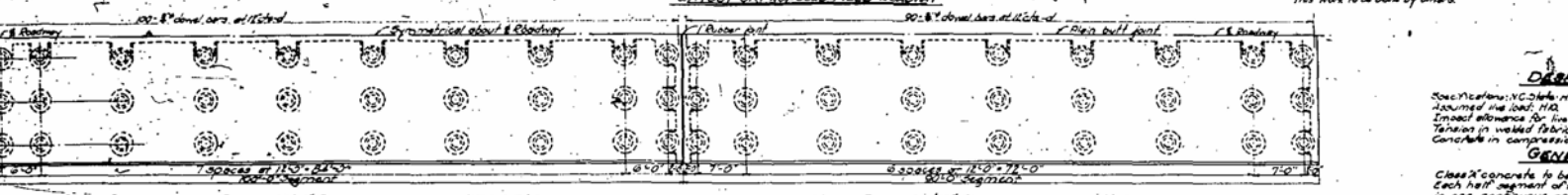
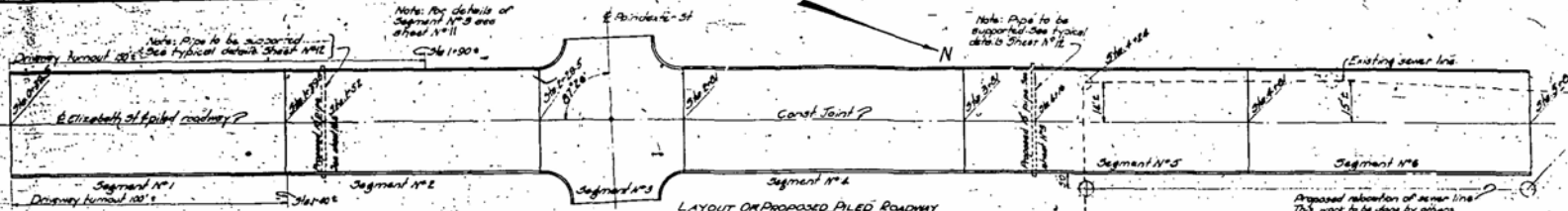
E L I Z A B E T H C I T Y

<p>B.M. 2614 72.45 Spoke Cut on Corner Concrete 25' 11" 508 01.92</p> <p>NOTE: (Leave for street) double Sewer. The Brick L pipe shall extend the grade of the roadway and ending at the property, if necessary to make water in to each building. See Sheet # 4 for general notes.</p>	<p>NOTE: All concrete & masonry work shall be in accordance with Standard Specs. for detail see Sheet # 4 For details of concrete part of intersection see Sheet # 17</p>	<p>NOTE: For details of Water St. Intersection see Sheet # 4</p>	<p>NOTE: For details of North St. Intersection see Sheet # 4</p>	<p>NOTE: For details of Park St. Intersection see Sheet # 4</p>	<p>NOTE: For details of Park St. Intersection see Sheet # 4</p>	<p>B.M. 2614 72.45 Spoke Cut on Corner Concrete 25' 11" 508 01.92</p>
<p>NOTE: (Leave for street) double Sewer. The Brick L pipe shall extend the grade of the roadway and ending at the property, if necessary to make water in to each building. See Sheet # 4 for general notes.</p>	<p>NOTE: All concrete & masonry work shall be in accordance with Standard Specs. for detail see Sheet # 4 For details of concrete part of intersection see Sheet # 17</p>	<p>NOTE: For details of Water St. Intersection see Sheet # 4</p>	<p>NOTE: For details of North St. Intersection see Sheet # 4</p>	<p>NOTE: For details of Park St. Intersection see Sheet # 4</p>	<p>NOTE: For details of Park St. Intersection see Sheet # 4</p>	<p>B.M. 2614 72.45 Spoke Cut on Corner Concrete 25' 11" 508 01.92</p>
<p>NOTE: (Leave for street) double Sewer. The Brick L pipe shall extend the grade of the roadway and ending at the property, if necessary to make water in to each building. See Sheet # 4 for general notes.</p>	<p>NOTE: All concrete & masonry work shall be in accordance with Standard Specs. for detail see Sheet # 4 For details of concrete part of intersection see Sheet # 17</p>	<p>NOTE: For details of Water St. Intersection see Sheet # 4</p>	<p>NOTE: For details of North St. Intersection see Sheet # 4</p>	<p>NOTE: For details of Park St. Intersection see Sheet # 4</p>	<p>NOTE: For details of Park St. Intersection see Sheet # 4</p>	<p>B.M. 2614 72.45 Spoke Cut on Corner Concrete 25' 11" 508 01.92</p>
<p>NOTE: (Leave for street) double Sewer. The Brick L pipe shall extend the grade of the roadway and ending at the property, if necessary to make water in to each building. See Sheet # 4 for general notes.</p>	<p>NOTE: All concrete & masonry work shall be in accordance with Standard Specs. for detail see Sheet # 4 For details of concrete part of intersection see Sheet # 17</p>	<p>NOTE: For details of Water St. Intersection see Sheet # 4</p>	<p>NOTE: For details of North St. Intersection see Sheet # 4</p>	<p>NOTE: For details of Park St. Intersection see Sheet # 4</p>	<p>NOTE: For details of Park St. Intersection see Sheet # 4</p>	<p>B.M. 2614 72.45 Spoke Cut on Corner Concrete 25' 11" 508 01.92</p>

City of Elizabeth
City Engineer
Barren

DATE	NO.	REV.	BY	DATE
10	M.C.	1732	10	5

US Highway Proj. No. 1732-N-237-D



DESIGN DATA
 Specifications: N.C. State Highway and Public Works Commission. Assume the load, 110.
 Impact allowance for live load: None.
 Tension in welded fabric steel: 29,000 Lbs. per sq. inch.
 Concrete in compression: 1,800 Lbs. per sq. inch.

GENERAL NOTES
 Class "A" concrete to be used throughout. Max. size coarse aggregate, 1 1/2". Each half segment of the pavement including pile caps shall be poured in one continuous operation, allowing no time for initial set to take place. No construction joints will be permitted except as shown on plans. All pile caps shall be uniformly finished and be driven to a minimum bearing capacity of 15 tons. See "Special Provisions".
 All reinforcing steel shall be delivered bars.
 All construction relative to reinforcement are in carbon of bars.
 All material and workmanship as per specifications of The North Carolina State Highway and Public Works Commission.

BILL OF MATERIAL

ELECTRICALLY WELDED WIRE FABRIC					
100'-0" SEGMENT	Size of mesh		100'-0" SEGMENT	Size of mesh	
Area	Length	Weight	Area	Length	Weight
Sheet A	6' x 5'	175.0	Sheet B	6' x 5'	175.0
Sheet C	6' x 5'	175.0	Sheet D	6' x 5'	175.0
Diagonal Bars	0.5"	110.0	Diagonal Bars	0.5"	110.0
Electrically welded wire fabric	175.0	175.0	Electrically welded wire fabric	175.0	175.0

REINFORCING STEEL					
100'-0" SEGMENT	Size		100'-0" SEGMENT	Size	
Area	Length	Weight	Area	Length	Weight
Sheet A	6' x 5'	175.0	Sheet B	6' x 5'	175.0
Sheet C	6' x 5'	175.0	Sheet D	6' x 5'	175.0
Diagonal Bars	0.5"	110.0	Diagonal Bars	0.5"	110.0
Reinforcing steel	175.0	175.0	Reinforcing steel	175.0	175.0

SUMMARY OF QUANTITIES

Item	Quantity	Unit	Price	Total
1	175.0	sq. ft.	0.50	87.50
2	175.0	sq. ft.	0.50	87.50
3	175.0	sq. ft.	0.50	87.50
4	175.0	sq. ft.	0.50	87.50
5	175.0	sq. ft.	0.50	87.50
6	175.0	sq. ft.	0.50	87.50
7	175.0	sq. ft.	0.50	87.50
8	175.0	sq. ft.	0.50	87.50
9	175.0	sq. ft.	0.50	87.50
10	175.0	sq. ft.	0.50	87.50

PROJECT NO. 1732
 PASQUOTANK COUNTY

STATE OF NORTH CAROLINA
 STATE HIGHWAY AND PUBLIC WORKS COMMISSION

SPECIAL
 DETAILS OF PILED ROADWAY
 FOR ELIZABETH STREET IN
 ELIZABETH CITY
 NOVEMBER 1935

SPECIAL

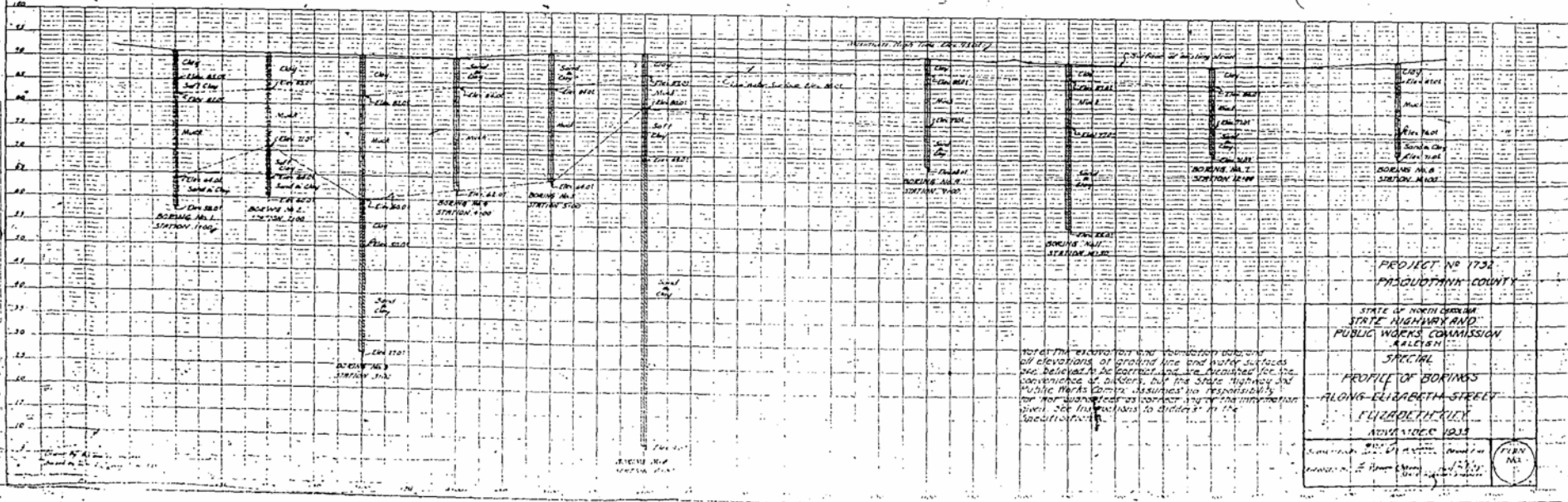
1	175.0	sq. ft.	0.50	87.50
2	175.0	sq. ft.	0.50	87.50
3	175.0	sq. ft.	0.50	87.50
4	175.0	sq. ft.	0.50	87.50
5	175.0	sq. ft.	0.50	87.50
6	175.0	sq. ft.	0.50	87.50
7	175.0	sq. ft.	0.50	87.50
8	175.0	sq. ft.	0.50	87.50
9	175.0	sq. ft.	0.50	87.50
10	175.0	sq. ft.	0.50	87.50

PLAN NO.

STATE	FILE NO.	PROJECT	SHEET	TOTAL SHEETS
NC	1732		10	10

ALSO SEE Highway Design on PAGES 10-11

NO.	DESCRIPTION	DATE
1	PLAN	
2	PROFILE	
3	SECTION	
4	DETAILS	
5	CONSTRUCTION	
6	ASPHALT	
7	CONCRETE	
8	PAVEMENT	
9	GRAVEL	
10	BASE	
11	SUBGRADE	
12	FINISH	
13	PROPOSED	
14	EXISTING	
15	ADJUSTED	
16	GRADE	
17	PROPOSED	
18	EXISTING	
19	ADJUSTED	
20	GRADE	



PROJECT NO 1732
PASQUOTANK COUNTY

STATE OF NORTH CAROLINA
STATE HIGHWAY AND
PUBLIC WORKS COMMISSION
RALEIGH

SPECIAL
PROFILE OF BORWINGS
ALONG ELIZABETH STREET
ELIZABETH TOWNSHIP
APRIL 10, 1933

W. H. HARRIS, District Engineer
J. H. HARRIS, District Engineer
J. H. HARRIS, District Engineer

THOMAS HALL

SUMMARY OF FINAL QUANTITIES

	SHEET NO.	DRAINAGE DITCH EXC.	UNCLASSIFIED EXCAVATION	BOTTOM EXC.	CLASS 'A' CLAY BRICK SURFACING	18" R.C. PIPE	BRICK MANHOLES	CONCRETE INLETS	CONCRETE HEAD WALLS	REMOVAL & RESET CURBING	STRAIGHT STONE CURBING	CURVED STONE CURBING	CLASS 'B' CONCRETE	REINFORCING STEEL	METAL MESH STEEL	UNTREATED TIMBER PILES	UNTREATED STRUCTURAL TIMBER
DRAINAGE EXCAVATION	28	31.6															
UNCLASSIFIED EXCAVATION	27-28		88.4														
BOTTOM EXCAVATION	27-28			2554.6													
CLASS 'A' CLAY BRICK SURFACING	27				66,431												
	28				756,184												
18" R.C. PIPE	27					297											
	28					243											
BRICK MANHOLES	28					NONE											
CONCRETE INLETS	28						4.691							182.0			
CONCRETE HEAD WALLS	27							1.98									
REMOVAL & RESET CURBING	27								201.3								
	28								190.7								
STRAIGHT STONE CURBING	27-28									NONE							
CURVED STONE CURBING	28										122.53						
CLASS 'A' CONC. OPEN BRICKS	27											5.5	696.0				
CLASS 'A' CONC. MASONRY	27											3,525					
CLASS 'A' CONC. PAVEMENT	27											781.0	13608.0	56248.0			
UNTREATED TIMBER PILES	27															18806.8	
UNTREATED STRUCTURAL TIMBER	27																2.4
GRAND TOTALS		31.6	88.4	2554.6	822,615	540	NONE	4.691	1.98	392.0	NONE	122.53	790,025	14482.0	56248.0	18806.8	2.4

See Sheet No. 30 for Final Estimate

Computed by: C. P. Vincent Date: 8-2-34
 Checked by: E. H. Brouse Date: 8-5-34
 Resident Engineer

- THE FINAL ESTIMATE -
(PROJ. NO. 1732)

DATE: 10-30-56
BY: M. J. B.

Sheet # 310
Post 19
P/O P/O

STRUCTURES - STA. 0+39.5 TO 5+81.4

SEE SHEET NO.	AMOUNT	UNIT	ITEMS	CONTRACT UNIT PRICE	TOTAL AMOUNT
29	10.3	CYD'S	UNCLASSIFIED EXCAVATION	51	515
29	1207.5	"	BOTTOM EXCAVATION	10	772.50
29	66.431	"	CLASS 'B' CLAY GRANUL. SUR.	5.00	332.16
29	291	LIN. FT.	18" R.C. PIPE	1.60	475.20
29	7.98	CYD'S	CONCRETE HEAD WALLS	25.00	49.50
29	201.3	LIN. FT.	REMOVAL & RESET CURB	50	100.65
29	190.025	CYD'S	CLASS 'B' CONCRETE	14.00	11060.35
29	14300	LBS	REINFORCING STEEL	04	572.00
29	56248	"	METAL MESH STEEL	07	3937.36
29	18806.8	LIN. FT.	UNTREATED TIMBER PILES	60	11284.08
29	2.4	MEAS	UNTREATED STR. TIMBER	50.00	120.00
TOTAL AMOUNT OF FINAL ESTIMATE FOR STRUCTURES					\$ 28700.95

ROADWAY - STA. 5+81.4 TO 7+20.4

29	31.6	CYD'S	DEBRIS EXCAVATION	50	1580
29	78.1	"	UNCLASSIFIED EXCAVATION	50	3905
29	1267.1	"	BOTTOM EXCAVATION	60	760.26
29	756.184	"	CLASS 'B' CLAY GRANUL.	5.00	3780.92
29	243	LIN. FT.	18" R.C. PIPE	1.60	388.80
29	NONE	EACH	BRICK MANHOLES	50.00	NONE
29	4.691	CYD'S	CONCRETE INLETS	25.00	117.28
29	190.7	LIN. FT.	REMOVAL AND RESET CURB	50	95.35
29	1046	"	STRAIGHT STONE CURB	1.00	NONE
29	122.53	"	CURVED STONE CURB	1.25	153.16
29	182	LBS	REINFORCING STEEL	04	728
TOTAL AMOUNT OF FINAL ESTIMATE FOR ROADWAY					\$ 5357.90
TOTAL AMOUNT OF FINAL ESTIMATE FOR ROADWAY AND STRUCTURES					\$ 34066.85
LESS PREVIOUS PAYMENTS (ESTS. NO. 1 TO 4 INC.)					\$ 30782.31
BALANCE NUMBER 5					\$ 3284.54
REDUCTION FOR 5 DAYS MARK-HOURS AT 0.25 PER HOUR					\$ 1254.38
AMOUNT DUE ON FINAL ESTIMATE					\$ 2030.16

I hereby certify that I have checked this estimate and that it is true and correct according to my best knowledge and belief.

Signed: *[Signature]* Date 8-6-56
Resident Engineer

I hereby certify that I have examined this estimate in detail and that it is true and correct according to my best knowledge and belief.

Signed: *[Signature]* Date 1-1-57
Chief Inspection Engineer

