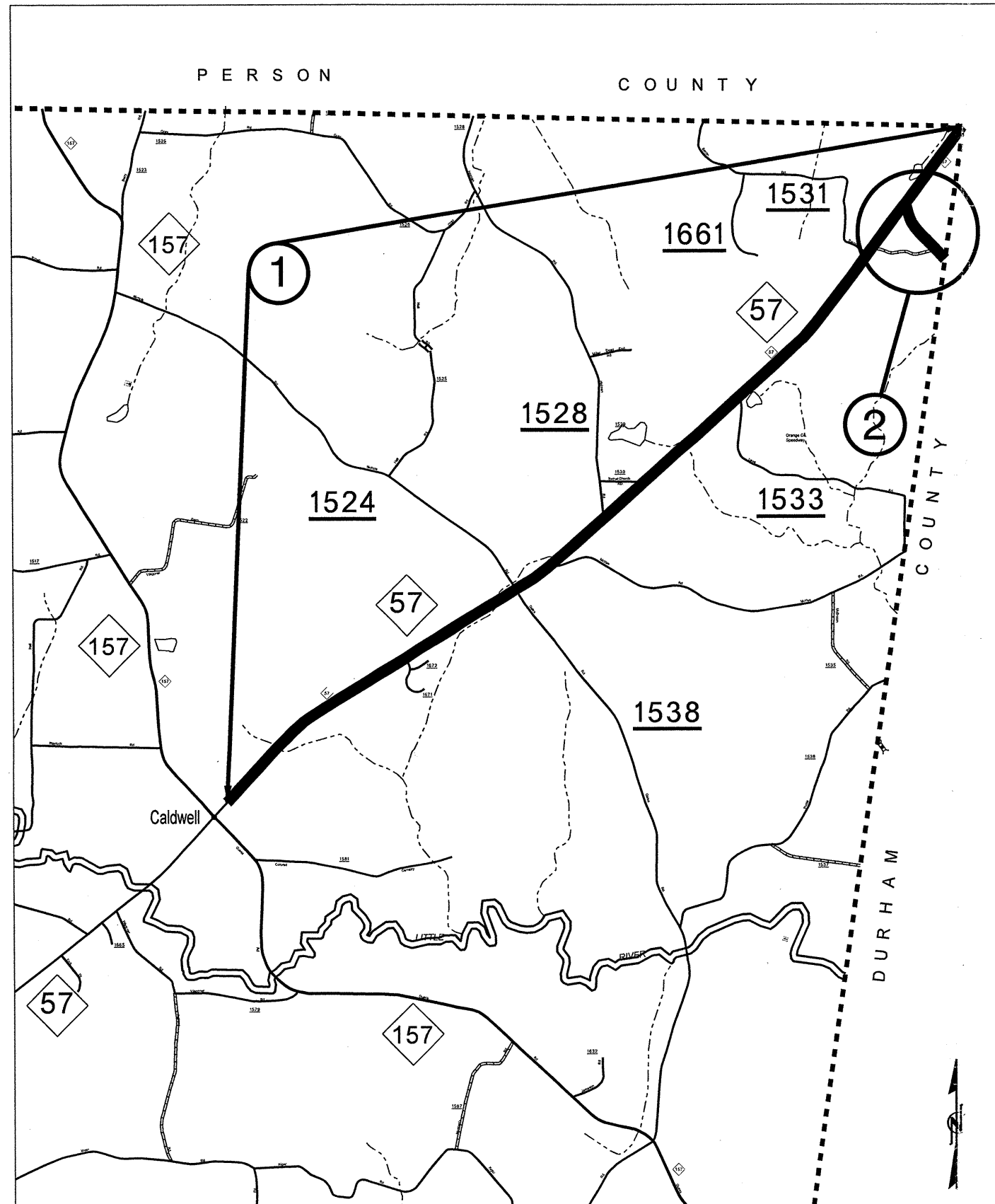
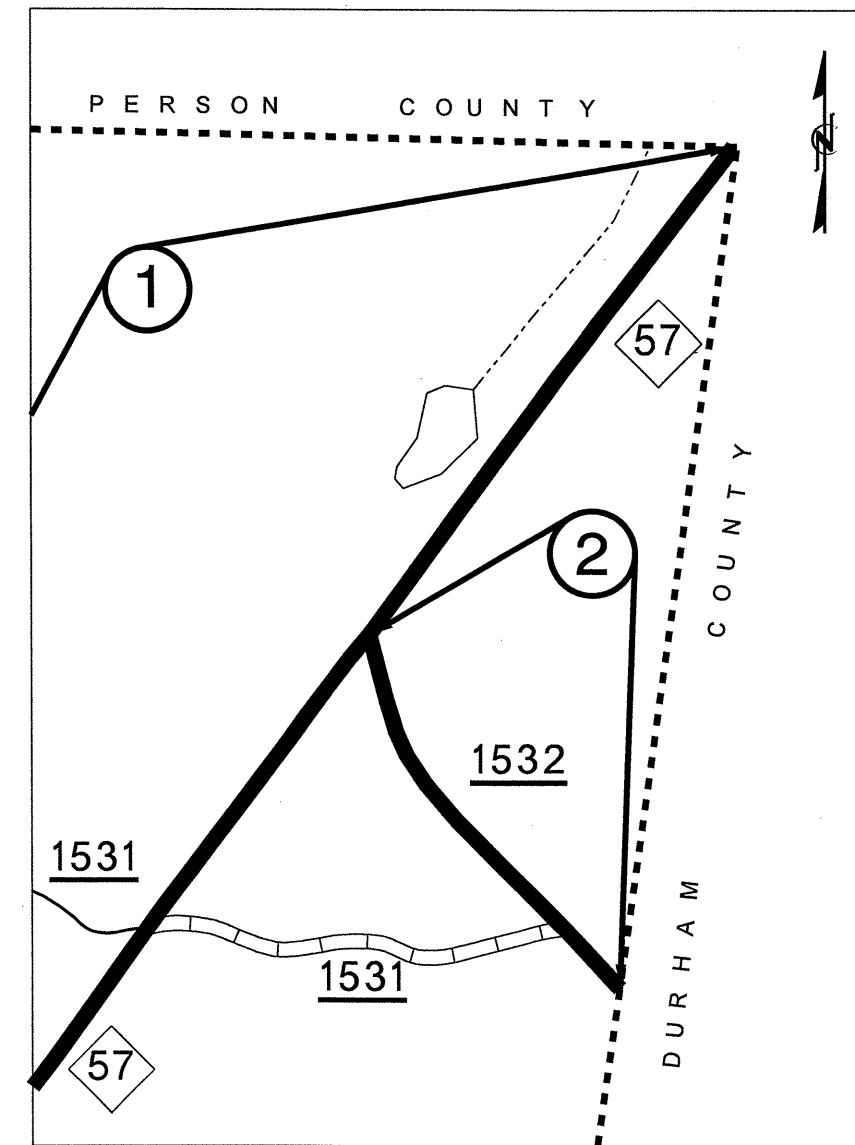


STATE	PROJECT NO.	SHEET NO.	TOTAL SHEETS
N.C.	7CR.10681.23, 7CR.20681.23	1	3

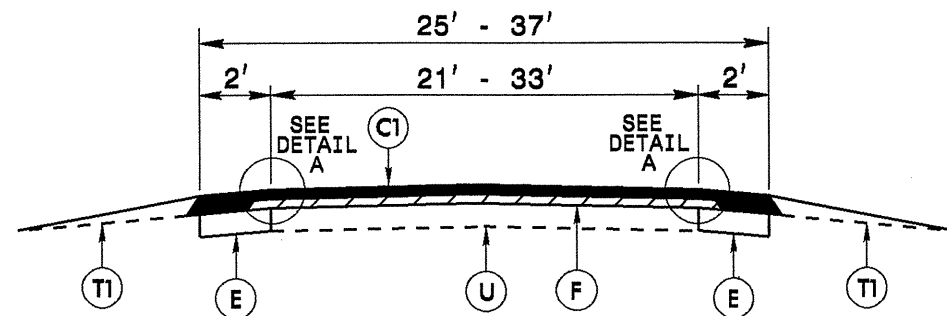


ORANGE COUNTY



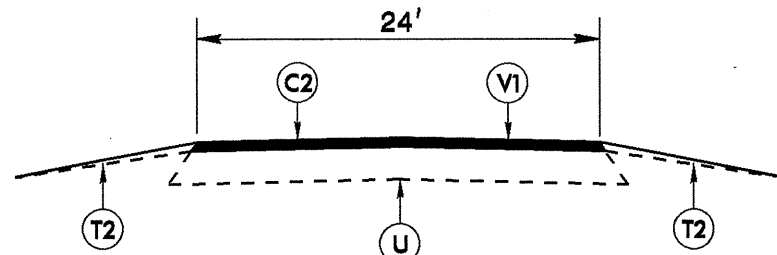
\$\$\$\$\$USLEHNAME\$\$\$\$\$

STATE	PROJECT NO.	SHEET NO.	TOTAL SHEETS
N.C.	7CR.10681.23, 7CR.20681.23	2	3



TYPICAL SECTION NO. 1

TO BE USED ON MAP 1

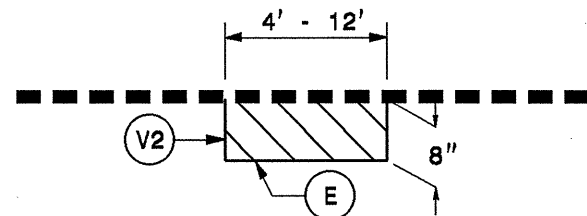


**NOTE: MILL 2" AND FILL 2" USING SURFACE COURSE, TYPE S9.5B

TYPICAL SECTION NO. 2

TO BE USED ON MAP 2

PATCHING DETAIL NO. 1

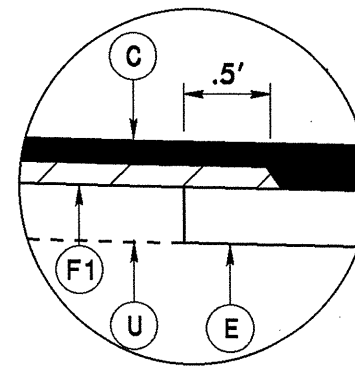


USE FOR PATCHING ON MAPS 1 AND 2.

MILL EXISTING ASPHALT PAVEMENT 8" IN DEPTH AND FILL WITH BASE COURSE, TYPE B25.0B AT LOCATIONS AS DIRECTED BY THE ENGINEER.

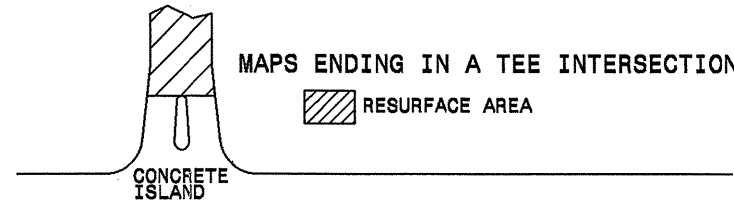
NOTE: MAP 1 IS USING 1225 TONS OF BASECOURSE, TYPE B25.0B FOR PATCHING

MAP 2 IS USING 100 TONS OF BASECOURSE, TYPE B25.0B FOR PATCHING



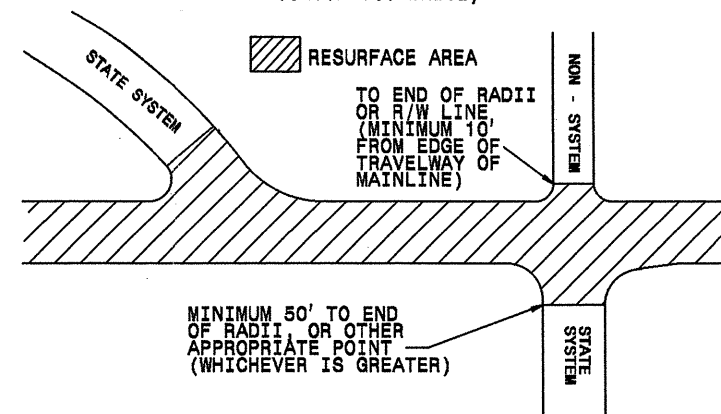
DETAIL A

**PAVING DETAIL 1
MAIN LINE IS NOT BEING RESURFACED**

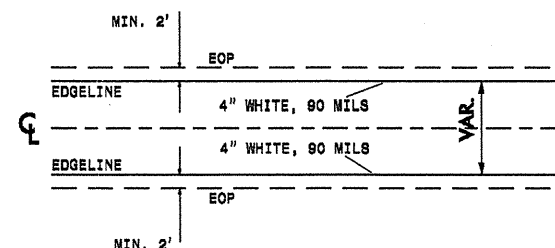


**PAVING DETAIL 2
MAIN LINE IS BEING RESURFACED**

NOTE: NON-SYSTEM (CITY STREET, PRIVATE DRIVE, SCHOOL BUS DRIVE)

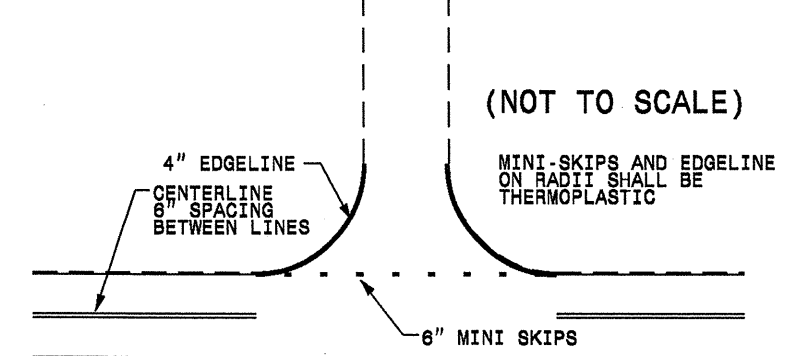


**STRIPING DETAIL 1
GENERAL STRIPING DETAIL FOR ENTIRE PROJECT**



NOTE:
1. TO BE USED IN CONJUNCTION WITH TYPICAL SECTION NO. 1
2. USE IN CONJUNCTION WITH THE EXISTING PAVEMENT MARKINGS TO ESTABLISH THE STRIPING.
3. USE IN CONJUNCTION WITH THE NCDOT STANDARD DRAWINGS.

TO BE USED AT ALL
NON-SIGNALIZED INTERSECTIONS



NOTE: MINI SKIPS SHALL BE PLACED ON A 10' CYCLE, CONTAINING AN 8' AND 2' SKIP, THE WIDTH OF THE SKIP SHALL BE 6".

****EACH MAP MUST BE PATCHED AS DIRECTED BY THE ENGINEER BEFORE PROCEEDING WITH RESURFACING****

PAVEMENT SCHEDULE

C1	PROP. APPROX. 1 1/2" ASPHALT CONCRETE SURFACE COURSE, TYPE S9.5B, AT AN AVERAGE RATE OF 168 LBS. PER SQ. YD.
C2	PROP. APPROX. 2" ASPHALT CONCRETE SURFACE COURSE, TYPE S9.5B, AT AN AVERAGE RATE OF 224 LBS. PER SQ. YD.
E	PROP. APPROX. 8" ASPHALT CONCRETE BASE COURSE, TYPE B25.0B, AT AN AVERAGE RATE OF 456 LBS. PER SQ. YD. IN EACH OF TWO LAYERS
F	AST MAT COAT, 78M STONE
U	EXISTING PAVEMENT.
T1	SHOULDER RECONSTRUCTION, AS DIRECTED BY THE ENGINEER.
T2	INCIDENTAL STONE BASE IN LOW SHOULDER AREAS, AS DIRECTED BY THE ENGINEER.
V1	2" MILLING
V2	8" MILLING FOR PATCHING (SEE PATCHING DETAIL #1)

\$\$\$\$\$SYTIME\$\$\$\$\$DGN\$\$\$\$\$USLNAME\$\$\$\$\$

PROJECT NO.	SHEET NO.	TOTAL NO.
7CR.10681.23, 7CR.20681.23	3	3

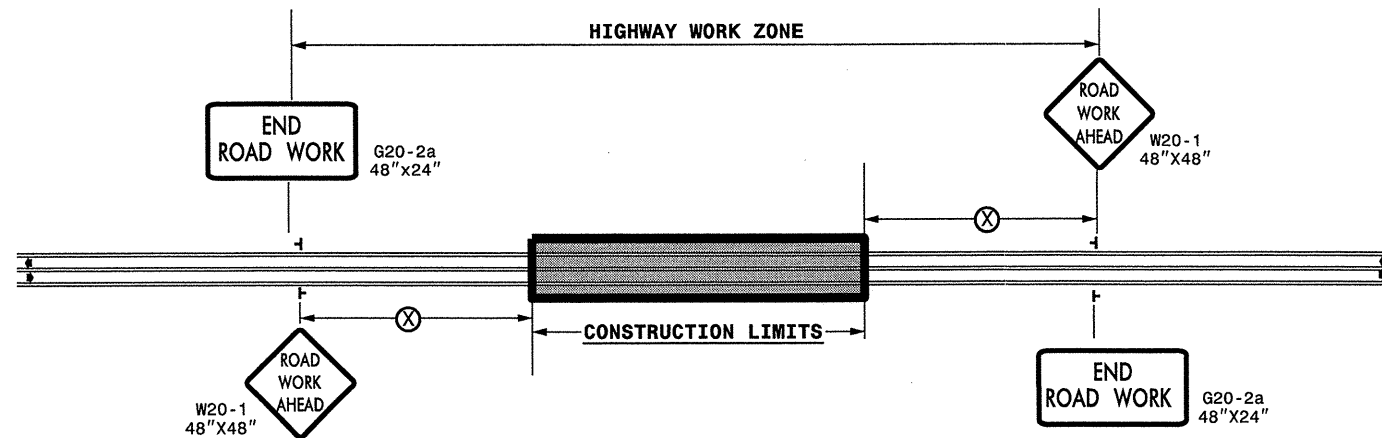
SUMMARY OF QUANTITIES

PROJECT NO	COUNTY	MAP NO	ROUTE	DESCRIPTION	TYP NO	FINAL SURFACE TESTING REQUIRED	LENGTH MI	WIDTH FT	BORROW EXCAVATION CY	INCIDENTAL STONE BASE TONS	SHOULDER RECONSTRUCTION SMI	MILLING ASPHALT PAVEMENT, 8" DEPTH SY	MILLING ASPHALT PAVEMENT, 2" DEPTH SY	ASPHALT CONC BASE COURSE, TYPE B25.0B TONS	ASPHALT CONC SURFACE COURSE, TYPE S9.5B TONS	ASPHALT BINDER FOR PLANT MIX, GRADE PG 64-22 TONS	ASPHALT SURFACE TREATMENT, MAT COAT, #78M STONE SY	SEEDING & MULCHING AC	GENERIC EROSION CONTROL ITEM - [RESIDENTIAL SEEDING] AC				
7CR.10681.23	Orange	1	1 NC 57	FROM 640' NORTH OF NC 157 TO PERSON COUNTY LINE	1	NO	1.75	21	20	125	9.89	2,686		3,410	2,178	277	21,560	1.80	1.80				
					1	NO	0.235	24					293	327	32	3,309							
					1	NO	1.92	21									2,397	2,389	246	23,654			
					1	NO	0.092	33									115	169	15	1,781			
					1	NO	0.041	21-33										51	63	6	649		
					1	NO	0.909	21										1,135	1,131	117	11,199		
TOTAL FOR MAP NO. 1							4.947		20	125	9.89	2,686		7,401	6,257	693	62,152	1.80	1.80				
TOTAL FOR PROJ NO. 7CR.10681.23							4.947		20	125	9.89	2,686		7,401	6,257	693	62,152	1.80	1.80				
7CR.20681.23	Orange	2	SR 1532 (MILE BRANCH RD)	FROM NC 57 TO DURHAM COUNTY LINE	2	NO	0.328	24		64		219	4,618	100	521	36							
					TOTAL FOR MAP NO. 2							0.328		64		219	4,618	100	521	36			
					TOTAL FOR PROJ NO. 7CR.20681.23							0.328		64		219	4,618	100	521	36			
GRAND TOTAL							5.275		20	189	9.89	2,905	4,618	7,501	6,778	729	62,152	1.80	1.80				

THERMOPLASTIC AND PAINT QUANTITIES

PROJECT NO	COUNTY	MAP NO	ROUTE	DESCRIPTION	LENGTH	WIDTH	4685000000-E	4686000000-E	4690000000-E	4810000000-E		4905000000-N			
							4" X 90 M WHITE THERMO LF	4" X 120 M YELLOW THERMO LF	6" X 120 M WHITE THERMO LF	4" WHITE PAINT LF	4" YELLOW PAINT LF	SNOWPLOWABLE PAVEMENT MARKERS EA			
7CR.10681.23	Orange	1	1 NC 57	FROM NC 157 TO PERSON COUNTY LINE	4.947	21	52,240	23,853	176			376			
					TOTAL FOR MAP NO. 1					4.947		52,240	23,853	176	376
					TOTAL FOR PROJ NO. 7CR.10681.23					4.947		52,240	23,853	176	376
7CR.20681.23	Orange	2	SR 1532 (MILE BRANCH RD)	FROM NC 57 TO DURHAM COUNTY LINE	0.328	24	75		20	6,770	5,365				
					TOTAL FOR MAP NO. 2					0.328		75	20	6,770	5,365
					TOTAL FOR PROJ NO. 7CR.20681.23					0.328		75	20	6,770	5,365
GRAND TOTAL					5.275		52,315	23,853	196	6,770	5,365	376			

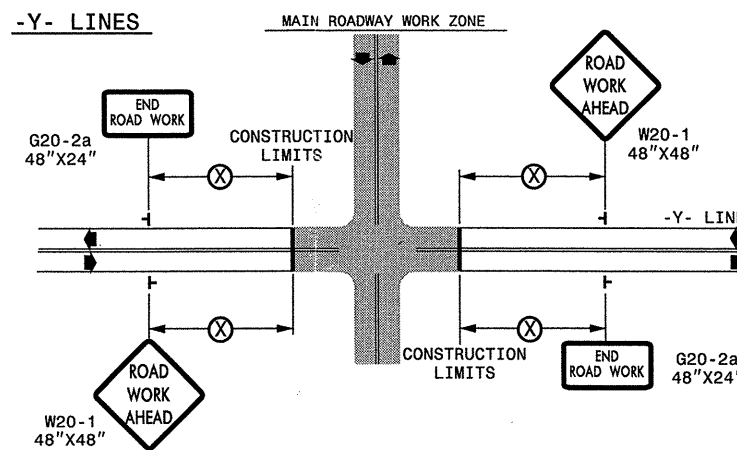
TWO-WAY UNDIVIDED ** (L-LINES)



POSTED SPEED LIMIT (M.P.H.)	RECOMMENDED MINIMUM SIGN SPACING
≤ 50	500'
≥ 55	1000'

STATE OF NORTH CAROLINA
DEPT. OF TRANSPORTATION
DIVISION OF HIGHWAYS
RALEIGH, N.C.

ROADWAYS INTERSECTING ALONG 2 WAY UNDIVIDED WORK ZONE (Y-LINES)



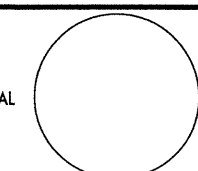

GENERAL NOTES

- USE FLUORESCENT ORANGE SHEETING (TYPE VII OR HIGHER) ON ALL ADVANCED WORK ZONE SIGNS.
- DO NOT INSTALL ADVANCE WARNING SIGNS MORE THAN 3 DAYS PRIOR TO BEGINNING OF WORK.
- SIGNS SHOWN ARE REQUIRED FOR WORK ZONES THAT WILL REMAIN IN EFFECT OVERNIGHT. FOR SHORT-TERM DAILY MAINTENANCE TYPE OPERATIONS, THIS SIGNING APPLICATION IS OPTIONAL; MAY USE ONLY APPLICABLE ROADWAY STANDARD DRAWINGS INSTEAD. HOWEVER, IF THIS SIGNING APPLICATION IS USED, SIGNS MAY BE PORTABLE MOUNTED.
- ALL SIGN SPACING DIMENSIONS ARE APPROXIMATE, FIELD ADJUST AS NECESSARY OR AS DIRECTED.
- USE 3LB STEEL U-CHANNEL POST OR 4" X 4" WOOD POST FOR ALL WORK ZONE SIGNS. 3LB STEEL U-CHANNEL POSTS MUST MEET THE REQUIREMENTS OF STANDARD SPECIFICATION SECTION 1094-1(B), MAY BE GALVANIZED STEEL, OR MAY BE PAINTED GREEN BY THE POST MANUFACTURER. SQUARE STEEL TUBING POSTS HAVING EQUIVALENT STRENGTH OF THE 3 LB STEEL U-CHANNEL POST ARE ALSO ACCEPTABLE FOR USE. ERECT SIGNS PER ROADWAY STANDARD DRAWING 1110.01. PAYMENT FOR WOOD POSTS, 3LB STEEL U-CHANNEL AND SQUARE STEEL TUBING POSTS WITH SIGNS WILL BE MADE ACCORDING TO STANDARD SPECIFICATION "WORK ZONE SIGNS" SECTION 1110.
- WHEN NECESSARY, USE SPLICING IN ACCORDANCE WITH ROADWAY STANDARD DRAWING NO. 1110.01. REMOVE ENTIRE POST WHEN REMOVING SIGNS WITH SPLICED POSTS.
- DO NOT BACK BRACE SIGN SUPPORTS.
- ** TWO-WAY UNDIVIDED ADVANCE WARNING SIGN CONFIGURATION MAY BE USED ON URBAN MULTI-LANE FACILITIES WHERE CONDITIONS LIMIT THE USE OF DUAL MOUNTED SIGNS AS DETERMINED BY THE ENGINEER.

LEGEND

- └ STATIONARY SIGN
- ◀ DIRECTION OF TRAFFIC FLOW

SHEET 1 OF 1

APPROVED: _____	DATE: _____	DETAIL DRAWING FOR TWO-WAY UNDIVIDED AND URBAN FREEWAYS ADVANCED WORK ZONE WARNING SIGNS	
SEAL 			
SCALE: NONE		REVISIONS	
DATE: _____		7-98	10/01
DWG. BY: _____		10-98	03/04
DESIGN BY: _____		01/01	11/04
REVIEWED BY: _____	CADD	11/04	

18-MAR-2011 10:05
 \\DOT\UP\ROOT\CON\GROUPS\WZTC\TMC\WZTC\Resurfacing\2010\Centra\2010\Div07\C2027XX_7CR.10681.23x2.0r-ange.nc57_af\ixit-c2027XX_7CR.10681.23x2.0r-ange.nc57_stationary.dgn