

TIP NO.	SHEET NO.
U-4011	PMP-1
APPROVED: _____	
DATE: _____	
SEAL	

**STATE OF NORTH CAROLINA
DEPARTMENT OF TRANSPORTATION**

**PAVEMENT MARKING PLAN
DURHAM COUNTY**

**LOCATION: SR 1959 (SOUTH MIAMI BLVD.) FROM SOUTH OF SR 2112 (METHODIST ST.)
TO NORTH OF SR 1960 (BETHESDA AVE.)**

T.I.P.: U-4011

CONTRACT: C202164

ROADWAY STANDARD DRAWINGS

THE FOLLOWING ROADWAY STANDARDS AS APPEAR IN "ROADWAY STANDARD DRAWINGS" - PROJECT SERVICES UNIT - N.C. DEPARTMENT OF TRANSPORTATION - RALEIGH, N.C., DATED JULY 2006 ARE APPLICABLE TO THIS PROJECT AND BY REFERENCE HEREBY ARE CONSIDERED A PART OF THESE PLANS:

<u>STD. NO.</u>	<u>TITLE</u>
1205.01	PAVEMENT MARKINGS - LINE TYPES AND OFFSETS
1205.02	PAVEMENT MARKINGS - 2 LANE AND MULTILANE ROADWAYS
1205.04	PAVEMENT MARKINGS - INTERSECTIONS
1205.05	PAVEMENT MARKINGS - TURN LANES
1205.06	PAVEMENT MARKINGS - THRU LANE DROPS
1205.07	PAVEMENT MARKINGS - PEDESTRIAN CROSSINGS
1205.08	PAVEMENT MARKINGS - SYMBOL AND WORD MESSAGES
1205.09	PAVEMENT MARKINGS - PAINTED ISLANDS
1205.12	PAVEMENT MARKINGS - BRIDGES
1250.01	PAVEMENT MARKER SPACING
1251.01	RAISED PAVEMENT MARKERS - TEMPORARY AND PERMANENT
1261.01	GUARDRAIL AND BARRIER DELINEATOR SPACING
1261.02	GUARDRAIL AND BARRIER DELINEATOR TYPES
1262.01	GUARDRAIL END DELINEATOR
1264.02	PLACEMENT OF OBJECT MARKERS

GENERAL NOTES

THE FOLLOWING GENERAL NOTES APPLY AT ALL TIMES FOR THE DURATION OF THE CONSTRUCTION PROJECT, EXCEPT WHEN OTHERWISE NOTED IN THE PLAN, OR DIRECTED BY THE ENGINEER.

- A) INSTALL PAVEMENT MARKINGS AND PAVEMENT MARKERS ON THE FINAL SURFACE AS FOLLOWS:

<u>ROAD NAME</u>	<u>MARKING</u>	<u>MARKER</u>
ALL	THERMOPLASTIC	RAISED MARKERS


- B) TIE PROPOSED PAVEMENT MARKING LINES TO EXISTING PAVEMENT MARKING LINES.
 C) REMOVE/REPLACE ANY CONFLICTING/DAMAGED PAVEMENT MARKINGS AND MARKERS.
 D) STOPBAR LOCATION AT NON-SIGNALIZED INTERSECTIONS MAY BE ADJUSTED AS DIRECTED BY THE ENGINEER.
 E) MARKERS ARE TO PLACED ACCORDING TO THE ROADWAY STANDARD DRAWINGS.

INDEX

<u>SHEET NO.</u>	<u>DESCRIPTION</u>
PMP-1	PAVEMENT MARKING PLAN COVER SHEET
PMP-2	PAVEMENT MARKING SCHEDULE
PMP-3-5	PAVEMENT MARKING DETAIL

PLAN PREPARED BY: N.C.D.O.T. SIGNING AND DELINEATION UNIT

R.W. KING, P.E. STATE SIGNING & DELINEATION ENGINEER
 S.W. JOHNS SIGNING & DELINEATION DESIGN ENGINEER

TIP NO. U-4011	SHEET NO. PMP-2
APPROVED: <i>RW</i>	
DATE: 3/3/11	
SEAL	
	

PAVEMENT MARKINGS

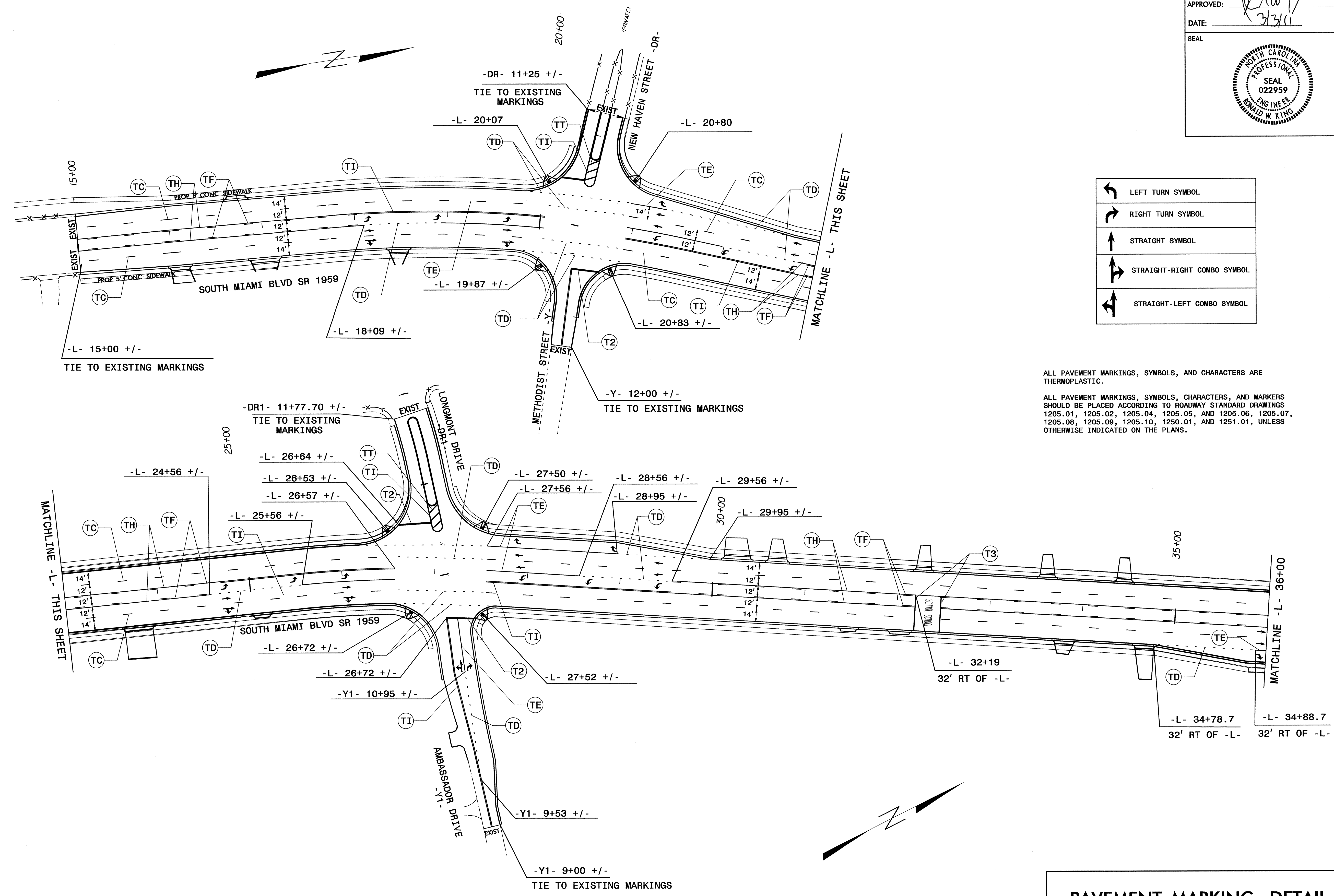
SYMBOL	DESCRIPTION
THERMOPLASTIC(24", 120 MILS)	
T2	WHITE STOPBAR
T3	WHITE CROSSWALK LINE
THERMOPLASTIC(4", 120 MILS)	
TC	10 FT. WHITE SKIP
TD	2 FT. - 13 FT./SP WHITE MINISKIP
TE	WHITE SOLID LANE LINE
TF	10 FT. YELLOW SKIP
TH	YELLOW SINGLE CENTER
TI	YELLOW DOUBLE CENTER
THERMOPLASTIC(8", 90 MILS)	
TT	YELLOW DIAGONAL
THERMOPLASTICPAVEMENT MARKING CHARACTER (120 MILS)	
UI	ALPHANUMERIC CHAR.
THERMOPLASTICPAVEMENT MARKING SYMBOLS (90 MILS)	
UA	LEFT TURN ARROW
UB	RIGHT TURN ARROW
UC	STRAIGHT ARROW
UD	COMBO.STRAIGHT/LEFT
UE	COMBO.STRAIGHT/RIGHT
UN	24" YIELD LINE TRIANGLE

MARKERS

PERMANENT RAISED PAVEMENT MARKERS	
MA	YELLOW & YELLOW
MB	CRYSTAL & RED

PAVEMENT MARKING SCHEDULE

TIP NO. U-4011	SHEET NO. PMP-3
APPROVED: <i>[Signature]</i>	
DATE: 3/31/11	
SEAL	



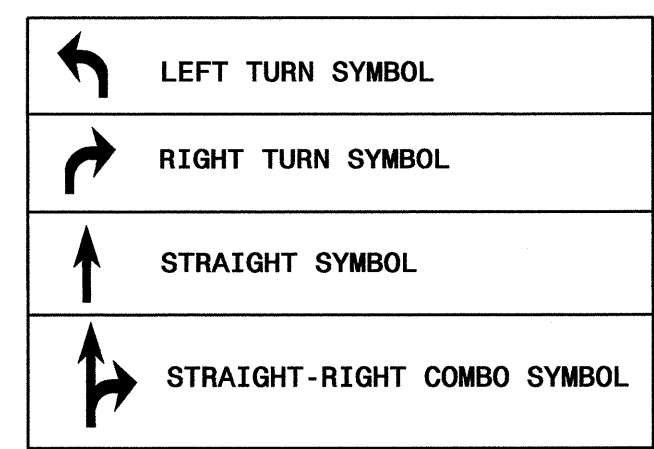
	LEFT TURN SYMBOL
	RIGHT TURN SYMBOL
	STRAIGHT SYMBOL
	STRAIGHT-RIGHT COMBO SYMBOL
	STRAIGHT-LEFT COMBO SYMBOL

ALL PAVEMENT MARKINGS, SYMBOLS, AND CHARACTERS ARE THERMOPLASTIC.

ALL PAVEMENT MARKINGS, SYMBOLS, CHARACTERS, AND MARKERS SHOULD BE PLACED ACCORDING TO ROADWAY STANDARD DRAWINGS 1205.01, 1205.02, 1205.04, 1205.05, AND 1205.06, 1205.07, 1205.08, 1205.09, 1205.10, 1250.01, AND 1251.01, UNLESS OTHERWISE INDICATED ON THE PLANS.

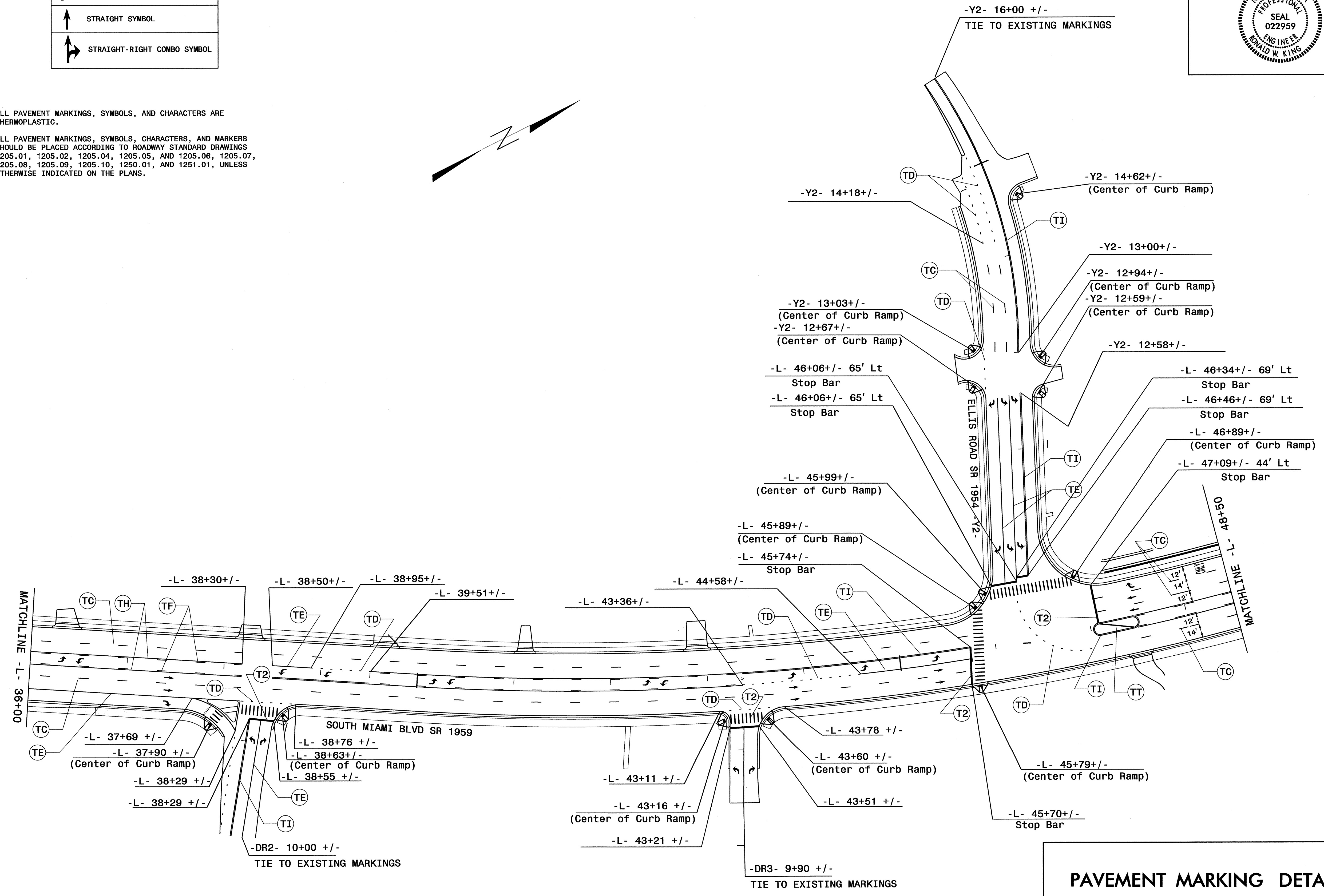
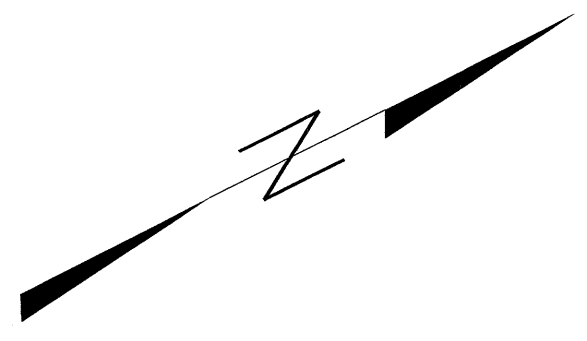
PAVEMENT MARKING DETAIL

03-MAR-2011 10:08
 P:\TIP-objects-U4011\Traffic\Signing\CADD\PMF\new sheet 3.dgn
 sjohns AT 1E247957



ALL PAVEMENT MARKINGS, SYMBOLS, AND CHARACTERS ARE THERMOPLASTIC.

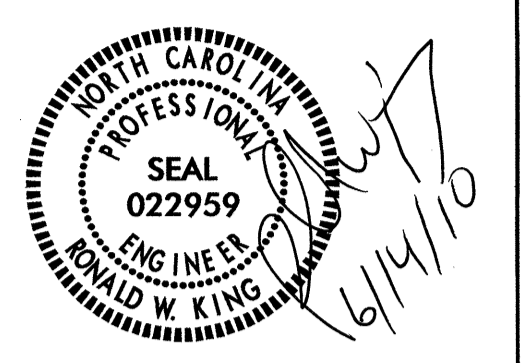
ALL PAVEMENT MARKINGS, SYMBOLS, CHARACTERS, AND MARKERS SHOULD BE PLACED ACCORDING TO ROADWAY STANDARD DRAWINGS 1205.01, 1205.02, 1205.04, 1205.05, AND 1205.06, 1205.07, 1205.08, 1205.09, 1205.10, 1250.01, AND 1251.01, UNLESS OTHERWISE INDICATED ON THE PLANS.



PAVEMENT MARKING DETAIL

03-MAR-2011 11:44
 P:\TIP\Projects\U4011\Traffic\Signing\CADD\PMU\U4011_rev_PMP_NEW_03.dgn
 s.johns AT 12/24/05

TIP NO.	SHEET NO.
U-4011	PMP-5
APPROVED: _____	
DATE: _____	
SEAL	

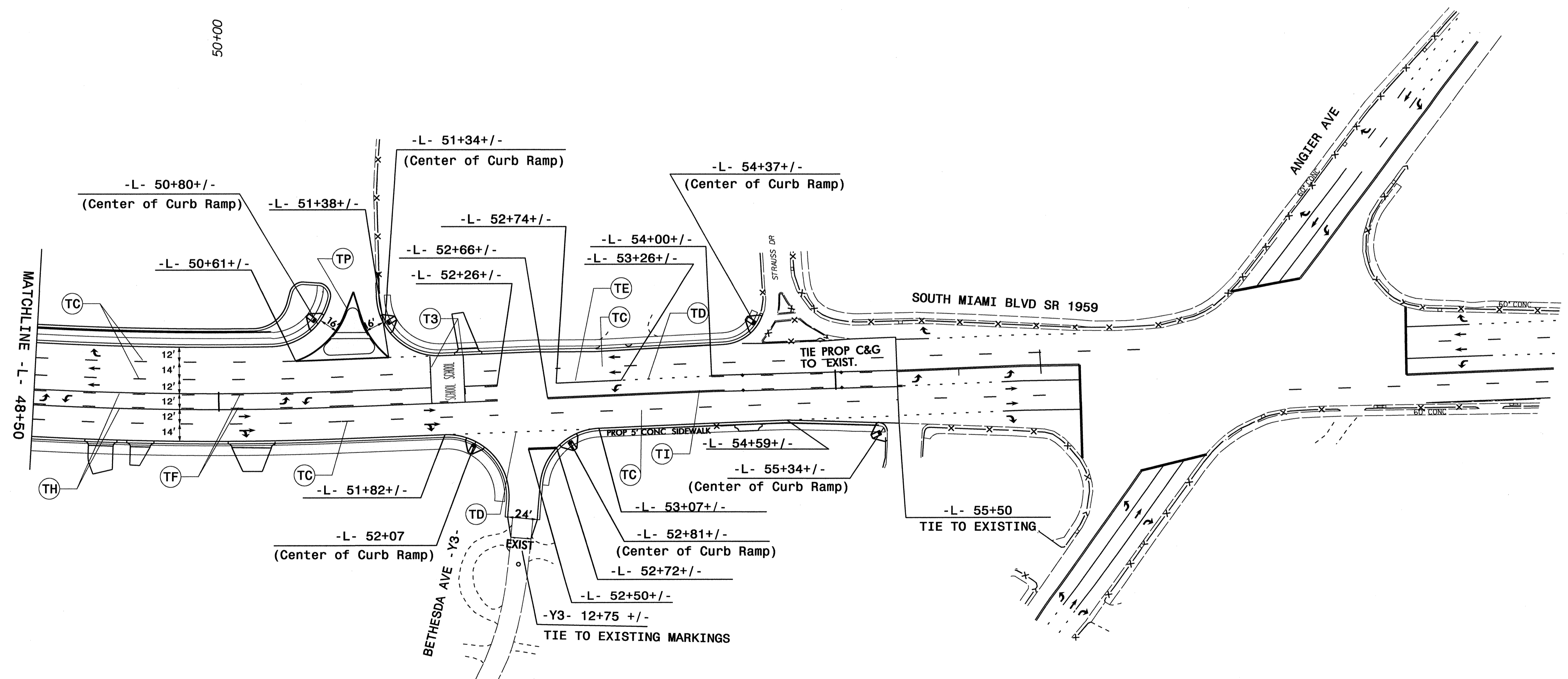


	LEFT TURN SYMBOL
	RIGHT TURN SYMBOL
	STRAIGHT SYMBOL
	STRAIGHT-RIGHT COMBO SYMBOL



ALL PAVEMENT MARKINGS, SYMBOLS, AND CHARACTERS ARE THERMOPLASTIC.

ALL PAVEMENT MARKINGS, SYMBOLS, CHARACTERS, AND MARKERS SHOULD BE PLACED ACCORDING TO ROADWAY STANDARD DRAWINGS 1205.01, 1205.02, 1205.04, 1205.05, AND 1205.06, 1205.07, 1205.08, 1205.09, 1205.10, 1250.01, AND 1251.01, UNLESS OTHERWISE INDICATED ON THE PLANS.



PAVEMENT MARKING PLAN

14-JUN-2010 15:00
 P:\TIP-Proj\ec\13-U-4011-Traffic\Signing\CADD\PMP\new sheet 3.dgn
 s.johns AT 1E247957