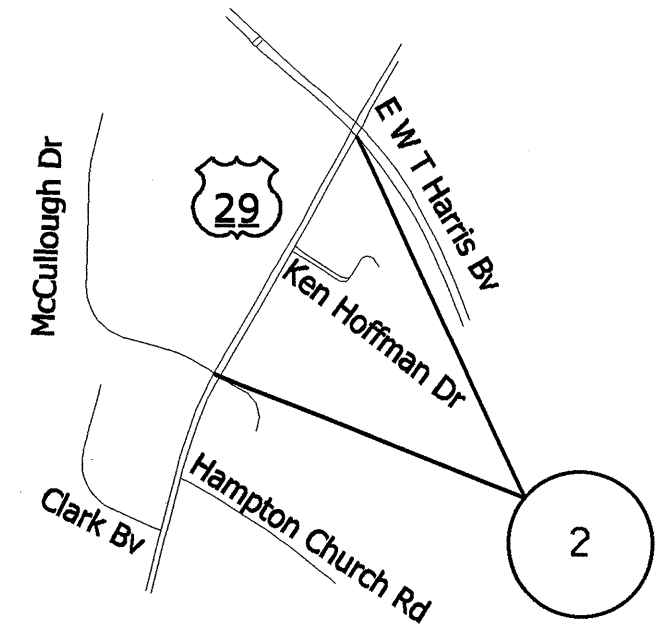
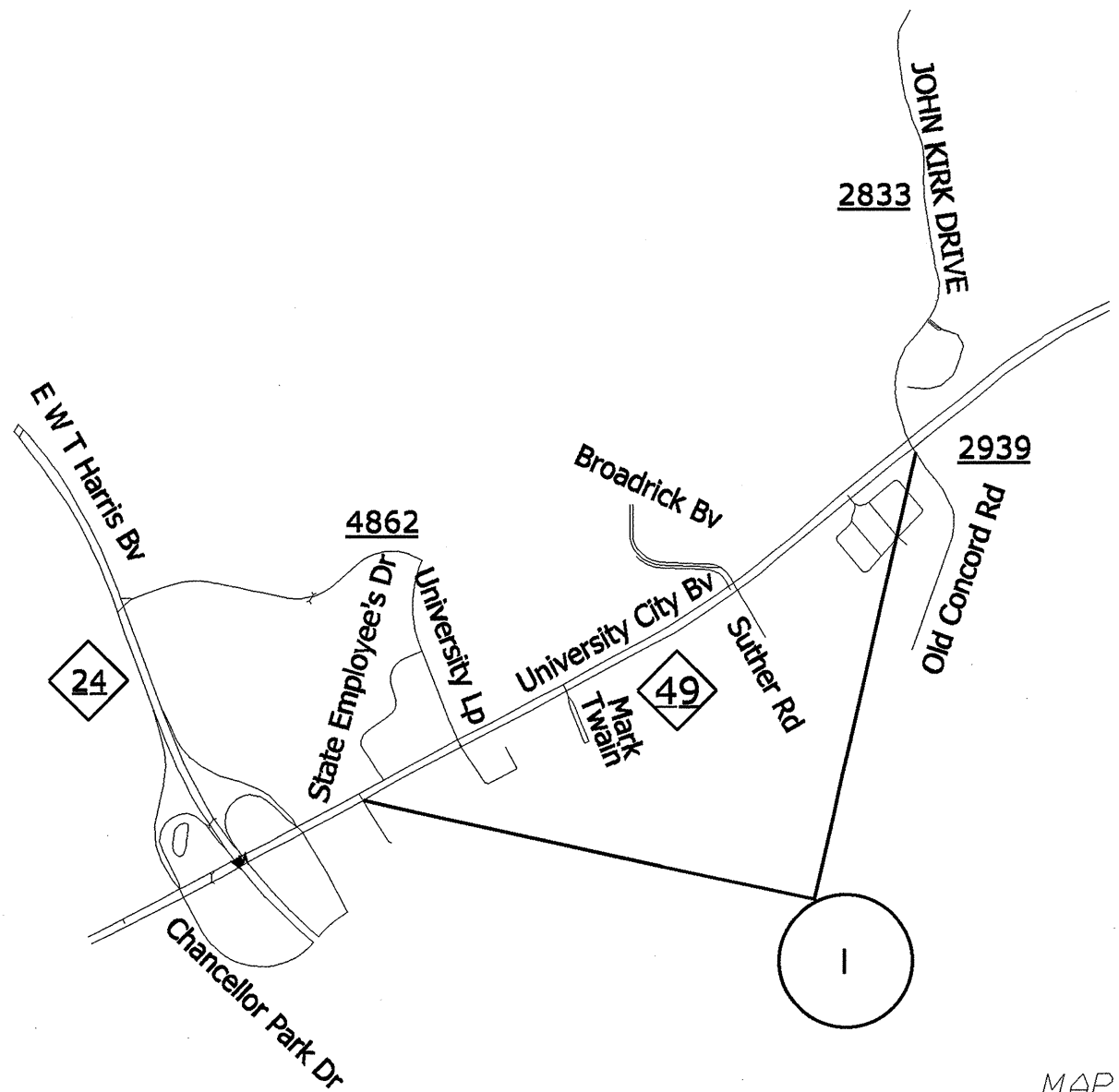


STATE	PROJECT NO.	SHEET NO.	TOTAL SHEETS
N.C.	10CR.1060L33, etc.	1	



MAP

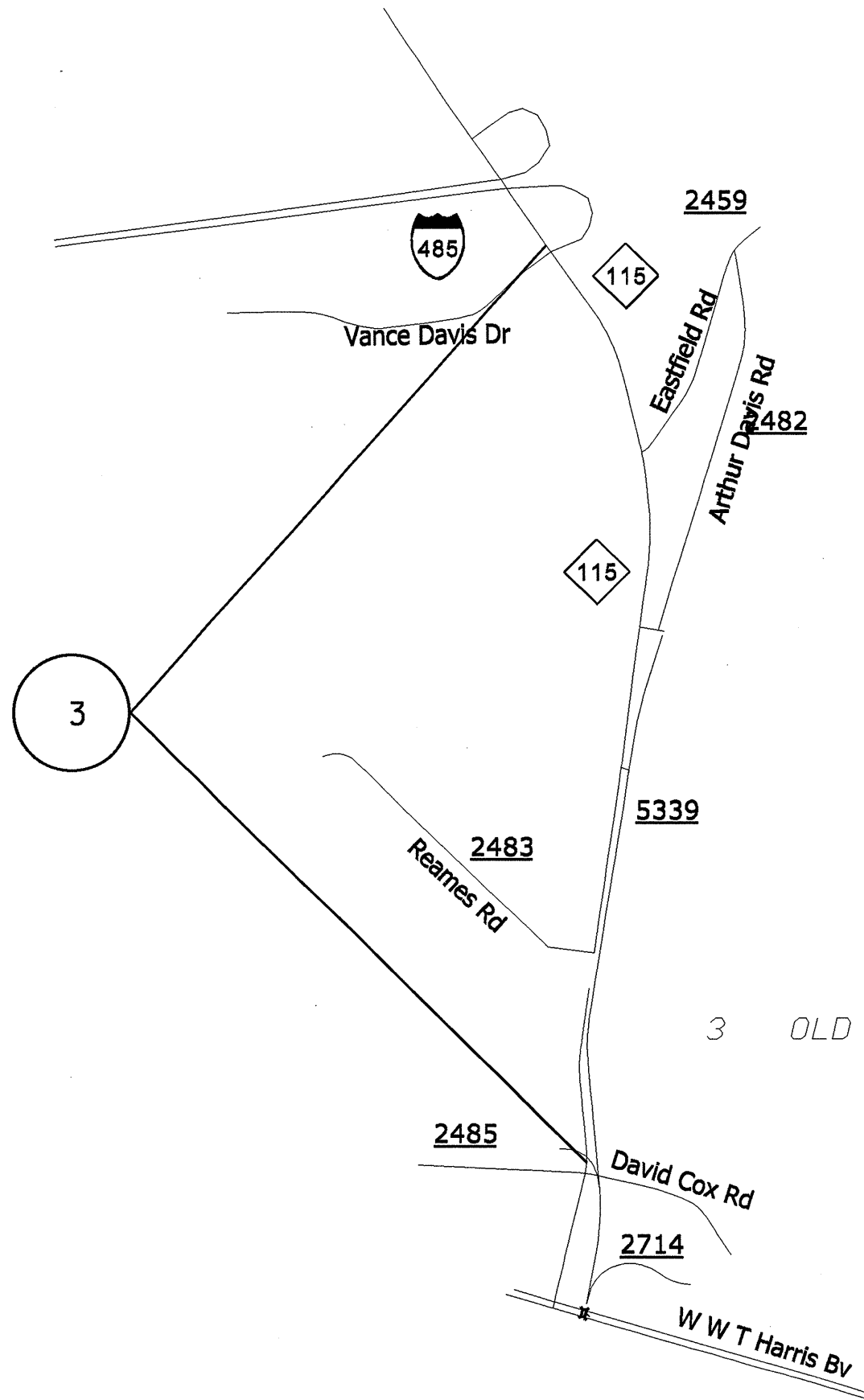
DESCRIPTION

- | | | |
|---|------------------------------|--|
| 1 | University City Blvd (NC 49) | FROM W.T>HARRIS BLVD (NC 24) TO JOHN KIRK DR |
| 2 | North Tryon St (US 29) | FROM W.T. HARRIS BLVD (NC 24) TO McCULLOUGH DR |

2011 MECKLENBURG COUNTY RESURFACING

SCALE	-NA-		REVISIONS	
DATE	01/11			
DWG. BY	JSL			
DESIGN BY	JSL			
APPROVED				

STATE	PROJECT NO.	SHEET NO.	TOTAL SHEETS
N.C.	IOCR.10601.33, etc.	2	



MAP

3 OLD STATESVILLE RD (NC 115)

DESCRIPTION

FROM DAVID COX RD (SR 2485) TO PVT JT AT I-485

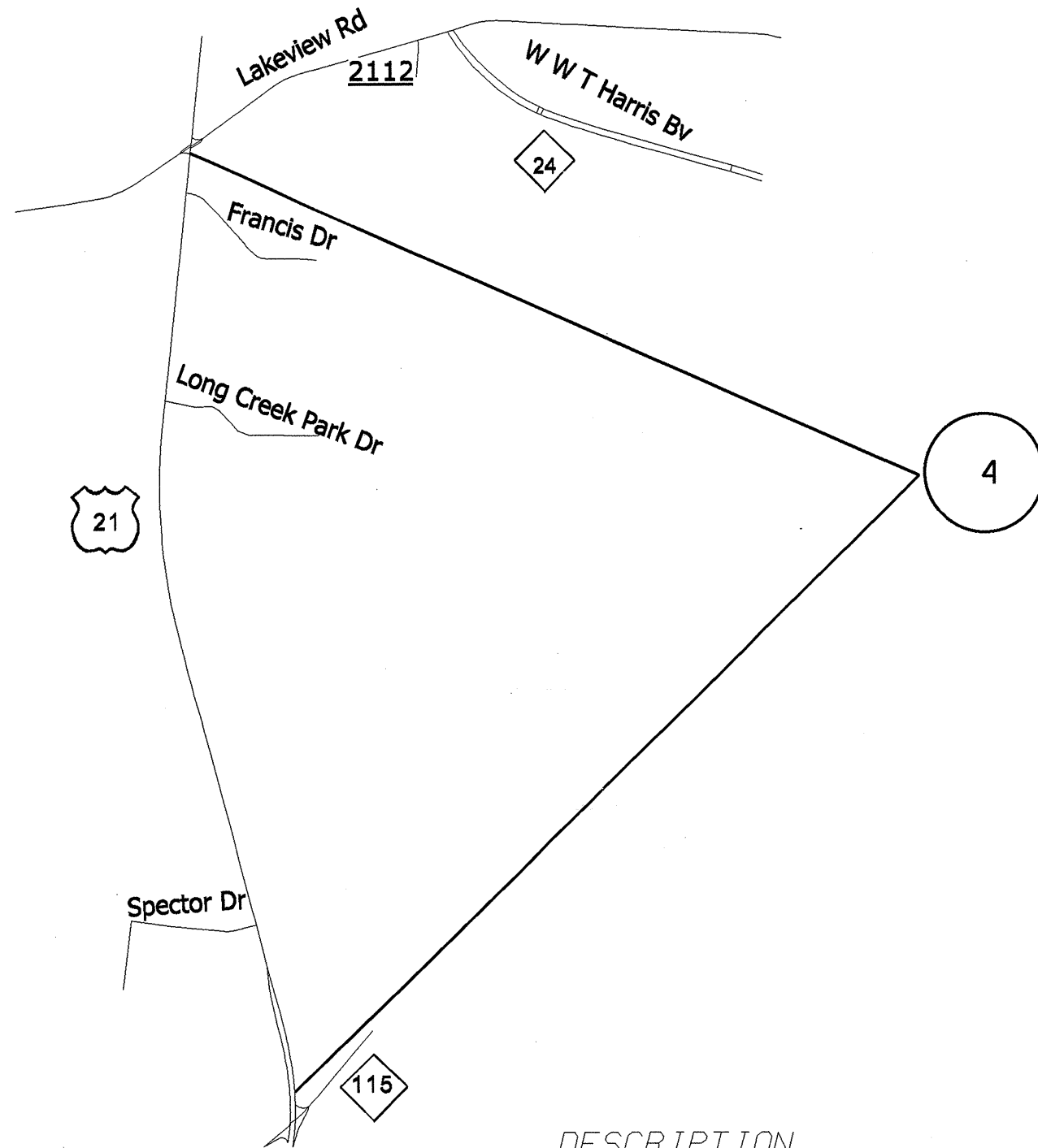
2011 MECKLENBURG COUNTY
RESURFACING

SCALE	-NA-
DATE	01/11
DWG. BY	JSL
DESIGN BY	JSL
APPROVED	



REVISIONS	

STATE	PROJECT NO.	SHEET NO.	TOTAL SHEETS
N.C.	10CR.10601.33, etc.	3	



MAP

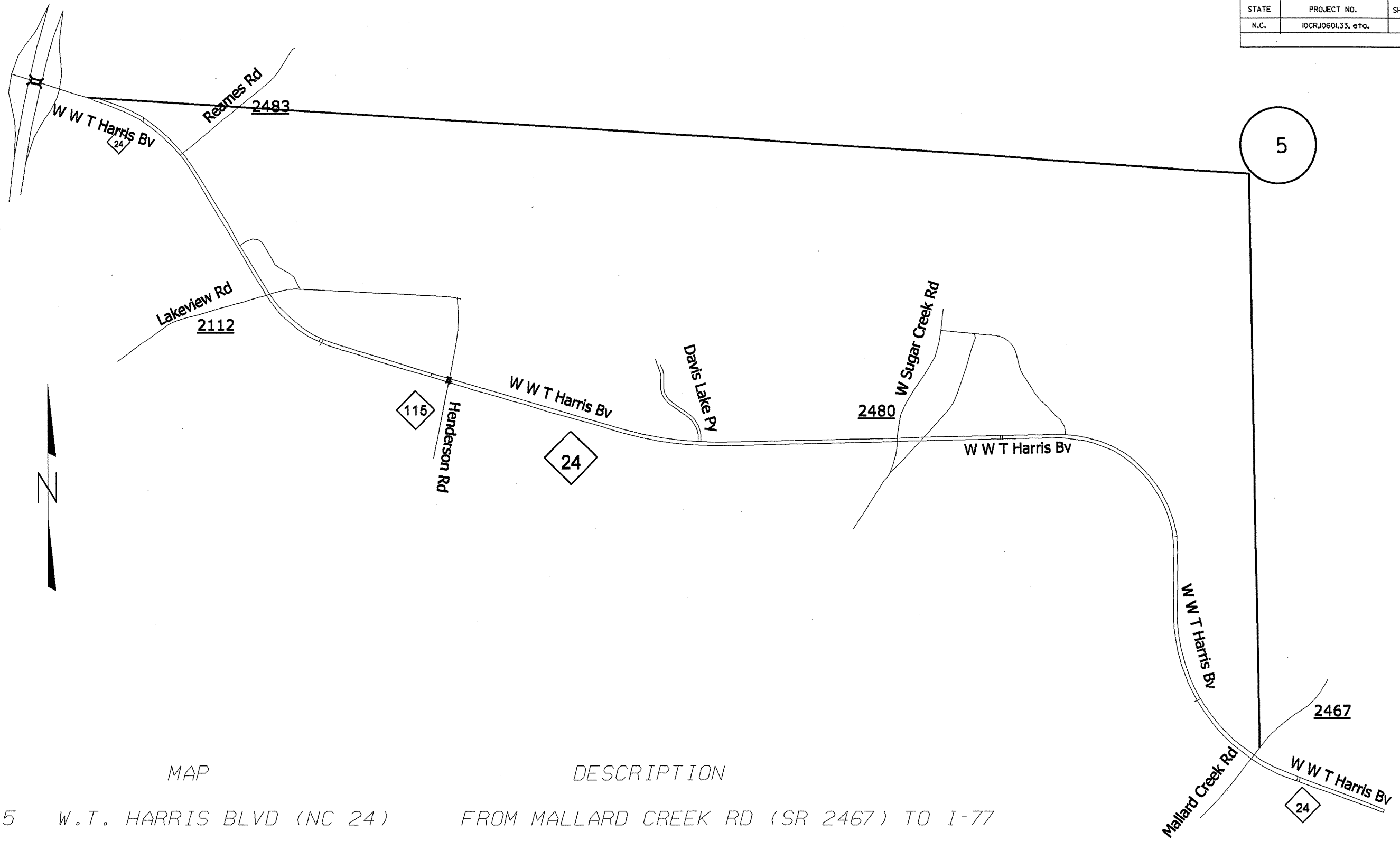
DESCRIPTION

4 Statesville Rd (US 21) FROM STATESILLE RD (NC 115) TO LAKEVIEW RD (SR 2112)

2011 MECKLENBURG COUNTY
RESURFACING

SCALE	-NA-		REVISIONS
DATE	01/11		
DWG. BY	JSL		
DESIGN BY	JSL		
APPROVED			

STATE	PROJECT NO.	SHEET NO.	TOTAL SHEETS
N.C.	10CR10601.33, etc.	4	



MAP

DESCRIPTION

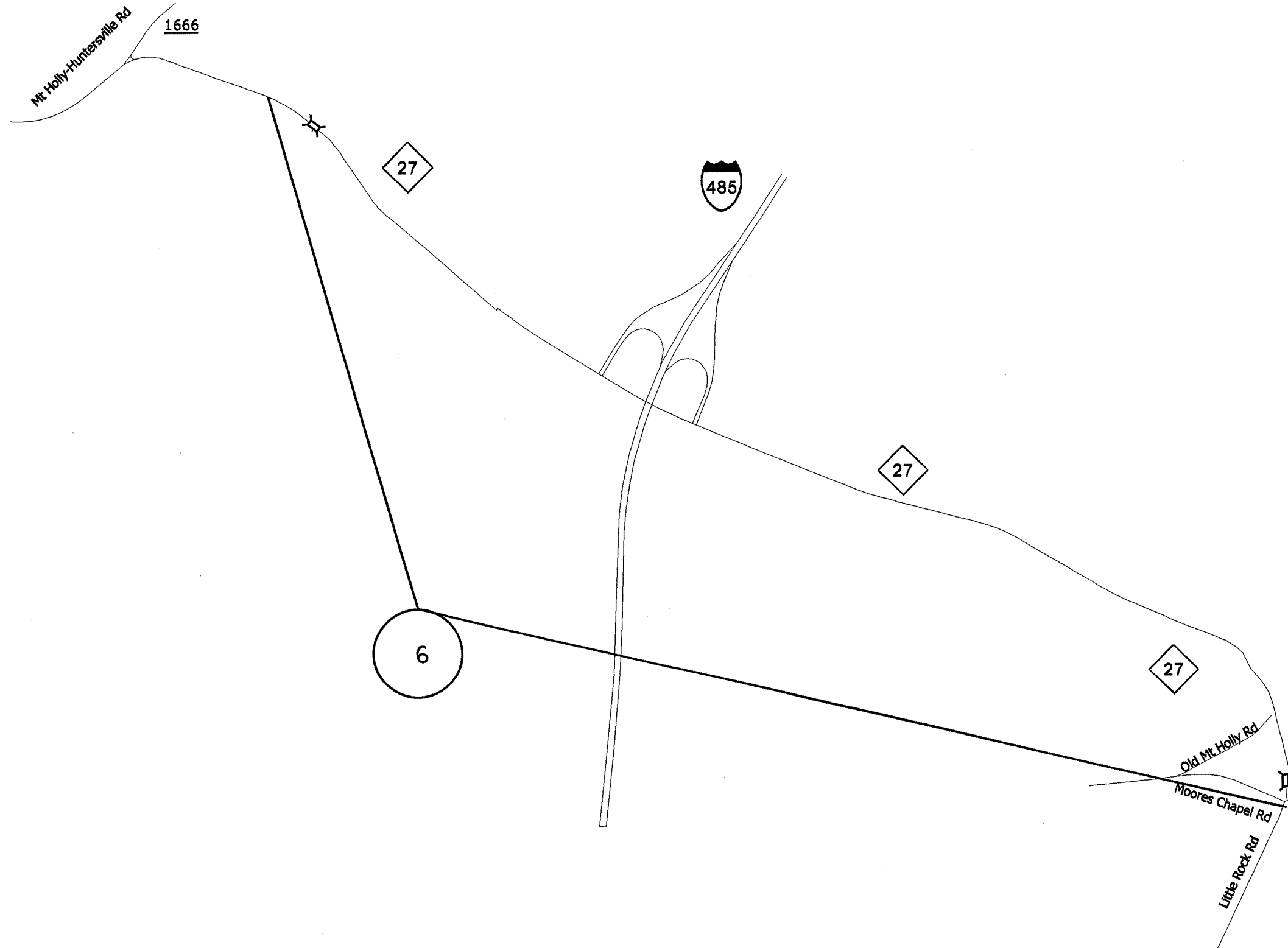
5 W.W.T. HARRIS BLVD (NC 24)

FROM MALLARD CREEK RD (SR 2467) TO I-77

2011 MECKLENBURG COUNTY
RESURFACING

SCALE	-NA-		REVISIONS	
DATE	01/11			
DWG. BY	JSL			
DESIGN BY	JSL			
APPROVED				

STATE	PROJECT NO.	SHEET NO.	TOTAL SHEETS
N.C.	IOCR.10601.33, etc.	5	



MAP

6 FREEDOM DR (NC 27)

DESCRIPTION

FROM LITTLE ROCK (SR 1641) TO PVT JT
SOUTH OF MT HOLLY-HUNTERSVILLE RD (SR 1666)

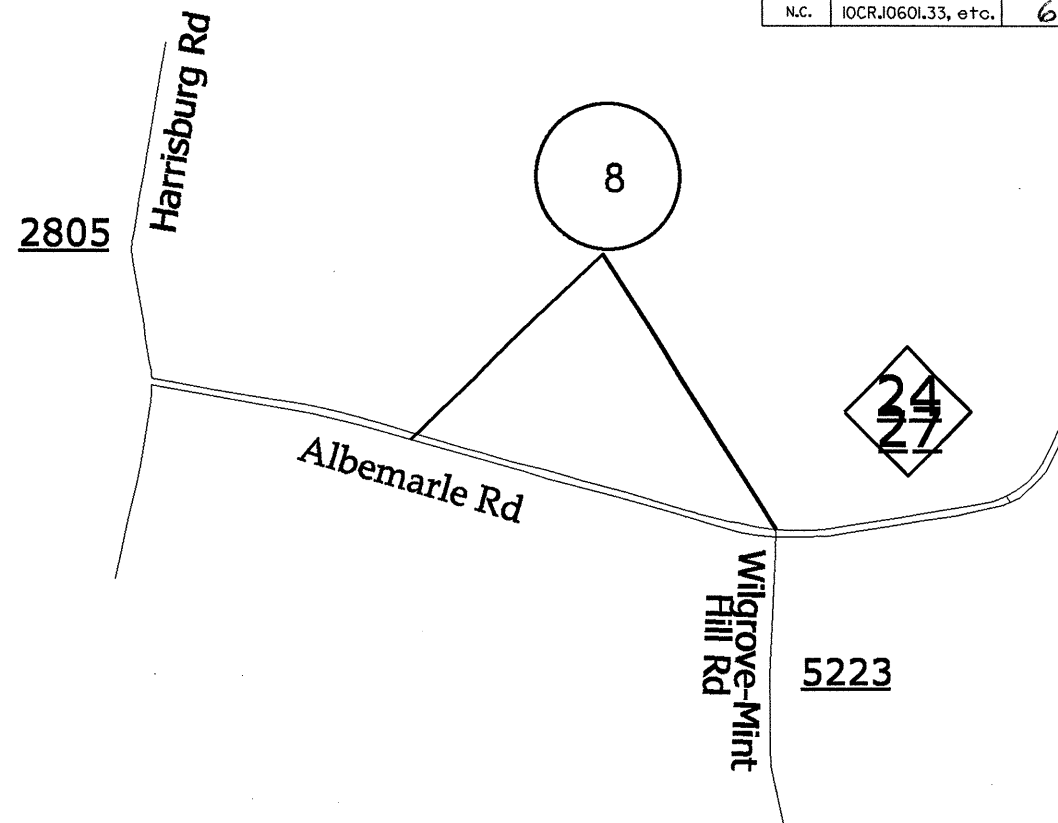
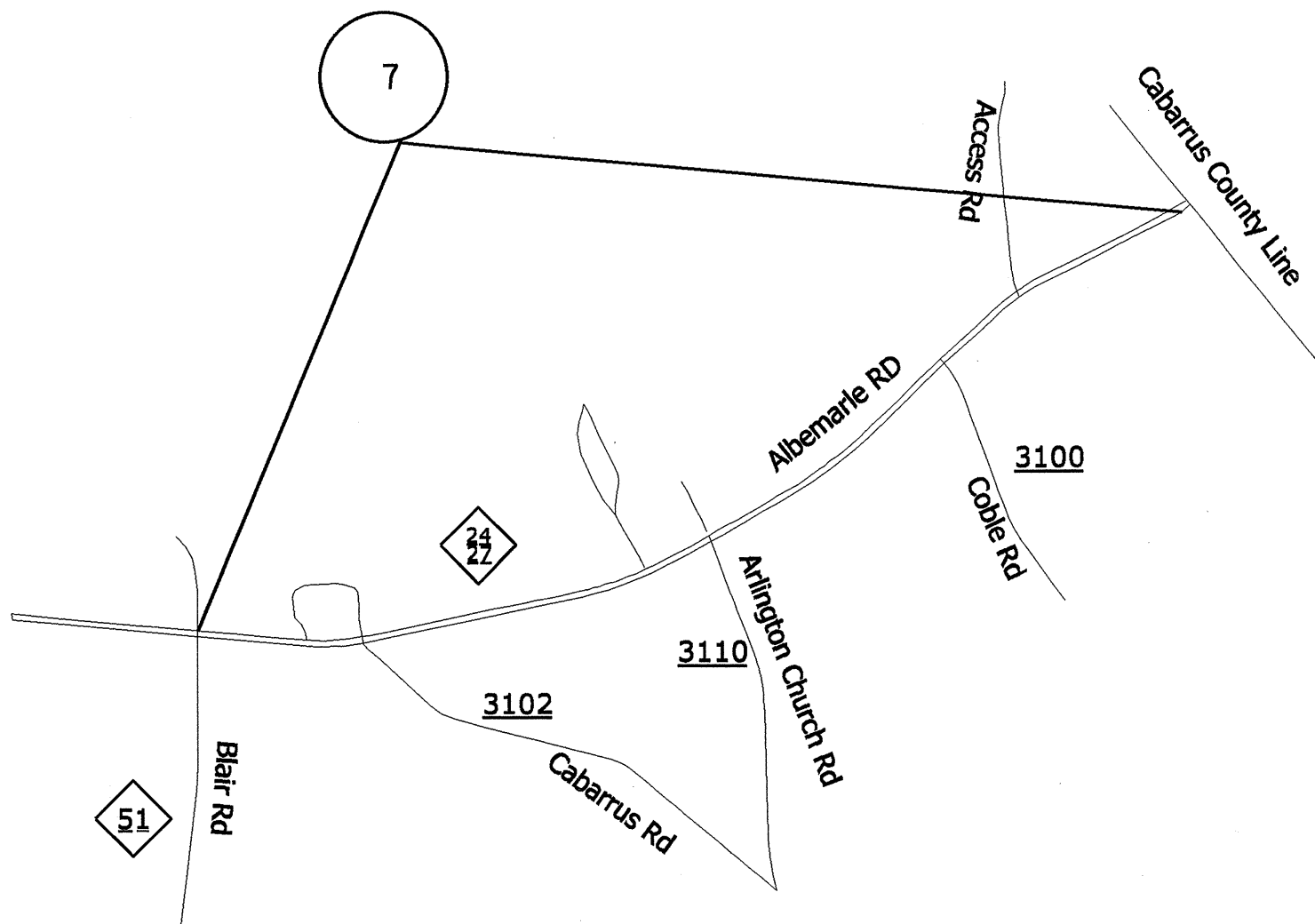
2011 MECKLENBURG COUNTY
RESURFACING

SCALE	-NA-
DATE	01/11
DWG. BY	JSL
DESIGN BY	JSL
APPROVED	



REVISIONS	

STATE	PROJECT NO.	SHEET NO.	TOTAL SHEETS
N.C.	IOCR.10601.33, etc.	6	



MAP

DESCRIPTION

7 ALBEMARLE RD (NC 24/27)

FROM CABARRUS COUNTY LINE TO BLAIR RD (NC 51)

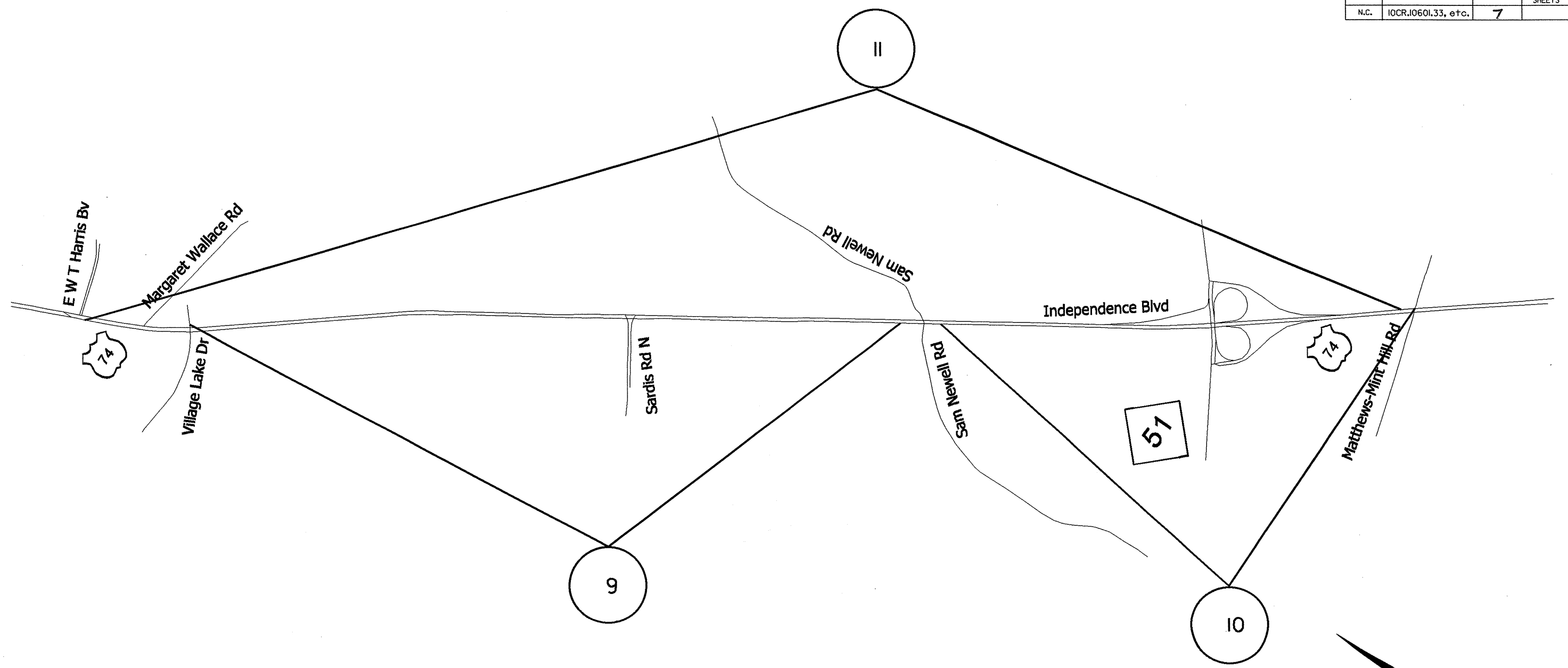
8 ALBEMARLE RD (NC 24/27)

WILGROVE-MINTHILL RD (SR 5223) TO PVT JT WEST OF WILGROVE-MINTHILL (SR 5223)

2011 MECKLENBURG COUNTY RESURFACING

SCALE	-NA-		REVISIONS
DATE	01/11		
DWG. BY	JSL		
DESIGN BY	JSL		
APPROVED			

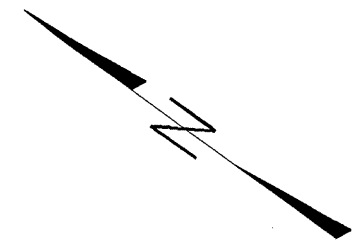
STATE	PROJECT NO.	SHEET NO.	TOTAL SHEETS
N.C.	10CR.10601.33, etc.	7	



MAP

DESCRIPTION

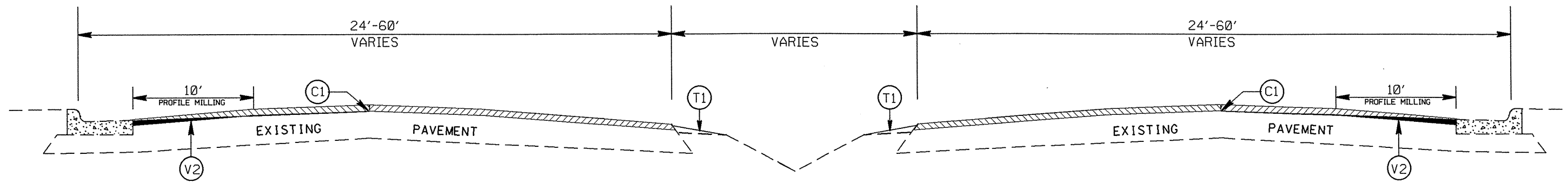
- | | |
|---|--|
| <p>9 EB INDEPENDENCE BLVD (US 74)</p> <p>10 EB INDEPENDENCE BLVD (US 74)</p> <p>11 WB INDEPENDENCE BLVD (US 74)</p> | <p>FROM EAST VILLAGE DR TO PVT JT WEST OF SAM NEWELL RD (SR 3474)</p> <p>FROM PVT JT EAST OF SAM NEWELL RD (SR 3474) TO MATTHEWS-MINTHILL RD (OLD NC 51)</p> <p>FROM MATTHEWS-MINTHILL RD (OLD NC 51) TO HARRIS BLVD</p> |
|---|--|



2011 MECKLENBURG COUNTY
RESURFACING

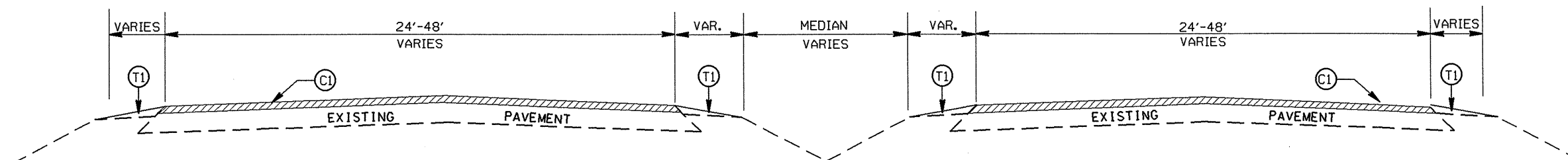
SCALE	-NA-		REVISIONS
DATE	01/11		
DWG. BY	JSL		
DESIGN BY	JSL		
APPROVED			

STATE	PROJECT NO.	SHEET NO.	TOTAL SHEETS
N.C.		8	
IOCR.I0601.33, ETC.			



TYPICAL SECTION NO. 2

PAVEMENT SCHEDULE	
C1	PROP. APPROX. 1.5" ASPHALT CONCRETE SURFACE COURSE, TYPE S9.5C, AT AN AVERAGE RATE OF 168 LBS. PER SQ. YD.
D1	PROP. APPROX. 2.5" ASPHALT CONCRETE INTERMEDIATE COURSE, TYPE I19.0C AT AN AVERAGE RATE OF 285 LBS. PER SQ. YD.
T1	SHOULDER RECONSTRUCTION.
V1	MILLING 1.5" DEPTH
V2	PROFILE MILLING 0" TO 1.5"

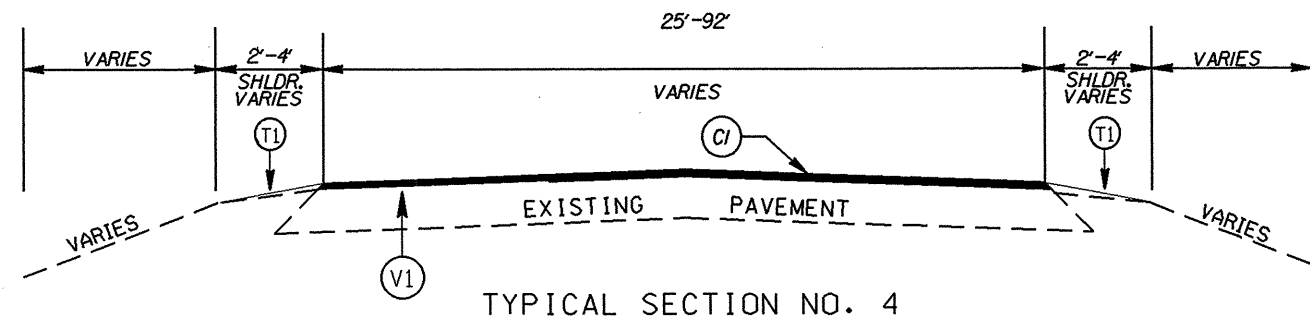


TYPICAL SECTION NO.1

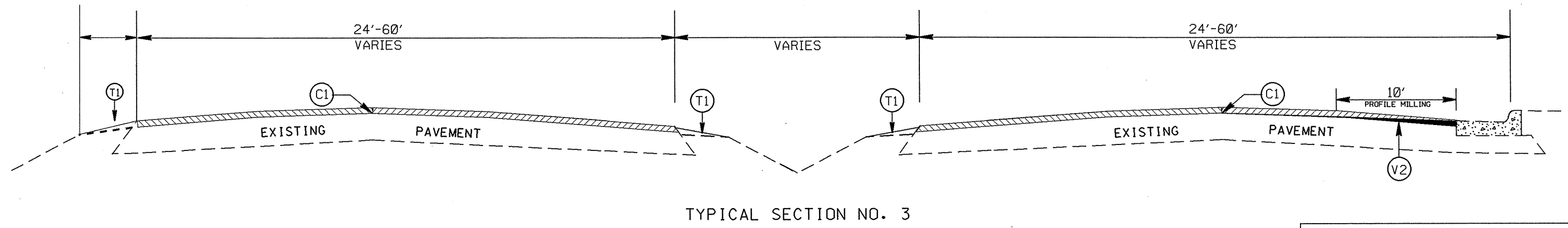
2011 MECKLENBURG COUNTY
RESURFACING

SCALE	-NA-		REVISIONS
DATE	01/11		
DWG. BY	JSL		
DESIGN BY	JSL		
APPROVED	LM		

STATE	PROJECT NO.	SHEET NO.	TOTAL SHEETS
N.C.		9	
IOCR.10601.33, ETC.			



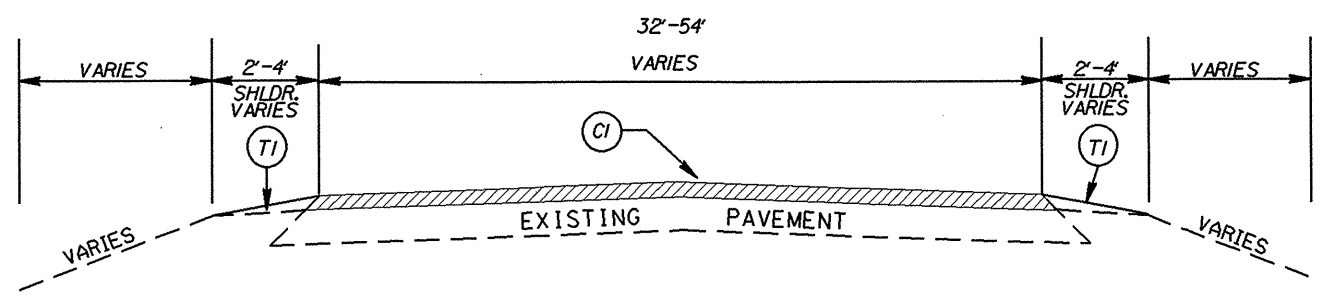
PAVEMENT SCHEDULE	
C1	PROP. APPROX. 1.5" ASPHALT CONCRETE SURFACE COURSE, TYPE S9.5C, AT AN AVERAGE RATE OF 168 LBS. PER SQ. YD.
D1	PROP. APPROX. 2.5" ASPHALT CONCRETE INTERMEDIATE COURSE, TYPE I19.0C, AT AN AVERAGE RATE OF 285 LBS. PER SQ. YD.
T1	SHOULDER RECONSTRUCTION.
V1	MILLING 1.5" DEPTH
V2	PROFILE MILLING 0" TO 1.5"



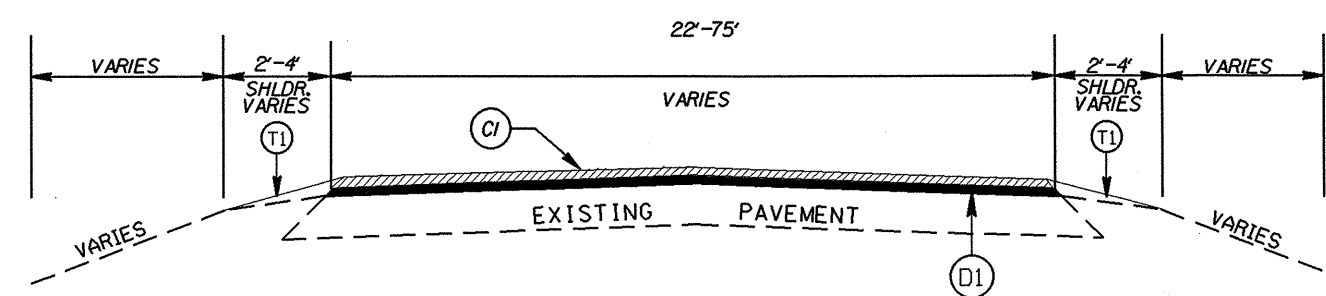
2011 MECKLENBURG COUNTY
RESURFACING

SCALE	-NA-		REVISIONS
DATE	01/11		
DWG. BY	JSL		
DESIGN BY	JSL		
APPROVED	LH		

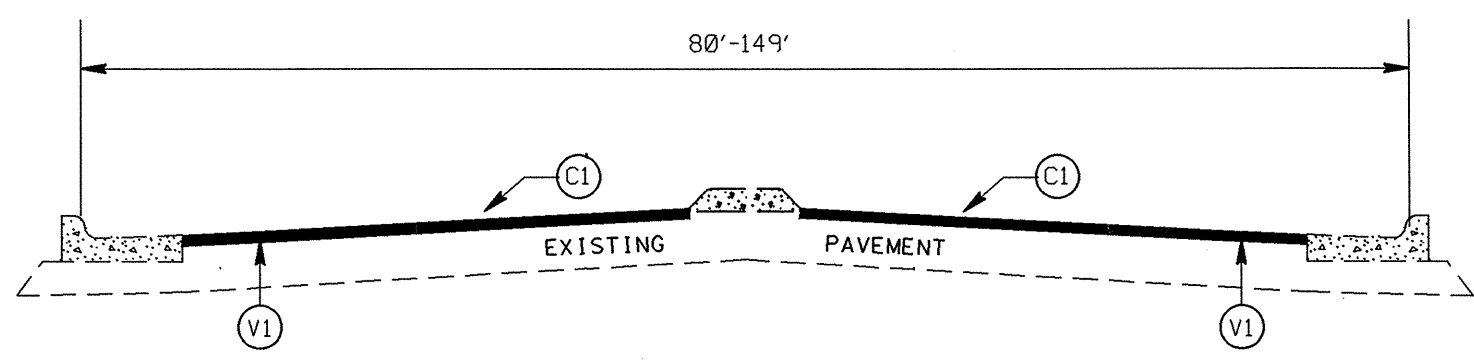
STATE	PROJECT NO.	SHEET NO.	TOTAL SHEETS
N.C.		10	
IOCR.10601.33, ETC.			



TYPICAL SECTION NO. 7



TYPICAL SECTION NO. 6



TYPICAL SECTION NO. 5

PAVEMENT SCHEDULE	
C1	PROP. APPROX. 1.5" ASPHALT CONCRETE SURFACE COURSE, TYPE S9.5C, AT AN AVERAGE RATE OF 188 LBS. PER SQ. YD.
D1	PROP. APPROX. 2.5" ASPHALT CONCRETE INTERMEDIATE COURSE, TYPE I19.0C, AT AN AVERAGE RATE OF 285 LBS. PER SQ. YD.
T1	SHOULDER RECONSTRUCTION.
V1	MILLING 1.5" DEPTH
V2	PROFILE MILLING 0" TO 1.5"

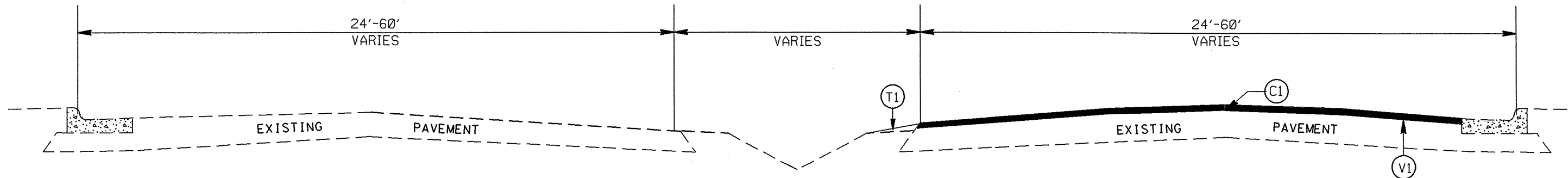
2011 MECKLENBURG COUNTY
RESURFACING

SCALE	-WA-
DATE	01/11
DWG. BY	JSL
DESIGN BY	JSL
APPROVED	LM



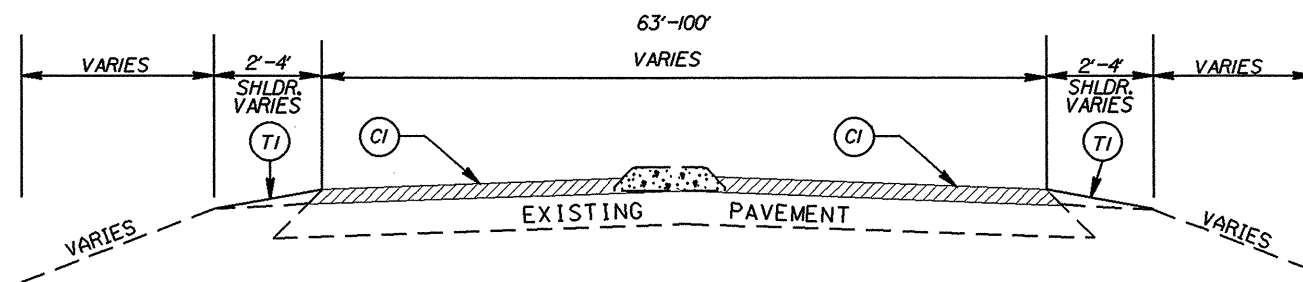
REVISIONS	

STATE	PROJECT NO.	SHEET NO.	TOTAL SHEETS
N.C.		11	
IOCR.10601.33, ETC.			



TYPICAL SECTION NO. 9

PAVEMENT SCHEDULE	
C1	PROP. APPROX. 1.5" ASPHALT CONCRETE SURFACE COURSE, TYPE S9.5C, AT AN AVERAGE RATE OF 168 LBS. PER SQ. YD.
D1	PROP. APPROX. 2.5" ASPHALT CONCRETE INTERMEDIATE COURSE, TYPE I19.00, AT AN AVERAGE RATE OF 285 LBS. PER SQ. YD.
T1	SHOULDER RECONSTRUCTION.
V1	MILLING 1.5" DEPTH
V2	PROFILE MILLING 0" TO 1.5"

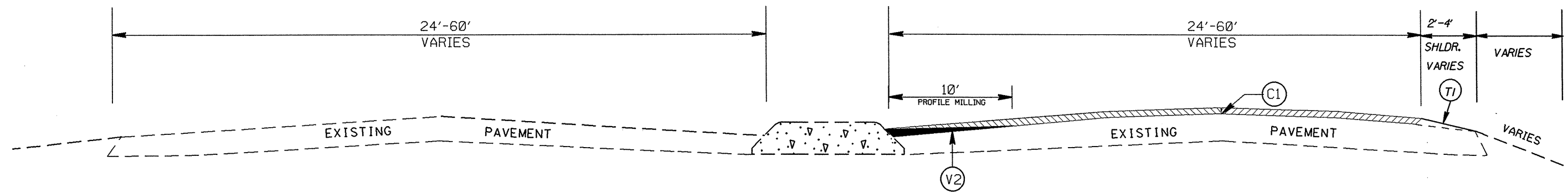


TYPICAL SECTION NO. 8

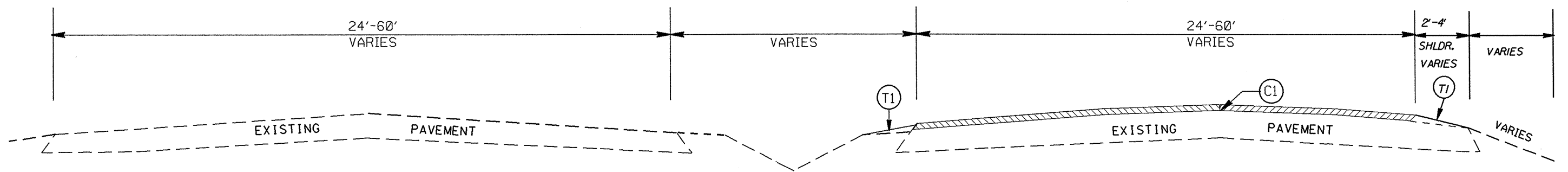
2011 MECKLENBURG COUNTY
RESURFACING

SCALE	-NA-		REVISIONS
DATE	01/11		
DWG. BY	JSL		
DESIGN BY	JSL		
APPROVED	LM		

STATE	PROJECT NO.	SHEET NO.	TOTAL SHEETS
N.C.		12	
IOCR.I0601.33, ETC.			




TYPICAL SECTION NO. 11



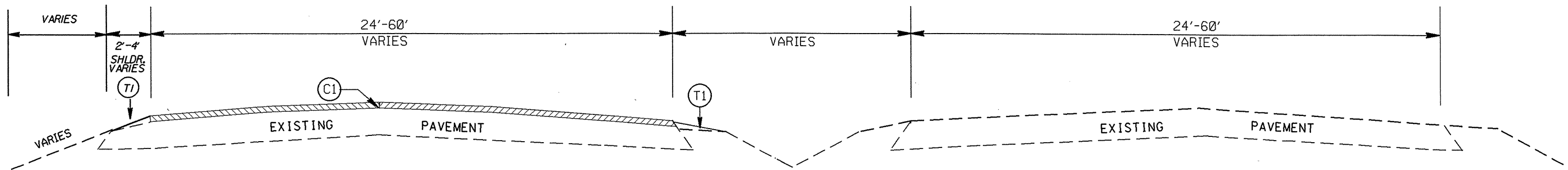
TYPICAL SECTION NO. 10

PAVEMENT SCHEDULE	
C1	PROP. APPROX. 1.5" ASPHALT CONCRETE SURFACE COURSE, TYPE S9.5C, AT AN AVERAGE RATE OF 168 LBS. PER SQ. YD.
D1	PROP. APPROX. 2.5" ASPHALT CONCRETE INTERMEDIATE COURSE, TYPE I19.0C, AT AN AVERAGE RATE OF 285 LBS. PER SQ. YD.
T1	SHOULDER RECONSTRUCTION.
V1	MILLING 1.5" DEPTH
V2	PROFILE MILLING 0" TO 1.5"

2011 MECKLENBURG COUNTY
RESURFACING

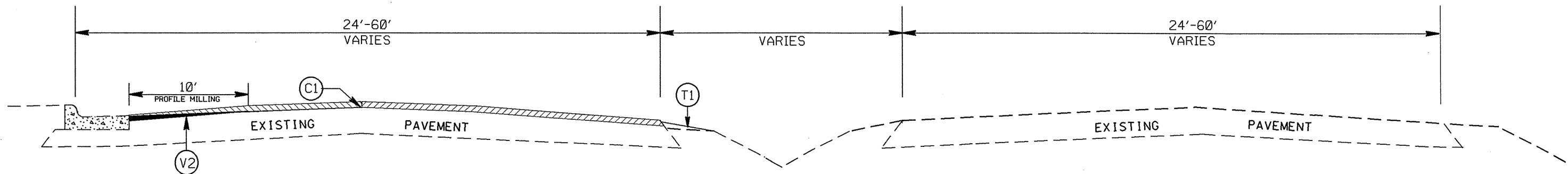
SCALE	-NA-		REVISIONS
DATE	01/11		
DWG. BY	JSL		
DESIGN BY	JSL		
APPROVED	LM		

STATE	PROJECT NO.	SHEET NO.	TOTAL SHEETS
N.C.		13	
IOCR.10601.33, ETC.			



TYPICAL SECTION NO. 13

PAVEMENT SCHEDULE	
C1	PROP. APPROX. 1.5" ASPHALT CONCRETE SURFACE COURSE, TYPE S9.5C, AT AN AVERAGE RATE OF 168 LBS. PER SQ. YD.
D1	PROP. APPROX. 2.5" ASPHALT CONCRETE INTERMEDIATE COURSE, TYPE I19.0C, AT AN AVERAGE RATE OF 285 LBS. PER SQ. YD.
T1	SHOULDER RECONSTRUCTION.
V1	MILLING 1.5" DEPTH
V2	PROFILE MILLING 0" TO 1.5"



TYPICAL SECTION NO. 12

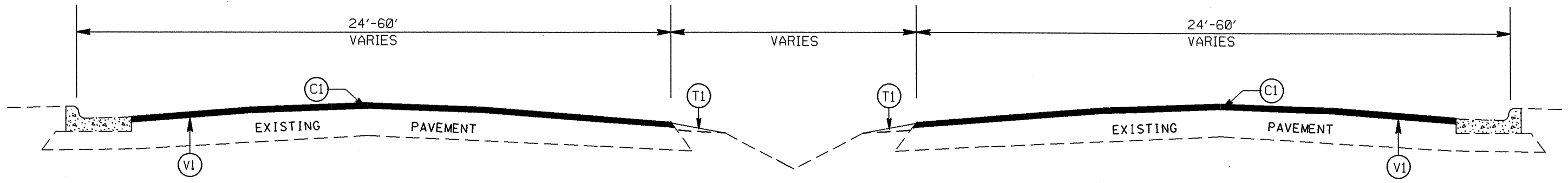
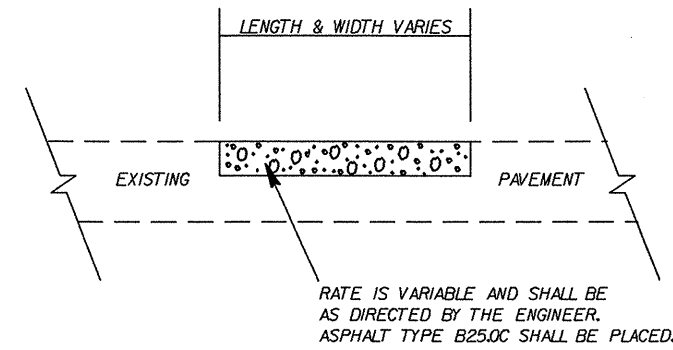
2011 MECKLENBURG COUNTY
RESURFACING

SCALE	-NA-		REVISIONS
DATE	01/11		
DWG. BY	JSL		
DESIGN BY	JSL		
APPROVED	LM		

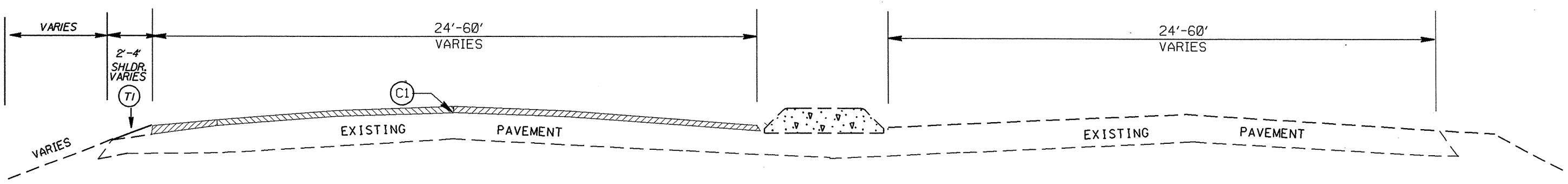
STATE	PROJECT NO.	SHEET NO.	TOTAL SHEETS
N.C.		14	
IOCR.I0601.33, ETC.			

PAVEMENT SCHEDULE	
C1	PROP. APPROX. 1.5" ASPHALT CONCRETE SURFACE COURSE, TYPE S9.5C, AT AN AVERAGE RATE OF 168 LBS. PER SQ. YD.
D1	PROP. APPROX. 2.5" ASPHALT CONCRETE INTERMEDIATE COURSE, TYPE I19.0C, AT AN AVERAGE RATE OF 285 LBS. PER SQ. YD.
T1	SHOULDER RECONSTRUCTION.
V1	MILLING 1.5" DEPTH
V2	PROFILE MILLING 0" TO 1.5"

PATCHING DETAIL



TYPICAL SECTION NO. 15



TYPICAL SECTION NO. 14

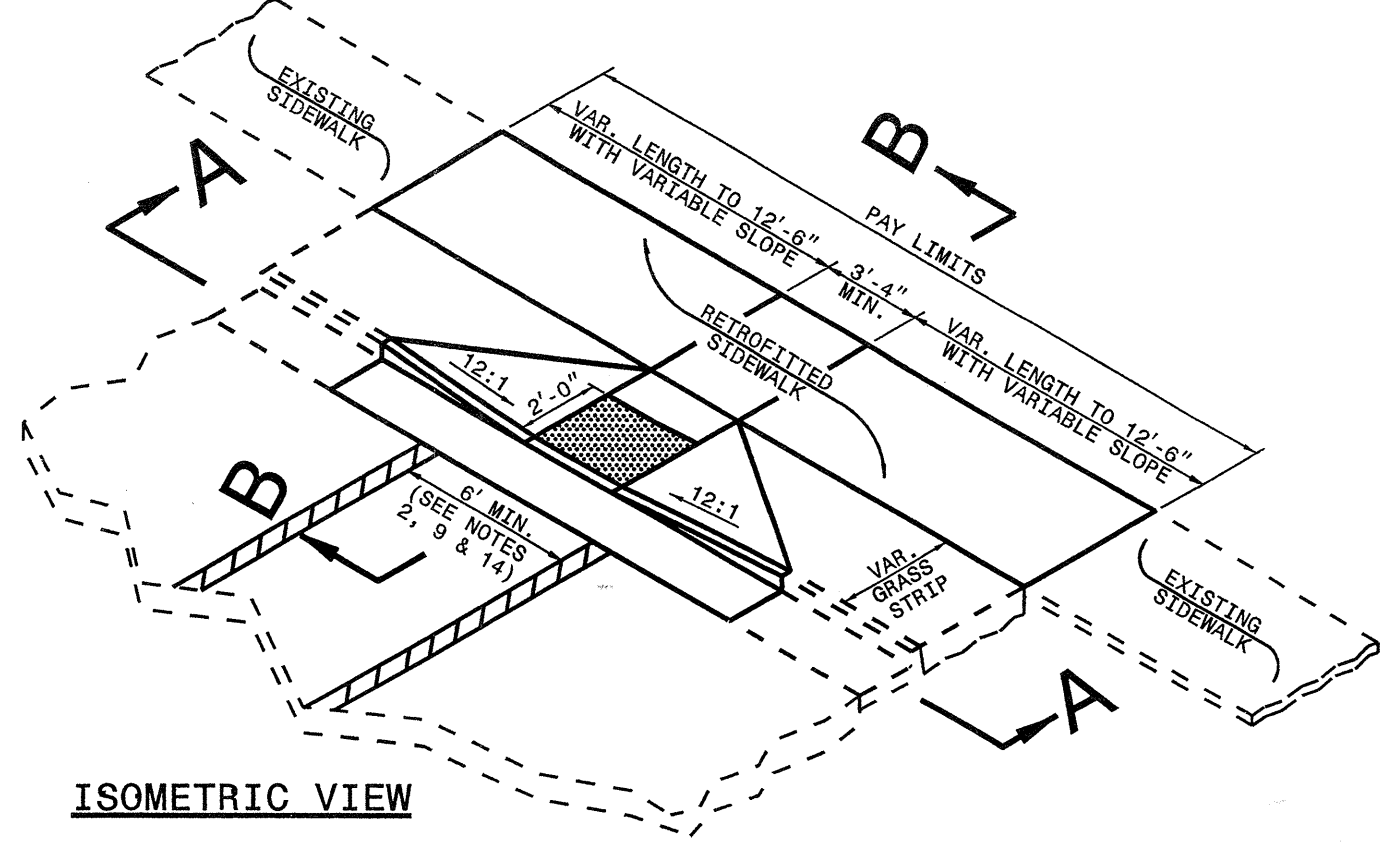
2011 MECKLENBURG COUNTY RESURFACING

SCALE	-NA-		REVISIONS
DATE	01/11		
DWG. BY	JSL		
DESIGN BY	JSL		
APPROVED			

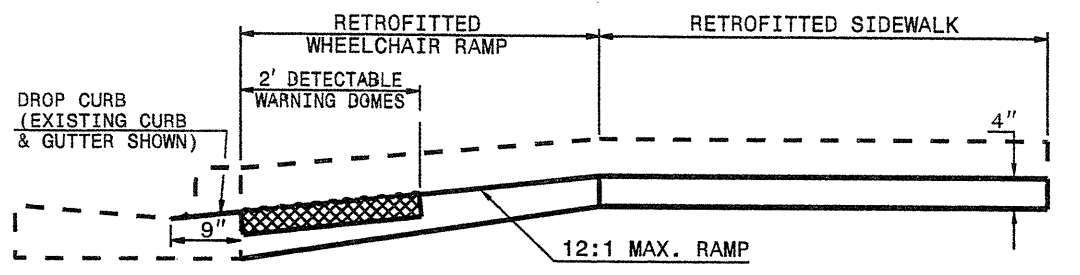
STATE OF NORTH CAROLINA
DEPT. OF TRANSPORTATION
DIVISION OF HIGHWAYS
RALEIGH, N.C.

STATE OF NORTH CAROLINA
DEPT. OF TRANSPORTATION
DIVISION OF HIGHWAYS
RALEIGH, N.C.

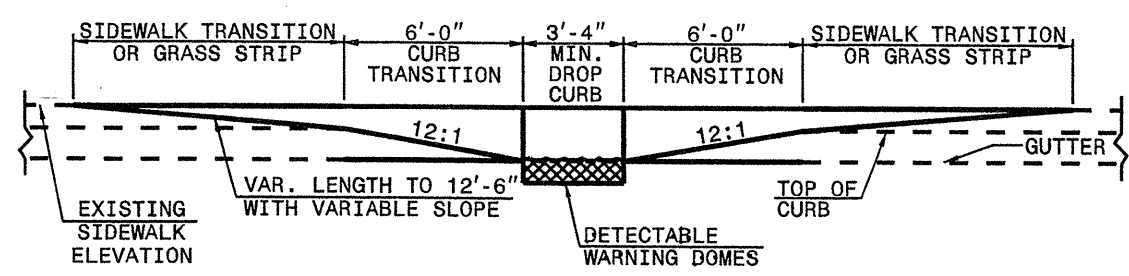
WHEELCHAIR RAMP AND EXISTING SIDEWALK WITH GRASS STRIP



ISOMETRIC VIEW

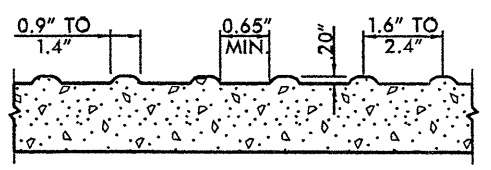
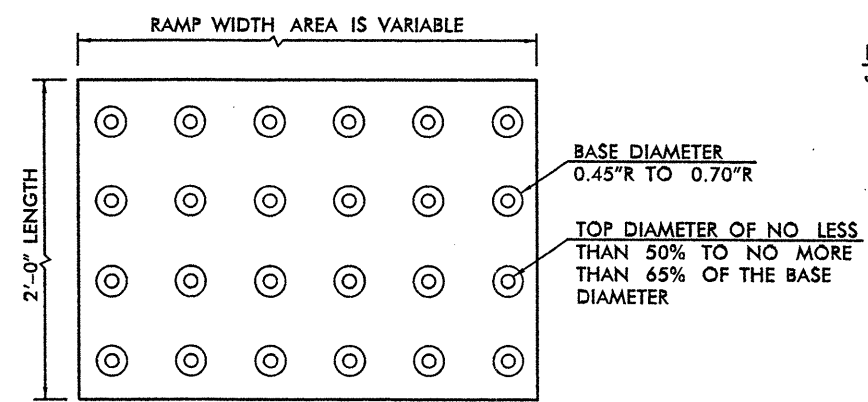


SECTION B-B

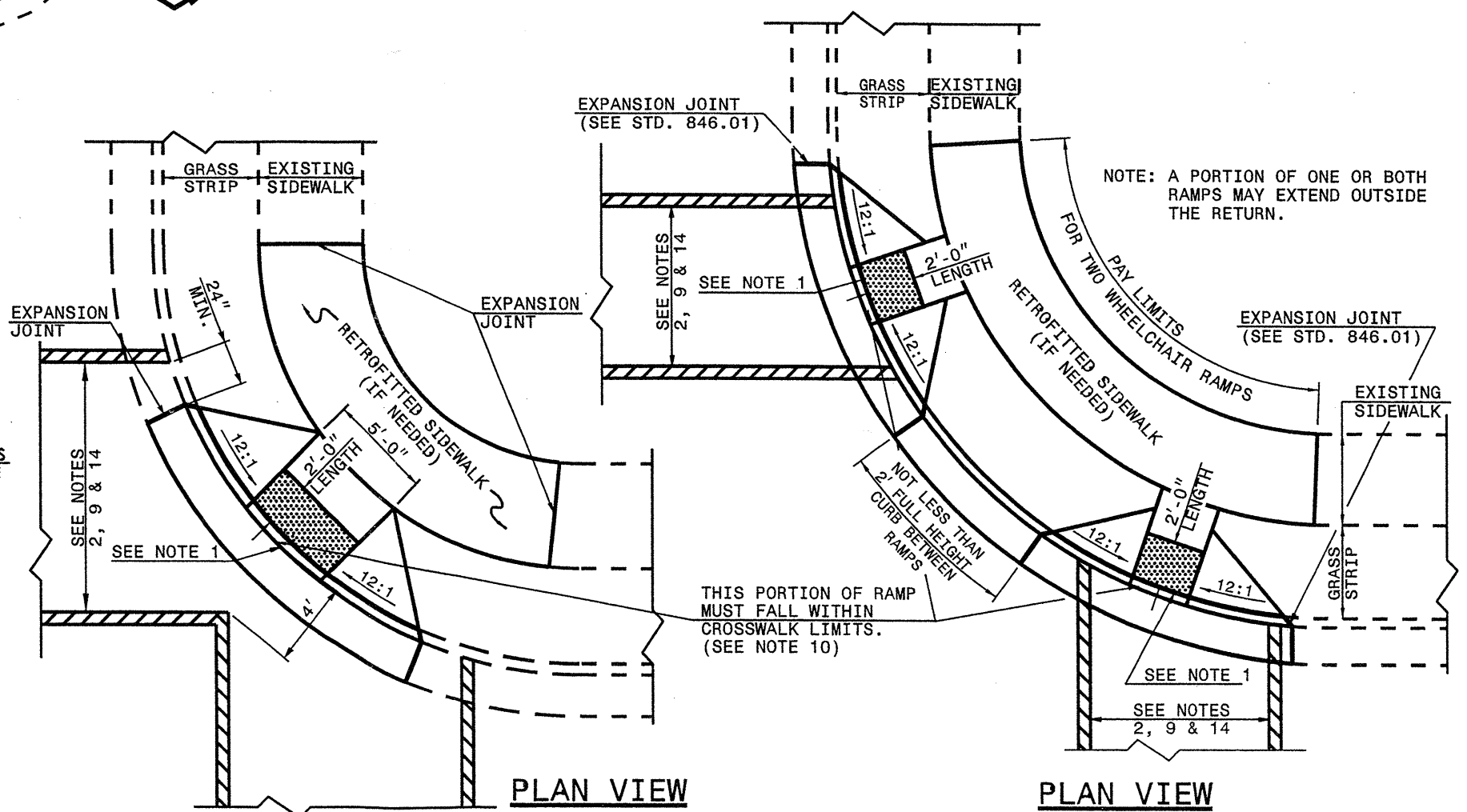


SECTION A-A

- NOTES:
1. DETECTABLE WARNING DOMES SHALL COVER 2'-0" LENGTH AND FULL WIDTH OF THE RAMP FLOOR AS SHOWN ON THE DETAILS.
 2. OBTAIN 70% CONTRAST VISIBILITY WITH ADJOINING SURFACE, EITHER LIGHT-ON-DARK, OR DARK-ON-LIGHT SEQUENCE COVERING THE ENTIRE RAMP.



DETECTABLE WARNING DOMES



PLAN VIEW

DIAGONAL RAMP
MAX. 25' RADII
(60" MIN. FLOOR WIDTH)

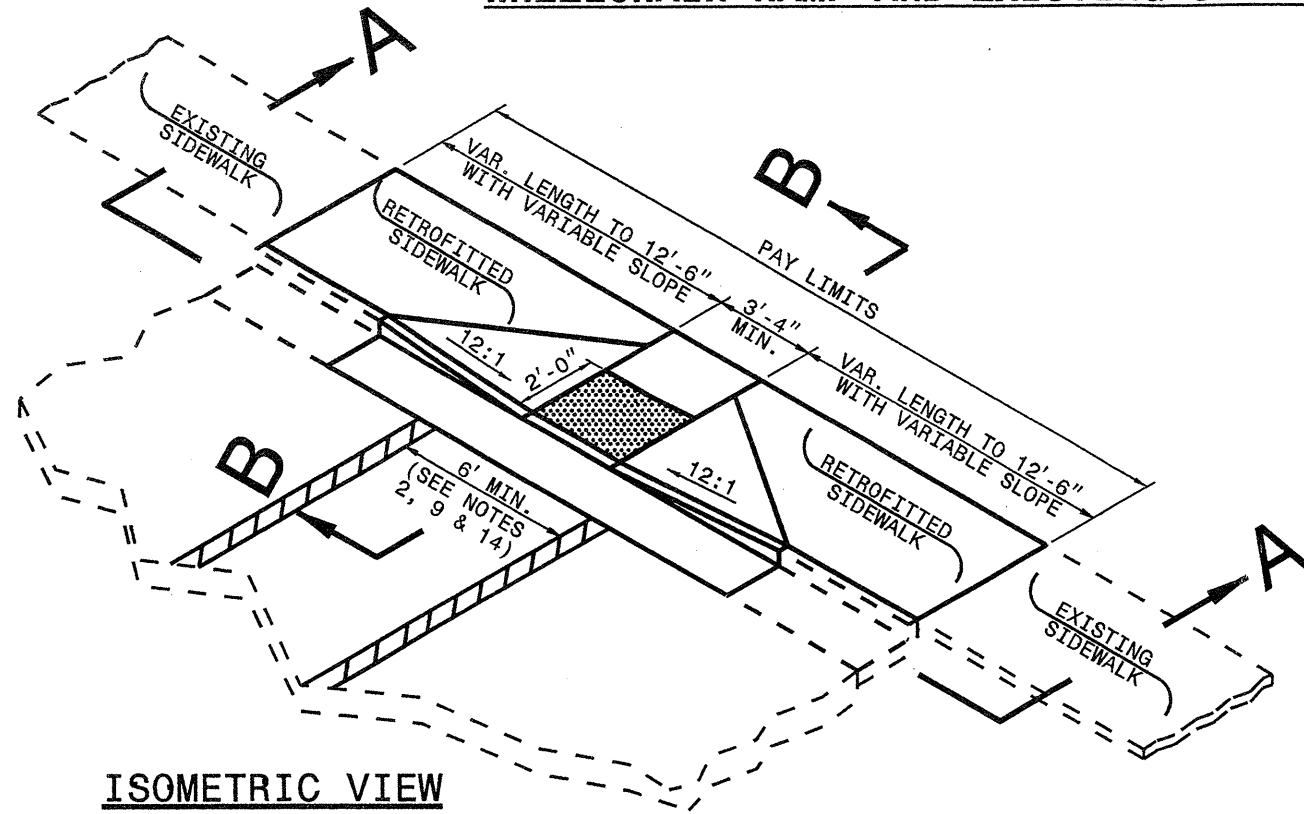
PLAN VIEW

DUAL RAMPS
ANY RADII
(40" MIN. FLOOR WIDTH)

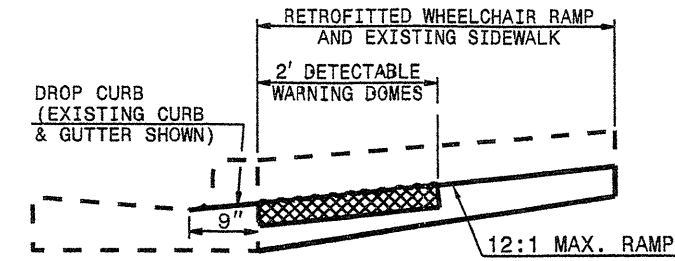
ENGLISH DETAIL DRAWING FOR
WHEELCHAIR RAMP
EXISTING CURB AND GUTTER

ENGLISH DETAIL DRAWING FOR
WHEELCHAIR RAMP
EXISTING CURB AND GUTTER

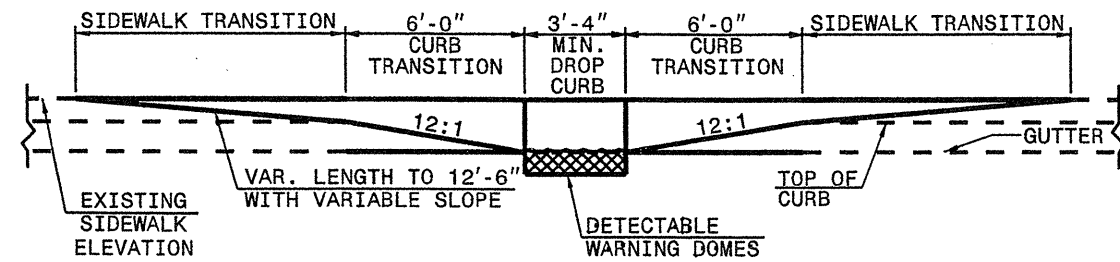
WHEELCHAIR RAMP AND EXISTING SIDEWALK ADJACENT TO CURB



ISOMETRIC VIEW

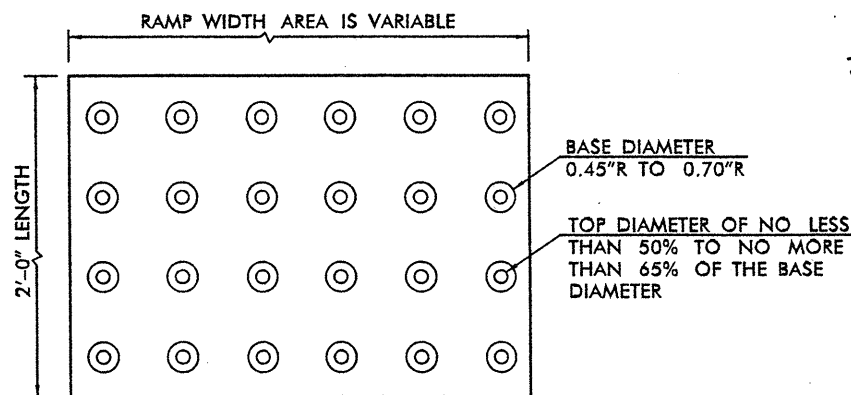


SECTION B-B

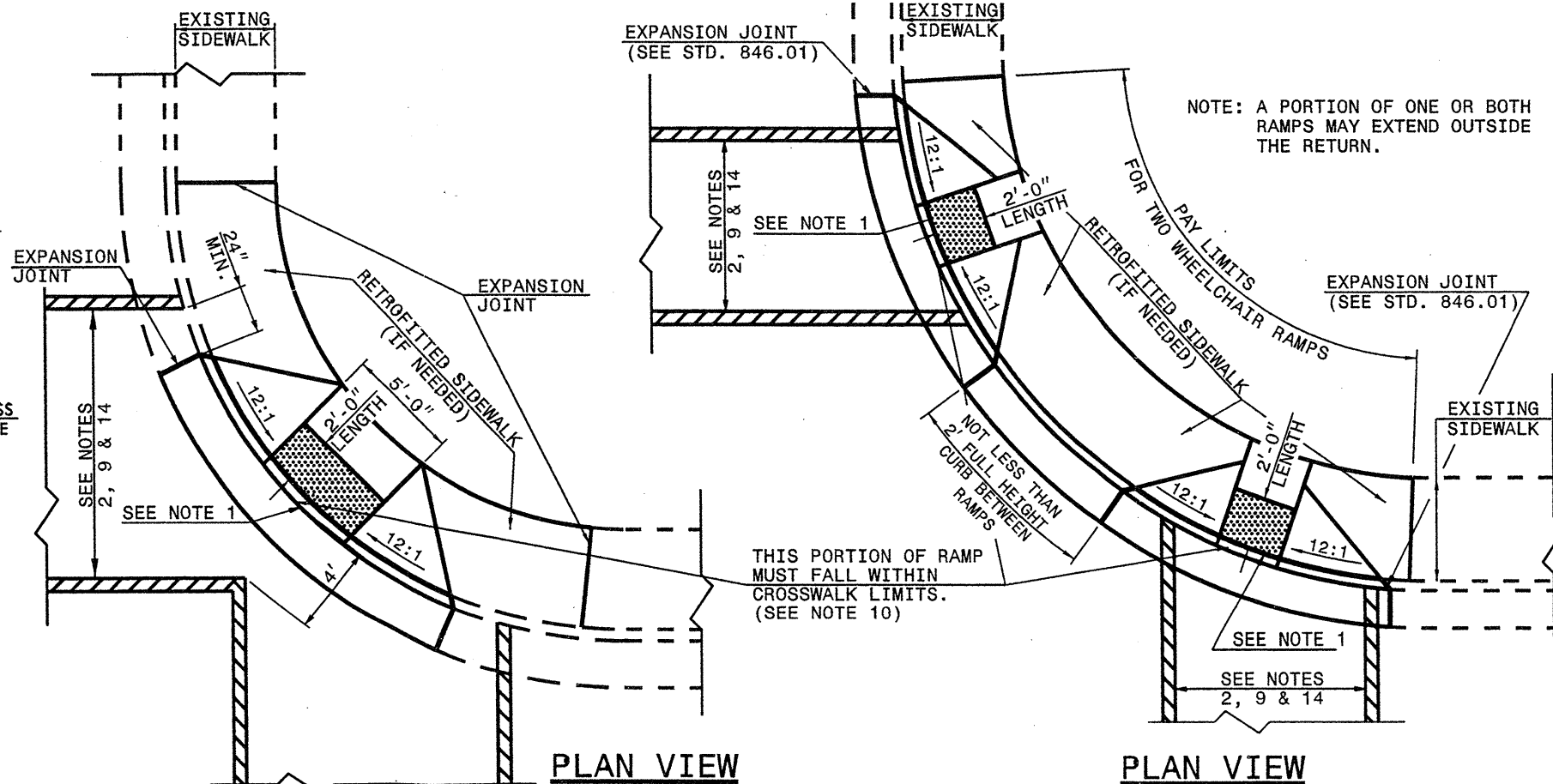


SECTION A-A

- NOTES:
1. DETECTABLE WARNING DOMES SHALL COVER 2'-0" LENGTH AND FULL WIDTH OF THE RAMP FLOOR AS SHOWN ON THE DETAILS.
 2. OBTAIN 70% CONTRAST VISIBILITY WITH ADJOINING SURFACE, EITHER LIGHT-ON-DARK, OR DARK-ON-LIGHT SEQUENCE COVERING THE ENTIRE RAMP.



DETECTABLE WARNING DOMES



PLAN VIEW

DIAGONAL RAMP
MAX. 25' RADII
(60" MIN. FLOOR WIDTH)

PLAN VIEW

DUAL RAMPS
ANY RADII
(40" MIN. FLOOR WIDTH)

STATE OF NORTH CAROLINA
DEPT. OF TRANSPORTATION
DIVISION OF HIGHWAYS
RALEIGH, N.C.

ENGLISH DETAIL DRAWING FOR
WHEELCHAIR RAMP
EXISTING CURB AND GUTTER

STATE OF NORTH CAROLINA
DEPT. OF TRANSPORTATION
DIVISION OF HIGHWAYS
RALEIGH, N.C.

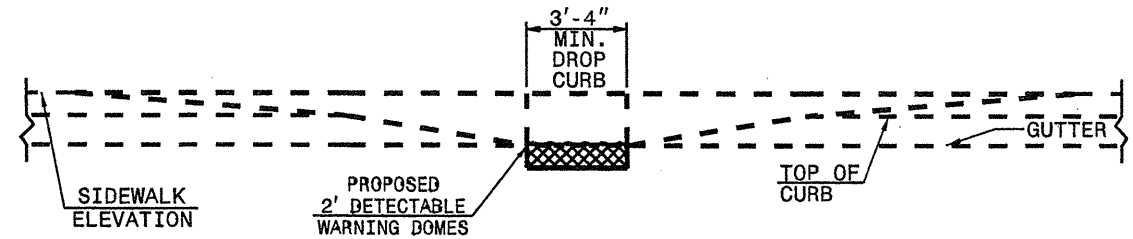
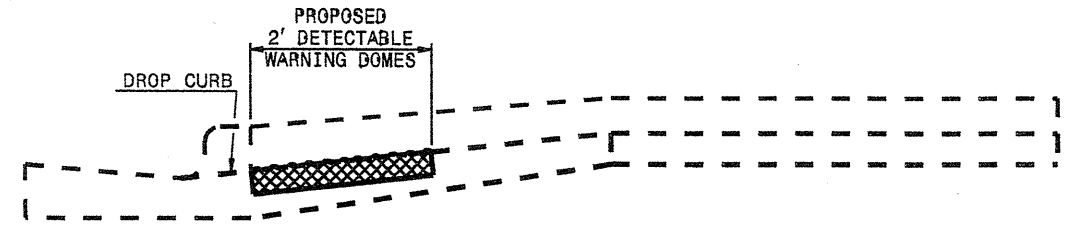
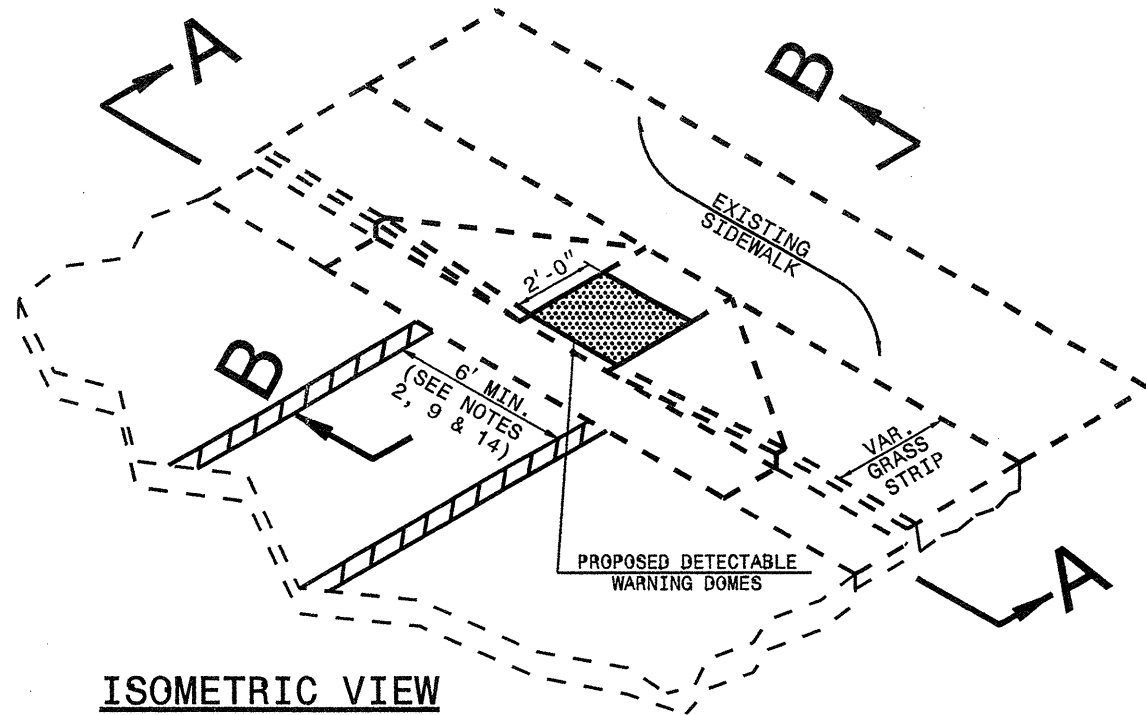
ENGLISH DETAIL DRAWING FOR
WHEELCHAIR RAMP
EXISTING CURB AND GUTTER

STATE OF
NORTH CAROLINA
DEPT. OF TRANSPORTATION
DIVISION OF HIGHWAYS
RALEIGH, N.C.

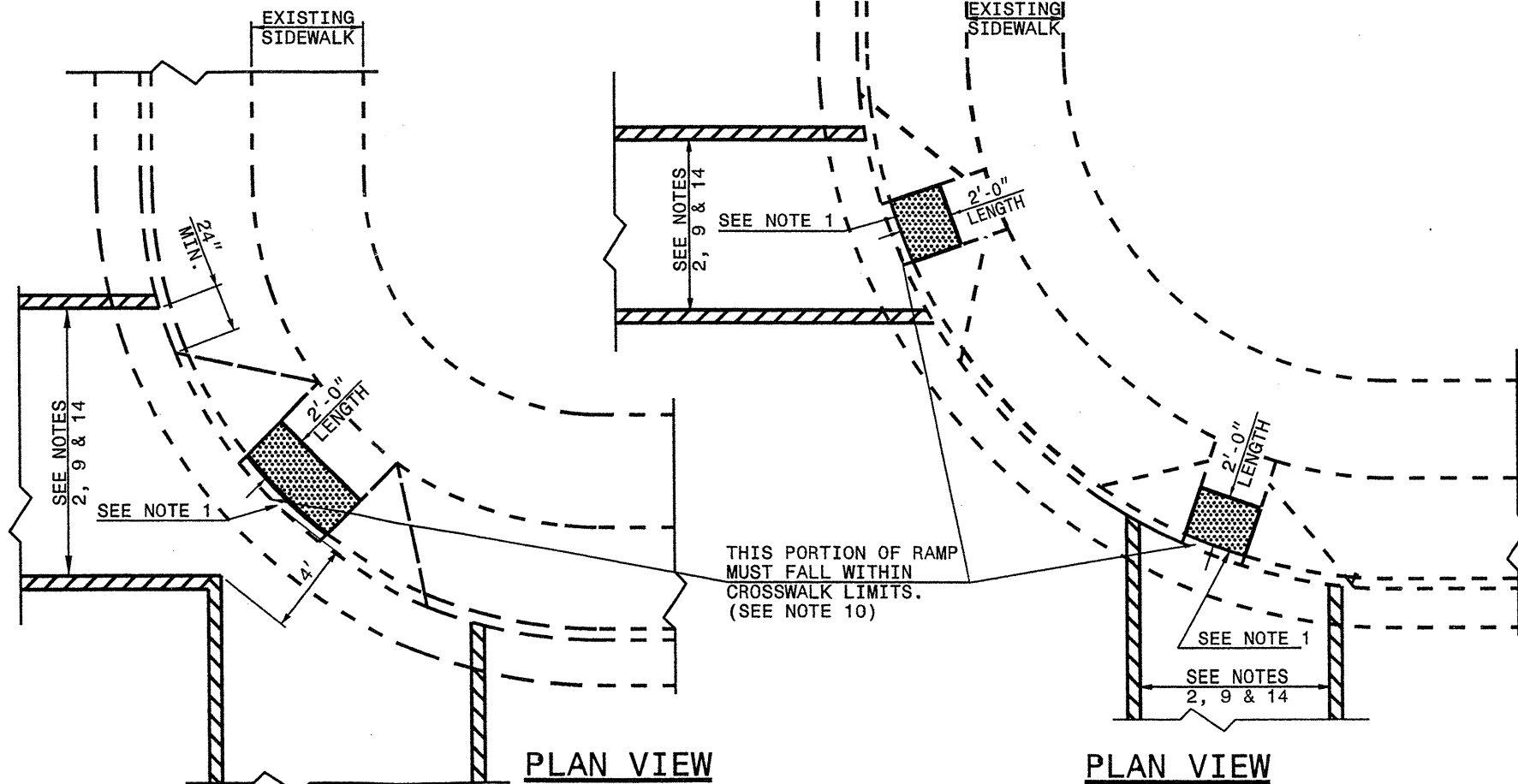
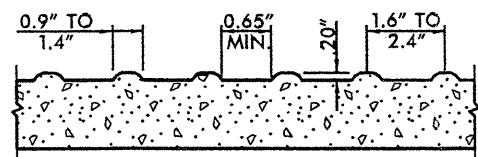
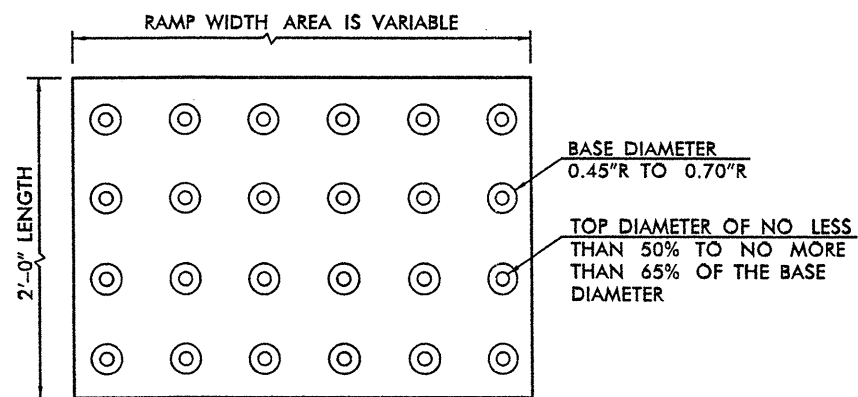
ENGLISH DETAIL DRAWING FOR
WHEELCHAIR RAMP
EXISTING CURB AND GUTTER

SHEET 3 OF 5
848D06

RETROFITTING DETECTABLE WARNING DOMES ONTO EXISTING WHEELCHAIR RAMP



- NOTES:
1. DETECTABLE WARNING DOMES SHALL COVER 2'-0" LENGTH AND FULL WIDTH OF THE RAMP FLOOR AS SHOWN ON THE DETAILS.
 2. OBTAIN 70% CONTRAST VISIBILITY WITH ADJOINING SURFACE, EITHER LIGHT-ON-DARK, OR DARK-ON-LIGHT SEQUENCE COVERING THE ENTIRE RAMP.



DIAGONAL RAMP
MAX. 25' RADII
(60" MIN. FLOOR WIDTH)

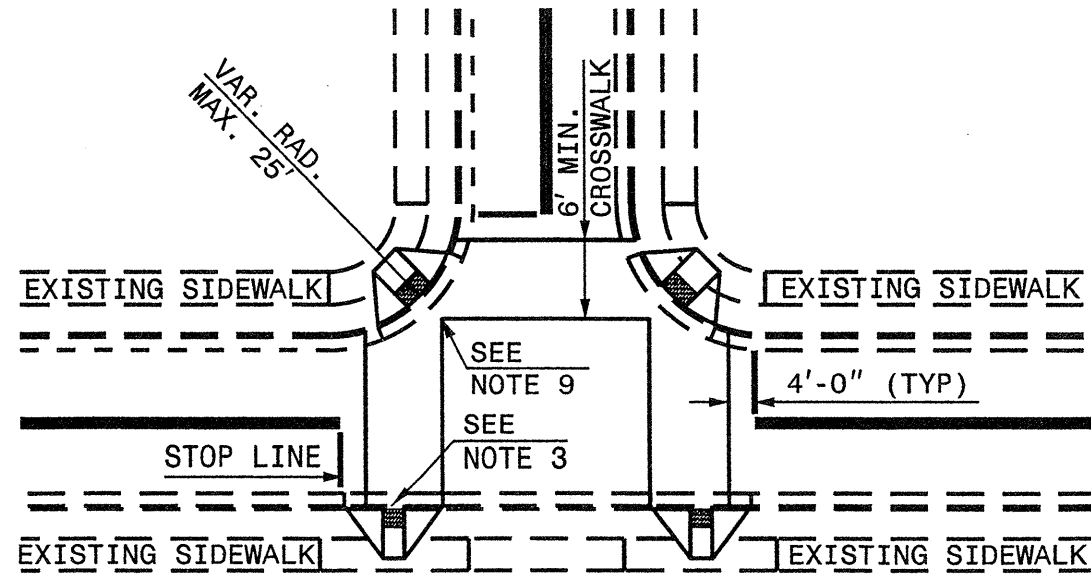
DUAL RAMPS
ANY RADII
(40" MIN. FLOOR WIDTH)

STATE OF
NORTH CAROLINA
DEPT. OF TRANSPORTATION
DIVISION OF HIGHWAYS
RALEIGH, N.C.

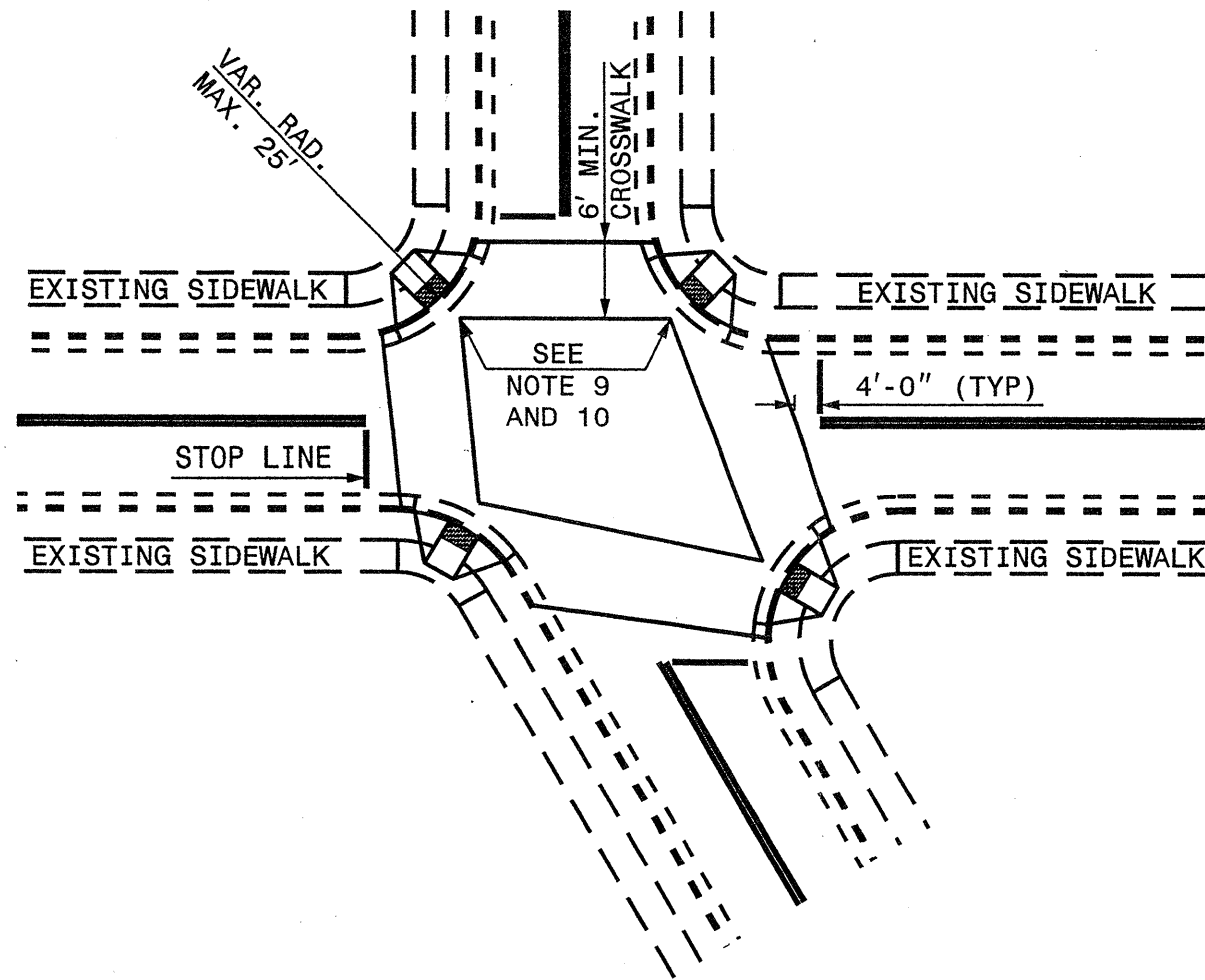
ENGLISH DETAIL DRAWING FOR
WHEELCHAIR RAMP
EXISTING CURB AND GUTTER

SHEET 3 OF 5
848D06

WHEELCHAIR RAMP AND EXISTING SIDEWALK

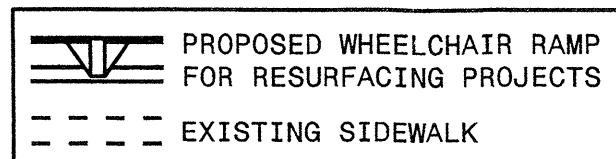


DETAIL SHOWING TYPICAL LOCATION OF WHEELCHAIR RAMP,
PEDESTRIAN CROSSWALKS AND STOP LINES FOR TEE INTERSECTIONS



DETAIL SHOWING TYPICAL LOCATION OF WHEELCHAIR
RAMP, PEDESTRIAN CROSSWALKS AND STOP LINES

RESURFACING PROJECTS



ALLOWABLE LOCATIONS

DIAGONAL RAMP RADII...MAX. 25'

STATE OF
NORTH CAROLINA
DEPT. OF TRANSPORTATION
DIVISION OF HIGHWAYS
RALEIGH, N.C.

ENGLISH DETAIL DRAWING FOR
WHEELCHAIR RAMP
EXISTING CURB AND GUTTER

STATE OF
NORTH CAROLINA
DEPT. OF TRANSPORTATION
DIVISION OF HIGHWAYS
RALEIGH, N.C.

ENGLISH DETAIL DRAWING FOR
WHEELCHAIR RAMP
EXISTING CURB AND GUTTER

WHEELCHAIR RAMP AND EXISTING SIDEWALK

NOTES:

1. CONSTRUCT THE WALKING SURFACE WITH SLIP RESISTANCE AND A 70% CONTRASTING COLOR TO THE SIDEWALK.
2. CROSSWALK WIDTHS AND CONFIGURATION VARY, BUT MUST CONFORM TO TRAFFIC DESIGN STANDARDS.
3. NORTH CAROLINA GENERAL STATUTE 136-44.14 REQUIRES THAT ALL STREET CURBS BEING CONSTRUCTED OR RECONSTRUCTED FOR MAINTENANCE PROCEDURES, TRAFFIC OPERATIONS, REPAIRS, CORRECTION OF UTILITIES OR ALTERED FOR ANY REASON AFTER SEPTEMBER 1, 1973 SHALL PROVIDE WHEELCHAIR RAMPS FOR THE PHYSICALLY DISABLED AT ALL INTERSECTIONS WHERE BOTH CURB AND GUTTER AND SIDEWALKS ARE PROVIDED AND AT OTHER POINTS OF PEDESTRIAN FLOW.

IN ADDITION, SECTION 228 OF THE 1973 FEDERAL AID HIGHWAY SAFETY ACT REQUIRES PROVISION OF CURB RAMPS ON ANY CURB CONSTRUCTION AFTER JULY 1, 1976 WHETHER A SIDEWALK IS PROPOSED INITIALLY OR IS PLANNED FOR A FUTURE DATE.

THE AMERICANS WITH DISABILITIES ACT (ADA) OF 1990 EXTENDS TO INDIVIDUALS WITH DISABILITIES, COMPREHENSIVE CIVIL RIGHTS PROTECTIONS SIMILAR TO THOSE PROVIDED TO PERSONS ON THE BASIS OF RACE, SEX, NATIONAL ORIGIN AND RELIGION UNDER THE CIVIL RIGHTS ACT OF 1964. THESE CURB RAMPS HAVE BEEN DESIGNED TO COMPLY WITH THE CURRENT ADA STANDARDS.
4. PROVIDE WHEELCHAIR RAMPS AT LOCATIONS AS SHOWN ON THE PLANS OR AS DIRECTED BY THE ENGINEER. LOCATE WHEELCHAIR RAMPS AS DIRECTED BY THE ENGINEER WHERE EXISTING LIGHT POLES, FIRE HYDRANTS, DROP INLETS, ETC. AFFECT PLACEMENT. WHERE TWO RAMPS ARE INSTALLED PLACE NOT LESS THAN 2 FEET OF FULL HEIGHT CURB BETWEEN THE RAMPS. PLACE DUAL RAMPS AS NEAR PERPENDICULAR TO THE TRAVEL LANE BEING CROSSED AS POSSIBLE.
5. DO NOT EXCEED 0.08 (12:1) SLOPE ON THE WHEELCHAIR RAMP IN RELATIONSHIP TO THE GRADE OF THE STREET.
6. CONSTRUCT WHEELCHAIR RAMPS 40" (3'-4") OR GREATER FOR DUAL RAMPS AND 60" (5'-0") OR GREATER FOR DIAGONAL RAMPS.
7. USE CLASS "B" CONCRETE WITH A SIDEWALK FINISH IN ORDER TO OBTAIN A ROUGH NON-SKID TYPE SURFACE.
8. PLACE A 1/2" EXPANSION JOINT WHERE THE CONCRETE WHEELCHAIR RAMP JOINS THE CURB AND AS SHOWN ON STD. DWG. 848.01.
9. PLACE THE INSIDE PEDESTRIAN CROSSWALK LINES NO CLOSER IN THE INTERSECTION BY BISECTING THE INTERSECTION RADII, WITH ALLOWANCE OF A 4' CLEAR ZONE IN THE VEHICULAR TRAVELWAY WHEN ONE RAMP IS INSTALLED. (SEE NOTE 14)
10. COORDINATE THE CURB CUT AND THE PEDESTRIAN CROSSWALK LINES SO THE FLOOR OF THE WHEELCHAIR RAMP WILL FALL WITHIN THE PEDESTRIAN CROSSWALK LINES. PLACE DIAGONAL RAMPS WITH FLARED SIDES SO 24" OF FULL HEIGHT CURB FALLS WITHIN THE CROSSWALK MARKINGS ON EACH SIDE OF THE FLARES.
11. CONSTRUCT THE PEDESTRIAN CROSSWALK A MINIMUM OF 6 FEET. A CROSSWALK WIDTH OF 10 FEET OR GREATER IS DESIRABLE.
12. USE STOP LINES, NORMALLY PERPENDICULAR TO THE LANE LINES, WHERE IT IS IMPORTANT TO INDICATE THE POINT BEHIND WHICH VEHICLES ARE REQUIRED TO STOP IN COMPLIANCE WITH A TRAFFIC SIGNAL, STOP SIGN OR OTHER LEGAL REQUIREMENT. AN UNUSUAL APPROACH SKEW MAY REQUIRE THE PLACEMENT OF THE STOP LINE TO BE PARALLEL TO THE INTERSECTING ROADWAY.
13. TERMINATE PARKING A MINIMUM OF 20 FEET BACK OF PEDESTRIAN CROSSWALK.
14. PLACE ALL PAVEMENT MARKINGS IN ACCORDANCE WITH THE LATEST EDITION OF THE MANUAL OF UNIFORM TRAFFIC CONTROL DEVICES (MUTCD) PUBLISHED BY THE FEDERAL HIGHWAY ADMINISTRATION AND THE NORTH CAROLINA SUPPLEMENT TO THE MUTCD.

STATE OF NORTH CAROLINA
DEPT. OF TRANSPORTATION
DIVISION OF HIGHWAYS
RALEIGH, N.C.

ENGLISH DETAIL DRAWING FOR
WHEELCHAIR RAMP
EXISTING CURB AND GUTTER

STATE OF NORTH CAROLINA
DEPT. OF TRANSPORTATION
DIVISION OF HIGHWAYS
RALEIGH, N.C.

ENGLISH DETAIL DRAWING FOR
WHEELCHAIR RAMP
EXISTING CURB AND GUTTER

PROJECT NO.	SHEET NO.	TOTAL NO.
10CR.10601.33, etc.	20	

SUMMARY OF QUANTITIES

PROJECT NO	COUNTY	MAP NO	ROUTE	DESCRIPTION	TYP	FINAL SURFACE TESTING REQUIRED	LENGTH MI	WIDTH FT	BORROW CY	INCIDENTAL STONE BASE TONS	SHOULDER RECONSTRUCTION SMI	1 1/2" MILLING SY	0" TO 1.5" MILLING SY	INCIDENTAL MILLING SY	INTER-MEDIATE COURSE, I19.0C TONS	SURFACE COURSE, S9.5C TONS	LEVELING COURSE, S9.5C TONS	PG 64-22 PLANT MIX TONS	PG 70-22 PLANT MIX TONS	PATCHING EXISTING PAVEMENT TONS	WHEEL-CHAIR RAMPS EA	RETROFIT EXISTING WHEELCHAIR RAMPS EA	ADJ. OF MANHOLES EA	ADJ. OF METER OR VALVE BOX EA	PORTABLE LIGHTING LS	TEMP. SILT FENCE LF	MATTING (EROSION CONTROL) SY	WATTLE LF				
10CR.10601.33	Mecklenburg	1	UNIVERSITY CITY BLVD (NC 49)	FROM W.T. HARRIS BLVD (NC 24) TO JOHN KIRK DR	1,2,3	NO	0.92	88	125		3.00		3,000	1,718		4,395	200		277	360	2	4	2		0.125	350	360	880				
TOTAL FOR MAP NO. 1							0.92		125		3.00		3,000	1,718		4,395	200		277	360	2	4	2		0.125	350	360	880				
TOTAL FOR PROJ NO. 10CR.10601.33							0.92		125		3.00		3,000	1,718		4,395	200		277	360	2	4	2		0.125	350	360	880				
10CR.10601.34	Mecklenburg	2	N TRYON ST (US 29)	FROM W.T. HARRIS BLVD (NC 24) TO MCCULLOUGH DR	4,5	NO	0.4	92			0.90	21,589				1,907			114	150					0.125	100	60					
TOTAL FOR MAP NO. 2							0.4				0.90	21,589				1,907			114	150						0.125	100	60				
TOTAL FOR PROJ NO. 10CR.10601.34							0.4				0.90	21,589				1,907			114	150						0.125	100	60				
10CR.10601.35	Mecklenburg	3	OLD STATESVILLE RD (NC 115)	FROM DAVID COX RD (SR 2485) TO PVT JT AT I-485	6	NO	1.56	25	550	250	3.00			500	3,452	2,125			162	127	200					1	250	260	630			
TOTAL FOR MAP NO. 3							1.56		550	250	3.00			500	3,452	2,125			162	127	200						1	250	260	630		
TOTAL FOR PROJ NO. 10CR.10601.35							1.56		550	250	3.00			500	3,452	2,125			162	127	200						1	250	260	630		
10CR.10601.36	Mecklenburg	4	STATESVILLE RD (US 21)	FROM OLD STATESVILLE RD (NC 115) TO LAKEVIEW RD (SR 2112)	1,7	NO	1.67	38	175	50	3.70			700		3,451	334			229	650					0.125	300	300	750			
TOTAL FOR MAP NO. 4							1.67		175	50	3.70			700		3,451	334			229	650						0.125	300	300	750		
TOTAL FOR PROJ NO. 10CR.10601.36							1.67		175	50	3.70			700		3,451	334			229	650						0.125	300	300	750		
10CR.10601.37	Mecklenburg	5	W.T. HARRIS BLVD (NC 24)	FROM MALLARD CREEK RD TO I-77	1,8	NO	4.8	76	800		17.50			3,358		19,808	750			1,237	1,920	2	4	2		0.125	2,000	2,000	5,000			
TOTAL FOR MAP NO. 5							4.8		800		17.50			3,358		19,808	750			1,237	1,920	2	4	2			0.125	2,000	2,000	5,000		
TOTAL FOR PROJ NO. 10CR.10601.37							4.8		800		17.50			3,358		19,808	750			1,237	1,920	2	4	2			0.125	2,000	2,000	5,000		
10CR.10601.38	Mecklenburg	6	FREEDOM DR (NC 27)	LITTLE ROCK RD (SR 1641) TO MT HOLLY RD (SR 1666)	6	NO	2.3	26	450	200	4.50			1,800	5,291	3,109			249	187	650					2	100	100	230			
TOTAL FOR MAP NO. 6							2.3		450	200	4.50			1,800	5,291	3,109			249	187	650						2	100	100	230		
TOTAL FOR PROJ NO. 10CR.10601.38							2.3		450	200	4.50			1,800	5,291	3,109			249	187	650						2	100	100	230		
10CR.10601.39	Mecklenburg	7	ALBEMARLE RD (NC 24/27)	FROM CABARRUS COUNTY LINE TO PVT JT EAST OF BLAIR RD (NC 51)	15	NO	1.39	54	120		2.75	44,035		1,146		4,078	278			263	525						300	300	750			
TOTAL FOR MAP NO. 7							1.39		120		2.75	44,035		1,146		4,078	278			263	525			2					300	300	750	
TOTAL FOR PROJ NO. 10CR.10601.39							1.39		120		2.75	44,035		1,146		4,078	278			263	525			2					300	300	750	
10CR.10601.40	Mecklenburg	8	ALBEMARLE RD WEST BOUND (NC 24/27)	FROM WILGROVE-MINT HILL RD (SR 5223) TO PVT JT W. OF INTERSECTION	9	NO	0.35	31	5		0.20	6,375				591				35	115					1	50	50	50			
TOTAL FOR MAP NO. 8							0.35		5		0.20	6,375				591				35	115						1	50	50	50		
TOTAL FOR PROJ NO. 10CR.10601.40							0.35		5		0.20	6,375				591				35	115						1	50	50	50		
10CR.10601.41	Mecklenburg	9	INDEPENDENCE BLVD (US 74) EAST BOUND	FROM THE BRIDGE EAST OF VILLAGE LAKE TO PVT JT WEST OF SAM NEWELL RD (SR 3474)	10,11	NO	1.59	50	80		1.75		1,000	825		4,320	318			280	650					5	210	220	530			
TOTAL FOR MAP NO. 9							1.59		80		1.75		1,000	825		4,320	318		4,320	318			280	650				5	210	220	530	
TOTAL FOR PROJ NO. 10CR.10601.41							1.59		80		1.75		1,000	825		4,320	318		4,320	318			280	650				5	210	220	530	
10CR.10601.42	Mecklenburg	10	INDEPENDENCE BLVD (US 74) EAST BOUND	FROM PVT JT EAST OF SAM NEWELL (SR 3474) TO OLD NC 51	10	NO	1.1	43	95		2.00			406		2,571	250			171	440					0.125	240	240	600			
TOTAL FOR MAP NO. 10							1.1		95		2.00			406		2,571	250		2,571	250			171	440				0.125	240	240	600	
TOTAL FOR PROJ NO. 10CR.10601.42							1.1		95		2.00			406		2,571	250		2,571	250			171	440				0.125	240	240	600	
10CR.10601.43	Mecklenburg	11	INDEPENDENCE BLVD (US 74) WEST BOUND	FROM OLD NC 51 TO HARRIS BLVD	12,13,14	NO	4.14	38	275		6.00		9,750	2,750		8,556	1,035			581	1,400	1	9	3	3	0.125	500	500	750			
TOTAL FOR MAP NO. 11							4.14		275		6.00		9,750	2,750		8,556	1,035		8,556	1,035			581	1,400	1	9	3	3	0.125	500	500	750
TOTAL FOR PROJ NO. 10CR.10601.43							4.14		275		6.00		9,750	2,750		8,556	1,035		8,556	1,035			581	1,400	1	9	3	3	0.125	500	500	750
GRAND TOTAL							20.22		2,675	500	45.30		71,999	13,750	13,203	8,743	54,911	3,165	411	3,501	7,060	5	22	15	4	1.00	4,400	4,390	10,170			

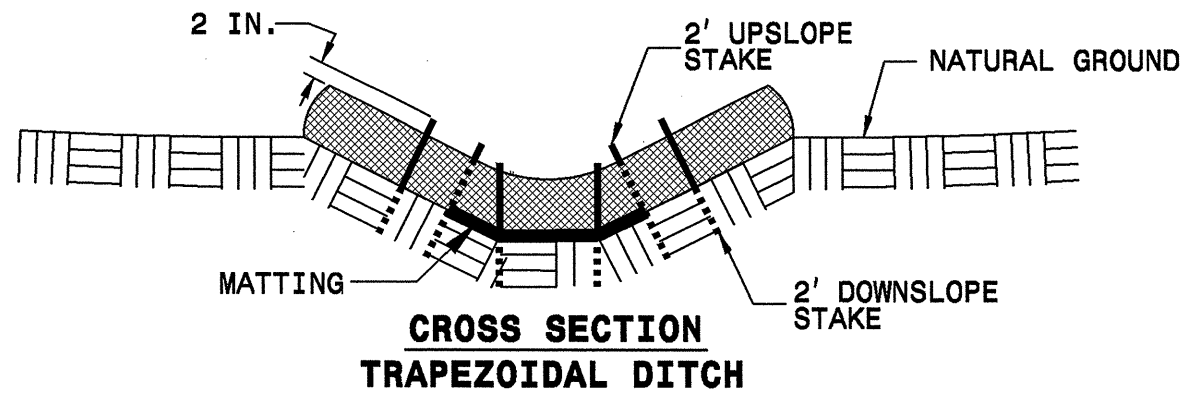
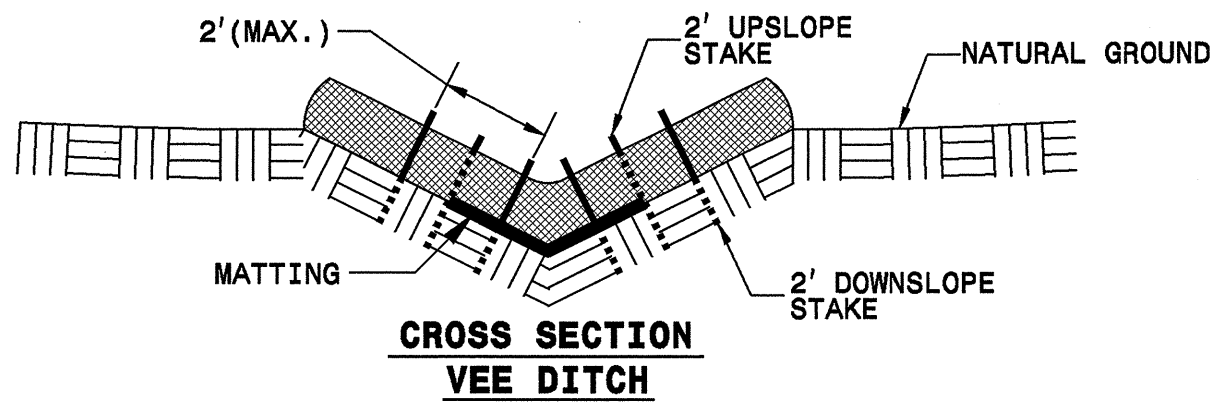
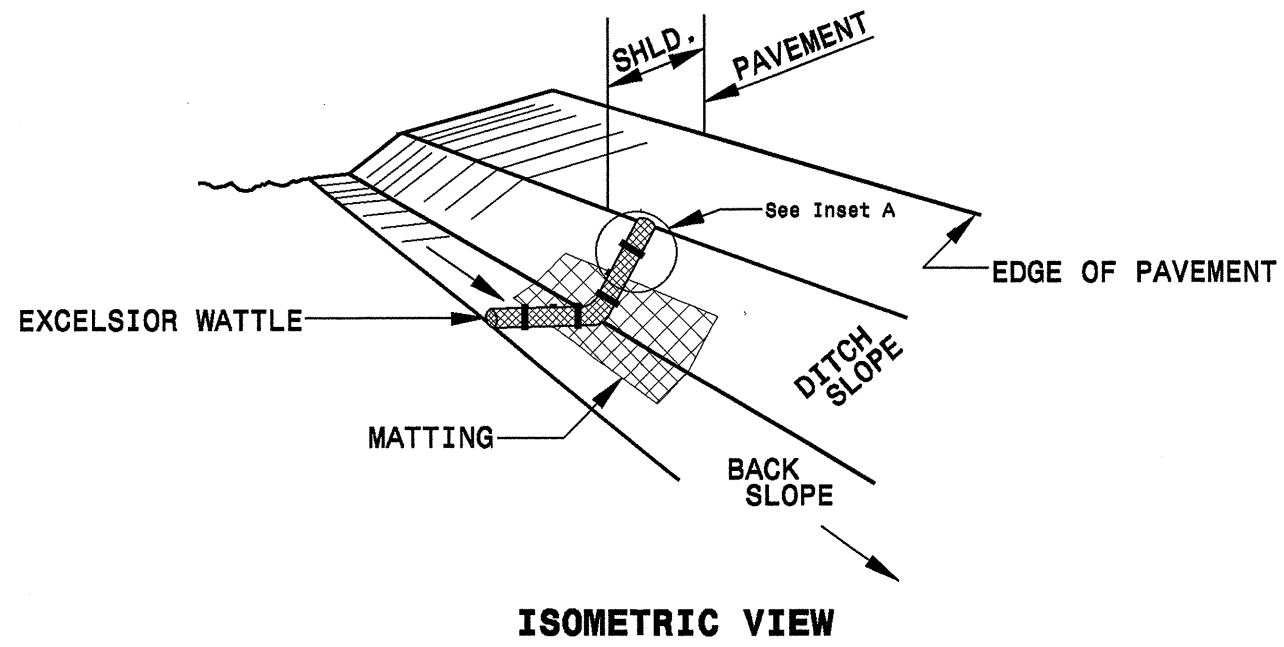
PROJECT NO.	SHEET NO.	TOTAL NO.
10CR.10601.33, etc.	21	

THERMOPLASTIC AND PAINT QUANTITIES

PROJECT NO	COUNTY	MAP NO	ROUTE	DESCRIPTION	LENGTH	WIDTH	4589000000-N	4695000000-E		4705000000-E	4710000000-E	4721000000-E				4725000000-E		4847000000-E		4900000000-N			
							TRAFFIC CONTROL	8" X 90 M WHITE THERMO	8" X 90 M YELLOW THERMO	16" X 120 M WHITE THERMO	24" X 120 M WHITE THERMO	THERMO MSG ONLY 120 M	THERMO RXR 120 M	THERMO LT ARROW 90 M	THERMO RT ARROW 90 M	THERMO STR ARROW 90 M	THERMO STR & RT ARROW 90 M	MERGE ARROW	4" WHITE POLYUREA (Highly Reflective Elements)	4" YELLOW POLYUREA (Highly Reflective Elements)	CRYSTAL & RED MARKERS	CYAN & RED MARKERS	YELLOW & YELLOW MARKERS
NO		NO					LS	LF	LF	LF	LF	EA	EA	EA	EA	EA	EA	EA	EA	EA	EA	EA	
10CR.10601.33	Mecklenburg	1	UNIVERSITY CITY BLVD (NC 49)	FROM W.T. HARRIS BLVD (NC 24) TO JOHN KIRK DR	0.92	88	0.091	250			100			12	16				12,159		50		
TOTAL FOR MAP NO. 1					0.92		0.091	250			100			12	16				12,159		50		
TOTAL FOR PROJ NO. 10CR.10601.33					0.92		0.091	250			100			12	16				12,159		50		
								250										28			12,159	50	
10CR.10601.34	Mecklenburg	2	N TRYON ST (US 29)	FROM W.T. HARRIS BLVD (NC 24) TO MCCULLOUGH DR	0.4	92	0.091	250			215	12		19	11	4			3,874		50		
TOTAL FOR MAP NO. 2					0.4		0.091	250			215	12		19	11	4			3,874		50		
TOTAL FOR PROJ NO. 10CR.10601.34					0.4		0.091	250			215	12		19	11	4			3,874		50		
								250			12			19	11	4			3,874		50		
10CR.10601.35	Mecklenburg	3	OLD STATESVILLE RD (NC 115)	FROM DAVID COX RD (SR 2485) TO PVT JT AT I-485	1.56	25	0.091		150	100	125		4	2	2				16,914	8,691	5		
TOTAL FOR MAP NO. 3					1.56		0.091		150	100	125		4	2	2				16,914	8,691	5		
TOTAL FOR PROJ NO. 10CR.10601.35					1.56		0.091		150	100	125		4	2	2				16,914	8,691	5		
								150				4		2	2			4		25,605		5	
10CR.10601.36	Mecklenburg	4	STATESVILLE RD (US 21)	FROM OLD STATESVILLE RD (NC 115) TO LAKEVIEW RD (SR 2112)	1.67	38	0.091							44	7				18,243	15,793		8	400
TOTAL FOR MAP NO. 4					1.67		0.091							44	7				18,243	15,793		8	400
TOTAL FOR PROJ NO. 10CR.10601.36					1.67		0.091							44	7				18,243	15,793		8	400
																		51		34,036		408	
10CR.10601.37	Mecklenburg	5	W.T. HARRIS BLVD (NC 24)	FROM MALLARD CREEK RD TO I-77	4.8	76	0.091				582			55	69	15	11		75,000	50,000		300	
TOTAL FOR MAP NO. 5					4.8		0.091				582			55	69	15	11		75,000	50,000		300	
TOTAL FOR PROJ NO. 10CR.10601.37					4.8		0.091				582			55	69	15	11		75,000	50,000		300	
																		150		125,000		300	
10CR.10601.38	Mecklenburg	6	FREEDOM DR (NC 27)	LITTLE ROCK RD (SR 1641) TO MT HOLLY RD (SR 1666)	2.3	26	0.091			100	200		4	4	3				23,317	23,306		8	150
TOTAL FOR MAP NO. 6					2.3		0.091			100	200		4	4	3				23,317	23,306		8	150
TOTAL FOR PROJ NO. 10CR.10601.38					2.3		0.091			100	200		4	4	3				23,317	23,306		8	150
																		4		7		46,623	158
10CR.10601.39	Mecklenburg	7	ALBEMARLE RD (NC 24/27)	FROM CABARRUS COUNTY LINE TO PVT JT EAST OF BLAIR RD (NC 51)	1.39	54	0.091			100	100		4	21	8				5,631	13,954		25	
TOTAL FOR MAP NO. 7					1.39		0.091			100	100		4	21	8				5,631	13,954		25	
TOTAL FOR PROJ NO. 10CR.10601.39					1.39		0.091			100	100		4	21	8				5,631	13,954		25	
																		4		29		19,585	25
10CR.10601.40	Mecklenburg	8	ALBEMARLE RD WEST BOUND (NC 24/27)	FROM WILGROVE-MINT HILL RD (SR 5223) TO PVT JT W. OF INTERSECTION	0.35	31	0.091				40			3					400	1,149		6	
TOTAL FOR MAP NO. 8					0.35		0.091				40			3					400	1,149		6	
TOTAL FOR PROJ NO. 10CR.10601.40					0.35		0.091				40			3					400	1,149		6	
																		3		1,549		6	
10CR.10601.41	Mecklenburg	9	INDEPENDENCE BLVD (US 74) EAST BOUND	FROM THE BRIDGE EAST OF VILLAGE LAKE TO PVT JT WEST OF SAM NEWELL RD (SR 3474)	1.59	50	0.091				115	60		6	22				12,284	8,300		45	
TOTAL FOR MAP NO. 9					1.59		0.091				115	60		6	22				12,284	8,300		45	
TOTAL FOR PROJ NO. 10CR.10601.41					1.59		0.091				115	60		6	22				12,284	8,300		45	
																		60		28		20,584	45
10CR.10601.42	Mecklenburg	10	INDEPENDENCE BLVD (US 74) EAST BOUND	FROM PVT JT EAST OF SAM NEWELL (SR 3474) TO OLD NC 51	1.1	43	0.091				60			3	9	6	5		8,634	5,800		40	
TOTAL FOR MAP NO. 10					1.1		0.091				60			3	9	6	5		8,634	5,800		40	
TOTAL FOR PROJ NO. 10CR.10601.42					1.1		0.091				60			3	9	6	5		8,634	5,800		40	
																		23		14,434		40	
10CR.10601.43	Mecklenburg	11	INDEPENDENCE BLVD (US 74) WEST BOUND	FROM OLD NC 51 TO HARRIS BLVD	4.14	38	0.091				300			23	13	10	7	6	30,551	21,246		110	
TOTAL FOR MAP NO. 11					4.14		0.091				300			23	13	10	7	6	30,551	21,246		110	
TOTAL FOR PROJ NO. 10CR.10601.43					4.14		0.091				300			23	13	10	7	6	30,551	21,246		110	
																		59		51,797		110	
GRAND TOTAL					20.22		1	500	150	300	1,837	72	12	192	160	35	23	6	207,007	148,239	105	542	550
								650				84			416				355,246		1,197		

PROJECT REFERENCE NO. 10CR.10601 33 etc	SHEET NO. EC-1
ROADWAY DESIGN ENGINEER	HYDRAULICS ENGINEER

WATTLE DETAIL



NOTES:

USE MINIMUM 12 IN. DIAMETER EXCELSIOR WATTLE.

USE 2 FT. WOODEN STAKES WITH A 2 IN. BY 2 IN. NOMINAL CROSS SECTION.

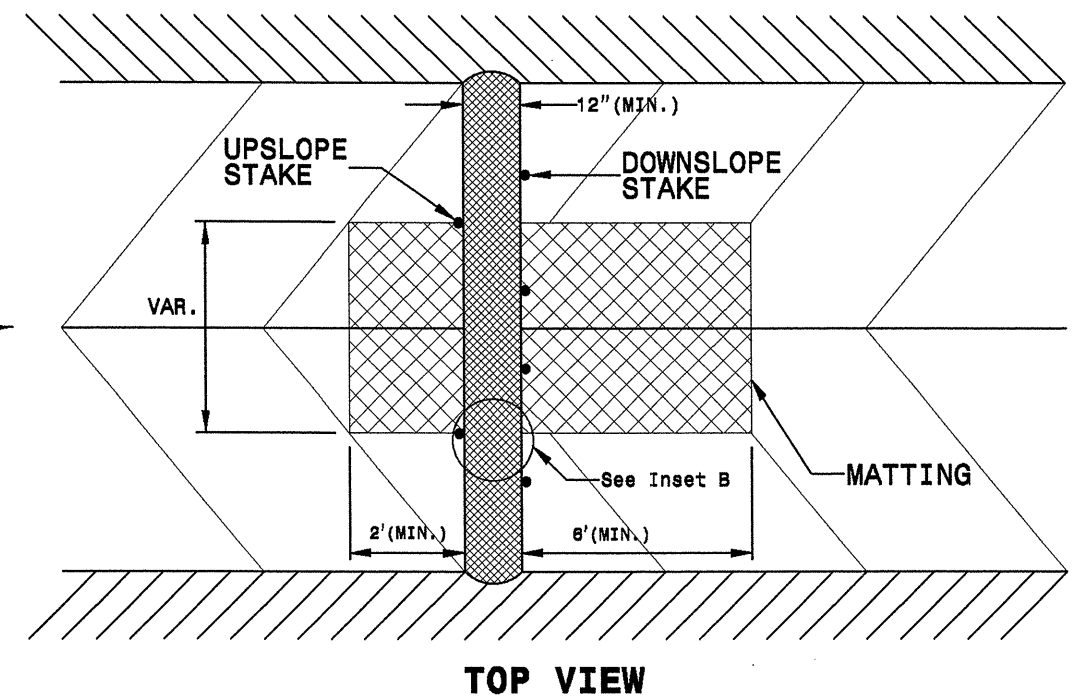
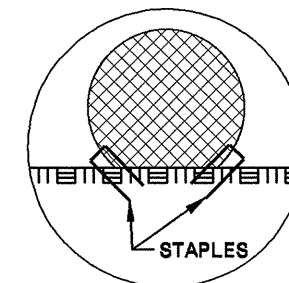
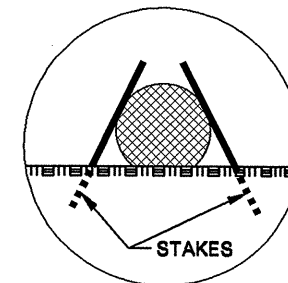
ONLY INSTALL WATTLE(S) TO A HEIGHT IN DITCH SO FLOW WILL NOT WASH AROUND WATTLE AND SCOUR DITCH SLOPES AND AS DIRECTED.

INSTALL A MINIMUM OF 2 UPSLOPE STAKES AND 4 DOWNSLOPE STAKES AT AN ANGLE TO WEDGE WATTLE TO BOTTOM OF DITCH.

PROVIDE STAPLES MADE OF 0.125 IN. DIAMETER STEEL WIRE FORMED INTO A U SHAPE NOT LESS THAN 12" IN LENGTH.

INSTALL STAPLES APPROXIMATELY EVERY 1 LINEAR FOOT ON BOTH SIDES OF WATTLE AND AT EACH END TO SECURE IT TO THE SOIL.

INSTALL MATTING IN ACCORDANCE WITH SECTION 1631 OF THE STANDARD SPECIFICATIONS.

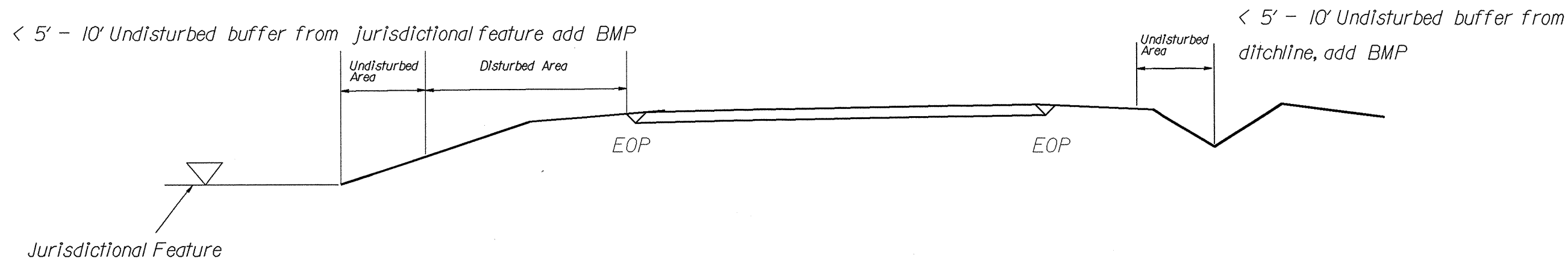
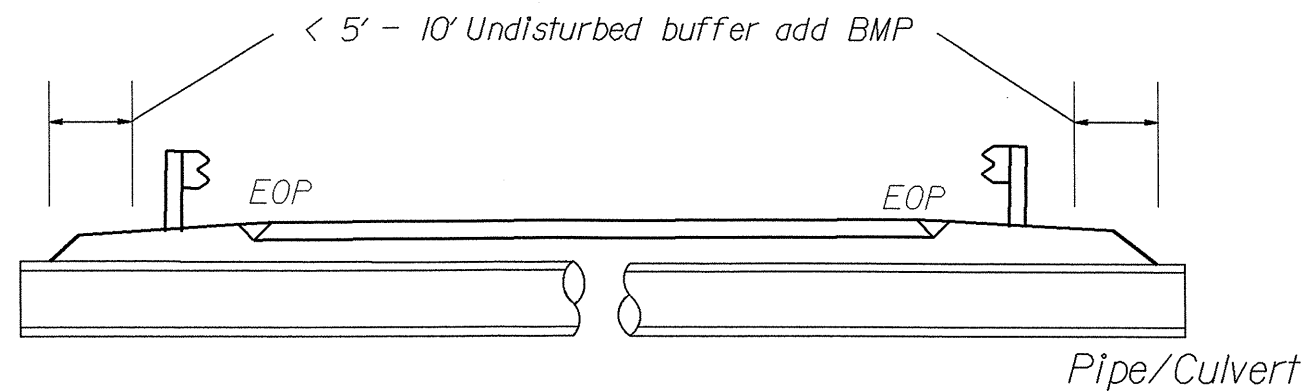


NOTES: Less than 5' - 10' undisturbed buffer from ROW, ditchline, water feature, or drainage inlet, add BMP.

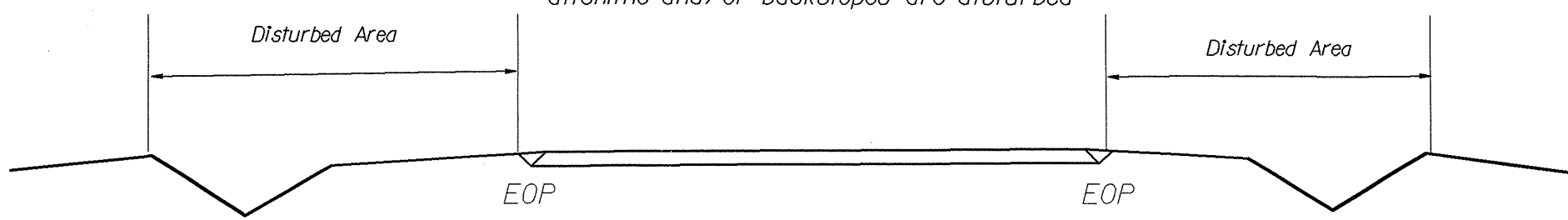
BMP Options: Wattle or Silt Fence

EROSION CONTROL DETAIL

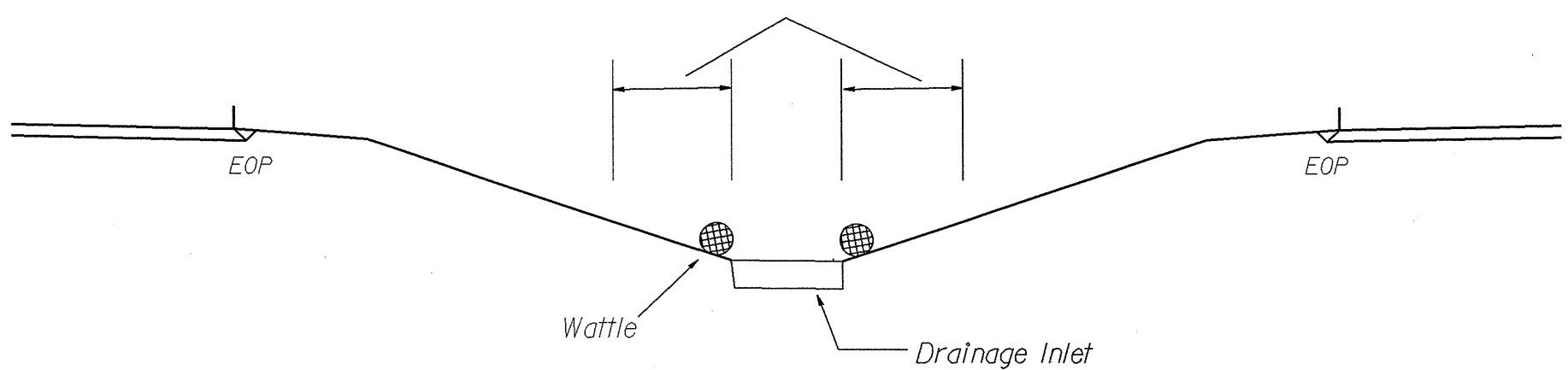
PROJECT REFERENCE NO. 10CR, 106001, 33, etc	SHEET NO. EC-2
ROADWAY DESIGN ENGINEER	HYDRAULICS ENGINEER



Use BMP's if shoulders and/or front slopes and/or ditchline and/or backslopes are disturbed

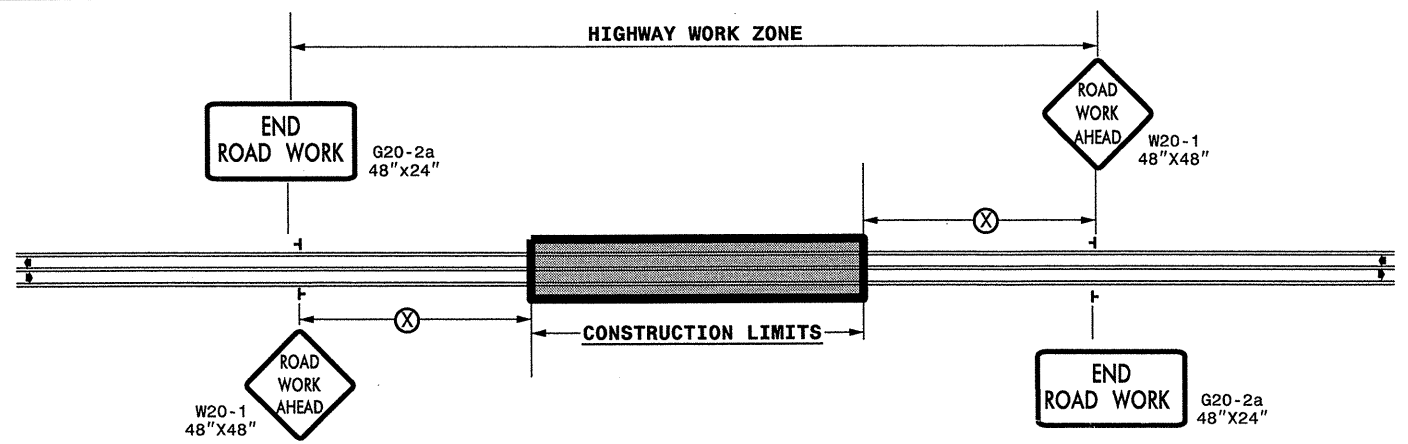


< 5' - 10' Undisturbed buffer from inlet, add wattle



NOT TO SCALE

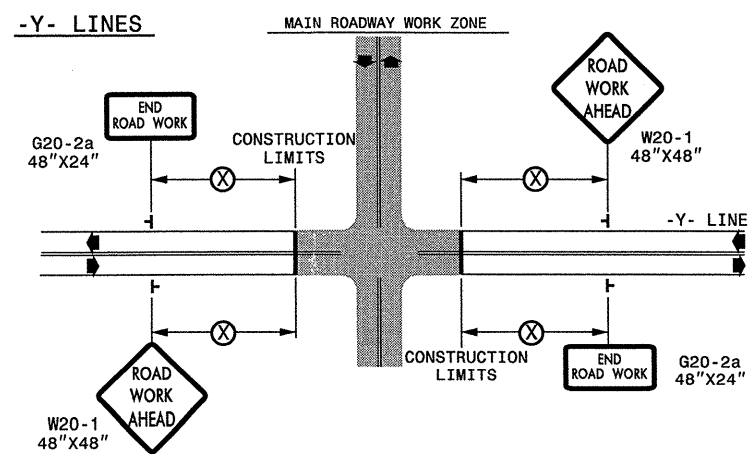
TWO-WAY UNDIVIDED ** (L-LINES)



POSTED SPEED LIMIT (M.P.H.)	RECOMMENDED MINIMUM SIGN SPACING
≤ 50	500'
≥ 55	1000'

STATE OF NORTH CAROLINA
DEPT. OF TRANSPORTATION
DIVISION OF HIGHWAYS
RALEIGH, N.C.

ROADWAYS INTERSECTING ALONG 2 WAY UNDIVIDED WORK ZONE (Y-LINES)



DETAIL DRAWING FOR
TWO-WAY UNDIVIDED
WORK ZONE WARNING SIGNS

GENERAL NOTES

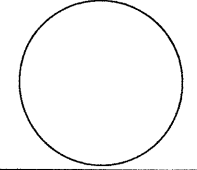
- USE FLUORESCENT ORANGE SHEETING (TYPE VII OR HIGHER) ON ALL ADVANCED WORK ZONE SIGNS.
- DO NOT INSTALL ADVANCE WARNING SIGNS MORE THAN 3 DAYS PRIOR TO BEGINNING OF WORK.
- SIGNS SHOWN ARE REQUIRED FOR WORK ZONES THAT WILL REMAIN IN EFFECT OVERNIGHT. FOR SHORT-TERM DAILY MAINTENANCE TYPE OPERATIONS, THIS SIGNING APPLICATION IS OPTIONAL; MAY USE ONLY APPLICABLE ROADWAY STANDARD DRAWINGS INSTEAD. HOWEVER, IF THIS SIGNING APPLICATION IS USED, SIGNS MAY BE PORTABLE MOUNTED.
- ALL SIGN SPACING DIMENSIONS ARE APPROXIMATE, FIELD ADJUST AS NECESSARY OR AS DIRECTED.
- USE 3LB STEEL U-CHANNEL POST OR 4" X 4" WOOD POST FOR ALL WORK ZONE SIGNS. 3LB STEEL U-CHANNEL POSTS MUST MEET THE REQUIREMENTS OF STANDARD SPECIFICATION SECTION 1094-1(B), MAY BE GALVANIZED STEEL, OR MAY BE PAINTED GREEN BY THE POST MANUFACTURER. SQUARE STEEL TUBING POSTS HAVING EQUIVALENT STRENGTH OF THE 3 LB STEEL U-CHANNEL POST ARE ALSO ACCEPTABLE FOR USE. ERECT SIGNS PER ROADWAY STANDARD DRAWING 1110.01. PAYMENT FOR WOOD POSTS, 3LB STEEL U-CHANNEL AND SQUARE STEEL TUBING POSTS WITH SIGNS WILL BE MADE ACCORDING TO STANDARD SPECIFICATION "WORK ZONE SIGNS" SECTION 1110.
- WHEN NECESSARY, USE SPLICING IN ACCORDANCE WITH ROADWAY STANDARD DRAWING NO. 1110.01. REMOVE ENTIRE POST WHEN REMOVING SIGNS WITH SPLICED POSTS.
- DO NOT BACK BRACE SIGN SUPPORTS.
- ** TWO-WAY UNDIVIDED ADVANCE WARNING SIGN CONFIGURATION MAY BE USED ON URBAN MULTI-LANE FACILITIES WHERE CONDITIONS LIMIT THE USE OF DUAL MOUNTED SIGNS AS DETERMINED BY THE ENGINEER.

LEGEND

└ STATIONARY SIGN

◀ DIRECTION OF TRAFFIC FLOW

SHEET 1 OF 1

APPROVED: _____ DATE: _____	DETAIL DRAWING FOR TWO-WAY UNDIVIDED AND URBAN FREEWAYS ADVANCED WORK ZONE WARNING SIGNS	SCALE: NONE	REVISIONS
SEAL 		DATE: 7-98 10/01	DESIGN BY: _____
	DESIGN BY: _____	01/01 11/04	CADD BY: _____
	REVIEWED BY: _____		

28-FEB-2011 12:34
 \\DOT\OF\SR007\01\GROUPS-WZ\TCC\TMU\WZTC\Resur facing\2011\Western\2011\Div\0\33\11\Mecklenburg_US21\sg\c202761A-K_10CR.10601.33\11_2way_undiv_&_Urban_Fr.wys_stationary.dgn
 sngreen AT 12:44:33

