

U-2826B

TIP PROJECT:

CONTRACT:

STATE OF NORTH CAROLINA
DIVISION OF HIGHWAYS

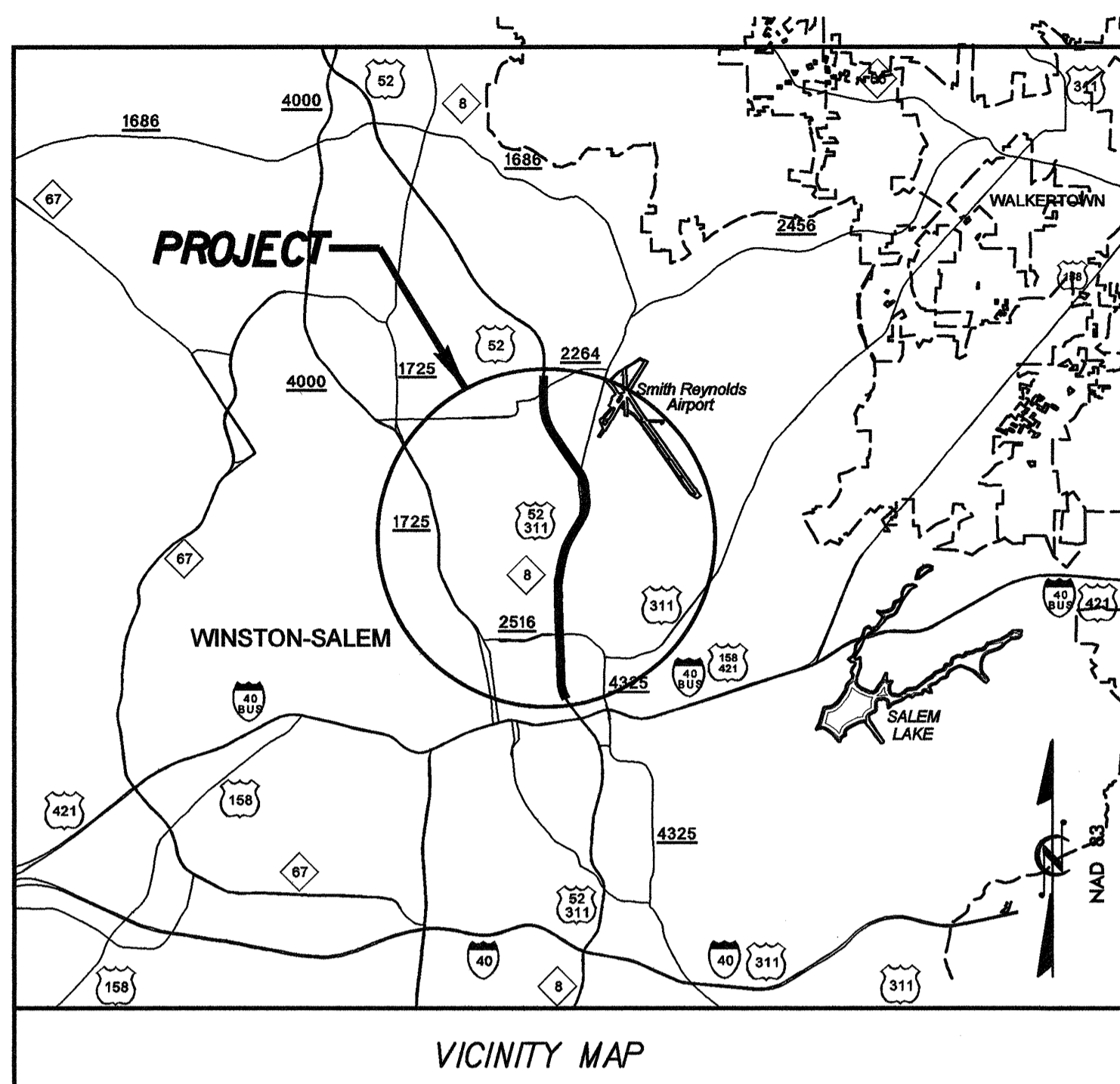
FORSYTH COUNTY

LOCATION: US 52 FROM GREYHOUND COURT
TO SR 2264 (AKRON DRIVE), INCLUDING
MARTIN LUTHER KING, JR. DRIVE

TYPE OF WORK: RELOCATION OF POWER,
TELEPHONE, CATV, GAS, WATER,
& SEWER

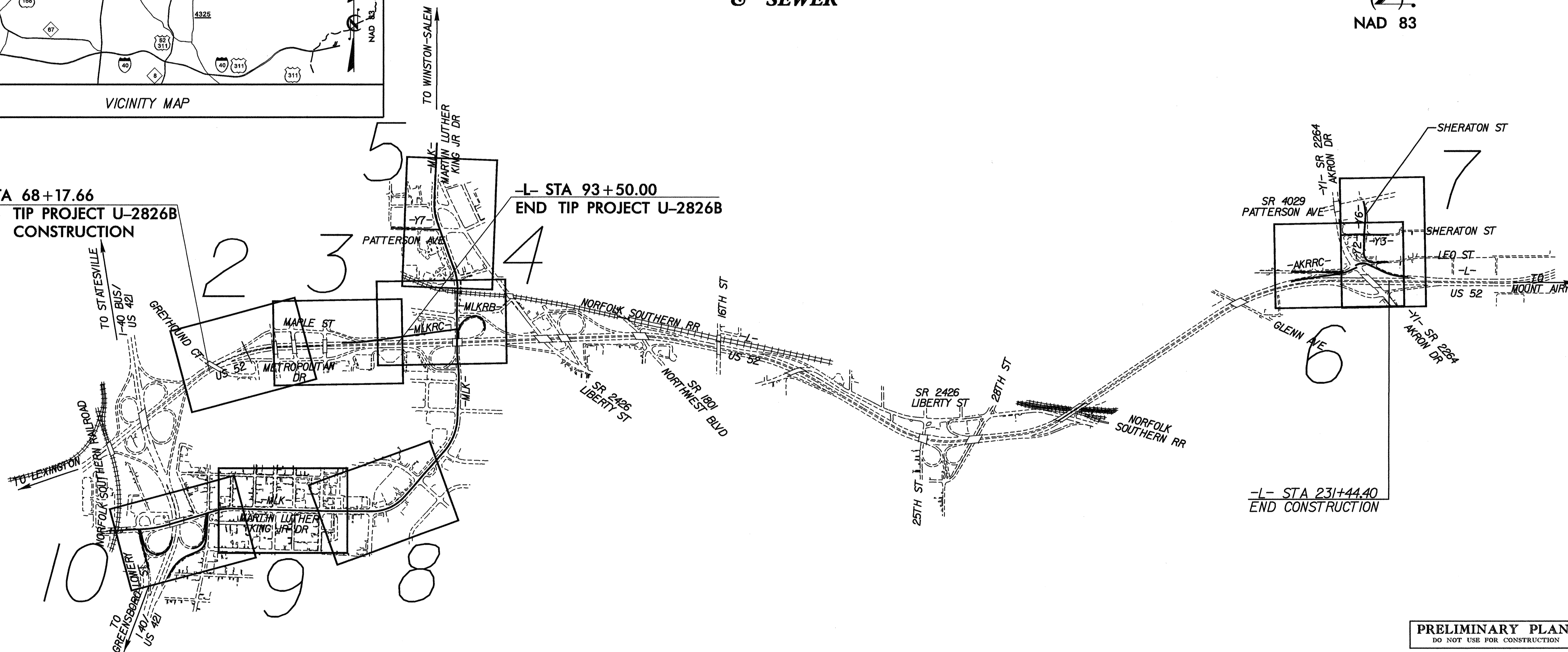
STATE	STATE PROJECT REFERENCE NO.	SHEET NO.	TOTAL SHEETS
N.C.	U-2826B	UO-1	10

UTILITIES BY OTHERS PLANS



-L- STA 68+17.66
BEGIN TIP PROJECT U-2826B
BEGIN CONSTRUCTION

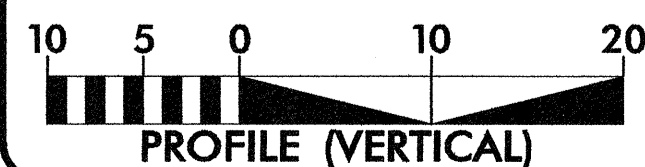
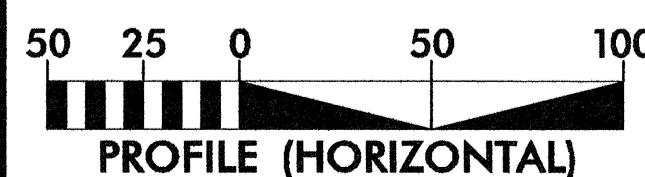
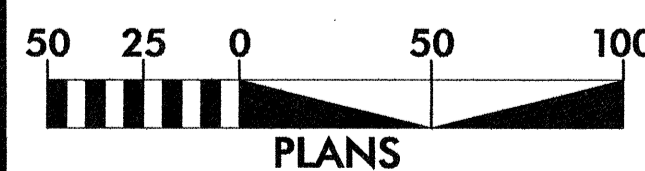
-L- STA 93+50.00
END TIP PROJECT U-2826B



-L- STA 231+44.40
END CONSTRUCTION

PRELIMINARY PLANS
DO NOT USE FOR CONSTRUCTION

GRAPHIC SCALES



INDEX OF SHEETS

SHEET NO.	DESCRIPTION
UO-1	TITLE SHEET
UO-2 TO UO-10	UO PLAN SHEETS

UTILITY OWNERS ON PROJECT

DUKE ENERGY:

LYDIA HOOTS
500 UTILITY DRIVE
CLEMMONS, NC 27012
(336) 917-2524 office

TIME WARNER CABLE:

MIKE WESTGARD
721 N. REGIONAL ROAD
GREENSBORO, NC 27409
(336) 217-3458 office

AT&T:

JIM BROOKS
117 CANTERBURY DRIVE
WINSTON SALEM, NC 27107
(336) 788-0150 office

PIEDMONT NATURAL GAS:

DAVID JACKSON
2300 LOWERY STREET
WINSTON-SALEM, NC 27101
(336) 726-7762 office

CITY OF WINSTON-SALEM:

MIKE PATTON
CITY HALL, SUITE 137
101 NORTH MAIN STREET
WINSTON-SALEM, NC 27101
(336) 771-5121 office

UTILITY DESIGN BY:

MA Engineering
CONSULTANTS, INC.
598 East Chatham Street, Suite 137 Cary, NC 27511
Phone: 919.297.0220 Fax: 919.297.0221

NCDOT PROJECT ENGINEER:
COREY BOUSQUET, P.E.
PREPARED FOR:
NORTH CAROLINA
DEPARTMENT OF TRANSPORTATION
PROJECT SERVICES UNIT
RALEIGH, NC

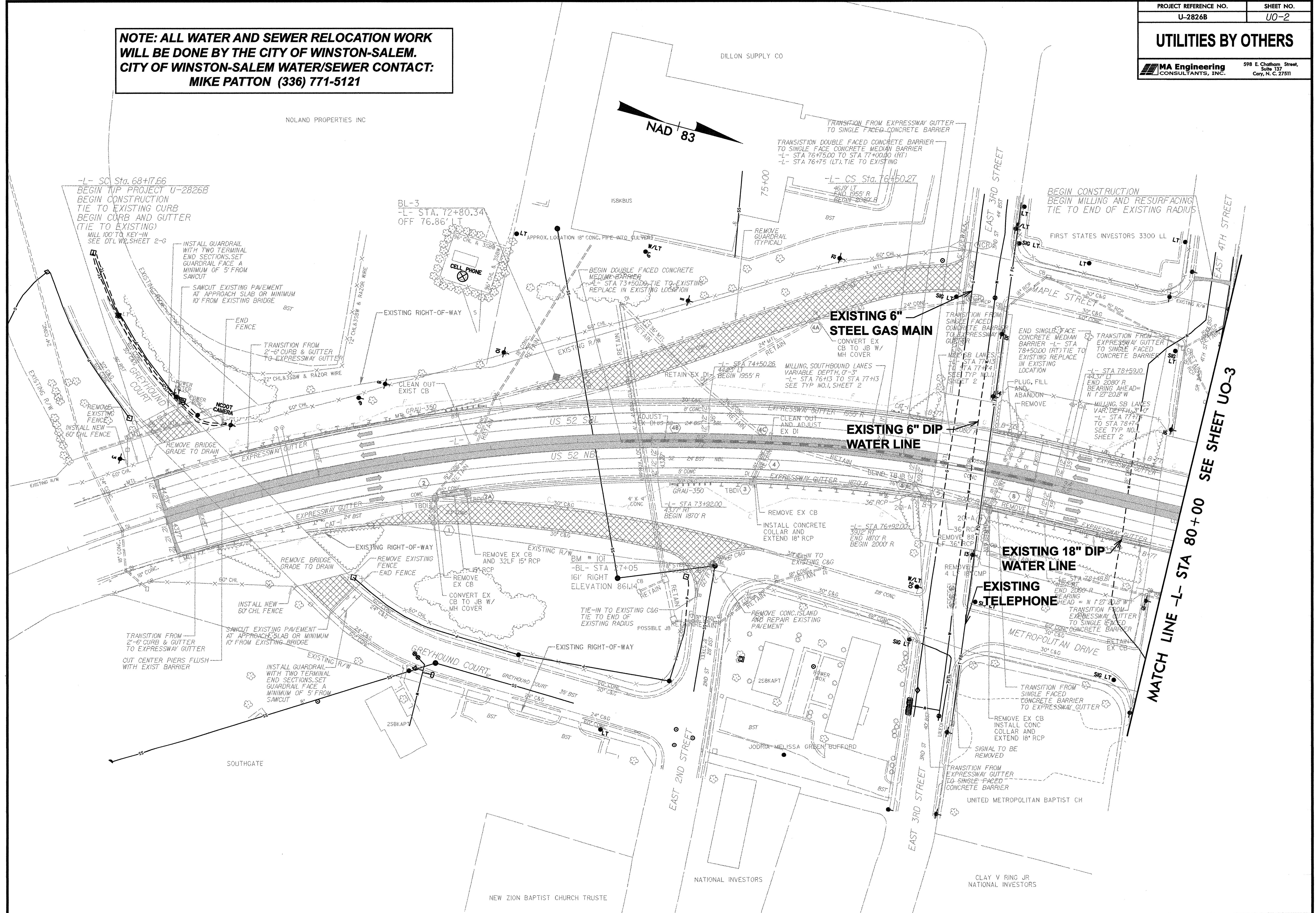
\$FILEL\$

\$DATE\$

UTILITIES BY OTHERS

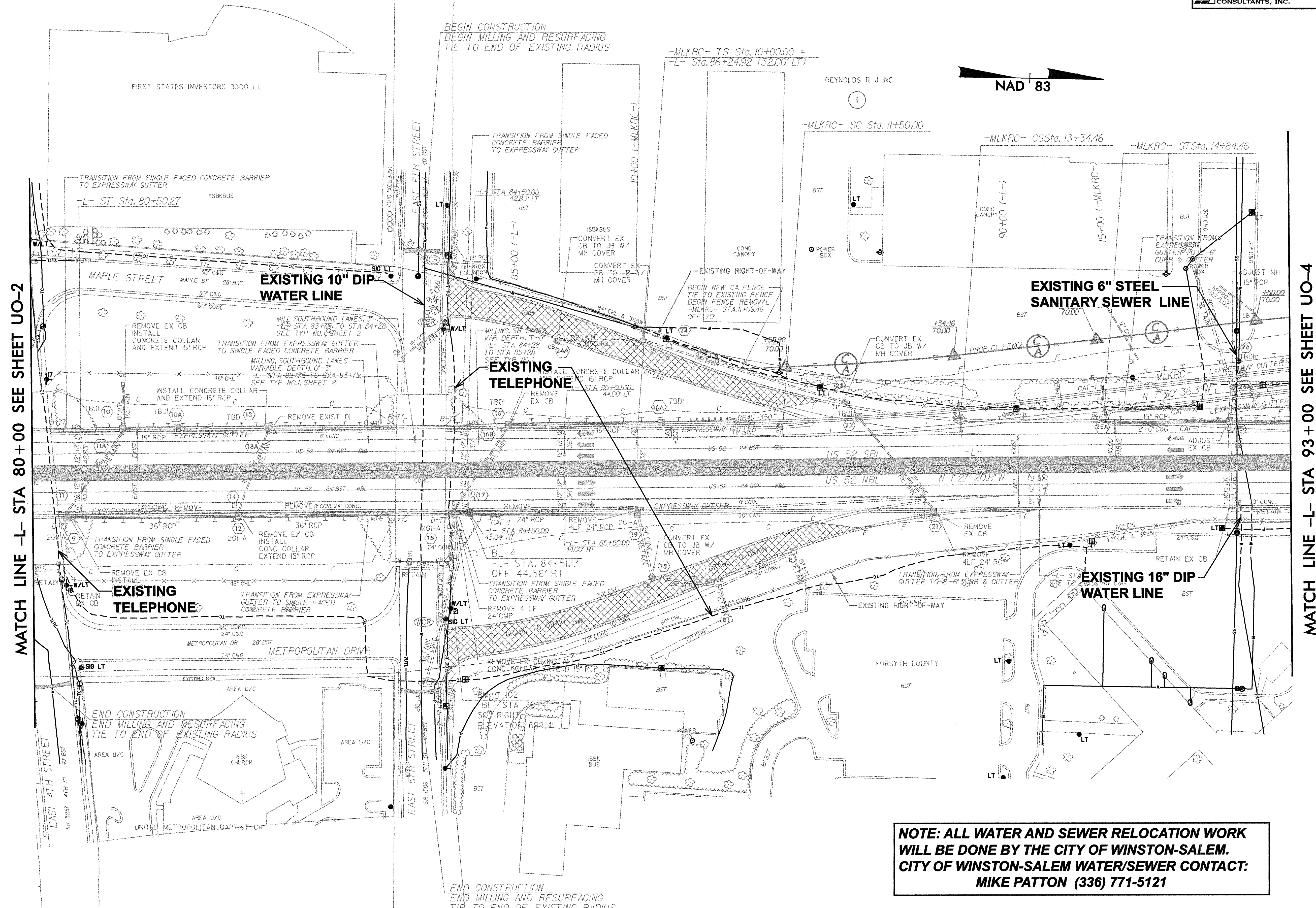
MA Engineering
CONSULTANTS, INC. 598 E. Chatham Street,
Suite 137
Cary, N.C. 27511

**NOTE: ALL WATER AND SEWER RELOCATION WORK
WILL BE DONE BY THE CITY OF WINSTON-SALEM.
CITY OF WINSTON-SALEM WATER/SEWER CONTACT:
MIKE PATTON (336) 771-5121**



UTILITIES BY OTHERS

MA Engineering CONSULTANTS, INC. 598 E. Chatham Street, Suite 137, Cary, N. C. 27511



MATCH LINE -L- STA 80+00 SEE SHEET UO-2

MATCH LINE -L- STA 93+00 SEE SHEET UO-4

NOTE: ALL WATER AND SEWER RELOCATION WORK WILL BE DONE BY THE CITY OF WINSTON-SALEM. CITY OF WINSTON-SALEM WATER/SEWER CONTACT: MIKE PATTON (336) 771-5121

\$DATE\$ \$FILEL\$

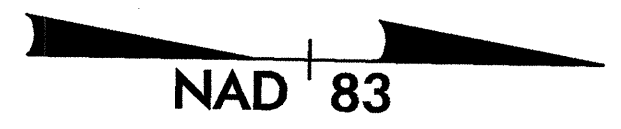
BEGIN CONSTRUCTION
BEGIN MILLING AND RESURFACING
TIE TO END OF EXISTING RADIUS

END CONSTRUCTION
END MILLING AND RESURFACING
TIE TO END OF EXISTING RADIUS

UTILITIES BY OTHERS

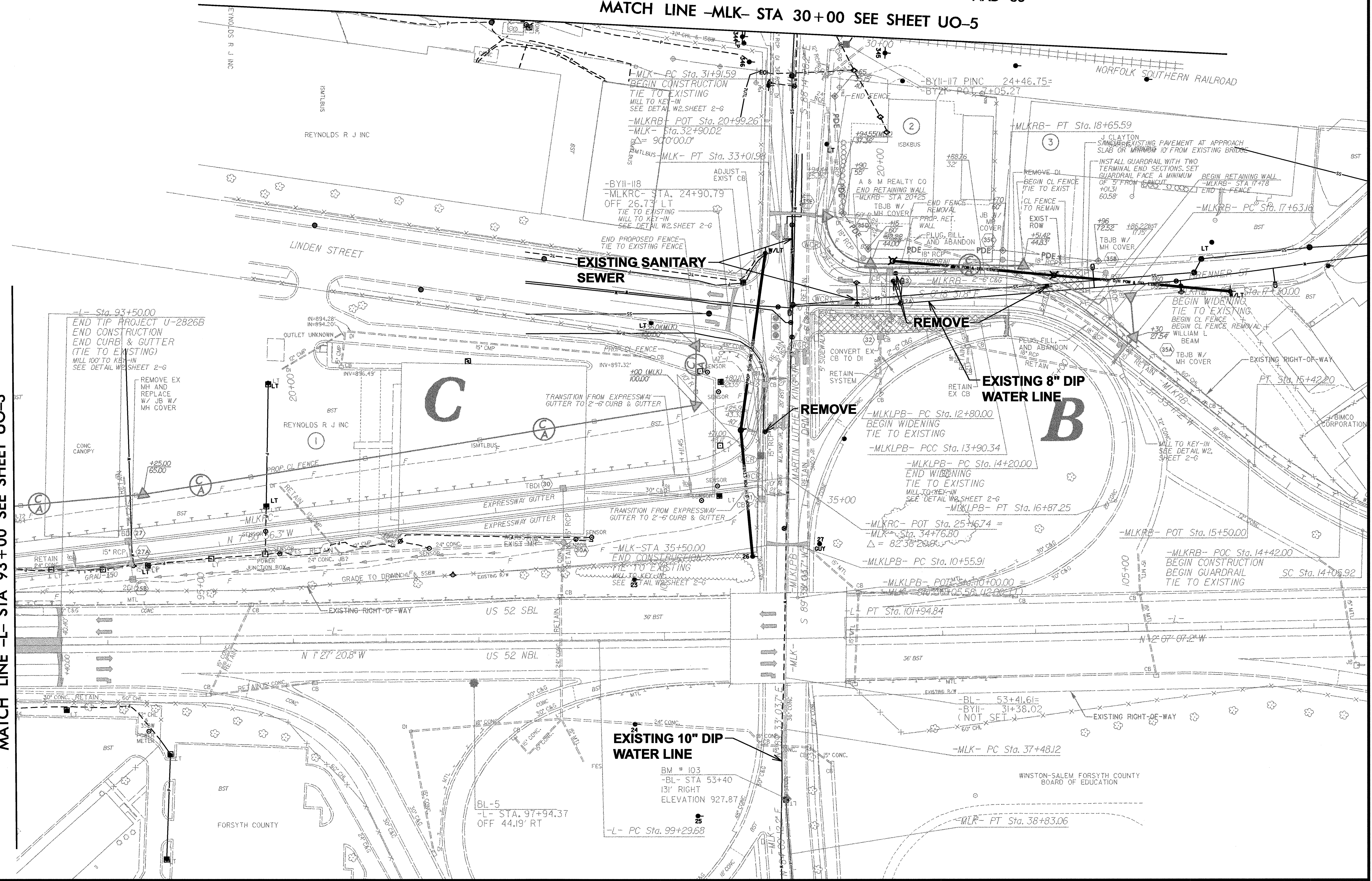
MA Engineering CONSULTANTS, INC. 598 E. Chatham Street, Suite 137, Cary, N. C. 27511

NOTE: ALL WATER AND SEWER RELOCATION WORK WILL BE DONE BY THE CITY OF WINSTON-SALEM. CITY OF WINSTON-SALEM WATER/SEWER CONTACT: MIKE PATTON (336) 771-5121



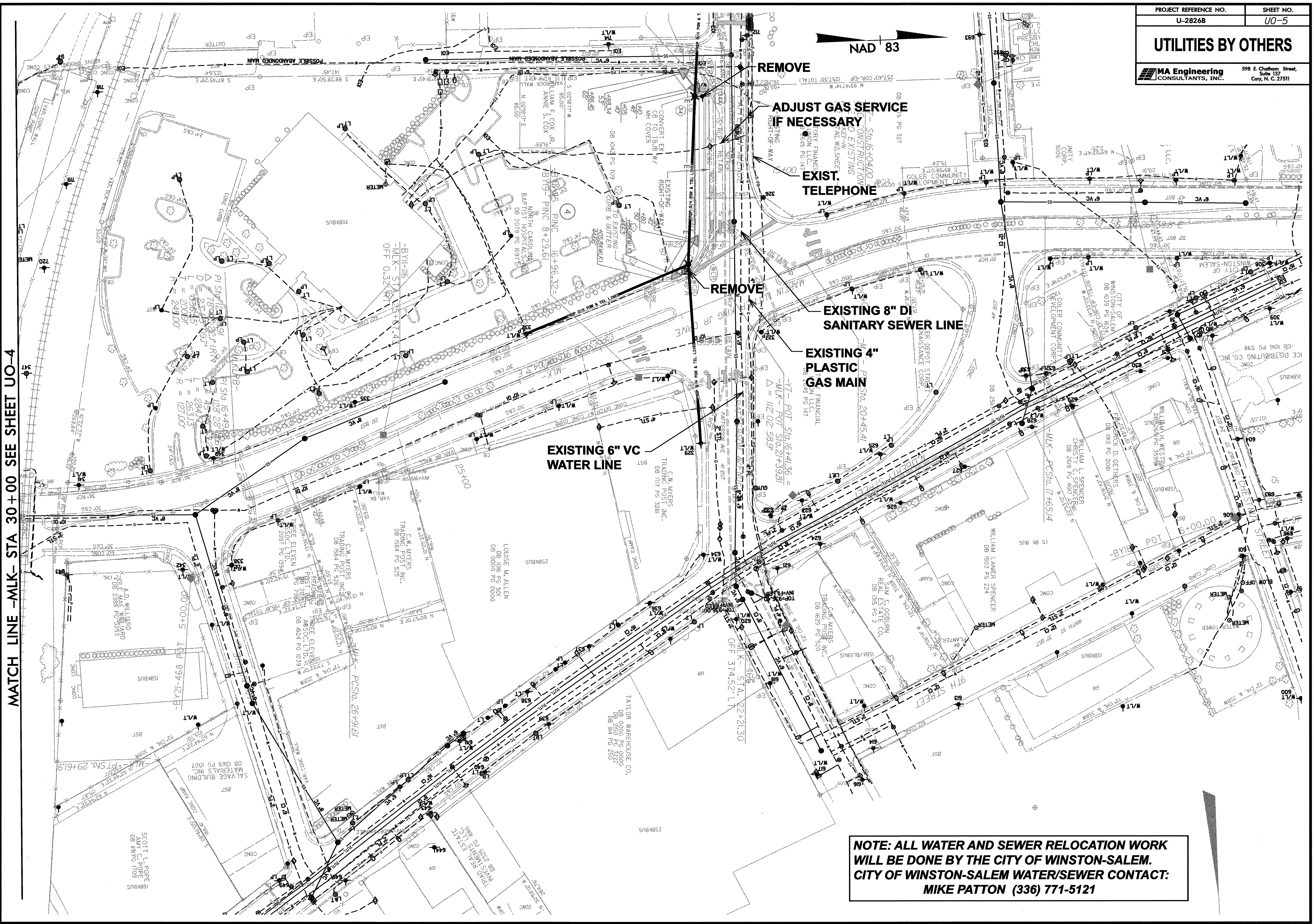
MATCH LINE -MLK- STA 30+00 SEE SHEET UO-5

MATCH LINE -L- STA 93+00 SEE SHEET UO-3



FILED \$
DATE \$

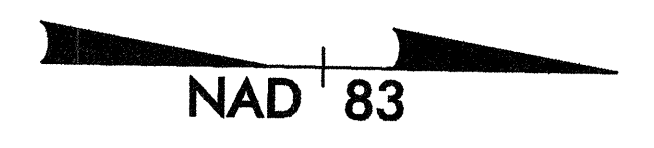
MATCH LINE - MLK- STA 30+00 SEE SHEET UO-4



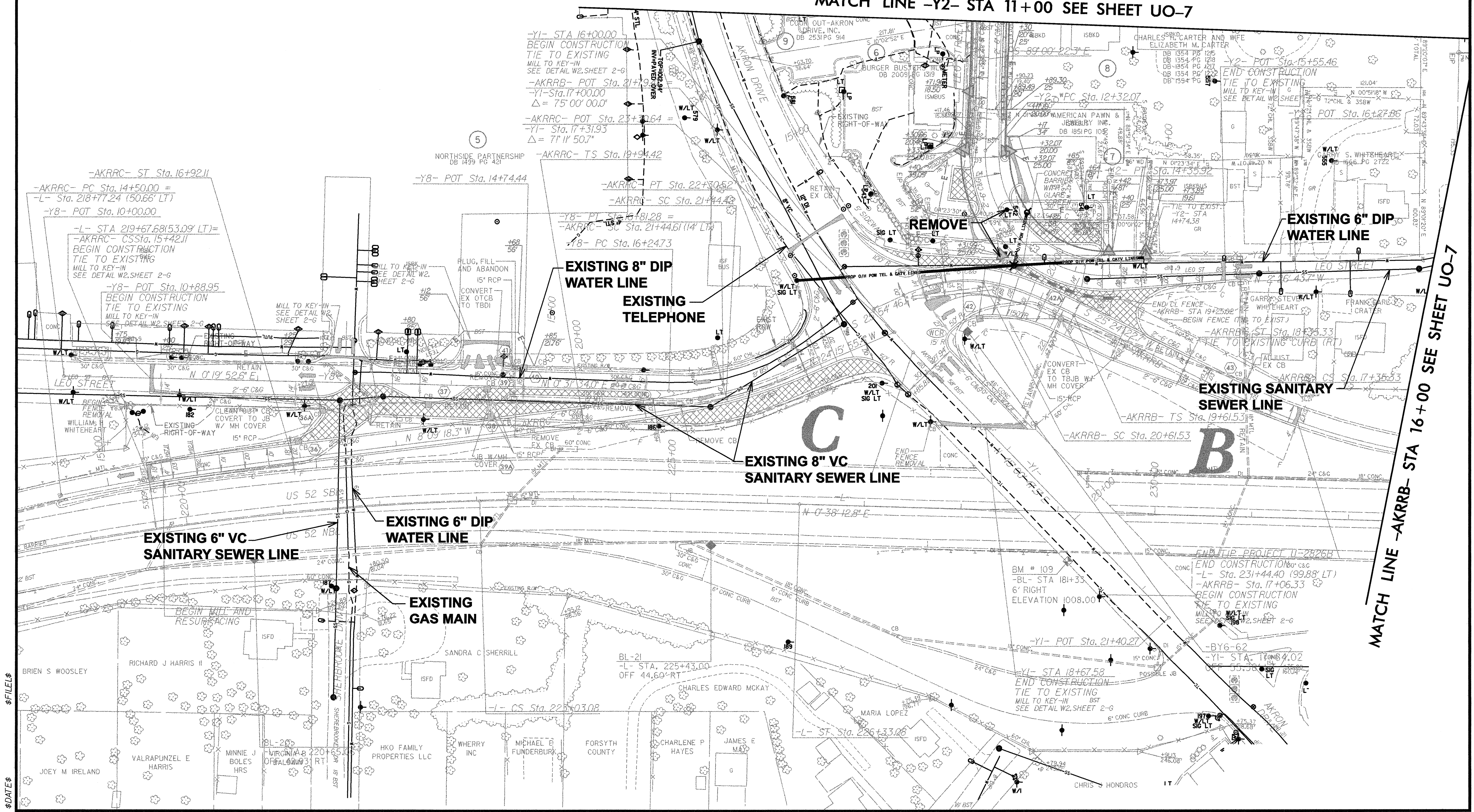
NOTE: ALL WATER AND SEWER RELOCATION WORK WILL BE DONE BY THE CITY OF WINSTON-SALEM. CITY OF WINSTON-SALEM WATER/SEWER CONTACT: MIKE PATTON (336) 771-5121

UTILITIES BY OTHERS

NOTE: ALL WATER AND SEWER RELOCATION WORK WILL BE DONE BY THE CITY OF WINSTON-SALEM. CITY OF WINSTON-SALEM WATER/SEWER CONTACT: MIKE PATTON (336) 771-5121



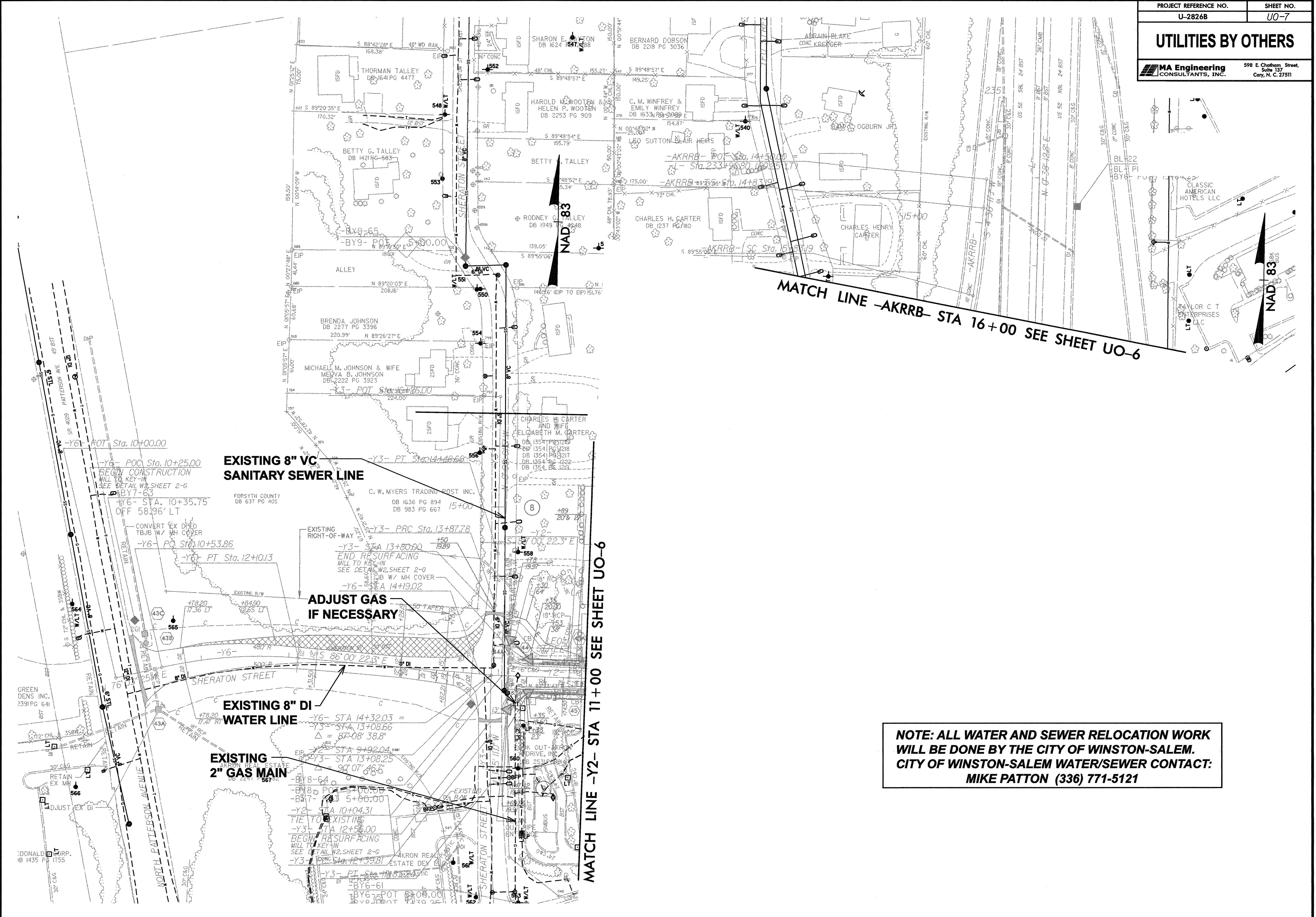
MATCH LINE -Y2- STA 11+00 SEE SHEET UO-7



\$FILES\$
 \$DATES\$

UTILITIES BY OTHERS

MA Engineering
CONSULTANTS, INC. 598 E. Chatham Street,
Suite 137
Cary, N. C. 27511

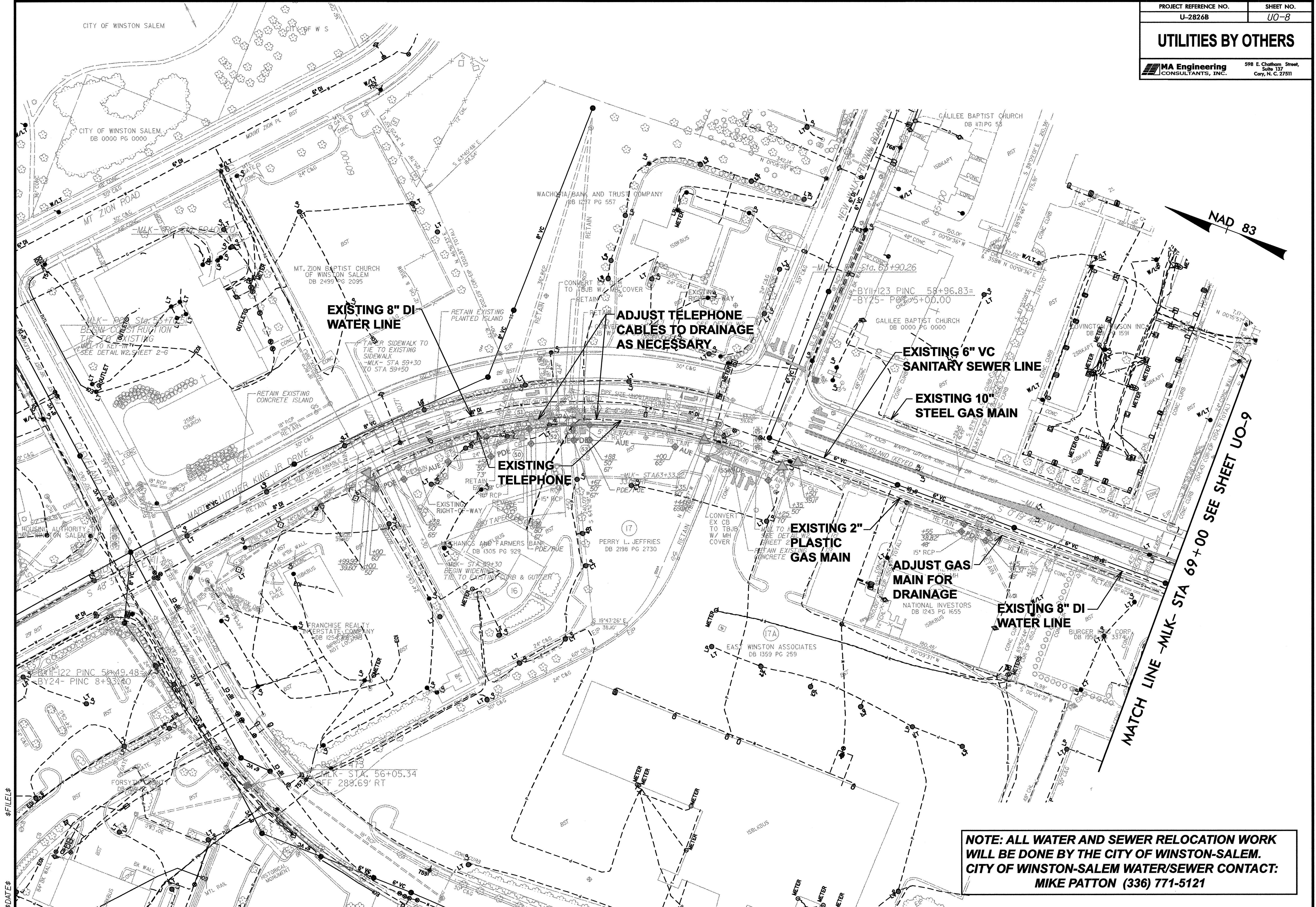


NOTE: ALL WATER AND SEWER RELOCATION WORK WILL BE DONE BY THE CITY OF WINSTON-SALEM. CITY OF WINSTON-SALEM WATER/SEWER CONTACT: MIKE PATTON (336) 771-5121

\$FILEL\$
\$DATE\$

UTILITIES BY OTHERS

MA Engineering CONSULTANTS, INC. 598 E. Chatham Street, Suite 137, Cary, N.C. 27511



EXISTING 8" DI WATER LINE

ADJUST TELEPHONE CABLES TO DRAINAGE AS NECESSARY.

EXISTING 6" VC SANITARY SEWER LINE

EXISTING 10" STEEL GAS MAIN

EXISTING TELEPHONE

EXISTING 2" PLASTIC GAS MAIN

ADJUST GAS MAIN FOR DRAINAGE

EXISTING 8" DI WATER LINE

MATCH LINE - MLK- STA 69+00 SEE SHEET UO-9

NAD 83

NOTE: ALL WATER AND SEWER RELOCATION WORK WILL BE DONE BY THE CITY OF WINSTON-SALEM. CITY OF WINSTON-SALEM WATER/SEWER CONTACT: MIKE PATTON (336) 771-5121

CITY OF WINSTON SALEM

CITY OF WINSTON SALEM DB 0000 PG 0000

MT. ZION BAPTIST CHURCH OF WINSTON SALEM DB 2499 PG 2095

WACHOVIA BANK AND TRUST COMPANY DB 1237 PG 557

GALILEE BAPTIST CHURCH DB 1711 PG 53

BY11-123 PINC 58+96.83= BY25- PINC 5+00.00

Sta. 65+90.26

MARTIN LUTHER KING JR DRIVE

PERRY L. JEFFRIES DB 2198 PG 2730

NATIONAL INVESTORS DB 1243 PG 1655

BURGER DB 1955 PG 3374

BY22- PINC 58+49.48= BY24- PINC 8+33.40

MLK- STA. 56+05.34 OFF 288.69' RT

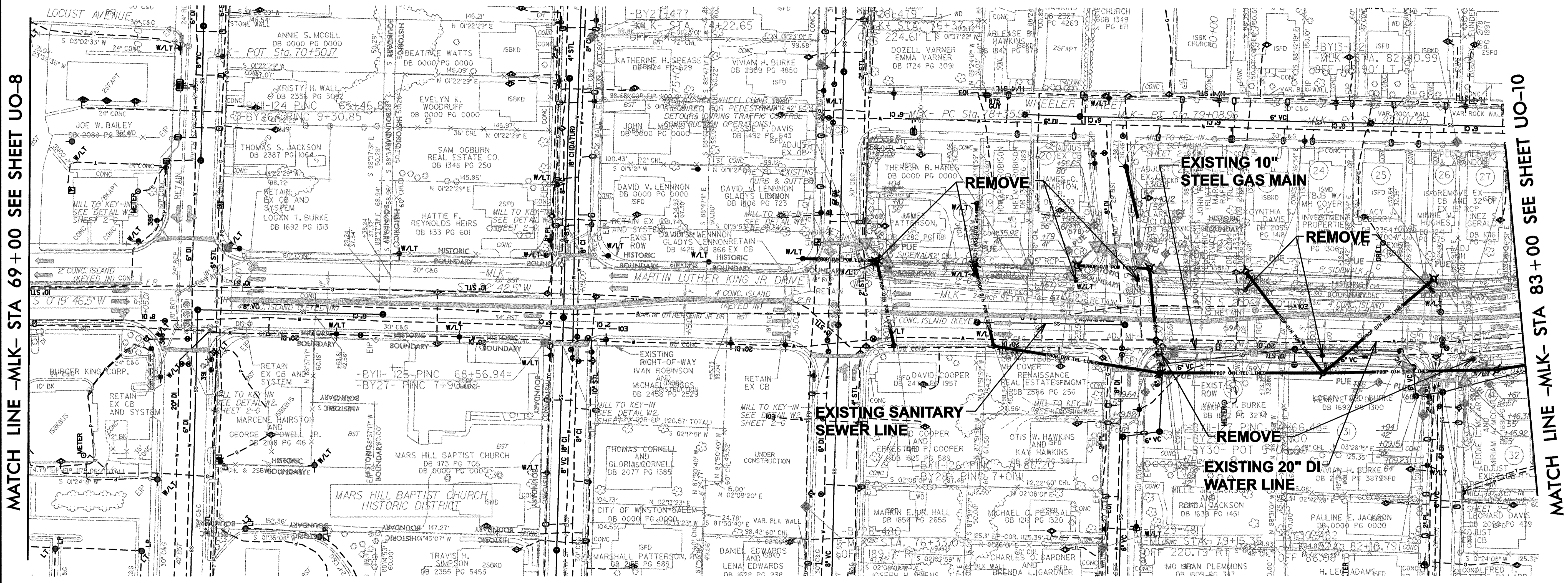
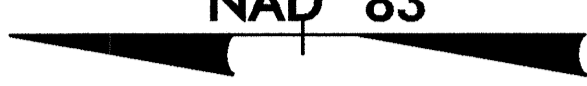
EAS. WINSTON ASSOCIATES DB 1359 PG 259

FILEL\$ DATEL\$

UTILITIES BY OTHERS

**NOTE: ALL WATER AND SEWER RELOCATION WORK
WILL BE DONE BY THE CITY OF WINSTON-SALEM.
CITY OF WINSTON-SALEM WATER/SEWER CONTACT:
MIKE PATTON (336) 771-5121**

NAD 83



MATCH LINE -MLK- STA 69+00 SEE SHEET UO-8

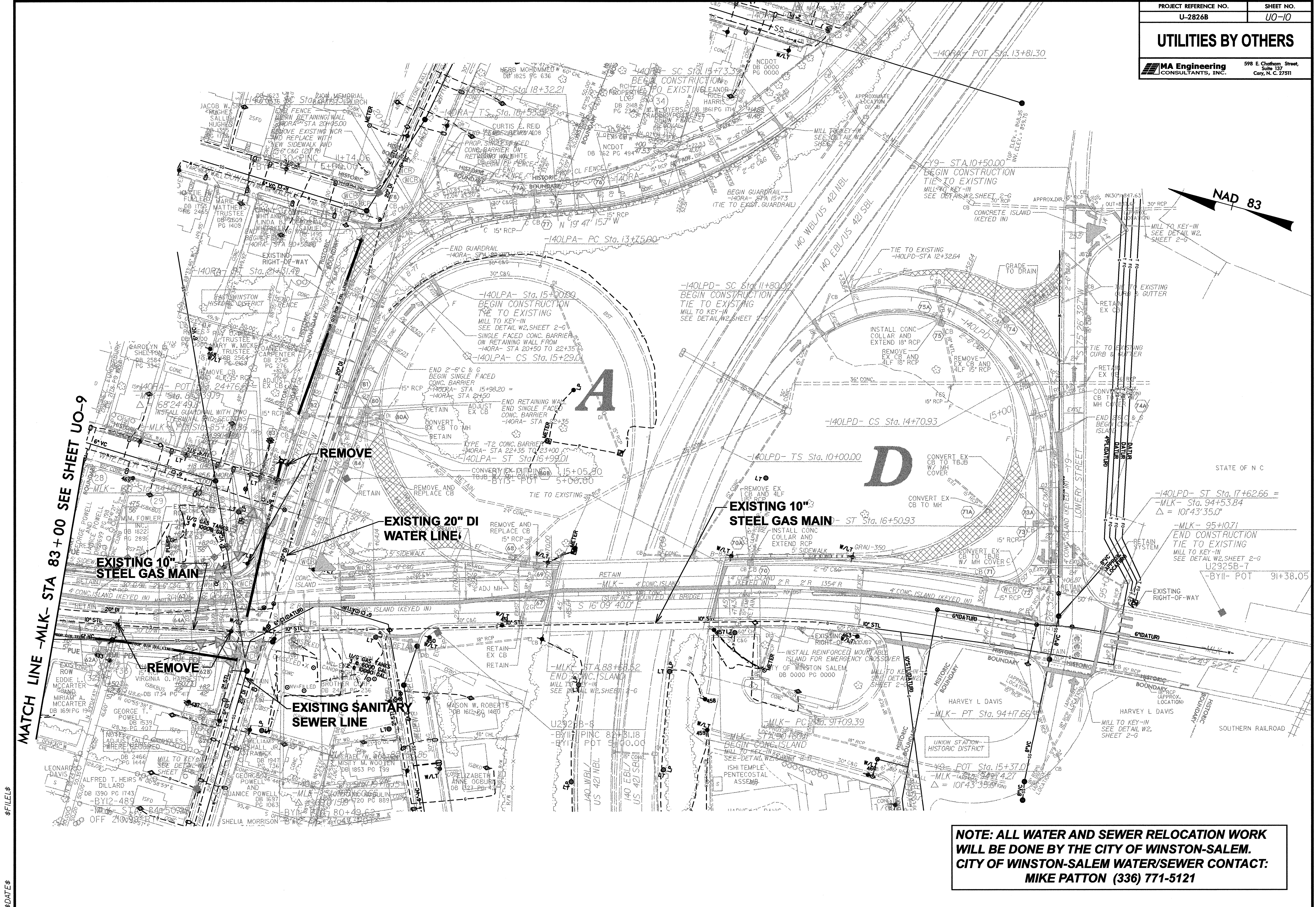
MATCH LINE -MLK- STA 83+00 SEE SHEET UO-10

\$DATE\$

\$FILEL\$

UTILITIES BY OTHERS

MA Engineering CONSULTANTS, INC. 598 E. Chatham Street, Suite 137, Cary, N.C. 27511



MATCH LINE -MLK- STA 83+00 SEE SHEET UO-9

\$ FILEL\$
\$ DATEL\$

NOTE: ALL WATER AND SEWER RELOCATION WORK WILL BE DONE BY THE CITY OF WINSTON-SALEM. CITY OF WINSTON-SALEM WATER/SEWER CONTACT: MIKE PATTON (336) 771-5121