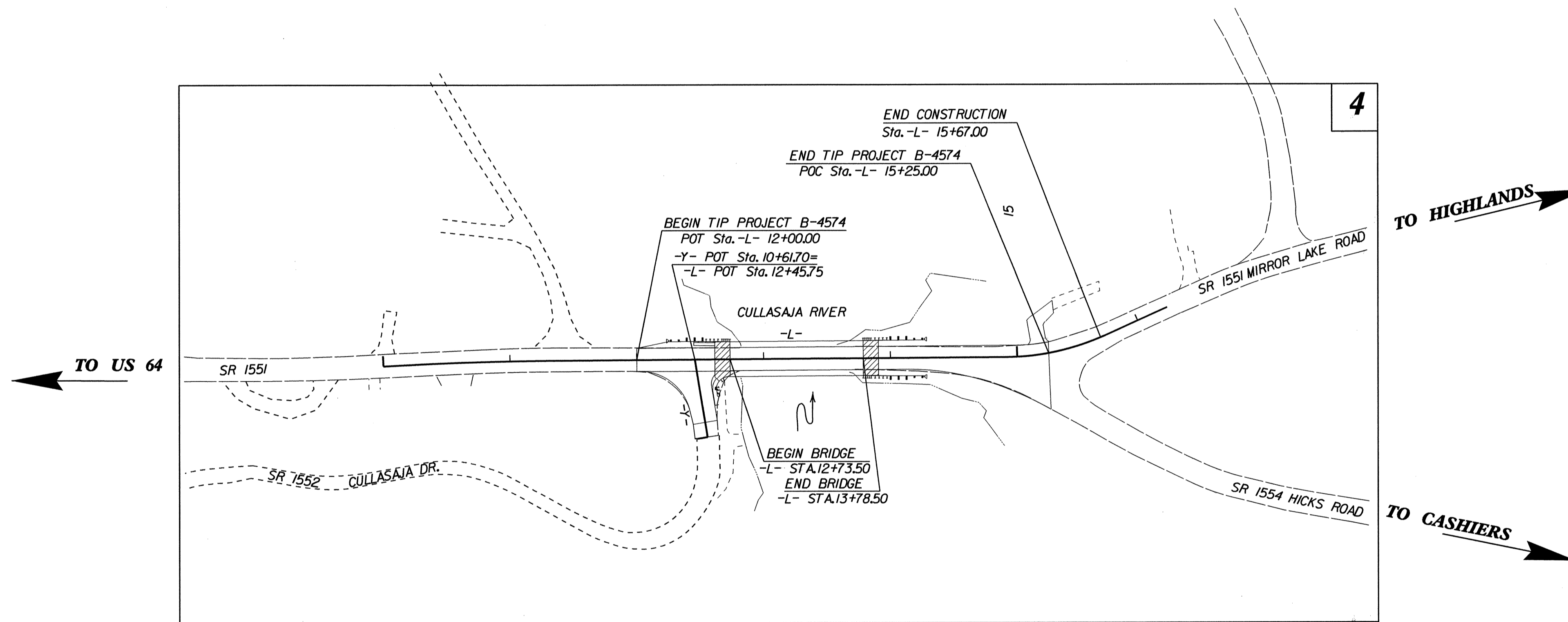
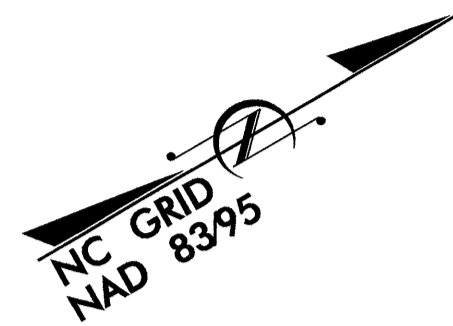


TIP PROJECT: B-4574

STATE OF NORTH CAROLINA
 DIVISION OF HIGHWAYS
 PLAN FOR PROPOSED
 HIGHWAY EROSION CONTROL
MACON COUNTY

LOCATION: BRIDGE # 58 OVER THE CULLASAJA RIVER ON SR 1551 (MIRROR LAKE ROAD)
TYPE OF WORK: GRADING, DRAINAGE, PAVING, STRUCTURE



STATE	STATE PROJECT REFERENCE NO.	SHEET NO.	TOTAL SHEETS
N.C.	B-4574	EC-1	
STATE PROJ. NO.	F.A. PROJ. NO.	DESCRIPTION	

EROSION AND SEDIMENT CONTROL MEASURES

Std. #	Description	Symbol
1630.05	Temporary Silt Ditch	TD
1630.05	Temporary Diversion	TD
1605.01	Temporary Silt Fence	III III III
1606.01	Special Sediment Control Fence	△△△△△
1622.01	Temporary Berms and Slope Drains	— T —
	Silt Basin Type B	▧
1633.01	Temporary Rock Silt Check Type-A	▨
	Temporary Rock Silt Check Type-A with Matting and Polyacrylamide (PAM)	▨
	Temporary Rock Silt Check Type-B	▨
	Wattle / Coir Fiber Wattle	— W —
	Wattle / Coir Fiber Wattle with Polyacrylamide (PAM)	— W —
1634.01	Temporary Rock Sediment Dam Type-A	▩
1634.02	Temporary Rock Sediment Dam Type-B	▩
1635.01	Rock Pipe Inlet Sediment Trap Type-A	⊓
1635.02	Rock Pipe Inlet Sediment Trap Type-B	⊓
1630.04	Stilling Basin	▭
1630.06	Special Stilling Basin	▭
	Rock Inlet Sediment Trap:	
1632.01	Type A	A
1632.02	Type B	B
1632.03	Type C	C
	Skimmer Basin	▭
	Tiered Skimmer Basin	▭
	Infiltration Basin	▭

THIS PROJECT CONTAINS EROSION CONTROL PLANS FOR CLEARING AND GRUBBING PHASE OF CONSTRUCTION.

THIS PROJECT HAS BEEN DESIGNED TO SENSITIVE WATERSHED STANDARDS.

ENVIRONMENTALLY SENSITIVE AREA(S) EXIST ON THIS PROJECT
 Refer To E. C. Special Provisions for Special Considerations.

GRAPHIC SCALE

0

 PLANS

0

 PROFILE (HORIZONTAL)

0

 PROFILE (VERTICAL)

ROADSIDE ENVIRONMENTAL UNIT
 DIVISION OF HIGHWAYS
 STATE OF NORTH CAROLINA

Prepared in the Office of:
ROADSIDE ENVIRONMENTAL UNIT
 1 South Wilmington St.
 Raleigh, NC 27611
2006 STANDARD SPECIFICATIONS

Roadway Standard Drawings

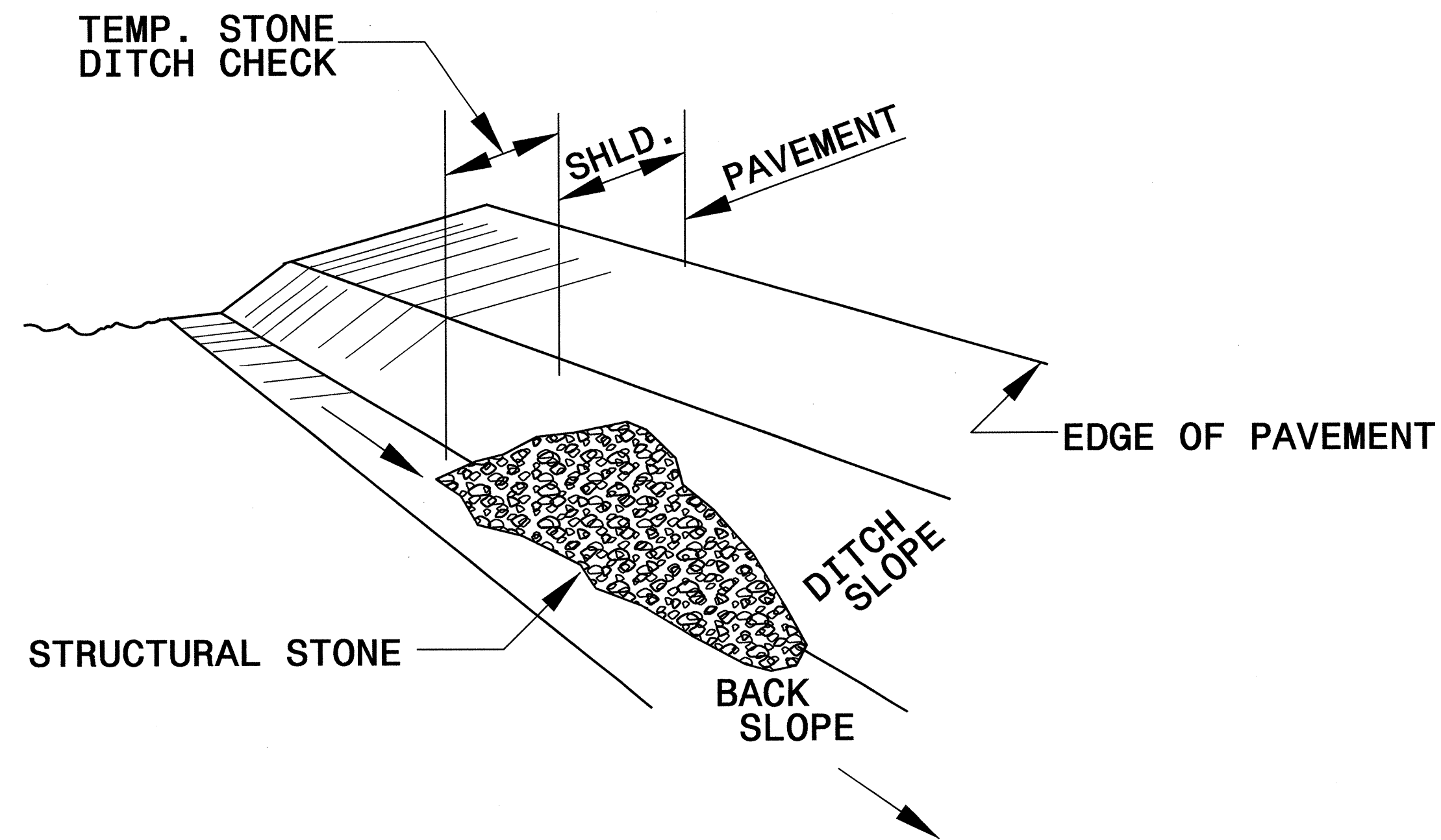
The following roadway english standards as appear in "Roadway Standard Drawings"- Roadway Design Unit - N. C. Department of Transportation - Raleigh, N. C., dated July 18, 2006 and the latest revision thereto are applicable to this project and by reference hereby are considered a part of these plans.

1605.01 Temporary Silt Fence	1630.06 Special Stilling Basin
1606.01 Special Sediment Control Fence	1633.01 Temporary Rock Silt Check Type A
1607.01 Gravel Construction Entrance	1635.02 Rock Pipe Inlet Sediment Trap Type B
1622.01 Temporary Berms and Slope Drains	

20 OCT 2006 11:00
 R:\ENR\Comm\02\2006\B-4574-EC-1.dgn
 jemmfer@ncdot.gov

PROJECT REFERENCE NO. B-4574	SHEET NO. EC-2
RW SHEET NO.	
ROADWAY DESIGN ENGINEER	HYDRAULICS ENGINEER

TEMPORARY ROCK SILT CHECK TYPE 'B' DETAIL

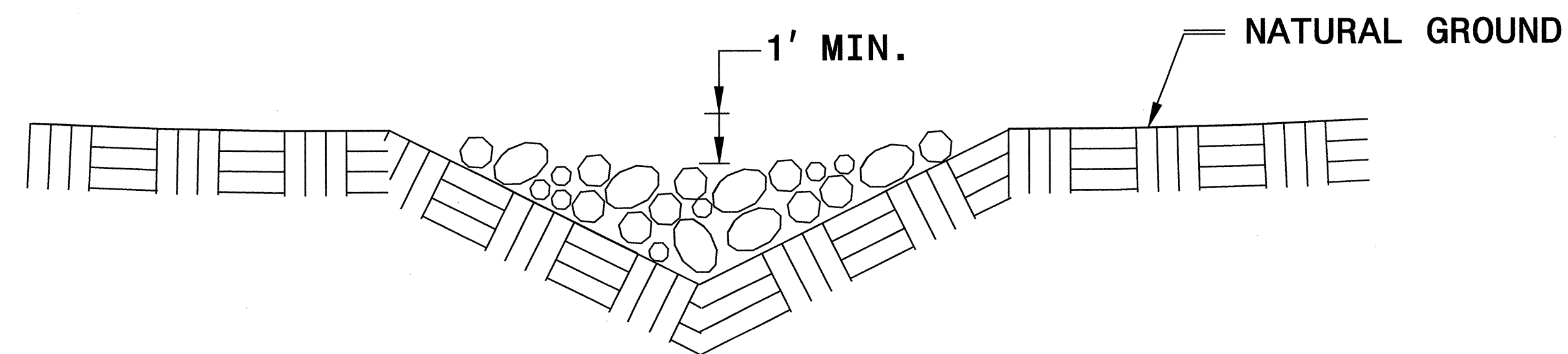


ISOMETRIC VIEW

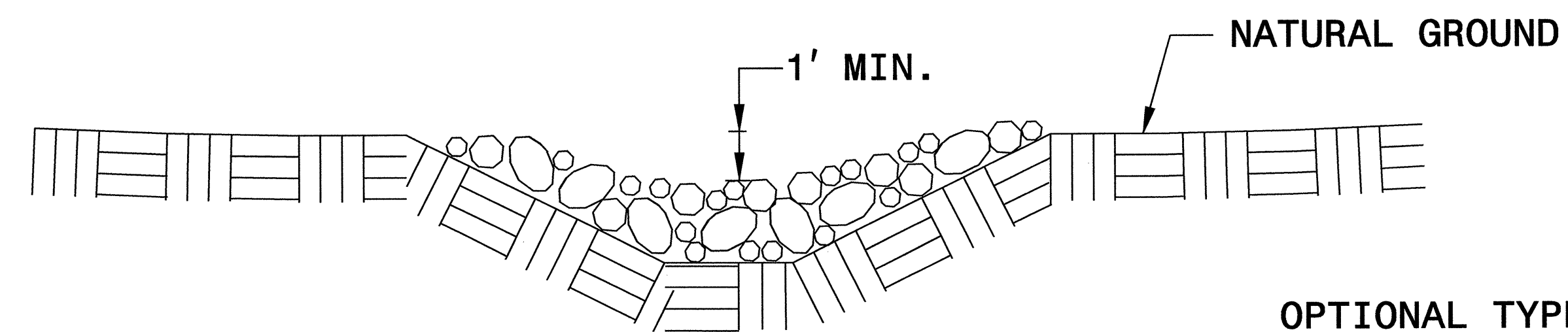
NOTES:

USE CLASS 'B' EROSION CONTROL STONE FOR STRUCTURAL STONE.

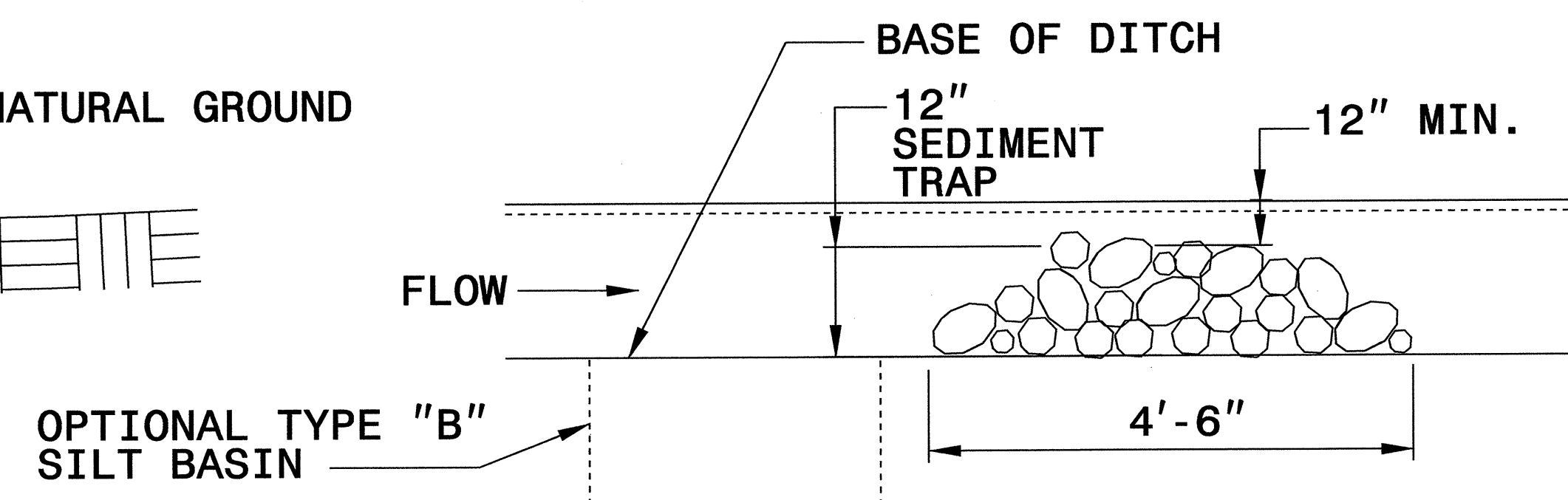
THE ENGINEER MAY DIRECT THE OPTION OF CLASS "A" STONE FOR SITES HAVING LESS THAN ONE (1) ACRE DRAINAGE AREA AND A DITCH GRADE LESS THAN 3%.



**CROSS SECTION
VEE DITCH**



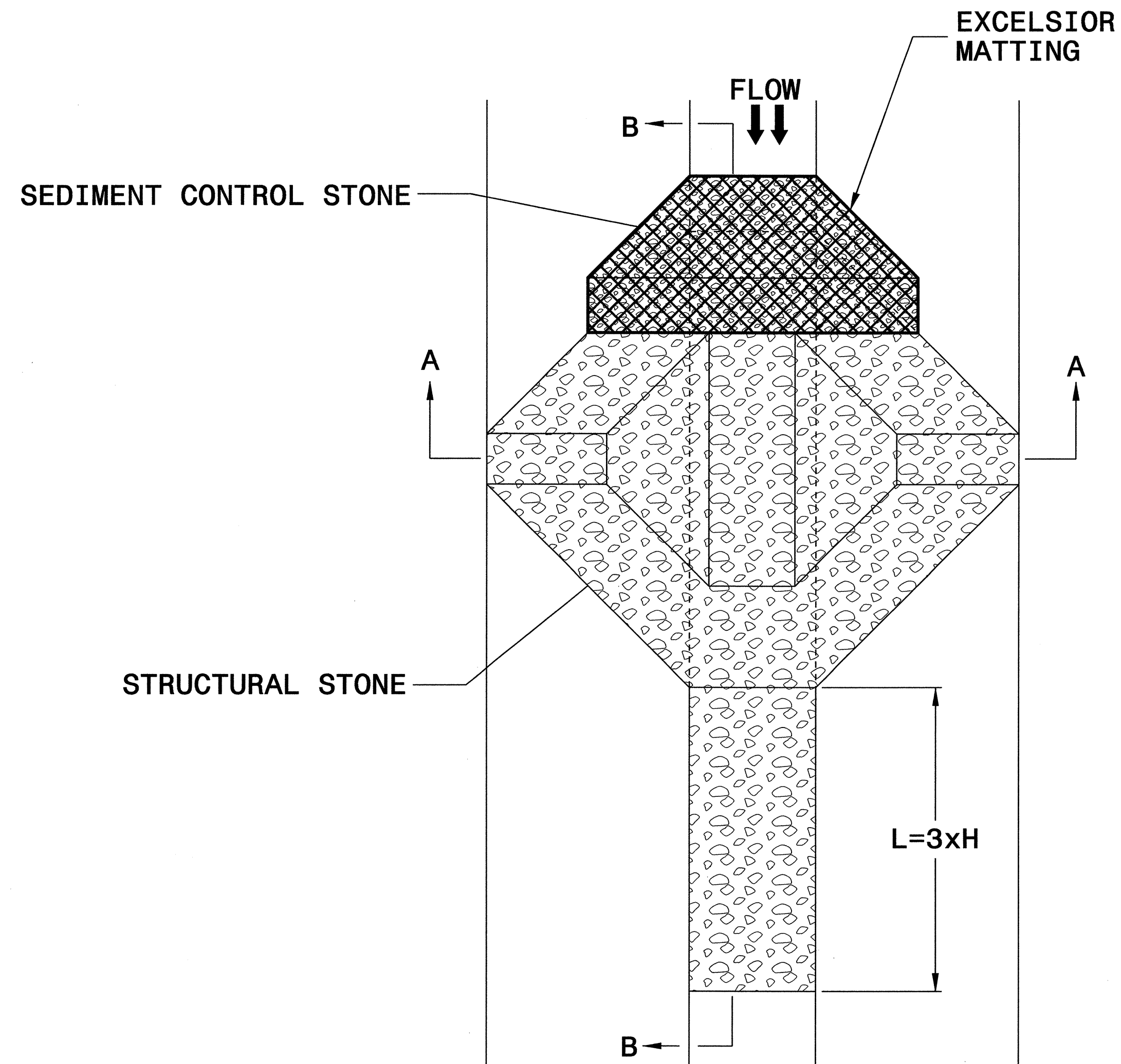
**CROSS SECTION
TRAPEZOIDAL DITCH**



ELEVATION VIEW

PROJECT REFERENCE NO. B-4574	SHEET NO. EC-2A
RW SHEET NO.	
ROADWAY DESIGN ENGINEER	HYDRAULICS ENGINEER

TEMPORARY ROCK SILT CHECK TYPE 'A' WITH EXCELSIOR MATTING AND POLYACRYLAMIDE (PAM)



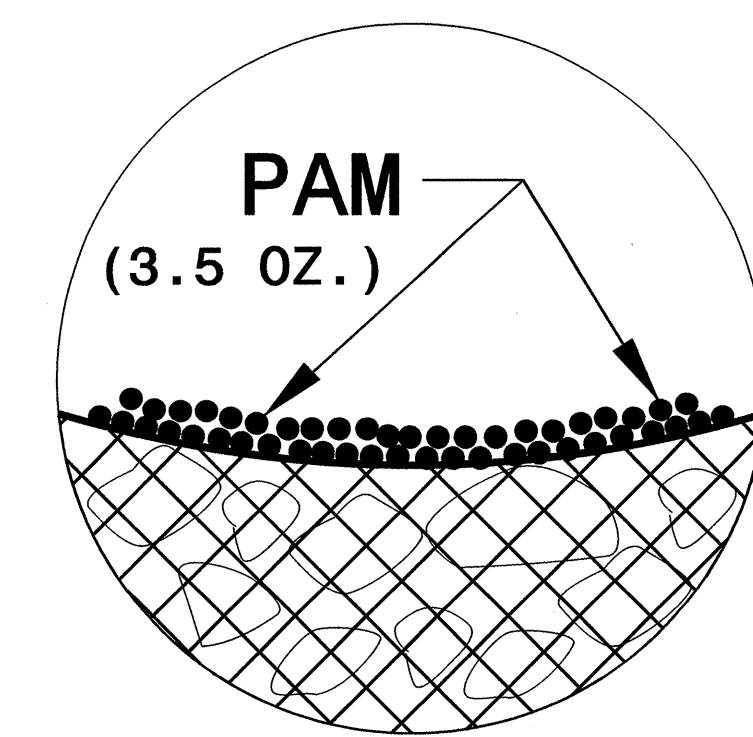
PLAN

NOTES

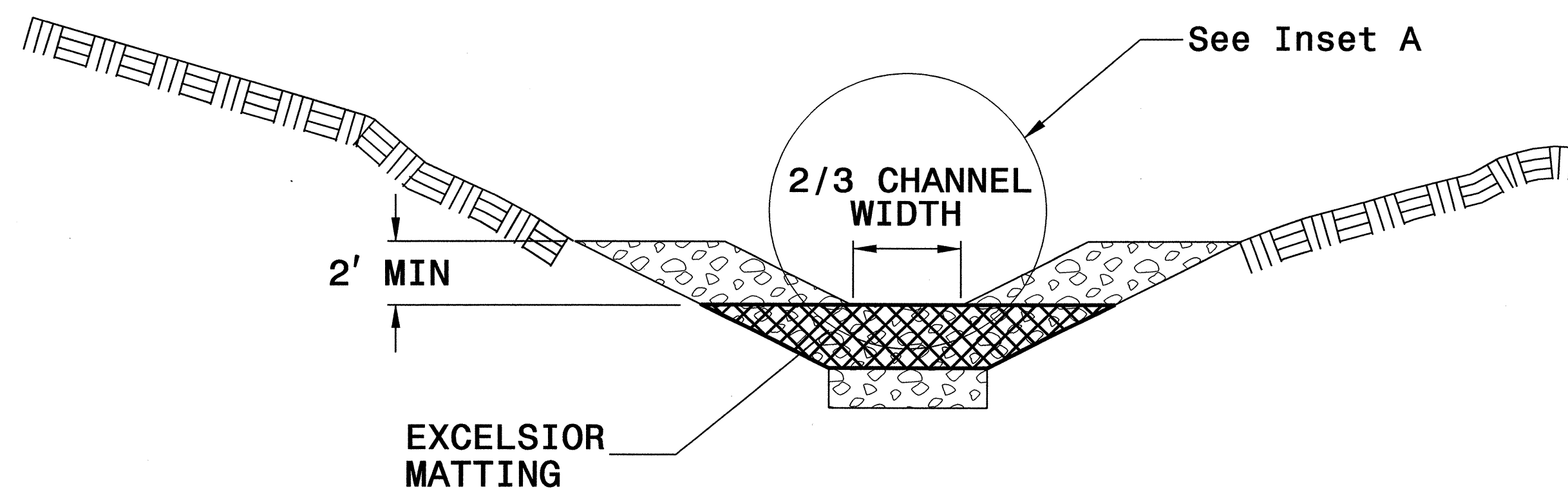
USE EXCELSIOR FOR MATTING MATERIAL AND ANCHOR MATTING SECTION AT TOP AND BOTTOM WITH CLASS B STONE.

PRIOR TO POLYACRYLAMIDE (PAM) APPLICATION, OBTAIN A SOIL SAMPLE FROM PROJECT LOCATION, AND FROM OFFSITE MATERIAL, AND ANALYZE FOR APPROPRIATE PAM FLOCCULANT TO BE APPLIED TO EACH ROCK SILT CHECK.

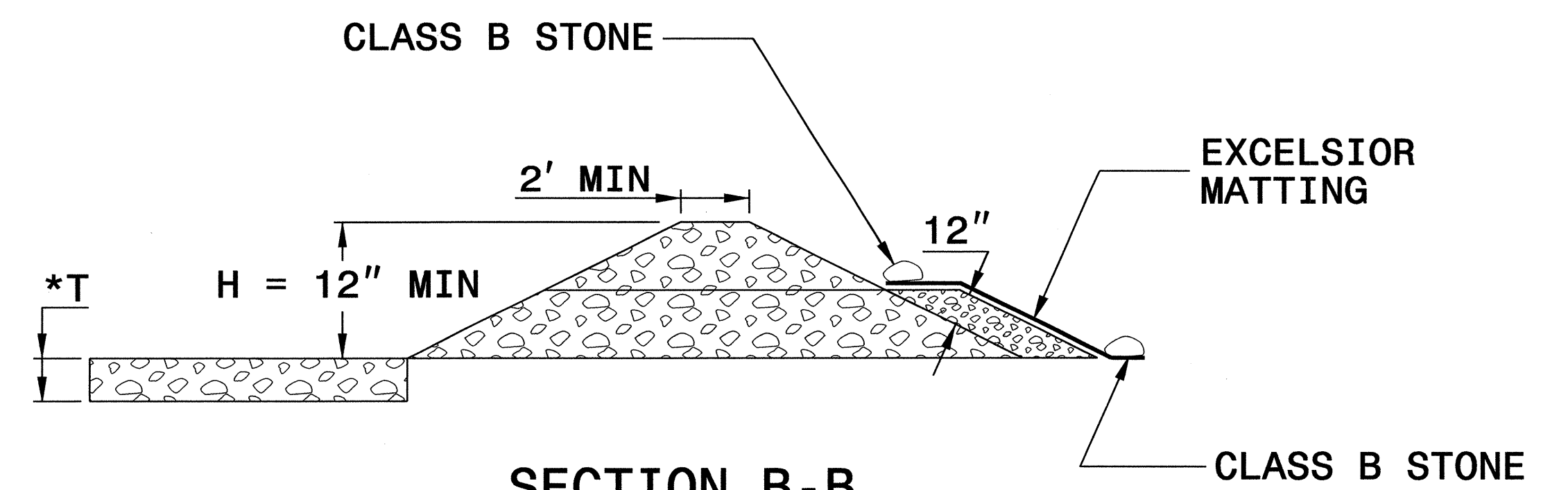
INITIALLY APPLY 3.5 OUNCES OF POLYACRYLAMIDE (PAM) TO TOP OF MATTING SECTION AND AFTER EVERY RAINFALL EVENT THAT EQUALS OR EXCEEDS 0.50 INCHES.



INSET A



SECTION A-A



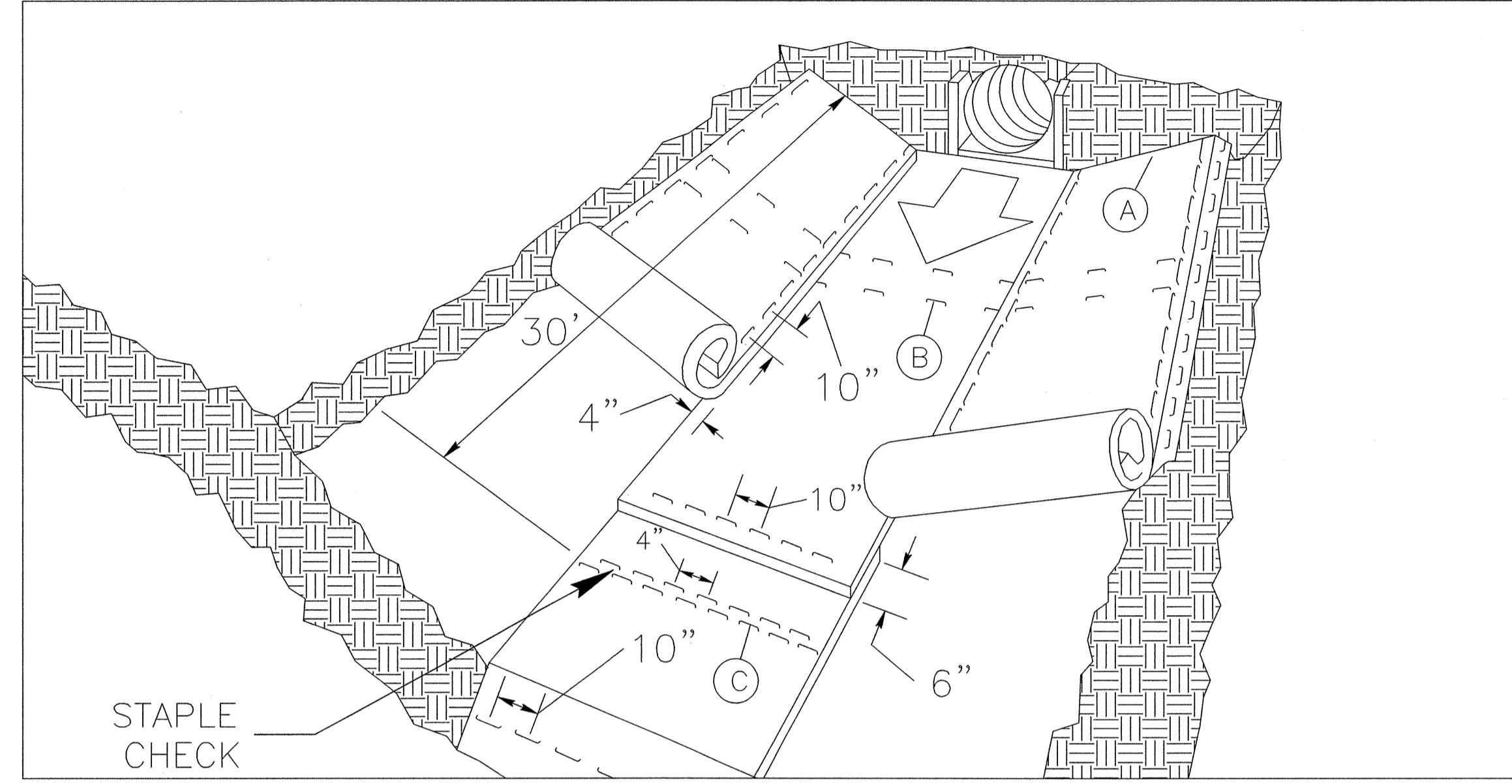
SECTION B-B

*T = 12" MIN., 18" MAX.

NOT TO SCALE

PROJECT REFERENCE NO. B-4574	SHEET NO. EC-2B
RW SHEET NO.	
ROADWAY DESIGN ENGINEER	HYDRAULICS ENGINEER

MATTING INSTALLATION DETAIL



MATTING IN DITCHES

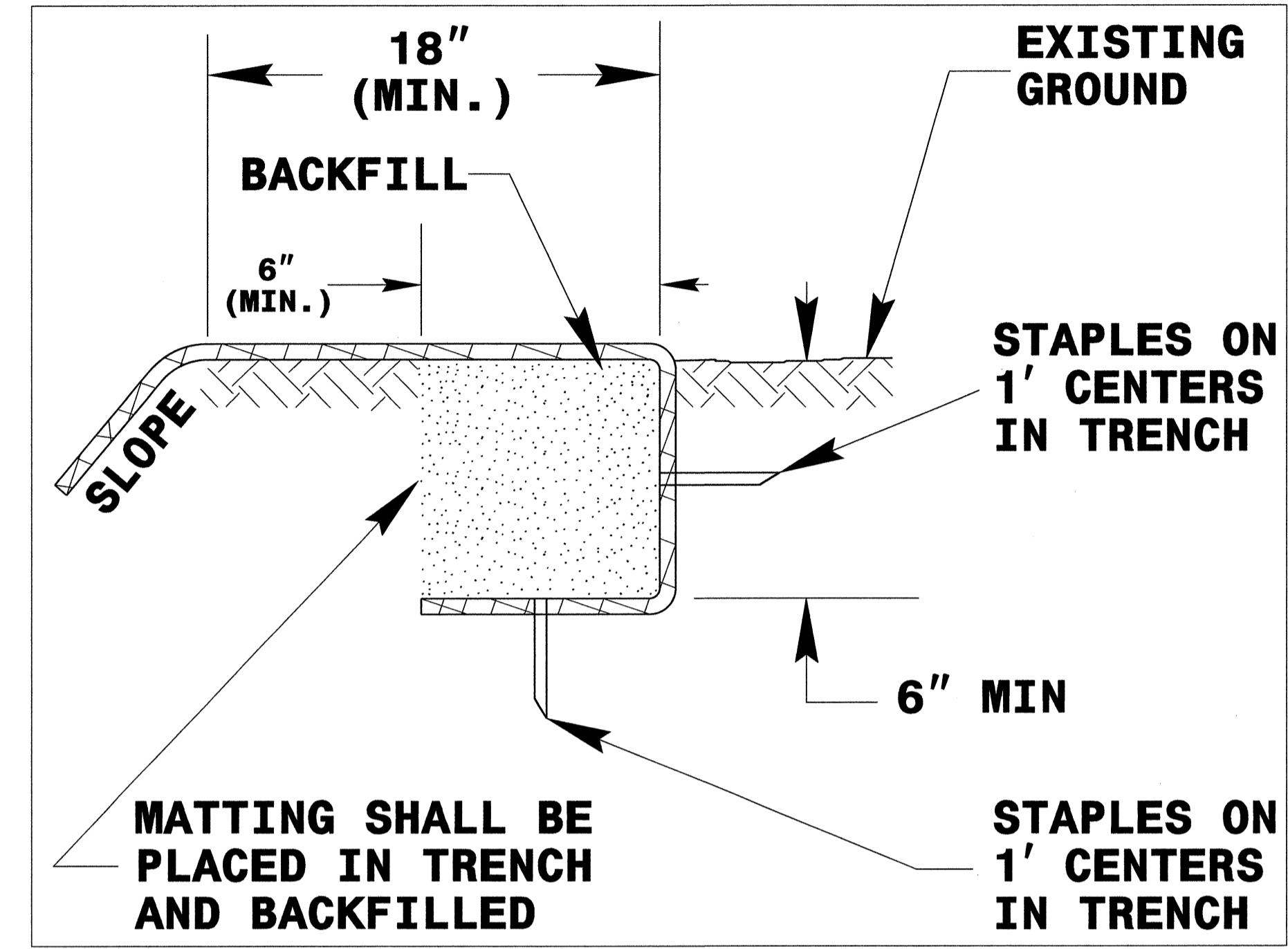
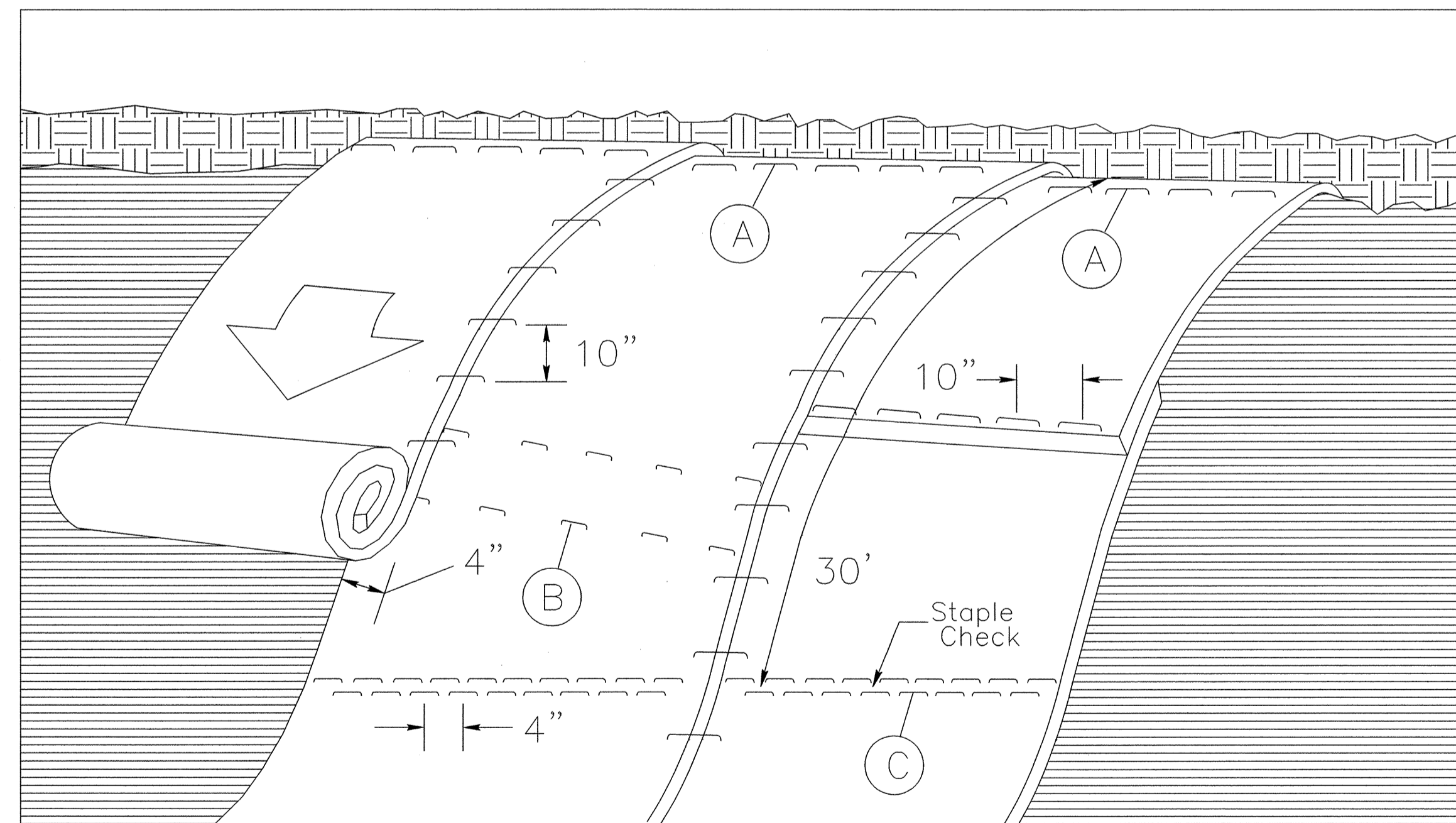


DIAGRAM (A)



MATTING ON SLOPES

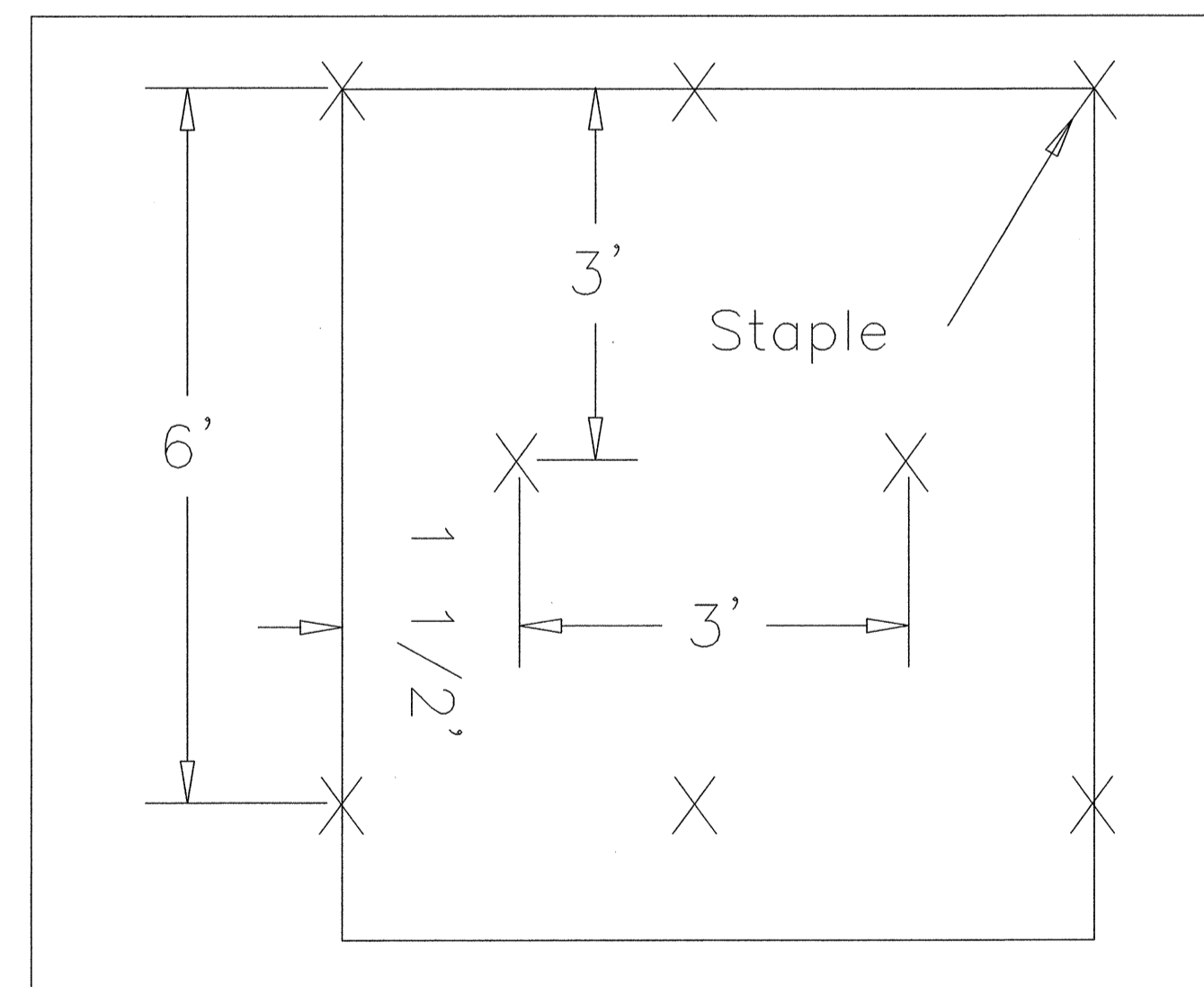


DIAGRAM (B)

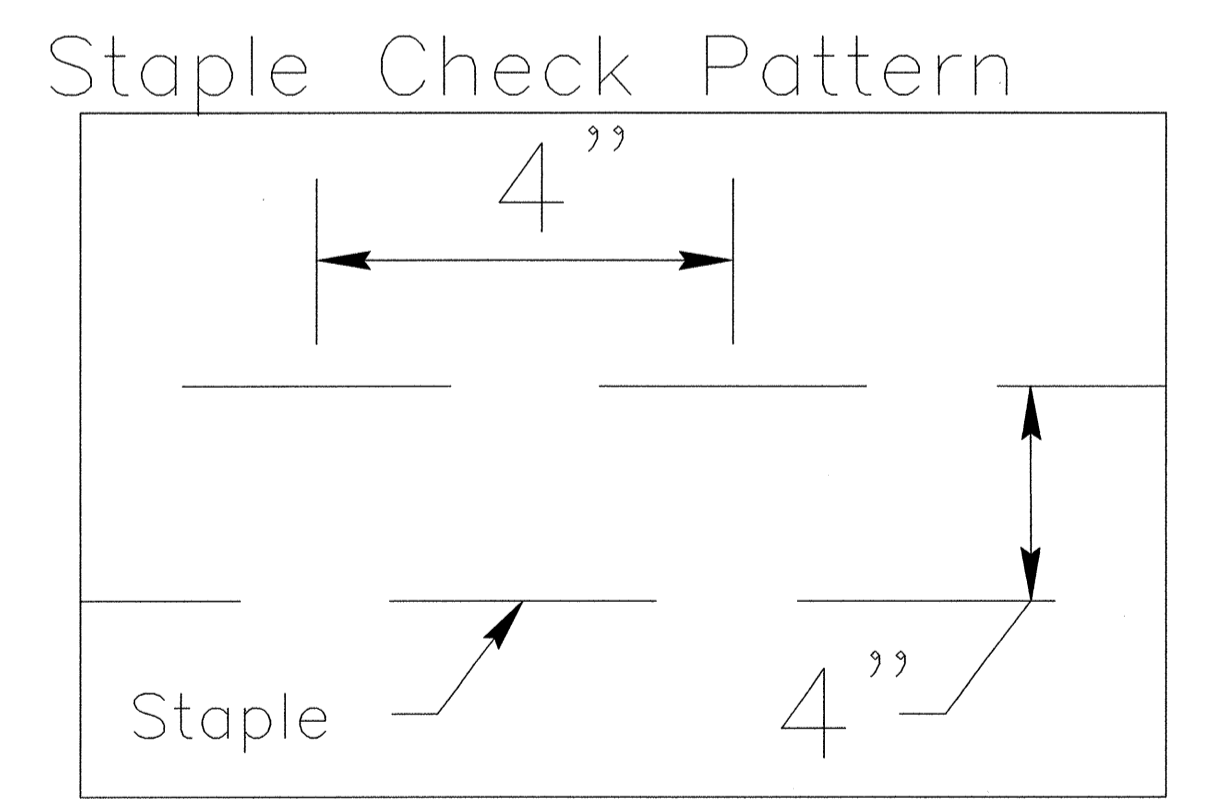


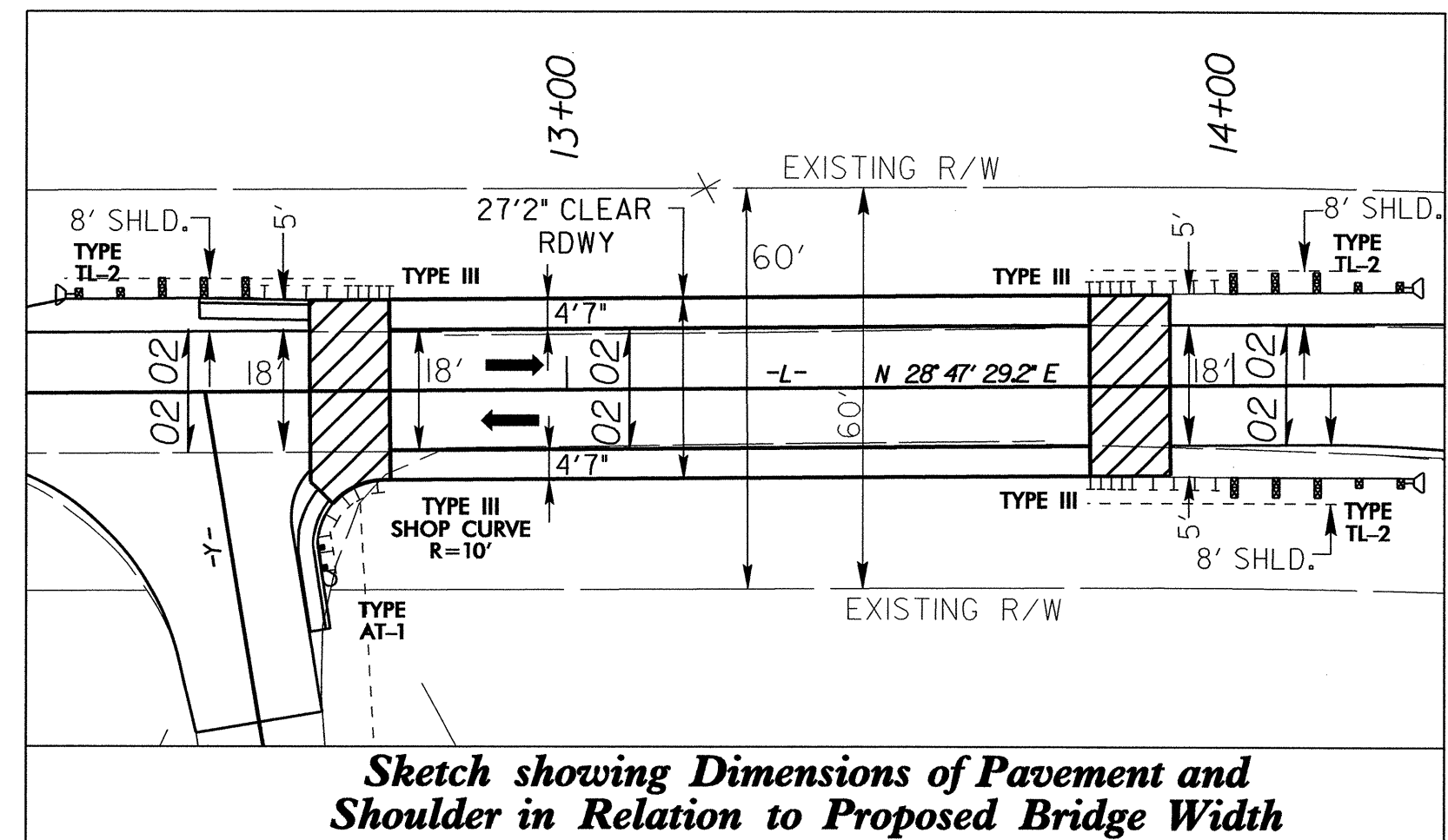
DIAGRAM (C)

NOTES:

THIS DETAIL APPLIES TO STRAW, EXCELSIOR, AND PERMANENT SOIL REINFORCEMENT MAT (PSRM) INSTALLATION.
 STAPLES SHALL BE NO. 11 GAUGE STEEL WIRE FORMED INTO A "U" SHAPE WITH A MINIMUM THROAT WIDTH OF 1 INCH AND NOT LESS THAN 6 INCHES IN LENGTH.

NOT TO SCALE

PROJECT REFERENCE NO.		SHEET NO.	
B-4574		EC-4/CONST.4	
RW SHEET NO.			
ROADWAY DESIGN ENGINEER		HYDRAULICS ENGINEER	



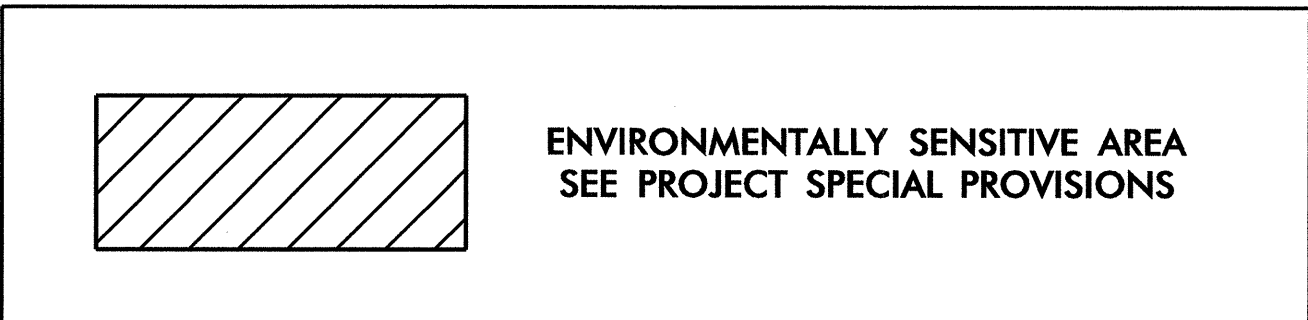
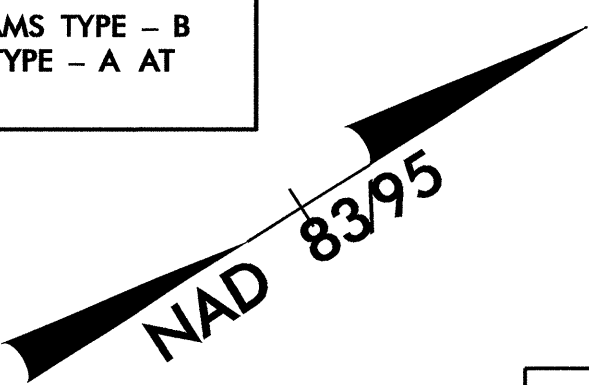
Sketch showing Dimensions of Pavement and Shoulder in Relation to Proposed Bridge Width

-L-

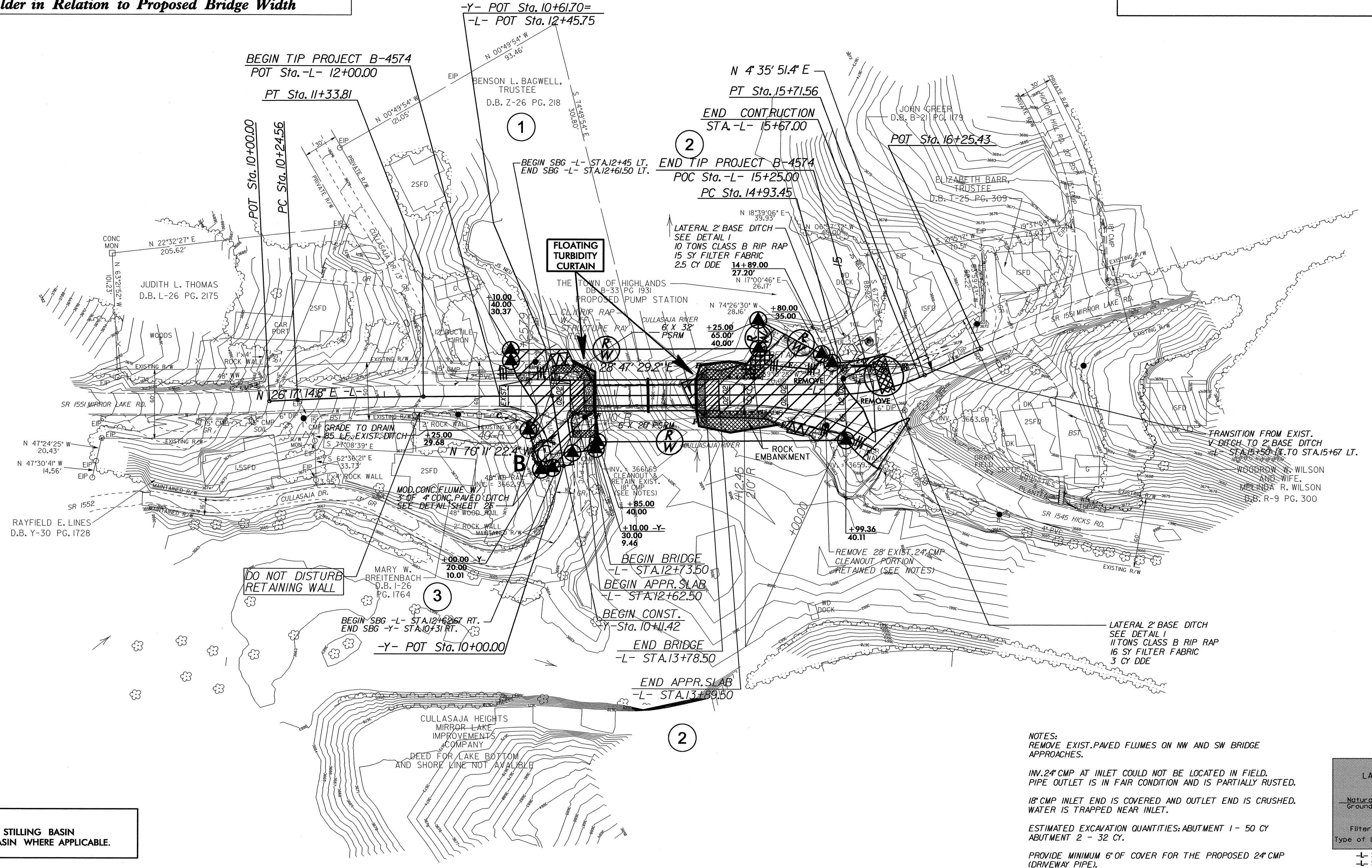
PI Sta 10+79.19	PI Sta 15+33.10
$\Delta = 2' 30'' 14.4''$ (RT)	$\Delta = 24' 11'' 37.8''$ (LT)
$D = 2' 17'' 30.6''$	$D = 30' 58'' 14.5''$
$L = 109.26'$	$L = 78.12'$
$T = 54.64'$	$T = 39.65'$
$R = 2,500.00'$	$R = 185.00'$
$Se = NC$	$Se = NC$

CLEARING AND GRUBBING
EROSION CONTROL FOR
CONSTRUCTION SHEET 4

NOTE:
PLACE TEMPORARY ROCK SEDIMENT DAMS TYPE - B
AND TEMPORARY ROCK SILT CHECKS TYPE - A AT
DRAINAGE OUTLETS.

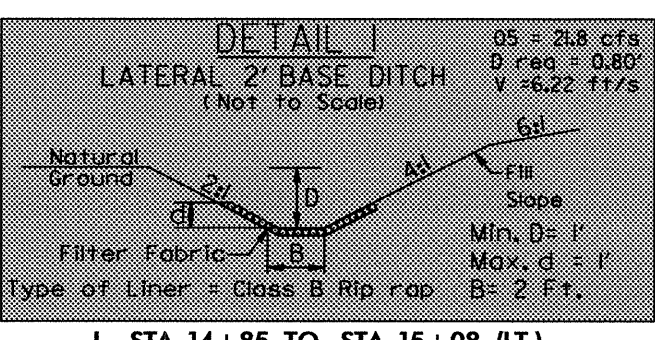


CULLASAJA HEIGHTS
MIRROR LAKE
IMPROVEMENTS
COMPANY
DEED FOR LAKE BOTTOM
AND SHORE LINE NOT AVAILABLE



NOTE:
UTILIZE SPECIAL STILLING BASIN
AS STILLING BASIN WHERE APPLICABLE.

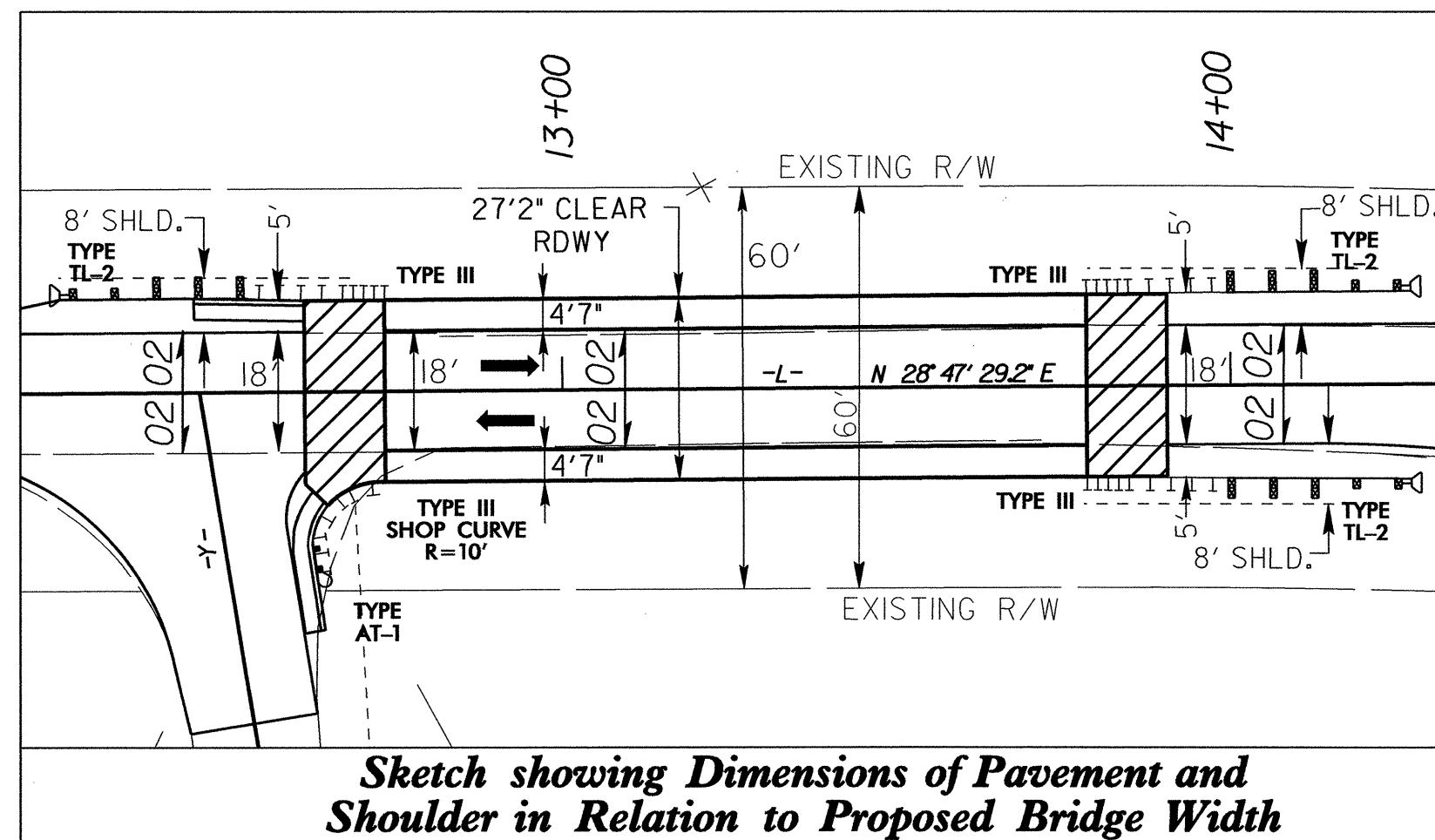
NOTES:
REMOVE EXIST. PAVED FLUMES ON MW AND SW BRIDGE
APPROACHES.
INV. 24" CMP AT INLET COULD NOT BE LOCATED IN FIELD.
PIPE OUTLET IS IN FAIR CONDITION AND IS PARTIALLY RUSTED.
18" CMP INLET END IS COVERED AND OUTLET END IS CRUSHED.
WATER IS TRAPPED NEAR INLET.
ESTIMATED EXCAVATION QUANTITIES: ABUTMENT 1 - 50 CY
ABUTMENT 2 - 32 CY.
PROVIDE MINIMUM 6" OF COVER FOR THE PROPOSED 24" CMP
(DRIVEWAY PIPE).



NOTE: SEE PLAN SHEET 5 FOR PROFILE

5/14/99
09-NOV-2010 07:45
R:\Enviromental\B4574_EC_psh04.dgn
metlab

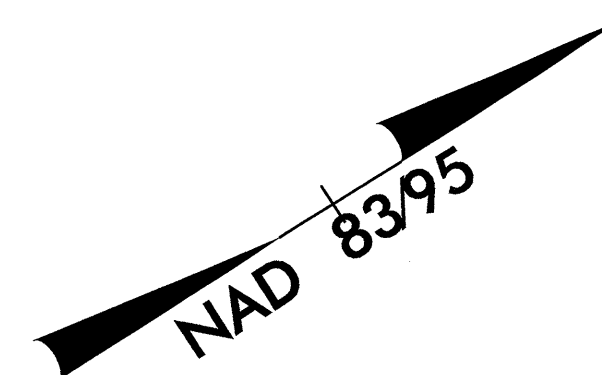
PROJECT REFERENCE NO.	SHEET NO.
B-4574	EC-5/CONST.4
RW SHEET NO.	
ROADWAY DESIGN ENGINEER	HYDRAULICS ENGINEER



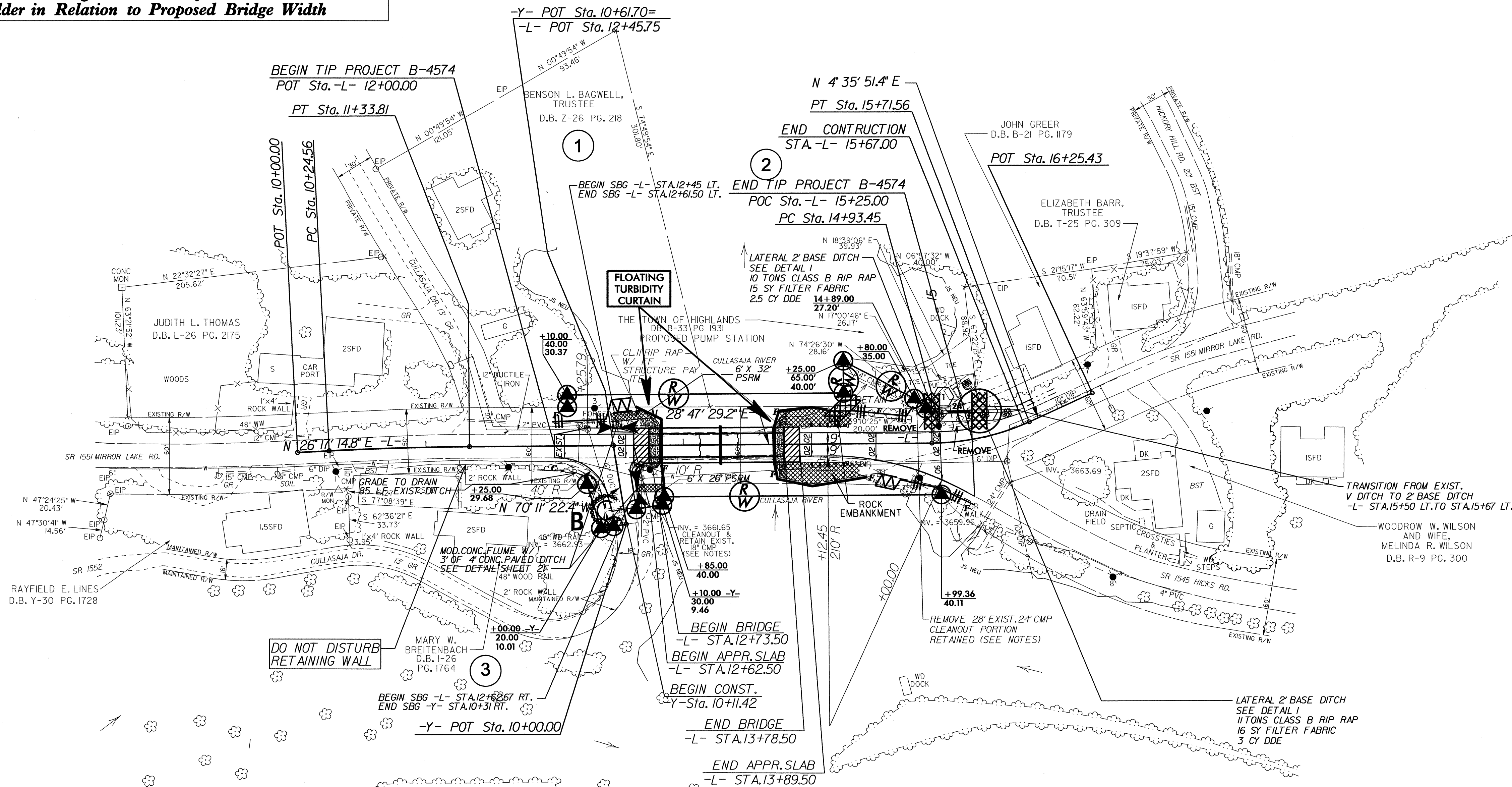
Sketch showing Dimensions of Pavement and Shoulder in Relation to Proposed Bridge Width

-L-

PI Sta 10+79.19	PI Sta 15+33.10
$\Delta = 2^\circ 30' 14.4''$ (RT)	$\Delta = 2^\circ 11' 37.8''$ (LT)
D = 2' 17" 30.6"	D = 30' 58" 14.5"
L = 109.26'	L = 78.12'
T = 54.64'	T = 39.65'
R = 2,500.00'	R = 185.00'
Se = NC	Se = NC

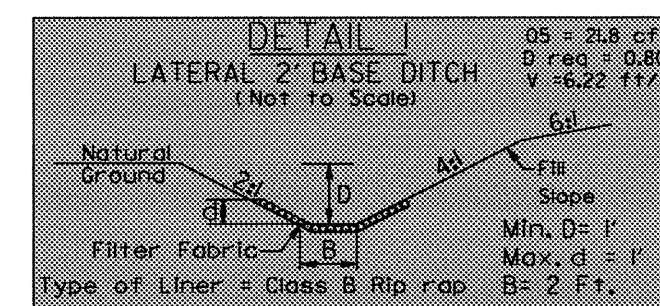


CULLASAJA HEIGHTS
MIRROR LAKE
IMPROVEMENTS
COMPANY
DEED FOR LAKE BOTTOM
AND SHORE LINE NOT AVAILABLE



NOTE:
UTILIZE SPECIAL STILLING BASIN
AS STILLING BASIN WHERE APPLICABLE.

NOTES:
REMOVE EXIST. PAVED FLUMES ON NW AND SW BRIDGE APPROACHES.
INV. 24" CMP AT INLET COULD NOT BE LOCATED IN FIELD. PIPE OUTLET IS IN FAIR CONDITION AND IS PARTIALLY RUSTED. 18" CMP INLET END IS COVERED AND OUTLET END IS CRUSHED. WATER IS TRAPPED NEAR INLET.
ESTIMATED EXCAVATION QUANTITIES: ABUTMENT 1 - 50 CY ABUTMENT 2 - 32 CY.
PROVIDE MINIMUM 6" OF COVER FOR THE PROPOSED 24" CMP (DRIVEWAY PIPE).



NOTE: SEE PLAN SHEET 5 FOR PROFILE