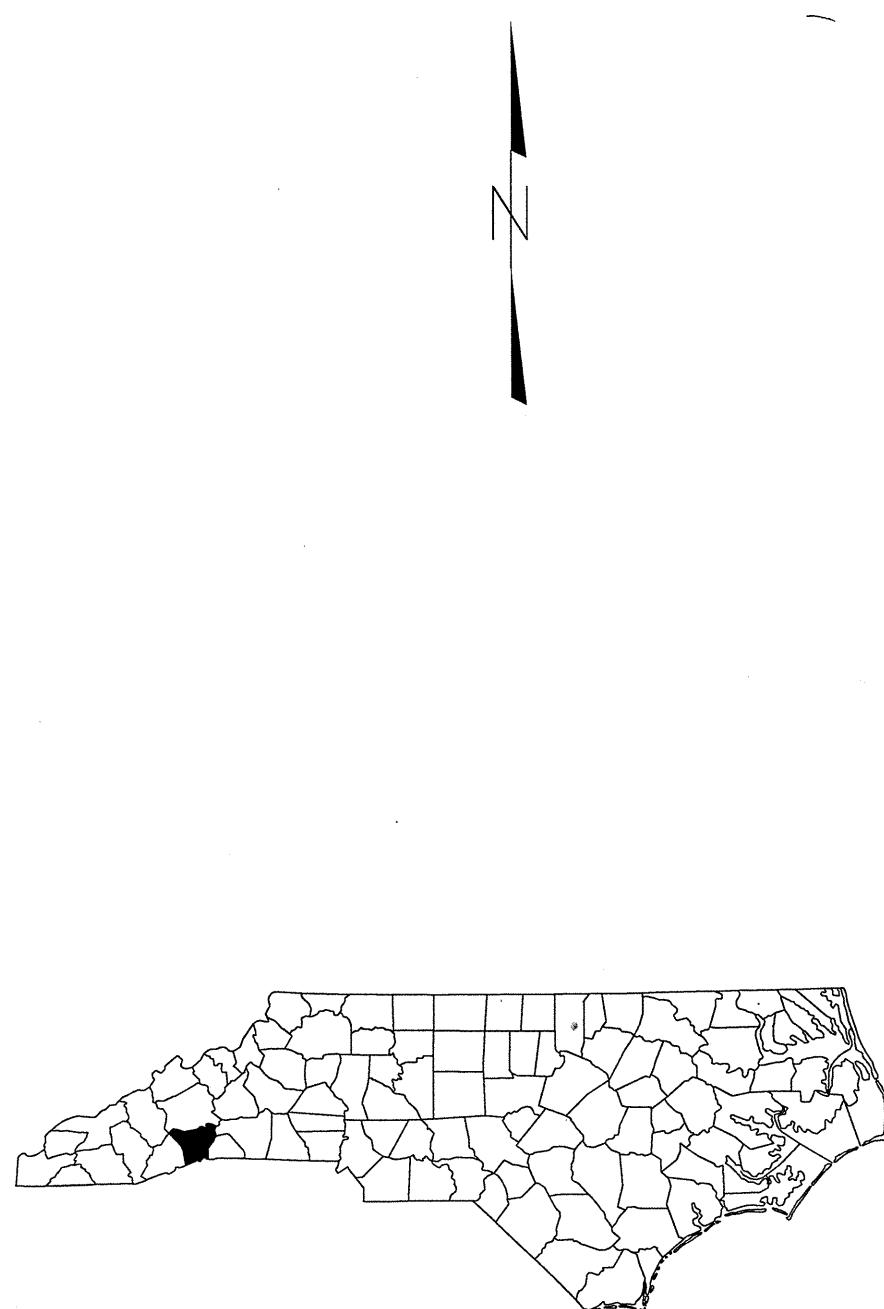
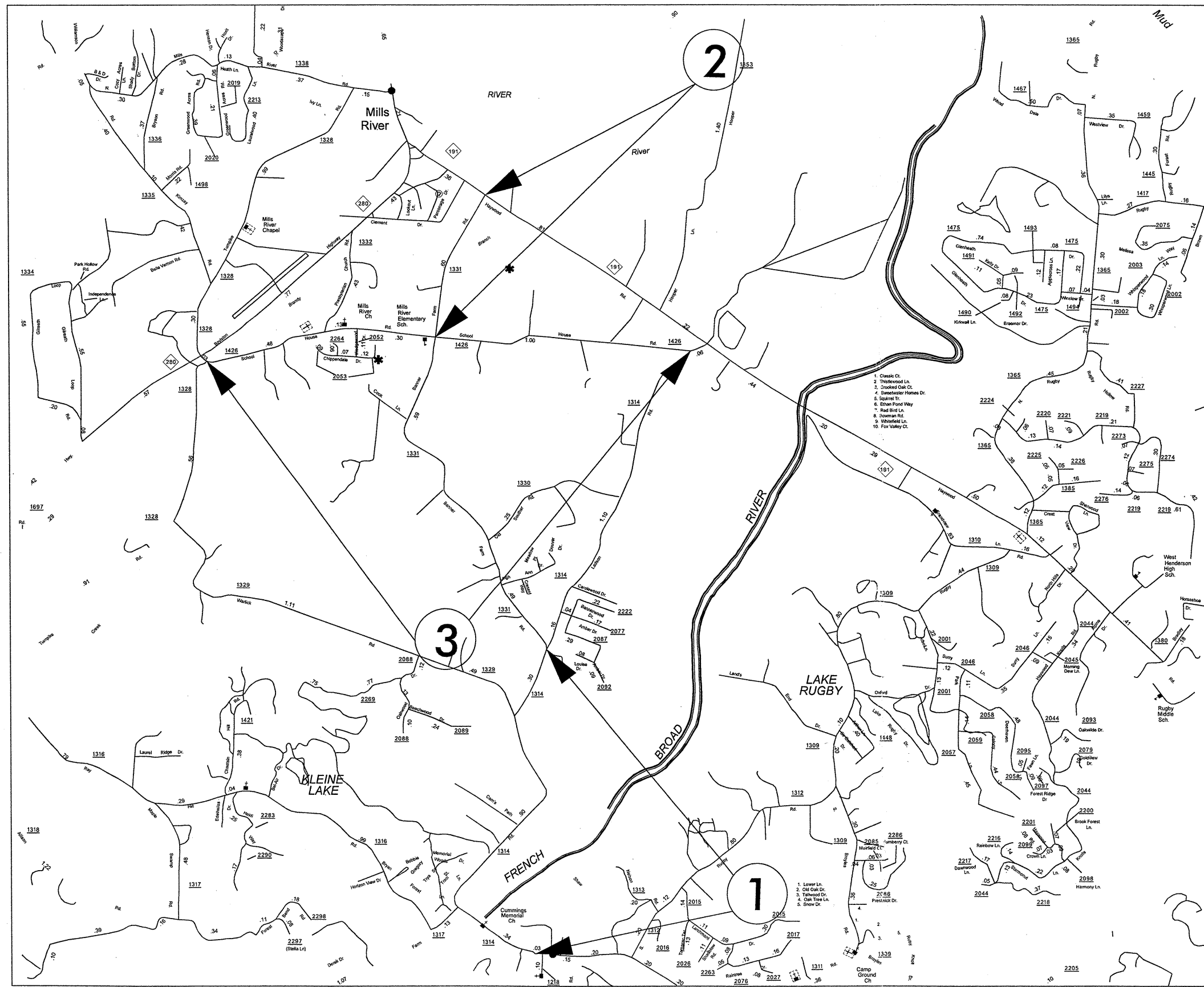


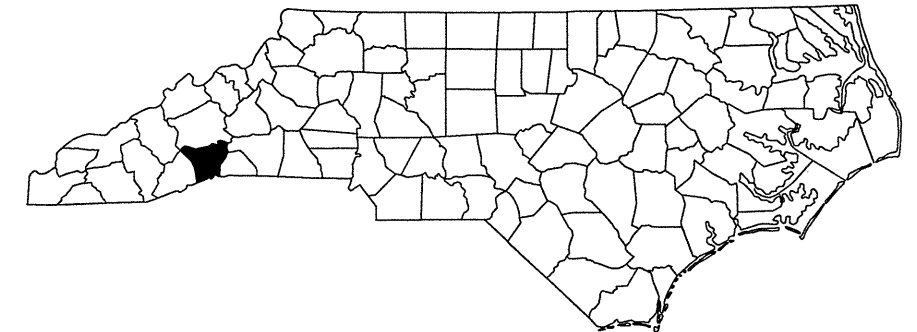
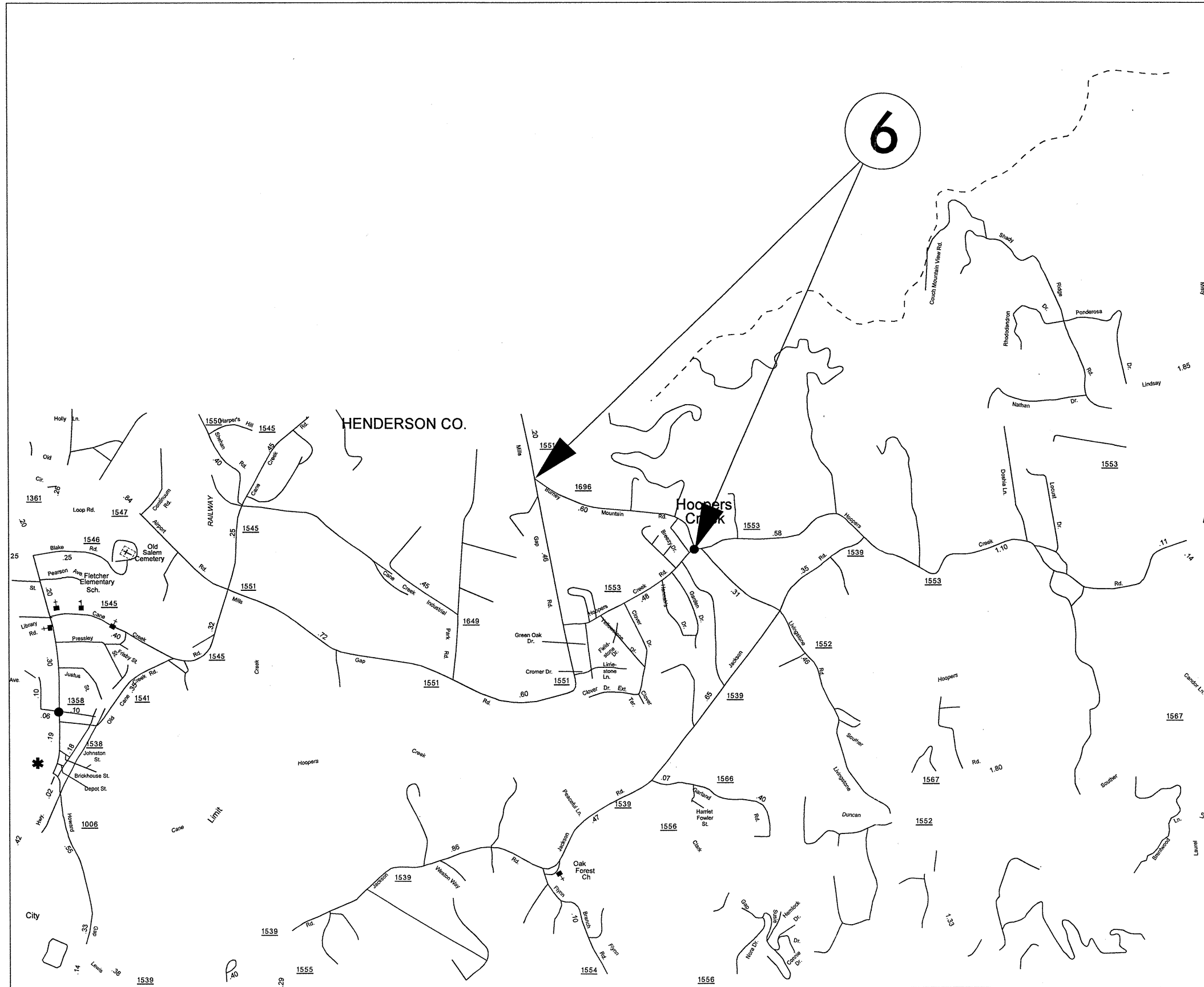
HENDERSON COUNTY

PROJECT REFERENCE NO.		SHEET NO.
14CR.20451.10		1
STATE PROJECT	F.A. PROJECT NO.	DESCRIPTION
14CR.20751.9		



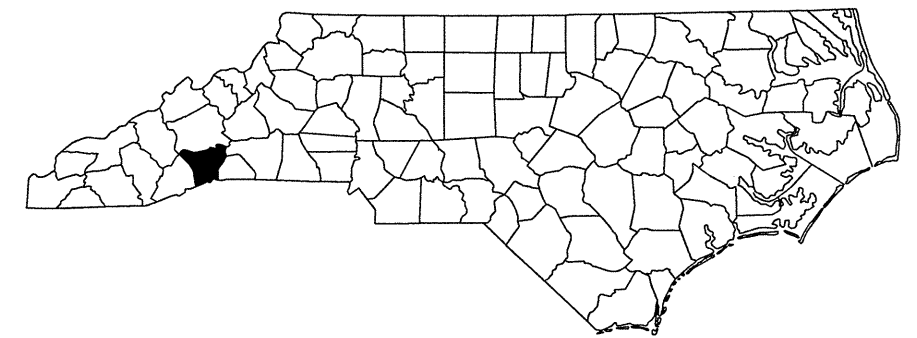
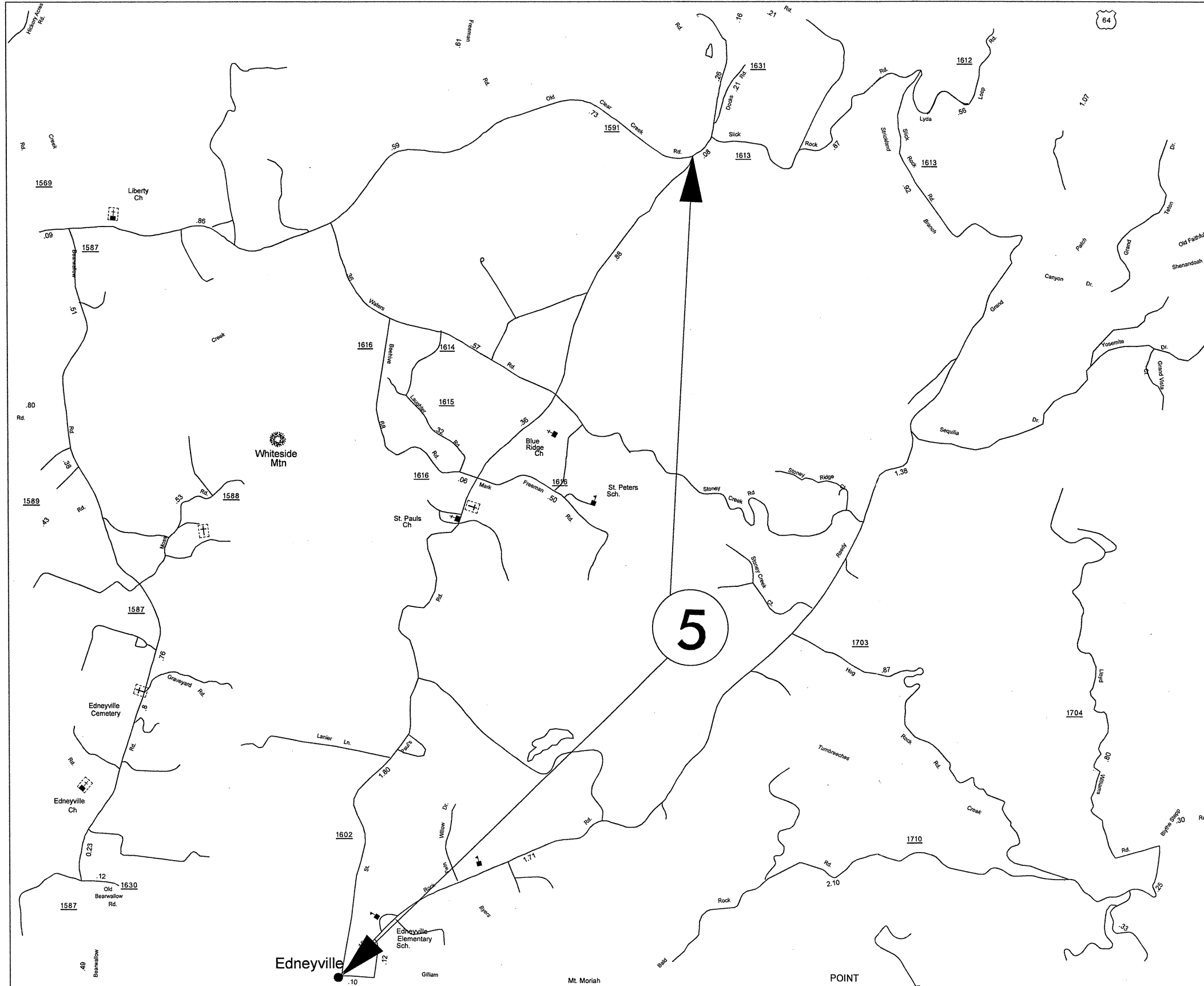
HENDERSON COUNTY

PROJECT REFERENCE NO.		SHEET NO.
14CR.20451.10		2
STATE PROJECT	F.A. PROJECT NO.	DESCRIPTION
14CR.20751.9		



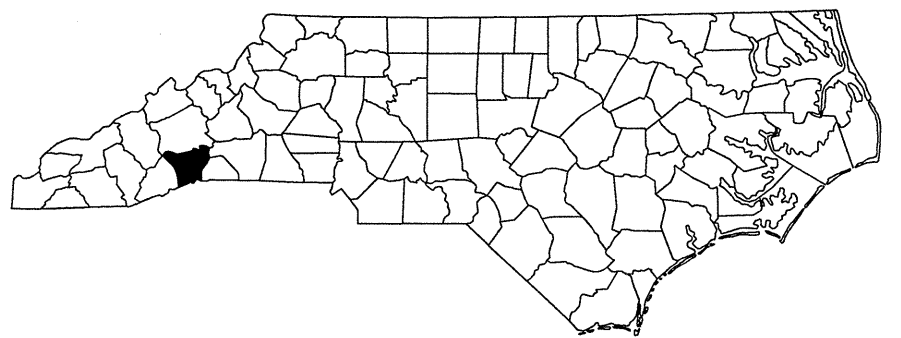
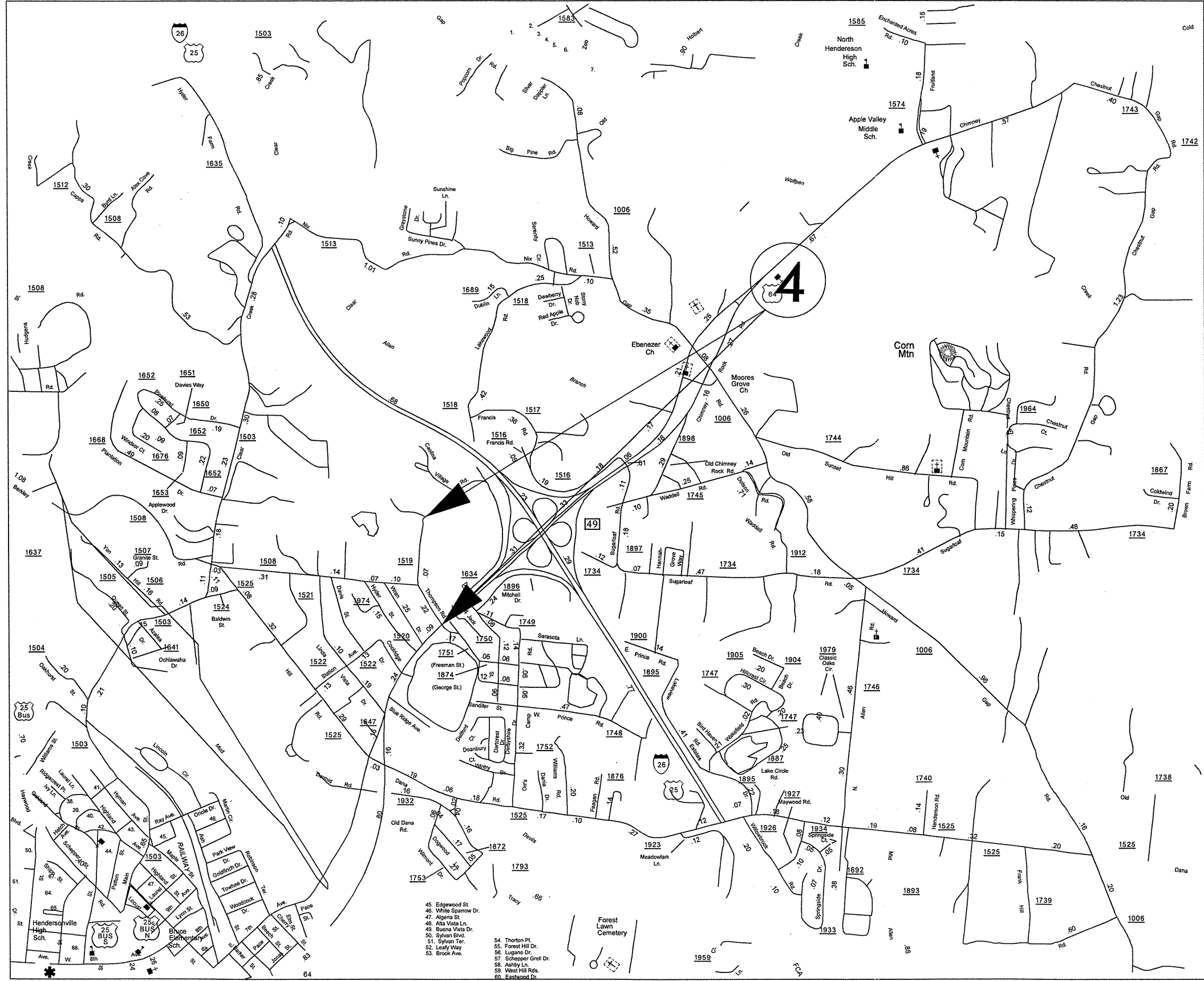
PROJECT REFERENCE NO.		SHEET NO.
14CR.20451.10		3
STATE PROJECT	F.A. PROJECT NO.	DESCRIPTION
14CR.20751.9		

HENDERSON COUNTY



HENDERSON COUNTY

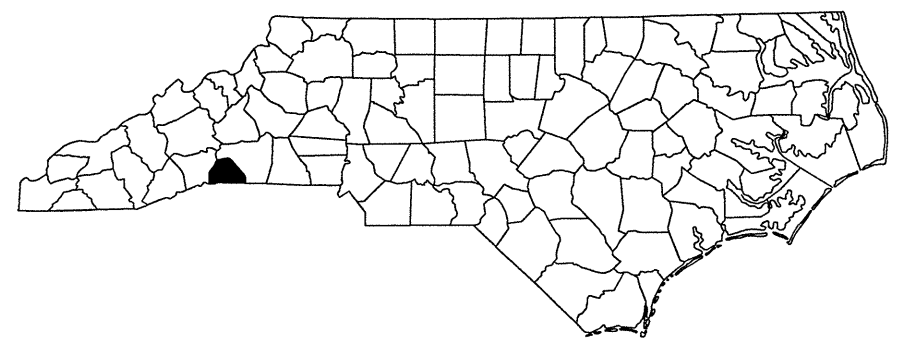
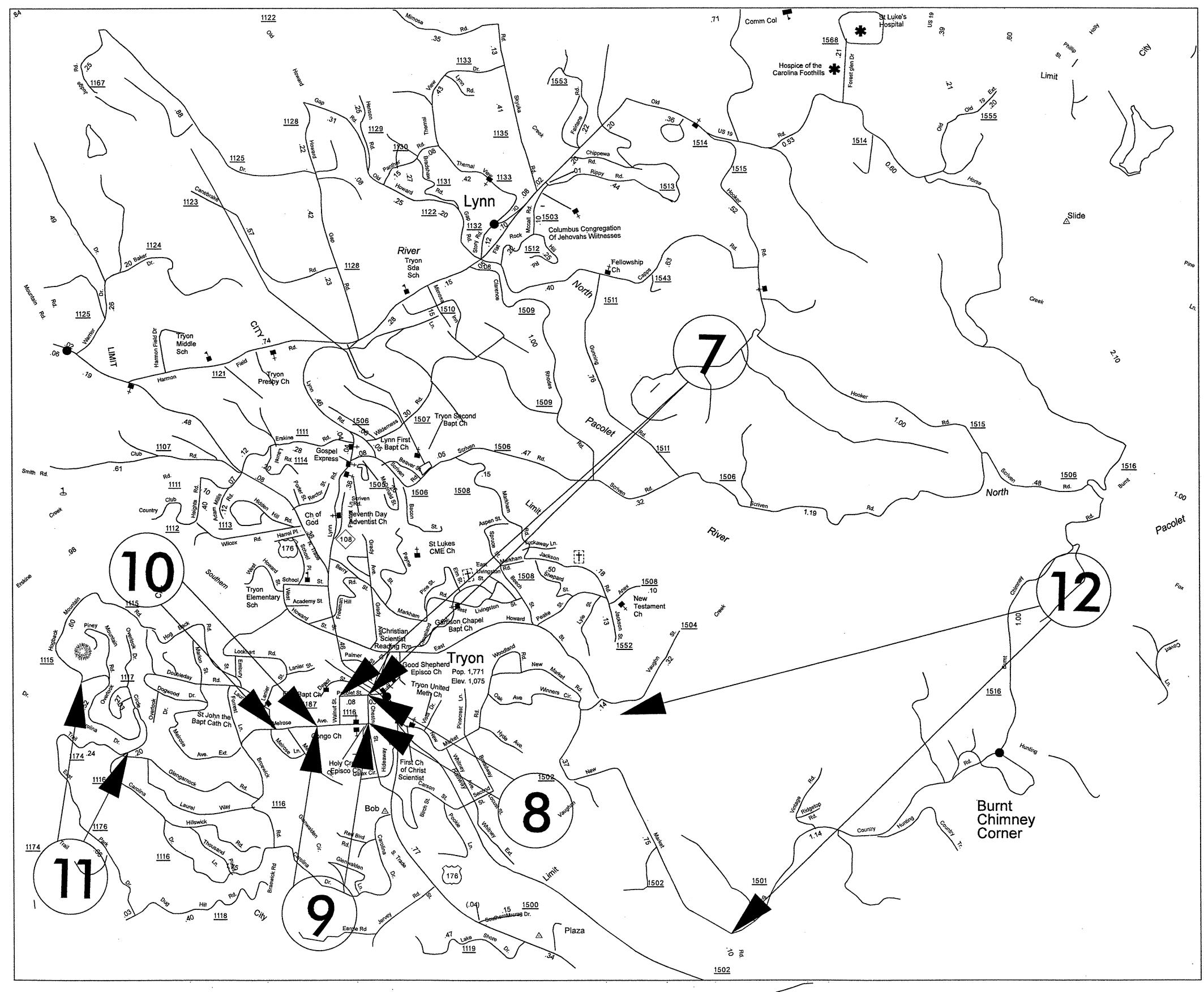
PROJECT REFERENCE NO.		SHEET NO.
14CR.20451.10		4
STATE PROJECT	F.A. PROJECT NO.	DESCRIPTION
14CR.20751.9		



050197

POLK COUNTY

PROJECT REFERENCE NO.		SHEET NO.
14CR.20451.10		5
STATE PROJECT	F.A. PROJECT NO.	DESCRIPTION
14CR.20751.9		



*****SYSTEM*****
 *****DGN*****
 *****USER*****

050197

PROJECT REFERENCE NO.		SHEET NO.
14CR.20451.10		6
STATE PROJECT	F.A. PROJECT NO.	DESCRIPTION
14CR.20751.9		

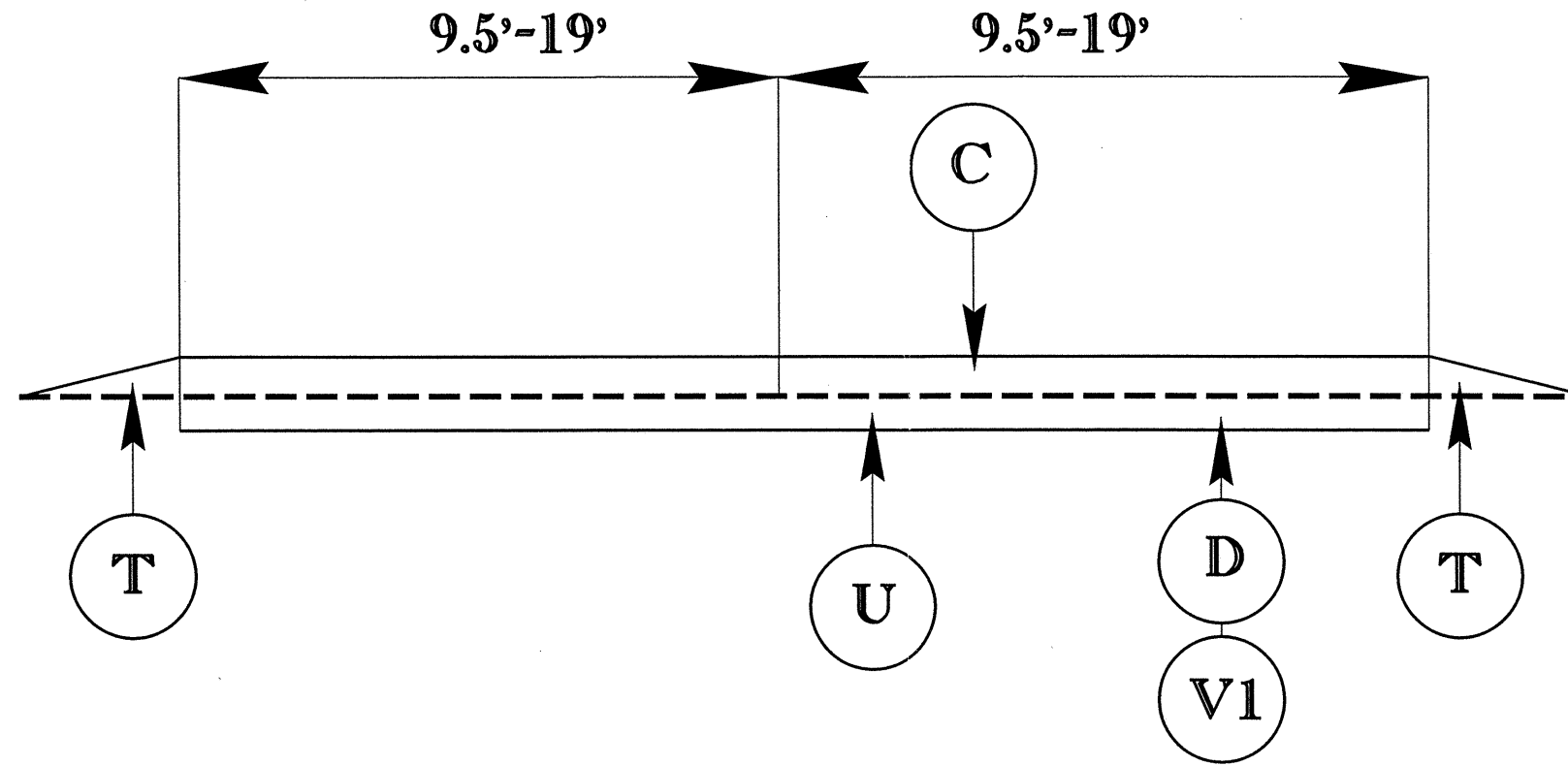
SURFACING SCHEDULE

ITEM NO	DESCRIPTION
C	ASPHALT CONCRETE SURFACE COURSE, TYPE S9.5B AT AN AVERAGE RATE OF 168 LBS. PER SQ. YD. (1 1/2")
D	ASPHALT CONCRETE INTERMED. COURSE, TYPE I19.0B, AT AN AVERAGE RATE OF 342 LBS. PER SQ. YD. (3")
E	ASPHALT CONCRETE BASE CSE., TYPE B25.0B, AT AN AVERAGE RATE OF 456 LBS. PER SQ.YD. IN EACH OF TWO LAYERS (8") (WIDENING - SEE SPECIAL PROVISIONS)
V1	MILLING ASPHALT PAVEMENT 3" IN DEPTH AS DIRECTED BY PROJECT ENGINEER.
V2	MILLING SHOULDER 8" IN DEPTH X 1' WIDE AS DIRECTED BY PROJECT ENGINEER.
T	SHOULDER RECONSTRUCTION WITH ABCM AS DIRECTED BY PROJECT ENGINEER - SEE SPECIAL PROVISIONS
U	EXISTING PAVEMENT

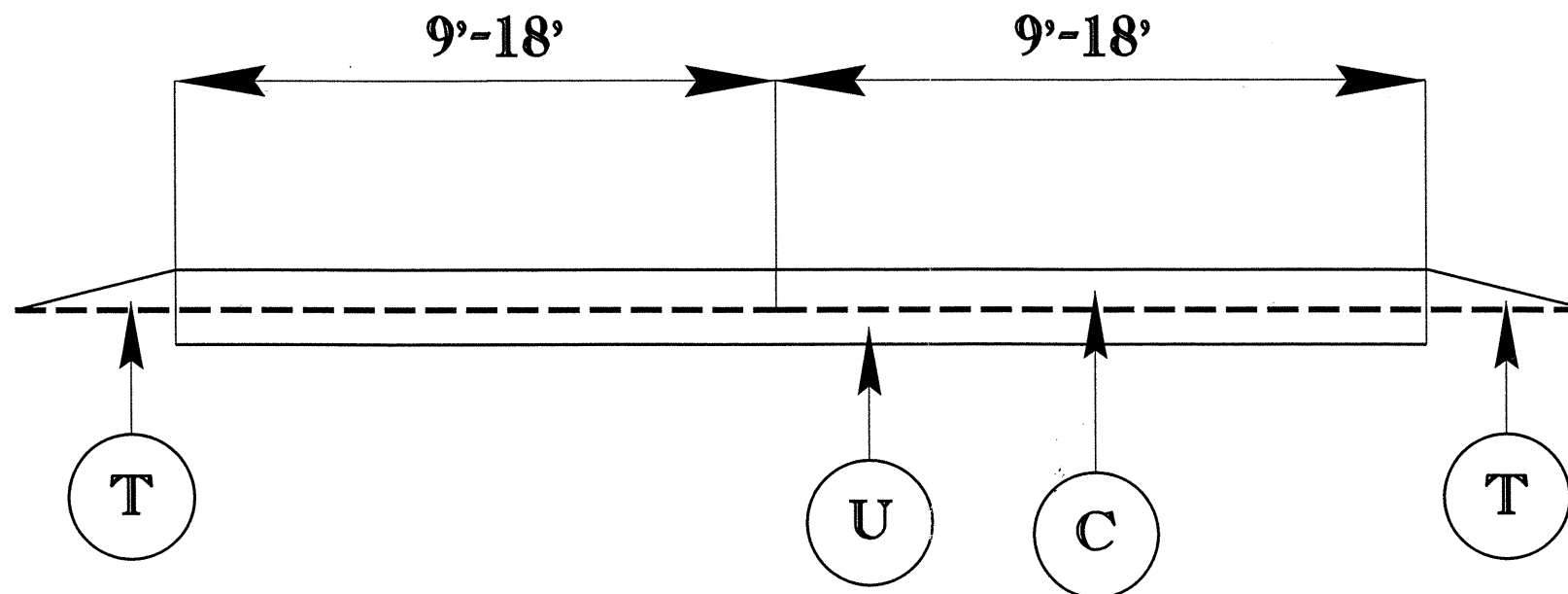
050187

PROJECT REFERENCE NO.		SHEET NO.
14CR.20451.10		7
STATE PROJECT	F.A. PROJECT NO.	DESCRIPTION
14CR.20751.9		

TYPICAL 1



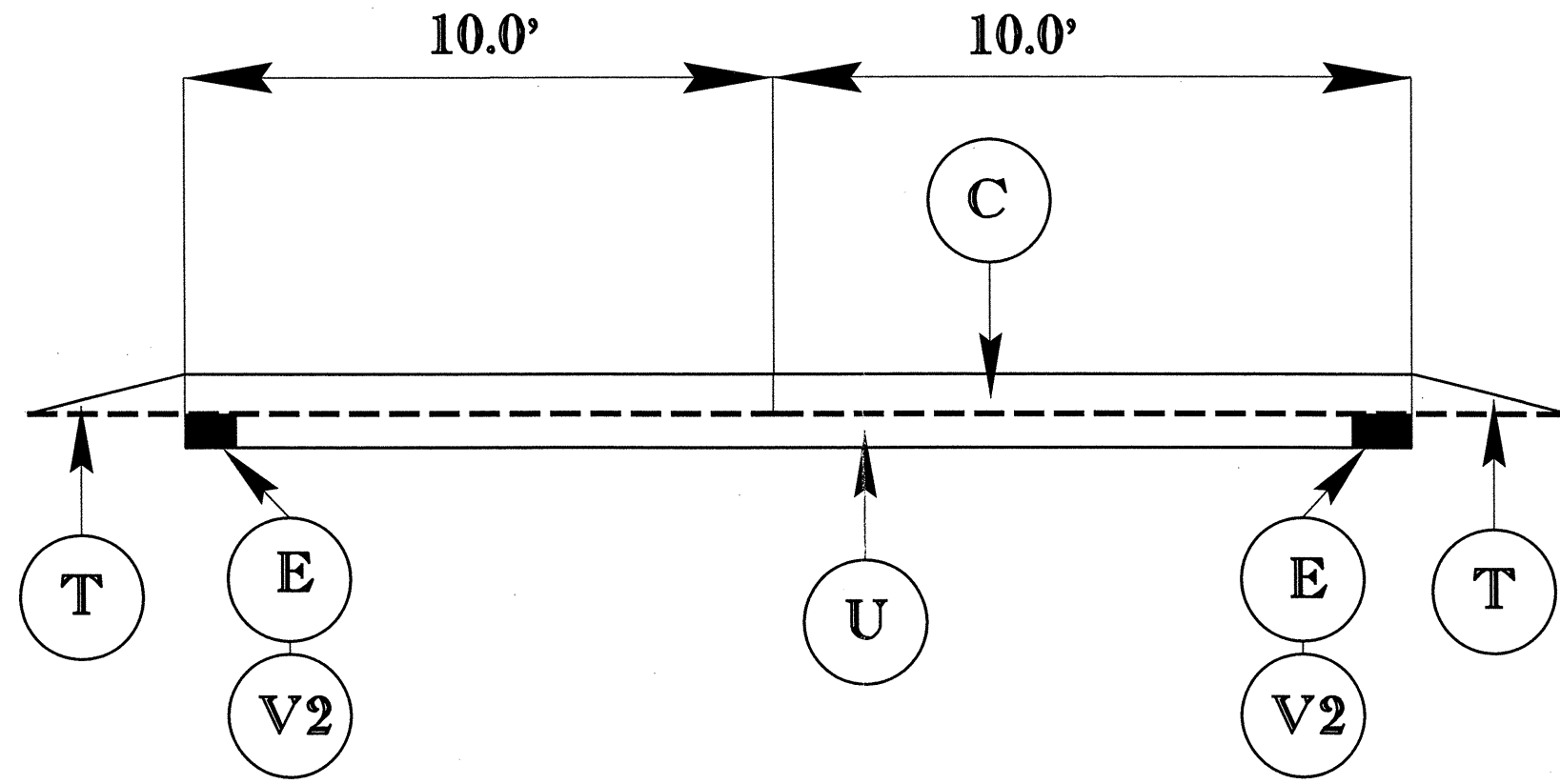
TYPICAL 2



050197

PROJECT REFERENCE NO.		SHEET NO.
14CR.20451.10		8
STATE PROJECT	F.A. PROJECT NO.	DESCRIPTION
14CR.20751.9		

TYPICAL 3



PROJECT NO.	SHEET NO.	TOTAL NO.
14CR.20451.10, 14CR.20751.9	9	

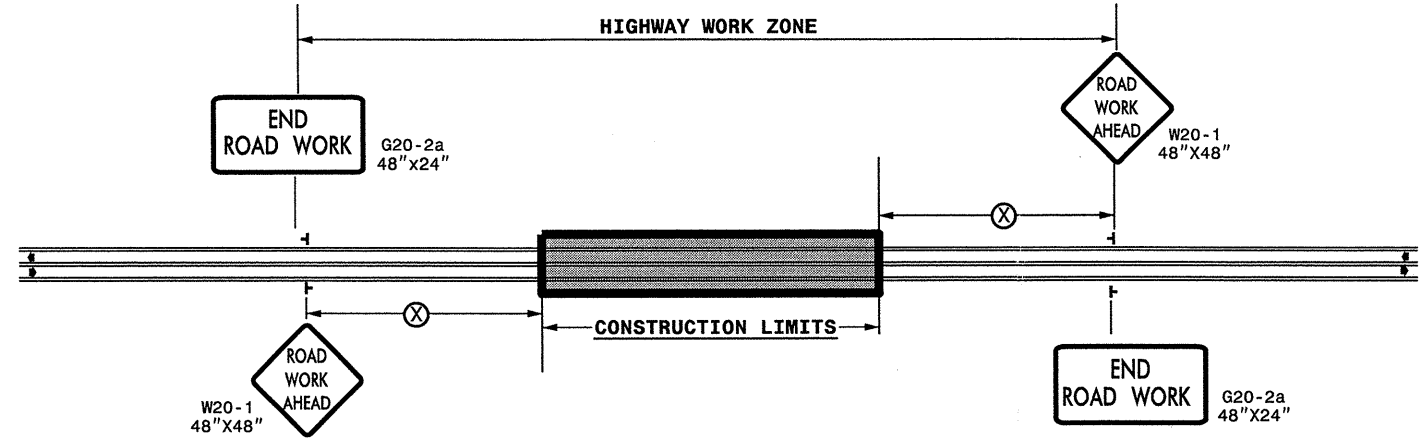
SUMMARY OF QUANTITIES

PROJECT NO	COUNTY	MAP NO	ROUTE	DESCRIPTION	TYP NO	LENGTH MI	WIDTH FT	INCIDENTAL STONE BASE TONS	SHOULDER RECONSTRUCTION SMI	8" MILLING SY	3" MILLING SY	BASE COURSE, B25.0B TONS	INTERMEDIATE COURSE, I19.0B TONS	SURFACE COURSE, S9.5B TONS	PG 64-22 PLANT MIX TONS	ADJ. OF MANHOLES EA	ADJ. OF METER OR VALVE BOX EA
14CR.20451.10	Henderson	1	SR-1314	FROM SR 1331 TO US 64	2	1.56	20	15	3.12					1,639	98		
		2	SR-1331	FROM NC-191 TO SR-1314	2	2.04	18		4.08					1,931	116		2
		3	SR-1426	FROM NC-280 TO NC-191	2	1.91	18		3.82					1,808	108	1	1
		4	SR-1519	FROM US 64 TO EOS	2	0.22	36		0.44					415	25	1	
		5	SR-1602	FROM US64 TO SR-1591	2	3.04	16		6.08					2,560	154		
		6	SR-1696	FROM SR-1551 TO SR-1553	3	0.6	18		1.2	704			321	568	164	2	
TOTAL FOR PROJ NO. 14CR.20451.10						9.37		15	18.74	704		321		8,921	665	4	3
14CR.20751.9	Polk	7	SR-1187	R/R US 76 TO TRYON CITY LIMITS FROM SR-1187 TO MELROSE AVE.	1	0.1	38.5		0.2		825		141	201	19	2	3
		8	SR-1116	FROM CHESTNUT ST. TO MELROSE ST.	1	0.15	32		0.05		1232		210	250	25		
		9	SR-1116	FROM MELROSE CIRCLE TO LAUREL AVE	1	0.1	19		0.2		825		141	100	13	1	
		10	SR-1116	FROM CAROLINA DR. TO SR-1174	2	0.7	17	15	1.4					626	38		
		11	SR-1116	FROM SR-1501 TO SR-1504	2	1	18		2					946	57		
		12	SR-1502														
TOTAL FOR PROJ NO. 14CR.20751.9						2.15		15	4.05	0	3707	0	633	2,236	165	4	3
GRAND TOTAL						11.52		30	22.79	704	3707	321	633	11,157	830	8	6

THERMOPLASTIC AND PAINT QUANTITIES

PROJECT NO	COUNTY	MAP NO	ROUTE	DESCRIPTION	4810000000-E		4830000000-E	4835000000-E	4840000000-N		4845000000-N			
					4" YELLOW PAINT LF	4" WHITE PAINT LF	16" WHITE PAINT LF	24" WHITE PAINT LF	PAINT MSG SCHOOL EA	PAINT MSG RXR EA	PAINT RT ARROW EA	PAINT STR & LT ARROW EA	PAINT STR ARROW EA	PAINT LT ARROW EA
14CR.20451.10	Henderson	1	SR-1314	FROM SR 1331 TO US 64	16,474	16,474								
		2	SR-1331	FROM NC-191 TO SR-1314	26,928	43,901	100	150	12	4	1	1		
		3	SR-1426	FROM NC-280 TO NC-191	25,212	41,103							2	
		4	SR-1519	FROM US 64 TO EOS	2,904	4,734		1,200			2	3		10
		5	SR-1602	FROM US64 TO SR-1591	40,128	65,421								
		6	SR-1696	FROM SR-1551 TO SR-1553	7,920	12,912								
TOTAL FOR PROJ NO. 14CR.20451.10					119,566	184,545	100	1,350	12	4	3	4	2	10
					304,111				16		19			
14CR.20751.9	Polk	7	SR-1187	R/R US 76 TO TRYON CITY LIMITS FROM SR-1187 TO MELROSE AVE.	5,280									
		8	SR-1116	FROM CHESTNUT ST. TO MELROSE ST.	1,320									
		9	SR-1116	FROM MELROSE CIRCLE TO LAUREL AVE	1,320									
		10	SR-1116	FROM CAROLINA DR. TO SR-1174	9,240	15,064								
		11	SR-1116	FROM SR-1501 TO SR-1504	13,200	21,520								
		12	SR-1502											
TOTAL FOR PROJ NO. 14CR.20751.9					32,340	36,584								
					68,924									
GRAND TOTAL					151,906	221,129	100	1,350	12	4	3	4	2	10
					373,035				16		19			

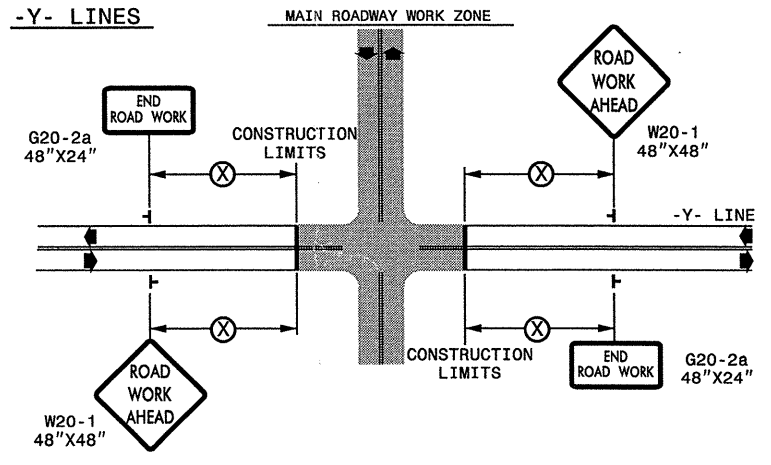
TWO-WAY UNDIVIDED ** (L-LINES)



POSTED SPEED LIMIT (M.P.H.)	RECOMMENDED MINIMUM SIGN SPACING
≤ 50	500'
≥ 55	1000'

STATE OF NORTH CAROLINA
DEPT. OF TRANSPORTATION
DIVISION OF HIGHWAYS
RALEIGH, N.C.

ROADWAYS INTERSECTING ALONG 2 WAY UNDIVIDED WORK ZONE (Y-LINES)



GENERAL NOTES

- USE FLUORESCENT ORANGE SHEETING (TYPE VII OR HIGHER) ON ALL ADVANCED WORK ZONE SIGNS.
- DO NOT INSTALL ADVANCE WARNING SIGNS MORE THAN 3 DAYS PRIOR TO BEGINNING OF WORK.
- SIGNS SHOWN ARE REQUIRED FOR WORK ZONES THAT WILL REMAIN IN EFFECT OVERNIGHT. FOR SHORT-TERM DAILY MAINTENANCE TYPE OPERATIONS, THIS SIGNING APPLICATION IS OPTIONAL; MAY USE ONLY APPLICABLE ROADWAY STANDARD DRAWINGS INSTEAD. HOWEVER, IF THIS SIGNING APPLICATION IS USED, SIGNS MAY BE PORTABLE MOUNTED.
- ALL SIGN SPACING DIMENSIONS ARE APPROXIMATE, FIELD ADJUST AS NECESSARY OR AS DIRECTED.
- USE 3LB STEEL U-CHANNEL POST OR 4" X 4" WOOD POST FOR ALL WORK ZONE SIGNS. 3LB STEEL U-CHANNEL POSTS MUST MEET THE REQUIREMENTS OF STANDARD SPECIFICATION SECTION 1094-1(B), MAY BE GALVANIZED STEEL, OR MAY BE PAINTED GREEN BY THE POST MANUFACTURER. SQUARE STEEL TUBING POSTS HAVING EQUIVALENT STRENGTH OF THE 3 LB STEEL U-CHANNEL POST ARE ALSO ACCEPTABLE FOR USE. ERECT SIGNS PER ROADWAY STANDARD DRAWING 1110.01. PAYMENT FOR WOOD POSTS, 3LB STEEL U-CHANNEL AND SQUARE STEEL TUBING POSTS WITH SIGNS WILL BE MADE ACCORDING TO STANDARD SPECIFICATION "WORK ZONE SIGNS" SECTION 1110.
- WHEN NECESSARY, USE SPLICING IN ACCORDANCE WITH ROADWAY STANDARD DRAWING NO. 1110.01. REMOVE ENTIRE POST WHEN REMOVING SIGNS WITH SPLICED POSTS.
- DO NOT BACK BRACE SIGN SUPPORTS.
- ** TWO-WAY UNDIVIDED ADVANCE WARNING SIGN CONFIGURATION MAY BE USED ON URBAN MULTI-LANE FACILITIES WHERE CONDITIONS LIMIT THE USE OF DUAL MOUNTED SIGNS AS DETERMINED BY THE ENGINEER.

LEGEND

┆ STATIONARY SIGN

◀ DIRECTION OF TRAFFIC FLOW

DETAIL DRAWING FOR
TWO-WAY UNDIVIDED
WORK ZONE WARNING SIGNS

SHEET 1 OF 1

APPROVED: _____ DATE: _____	DETAIL DRAWING FOR TWO-WAY UNDIVIDED AND URBAN FREEWAYS ADVANCED WORK ZONE WARNING SIGNS		REVISIONS	
SEAL			SCALE: NONE	7-98
			10-98	03/04
			01/01	11/04
			CADD FILE	

22-DEC-2010 11:21 AM C:\Users\jngreen\Documents\Share\Resurfacing\2011\Western\2011\Resurfacing\2011\Western\2011\Div14\202709A-B_14CR.20451.10 & 202709A-B_14CR.20751.9.dgn