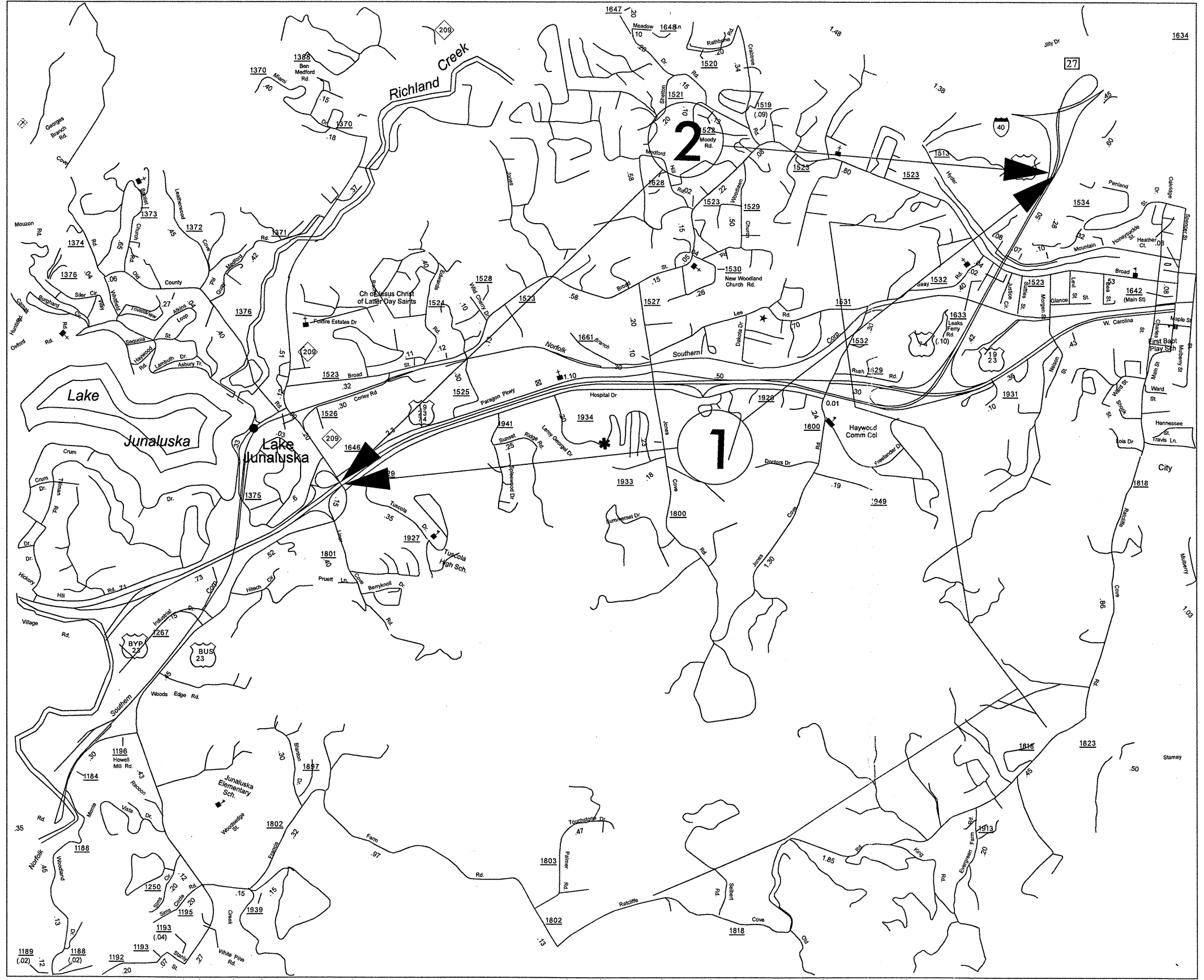


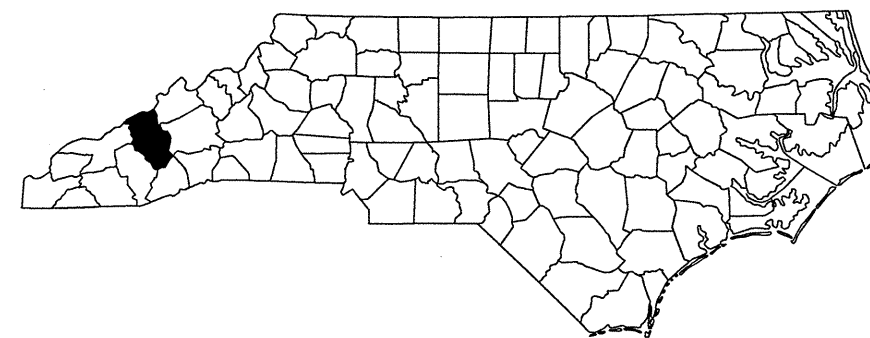
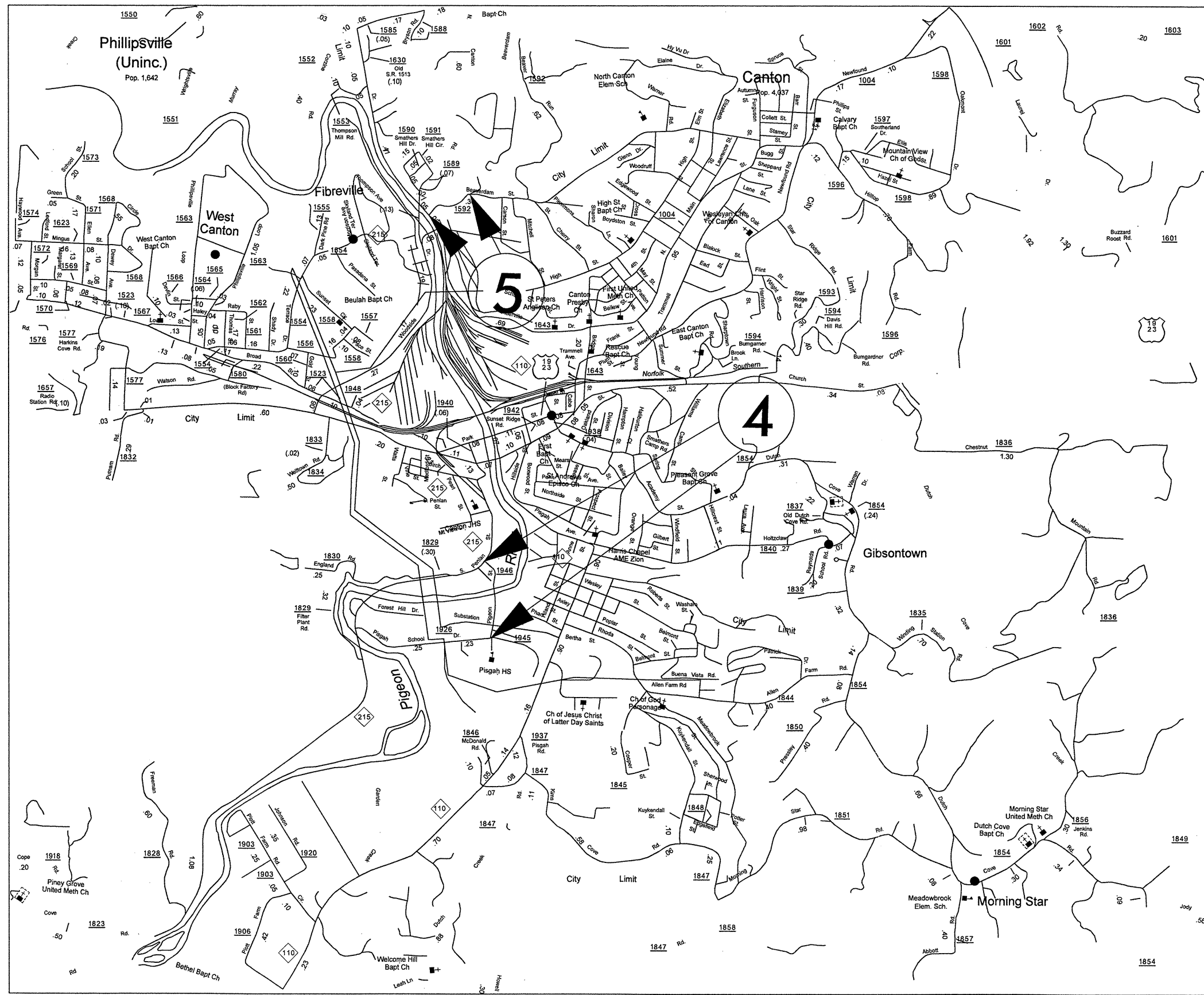
HAYWOOD COUNTY

PROJECT REFERENCE NO.		SHEET NO.
14CR.10441.5		1
STATE PROJECT	F.A. PROJECT NO.	DESCRIPTION
14CR.20881.9		
14CR.20441.7		



HAYWOOD COUNTY

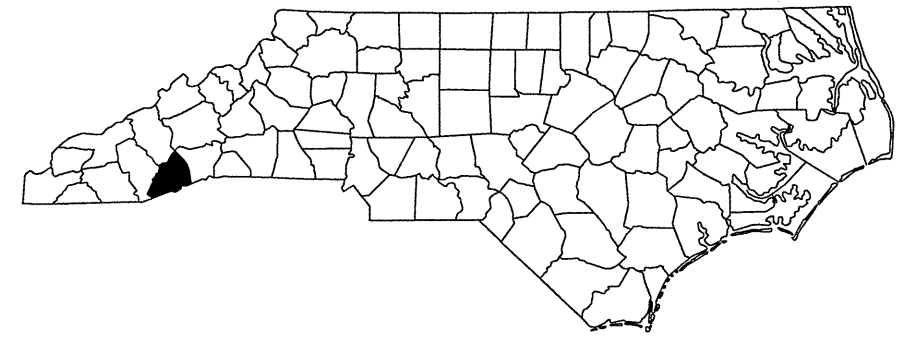
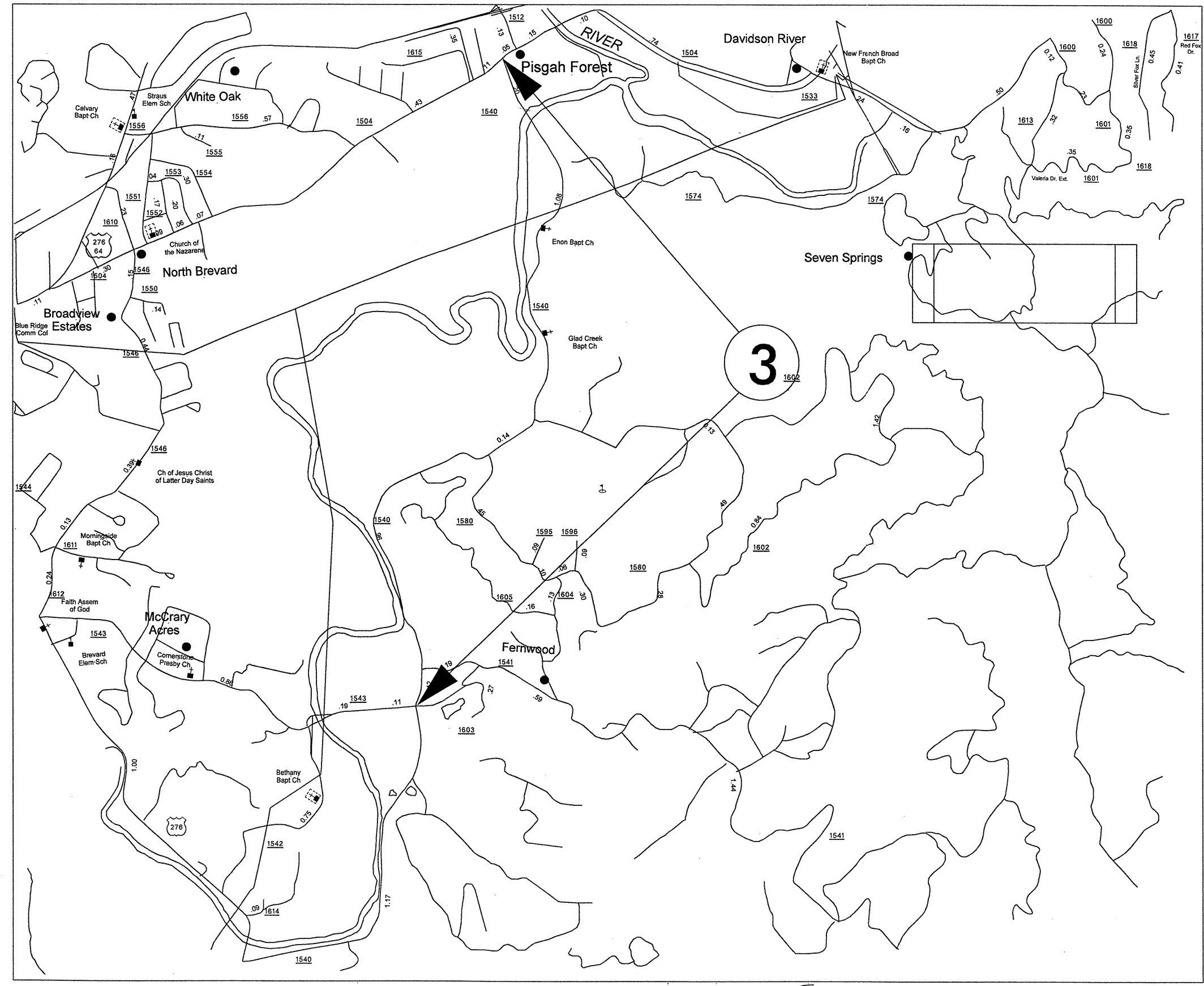
PROJECT REFERENCE NO.		SHEET NO.
14CR.10441.5		2
STATE PROJECT	F.A. PROJECT NO.	DESCRIPTION
14CR.20881.9		
14CR.20441.7		



0501.97

TRANSYLVANIA COUNTY

PROJECT REFERENCE NO.		SHEET NO.
14CR.10441.5		3
STATE PROJECT	F.A. PROJECT NO.	DESCRIPTION
14CR.20881.9		
14CR.20441.7		

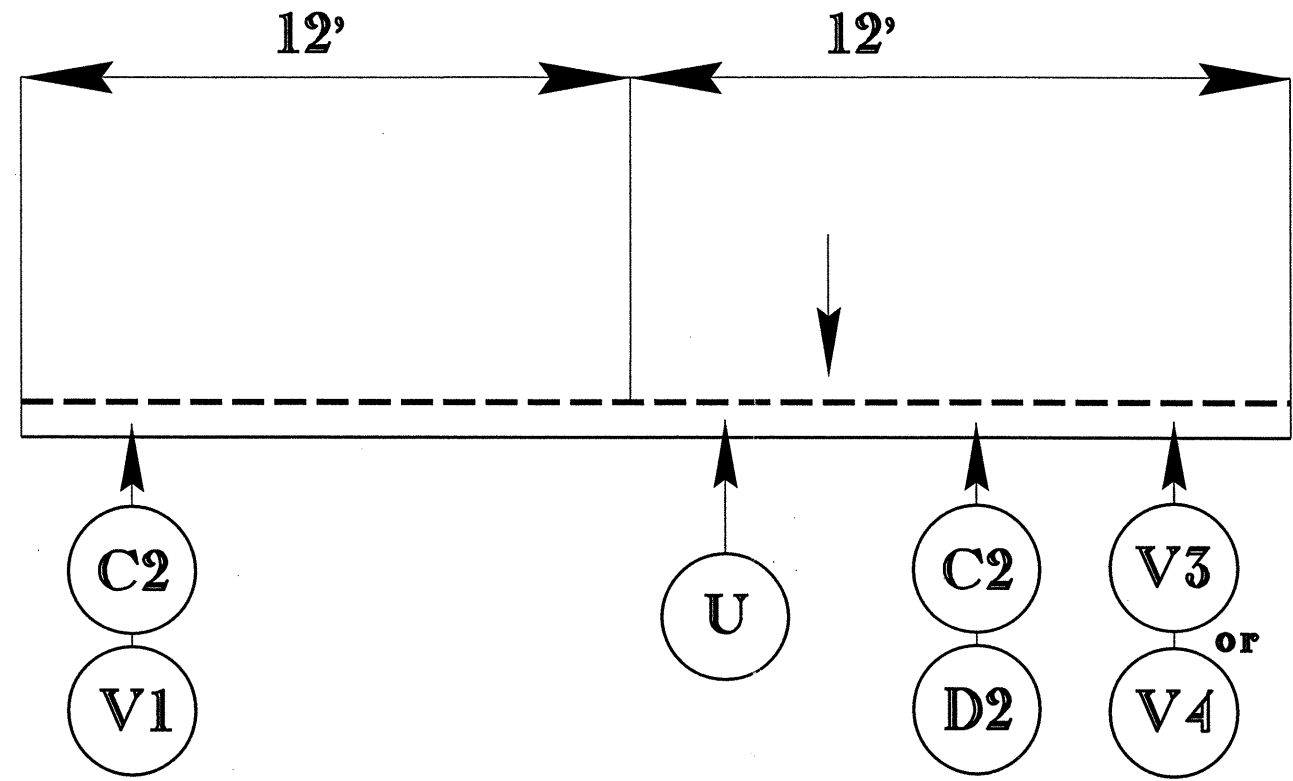


*****SYTIME*****
 *****DGN*****
 *****USER*****

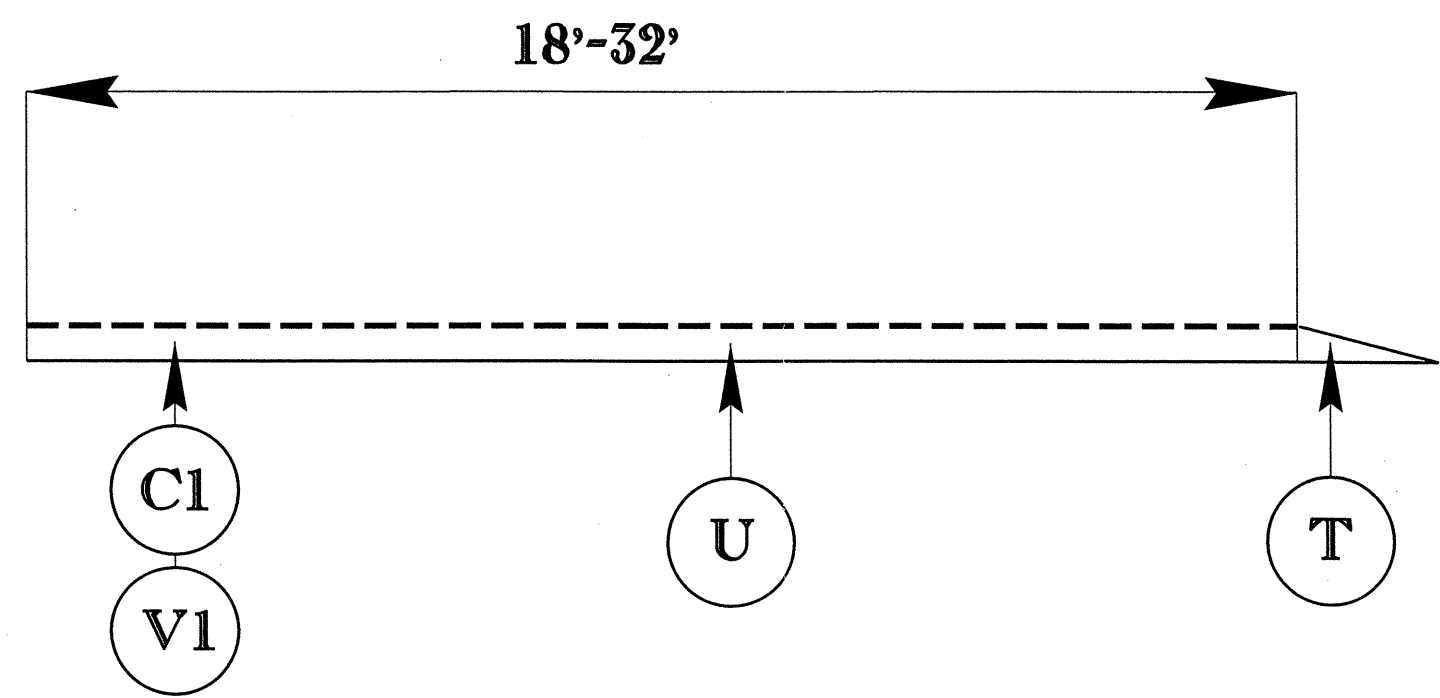
050197

PROJECT REFERENCE NO.		SHEET NO.
14CR.10441.5		6
STATE PROJECT	F.A. PROJECT NO.	DESCRIPTION
14CR.20881.9		
14CR.20441.7		

TYPICAL 1



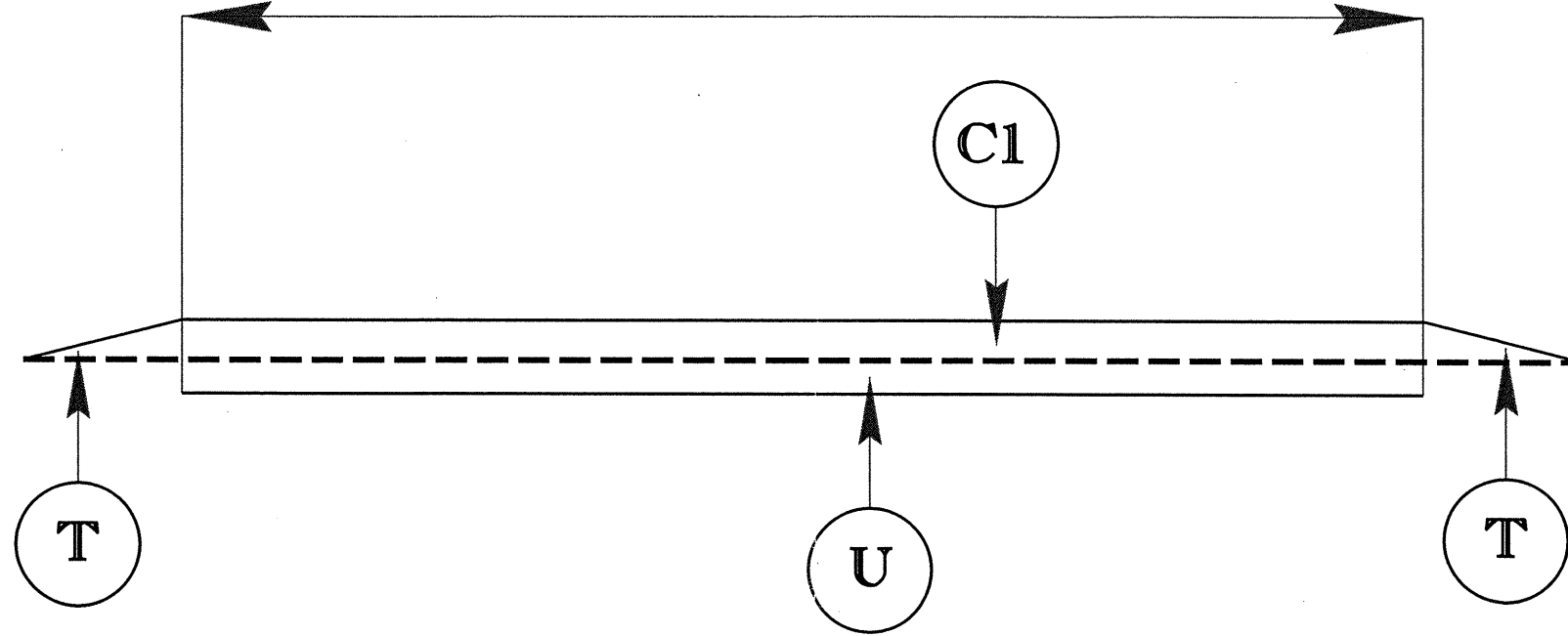
TYPICAL 2



050197

TYPICAL 3

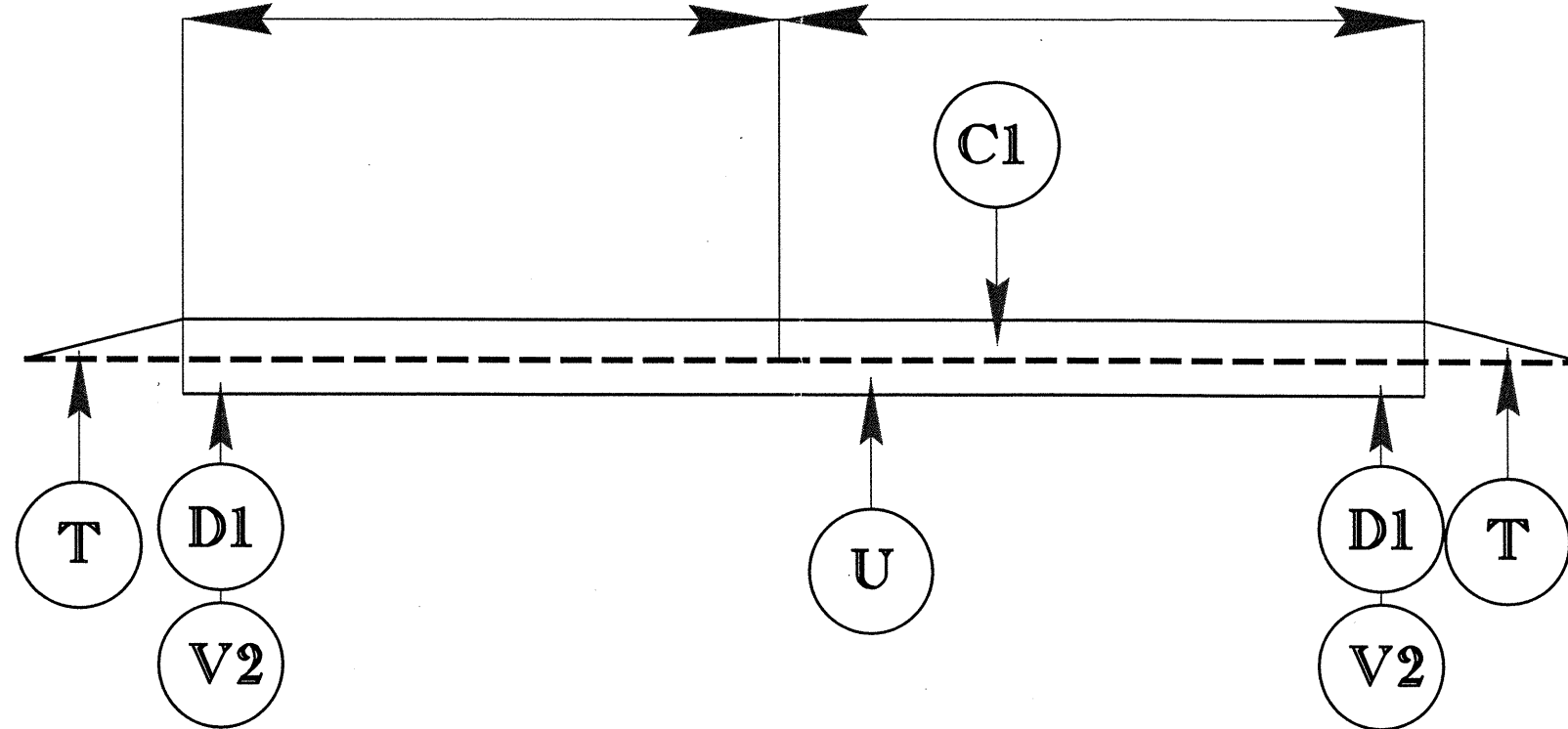
21'-32'



TYPICAL 4

10.0'

10.0'



PROJECT REFERENCE NO.		SHEET NO.
14CR.10441.5		7
STATE PROJECT	F.A. PROJECT NO.	DESCRIPTION
14CR.20881.9		
14CR.20441.7		

PROJECT NO. 14CR.10441.5, 14CR.20881.9 14CR.20441.7	SHEET NO. 8	TOTAL NO.
---	----------------	-----------

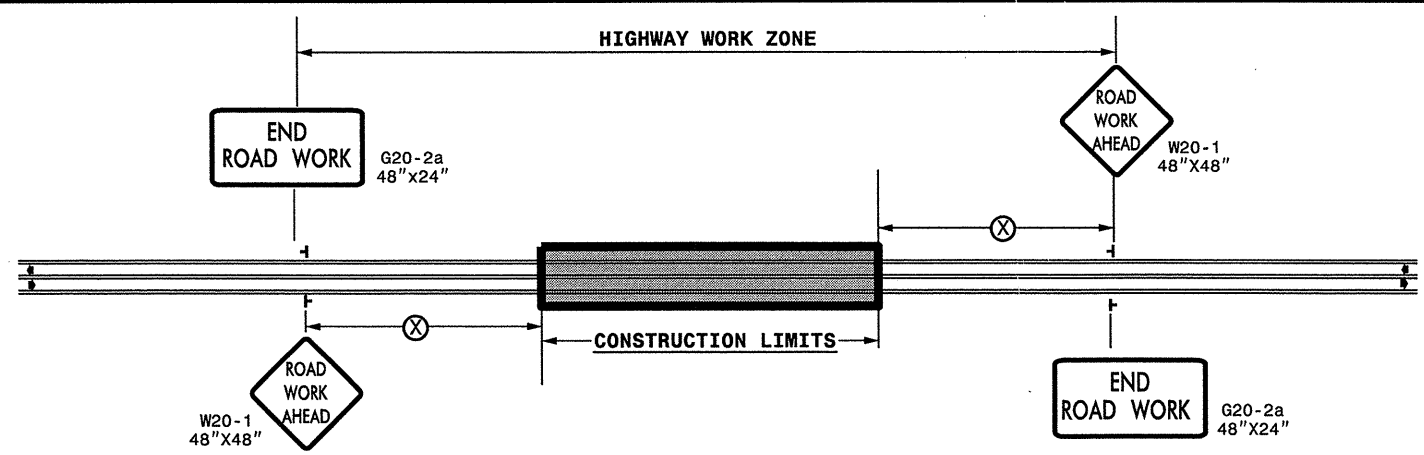
SUMMARY OF QUANTITIES

PROJECT NO	COUNTY	MAP NO	ROUTE	DESCRIPTION	TYP NO	LENGTH MI	WIDTH FT	INCIDENTAL STONE BASE TONS	SHOULDER RECONSTRUCTION SMI	1 1/2" MILLING SY	4 1/2" MILLING SY	6" MILLING SY	3" MILLING SY	INTERMEDIATE COURSE, I19.0B TONS	INTERMEDIATE COURSE, I19.0C TONS	SURFACE COURSE, S9.5B TONS	SURFACE COURSE, S9.5C TONS	PG 64-22 PLANT MIX TONS	PG 70-22 PLANT MIX TONS	ADJ. OF DROP INLET EA	ADJ. OF MANHOLES EA	ADJ. OF METER OR VALVE BOX EA	
14CR.10441.5	Haywood	1	US 74 EAST	FROM NC 209 @ BRIDGE #121 E TO PVT CHG .21 MILES EAST OF BRIDGE 114	1	2.7	24			15,840	27,925	4,575			6,714		514	5,297	316	318			
		"	Exit 105 Ramp	FROM US 74 TO SR-1800	2	0.22	34		0.13	1,173						514		31					
		"	Acc US 74 E Ramp	FROM SR 1800 TO US 74 EAST	3	0.11	28		0.22							167		10					
		"	Exit 106 Ramp	FROM US 74 EAST TO US 23 BUS CLYDE	3	0.27	32		0.54							453		27					
		"	Acc to 74 E Ramp	FROM PVT CHANGE US 23 BUS TO US 74 EAST	3	0.24	32		0.48							403		24					
TOTAL FOR MAP NO. 1						3.54			1.37	17,013	27,925	4,575			6,714	1,537	5,297	408	318				
		2	US 74 WEST	FROM NC 209 @ BRIDGE # 122 EAST TO PVT CHANGE .21 MILES EAST OF BRIDGE 114	1	2.7	24			17,424	27,925	3,520			6,332		5,297	298	318				
		"	Exit SR-1532 Ramp	FROM US 74 W TO JONES COVE RD SR-1532	3	0.26	25		0.43							341		20					
		"	Exit 107 Ramp	FROM US 74 W TO EXIT 107 CLYDE TO PVT CHANGE	3	0.15	21		0.3							165		10					
		"	Acc From 107	FROM SR 1532 TO US 74 WEST	3	0.55	32		0.55							951		57					
		"	Exit SR-1527 Ramp	FROM US 74 WEST TO EXIT SR-1527	3	0.24	32		0.24							418		25					
		"	Exit to NC 209 Ramp	FROM US 74 W TO BRIDGE 122 @ NC 209	2	0.15	18		0.15	1,584						294		18					
TOTAL FOR MAP NO. 2						4.05			1.67	19,008	27,925	3,520			6,332	2,169	5,297	428	318				
TOTAL FOR PROJ NO. 14CR.10441.5						7.59			3.04	36,021	55,850	8,095			13,046	3,706	10,594	836	636				
14CR.20881.9	Transylvania	3	SR-1540	FROM SR-1504 TO SR-1543	4	2.4	20	15	4.8				7,000	1,197		2,520		208					
TOTAL FOR PROJ NO. 14CR.20881.9						2.4		15	4.8				7,000	1,197		2,520		208					
14CR.20441.7	Haywood	4	SR-1946	FROM NC 215 TO SR-1945	4	0.15	27		0.3				2,376	435		213		33		2	2	1	
		5	SR-1592	FROM .06 MILES EAST OF NC215 TO NOTH CANTON CITY LIMITS	4	0.3	18		0.6				3,168	450		284		38		5	8	6	
		6	SR-1164	FROM US 23 BUS TO SR-1168	4	0.55	24	15	1.1				2,700	489		694		65					
TOTAL FOR PROJ NO. 14CR.20441.7						1		15	2				8,244	1,374		1,191		136		7	10	7	
GRAND TOTAL						10.99		30	9.84	36,021	55,850	8,095	15,244	2,571	13,046	7,417	10,594	1,180	636	7	10	7	

THERMOPLASTIC AND PAINT QUANTITIES

PROJECT NO	COUNTY	MAP NO	ROUTE	DESCRIPTION	4685000000-E		4686000000-E		4695000000-E		472500000	4810000000-E		4905000000-N	
					4" X 90 M WHITE THERM LF	4" X 90 M YELLOW THERM LF	4" X 120 M WHITE THERM LF	8" X 90 M WHITE THERM LF	8" X 90 M YELLOW THERM LF	THERMO STR ARROW 90 M EA	4" WHITE PAINT LF	4" YELLOW PAINT LF	SNOWPLOWABLE MARKERS (YELLOW & YELLOW) EA	SNOW PLOWABLE MARKERS (CRYSTAL & EA)	
14CR.10441.5	Haywood	1	US 74 EAST	FROM NC 209 @ BRIDGE #121 E TO PVT CHG .21 MILES EAST OF BRIDGE 114	14,256	14,256	3,564	2,078		9					237
		"	Exit 105 Ramp	FROM US 74 TO SR-1800	1,056	1,056		300							40
		"	Acc US 74 E Ramp	FROM SR 1800 TO US 74 EAST	1,184	998		325		3					40
		"	Exit 106 Ramp	FROM US 74 EAST TO US 23 BUS CLYDE	2,905	1,125		354							40
		"	Acc to 74 E Ramp	FROM PVT CHANGE US 23 BUS TO US 74 EAST	1,267	912		354		3					40
TOTAL FOR MAP NO. 1					20,668	18,347	3,564	3,411		15					397
		2	US 74 WEST	FROM NC 209 @ BRIDGE # 122 EAST TO PVT CHANGE .21 MILES EAST OF BRIDGE 114	14,796	14,256	3,564	2,078							237
		"	Exit SR-1532 Ramp	FROM US 74 W TO JONES COVE RD SR-1532	1,350	990		362							40
		"	Exit 107 Ramp	FROM US 74 W TO EXIT 107 CLYDE TO PVT CHANGE	807	490		310							40
		"	Acc From 107	FROM SR 1532 TO US 74 WEST	5,918		220	340	1,625	3			20	40	
		"	Exit SR-1527 Ramp	FROM US 74 WEST TO EXIT SR-1527	2,582	2,190		350							40
		"	Exit to NC 209 Ramp	FROM US 74 W TO BRIDGE 122 @ NC 209	1,614		280								40
TOTAL FOR MAP NO. 2					27,067	17,926	4,064	3,440	1,625	3			20	397	
TOTAL FOR PROJ NO. 14CR.10441.5					47,735	36,273	7,628	6,851	1,625	18			20	794	
					84,008			8,476					814		
14CR.20881.9	Transylvania	3	SR-1540	FROM SR-1504 TO SR-1543								51,648	31,680		
TOTAL FOR PROJ NO. 14CR.20881.9												51,648	31,680		
												83,328			
14CR.20441.7	Haywood	4	SR-1946	FROM NC 215 TO SR-1945								3,228	1,980		
		5	SR-1592	FROM .06 MILES EAST OF NC215 TO NOTH CANTON CITY LIMITS								6,456	3,960		
		6	SR-1164	FROM US 23 BUS TO SR-1168								11,836	7,260		
TOTAL FOR PROJ NO. 14CR.20441.7												21,520	13,200		
												34,720			
GRAND TOTAL					47,735	36,273	7,628	6,851	1,625	18		73,168	44,880	20	794
					84,008			8,476				118,048		814	

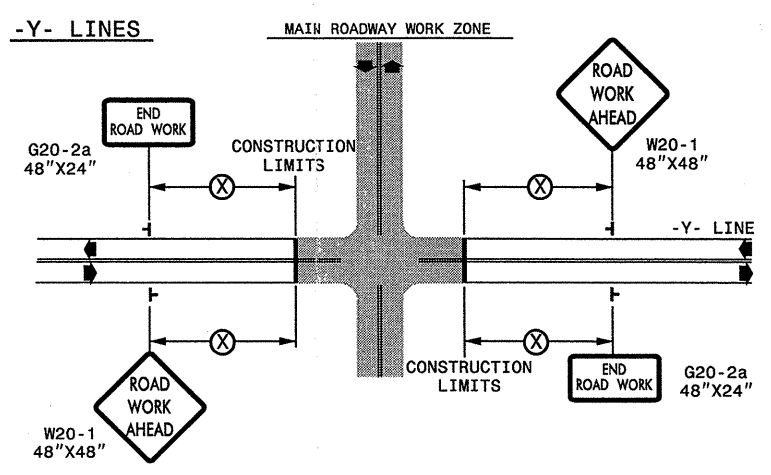
TWO-WAY UNDIVIDED ** (L-LINES)



POSTED SPEED LIMIT (M.P.H.)	RECOMMENDED MINIMUM SIGN SPACING
≤ 50	500'
≥ 55	1000'

STATE OF NORTH CAROLINA
DEPT. OF TRANSPORTATION
DIVISION OF HIGHWAYS
RALEIGH, N.C.

ROADWAYS INTERSECTING ALONG 2 WAY UNDIVIDED WORK ZONE (Y-LINES)



DETAIL DRAWING FOR
TWO-WAY UNDIVIDED
WORK ZONE WARNING SIGNS

GENERAL NOTES

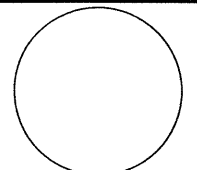
- USE FLUORESCENT ORANGE SHEETING (TYPE VII OR HIGHER) ON ALL ADVANCED WORK ZONE SIGNS.
- DO NOT INSTALL ADVANCE WARNING SIGNS MORE THAN 3 DAYS PRIOR TO BEGINNING OF WORK.
- SIGNS SHOWN ARE REQUIRED FOR WORK ZONES THAT WILL REMAIN IN EFFECT OVERNIGHT. FOR SHORT-TERM DAILY MAINTENANCE TYPE OPERATIONS, THIS SIGNING APPLICATION IS OPTIONAL; MAY USE ONLY APPLICABLE ROADWAY STANDARD DRAWINGS INSTEAD. HOWEVER, IF THIS SIGNING APPLICATION IS USED, SIGNS MAY BE PORTABLE MOUNTED.
- ALL SIGN SPACING DIMENSIONS ARE APPROXIMATE, FIELD ADJUST AS NECESSARY OR AS DIRECTED.
- USE 3LB STEEL U-CHANNEL POST OR 4" X 4" WOOD POST FOR ALL WORK ZONE SIGNS. 3LB STEEL U-CHANNEL POSTS MUST MEET THE REQUIREMENTS OF STANDARD SPECIFICATION SECTION 1094-1(B), MAY BE GALVANIZED STEEL, OR MAY BE PAINTED GREEN BY THE POST MANUFACTURER. SQUARE STEEL TUBING POSTS HAVING EQUIVALENT STRENGTH OF THE 3 LB STEEL U-CHANNEL POST ARE ALSO ACCEPTABLE FOR USE. ERECT SIGNS PER ROADWAY STANDARD DRAWING 1110.01. PAYMENT FOR WOOD POSTS, 3LB STEEL U-CHANNEL AND SQUARE STEEL TUBING POSTS WITH SIGNS WILL BE MADE ACCORDING TO STANDARD SPECIFICATION "WORK ZONE SIGNS" SECTION 1110.
- WHEN NECESSARY, USE SPLICING IN ACCORDANCE WITH ROADWAY STANDARD DRAWING NO. 1110.01. REMOVE ENTIRE POST WHEN REMOVING SIGNS WITH SPLICED POSTS.
- DO NOT BACK BRACE SIGN SUPPORTS.
- ** TWO-WAY UNDIVIDED ADVANCE WARNING SIGN CONFIGURATION MAY BE USED ON URBAN MULTI-LANE FACILITIES WHERE CONDITIONS LIMIT THE USE OF DUAL MOUNTED SIGNS AS DETERMINED BY THE ENGINEER.

LEGEND

┆ STATIONARY SIGN

◀ DIRECTION OF TRAFFIC FLOW

SHEET 1 OF 1

APPROVED: _____ DATE: _____	DETAIL DRAWING FOR TWO-WAY UNDIVIDED AND URBAN FREEWAYS ADVANCED WORK ZONE WARNING SIGNS						
SEAL 							
SCALE: NONE DATE: _____ DWG. BY: _____ DESIGN BY: _____ REVIEWED BY: _____	REVISIONS <table border="1"> <tr> <td>7-98</td> <td>10/01</td> </tr> <tr> <td>10-98</td> <td>03/04</td> </tr> <tr> <td>01/01</td> <td>11/04</td> </tr> </table>	7-98	10/01	10-98	03/04	01/01	11/04
7-98	10/01						
10-98	03/04						
01/01	11/04						



22-DEC-2000 10:53
 \\XD01\DFSR001\groups\wztc\cc\m&s\Division\Share\Resurfacing\2011\Western\2011\Div\4\5\3\2way_undiv.&Urban_Frways_stationary.dgn
 sngreen AT 12/24/23