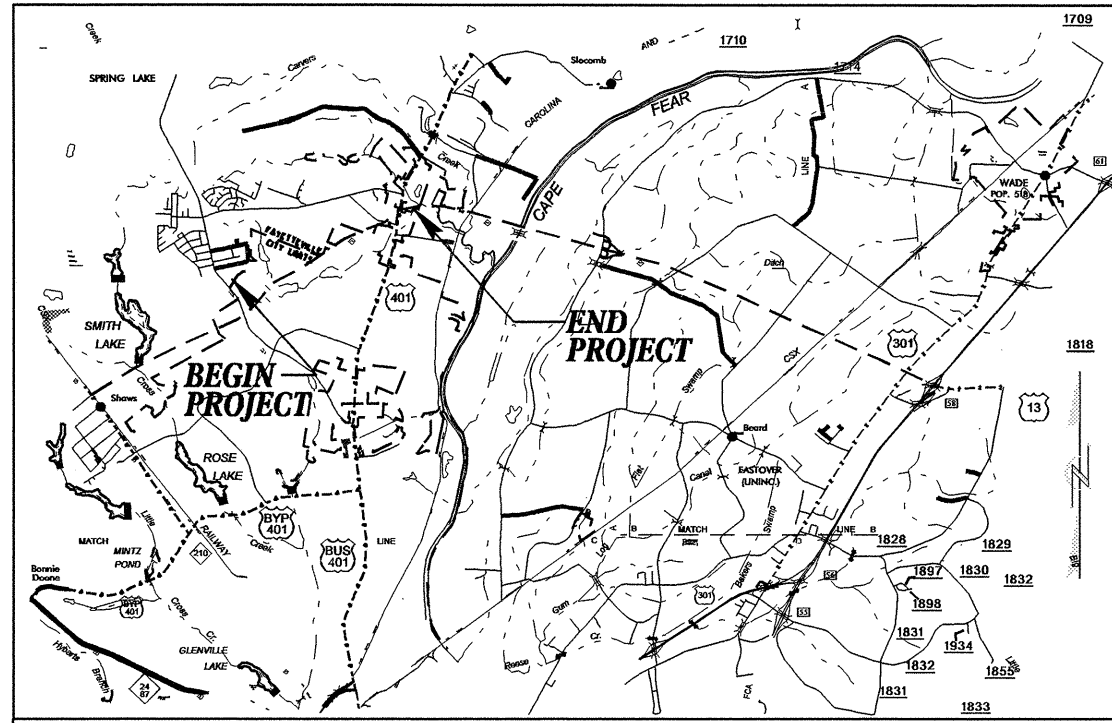


9/09/99



VICINITY MAP

STATE OF NORTH CAROLINA  
DIVISION OF HIGHWAYS

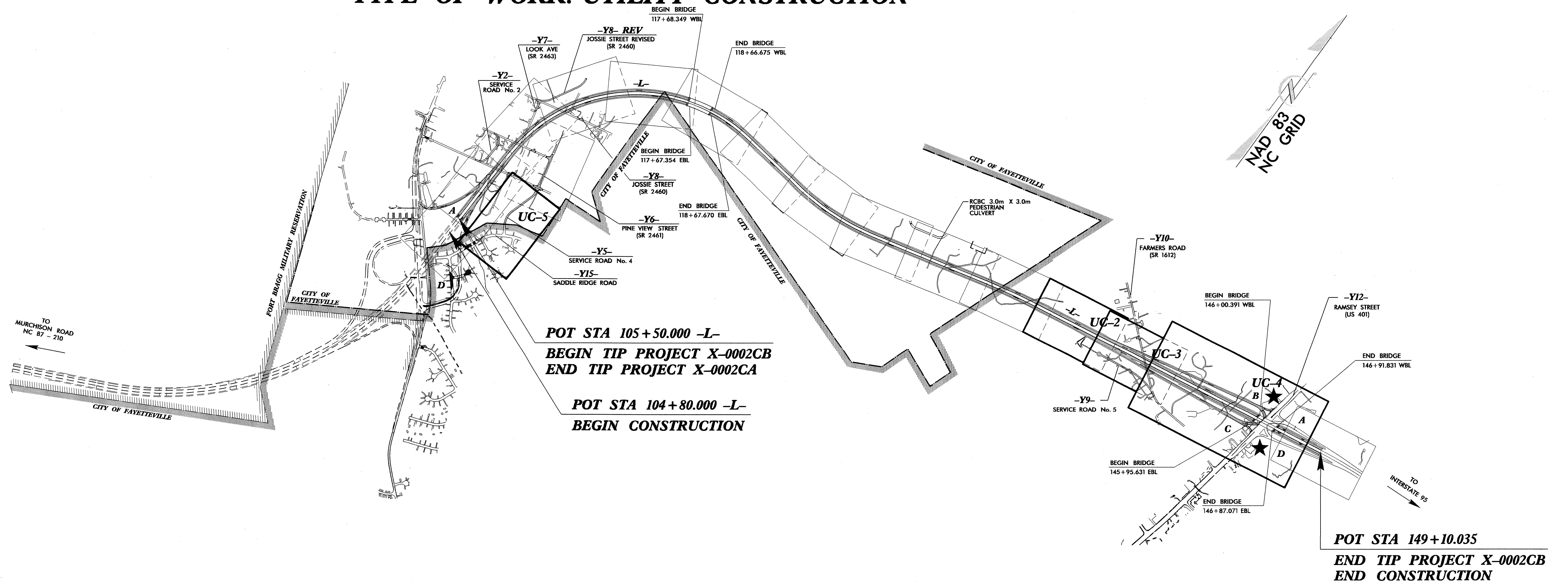
UTILITY CONSTRUCTION PLANS  
CUMBERLAND COUNTY

LOCATION: NC 24 EXTENSION (FAYETTEVILLE OUTER LOOP)  
FROM EAST OF SR 1600 (MCARTHUR RD.)  
TO WEST OF US 401 (RAMSEY ST.)  
TYPE OF WORK: UTILITY CONSTRUCTION

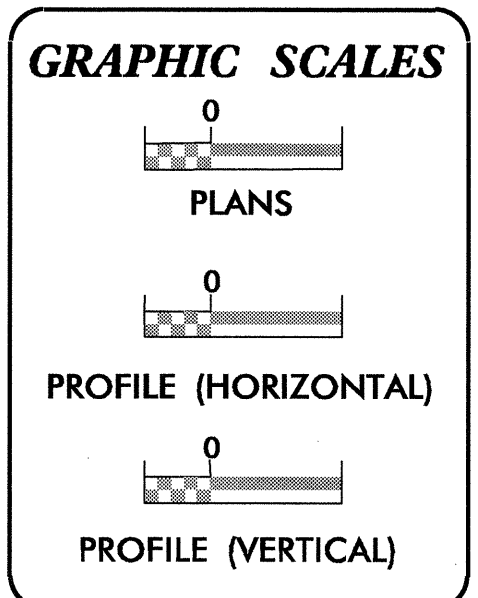
**METRIC**  
ALL DIMENSIONS IN  
THESE PLANS ARE IN METERS  
AND/OR MILLIMETERS  
UNLESS OTHERWISE SHOWN

T.I.P. NO.	SHEET NO.
X-0002CB	UC-1

PROJECT: X-0002CB



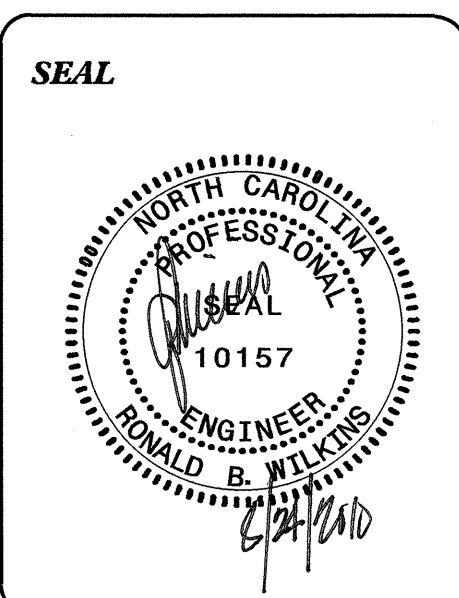
IF AUG-2010 11:34  
R:\Utilities\Projects\X-0002CB-Ut\_Titles\UC1.psh.dgn  
at 11/12/2009



INDEX OF SHEETS	
SHEET NO.	DESCRIPTION
UC-1	TITLE SHEET
UC-2 THRU UC-5	UTILITY CONSTRUCTION PLAN SHEETS
UC-6	DETAILS SHEET

**WATER AND SEWER OWNERS ON PROJECT**

(1) WATER - FAYETTEVILLE PWC  
(2) SANITARY SEWER - FAYETTEVILLE PWC



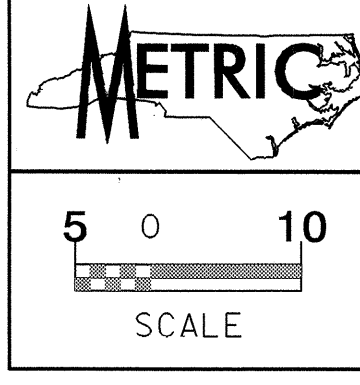
PREPARED IN THE OFFICE OF:  
**DIVISION OF HIGHWAYS  
UTILITIES ENGINEERING  
SECTION**

1591 MAIL SERVICES CENTER  
RALEIGH, NC 27699-1591  
PHONE (919) 250-4128  
FAX (919) 250-4119

**Roger Worthington, P.E.** UTILITIES SECTION ENGINEER  
**R. B. WILKINS, P.E.** UTILITIES SQUAD LEADER PROJECT ENGINEER  
**MICHAEL R. BRIGHT** UTILITIES PROJECT DESIGNER

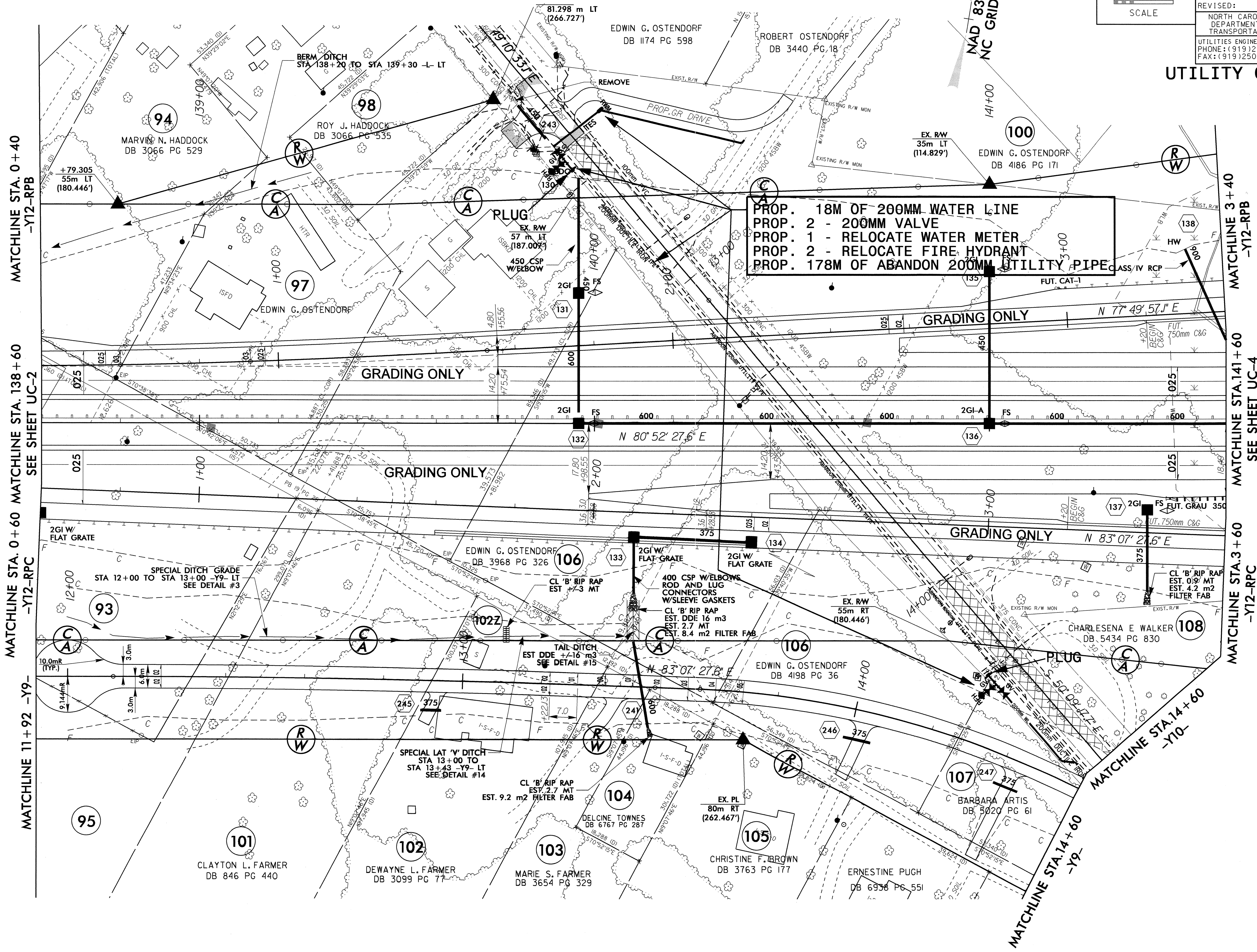






PROJECT REFERENCE NO.	X-0002CB	SHEET NO.	UC-3
DESIGNED BY:	MRB		
DRAWN BY:	MRB		
CHECKED BY:	RBW		
APPROVED BY:	RBW		
REVISED:			
NORTH CAROLINA DEPARTMENT OF TRANSPORTATION		UTILITY CONSTRUCTION PLANS ONLY	
UTILITIES ENGINEERING SEC. PHONE: (919) 250-4128 FAX: (919) 250-4119			

**UTILITY CONSTRUCTION**



PROP. 18M OF 200MM WATER LINE  
 PROP. 2 - 200MM VALVE  
 PROP. 1 - RELOCATE WATER METER  
 PROP. 2 - RELOCATE FIRE HYDRANT  
 PROP. 178M OF ABANDON 200MM UTILITY PIPE

MATCHLINE STA. 0+40  
-Y12-RPB

MATCHLINE STA. 138+60  
SEE SHEET UC-2

MATCHLINE STA. 0+60  
-Y12-RPC

MATCHLINE 11+92  
-Y9-

MATCHLINE 3+40  
-Y12-RPB

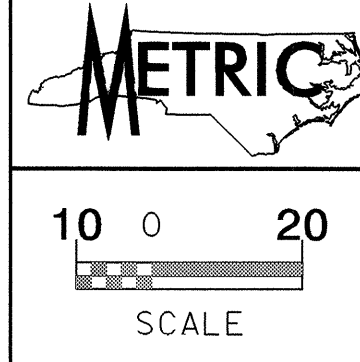
MATCHLINE STA. 141+60  
SEE SHEET UC-4

MATCHLINE STA. 3+60  
-Y12-RPC

MATCHLINE STA. 14+60  
-Y10-

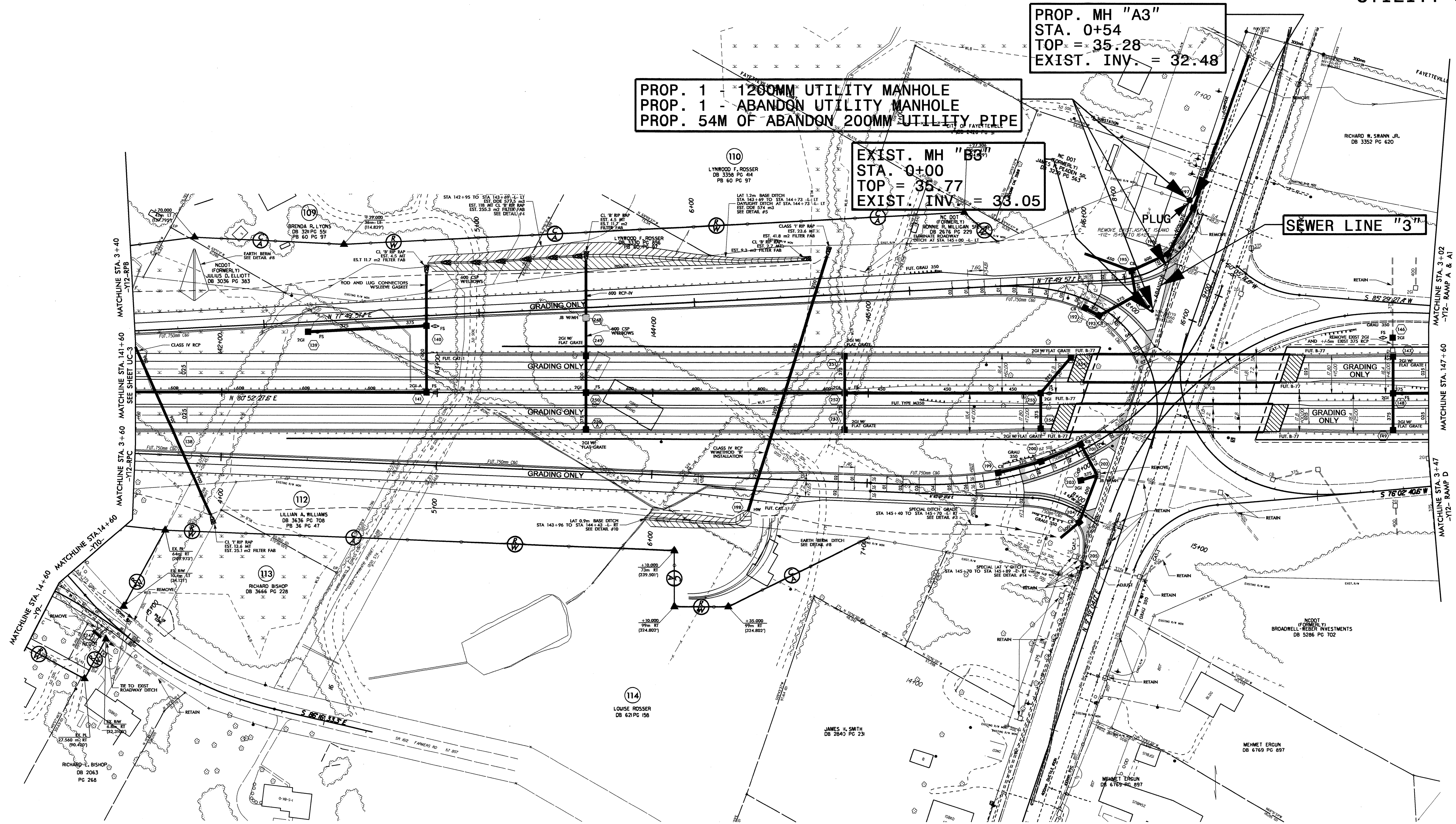
11/15/2008 11:00  
 R:\Utilities\Projects\X-0002CB\11-16\_UC3\_pch.dgn  
 mr-rah AT 10/25/2008





PROJECT REFERENCE NO.	X-0002CB	SHEET NO.	UC-4
DESIGNED BY:	MRB		
DRAWN BY:	MRB		
CHECKED BY:	RBW		
APPROVED BY:	RBW		
REVISED:		NORTH CAROLINA DEPARTMENT OF TRANSPORTATION	
UTILITIES ENGINEERING SEC. PHONE: (919)250-4128 FAX: (919)250-4119		UTILITY CONSTRUCTION PLANS ONLY	

**UTILITY CONSTRUCTION**



PROP. 1 - 1200MM UTILITY MANHOLE  
 PROP. 1 - ABANDON UTILITY MANHOLE  
 PROP. 54M OF ABANDON 200MM UTILITY PIPE

PROP. MH "A3"  
 STA. 0+54  
 TOP = 35.28  
 EXIST. INV. = 32.48


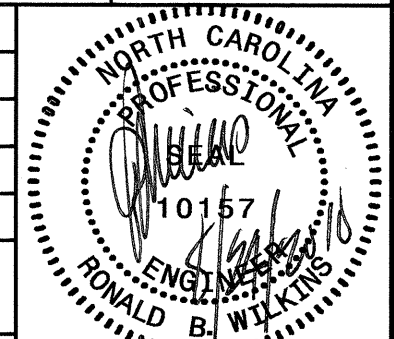
EXIST. MH "B3"  
 STA. 0+00  
 TOP = 35.77  
 EXIST. INV. = 33.05

SEWER LINE "3"

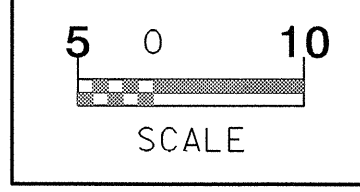
NAD 83  
 NC GRID

11 AUG 2006 11:03  
 R:\Users\p2002\p2002\Projects\X-0002CB\Ut-17\_UC-4\_psh.dgn  
 10/25/06 10:52:30 AM

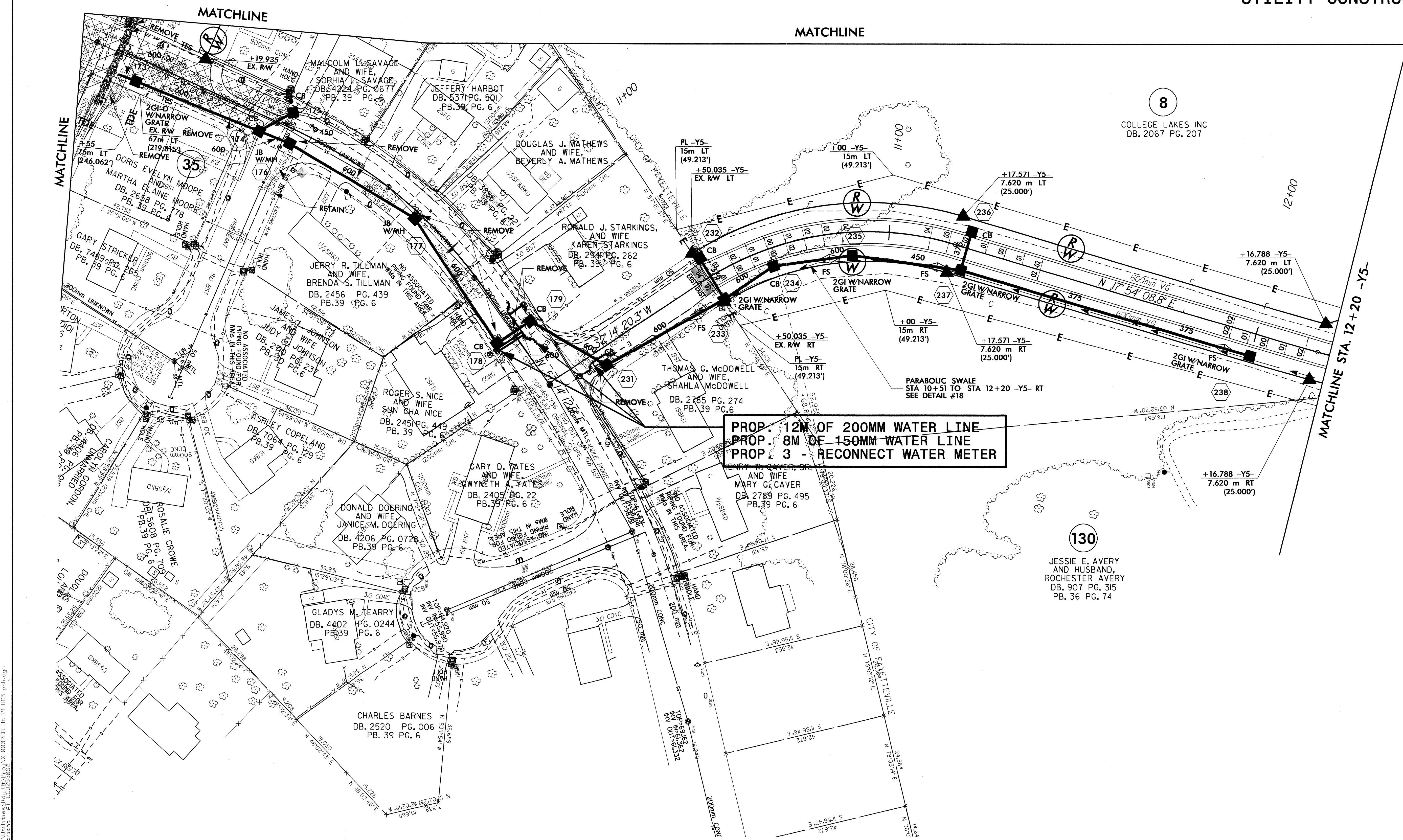


	PROJECT REFERENCE NO.	X-0002CB	SHEET NO.	UC-5
	DESIGNED BY:	MRB		
	DRAWN BY:	MRB		
	CHECKED BY:	RBW		
	APPROVED BY:	RBW		
REVISED:		NORTH CAROLINA DEPARTMENT OF TRANSPORTATION UTILITIES ENGINEERING SEC. PHONE: (919)250-4128 FAX: (919)250-4119		
		UTILITY CONSTRUCTION PLANS ONLY		

NAD 83  
NC GRID



UTILITY CONSTRUCTION



8  
COLLEGE LAKES INC  
DB. 2067 PG. 207

130  
JESSIE E. AVERY  
AND HUSBAND,  
ROCHESTER AVERY  
DB. 907 PG. 315  
PB. 36 PG. 74

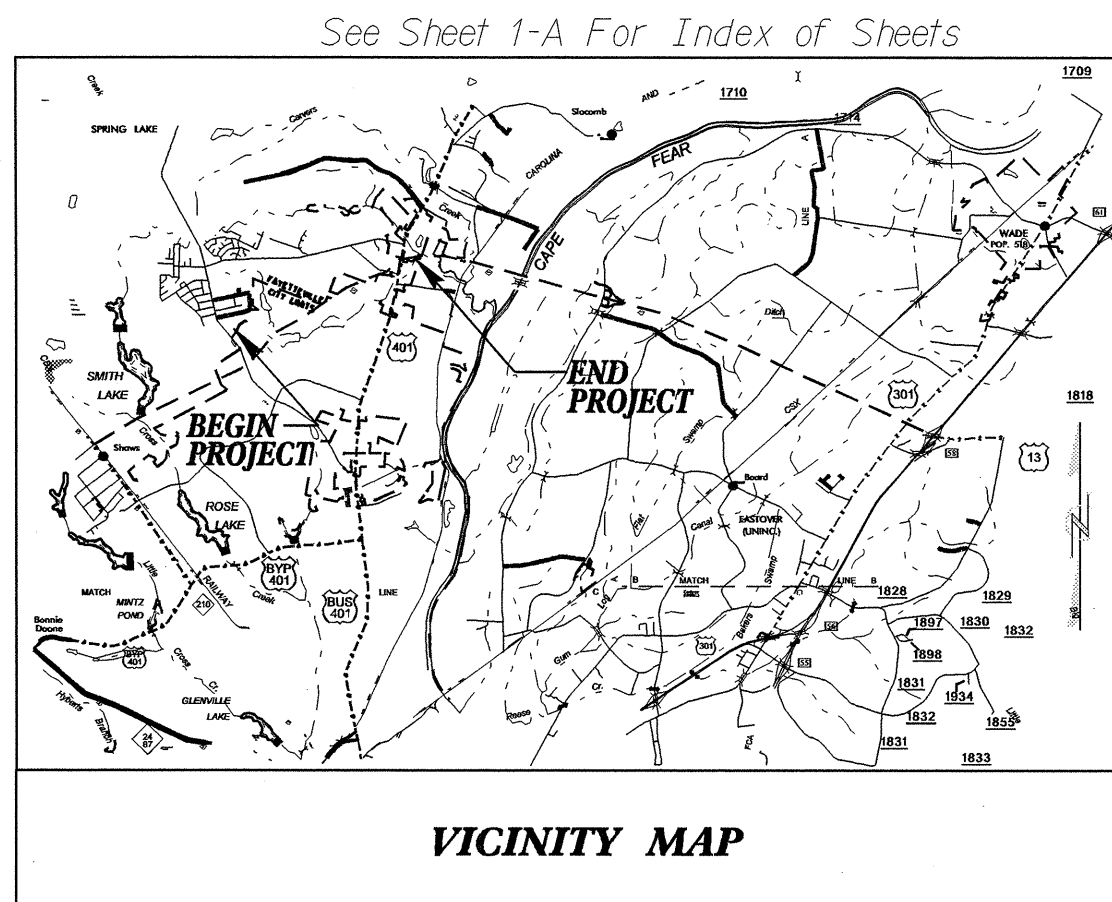
PROP. 12M OF 200MM WATER LINE  
PROP. 8M OF 150MM WATER LINE  
PROP. 3 - RECONNECT WATER METER

8/17/2010 10:04  
 R:\Utilities\Projects\X-0002CB\19\_LUC5.plt.dgn  
 dbright - AT 10:05:56





9/09/99



STATE OF NORTH CAROLINA  
DIVISION OF HIGHWAYS

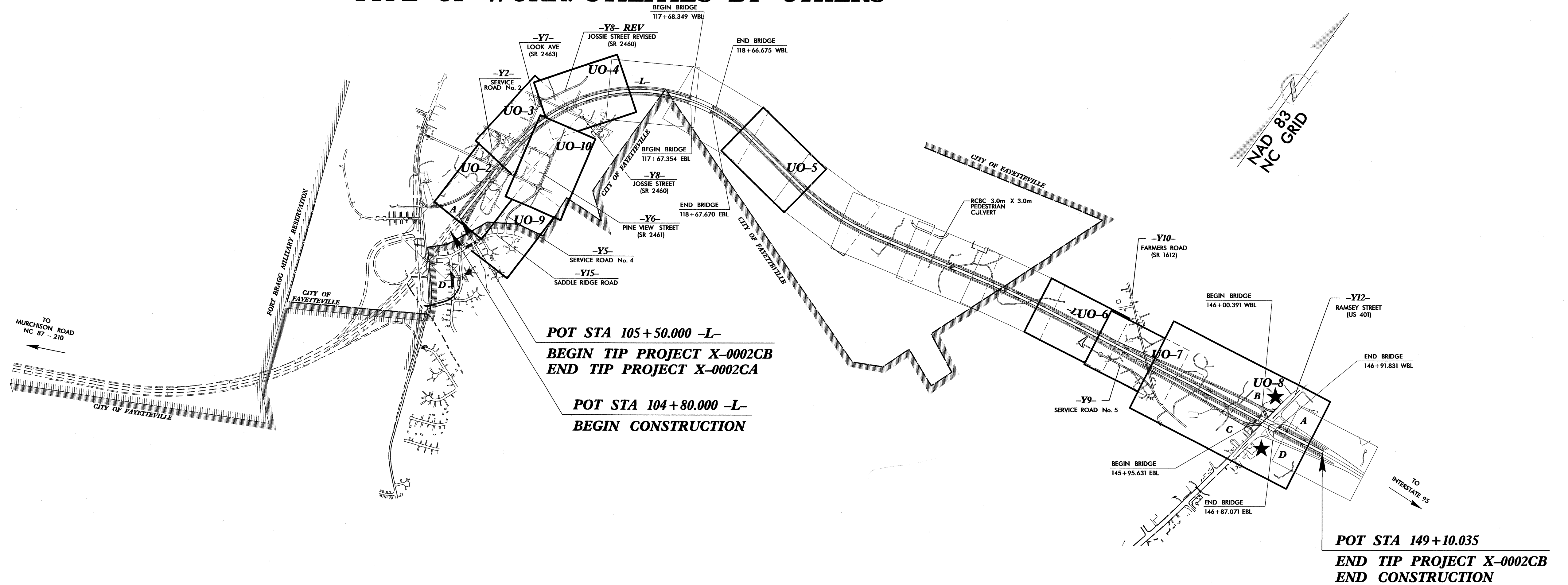
**UTILITIES BY OTHERS PLANS  
CUMBERLAND COUNTY**

**LOCATION: NC 24 EXTENSION (FAYETTEVILLE OUTER LOOP)  
FROM EAST OF SR 1600 (MCARTHUR RD.)  
TO WEST OF US 401 (RAMSEY ST.)  
TYPE OF WORK: UTILITIES BY OTHERS**

ALL DIMENSIONS IN THESE PLANS ARE IN METERS AND/OR MILLIMETERS UNLESS OTHERWISE SHOWN

T.I.P. NO.	SHEET NO.
X-0002CB	UO-1

**PROJECT: X-0002CB**



**GRAPHIC SCALES**

0  
PLANS

0  
PROFILE (HORIZONTAL)

0  
PROFILE (VERTICAL)

**INDEX OF SHEETS**

SHEET NO.	DESCRIPTION
UO-1	TITLE SHEET
UO-2 THRU UO-10	UTILITY BY OTHERS PLAN SHEETS

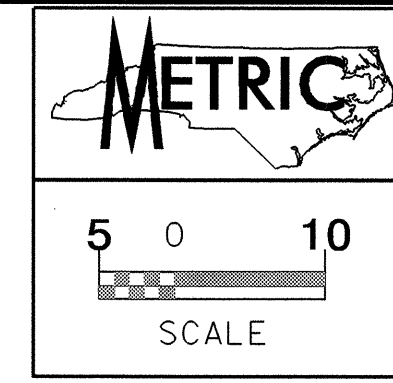
- UTILITY OWNERS ON PROJECT**
- (1) FAYETTEVILLE PWC - POWER (DISTRIBUTION)
  - (2) FAYETTEVILLE PWC - POWER (TRANSMISSION)
  - (3) PROGRESS ENERGY - POWER (DISTRIBUTION)
  - (4) CENTURY LINK - TELEPHONE
  - (5) TIME WARNER - CATV
  - (6) PIEDMONT NATURAL GAS

PREPARED IN THE OFFICE OF:  
**DIVISION OF HIGHWAYS  
DESIGN SERVICES  
UTILITY SECTION**

1591 MAIL SERVICES CENTER  
RALEIGH NC 27699-1591  
PHONE (919) 250-4128  
FAX (919) 250-4119

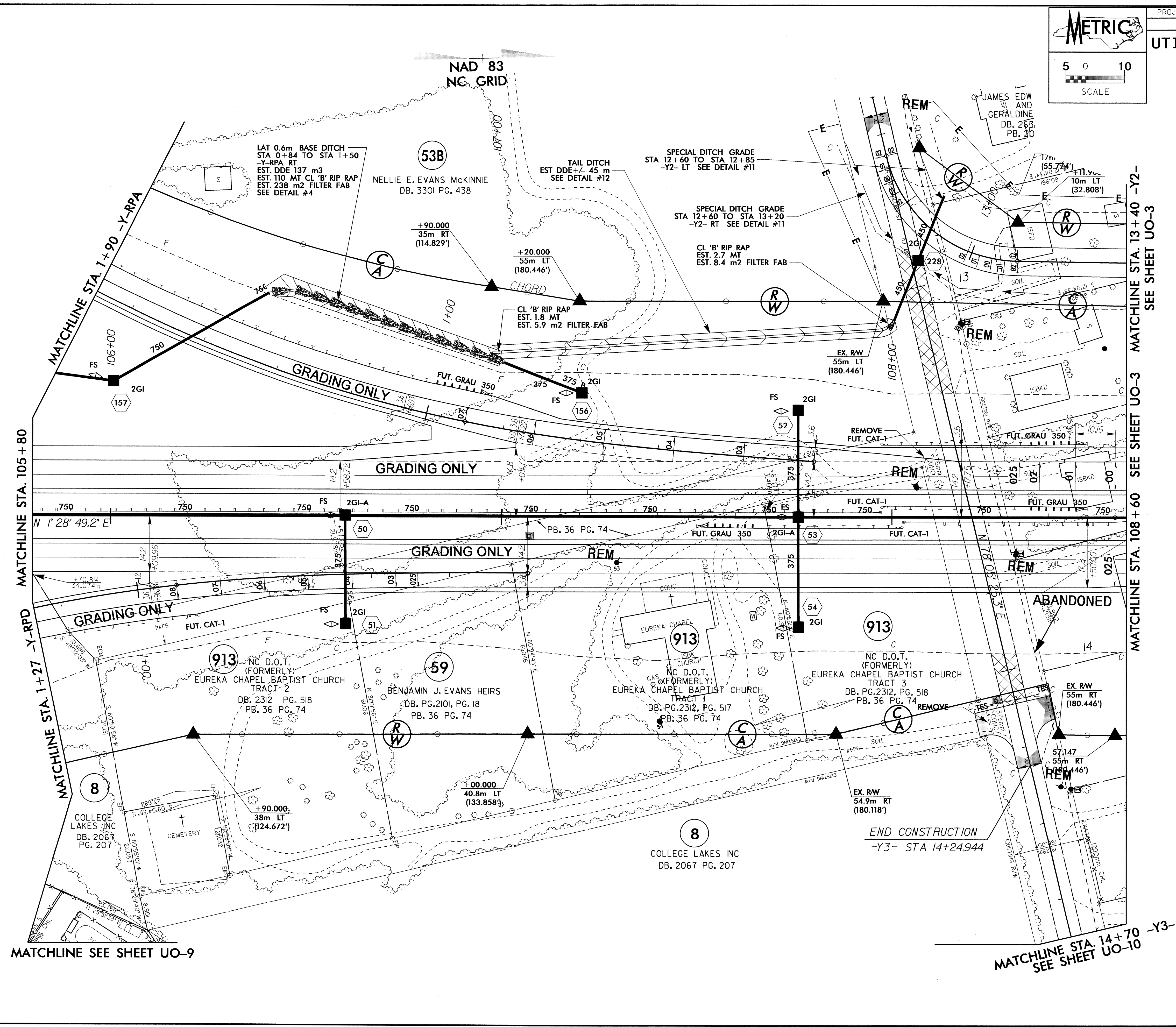
**Roger Worthington, P.E.** UTILITIES SECTION ENGINEER  
**R. B. WILKINS, P.E.** UTILITIES SQUAD LEADER PROJECT ENGINEER  
**MICHAEL R. BRIGHT** UTILITIES PROJECT DESIGNER

23-AUG-2010 15:25 US:\Projects\X-0002CB-Ut-Title-UO1.psh.dgn  
R:\Utilities\Files\11125302



**UTILITIES BY OTHERS**

NOTE:  
ALL PROPOSED UTILITY WORK  
SHOWN ON THIS SHEET WILL  
BE DONE BY OTHERS



MATCHLINE SEE SHEET UO-9

MATCHLINE STA. 14+70 -Y3-  
SEE SHEET UO-10

MATCHLINE STA. 105+80

MATCHLINE STA. 13+40 -Y2-  
SEE SHEET UO-3

MATCHLINE STA. 108+60 SEE SHEET UO-3

MATCHLINE STA. 1+27 -Y-RPD

MATCHLINE STA. 1+90 -Y-RPA

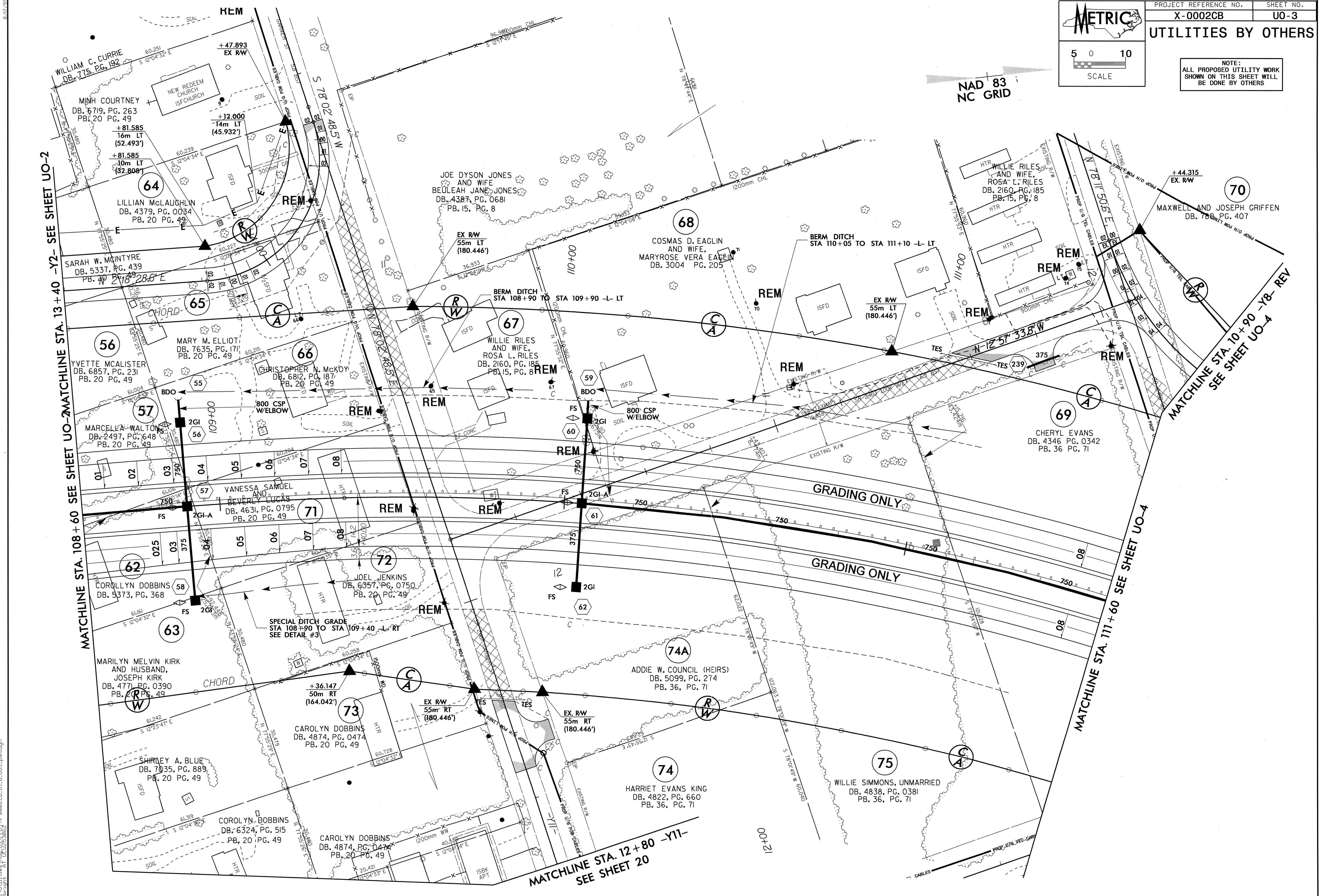
23-AUG-2010 13:59  
 R:\Utilities\Projects\X-0002CB.Lit-5.UO2\_pah.dgn  
 User: pah  
 Plot: UO2S3062



**METRIC**

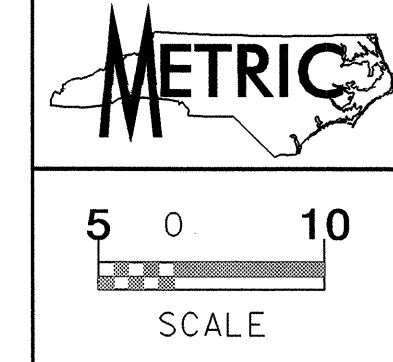
5 0 10  
SCALE

PROJECT REFERENCE NO.	SHEET NO.
X-0002CB	UO-3
<b>UTILITIES BY OTHERS</b>	
<p>NOTE: ALL PROPOSED UTILITY WORK SHOWN ON THIS SHEET WILL BE DONE BY OTHERS</p>	



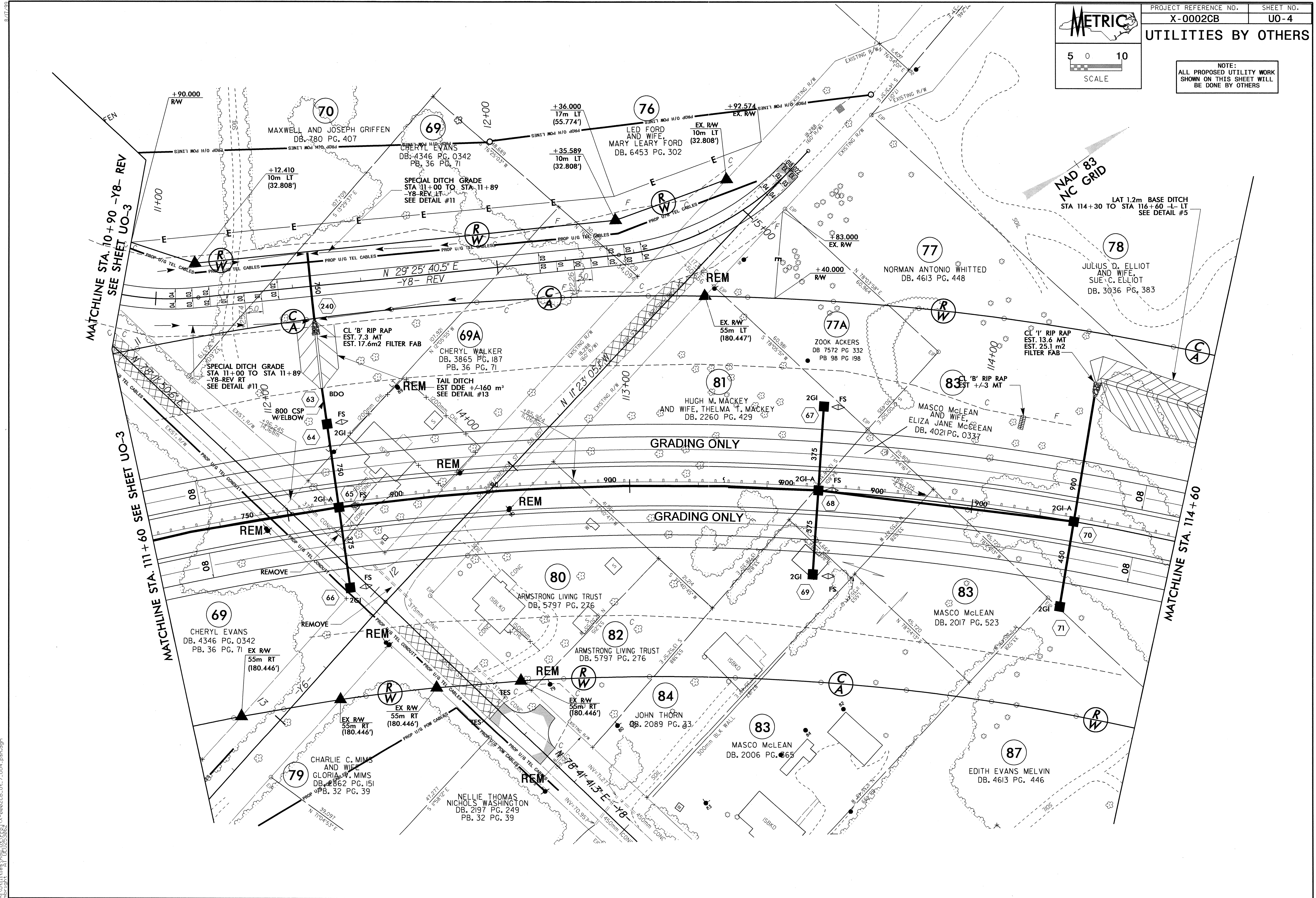
24-AUG-2010 08:58  
 R:\Utilities\Projects\X-0002CB\UO-3\UO3.dgn  
 6/17/09





**UTILITIES BY OTHERS**

NOTE:  
ALL PROPOSED UTILITY WORK  
SHOWN ON THIS SHEET WILL  
BE DONE BY OTHERS



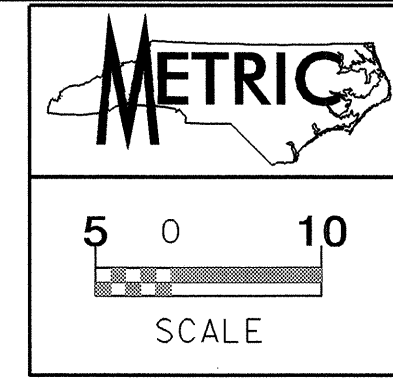
MATCHLINE STA. 10+90 -Y8- REV  
SEE SHEET UO-3

MATCHLINE STA. 111+60 SEE SHEET UO-3

MATCHLINE STA. 114+60

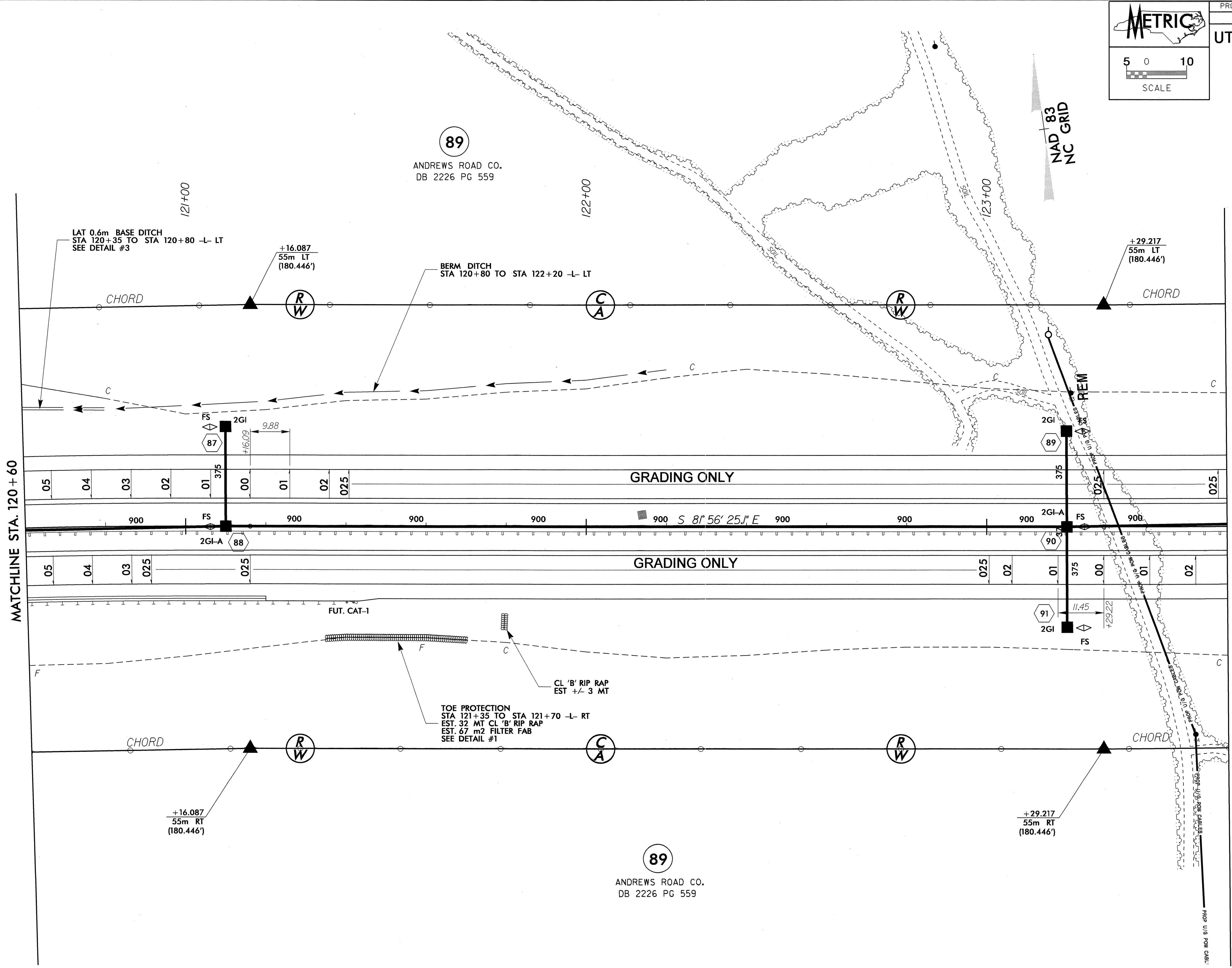
23-AUG-2010 14:00  
R:\Utilities\Projects\X-0002CB\Ut-7\_UO4.psd.dgn  
Author: [unreadable]





UTILITIES BY OTHERS

NOTE:  
ALL PROPOSED UTILITY WORK  
SHOWN ON THIS SHEET WILL  
BE DONE BY OTHERS



89  
ANDREWS ROAD CO.  
DB 2226 PG 559

NAD 83  
NC GRID

LAT 0.6m BASE DITCH  
STA 120+35 TO STA 120+80 -L- LT  
SEE DETAIL #3

BERM DITCH  
STA 120+80 TO STA 122+20 -L- LT

+29.217  
55m LT  
(180.446')

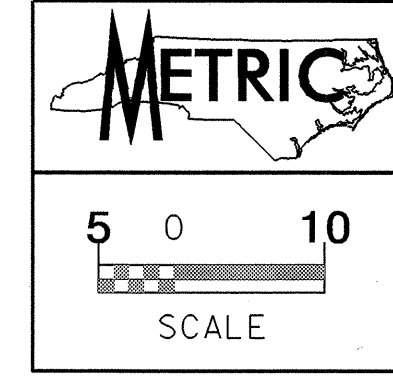
+16.087  
55m RT  
(180.446')

+29.217  
55m RT  
(180.446')

TOE PROTECTION  
STA 121+35 TO STA 121+70 -L- RT  
EST. 32 MT CL 'B' RIP RAP  
EST. 67 m<sup>2</sup> FILTER FAB  
SEE DETAIL #1

89  
ANDREWS ROAD CO.  
DB 2226 PG 559

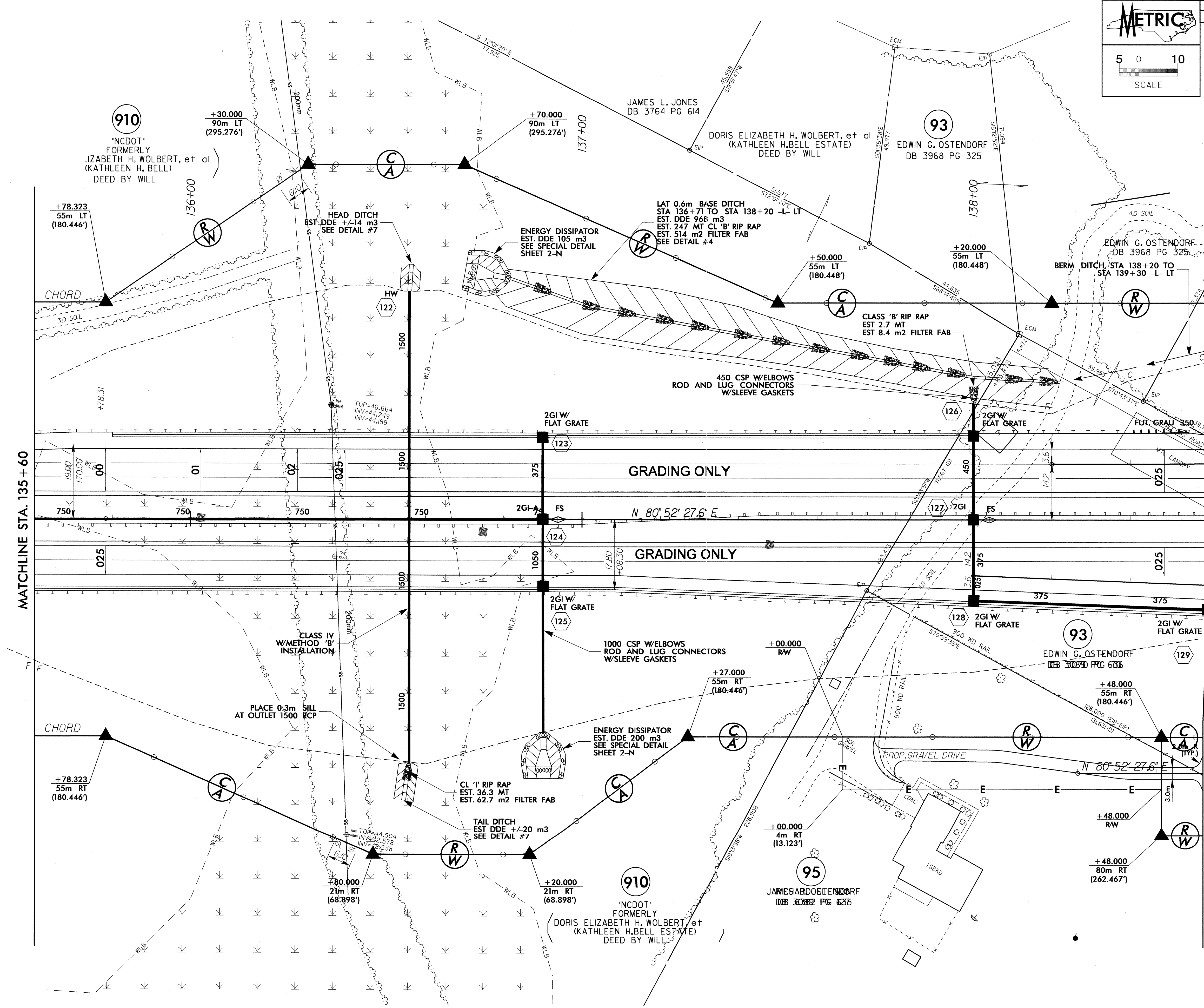
23-AUG-2010 14:44  
 R:\Utilities\Projects\X-0002CB-Ut-10\U05-ph.dgn  
 User: jay



UTILITIES BY OTHERS

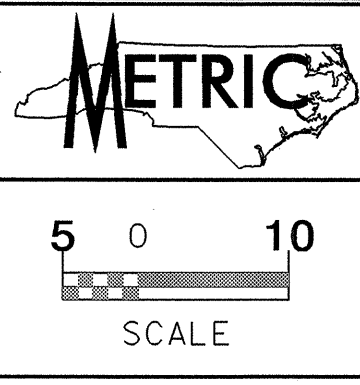
NOTE:  
ALL PROPOSED UTILITY WORK  
SHOWN ON THIS SHEET WILL  
BE DONE BY OTHERS

NAD 83



23-AUG-2006 14:02  
 R:\Utilities\X-0002CB.Lt.\5\_UO6\_psh.dgn  
 User: jason...  
 Plot Date: 08/23/06

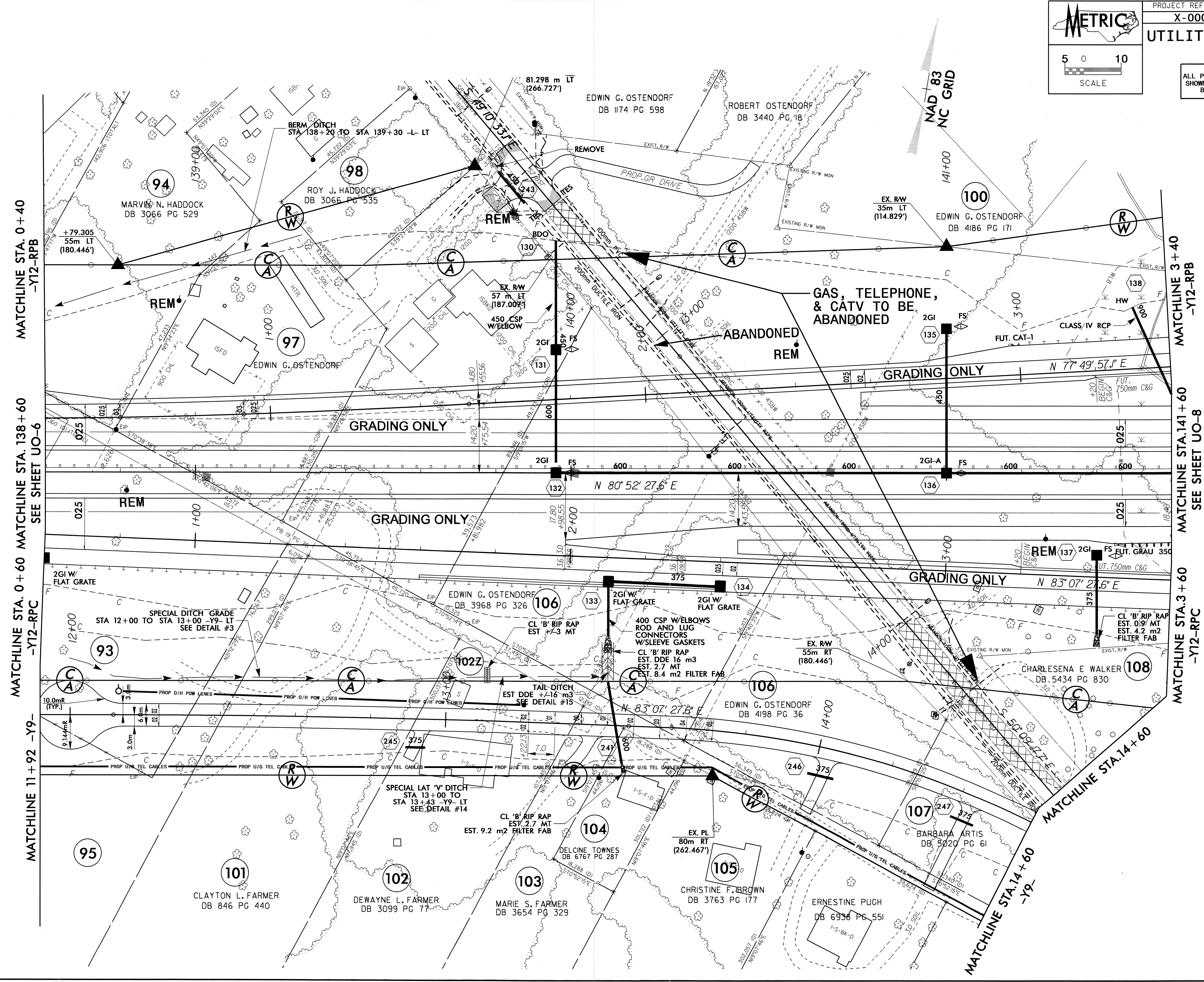




PROJECT REFERENCE NO. X-0002CB SHEET NO. UO-7

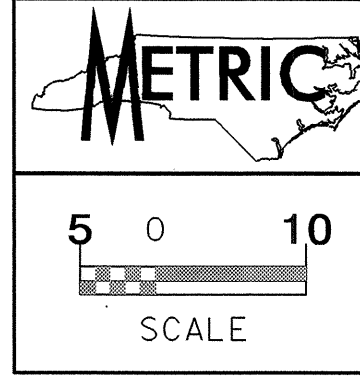
### UTILITIES BY OTHERS

NOTE: ALL PROPOSED UTILITY WORK SHOWN ON THIS SHEET WILL BE DONE BY OTHERS



23-AUG-2010 14:02  
 R:\Utility\Drawings\Subcontract\X-0002CB-Uo-16-U07-phh.dgn  
 Author: PAH  
 Date: 08/23/2010

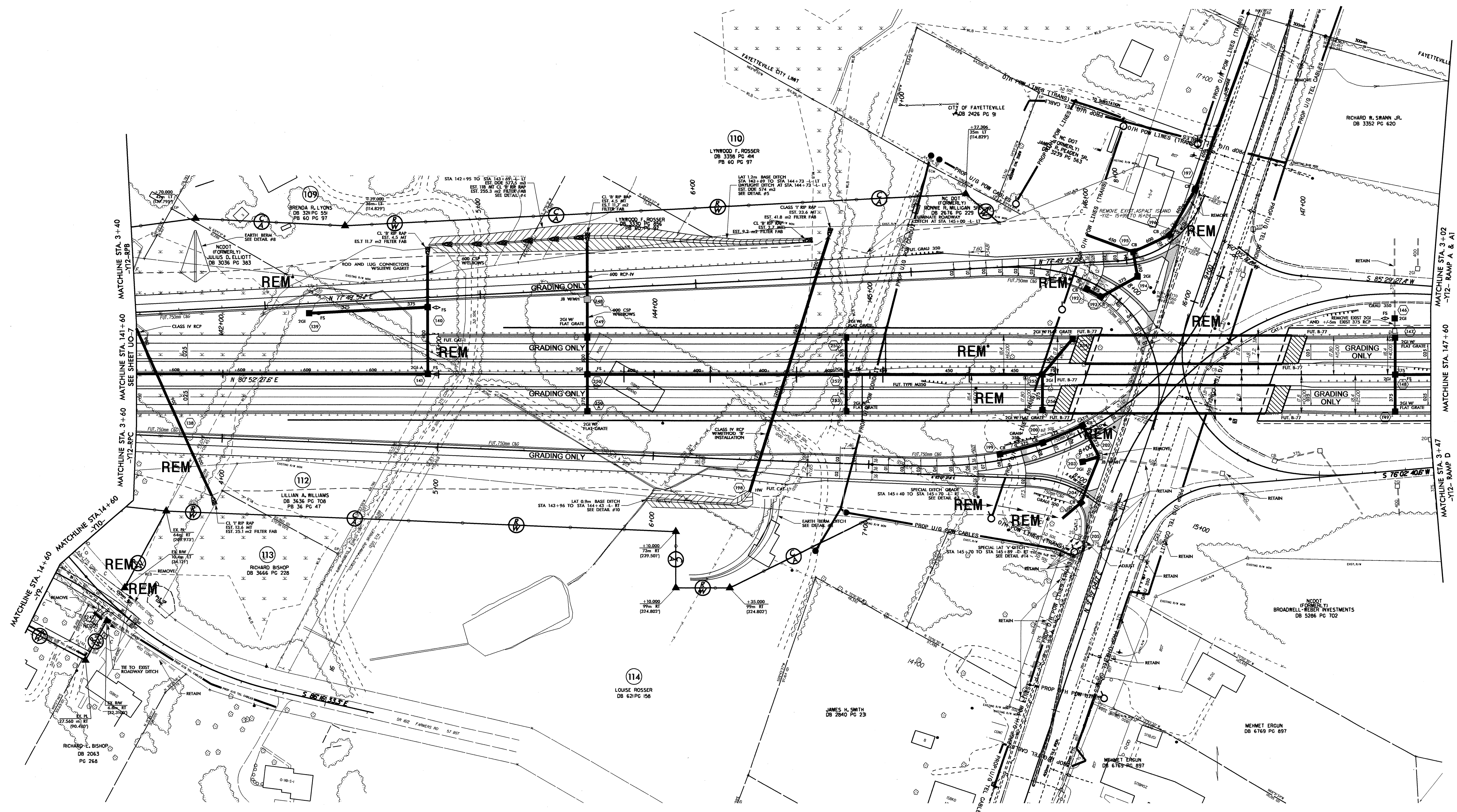




PROJECT REFERENCE NO. X-0002CB SHEET NO. U0-8

UTILITIES BY OTHERS

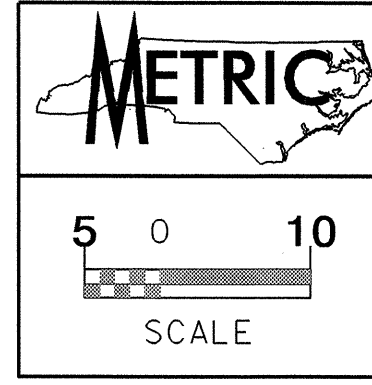
NOTE:  
ALL PROPOSED UTILITY WORK  
SHOWN ON THIS SHEET WILL  
BE DONE BY OTHERS



NAD 83  
NC GRID

12  
11/17/2010 14:28  
C:\Users\jgibson\Documents\Projects\X-0002CB\11-17-10\UD8\_psh.dgn  
11/17/2010 14:28  
11/17/2010 14:28



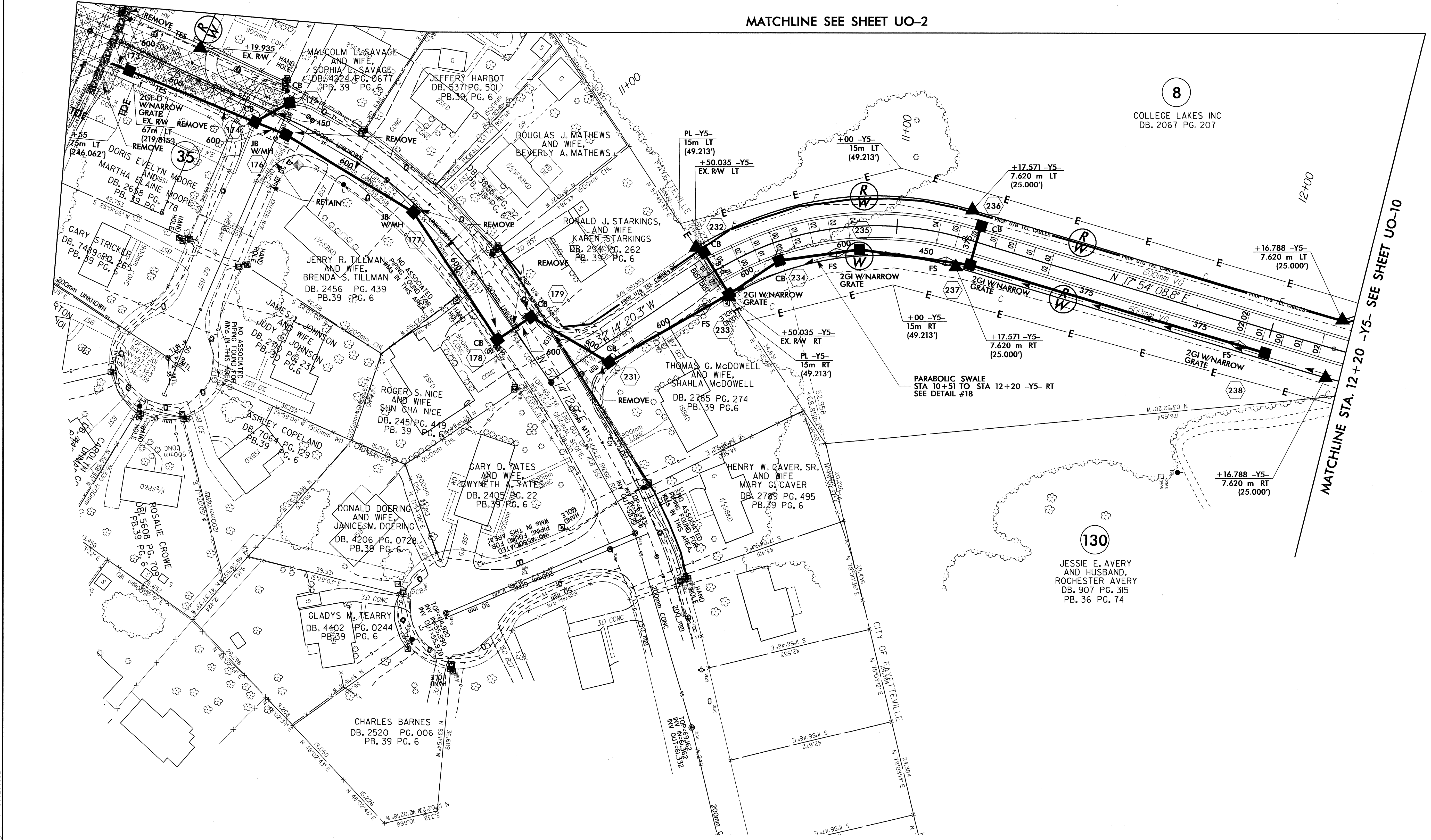


UTILITIES BY OTHERS

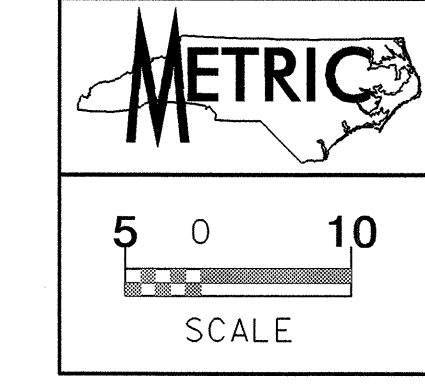
NOTE: ALL PROPOSED UTILITY WORK SHOWN ON THIS SHEET WILL BE DONE BY OTHERS

NAD 83 NC GRID

MATCHLINE SEE SHEET U0-2

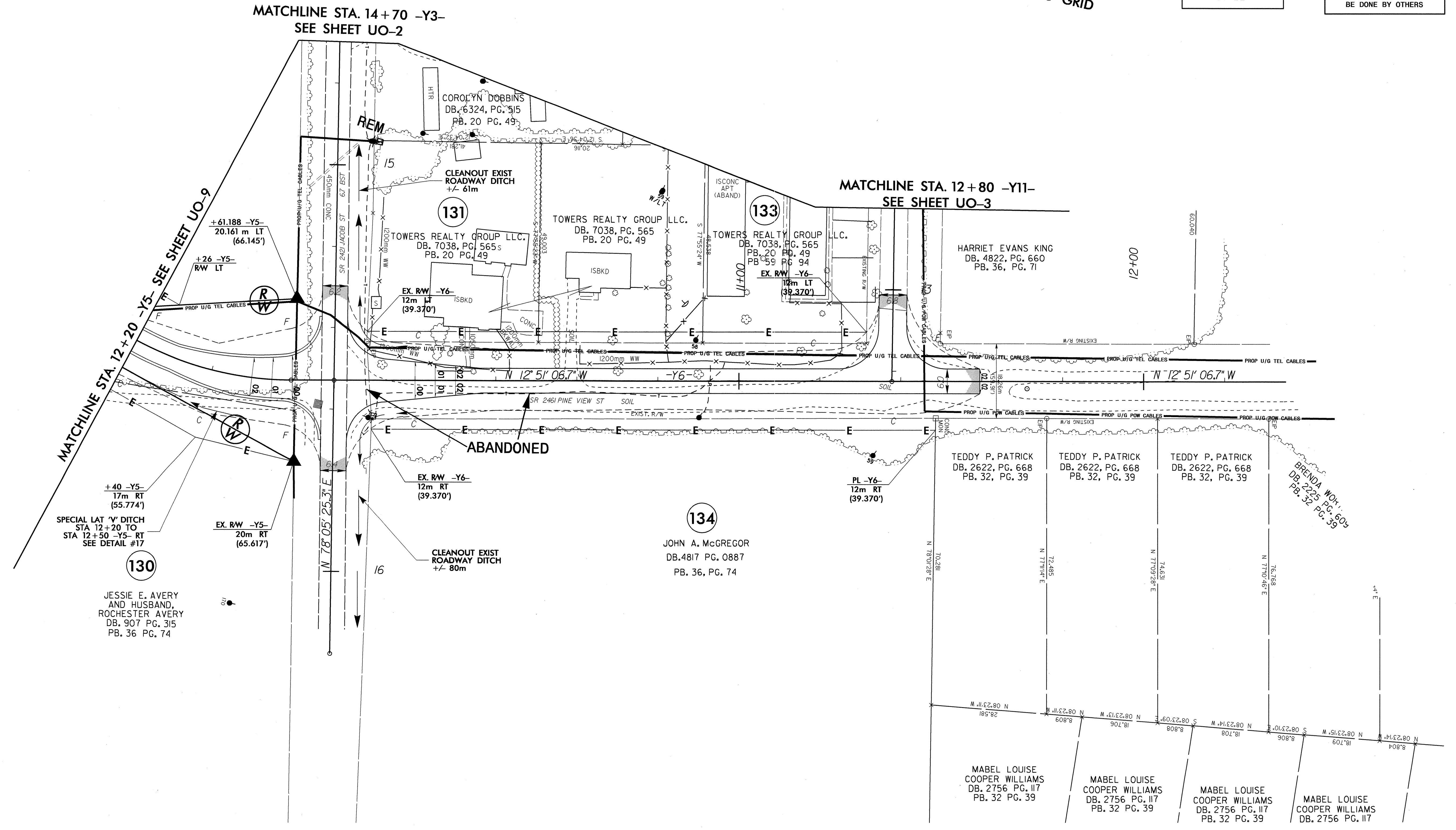


23-AUG-2010 14:04  
R:\Utilities\Projects\X-0002CB\U0-9\U09\_pah.dgn  
psh



NAD 83  
 NC GRID

23-AUG-2010 14:06  
 U:\all\trea\proj\1553062\X-0002CB-U0-10\U0-10\_psh.dgn  
 8/17/09



10

12