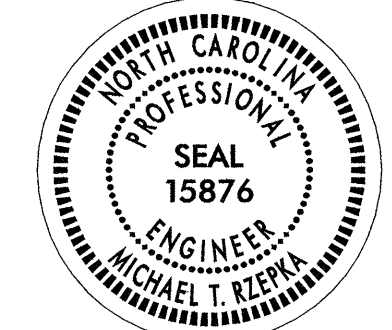
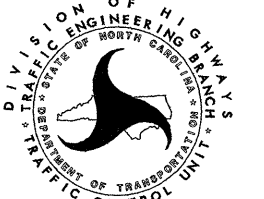


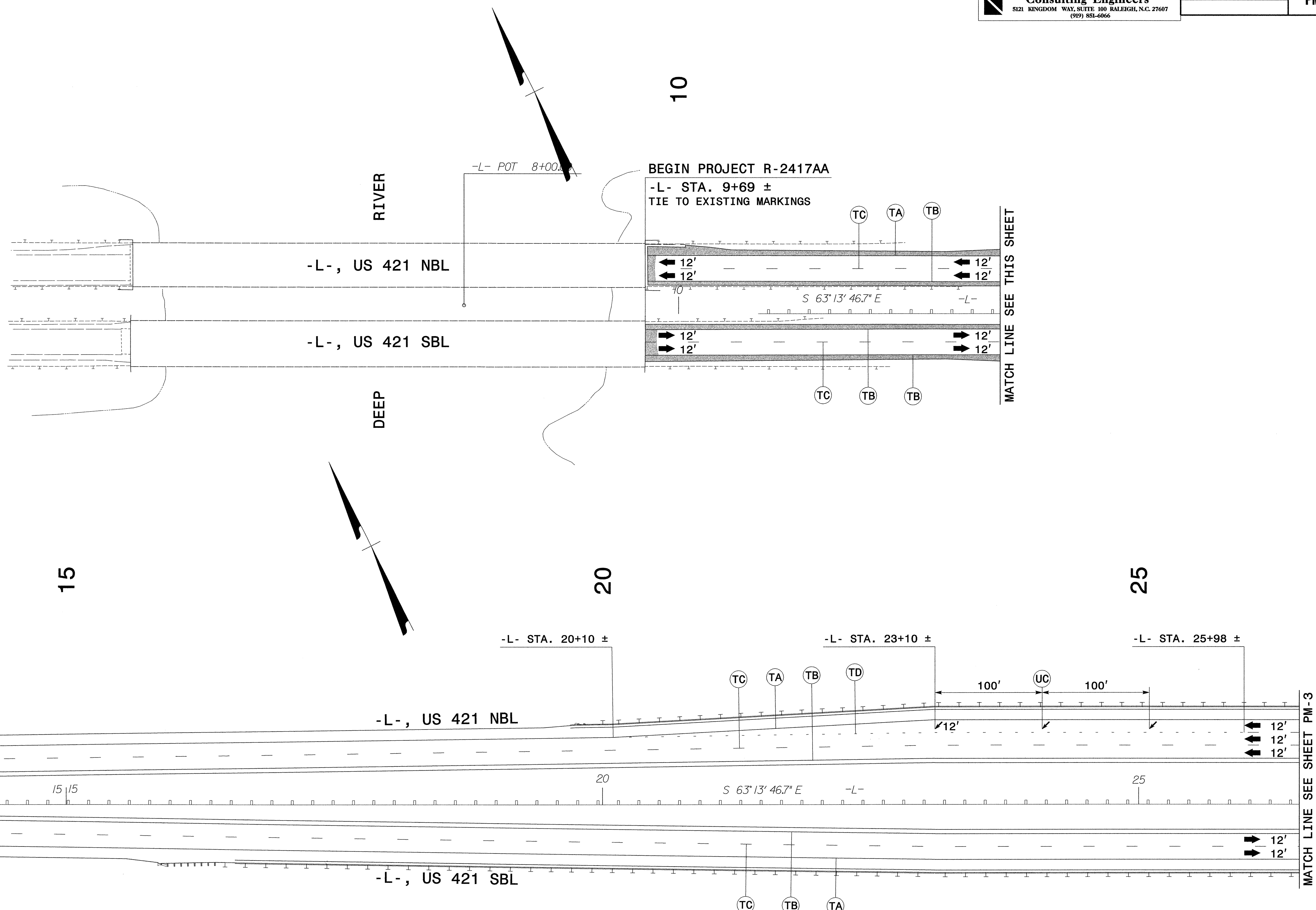
**FINAL PAV'T MARKING SCHEDULE**

SYMBOL	DESCRIPTION	PAY ITEM
PAVEMENT MARKING LINES		
TA	WHITE EDGELINE	THERMOPLASTIC (4", 90 mils)
TB	YELLOW EDGELINE	
TC	10 ft. WHITE SKIP	THERMOPLASTIC (4", 120 mils)
TD	2 ft. WHITE MINISKIP/13 ft. SPACING	
TE	WHITE SOLID LANE LINE	
TI	YELLOW DOUBLE CENTER LINE	
T8	2 ft. WHITE MINISKIP/8 ft. SPACING	
TP	WHITE GORELINE	THERMOPLASTIC (8", 90 mils)
TT	YELLOW DIAGONAL	
T2	WHITE STOP BAR	THERMOPLASTIC (24", 120 mils)
CA	WHITE EDGELINE	COLD APPLIED PLASTIC (4")
CB	YELLOW EDGELINE	
CC	10 ft. WHITE SKIP	
CD	2 ft. WHITE MINISKIP	
PAVEMENT MARKING SYMBOLS		
UA	LEFT TURN ARROW	THERMOPLASTIC THICK SYMBOL (90 mils)
UC	STRAIGHT ARROW	
UE	COMBO STRAIGHT & RIGHT TURN ARROW	
UN	YIELD LINE SHARK TEETH	
DA	LEFT TURN ARROW	COLD APPLIED PLASTIC SYMBOL
DC	STRAIGHT ARROW	
PAVEMENT MARKING CHARACTERS		
UI	ALPHANUMERIC CHARACTER	THERMOPLASTIC THICK CHARACTER (120 mils)
DI	ALPHANUMERIC CHARACTER	COLD APPLIED PLASTIC CHARACTER
PAVEMENT MARKERS		
MA	YELLOW AND YELLOW	PERMANENT RAISED
MB	CRYSTAL AND RED	

SEE ROADWAY STANDARD DRAWING NUMBERS 1205.01, 1205.02, 1205.03, 1205.04, 1205.05, 1205.06, 1205.08, 1205.09, 1205.12, 1250.01, 1251.01, 1261.01, 1261.02, 1262.01, 1267.01, 1267.02, AND 1267.03

10/13/2010  
 R:\1700\FIC\T\office\Control\TCP\002\seled\VR2417AA\_TC\_pmp1.dgn  
 Por-ence & Hutcheson, Inc.

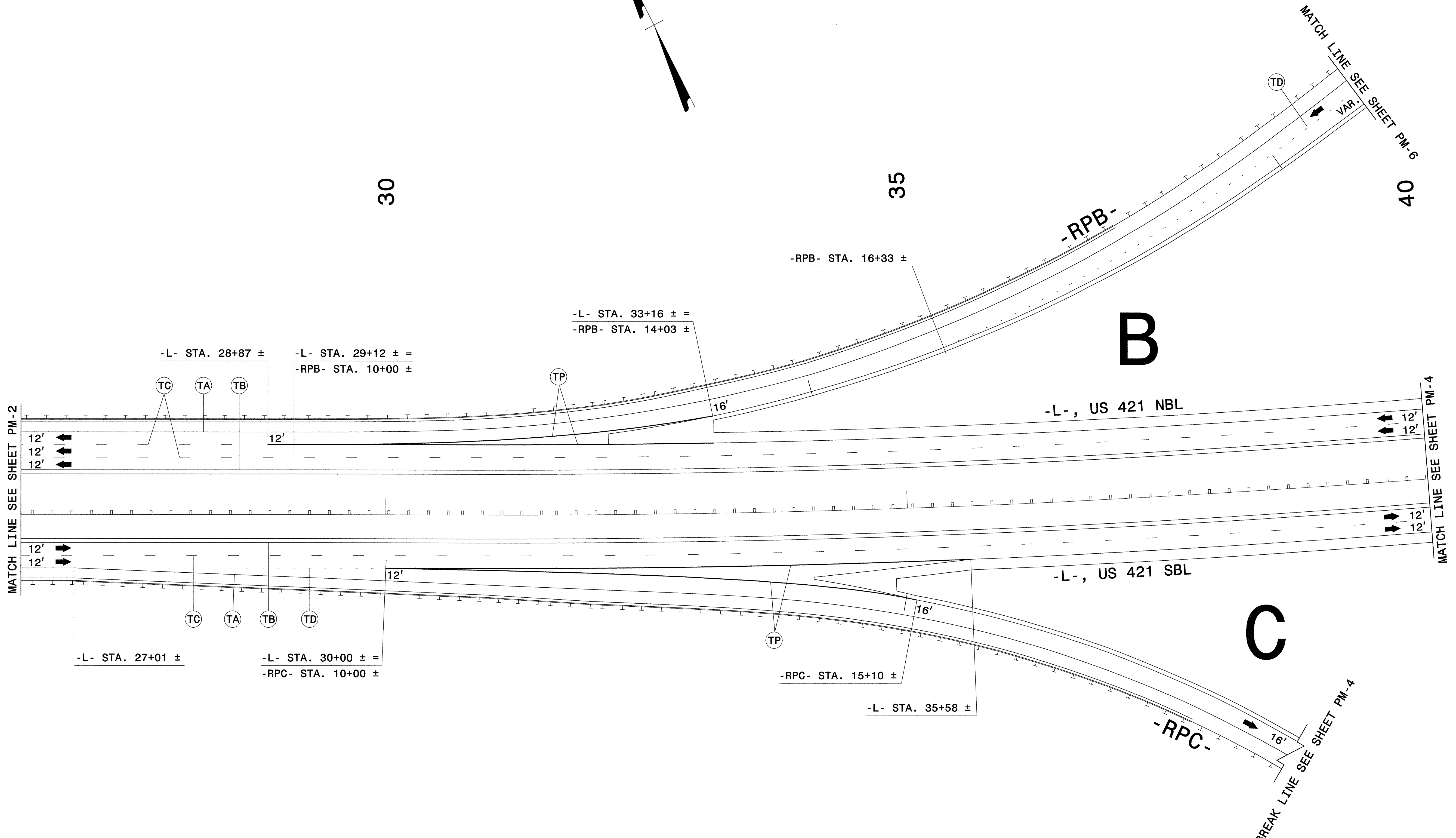
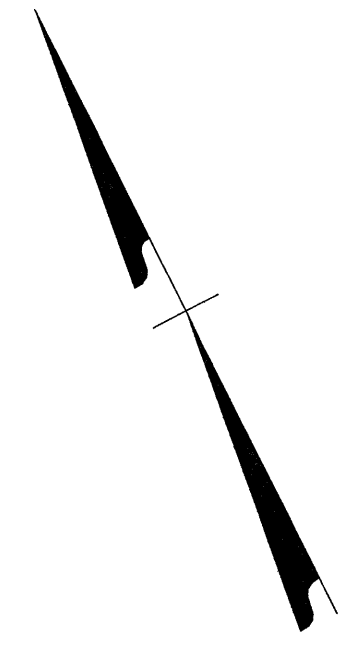
APPROVED: <i>Michael T. Riepen</i> DATE: 10-13-10		<b>FINAL PAVEMENT MARKING PLAN</b>	
SEAL 	SCALE: NONE		REVISIONS
	DATE: 10-10		
	DWG. BY: BLM		
	DESIGN BY: MTR		
REVIEWED BY: MSA			



**NOTES:**

- SEE SHEET PM-1, FOR FINAL PAVEMENT MARKING SCHEDULE.
- PAVEMENT MARKINGS, SYMBOLS, AND CHARACTERS ARE TO BE MARKED ACCORDING TO ROADWAY STANDARD DRAWINGS UNLESS OTHERWISE NOTED IN THE PLANS.
- PAVEMENT MARKERS ARE TO BE SPACED ACCORDING TO THE ROADWAY STANDARD DRAWINGS.

APPROVED: <i>[Signature]</i> DATE: 10-13-10 	<h2 style="text-align: center;">FINAL PAVEMENT MARKING PLAN</h2> <table border="1"> <tr> <td>SCALE: NONE</td> <td rowspan="4"> </td> <td>REVISIONS</td> </tr> <tr> <td>DATE: 10-10</td> <td></td> </tr> <tr> <td>DWG. BY: BLM</td> <td></td> </tr> <tr> <td>DESIGN BY: MTR</td> <td></td> </tr> <tr> <td>REVIEWED BY: MSA</td> <td></td> <td>CADD FILE</td> </tr> </table>	SCALE: NONE		REVISIONS	DATE: 10-10		DWG. BY: BLM		DESIGN BY: MTR		REVIEWED BY: MSA		CADD FILE
SCALE: NONE		REVISIONS											
DATE: 10-10													
DWG. BY: BLM													
DESIGN BY: MTR													
REVIEWED BY: MSA		CADD FILE											

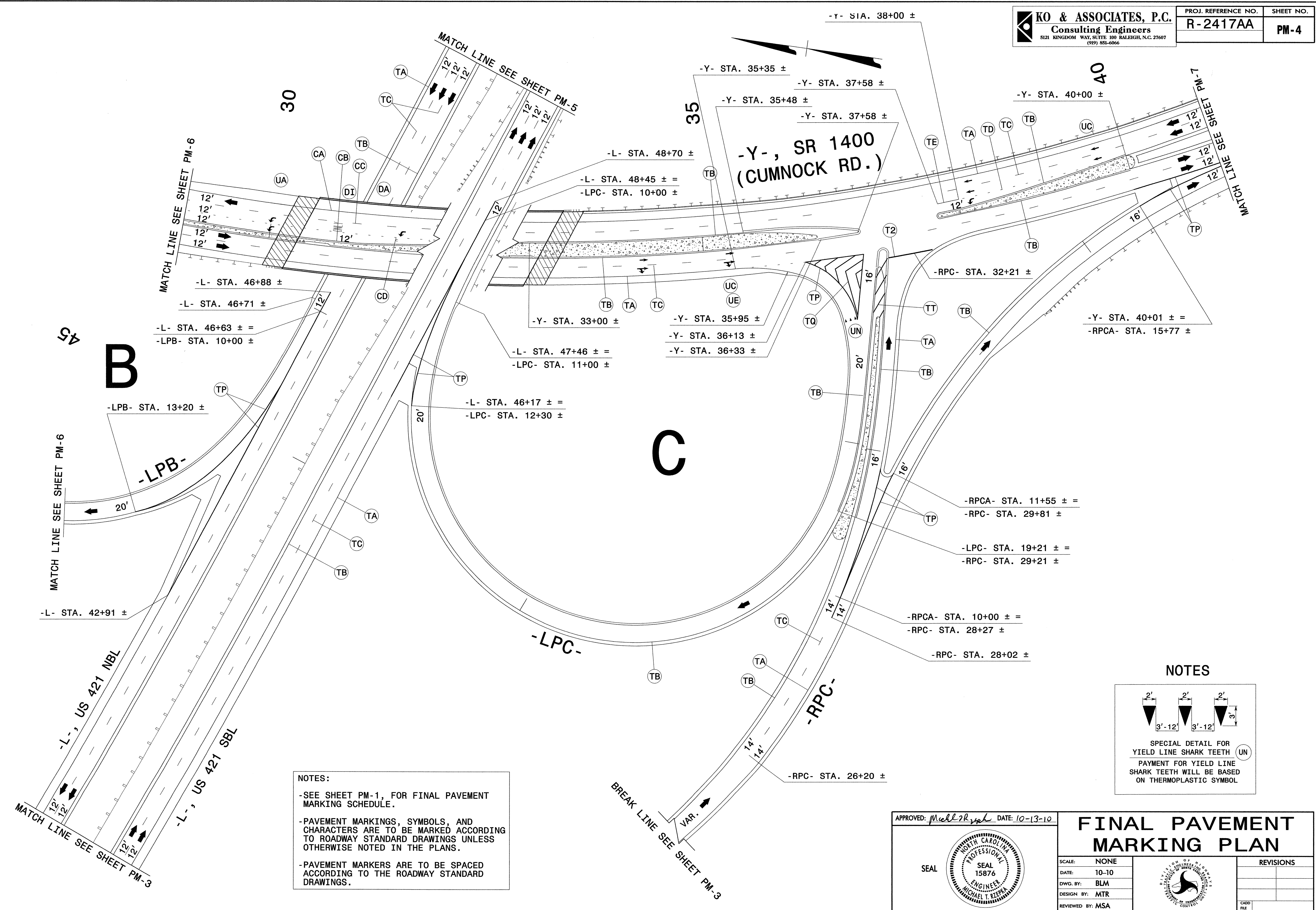


NOTES:

- SEE SHEET PM-1, FOR FINAL PAVEMENT MARKING SCHEDULE.
- PAVEMENT MARKINGS, SYMBOLS, AND CHARACTERS ARE TO BE MARKED ACCORDING TO ROADWAY STANDARD DRAWINGS UNLESS OTHERWISE NOTED IN THE PLANS.
- PAVEMENT MARKERS ARE TO BE SPACED ACCORDING TO THE ROADWAY STANDARD DRAWINGS.

APPROVED: <i>Michael T. Rzepka</i> DATE: 10-13-10	<b>FINAL PAVEMENT MARKING PLAN</b>	
	SCALE: NONE	
	DATE: 10-10	
	DWG. BY: BLM	
	DESIGN BY: MTR	
REVIEWED BY: MSA	REVISIONS	



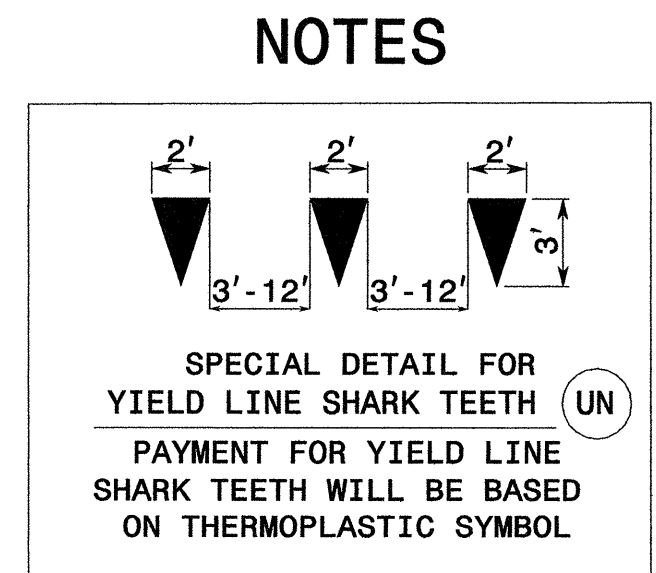


**B**

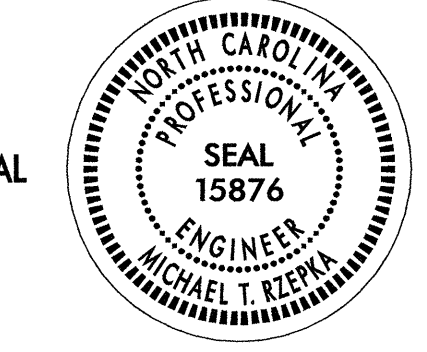
**C**

**NOTES:**

- SEE SHEET PM-1, FOR FINAL PAVEMENT MARKING SCHEDULE.
- PAVEMENT MARKINGS, SYMBOLS, AND CHARACTERS ARE TO BE MARKED ACCORDING TO ROADWAY STANDARD DRAWINGS UNLESS OTHERWISE NOTED IN THE PLANS.
- PAVEMENT MARKERS ARE TO BE SPACED ACCORDING TO THE ROADWAY STANDARD DRAWINGS.

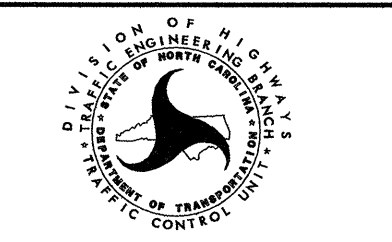


APPROVED: *Michael T. Kierpa* DATE: 10-13-10



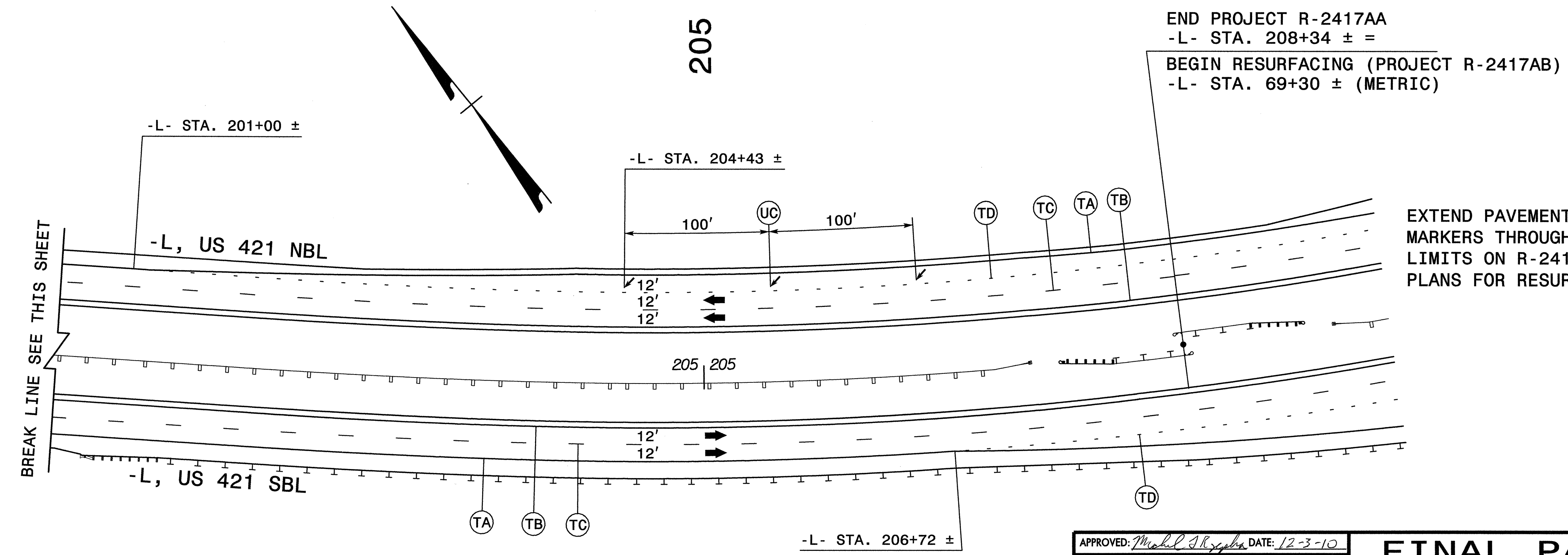
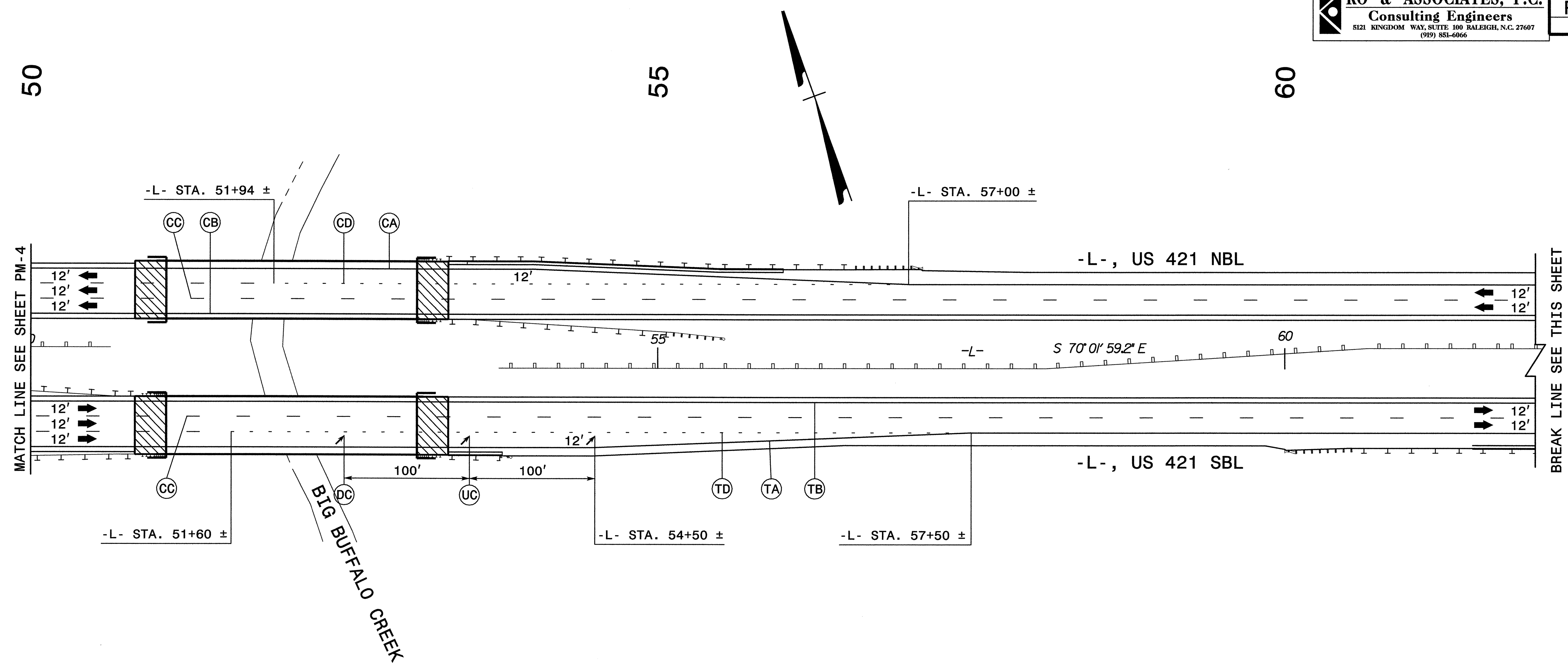
**FINAL PAVEMENT MARKING PLAN**

SCALE: NONE  
 DATE: 10-10  
 DWG. BY: BLM  
 DESIGN BY: MTR  
 REVIEWED BY: MSA



REVISIONS

CADD FILE



END PROJECT R-2417AA  
 -L- STA. 208+34 ± =  
 BEGIN RESURFACING (PROJECT R-2417AB)  
 -L- STA. 69+30 ± (METRIC)

EXTEND PAVEMENT MARKINGS AND MARKERS THROUGH THE RESURFACING LIMITS ON R-2417AB. (SEE ROADWAY PLANS FOR RESURFACING LIMITS)

NOTES:  
 -SEE SHEET PM-1, FOR FINAL PAVEMENT MARKING SCHEDULE.  
 -PAVEMENT MARKINGS, SYMBOLS, AND CHARACTERS ARE TO BE MARKED ACCORDING TO ROADWAY STANDARD DRAWINGS UNLESS OTHERWISE NOTED IN THE PLANS.  
 -PAVEMENT MARKERS ARE TO BE SPACED ACCORDING TO THE ROADWAY STANDARD DRAWINGS.

APPROVED: *Michael T. Kierman* DATE: 12-3-10

SEAL

**FINAL PAVEMENT MARKING PLAN**

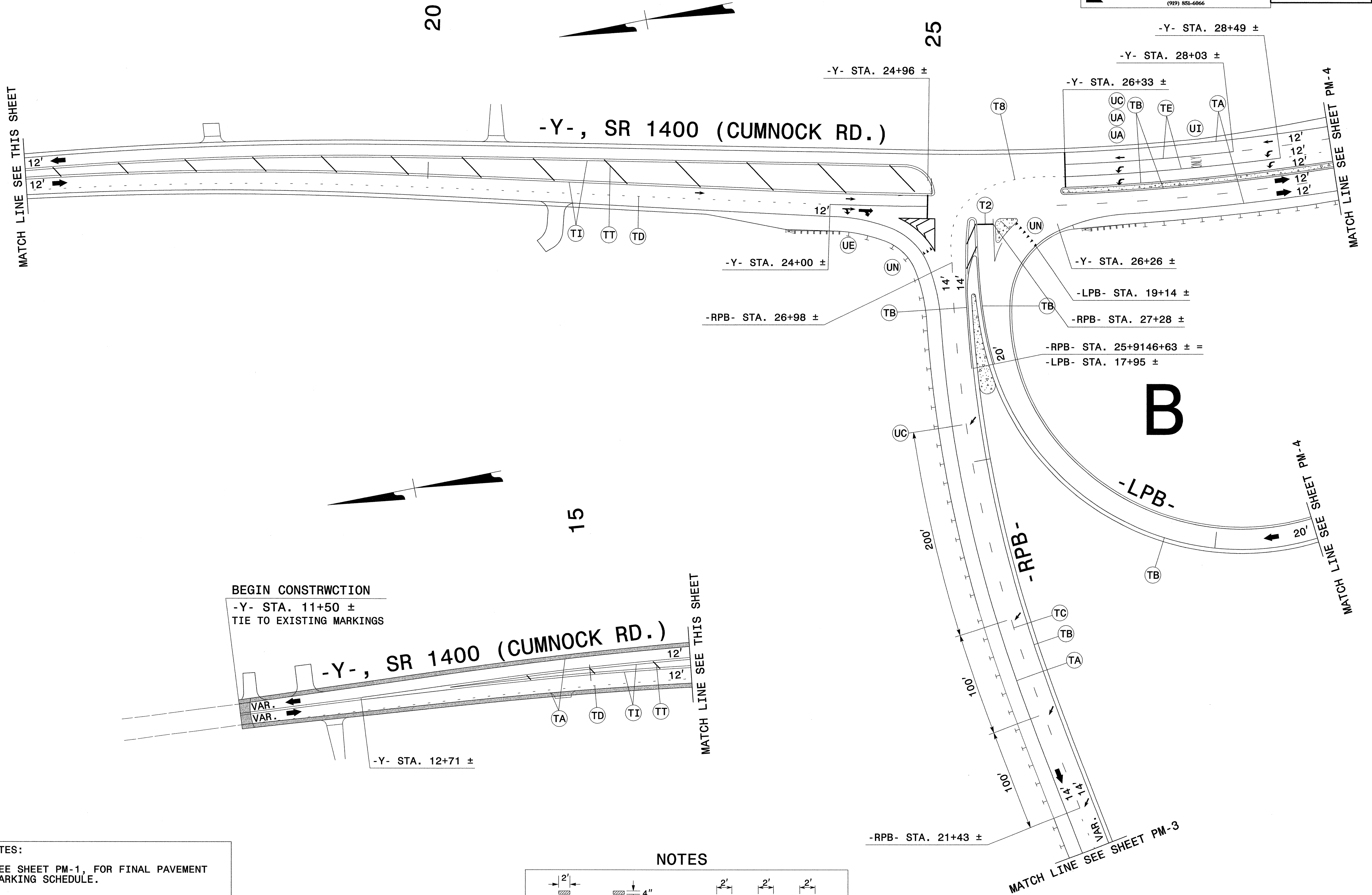
SCALE: NONE  
 DATE: 10-10  
 DWG. BY: BLM  
 DESIGN BY: MTR  
 REVIEWED BY: MSA

REVISIONS

NO.	DESCRIPTION

STATE OF NORTH CAROLINA  
 DIVISION OF HIGHWAYS  
 MICHAEL T. KIERMAN  
 PROFESSIONAL ENGINEER  
 LICENSE NO. 15876

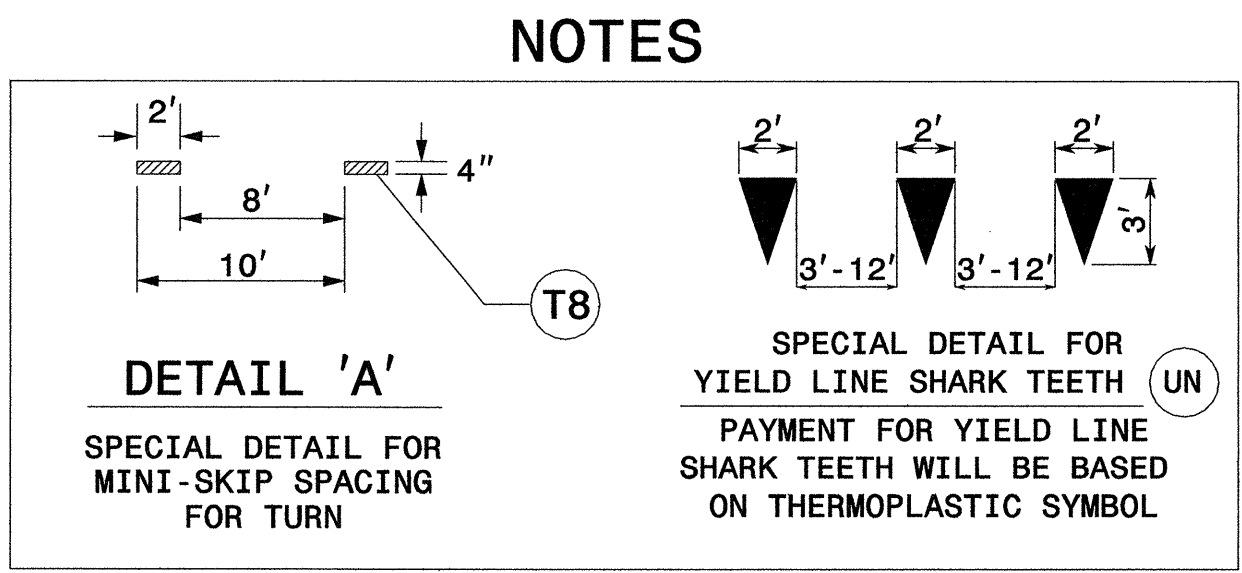
CADD FILE



BEGIN CONSTRUCTION  
 -Y- STA. 11+50 ±  
 TIE TO EXISTING MARKINGS

**NOTES:**

- SEE SHEET PM-1, FOR FINAL PAVEMENT MARKING SCHEDULE.
- PAVEMENT MARKINGS, SYMBOLS, AND CHARACTERS ARE TO BE MARKED ACCORDING TO ROADWAY STANDARD DRAWINGS UNLESS OTHERWISE NOTED IN THE PLANS.
- PAVEMENT MARKERS ARE TO BE SPACED ACCORDING TO THE ROADWAY STANDARD DRAWINGS.



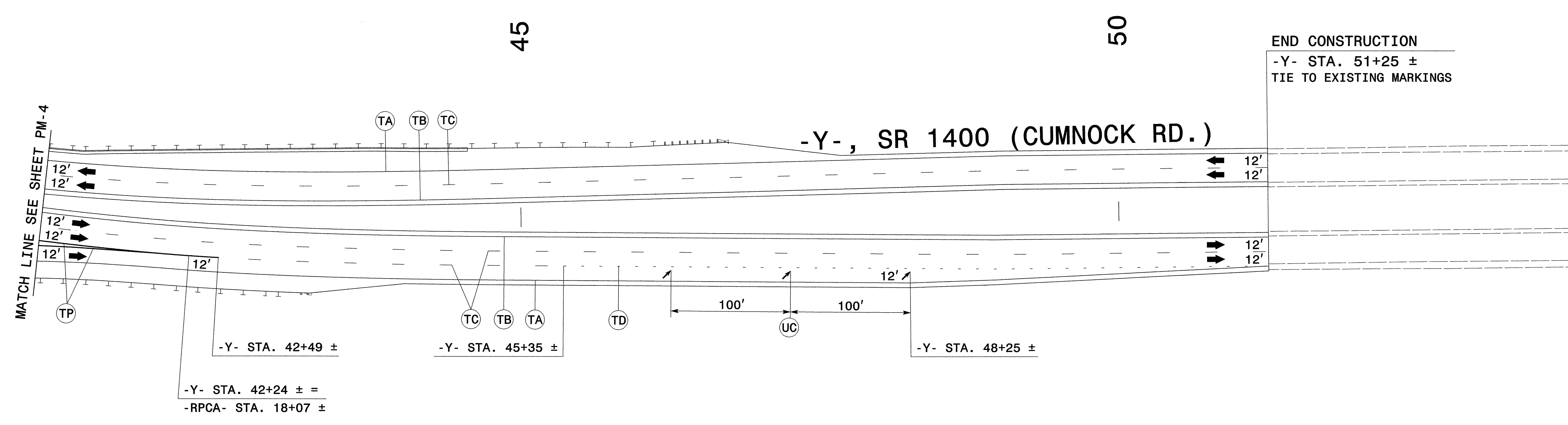
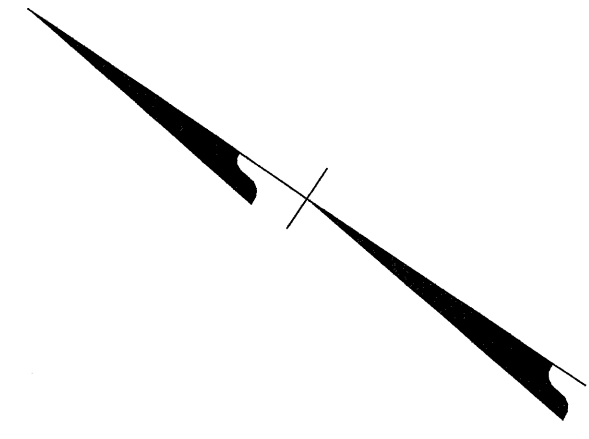
APPROVED: *Michael T. Kierma* DATE: 10-13-10

**SEAL**  
 NORTH CAROLINA PROFESSIONAL ENGINEER  
 SEAL 15876  
 MICHAEL T. KIERMA

**FINAL PAVEMENT MARKING PLAN**

SCALE: NONE		REVISIONS
DATE: 10-10		
DWG. BY: BLM		
DESIGN BY: MTR		
REVIEWED BY: MSA		CADD FILE





**NOTES:**

- SEE SHEET PM-1, FOR FINAL PAVEMENT MARKING SCHEDULE.
- PAVEMENT MARKINGS, SYMBOLS, AND CHARACTERS ARE TO BE MARKED ACCORDING TO ROADWAY STANDARD DRAWINGS UNLESS OTHERWISE NOTED IN THE PLANS.
- PAVEMENT MARKERS ARE TO BE SPACED ACCORDING TO THE ROADWAY STANDARD DRAWINGS.

APPROVED: <i>M. Williams</i> DATE: 10-13-10	<b>FINAL PAVEMENT MARKING PLAN</b>					
	SCALE: NONE					
	DATE: 10-10					
	DWG. BY: BLM					
	DESIGN BY: MTR					
REVIEWED BY: MSA	REVISIONS	<table border="1"> <tr> <td> </td> <td> </td> </tr> <tr> <td> </td> <td> </td> </tr> </table>				