

09/08/99

TIP PROJECT: U-3110B

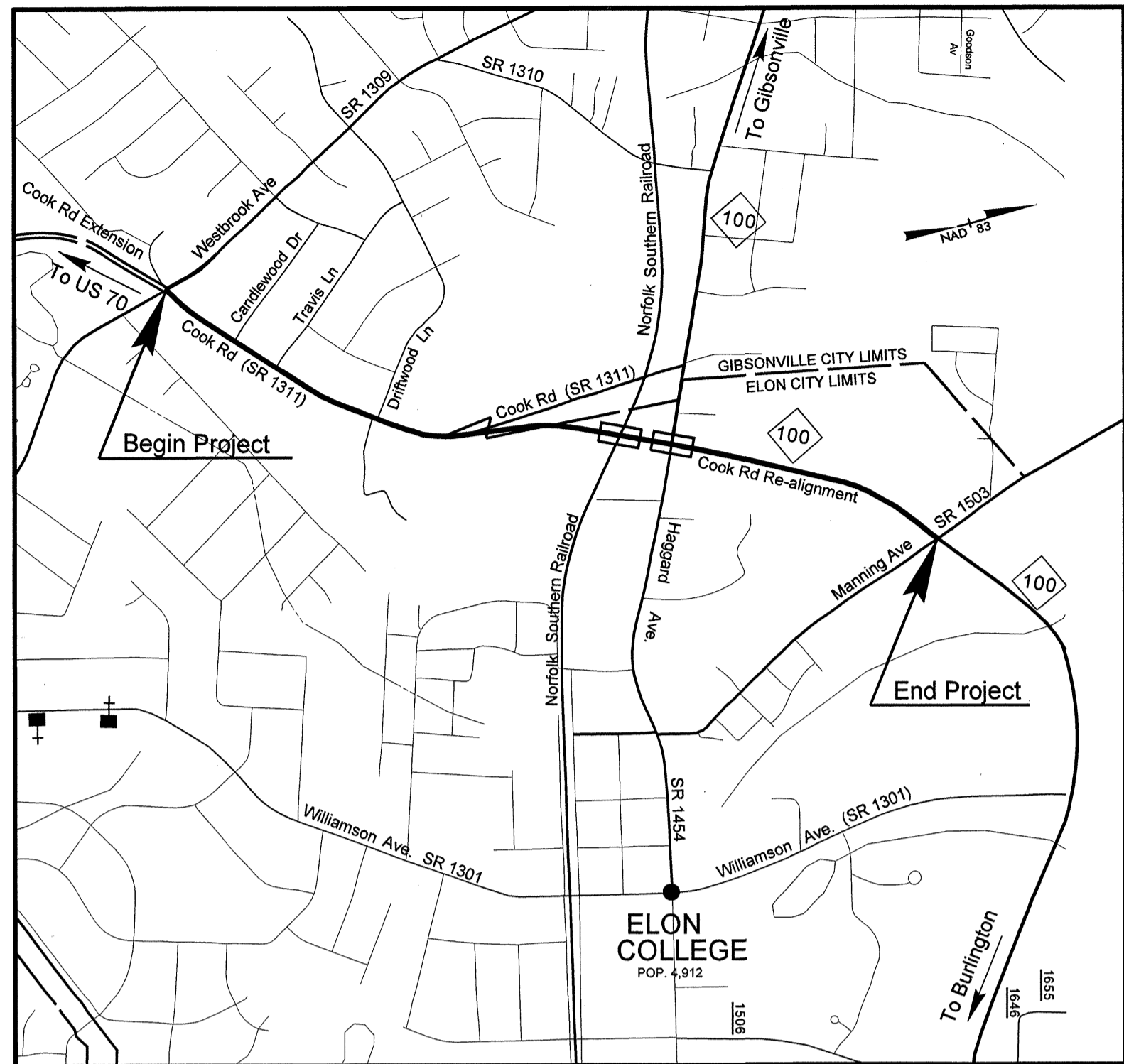
STATE OF NORTH CAROLINA
DIVISION OF HIGHWAYS

T.I.P. NO.	SHEET NO.
U-3110B	UC-1

UTILITY CONSTRUCTION PLANS ALAMANCE COUNTY

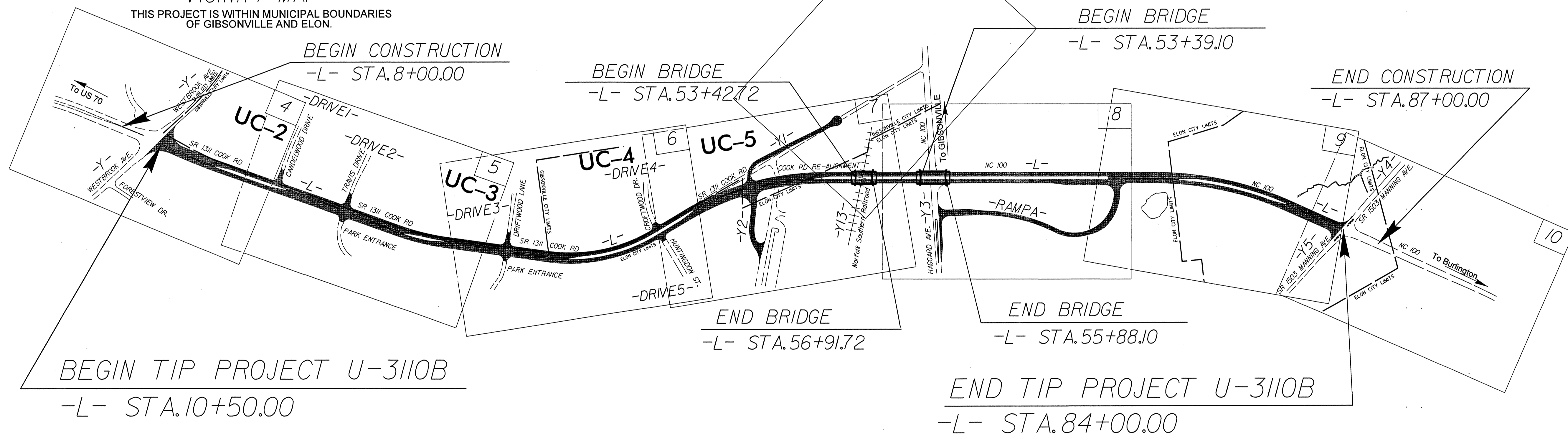
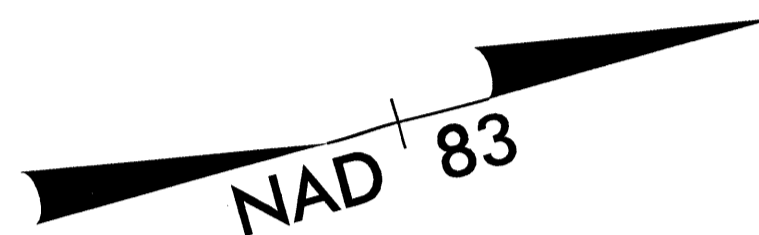
LOCATION: SR 1311 (COOK RD.) WIDENING AND EXTENSION
FROM SR 1909 (WESTBROOK AVE.) TO NC 100

TYPE OF WORK: UTILITIES RELOCATION



VICINITY MAP

THIS PROJECT IS WITHIN MUNICIPAL BOUNDARIES
OF GIBSONVILLE AND ELON.



BEGIN TIP PROJECT U-3110B
-L- STA. 10+50.00

END TIP PROJECT U-3110B
-L- STA. 84+00.00

INDEX OF SHEETS

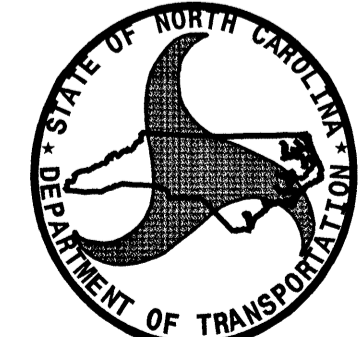
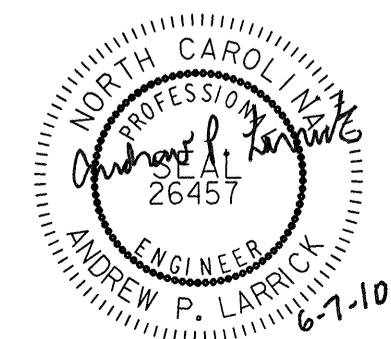
SHEET NO.	DESCRIPTION
UC-1	TITLE SHEET
UC-2 THRU UC-5	UTILITY CONSTRUCTION PLAN SHEETS
UC-6	DETAILS SHEET

WATER AND SEWER OWNERS ON PROJECT

WATER - TOWN OF ELON AND
TOWN OF GIBSONVILLE

SEWER - TOWN OF ELON AND
TOWN OF GIBSONVILLE

SEAL



DIVISION OF HIGHWAYS UTILITIES ENGINEERING SECTION

1591 MAIL SERVICES CENTER
RALEIGH NC 27699-1591
PHONE (919) 250-4128
FAX (919) 250-4119

Roger Worthington, P.E. UTILITIES SECTION ENGINEER
Ronald B. Wilkins, P.E. UTILITIES SQUAD LEADER PROJECT ENGINEER
James S. McKee, P.E. UTILITIES PROJECT DESIGNER

dmp

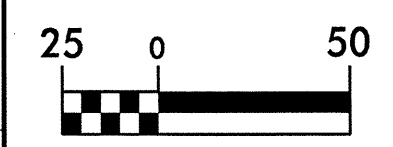
PREPARED IN THE OFFICE OF:
DAVIS-MARTIN-POWELL
AND ASSOCIATES, INC.

6415 OLD PLANK ROAD
HIGH POINT, NC 27265
PHONE (336) 886-4821
FAX (336) 886-4458

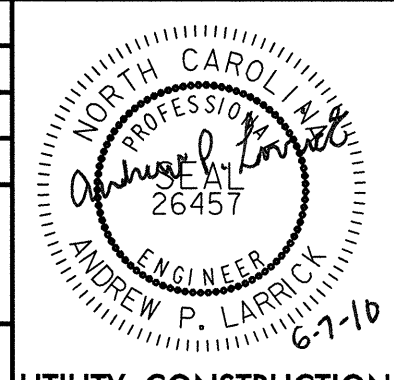
Randy McNeill, P.E. UTILITIES PROJECT MANAGER
Andy Larrick, P.E. UTILITIES PROJECT ENGINEER
Andy Larrick, P.E. UTILITIES PROJECT DESIGNER

\$\$\$\$\$SYTIME\$\$\$\$\$
\$\$\$\$\$DCN\$\$\$\$\$
\$\$\$\$\$SERNAME\$\$\$\$\$

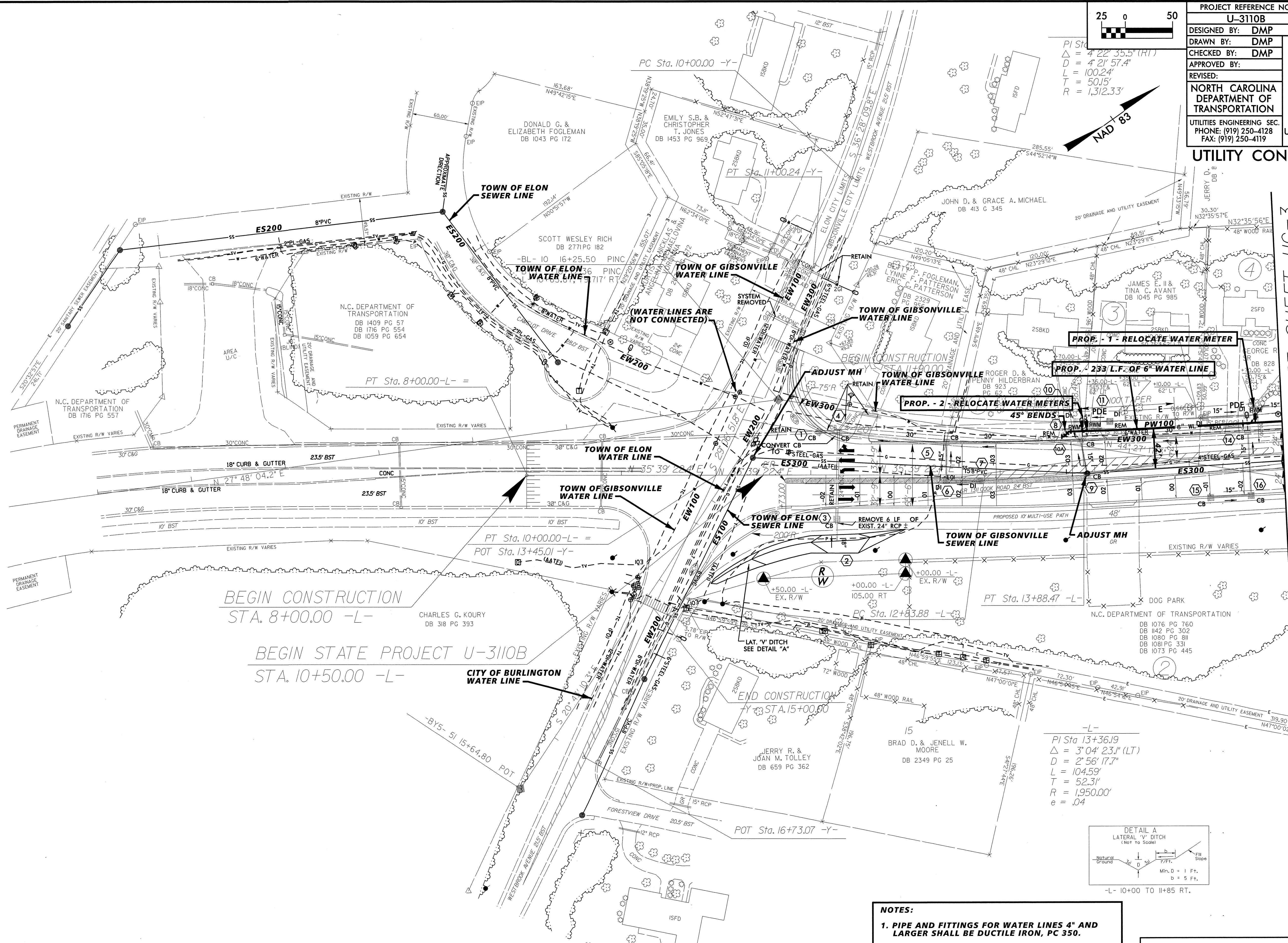
8/17/99



PROJECT REFERENCE NO.	SHEET NO.
U-3110B	UC-2
DESIGNED BY: DMP	
DRAWN BY: DMP	
CHECKED BY: DMP	
APPROVED BY:	
REVISED:	
NORTH CAROLINA DEPARTMENT OF TRANSPORTATION	
UTILITIES ENGINEERING SEC. PHONE: (919) 250-4128 FAX: (919) 250-4119	
UTILITY CONSTRUCTION PLANS ONLY	



UTILITY CONSTRUCTION



REVISIONS

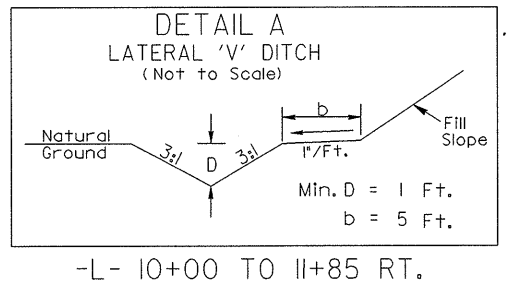
MATCHLINE -L- STA. 16+00 SEE SHEET UC-3

BEGIN CONSTRUCTION
STA. 8+00.00 -L-

BEGIN STATE PROJECT U-3110B
STA. 10+50.00 -L-

PI Sta. 10+00.00
 $\Delta = 4' 22'' 35.5'' (RT)$
 $D = 4' 21'' 57.4''$
 $L = 100.24'$
 $T = 50.15'$
 $R = 1,312.33'$

PI Sta. 13+36.19
 $\Delta = 3' 04'' 23.1'' (LT)$
 $D = 2' 56'' 17.7''$
 $L = 104.59'$
 $T = 52.31'$
 $R = 1,950.00'$
 $e = .04$



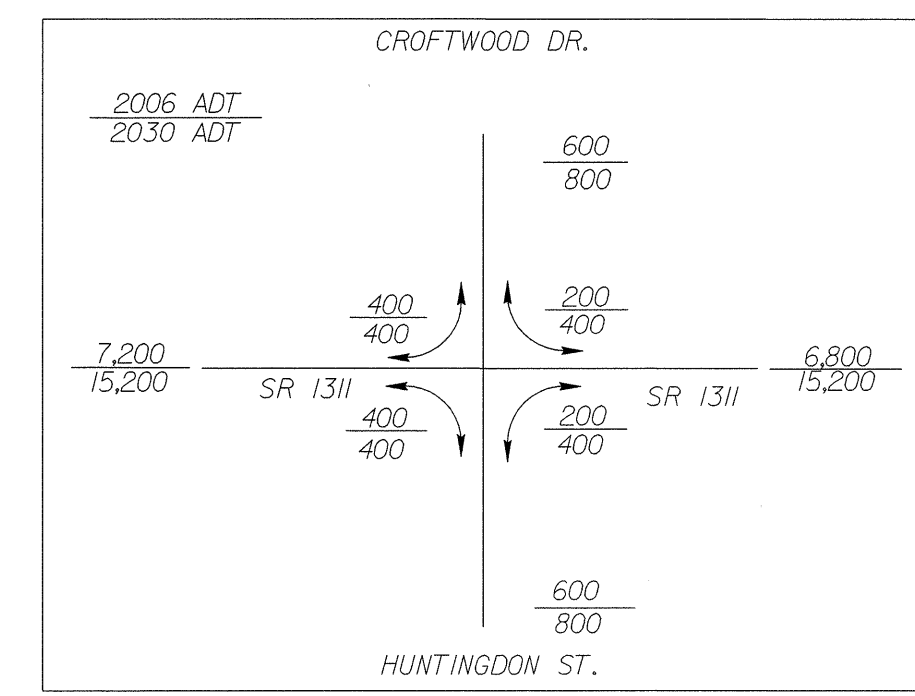
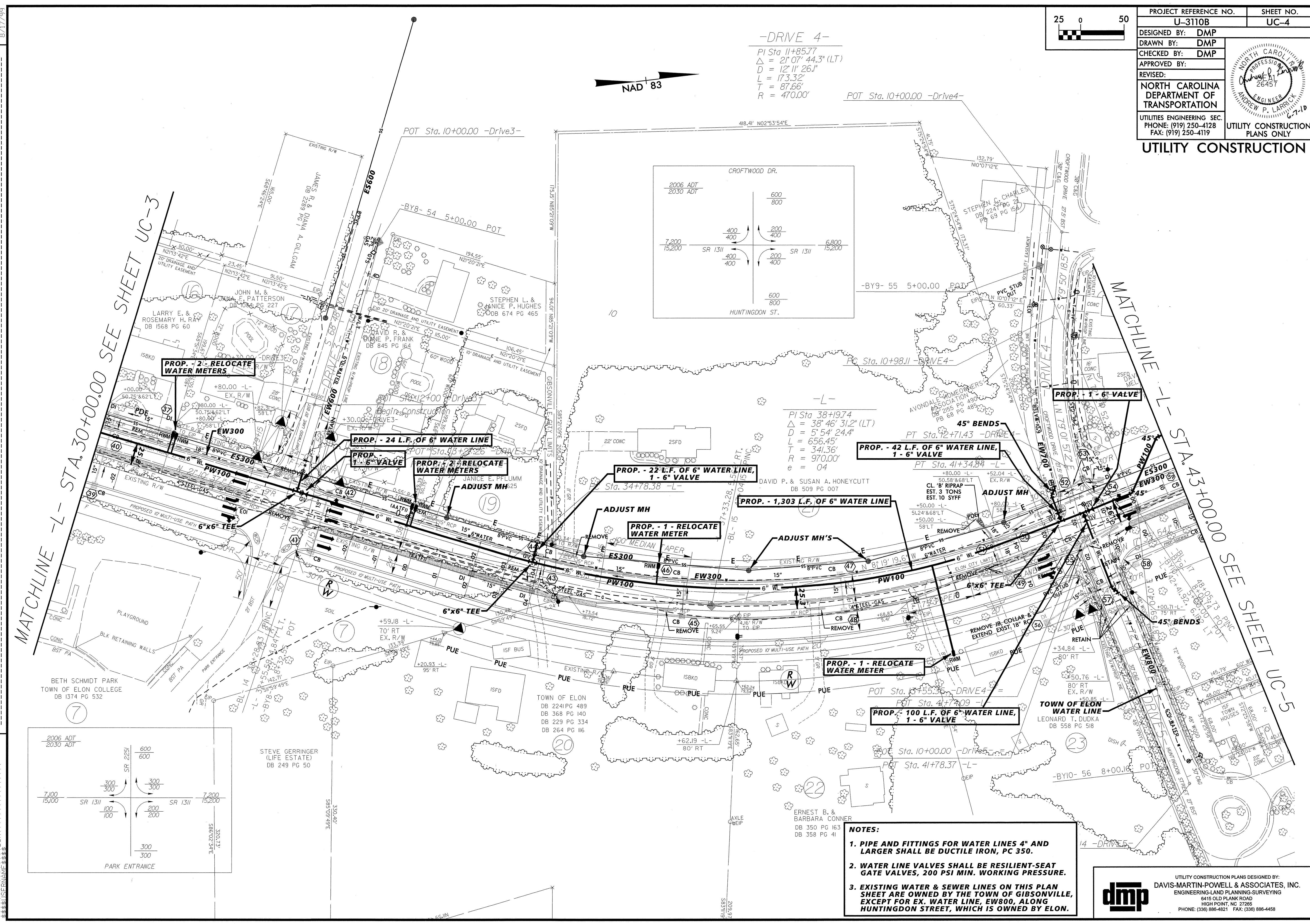
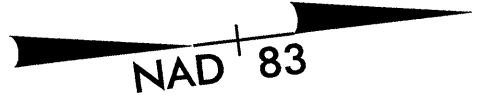
- NOTES:**
1. PIPE AND FITTINGS FOR WATER LINES 4" AND LARGER SHALL BE DUCTILE IRON, PC 350.
 2. WATER LINE VALVES SHALL BE RESILIENT-SEAT GATE VALVES, 200 PSI MIN. WORKING PRESSURE.
 3. OWNERS OF EXISTING WATER AND SEWER LINES ON THIS PLAN SHEET ARE INDICATED ABOVE.



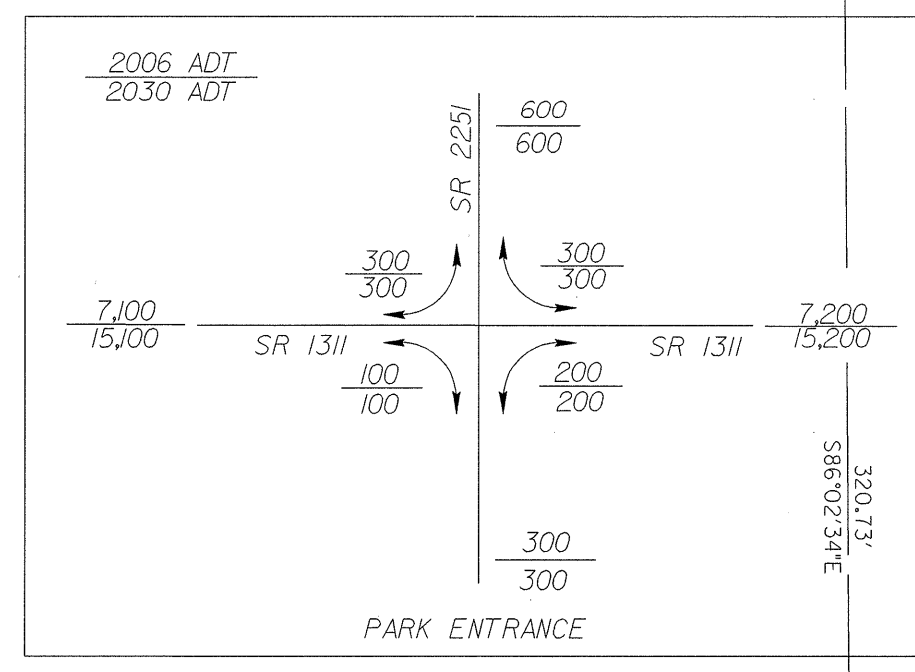
PROJECT REFERENCE NO.	SHEET NO.
U-3110B	UC-4
DESIGNED BY: DMP	
DRAWN BY: DMP	
CHECKED BY: DMP	
APPROVED BY:	
REVISED:	
NORTH CAROLINA DEPARTMENT OF UTILITIES ENGINEERING SEC. PHONE: (919) 250-4128 FAX: (919) 250-4119	
UTILITY CONSTRUCTION PLANS ONLY	

-DRIVE 4-

PI Sta 11+85.77
 $\Delta = 21' 07" 44.3" (LT)$
 $D = 12' 11" 26.1"$
 $L = 173.32'$
 $T = 87.66'$
 $R = 470.00'$



-L-
 PI Sta 38+97.74
 $\Delta = 38' 46" 31.2" (LT)$
 $D = 5' 54" 24.4"$
 $L = 656.45'$
 $T = 341.36'$
 $R = 970.00'$
 $e = 04$

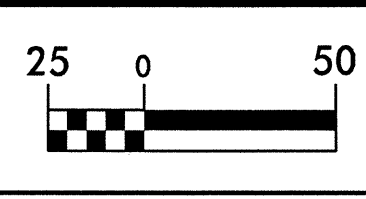
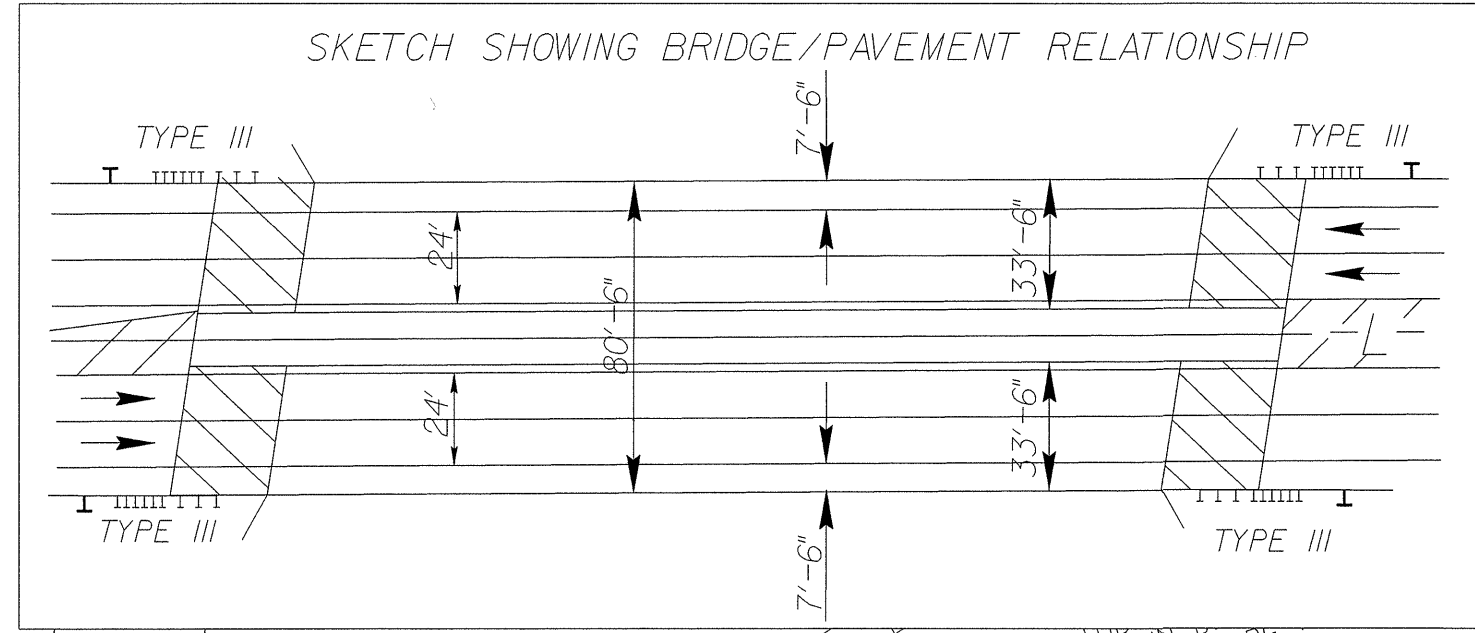


- NOTES:**
- PIPE AND FITTINGS FOR WATER LINES 4" AND LARGER SHALL BE DUCTILE IRON, PC 350.
 - WATER LINE VALVES SHALL BE RESILIENT-SEAT GATE VALVES, 200 PSI MIN. WORKING PRESSURE.
 - EXISTING WATER & SEWER LINES ON THIS PLAN SHEET ARE OWNED BY THE TOWN OF GIBSONVILLE, EXCEPT FOR EX. WATER LINE, EW800, ALONG HUNTINGDON STREET, WHICH IS OWNED BY ELON.

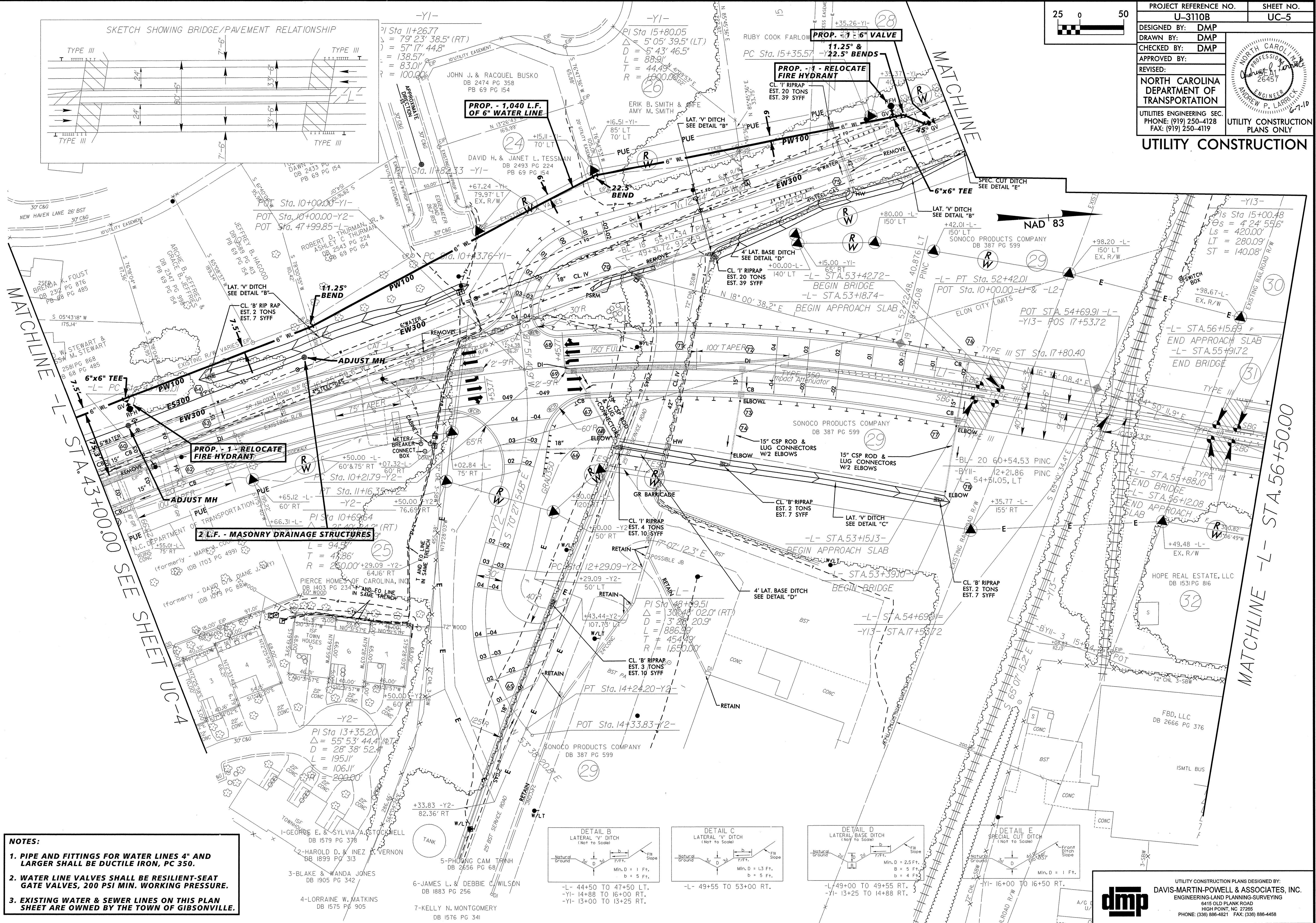
REVISIONS

8/17/99

8/17/99

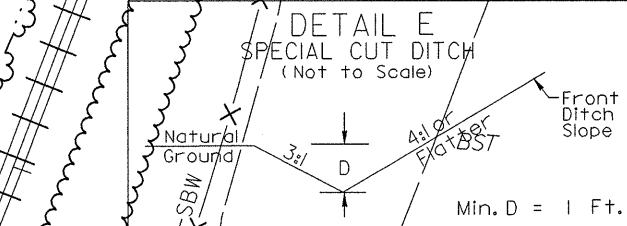
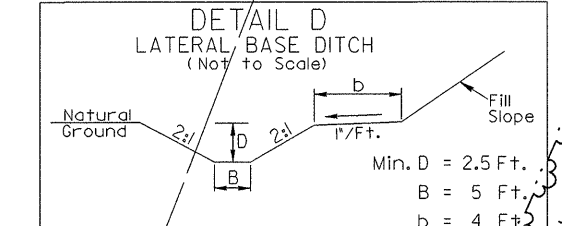
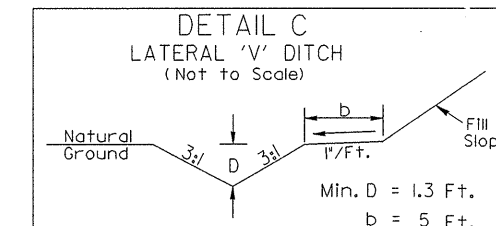
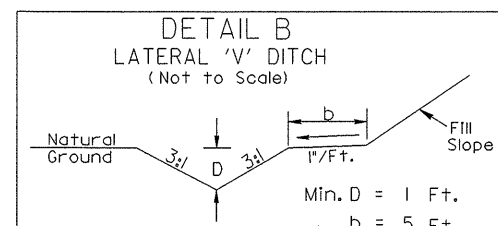


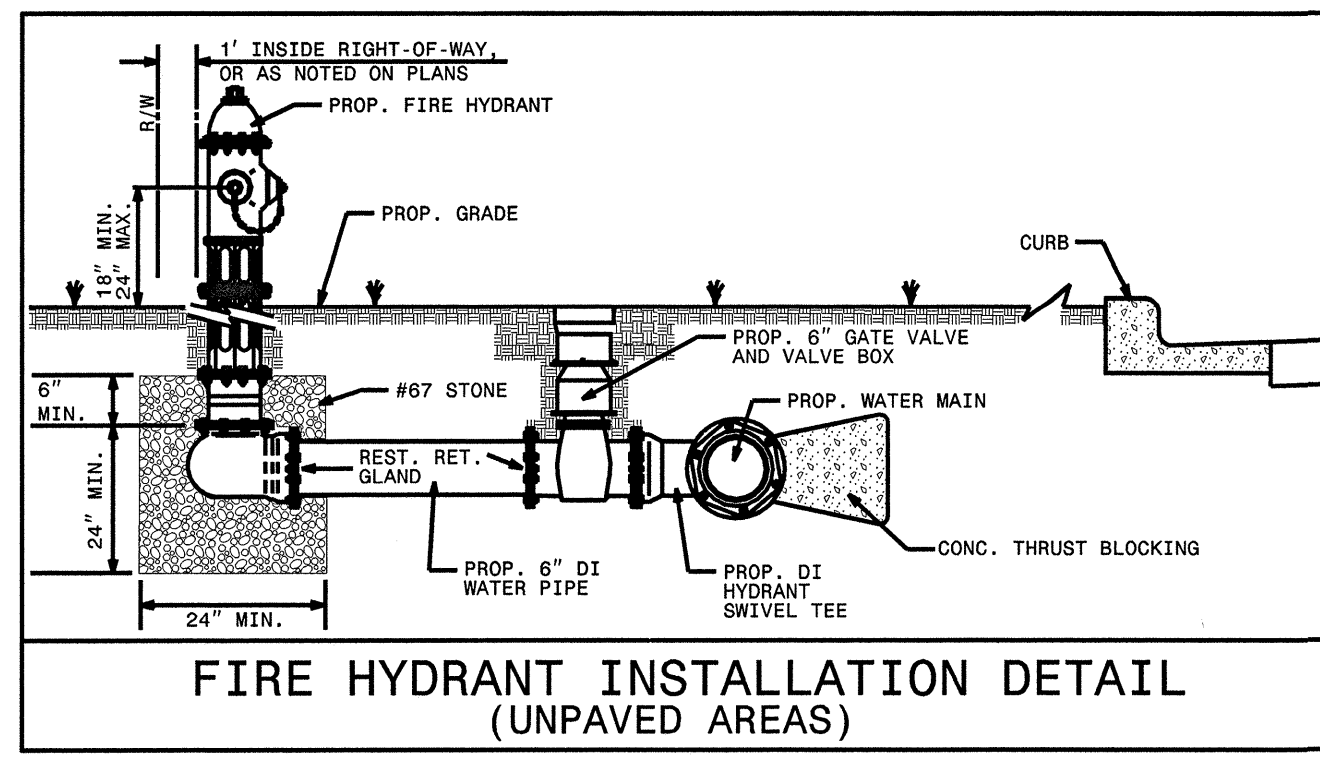
PROJECT REFERENCE NO. U-3110B	SHEET NO. UC-5
DESIGNED BY: DMP	
DRAWN BY: DMP	
CHECKED BY: DMP	
APPROVED BY:	
REVISED:	
NORTH CAROLINA DEPARTMENT OF UTILITIES ENGINEERING SEC. PHONE: (919) 250-4128 FAX: (919) 250-4119	
UTILITY CONSTRUCTION PLANS ONLY	



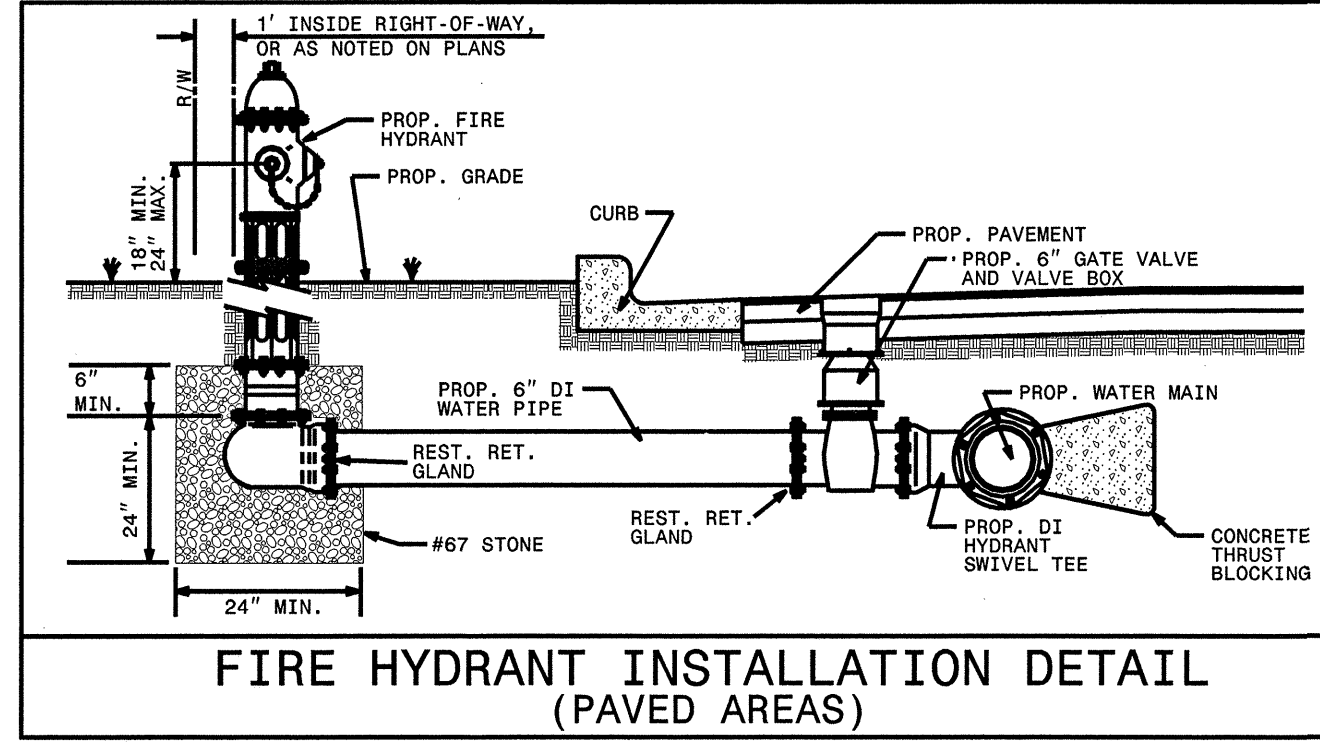
REVISIONS

- NOTES:**
- PIPE AND FITTINGS FOR WATER LINES 4" AND LARGER SHALL BE DUCTILE IRON, PC 350.**
 - WATER LINE VALVES SHALL BE RESILIENT-SEAT GATE VALVES, 200 PSI MIN. WORKING PRESSURE.**
 - EXISTING WATER & SEWER LINES ON THIS PLAN SHEET ARE OWNED BY THE TOWN OF GIBSONVILLE.**

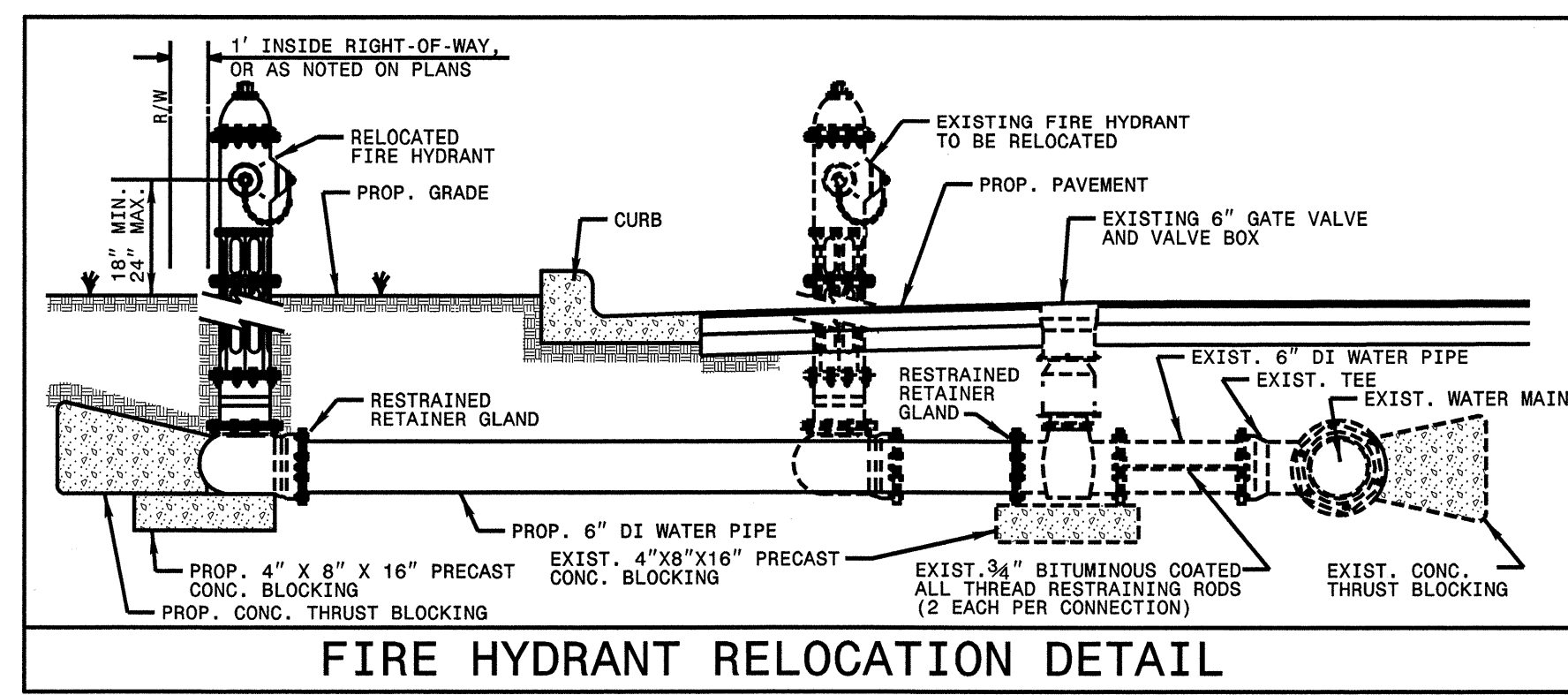




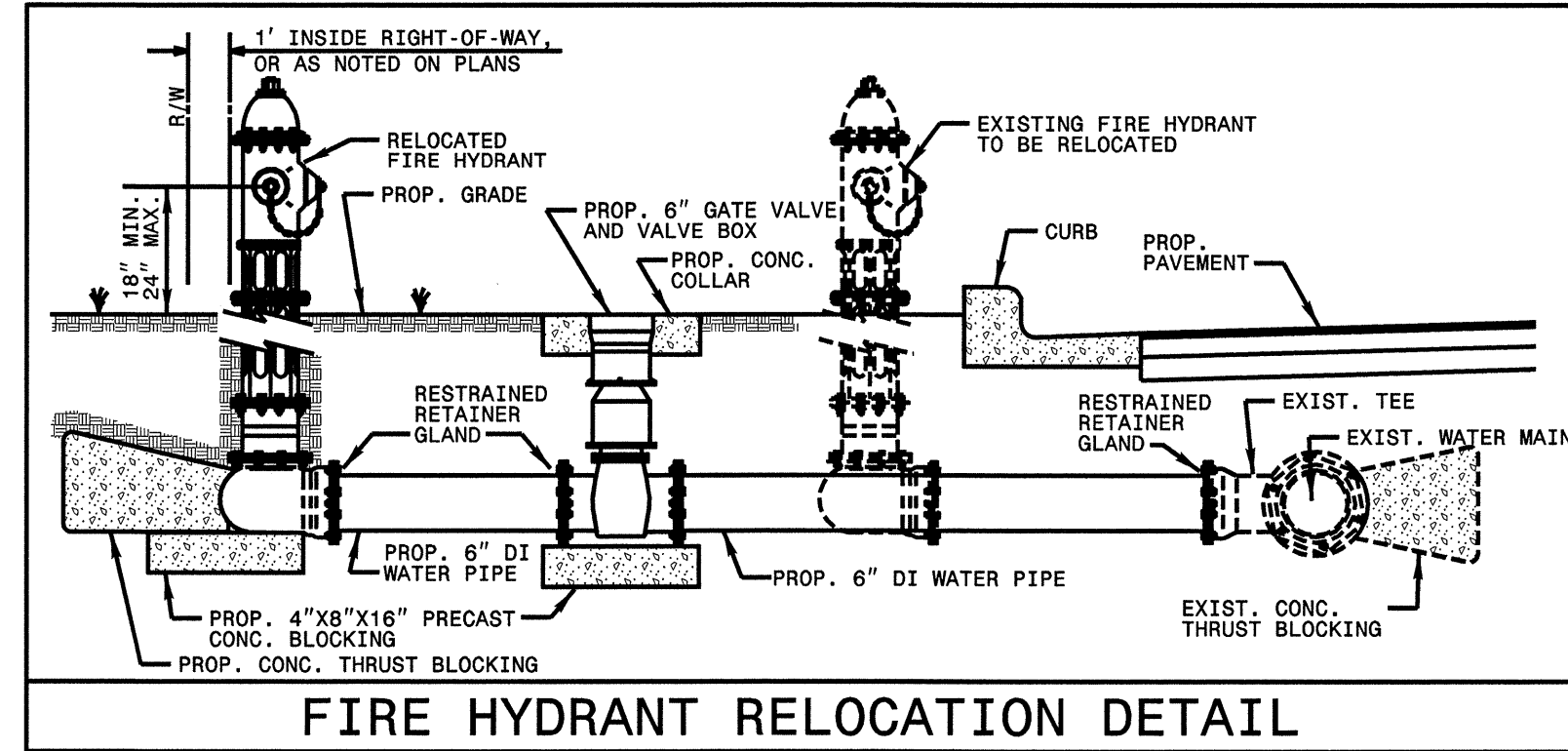
FIRE HYDRANT INSTALLATION DETAIL (UNPAVED AREAS)



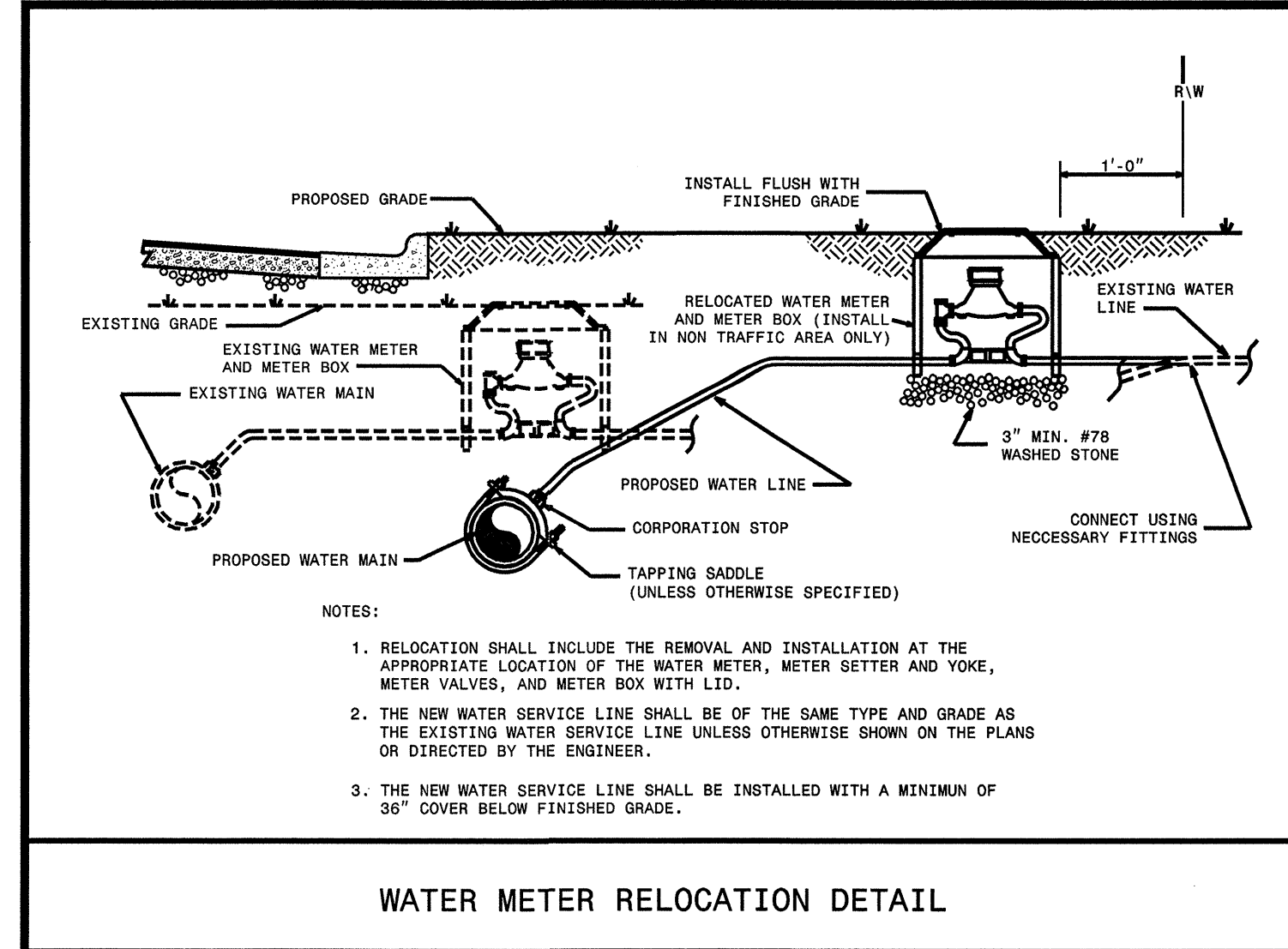
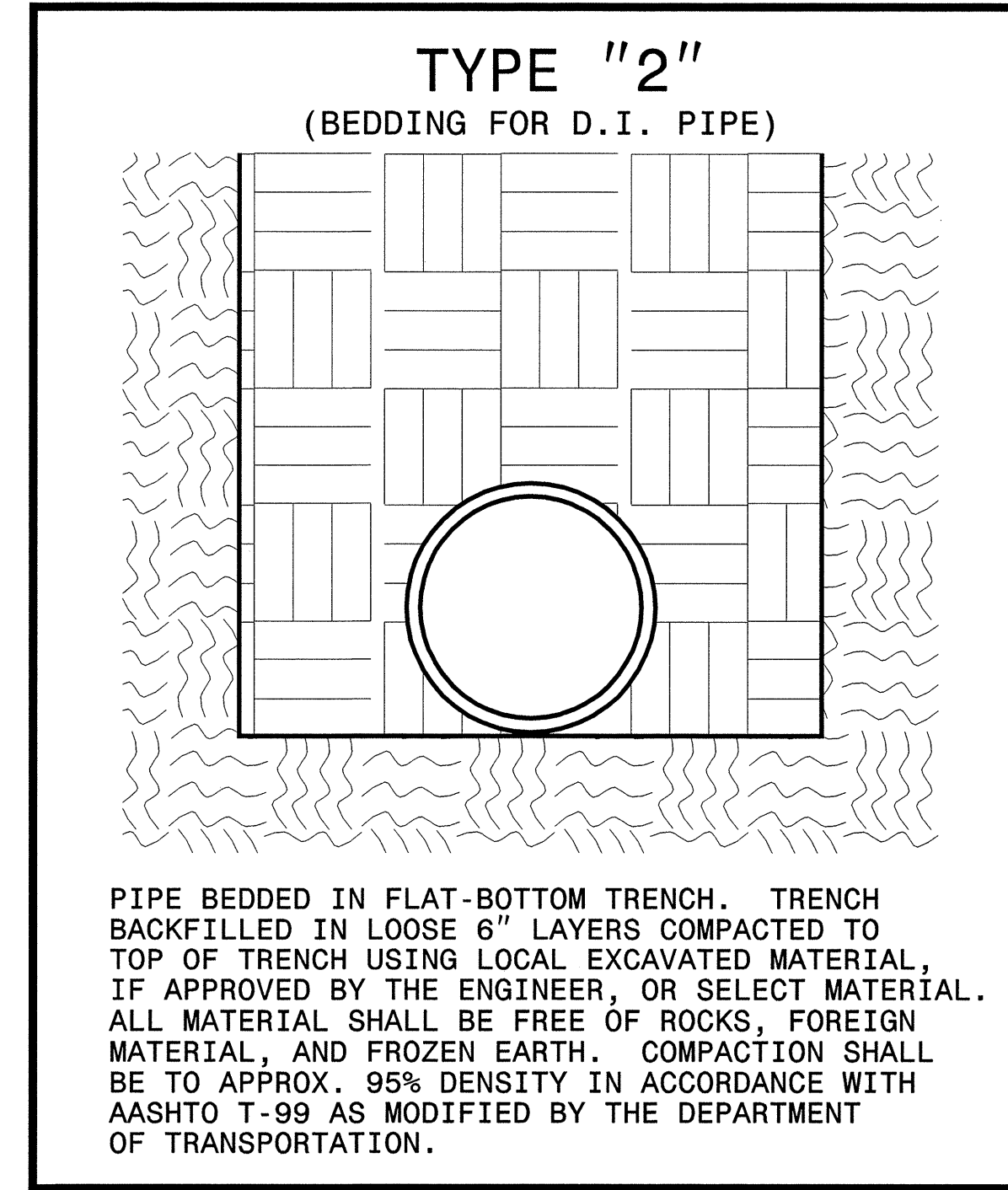
FIRE HYDRANT INSTALLATION DETAIL (PAVED AREAS)



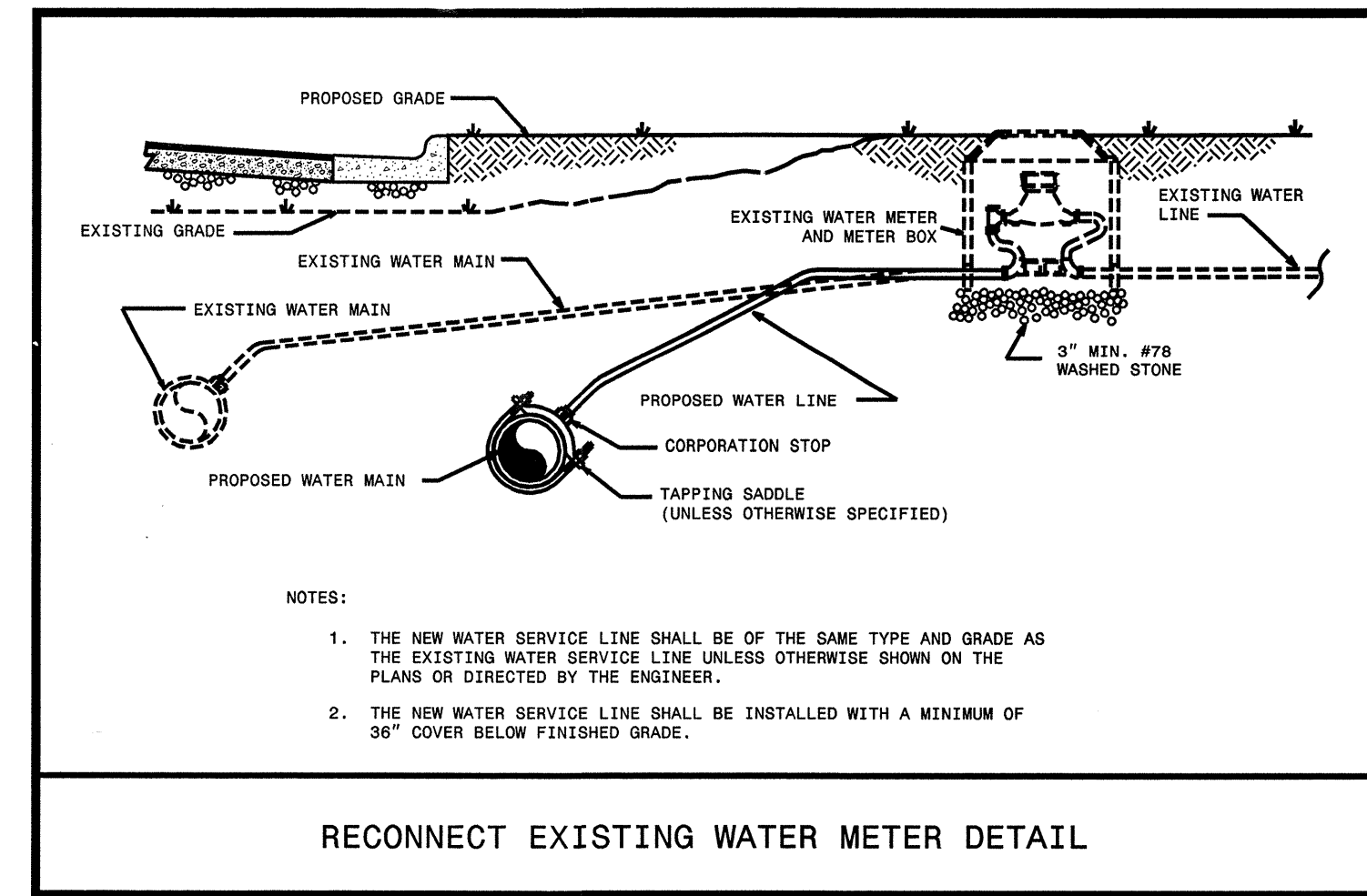
FIRE HYDRANT RELOCATION DETAIL



FIRE HYDRANT RELOCATION DETAIL



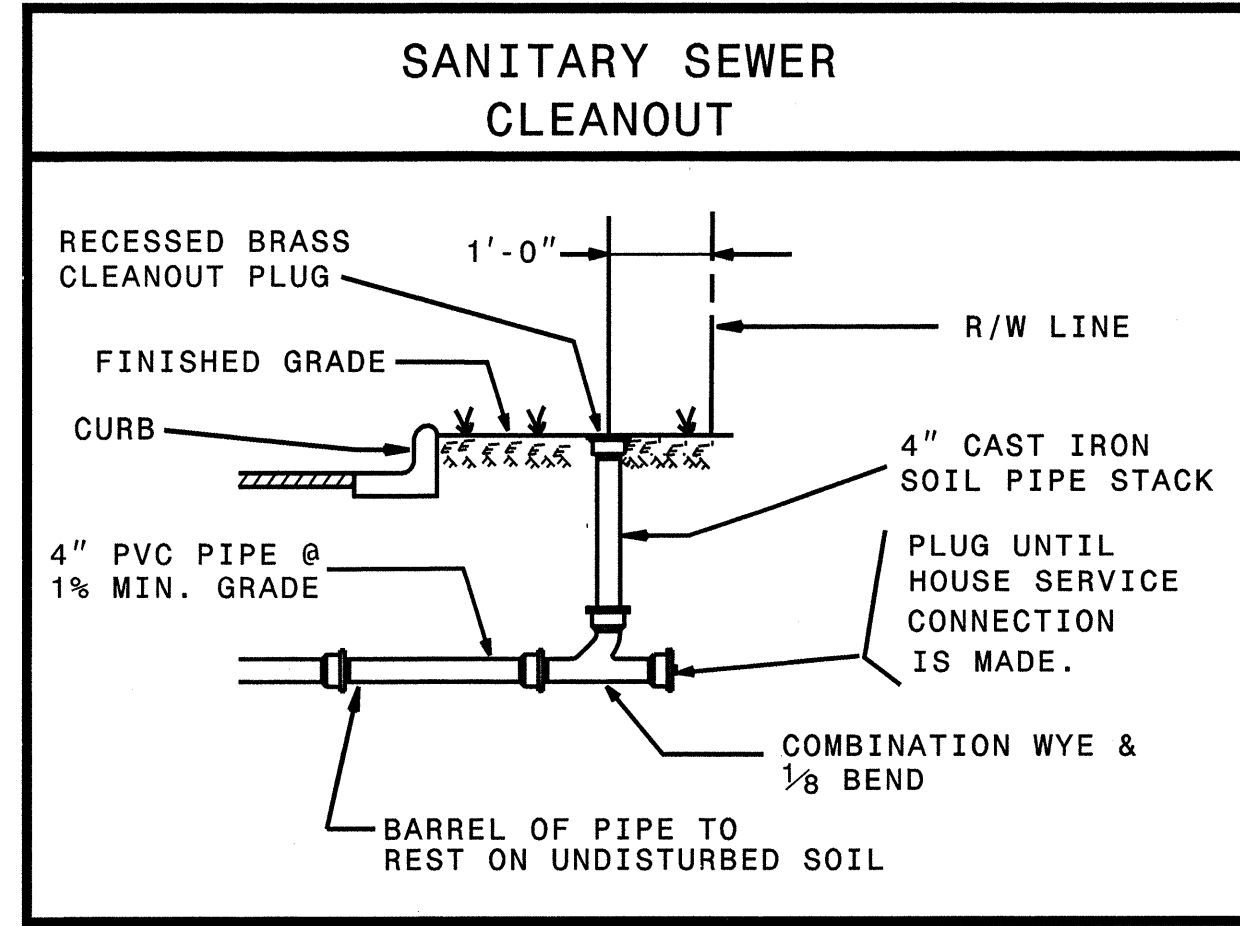
WATER METER RELOCATION DETAIL



RECONNECT EXISTING WATER METER DETAIL

MAXIMUM TRENCH WIDTH AT TOP OF PIPE

NOMINAL PIPE SIZE (INCHES)	TRENCH WIDTH (INCHES)	NOMINAL PIPE SIZE (INCHES)	TRENCH WIDTH (INCHES)
4	28	20	44
6	30	24	48
8	32	30	54
10	34	36	60
12	36	42	66
14	38	48	72
16	40	54	78
18	42		



THE CONTRACTOR SHALL REPLACE ANY DAMAGED SEWER LATERALS AND/OR CLEANOUTS AS DIRECTED BY THE ENGINEER. THE NECESSARY QUANTITIES HAVE BEEN ADDED TO THE CONTRACT TO FACILITATE THIS PROCEDURE.

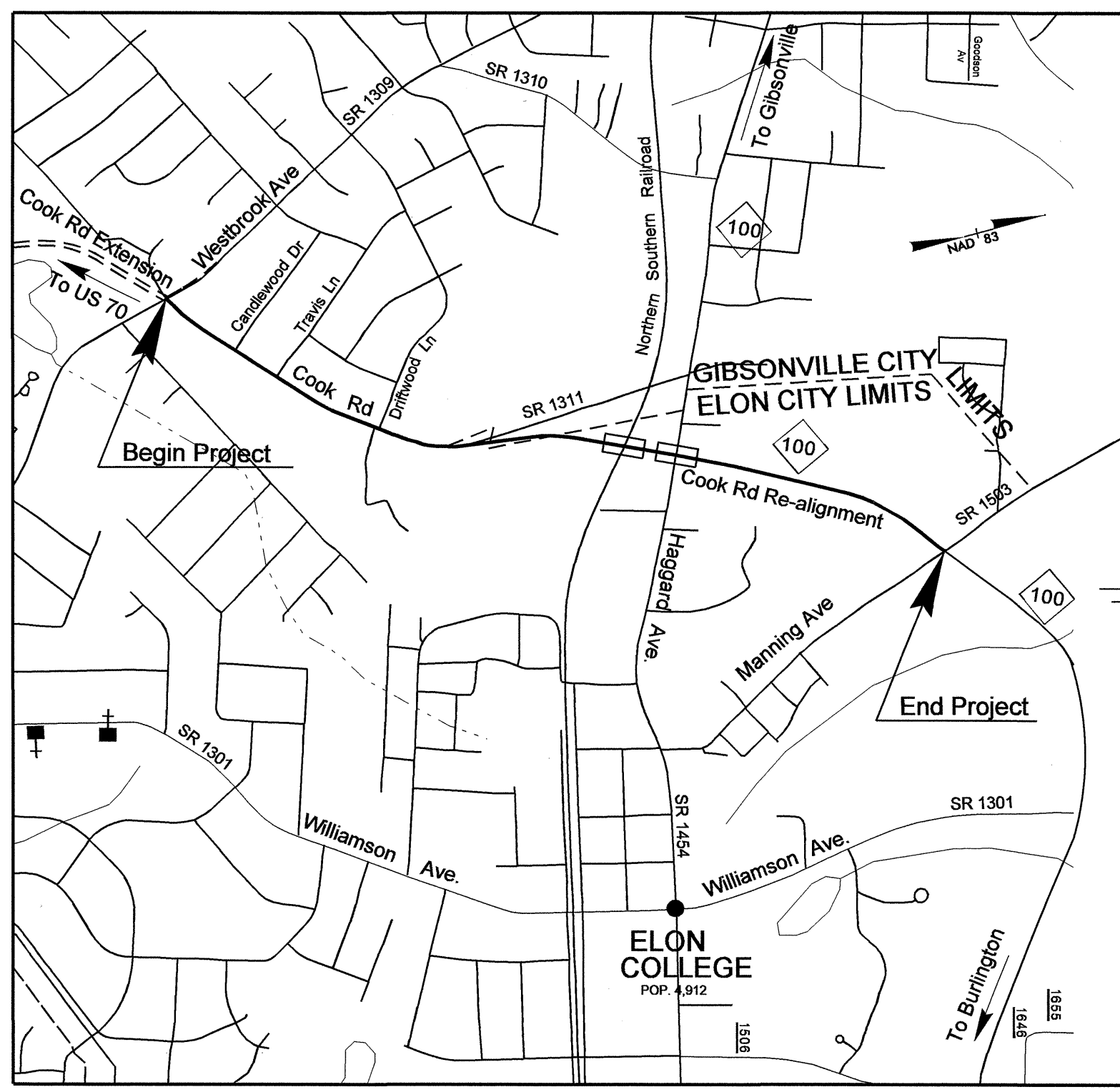
STATE OF NORTH CAROLINA
DIVISION OF HIGHWAYS

**UTILITIES BY OTHERS PLANS
ALAMANCE COUNTY**

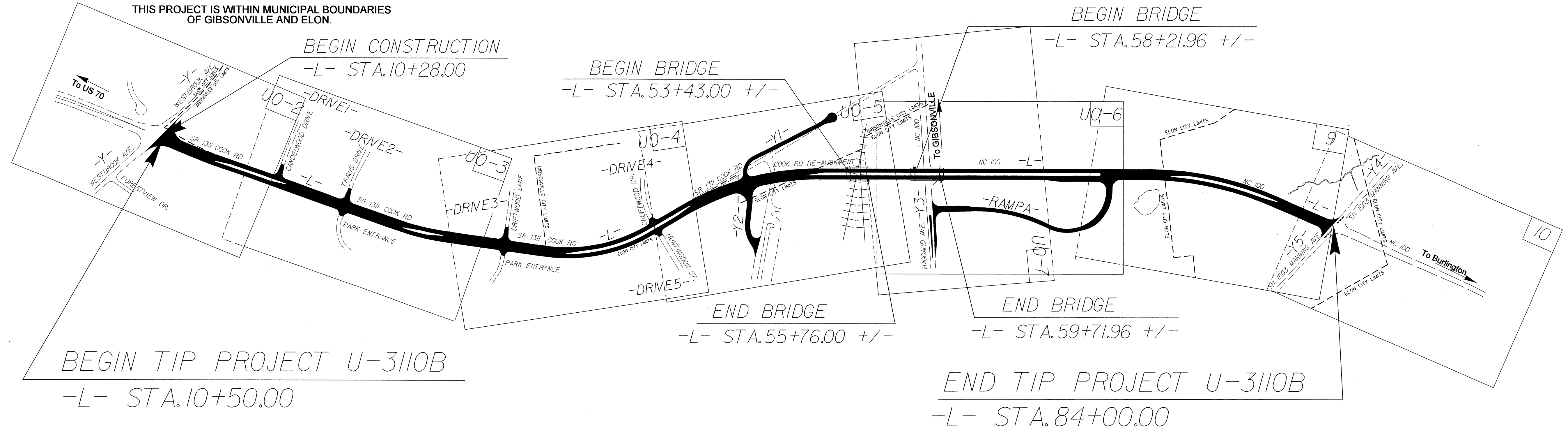
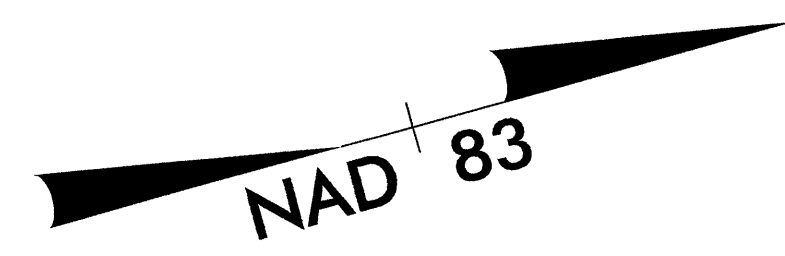
**LOCATION: SR 1311(COOK RD.) WIDENING AND EXTENSION
FROM SR 1909 (WESTBROOK AVE.) TO NC 100**

TYPE OF WORK: GRADING, PAVING, DRAINAGE AND STRUCTURES

TIP PROJECT: U-3110B

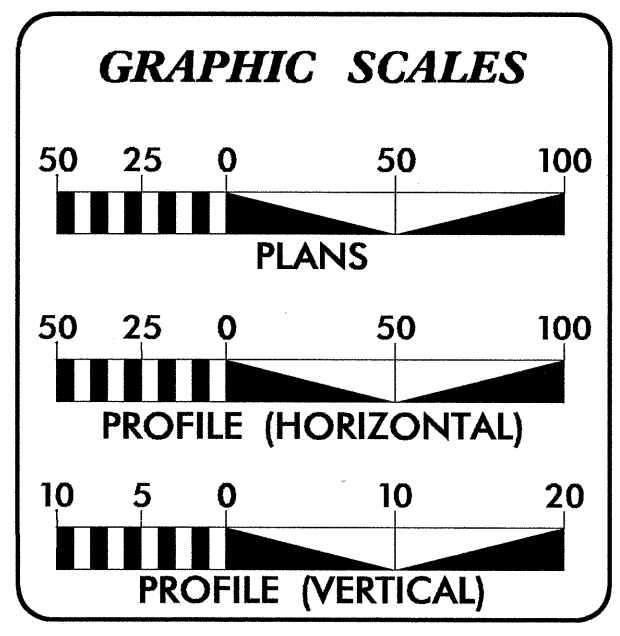


VICINITY MAP



THIS PROJECT IS WITHIN MUNICIPAL BOUNDARIES OF GIBSONVILLE AND ELON.

07-JUN-2010 16:08
R:\Utilities\rgy\U-3110B\U-3110B_U1_Title_U01.psh.dgn
\$\$\$\$\$USERNAME\$\$\$\$\$

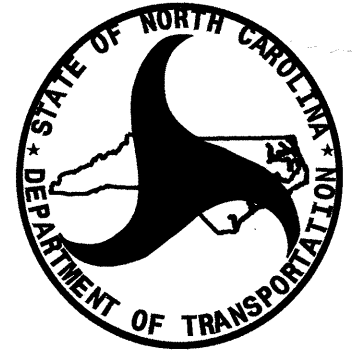


INDEX OF SHEETS

SHEET NO.	DESCRIPTION
UO-1	TITLE SHEET
UO-2 THRU UO-7	UTILITY BY OTHERS PLAN SHEETS

UTILITY OWNERS ON PROJECT

- POWER : DUKE ENERGY CORPORATION
- TELEPHONE : CENTURYLINK
- CABLE : TIME WARNER CABLE
- GAS : PIEDMONT NATURAL GAS COMPANY



PREPARED IN THE OFFICE OF:
**DIVISION OF HIGHWAYS
UTILITIES ENGINEERING SECTION**

1591 MAIL SERVICES CENTER
RALEIGH NC 27699-1591
PHONE (919) 250-4128
FAX (919) 250-4119

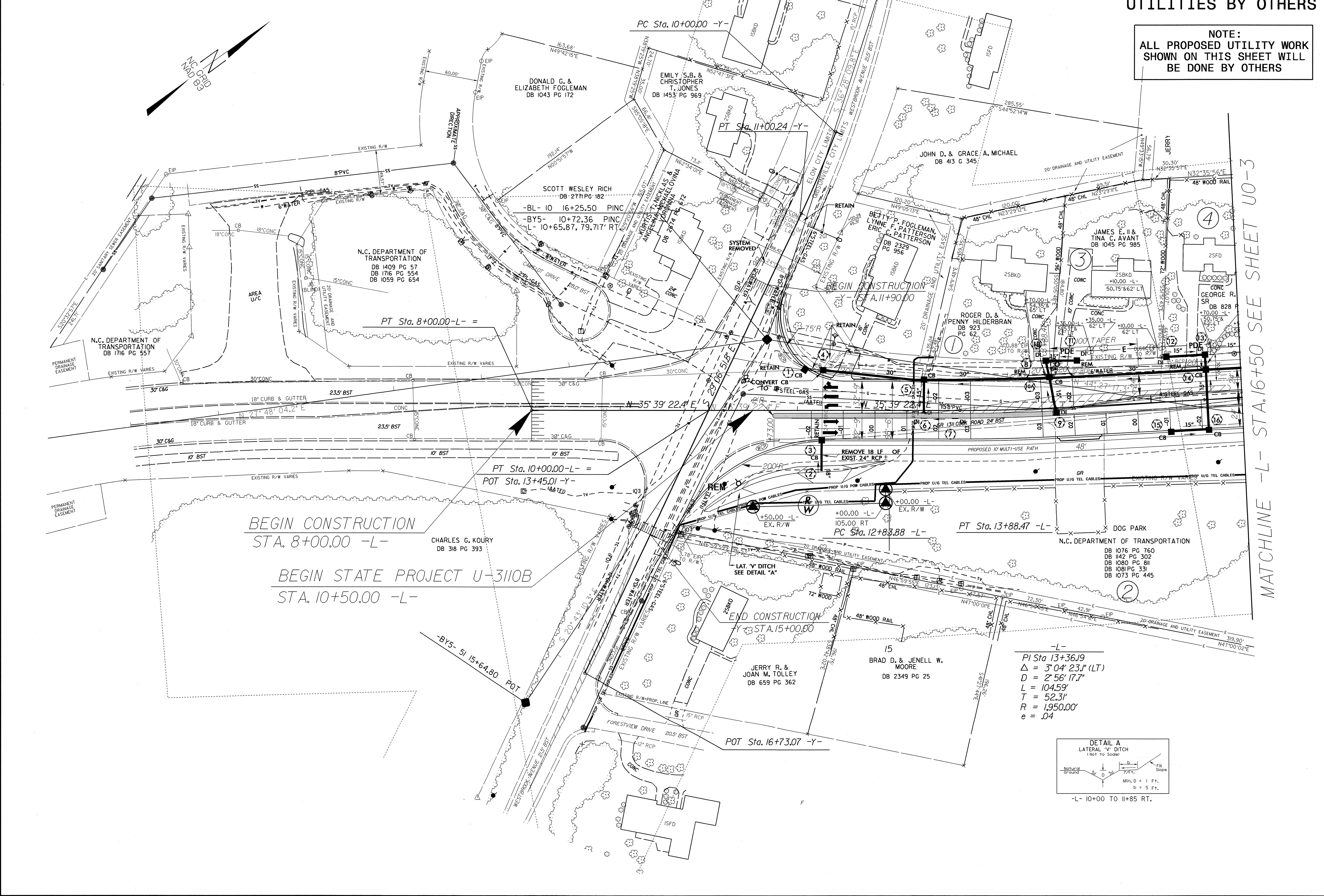
Roger Worthington, P.E.	UTILITIES SECTION ENGINEER
R.B. Wilkins, P.E.	UTILITIES SQUAD LEADER PROJECT ENGINEER
Jong-Tae Yoon	UTILITIES PROJECT DESIGNER

UTILITIES BY OTHERS

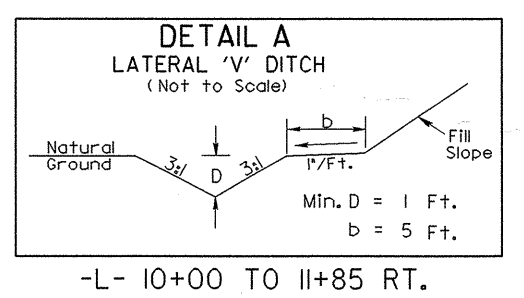
NOTE:
ALL PROPOSED UTILITY WORK
SHOWN ON THIS SHEET WILL
BE DONE BY OTHERS

$R = 1,312.33'$

5/14/99



-L-
 $PI Sta. 13+36.19$
 $\Delta = 3' 04' 23.1'' (LT)$
 $D = 2' 56' 17.7''$
 $L = 104.59'$
 $T = 52.31'$
 $R = 1,950.00'$
 $e = .04$

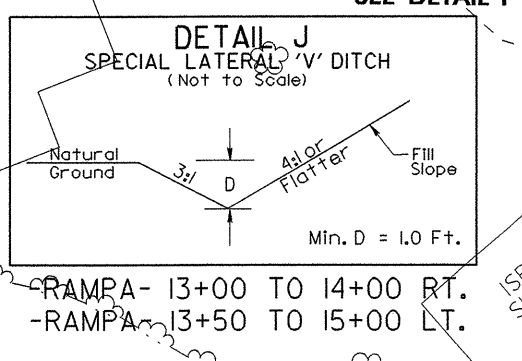
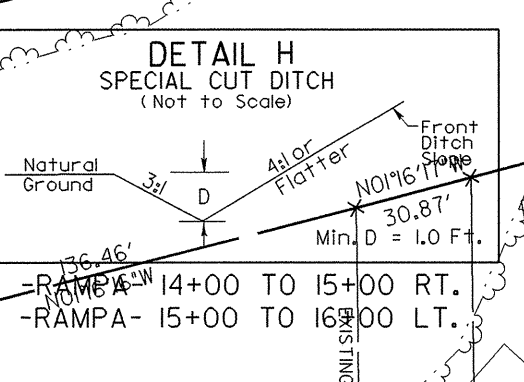
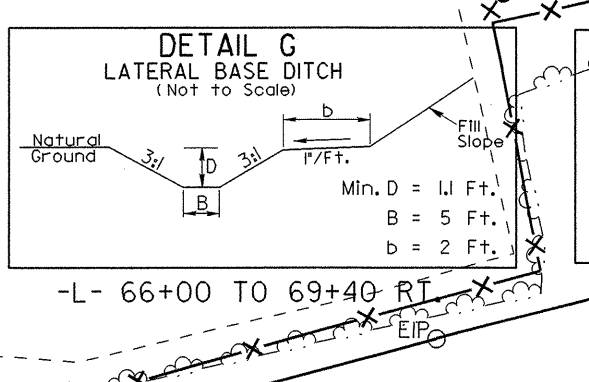
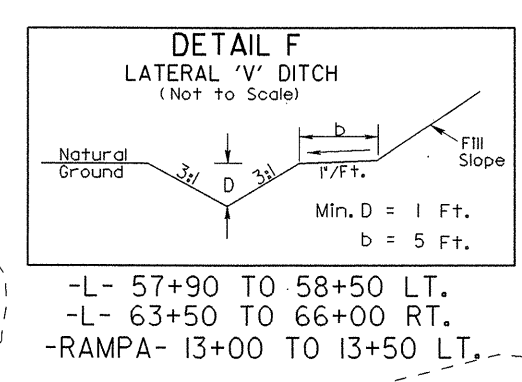
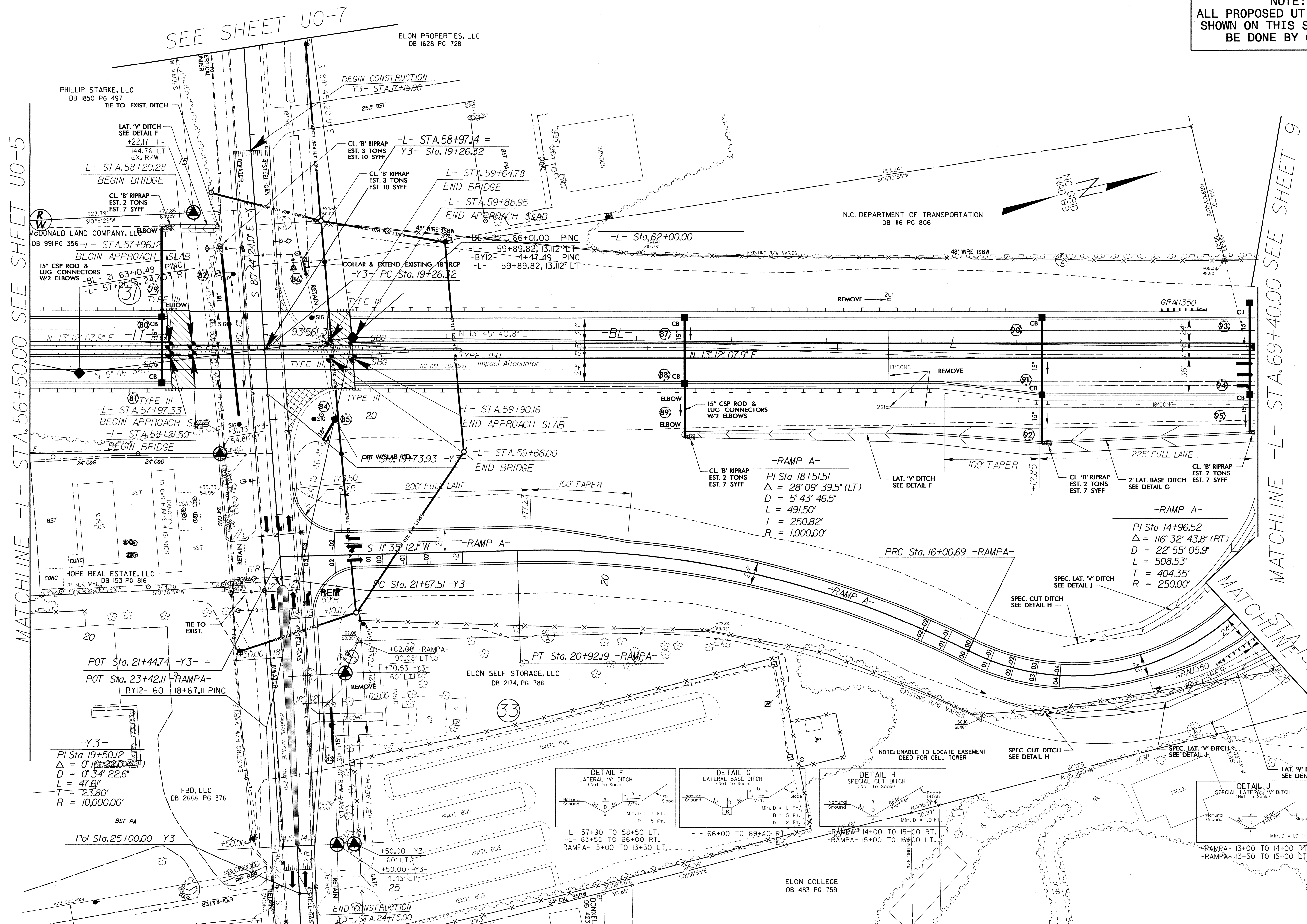


-L- 10+00 TO 11+85 RT.

MATCHLINE -L- STA. 16+50 SEE SHEET U0-3

UTILITIES BY OTHERS

NOTE:
ALL PROPOSED UTILITY WORK
SHOWN ON THIS SHEET WILL
BE DONE BY OTHERS

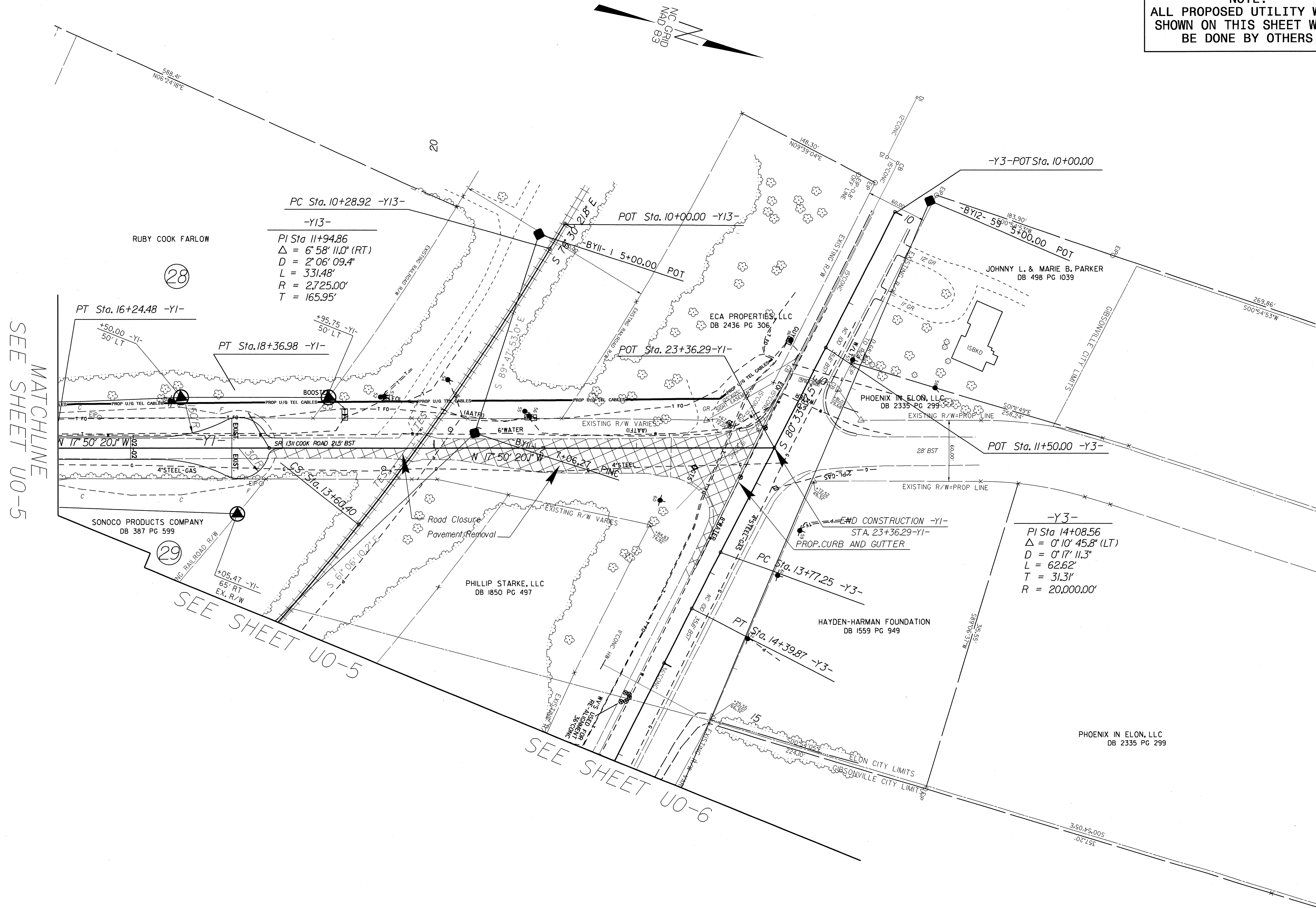


5/14/99

RAU 07 JUN 2010 09:07 U-30110B-U48-U06-psht.dgn

UTILITIES BY OTHERS

NOTE:
ALL PROPOSED UTILITY WORK
SHOWN ON THIS SHEET WILL
BE DONE BY OTHERS



MATCHLINE
SEE SHEET U0-5

SEE SHEET U0-5

SEE SHEET U0-6

5/14/09

R:\07-JUN-2009\0908
R:\Utilities\Road\U0-3110B.U+11.U07_psh.dgn