

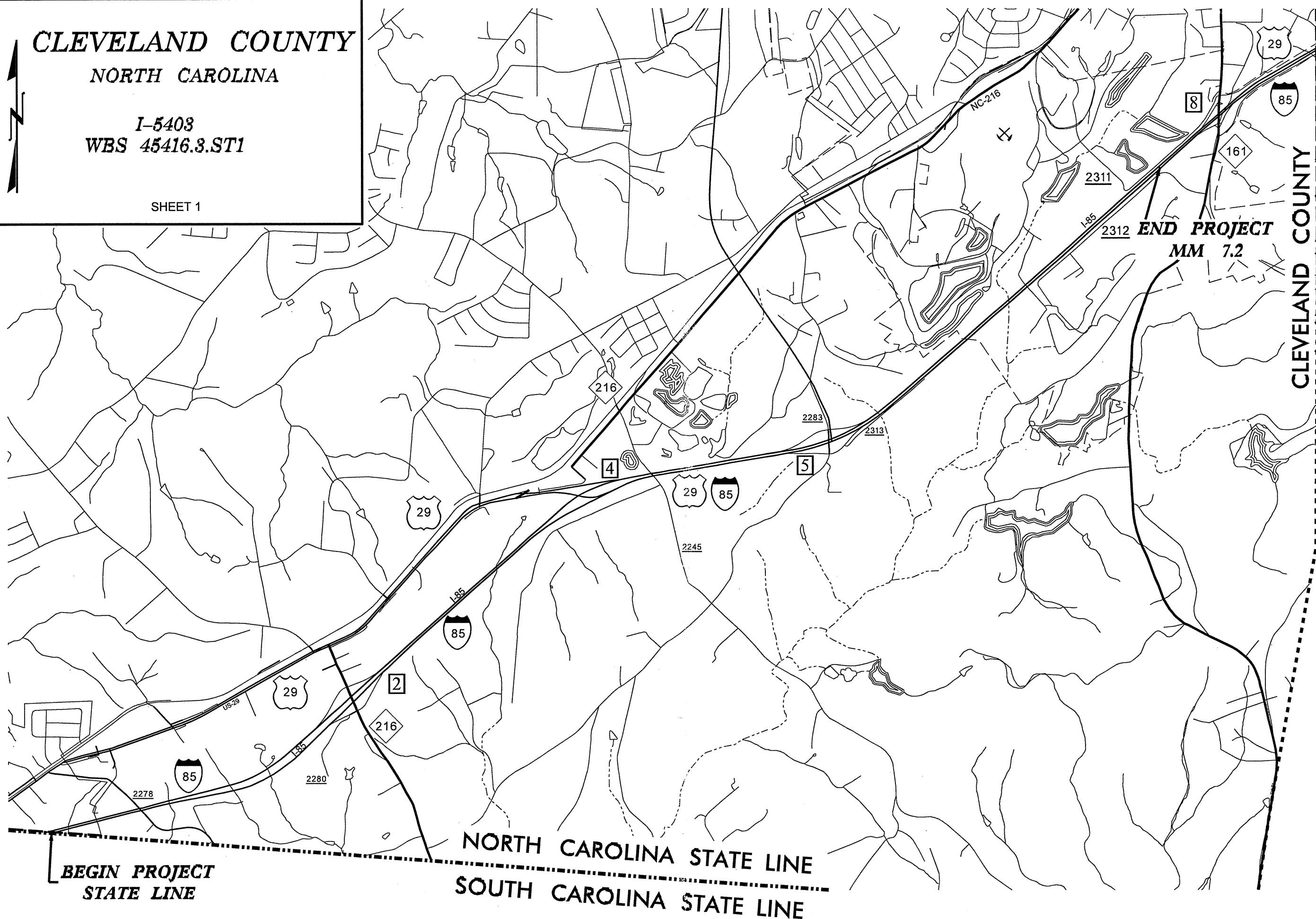
CLEVELAND COUNTY

NORTH CAROLINA

I-5403

WBS 45416.3.ST1

SHEET 1



CLEVELAND COUNTY
GASTON COUNTY

END PROJECT
MM 7.2

BEGIN PROJECT
STATE LINE

NORTH CAROLINA STATE LINE
SOUTH CAROLINA STATE LINE

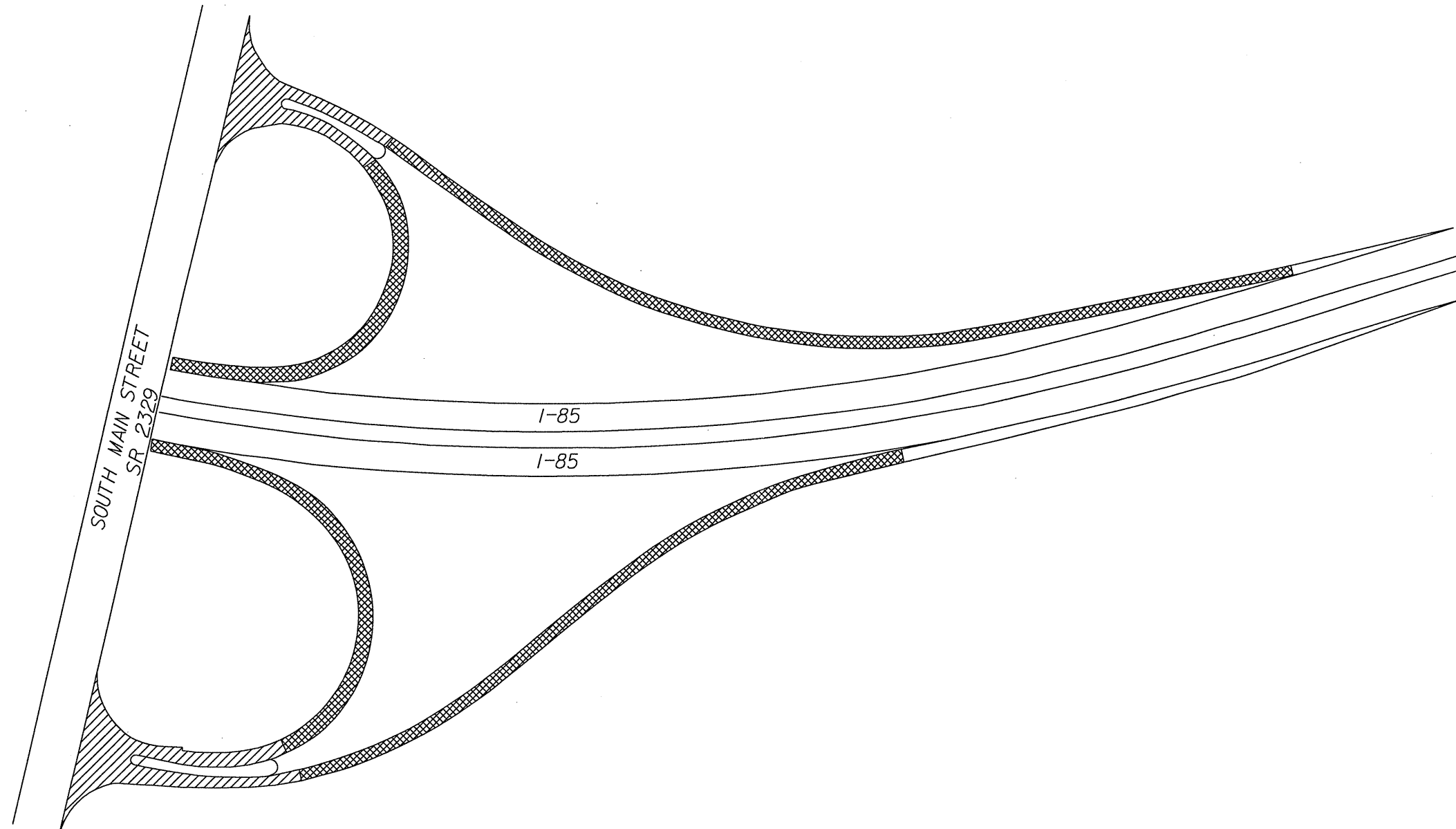
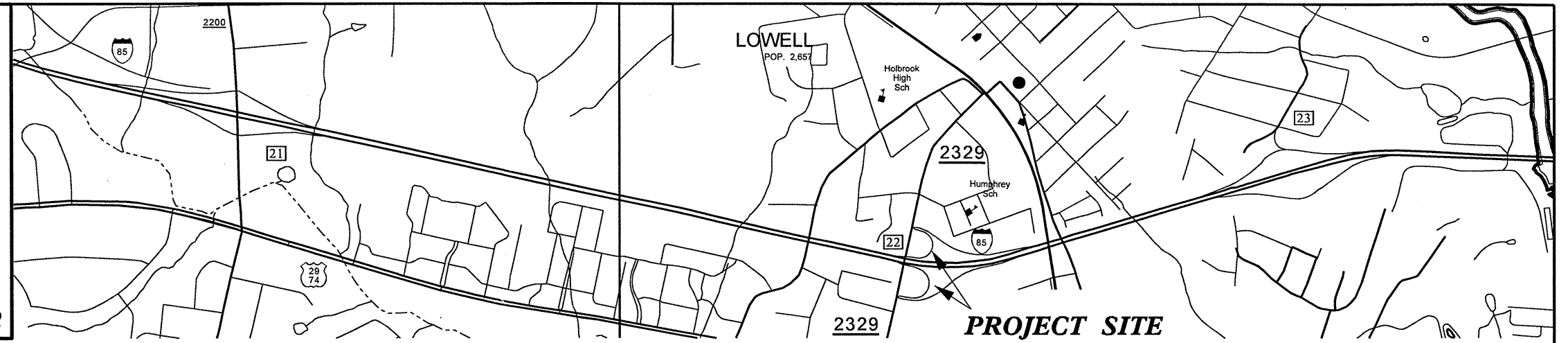
GASTON COUNTY
NORTH CAROLINA

I-5403
WBS 45416.3.ST1

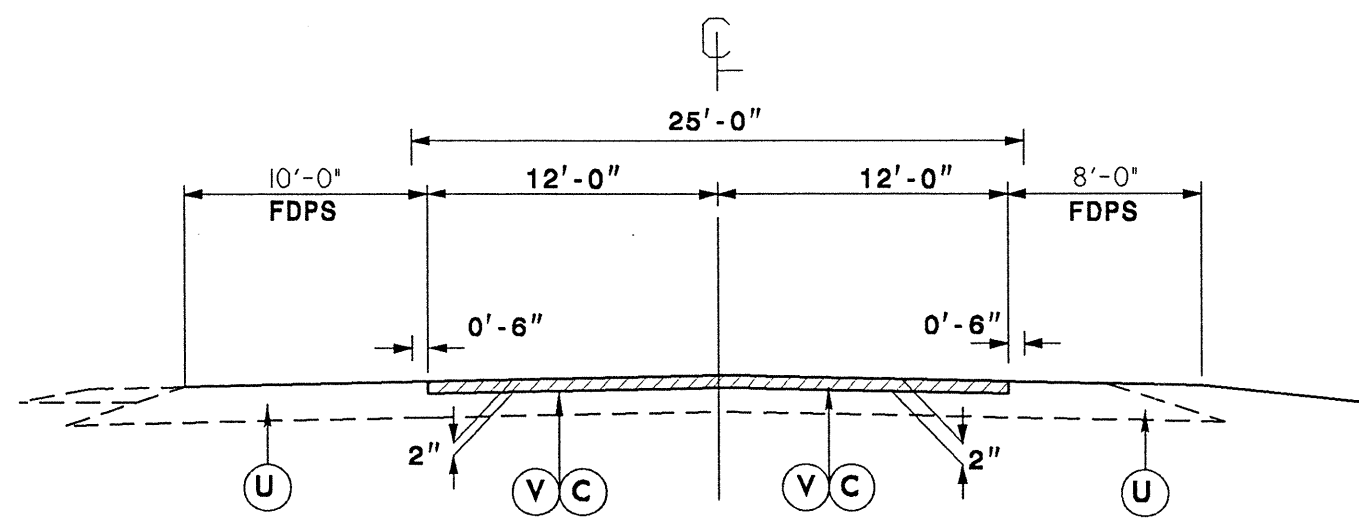
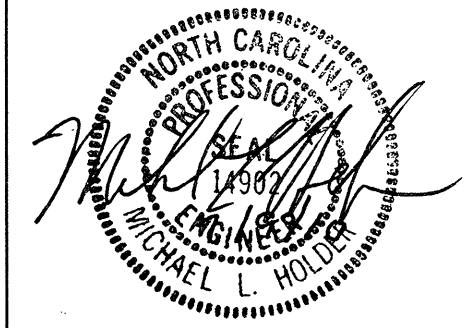
SHEET 2

RAMPS & LOOPS AT I-85 EXIT 22

NOT TO SCALE

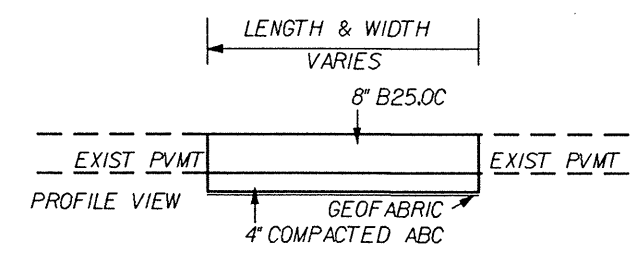


5/14/95

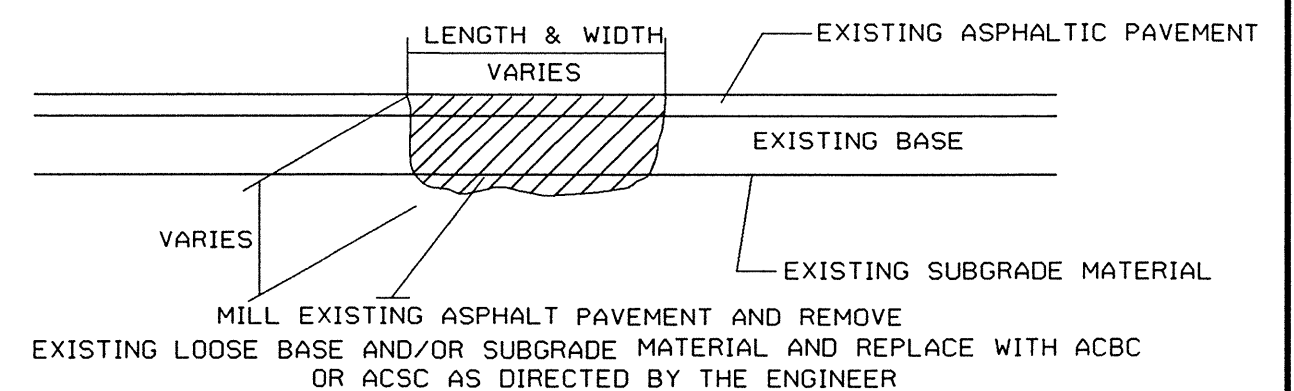


TYPICAL SECTION NO. 1

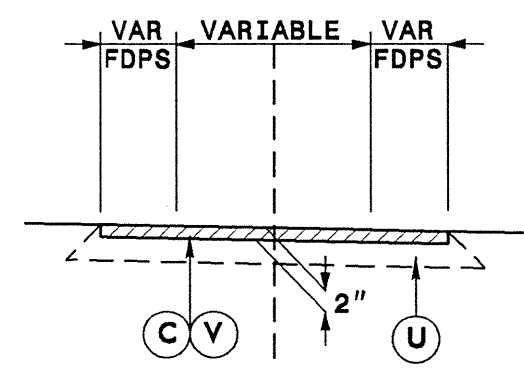
USE TYPICAL SECTION NO. 1 FROM MM 0 TO MM 7.2
I-85 NORTHBOUND AND SOUTHBOUND LANES



FULL DEPTH PATCHING DETAIL
USE DETAIL AT EXIT 22 RAMPS

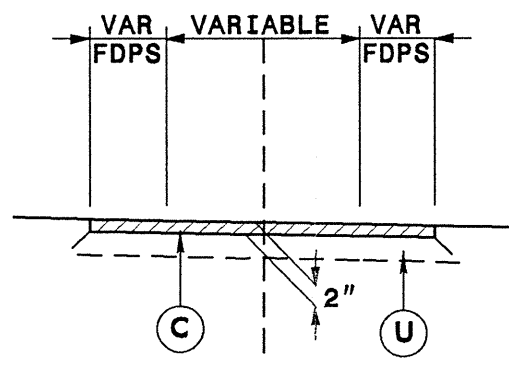


PATCHING EXISTING PAVEMENT



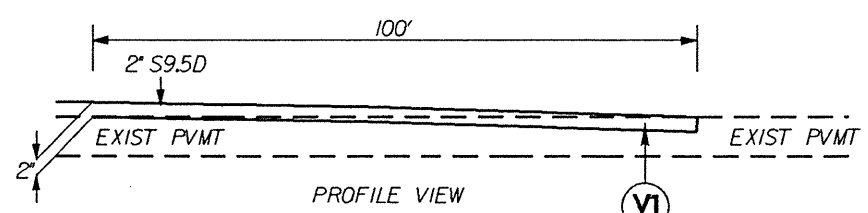
TYPICAL SECTION NO. 2

USE TYPICAL SECTION NO. 2 FOR RAMPS,
LOOPS, ACCELERATION AND DECELERATION LANES
FROM SC LINE TO MM 7.2



TYPICAL SECTION NO. 3

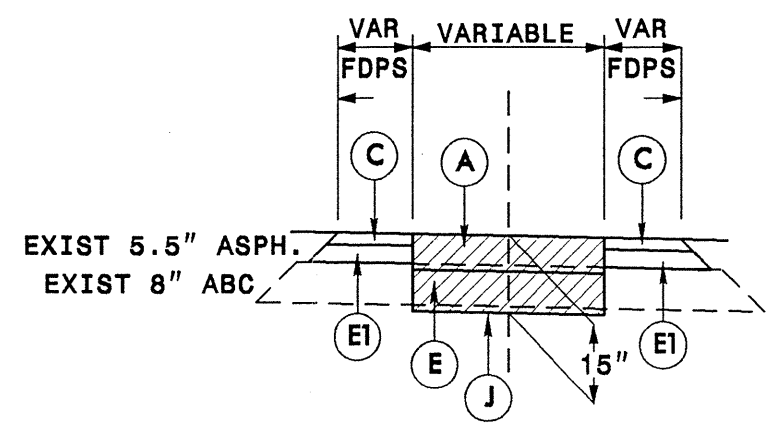
USE TYPICAL SECTION NO. 3 FOR RAMPS
AND LOOPS AT EXIT 22 FROM I-85 TO
PROPOSED CONC WHITETOPPING



**Ramp and Loop
Pavement Transition Detail**

USE DETAIL AT THE FOLLOWING LOCATIONS

EXIT 22, AT BEGINNING AND END OF 2" OVERLAY ON RAMPS



TYPICAL SECTION NO. 4

USE TYPICAL SECTION NO. 4 FOR RAMPS
AND LOOPS AT EXIT 22 FROM MAIN ST.
TOWARDS I-85 FOR APPROX 200'

PAVEMENT SCHEDULE	
A	7" PORTLAND CEMENT CONCRETE PAVEMENT
C	PROP. APPROX. 2" ASPHALT CONCRETE SURFACE COURSE, TYPE S9.5D, AT AN AVERAGE RATE OF 224 LBS. PER SQ. YD.
E	PROP. APPROX. 8" ASPHALT BINDER BASE COURSE, TYPE B 25.0 C, AT AN AVERAGE RATE OF 456 LBS. PER SQ. YD. IN EACH OF TWO LIFTS
E1	PROP. APPROX. 4" ASPHALT BINDER BASE COURSE, TYPE B 25.0 C, AT AN AVERAGE RATE OF 456 LBS. PER SQ. YD.
J	PROP. AGGREGATE BASE COURSE TO BE PLACED AS DIRECTED
U	EXISTING PAVEMENT.
V	MILLING ASPHALT PAVEMENT 2" DEPTH
V1	MILLING ASPHALT PAVEMENT 0" - 2" DEPTH

PROJECT NO.	SHEET NO.	TOTAL NO.
I-5403, 45416.3.ST1	4	

SUMMARY OF QUANTITIES

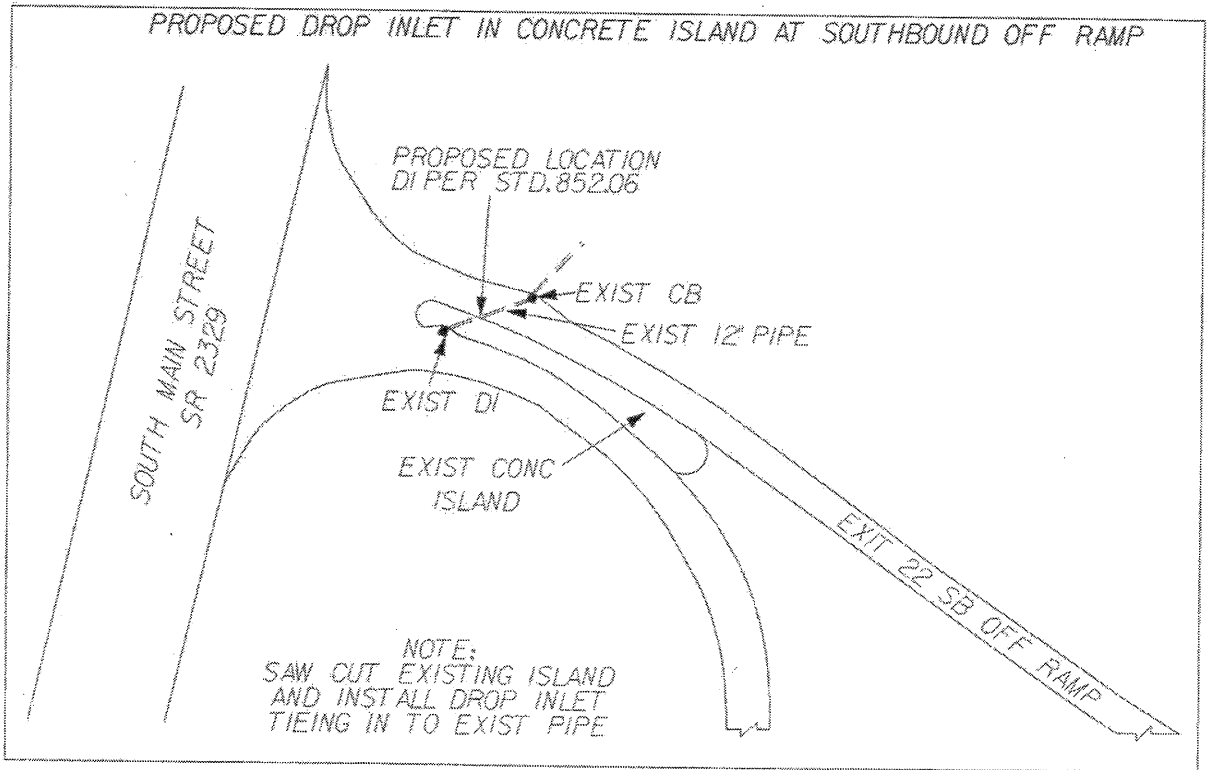
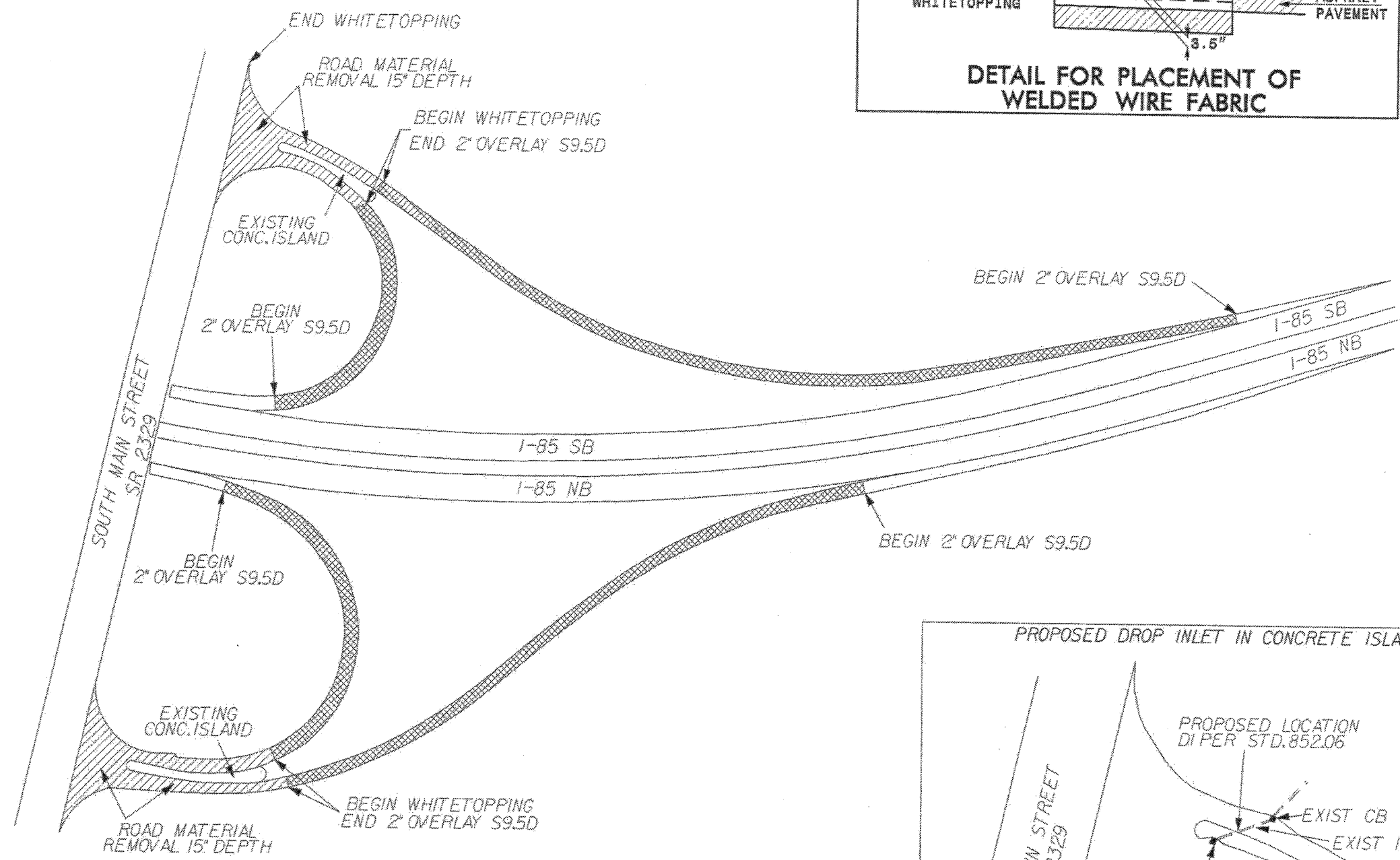
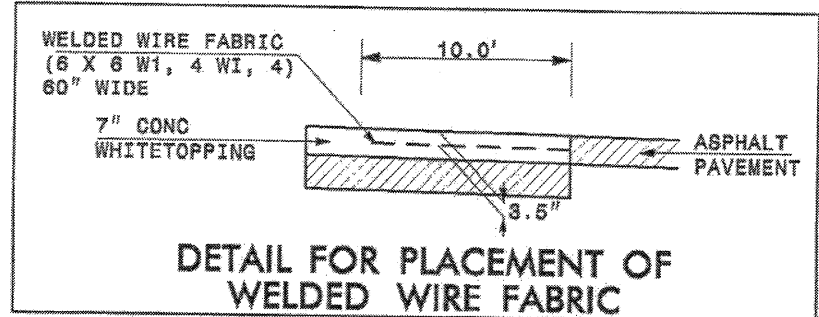
PROJECT NO	COUNTY	MAP NO	ROUTE	DESCRIPTION	TYP NO	FINAL SURFACE TESTING REQUIRED	LENGTH MI	WIDTH FT	CONSTRUCTION SURVEYING LS	7" PORTLAND CEMENT WHITE TOPPING SY	FABRIC FOR SOIL STABILIZATION SY	ROAD MATERIAL REMOVAL SY	AGGREGATE BASE COURSE TONS	2" MILLING SY	0" TO 2" MILLING SY
I-5403	Cleveland	1	I-85	FROM SC STATE LINE TO MP 7.2	1, 2	NO	7.2	24						252,312	
TOTAL FOR MAP NO. 1							7.2							252,312	
	Gaston	2	EXIT 22	RAMPS & LOOPS AT EXIT 22	3, 4	NO	0.2	16	1	3708	350	3,708	400		1,100
TOTAL FOR MAP NO. 2							0.2		1	3708	350	3708	400		1,100
TOTAL FOR PROJ NO. I-5403							7.4		1	3708	350	3708	400	252,312	1,100
GRAND TOTAL							7.4		1	3708	350	3708	400	252,312	1,100

PROJECT NO	COUNTY	MAP NO	ROUTE	DESCRIPTION	TYP NO	BASE COURSE, B25.0C TONS	SURFACE COURSE, S9.5D TONS	PG 64-22 PLANT MIX TONS	PG 76-22 PLANT MIX TONS	PATCHING EXISTING PAVEMENT TONS	MASONRY DRAINAGE STRUCTURES EA	FRAME WITH TWO GRATES, STD 840.16 EA	STEEL BM GUARDRAIL LF	ADDITIONAL GUARDRAIL POSTS EA	GUARDRAIL ANCHOR UNITS, TYPE 350 EA	PORTABLE LIGHTING LS
I-5403	Cleveland	1	I-85	FROM SC STATE LINE TO MP 7.2	1, 2		28,380		1,561	300			100	35	6	1
TOTAL FOR MAP NO. 1							28,380		1,561	300			100	35	6	1
	Gaston	2	EXIT 22	RAMPS & LOOPS AT EXIT 22	3, 4	1,700	950	73	52	800	1	1				*
TOTAL FOR MAP NO. 2						1,700	950	73	52	800	1	1				
TOTAL FOR PROJ NO. I-5403						1,700	29,330	73	1,613	1,100	1	1	100	35	6	1
GRAND TOTAL						1,700	29,330	73	1,613	1,100	1	1	100	35	6	1

THERMOPLASTIC AND PAINT QUANTITIES

PROJECT NO	COUNTY	MAP NO	ROUTE	DESCRIPTION	4415000000-N	4420000000-N	4430000000-N	4480000000-N	4847100000-E		4874110000-E		4847120000-E	4695000000-E	4710000000-E	4725000000-N		4905000000-N	4880000000-E
					FLASHING ARROW PANELS, TYPE C EA	CHANGEABLE MESSAGE SIGN EA	DRUMS EA	TMIA EA	6" WHITE POLYUREA (HIGHLY REFLECT.) LF	6" YELLOW POLYUREA (HIGHLY REFLECT.) LF	8" YELLOW POLYUREA (HIGHLY REFLECT.) LF	8" WHITE POLYUREA (HIGHLY REFLECT.) LF	12" WHITE POLYUREA (HIGHLY REFLECT.) LF	8" WHITE THERMO. LF	24" WHITE THERMO. LF	THERMO MERGE ARROW EA	THERMO LT RT ARROW EA	SNOW PLOWABLE MARKERS EA	CURING COMPOUND REMOVAL LF
I-5403	Cleveland	1	I-85	FROM SC STATE LINE TO MP 7.2	1	1	300	1	183,417	8,340			8,025	74	212	15		1,026	
TOTAL FOR MAP NO. 1					1	1	300	1	183,417	8,340			8,025	74	212	15		1,026	
	Gaston	2	EXIT 22	RAMPS & LOOPS AT EXIT 22					2,935	3,240	600	560	990		28		6	120	3,000
TOTAL FOR MAP NO. 2									2,935	3,240	600	560	990		28		6	120	3,000
TOTAL FOR PROJ NO. I-5403					1	1	300	1	186,352	11,580	600	560	9,015	74	240	15	6	1,146	3,000
									197,932		1,160				21				
GRAND TOTAL					1	1	300	1	186,352	11,580	600	560	9,015	74	240	15	6	1,146	3,000
									197,932		1,160				21				

PROJECT REFERENCE NO. 45416.3.ST1	SHEET NO. 5
I-5403	

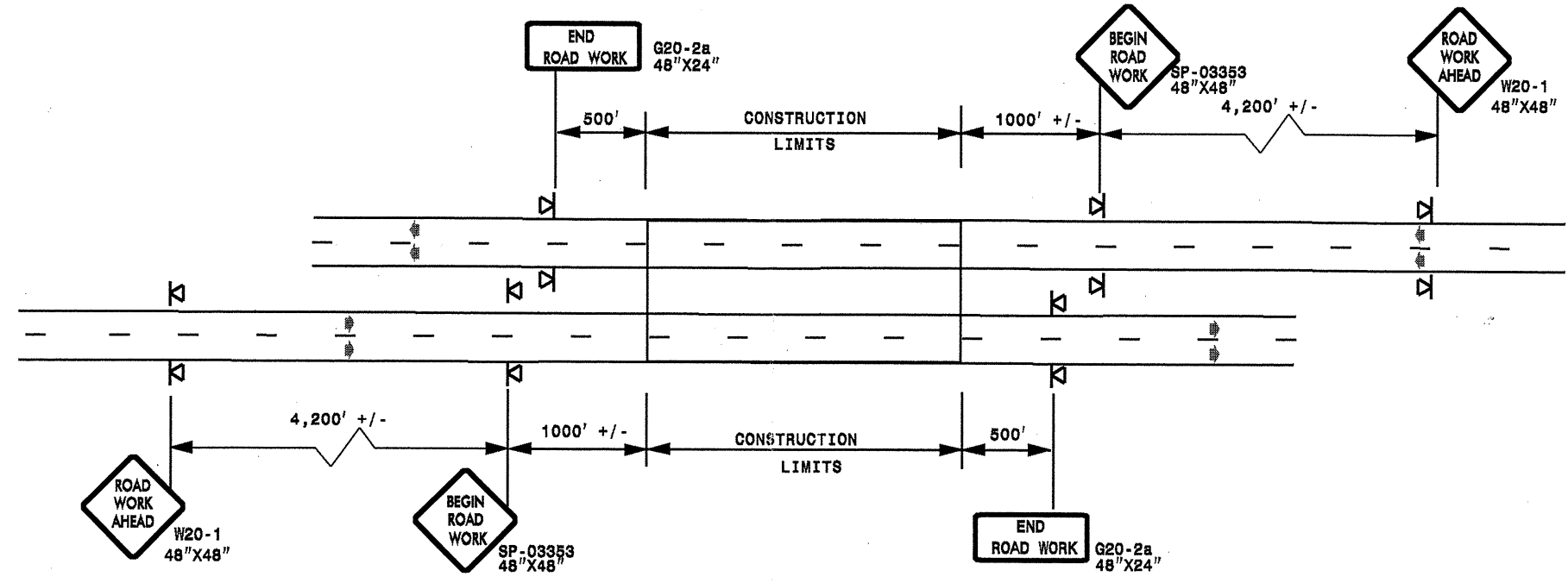


EXIT 22 AT I-85

06-JUL-2010 13:28
 Line 18: Exit 22 at I-85
 06-JUL-2010 13:28
 Line 18: Exit 22 at I-85

ADVANCE WORK ZONE WARNING SIGNING FOR FREEWAYS (4 LANES OR GREATER)

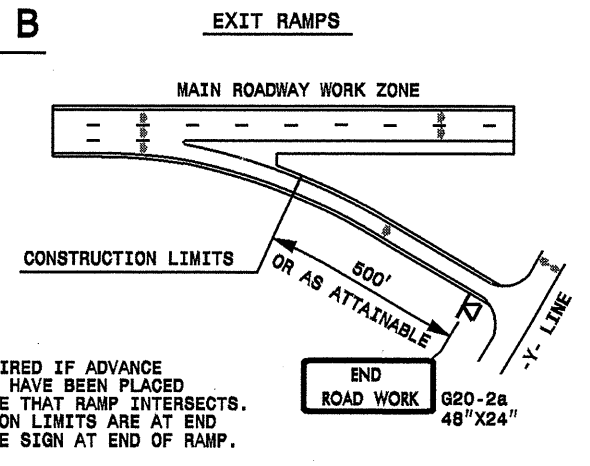
DETAIL A



STATE OF NORTH CAROLINA
DEPT. OF TRANSPORTATION
DIVISION OF HIGHWAYS
RALEIGH, N.C.

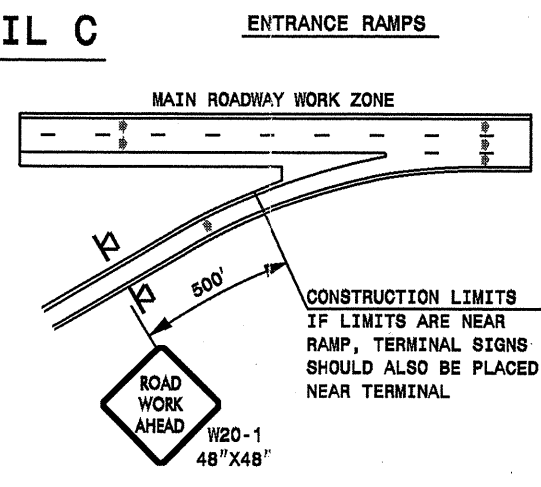
ROADWAYS INTERSECTING ALONG FREEWAY WORK ZONE (Y-LINES)

DETAIL B



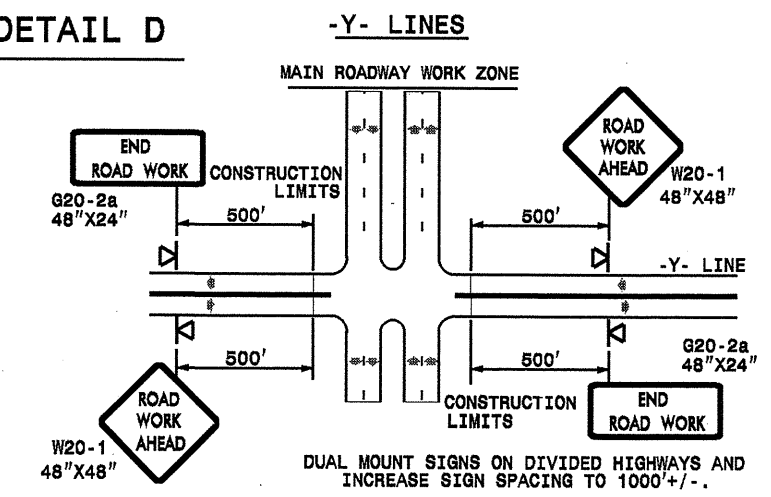
NOTE:
SIGN NOT REQUIRED IF ADVANCE WARNING SIGNS HAVE BEEN PLACED ALONG -Y- LINE THAT RAMP INTERSECTS. IF CONSTRUCTION LIMITS ARE AT END OF RAMP, PLACE SIGN AT END OF RAMP.

DETAIL C



CONSTRUCTION LIMITS IF LIMITS ARE NEAR RAMP, TERMINAL SIGNS SHOULD ALSO BE PLACED NEAR TERMINAL

DETAIL D



DUAL MOUNT SIGNS ON DIVIDED HIGHWAYS AND INCREASE SIGN SPACING TO 1000' +/-.

**DETAIL DRAWING
FOR FREEWAYS
WORK ZONE WARNING SIGNS
(SHORT-DURATION LANE CLOSURES)**

GENERAL NOTES

- USE FLUORESCENT ORANGE SHEETING (TYPE VII OR HIGHER) ON ALL ADVANCE WORK ZONE SIGNS.
- DO NOT INSTALL ADVANCE WARNING SIGNS MORE THAN 3 DAYS PRIOR TO BEGINNING OF WORK.
- ALL SIGN SPACING DIMENSIONS ARE APPROXIMATE, FIELD ADJUST AS NECESSARY OR AS DIRECTED.
- USE PORTABLE WORK ZONE SIGNS ONLY WITH PORTABLE WORK ZONE SIGN STANDS SPECIFICALLY DESIGNED FOR ONE ANOTHER. PORTABLE WORK ZONE SIGNS MAY BE ROLL UP OR APPROVED COMPOSITE.
- PROVIDE PORTABLE WORK ZONE SIGN STANDS, PORTABLE SIGNS AND SIGN SHEETING WHICH ARE LISTED ON THE NORTH CAROLINA DEPARTMENT OF TRANSPORTATION'S APPROVED PRODUCT LIST OR ACCEPTED AS TRAFFIC QUALIFIED BY THE TRAFFIC CONTROL UNIT.
- ** TWO-WAY UNDIVIDED ADVANCE WARNING SIGN CONFIGURATION MAY BE USED ON MULTI-LANE FACILITIES WHERE CONDITIONS LIMIT THE USE OF DUAL MOUNTED SIGNS AS DETERMINED BY THE ENGINEER.

LEGEND

▣ PORTABLE SIGN

➔ DIRECTION OF TRAFFIC FLOW

SHEET 1 OF 1

APPROVED: _____	DATE: _____		DETAIL DRAWING FOR FREEWAYS WORK ZONE WARNING SIGNS	
			SCALE: NONE	REVISIONS
		DATE: _____	7-98	10/01
		DWG. BY: _____	10-98	03/04
		DESIGN BY: _____	01/01	11/04
		REVIEWED BY: _____		

I:\JUL-2000 14:47
 P:\Engineering\resurfacing\2000\Div12\C20261.45416.3.ST1-I-5403-freeway\resurfacing\2006-par-table.dgn
 P:\Engineering\resurfacing\2000\Div12\C20261.45416.3.ST1-I-5403-freeway\resurfacing\2006-par-table.dgn