

STATE OF NORTH CAROLINA
DIVISION OF HIGHWAYS

STATE PROJECT REFERENCE NO.	SHEET NO.
B-4820	TCP-1

**PLAN FOR PROPOSED
TRAFFIC CONTROL, MARKING & DELINEATION
SURRY COUNTY**

B-4820

ROADWAY STANDARD DRAWINGS





THE FOLLOWING ROADWAY STANDARDS AS APPEAR IN "ROADWAY STANDARD DRAWINGS" - PROJECT SERVICES UNIT - N.C. DEPARTMENT OF TRANSPORTATION - RALEIGH, N.C., DATED JULY 2006 ARE APPLICABLE TO THIS PROJECT AND BY REFERENCE HEREBY ARE CONSIDERED A PART OF THESE PLANS:

STD. NO.	TITLE
1101.02	TEMPORARY LANE CLOSURES
1101.03	TEMPORARY ROAD CLOSURES
1101.05	WORK ZONE VEHICLE ACCESSES
1101.11	TRAFFIC CONTROL DESIGN TABLES
1110.01	STATIONARY WORK ZONE SIGNS
1110.02	PORTABLE WORK ZONE SIGNS
1130.01	DRUMS
1135.01	CONES
1145.01	BARRICADES
1150.01	FLAGGING DEVICES
1180.01	SKINNY-DRUM

INDEX OF SHEETS

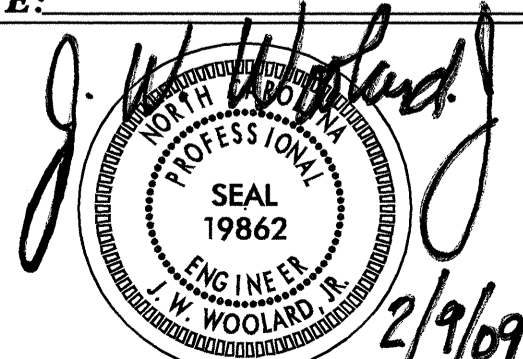
SHEET NO.	TITLE
TCP-1	LIST OF APPLICABLE ROADWAY STANDARD DRAWINGS, LEGEND AND INDEX OF SHEETS
TCP-2	GENERAL NOTES AND PHASING
TCP-3	STEP 3 BOAT RAMP LAUNCH OFFSITE DETOUR
TCP-4	STEP 5 STANDARD ST OFFSITE DETOUR
TCP-5	STEP 7 MAIN ST OFFSITE DETOUR
TCP-6	DETAIL DRAWING FOR TWO-WAY UNDIVIDED AND URBAN FREEWAYS ADVANCED WORK ZONE WARNING SIGNS
SD-1	SPECIAL SIGN DESIGN

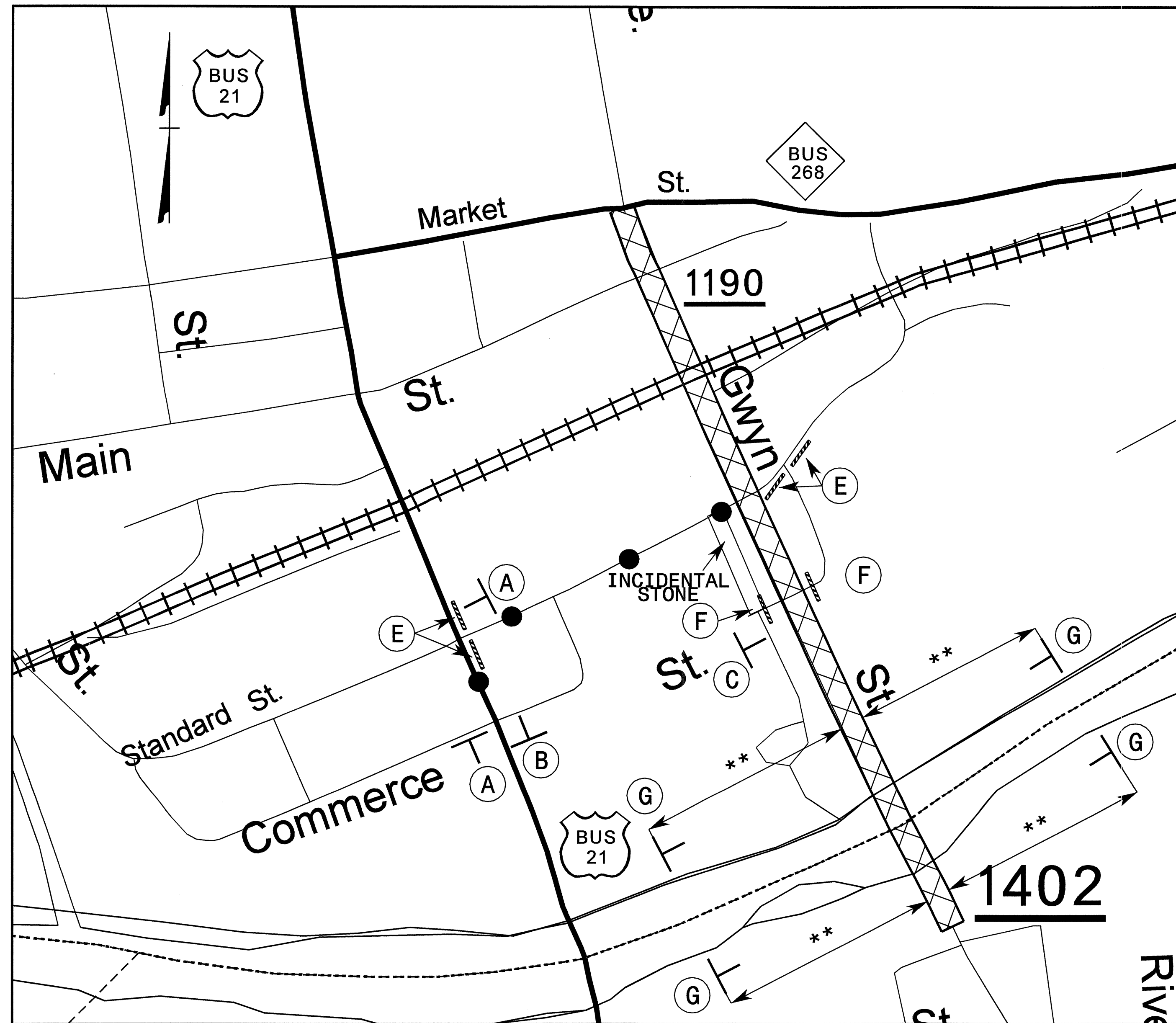
LEGEND

- GENERAL**
-  NORTH ARROW
 -  REMOVAL OF EXISTING BRIDGE STRUCTURE
- TRAFFIC CONTROL DEVICES**
-  TYPE III BARRICADE
 -  STATIONARY SIGN

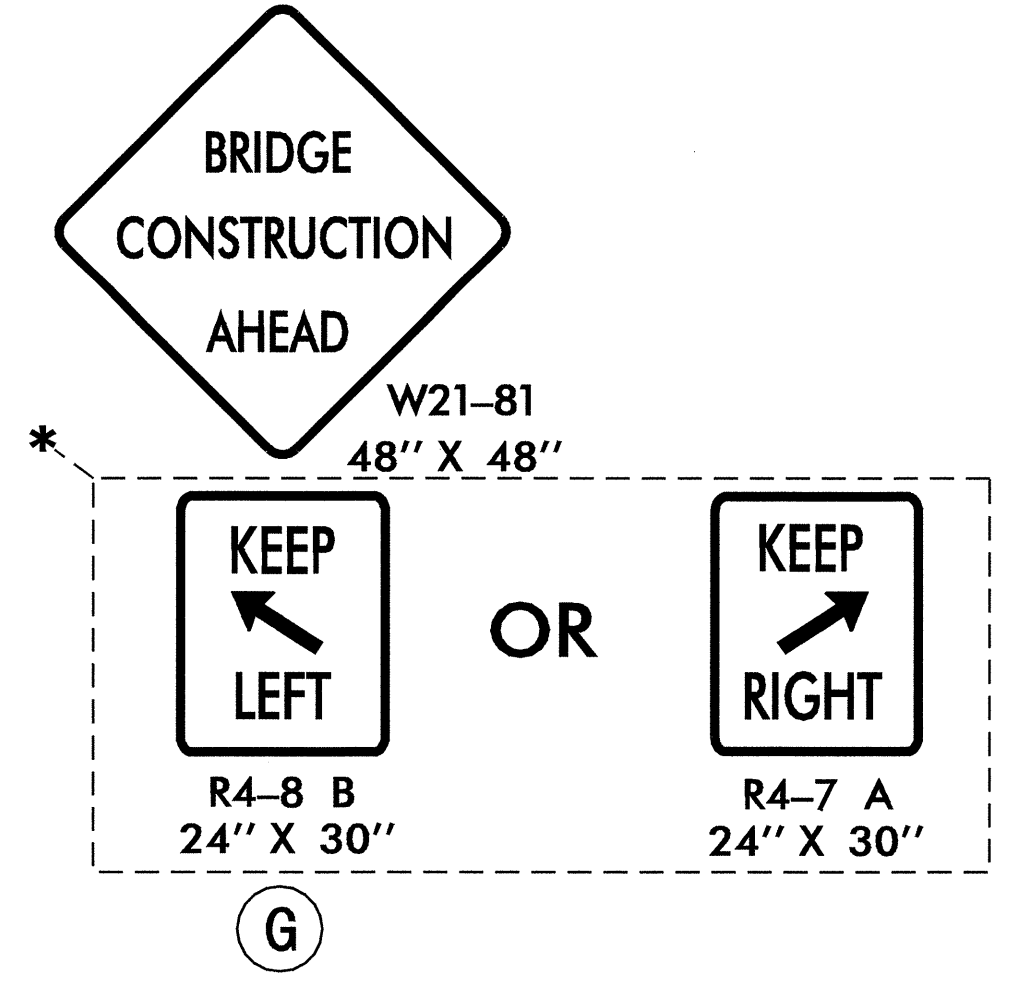
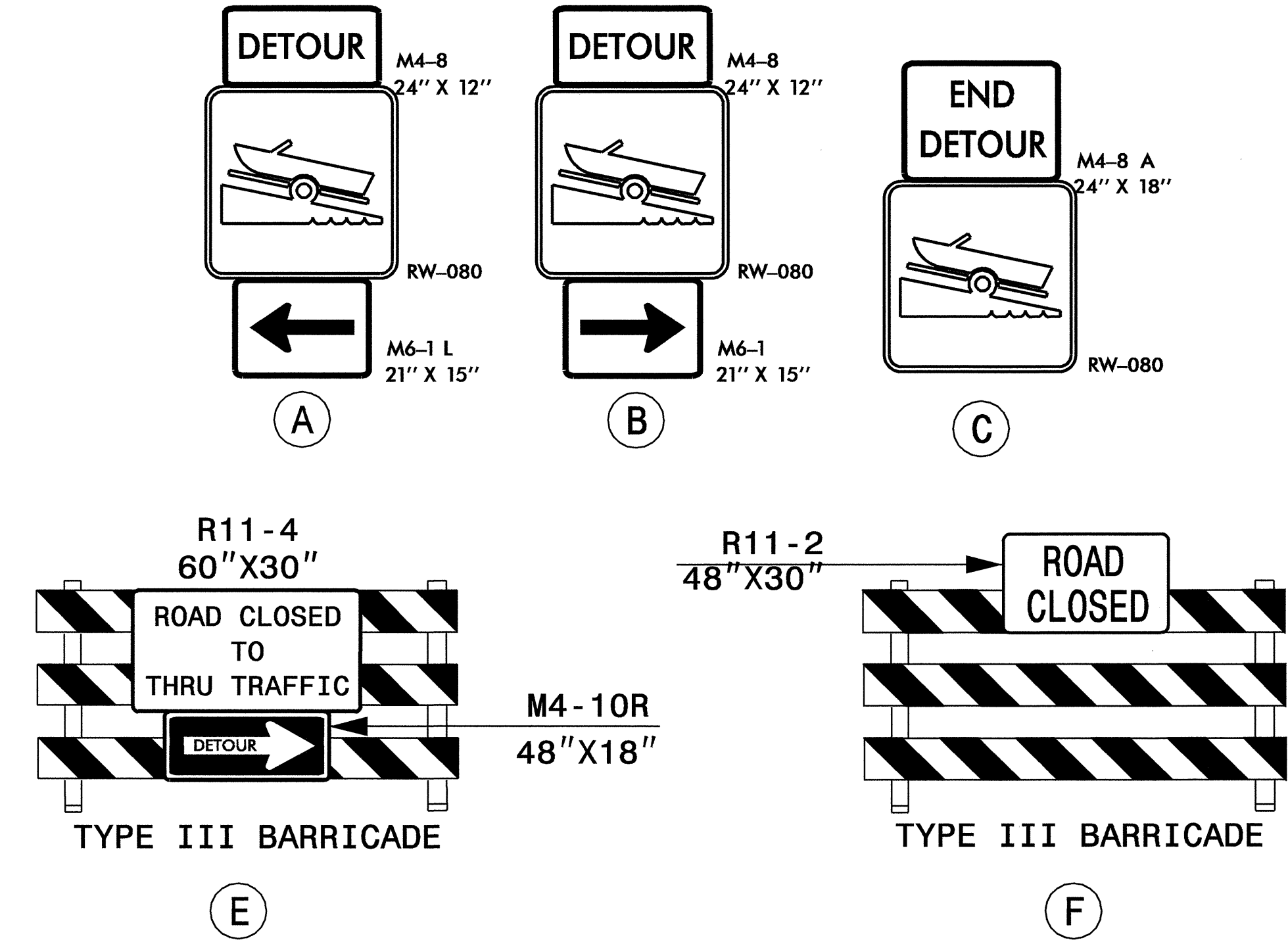
TIP PROJECT:

09-FEB-2009 16:38
\\dot\dfs\010\proj\tip\projects-b\4820\traffic\trafficcontrol\top\b-4820_tc_top_01_title.dgn
AT WZTC244738

APPROVED: DATE:	PLAN PREPARED BY: N.C.D.O.T. WORK ZONE TRAFFIC CONTROL UNIT
SEAL 	J. S. BOURNE, P.E. TRAFFIC CONTROL ENGINEER G. L. GETTIER, P.E. TRAFFIC CONTROL PROJECT ENGINEER J. W. WOOLARD, P.E. TRAFFIC CONTROL PROJECT DESIGN ENGINEER D. A. HAYES, E.I. TRAFFIC CONTROL DESIGN ENGINEER / TECHNICIAN



REFER TO ROADWAY STANDARD
DRAWING 1101.03, SHEET 1 OF 9
FOR APPLICABLE NOTES.

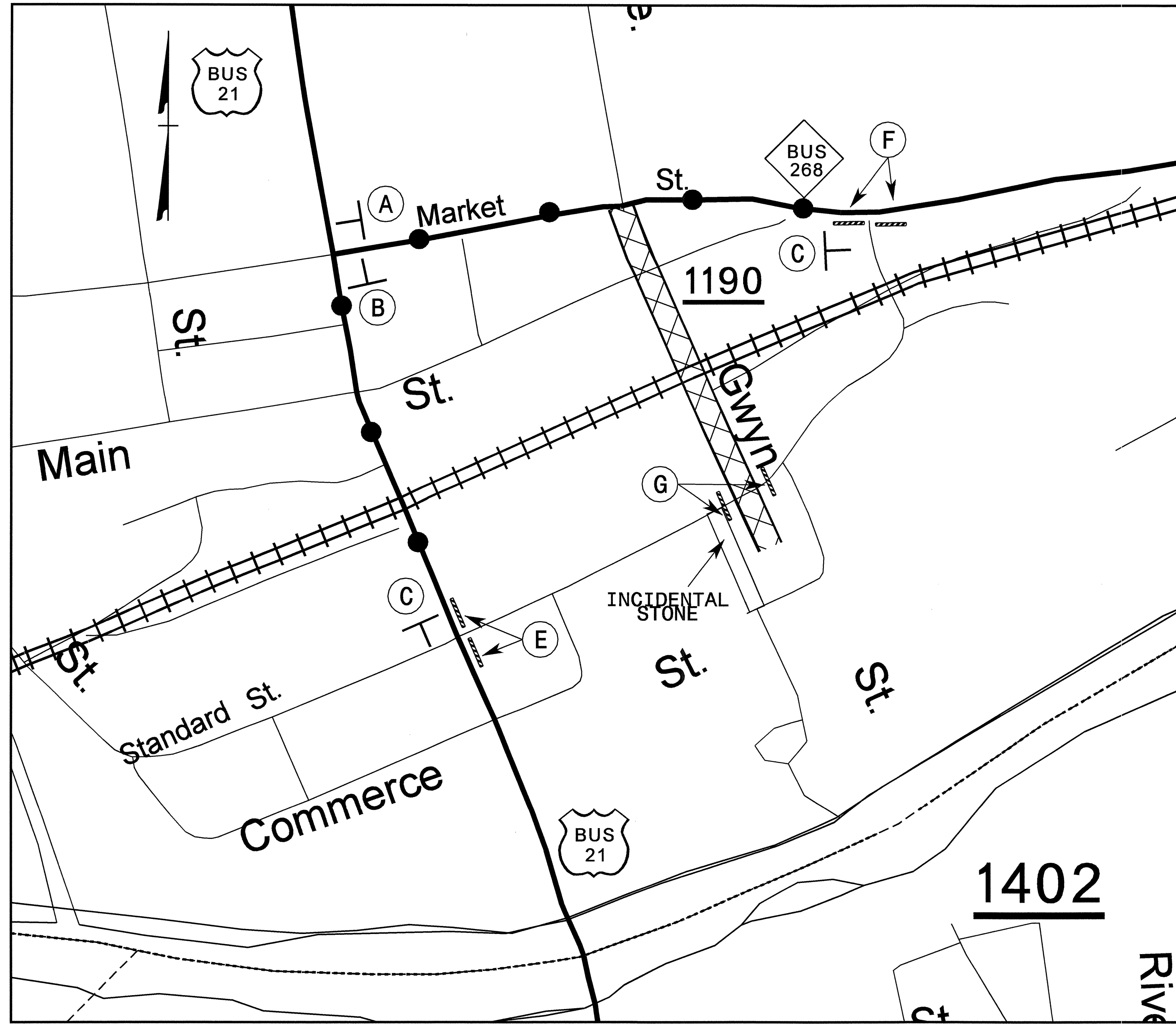


* USE SIGN TO DIRECT BOAT TRAFFIC OPPOSITE THE SIDE OF BRIDGE REMOVAL.

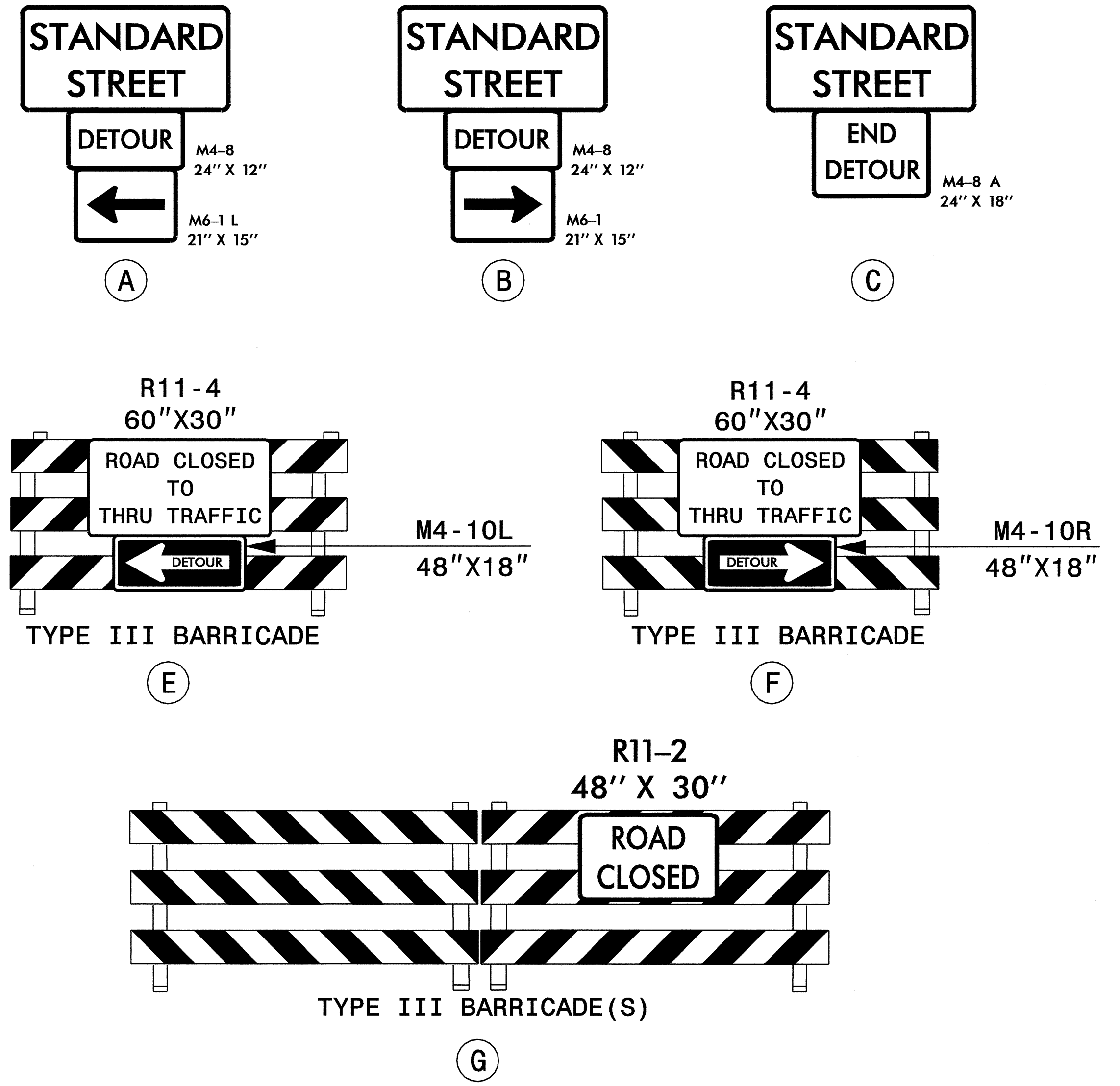
**NOTE: SIGN ASSEMBLY "G" LOCATIONS ARE TO BE DETERMINED BY THE ENGINEER.

23-FEB-2009 07:40 \\dot\dfsroot\proj\N\Tipp\projects-b\4820\traffic\trafficcontrol\top\B-4820_TC-TCP_03 OSD_BoatRamp.dgn dnyes AT W21C244738

APPROVED:	DATE: 2/23/09	STEP 3 BOAT RAMP LAUNCH OFFSITE DETOUR	
SEAL		SCALE: NONE	REVISIONS
		DATE: 01/09	
		DWG. BY: DAH	
		DESIGN BY: DAH	
		REVIEWED BY: JWW	

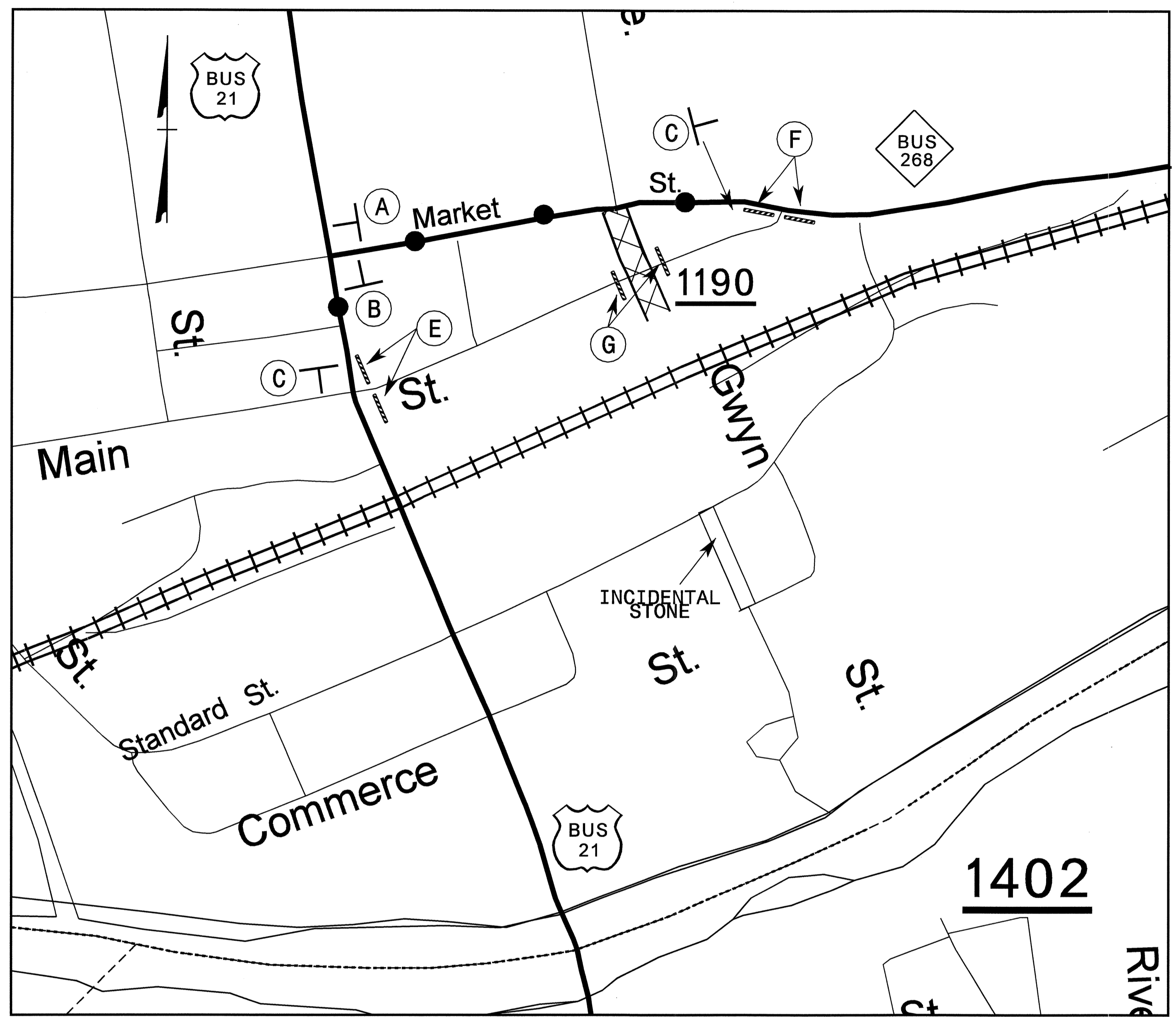


REFER TO ROADWAY STANDARD
DRAWING 1101.03, SHEET 1 OF 9
FOR APPLICABLE NOTES.

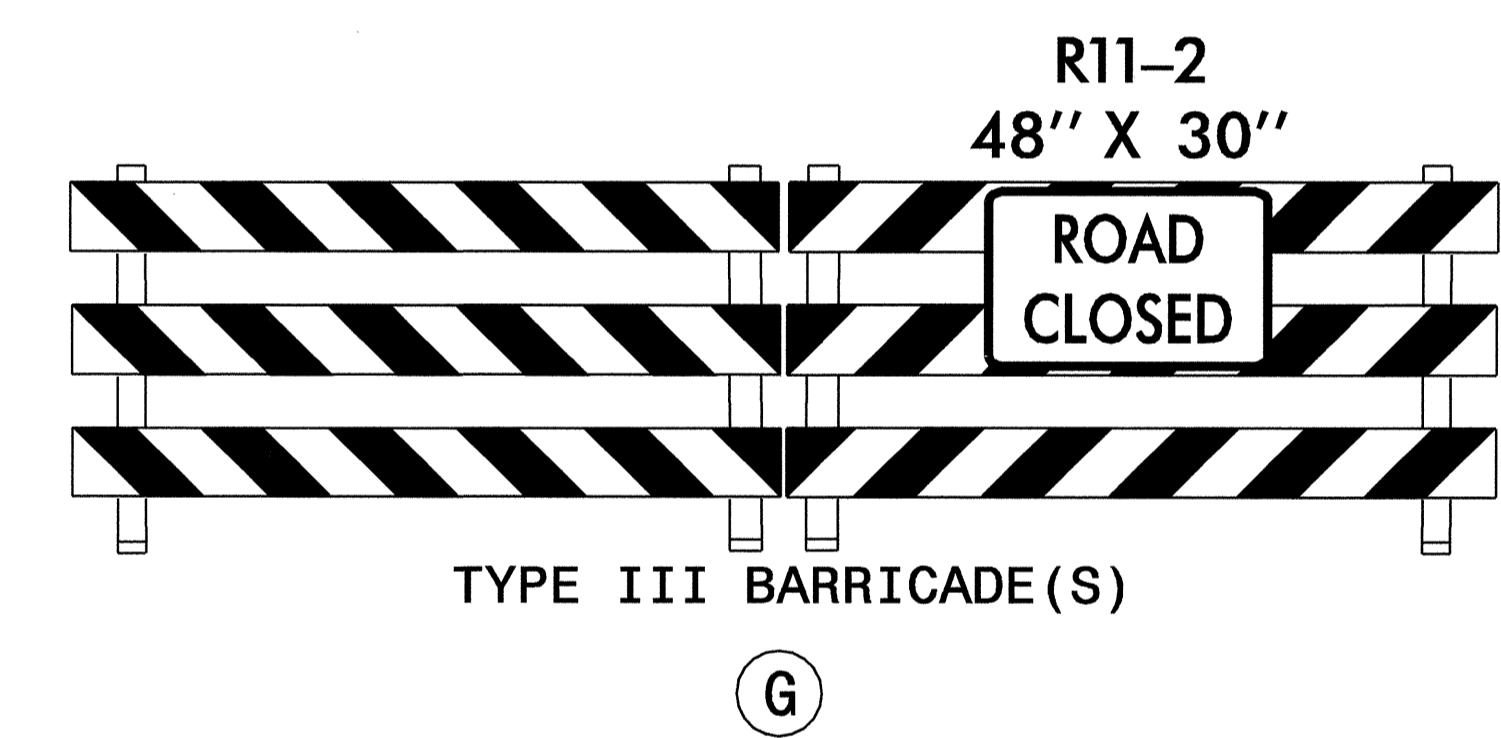
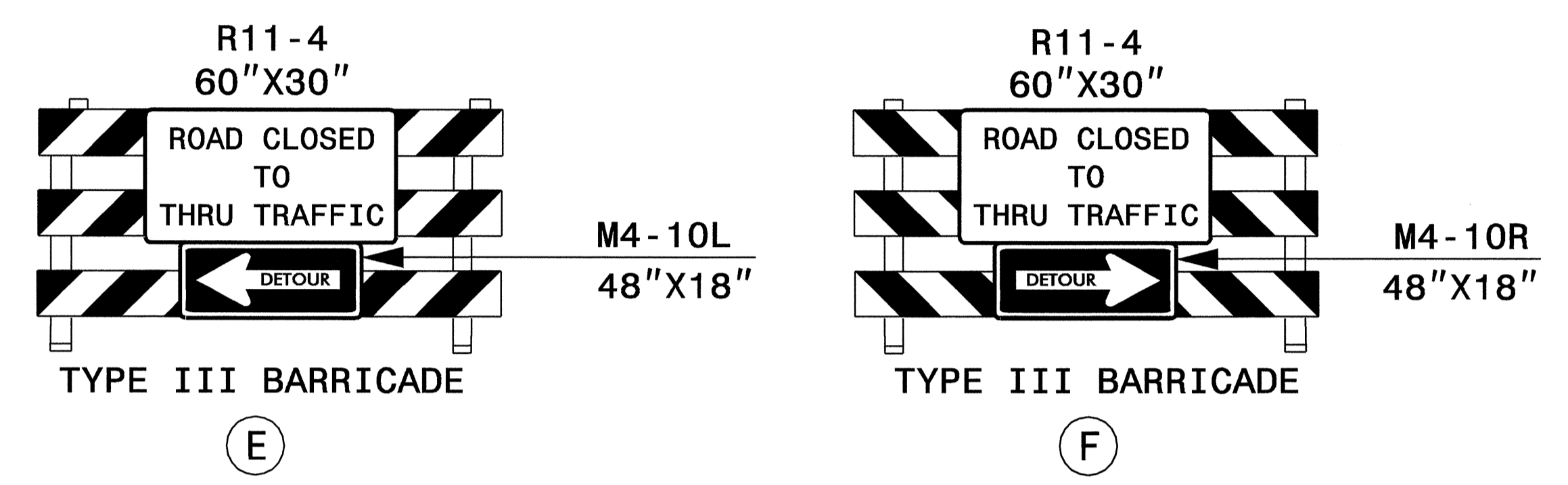
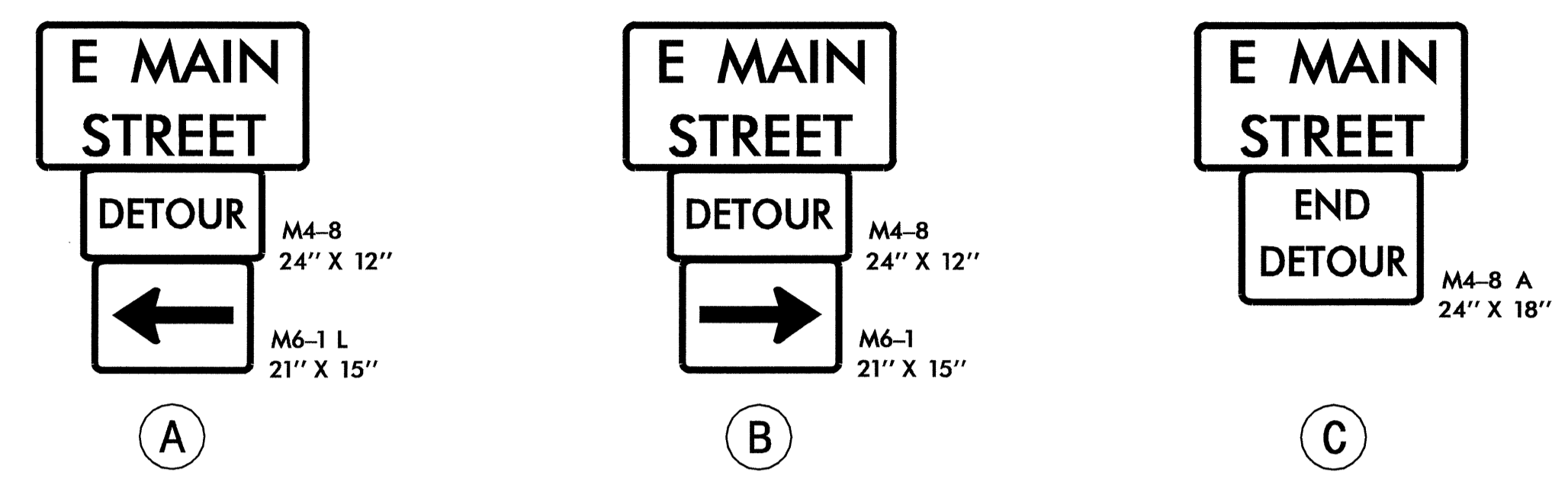


23-FEB-2009 06:58
 \\dot\dfsroot\01\proj\proj\trafficcontrol\tcp\B-4820\traffic\trafficcontrol\tcp\B-4820.TC.TCP_04.OSD_Standard.dgn
 chaves AT WZTC24738

APPROVED:	DATE:	STEP 5 STANDARD ST OFFSITE DETOUR							
	01/23/09								
SCALE:	NONE								
DATE:	01/09								
DWG. BY:	DAH								
DESIGN BY:	DAH								
REVIEWED BY:	JWW	<table border="1"> <thead> <tr> <th colspan="2">REVISIONS</th> </tr> </thead> <tbody> <tr> <td> </td> <td> </td> </tr> <tr> <td> </td> <td> </td> </tr> </tbody> </table>		REVISIONS					
REVISIONS									



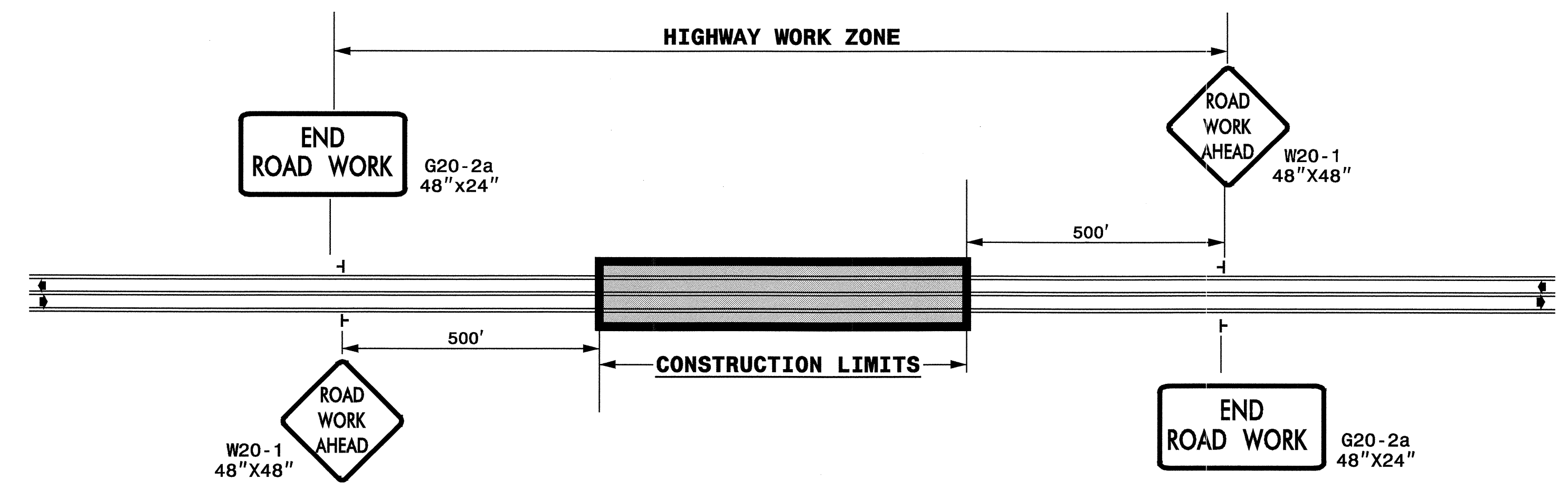
REFER TO ROADWAY STANDARD
DRAWING 1101.03, SHEET 1 OF 9
FOR APPLICABLE NOTES.



23-FEB-2009 06:48
 \\dot\dfsroot\01\proj\11\proj\traffic\trafficcontrol\top\b-4820_tcp_top_05_osd_main.dgn
 dhayes AT WZTC24738

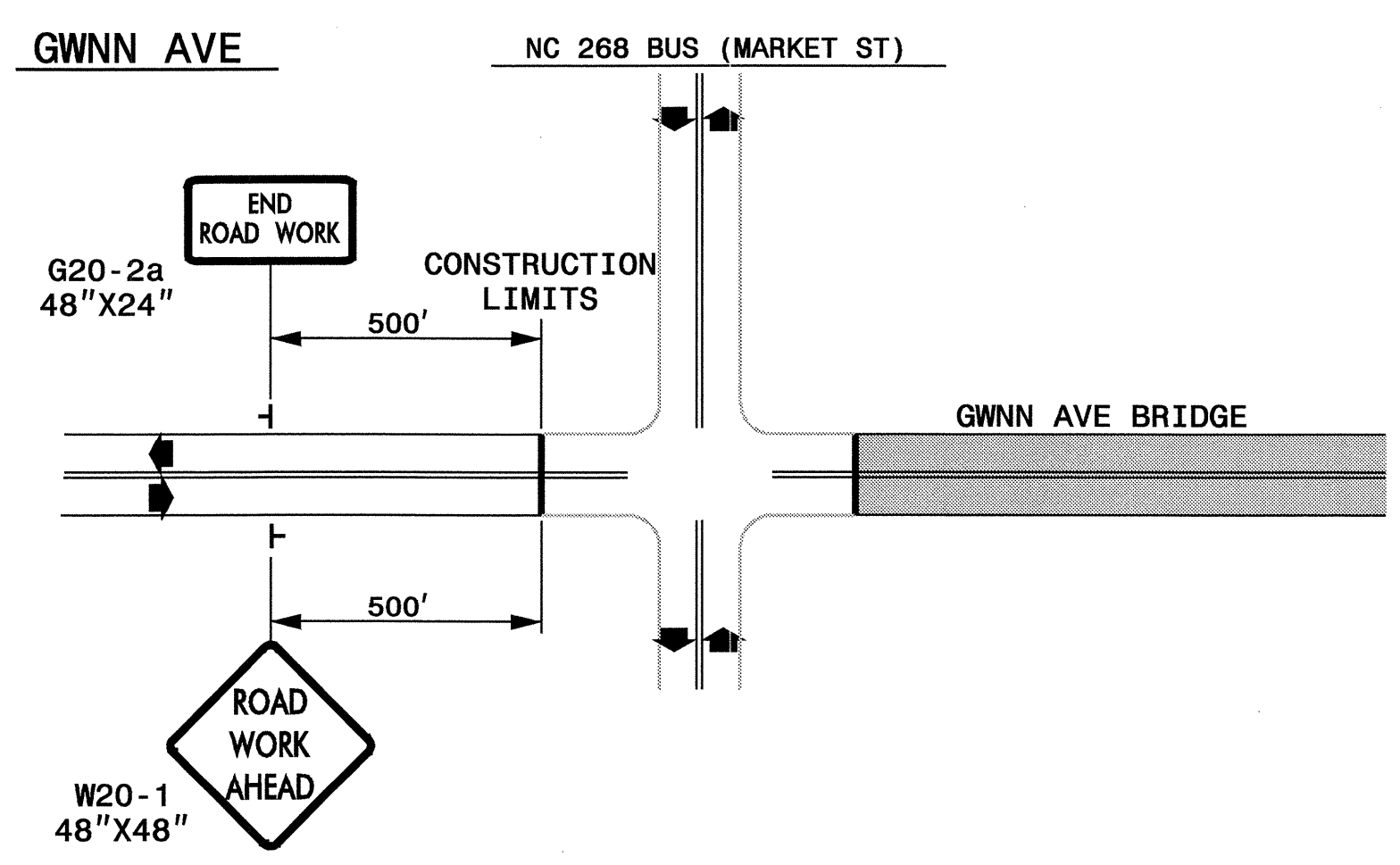
APPROVED:	DATE: 2/23/09	STEP 7 MAIN ST OFFSITE DETOUR SIGNING	
SCALE: NONE	REVISIONS		
DWG. BY: DAH	DESIGN BY: DAH		DATE: 01/09
REVIEWED BY: JWW			CADD FILE

TWO-WAY UNDIVIDED ** (NC 268 BUS (MARKET ST))



STATE OF NORTH CAROLINA
 DEPT. OF TRANSPORTATION
 DIVISION OF HIGHWAYS
 RALEIGH, N.C.

ROADWAYS INTERSECTING ALONG 2 WAY UNDIVIDED WORK ZONE (GWNN AVE)



**DETAIL DRAWING FOR
 TWO-WAY UNDIVIDED
 WORK ZONE WARNING SIGNS**

GENERAL NOTES

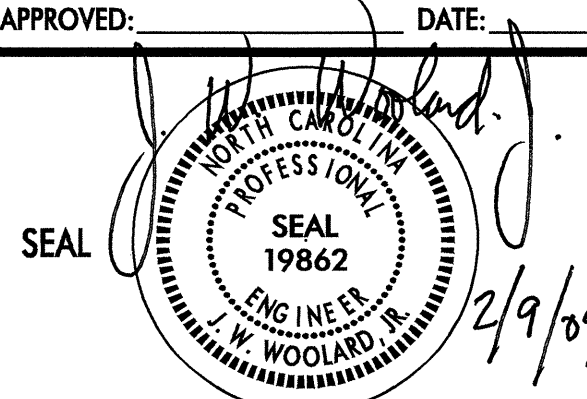
- USE FLUORESCENT ORANGE SHEETING (TYPE VII OR HIGHER) ON ALL ADVANCED WORK ZONE SIGNS.
- DO NOT INSTALL ADVANCE WARNING SIGNS MORE THAN 3 DAYS PRIOR TO BEGINNING OF WORK.
- SIGNS SHOWN ARE REQUIRED FOR WORK ZONES THAT WILL REMAIN IN EFFECT OVERNIGHT. FOR SHORT-TERM DAILY MAINTENANCE TYPE OPERATIONS, THIS SIGNING APPLICATION IS OPTIONAL; MAY USE ONLY APPLICABLE ROADWAY STANDARD DRAWINGS INSTEAD. HOWEVER, IF THIS SIGNING APPLICATION IS USED, SIGNS MAY BE PORTABLE MOUNTED.
- ALL SIGN SPACING DIMENSIONS ARE APPROXIMATE, FIELD ADJUST AS NECESSARY OR AS DIRECTED.
- USE 3LB STEEL U-CHANNEL POST OR 4" X 4" WOOD POST FOR ALL WORK ZONE SIGNS. 3LB STEEL U-CHANNEL POSTS MUST MEET THE REQUIREMENTS OF STANDARD SPECIFICATION SECTION 1094-1(B), MAY BE GALVANIZED STEEL, OR MAY BE PAINTED GREEN BY THE POST MANUFACTURER. SQUARE STEEL TUBING POSTS HAVING EQUIVALENT STRENGTH OF THE 3 LB STEEL U-CHANNEL POST ARE ALSO ACCEPTABLE FOR USE. ERECT SIGNS PER ROADWAY STANDARD DRAWING 1110.01. PAYMENT FOR WOOD POSTS, 3LB STEEL U-CHANNEL AND SQUARE STEEL TUBING POSTS WITH SIGNS WILL BE MADE ACCORDING TO STANDARD SPECIFICATION "WORK ZONE SIGNS" SECTION 1110.
- WHEN NECESSARY, USE SPLICING IN ACCORDANCE WITH ROADWAY STANDARD DRAWING NO. 1110.01. REMOVE ENTIRE POST WHEN REMOVING SIGNS WITH SPLICED POSTS.
- DO NOT BACK BRACE SIGN SUPPORTS.
- ** TWO-WAY UNDIVIDED ADVANCE WARNING SIGN CONFIGURATION MAY BE USED ON URBAN MULTI-LANE FACILITIES WHERE CONDITIONS LIMIT THE USE OF DUAL MOUNTED SIGNS AS DETERMINED BY THE ENGINEER.

LEGEND

┆ STATIONARY SIGN

◀ DIRECTION OF TRAFFIC FLOW

SHEET 1 OF 1

APPROVED: 	DATE: 2/9/09	DETAIL DRAWING FOR TWO-WAY UNDIVIDED AND URBAN FREEWAYS ADVANCED WORK ZONE WARNING SIGNS	
SEAL	SCALE: NONE	REVISIONS	
	DATE: 01/09	7-98	10/01
	DWG. BY: DAH	10-98	03/04
	DESIGN BY: DAH	01/01	11/04
REVIEWED BY: JWW			

09-FEB-2009 16:36
 \\dot\dfsroot\01\proj\h\pprojects\b4820\trafficcontrol\top\b-4820_tcp_06_aws.dgn
 chaves AT WZTC24738