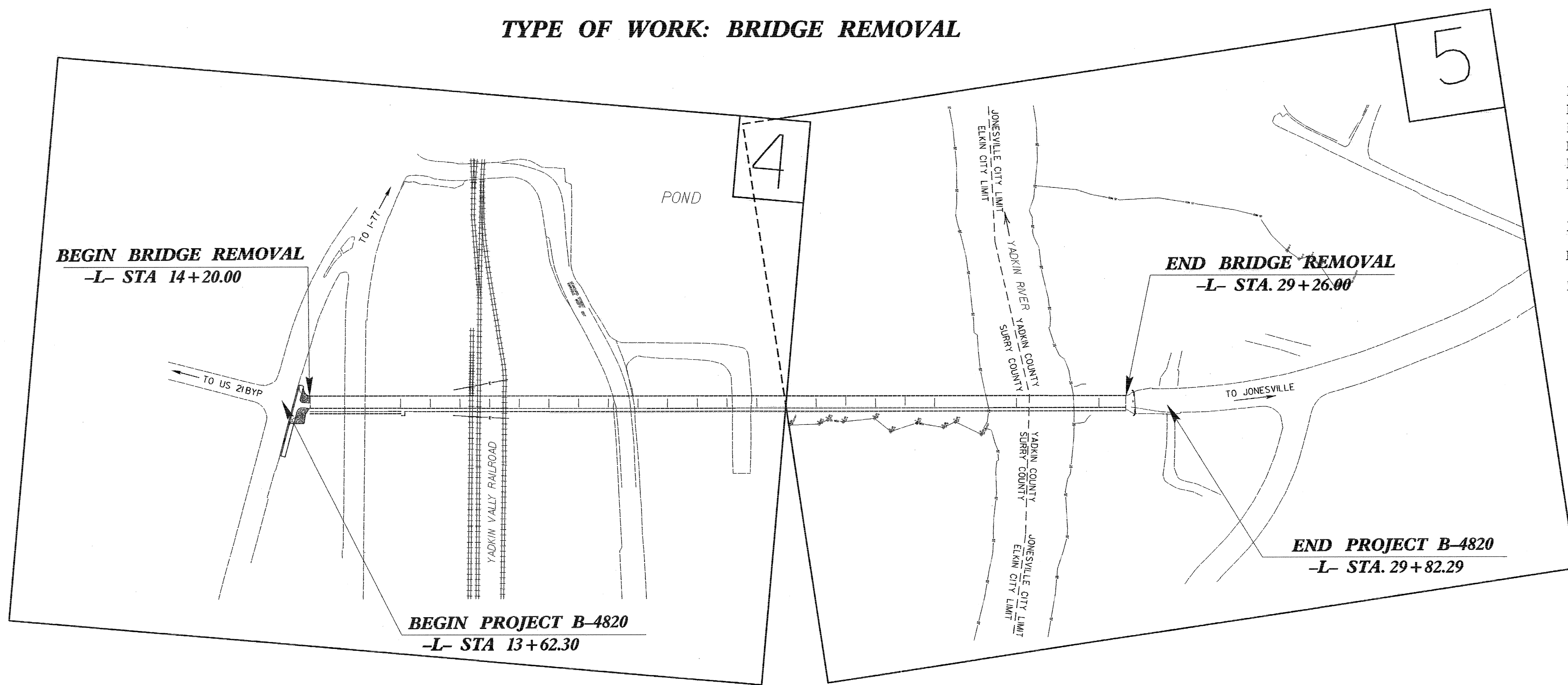


TIP PROJECT: B-4820

STATE OF NORTH CAROLINA
 DIVISION OF HIGHWAYS
 PLAN FOR PROPOSED
 HIGHWAY EROSION CONTROL
YADKIN & SURRY COUNTIES

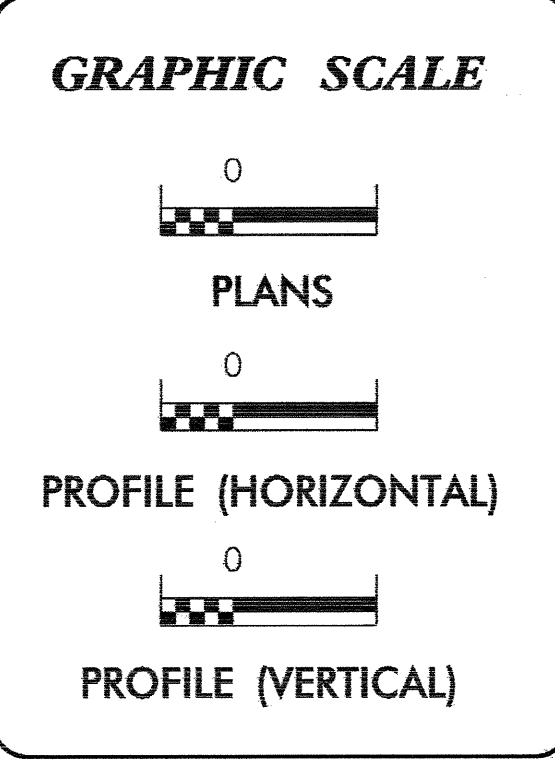
LOCATION: BRIDGE NO. 338 OVER YADKIN RIVER ON SR 1190
TYPE OF WORK: BRIDGE REMOVAL



STATE	STATE PROJECT REFERENCE NO.	SHEET NO.	TOTAL SHEETS
N.C.	B-4820	EC-1	
STATE PROJ. NO.	F.A. PROJ. NO.	DESCRIPTION	

EROSION AND SEDIMENT CONTROL MEASURES

Std. #	Description	Symbol
1630.03	Temporary Silt Ditch	TD
1630.05	Temporary Diversion	TD
1605.01	Temporary Silt Fence	III III III
1606.01	Special Sediment Control Fence	▲▲▲▲▲▲▲▲
1622.01	Temporary Berms and Slope Drains	▲
	Silt Basin Type B	▨
1633.01	Temporary Rock Silt Check Type-A	▨
	Temporary Rock Silt Check Type-A with Matting and Polyacrylamide (PAM)	▨
	Temporary Rock Silt Check Type-B	▶
	Wattle / Coir Fiber Wattle	⤵
	Wattle / Coir Fiber Wattle with Polyacrylamide (PAM)	⤵
1634.01	Temporary Rock Sediment Dam Type-A	▨
1634.02	Temporary Rock Sediment Dam Type-B	▨
1635.01	Rock Pipe Inlet Sediment Trap Type-A	⊓
1635.02	Rock Pipe Inlet Sediment Trap Type-B	⊓
1630.04	Stilling Basin	▭
1630.06	Special Stilling Basin	▭
	Rock Inlet Sediment Trap:	
1632.01	Type A	A
1632.02	Type B	B
1632.03	Type C	C
	Skimmer Basin	▭
	Tiered Skimmer Basin	▭
	Infiltration Basin	▭



ROADSIDE ENVIRONMENTAL UNIT
 DIVISION OF HIGHWAYS
 STATE OF NORTH CAROLINA

Prepared in the Office of:
ROADSIDE ENVIRONMENTAL UNIT
 1 South Wilmington St.
 Raleigh, NC 27611
2006 STANDARD SPECIFICATIONS

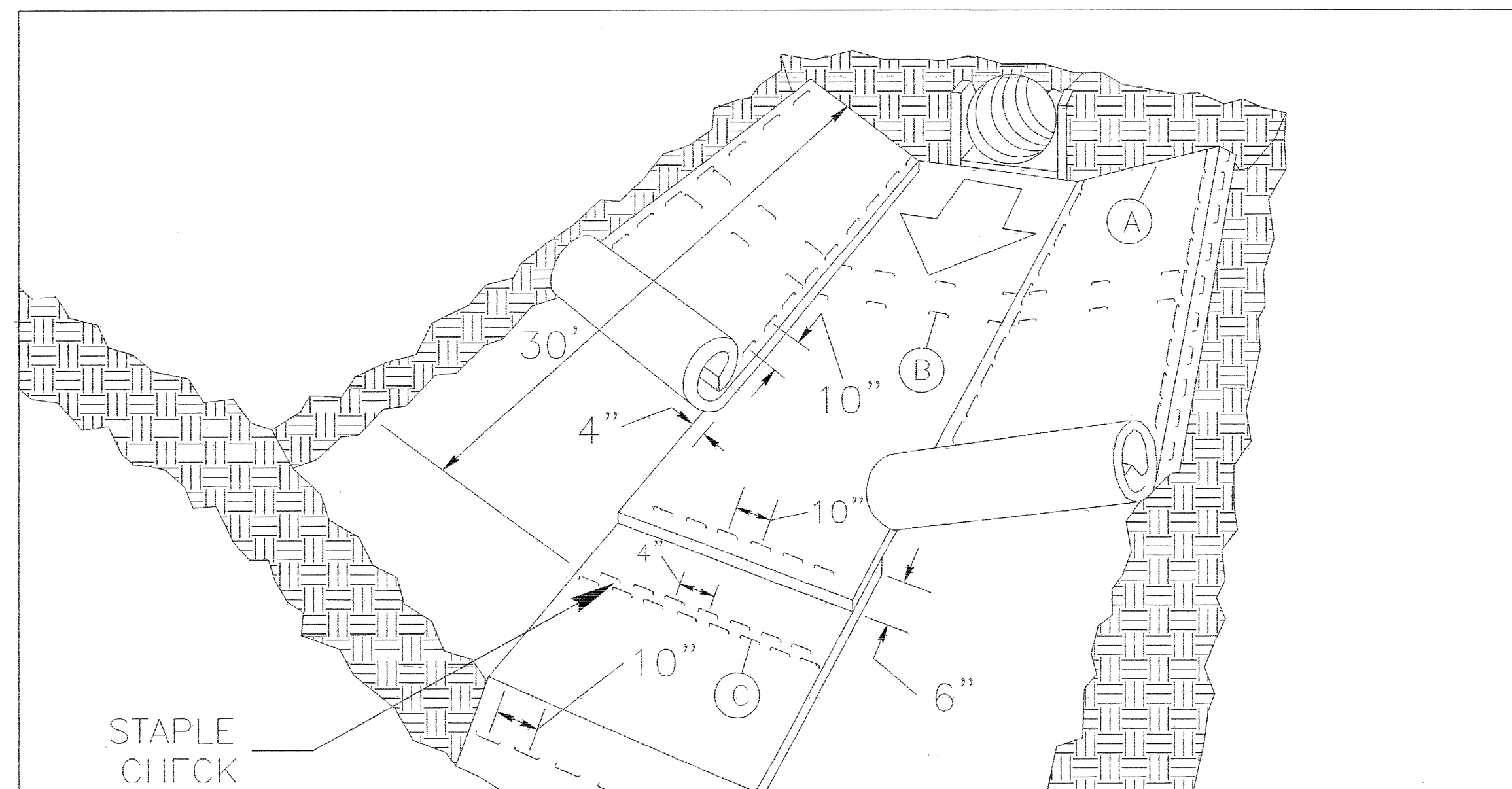
Roadway Standard Drawings

The following roadway english standards as appear in "Roadway Standard Drawings"- Roadway Design Unit - N. C. Department of Transportation - Raleigh, N. C., dated July 18, 2006 and the latest revision thereto are applicable to this project and by reference hereby are considered a part of these plans.

1605.01 Temporary Silt Fence
 1607.01 Gravel Construction Entrance
 1630.06 Special Stilling Basin
 1632.03 Rock Inlet Sediment Trap Type C
 1633.01 Temporary Rock Silt Check Type A
 1635.02 Rock Pipe Inlet Sediment Trap Type B

PROJECT REFERENCE NO. B-4820	SHEET NO. EC-2
RW SHEET NO.	
ROADWAY DESIGN ENGINEER	HYDRAULICS ENGINEER

MATTING INSTALLATION DETAIL



MATTING IN DITCHES

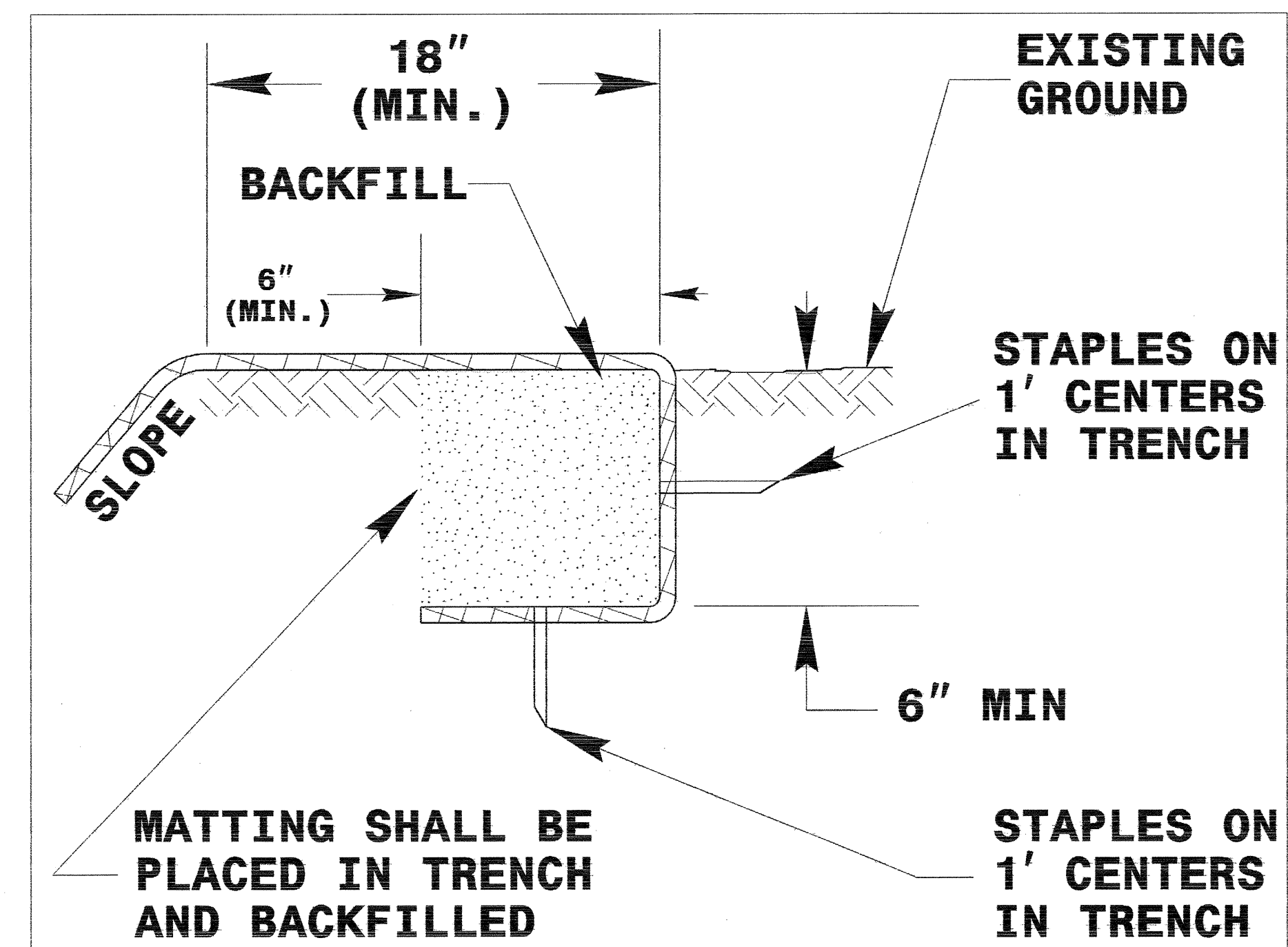
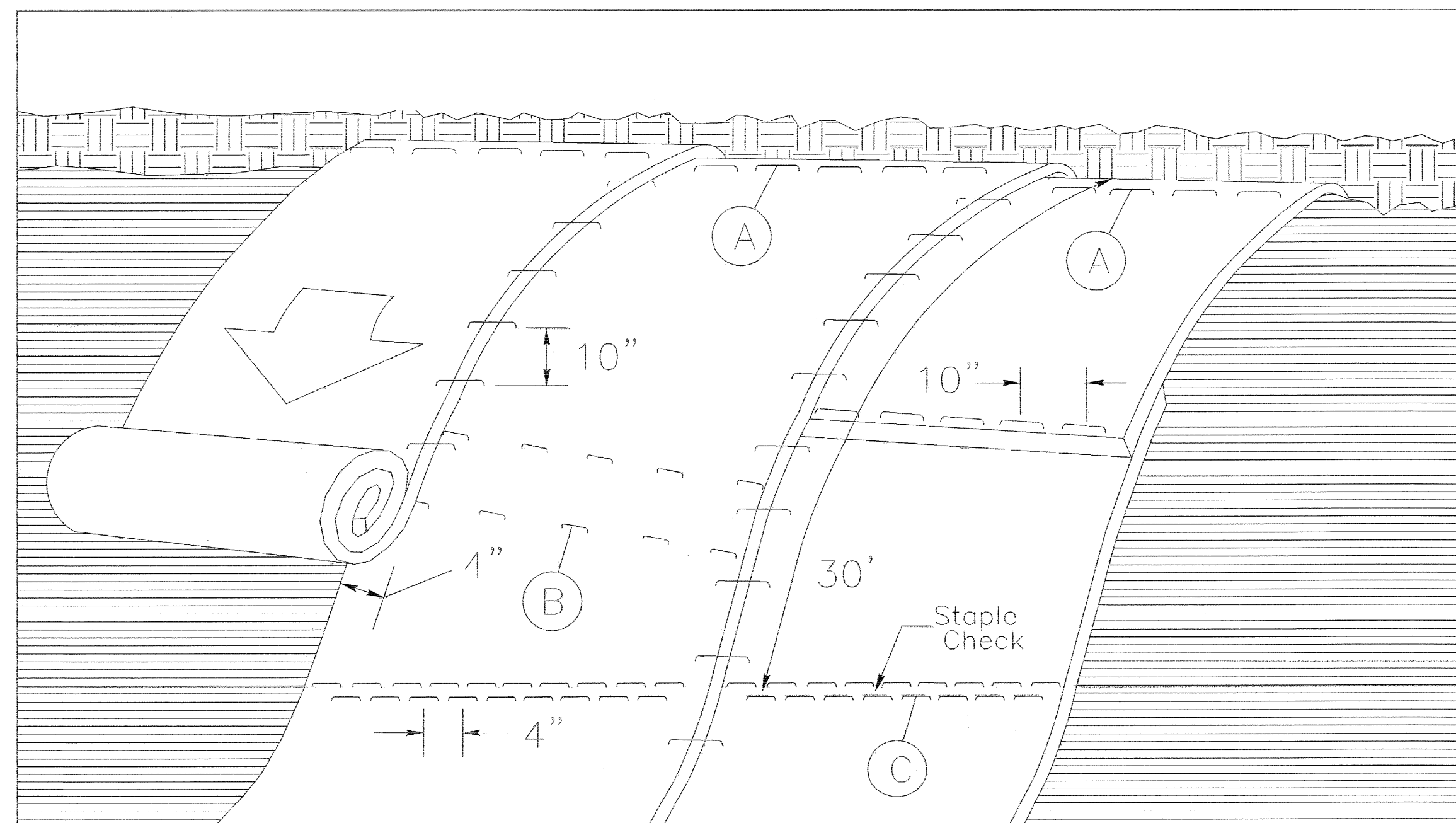


DIAGRAM (A)



MATTING ON SLOPES

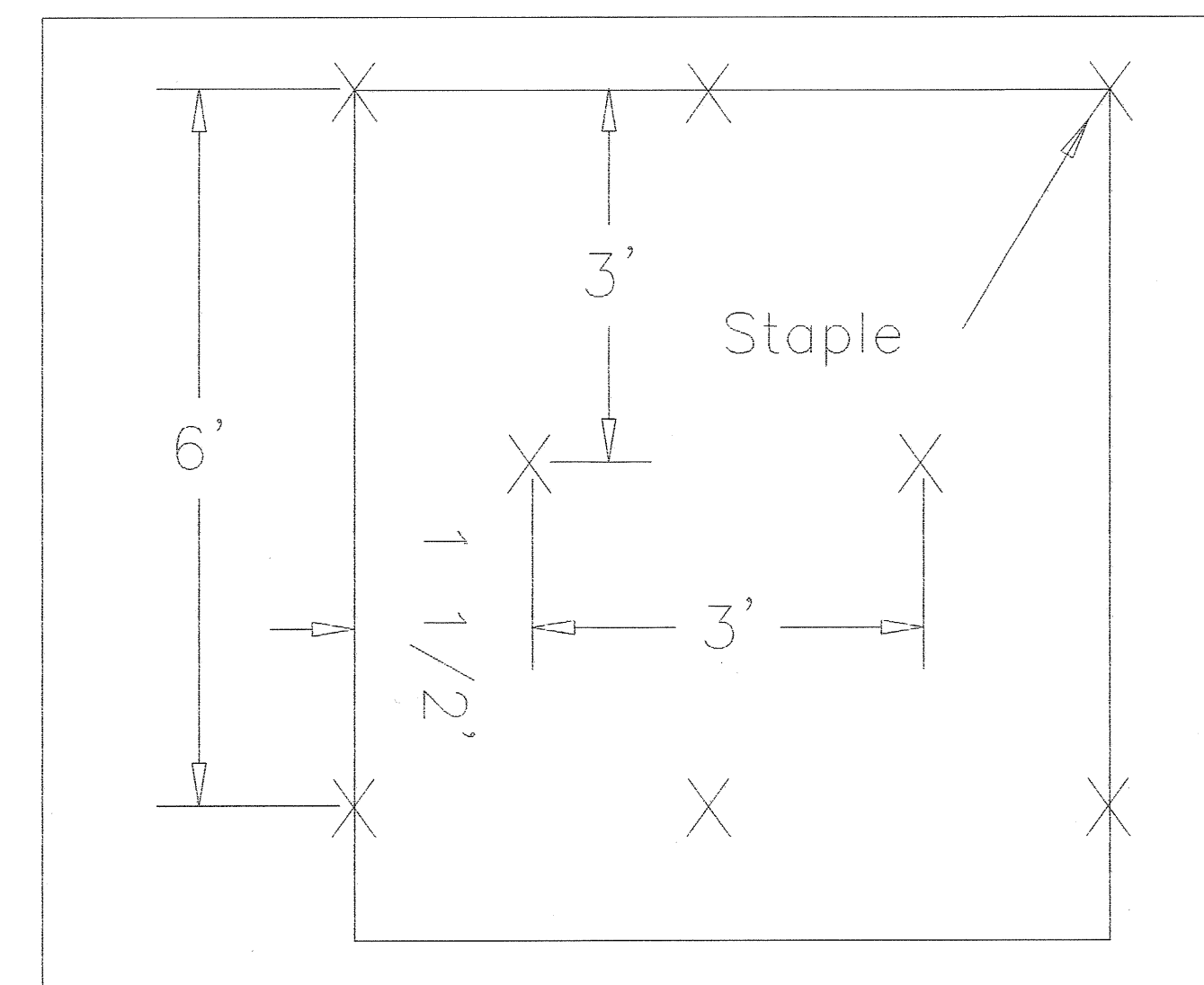


DIAGRAM (B)

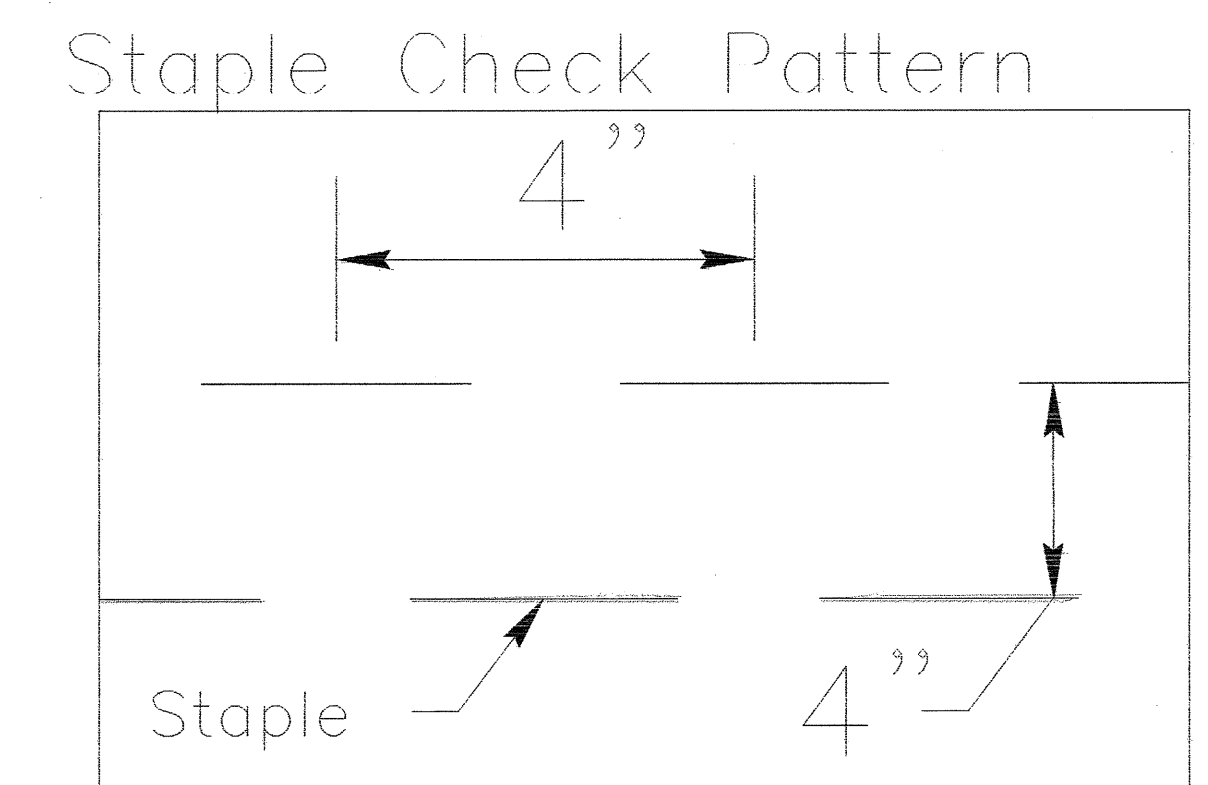


DIAGRAM (C)

NOTES:

THIS DETAIL APPLIES TO STRAW, EXCELSIOR, AND PERMANENT SOIL REINFORCEMENT MAT (PSRM) INSTALLATION.
 STAPLES SHALL BE NO. 11 GAUGE STEEL WIRE FORMED INTO A "U" SHAPE WITH A MINIMUM THROAT WIDTH OF 1 INCH AND NOT LESS THAN 6 INCHES IN LENGTH.

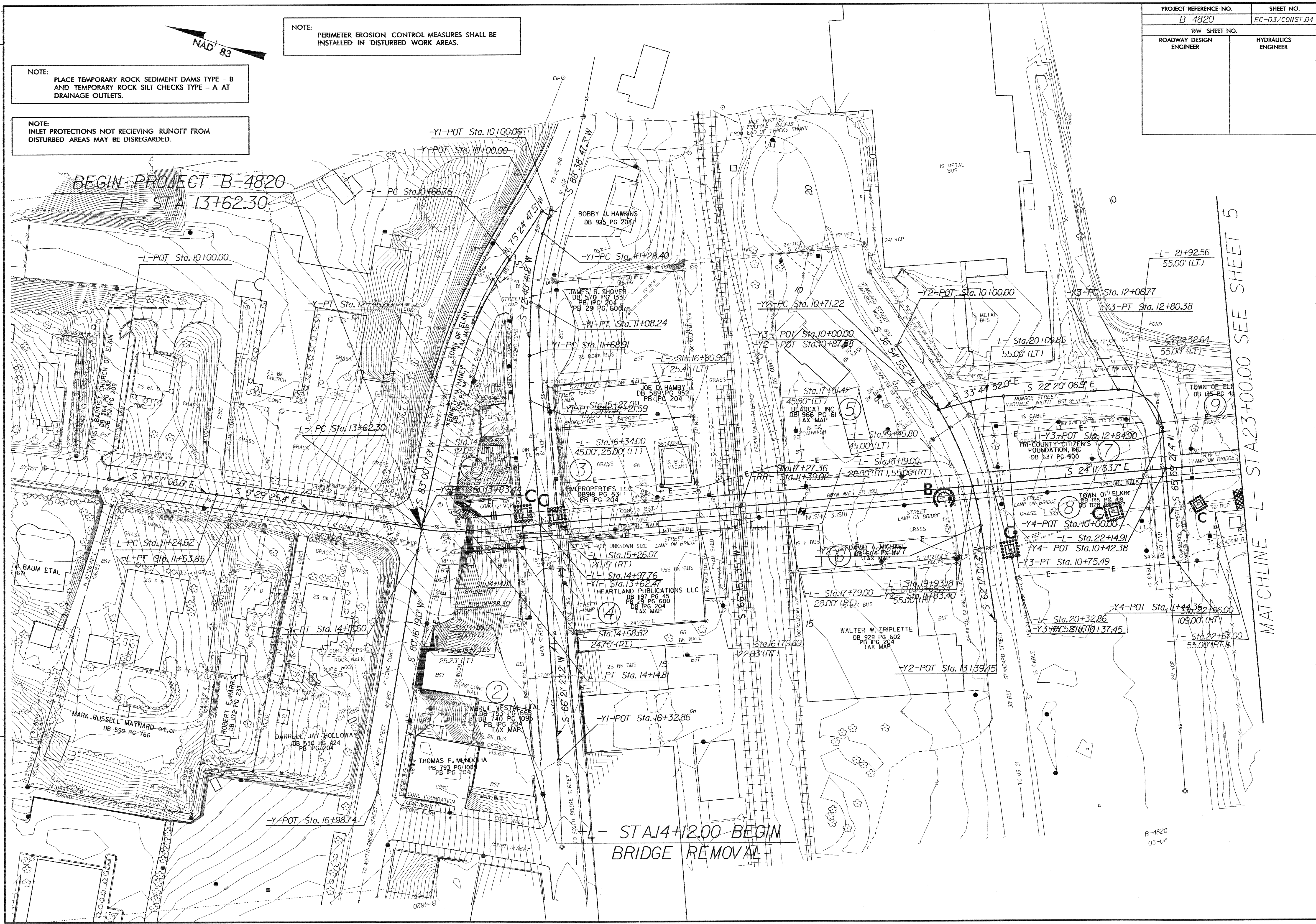
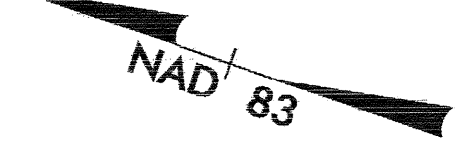
NOT TO SCALE

PROJECT REFERENCE NO.	SHEET NO.
B-4820	EC-03/CONST.04
R/W SHEET NO.	
ROADWAY DESIGN ENGINEER	HYDRAULICS ENGINEER

NOTE: PERIMETER EROSION CONTROL MEASURES SHALL BE INSTALLED IN DISTURBED WORK AREAS.

NOTE: PLACE TEMPORARY ROCK SEDIMENT DAMS TYPE - B AND TEMPORARY ROCK SILT CHECKS TYPE - A AT DRAINAGE OUTLETS.

NOTE: INLET PROTECTIONS NOT RECEIVING RUNOFF FROM DISTURBED AREAS MAY BE DISREGARDED.



REVISIONS

MATCHLINE - L - STA. 23+00.00 SEE SHEET 5

B-4820
03-04

PROJECT REFERENCE NO.	SHEET NO.
B-4820	EC-04/CONST.05
RW SHEET NO.	
ROADWAY DESIGN ENGINEER	HYDRAULICS ENGINEER

NOTE: PERIMETER EROSION CONTROL MEASURES SHALL BE INSTALLED IN DISTURBED WORK AREAS.

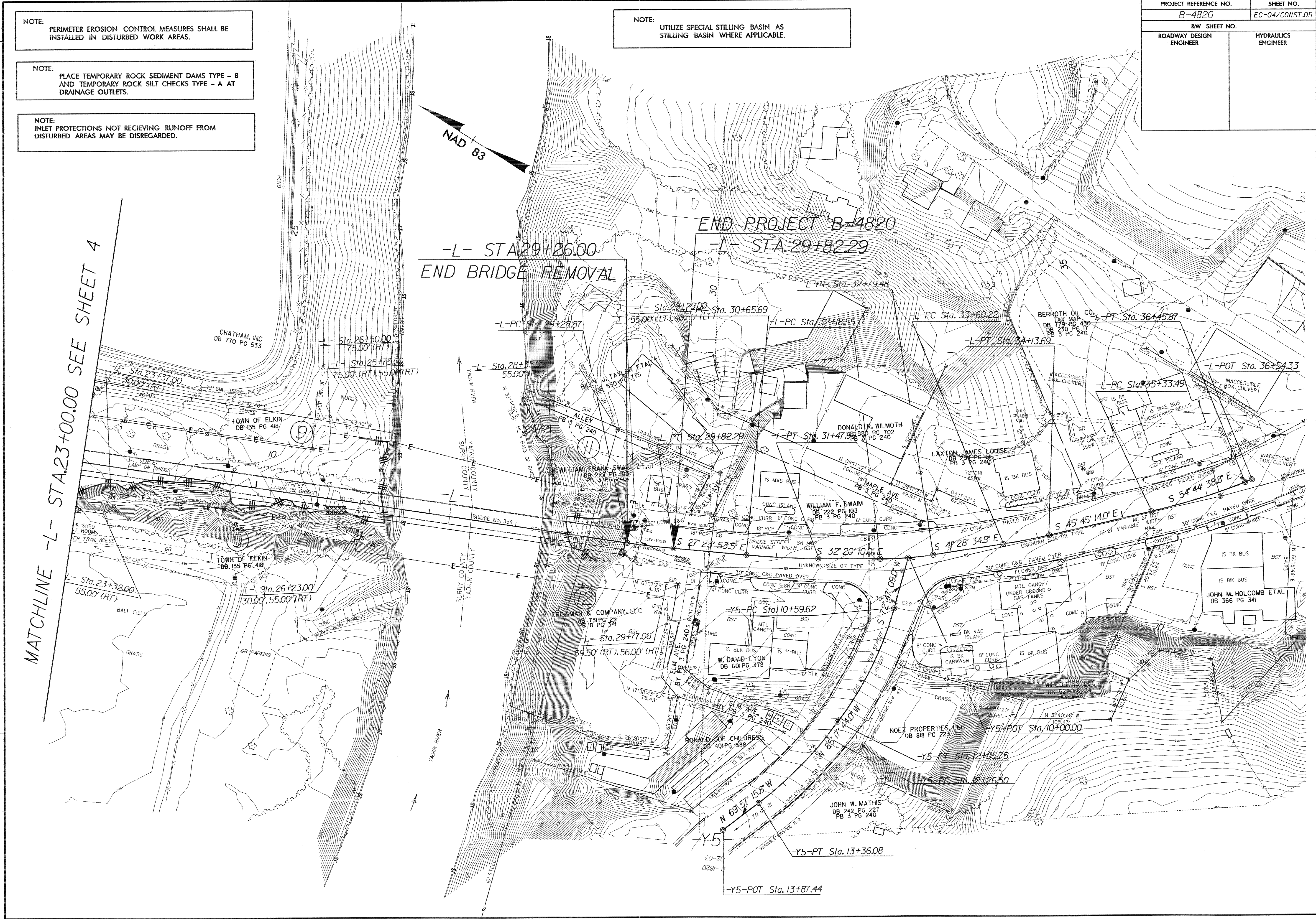
NOTE: PLACE TEMPORARY ROCK SEDIMENT DAMS TYPE - B AND TEMPORARY ROCK SILT CHECKS TYPE - A AT DRAINAGE OUTLETS.

NOTE: INLET PROTECTIONS NOT RECEIVING RUNOFF FROM DISTURBED AREAS MAY BE DISREGARDED.

NOTE: UTILIZE SPECIAL STILLING BASIN AS STILLING BASIN WHERE APPLICABLE.

REVISIONS

MATCHLINE -L- STA.23+00.00 SEE SHEET 4



END PROJECT B-4820
-L- STA.29+26.00
END BRIDGE REMOVAL
-L- STA.29+82.29

CHATHAM, INC
DB 770 PG 533

TOWN OF ELKIN
DB 135 PG 418

TOWN OF ELKIN
DB 135 PG 418

CRISMAN & COMPANY, LLC
DB 731 PG 25
PB 8 PG 341

Y5-PC Sta. 10+59.62

W. DAVID LYON
DB 601 PG 378

RONALD JOE CHILDRESS
DB 401 PG 588

JOHN W. MATHIS
DB 242 PG 227
PB 3 PG 240

WIL COHESSE, LLC
DB 127 PG 54

NOEY PROPERTIES, LLC
DB 818 PG 223

Y5-PT Sta. 12+05.75

Y5-PC Sta. 12+26.50

Y5-PT Sta. 13+36.08

Y5-POT Sta. 13+87.44

BERROTH OIL CO.
DB 230 PG 17
PB 3 PG 240

L-PC Sta. 35+33.49

L-PT Sta. 34+13.69

S 54°44'38" E

S 45°45'14" E

S 4°28'34" E

Y5-POT Sta. 10+00.00

Y5-PT Sta. 12+05.75

Y5-PC Sta. 12+26.50

L-PT Sta. 36+45.87

L-PC Sta. 36+54.33

S 54°44'38" E

S 45°45'14" E

S 4°28'34" E

Y5-POT Sta. 10+00.00

Y5-PT Sta. 12+05.75

Y5-PC Sta. 12+26.50

Y5-POT Sta. 13+87.44

Y5-PT Sta. 13+36.08

Y5-PC Sta. 10+59.62

Y5-PT Sta. 12+05.75

Y5-PC Sta. 12+26.50

Y5-POT Sta. 13+87.44

Y5-PT Sta. 13+36.08

Y5-PC Sta. 10+59.62

Y5-PT Sta. 12+05.75

Y5-PC Sta. 12+26.50

Y5-POT Sta. 13+87.44

Y5-PT Sta. 13+36.08

Y5-PC Sta. 10+59.62

Y5-PT Sta. 12+05.75

Y5-PC Sta. 12+26.50

Y5-POT Sta. 13+87.44

Y5-PT Sta. 13+36.08

Y5-PC Sta. 10+59.62

Y5-PT Sta. 12+05.75

Y5-PC Sta. 12+26.50

Y5-POT Sta. 13+87.44

Y5-PT Sta. 13+36.08

Y5-PC Sta. 10+59.62

Y5-PT Sta. 12+05.75

Y5-PC Sta. 12+26.50

Y5-POT Sta. 13+87.44

Y5-PT Sta. 13+36.08

Y5-PC Sta. 10+59.62

Y5-PT Sta. 12+05.75

Y5-PC Sta. 12+26.50

Y5-POT Sta. 13+87.44

Y5-PT Sta. 13+36.08

Y5-PC Sta. 10+59.62

Y5-PT Sta. 12+05.75

Y5-PC Sta. 12+26.50

Y5-POT Sta. 13+87.44

Y5-PT Sta. 13+36.08

Y5-PC Sta. 10+59.62

Y5-PT Sta. 12+05.75

Y5-PC Sta. 12+26.50

Y5-POT Sta. 13+87.44

Y5-PT Sta. 13+36.08

Y5-PC Sta. 10+59.62

Y5-PT Sta. 12+05.75

Y5-PC Sta. 12+26.50

Y5-POT Sta. 13+87.44

Y5-PT Sta. 13+36.08

Y5-PC Sta. 10+59.62

Y5-PT Sta. 12+05.75

Y5-PC Sta. 12+26.50

Y5-POT Sta. 13+87.44

Y5-PT Sta. 13+36.08