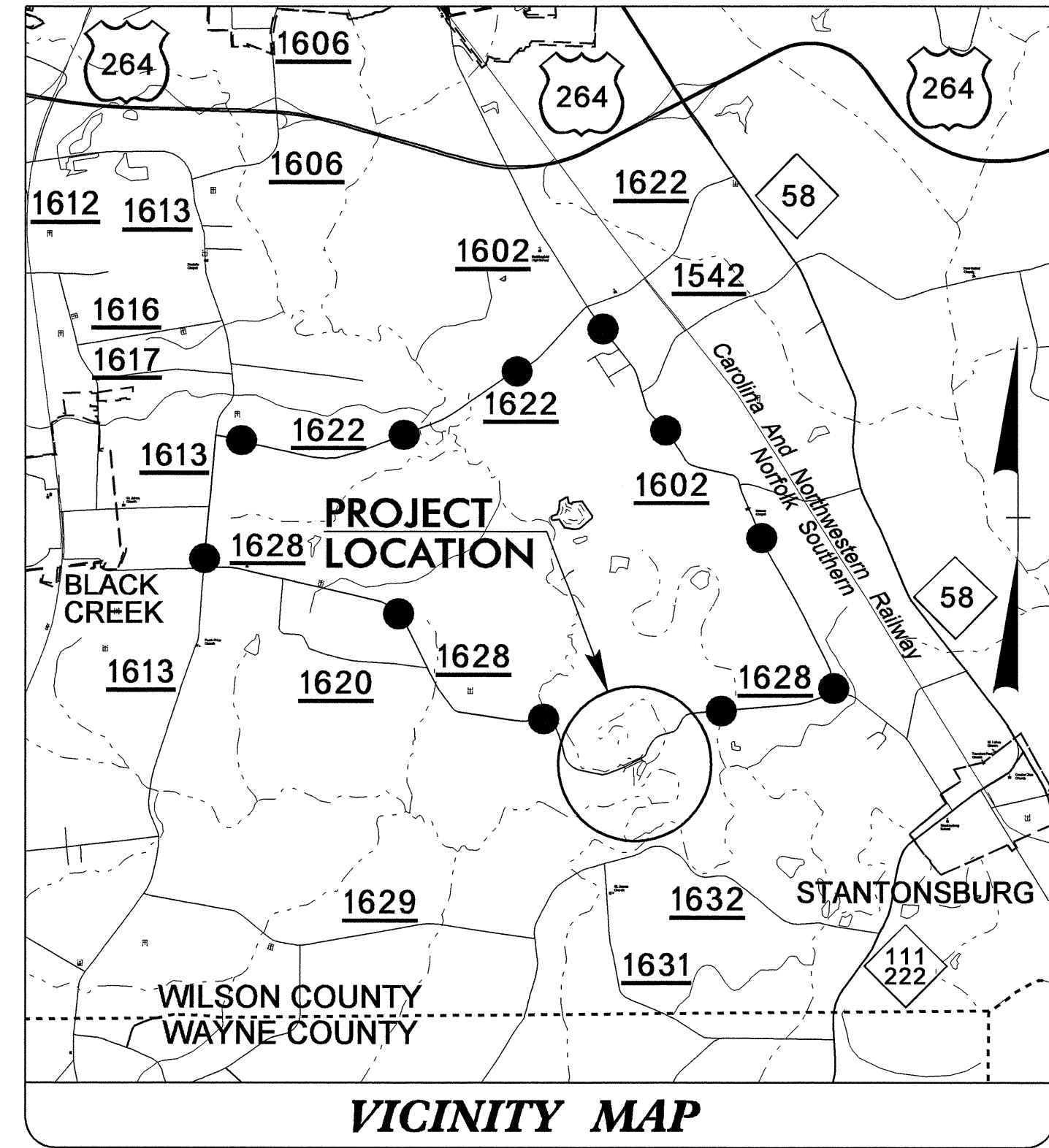


15-SEP-2009 07:29
 P:\UTILITIES\rdy\proj\4682\ut_l_uo1_tsh.dgn
 \$\$\$USERNAME\$\$\$

TIP B-4682

See Sheet 1-A For Index of Sheets



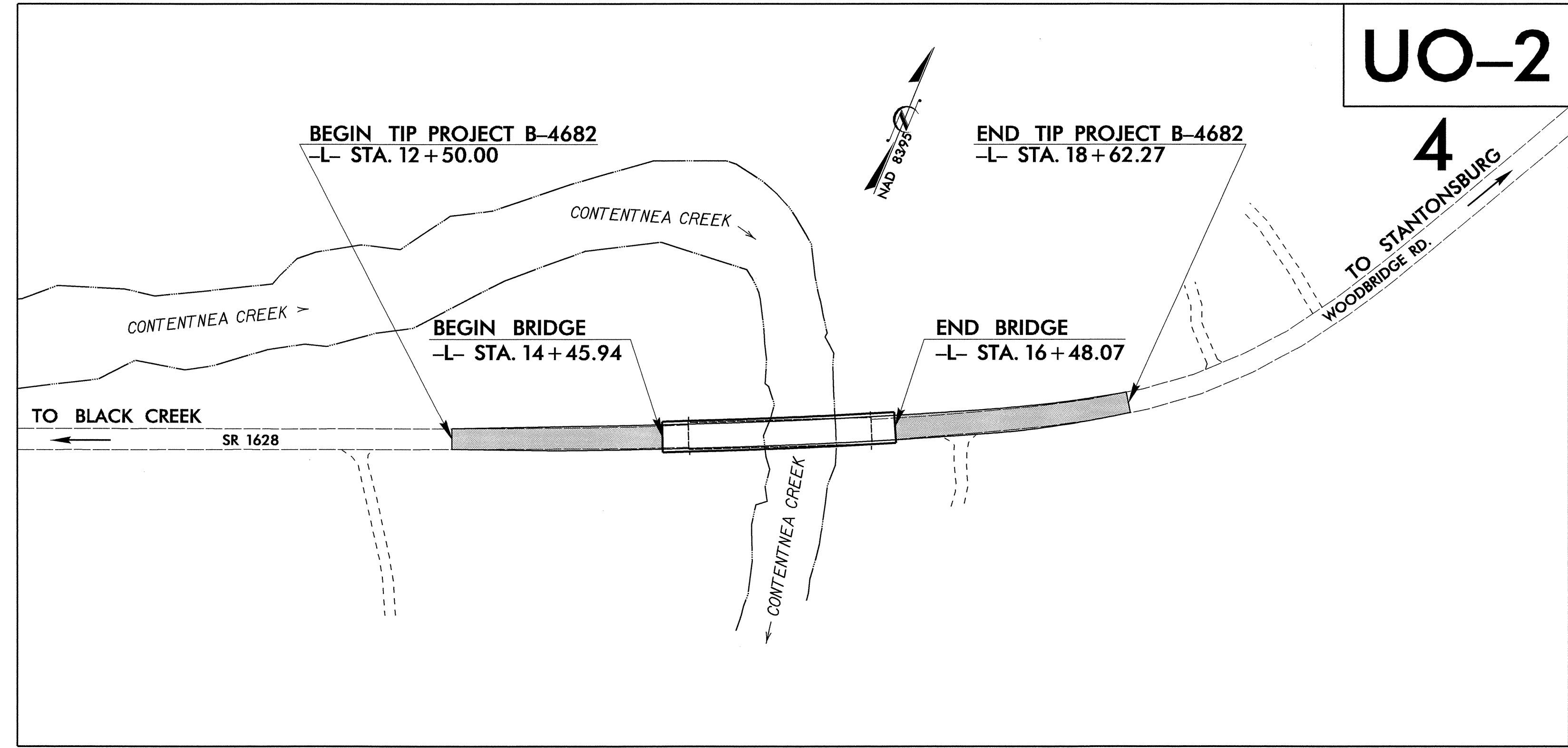
STATE OF NORTH CAROLINA
 DIVISION OF HIGHWAYS

T.I.P. NO.	SHEET NO.
B-4682	UO-1

**UTILITIES BY OTHERS PLANS
 WILSON COUNTY**

LOCATION: BRIDE NO.2 ON SR 1628 (WOOD-BRIDGE ROAD) OVER CONTENTNEA CREEK

TYPE OF WORK: UTILITIES



INDEX OF SHEETS	
SHEET NO.	DESCRIPTION
UO-1	TITLE SHEET
UO-2	UTILITIES BY OTHERS PLAN SHEET

UTILITY OWNERS ON PROJECT
(1) TOWN OF STANTONSBURG (POWER)
(2) EMBARQ (TELEPHONE)
(3) PROGRESS ENERGY

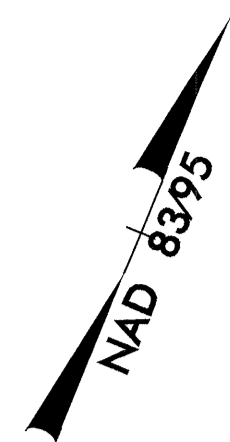
PREPARED IN THE OFFICE OF:
**DIVISION OF HIGHWAYS
 UTILITIES ENGINEERING
 SECTION**

1591 MAIL SERVICES CENTER
 RALEIGH NC 27699-1591
 PHONE (919) 250-4128
 FAX (919) 250-4119

Roger Worthington, P.E. UTILITIES SECTION ENGINEER
Steve McKee, P.E. UTILITIES SQUAD LEADER PROJECT ENGINEER
Alonza Yancey UTILITIES PROJECT DESIGNER

UTILITIES BY OTHERS

NOTE:
ALL PROPOSED UTILITY WORK
SHOWN ON THIS SHEET WILL
BE DONE BY OTHERS



BEGIN STATE PROJECT B-4682
-L- STA. 12+50.00

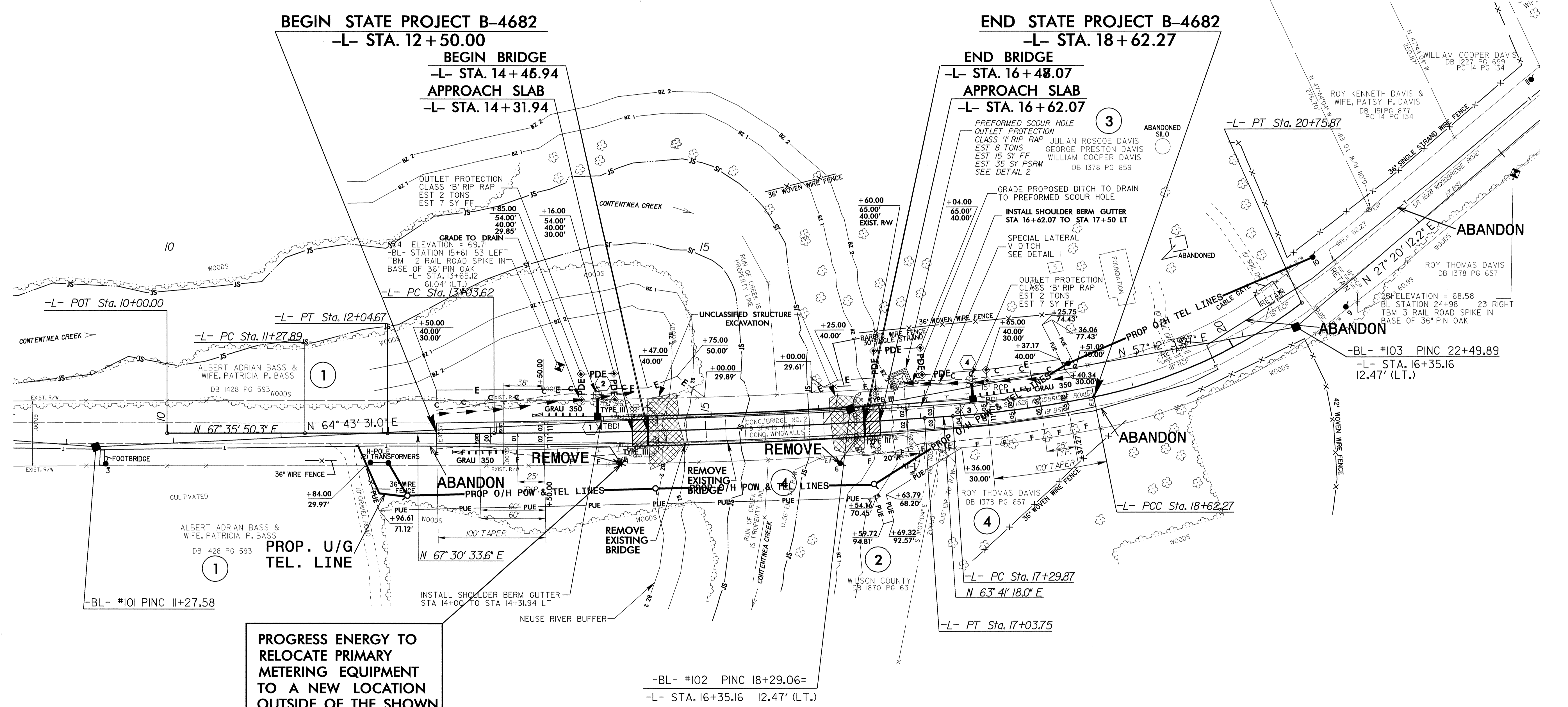
END STATE PROJECT B-4682
-L- STA. 18+62.27

BEGIN BRIDGE
-L- STA. 14+46.94

END BRIDGE
-L- STA. 16+48.07

APPROACH SLAB
-L- STA. 14+31.94

APPROACH SLAB
-L- STA. 16+62.07



PROGRESS ENERGY TO
RELOCATE PRIMARY
METERING EQUIPMENT
TO A NEW LOCATION
OUTSIDE OF THE SHOWN
CONSTRUCTION AREA
(OFF PLANSHEET)

-BL- #102 PINC 18+29.06=
-L- STA. 16+35.16 12.47' (LT.)

NOTE: SEE SHEET NO. 5 FOR -L- PROFILE
SEE SHEET S-I THRU S- FOR STRUCTURE PLANS
TRAFFIC IS TO BE MAINTAINED WITH AN OFF SITE DETOUR

REVISIONS

5/14/99

15-SEP-2009 07:31
r:\ut\17-2009-07-31
r:\ut\17-2009-07-31\17-2009-07-31-02.dgn