

STATE OF NORTH CAROLINA
DIVISION OF HIGHWAYS

STATE PROJECT REFERENCE NO.	SHEET NO.
B-4610	TCP-1

**PLAN FOR PROPOSED
TRAFFIC CONTROL, MARKING & DELINEATION
RANDOLPH COUNTY**

B-4610

ROADWAY STANDARD DRAWINGS

THE FOLLOWING ROADWAY STANDARDS AS APPEAR IN "ROADWAY STANDARD DRAWINGS" - PROJECT SERVICES UNIT-N.C. DEPARTMENT OF TRANSPORTATION-RALEIGH, N.C., DATED JULY 2006 ARE APPLICABLE TO THIS PROJECT AND BY REFERENCE HEREBY ARE CONSIDERED A PART OF THESE PLANS:

STD. NO.	TITLE
1101.03	TEMPORARY ROAD CLOSURES
1101.11	TRAFFIC CONTROL DESIGN TABLES
1110.01	STATIONARY WORK ZONE SIGNS
1145.01	BARRICADES

INDEX OF SHEETS

SHEET NO.	TITLE
TCP-1	LIST OF APPLICABLE ROADWAY STANDARD DRAWINGS, LEGEND AND INDEX OF SHEETS
TCP-2	PROJECT NOTES AND PHASING
TCP-3	OFFSITE DETOUR SIGNING AND ROAD CLOSURE SIGNING
SD-1	SPECIAL SIGN DESIGN

LEGEND

- GENERAL**
- DIRECTION OF TRAFFIC FLOW
 - NORTH ARROW
 - PROPOSED PVMT. EXIST. PVMT.
 - WORK AREA
 - REMOVAL OF EXISTING PAVEMENT
- TRAFFIC CONTROL DEVICES**
- TYPE I BARRICADE
 - TYPE II BARRICADE
 - TYPE III BARRICADE
 - CONE
 - DRUM SKINNY DRUM
 - FLASHING ARROW PANEL (TYPE C)
 - STATIONARY SIGN
 - PORTABLE SIGN
 - STATIONARY OR PORTABLE SIGN
 - CRASH CUSHION
 - CHANGEABLE MESSAGE SIGN
 - TRUCK MOUNTED IMPACT ATTENUATOR (TMIA)
 - POLICE
 - FLAGGER
- PAVEMENT MARKINGS**
- CRYSTAL/CRYSTAL PAVEMENT MARKER
 - YELLOW/YELLOW PAVEMENT MARKER
 - CRYSTAL/RED PAVEMENT MARKER
 - PAVEMENT MARKING SYMBOLS

TIP PROJECT:

07-DEC-2009 12:23
\\dot\server\0010\proj\Hipp\projects-b\4610\trafficcontrol\top\b-4610_tc_tcp_1.dgn
spjennings AT WZTC2473

APPROVED: DATE:	PLAN PREPARED BY: N.C.D.O.T. WORK ZONE TRAFFIC CONTROL SECTION
	STUART BORNE, P.E. TRAFFIC CONTROL ENGINEER
	JOSEPH ISHAK, P.E. TRAFFIC CONTROL PROJECT ENGINEER
	J. L. PORTANOVA, P.E. TRAFFIC CONTROL PROJECT DESIGN ENGINEER
	SPENCER JENNINGS TRAFFIC CONTROL DESIGN ENGINEER / TECHNICIAN

PROJ. REFERENCE NO.	SHEET NO.
B-4610	TCP-2

PROJECT NOTES

CHANGES MAY BE REQUIRED WHEN PHYSICAL DIMENSIONS IN THE DETAIL DRAWINGS, STANDARD DETAILS, AND ROADWAY DETAILS ARE NOT ATTAINABLE TO MEET FIELD CONDITIONS OR RESULT IN DUPLICATE OR UNDESIRED OVERLAPPING OF DEVICES. MODIFICATION MAY INCLUDE: MOVING, SUPPLEMENTING, COVERING, OR REMOVAL OF DEVICES AS DIRECTED BY THE ENGINEER.

THE FOLLOWING GENERAL NOTES APPLY AT ALL TIMES FOR THE DURATION OF THE CONSTRUCTION PROJECT EXCEPT WHEN OTHERWISE NOTED IN THE PLAN OR DIRECTED BY THE ENGINEER.

TRAFFIC PATTERN ALTERATIONS

- A) NOTIFY THE ENGINEER TWENTY ONE (21) CALENDAR DAYS PRIOR TO ANY TRAFFIC PATTERN ALTERATION.

SIGNING

- B) PROVIDE PERMANENT SIGNING.
 C) PROVIDE SIGNING AND DEVICES REQUIRED TO CLOSE ROAD ACCORDING TO THE ROADWAY STANDARD DRAWINGS AND TRAFFIC CONTROL PLANS.

PROVIDE SIGNING REQUIRED FOR THE OFF-SITE DETOUR ROUTE AS SHOWN IN THE TRAFFIC CONTROL PLANS.

- D) COVER OR REMOVE ALL SIGNS AND DEVICES REQUIRED TO CLOSE THE ROAD WHEN ROAD CLOSURE IS NOT IN OPERATION.

COVER OR REMOVE ALL SIGNS REQUIRED FOR THE OFF-SITE DETOUR WHEN THE DETOUR IS NOT IN OPERATION.

- E) ENSURE ALL NECESSARY SIGNING IS IN PLACE PRIOR TO ALTERING ANY TRAFFIC PATTERN.

TRAFFIC CONTROL DEVICES

- F) PLACE TYPE III BARRICADES, WITH "ROAD CLOSED" SIGN R11-2 ATTACHED, OF SUFFICIENT LENGTH TO CLOSE ENTIRE ROADWAY.

PHASING

NOTE: MAINTAIN ACCESS TO ALL DRIVEWAYS AT ALL TIMES DURING CONSTRUCTION.

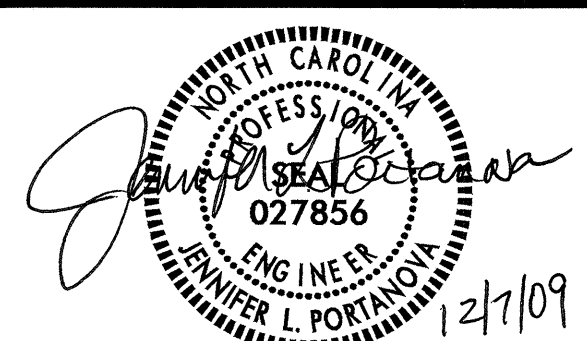
STEP 1: USING RSD 1101.03 SHEET 1 OF 9, SHEETS TCP-3 AND SD-1, INSTALL DETOUR SIGNS AND PLACE TYPE III BARRICADES TO CLOSE SR 1518 (LAKE LUCAS RD) TO THRU TRAFFIC AND DETOUR TRAFFIC ONTO PROPOSED DETOUR.

STEP 2: AWAY FROM TRAFFIC, PERFORM THE FOLLOWING:

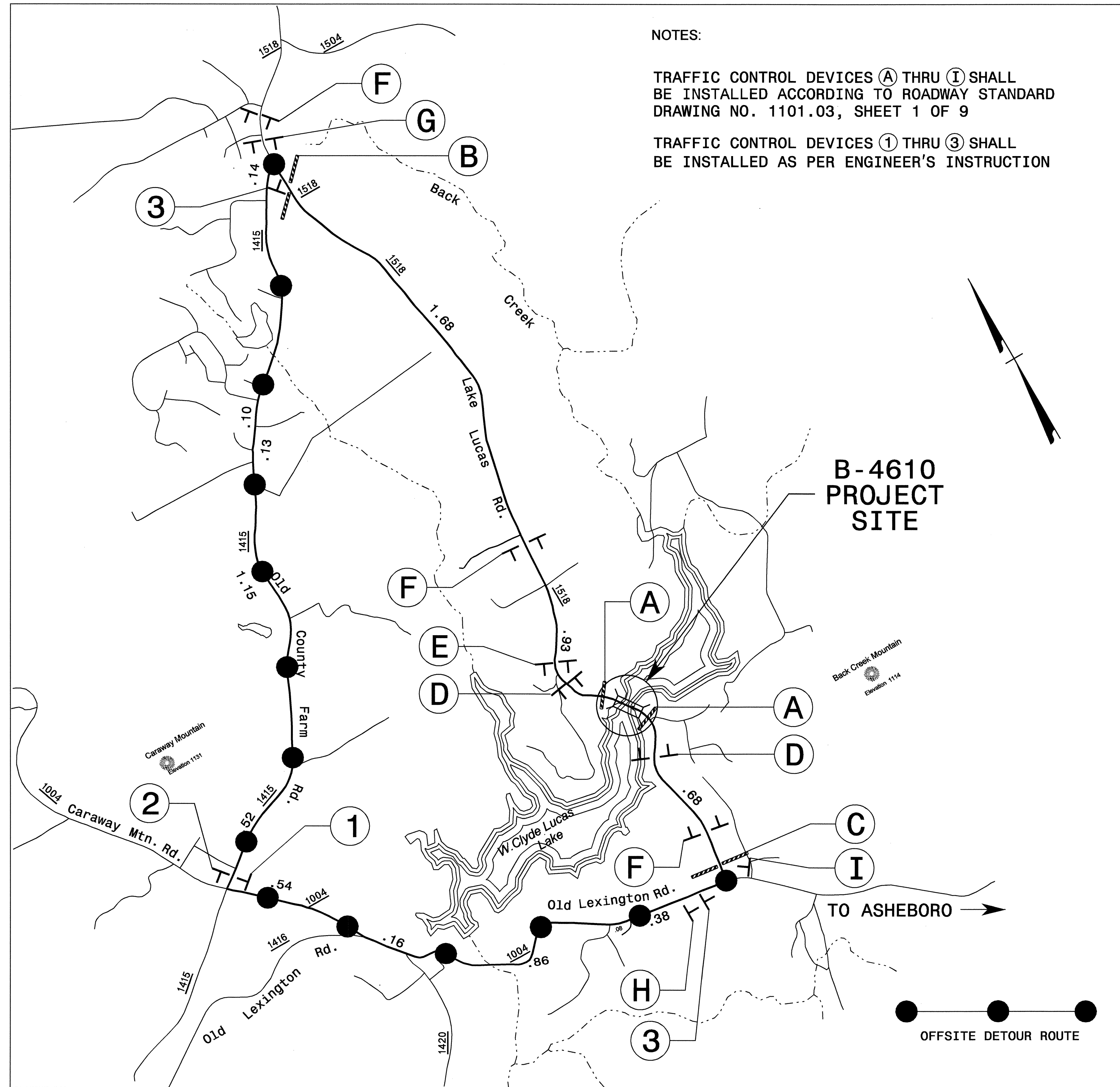
- REMOVE EXISTING STRUCTURE NO. 73 AND CONSTRUCT PROPOSED STRUCTURE FROM -L- STA. 17+80 TO -L- STA. 20+20. SEE ROADWAY AND STRUCTURE PLANS.
- CONSTRUCT PROPOSED -L- UP TO AND INCLUDING THE FINAL LAYER OF SURFACE COURSE.
- PLACE FINAL PAVEMENT MARKINGS FROM -L- STA. 14+35+/- TO -L- STA. 26+00 AND TIE INTO EXISTING MARKINGS.

STEP 3: REMOVE ALL TRAFFIC CONTROL DEVICES AND DETOUR SIGNING AND OPEN SR 1516 (LAKE LUCAS RD) TO PROPOSED TWO-LANE, TWO-WAY TRAFFIC PATTERN.

07-DEC-2009 10:58
 \\dot\dfs\oof\proj\1\proj\traffic\trafficcontrol\tcp\B-4610_TC_TCP_2.dgn
 sbjennings AT WZTC244731

APPROVED: _____ DATE: _____ 	PROJECT NOTES AND PHASING										
SCALE: NONE DATE: DEC 09 DWG. BY: SBJ DESIGN BY: SBJ REVIEWED BY: JLP	<table border="1" style="width: 100%; border-collapse: collapse;"> <thead> <tr> <th style="width: 50%;">REVISIONS</th> <th style="width: 50%;"></th> </tr> </thead> <tbody> <tr><td> </td><td> </td></tr> <tr><td> </td><td> </td></tr> <tr><td> </td><td> </td></tr> <tr><td> </td><td> </td></tr> </tbody> </table>	REVISIONS									
REVISIONS											

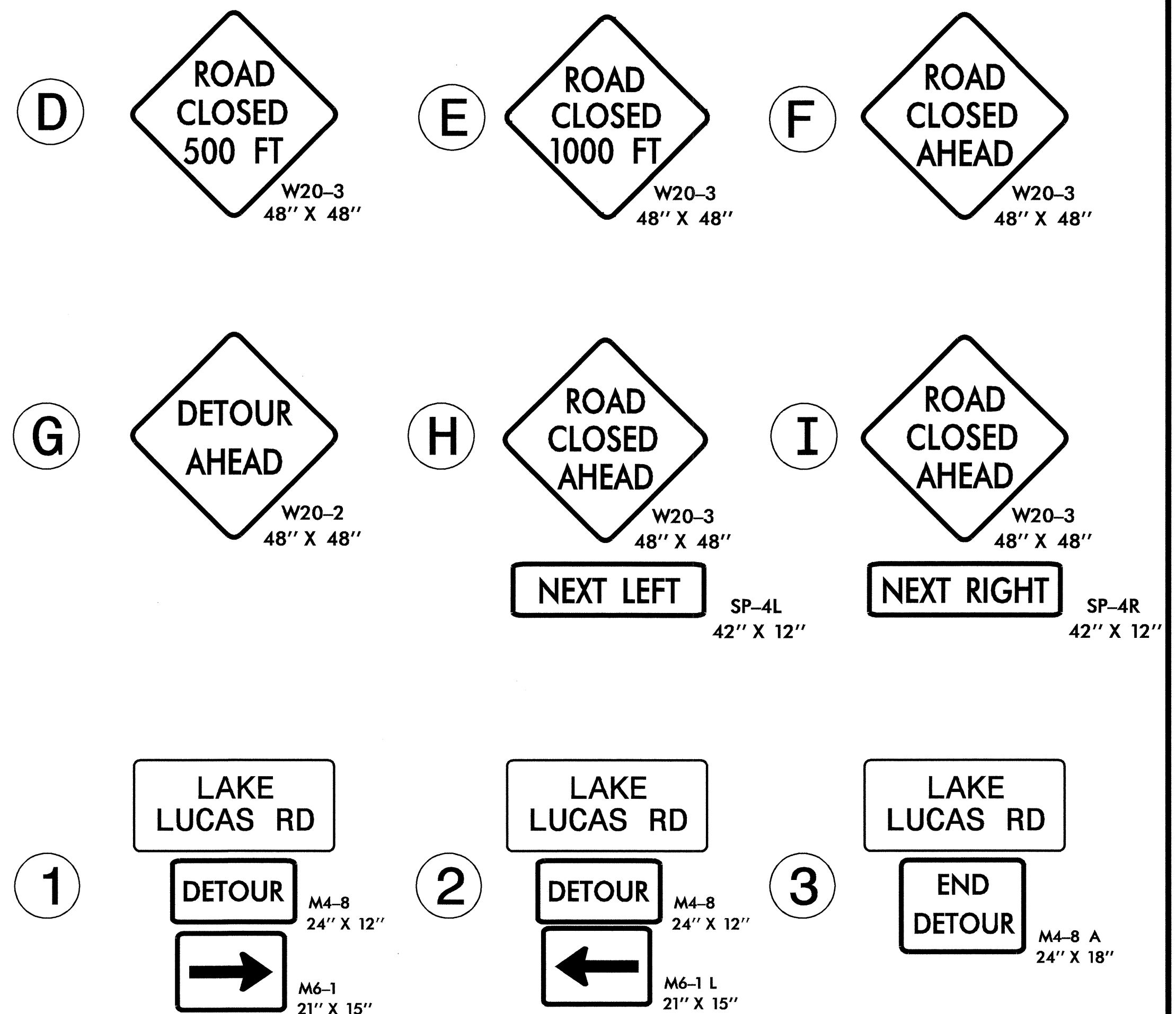
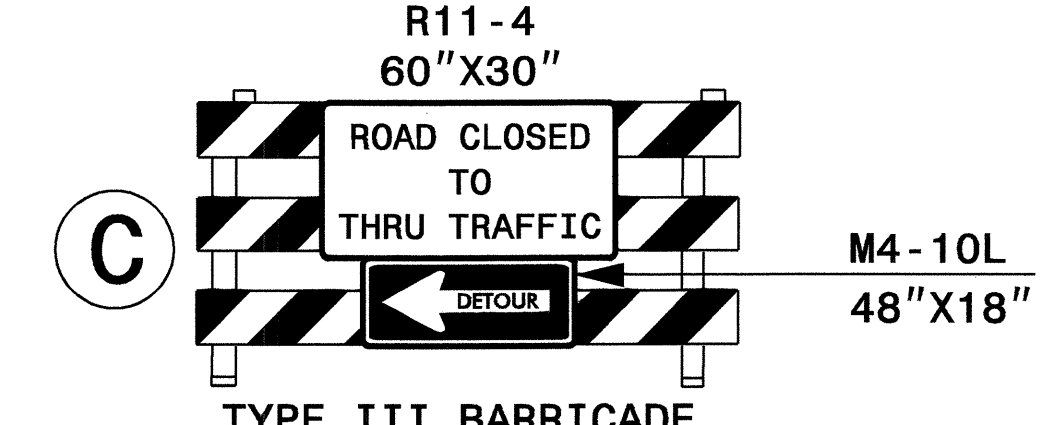
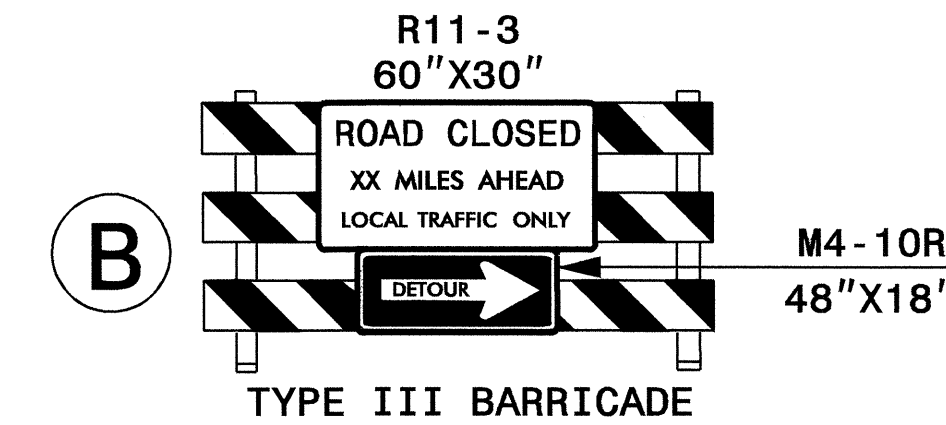
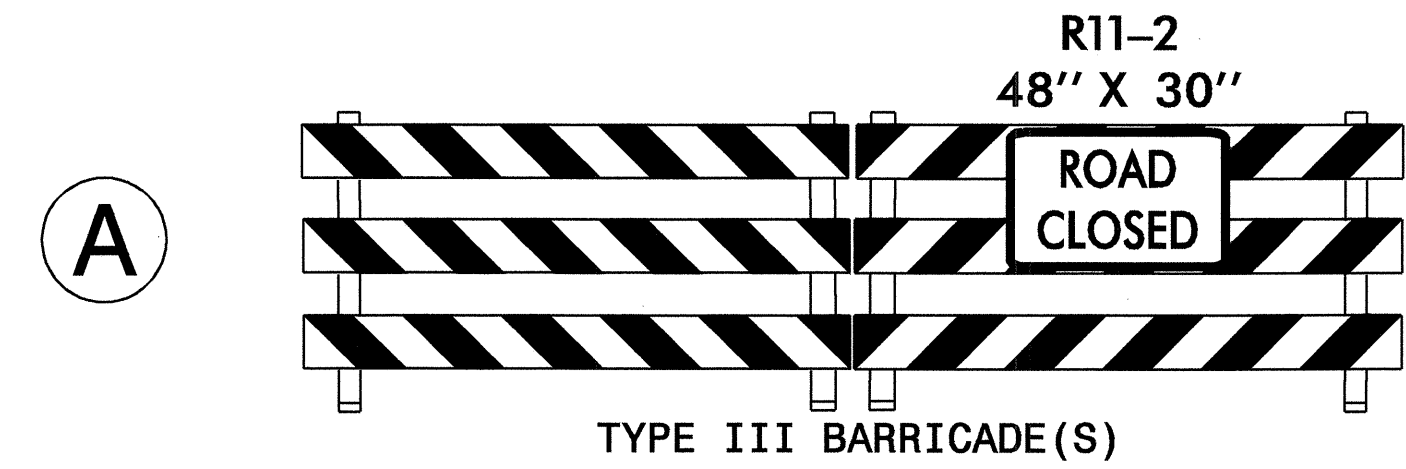
RANDOLPH COUNTY



NOTES:

TRAFFIC CONTROL DEVICES (A) THRU (I) SHALL BE INSTALLED ACCORDING TO ROADWAY STANDARD DRAWING NO. 1101.03, SHEET 1 OF 9

TRAFFIC CONTROL DEVICES (1) THRU (3) SHALL BE INSTALLED AS PER ENGINEER'S INSTRUCTION



APPROVED: _____ DATE: _____	OFFSITE DETOUR SIGNING AND ROAD CLOSURE SIGNING	
	SCALE: NONE	
	DATE: DEC 09	
	DWG. BY: SBJ	
	DESIGN BY: SBJ	
REVIEWED BY: JLP	REVISIONS	

07-DEC-2009 10:58
 \\dot\dfsroot\proj\trafficcontrol\tcp\B-4610_TC_TCP_3.dgn
 sbjennings