

EROSION AND SEDIMENT CONTROL MEASURES

Std. #	Description	Symbol
1630.05	Temporary Silt Ditch	
1630.05	Temporary Diversion	
1605.01	Temporary Silt Fence	
1606.01	Special Sediment Control Fence	
1622.01	Temporary Berms and Slope Drains	
	Silt Basin Type B	
1633.01	Temporary Rock Silt Check Type-A	
	Temporary Rock Silt Check Type-A with Matting and Polyacrylamide (PAM)	
	Temporary Rock Silt Check Type-B	
	Waffle / Coir Fiber Waffle	
	Waffle / Coir Fiber Waffle with Polyacrylamide (PAM)	
1634.01	Temporary Rock Sediment Dam Type-A	
1634.02	Temporary Rock Sediment Dam Type-B	
1635.01	Rock Pipe Inlet Sediment Trap Type-A	
1635.02	Rock Pipe Inlet Sediment Trap Type-B	
1630.04	Stilling Basin	
1630.06	Special Stilling Basin	
	Rock Inlet Sediment Trap:	
1632.01	Type A	
1632.02	Type B	
1632.03	Type C	
	Skimmer Basin	
	Tiered Skimmer Basin	
	Infiltration Basin	

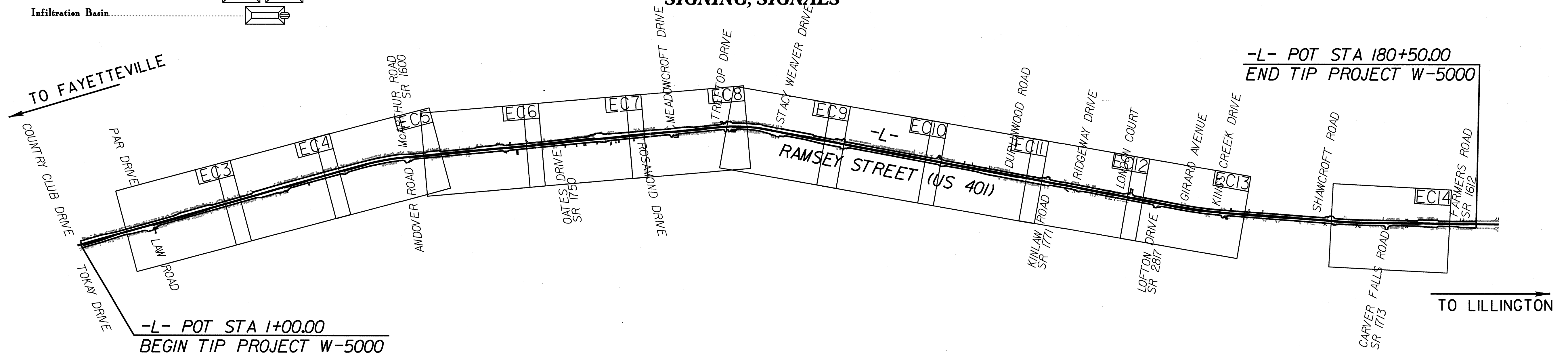
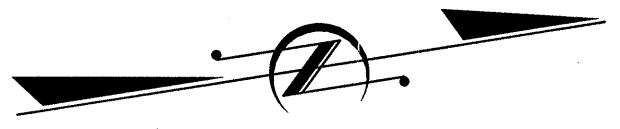
STATE OF NORTH CAROLINA
 DIVISION OF HIGHWAYS
 PLAN FOR PROPOSED
 HIGHWAY EROSION CONTROL
 CUMBERLAND COUNTY

LOCATION: RAMSEY STREET (US 401) FROM LAW ROAD
 TO NORTH OF FARMERS ROAD IN FAYETTEVILLE

TYPE OF WORK: WIDENING, GRADING, PAVING, DRAINAGE,
 SIGNING, SIGNALS

STATE	STATE PROJECT REFERENCE NO.	SHEET NO.	TOTAL SHEETS
N.C.	W-5000	EC-1	16
STATE PROJ. NO.	F.A. PROJ. NO.	DESCRIPTION	

THIS PROJECT CONTAINS
 EROSION CONTROL PLANS
 FOR CLEARING AND
 GRUBBING PHASE OF
 CONSTRUCTION.



TIP PROJECT: W-5000

PROJECT: 40995.1.1

GRAPHIC SCALE

25 0 50

PLANS

ROADSIDE ENVIRONMENTAL UNIT
 DIVISION OF HIGHWAYS
 STATE OF NORTH CAROLINA

HYDRAULICS ENGINEER

SEAL NOT VALID UNLESS SIGNED AND DATED

SIGNATURE: P.E.

ARCADIS
6 & 7 of North Carolina, Inc.
 801 Corporate Center Drive, Suite 300
 Raleigh, NC 27607-5073
 Tel 919/854-4282 Fax 919/854-5448

Reviewed and Approved by the Office of:
ROADSIDE ENVIRONMENTAL UNIT
 1 South Wilmington St.
 Raleigh, NC 27611

2006 STANDARD SPECIFICATIONS

Roadway Standard Drawings

The following roadway english standards as appear in "Roadway Standard Drawings"- Roadway Design Unit - N. C. Department of Transportation - Raleigh, N. C., dated July 18, 2006 and the latest revision thereto are applicable to this project and by reference hereby are considered a part of these plans.

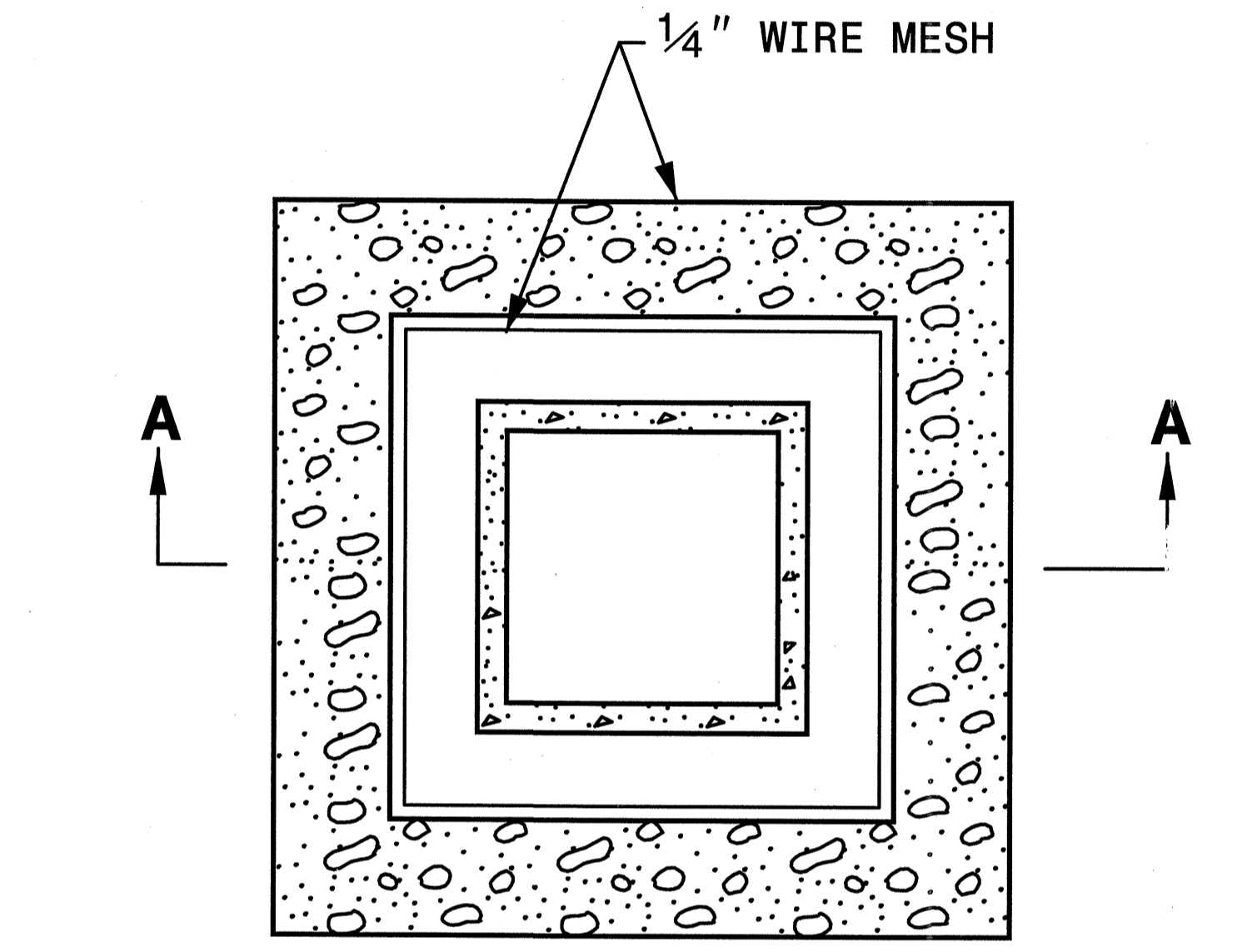
1604.01 Railroad Erosion Control Detail	1630.06 Special Stilling Basin
1605.01 Temporary Silt Fence	1632.01 Rock Inlet Sediment Trap Type A
1606.01 Special Sediment Control Fence	1632.02 Rock Inlet Sediment Trap Type B
1607.01 Gravel Construction Entrance	1632.03 Rock Inlet Sediment Trap Type C
1622.01 Temporary Berms and Slope Drains	1633.01 Temporary Rock Silt Check Type A
1630.01 Riser Basin	1634.01 Temporary Rock Sediment Dam Type A
1630.03 Temporary Silt Ditch	1634.02 Temporary Rock Sediment Dam Type B
1630.04 Stilling Basin	1635.01 Rock Pipe Inlet Sediment Trap Type A
1630.05 Temporary Diversion	1635.02 Rock Pipe Inlet Sediment Trap Type B

C:\projects\40995\1\1\40995.1.1.ec1.dwg
 11/20/2010 11:36:27 AM
 User: jbeard

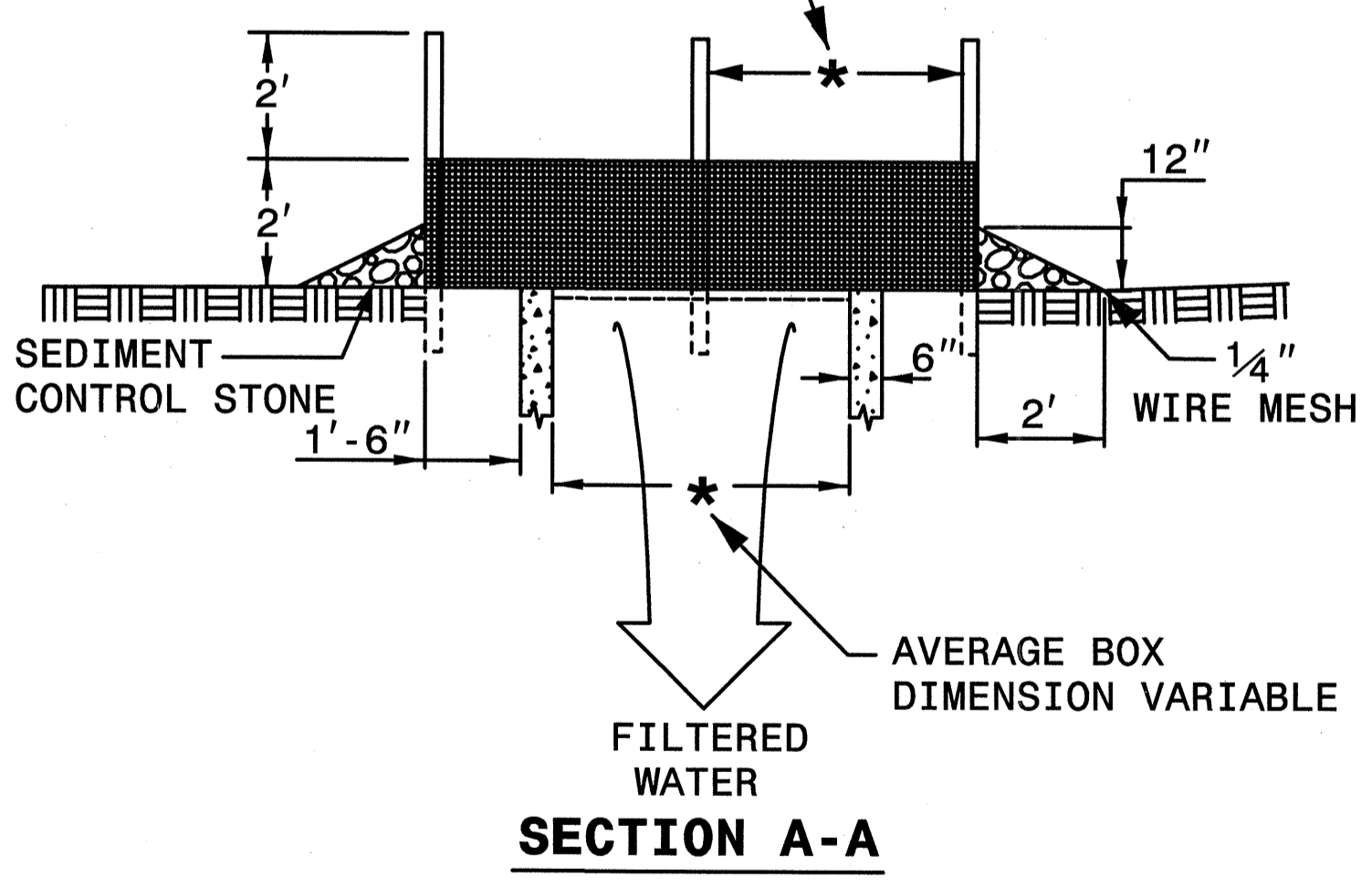
STATE OF NORTH CAROLINA
DEPT. OF TRANSPORTATION
DIVISION OF HIGHWAYS
RALEIGH, N.C.

ENGLISH STANDARD DRAWING FOR
ROCK INLET SEDIMENT TRAP TYPE 'C'

SHEET 1 OF 1
1632.03

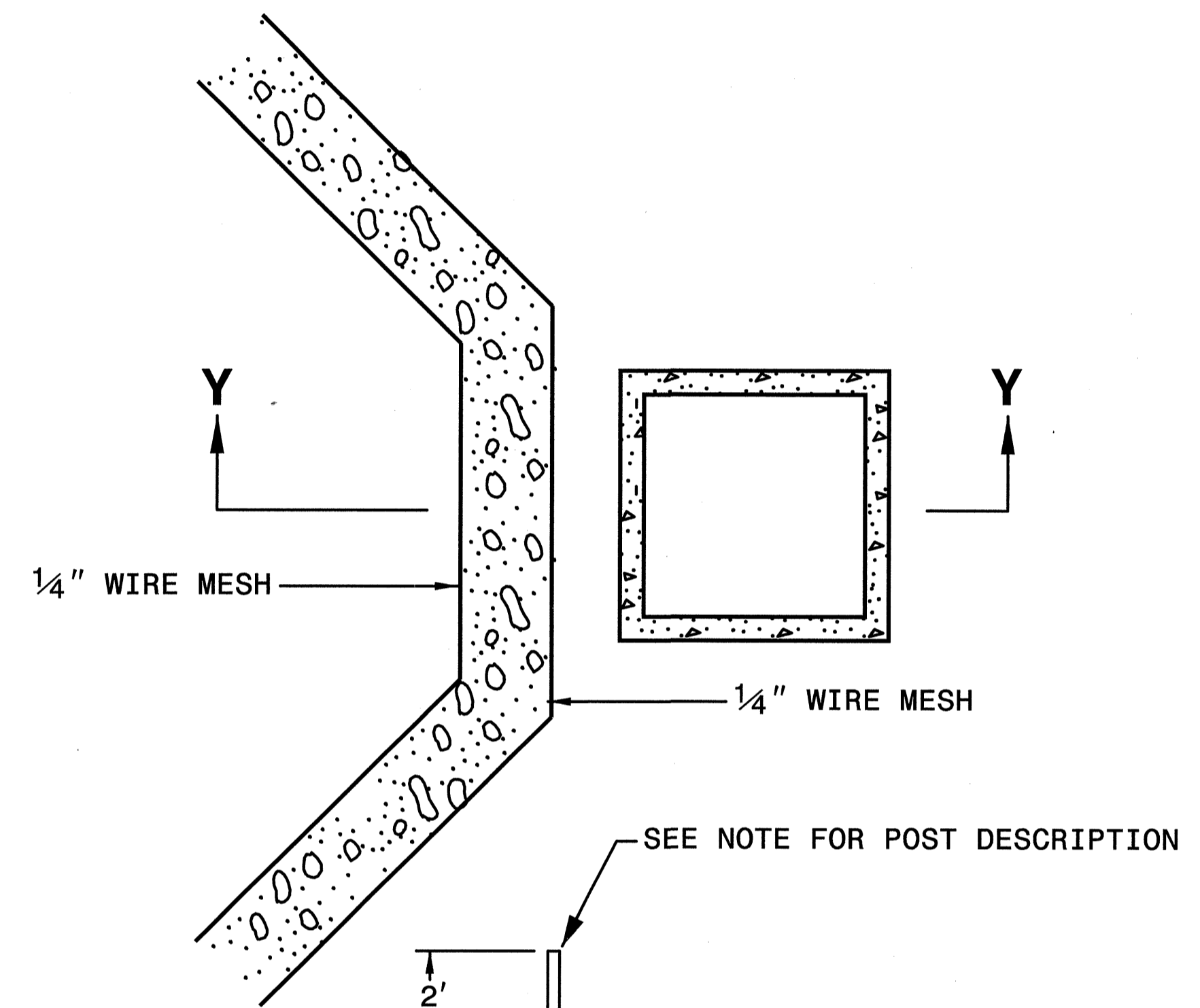


MAXIMUM POST SPACING 4 FT.

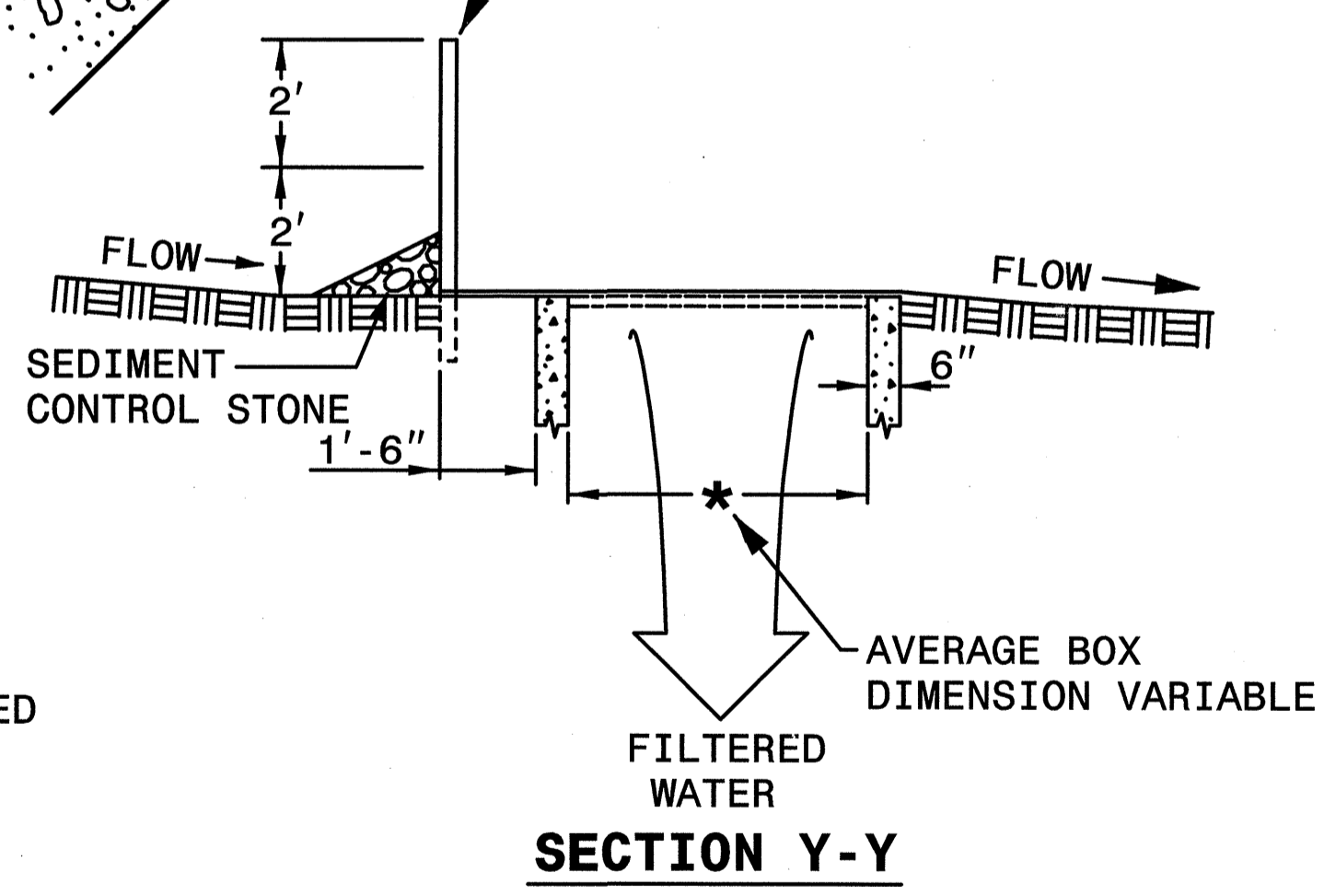


MULTI-DIRECTIONAL FLOW

NOTE
 USE NO. 5 OR NO. 57 STONE FOR SEDIMENT CONTROL STONE.
 USE 24 GAUGE MINIMUM WIRE MESH HARDWARE CLOTH WITH 1/4 INCH MESH OPENINGS.
 PLACE TOP OF WIRE MESH A MINIMUM OF ONE FOOT BELOW THE SHOULDER OR ANY DIVERSION POINT.
 INSTALL WIRE MESH UNDER SEDIMENT CONTROL STONE.
 USE 5' STEEL POST, INSTALLED 1.5' DEEP MINIMUM, AND OF THE SELF-FASTENER ANGLE STEEL TYPE.
 SPACE POST A MAXIMUM OF 4'.



SEE NOTE FOR POST DESCRIPTION



SINGLE-DIRECTIONAL FLOW

STATE OF NORTH CAROLINA
DEPT. OF TRANSPORTATION
DIVISION OF HIGHWAYS
RALEIGH, N.C.

ENGLISH STANDARD DRAWING FOR
ROCK INLET SEDIMENT TRAP TYPE 'C'

SHEET 1 OF 1
1632.03

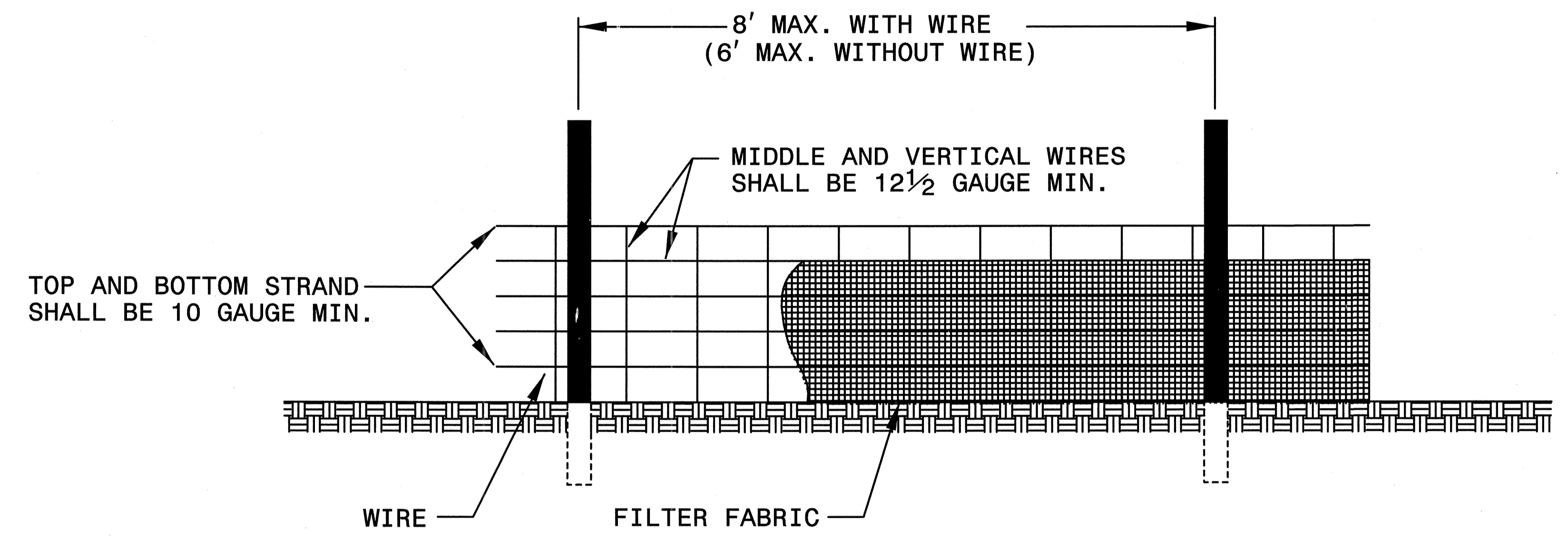
SYTIME\$DGN\$CH\$EN\$

HYDRAULICS
ENGINEER
 JUSTIN R. BEARD
 025954
 3-10-10
 SEAL NOT VALID UNLESS SIGNED AND DATED

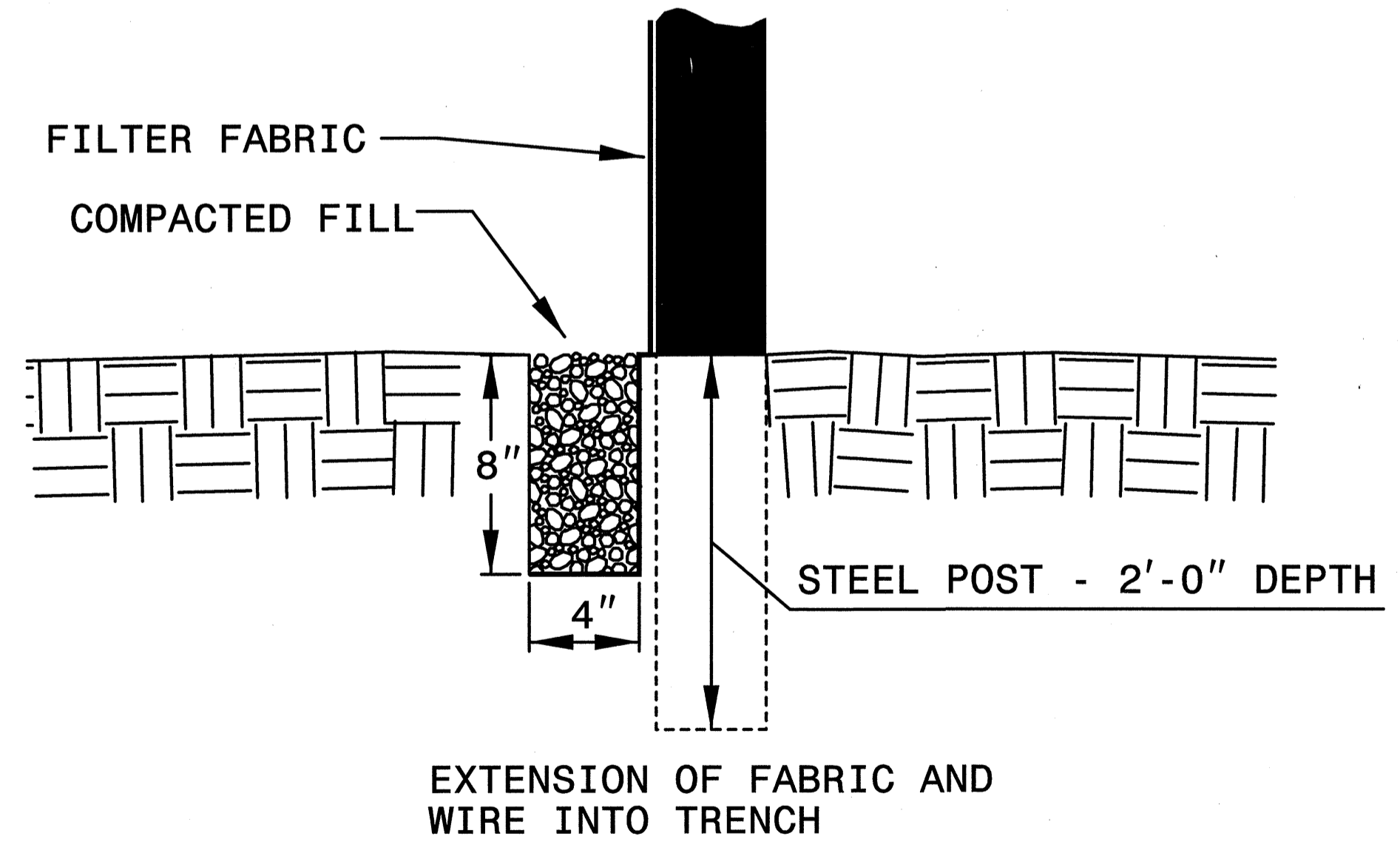
STATE OF
NORTH CAROLINA
DEPT. OF TRANSPORTATION
DIVISION OF HIGHWAYS
RALEIGH, N.C.

ENGLISH STANDARD DRAWING FOR
TEMPORARY SILT FENCE

SHEET 1 OF 1
1605.01



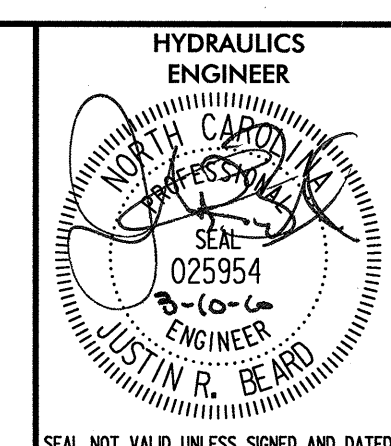
NOTES
 USE WIRE A MINIMUM OF 32" IN WIDTH AND WITH A MINIMUM OF 6 LINE WIRES WITH 12" STAY SPACING.
 USE FILTER FABRIC A MINIMUM OF 36" IN WIDTH AND FASTEN ADEQUATELY TO THE WIRE AS DIRECTED BY THE ENGINEER.
 PROVIDE 5'-0" STEEL POST OF THE SELF-FASTENER ANGLE STEEL TYPE.



STATE OF
NORTH CAROLINA
DEPT. OF TRANSPORTATION
DIVISION OF HIGHWAYS
RALEIGH, N.C.

ENGLISH STANDARD DRAWING FOR
TEMPORARY SILT FENCE

SHEET 1 OF 1
1605.01

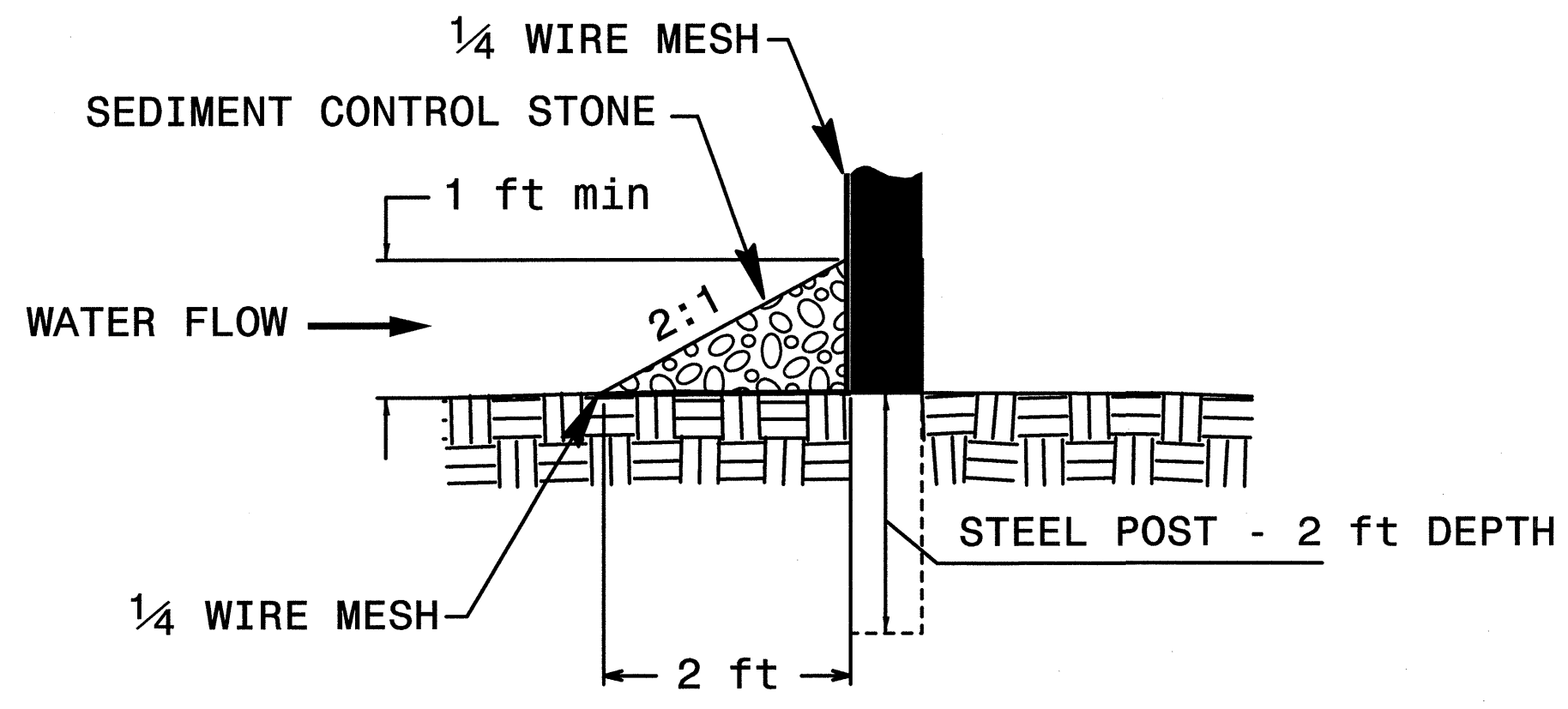
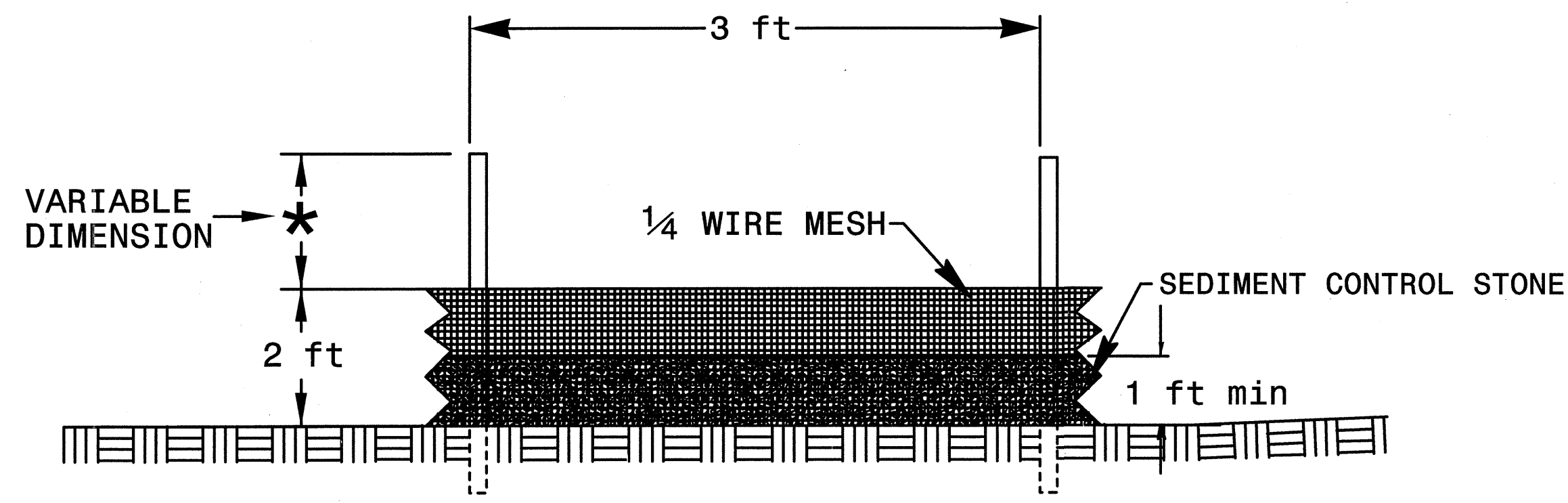


STATE OF
 NORTH CAROLINA
 DEPT. OF TRANSPORTATION
 DIVISION OF HIGHWAYS
 RALEIGH, N.C.

ENGLISH STANDARD DRAWING FOR
SPECIAL SEDIMENT CONTROL FENCE

SHEET 1 OF 1
1606.01

GENERAL NOTES:
 USE NO. 5 OR NO. 57 STONE FOR SEDIMENT CONTROL STONE.
 USE HARDWARE CLOTH 24 GAUGE WIRE MESH WITH 1/4 INCH MESH OPENINGS.
 INSTALL 5 FT. SELF FASTENER ANGLE STEEL POST 2 FT. DEEP MINIMUM.
 SPACE POST A MAXIMUM OF 3 FT.



STATE OF
 NORTH CAROLINA
 DEPT. OF TRANSPORTATION
 DIVISION OF HIGHWAYS
 RALEIGH, N.C.

ENGLISH STANDARD DRAWING FOR
SPECIAL SEDIMENT CONTROL FENCE

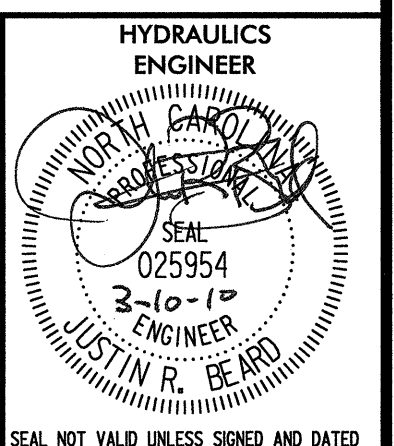
SHEET 1 OF 1
1606.01

RIGHT OF WAY REVISION: ADDED CONSTRUCTION EASEMENT ON PARCEL 1. STS 10302009

5/14/09

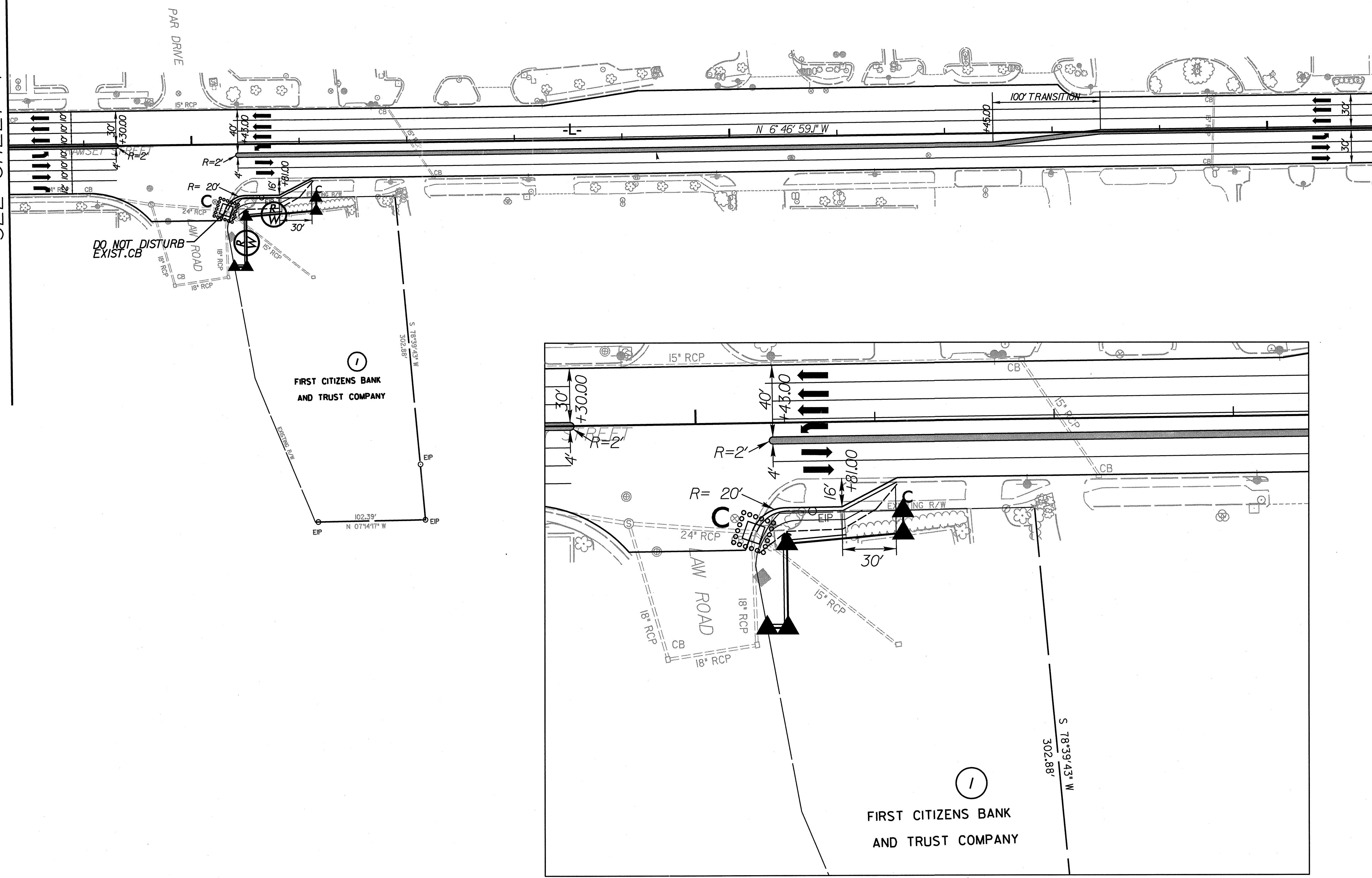


PROJECT REFERENCE NO. W-5000 SHEET NO. EC3/CONST.4A



MATCHLINE STA 8+30
SEE SHEET 4

MATCHLINE STA 21+00
SEE SHEET 5



INTERSECTION DETAIL @ LAW ROAD
SCALE: 1\"/>

*****SYSTEMTIME*****
*****USER*****

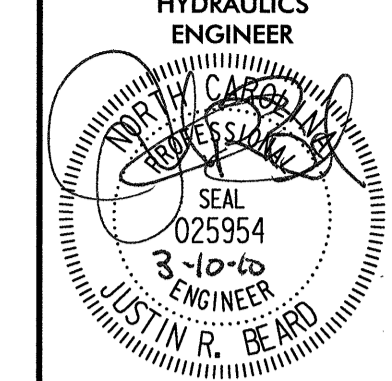
\\\\01\w0000\p00\p00.ec3\044.dgn 3/9/2010 11:30:35 AM

5/14/99

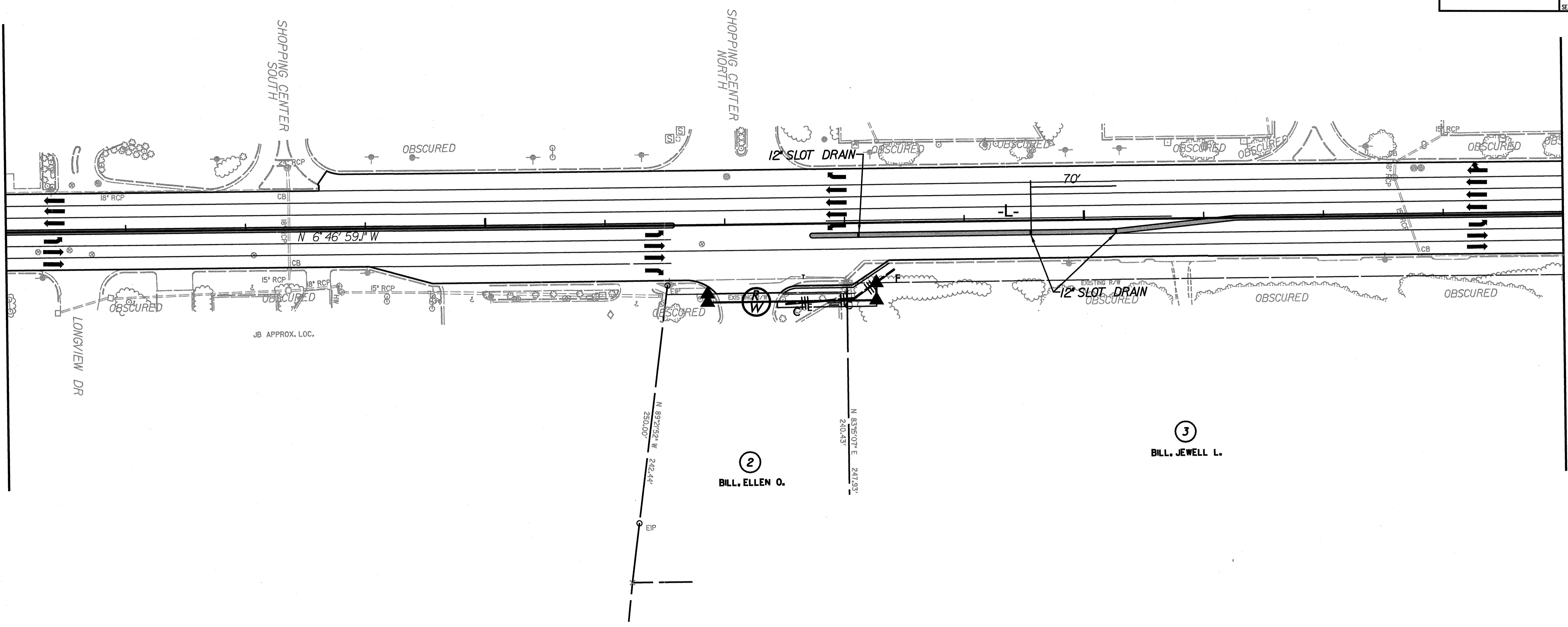
25

30

ARCADIS
 G & M of North Carolina, Inc.
 WWW.ARCADIS-US.COM
 80 Corporate Center Drive, Suite 300
 Raleigh, NC 27607-5073
 Tel: 919/854-2282 Fax: 919/854-5448

PROJECT REFERENCE NO. W-5000	SHEET NO. EC4/CONST.5
HYDRAULICS ENGINEER	
	
SEAL NOT VALID UNLESS SIGNED AND DATED	

MATCHLINE STA 21+00
SEE SHEET 4



MATCHLINE STA 34+00
SEE SHEET 6

2
BILL, ELLEN O.

3
BILL, JEWELL L.

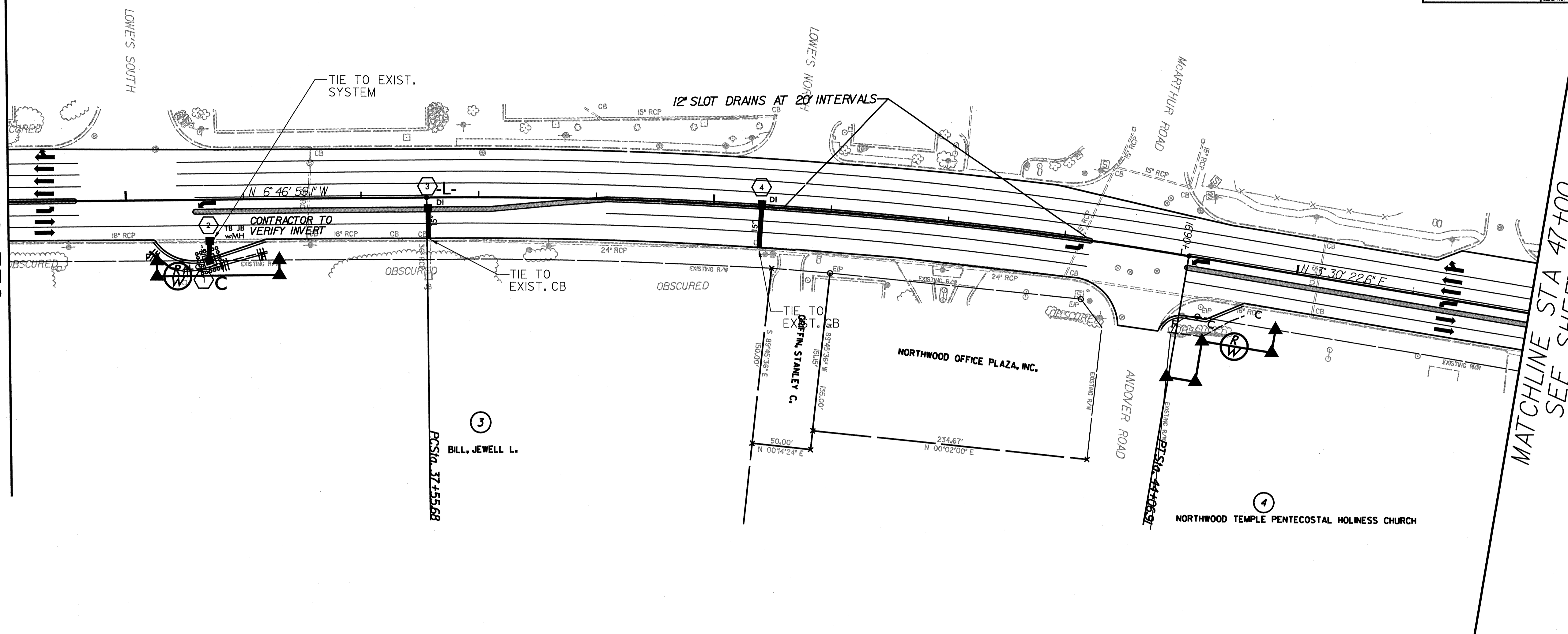
SEE SHEET 18A FOR PROFILE

SECTION CONDITION

3/2/2010 11:30:38 AM

-L-
 PI Sta 40+82.19
 $\Delta = 10^\circ 21' 52.9" (RT)$
 D = 135' 29.6"
 L = 651.23'
 T = 326.5r
 R = 3600.00'

MATCHLINE STA 34+00
SEE SHEET 5

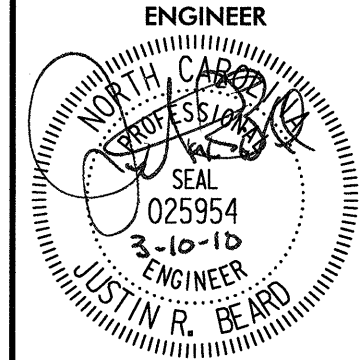


MATCHLINE STA 47+00
SEE SHEET 7

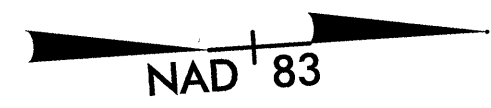
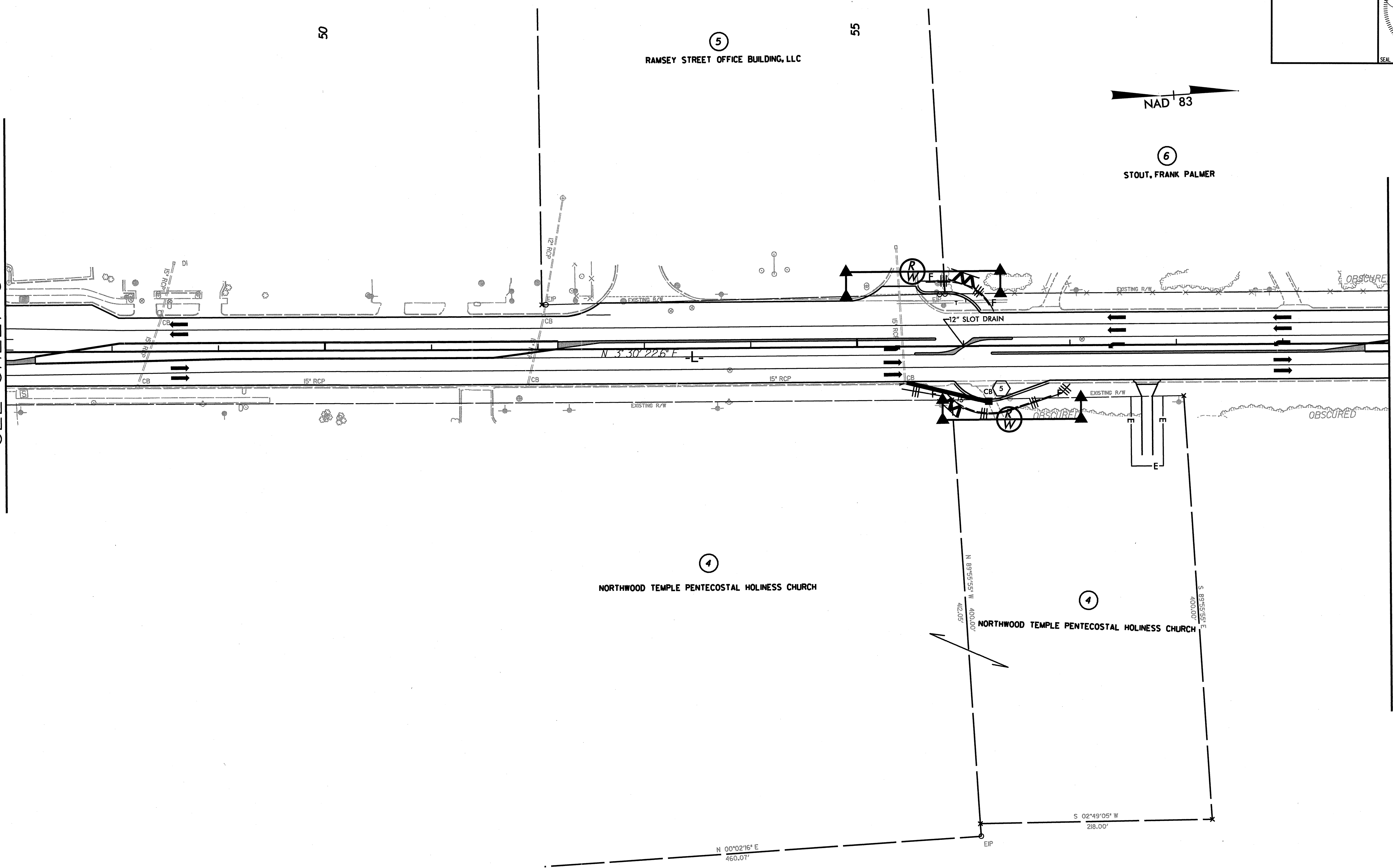
SEE SHEETS 18A & 19 FOR PROFILE

5/14/99

ARCADIS
 a subsidiary of North Carolina, Inc.
 WWW.ARCADIS-US.COM
 80 Corporate Center Drive, Suite 300
 Raleigh, NC 27607-5073
 Tel: 919/854-1282 Fax: 919/854-5448

PROJECT REFERENCE NO. W-5000	SHEET NO. EC6/CONST.7
HYDRAULICS ENGINEER	
 JUSTIN R. BEARD ENGINEER SEAL NOT VALID UNLESS SIGNED AND DATED	

MATCHLINE STA 47+00
SEE SHEET 6



MATCHLINE STA 60+00
SEE SHEET 8

SEE SHEET 19 FOR PROFILE

SYSTEMS DESIGN CONSULTANTS
10000 W. HICKORY HILL
Raleigh, NC 27617
919-854-1282

\\p01\m0001_rdv_esh\ESD 07.dwg 3/9/2010 11:36:43 AM

5/14/99

MATCHLINE STA 60+00
SEE SHEET 7

60

54.2
M. APP. 05

65

NORTHWOOD 7B, LLC

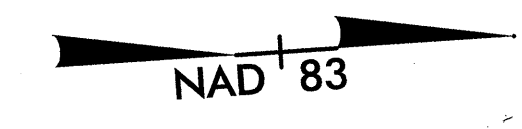
271/297
S. 83°31'33"E

MURPHY OIL USA, INC.

8

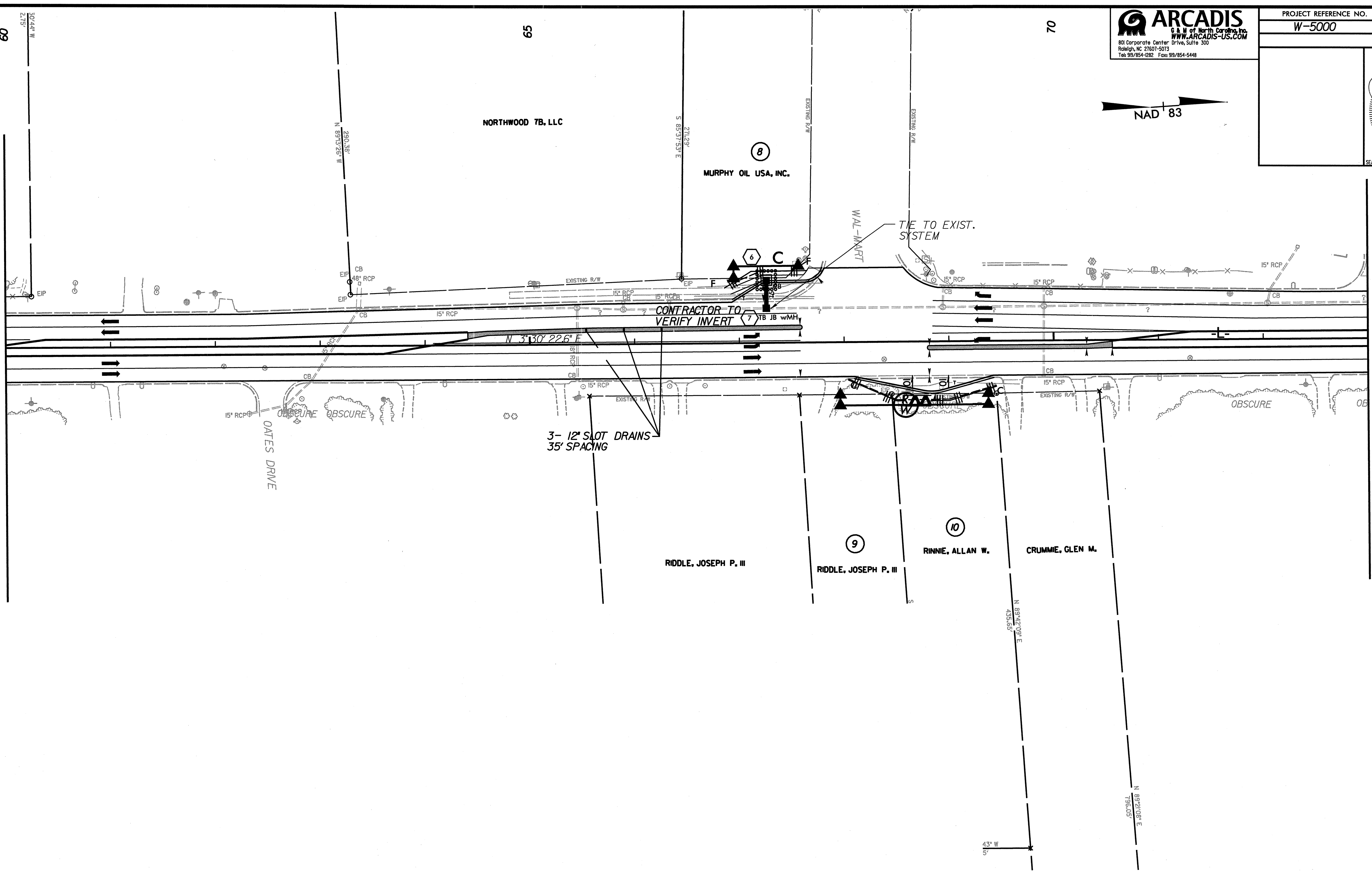
70

ARCADIS
 G & M of North Carolina, Inc.
 WWW.ARCADIS-US.COM
 80 Corporate Center Drive, Suite 300
 Raleigh, NC 27601-5073
 Tel: 919/854-2282 Fax: 919/854-5448



PROJECT REFERENCE NO. W-5000	SHEET NO. ECT/CONST.B
HYDRAULICS ENGINEER	
SEAL NOT VALID UNLESS SIGNED AND DATED	

MATCHLINE STA 73+00
SEE SHEET 9



3- 12" SLOT DRAINS
35' SPACING

RIDDLE, JOSEPH P. III

RIDDLE, JOSEPH P. III

RINNE, ALLAN W.

CRUMME, GLEN M.

N 89°42'09" E
435.183

N 89°30'00" E
503.250

43' W

SYSTEMS DOWN

SEE SHEETS 19 & 20 FOR PROFILE

3/19/2010 11:30:46 AM

5/14/99

ARCADIS
 G & M of North Carolina, Inc.
 801 Corporate Center Drive, Suite 300
 Raleigh, NC 27607-5973
 Tel: 919/854-4326 Fax: 919/854-5448
 WWW.ARCADIS-US.COM

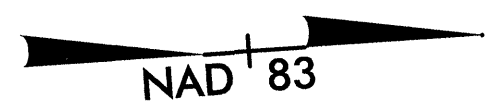
PROJECT REFERENCE NO. W-5000	SHEET NO. EC8/CONST.9
---------------------------------	--------------------------

HYDRAULICS
ENGINEER

SEAL

025954
3-10-10
ENGINEER
JUSTIN R. BEARD

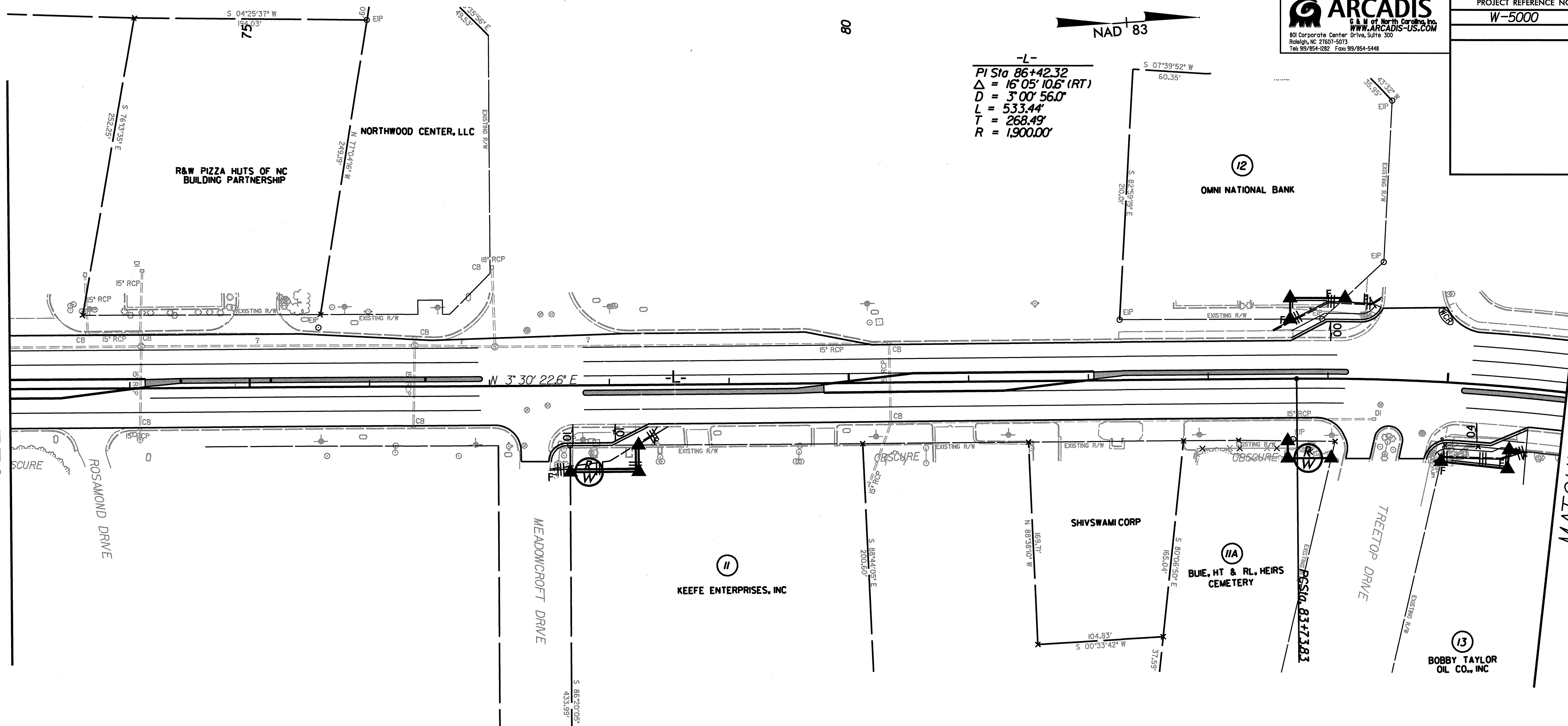
SEAL NOT VALID UNLESS SIGNED AND DATED



-L-
 PI Sta 86+42.32
 $\Delta = 16^{\circ}05'10.6''$ (RT)
 D = 3'00" 56.0"
 L = 533.44'
 T = 268.49'
 R = 1,900.00'

MATCHLINE STA 73+00
SEE SHEET 8

MATCHLINE STA 86+00
SEE SHEET 10

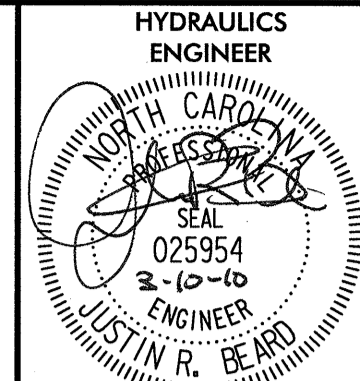


SYSTEMS
 01/11/2010 11:30:45 AM

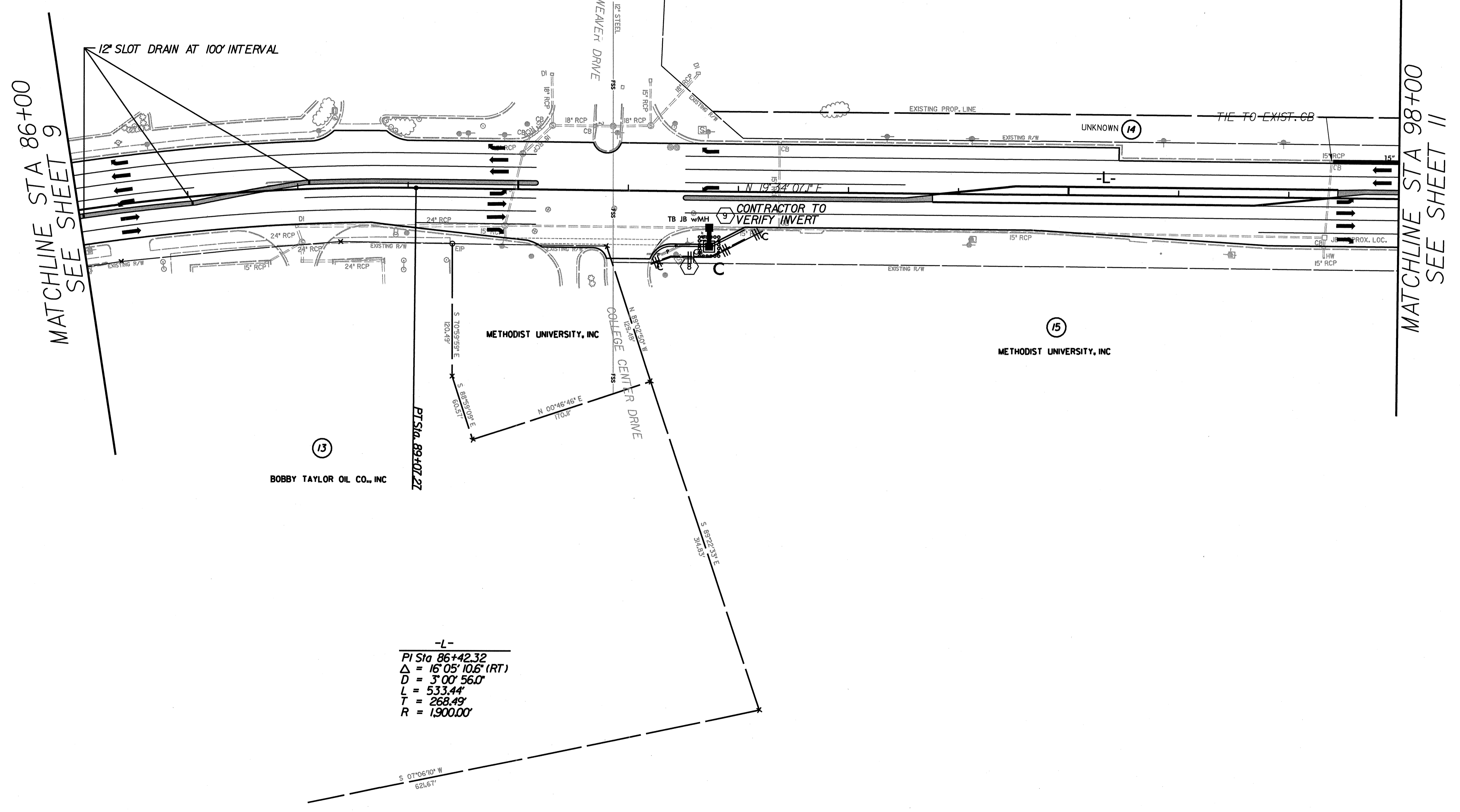
SEE SHEET 20 FOR PROFILE

5/14/99

ARCADIS
 G & M of North Carolina, Inc.
 WWW.ARCADIS-US.COM
 80 Corporate Center
 Raleigh, NC 27607-5073
 Tel 919/854-0292 Fax 919/854-5446

PROJECT REFERENCE NO.	SHEET NO.
W-5000	EC9/CONST JO
HYDRAULICS ENGINEER	
	
SEAL NOT VALID UNLESS SIGNED AND DATED	

PAUL THOMPSON DEVELOPMENT CORP.



SEE SHEET 20 & 21 FOR PROFILE

Vertical text on the left margin: 5/14/99, C:\PROJECTS\EC9\DWG\EC9-CONST-JO.DWG, 3/9/2010 11:30:51 AM

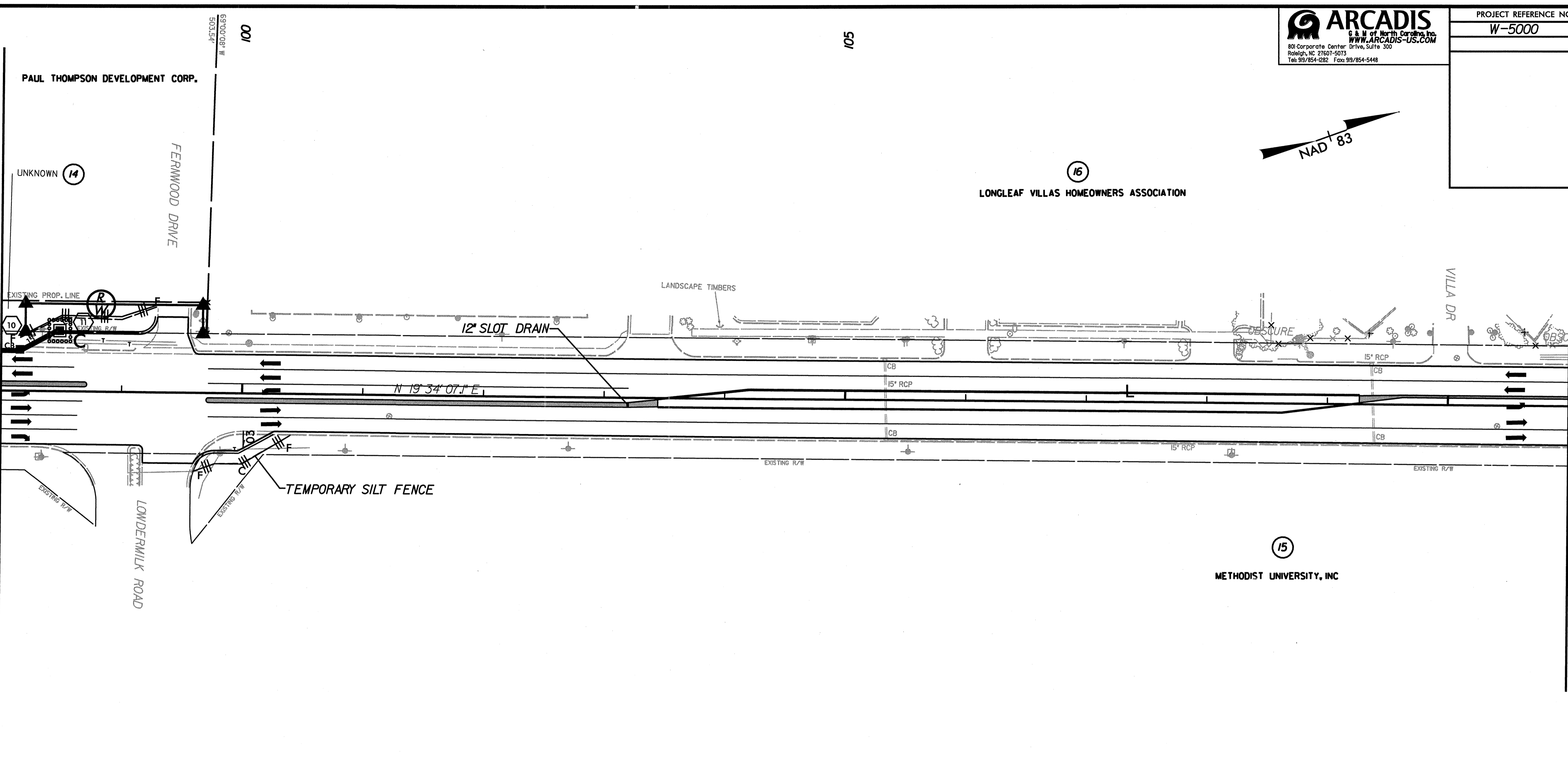
Vertical text on the right margin: 3/9/2010 11:30:51 AM

5/14/95

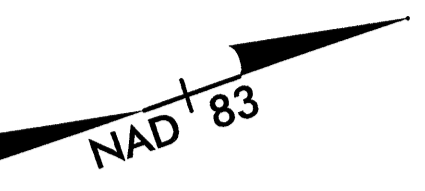
ARCADIS
 a U.S. company
 80 Corporate Center Drive, Suite 300
 Raleigh, NC 27607-5073
 Tel: 919/854-4392 Fax: 919/854-5448
 WWW.ARCADIS-US.COM

PROJECT REFERENCE NO. W-5000	SHEET NO. EC10/CONST II
HYDRAULICS ENGINEER	
SEAL NOT VALID UNLESS SIGNED AND DATED	

MATCHLINE STA 98+00
SEE SHEET 10



MATCHLINE STA 111+00
SEE SHEET 12



PAUL THOMPSON DEVELOPMENT CORP.

UNKNOWN 14

FERMWOOD DRIVE

100

105

16
LONGLEAF VILLAS HOMEOWNERS ASSOCIATION

15
METHODIST UNIVERSITY, INC

VILLA DR

EXISTING PROP. LINE

LANDSCAPE TIMBERS

12" SLOT DRAIN

N 19° 34' 07.1" E

TEMPORARY SILT FENCE

LOWDERMILK ROAD

EXISTING R/W

EXISTING R/W

EXISTING R/W

SEE SHEET 21 FOR PROFILE

DATE: 5/14/95
DRAWN BY: JCN
CHECKED BY: JCN
SCALE: AS SHOWN
PROJECT: W-5000
SHEET: EC10/CONST II

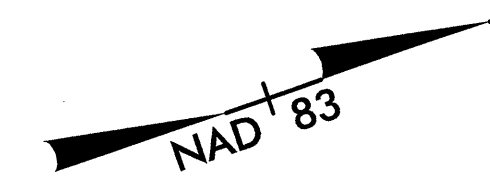
ARCADIS W-5000 REV 081 EC10 II 3/9/2010 11:30:54 AM

5/14/99

ARCADIS
G & N of North Carolina, Inc.
WWW.ARCADIS-US.COM
801 Corporate Center Drive, Suite 300
Raleigh, NC 27607-5073
Tel: 919/854-2282 Fax: 919/854-5448

PROJECT REFERENCE NO. W-5000	SHEET NO. EC11/CONST J2
---------------------------------	----------------------------

HYDRAULICS
ENGINEER
NORTH CAROLINA
SEAL
025954
3-10-10
ENGINEER
JUSTIN R. BEARD
SEAL NOT VALID UNLESS SIGNED AND DATED



MATCHLINE STA 111+00
SEE SHEET 11

MATCHLINE STA 124+00
SEE SHEET 13



SEE SHEETS 21 & 22 FOR PROFILE

SCHEMATIC
DATE: 5/14/99
DRAWN BY: JTB
CHECKED BY: JB
SCALE: AS SHOWN
PROJECT: W-5000

Profile: W-5000.rvt esb EC11 12.dwg 3/19/2010 11:30:57 AM

5/14/09

ARCADIS
 6 & 8 of North Carolina, Inc.
 WWW.ARCADIS-US.COM
 80 Corporate Center Drive, Suite 300
 Raleigh, NC 27607-5013
 Tel: 919/854-1282 Fax: 919/854-5448

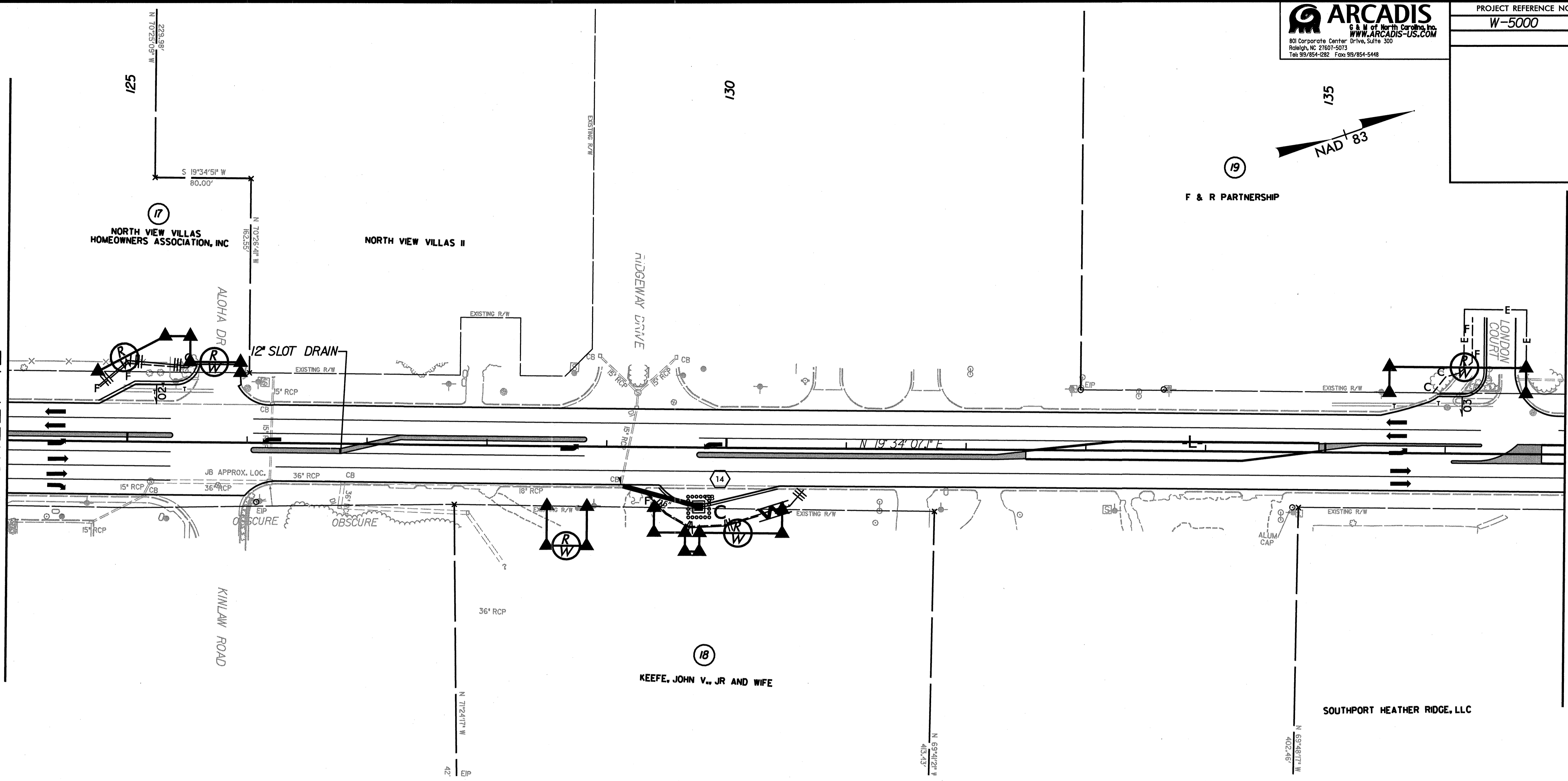
PROJECT REFERENCE NO.	SHEET NO.
W-5000	EC12/CONSTJ3

HYDRAULICS
ENGINEER

SEAL
025954
3-10-10
ENGINEER
JUSTIN R. BEARD

SEAL NOT VALID UNLESS SIGNED AND DATED

MATCHLINE STA 124+00
SEE SHEET 12



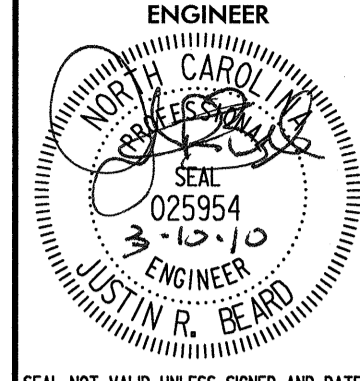
MATCHLINE STA 137+00
SEE SHEET 14

SEE SHEET 22 FOR PROFILE

DATE PLOTTED: 5/14/09 11:30:59 AM
 PLOTTER: HP DesignJet 1200
 PLOT SCALE: 1"=100'

DATE PLOTTED: 5/14/09 11:30:59 AM
 PLOTTER: HP DesignJet 1200
 PLOT SCALE: 1"=100'

5/14/09

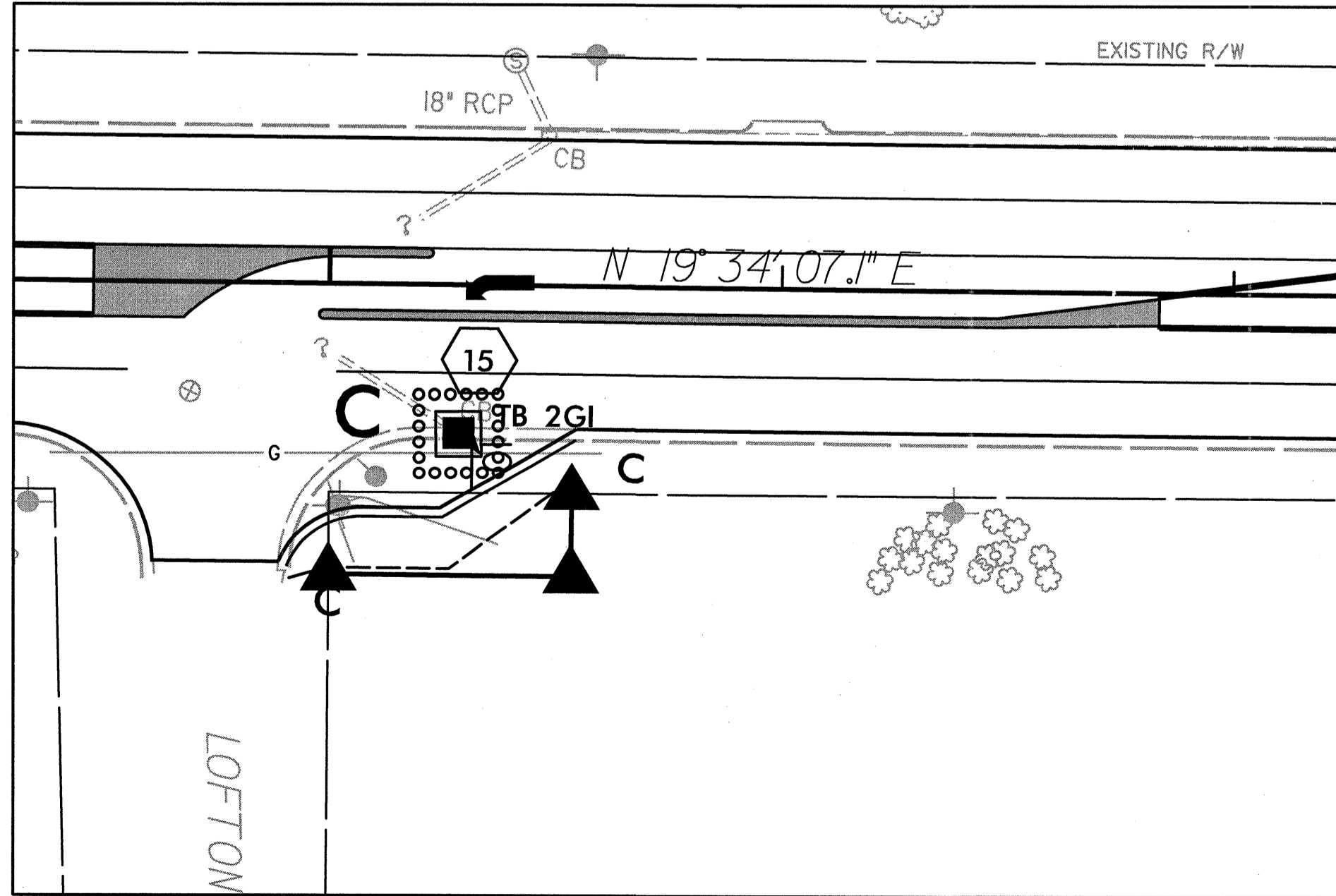
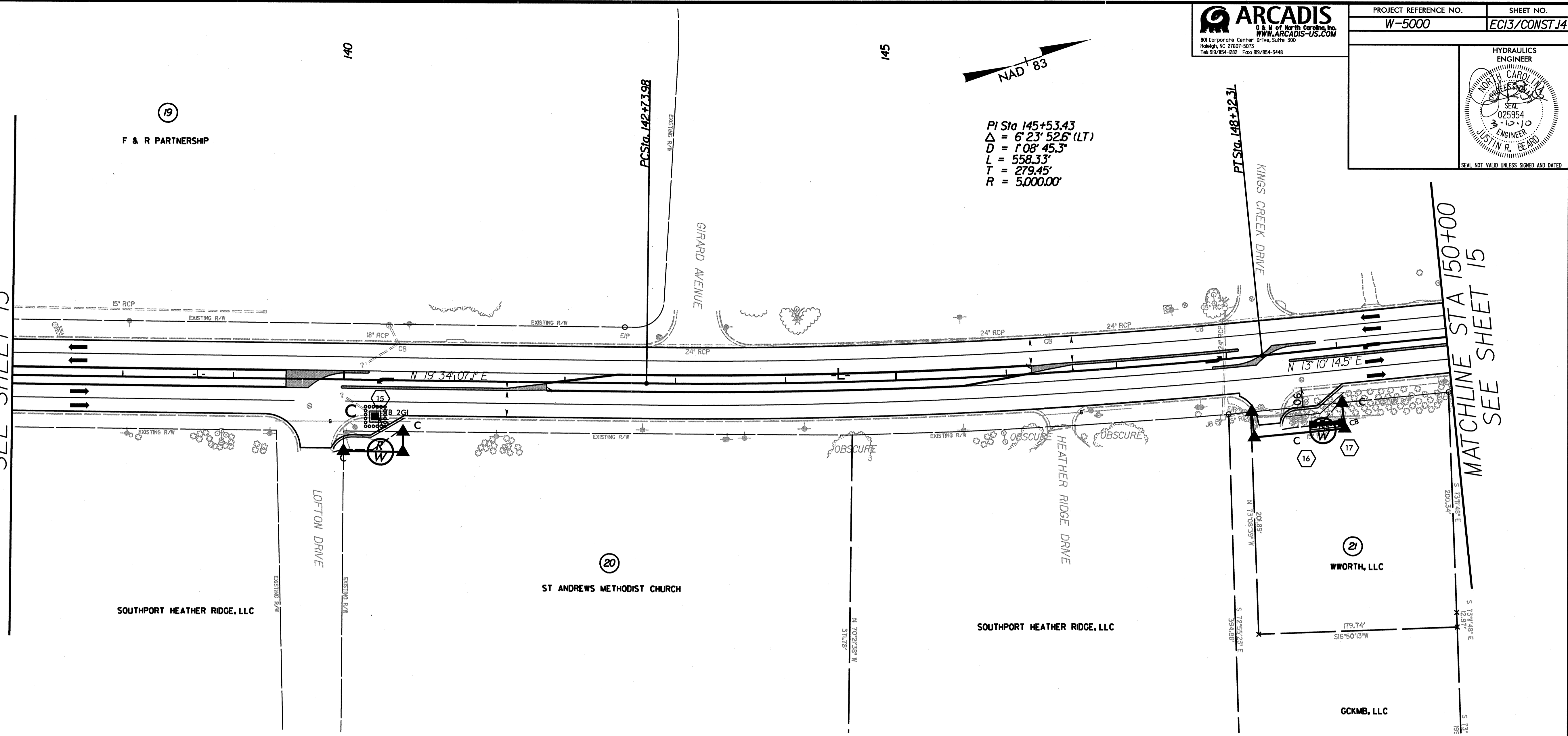
PROJECT REFERENCE NO. W-5000	SHEET NO. EC13/CONST 14
HYDRAULICS ENGINEER	
 JUSTIN R. BEARD ENGINEER SEAL NOT VALID UNLESS SIGNED AND DATED	



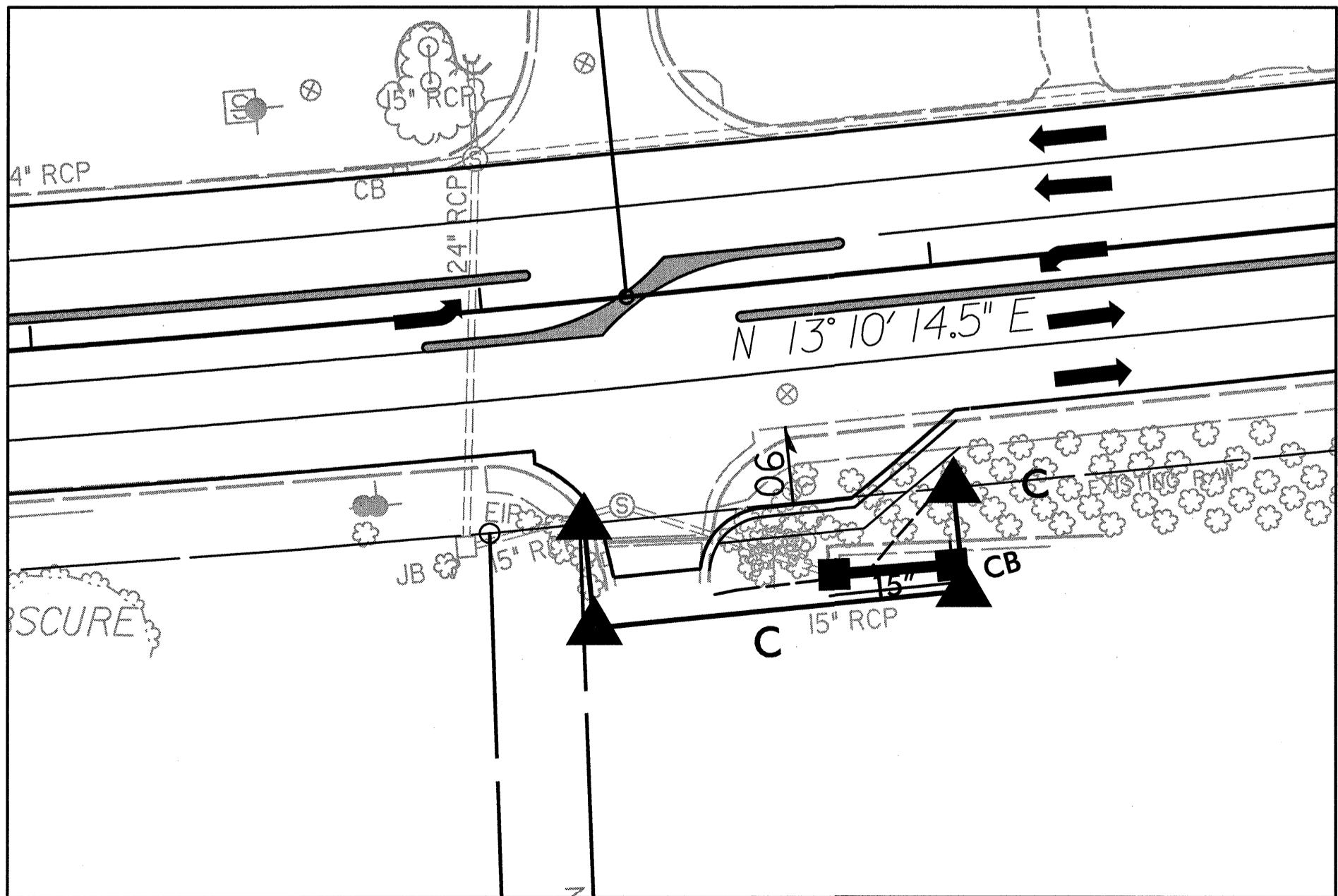
PI Sta 145+53.43
 $\Delta = 6' 23'' 52.6''$ (LT)
 $D = 1' 08'' 45.3''$
 $L = 558.33'$
 $T = 279.45'$
 $R = 5,000.00'$

MATCHLINE STA 137+00
SEE SHEET 13

MATCHLINE STA 150+00
SEE SHEET 15



INTERSECTION DETAIL @ LOFTON DRIVE
SCALE: 1"=30'



INTERSECTION DETAIL @ HEATHER RIDGE DRIVE
SCALE: 1"=30'

SEE SHEET 22 FOR PROFILE

SYSTEMS
 DESIGN
 CONSULTING
 ENGINEERING
 ARCHITECTURE
 INTERIORS
 LANDSCAPE ARCHITECTURE
 PLANNING
 SURVEYING
 ENVIRONMENTAL SCIENCE
 & TECHNOLOGY

PROJECT: W-5000 FOR ABB; EC13 14; JOB: 3/29/2010 11:31:02 AM

5/14/99

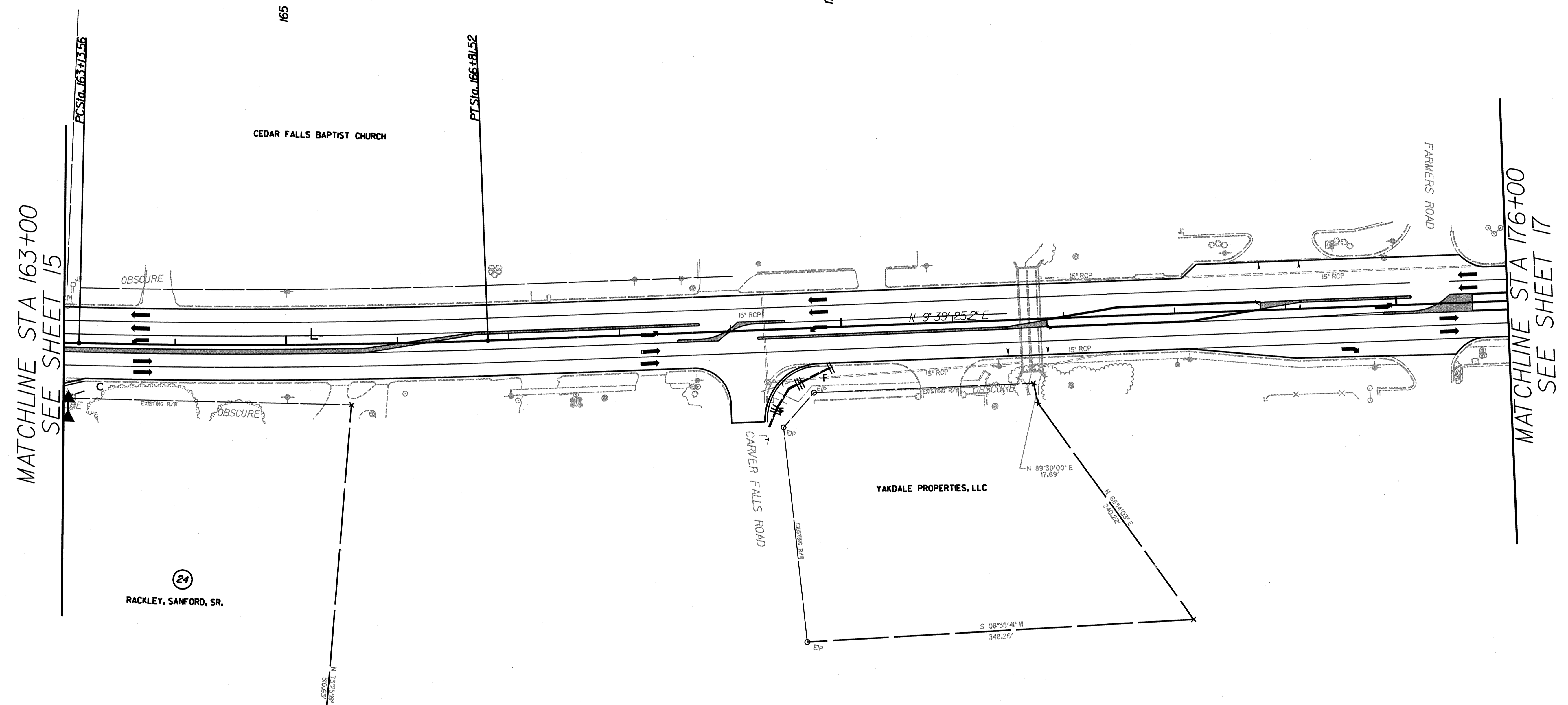
ARCADIS
G & M of North Carolina, Inc.
WWW.ARCADIS-US.COM
801 Corporate Center Drive, Suite 300
Raleigh, NC 27607-5073
Tel 919/854-1282 Fax 919/854-5448

PROJECT REFERENCE NO. **W-5000** SHEET NO. **EC14/CONST J6**

HYDRAULICS
ENGINEER
NORTH CAROLINA
REGISTERED
SEAL
025954
3-10-10
ENGINEER
JUSTIN R. BEARD
SEAL NOT VALID UNLESS SIGNED AND DATED.



175



MATCHLINE STA 163+00
SEE SHEET 15

MATCHLINE STA 176+00
SEE SHEET 17

PI Sta 164+97.60
Δ = 3°30'49.3" (LT)
D = 0°57'17.7"
L = 367.95'
T = 184.03'
R = 6,000.00'

SEE SHEET 23 FOR PROFILE

SYSTEMS
DONSON
USERNAM

PROJ: W5000; PLOT: USH; EC14; 16; 3/19/2010 11:31:05 AM