

09/08/09

TIP PROJECT: R-2408B

T.I.P. NO.	SHEET NO.
R-2408B	UO-1

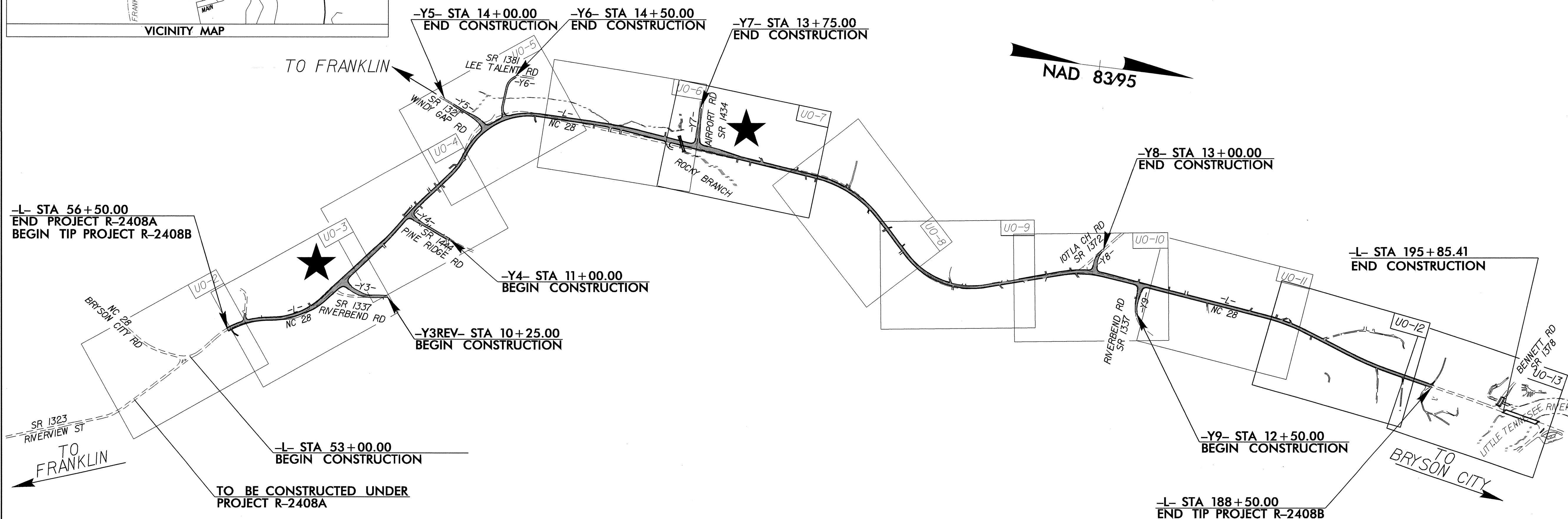
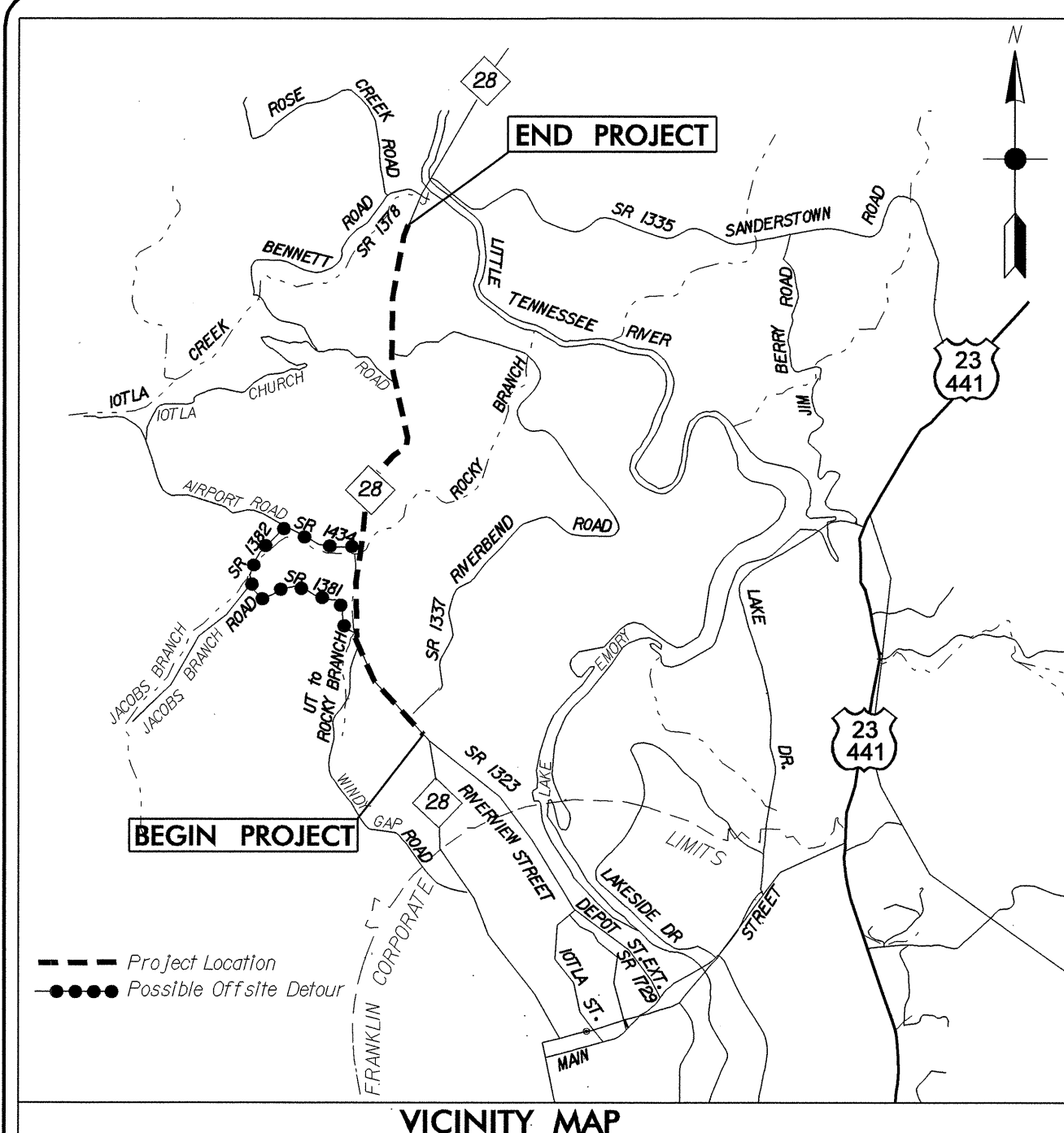


STATE OF NORTH CAROLINA
DIVISION OF HIGHWAYS

**UTILITIES BY OTHERS PLANS
MACON COUNTY**

**LOCATION: NC 28 FROM NORTH OF SR 1323
(RIVERVIEW ST.) TO SOUTH OF
SR 1378 (BENNETT RD.)**

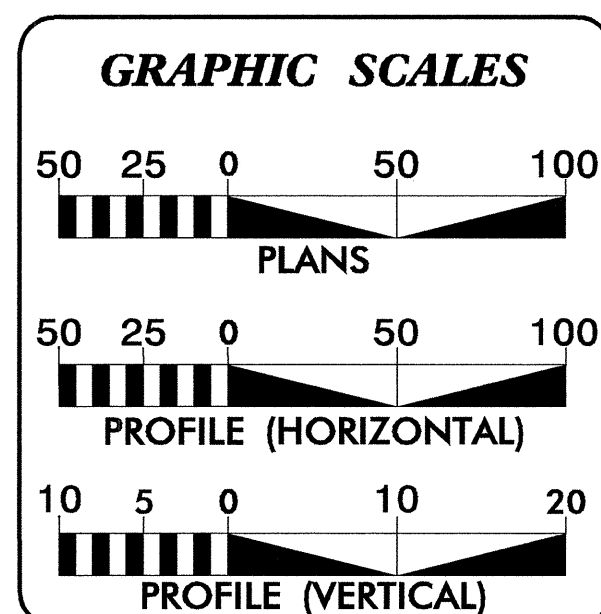
TYPE OF WORK: JOINT USE AERIAL UTILITIES



★ PROPOSED TRAFFIC SIGNAL
 ** DESIGN EXCEPTION NEEDED FOR STOPPING SIGHT DISTANCE, HORIZONTAL ALIGNMENT, VERTICAL ALIGNMENT, AND GRADE.

THIS PROJECT DOES NOT FALL WITHIN THE MUNICIPAL BOUNDARIES OF THE CITY OF FRANKLIN.

CLEARING ON THIS PROJECT SHALL BE PERFORMED TO THE LIMITS ESTABLISHED BY METHOD II



INDEX OF SHEETS	
SHEET NO.	DESCRIPTION
UO-1	TITLE SHEET
UO-2 THRU UO-21	UTILITIES BY OTHERS PLAN SHEETS

UTILITY OWNERS ON PROJECT	
(1) POWER (DISTRIBUTION) - DUKE ENERGY	
(2) POWER (TRANSMISSION) - DUKE ENERGY	
(3) TELEPHONE - VERIZON	
(4) CABLEVISION - MORRIS BROADBAND	

PREPARED IN THE OFFICE OF:
**DIVISION OF HIGHWAYS
 UTILITIES ENGINEERING
 SECTION**
 1591 MAIL SERVICES CENTER
 RALEIGH NC 27699-1591
 PHONE (919) 250-4128
 FAX (919) 250-4119

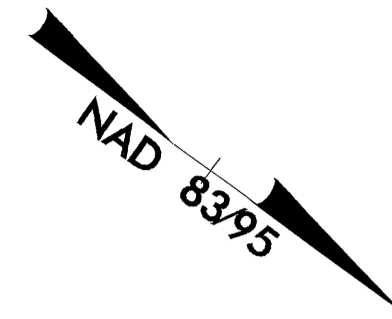
Roger Worthington, P.E. UTILITIES SECTION ENGINEER
Carl Barclay, P.E. UTILITIES SQUAD LEADER PROJECT ENGINEER
James E. Swinson UTILITIES PROJECT DESIGNER

08-FEB-2010 16:45
 C:\Utilities\proj\ut\proj\uo\plans\vr-2408b\ut_title_uo1.psh.dgn
 \$\$\$\$USERNAME\$\$\$\$

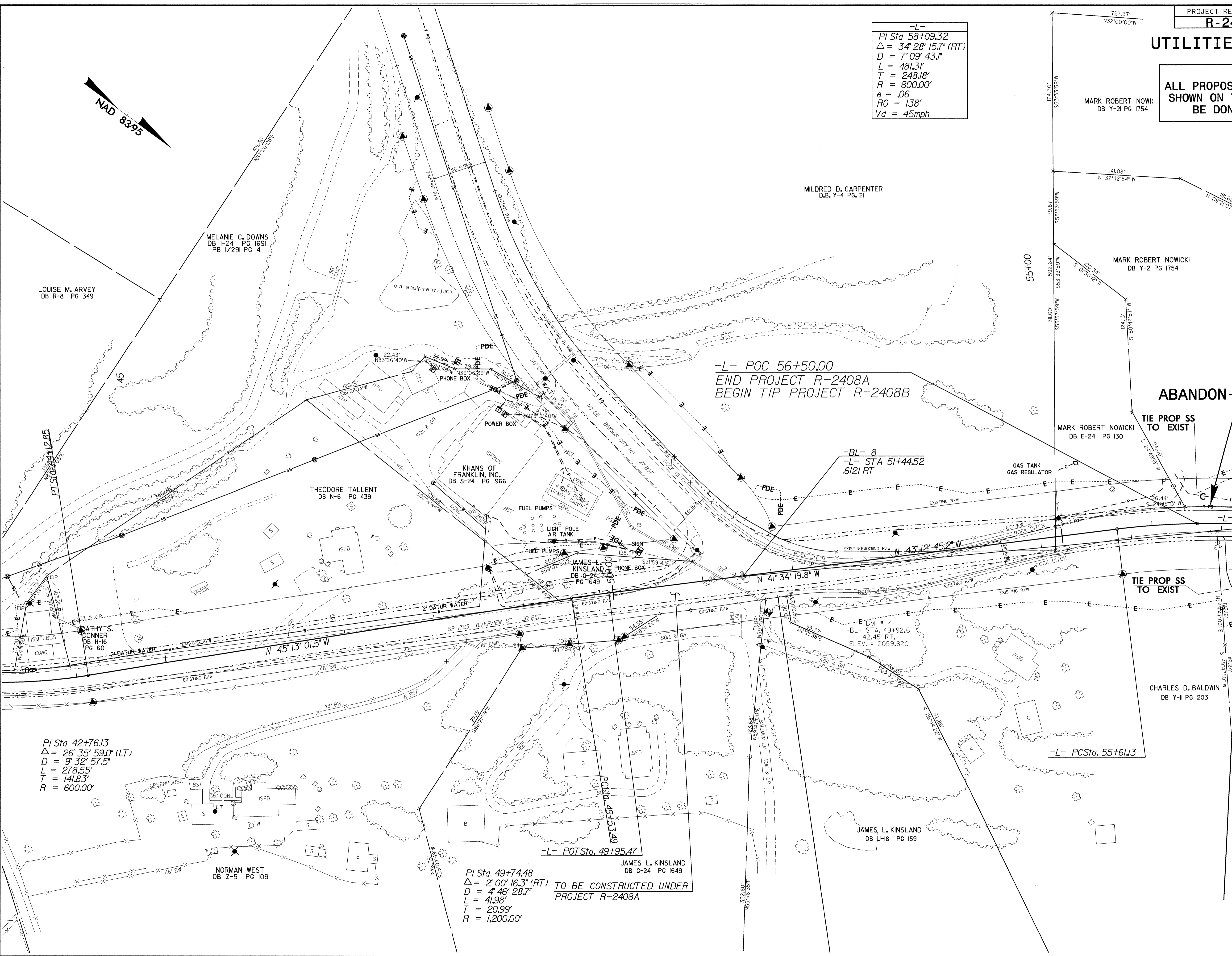
UTILITIES BY OTHERS

NOTE:
ALL PROPOSED UTILITY WORK
SHOWN ON THIS SHEET WILL
BE DONE BY OTHERS

-L-
PI Sta 58+09.32
 $\Delta = 34^{\circ} 28' 15.7''$ (RT)
 $D = 7^{\circ} 09' 43.1''$
 $L = 481.31'$
 $T = 248.18'$
 $R = 800.00'$
 $e = .06$
 $RO = 138'$
 $Vd = 45\text{mph}$



08-FEB-2010 16:02
C:\projects\2408b\ut.4\ut.4_uo2_psh.dgn
5/14/99



-L- POC 56+50.00
END PROJECT R-2408A
BEGIN TIP PROJECT R-2408B

-BL- 8
-L- STA 51+44.52
.6121 RT

PI Sta 42+76.13
 $\Delta = 26^{\circ} 35' 59.0''$ (LT)
 $D = 9^{\circ} 32' 57.5''$
 $L = 278.55'$
 $T = 141.83'$
 $R = 600.00'$

PI Sta 49+74.48
 $\Delta = 2^{\circ} 00' 16.3''$ (RT)
 $D = 4^{\circ} 46' 28.7''$
 $L = 41.98'$
 $T = 20.99'$
 $R = 1,200.00'$

TO BE CONSTRUCTED UNDER
PROJECT R-2408A

ABANDON

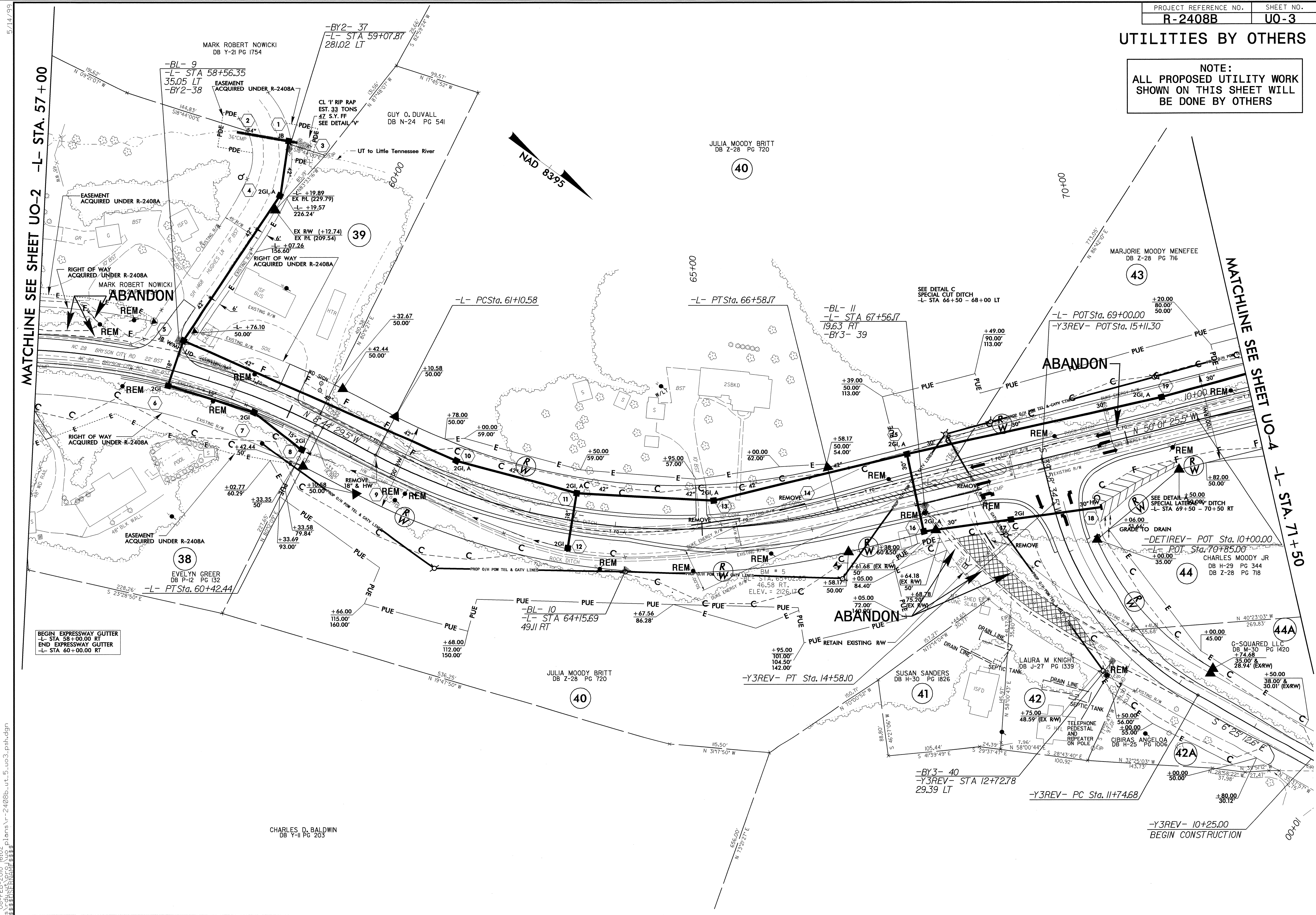
TIE PROP SS
TO EXIST

TIE PROP SS
TO EXIST

MATCHLINE SEE SHEET UO-3
-L- STA. 57+00

UTILITIES BY OTHERS

NOTE:
ALL PROPOSED UTILITY WORK
SHOWN ON THIS SHEET WILL
BE DONE BY OTHERS



MATCHLINE SEE SHEET UO-2 -L- STA. 57+00

MATCHLINE SEE SHEET UO-A -L- STA. 71+50

BEGIN EXPRESSWAY GUTTER
-L- STA 58+00.00 RT
END EXPRESSWAY GUTTER
-L- STA 60+00.00 RT

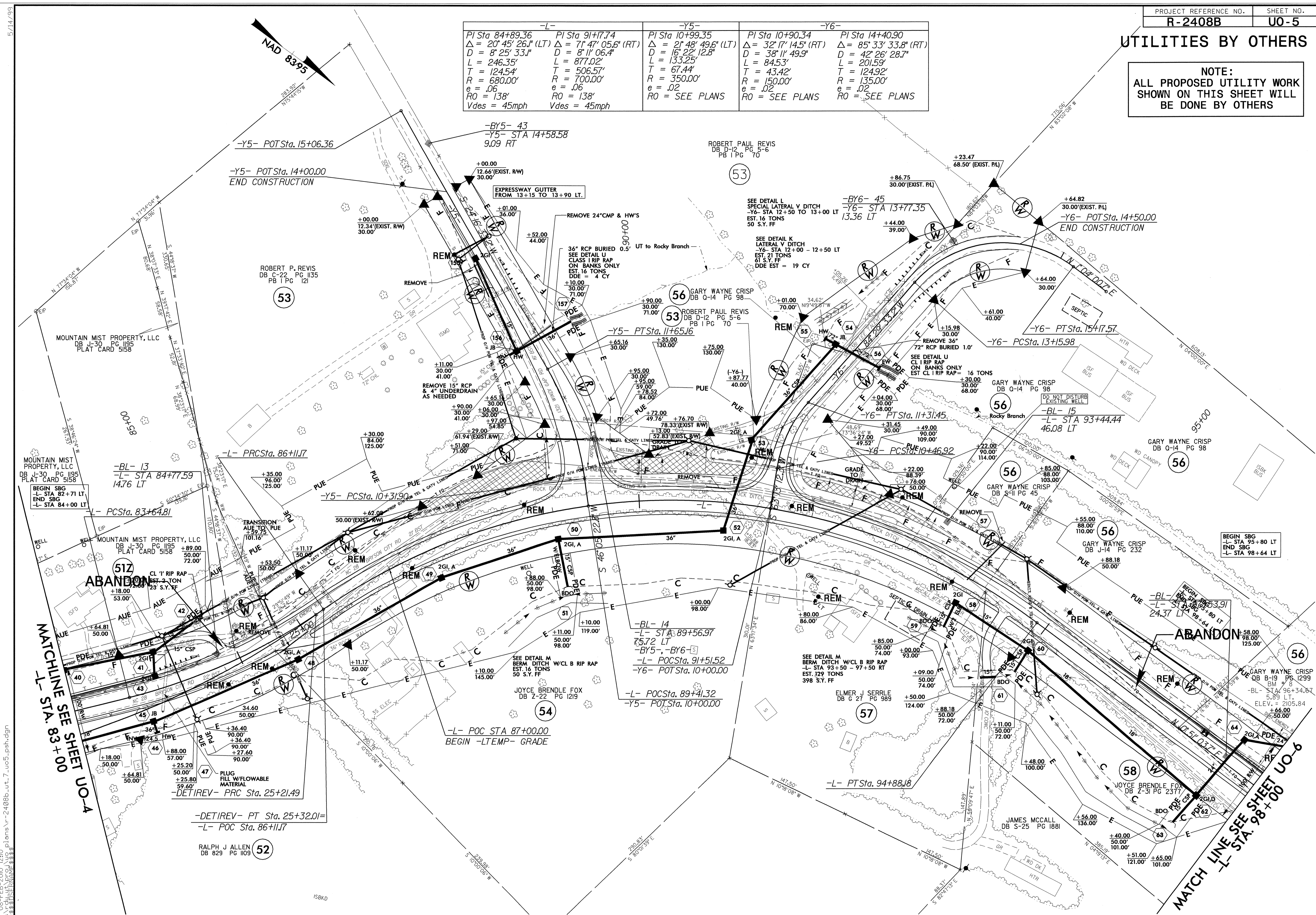
-Y3REV- 10+25.00
BEGIN CONSTRUCTION

08-FEB-2010 16:02
c:\projects\2408b\ut_5_uo3.psh.dgn
11:11

UTILITIES BY OTHERS

NOTE:
ALL PROPOSED UTILITY WORK
SHOWN ON THIS SHEET WILL
BE DONE BY OTHERS

-L-		-Y5-		-Y6-	
PI Sta 84+89.36	PI Sta 91+77.4	PI Sta 10+99.35	PI Sta 10+90.34	PI Sta 14+40.90	
$\Delta = 20' 45" 26.1" (LT)$	$\Delta = 7' 47" 05.6" (RT)$	$\Delta = 2' 48' 49.6" (LT)$	$\Delta = 32' 17" 14.5" (RT)$	$\Delta = 85' 33' 33.8" (RT)$	
$D = 8' 25' 33.1"$	$D = 8' 11' 06.4"$	$D = 16' 22' 12.8"$	$D = 38' 11' 49.9"$	$D = 42' 26' 28.7"$	
$L = 246.35'$	$L = 877.02'$	$L = 133.25'$	$L = 84.53'$	$L = 201.59'$	
$T = 124.54'$	$T = 506.57'$	$T = 67.44'$	$T = 43.42'$	$T = 124.92'$	
$R = 680.00'$	$R = 700.00'$	$R = 350.00'$	$R = 150.00'$	$R = 135.00'$	
$e = .06$	$e = .06$	$e = .02$	$e = .02$	$e = .02$	
$RO = 138'$	$RO = 138'$	$RO = SEE PLANS$	$RO = SEE PLANS$	$RO = SEE PLANS$	
$Vdes = 45mph$	$Vdes = 45mph$				



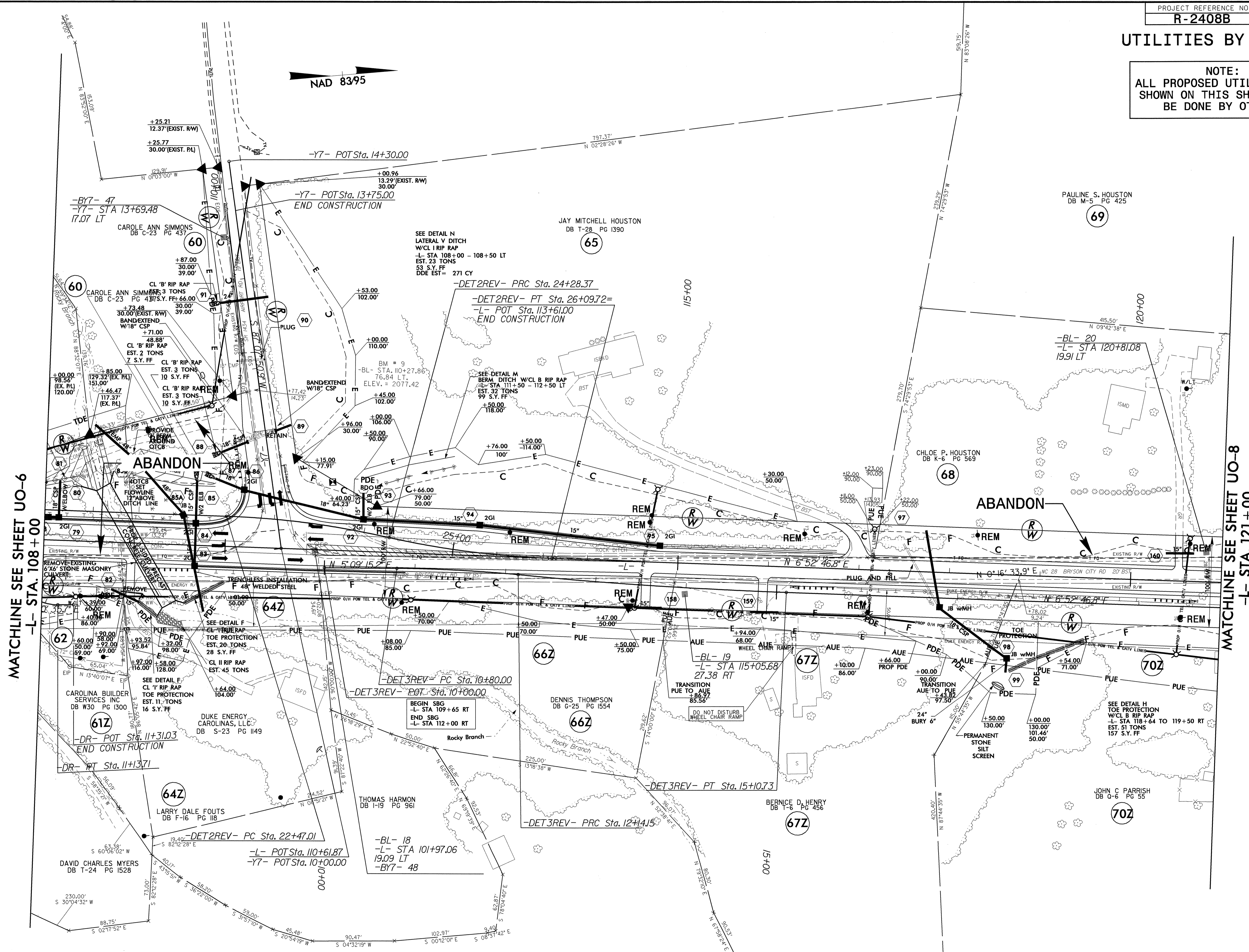
08-FEB-2010 12:10 \\lites\shared\planning\plans\2408b\ut_7_uo5_psh.dgn

UTILITIES BY OTHERS

NOTE:
ALL PROPOSED UTILITY WORK
SHOWN ON THIS SHEET WILL
BE DONE BY OTHERS

5/14/99

NAD 83/95



MATCHLINE SEE SHEET UO-6
-L- STA. 108+00

MATCHLINE SEE SHEET UO-8
-L- STA. 121+00

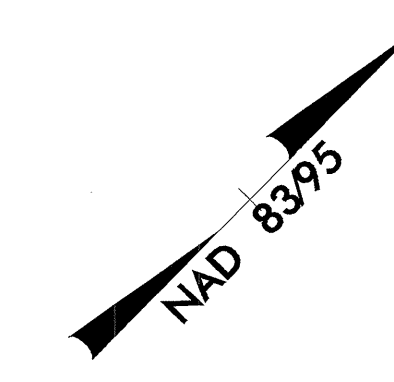
05-FEB-2010 16:00
I:\projects\2408b\p\2408b-ut-9_uo7_psh.dgn

UTILITIES BY OTHERS

NOTE:
ALL PROPOSED UTILITY WORK
SHOWN ON THIS SHEET WILL
BE DONE BY OTHERS

JAMES H. PARRISH
DB 0-32 PG 834
81

-L-
PI Sta 126+36.27
 $\Delta = 38^{\circ} 57' 59.8" (RT)$
 $D = 5' 22" 47.6"$
 $L = 724.30'$
 $T = 376.79'$
 $R = 1,065.00'$
 $e = .06$
 $RO = 156'$
 $Vdes = 55mph$



PAULINE S. HOUSTON
DB M-5 PG 425
69

REGINA M. MOORE
DB B-19 PG 1560
73Z

JESSIE J. WILSON
DB L-15 PG 233
74

LOIS J. MEADOWS
DB N-6 PG 215
72

73Z

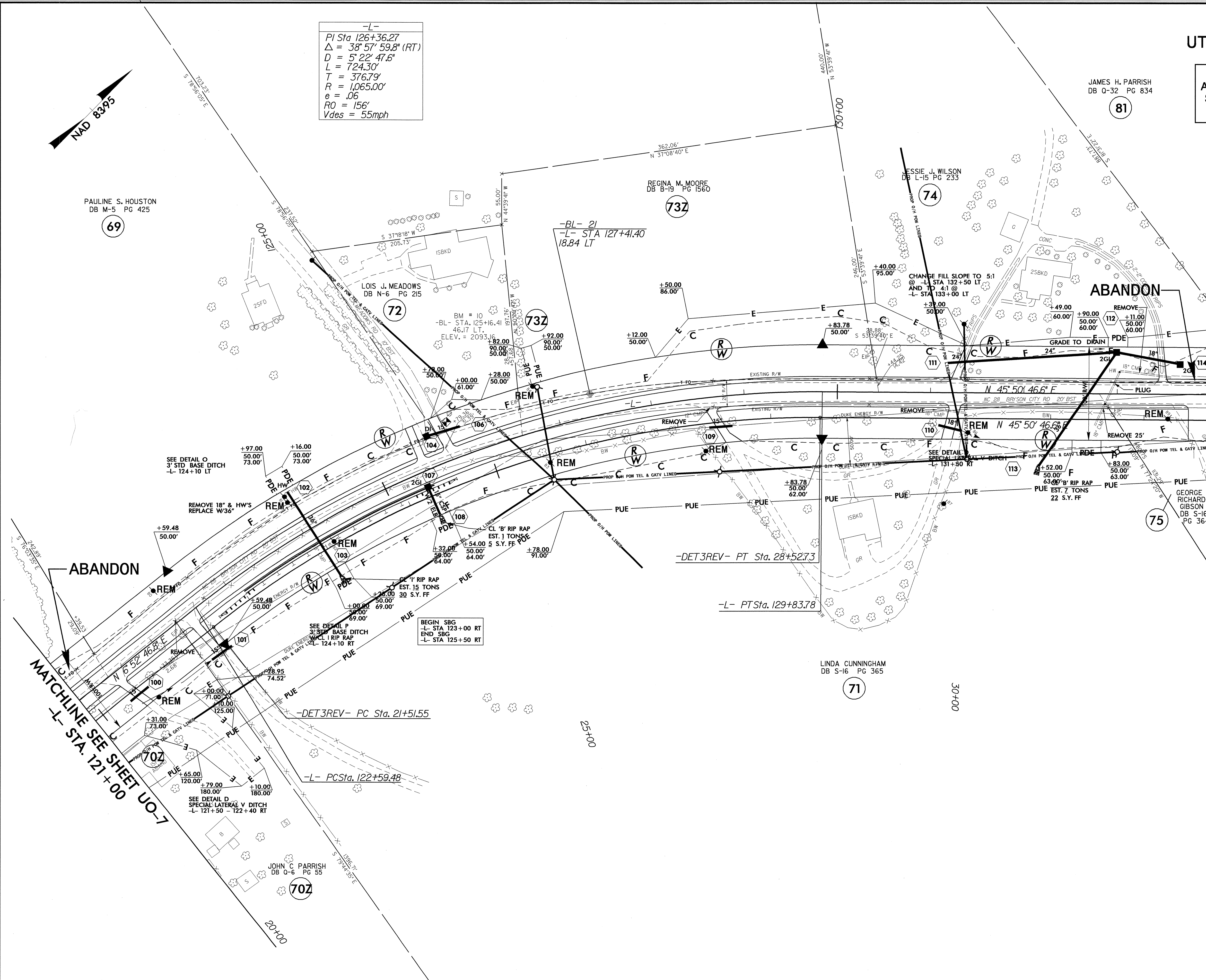
ABANDON

MATCHLINE SEE SHEET U0-9
-L- STA. 134+00

GEORGE RICHARD GIBSON
DB S-16 PG 364
75

LINDA CUNNINGHAM
DB S-16 PG 365
71

JOHN C. PARRISH
DB 0-6 PG 55
70Z



MATCHLINE SEE SHEET U0-7
-L- STA. 121+00

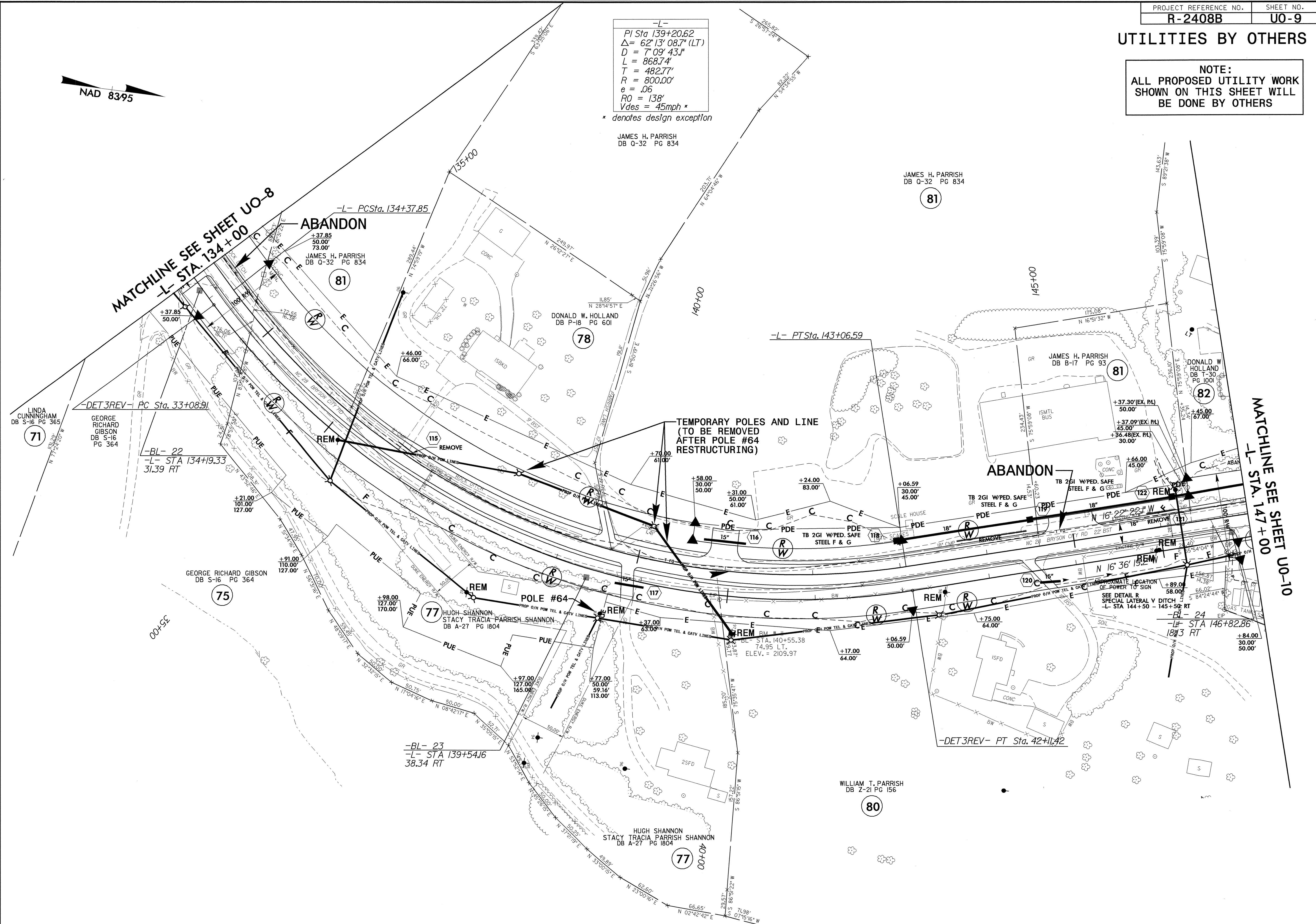
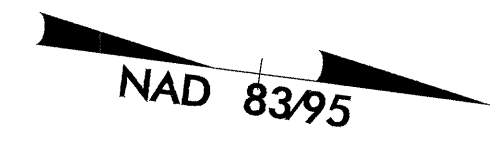
5/14/99
 08-FEB-2010 15:59
 I:\tgs\33833\PROJECTS\2408B\ut_10_u08_psh.dgn

UTILITIES BY OTHERS

NOTE:
ALL PROPOSED UTILITY WORK
SHOWN ON THIS SHEET WILL
BE DONE BY OTHERS

-L-
PI Sta 139+20.62
Δ = 62°13' 08.7" (LT)
D = 7°09' 43.1"
L = 868.74'
T = 482.77'
R = 800.00'
e = .06
RO = 138'
Vdes = 45mph *
* denotes design exception

JAMES H. PARRISH
DB Q-32 PG 834



MATCHLINE SEE SHEET UO-8
-L- STA. 134+00

MATCHLINE SEE SHEET UO-10
-L- STA. 147+00

LINDA CUNNINGHAM
DB S-16 PG 365

GEORGE RICHARD GIBSON
DB S-16 PG 364

GEORGE RICHARD GIBSON
DB S-16 PG 364

-BL- 23
-L- STA 139+54.16
38.34 RT

TEMPORARY POLES AND LINE
(TO BE REMOVED
AFTER POLE #64
RESTRUCTURING)

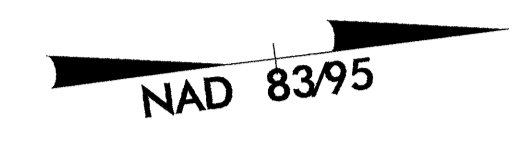
ABANDON

08-FEB-2010 15:57 I:\trng\chris\plans\2408b\ut\11\uo9_psh.dgn

UTILITIES BY OTHERS

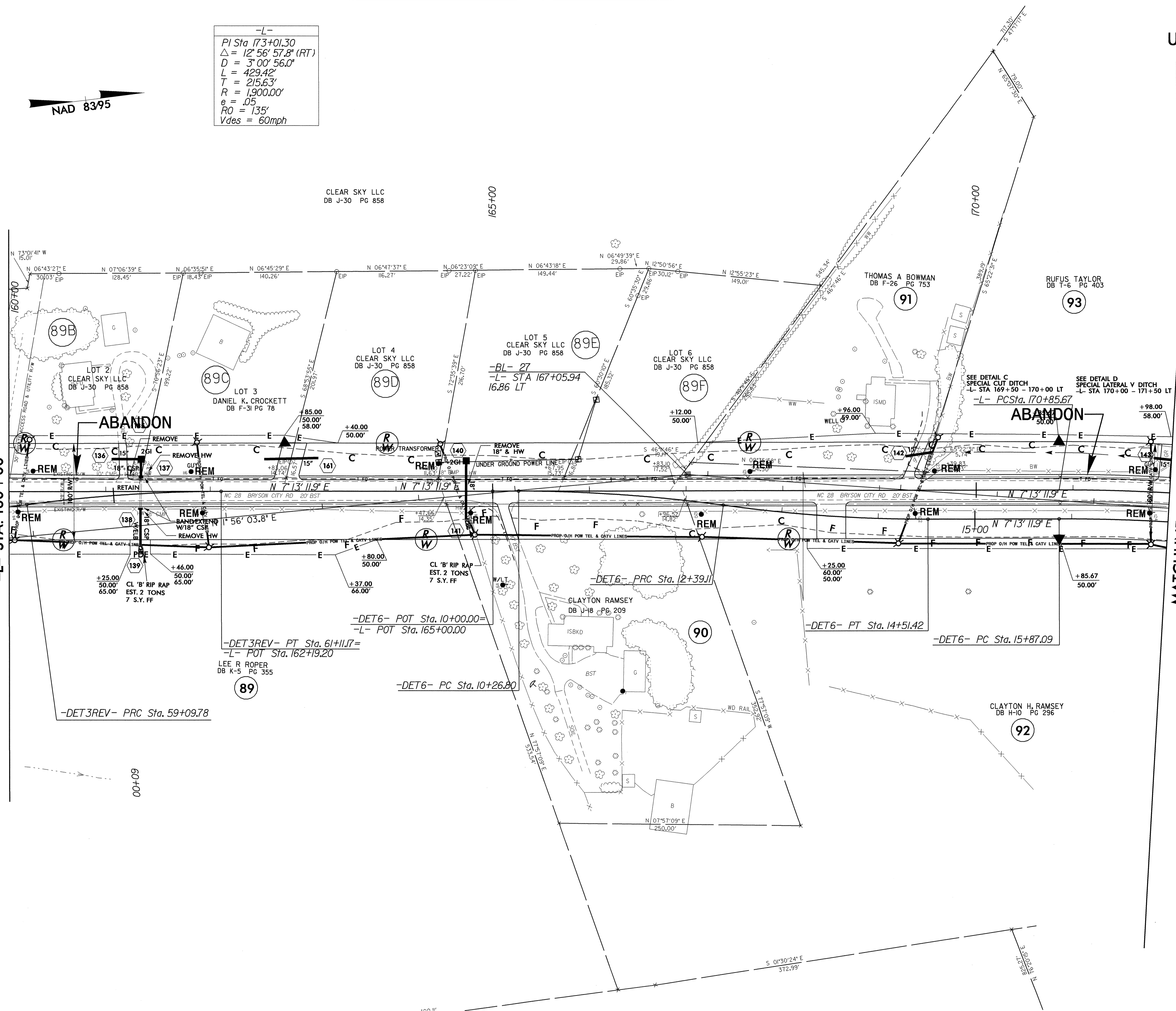
NOTE:
ALL PROPOSED UTILITY WORK
SHOWN ON THIS SHEET WILL
BE DONE BY OTHERS

-L-
PI Sta 173+01.30
 $\Delta = 12^\circ 56' 57.8''$ (RT)
D = 3' 00' 56.0"
L = 429.42'
T = 215.63'
R = 1,900.00'
e = .05
RO = 135'
Vdes = 60mph



MATCHLINE SEE SHEET UO-10
-L- STA. 160+00

MATCHLINE SEE SHEET UO-12
-L- STA. 172+00



5/14/99

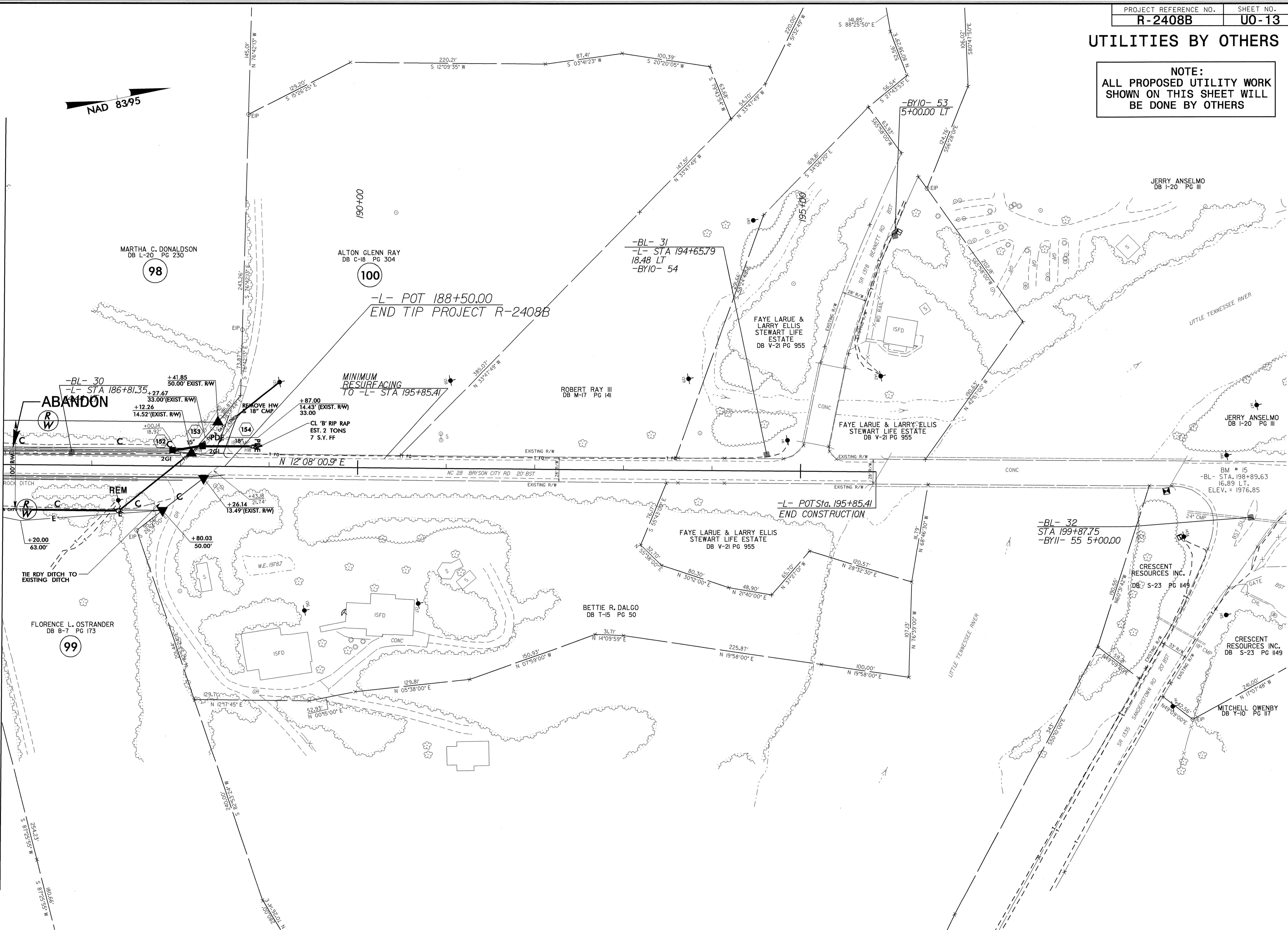
08-FFB-2010 16-45
\\plains\p\lans\2408b\ut_13\011.psh.dgn

UTILITIES BY OTHERS

NOTE:
ALL PROPOSED UTILITY WORK
SHOWN ON THIS SHEET WILL
BE DONE BY OTHERS



MATCHLINE SEE SHEET U0-12
-L- STA. 186+00



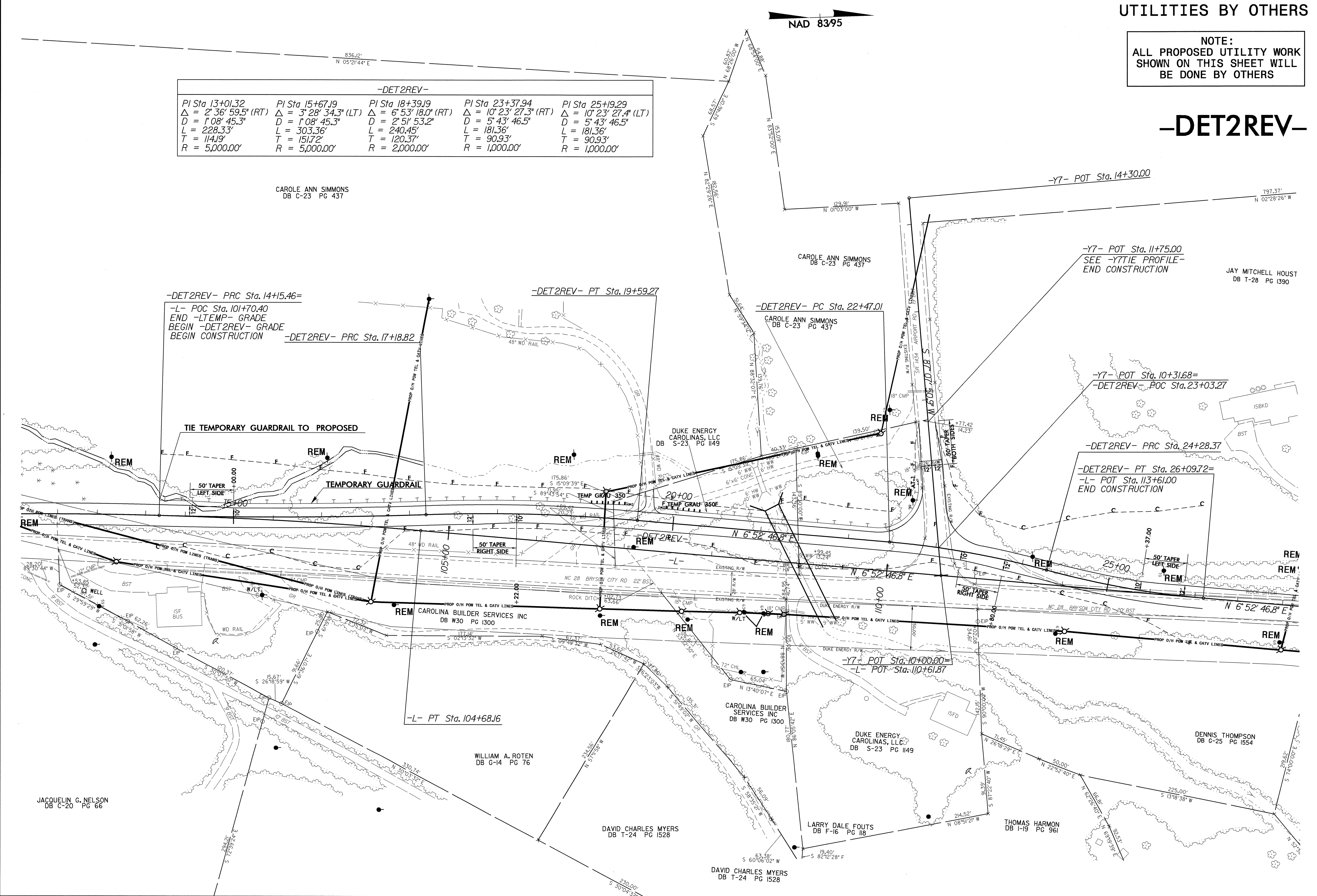
5/14/99
08-FEB-2010 12:03
\\s01\proj\08\plans\2408b\ut_15\013.psh.dgn

UTILITIES BY OTHERS

NOTE:
 ALL PROPOSED UTILITY WORK
 SHOWN ON THIS SHEET WILL
 BE DONE BY OTHERS

-DET2REV-

-DET2REV-				
PI Sta 13+01.32	PI Sta 15+67.19	PI Sta 18+39.19	PI Sta 23+37.94	PI Sta 25+19.29
$\Delta = 2'36"59.5"$ (RT)	$\Delta = 3'28"34.3"$ (LT)	$\Delta = 6'53"18.0"$ (RT)	$\Delta = 10'23"27.3"$ (RT)	$\Delta = 10'23"27.4"$ (LT)
D = 1'08'45.3"	D = 1'08'45.3"	D = 2'51'53.2"	D = 5'43'46.5"	D = 5'43'46.5"
L = 228.33'	L = 303.36'	L = 240.45'	L = 181.36'	L = 181.36'
T = 114.19'	T = 151.72'	T = 120.37'	T = 90.93'	T = 90.93'
R = 5,000.00'	R = 5,000.00'	R = 2,000.00'	R = 1,000.00'	R = 1,000.00'

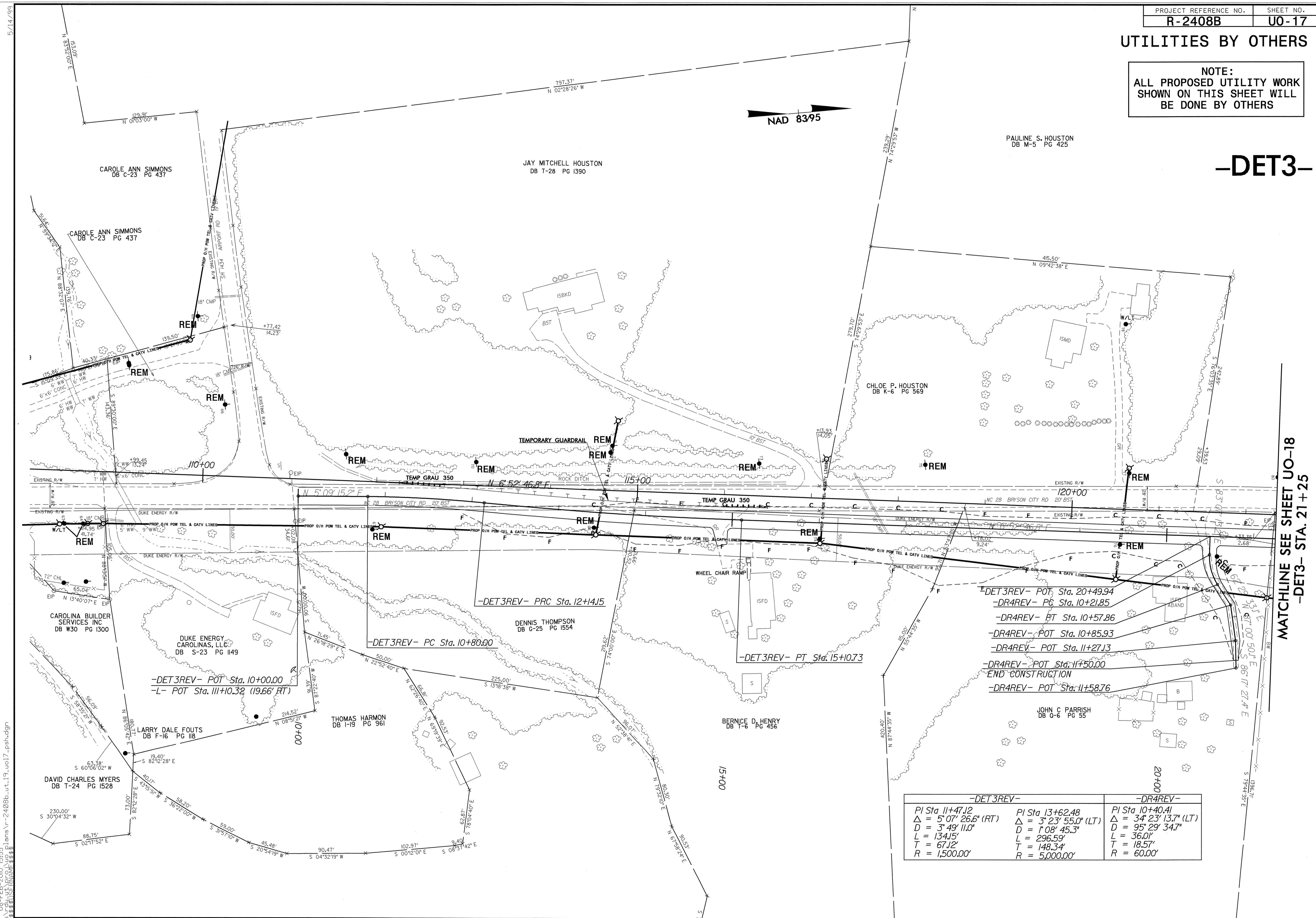


5/14/99
 08-FEB-2010 15:55
 l:\trees\...plans\...r-2408b_ut_18_u016_psh.dgn

UTILITIES BY OTHERS

NOTE:
ALL PROPOSED UTILITY WORK
SHOWN ON THIS SHEET WILL
BE DONE BY OTHERS

-DET3-



- DET3REV- POT Sta. 20+49.94
- DR4REV- PG Sta. 10+21.85
- DR4REV- PT Sta. 10+57.86
- DR4REV- POT Sta. 10+85.93
- DR4REV- POT Sta. 11+27.13
- DR4REV- POT Sta. 11+50.00
- END CONSTRUCTION
- DR4REV- POT Sta. 11+58.76

-DET3REV-		-DR4REV-	
PI Sta 11+47.12	PI Sta 13+62.48	PI Sta 10+40.41	
$\Delta = 5^{\circ}07'26.6''$ (RT)	$\Delta = 3^{\circ}23'55.0''$ (LT)	$\Delta = 34^{\circ}23'13.7''$ (LT)	
D = 134.15'	D = 108.453'	D = 95.29' 34.7"	
L = 67.12'	L = 296.59'	L = 36.01'	
T = 1,500.00'	T = 148.34'	T = 18.57'	
R = 1,500.00'	R = 5,000.00'	R = 60.00'	

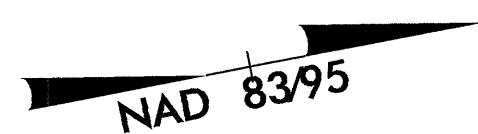
MATCHLINE SEE SHEET U0-18
-DET3- STA. 21 + 25

5/14/09
08-FEB-2010 15:55
I:\trees\11-2408b-ut-19-uo17_psh.dgn

UTILITIES BY OTHERS

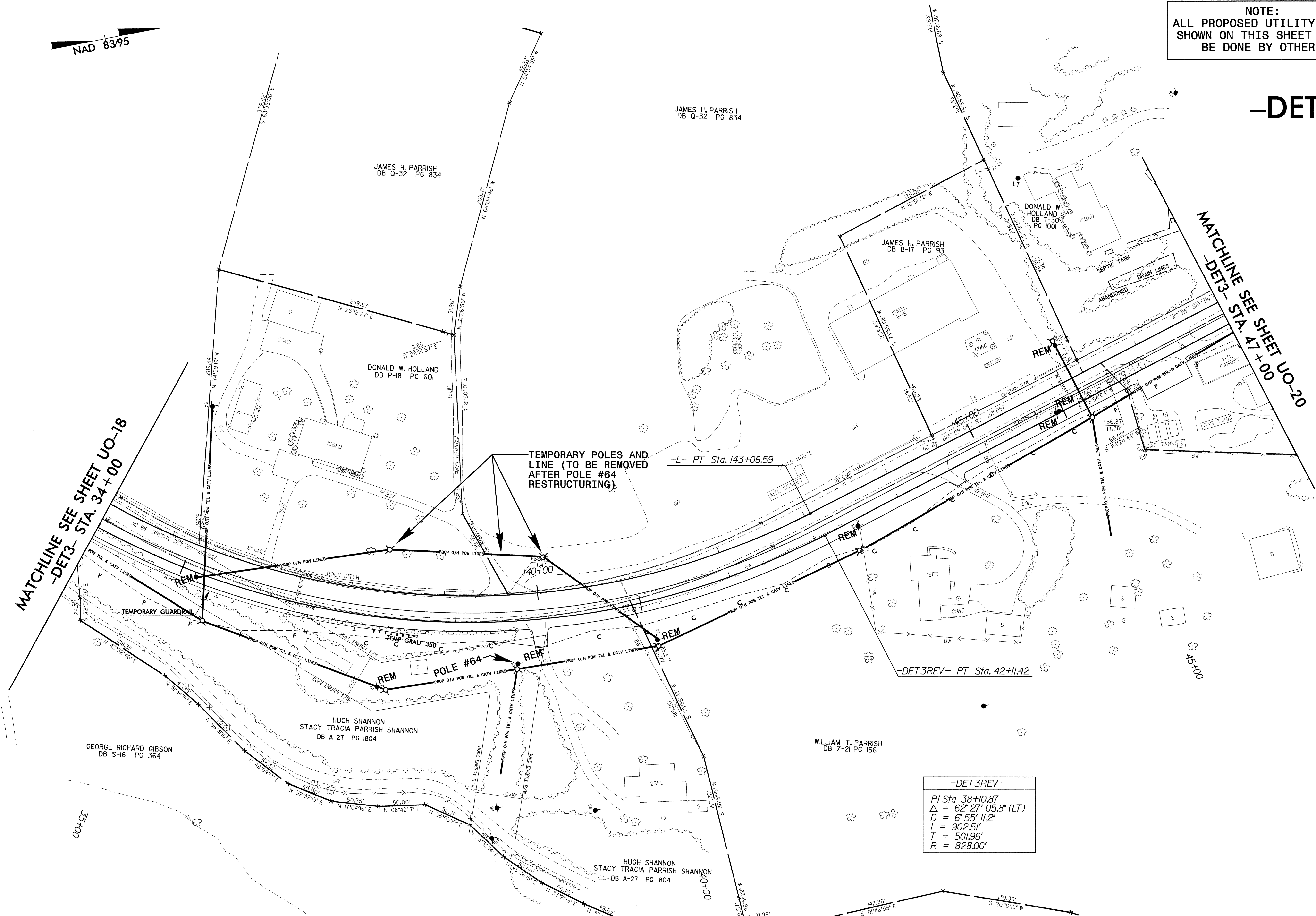
NOTE:
ALL PROPOSED UTILITY WORK
SHOWN ON THIS SHEET WILL
BE DONE BY OTHERS

-DET3-



MATCHLINE SEE SHEET UO-18
-DET3- STA. 34+00

MATCHLINE SEE SHEET UO-20
-DET3- STA. 47+00



-DET3REV-

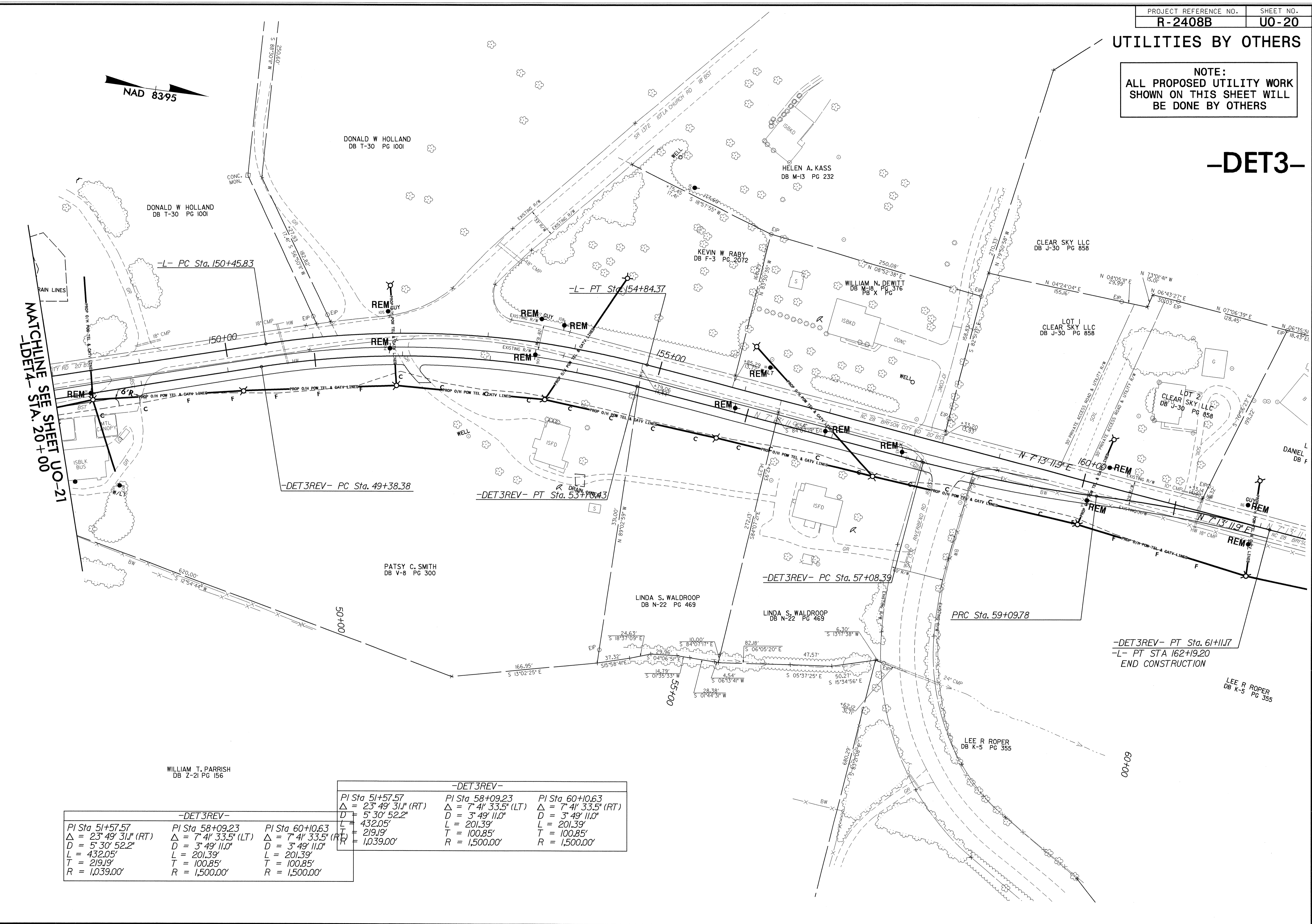
PI Sta	38+08.87
Δ	62° 27' 05.8" (LT)
D	6' 55" 11.2"
L	902.5'
T	501.96'
R	828.00'

5/14/99
08-FEB-2010 15:54
plains\...-2408b-ut-21-uo19_psh.dgn

UTILITIES BY OTHERS

NOTE:
ALL PROPOSED UTILITY WORK
SHOWN ON THIS SHEET WILL
BE DONE BY OTHERS

-DET3-



MATCHLINE SEE SHEET U0-21
-L- DELTA STA. 20+00

-DET3REV-		
PI Sta 51+57.57	PI Sta 58+09.23	PI Sta 60+10.63
$\Delta = 23^\circ 49' 31.1''$ (RT)	$\Delta = 7^\circ 41' 33.5''$ (LT)	$\Delta = 7^\circ 41' 33.5''$ (RT)
D = 5' 30" 52.2"	D = 3' 49" 11.0"	D = 3' 49" 11.0"
L = 432.05'	L = 201.39'	L = 201.39'
T = 219.19'	T = 100.85'	T = 100.85'
R = 1,039.00'	R = 1,500.00'	R = 1,500.00'

-DET3REV-		
PI Sta 51+57.57	PI Sta 58+09.23	PI Sta 60+10.63
$\Delta = 23^\circ 49' 31.1''$ (RT)	$\Delta = 7^\circ 41' 33.5''$ (LT)	$\Delta = 7^\circ 41' 33.5''$ (RT)
D = 5' 30" 52.2"	D = 3' 49" 11.0"	D = 3' 49" 11.0"
L = 432.05'	L = 201.39'	L = 201.39'
T = 219.19'	T = 100.85'	T = 100.85'
R = 1,039.00'	R = 1,500.00'	R = 1,500.00'

-DET3REV- PT Sta. 61+11.7
-L- PT STA 162+19.20
END CONSTRUCTION

5/14/99
08-FEB-2010 15:53
I:\times\cd\plans\2408b\ut_22_u020_psh.dgn

