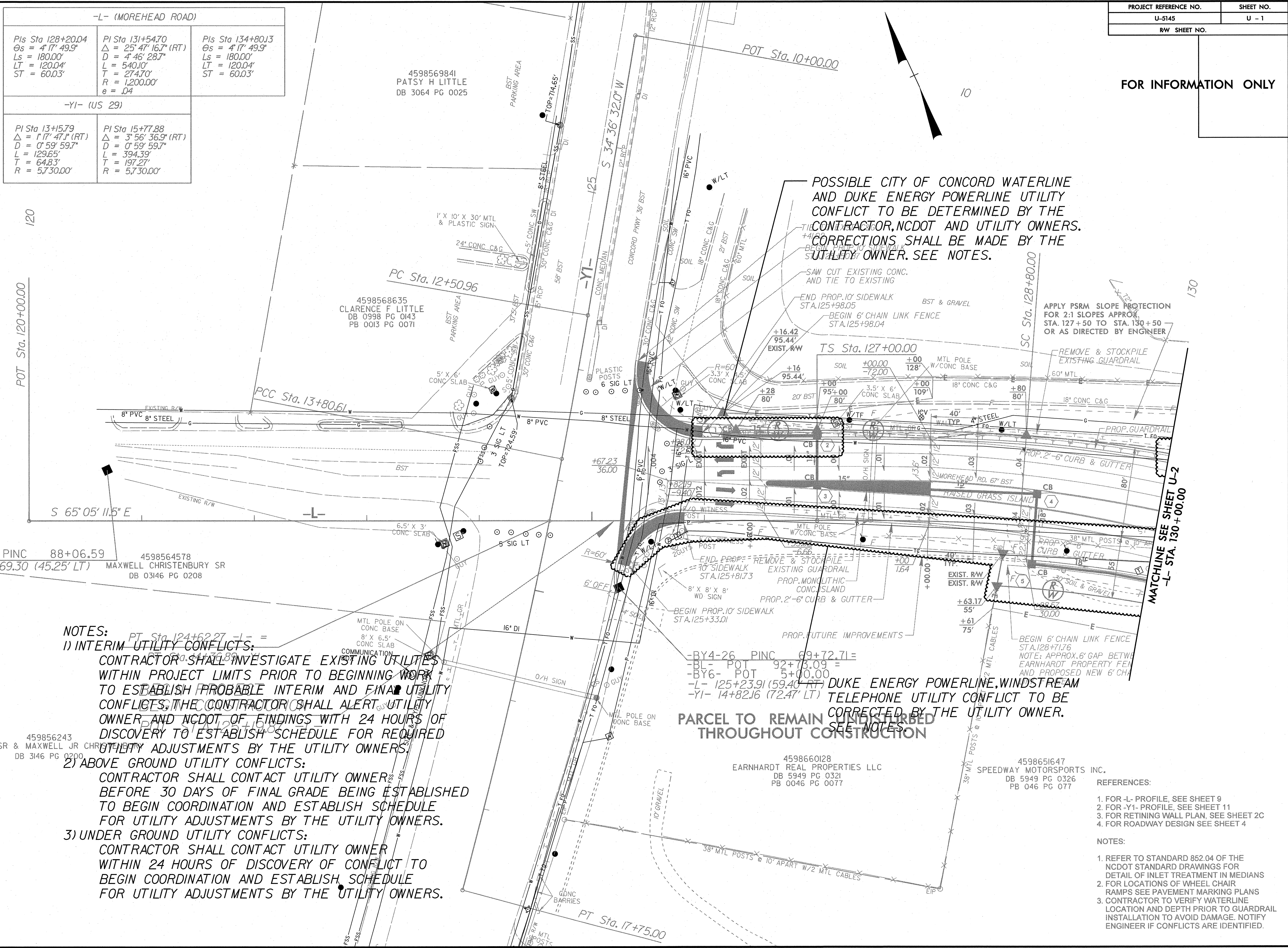


FOR INFORMATION ONLY

-L- (MOREHEAD ROAD)		
PI Sta 128+20.04 Os = 4'17" 49.9" Ls = 180.00' LT = 120.04' ST = 60.03'	PI Sta 131+54.70 Δ = 25' 47" 16.7" (RT) D = 4' 46" 28.7" L = 540.10' T = 274.70' R = 1,200.00' e = .04	PI Sta 134+80.13 Os = 4'17" 49.9" Ls = 180.00' LT = 120.04' ST = 60.03'
-Y1- (US 29)		
PI Sta 13+15.79 Δ = 1'17" 47.1" (RT) D = 0' 59" 59.7" L = 129.65' T = 64.83' R = 5,730.00'	PI Sta 15+77.88 Δ = 3' 56" 36.9" (RT) D = 0' 59" 59.7" L = 394.39' T = 197.27' R = 5,730.00'	



POSSIBLE CITY OF CONCORD WATERLINE AND DUKE ENERGY POWERLINE UTILITY CONFLICT TO BE DETERMINED BY THE CONTRACTOR, NCDOT AND UTILITY OWNERS. CORRECTIONS SHALL BE MADE BY THE UTILITY OWNER. SEE NOTES.

APPLY PSRM SLOPE PROTECTION FOR 2:1 SLOPES APPROX. STA. 127+50 TO STA. 130+50 OR AS DIRECTED BY ENGINEER

MATCHLINE SEE SHEET U-2
-L- STA. 130+00.00

- NOTES:**
- 1) INTERIM UTILITY CONFLICTS:
CONTRACTOR SHALL INVESTIGATE EXISTING UTILITIES WITHIN PROJECT LIMITS PRIOR TO BEGINNING WORK TO ESTABLISH PROBABLE INTERIM AND FINAL UTILITY CONFLICTS. THE CONTRACTOR SHALL ALERT UTILITY OWNER AND NCDOT OF FINDINGS WITH 24 HOURS OF DISCOVERY TO ESTABLISH SCHEDULE FOR REQUIRED UTILITY ADJUSTMENTS BY THE UTILITY OWNERS.
 - 2) ABOVE GROUND UTILITY CONFLICTS:
CONTRACTOR SHALL CONTACT UTILITY OWNER BEFORE 30 DAYS OF FINAL GRADE BEING ESTABLISHED TO BEGIN COORDINATION AND ESTABLISH SCHEDULE FOR UTILITY ADJUSTMENTS BY THE UTILITY OWNERS.
 - 3) UNDER GROUND UTILITY CONFLICTS:
CONTRACTOR SHALL CONTACT UTILITY OWNER WITHIN 24 HOURS OF DISCOVERY OF CONFLICT TO BEGIN COORDINATION AND ESTABLISH SCHEDULE FOR UTILITY ADJUSTMENTS BY THE UTILITY OWNERS.

PARCEL TO REMAIN UNDISTURBED THROUGHOUT CONSTRUCTION

- REFERENCES:
1. FOR -L- PROFILE, SEE SHEET 9
 2. FOR -Y1- PROFILE, SEE SHEET 11
 3. FOR RETAINING WALL PLAN, SEE SHEET 20
 4. FOR ROADWAY DESIGN SEE SHEET 4

- NOTES:
1. REFER TO STANDARD 852.04 OF THE NCDOT STANDARD DRAWINGS FOR DETAIL OF INLET TREATMENT IN MEDIANS
 2. FOR LOCATIONS OF WHEEL CHAIR RAMPS SEE PAVEMENT MARKING PLANS
 3. CONTRACTOR TO VERIFY WATERLINE LOCATION AND DEPTH PRIOR TO GUARDRAIL INSTALLATION TO AVOID DAMAGE. NOTIFY ENGINEER IF CONFLICTS ARE IDENTIFIED.

8/17/99

8/17/99

R = 260.00' e = .02
R = 400.00' e = .02

R = 250.00' R = 107.00' R = 122.40'

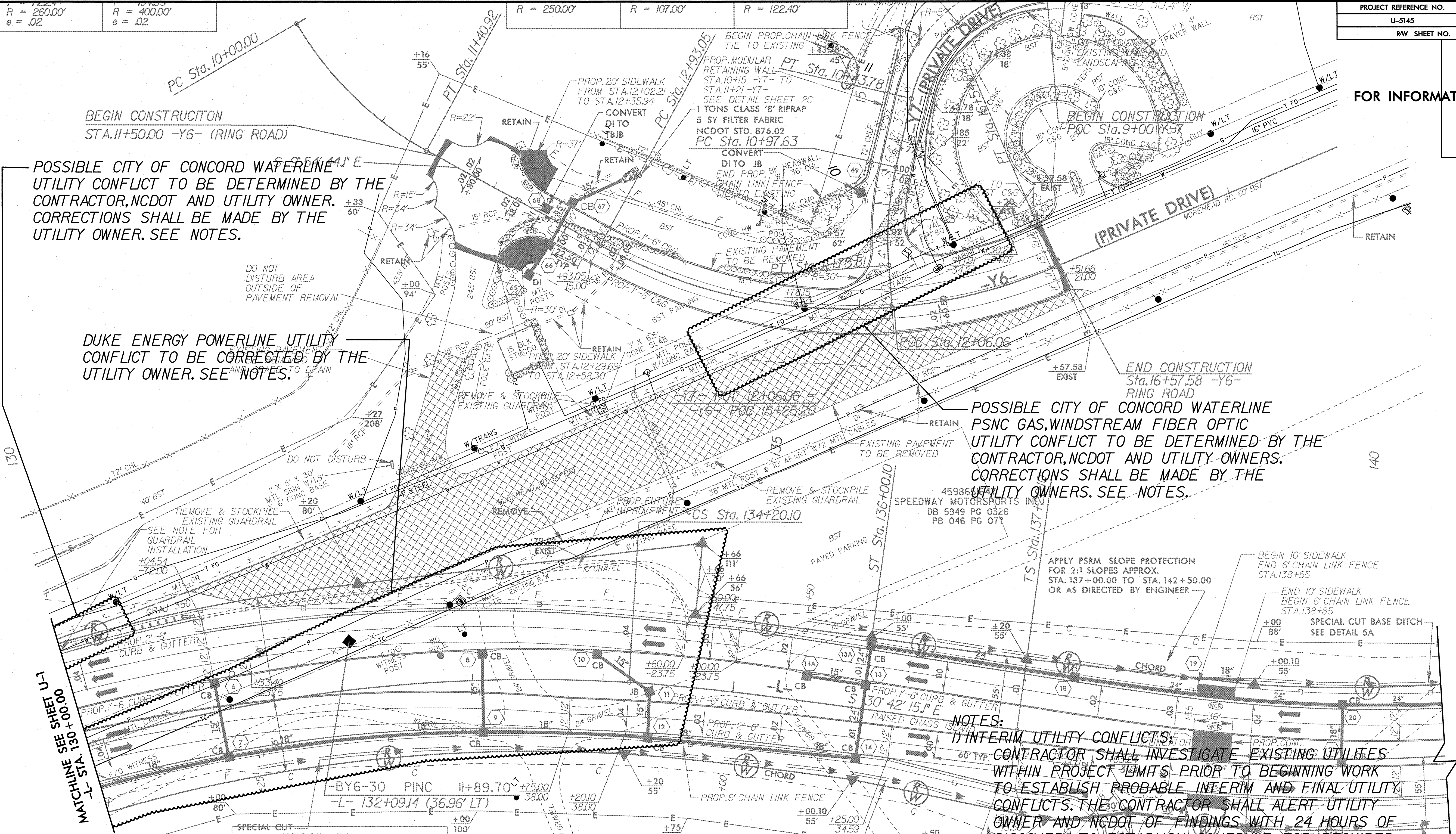
FOR INFORMATION ONLY

BEGIN CONSTRUCTION STA.11+50.00 -Y6- (RING ROAD)

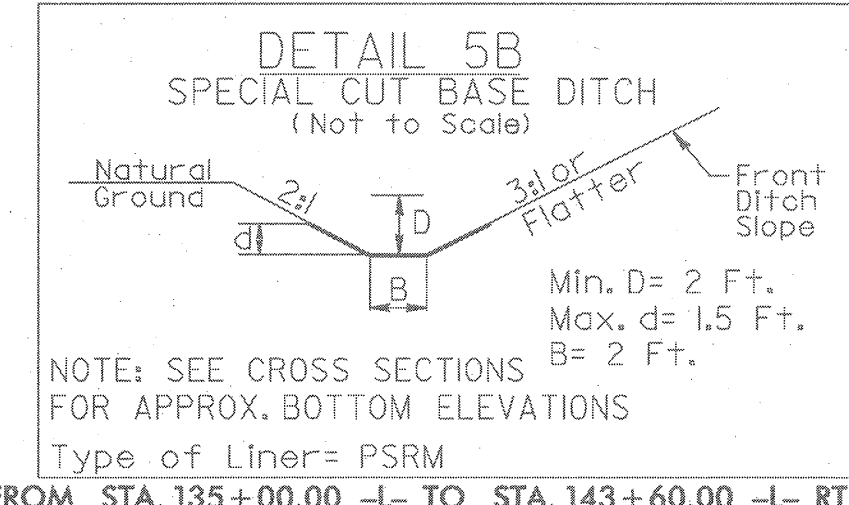
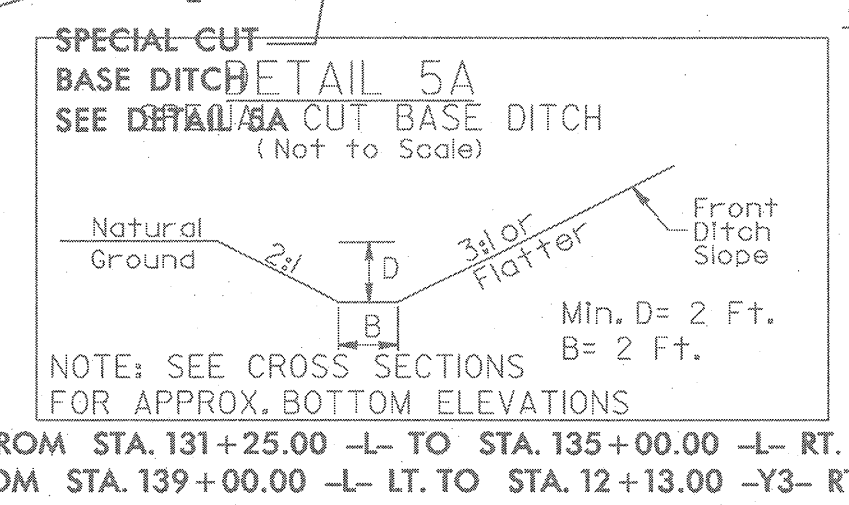
POSSIBLE CITY OF CONCORD WATERLINE UTILITY CONFLICT TO BE DETERMINED BY THE CONTRACTOR, NCDOT AND UTILITY OWNER. CORRECTIONS SHALL BE MADE BY THE UTILITY OWNER. SEE NOTES.

DUKE ENERGY POWERLINE UTILITY CONFLICT TO BE CORRECTED BY THE UTILITY OWNER. SEE NOTES.

POSSIBLE CITY OF CONCORD WATERLINE PSNC GAS, WINDSTREAM FIBER OPTIC UTILITY CONFLICT TO BE DETERMINED BY THE CONTRACTOR, NCDOT AND UTILITY OWNERS. CORRECTIONS SHALL BE MADE BY THE UTILITY OWNERS. SEE NOTES.



SEE SHEET 00000 +130 -L- MATCHLINE



-L- (MOREHEAD ROAD)		
Pls Sta 128+20.04 Os = 4' 17' 49.9" Ls = 180.00' LT = 120.04' ST = 60.03'	Pls Sta 131+54.70 Δ = 25' 47' 16.7" (RT) D = 4' 46' 28.7" L = 540.10' T = 274.70' R = 1,200.00' e = .04	Pls Sta 134+80.13 Os = 4' 17' 49.9" Ls = 180.00' LT = 120.04' ST = 60.03'
Pls Sta 138+40.14 Os = 4' 17' 49.9" Ls = 180.00' LT = 120.04' ST = 60.03'	Pls Sta 143+05.53 Δ = 37' 20' 08.4" (LT) D = 4' 46' 28.7" L = 781.96' T = 405.43' R = 1,200.00' e = .04	Pls Sta 147+42.09 Os = 4' 17' 49.9" Ls = 180.00' LT = 120.04' ST = 60.03'

NOTES:

1) INTERIM UTILITY CONFLICTS: CONTRACTOR SHALL INVESTIGATE EXISTING UTILITIES WITHIN PROJECT LIMITS PRIOR TO BEGINNING WORK TO ESTABLISH PROBABLE INTERIM AND FINAL UTILITY CONFLICTS. THE CONTRACTOR SHALL ALERT UTILITY OWNER AND NCDOT OF FINDINGS WITH 24 HOURS OF DISCOVERY TO ESTABLISH SCHEDULE FOR REQUIRED UTILITY ADJUSTMENTS BY THE UTILITY OWNERS.

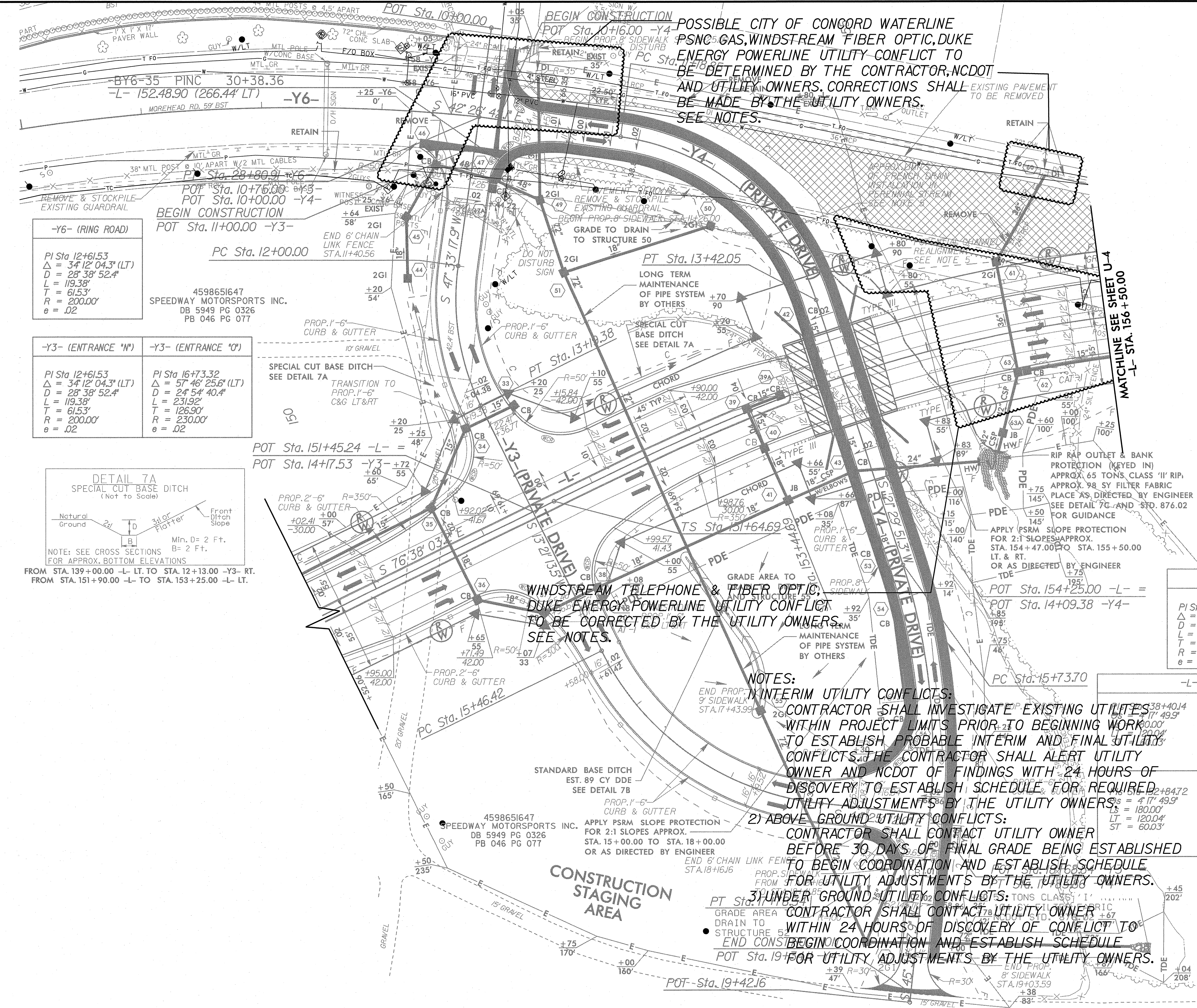
2) ABOVE GROUND UTILITY CONFLICTS: CONTRACTOR SHALL CONTACT UTILITY OWNER BEFORE 30 DAYS OF FINAL GRADE BEING ESTABLISHED TO BEGIN COORDINATION AND ESTABLISH SCHEDULE FOR UTILITY ADJUSTMENTS BY THE UTILITY OWNERS. CONTRACTOR SHALL CONTACT UTILITY OWNER WITHIN 24 HOURS OF DISCOVERY OF CONFLICT TO BEGIN COORDINATION AND ESTABLISH SCHEDULE FOR UTILITY ADJUSTMENTS BY THE UTILITY OWNERS.

- FOR -L- PROFILE SEE SHEET 9
- FOR -Y2- PROFILE SEE SHEET 12
- FOR -Y6- PROFILE SEE SHEET 13
- FOR -Y7- PROFILE SEE SHEET 12
- FOR DESIGN SEE SHEET 5

*****SYSTIME*****

FOR INFORMATION ONLY

8/17/99

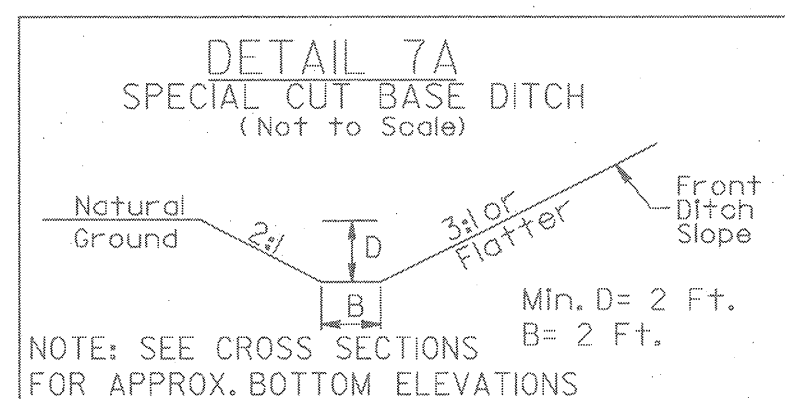


-Y6- (RING ROAD)

PI Sta 12+61.53
 $\Delta = 34' 12" 04.3" (LT)$
 $D = 28' 38" 52.4"$
 $L = 119.38'$
 $T = 61.53'$
 $R = 200.00'$
 $e = .02$

4598651647
 SPEEDWAY MOTORSPORTS INC.
 DB 5949 PG 0326
 PB 046 PG 077

-Y3- (ENTRANCE 'N')	-Y3- (ENTRANCE 'O')
PI Sta 12+61.53 $\Delta = 34' 12" 04.3" (LT)$ $D = 28' 38" 52.4"$ $L = 119.38'$ $T = 61.53'$ $R = 200.00'$ $e = .02$	PI Sta 16+73.32 $\Delta = 57' 46" 25.6" (LT)$ $D = 24' 54" 40.4"$ $L = 231.92'$ $T = 126.90'$ $R = 230.00'$ $e = .02$



FROM STA. 139+00.00 -L- LT. TO STA. 12+13.00 -Y3- RT.
 FROM STA. 151+90.00 -L- TO STA. 153+25.00 -L- LT.

POSSIBLE CITY OF CONCORD WATERLINE
 PSNC GAS, WINDSTREAM FIBER OPTIC, DUKE
 ENERGY POWERLINE UTILITY CONFLICT TO
 BE DETERMINED BY THE CONTRACTOR, NCDOT
 AND UTILITY OWNERS. CORRECTIONS SHALL
 BE MADE BY THE UTILITY OWNERS.
 SEE NOTES.

WINDSTREAM TELEPHONE & FIBER OPTIC,
 DUKE ENERGY POWERLINE UTILITY CONFLICT
 TO BE CORRECTED BY THE UTILITY OWNERS.
 SEE NOTES.

NOTES:

1) **INTERIM UTILITY CONFLICTS:**
 CONTRACTOR SHALL INVESTIGATE EXISTING UTILITIES
 WITHIN PROJECT LIMITS PRIOR TO BEGINNING WORK
 TO ESTABLISH PROBABLE INTERIM AND FINAL UTILITY
 CONFLICTS. THE CONTRACTOR SHALL ALERT UTILITY
 OWNER AND NCDOT OF FINDINGS WITH 24 HOURS OF
 DISCOVERY TO ESTABLISH SCHEDULE FOR REQUIRED
 UTILITY ADJUSTMENTS BY THE UTILITY OWNERS.

2) **ABOVE GROUND UTILITY CONFLICTS:**
 CONTRACTOR SHALL CONTACT UTILITY OWNER
 BEFORE 30 DAYS OF FINAL GRADE BEING ESTABLISHED
 TO BEGIN COORDINATION AND ESTABLISH SCHEDULE
 FOR UTILITY ADJUSTMENTS BY THE UTILITY OWNERS.

3) **UNDER GROUND UTILITY CONFLICTS:**
 CONTRACTOR SHALL CONTACT UTILITY OWNER
 WITHIN 24 HOURS OF DISCOVERY OF CONFLICT TO
 BEGIN COORDINATION AND ESTABLISH SCHEDULE
 FOR UTILITY ADJUSTMENTS BY THE UTILITY OWNERS.

- NOTES:**
- REFER TO STANDARD 852.04 OF THE NCDOT STANDARD DRAWINGS FOR DETAIL OF INLET TREATMENT IN MEDIANS
 - FOR LOCATIONS OF WHEEL CHAIR RAMPS SEE PAVEMENT MARKING PLANS
 - CONTRACTOR TO VERIFY WATERLINE LOCATION AND DEPTH PRIOR TO GUARDRAIL INSTALLATION TO AVOID DAMAGE. NOTIFY ENGINEER IF CONFLICTS ARE IDENTIFIED.

-Y4- (TRAM TRACK)

PI Sta 12+43.68 $\Delta = 63' 56" 33.4" (RT)$ $D = 28' 38" 52.4"$ $L = 223.20'$ $T = 124.83'$ $R = 200.00'$ $e = .02$	PI Sta 16+80.36 $\Delta = 24' 04" 56.7" (RT)$ $D = 11' 27" 33.0"$ $L = 210.16'$ $T = 106.65'$ $R = 500.00'$ $e = .02$
---	---

-L- (MOREHEAD ROAD)

PI Sta 143+05.53 $\Delta = 37' 20" 08.4" (LT)$ $D = 4' 46" 28.7"$ $L = 781.96'$ $T = 405.43'$ $R = 1200.00'$ $e = .04$	PI Sta 147+42.09 $\Delta = 4' 17" 49.9"$ $Ls = 180.00'$ $LT = 120.04'$ $ST = 60.03'$
PI Sta 156+56.74 $\Delta = 29' 09" 12.4" (RT)$ $D = 4' 46" 28.7"$ $L = 610.59'$ $T = 312.06'$ $R = 1200.00'$ $e = .04$	PI Sta 160+15.31 $\Delta = 4' 17" 49.9"$ $Ls = 180.00'$ $LT = 120.04'$ $ST = 60.03'$

- REFERENCES:**
- FOR -L- PROFILE SEE SHEET 10
 - FOR -Y3- PROFILE SEE SHEET 12
 - FOR -Y4- PROFILE SEE SHEET 13
 - FOR ROADWAY DESIGN SEE SHEET 8

