

09/28/09

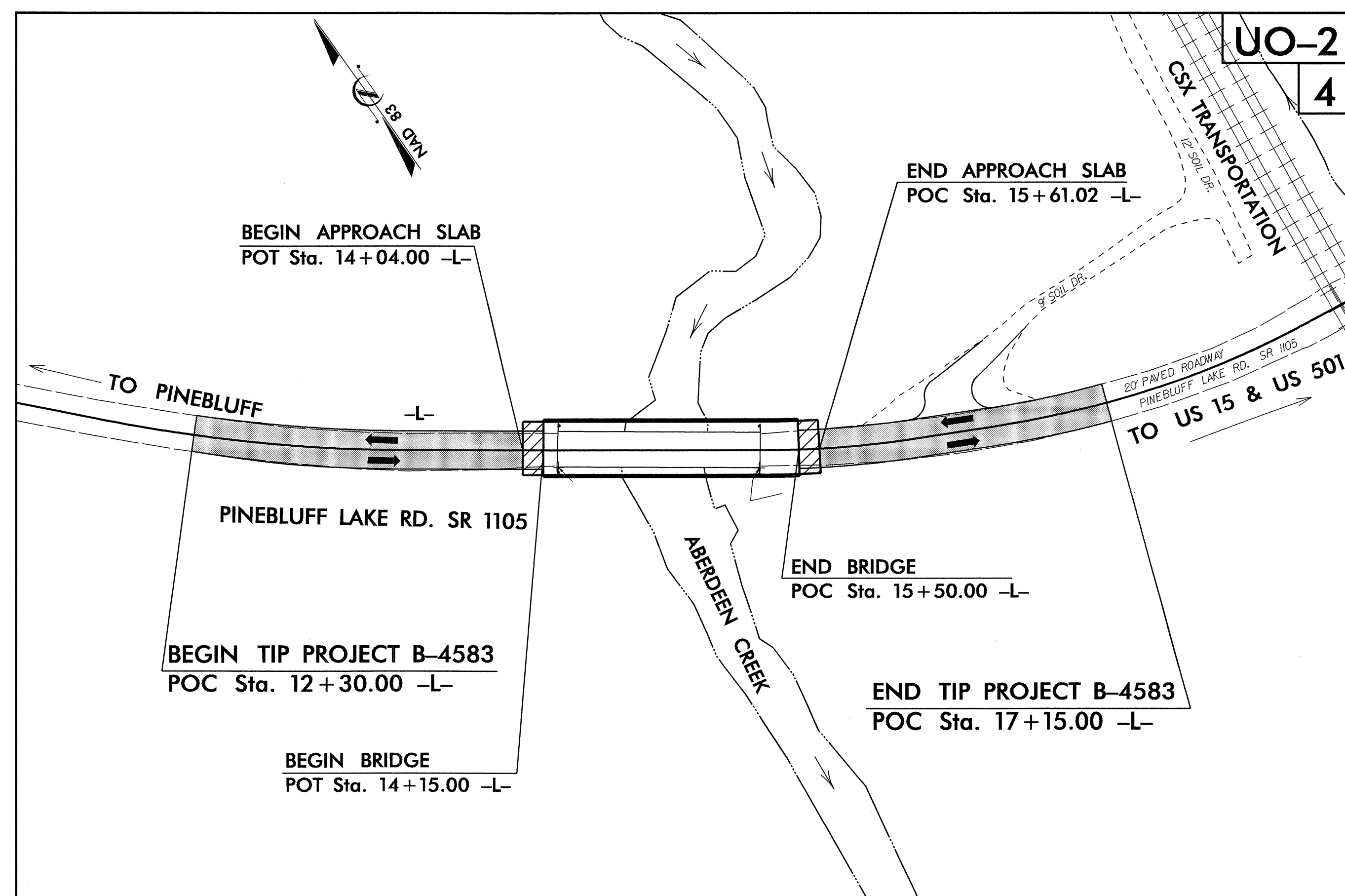
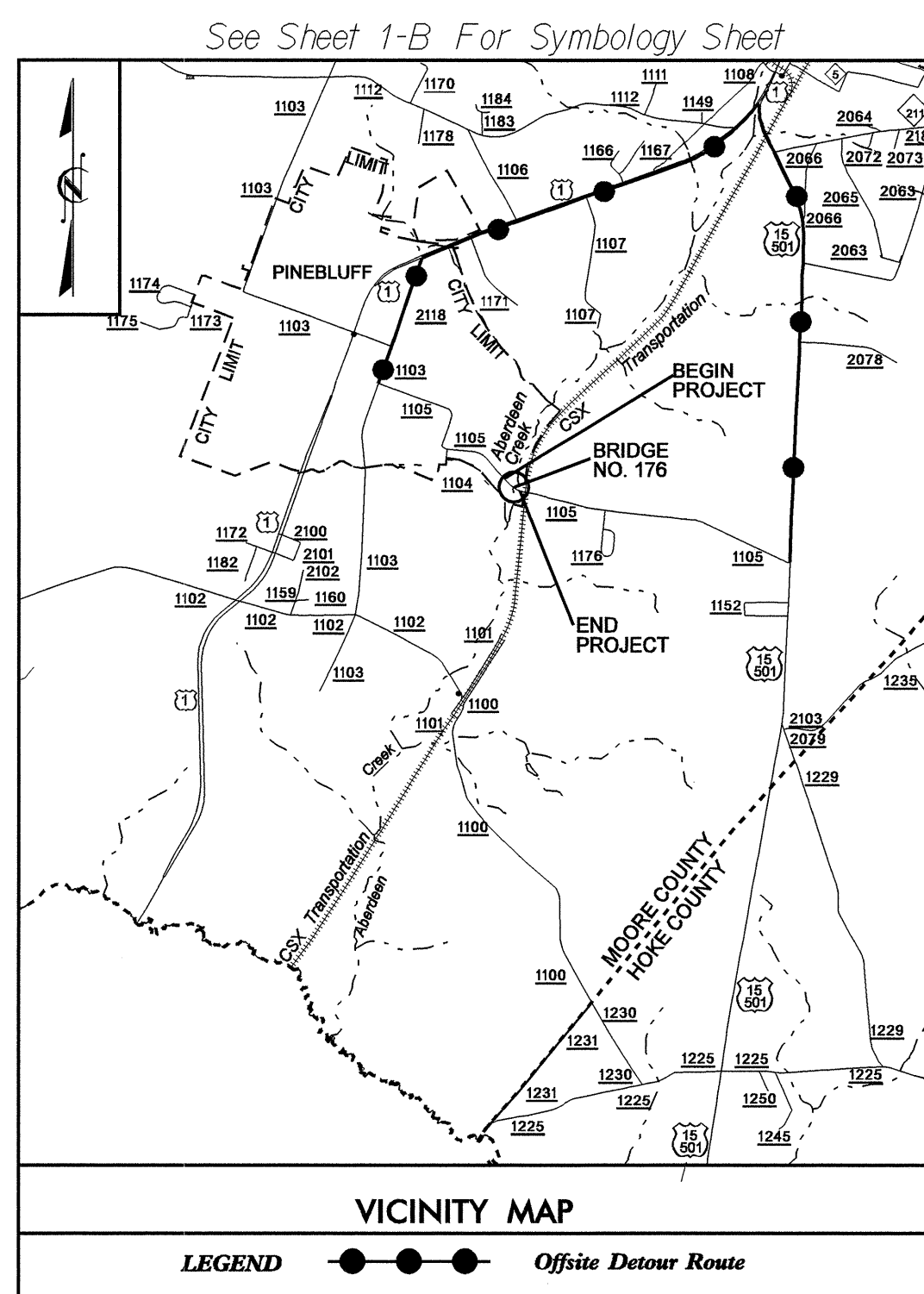
TIP PROJECT: B-4583

T.I.P. NO.	SHEET NO.
B-4583	UO-1

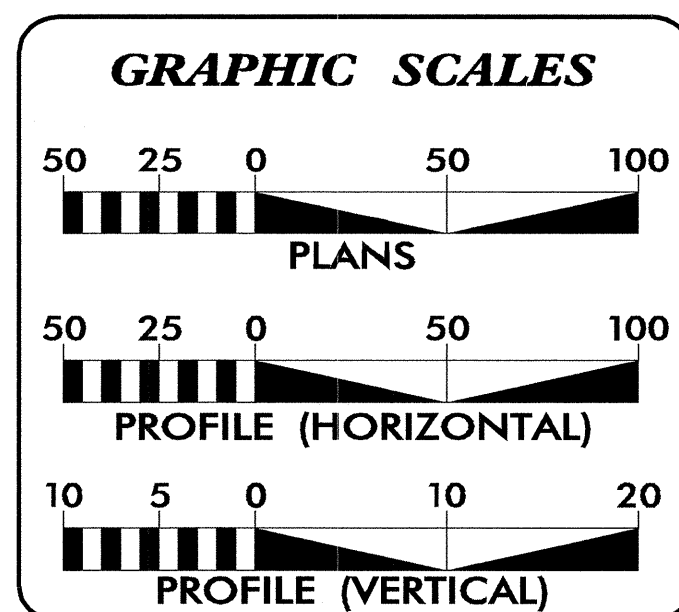
STATE OF NORTH CAROLINA
DIVISION OF HIGHWAYS

UTILITIES BY OTHERS PLANS
MOORE COUNTY

LOCATION: BRIDGE NO. 176 OVER ABERDEEN CREEK
ON SR 1105 (PINEBLUFF LAKE ROAD)
TYPE OF WORK: ELECTRICAL DISTRIBUTION



UO-2
4



SHEET NO.	DESCRIPTION
UO-1	TITLE SHEET
UO-2	UTILITIES BY OTHERS PLAN SHEETS

UTILITY OWNERS ON PROJECT
(1) Electric Distribution - Progress Energy
(2) Telephone - Windstream Communications
(3) CATV - Charter Communications

PREPARED IN THE OFFICE OF:
**DIVISION OF HIGHWAYS
UTILITIES ENGINEERING
SECTION**

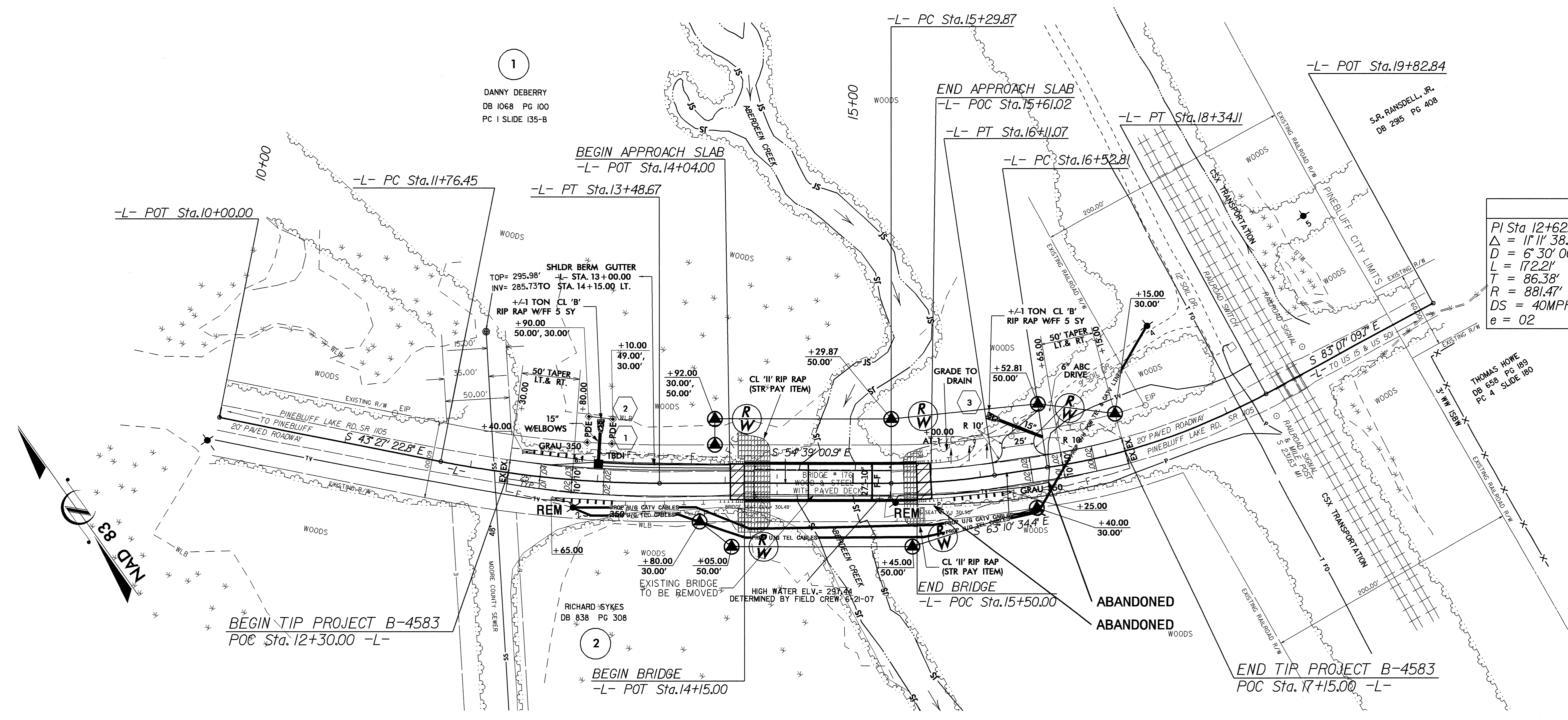
1591 MAIL SERVICES CENTER
RALEIGH NC 27699-1591
PHONE (919) 250-4128
FAX (919) 250-4119

Roger Worthington, P.E. UTILITIES SECTION ENGINEER
Carl Barclay, P.E. UTILITIES SQUAD LEADER PROJECT ENGINEER
Bo Hemphill, P.E. UTILITIES PROJECT DESIGNER

15-DEC-2009 09:28
r:\utilities\pdx\ut\proj\104583\ut_title_uo1.psh.dgn
\$\$\$USERNAME\$\$\$

UTILITIES BY OTHERS

NOTE:
ALL PROPOSED UTILITY WORK
SHOWN ON THIS SHEET WILL
BE DONE BY OTHERS

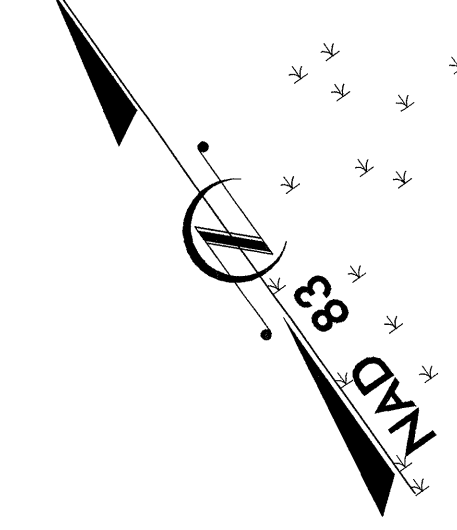


-L-		
PI Sta 12+62.83	PI Sta 15+70.55	PI Sta 17+44.38
$\Delta = 11^{\circ} 11' 38.0''$ (LT)	$\Delta = 8^{\circ} 31' 33.5''$ (LT)	$\Delta = 19^{\circ} 56' 35.3''$ (LT)
$D = 6' 30'' 00.0''$	$D = 10' 30'' 00.0''$	$D = 11' 00'' 00.0''$
$L = 172.21'$	$L = 81.20'$	$L = 181.30'$
$T = 86.38'$	$T = 40.67'$	$T = 91.58'$
$R = 881.47'$	$R = 545.67'$	$R = 520.87'$
$DS = 40MPH$	$DS = 40MPH$	$DS = 35MPH$
$e = 02$	$e = 02$	$e = 02$

1
DANNY DEBERRY
DB 1068 PG 100
PC 1 SLIDE 135-B

2
RICHARD SYKES
DB 838 PG 308

THOMAS HOWE
DB 650 PG 189
PC 4 SLIDE 160



5/14/99
04-FEB-2010 15:12
\\b4583-ut-04-uo02-ppsh.dgn