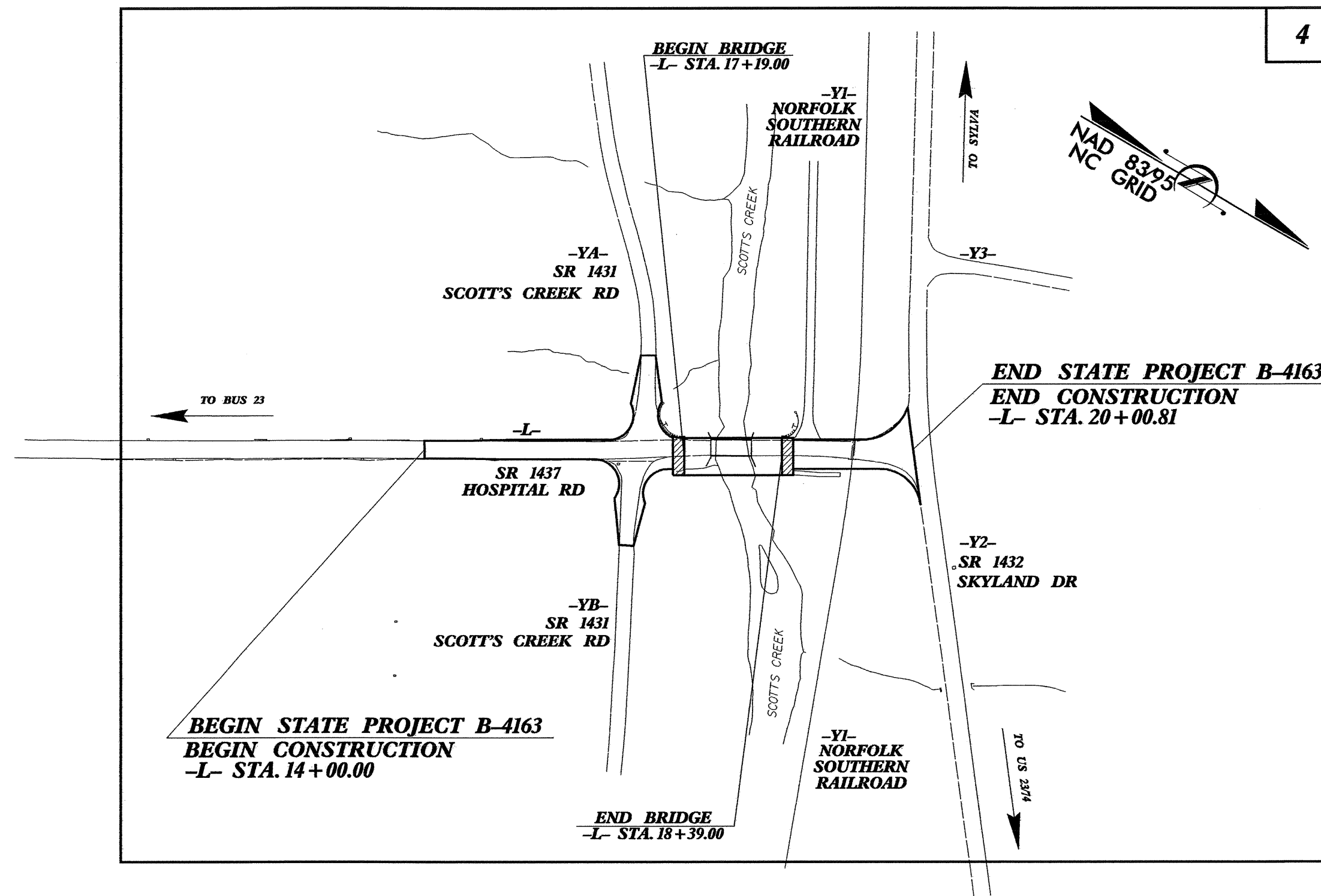


**TIP PROJECT: B-4163**

STATE OF NORTH CAROLINA  
 DIVISION OF HIGHWAYS  
 PLAN FOR PROPOSED  
 HIGHWAY EROSION CONTROL  
**JACKSON COUNTY**

**LOCATION: BRIDGE NO. 123 OVER SCOTT'S CREEK  
 ON SR 1437 (HOSPITAL RD.)**

**TYPE OF WORK: GRADING, PAVING, DRAINAGE & STRUCTURE**



STATE	STATE PROJECT REFERENCE NO.	SHEET NO.	TOTAL SHEETS
N.C.	B-4163	EC-1	
STATE PROJ. NO.	F.A. PROJ. NO.	DESCRIPTION	

**EROSION AND SEDIMENT CONTROL MEASURES**

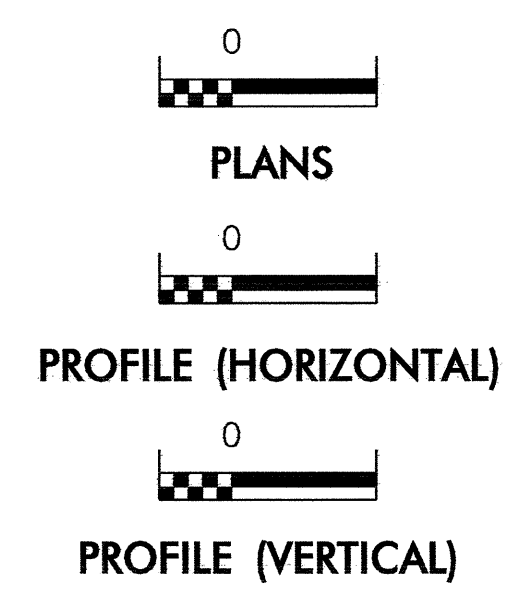
Std. #	Description	Symbol
1630.05	Temporary Silt Ditch	TD
1630.05	Temporary Diversion	TD
1605.01	Temporary Silt Fence	III
1606.01	Special Sediment Control Fence	III
1622.01	Temporary Berms and Slope Drains	TD
1630.01	Riser Basin	RB
1633.01	Silt Basin Type B	SB
1633.01	Temporary Rock Silt Check Type-A	TRSA
1633.01	Temporary Rock Silt Check Type-B	TRSB
1633.01	Wattle	W
1634.01	Temporary Rock Sediment Dam Type-A	TRSDA
1634.02	Temporary Rock Sediment Dam Type-B	TRSDB
1635.01	Rock Pipe Inlet Sediment Trap Type-A	RPIS
1635.02	Rock Pipe Inlet Sediment Trap Type-B	RPIS
1630.04	Stilling Basin	SB
1630.06	Special Stilling Basin	SSB
Rock Inlet Sediment Trap:		
1632.01	Type A	A
1632.02	Type B	B
1632.03	Type C	C
	Skimmer Basin	SKB
	Tiered Skimmer Basin	TSKB
	Infiltration Basin	IB

**THIS PROJECT CONTAINS  
 EROSION CONTROL PLANS  
 FOR CLEARING AND  
 GRUBBING PHASE OF  
 CONSTRUCTION.**

**THIS PROJECT HAS  
 BEEN DESIGNED TO  
 SENSITIVE WATERSHED  
 STANDARDS.**

**ENVIRONMENTALLY  
 SENSITIVE AREA(S) EXIST  
 ON THIS PROJECT**  
*Refer To E. C. Special Provisions  
 for Special Considerations.*

**GRAPHIC SCALE**



ROADSIDE ENVIRONMENTAL UNIT  
 DIVISION OF HIGHWAYS  
 STATE OF NORTH CAROLINA

Prepared In the Office of:  
**ROADSIDE ENVIRONMENTAL UNIT**  
 1 South Wilmington St.  
 Raleigh, NC 27611  
**2006 STANDARD SPECIFICATIONS**

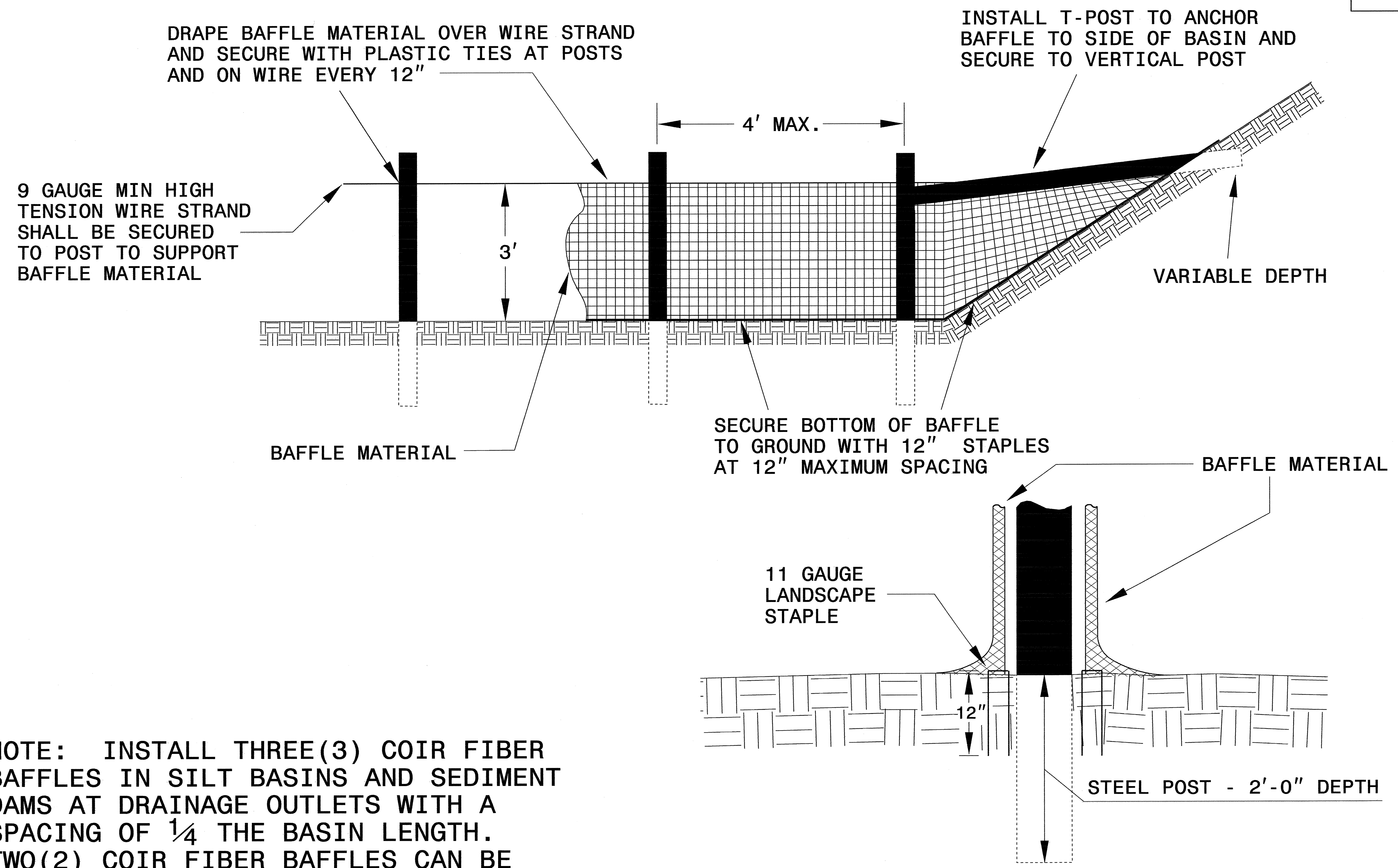
Roadway Standard Drawings  
 The following roadway english standards as appear in "Roadway Standard Drawings"- Roadway Design Unit - N. C. Department of Transportation - Raleigh, N. C., dated July 18, 2006 and the latest revision thereto are applicable to this project and by reference hereby are considered a part of these plans.

1605.01 Temporary Silt Fence	1630.06 Special Stilling Basin
1606.01 Special Sediment Control Fence	1632.03 Rock Inlet Sediment Trap Type C
1607.01 Gravel Construction Entrance	1633.01 Temporary Rock Silt Check Type A
1630.05 Temporary Diversion	

08-DEC-2008 08:51  
 P:\Engineering\REN231813\REN231813.dwg  
 User: jg

PROJECT REFERENCE NO.	SHEET NO.
B-4163	EC-2
RW SHEET NO.	
ROADWAY DESIGN ENGINEER	HYDRAULICS ENGINEER

# COIR FIBER BAFFLE DETAIL

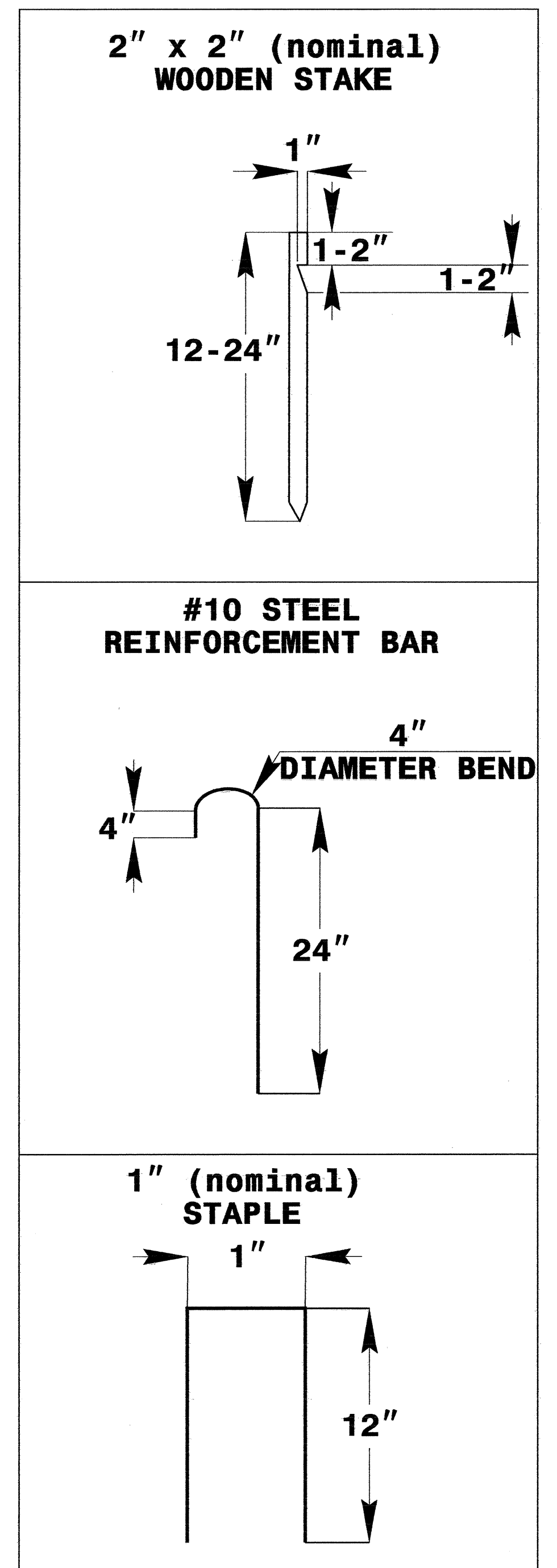
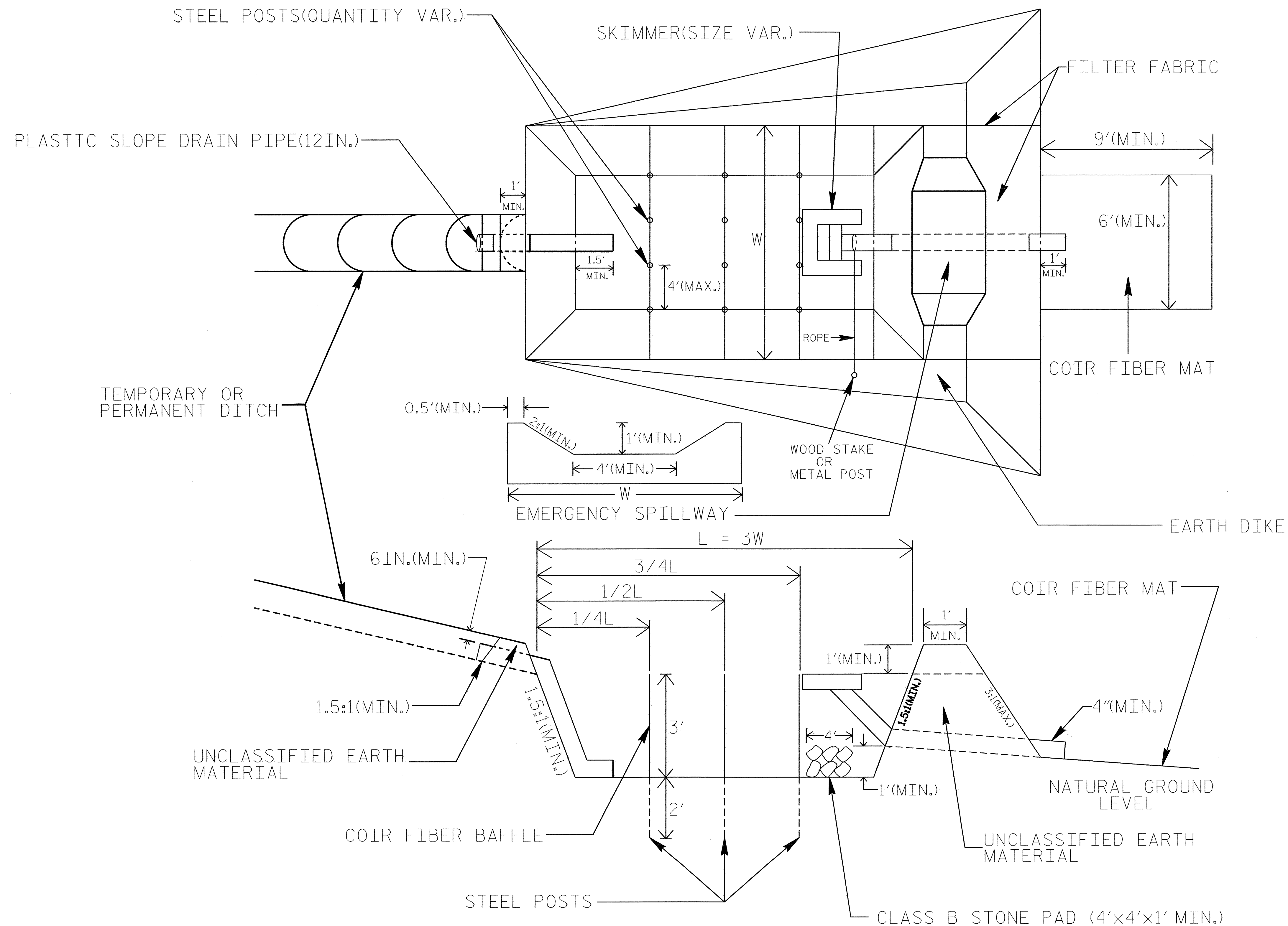


NOTE: INSTALL THREE (3) COIR FIBER BAFFLES IN SILT BASINS AND SEDIMENT DAMS AT DRAINAGE OUTLETS WITH A SPACING OF  $\frac{1}{4}$  THE BASIN LENGTH. TWO (2) COIR FIBER BAFFLES CAN BE INSTALLED IN SILT BASINS AND DAMS LESS THAN 20 FT. IN LENGTH WITH A SPACING OF  $\frac{1}{3}$  THE BASIN LENGTH.

BAFFLE MATERIAL SHALL BE SECURED TO THE BOTTOM AND SIDES OF BASIN USING 12" LANDSCAPE STAPLES

# SKIMMER BASIN WITH BAFFLES DETAIL

PROJECT REFERENCE NO. B-4163	SHEET NO. EC-2A
RW SHEET NO.	
ROADWAY DESIGN ENGINEER	HYDRAULICS ENGINEER



## COIR FIBER MAT ANCHOR OPTIONS

### NOTES

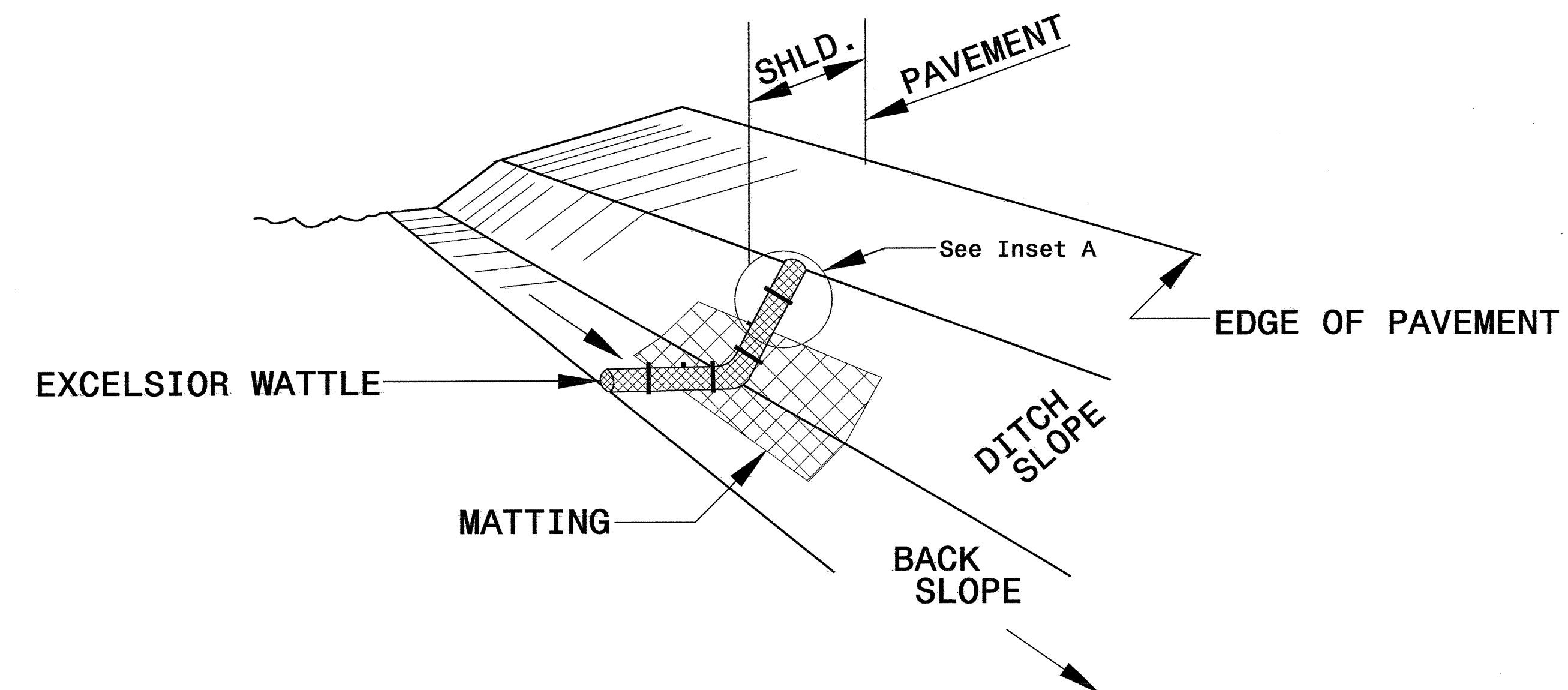
1. SEED AND PLACE MATTING FOR EROSION CONTROL ON INTERIOR SIDESLOPES.
2. LIMIT EARTH DIKE HEIGHT TO 5 FT.
3. THE MINIMUM BASIN WIDTH SHALL BE 9 FT.
4. DETERMINE EMERGENCY SPILLWAY LENGTH (FT.) USING  $Q/0.8$ , WHERE Q IS FLOW RATE (CFS) INTO BASIN.

NOT TO SCALE

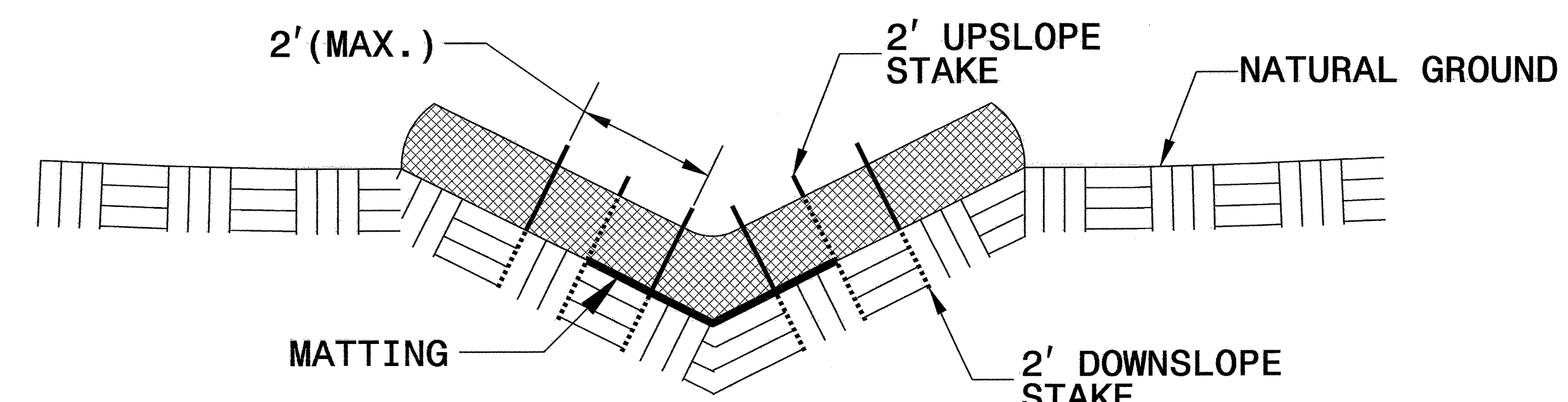


PROJECT REFERENCE NO. B-4163	SHEET NO. EC-2B
RW SHEET NO.	
ROADWAY DESIGN ENGINEER	HYDRAULICS ENGINEER

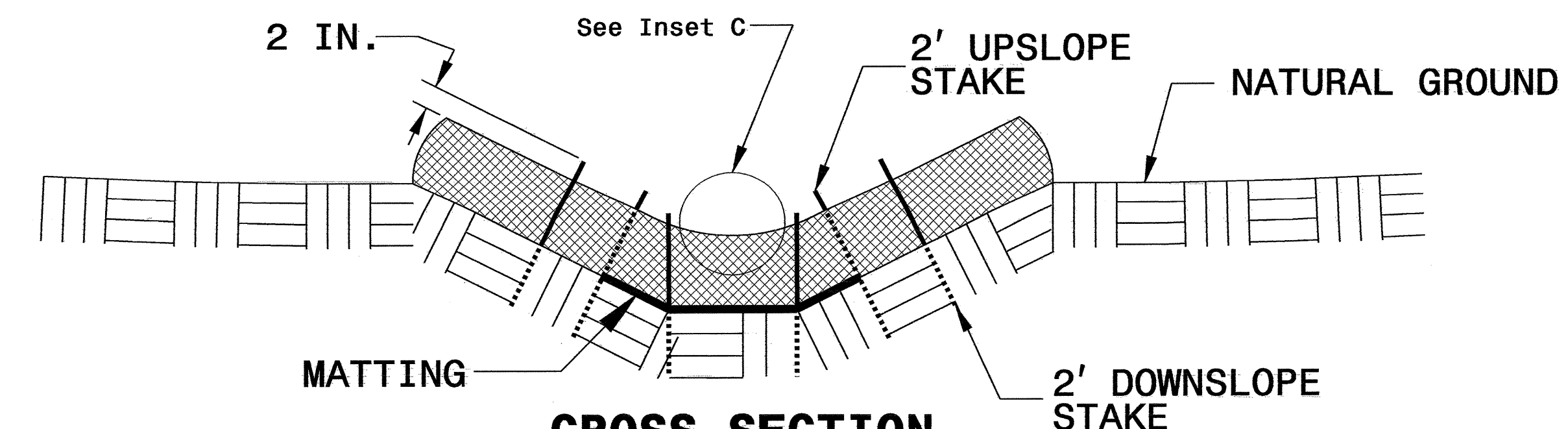
# WATTLE WITH POLYACRYLAMIDE DETAIL



**ISOMETRIC VIEW**



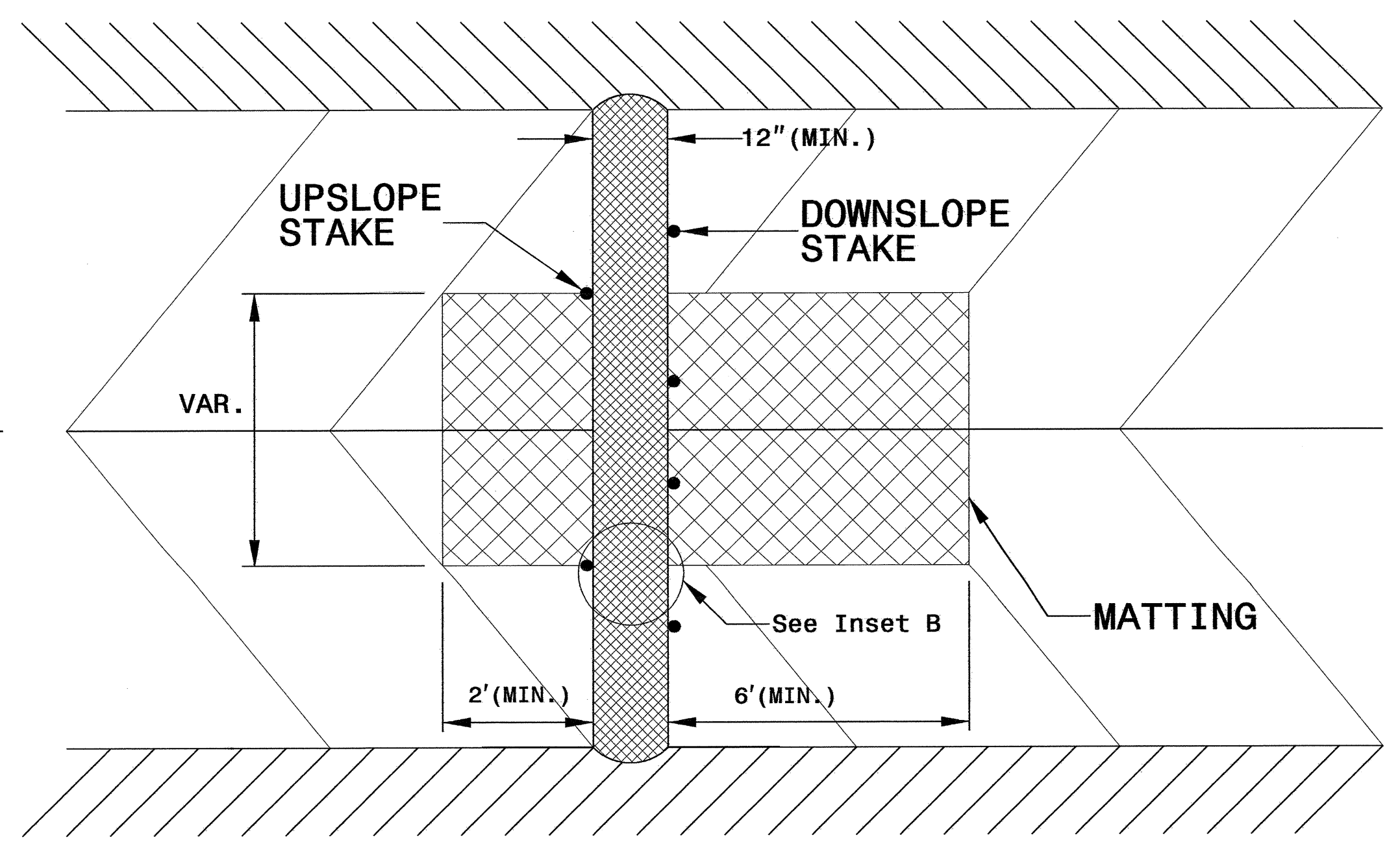
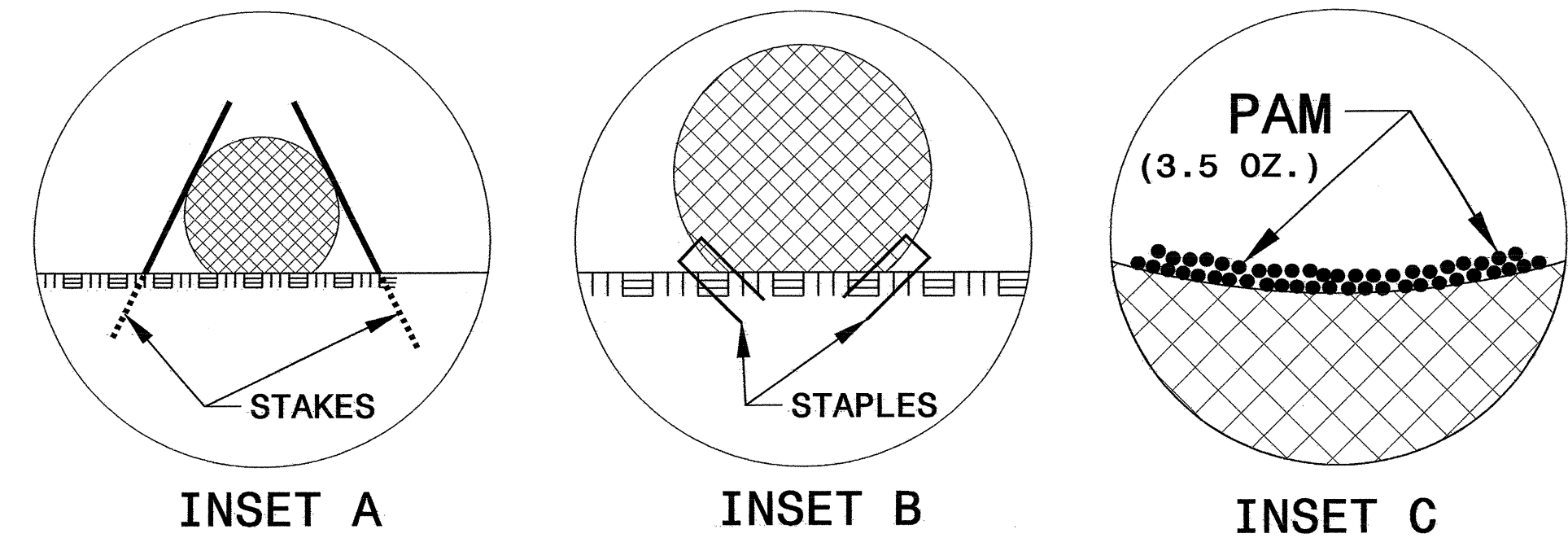
**CROSS SECTION VEE DITCH**



**CROSS SECTION TRAPEZOIDAL DITCH**

**NOTES:**

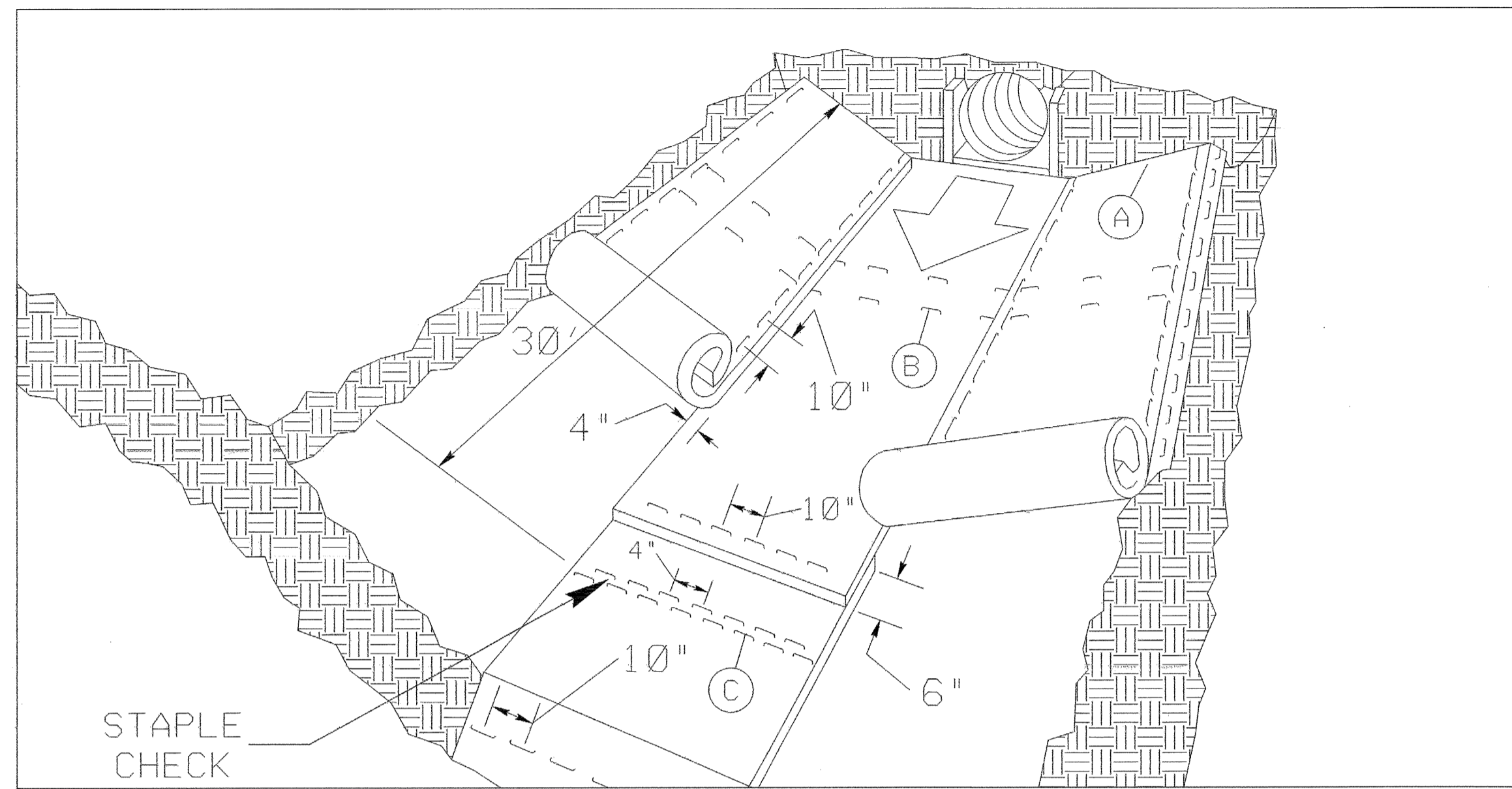
- USE MINIMUM 12 IN. DIAMETER EXCELSIOR WATTLE.
- USE 2 FT. WOODEN STAKES WITH A 2 IN. BY 2 IN. CROSS SECTION.
- INSTALL A MINIMUM OF 2 UPSLOPE STAKES AND 4 DOWNSLOPE STAKES AT AN ANGLE TO WEDGE WATTLE TO BOTTOM OF DITCH.
- PROVIDE STAPLES MADE OF 0.125 IN. DIAMETER STEEL WIRE FORMED INTO A U SHAPE NOT LESS THAN 12" IN LENGTH.
- INSTALL STAPLES APPROXIMATELY EVERY 1 LINEAR FOOT ON BOTH SIDES OF WATTLE AND AT EACH END TO SECURE IT TO THE SOIL.
- INSTALL MATTING IN ACCORDANCE WITH SECTION 1631 OF THE STANDARD SPECIFICATIONS.
- INITIALLY APPLY 3.5 OUNCES OF ANIONIC OR NEUTRALLY CHARGED POLYACRYLAMIDE (PAM) OVER WATTLE WHERE WATER WILL FLOW AND AFTER EVERY RAINFALL EVENT THAT IS EQUAL TO OR EXCEEDS 0.25 IN.



**TOP VIEW**

PROJECT REFERENCE NO. B-4163	SHEET NO. EC-20
RW SHEET NO.	
ROADWAY DESIGN ENGINEER	HYDRAULICS ENGINEER

# MATTING INSTALLATION DETAIL



**MATTING IN DITCHES**

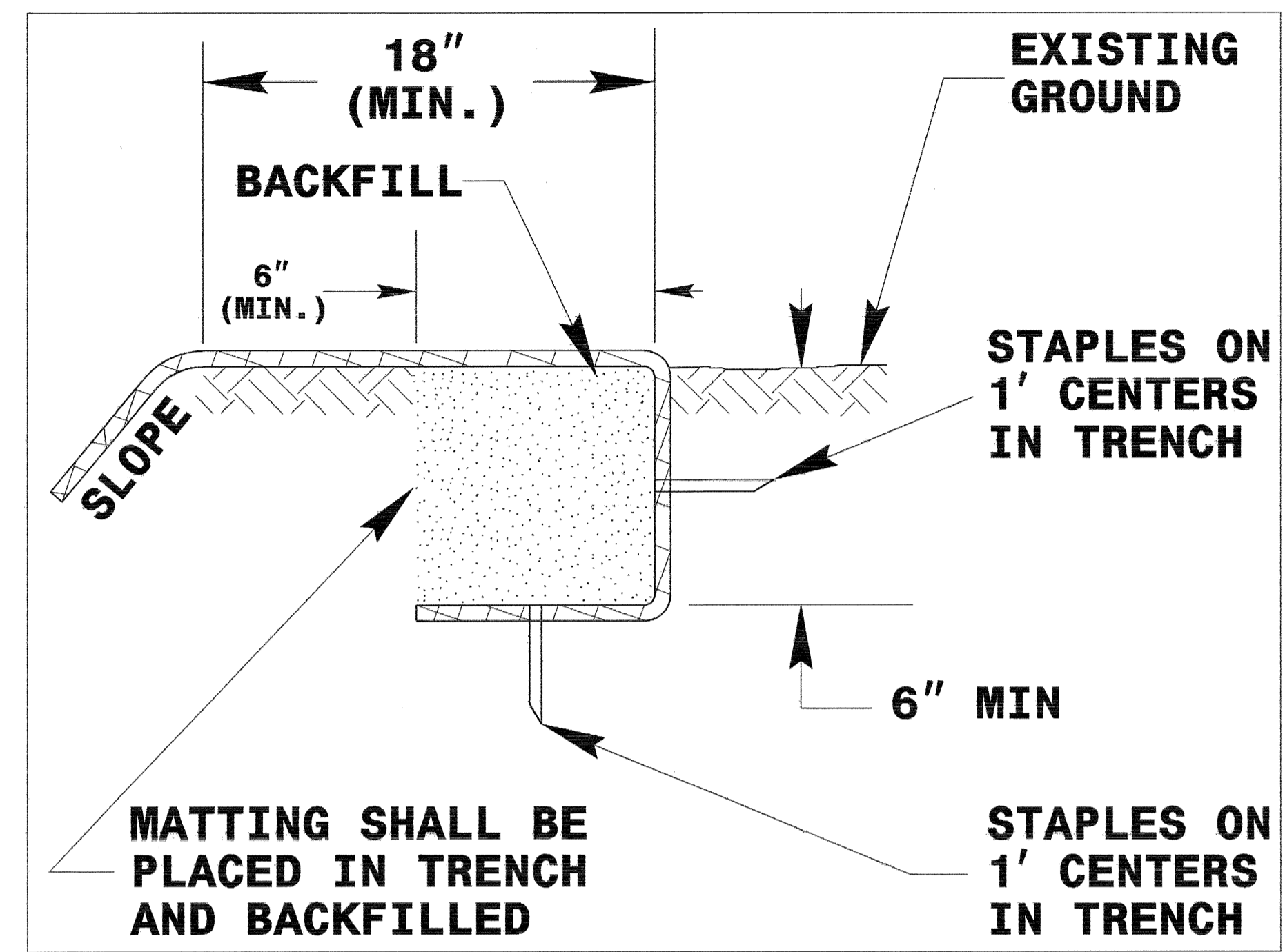
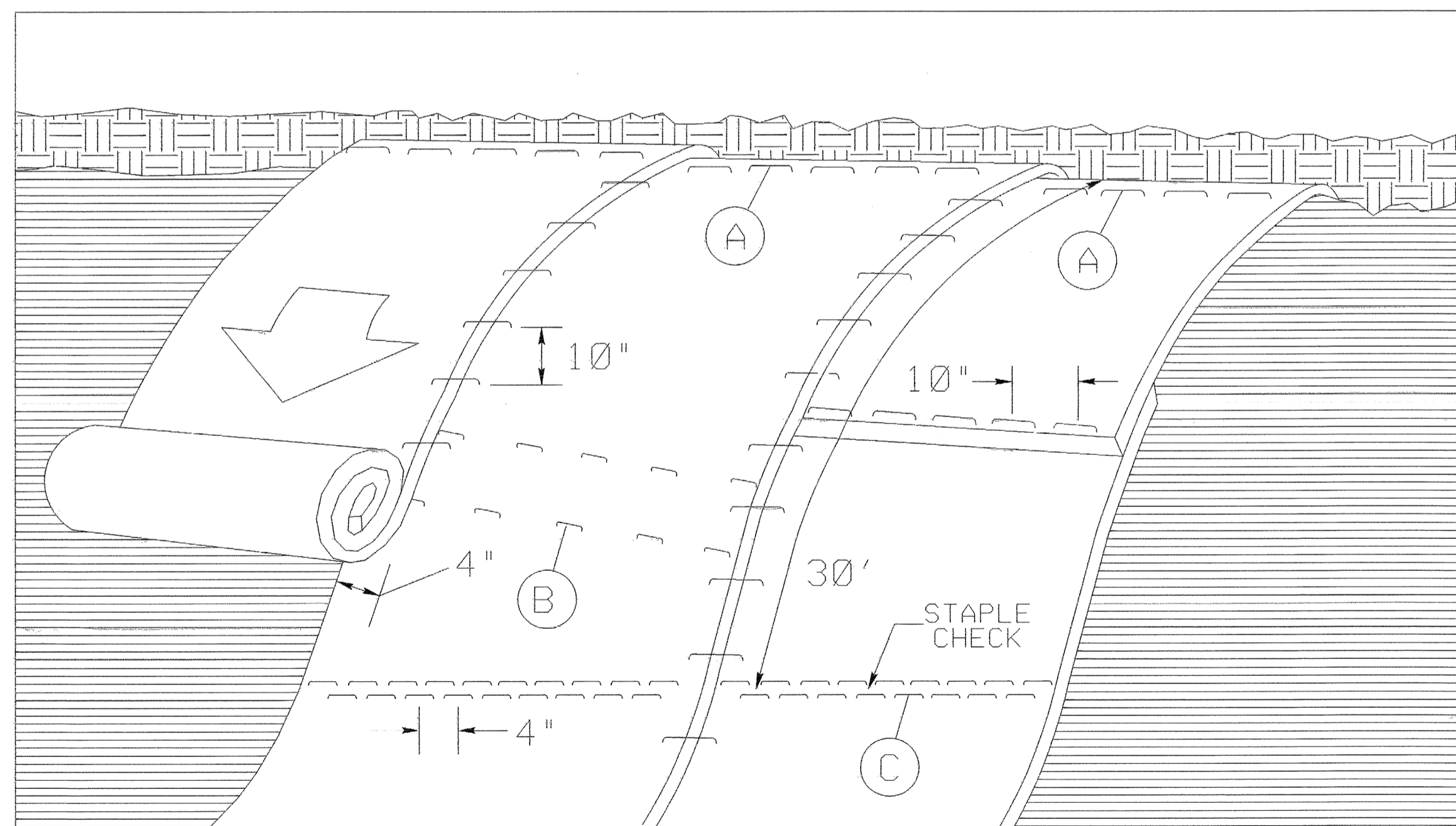


DIAGRAM (A)



**MATTING ON SLOPES**

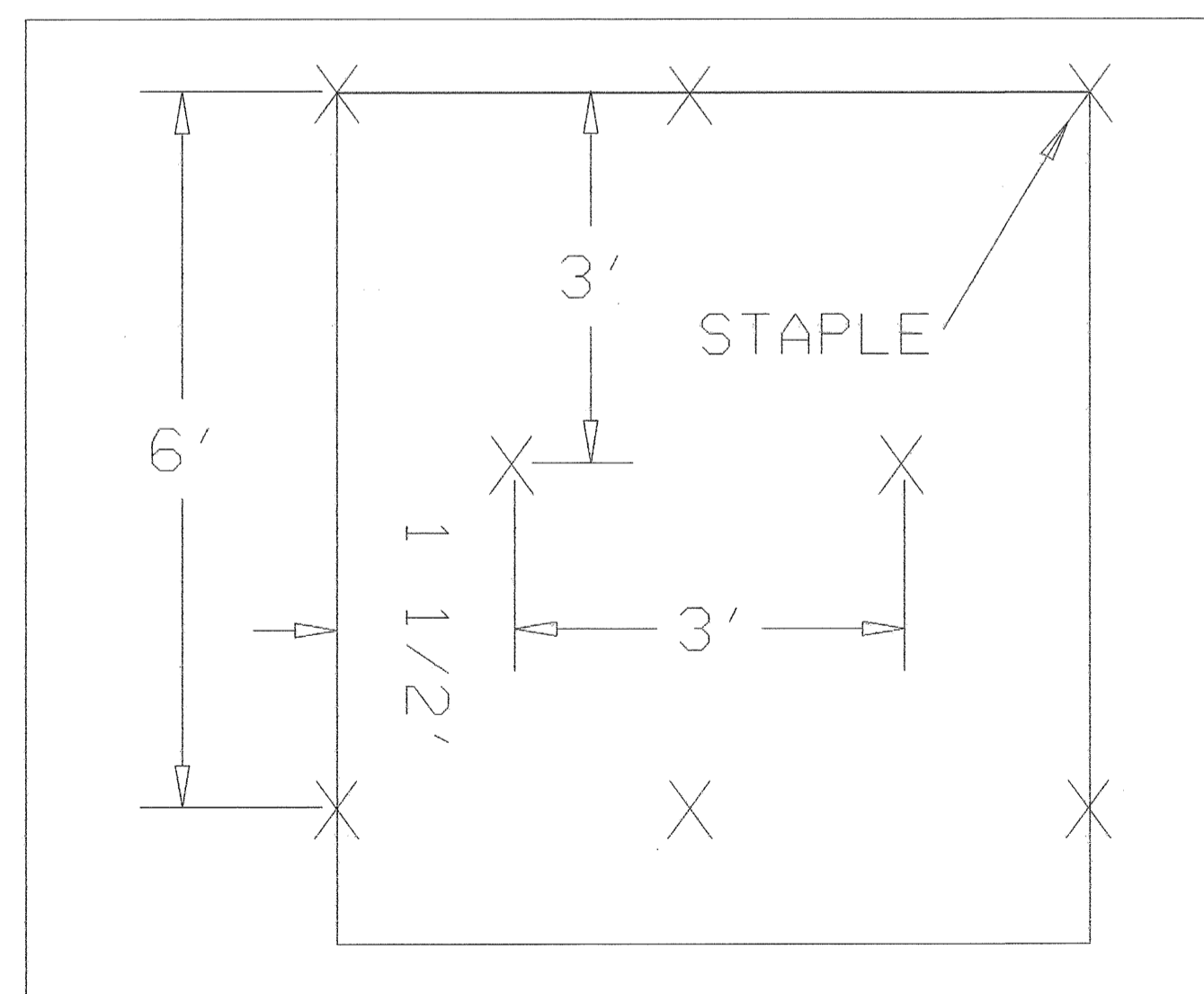


DIAGRAM (B)

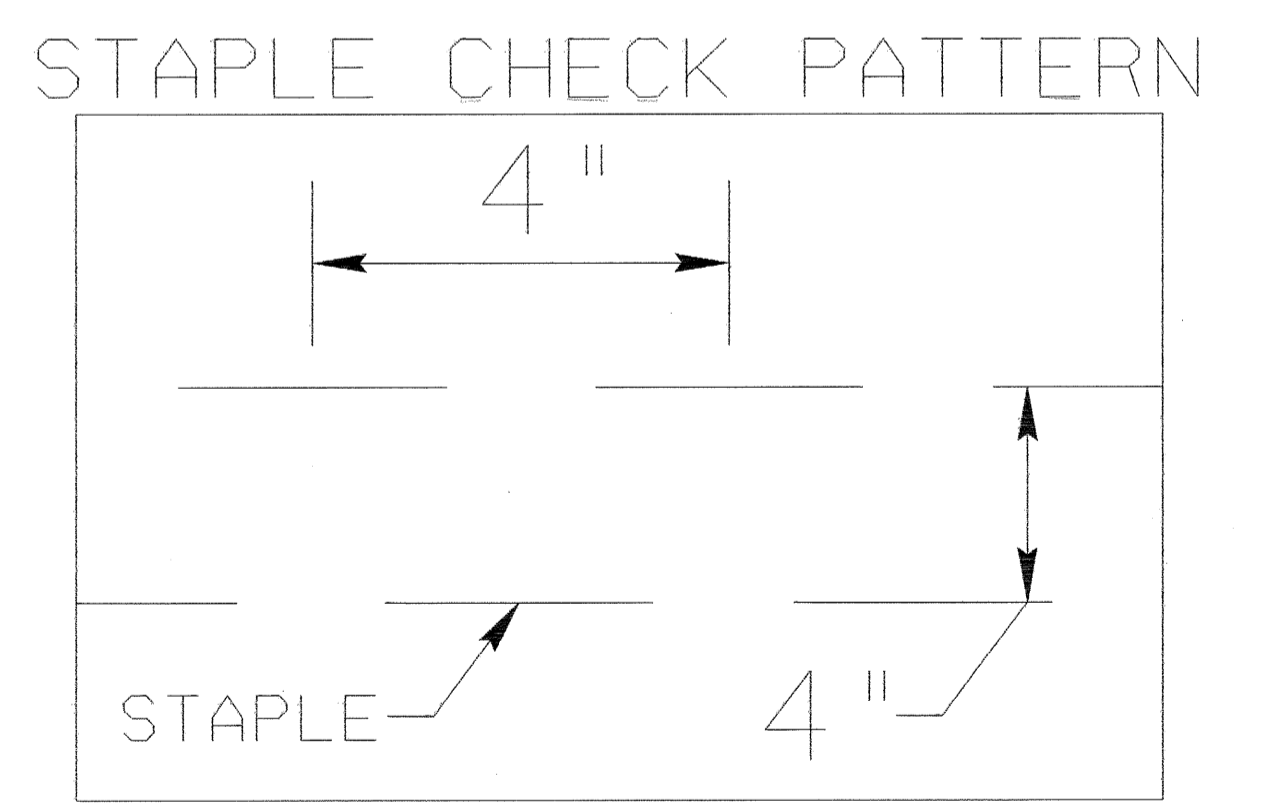


DIAGRAM (C)

**NOTES:**

THIS DETAIL APPLIES TO STRAW, EXCELSIOR, AND PERMANENT SOIL REINFORCEMENT MAT (PSRM) INSTALLATION.  
 STAPLES SHALL BE NO. 11 GAUGE STEEL WIRE FORMED INTO A "U" SHAPE WITH A MINIMUM THROAT WIDTH OF 1 INCH AND NOT LESS THAN 6 INCHES IN LENGTH.

NOT TO SCALE



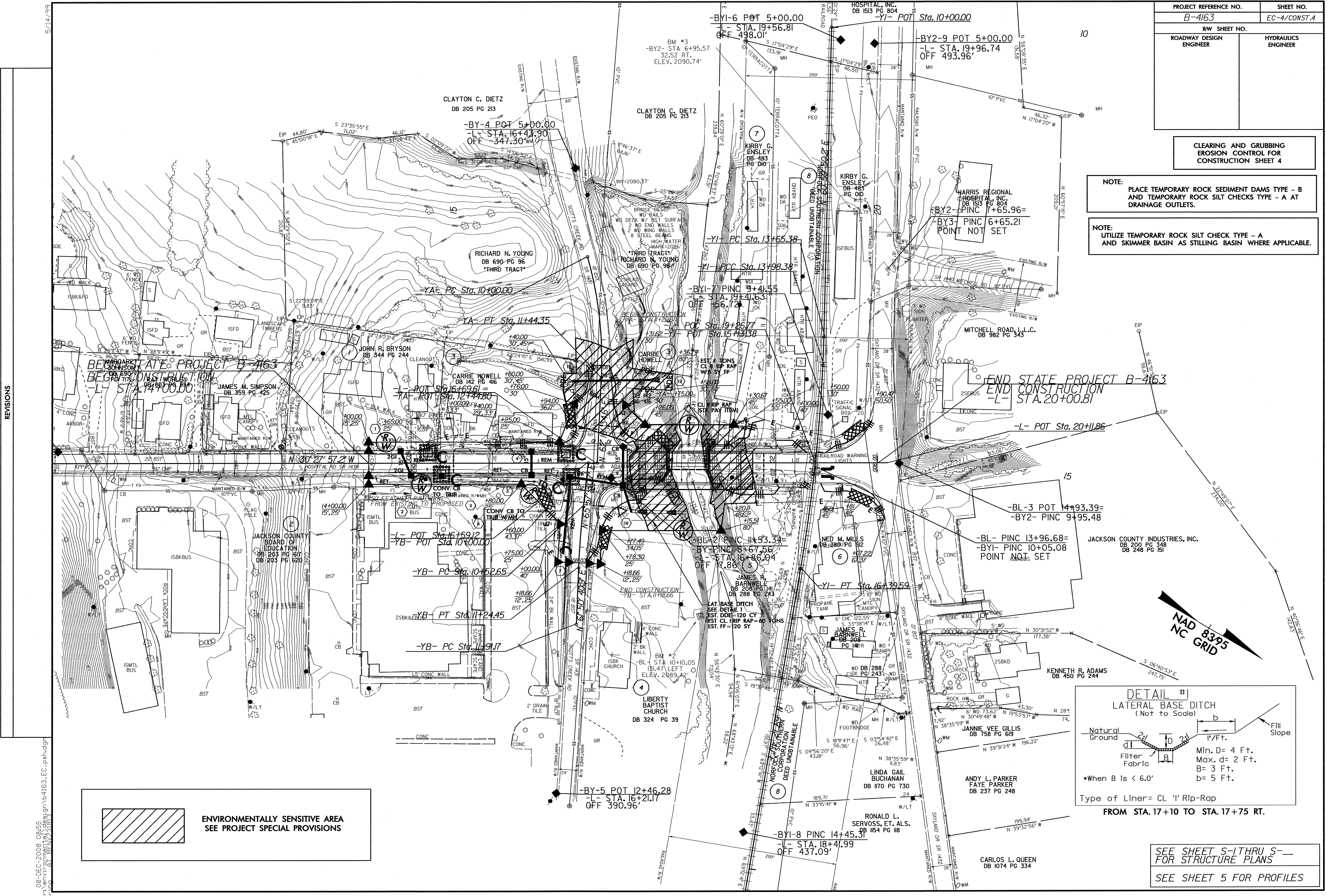


PROJECT REFERENCE NO.	SHEET NO.
B-4163	EC-4/CONST.4
RW SHEET NO.	
ROADWAY DESIGN ENGINEER	HYDRAULICS ENGINEER

CLEARING AND GRUBBING  
EROSION CONTROL FOR  
CONSTRUCTION SHEET 4

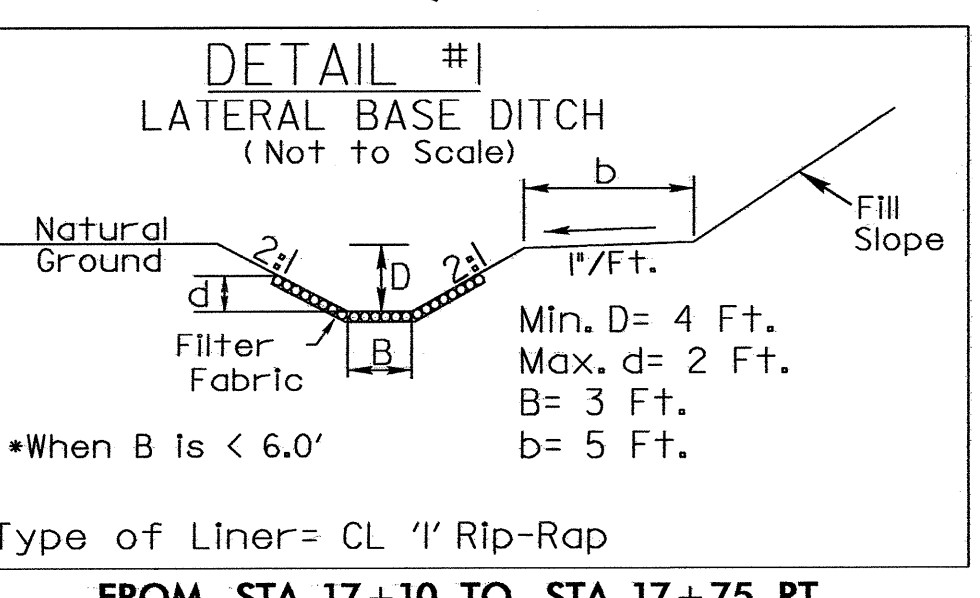
NOTE:  
PLACE TEMPORARY ROCK SEDIMENT DAMS TYPE - B  
AND TEMPORARY ROCK SILT CHECKS TYPE - A AT  
DRAINAGE OUTLETS.

NOTE:  
UTILIZE TEMPORARY ROCK SILT CHECK TYPE - A  
AND SKIMMER BASIN AS STILLING BASIN WHERE APPLICABLE.



END STATE PROJECT B-4163  
END CONSTRUCTION  
-L- STA. 20+00.81

JACKSON COUNTY INDUSTRIES, INC.  
DB 200 PG 348  
DB 248 PG 151



SEE SHEET S-1 THRU S-4  
FOR STRUCTURE PLANS  
SEE SHEET 5 FOR PROFILES

ENVIRONMENTALLY SENSITIVE AREA  
SEE PROJECT SPECIAL PROVISIONS

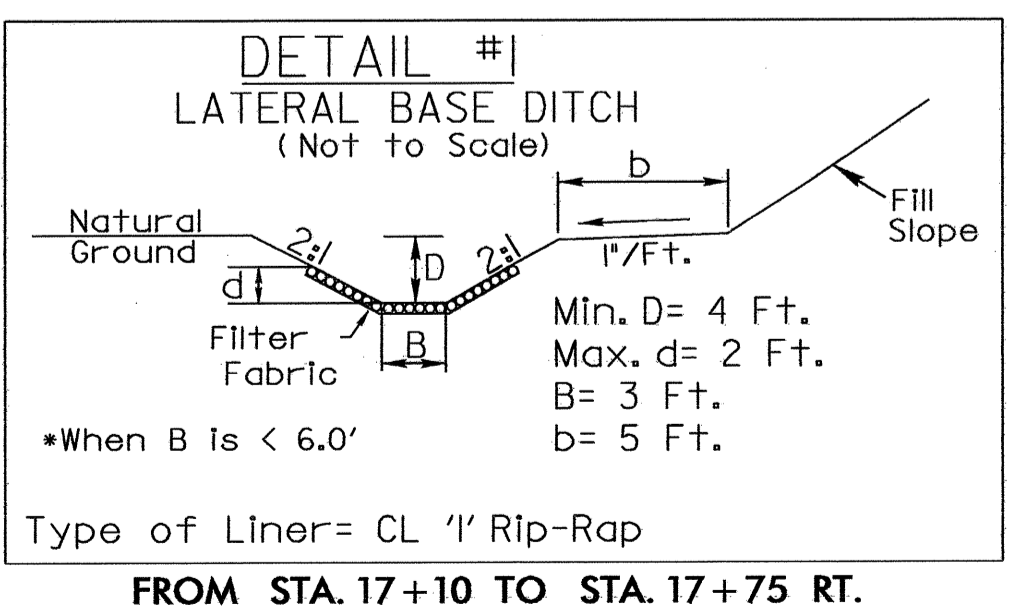
REVISIONS

08-DEC-2008 08:55  
F:\enviro\mgmt\design\4163-EC\_psh.dgn  
AL BENY23113



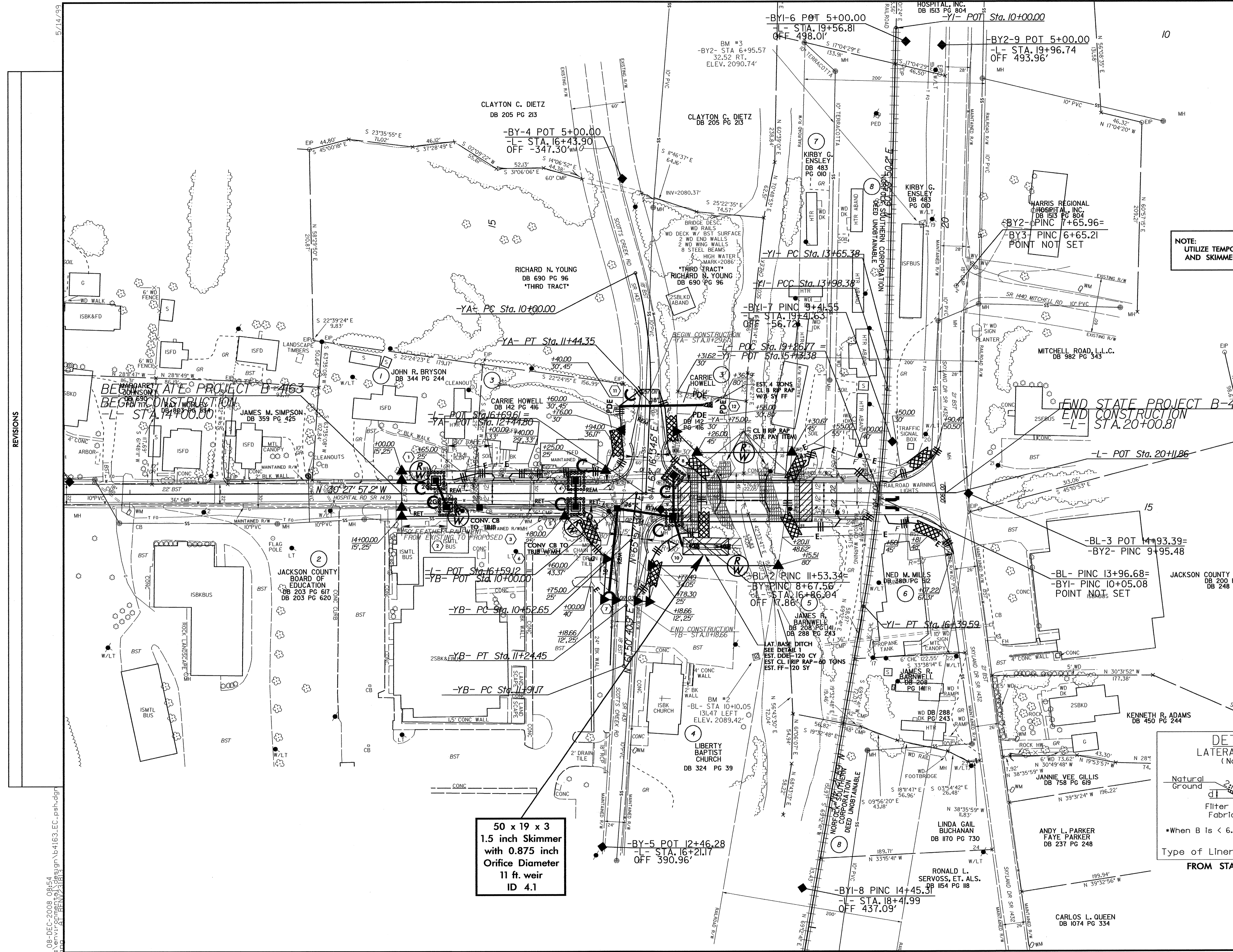
PROJECT REFERENCE NO.	SHEET NO.
B-4163	EC-5/CONST.4
R/W SHEET NO.	HYDRAULICS ENGINEER
ROADWAY DESIGN ENGINEER	

NOTE:  
UTILIZE TEMPORARY ROCK SILT CHECK TYPE - A  
AND SKIMMER BASIN AS STILLING BASIN WHERE APPLICABLE.



50 x 19 x 3  
1.5 inch Skimmer  
with 0.875 inch  
Orifice Diameter  
11 ft. weir  
ID 4.1

SEE SHEET S-1 THRU S-4  
FOR STRUCTURE PLANS  
SEE SHEET 5 FOR PROFILES



REVISIONS

08-DEC-2008 08:54  
r:\environmental\design\b4163.ec\_psh.dgn  
DRAWN BY: HENRY21813