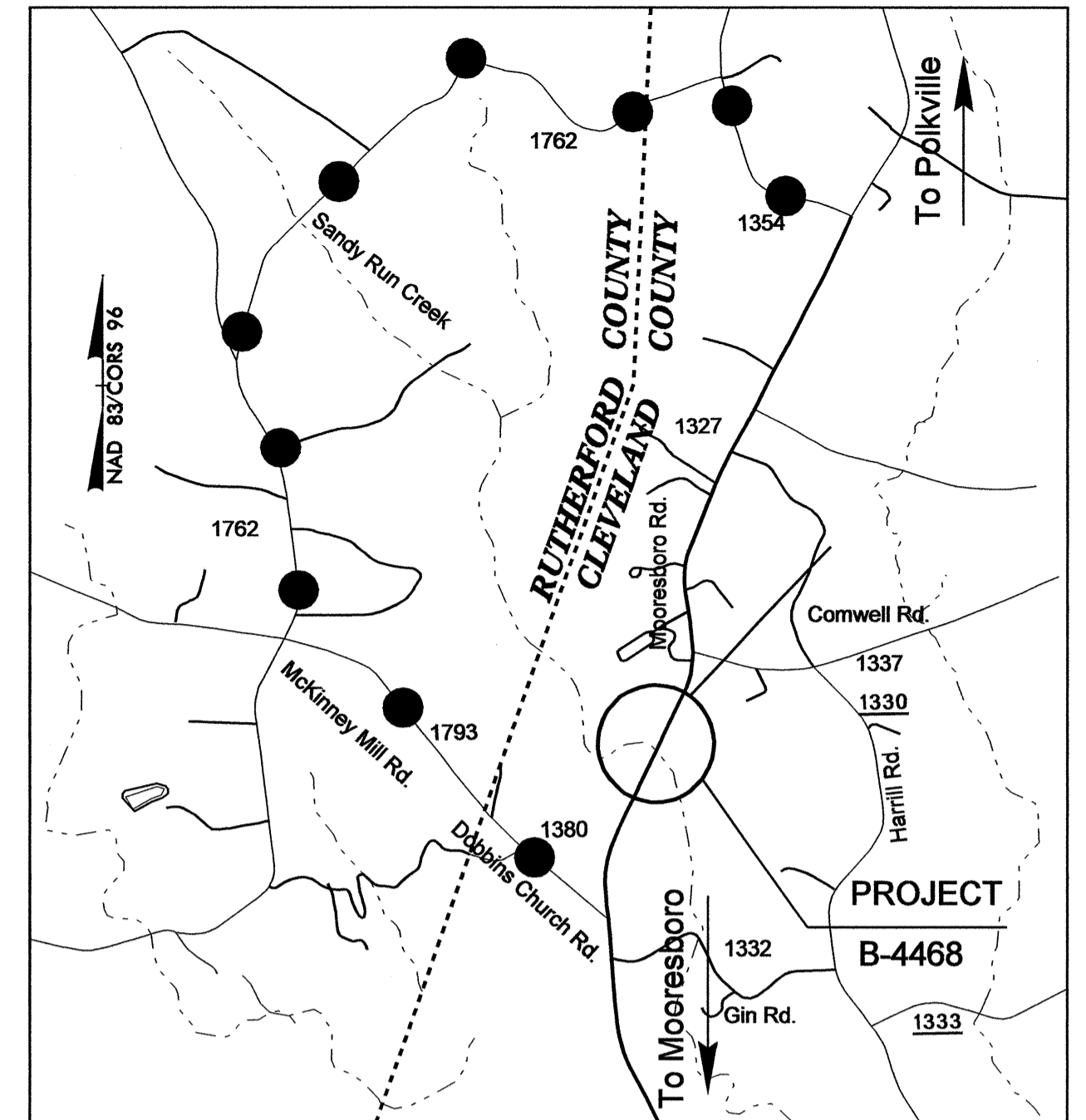


09/08/99

TIP PROJECT: B-4468

T.I.P. NO.	SHEET NO.
B-4468	UC-1



VICINITY MAP

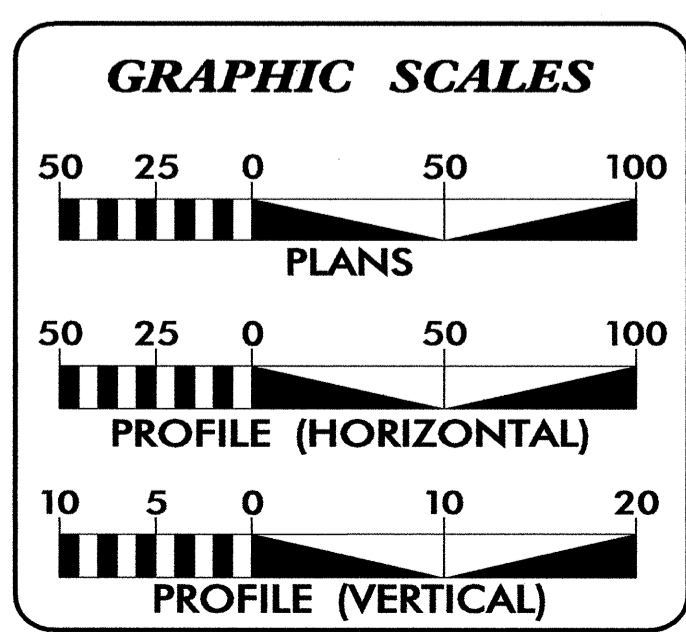
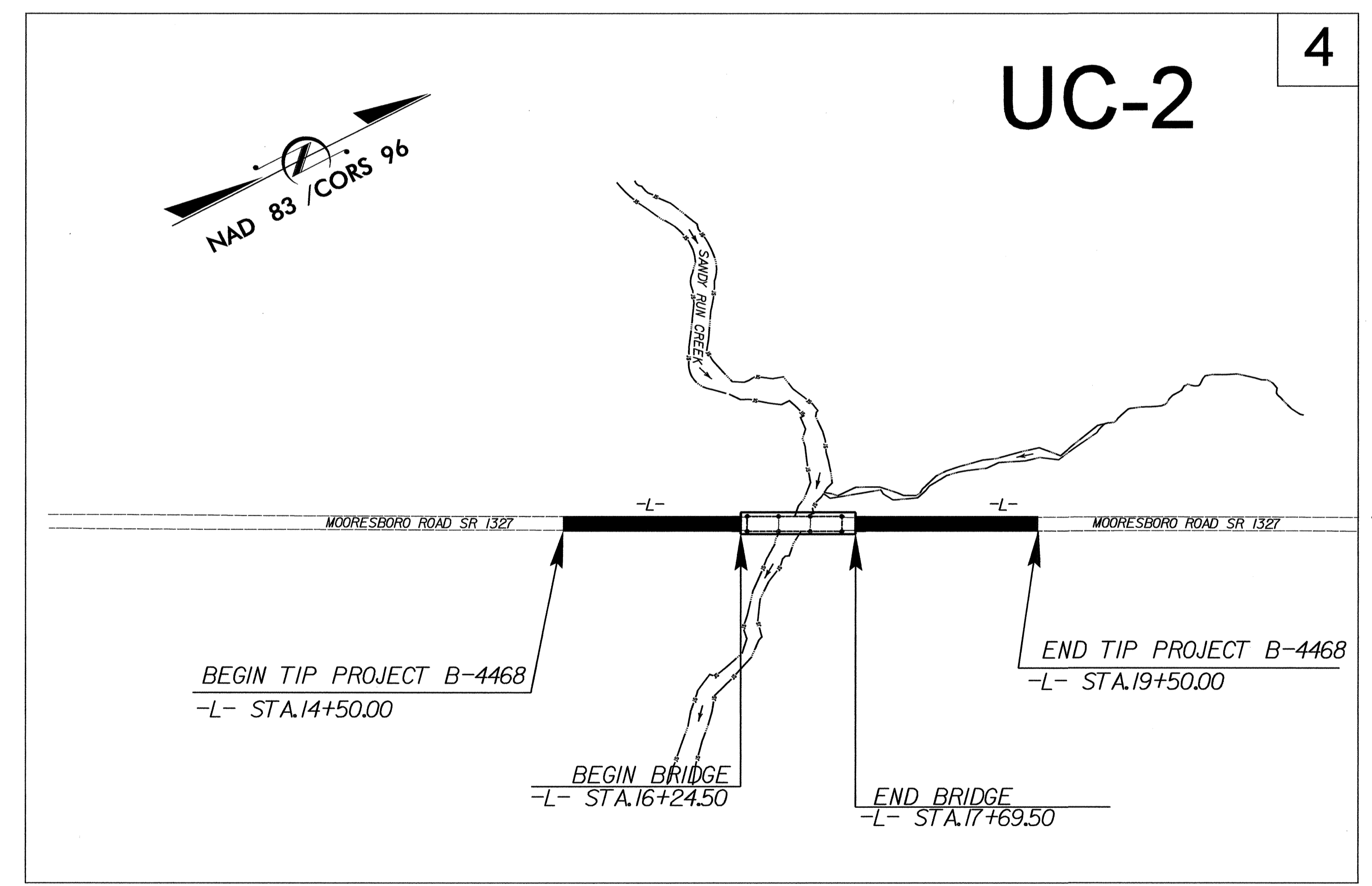


STATE OF NORTH CAROLINA
DIVISION OF HIGHWAYS

UTILITY CONSTRUCTION PLANS CLEVELAND COUNTY

LOCATION: BRIDGE NO. 144 ON SR 1327
(MOORESBO ROAD) OVER SANDY RUN CREEK

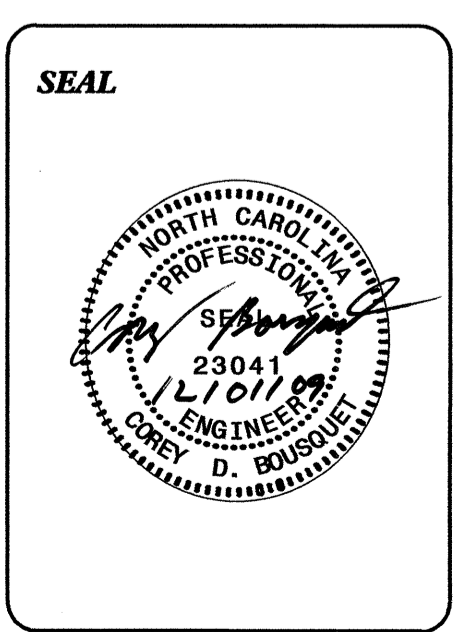
TYPE OF WORK: UTILITY RELOCATION



SHEET NO.	DESCRIPTION
UC-1	TITLE SHEET
UC-2	UTILITY CONSTRUCTION PLAN SHEETS

WATER AND SEWER OWNERS ON PROJECT

(1) WATER - CLEVELAND COUNTY WATER



PREPARED IN THE OFFICE OF:
DIVISION OF HIGHWAYS
UTILITIES ENGINEERING SECTION

1591 MAIL SERVICES CENTER
RALEIGH, NC 27699-1591
PHONE (919) 250-4128
FAX (919) 250-4119

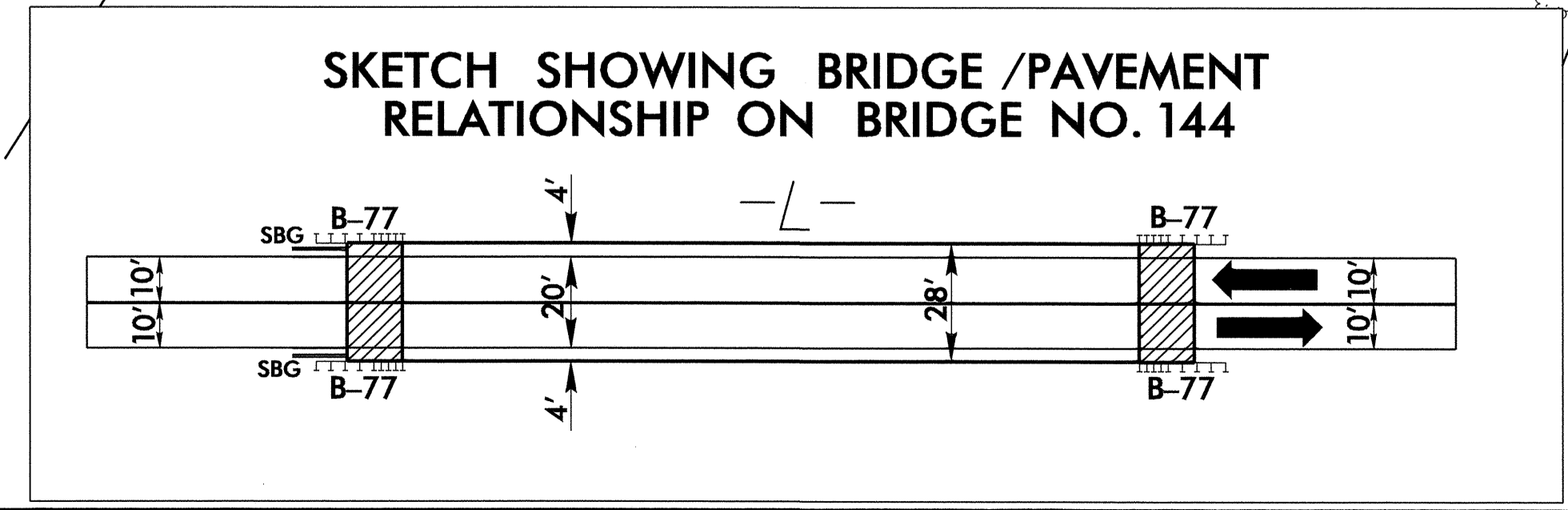
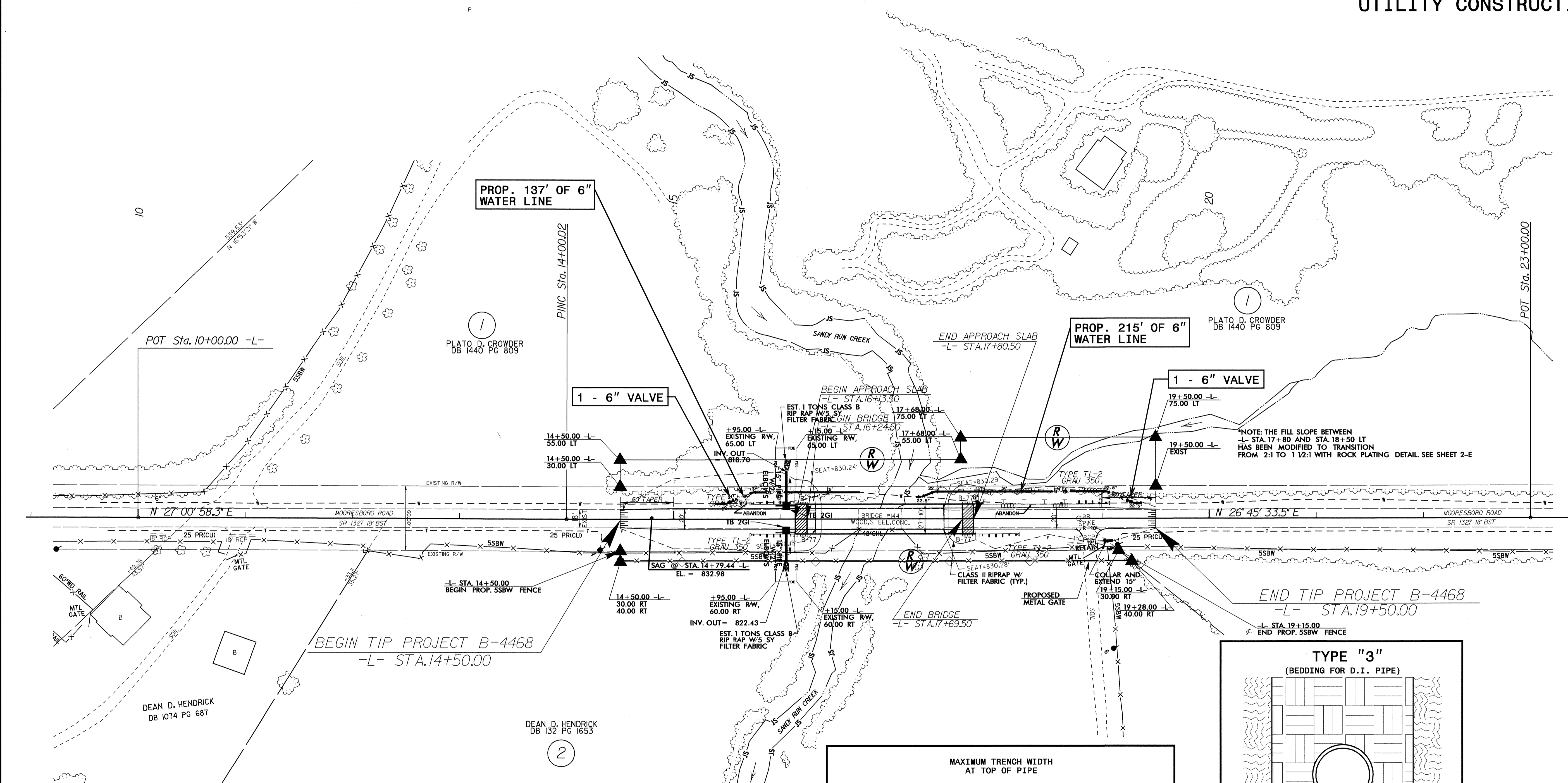
Roger Worthington, P.E. UTILITIES SECTION ENGINEER
Corey Bousquet, P.E. UTILITIES SQUAD LEADER PROJECT ENGINEER
Nabil Hamdan UTILITIES PROJECT DESIGNER

01-DEC-2009 16:47
F:\Utilities\rdy\ut\proj\b4468\ut_rdy_tsh_uc01.dgn
\$\$\$\$\$USERNAME\$\$\$\$\$

UTILITY CONSTRUCTION

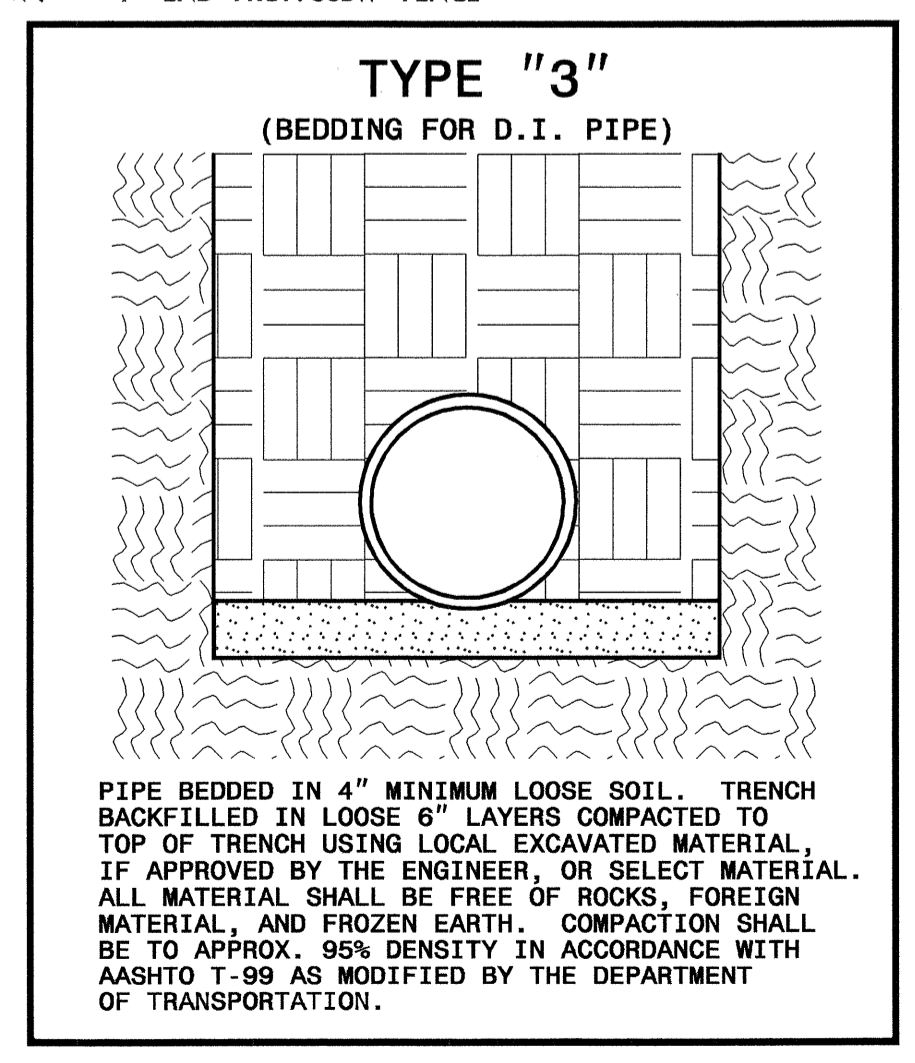
NAD 83 CORRS 96

NOTE: - USE DI RESTRAINED JOINT WATER PIPE
 - MAINTAIN A MINIMUM 2' CLEARANCE BETWEEN BOTTOM OF DRAINAGE PIPE AND TOP OF DI PIPE



MAXIMUM TRENCH WIDTH AT TOP OF PIPE

NOMINAL PIPE SIZE (INCHES)	TRENCH WIDTH (INCHES)	NOMINAL PIPE SIZE (INCHES)	TRENCH WIDTH (INCHES)
4	28	20	44
6	30	24	48
8	32	30	54
10	34	36	60
12	36	42	66
14	38	48	72
16	40	54	78
18	42		

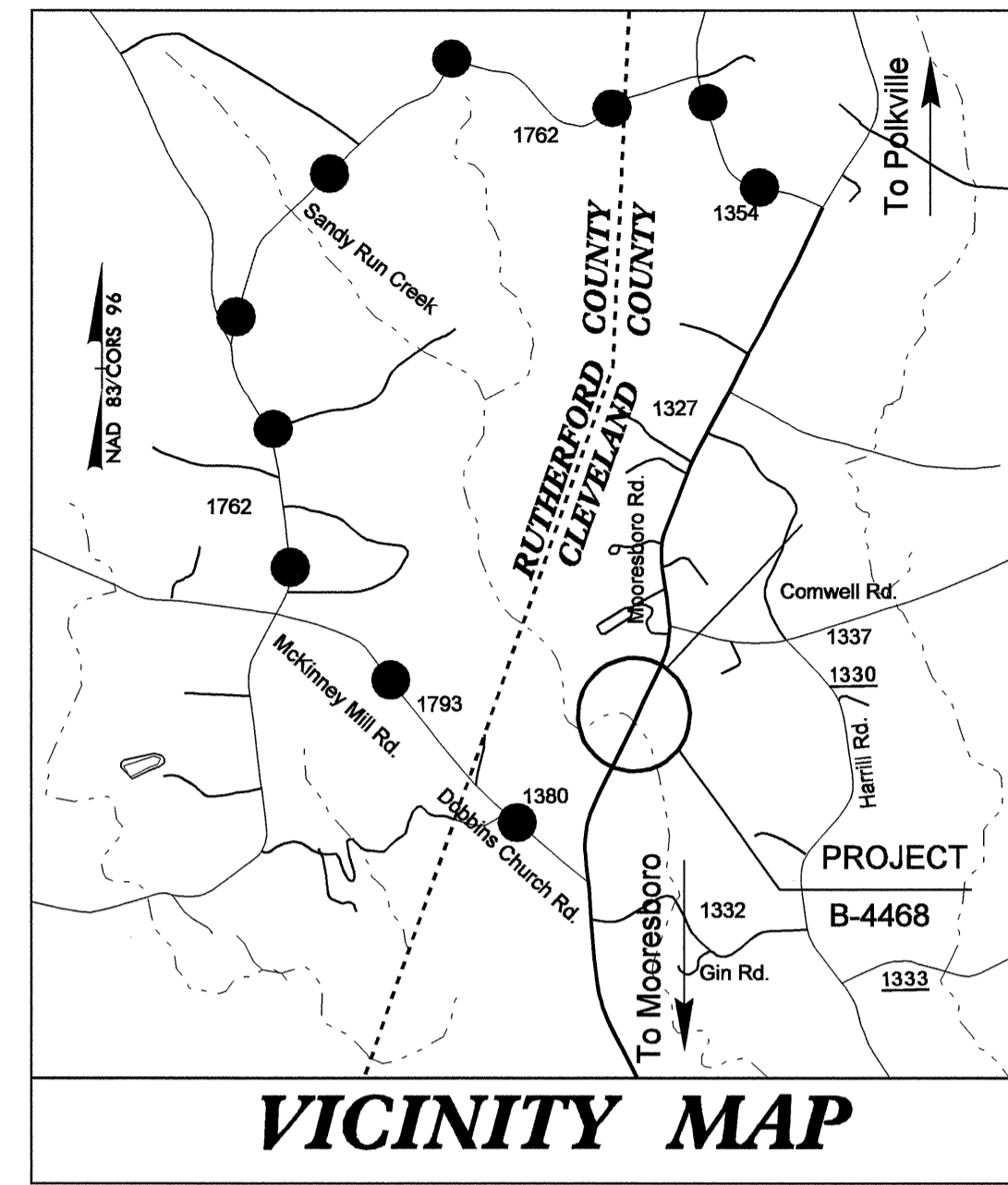
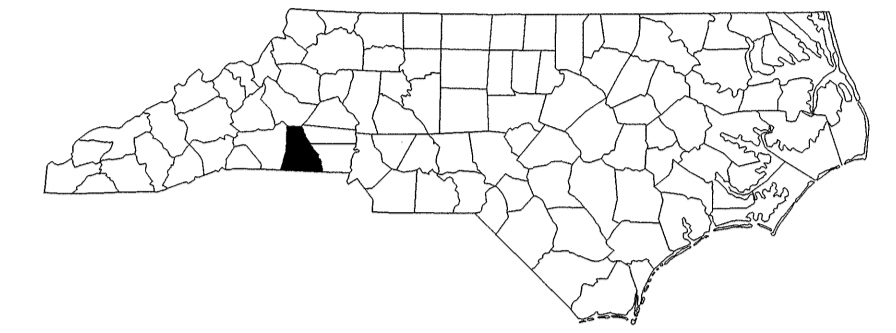


5/14/99
 27-JAN-2010 09:33
 R:\Utilities\Highway\B4468\ut_rdy04_ue02.dgn

T.I.P. NO.	SHEET NO.
B-4468	UO-1

STATE OF NORTH CAROLINA
DIVISION OF HIGHWAYS

**UTILITIES BY OTHERS PLANS
CLEVELAND COUNTY**



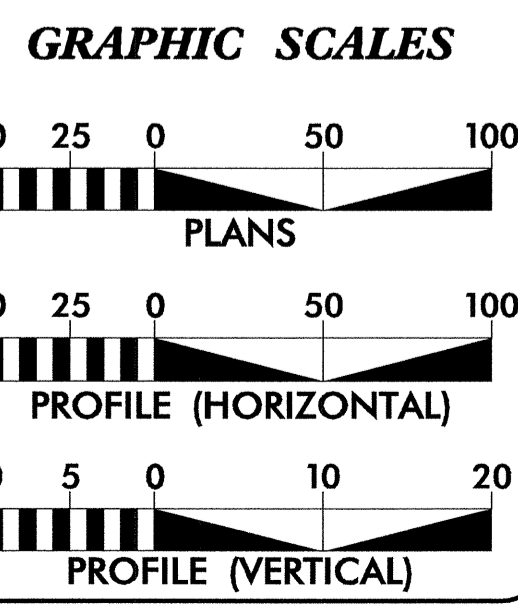
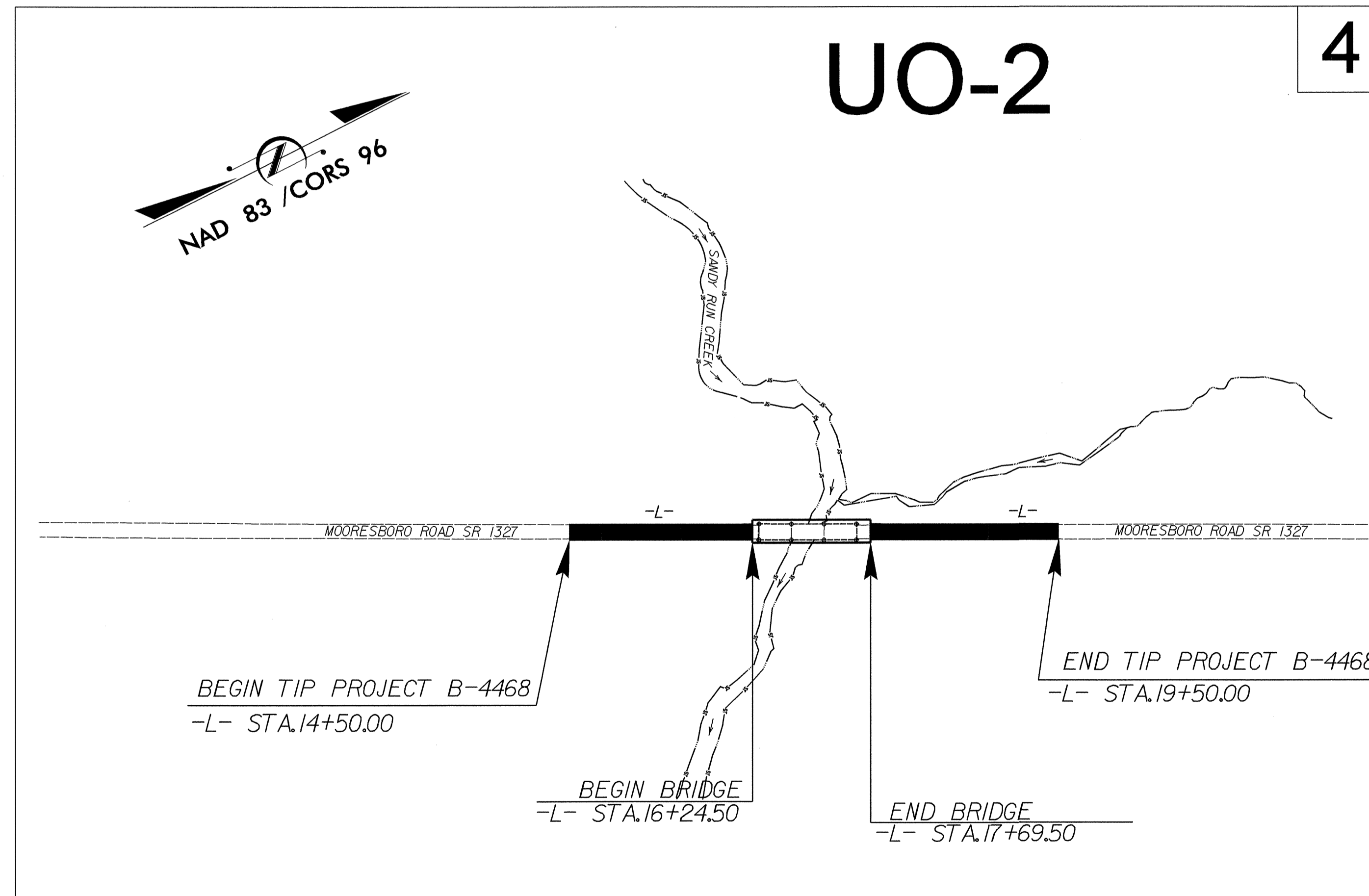
VICINITY MAP

OFFSITE DETOUR ●—●—●

**LOCATION: BRIDGE NO. 144 ON SR 1327
(MOORESBORO ROAD) OVER SANDY RUN CREEK**

TYPE OF WORK: UTILITIES RELOCATION

TIP PROJECT: B-4468




INDEX OF SHEETS

SHEET NO.	DESCRIPTION
UO-1	TITLE SHEET
UO-2	UTILITY BY OTHERS PLAN SHEET

UTILITY OWNERS ON PROJECT

- (1) Duke Power - Power
- (2) AT&T - Telephone



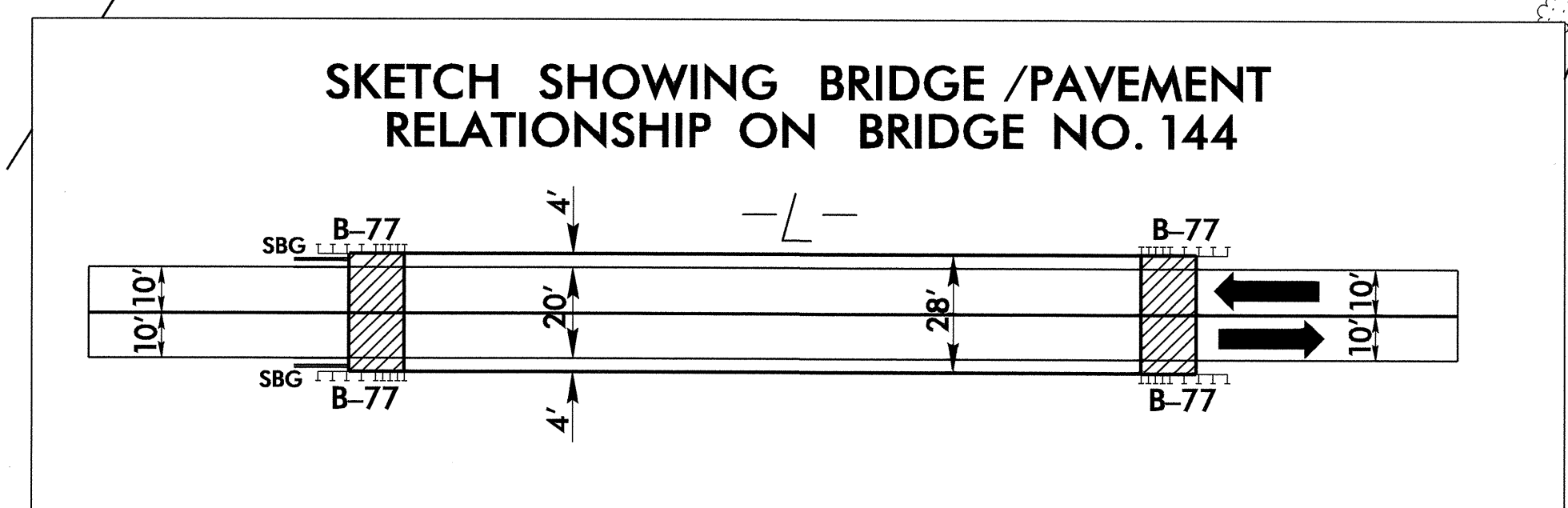
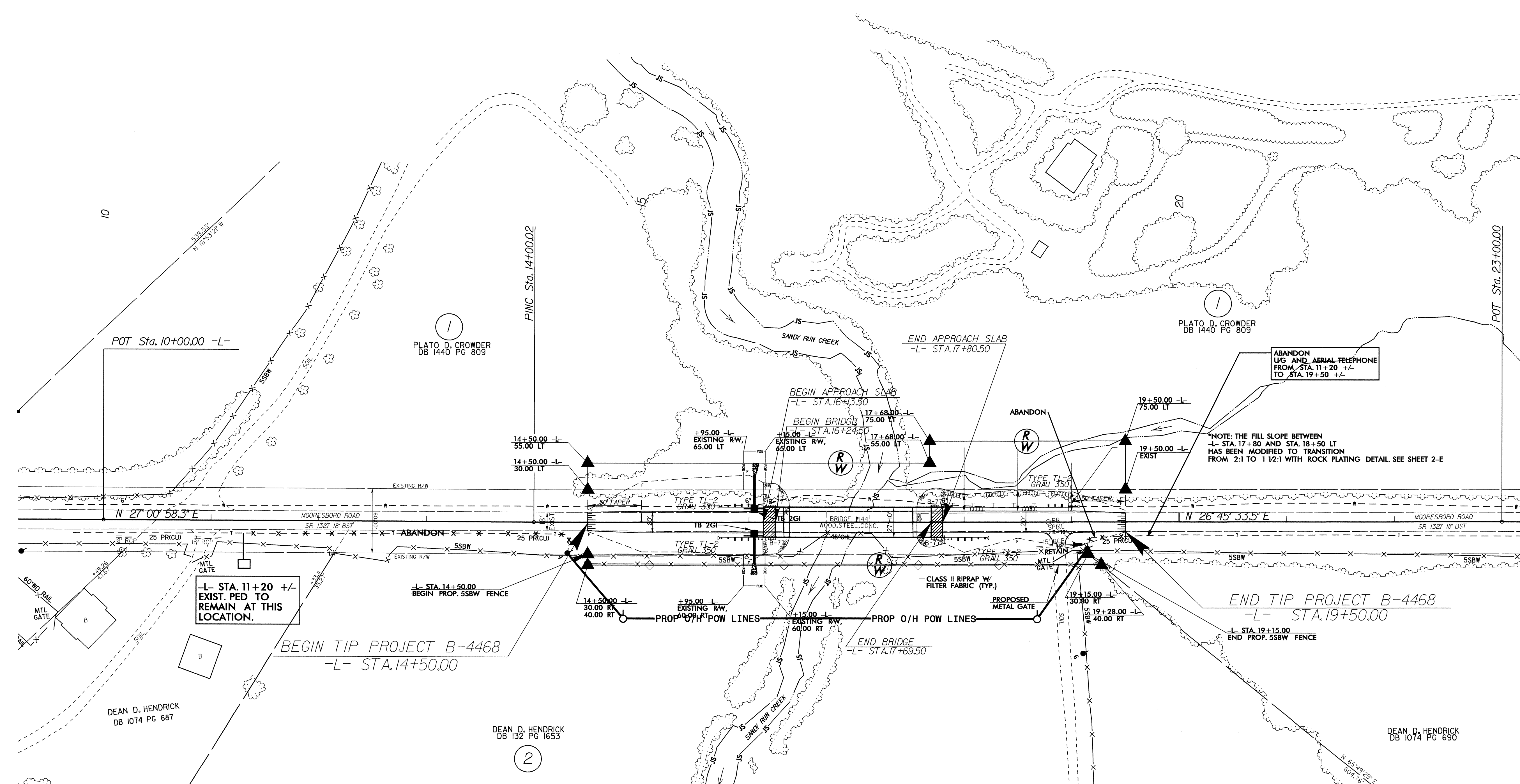
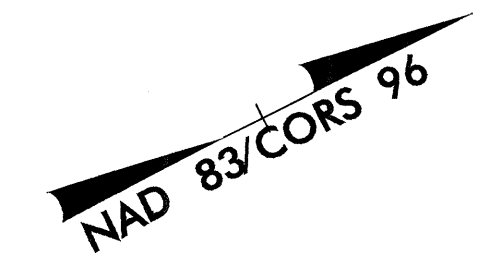
PREPARED IN THE OFFICE OF:
**DIVISION OF HIGHWAYS
UTILITIES ENGINEERING
SECTION**

1591 MAIL SERVICES CENTER
RALEIGH, NC 27699-1591
PHONE (919) 250-4128
FAX (919) 250-4119

Roger Worthington, P.E. UTILITIES SECTION ENGINEER
Corey Bousquet, P.E. UTILITIES SQUAD LEADER PROJECT ENGINEER
Nabil Hamdan UTILITIES PROJECT DESIGNER

UTILITIES BY OTHERS

NOTE:
ALL PROPOSED UTILITY WORK
SHOWN ON THIS SHEET WILL
BE DONE BY OTHERS



5/14/09
 27-JAN-2000 09:34
 R:\Utilities\Projects\B4468-rdy_rdy04_UO2.dgn
 \$\$\$\$SYTIME\$\$\$\$