

TIP PROJECT: B-3404

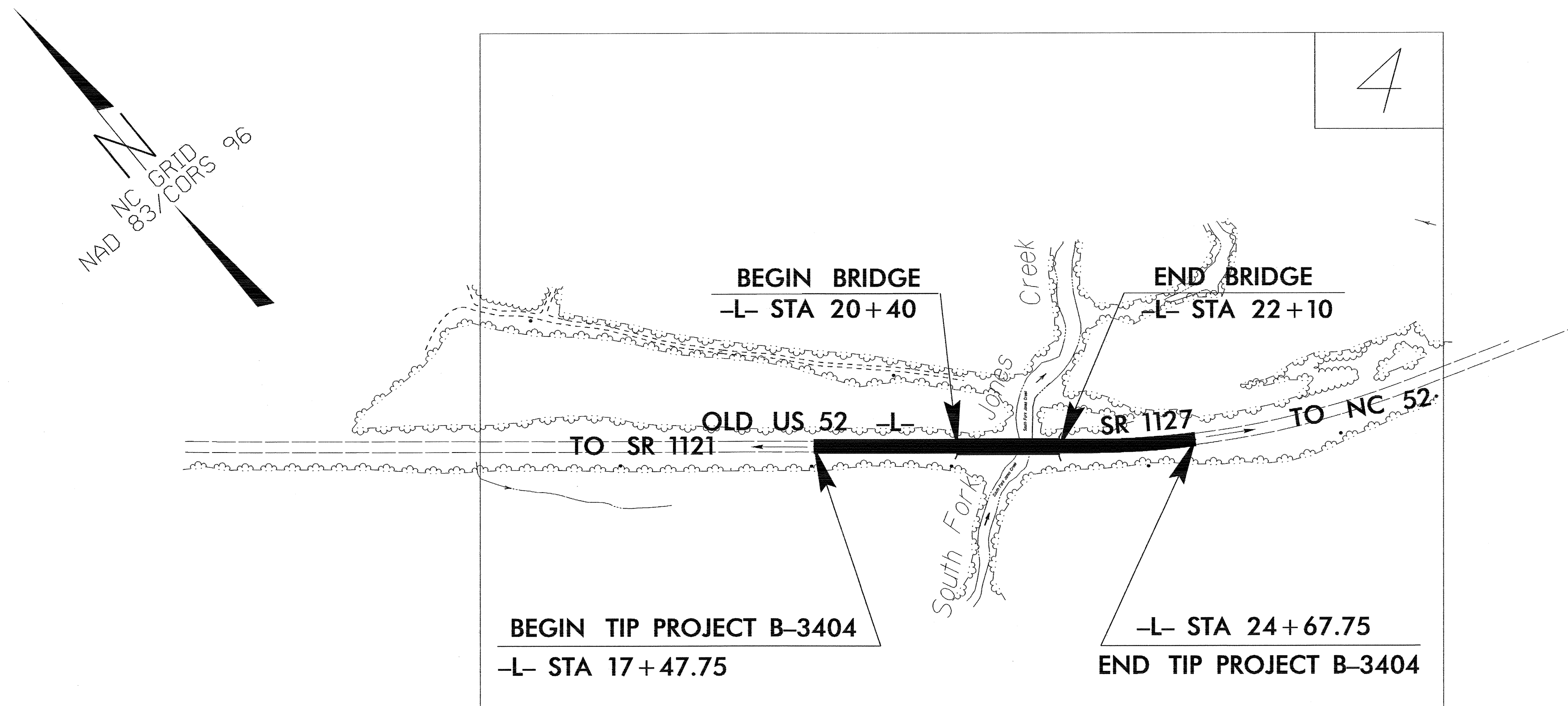
STATE OF NORTH CAROLINA
DIVISION OF HIGHWAYS

PLAN FOR PROPOSED
HIGHWAY EROSION CONTROL

ANSON COUNTY

LOCATION: BRIDGE No. 314 OVER SOUTH FORK JONES CREEK ON SR 1127

TYPE OF WORK: GRADING, DRAINAGE, PAVING AND STRUCTURE



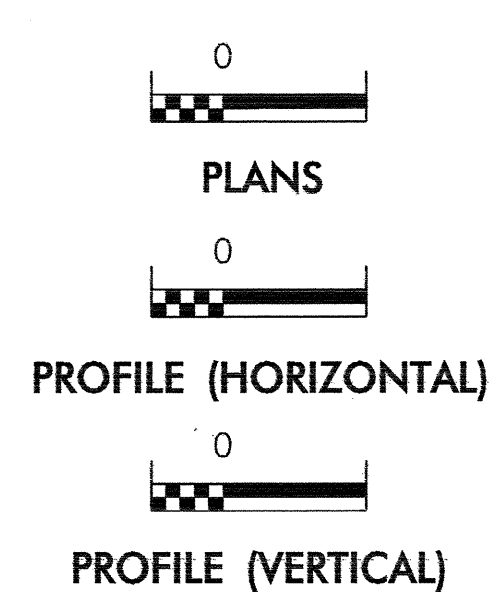
STATE	STATE PROJECT REFERENCE NO.	SHEET NO.	TOTAL SHEETS
N.C.	B-3404	EC-1	
STATE PROJ. NO.	F.A. PROJ. NO.	DESCRIPTION	

EROSION AND SEDIMENT CONTROL MEASURES

Std. #	Description	Symbol
1630.03	Temporary Silt Ditch	
1630.05	Temporary Diversion	
1605.01	Temporary Silt Fence	
1606.01	Special Sediment Control Fence	
1622.01	Temporary Berms and Slope Drains	
	Silt Basin Type B	
1633.01	Temporary Rock Silt Check Type-A	
	Temporary Rock Silt Check Type-A with Matting and Polyacrylamide (PAM)	
	Temporary Rock Silt Check Type-B	
	Wattle	
1634.01	Temporary Rock Sediment Dam Type-A	
1634.02	Temporary Rock Sediment Dam Type-B	
1635.01	Rock Pipe Inlet Sediment Trap Type-A	
1635.02	Rock Pipe Inlet Sediment Trap Type-B	
1630.04	Stilling Basin	
1630.06	Special Stilling Basin	
	Rock Inlet Sediment Trap:	
1632.01	Type A	
1632.02	Type B	
1632.03	Type C	
	Skimmer Basin	
	Tiered Skimmer Basin	
	Infiltration Basin	

**THIS PROJECT CONTAINS
EROSION CONTROL PLANS
FOR CLEARING AND
GRUBBING PHASE OF
CONSTRUCTION.**

GRAPHIC SCALE



ROADSIDE ENVIRONMENTAL UNIT
DIVISION OF HIGHWAYS
STATE OF NORTH CAROLINA

Prepared in the Office of:
ROADSIDE ENVIRONMENTAL UNIT
1 South Wilmington St.
Raleigh, NC 27611
2006 STANDARD SPECIFICATIONS

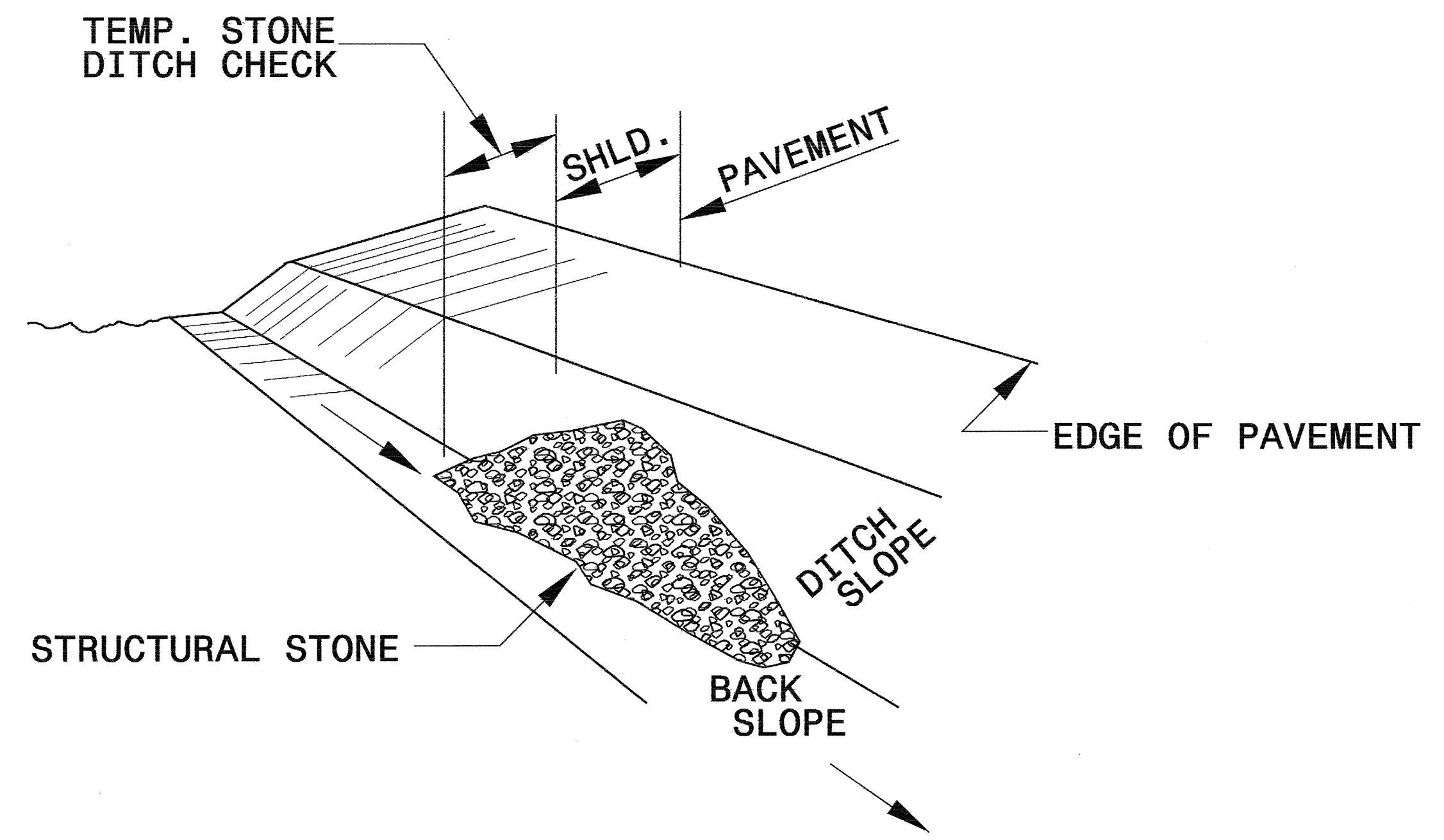
Roadway Standard Drawings
The following roadway english standards as appear in "Roadway Standard Drawings"- Roadway Design Unit - N. C. Department of Transportation - Raleigh, N. C., dated July 18, 2006 and the latest revision thereto are applicable to this project and by reference hereby are considered a part of these plans.

- | | |
|--|--|
| 1605.01 Temporary Silt Fence | 1630.06 Special Stilling Basin |
| 1607.01 Gravel Construction Entrance | 1632.03 Rock Inlet Sediment Trap Type C |
| 1622.01 Temporary Berms and Slope Drains | 1633.01 Temporary Rock Silt Check Type A |
| 1630.03 Temporary Silt Ditch | |

C:\N\2006\1166
 R:\env\env\proj\B3404\B3404.ec.tsh.dgn
 nshan RT:REN2312

PROJECT REFERENCE NO. B-3404	SHEET NO. EC-2
RW SHEET NO.	
ROADWAY DESIGN ENGINEER	HYDRAULICS ENGINEER

TEMPORARY ROCK SILT CHECK TYPE 'B' DETAIL

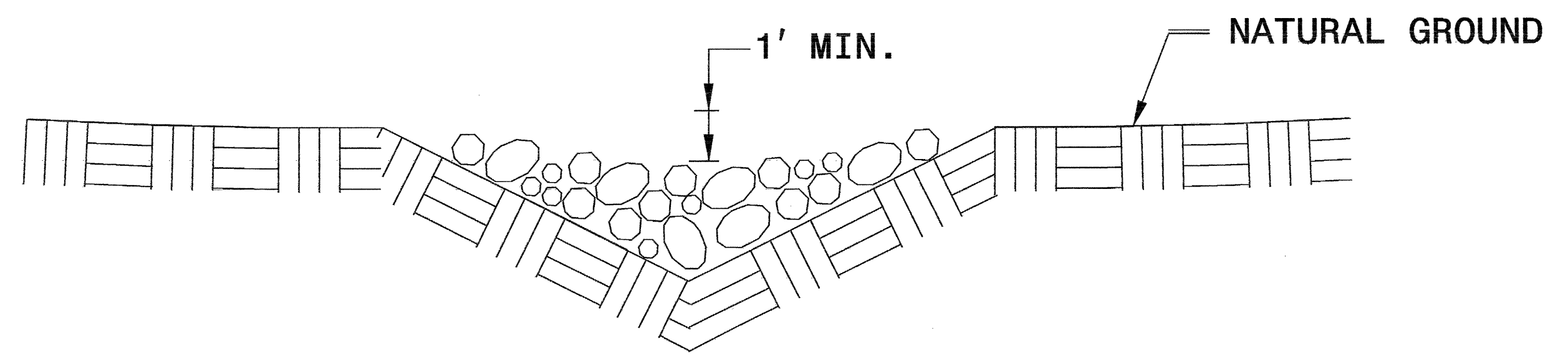


ISOMETRIC VIEW

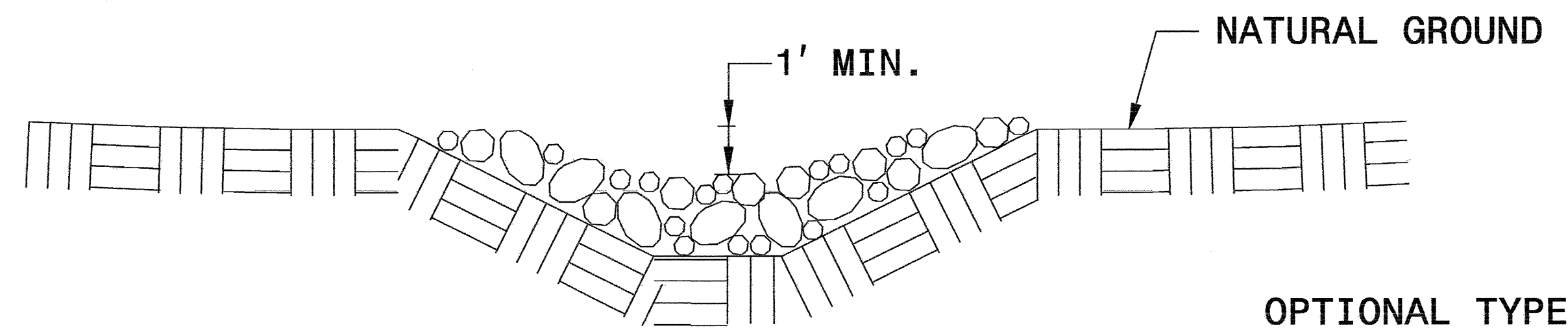
NOTES:

USE CLASS 'B' EROSION CONTROL STONE FOR STRUCTURAL STONE.

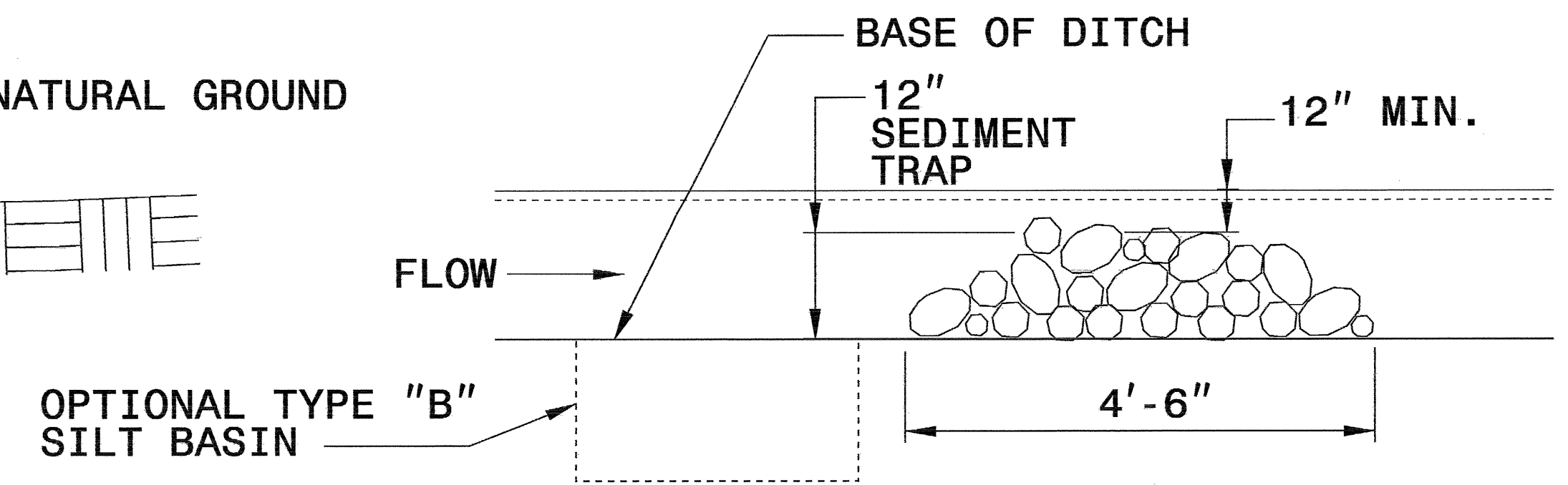
THE ENGINEER MAY DIRECT THE OPTION OF CLASS "A" STONE FOR SITES HAVING LESS THAN ONE (1) ACRE DRAINAGE AREA AND A DITCH GRADE LESS THAN 3%.



CROSS SECTION VEE DITCH



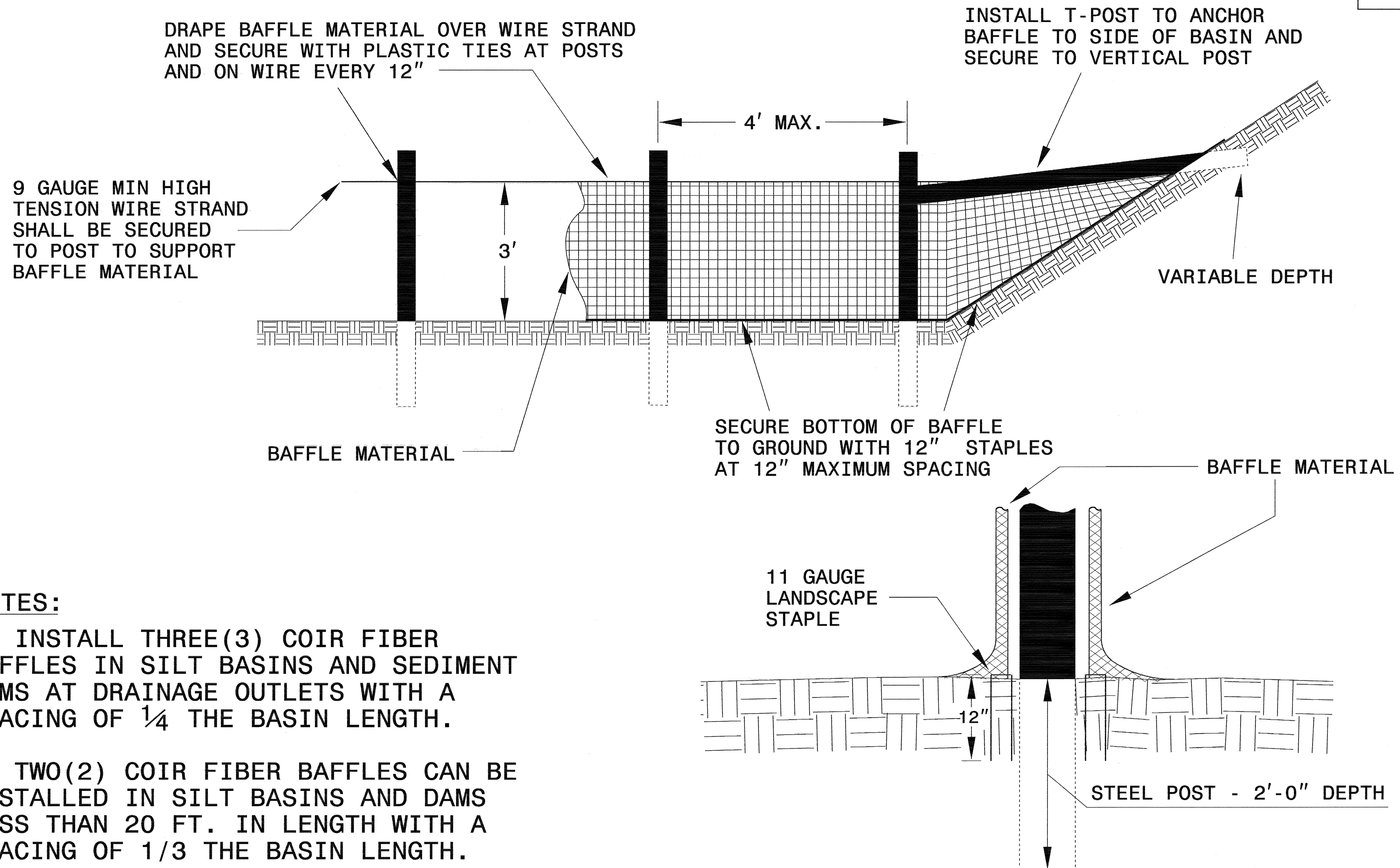
CROSS SECTION TRAPEZOIDAL DITCH



ELEVATION VIEW

PROJECT REFERENCE NO. B-3404	SHEET NO. EC-2A
RW SHEET NO.	
ROADWAY DESIGN ENGINEER	HYDRAULICS ENGINEER

COIR FIBER BAFFLE DETAIL



NOTES:

1. INSTALL THREE(3) COIR FIBER BAFFLES IN SILT BASINS AND SEDIMENT DAMS AT DRAINAGE OUTLETS WITH A SPACING OF $\frac{1}{4}$ THE BASIN LENGTH.

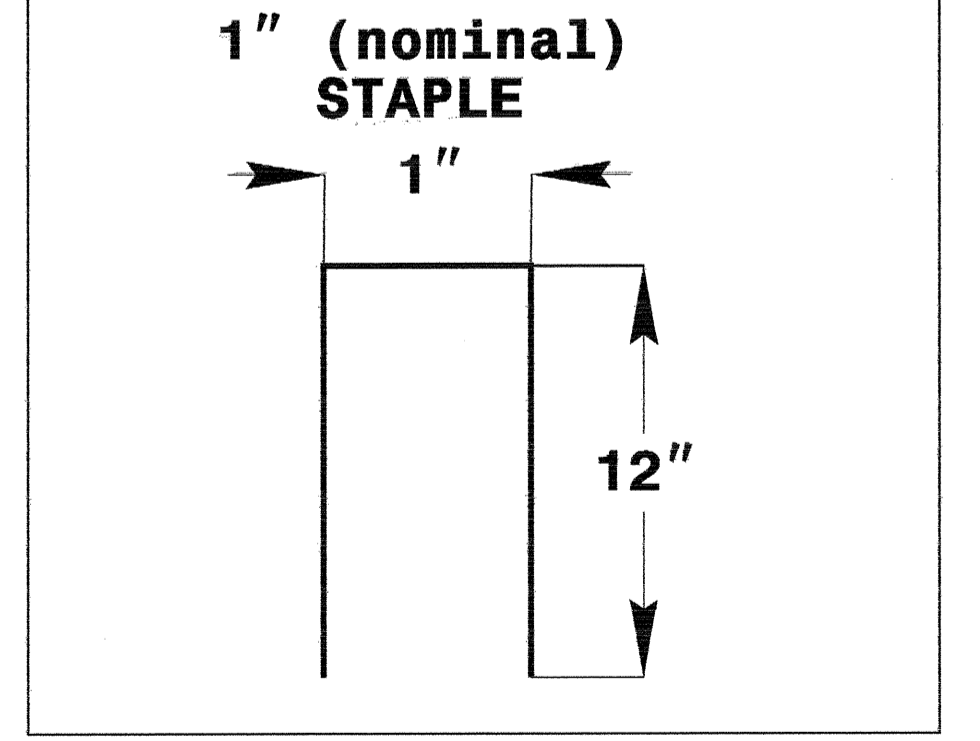
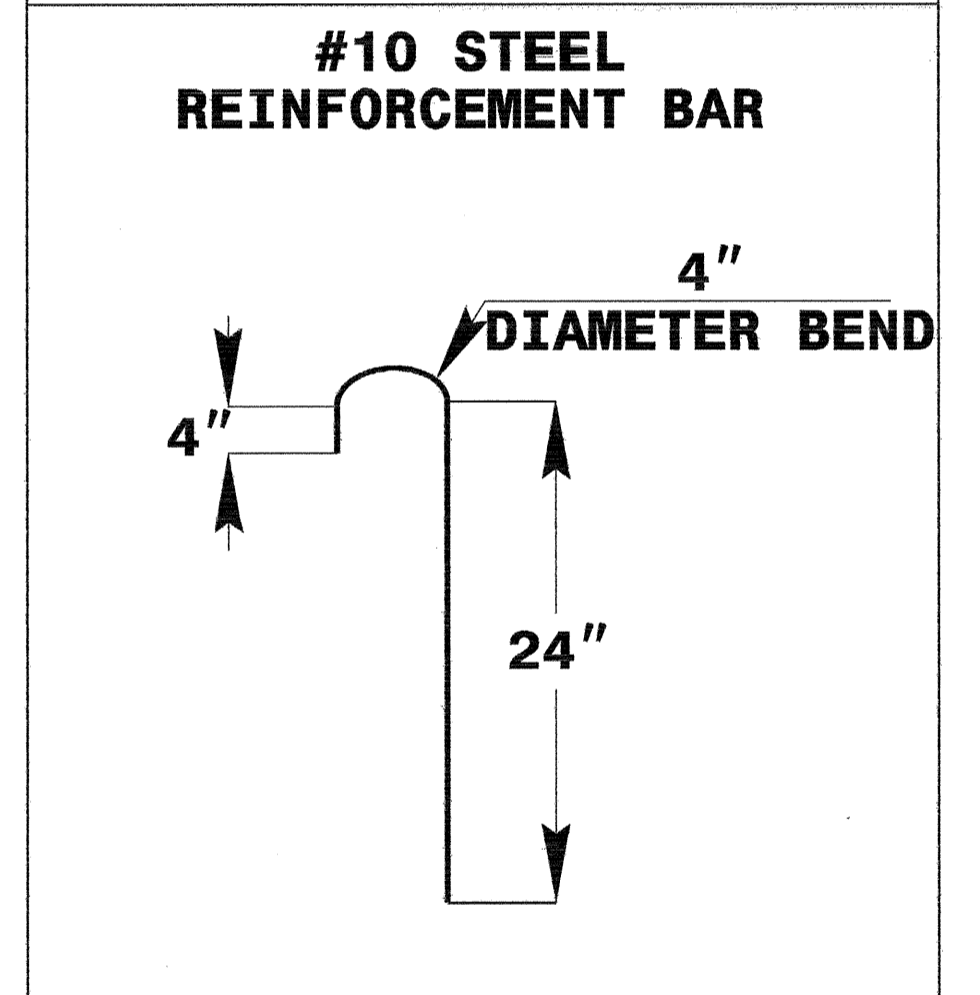
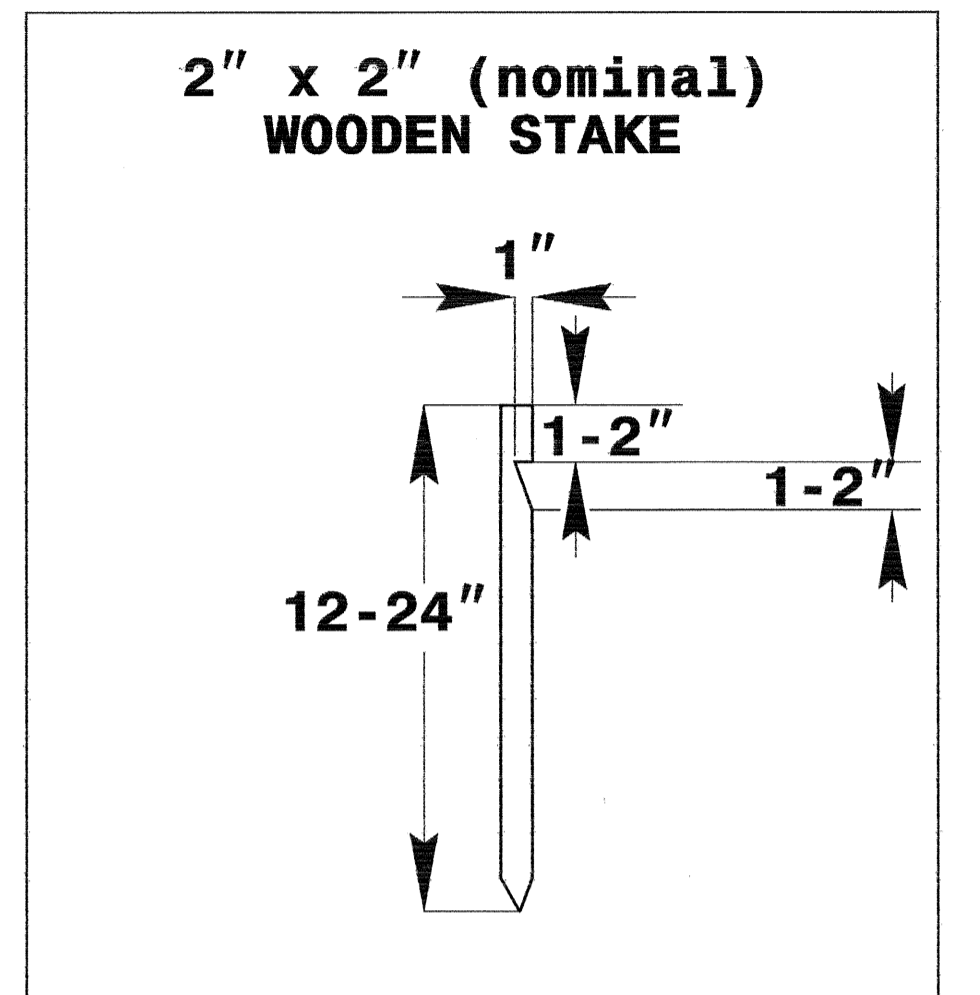
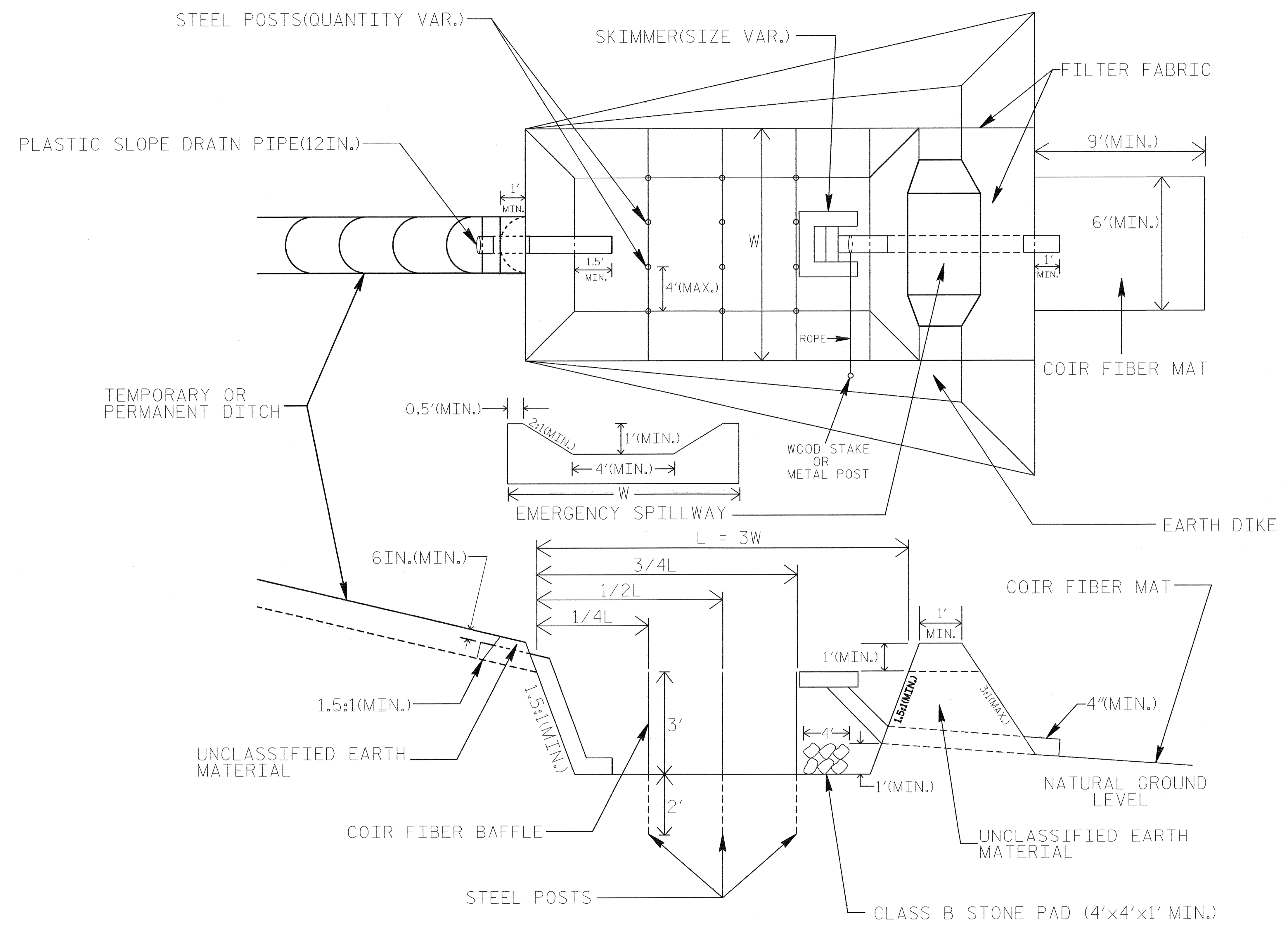
2. TWO(2) COIR FIBER BAFFLES CAN BE INSTALLED IN SILT BASINS AND DAMS LESS THAN 20 FT. IN LENGTH WITH A SPACING OF $\frac{1}{3}$ THE BASIN LENGTH.

3. TOP HEIGHT OF COIR FIBER BAFFLES SHALL NOT BE BELOW BASE OF EMERGENCY SPILLWAY ELEVATION.

BAFFLE MATERIAL SHALL BE SECURED TO THE BOTTOM AND SIDES OF BASIN USING 12" LANDSCAPE STAPLES

SKIMMER BASIN WITH BAFFLES DETAIL

PROJECT REFERENCE NO. B-3404	SHEET NO. EC-2B
RW SHEET NO.	
ROADWAY DESIGN ENGINEER	HYDRAULICS ENGINEER



COIR FIBER MAT ANCHOR OPTIONS

NOTES

1. SEED AND PLACE MATTING FOR EROSION CONTROL ON INTERIOR SIDESLOPES.
2. LIMIT EARTH DIKE HEIGHT TO 5 FT.
3. THE MINIMUM BASIN WIDTH SHALL BE 9 FT.
4. DETERMINE EMERGENCY SPILLWAY LENGTH (FT.) USING $Q/0.8$, WHERE Q IS FLOW RATE (CFS) INTO BASIN.

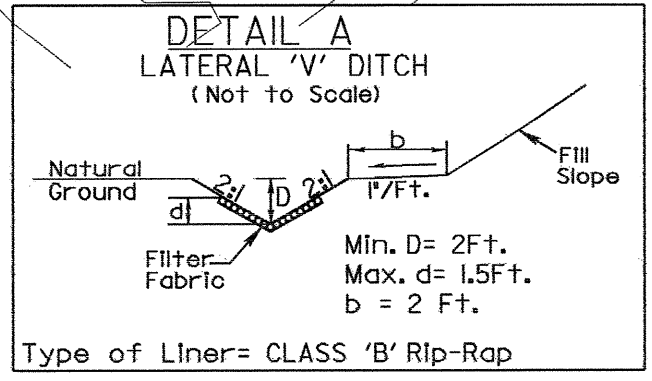
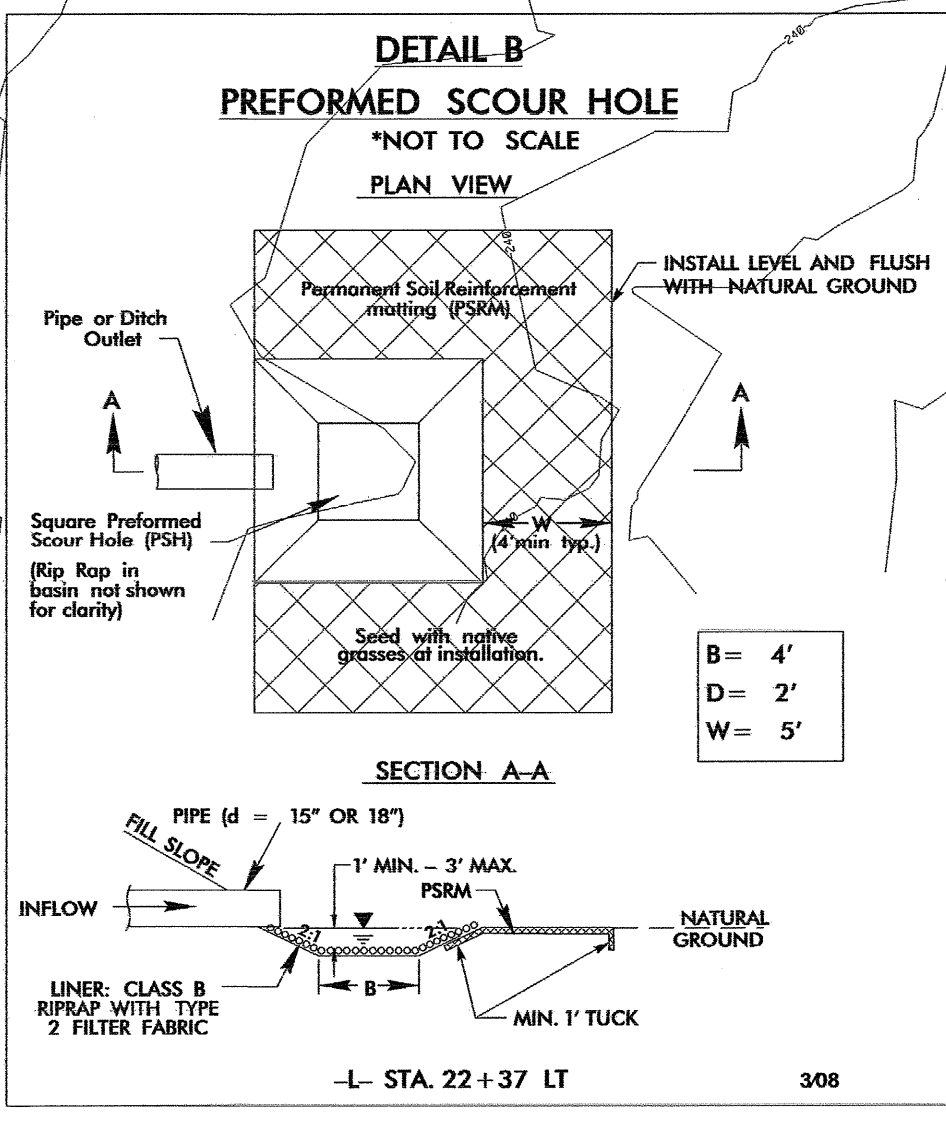
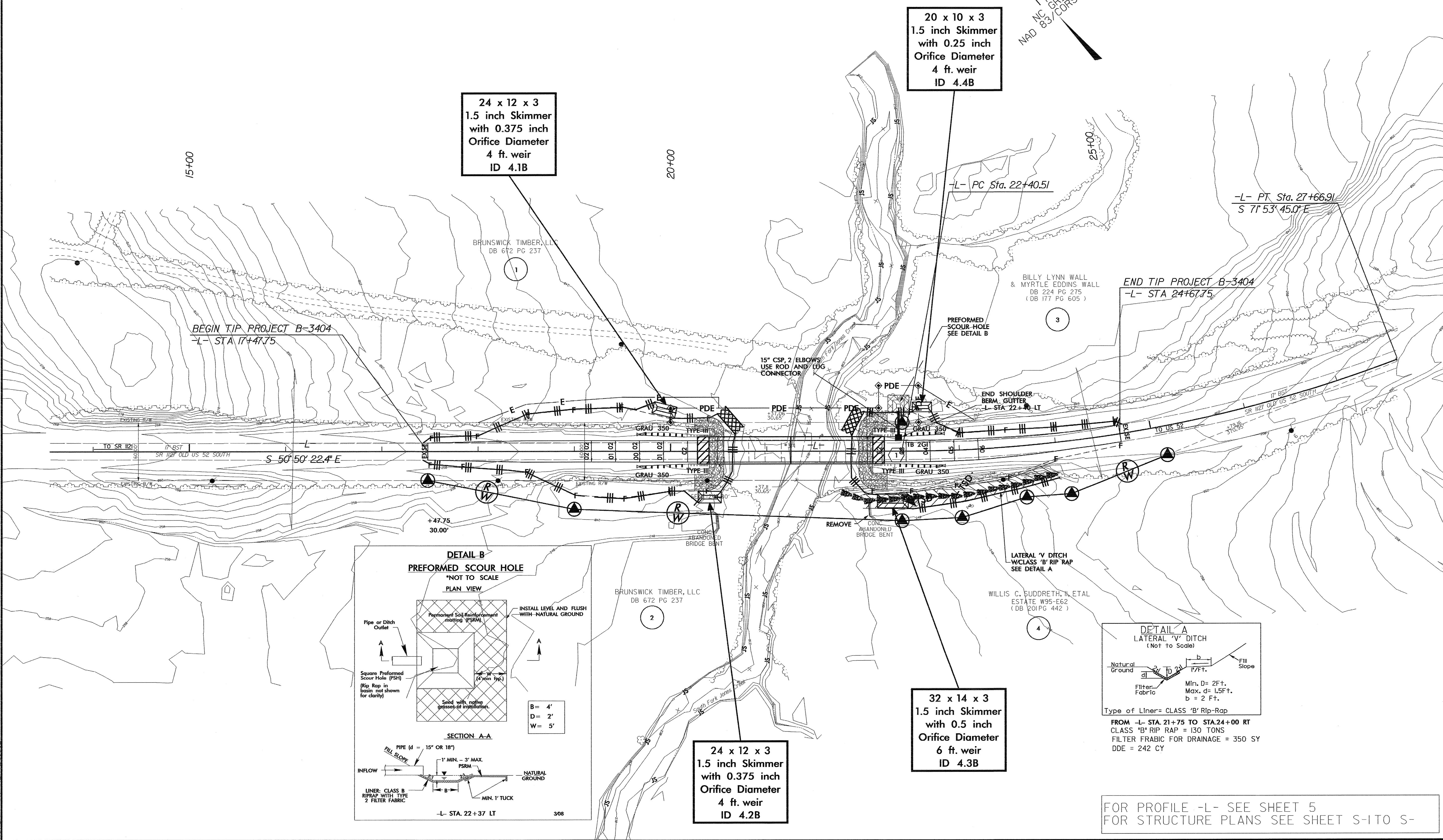
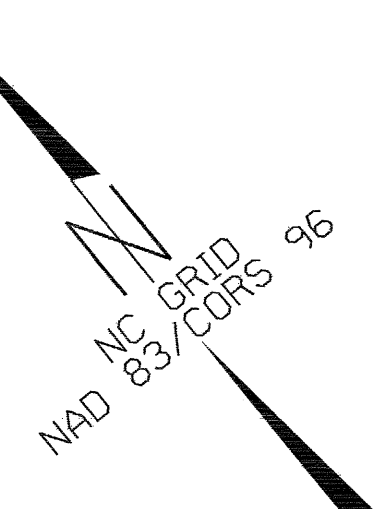
NOT TO SCALE

PROJECT REFERENCE NO. B-3404	SHEET NO. EC-3/CONST.4
R/W SHEET NO.	HYDRAULICS ENGINEER
ROADWAY DESIGN ENGINEER	

CLEARING AND GRUBBING
EROSION CONTROL FOR
CONSTRUCTION SHEET 4

NOTE:
PLACE TEMPORARY ROCK SEDIMENT DAMS TYPE - B
AND TEMPORARY ROCK SILT CHECKS TYPE - A AT
DRAINAGE OUTLETS.

NOTE:
UTILIZE SPECIAL STILLING BASIN
WHERE APPLICABLE.



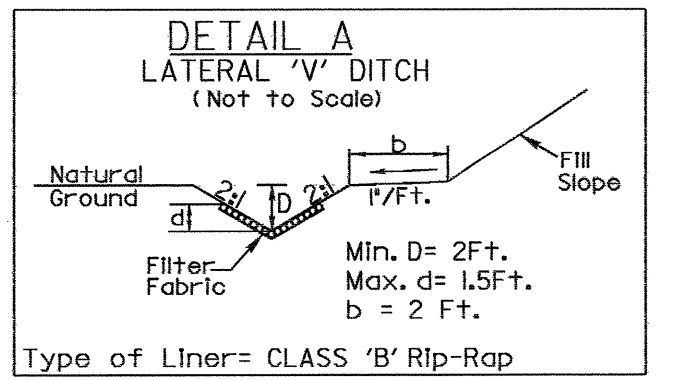
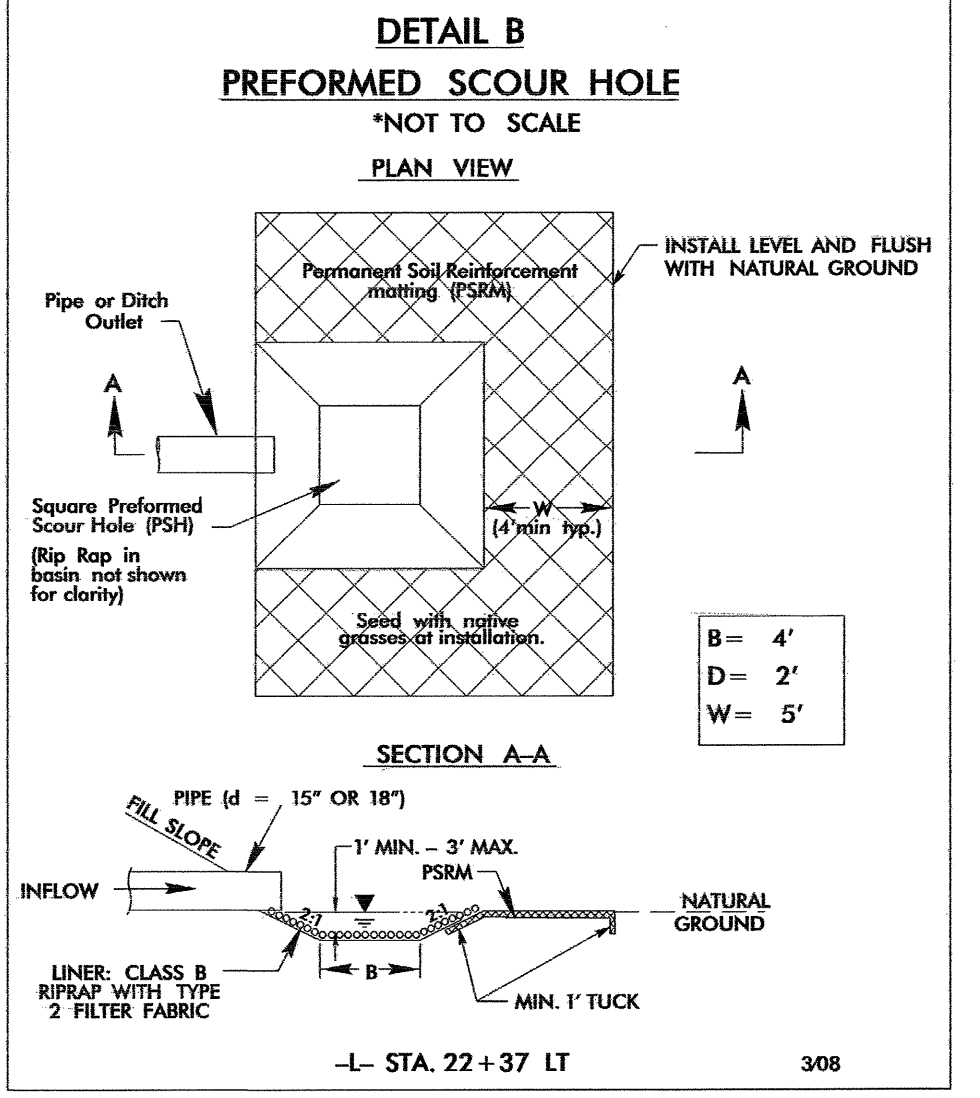
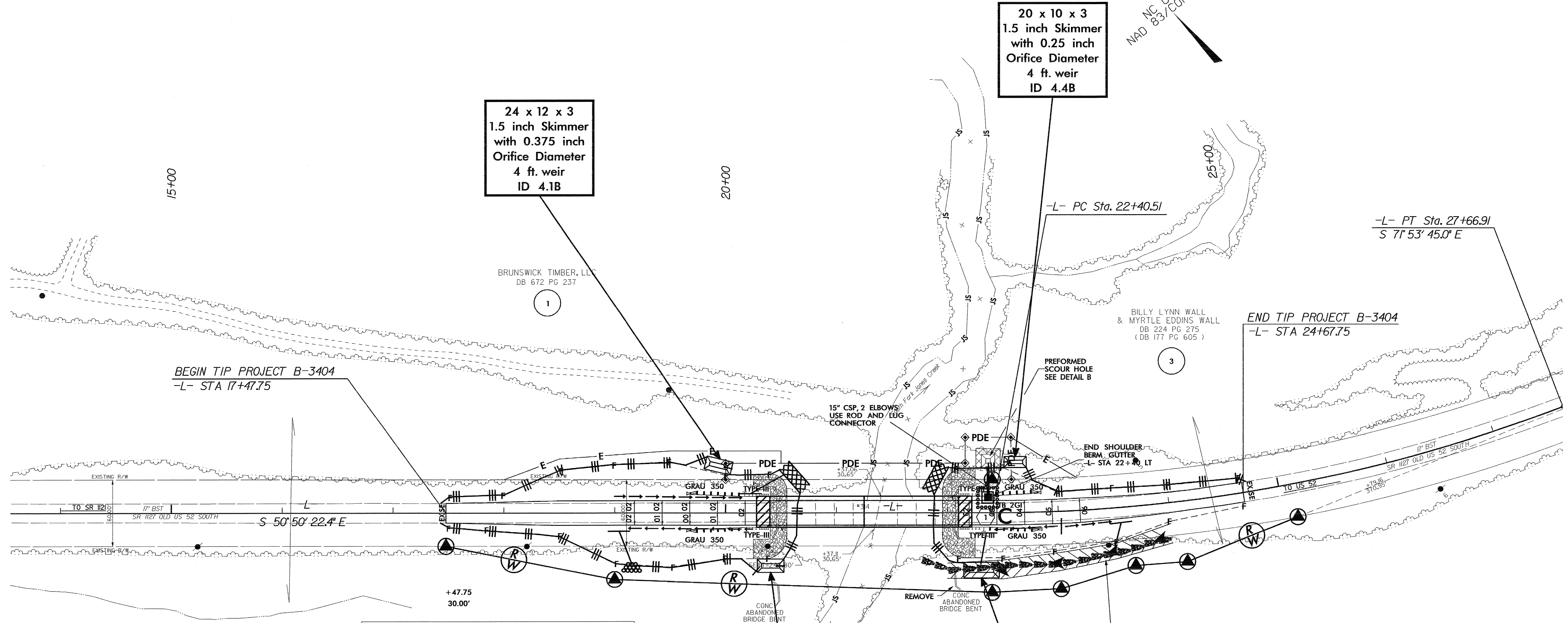
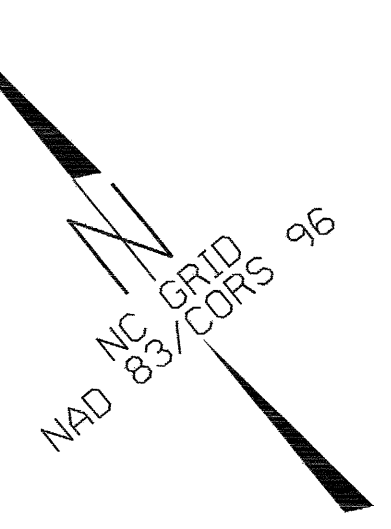
FROM -L- STA. 21+75 TO STA. 24+00 RT
CLASS "B" RIP RAP = 130 TONS
FILTER FABRIC FOR DRAINAGE = 350 SY
DDE = 242 CY

FOR PROFILE -L- SEE SHEET 5
FOR STRUCTURE PLANS SEE SHEET S-1 TO S-

8/17/99
05-NOV-2009 11:51
r:\environmental\design\b3404.ec_4psh.dgn
ec_4

PROJECT REFERENCE NO. B-3404	SHEET NO. EC-4/CONST.4
RW SHEET NO.	
ROADWAY DESIGN ENGINEER	HYDRAULICS ENGINEER

NOTE:
UTILIZE SPECIAL STILLING BASIN
WHERE APPLICABLE.



Type of Liner= CLASS 'B' Rip-Rap
FROM -L- STA. 21+75 TO STA. 24+00 RT
CLASS 'B' RIP RAP = 130 TONS
FILTER FABRIC FOR DRAINAGE = 350 SY
DDE = 242 CY

FOR PROFILE -L- SEE SHEET 5
FOR STRUCTURE PLANS SEE SHEET S-1 TO S-

8/17/99
05-NOV-2009 11:50
r:\environmental\design\B3404_ec_4psh.dgn
richard AT BENTLEY