

STATE	STATE PROJECT REFERENCE NO.	SHEET NO.	TOTAL SHEETS
N.C.	B-4672	EC-1	
STATE PROJ. NO.	F.A. PROJ. NO.	DESCRIPTION	

STATE OF NORTH CAROLINA
 DIVISION OF HIGHWAYS
 PLAN FOR PROPOSED
 HIGHWAY EROSION CONTROL

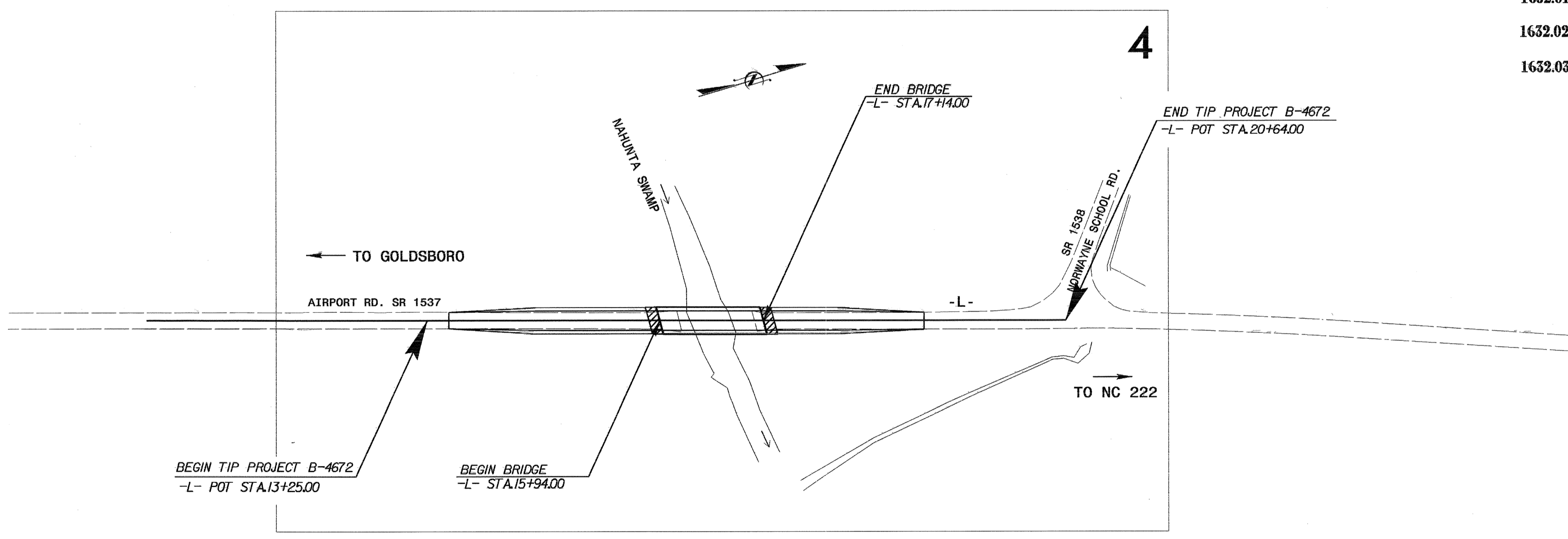
WAYNE COUNTY

**LOCATION: BRIDGE NO. 37 ON SR 1537 (AIRPORT RD.)
 OVER NAHUNTA SWAMP**

**TYPE OF WORK: GRADING, PAVING, DRAINAGE, AND
 STRUCTURE**

EROSION AND SEDIMENT CONTROL MEASURES

Std. #	Description	Symbol
1630.03	Temporary Silt Ditch	TD
1630.05	Temporary Diversion	TD
1605.01	Temporary Silt Fence	
1606.01	Special Sediment Control Fence	▲▲▲
1622.01	Temporary Berms and Slope Drains	—
	Silt Basin Type B	□
1633.01	Temporary Rock Silt Check Type-A	⊗
	Temporary Rock Silt Check Type-A with Matting and Polyacrylamide (PAM)	⊗
	Temporary Rock Silt Check Type-B	▶
	Wattle	⌒
1634.01	Temporary Rock Sediment Dam Type-A	⊗
1634.02	Temporary Rock Sediment Dam Type-B	⊗
1635.01	Rock Pipe Inlet Sediment Trap Type-A	⌒
1635.02	Rock Pipe Inlet Sediment Trap Type-B	⌒
1630.04	Stilling Basin	□
1630.06	Special Stilling Basin	□
	Rock Inlet Sediment Trap:	
1632.01	Type A	A
1632.02	Type B	B
1632.03	Type C	C
	Skimmer Basin	□
	Tiered Skimmer Basin	□
	Infiltration Basin	□



**THIS PROJECT CONTAINS
 EROSION CONTROL PLANS
 FOR CLEARING AND
 GRUBBING PHASE OF
 CONSTRUCTION.**

**THIS PROJECT HAS
 BEEN DESIGNED TO
 SENSITIVE WATERSHED
 STANDARDS.**

**ENVIRONMENTALLY
 SENSITIVE AREA(S) EXIST
 ON THIS PROJECT**
*Refer To E. C. Special Provisions
 for Special Considerations.*

TIP PROJECT: B-4672

GRAPHIC SCALE

0

PLANS

0

PROFILE (HORIZONTAL)

0

PROFILE (VERTICAL)

ROADSIDE ENVIRONMENTAL UNIT
 DIVISION OF HIGHWAYS
 STATE OF NORTH CAROLINA

Prepared in the Office of:
ROADSIDE ENVIRONMENTAL UNIT
 1 South Wilmington St.
 Raleigh, NC 27611
2006 STANDARD SPECIFICATIONS

Roadway Standard Drawings

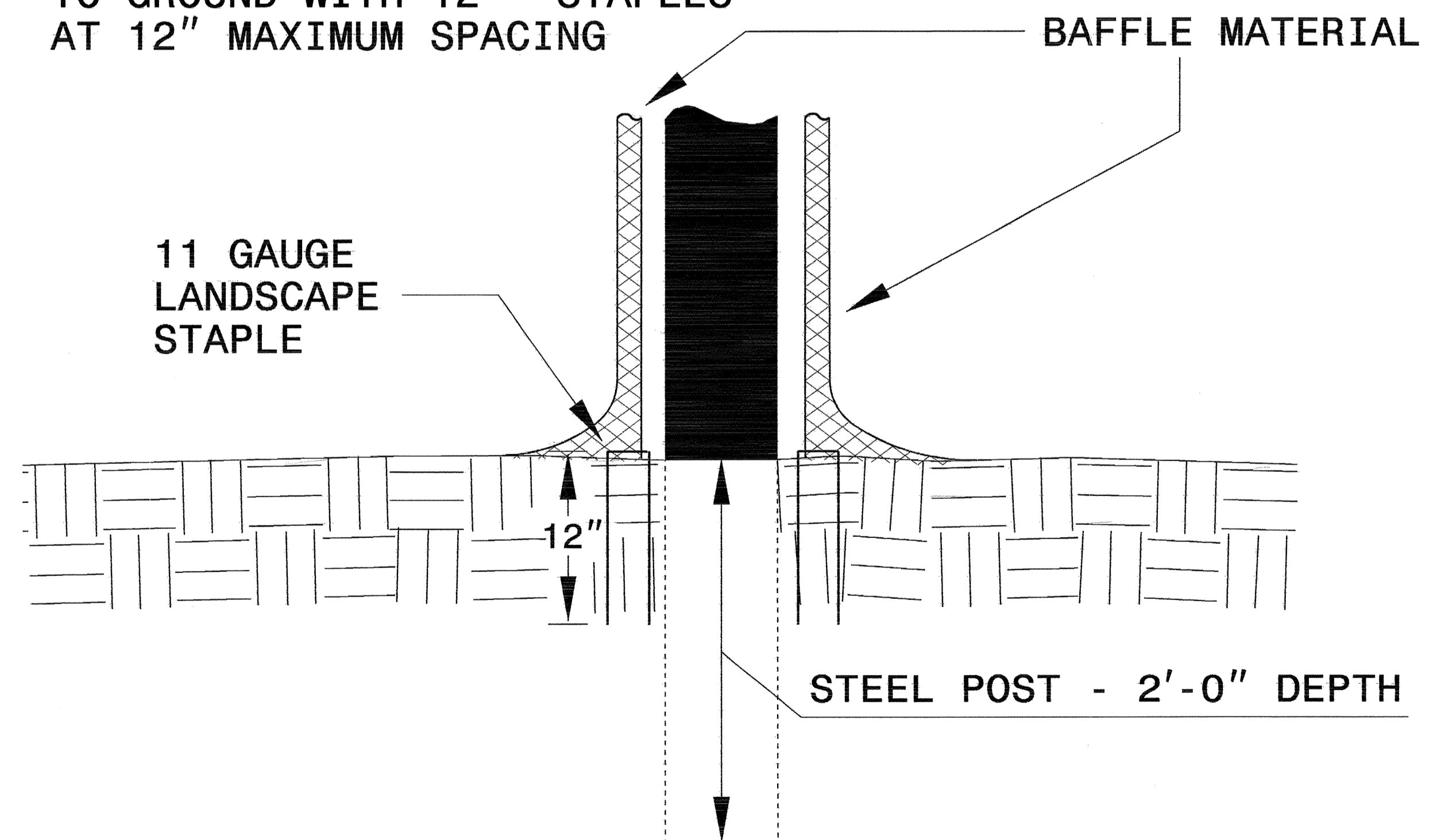
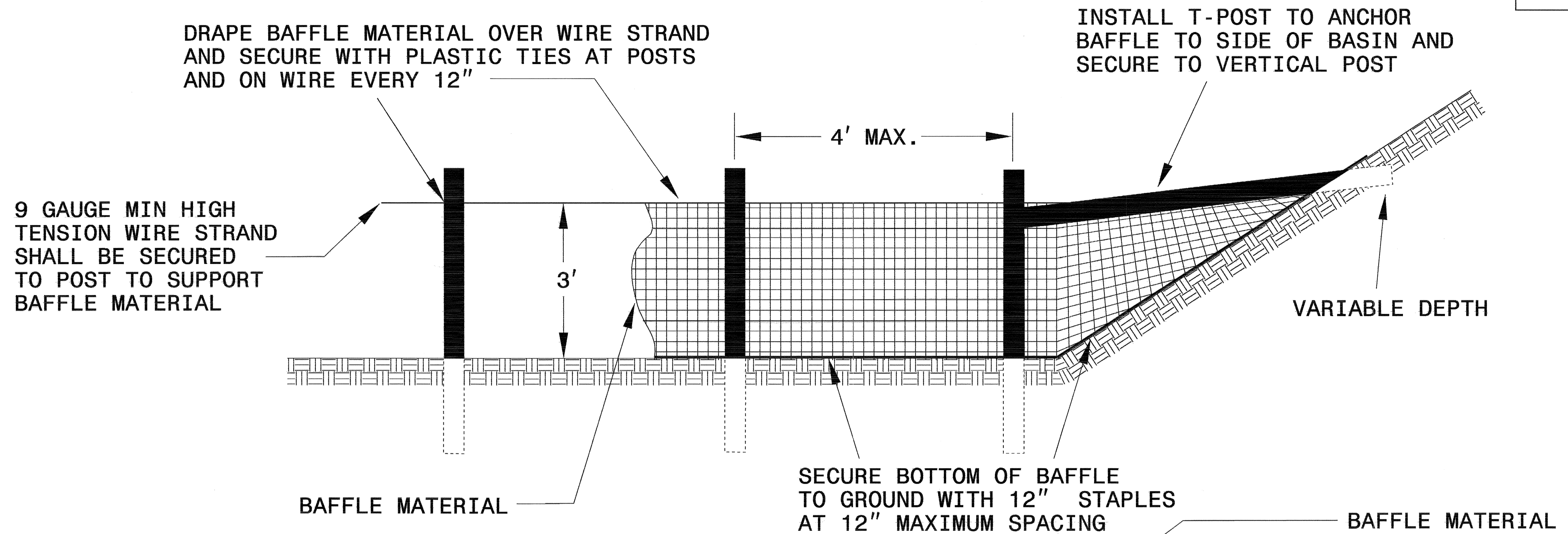
The following roadway english standards as appear in "Roadway Standard Drawings"- Roadway Design Unit - N. C. Department of Transportation - Raleigh, N. C., dated July 18, 2006 and the latest revision thereto are applicable to this project and by reference hereby are considered a part of these plans.

1605.01 Temporary Silt Fence	1632.03 Rock Inlet Sediment Trap Type C
1606.01 Special Sediment Control Fence	1633.01 Temporary Rock Silt Check Type A
1607.01 Gravel Construction Entrance	
1622.01 Temporary Berms and Slope Drains	
1630.05 Temporary Diversion	

15-OCT-2009 08:56
 c:\enviro\comp\1537\1537.dwg
 All EROSION CONTROL MEASURES

PROJECT REFERENCE NO. B-4672	SHEET NO. EC-2
ROADWAY DESIGN ENGINEER	HYDRAULICS ENGINEER

COIR FIBER BAFFLE DETAIL



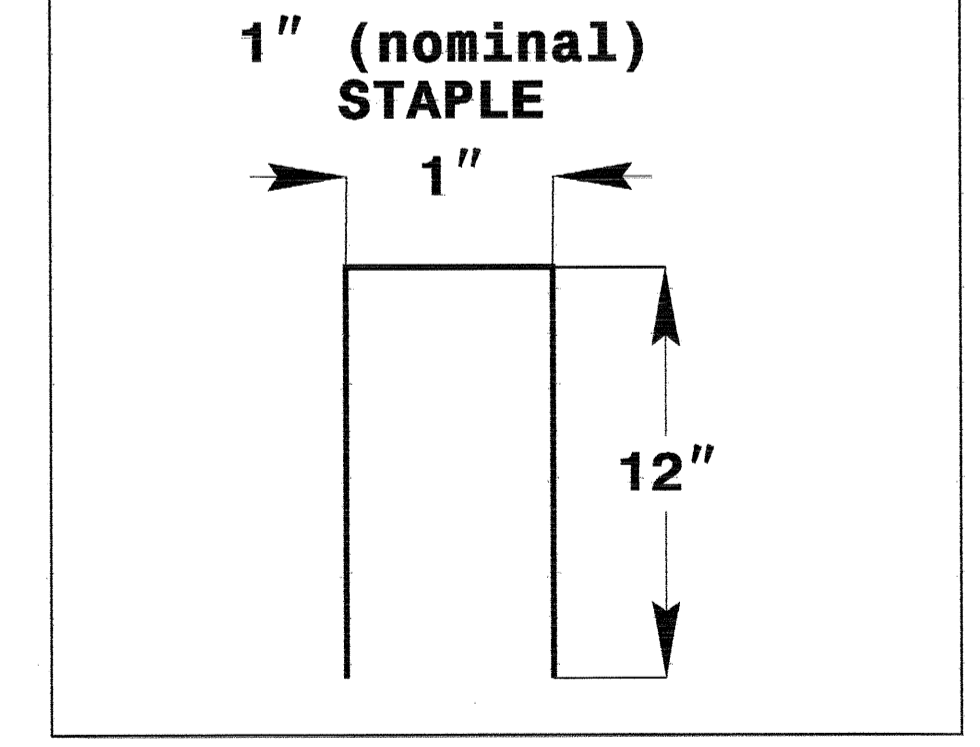
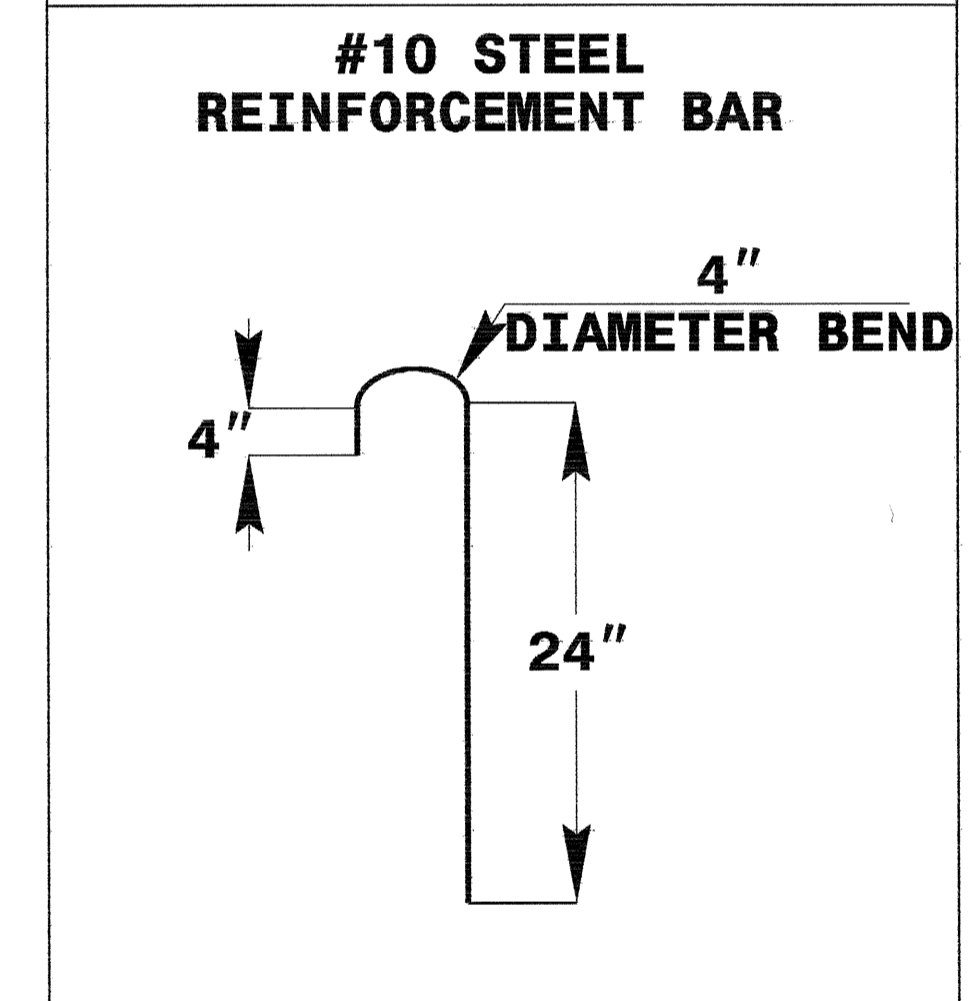
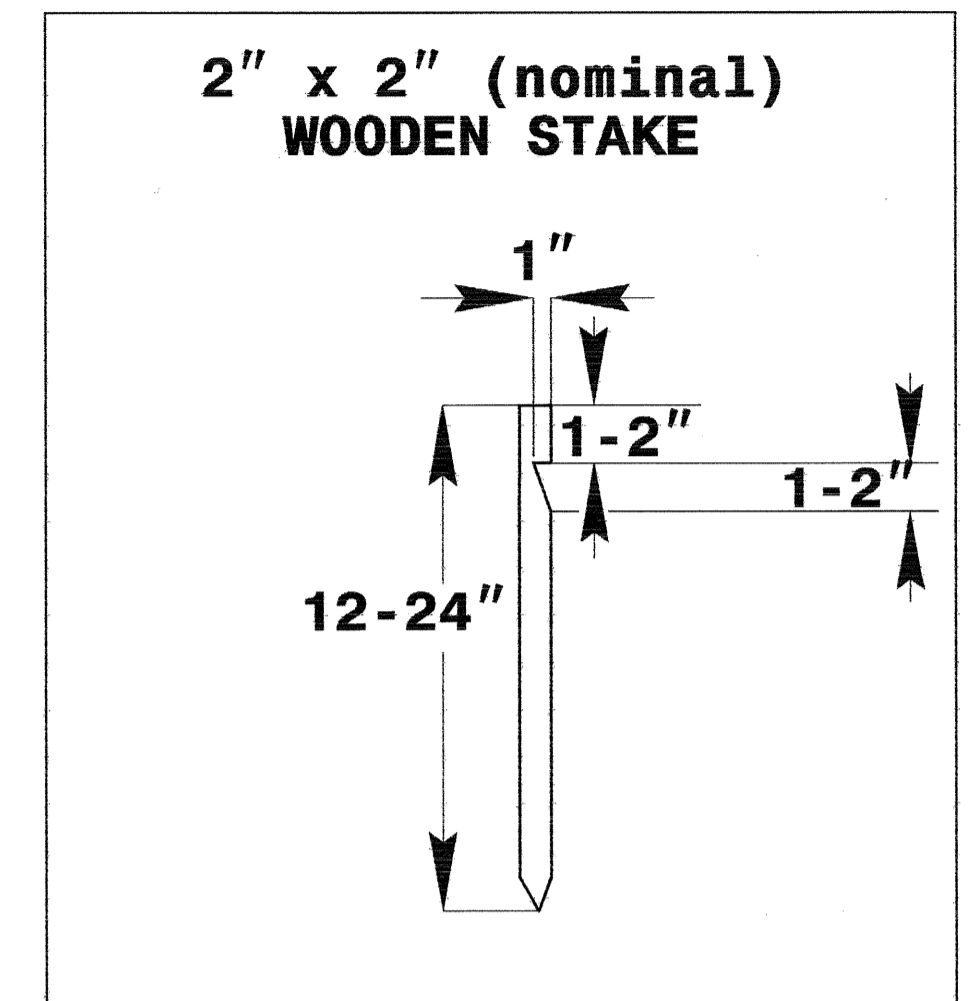
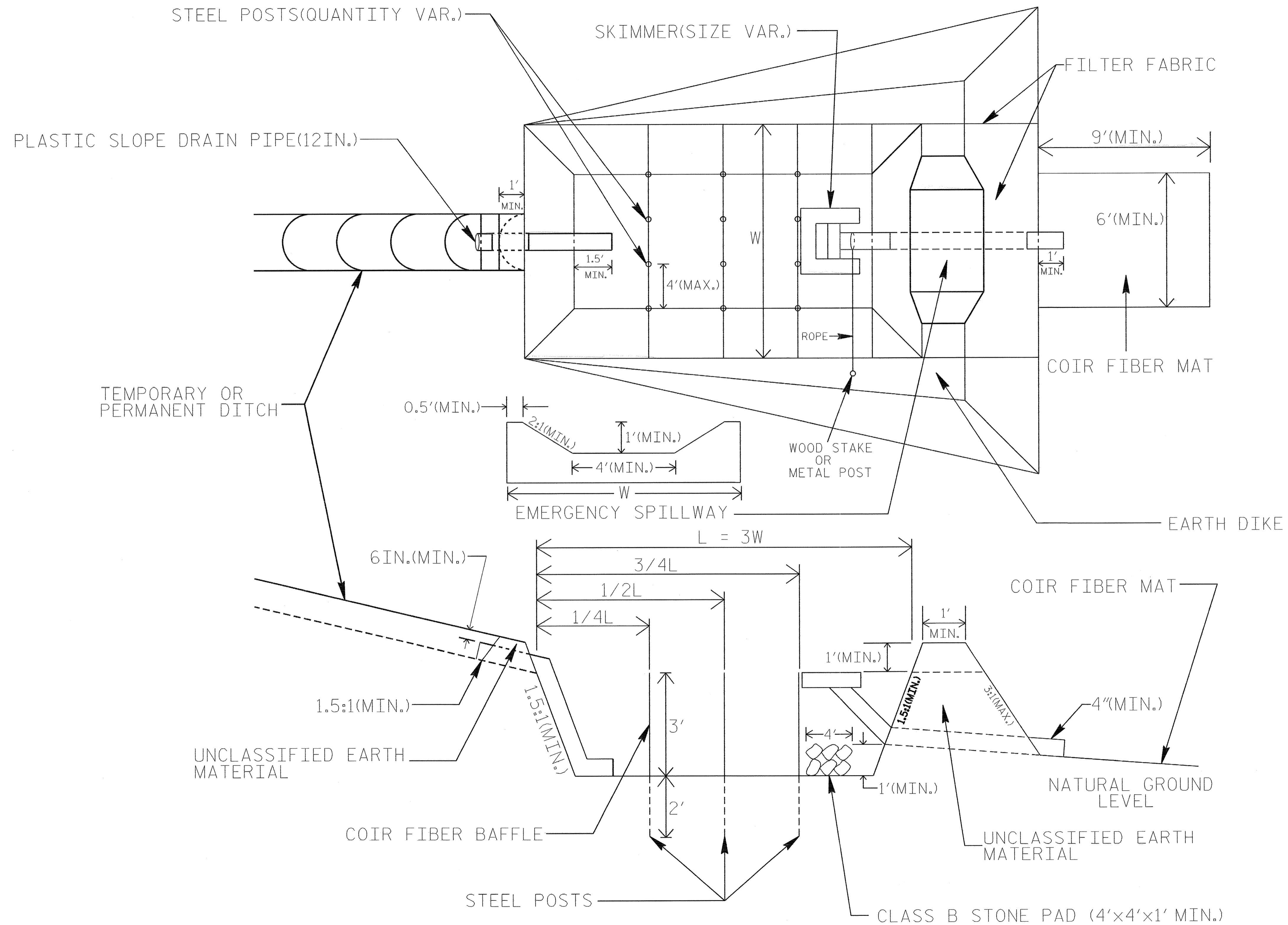
NOTES:

1. INSTALL THREE (3) COIR FIBER BAFFLES IN SILT BASINS AND SEDIMENT DAMS AT DRAINAGE OUTLETS WITH A SPACING OF $\frac{1}{4}$ THE BASIN LENGTH.
2. TWO (2) COIR FIBER BAFFLES CAN BE INSTALLED IN SILT BASINS AND DAMS LESS THAN 20 FT. IN LENGTH WITH A SPACING OF $\frac{1}{3}$ THE BASIN LENGTH.
3. TOP HEIGHT OF COIR FIBER BAFFLES SHALL NOT BE BELOW BASE OF EMERGENCY SPILLWAY ELEVATION.

BAFFLE MATERIAL SHALL BE SECURED TO THE BOTTOM AND SIDES OF BASIN USING 12" LANDSCAPE STAPLES

SKIMMER BASIN WITH BAFFLES DETAIL

PROJECT REFERENCE NO. B-4672	SHEET NO. EC-2A
R/W SHEET NO.	
ROADWAY DESIGN ENGINEER	HYDRAULICS ENGINEER



COIR FIBER MAT ANCHOR OPTIONS

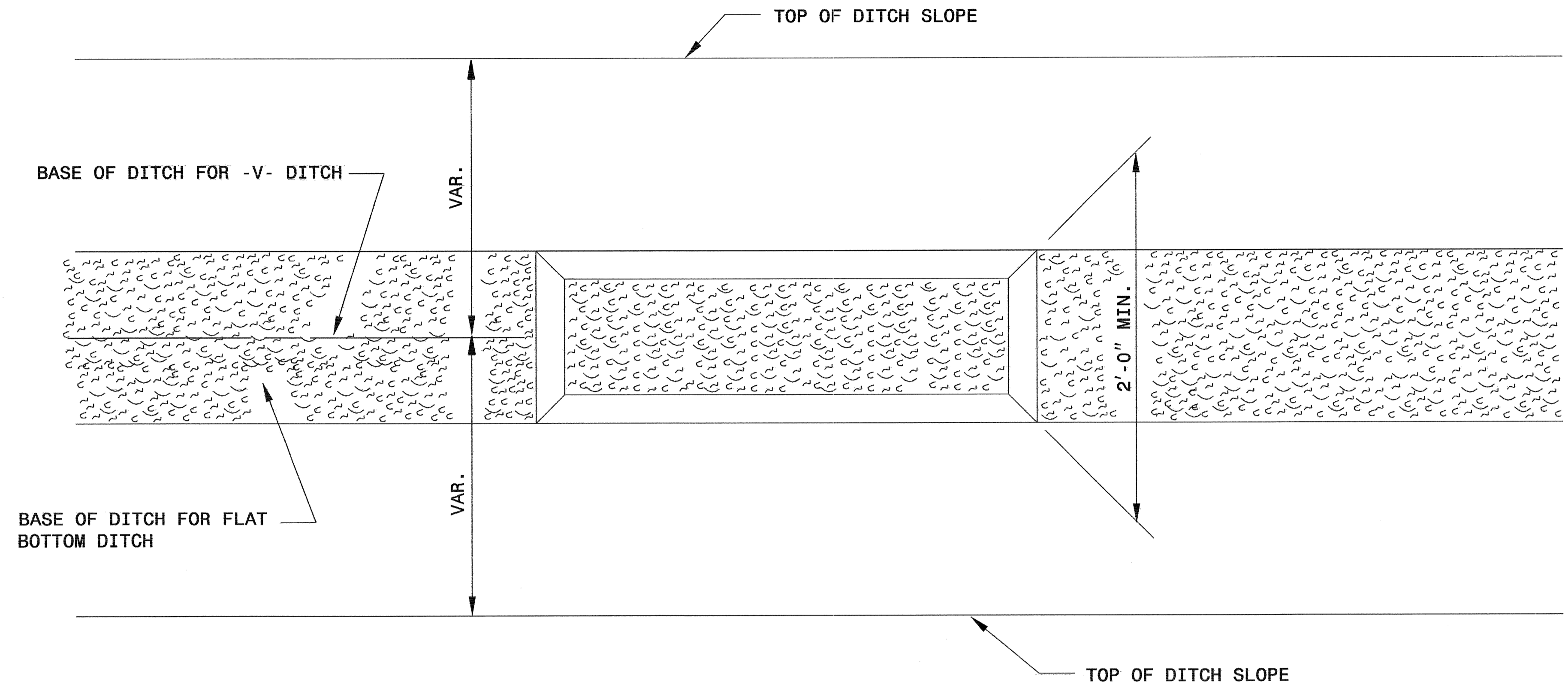
NOTES

1. SEED AND PLACE MATTING FOR EROSION CONTROL ON INTERIOR SIDESLOPES.
2. LIMIT EARTH DIKE HEIGHT TO 5 FT.
3. THE MINIMUM BASIN WIDTH SHALL BE 9 FT.
4. DETERMINE EMERGENCY SPILLWAY LENGTH (FT.) USING $Q/0.8$, WHERE Q IS FLOW RATE (CFS) INTO BASIN.

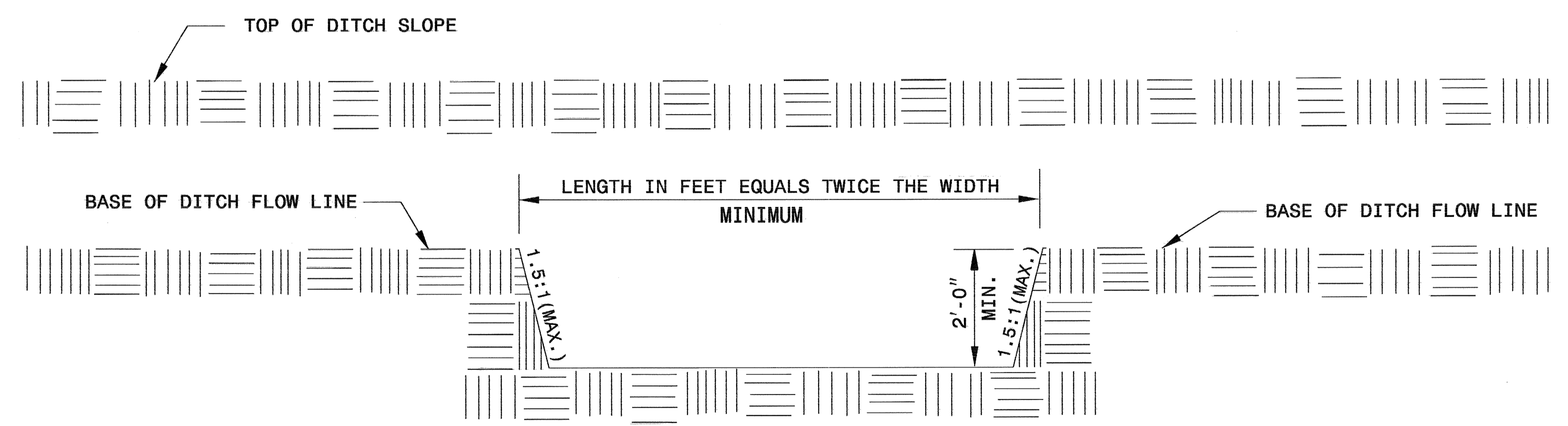
NOT TO SCALE

PROJECT REFERENCE NO. B-4672	SHEET NO. EC-2B
RW SHEET NO.	
ROADWAY DESIGN ENGINEER	HYDRAULICS ENGINEER

SILT BASIN 'B' DETAIL



PLAN

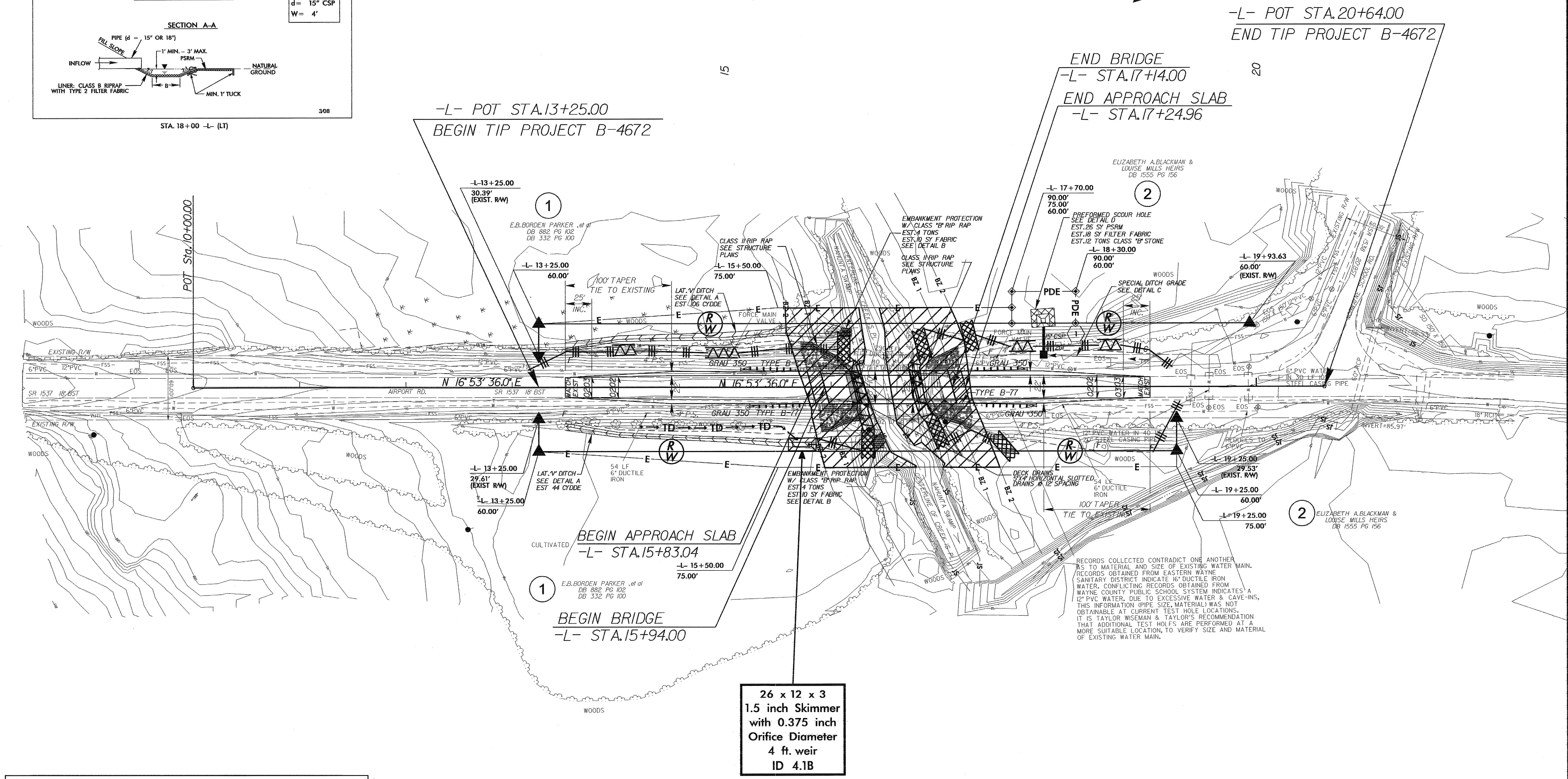
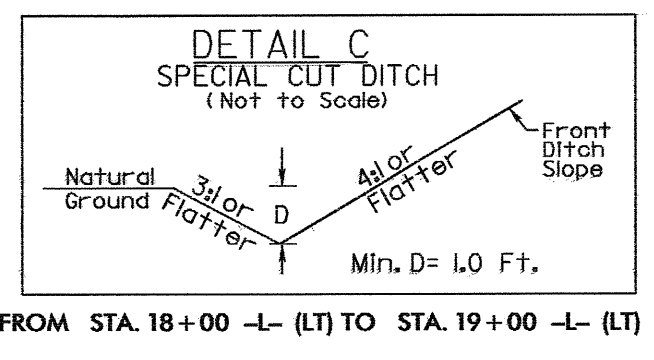
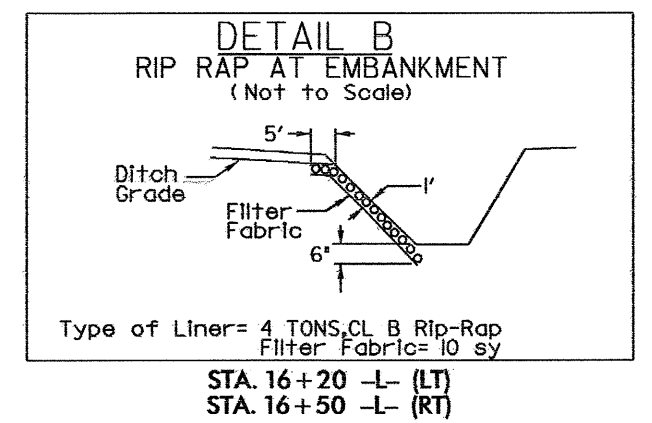
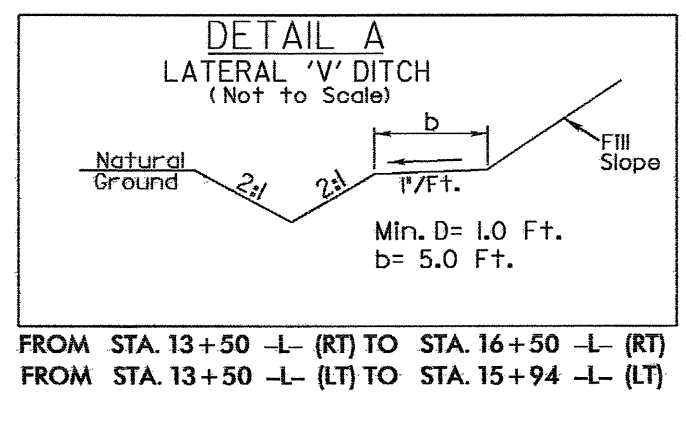
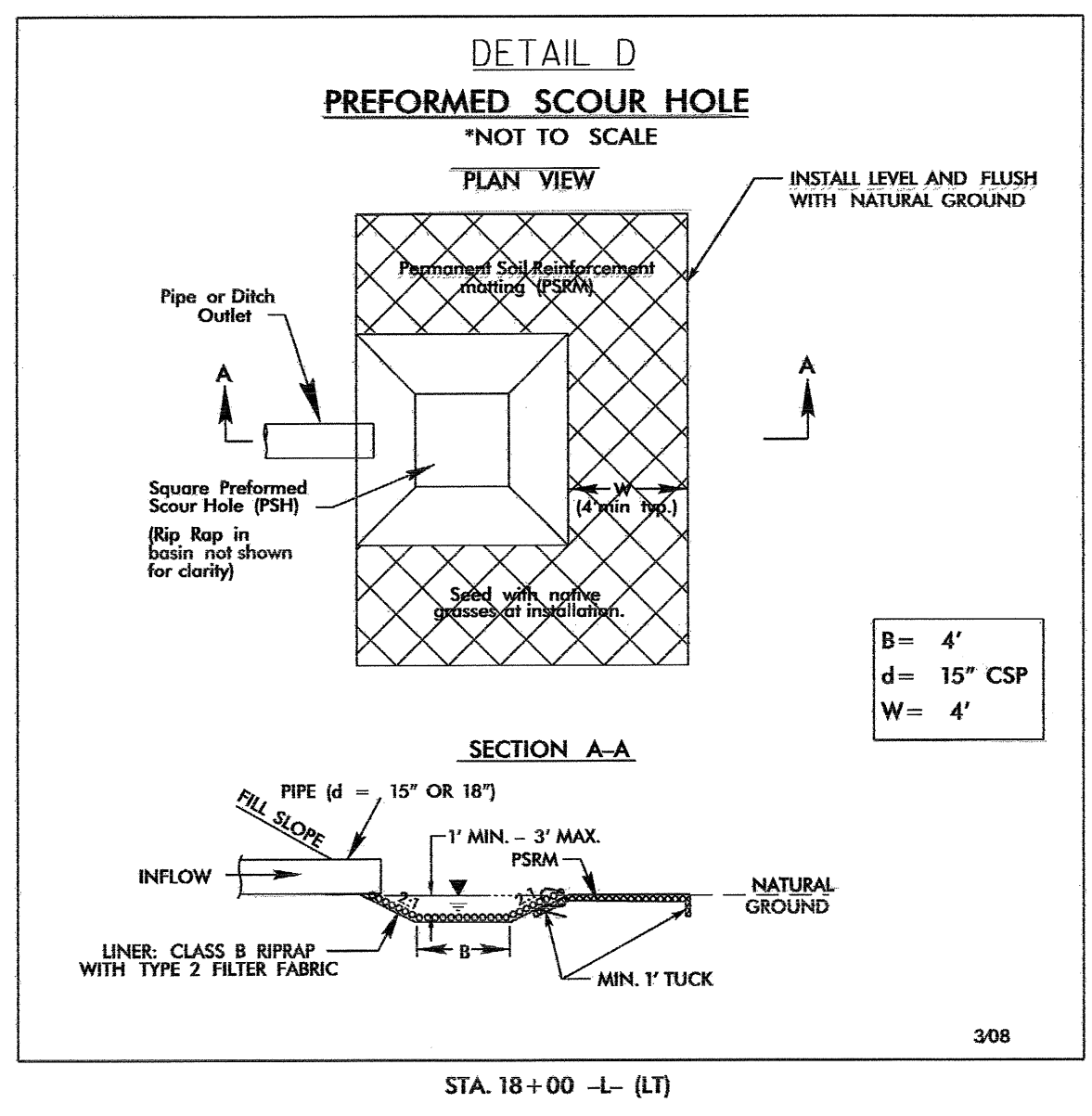


ELEVATION

PROJECT REFERENCE NO.	SHEET NO.
B-4672	EC-3/CONST.4
R/W SHEET NO.	HYDRAULICS ENGINEER
ROADWAY DESIGN ENGINEER	

**CLEARING AND GRUBBING
EROSION CONTROL FOR
CONSTRUCTION SHEET 4**

NOTE:
PLACE TEMPORARY ROCK SEDIMENT DAMS TYPE - B
AND TEMPORARY ROCK SILT CHECKS TYPE - A AT
DRAINAGE OUTLETS.



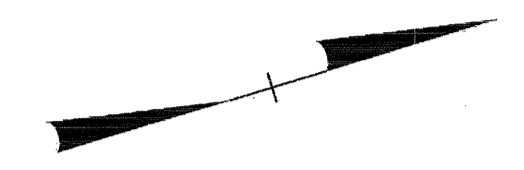
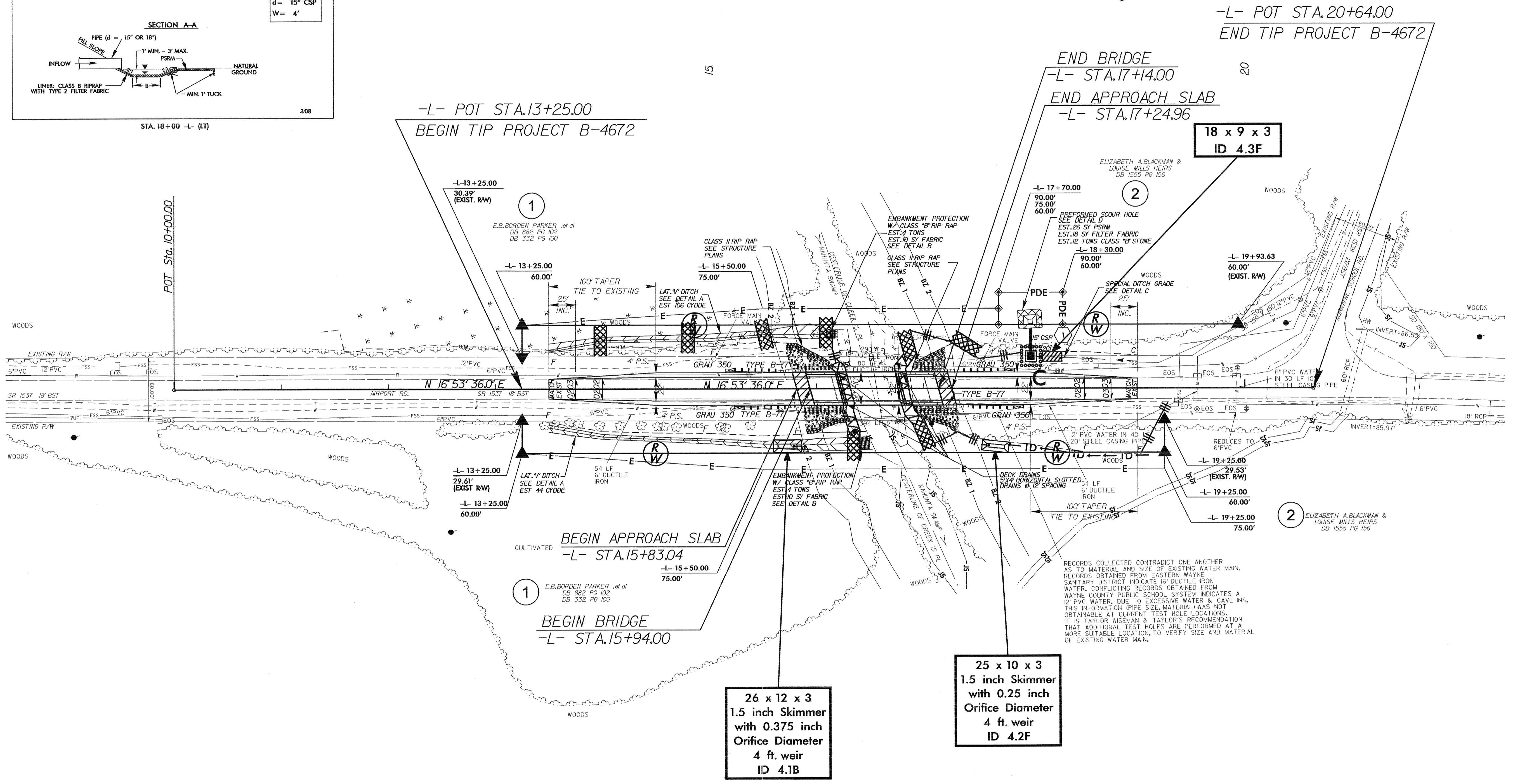
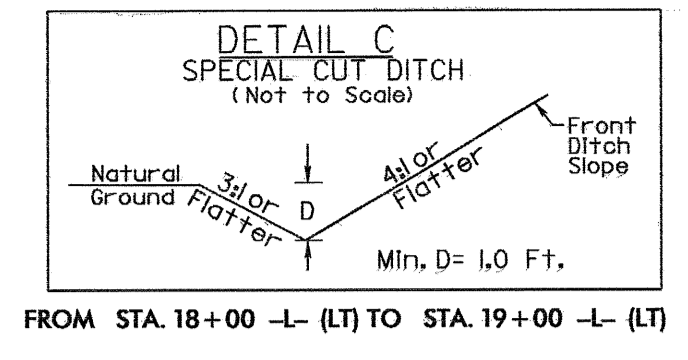
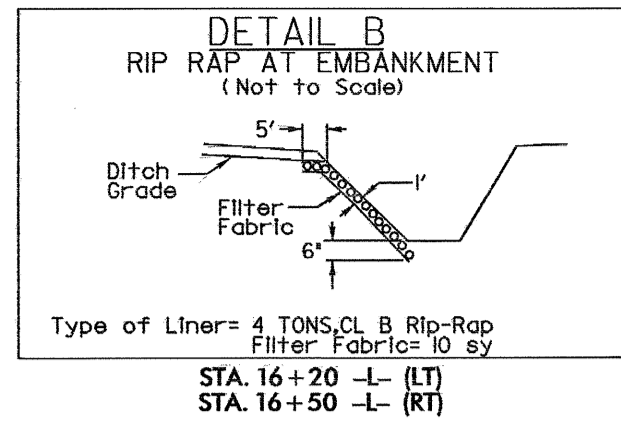
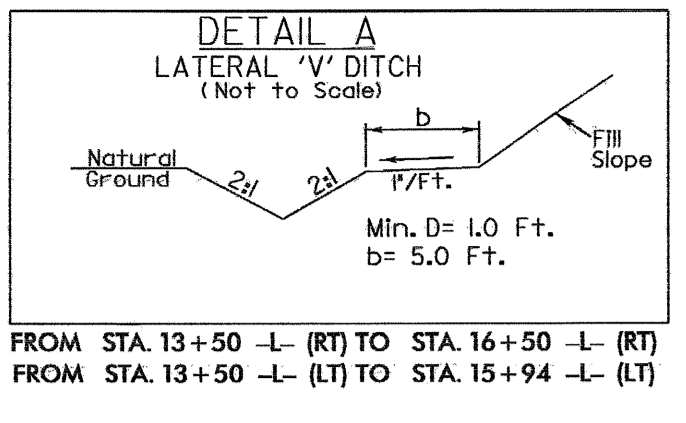
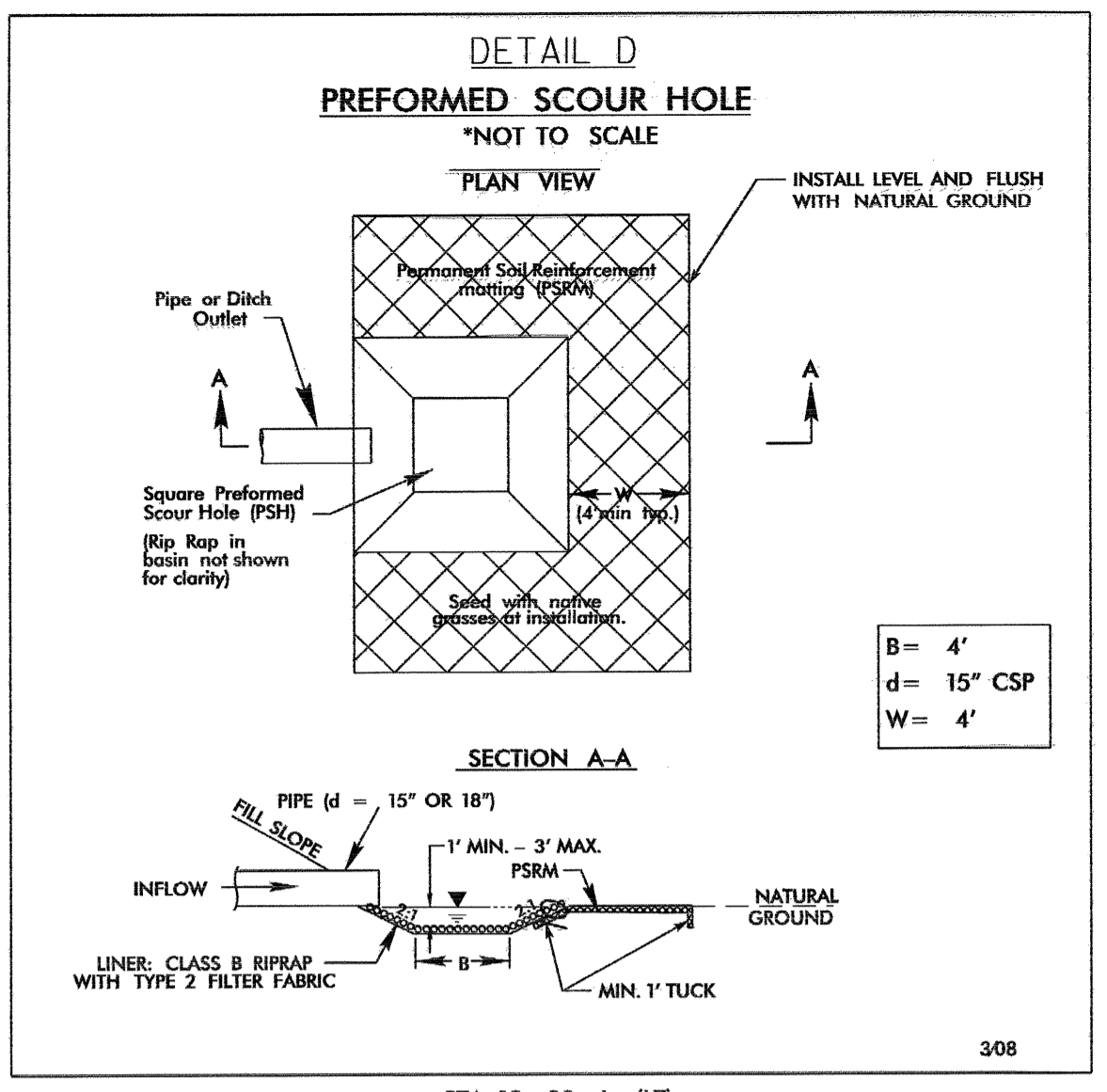
ENVIRONMENTALLY SENSITIVE AREA
SEE PROJECT SPECIAL PROVISIONS

26 x 12 x 3
1.5 inch Skimmer
with 0.375 inch
Orifice Diameter
4 ft. weir
ID 4.1B

NOTES:
SEE SHEET 5 FOR -L- PROFILE

15-OCT-2009 09:01 p:\enviro\onproject\ec\gn\b-4672-ec.psh04.dgn

PROJECT REFERENCE NO. B-4672	SHEET NO. EC-4/CONST.4
RW SHEET NO.	
ROADWAY DESIGN ENGINEER	HYDRAULICS ENGINEER



NOTES:
SEE SHEET 5 FOR -L- PROFILE

8/17/09
 15-OCT-2009 09:10
 C:\pwworkspace\AT&T\PROJECTS\B-4672.ec.psh04.dgn