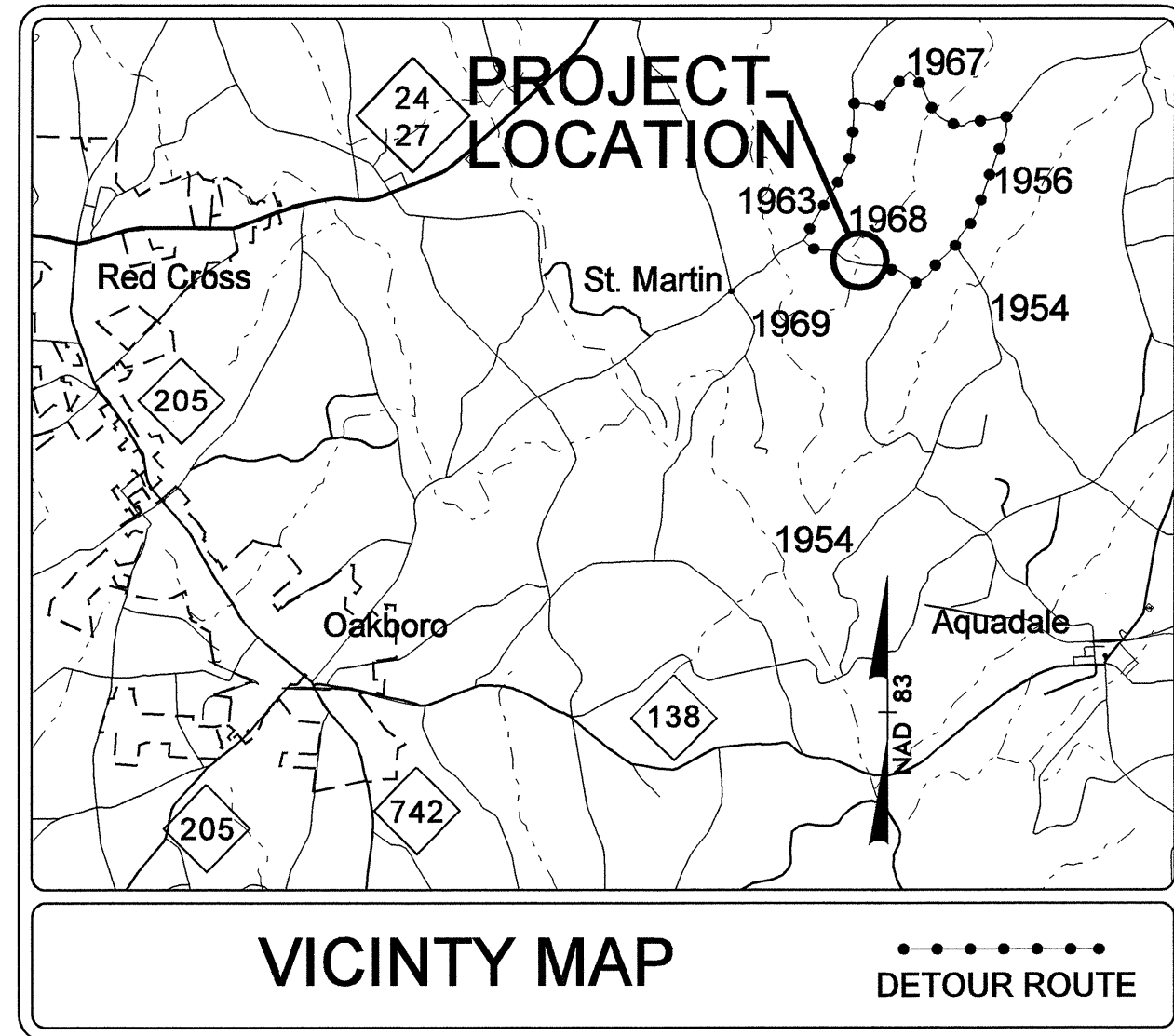


TIP PROJECT: B-3909

CONTRACT: 202166

T.I.P. NO.	SHEET NO.
B-3909	UO-1



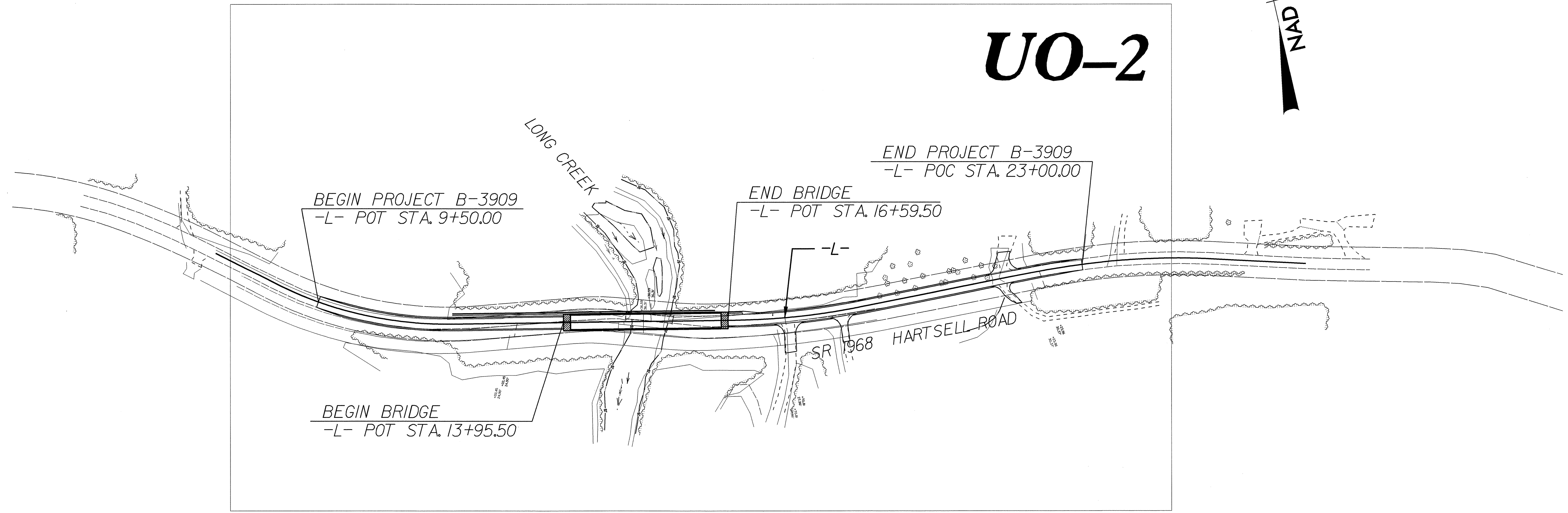
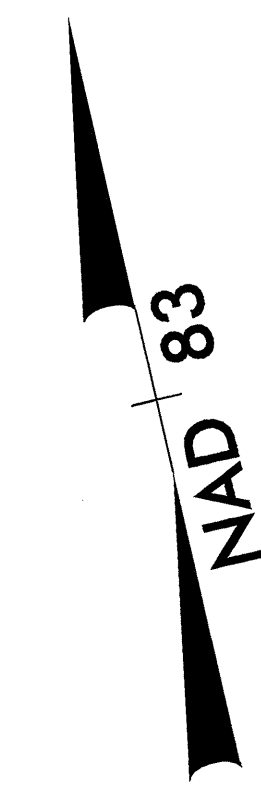
STATE OF NORTH CAROLINA
DIVISION OF HIGHWAYS

**UTILITIES BY OTHERS PLANS
STANLY COUNTY**

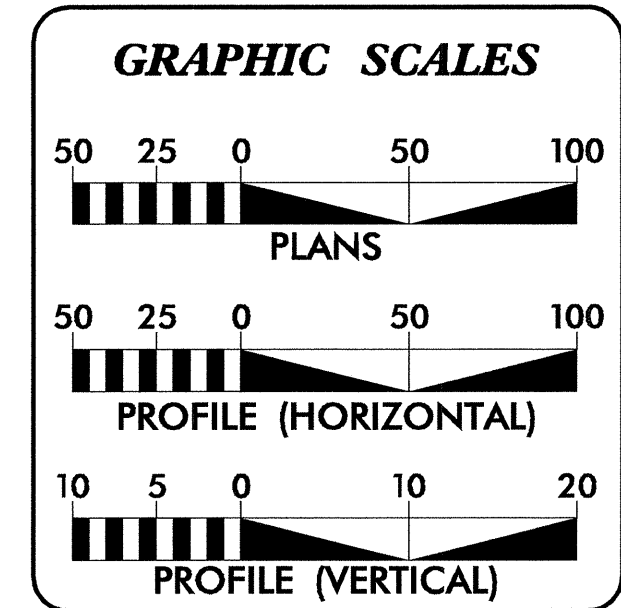
**LOCATION: BRIDGE No. 99 OVER LONG CREEK
ON SR 1968 (HARTSELL ROAD)**

TYPE OF WORK: UTILITY RELOCATION

UO-2



NCDOT CONTACT: B. DOUG TAYLOR, P.E. - ROADWAY DESIGN - ENGINEERING COORDINATION



INDEX OF SHEETS

SHEET NO.	DESCRIPTION
UO-1	TITLE SHEET
UO-2	UTILITIES BY OTHERS PLAN SHEET

UTILITY OWNERS ON PROJECT

- (1) UNION POWER COOPERATIVE - POWER
- (2) WINDSTREAM TELEPHONE, INC. - TELEPHONE

PREPARED IN THE OFFICE OF:
**DIVISION OF HIGHWAYS
UTILITIES ENGINEERING
SECTION**

1591 MAIL SERVICES CENTER
RALEIGH NC 27699-1591
PHONE (919) 250-4128
FAX (919) 250-4119

<u>Roger Worthington, P.E.</u>	UTILITIES SECTION ENGINEER
<u>Steve McKee, P.E.</u>	UTILITIES SQUAD LEADER PROJECT ENGINEER
<u>Donald Proper</u>	UTILITIES PROJECT DESIGNER

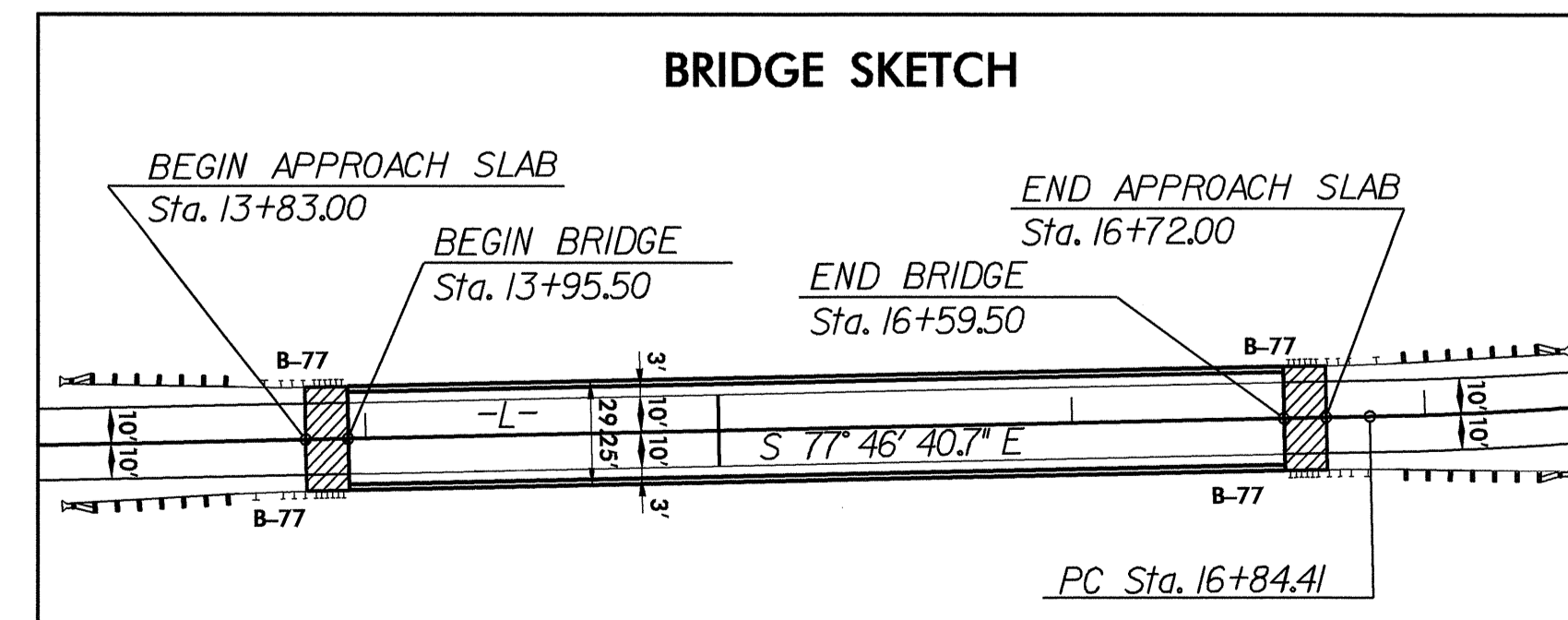
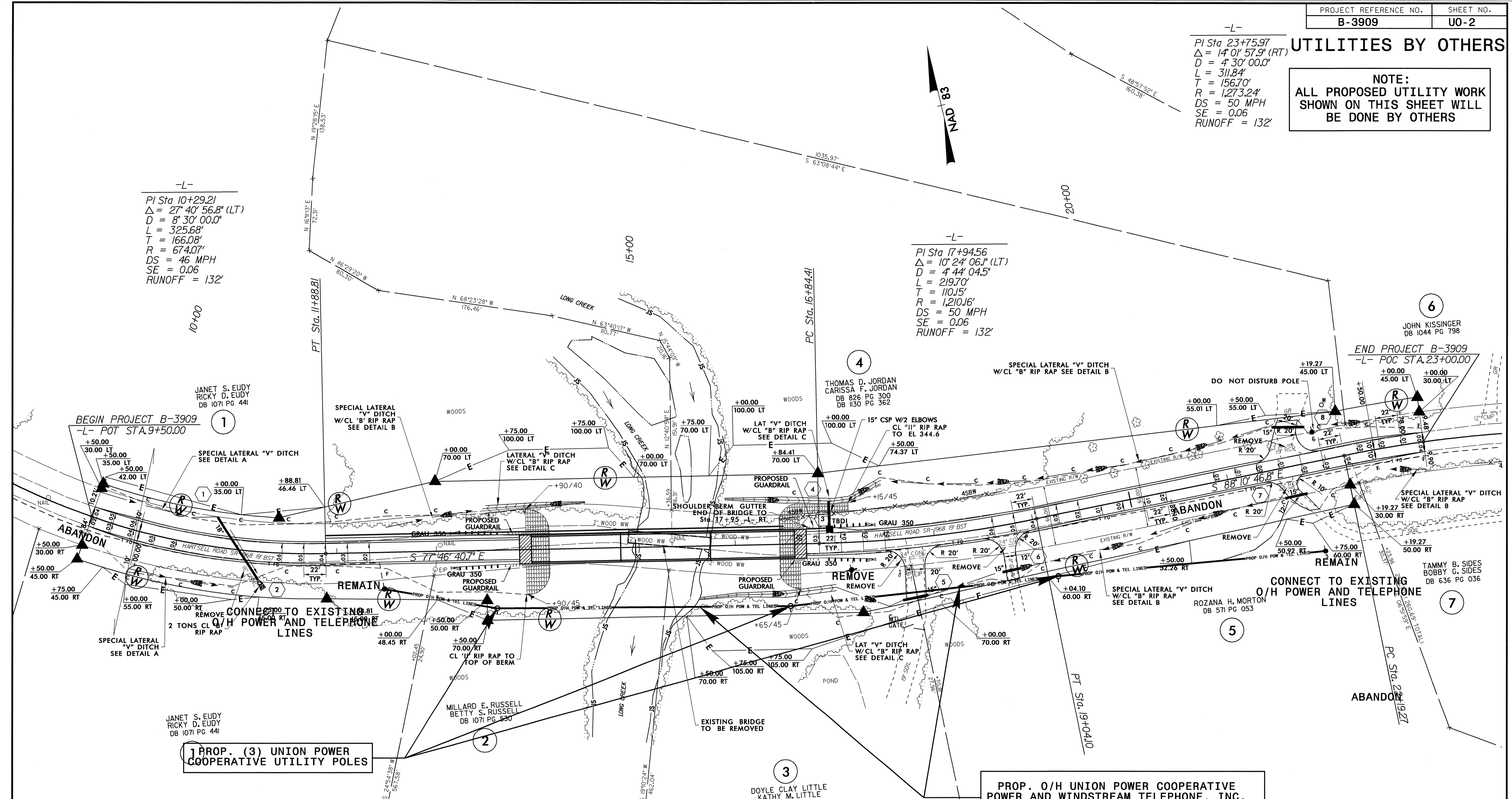
UTILITIES BY OTHERS

NOTE:
ALL PROPOSED UTILITY WORK SHOWN ON THIS SHEET WILL BE DONE BY OTHERS

-L-
PI Sta 23+75.97
Δ = 14° 01' 57.9" (RT)
D = 4' 30" 00.0"
L = 311.84'
T = 156.70'
R = 1,273.24'
DS = 50 MPH
SE = 0.06
RUNOFF = 132'

-L-
PI Sta 10+29.21
Δ = 27° 40' 56.8" (LT)
D = 8' 30" 00.0"
L = 325.68'
T = 166.08'
R = 674.07'
DS = 46 MPH
SE = 0.06
RUNOFF = 132'

-L-
PI Sta 17+94.56
Δ = 10° 24' 06.1" (LT)
D = 4' 44" 04.5"
L = 219.70'
T = 110.15'
R = 1,210.16'
DS = 50 MPH
SE = 0.06
RUNOFF = 132'



1 PROP. (3) UNION POWER COOPERATIVE UTILITY POLES

PROP. O/H UNION POWER COOPERATIVE POWER AND WINDSTREAM TELEPHONE, INC. TELEPHONE LINES

