

STATE OF NORTH CAROLINA
DIVISION OF HIGHWAYS

STATE PROJECT REFERENCE NO.	SHEET NO.
B-4627	TCP-1

**PLAN FOR PROPOSED
TRAFFIC CONTROL, MARKING & DELINEATION
ROWAN COUNTY**

B-4627

ROADWAY STANDARD DRAWINGS

THE FOLLOWING ROADWAY STANDARDS AS APPEAR IN "ROADWAY STANDARD DRAWINGS" - PROJECT SERVICES UNIT-N.C. DEPARTMENT OF TRANSPORTATION-RALEIGH, N.C., DATED JULY 2006 ARE APPLICABLE TO THIS PROJECT AND BY REFERENCE HEREBY ARE CONSIDERED A PART OF THESE PLANS:

STD. NO.	TITLE
1101.03	TEMPORARY ROAD CLOSURES
1101.05	WORK ZONE VEHICLE ACCESSES
1101.11	TRAFFIC CONTROL DESIGN TABLES
1110.01	STATIONARY WORK ZONE SIGNS
1145.01	BARRICADES - TYPE III

INDEX OF SHEETS

SHEET NO.	TITLE
TCP-1	LIST OF APPLICABLE ROADWAY STANDARD DRAWINGS, LEGEND, INDEX OF SHEETS, PHASING, AND GENERAL NOTES
TCP-2	PLAN VIEW
TCP-3	DETOUR ROUTE
SD-1	SPECIAL SIGN DESIGNS

PHASING

PHASE I

NOTE: THE CONTRACTOR SHALL FURNISH AND INSTALL ALL DETOUR ROUTE SIGNAGE PRIOR TO CLOSING THE ROADWAY TO TRAFFIC (SEE SHEETS TCP-2, TCP-3 AND SD-1).

STEP 1:
THE CONTRACTOR SHALL FURNISH AND INSTALL TYPE III BARRICADES AND APPROPRIATE SIGNAGE PER SHEETS TCP-2, TCP-3 AND RSD 1101.03 SHEET 1 OF 9, CLOSE -L- AND PLACE TRAFFIC ONTO THE DETOUR.

STEP 2:
THE CONTRACTOR SHALL OBLITERATE THE EXISTING STRUCTURE AND CONSTRUCT THE PROPOSED STRUCTURE AND THE APPROACHES AS SHOWN IN THE CONSTRUCTION PLANS.

STEP 3:
THE CONTRACTOR SHALL FURNISH AND INSTALL ALL PAVEMENT MARKINGS AND AND PAVEMENT MARKERS AS DESCRIBED IN THE PAVEMENT MARKING PLANS.

STEP 4:
AFTER CONSTRUCTION IS COMPLETE, THE CONTRACTOR SHALL REMOVE ALL TRAFFIC CONTROL DEVICES AND OPEN THE ROADWAY TO THE FINAL TRAFFIC PATTERN.

GENERAL NOTES

CHANGES MAY BE REQUIRED WHEN PHYSICAL DIMENSIONS IN THE DETAIL DRAWINGS, STANDARD DETAILS AND ROADWAY DETAILS ARE NOT ATTAINABLE TO MEET FIELD CONDITIONS, OR RESULT IN DUPLICATE, OR UNDESIRABLE OVERLAPPING OF DEVICES. MODIFICATION MAY INCLUDE: MOVING, SUPPLEMENTING, COVERING OR REMOVAL OF DEVICES, AS DIRECTED BY THE ENGINEER.

THE FOLLOWING GENERAL NOTES APPLY AT ALL TIMES FOR THE DURATION OF THE CONSTRUCTION PROJECT EXCEPT WHEN OTHERWISE NOTED IN THE PLAN OR AS DIRECTED BY THE ENGINEER.

TRAFFIC PATTERN ALTERATIONS

A) NOTIFY THE ENGINEER TWENTY ONE (21) CALENDAR DAYS PRIOR TO ANY TRAFFIC PATTERN ALTERATION.

SIGNING

B) PROVIDE PERMANENT SIGNING.

C) PROVIDE DETOUR SIGNING ON AND OFF THE PROJECT LIMITS.

D) COVER OR REMOVE ALL DETOUR SIGNS ON AND OFF THE PROJECT LIMITS WHEN A DETOUR IS NOT IN OPERATION.

E) ENSURE ALL NECESSARY SIGNING IS IN PLACE PRIOR TO ALTERING ANY TRAFFIC PATTERN.

TRAFFIC CONTROL DEVICES

F) PLACE TYPE III BARRICADES, WITH "ROAD CLOSED" SIGN R11-2 ATTACHED, OF SUFFICIENT LENGTH TO CLOSE ENTIRE ROADWAY.

PAVEMENT MARKINGS AND MARKERS

G) INSTALL PAVEMENT MARKINGS AND PAVEMENT MARKERS ON THE FINAL SURFACE AS DESCRIBED IN THE PAVEMENT MARKING PLANS.

LEGEND

GENERAL

- DIRECTION OF TRAFFIC FLOW
- NORTH ARROW
- PROPOSED PVMT. EXIST. PVMT.
- WORK AREA
- REMOVAL OF EXISTING PAVEMENT

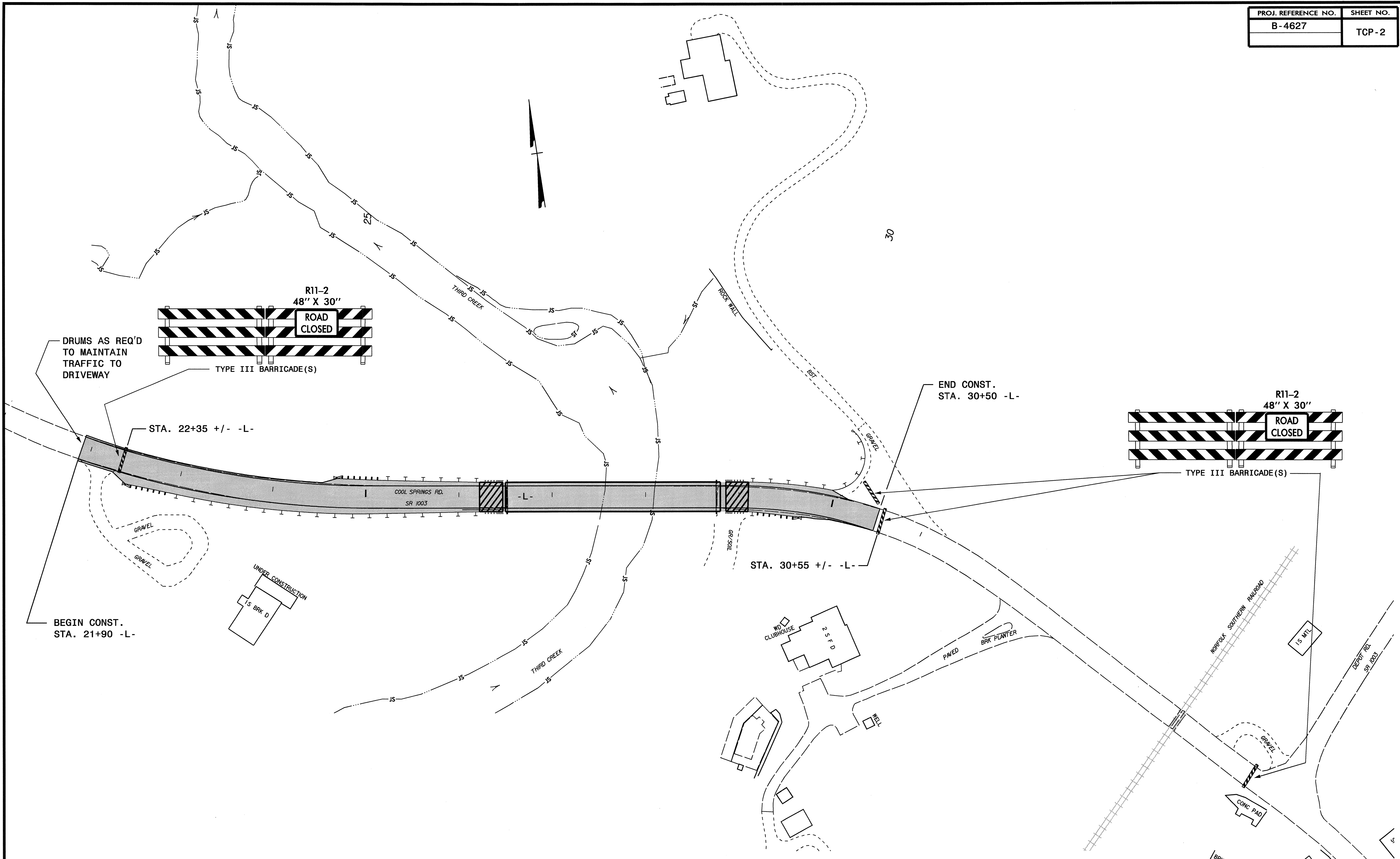
TRAFFIC CONTROL DEVICES

- TYPE III BARRICADE
- CONE
- DRUM SKINNY DRUM
- FLASHING ARROW PANEL (TYPE C)
- STATIONARY SIGN
- PORTABLE SIGN
- STATIONARY OR PORTABLE SIGN
- CRASH CUSHION
- CHANGEABLE MESSAGE SIGN
- TRUCK MOUNTED IMPACT ATTENUATOR (TMIA)
- POLICE
- FLAGGER

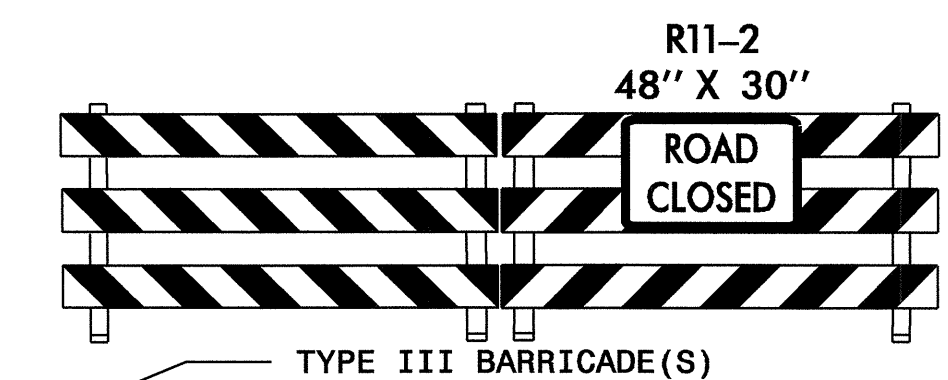
APPROVED: _____ DATE: _____	PLAN PREPARED BY: N.C.D.O.T. WORK ZONE TRAFFIC CONTROL UNIT
SEAL	J. S. BOURNE, P.E. TRAFFIC CONTROL ENGINEER
	G. L. GETTIER, P.E. TRAFFIC CONTROL PROJECT ENGINEER
	J. W. GILSTRAP TRAFFIC CONTROL PROJECT DESIGN ENGINEER
	KEN BROADWELL TRAFFIC CONTROL DESIGN ENGINEER / TECHNICIAN

28-APR-2009 07:19
\\dot\dfsroot\N\Pro\Tipp\projects-b\4627\Traffic\TrafficControl\top-b-4627-to-top-top-1.dgn
kbroadwell AT WZTC23745

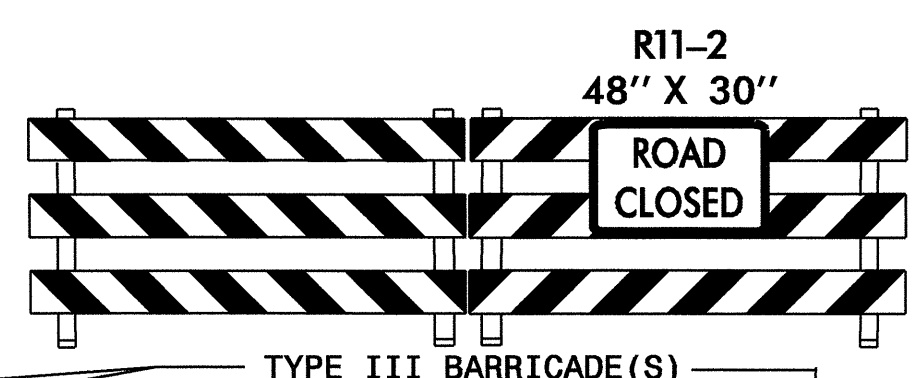
TIP PROJECT:



DRUMS AS REQ'D
TO MAINTAIN
TRAFFIC TO
DRIVEWAY



END CONST.
STA. 30+50 -L-



BEGIN CONST.
STA. 21+90 -L-

NOTE:
SEE SHEET TCP-3 FOR DETOUR ROUTE.

APPROVED:	DATE:	PLAN VIEW									
SCALE:	NONE										
DATE:	4/09										
DWG. BY:	KPB										
DESIGN BY:	KPB										
REVIEWED BY:	JWG	<table border="1"> <thead> <tr> <th colspan="2">REVISIONS</th> </tr> </thead> <tbody> <tr> <td> </td> <td> </td> </tr> <tr> <td> </td> <td> </td> </tr> <tr> <td> </td> <td> </td> </tr> </tbody> </table>		REVISIONS							
REVISIONS											

28-APR-2009 07:49
 \\dot\dfsroot\on\proj\top\projects\b\4627\traffic\trafficcontrol\top\b-4627_top-top-top-2.dgn
 kbroagwell AT WZTC23745

